

V&V Reference Report

L2 ASCDS Version : 7.6.10

Observation 2221 - L2 Version 001
Chandra X-Ray Center

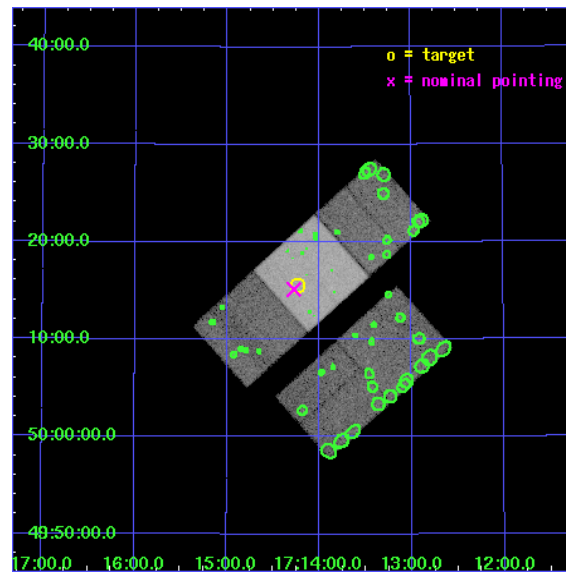
L2 Processing Date : Jan 13 2007

Contents

1	Front	2
2	OBI	3
2.1	OBI	3
2.1.1	Images	3
2.1.2	Bias	3
2.1.3	Parameters	4
2.1.4	Events	4
2.2	Compared Parameters	5
2.3	Aspect	6
2.4	Star Slots	9
2.4.1	Slot 3	9
2.4.2	Slot 4	10
2.4.3	Slot 5	11
2.4.4	Slot 6	12
2.4.5	Slot 7	13
2.5	FID Slots	14
2.5.1	Slot 0	14
2.5.2	Slot 1	15
2.5.3	Slot 2	16
3	Point Sources	17
A	Summary	18
A.1	Status	18
A.2	Comments	18

1 Front

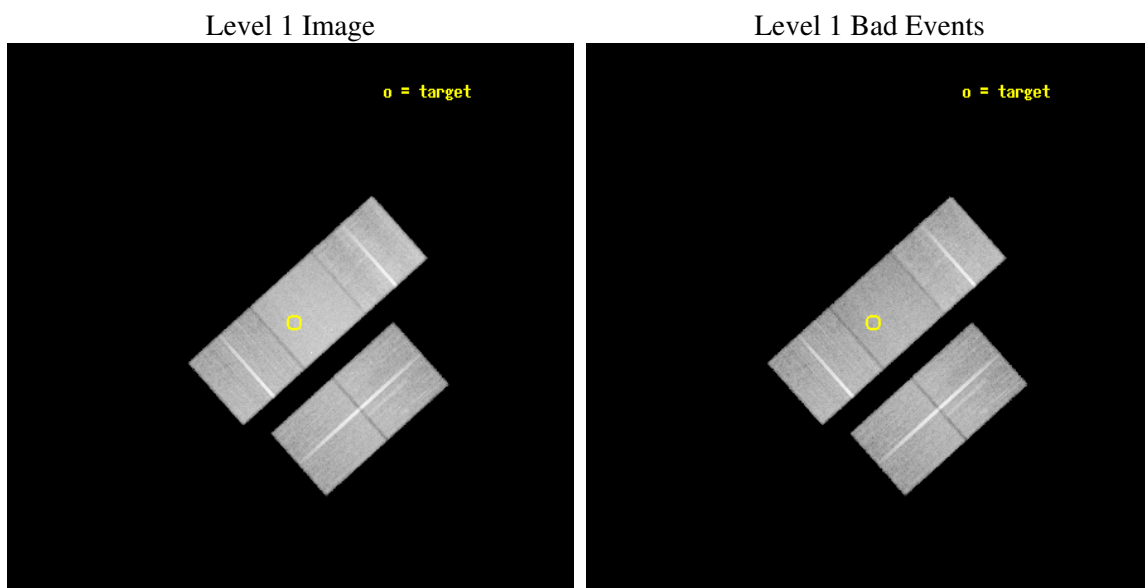
seq_num	800160
obs_id	2221
title	GALAXY AND CLUSTER BUILDING AT Z = 2.4
observer	PROFESSOR RAYMOND WHITE III
object	53W002 CLUSTER
dtcycle	0
cycle	P
ra_targ	258.559208
dec_targ	50.26
ra_nom	258.56854378345
dec_nom	50.25232183277
roll_nom	318.09577182427
revision	2
ontime	38142.399926662
livetime	37644.041391594
ontime2	38142.399926662
ontime3	38132.977016002
ontime6	38142.399926662
ontime7	38142.399926662
ontime8	38139.259066105
l2events	231196



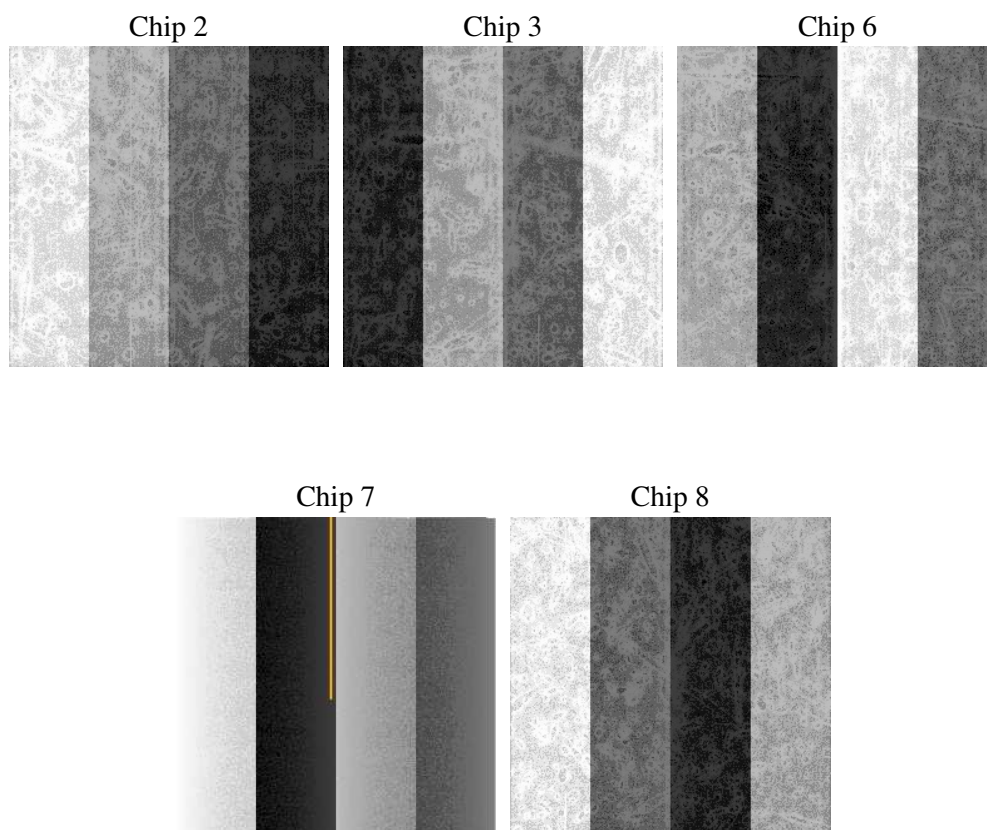
2 OBI

2.1 OBI

2.1.1 Images



2.1.2 Bias



2.1.3 Parameters

obi_num	0
ascdsver	7.6.10
caldbver	3.3.0
date	2007-01-13T15:03:29
revision	2

sched_exp_time	38000.000000
ontime	38142.399926662
ontime2	38142.399926662
ontime3	38132.977016002
ontime6	38142.399926662
ontime7	38142.399926662
ontime8	38139.259066105
l1events	1365043

2.1.4 Events

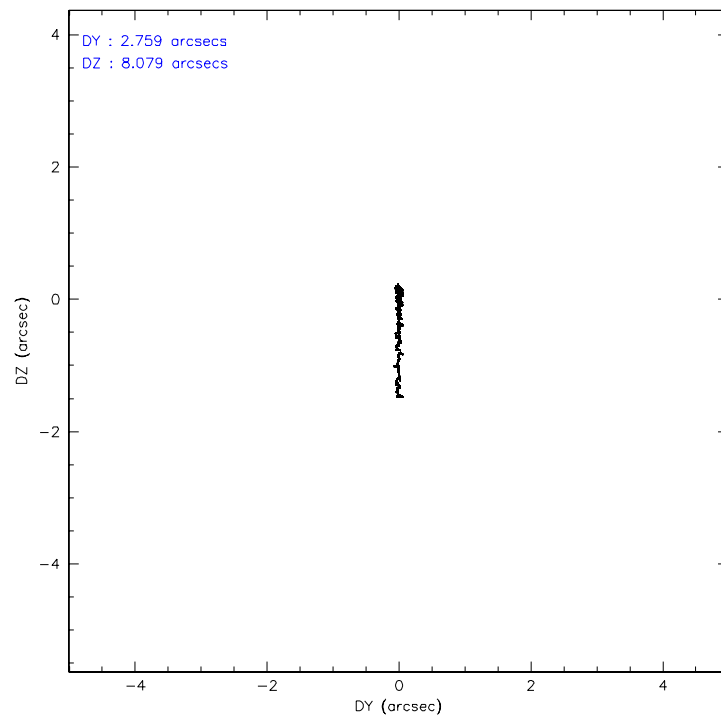
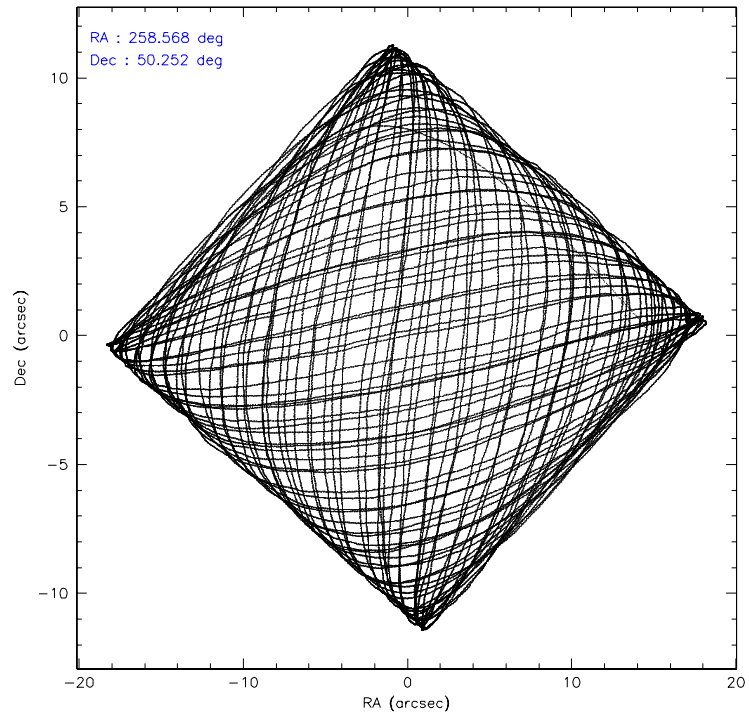
	ccd 2	ccd 3	ccd 6	ccd 7	ccd 8
level 1 events	238600	244692	249402	319068	313281
rejected events	210812	216647	220861	187461	250240
rejected %	88%	88%	88%	58%	79%

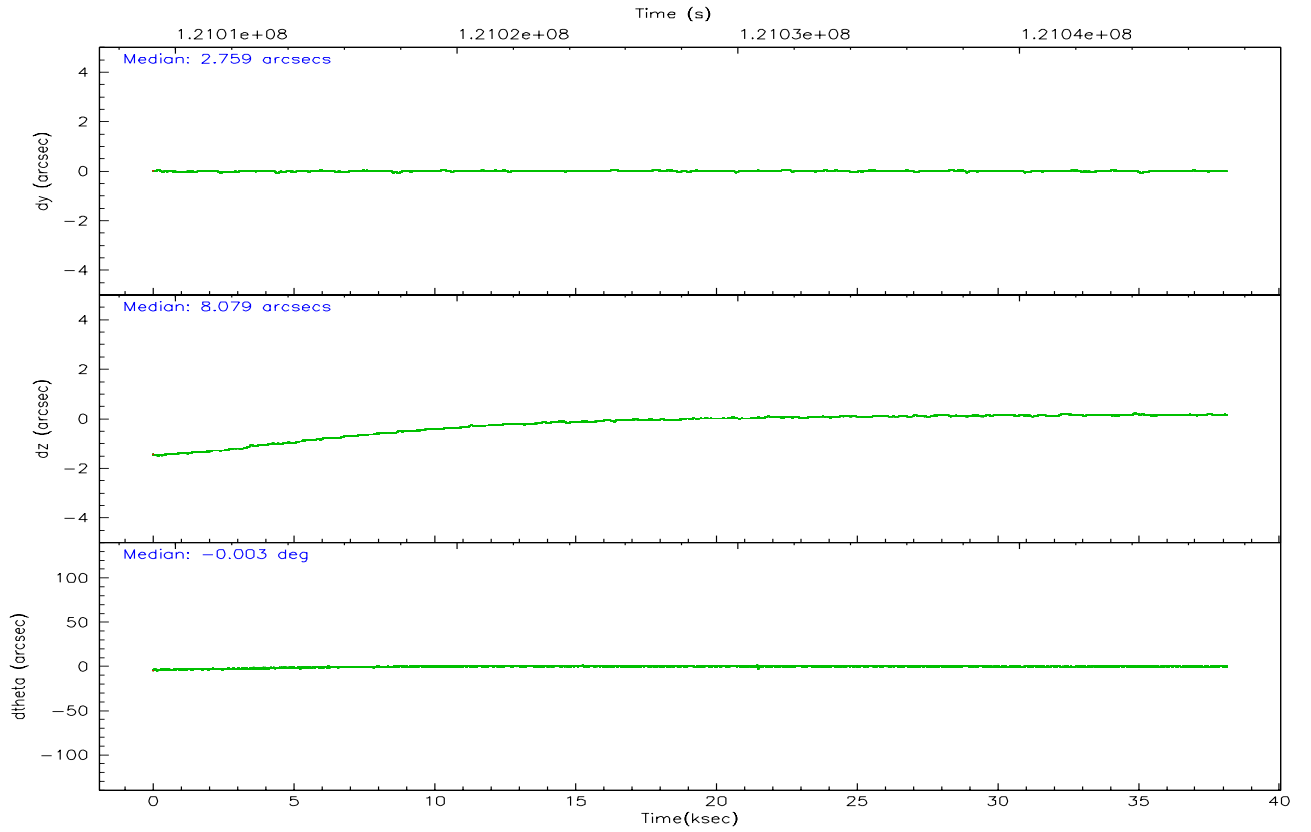
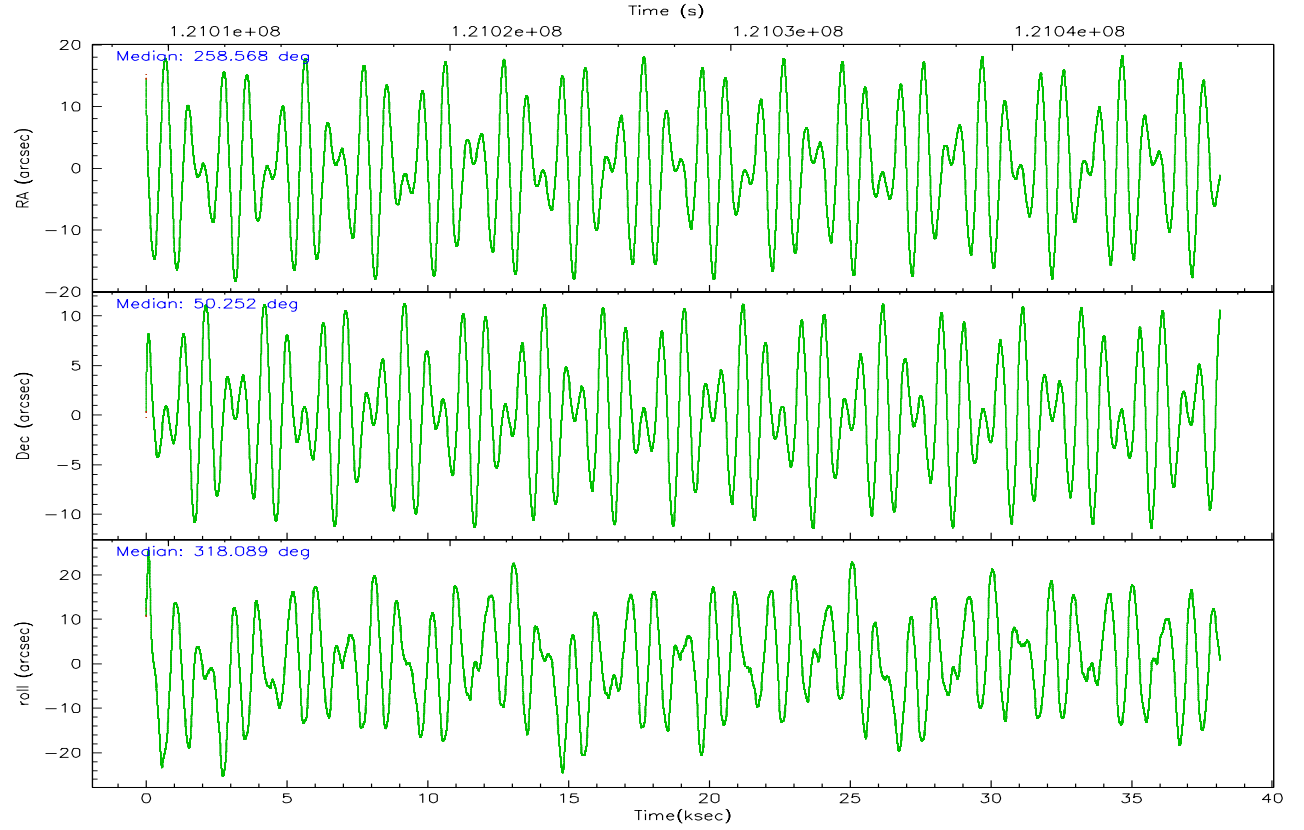
	ccd 2	ccd 3	ccd 6	ccd 7	ccd 8
grade 0 events	11905	11964	11351	12425	20317
	4%	4%	4%	3%	6%
grade 1 events	89	105	100	291	173
	0%	0%	0%	0%	0%
grade 2 events	6055	5742	5946	25961	13477
	2%	2%	2%	8%	4%
grade 3 events	2614	2651	2780	11938	6804
	1%	1%	1%	3%	2%
grade 4 events	2514	2652	2717	11932	6345
	1%	1%	1%	3%	2%
grade 5 events	8401	9723	10361	30669	13242
	3%	3%	4%	9%	4%
grade 6 events	4806	5167	5846	69876	16390
	2%	2%	2%	21%	5%
grade 7 events	202216	206688	210301	155976	236533
	84%	84%	84%	48%	75%

2.2 Compared Parameters

Parameter	Planned	Actual	Parameter	Planned	Actual
Instrument	ACIS	ACIS	Obspar format version number	6	6
Detector	ACIS-23678	ACIS-23678	Obspar file type	PREDICTED	ACTUAL
Grating	NONE	NONE	Obspar update status	NONE	UPDATED
Data mode	VFAINT	VFAINT	Number of optional ACIS chips dropped	0	0
Observation mode	POINTING	POINTING	On-chip summing requested	N	N
Pointing RA	258.526731	258.5685437834532	Subarray requested	NONE	NONE
Pointing Dec	50.257622	50.25232183276989	Alternating exposures requested	N	N
Pointing Roll	317.971290	318.0957718242655	Primary exposure time	0.000000	3.1
SIM focus pos (mm)	-0.684267	-0.6828225247311905			
SIM defocus (mm)	0	0.001444936568705701			
SIM translation stage pos (mm)	-190.132523	-190.1400660498719			
SIM translation stage offset (mm)	0	0.00754346686406393			
Observation start time	121009364.184000	121008304.76545			
Observation start date	2001-11-01T13:41:40	2001-11-01T13:25:04			
Observation end time	121047364.184000	121047970.72952			
Observation end date	2001-11-02T00:15:00	2001-11-02T00:26:10			
Read mode	TIMED	TIMED			

2.3 Aspect



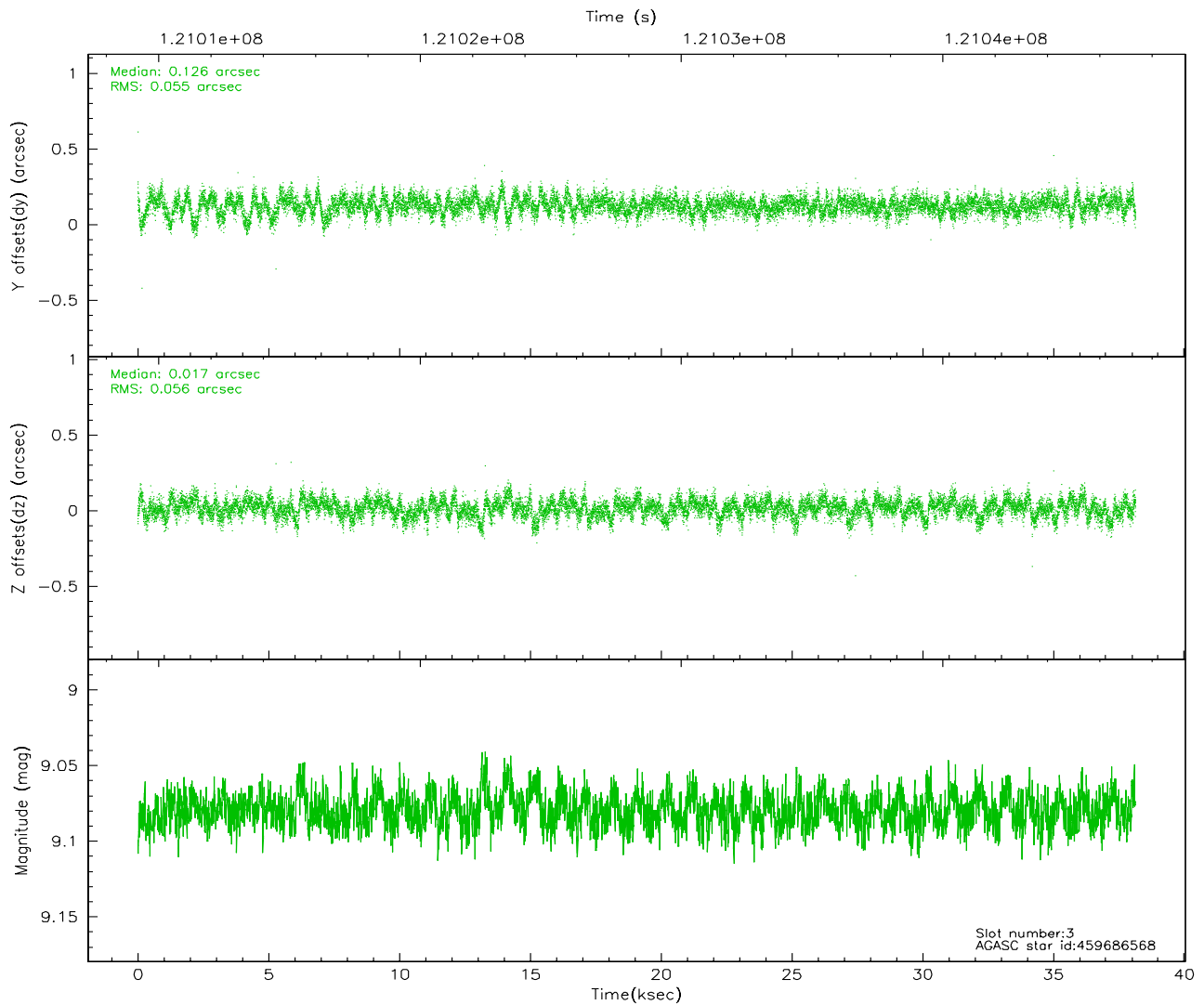
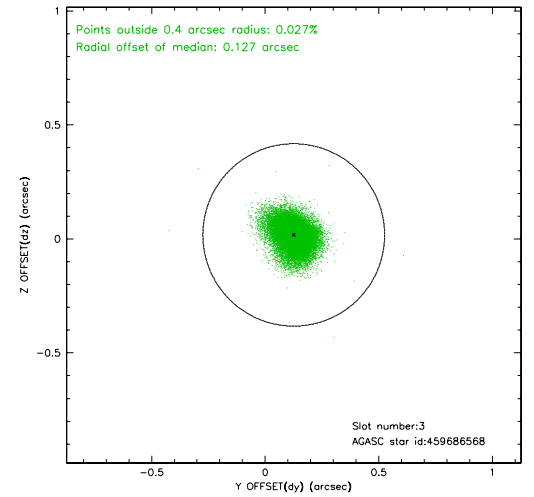
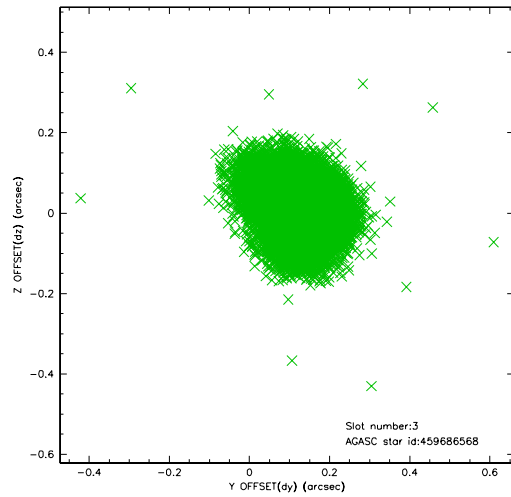


Slot Statistics

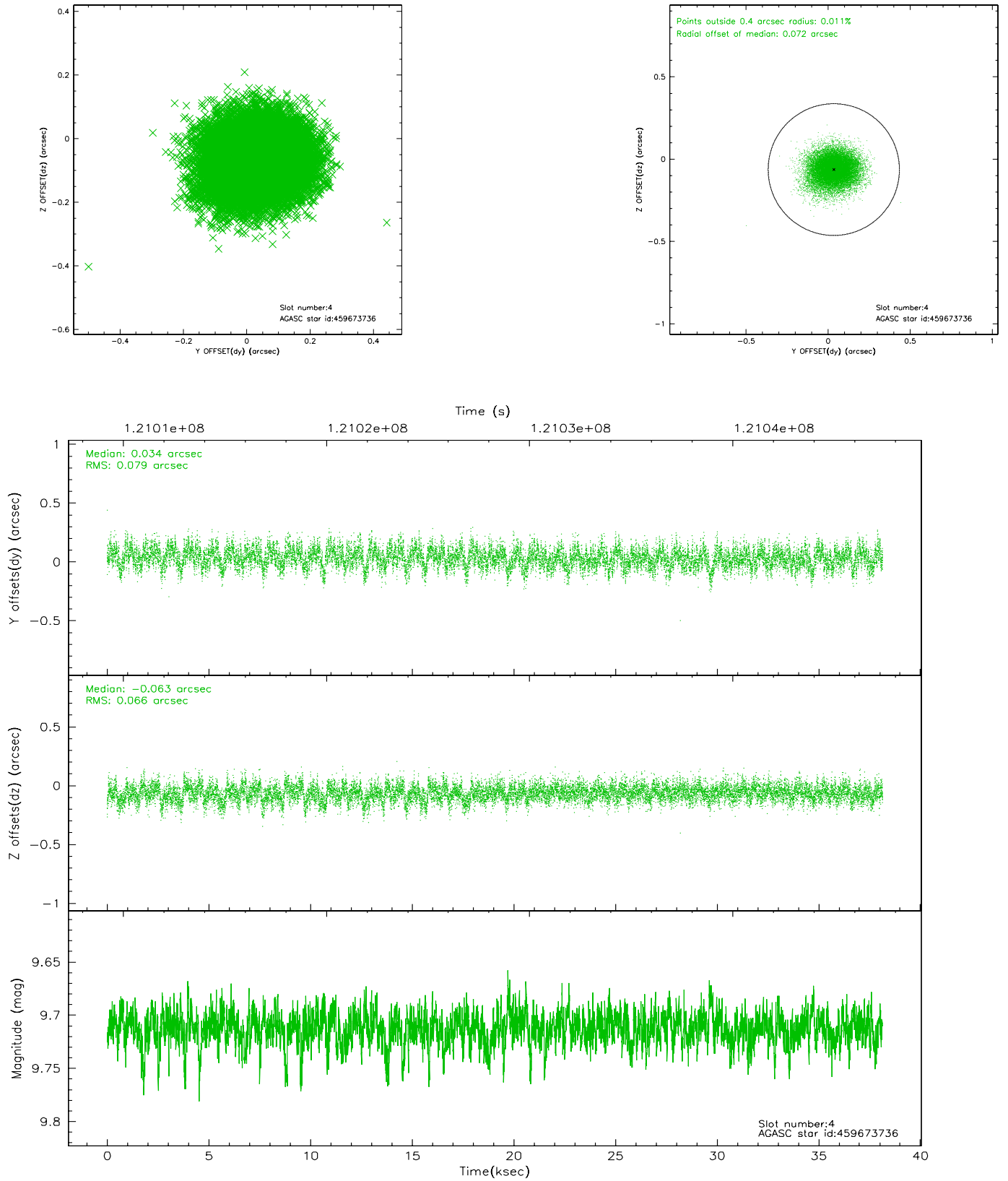
slot	status	id	mag	n_pts	med_dy	med_dz	dr1	dr2	ra	dec	mean_y	mean_z
0	FID	ACIS-S-2	7.11	9306	0.009	0.023	0.009	0.020	0.000000	0.000000	-755.40	-1729.01
1	FID	ACIS-S-4	7.20	9306	-0.089	-0.010	0.006	0.013	0.000000	0.000000	2157.78	179.40
2	FID	ACIS-S-5	7.24	9306	0.050	-0.003	0.008	0.018	0.000000	0.000000	-1808.15	173.13
3	GUIDE	459686568	9.08	18605	0.126	0.017	0.082	0.138	258.676405	50.037938	787.45	-354.99
4	GUIDE	459673736	9.71	18563	0.034	-0.063	0.109	0.180	258.305743	50.657677	-1338.42	732.75
5	GUIDE	459276592	10.00	18520	-0.153	0.040	0.182	0.346	258.370990	49.944856	486.41	-1077.24
6	GUIDE	459280992	10.00	18602	-0.036	-0.004	0.112	0.189	258.359225	49.736794	966.68	-1653.07
7	GUIDE	459276960	9.65	18590	0.036	0.010	0.113	0.187	258.304821	49.575360	1260.48	-2170.46

2.4 Star Slots

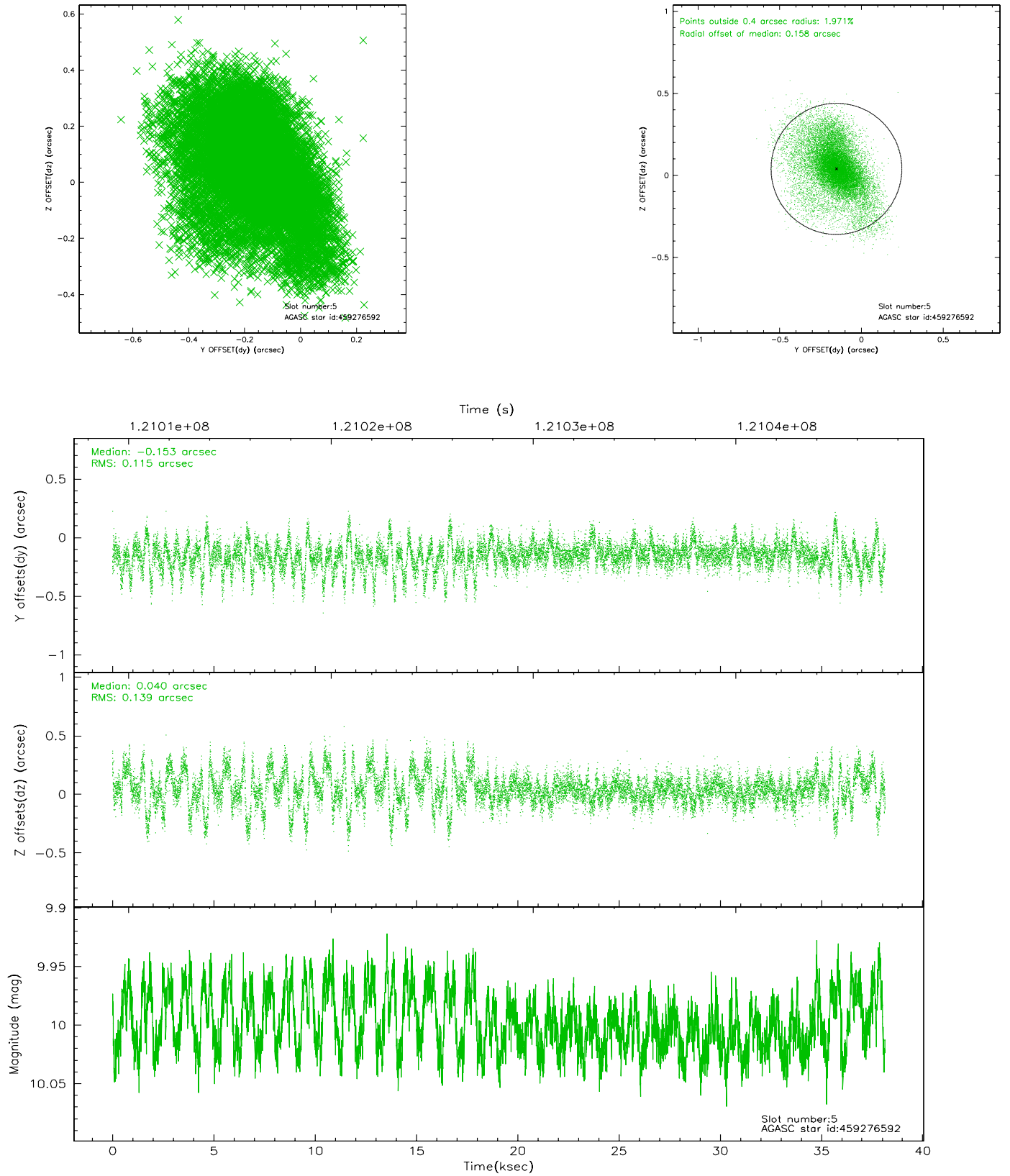
2.4.1 Slot 3



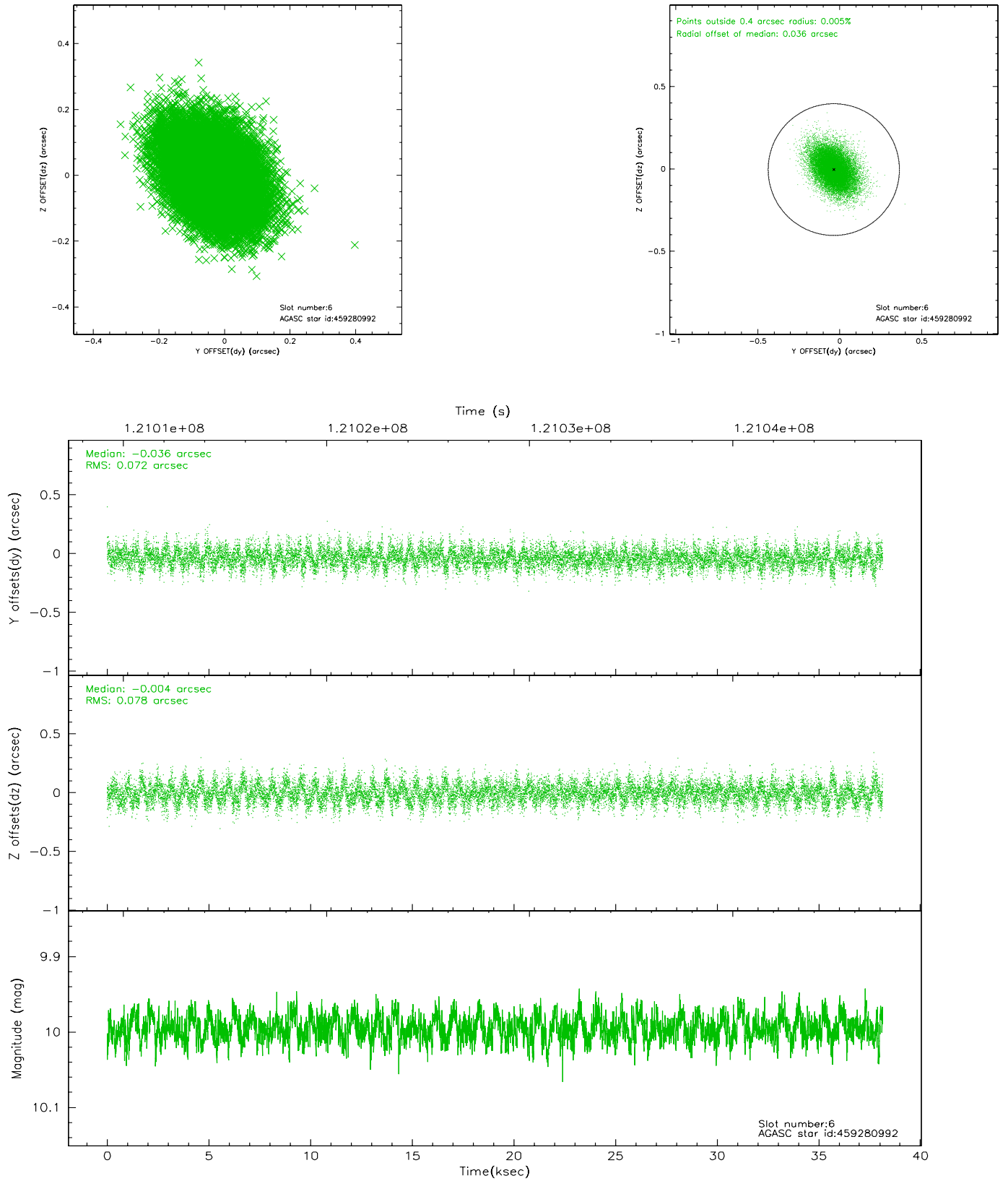
2.4.2 Slot 4



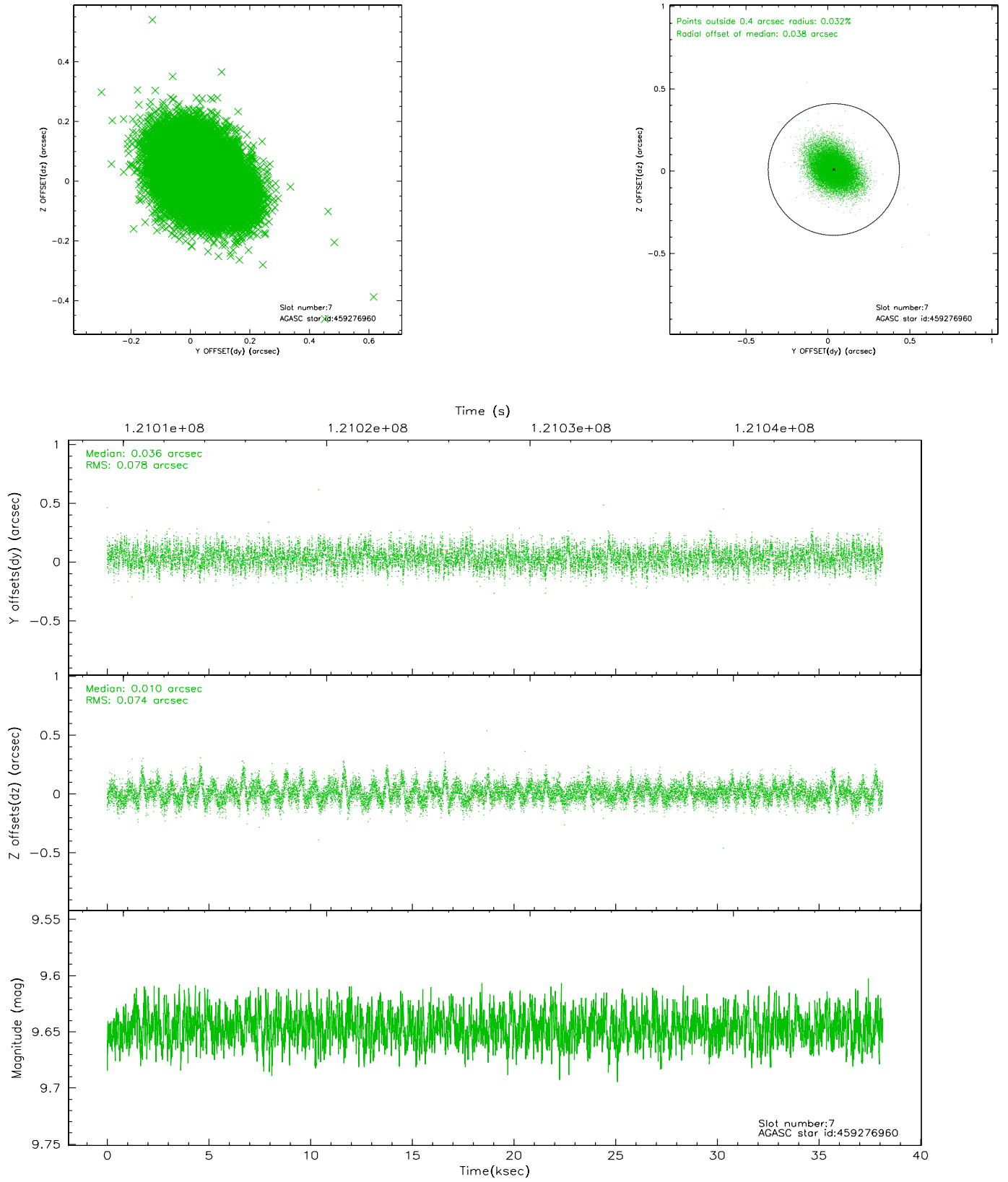
2.4.3 Slot 5



2.4.4 Slot 6

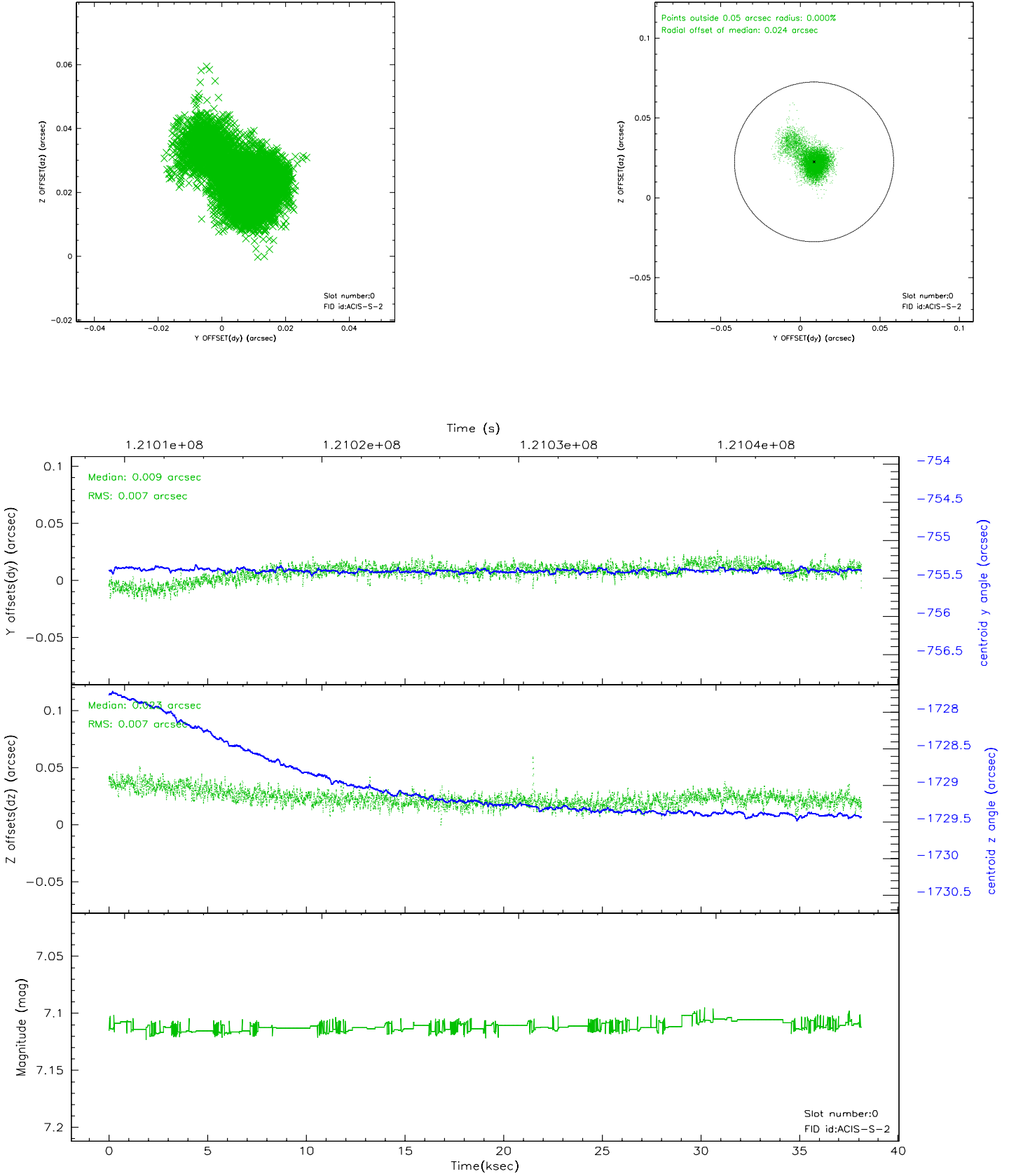


2.4.5 Slot 7

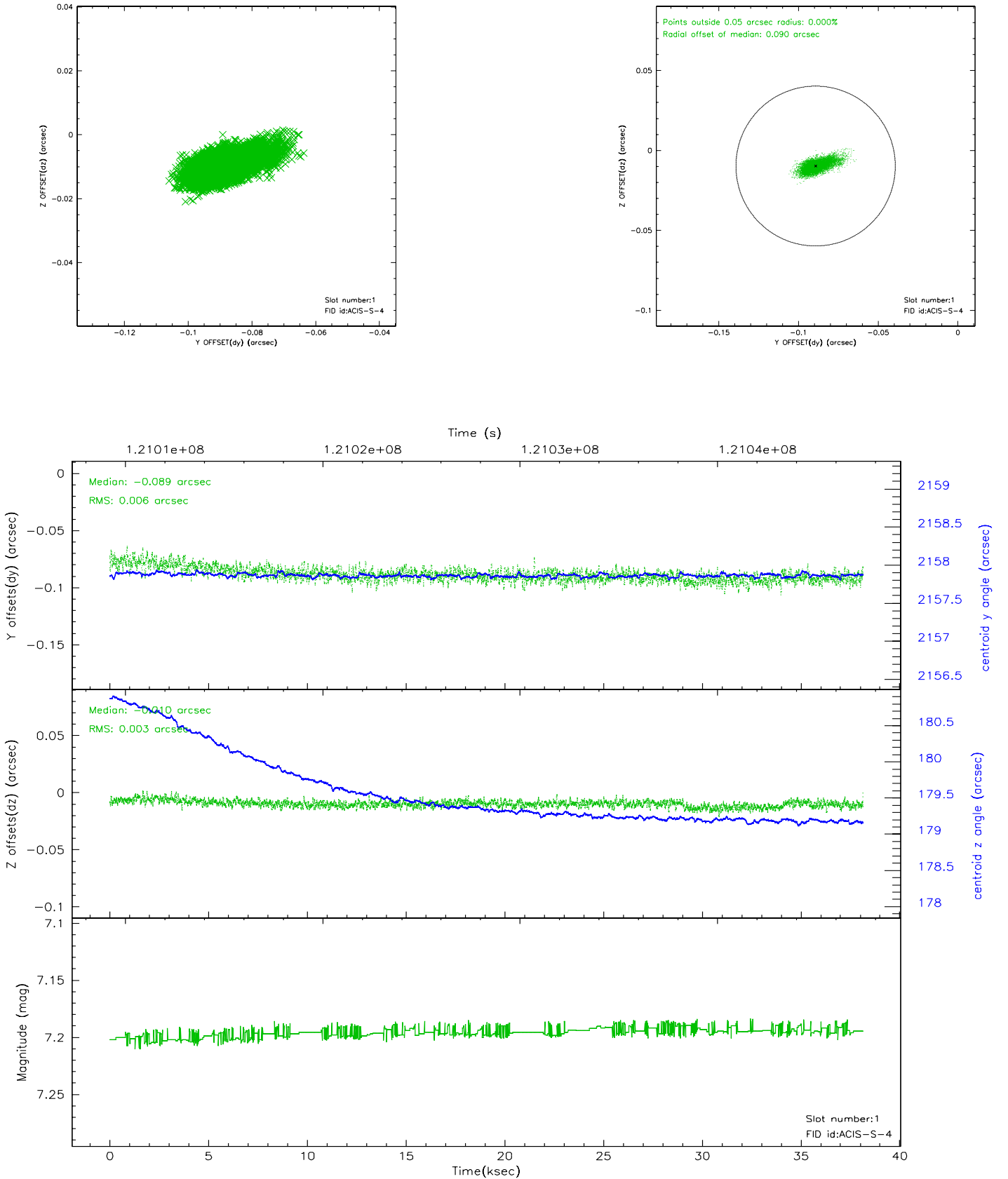


2.5 FID Slots

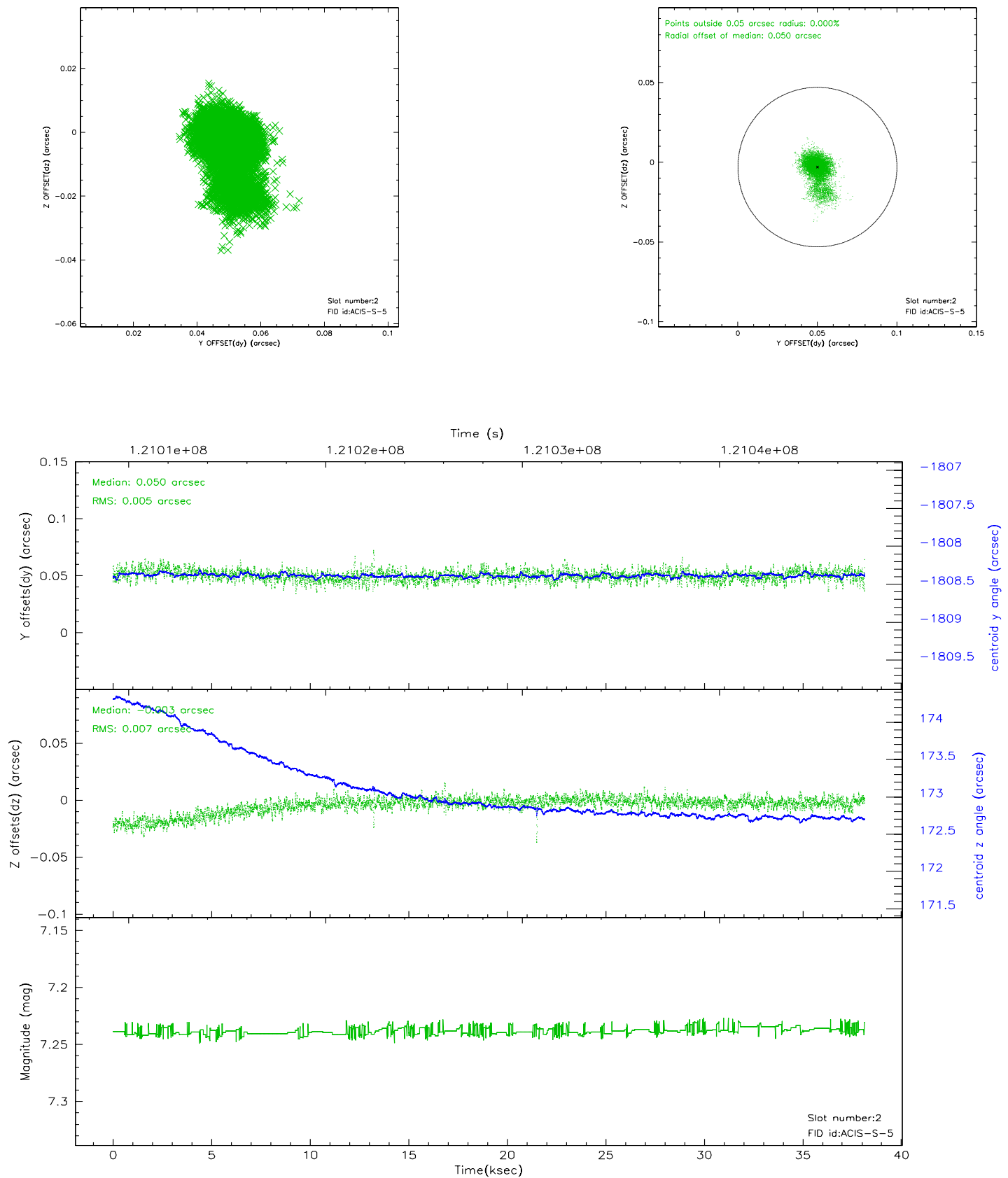
2.5.1 Slot 0



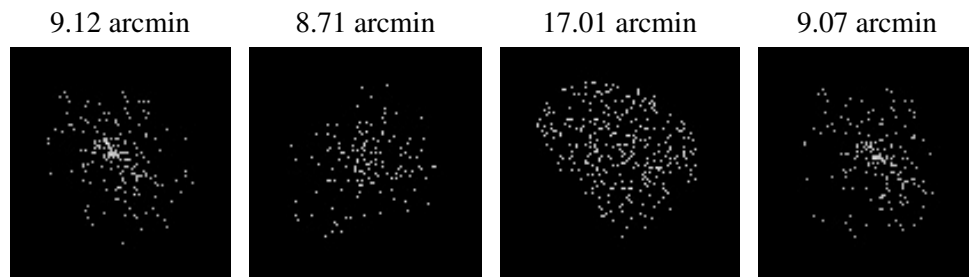
2.5.2 Slot 1



2.5.3 Slot 2



3 Point Sources



A Summary

A.1 Status

V&V Scientist	Doug Morgan
V&V Date (YYYY-MM-DD)	2007.01.14
V&V Edition	1
V&V Disposition and Status	OK
V&V Charge Time	38.142

A.2 Comments