

# V&V Reference Report

## L2 ASCDS Version : 7.6.9

Observation 2220 - L2 Version 001  
Chandra X-Ray Center

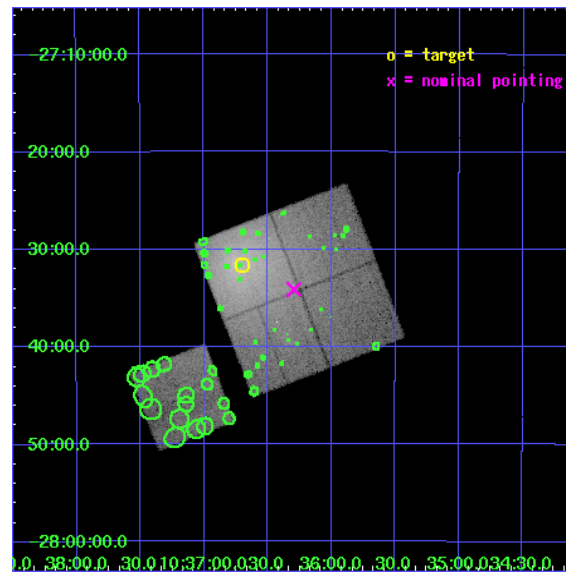
L2 Processing Date : Nov 28 2006

## Contents

<b>1</b>	<b>Front</b>	<b>2</b>
<b>2</b>	<b>OBI</b>	<b>3</b>
2.1	OBI . . . . .	3
2.1.1	Images . . . . .	3
2.1.2	Bias . . . . .	3
2.1.3	Parameters . . . . .	4
2.1.4	Events . . . . .	4
2.2	Compared Parameters . . . . .	5
2.3	Aspect . . . . .	6
2.4	Star Slots . . . . .	9
2.4.1	Slot 3 . . . . .	9
2.4.2	Slot 4 . . . . .	10
2.4.3	Slot 5 . . . . .	11
2.4.4	Slot 6 . . . . .	12
2.4.5	Slot 7 . . . . .	13
2.5	FID Slots . . . . .	14
2.5.1	Slot 0 . . . . .	14
2.5.2	Slot 1 . . . . .	15
2.5.3	Slot 2 . . . . .	16
<b>3</b>	<b>Point Sources</b>	<b>17</b>
<b>A</b>	<b>Summary</b>	<b>18</b>
A.1	Status . . . . .	18
A.2	Comments . . . . .	18

# 1 Front

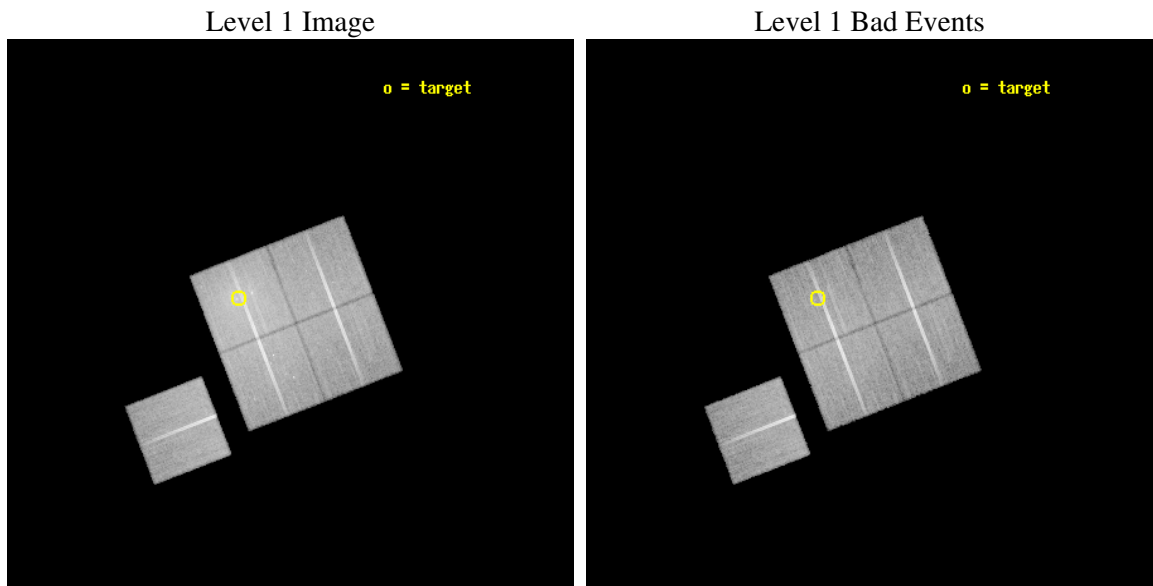
seq_num	800159
obs_id	2220
title	GRAVITATIONAL POTENTIAL PROFILE IN A1060CLUSTER OF GALAXIES
observer	Dr. Takaya Ohashi
object	A1060
dtcycle	0
cycle	P
ra_targ	159.175
dec_targ	-27.5275
ra_nom	159.0738409018
dec_nom	-27.568657641581
roll_nom	248.80543739926
revision	2
ontime	32320.599937856
liveltime	31898.307505589
ontime0	32311.177007303
ontime1	32314.317927614
ontime2	32320.599937856
ontime3	32320.599937856
ontime6	32317.45897761
l2events	290097



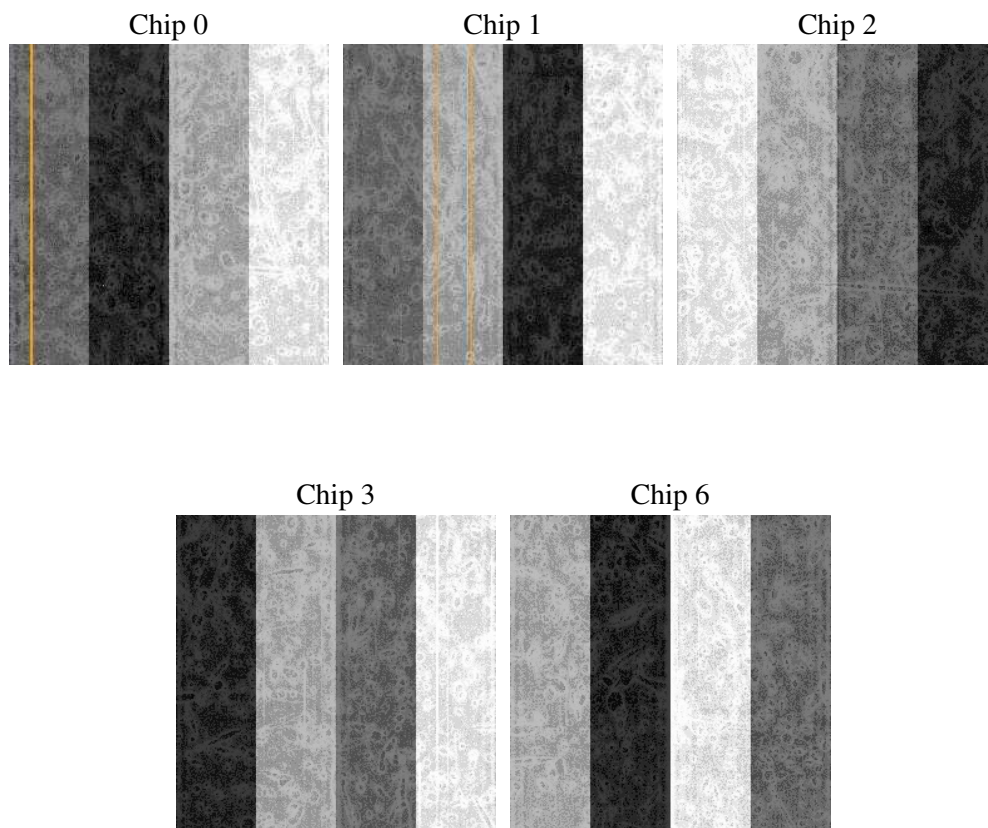
## 2 OBI

### 2.1 OBI

#### 2.1.1 Images



#### 2.1.2 Bias



### 2.1.3 Parameters

obi_num	0
ascdsver	7.6.9
caldsver	3.2.4
date	2006-11-28T18:59:21
revision	2

sched_exp_time	32137.786000
ontime	32355.437800437
ontime0	32346.014899805
ontime1	32349.155820116
ontime2	32355.437830359
ontime3	32355.437800437
ontime6	32352.296870112
l1events	1228879

### 2.1.4 Events

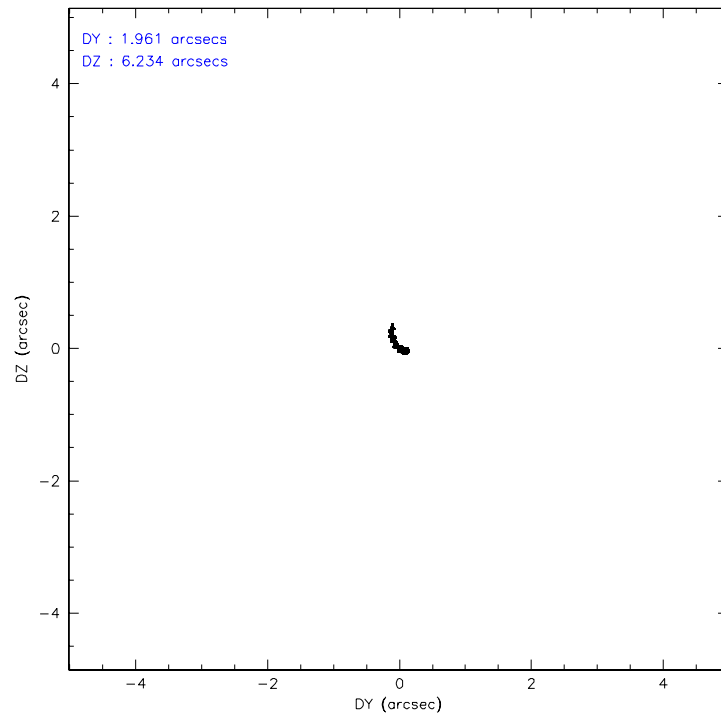
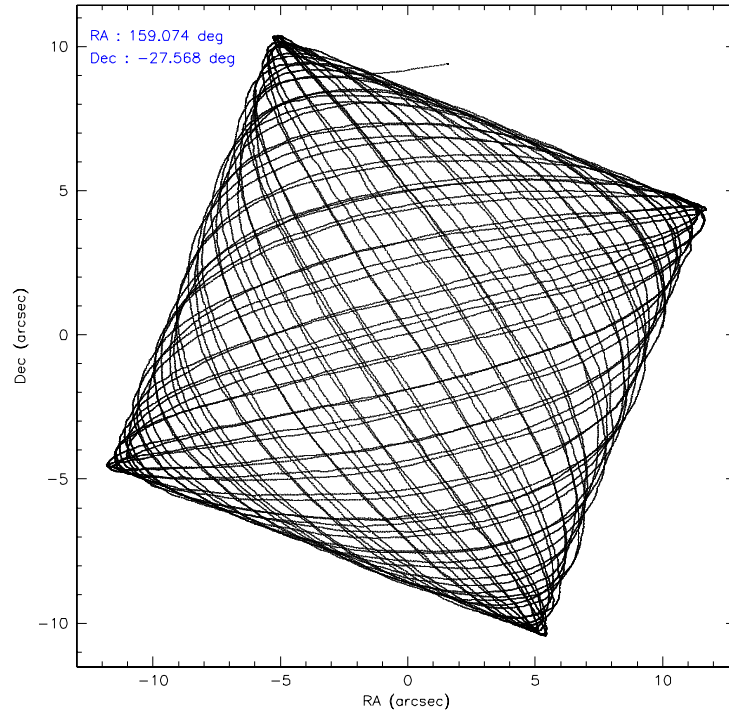
	ccd 0	ccd 1	ccd 2	ccd 3	ccd 6
level 1 events	204255	225504	247543	328300	223277
rejected events	166367	172149	192055	191702	190250
rejected %	81%	76%	77%	58%	85%

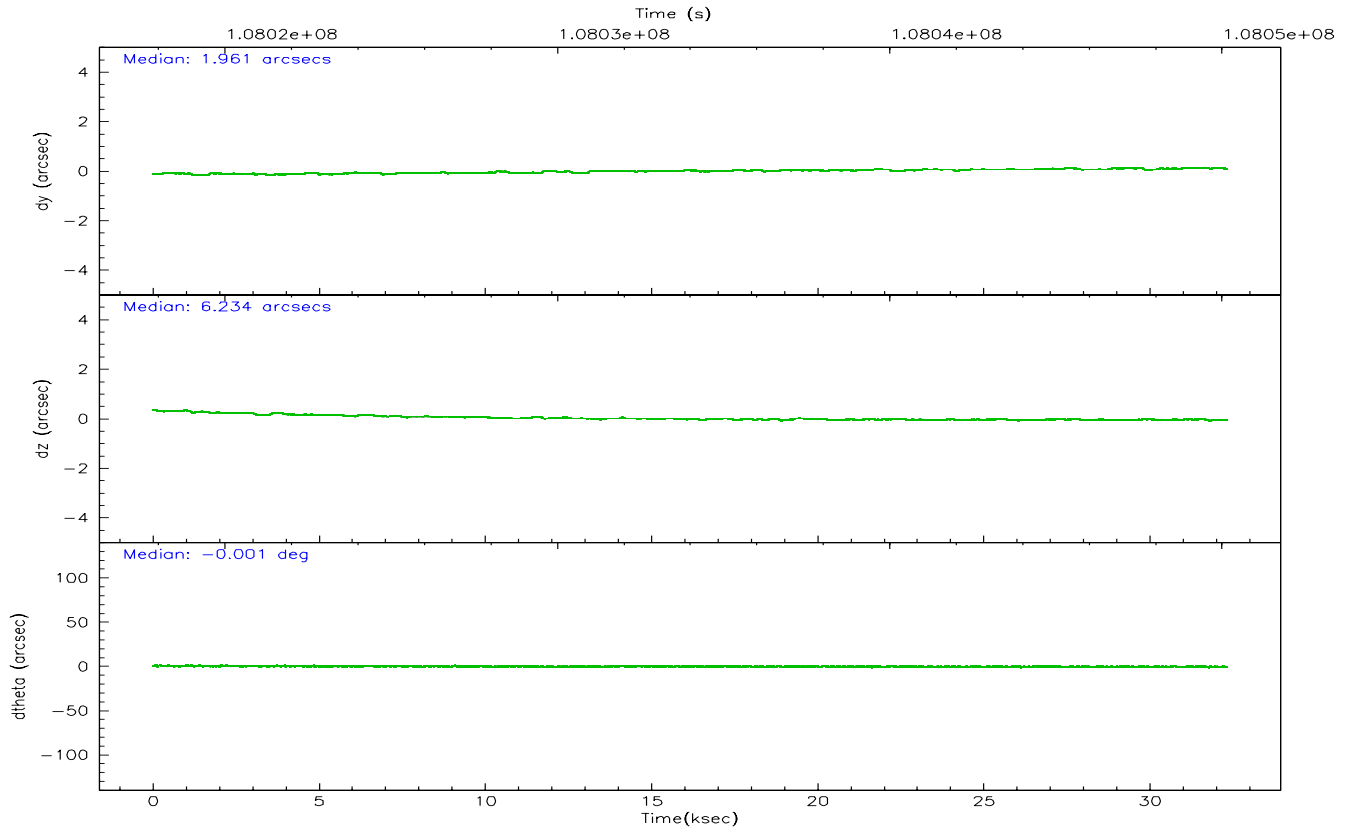
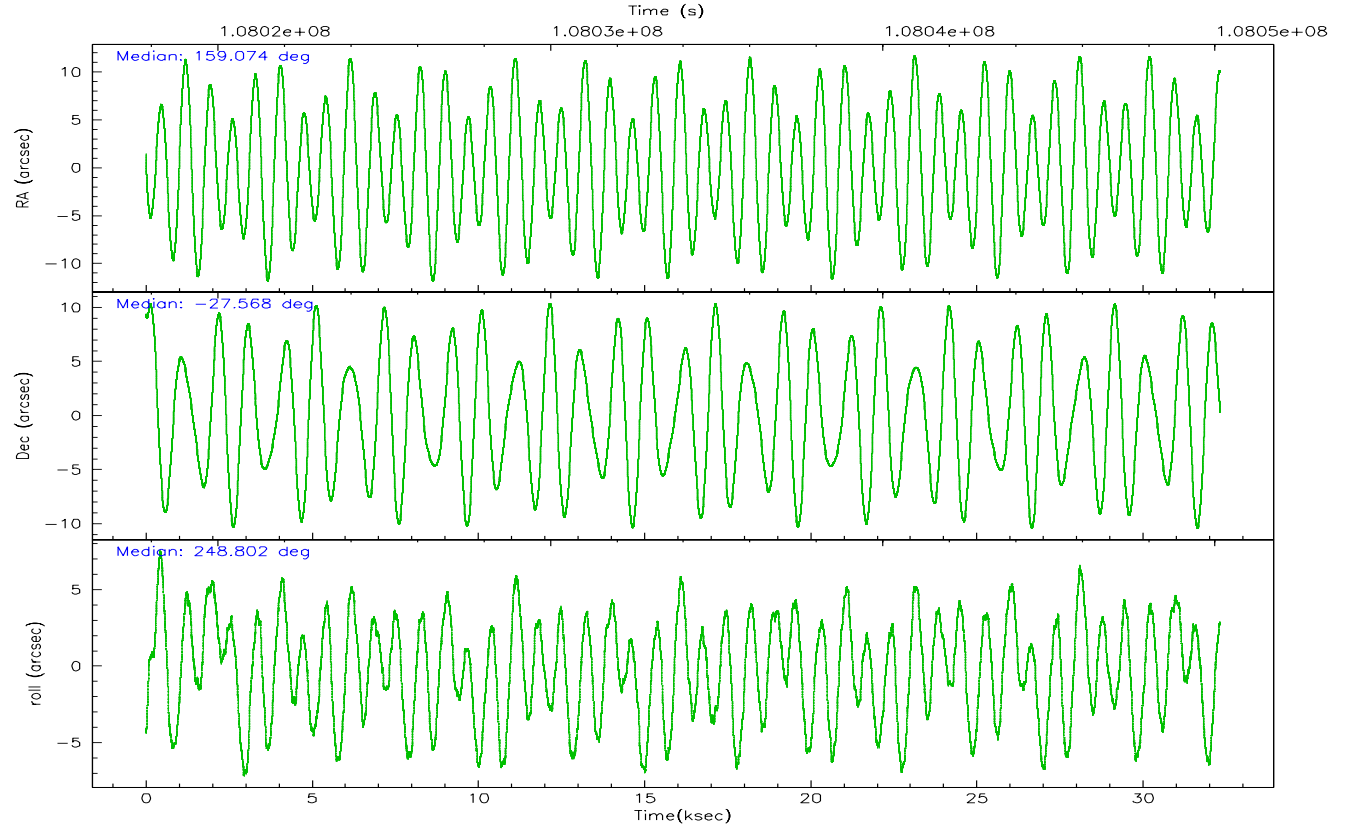
	ccd 0	ccd 1	ccd 2	ccd 3	ccd 6
grade 0 events	21385	33724	36536	103663	17148
	10%	14%	14%	31%	7%
grade 1 events	161	178	204	448	124
	0%	0%	0%	0%	0%
grade 2 events	6407	7737	8184	15766	5800
	3%	3%	3%	4%	2%
grade 3 events	2959	3413	3093	5383	2599
	1%	1%	1%	1%	1%
grade 4 events	2664	3273	3044	5555	2643
	1%	1%	1%	1%	1%
grade 5 events	7519	7956	7287	8558	8710
	3%	3%	2%	2%	3%
grade 6 events	4524	5272	4692	6390	4886
	2%	2%	1%	1%	2%
grade 7 events	158636	163951	184503	182537	181367
	77%	72%	74%	55%	81%

## 2.2 Compared Parameters

Parameter	Planned	Actual	Parameter	Planned	Actual
Instrument	ACIS	ACIS	Obspar format version number	6	6
Detector	ACIS-01236	ACIS-01236	Obspar file type	PREDICTED	ACTUAL
Grating	NONE	NONE	Obspar update status	NONE	UPDATED
Data mode	VFAINT	VFAINT	Number of optional ACIS chips dropped	0	0
Observation mode	POINTING	POINTING	On-chip summing requested	N	N
Pointing RA	159.069079	159.0738409018028	Subarray requested	NONE	NONE
Pointing Dec	-27.541555	-27.56865764158058	Alternating exposures requested	N	N
Pointing Roll	248.594549	248.8054373992632	Primary exposure time	0.000000	3.1
SIM focus pos (mm)	-0.782348	-0.7809083437167272			
SIM defocus (mm)	0	0.001439871863259334			
SIM translation stage pos (mm)	-233.592463	-233.5874344608287			
SIM translation stage offset (mm)	0	-0.005018542100998502			
Observation start time	108018016.184000	108017003.76637			
Observation start date	2001-06-04T04:59:12	2001-06-04T04:43:23			
Observation end time	108050154.184000	108050467.96767			
Observation end date	2001-06-04T13:54:50	2001-06-04T14:01:07			
Read mode	TIMED	TIMED			

## 2.3 Aspect





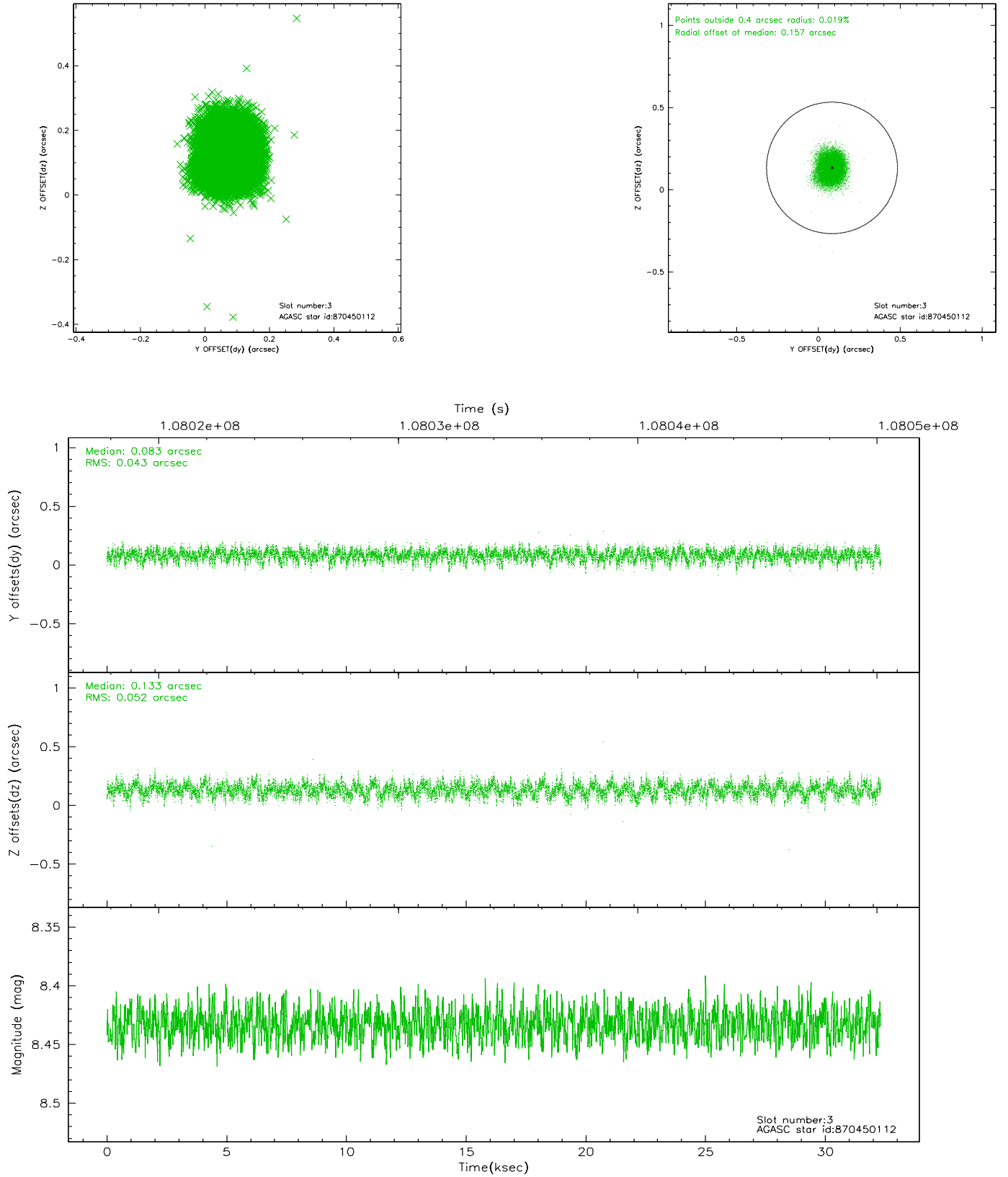
### Slot Statistics

slot	status	id	mag	n_pts	med_dy	med_dz	dr1	dr2	ra	dec	mean_y	mean_z
0	FID	ACIS-I-1	7.25	7883	-0.027	0.037	0.006	0.011	0.000000	0.000000	937.82	-829.63
1	FID	ACIS-I-5	7.24	7881	-0.013	0.036	0.006	0.011	0.000000	0.000000	-1810.21	1067.88
2	FID	ACIS-I-6	7.26	7882	-0.051	-0.003	0.007	0.011	0.000000	0.000000	403.32	1712.37
3	GUIDE	870450112	8.43	15762	0.083	0.133	0.072	0.117	159.404165	-28.068797	1381.02	1683.97
4	GUIDE	870453496	9.14	15763	-0.151	-0.006	0.105	0.169	159.887499	-27.253052	-1914.11	2062.16
5	GUIDE	868746184	9.56	15689	0.124	-0.128	0.096	0.160	158.390269	-27.831577	1767.42	-1629.25
6	GUIDE	868746256	9.62	15763	0.144	0.055	0.092	0.152	159.026799	-28.098430	1916.73	606.22
7	GUIDE	868754984	10.34	15761	-0.205	-0.062	0.147	0.235	158.634720	-26.835736	-1853.15	-2226.31

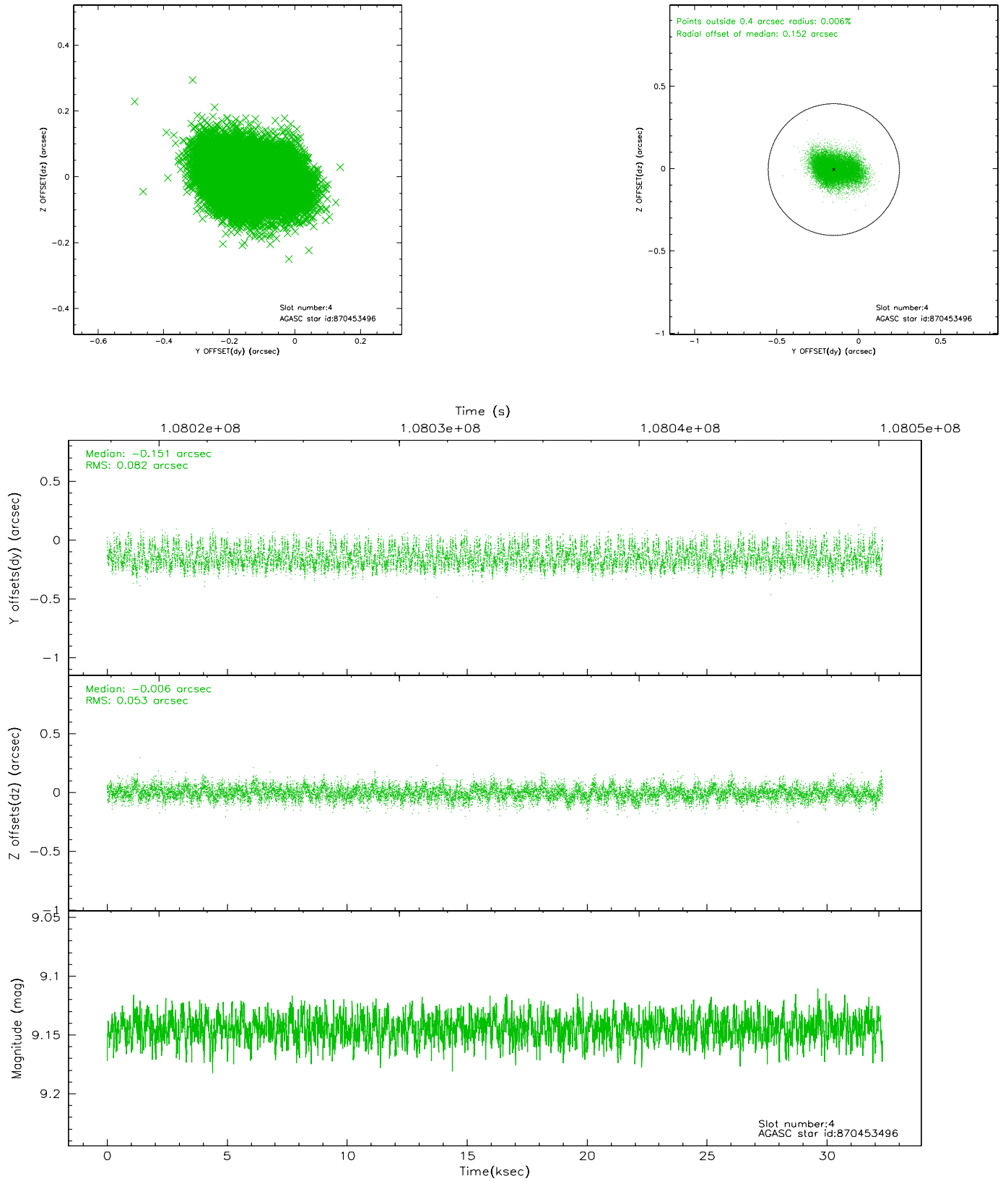


## 2.4 Star Slots

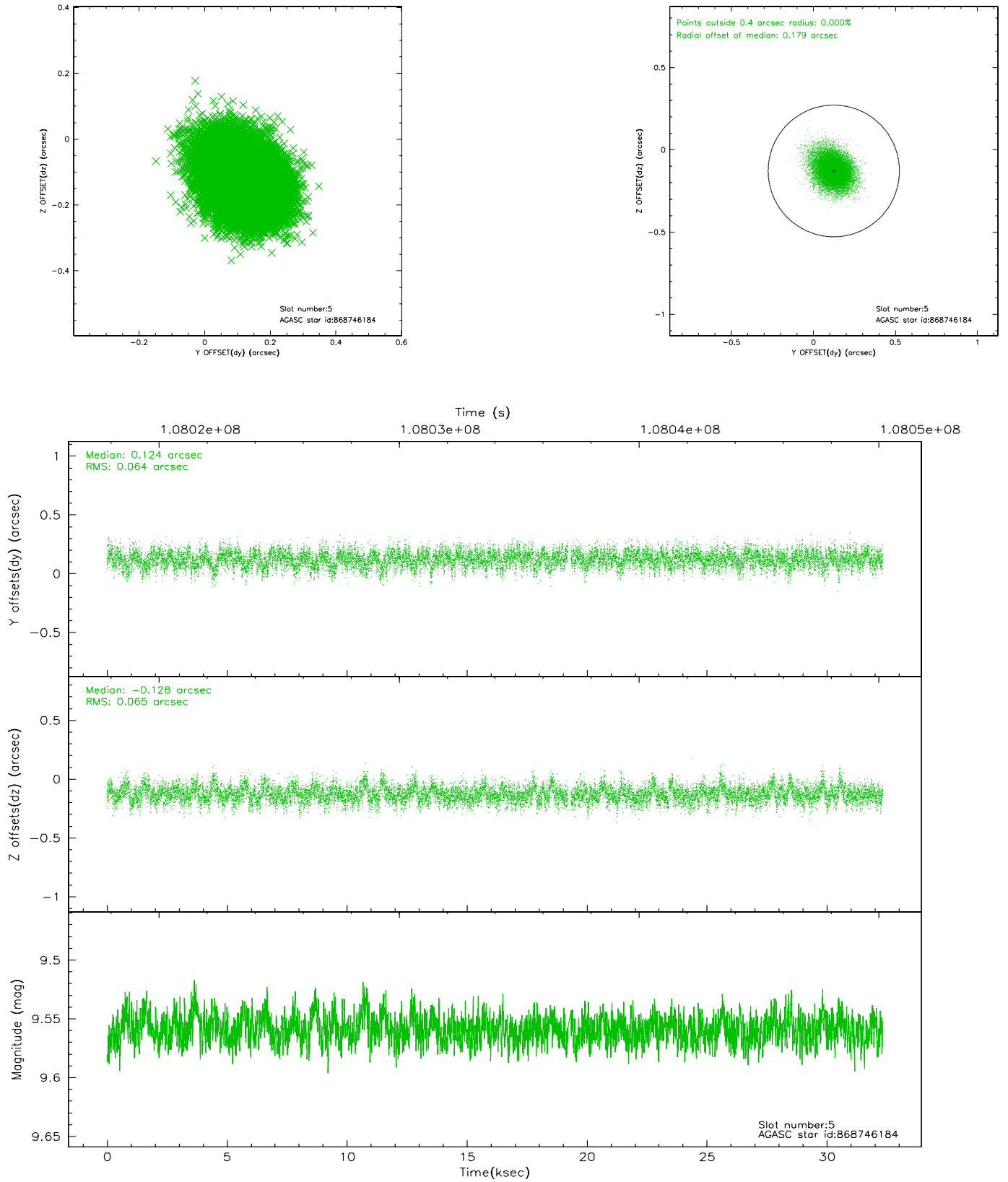
### 2.4.1 Slot 3



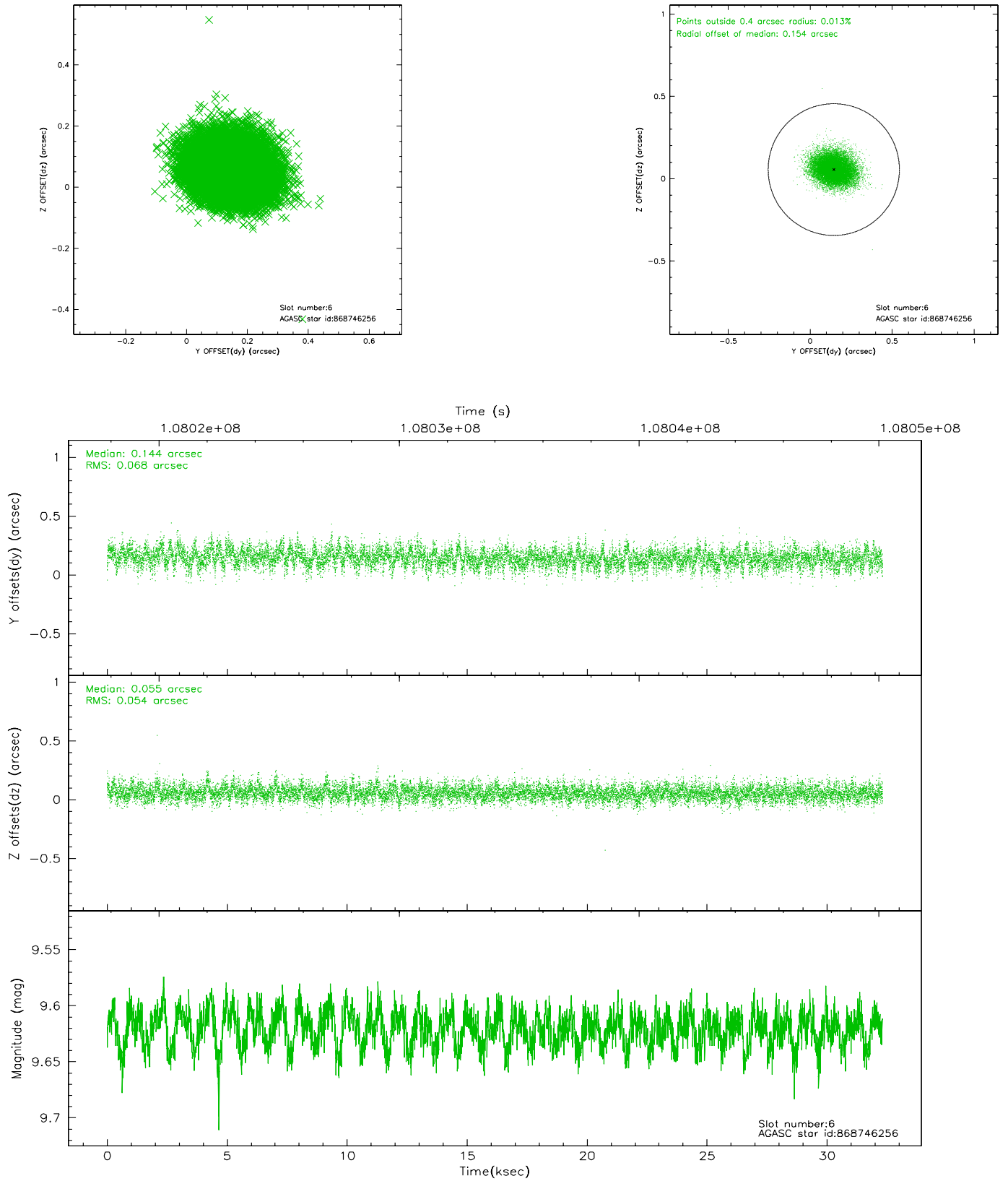
## 2.4.2 Slot 4



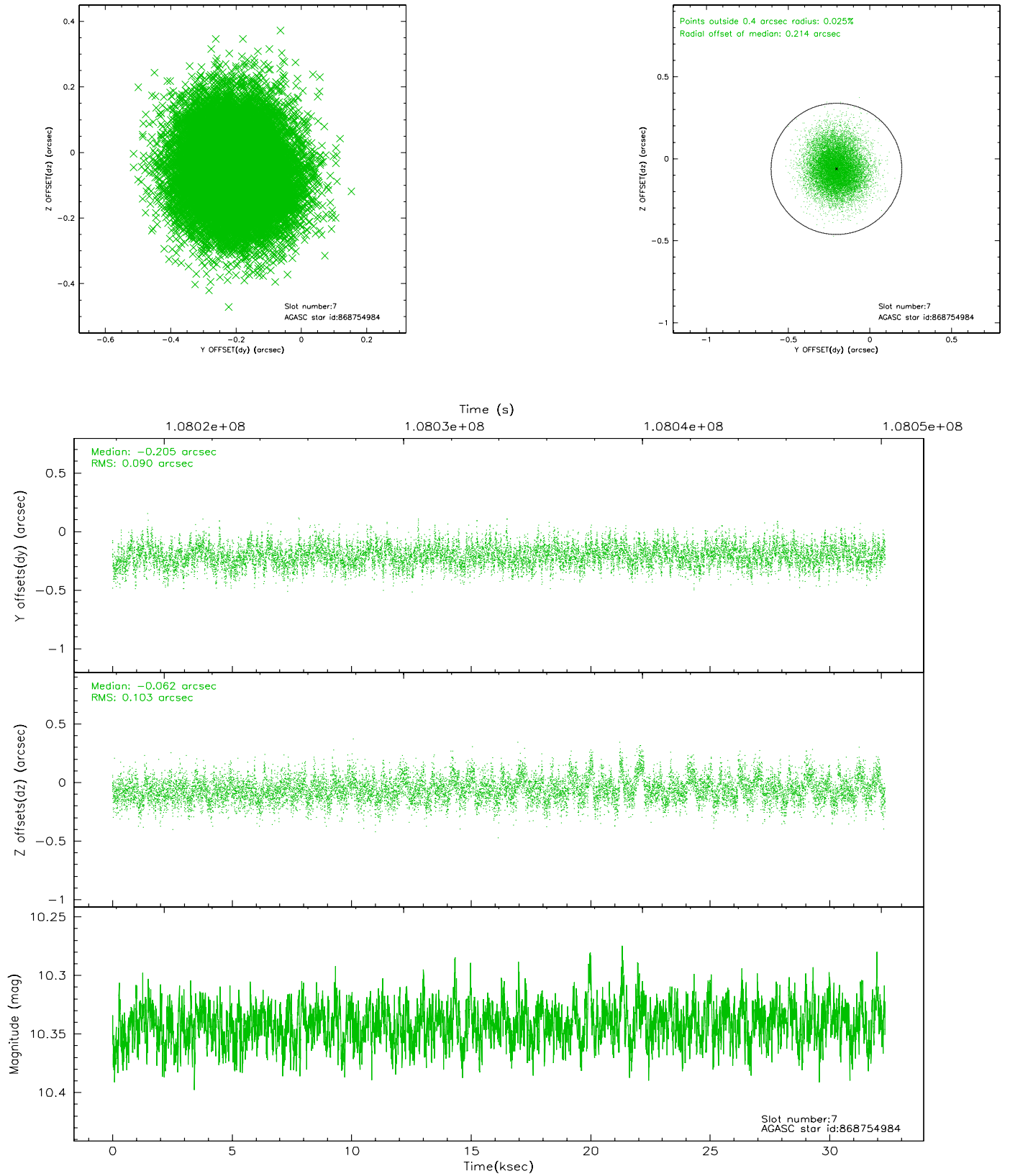
### 2.4.3 Slot 5



## 2.4.4 Slot 6

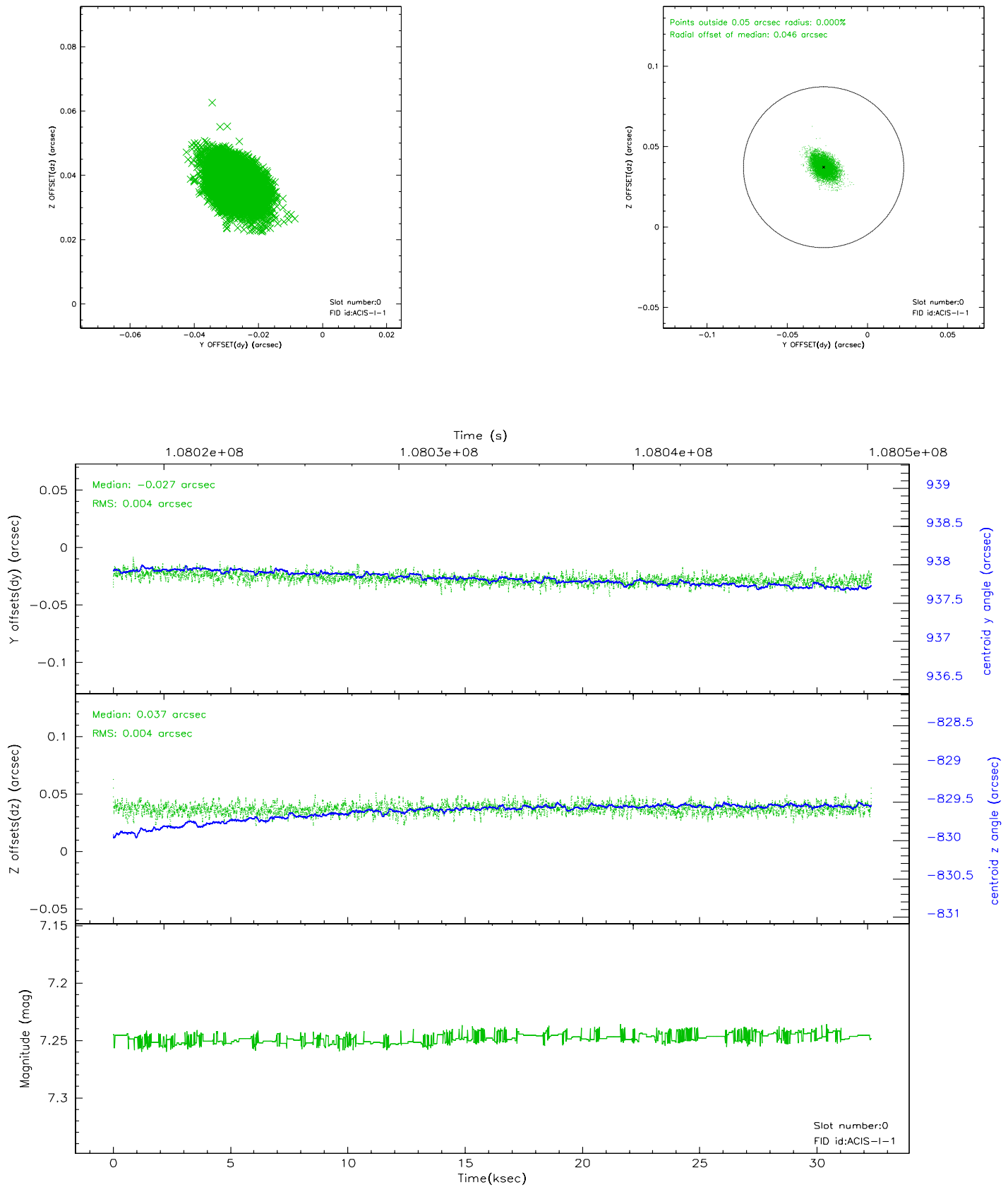


## 2.4.5 Slot 7

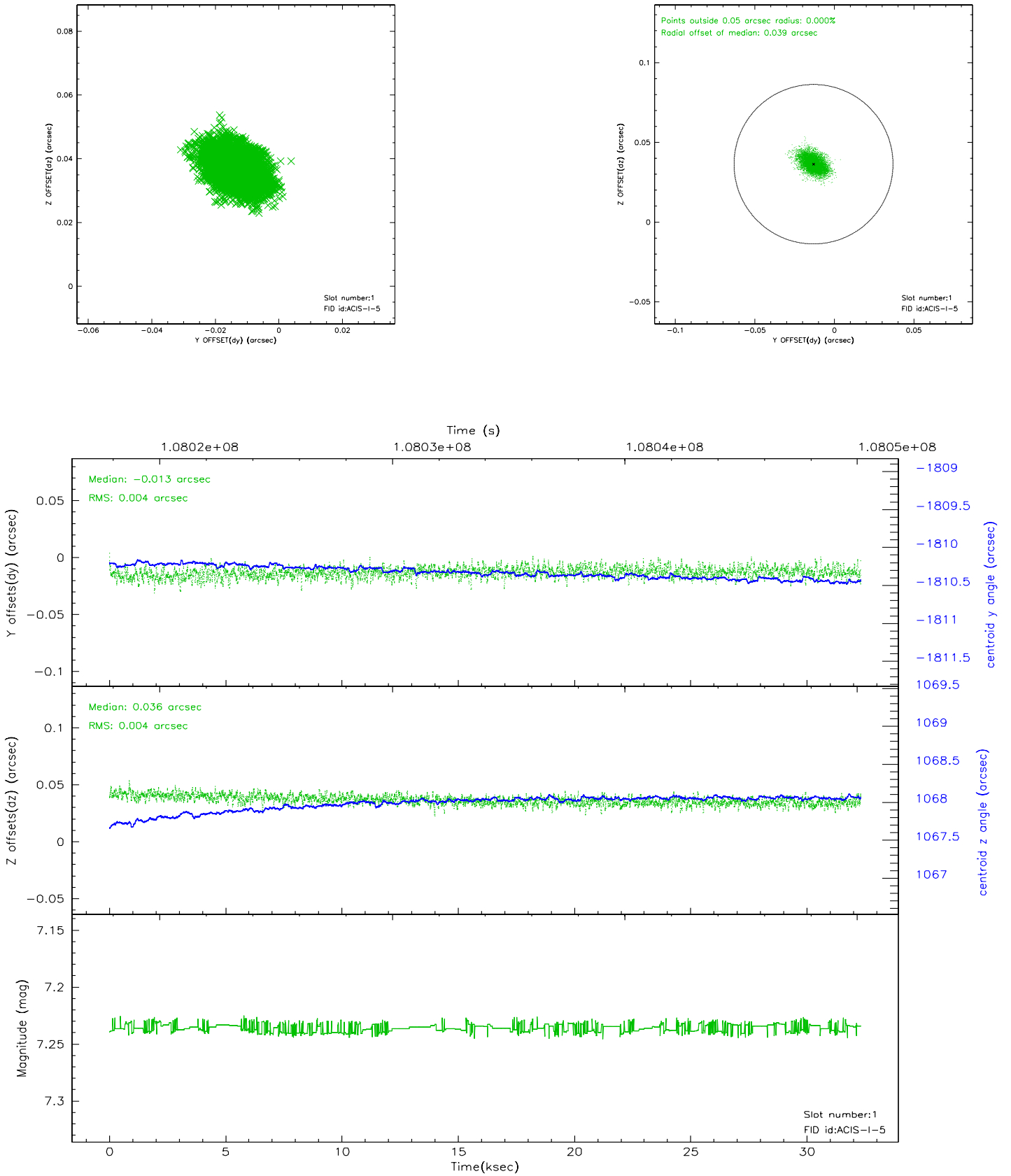


## 2.5 FID Slots

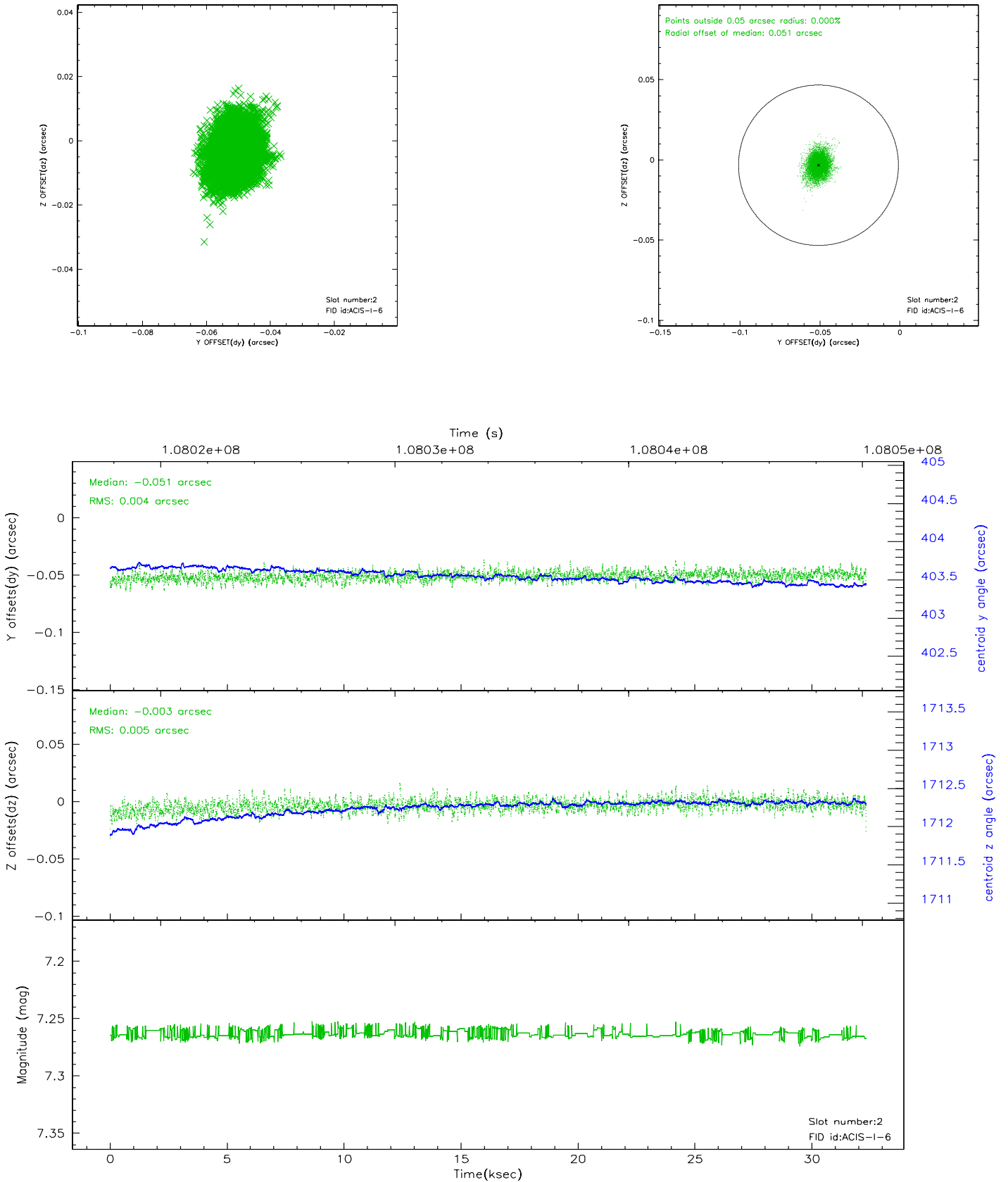
### 2.5.1 Slot 0



## 2.5.2 Slot 1

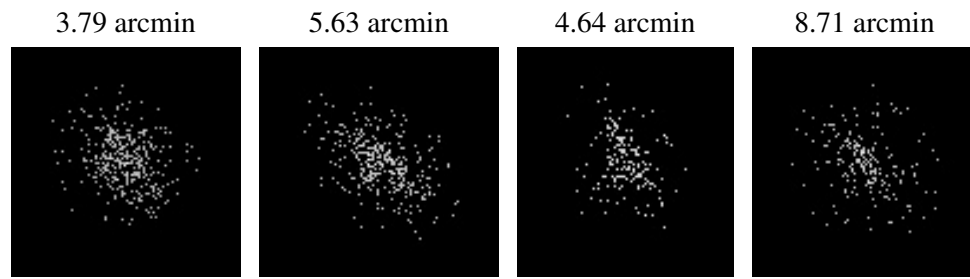


### 2.5.3 Slot 2





### 3 Point Sources



## A Summary

### A.1 Status

V&V Scientist	Beth Sundheim
V&V Date (YYYY-MM-DD)	2006.11.28
V&V Edition	1
V&V Disposition and Status	OK
V&V Charge Time	32.32

### A.2 Comments