

V&V Reference Report

L2 ASCDS Version : 8.4.5

Observation 2216 - L2 Version 3
Chandra X-Ray Center

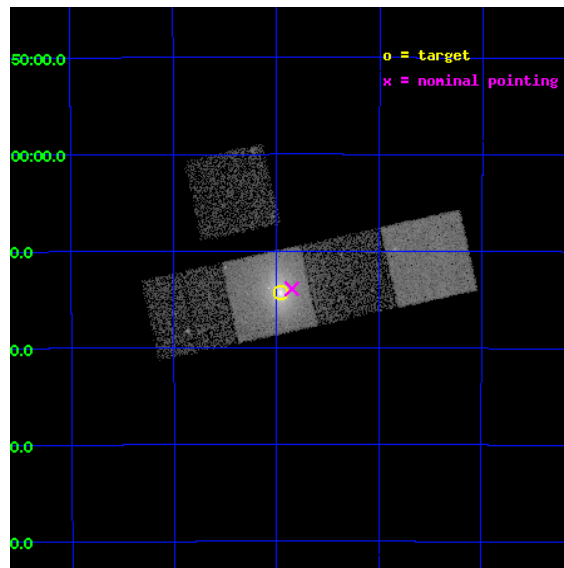
L2 Processing Date : Sep 16 2012

Contents

1	Front	2
2	OBI	3
2.1	OBI	3
2.1.1	Images	3
2.1.2	Bias	3
2.1.3	Parameters	4
2.1.4	Events	4
2.2	Compared Parameters	5
2.3	Aspect	6
2.4	Star Slots	9
2.4.1	Slot 3	9
2.4.2	Slot 4	10
2.4.3	Slot 5	11
2.4.4	Slot 6	12
2.4.5	Slot 7	13
2.5	FID Slots	14
2.5.1	Slot 0	14
2.5.2	Slot 1	15
2.5.3	Slot 2	16
A	Summary	17
A.1	Status	17
A.2	Comments	17

1 Front

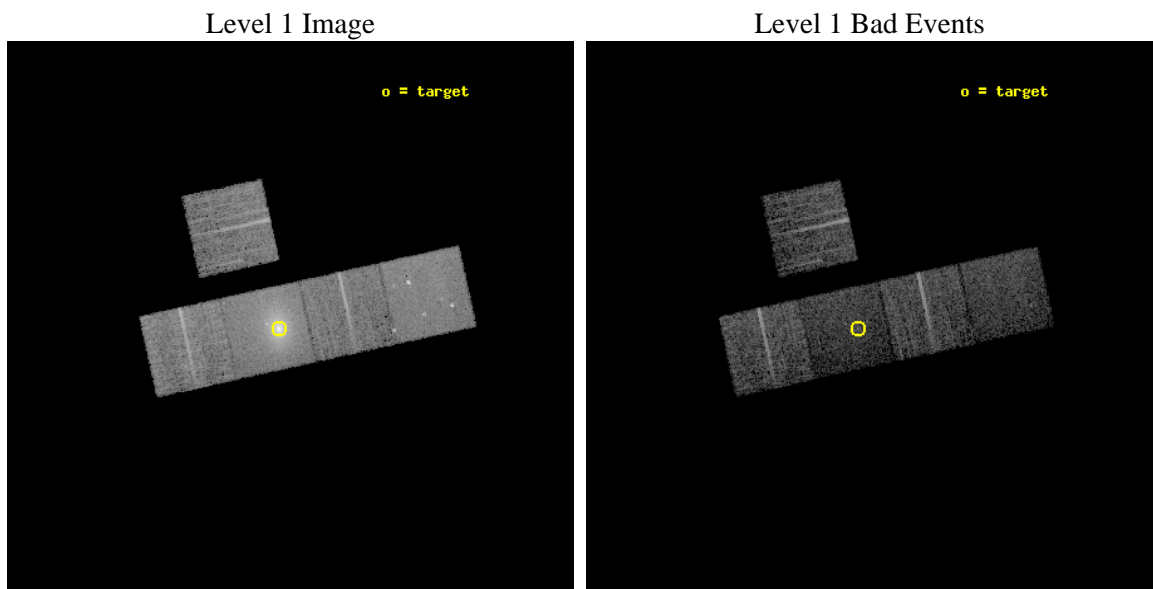
seq_num	800155	Sequence number
obs_id	2216	Observation id
title	THE INTERACTION BETWEEN CLUSTER CENTRAL RADIO SOURCES AND COOLING FLOWS	Proposal title
observer	Dr. CRAIG SARAZIN	Principal investigator
object	A3112	Source name
dtcycle	0	
cycle	P	events from which exps? Prim/Second/Both
ra_targ	49.490417	Observer's specified target RA [deg]
dec_targ	-44.238194	Observer's specified target Dec [deg]
ra_nom	49.462529805626	Nominal RA [deg]
dec_nom	-44.231924984635	Nominal Dec [deg]
roll_nom	167.58551692984	Nominal Roll [deg]
revision	3	Processing version of data
ontime	7349.7313536406	Sum of GTIs [s]
livetime	7253.7017027117	Livetime [s]
ontime3	7377.9999858141	Sum of GTIs [s]
ontime5	7377.9999858141	Sum of GTIs [s]
ontime6	7374.8590255678	Sum of GTIs [s]
ontime7	7349.7313536406	Sum of GTIs [s]
ontime8	7374.8590255827	Sum of GTIs [s]
l2events	106505	Number of level 2 events



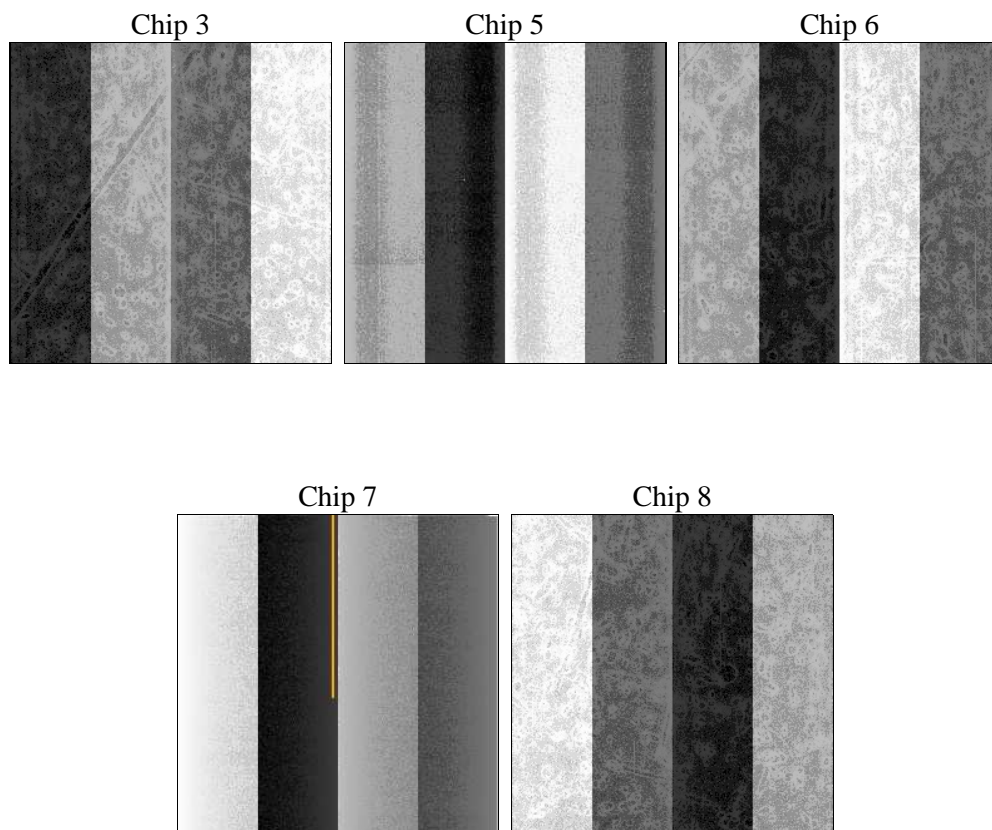
2 OBI

2.1 OBI

2.1.1 Images



2.1.2 Bias



2.1.3 Parameters

obi_num	0	Obi number	sched_exp_time	7274.949000	[s] Scheduled observation exposure time
ascdsver	8.4.5	Processing system revision	ontime	7349.7313536406	Sum of GTIs [s]
caldsver	4.5.1.1	 	ontime3	7377.9999858141	Sum of GTIs [s]
date	2012-09-16T23:10:48	Date and time of file creation	ontime5	7377.9999858141	Sum of GTIs [s]
revision	3	Processing version of data	ontime6	7374.8590255678	Sum of GTIs [s]
			ontime7	7349.7313536406	Sum of GTIs [s]
			ontime8	7374.8590255827	Sum of GTIs [s]
			l1events	280201	Number of level 1 events

2.1.4 Events

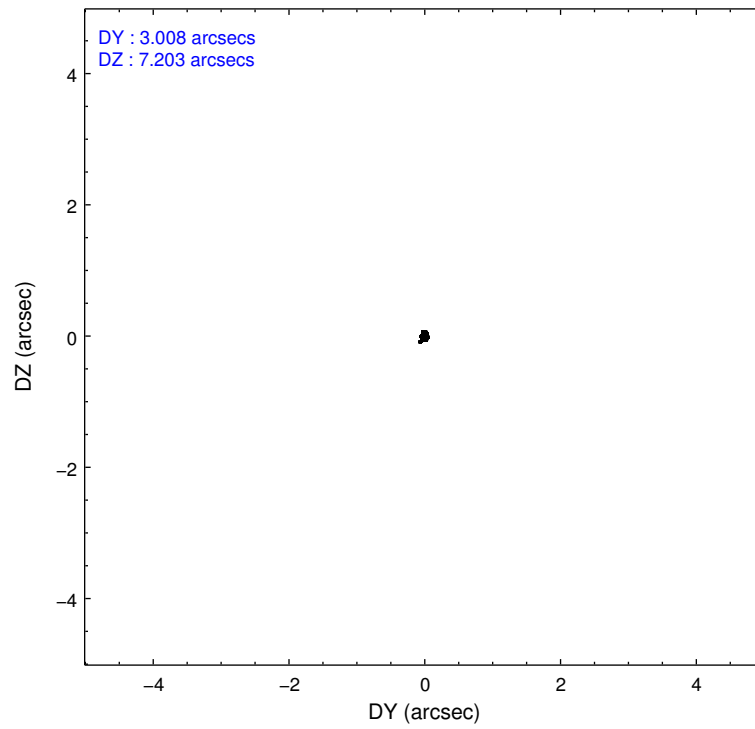
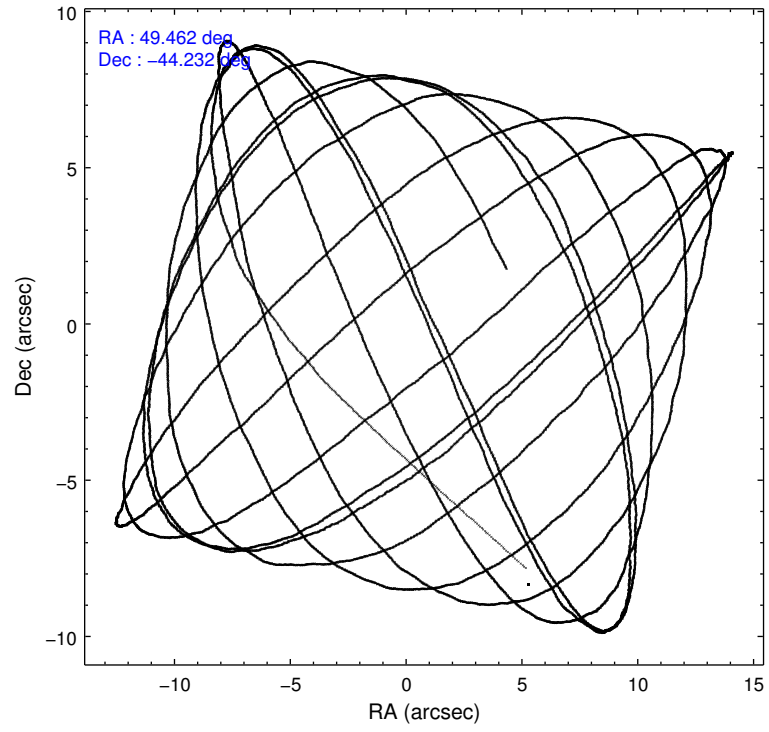
	ccd 3	ccd 5	ccd 6	ccd 7	ccd 8
level 1 events	42248	53491	41577	92862	50023
rejected events	38281	25481	35991	22840	38611
rejected %	90%	47%	86%	24%	77%

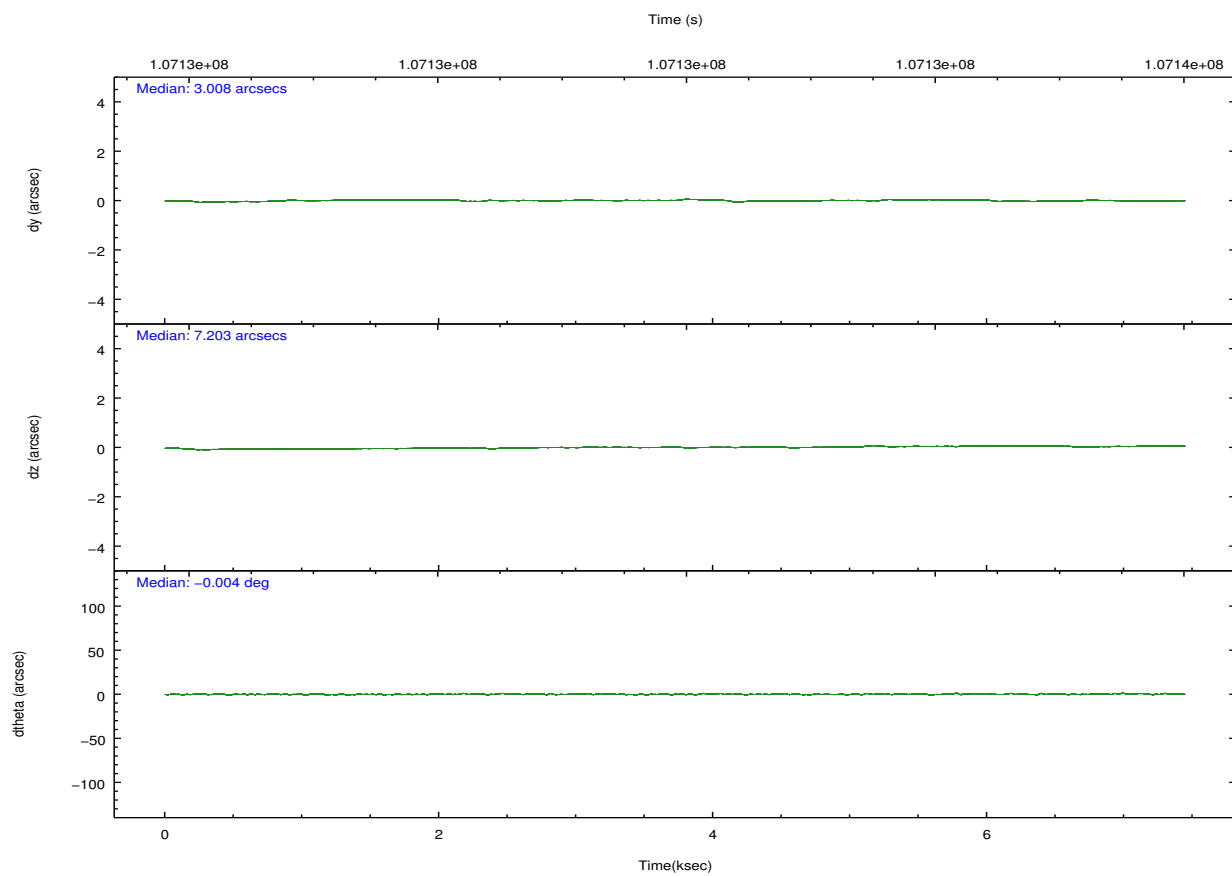
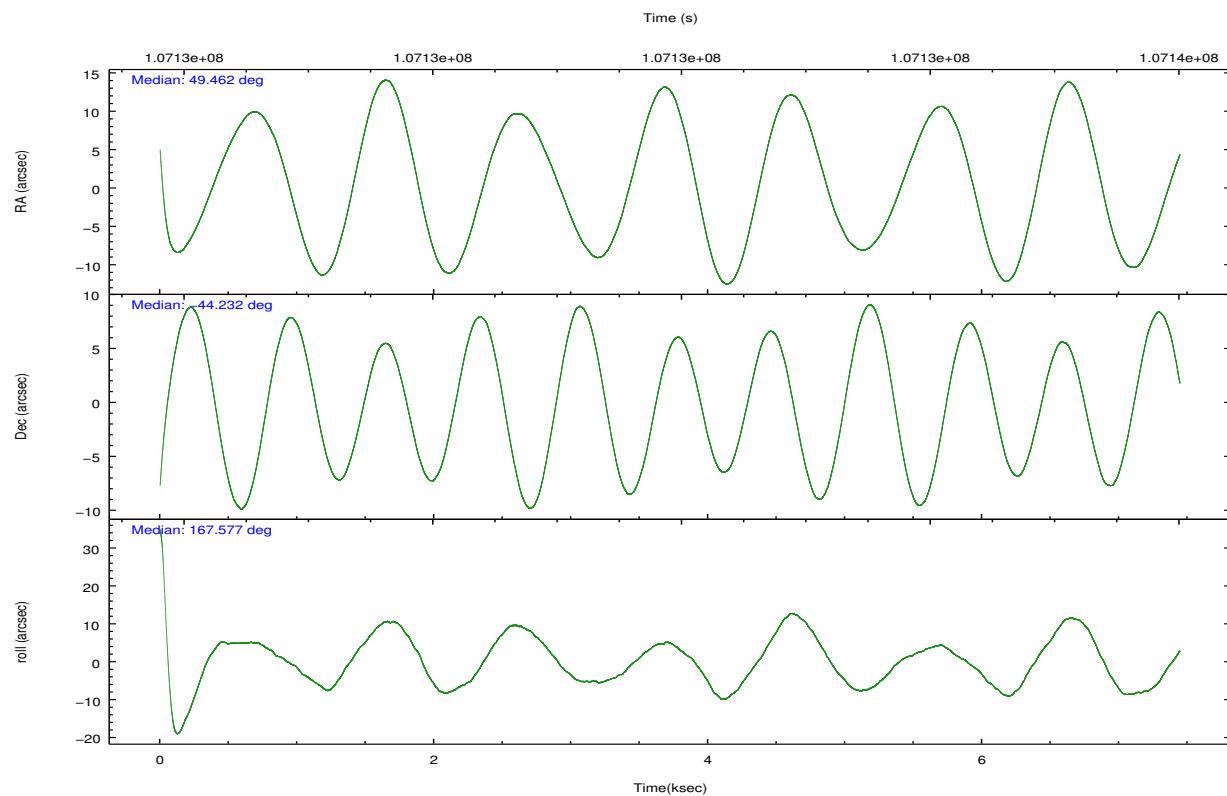
	ccd 3	ccd 5	ccd 6	ccd 7	ccd 8
grade 0 events	1601	4570	2760	18955	3673
	3%	8%	6%	20%	7%
grade 1 events	19	130	21	69	15
	0%	0%	0%	0%	0%
grade 2 events	766	7458	946	16783	2480
	1%	13%	2%	18%	4%
grade 3 events	423	1441	477	7665	1296
	1%	2%	1%	8%	2%
grade 4 events	413	1410	553	7663	1151
	0%	2%	1%	8%	2%
grade 5 events	1371	4312	1450	4785	1973
	3%	8%	3%	5%	3%
grade 6 events	767	13157	856	19019	2813
	1%	24%	2%	20%	5%
grade 7 events	36888	21013	34514	17923	36622
	87%	39%	83%	19%	73%

2.2 Compared Parameters

Parameter	Planned	Actual	Parameter	Planned	Actual
Instrument	ACIS	ACIS	Obspar format version number	7	7
Detector	ACIS-35678	ACIS-35678	Obspar file type	PREDICTED	ACTUAL
Grating	NONE	NONE	Obspar update status	NONE	UPDATED
Data mode	VFAINT	VFAINT	Number of optional ACIS chips dropped	0	0
Observation mode	POINTING	POINTING	On-chip summing requested	N	N
[deg] Pointing RA	49.498803	49.46252980562601	Subarray requested	NONE	NONE
[deg] Pointing Dec	-44.223476	-44.23192498463539	Alternating exposures requested	N	N
[deg] Pointing Roll	167.454111	167.5855169298388	[s] Primary exposure time	0.000000	3.1
[mm] SIM focus pos	-0.684267	-0.6828225247311905			
[mm] SIM defocus	0	0.001444936568705701			
[mm] SIM translation stage pos	-190.132523	-190.1400660498719			
[mm] SIM translation stage offset	0	0.00754346686406393			
[s] Observation start time (MET)	107128358.184000	107127277.59422			
Observation start date	2001-05-24T21:51:34	2001-05-24T21:34:37			
[s] Observation end time (MET)	107135633.184000	107135947.55705			
Observation end date	2001-05-24T23:52:49	2001-05-24T23:59:07			
Read mode	TIMED	TIMED			

2.3 Aspect



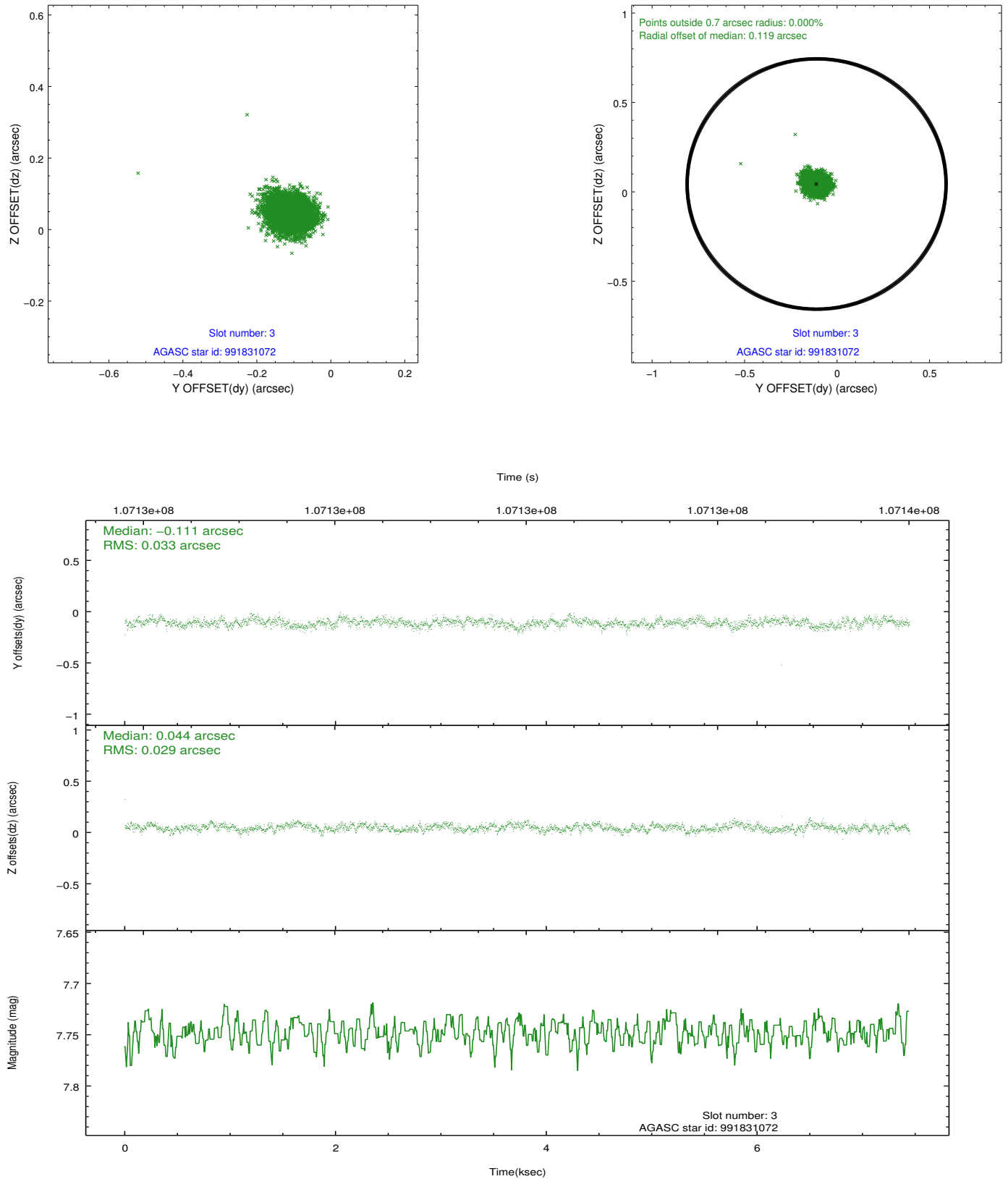


Slot Statistics

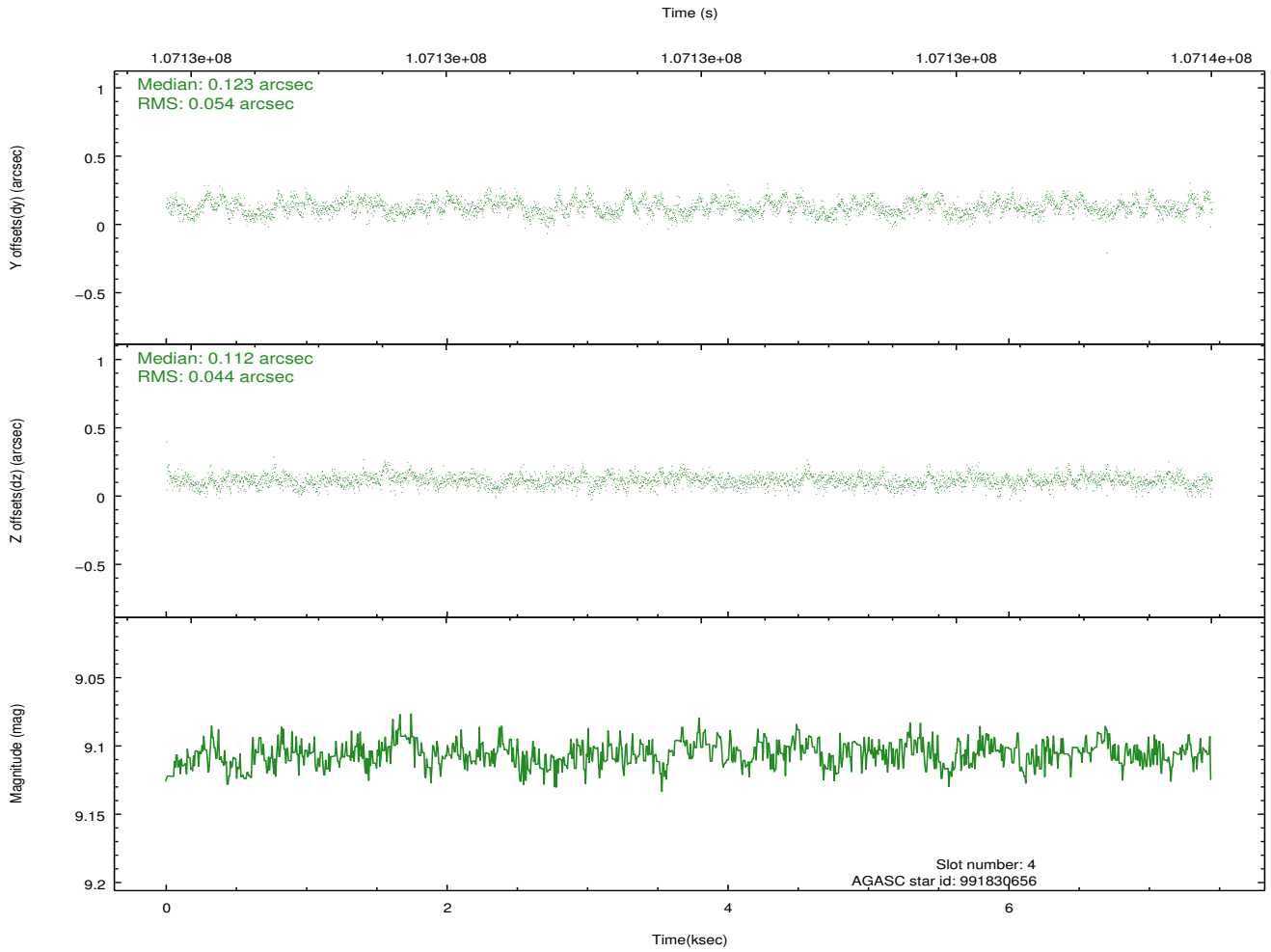
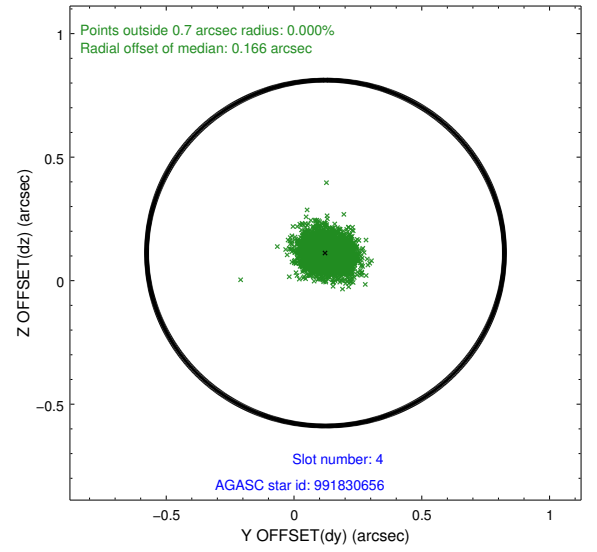
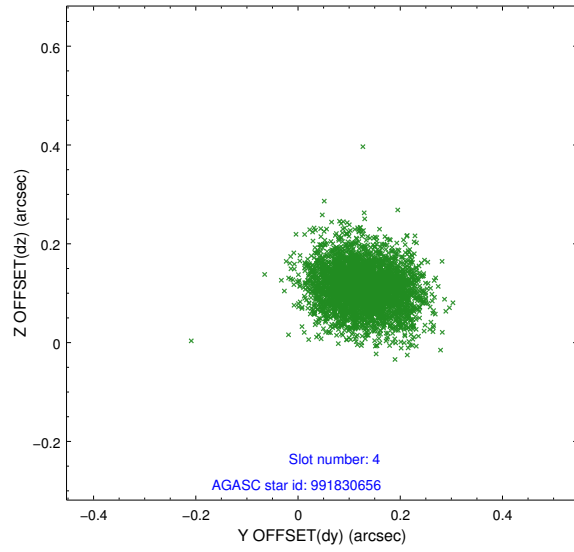
slot	status	id	mag	n_pts	med_dy	med_dz	dr1	dr2	ra	dec	mean_y	mean_z
0	FID	ACIS-S-2	7.11	1814	0.003	0.012	0.006	0.011	0.000000	0.000000	-755.65	-1728.36
1	FID	ACIS-S-4	7.19	1808	-0.066	-0.005	0.006	0.011	0.000000	0.000000	2157.22	179.31
2	FID	ACIS-S-5	7.24	1811	0.032	0.001	0.007	0.011	0.000000	0.000000	-1807.47	173.87
3	GUIDE	991831072	7.75	3626	-0.111	0.044	0.046	0.075	48.737752	-44.120462	1997.46	74.39
4	GUIDE	991830656	9.11	3631	0.123	0.112	0.075	0.119	49.908080	-44.245128	-1047.88	-150.67
5	GUIDE	991830952	9.39	3564	-0.039	-0.039	0.080	0.128	49.257291	-44.425398	446.63	845.40
6	GUIDE	991825280	10.14	3621	0.056	-0.132	0.130	0.208	49.472332	-44.701981	-308.90	1696.25
7	GUIDE	991828952	10.11	3629	-0.030	0.016	0.111	0.184	49.103151	-44.358377	887.01	698.22

2.4 Star Slots

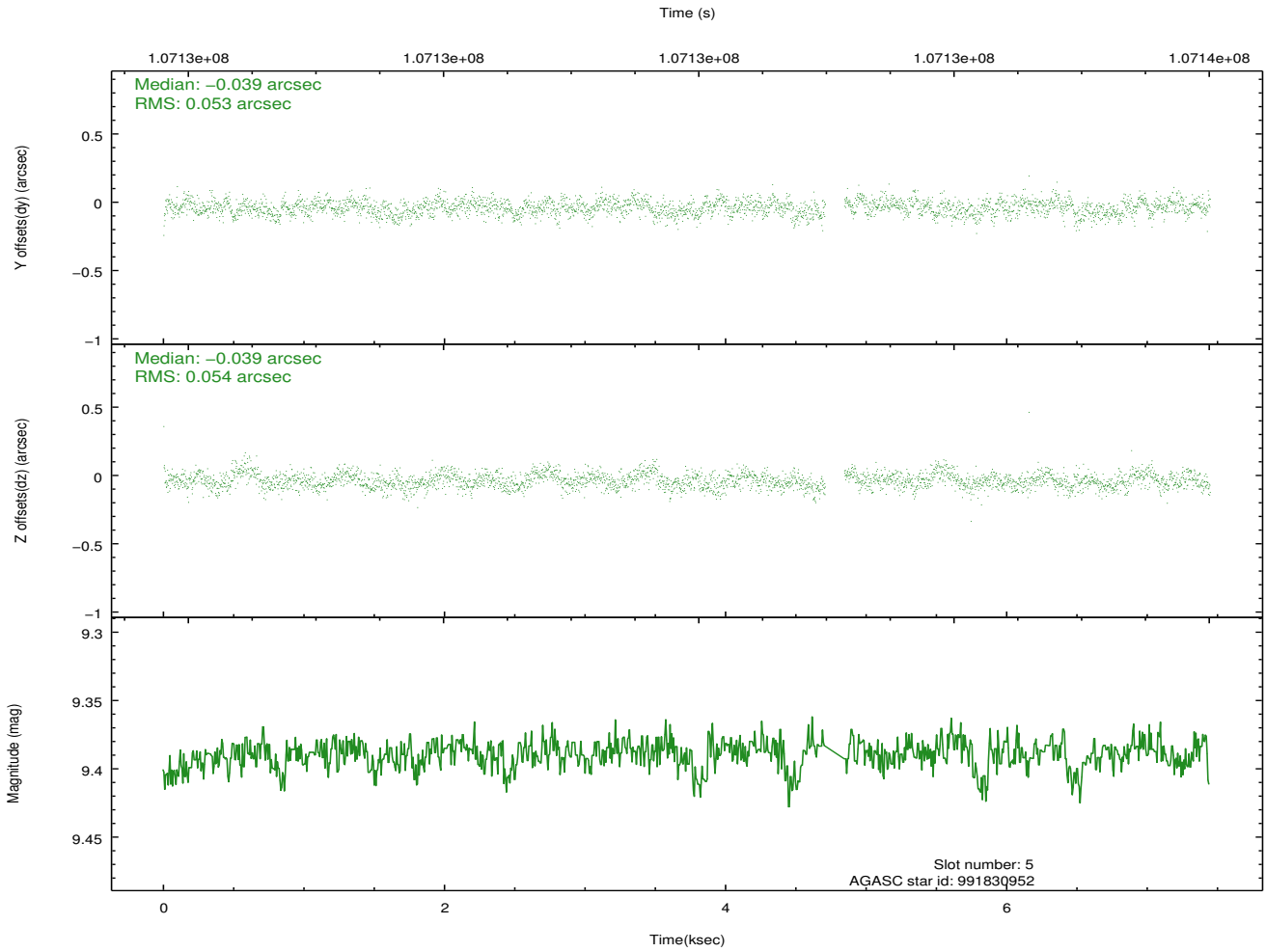
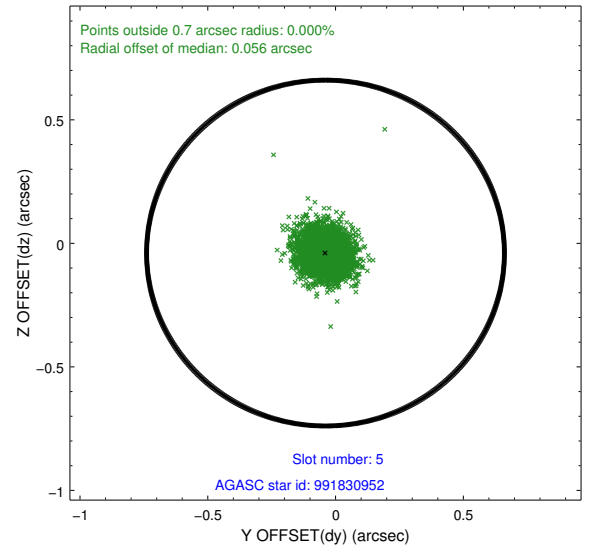
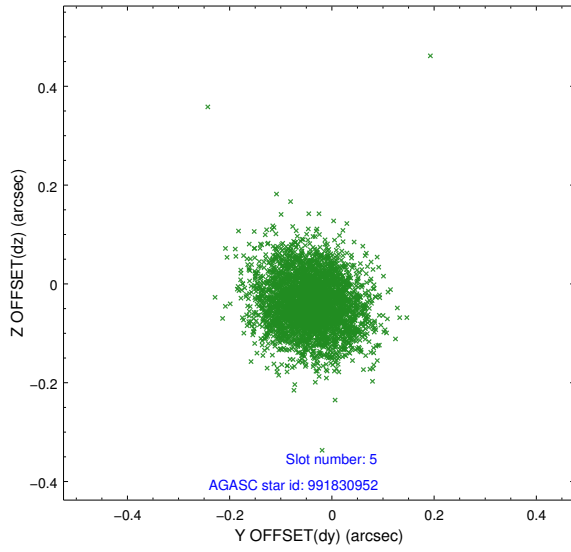
2.4.1 Slot 3



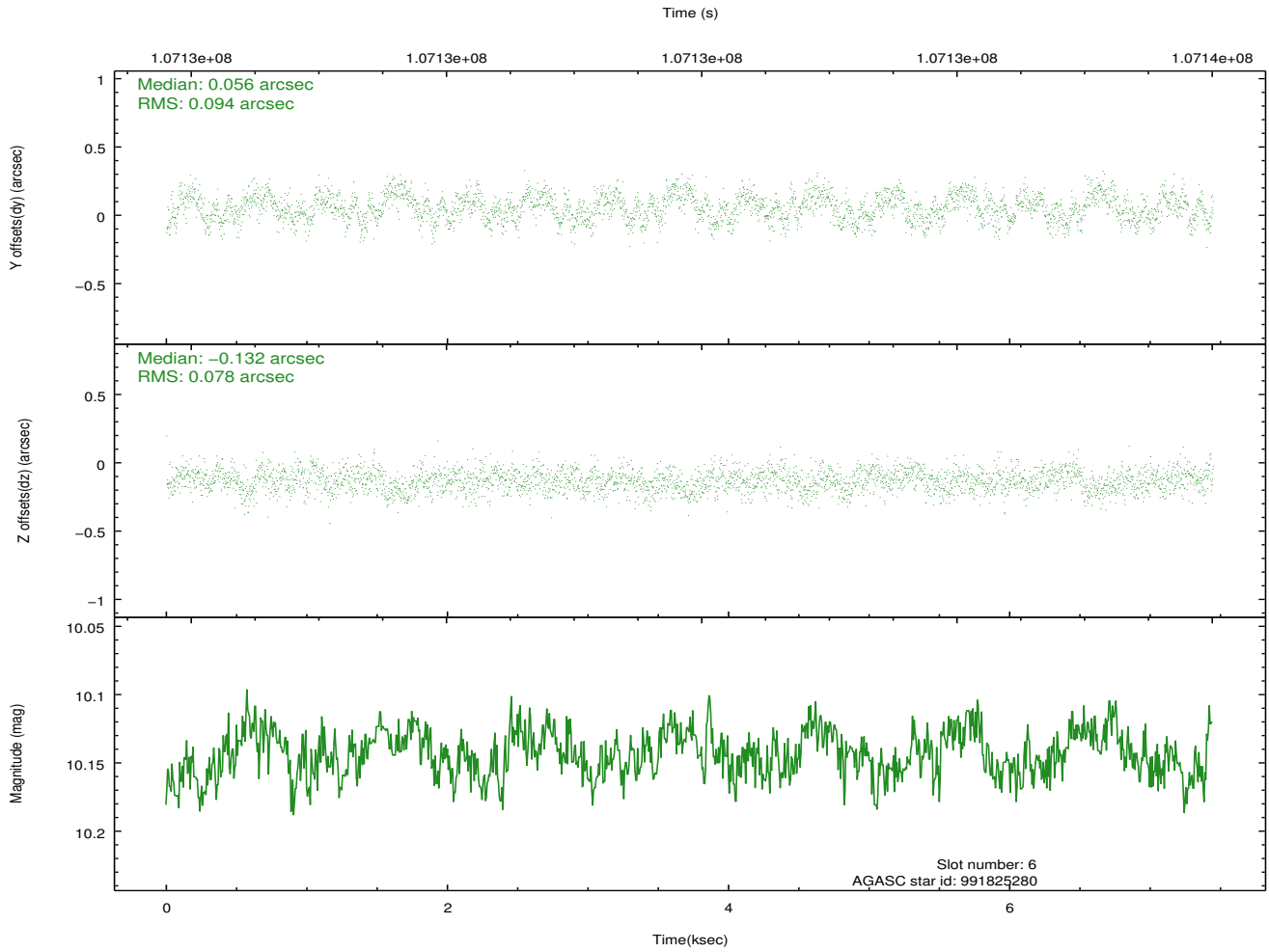
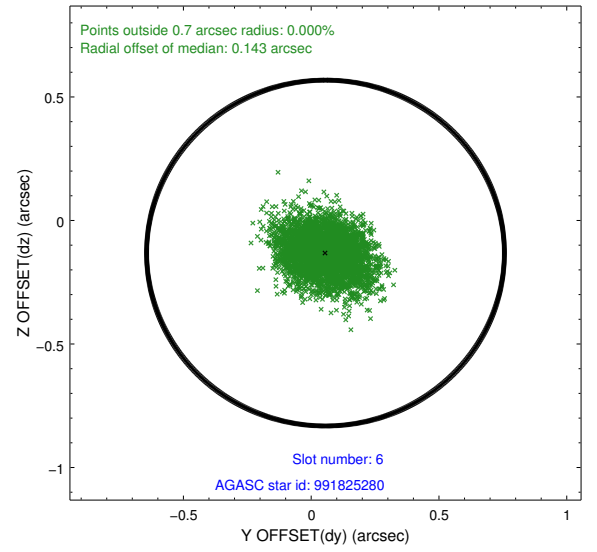
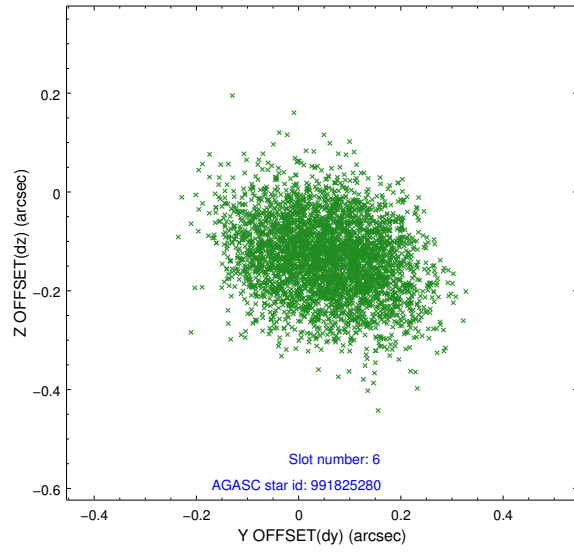
2.4.2 Slot 4



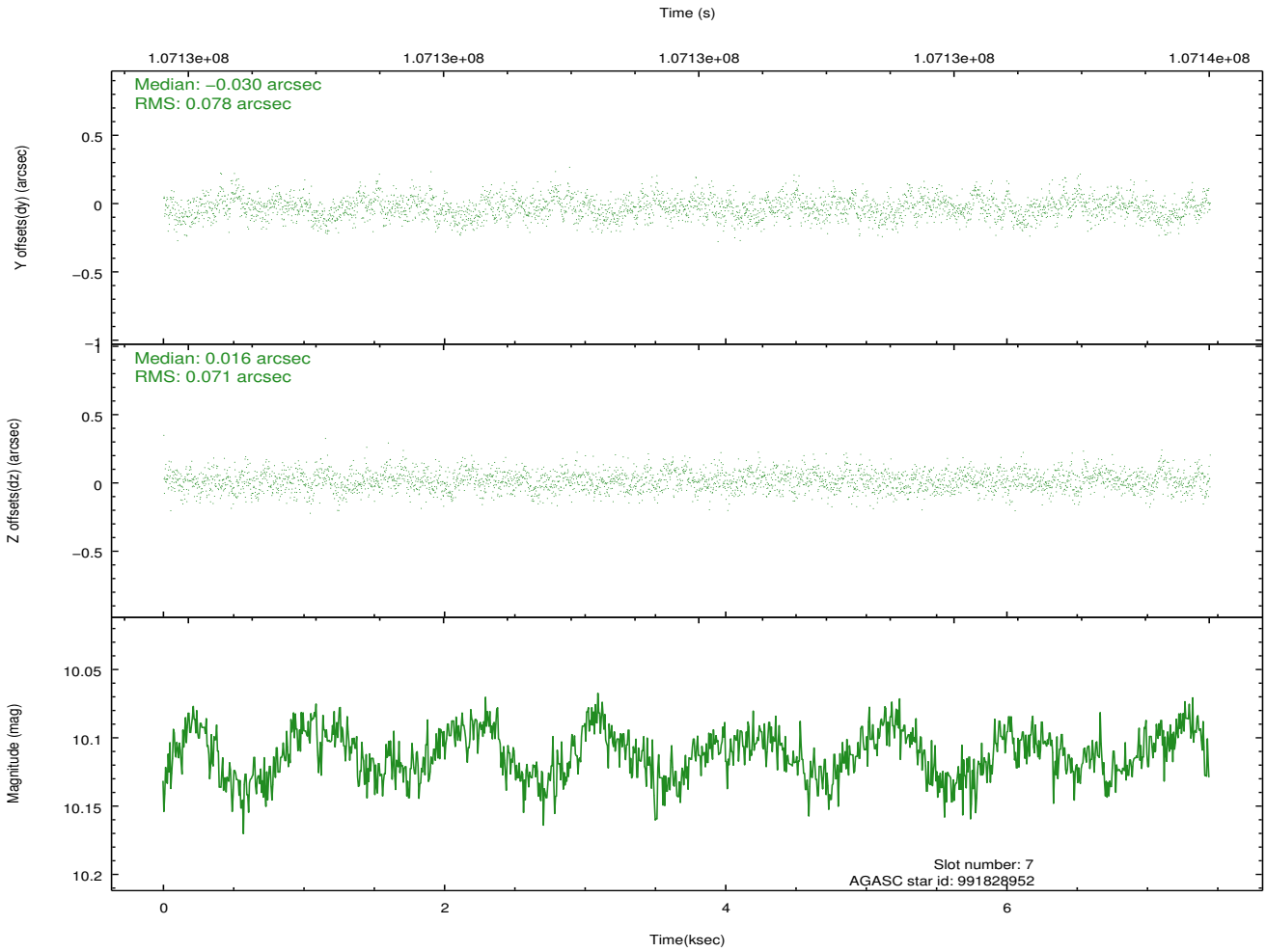
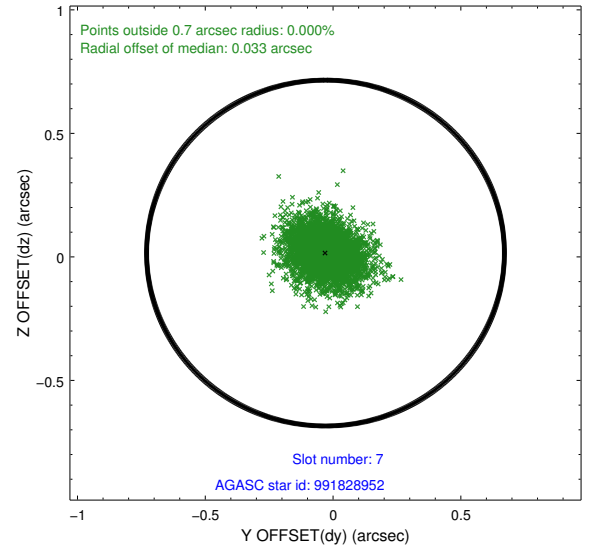
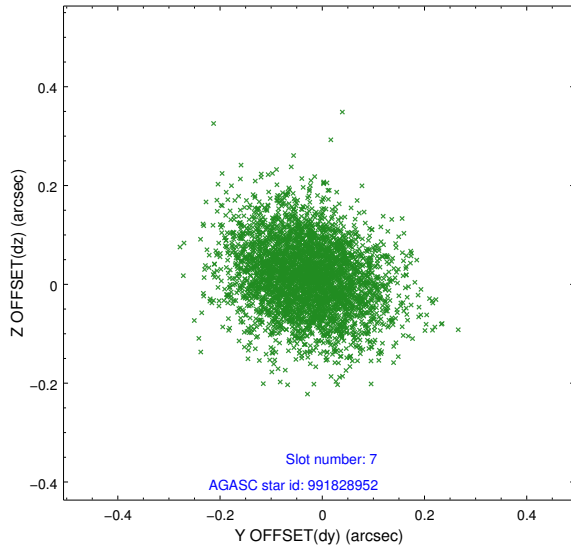
2.4.3 Slot 5



2.4.4 Slot 6

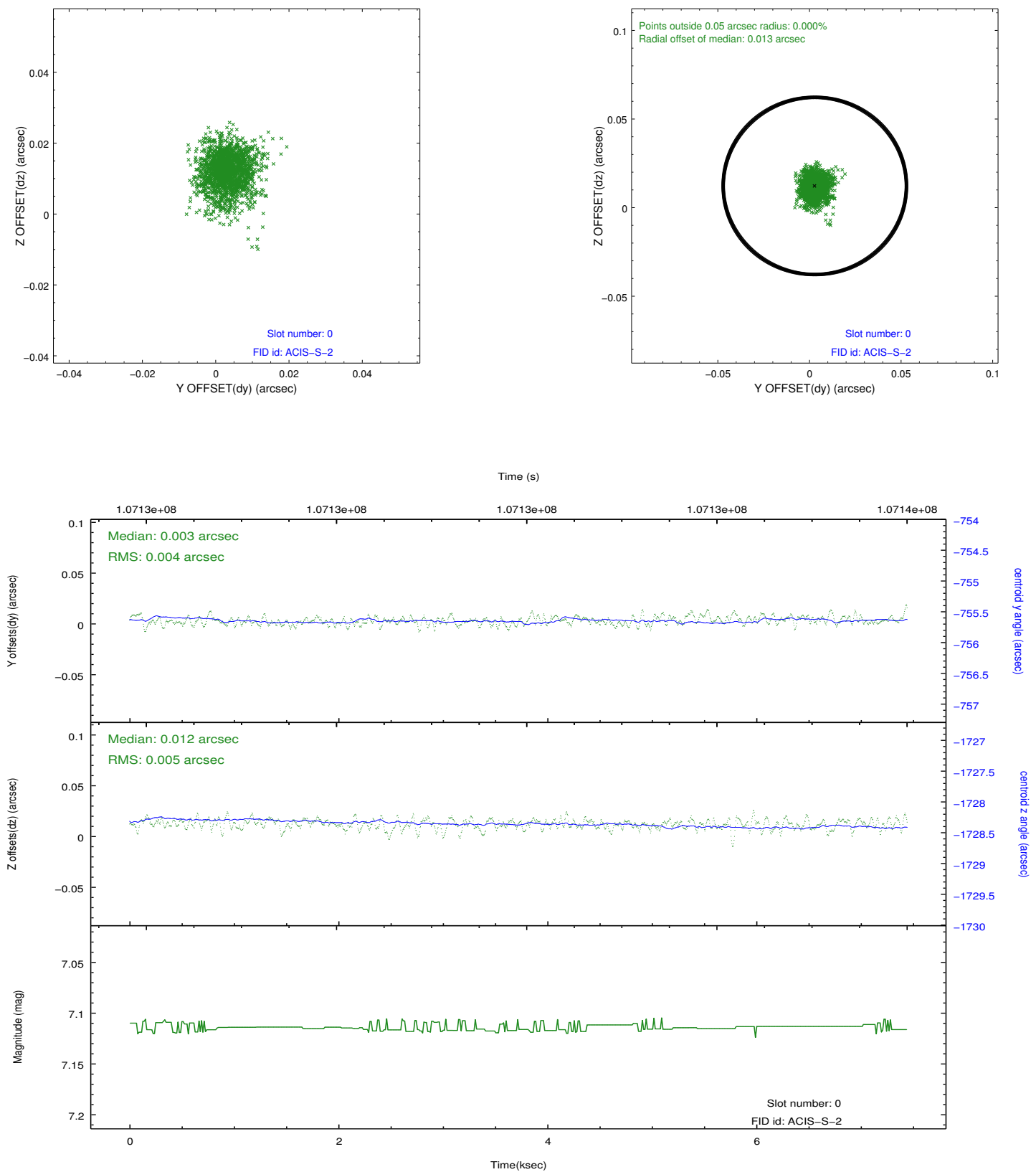


2.4.5 Slot 7

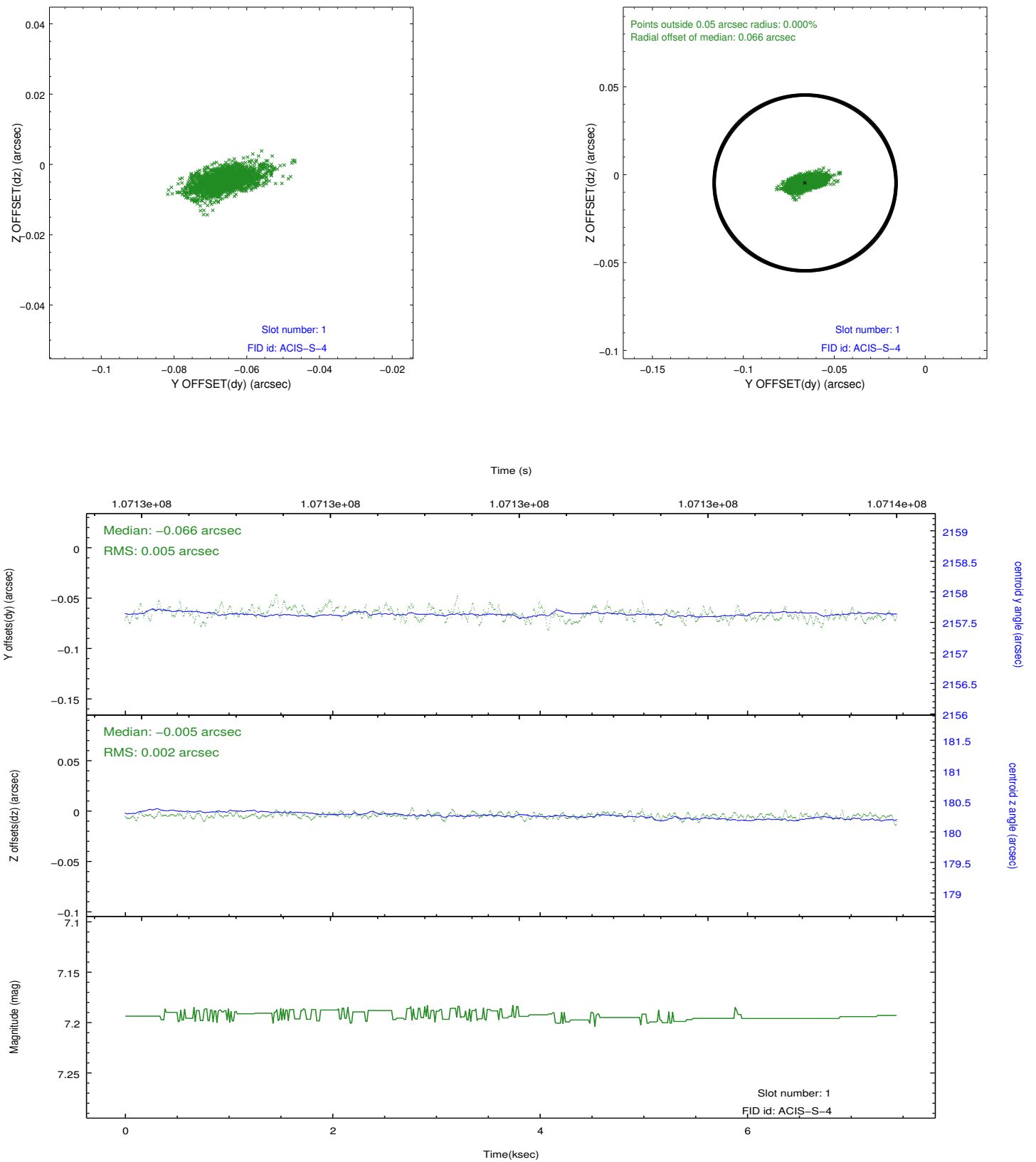


2.5 FID Slots

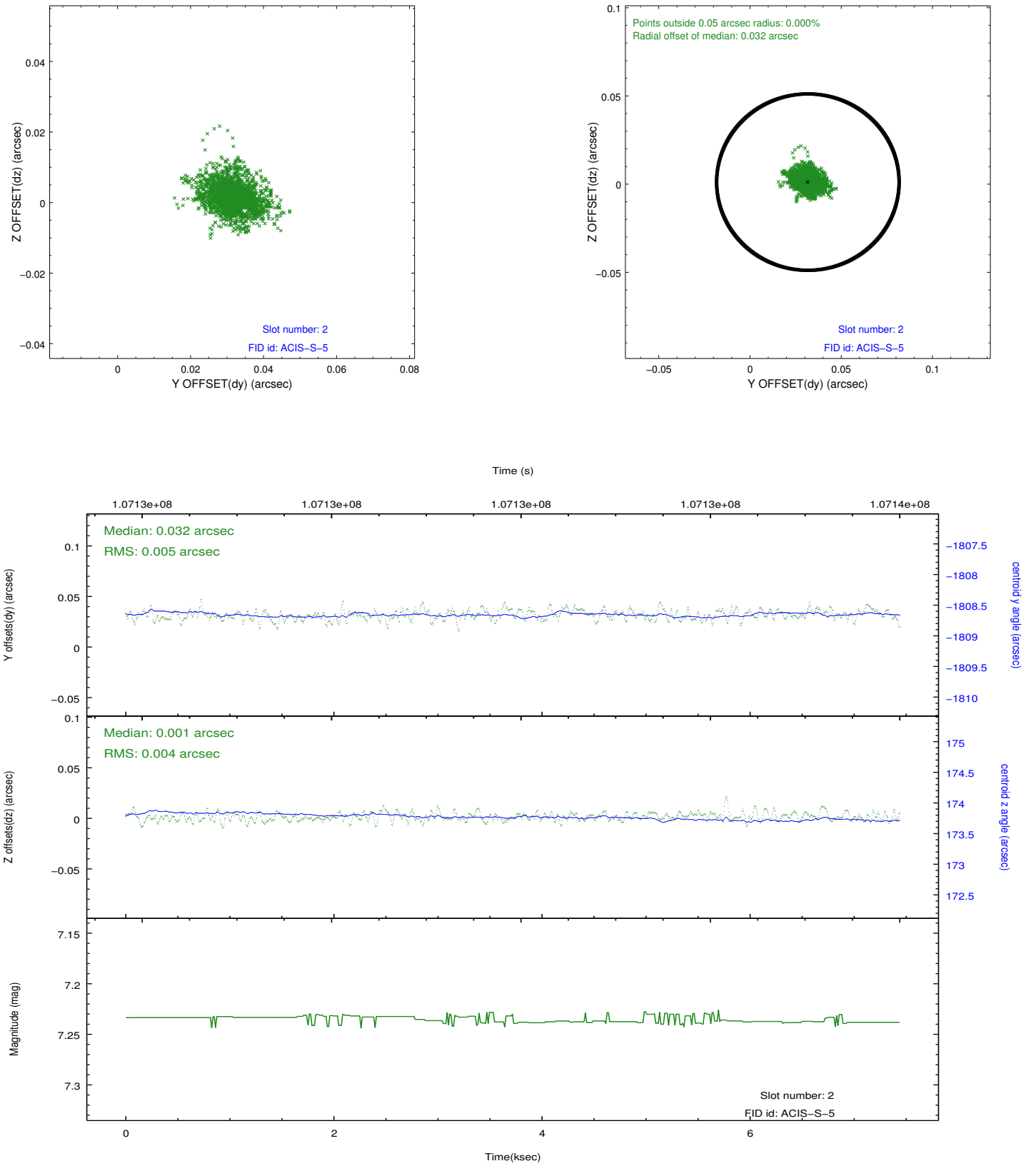
2.5.1 Slot 0



2.5.2 Slot 1



2.5.3 Slot 2



A Summary

A.1 Status

V&V Scientist	Jen Lauer
V&V Date (YYYY-MM-DD)	2012.09.19
V&V Edition	1
V&V Disposition and Status	OK
V&V Charge Time	7.353

A.2 Comments