

V&V Reference Report

L2 ASCDS Version : 8.4.5

Observation 2214 - L2 Version 3
Chandra X-Ray Center

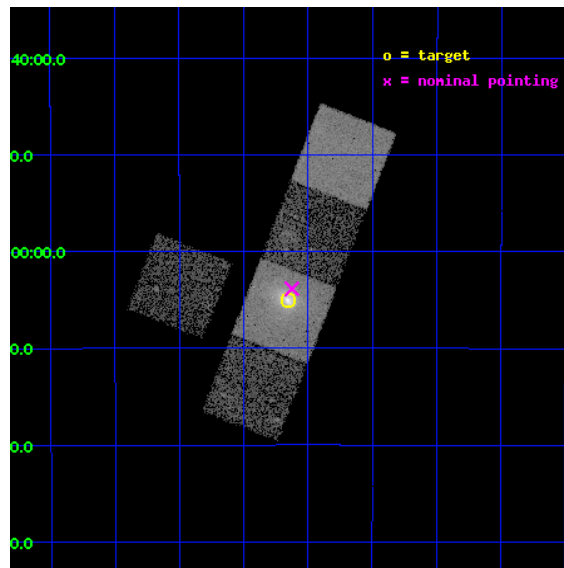
L2 Processing Date : Sep 20 2012

Contents

1	Front	2
2	OBI	3
2.1	OBI	3
2.1.1	Images	3
2.1.2	Bias	3
2.1.3	Parameters	4
2.1.4	Events	4
2.2	Compared Parameters	5
2.3	Aspect	6
2.4	Star Slots	9
2.4.1	Slot 3	9
2.4.2	Slot 4	10
2.4.3	Slot 5	11
2.4.4	Slot 6	12
2.4.5	Slot 7	13
2.5	FID Slots	14
2.5.1	Slot 0	14
2.5.2	Slot 1	15
2.5.3	Slot 2	16
A	Summary	17
A.1	Status	17
A.2	Comments	17

1 Front

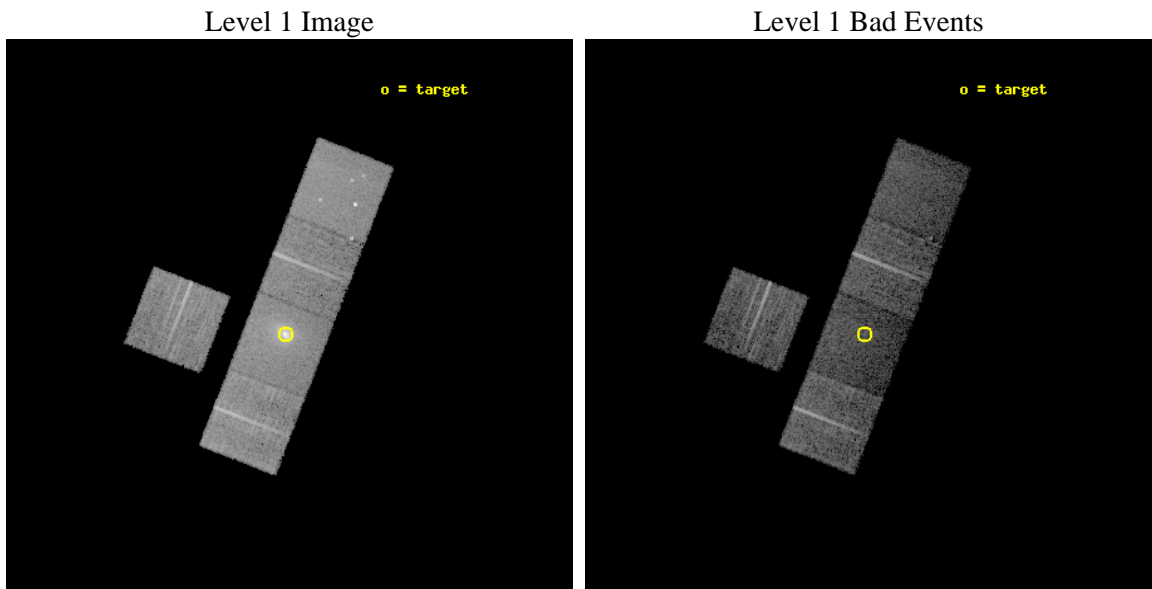
seq_num	800153	Sequence number
obs_id	2214	Observation id
title	CHANDRA AND HST OBSERVATIONS OF THE BRIGHTEST CLUSTER LENSES	Propo
observer	Prof. Steven Allen	Principal investigator
object	ABELL 2667	Source name
dtcycle	0	
cycle	P	events from which exps? Prim/Second/Both
ra_targ	357.912917	Observer's specified target RA [deg]
dec_targ	-26.084444	Observer's specified target Dec [deg]
ra_nom	357.90637903969	Nominal RA [deg]
dec_nom	-26.064467317552	Nominal Dec [deg]
roll_nom	111.24509195102	Nominal Roll [deg]
revision	3	Processing version of data
ontime	9773.1609049141	Sum of GTIs [s]
livetime	9645.4673627951	Livetime [s]
ontime3	9766.7558943629	Sum of GTIs [s]
ontime5	9773.1198948324	Sum of GTIs [s]
ontime6	9773.0788548291	Sum of GTIs [s]
ontime7	9773.1609049141	Sum of GTIs [s]
ontime8	9760.4326646626	Sum of GTIs [s]
l2events	95786	Number of level 2 events



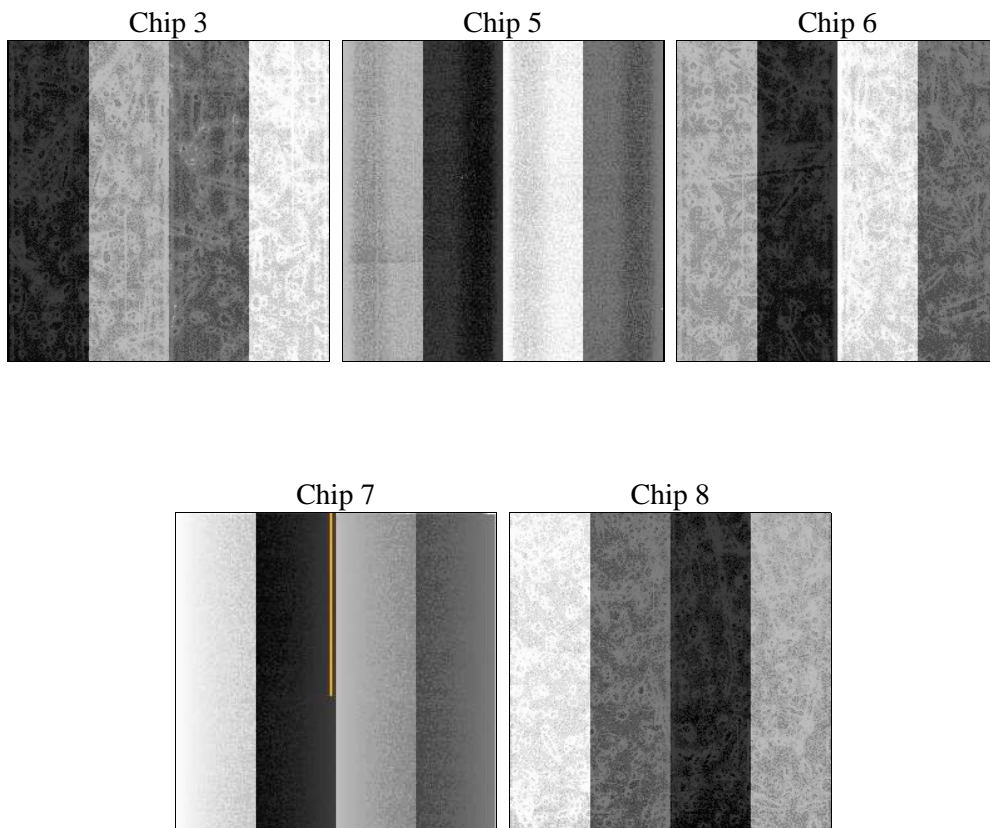
2 OBI

2.1 OBI

2.1.1 Images



2.1.2 Bias



2.1.3 Parameters

obi_num	0	Obi number	sched_exp_time	10000.000000	[s] Scheduled observation exposure time
ascdsver	8.4.5	Processing system revision	ontime	9773.1609049141	Sum of GTIs [s]
caldsver	4.5.1.1	 	ontime3	9766.7558943629	Sum of GTIs [s]
date	2012-09-20T03:44:50	Date and time of file creation	ontime5	9773.1198948324	Sum of GTIs [s]
revision	3	Processing version of data	ontime6	9773.0788548291	Sum of GTIs [s]
			ontime7	9773.1609049141	Sum of GTIs [s]
			ontime8	9760.4326646626	Sum of GTIs [s]
			l1events	332578	Number of level 1 events

2.1.4 Events

	ccd 3	ccd 5	ccd 6	ccd 7	ccd 8
level 1 events	56173	70022	55107	79876	71400
rejected events	51139	34160	48662	30559	56170
rejected %	91%	48%	88%	38%	78%

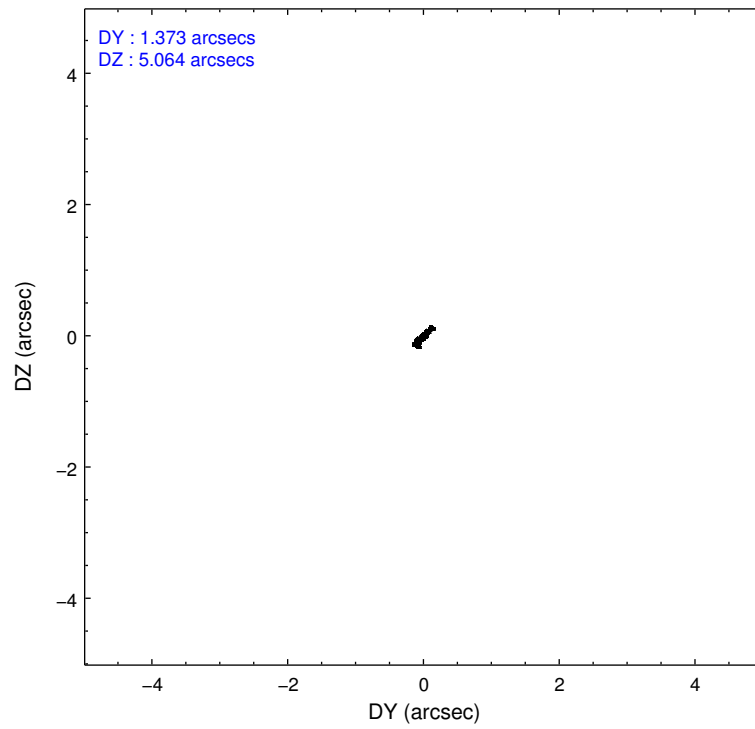
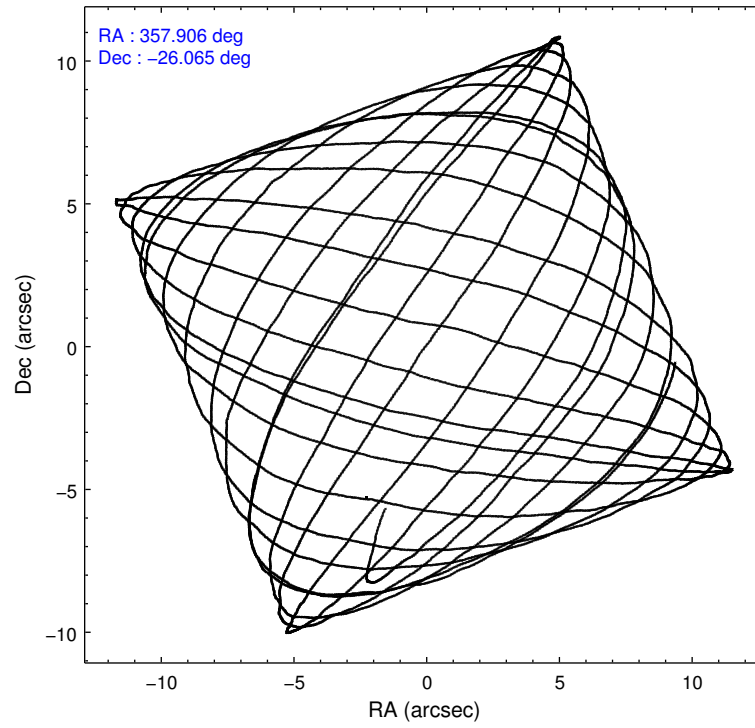
	ccd 3	ccd 5	ccd 6	ccd 7	ccd 8
grade 0 events	1840	5520	2772	10688	4655
	3%	7%	5%	13%	6%
grade 1 events	19	141	31	52	56
	0%	0%	0%	0%	0%
grade 2 events	1033	9480	1246	11338	3252
	1%	13%	2%	14%	4%
grade 3 events	614	1722	648	5197	1677
	1%	2%	1%	6%	2%
grade 4 events	535	1594	616	5192	1531
	0%	2%	1%	6%	2%
grade 5 events	1928	5773	2006	6057	2745
	3%	8%	3%	7%	3%
grade 6 events	1015	17567	1164	16925	4123
	1%	25%	2%	21%	5%
grade 7 events	49189	28225	46624	24427	53361
	87%	40%	84%	30%	74%

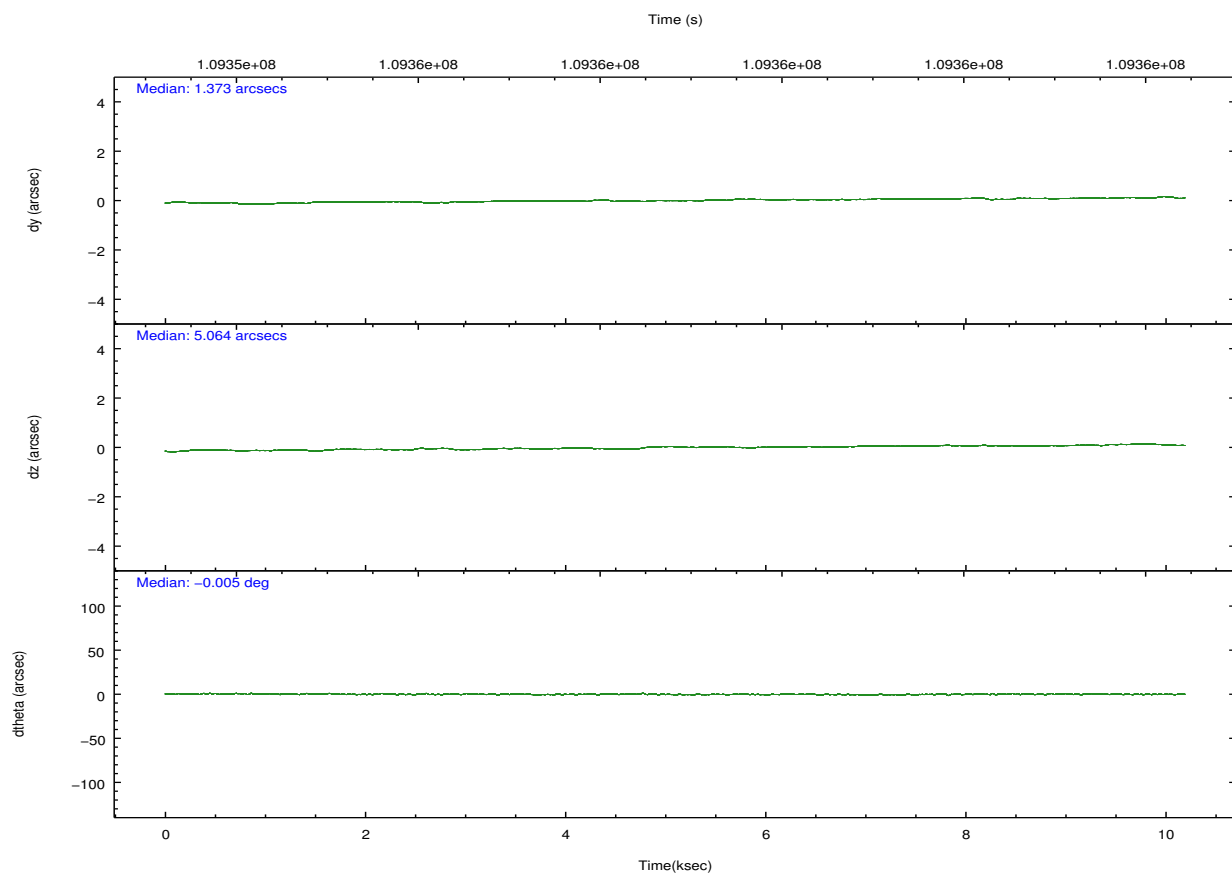
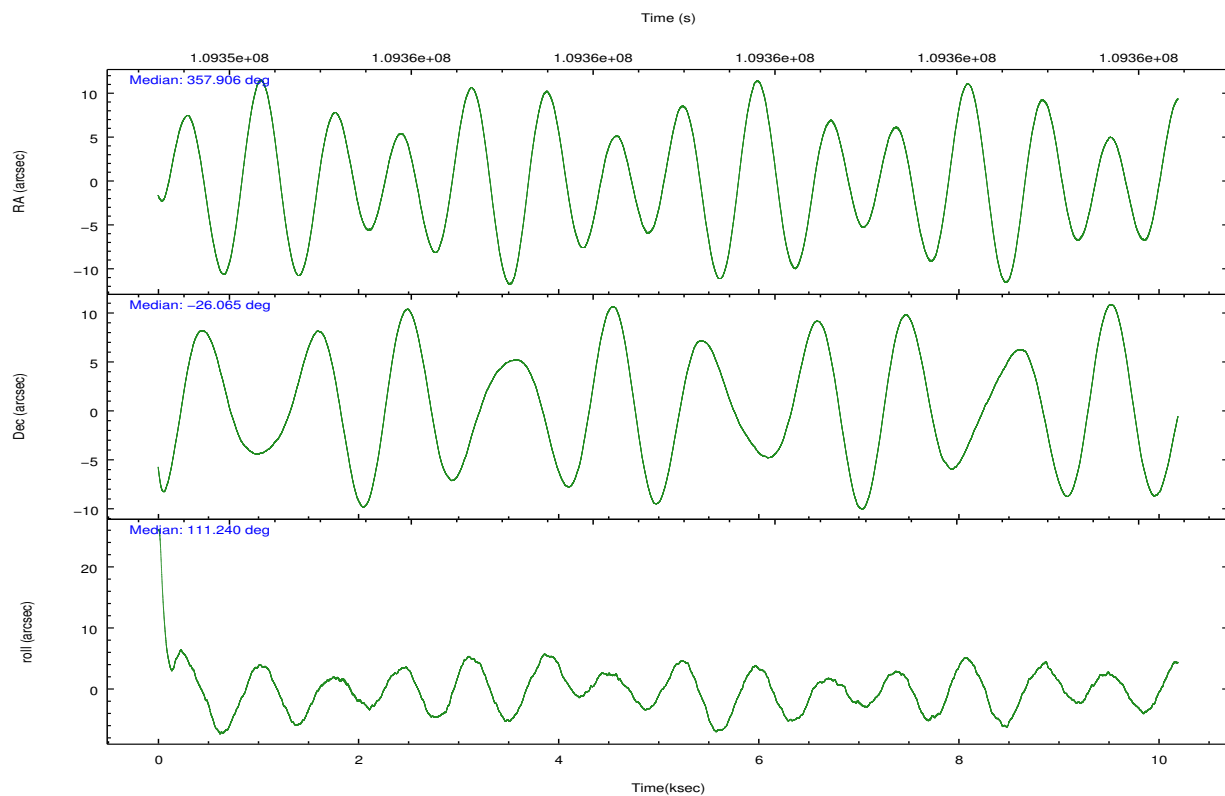
2.2 Compared Parameters

Parameter	Planned	Actual
Instrument	ACIS	ACIS
Detector	ACIS-35678	ACIS-35678
Grating	NONE	NONE
Data mode	VFAINT	VFAINT
Observation mode	POINTING	POINTING
[deg] Pointing RA	357.930252	357.9063790396852
[deg] Pointing Dec	-26.081293	-26.06446731755199
[deg] Pointing Roll	111.098934	111.2450919510241
[mm] SIM focus pos	-0.684267	-0.6828225247311905
[mm] SIM defocus	0	0.001444936568705701
[mm] SIM translation stage pos	-190.132523	-190.1425803651734
[mm] SIM translation stage offset	0	0.01005778216563158
[s] Observation start time (MET)	109353916.184000	109353336.29345
Observation start date	2001-06-19T16:04:12	2001-06-19T15:55:36
[s] Observation end time (MET)	109363916.184000	109364589.76889
Observation end date	2001-06-19T18:50:52	2001-06-19T19:03:09
Read mode	TIMED	TIMED

Parameter	Planned	Actual
Obspar format version number	7	7
Obspar file type	PREDICTED	ACTUAL
Obspar update status	NONE	UPDATED
Number of optional ACIS chips dropped	0	0
On-chip summing requested	N	N
Subarray requested	NONE	NONE
Alternating exposures requested	N	N
[s] Primary exposure time	0.000000	3.1

2.3 Aspect



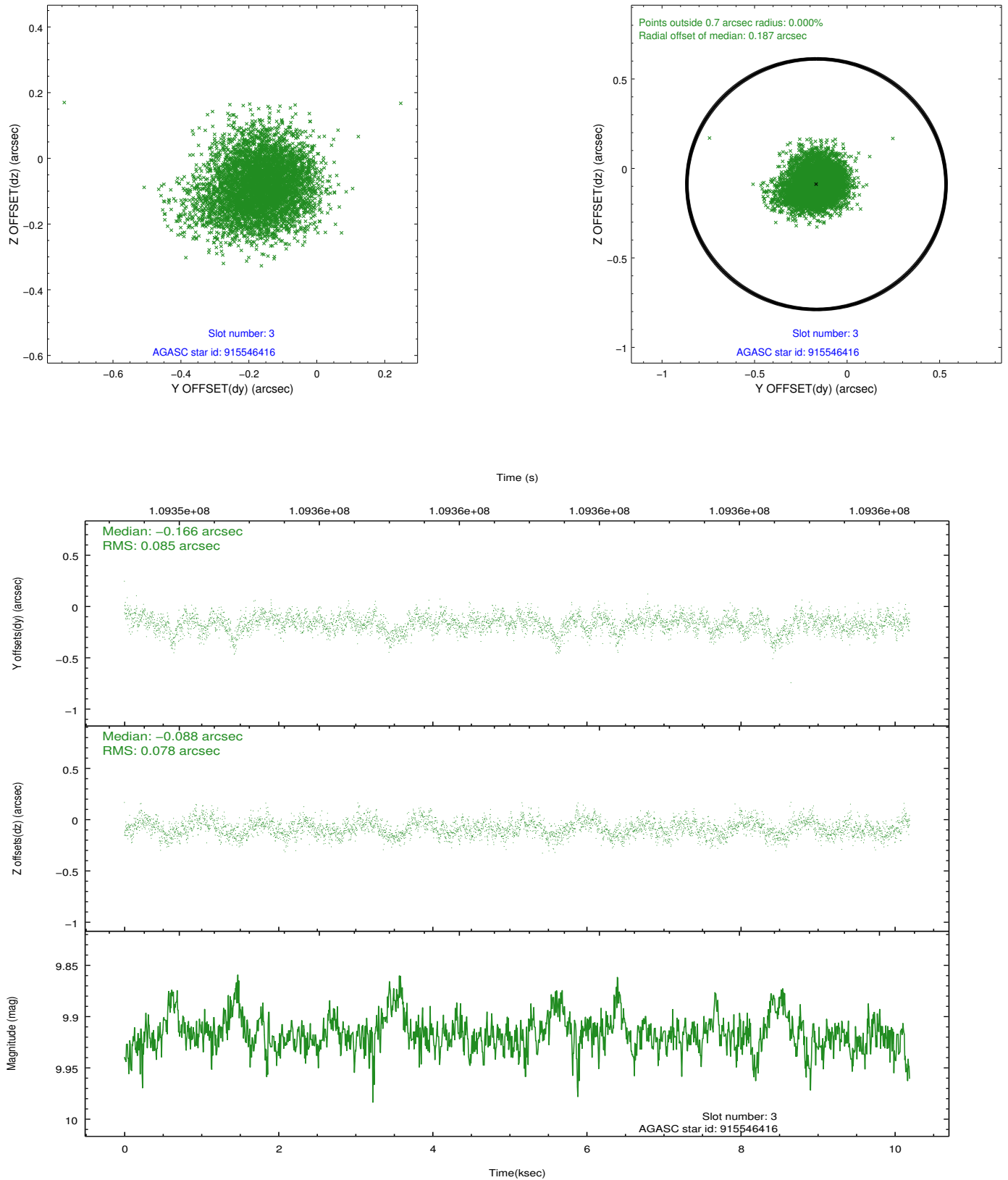


Slot Statistics

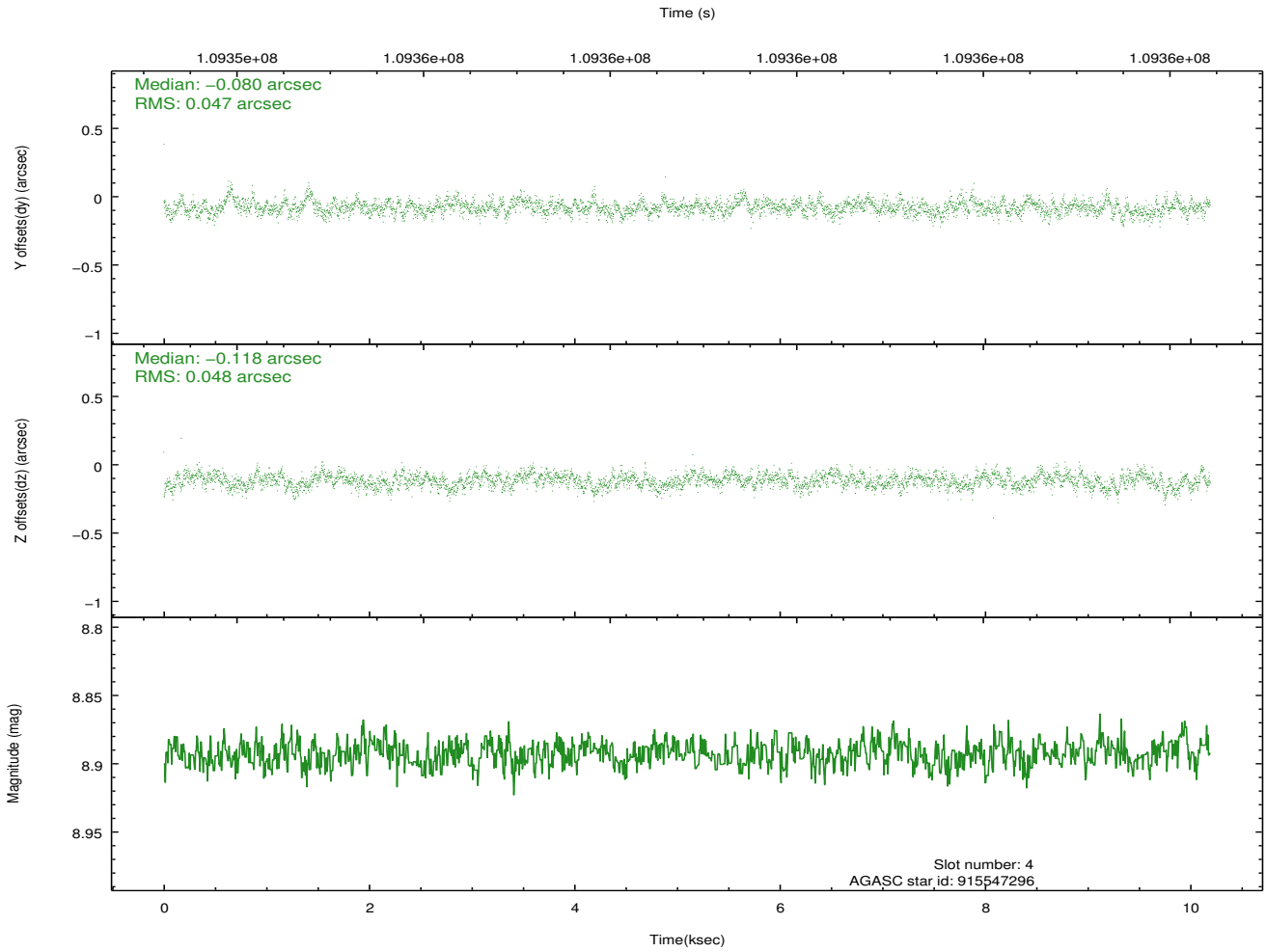
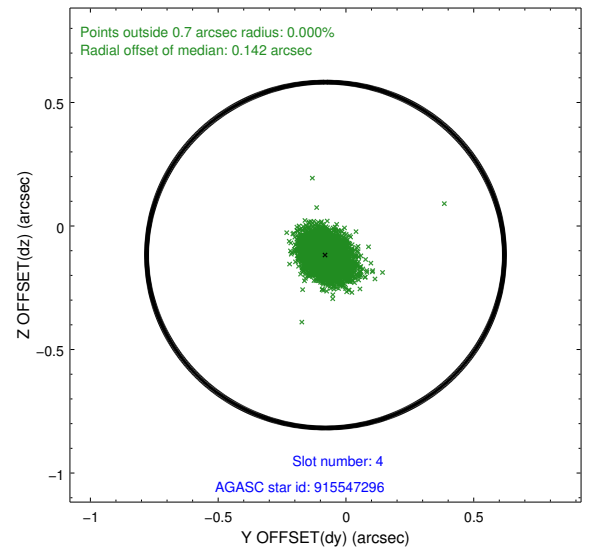
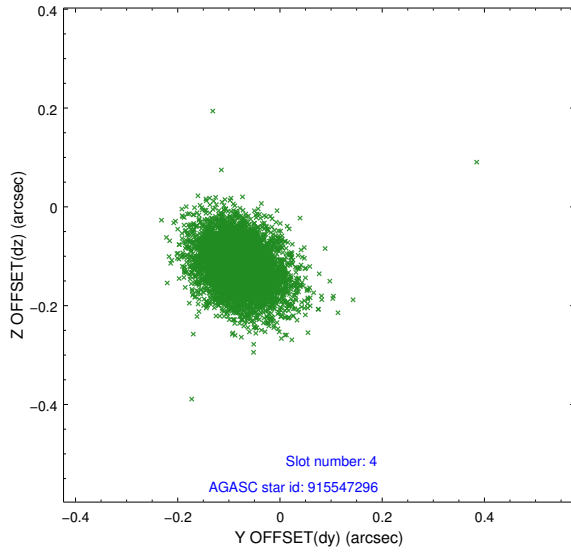
slot	status	id	mag	n_pts	med_dy	med_dz	dr1	dr2	ra	dec	mean_y	mean_z
0	FID	ACIS-S-2	7.11	2486	-0.046	-0.014	0.010	0.023	0.000000	0.000000	-753.98	-1726.14
1	FID	ACIS-S-4	7.20	2486	-0.005	0.026	0.010	0.035	0.000000	0.000000	2159.06	181.91
2	FID	ACIS-S-5	7.24	2486	0.022	-0.004	0.010	0.026	0.000000	0.000000	-1806.13	176.05
3	GUIDE	915546416	9.92	4965	-0.166	-0.088	0.121	0.199	357.544948	-25.638088	1936.97	593.28
4	GUIDE	915547296	8.89	4969	-0.080	-0.118	0.069	0.115	357.677475	-25.908473	874.79	540.26
5	GUIDE	915543976	9.40	4971	0.065	0.162	0.091	0.145	358.296290	-26.060420	-357.02	-1130.43
6	GUIDE	915541272	9.96	4972	-0.038	0.276	0.119	0.195	358.336379	-25.689400	840.28	-1735.91
7	GUIDE	915538200	9.77	4965	0.230	-0.239	0.141	0.224	357.458497	-26.842105	-2012.22	2400.19

2.4 Star Slots

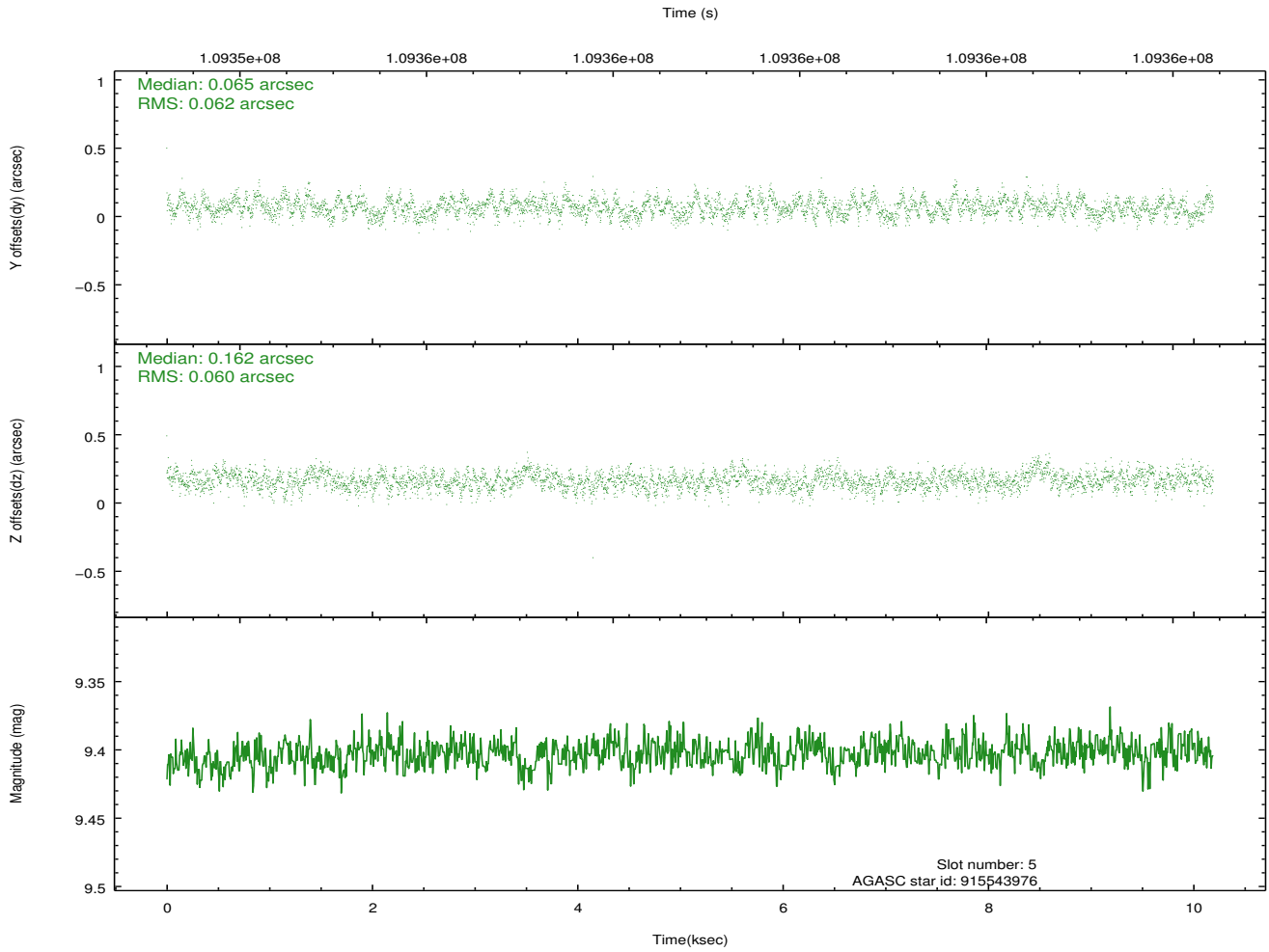
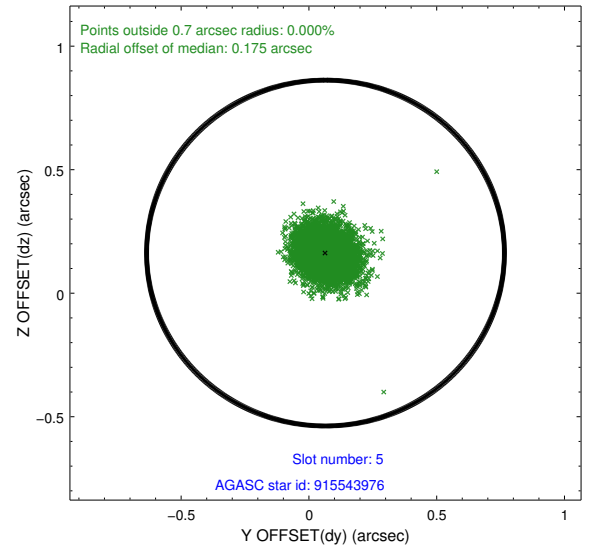
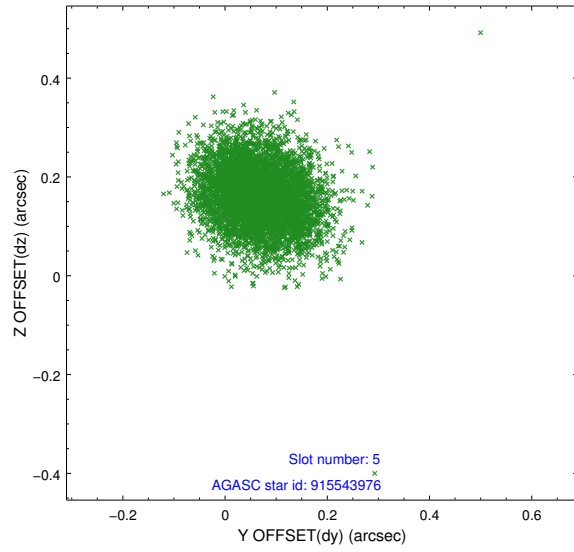
2.4.1 Slot 3



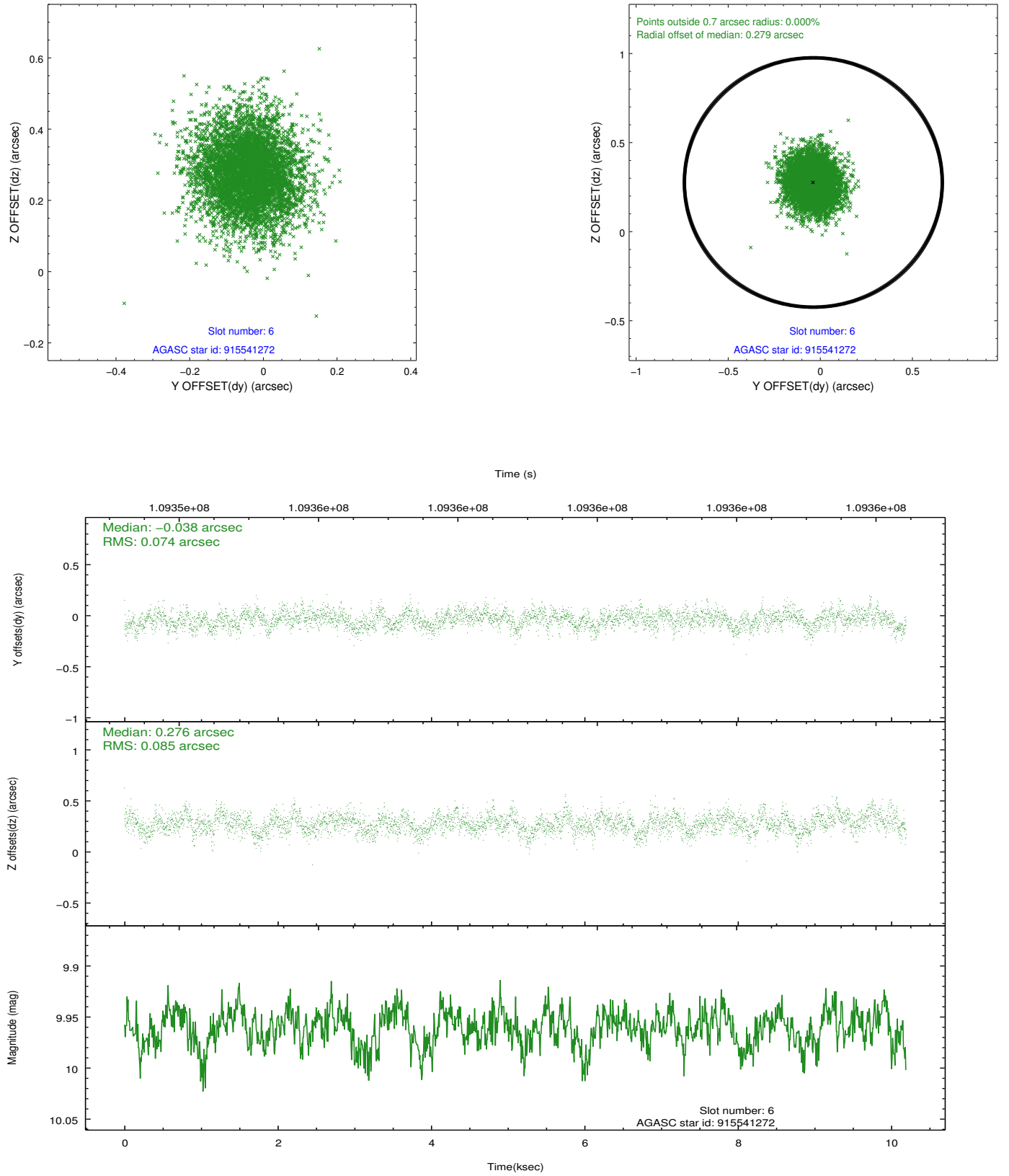
2.4.2 Slot 4



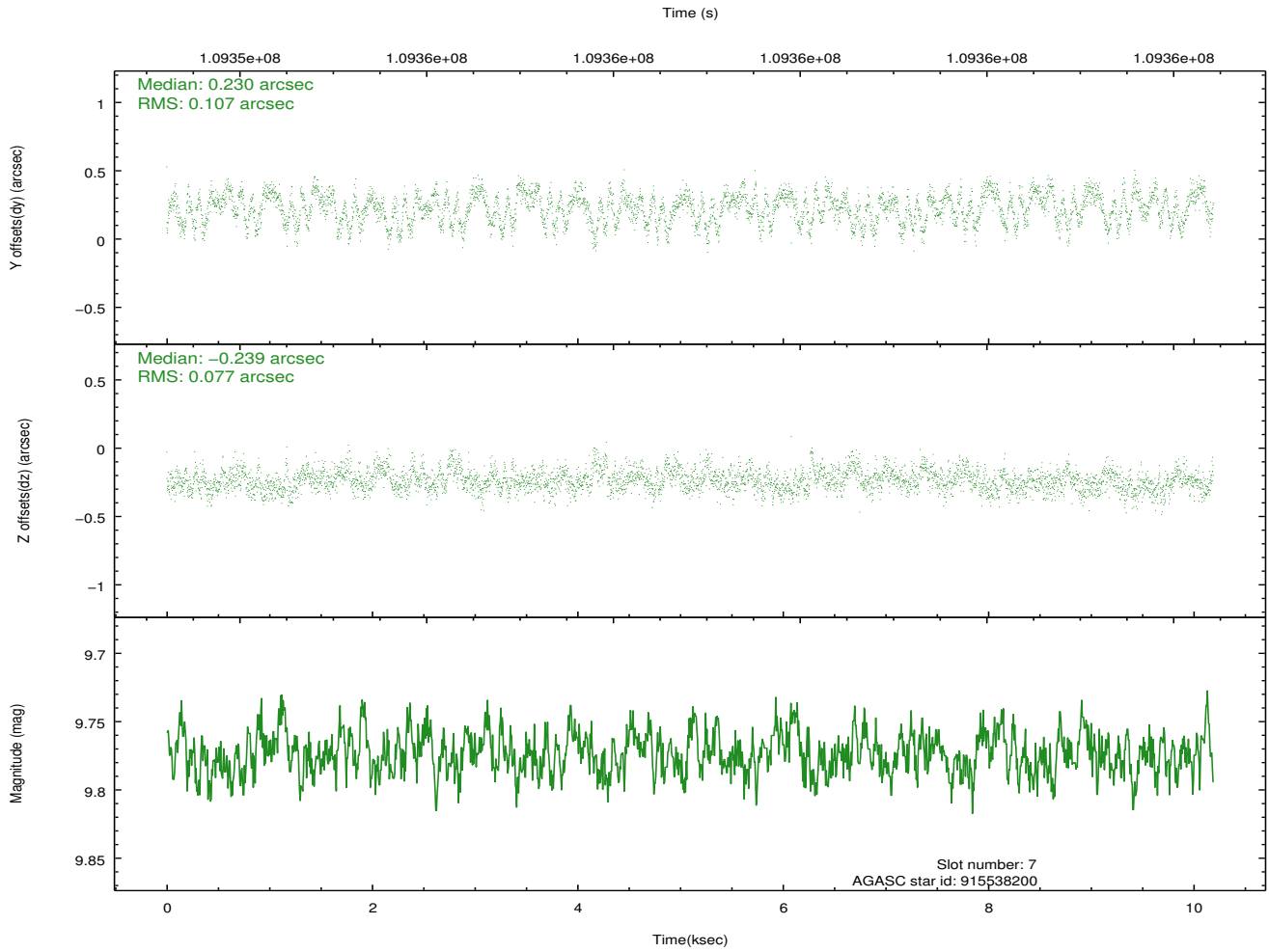
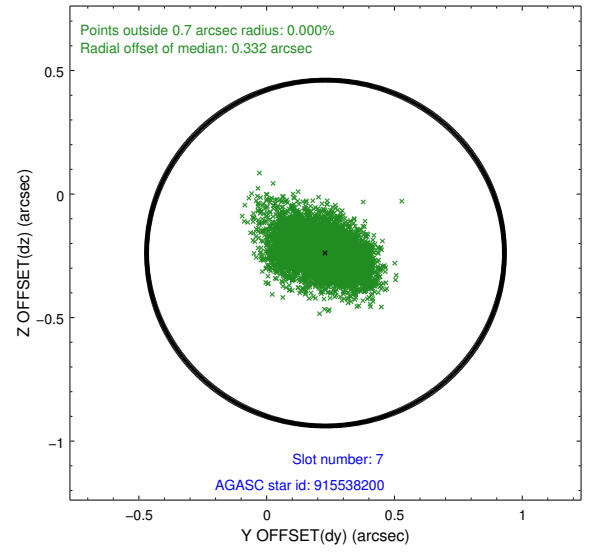
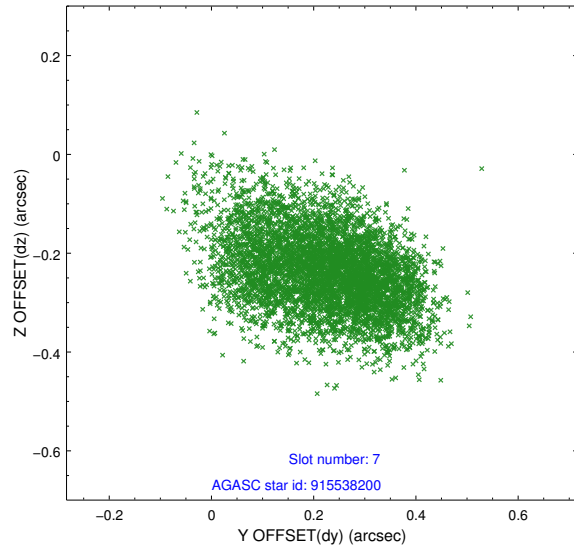
2.4.3 Slot 5



2.4.4 Slot 6

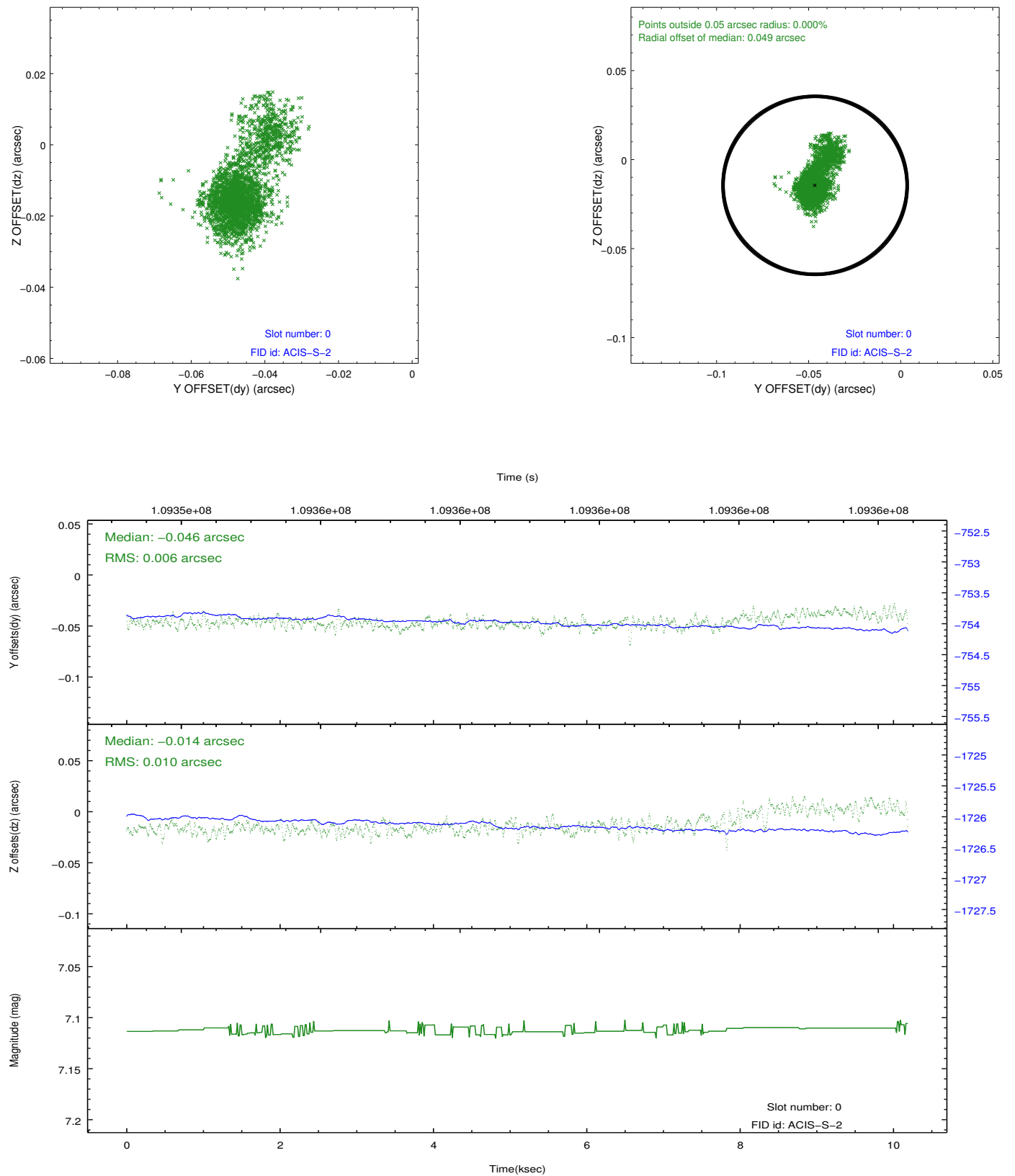


2.4.5 Slot 7

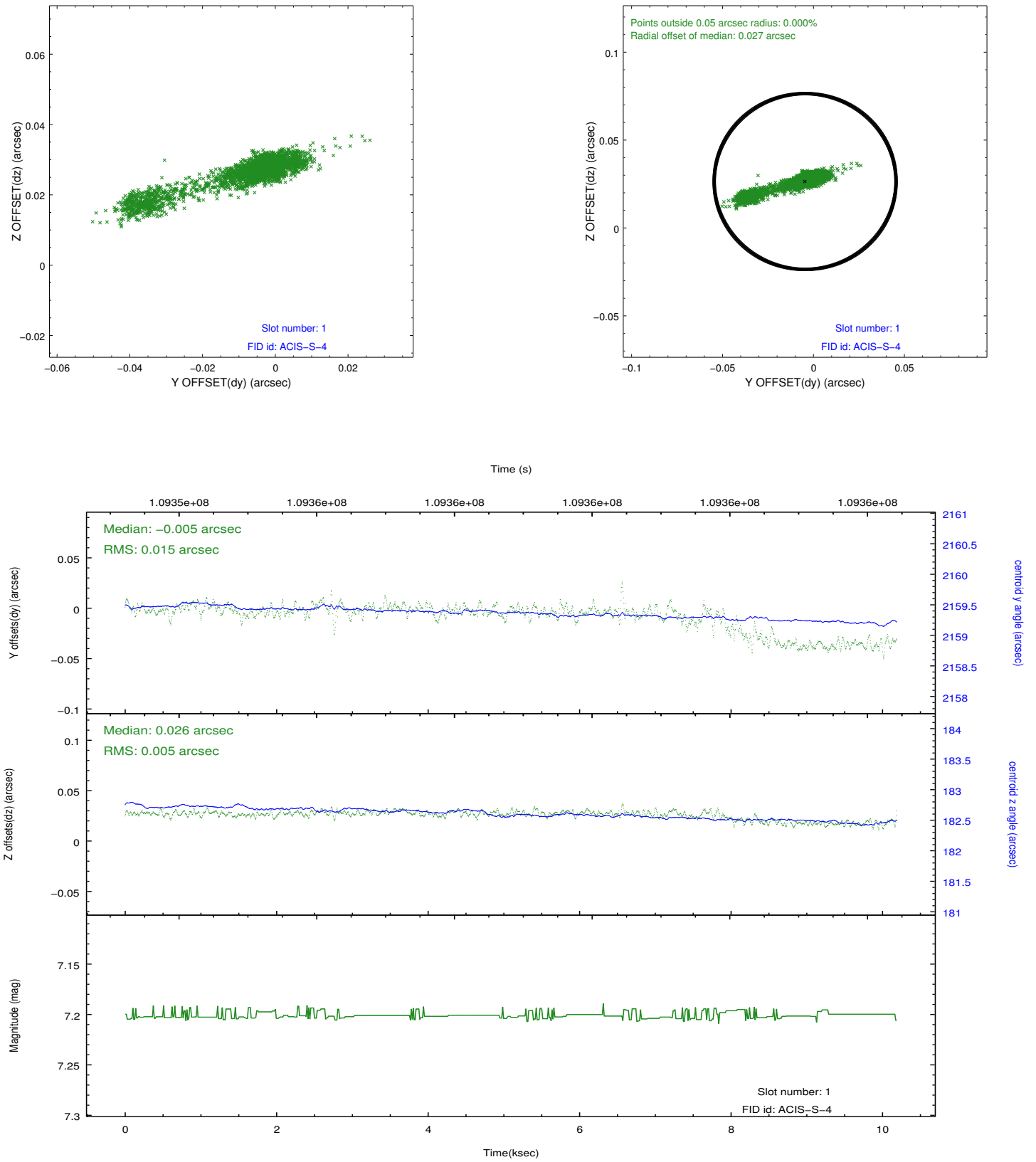


2.5 FID Slots

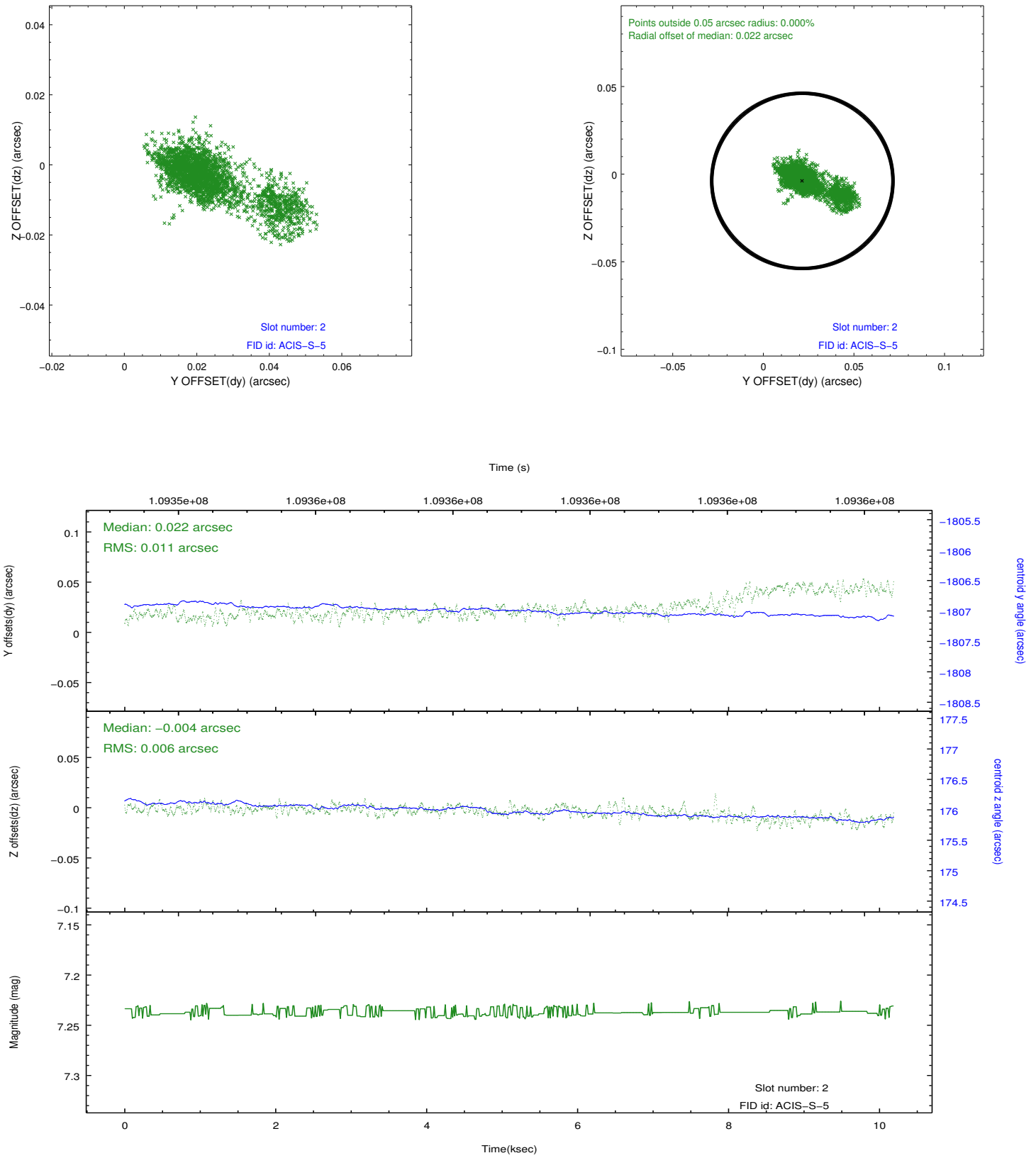
2.5.1 Slot 0



2.5.2 Slot 1



2.5.3 Slot 2



A Summary

A.1 Status

V&V Scientist	Jen Lauer
V&V Date (YYYY-MM-DD)	2012.09.21
V&V Edition	1
V&V Disposition and Status	OK
V&V Charge Time	9.774

A.2 Comments