

# V&V Reference Report

## L2 ASCDS Version : 7.6.9

Observation 2214 - L2 Version 001  
Chandra X-Ray Center

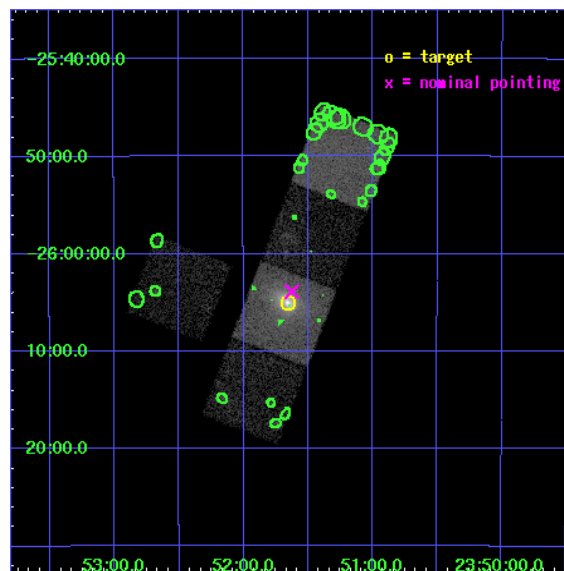
L2 Processing Date : Dec 8 2006

## Contents

<b>1</b>	<b>Front</b>	<b>2</b>
<b>2</b>	<b>OBI</b>	<b>3</b>
2.1	OBI . . . . .	3
2.1.1	Images . . . . .	3
2.1.2	Bias . . . . .	3
2.1.3	Parameters . . . . .	4
2.1.4	Events . . . . .	4
2.2	Compared Parameters . . . . .	5
2.3	Aspect . . . . .	6
2.4	Star Slots . . . . .	9
2.4.1	Slot 3 . . . . .	9
2.4.2	Slot 4 . . . . .	10
2.4.3	Slot 5 . . . . .	11
2.4.4	Slot 6 . . . . .	12
2.4.5	Slot 7 . . . . .	13
2.5	FID Slots . . . . .	14
2.5.1	Slot 0 . . . . .	14
2.5.2	Slot 1 . . . . .	15
2.5.3	Slot 2 . . . . .	16
<b>3</b>	<b>Point Sources</b>	<b>17</b>
<b>A</b>	<b>Summary</b>	<b>18</b>
A.1	Status . . . . .	18
A.2	Comments . . . . .	18

# 1 Front

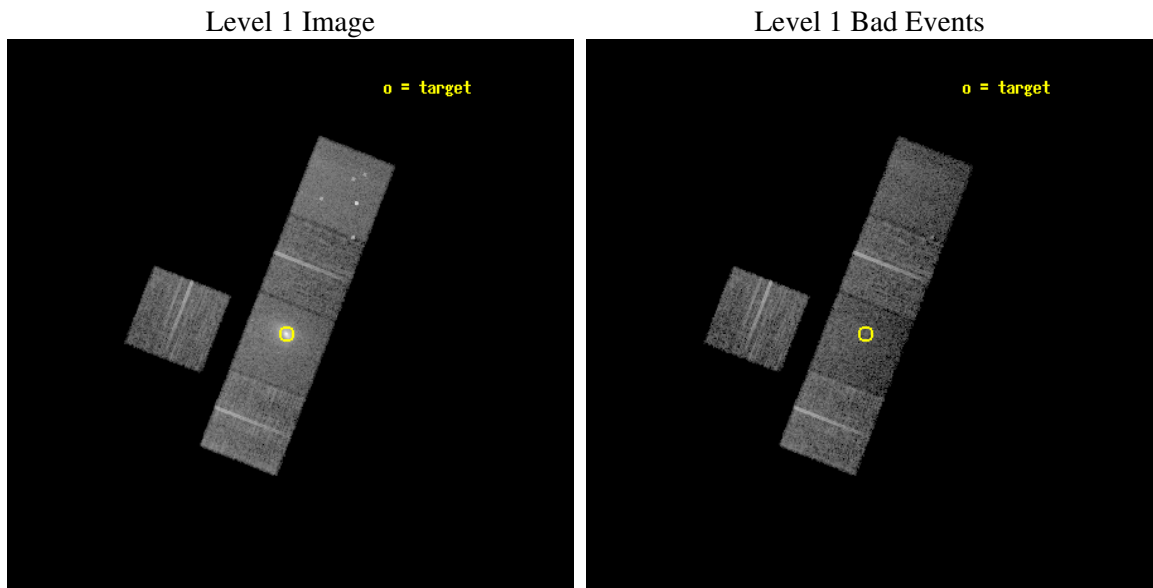
seq_num	800153
obs_id	2214
title	CHANDRA AND HST OBSERVATIONS OF THE BRIGHTEST CLUSTER LENSES
observer	Dr Steven Allen
object	ABELL 2667
dtcycle	0
cycle	P
ra_targ	357.912917
dec_targ	-26.084444
ra_nom	357.90637903711
dec_nom	-26.06446730588
roll_nom	111.24509194576
revision	2
ontime	9774.2999812067
livetime	9646.5915562172
ontime3	9768.0180607289
ontime5	9774.2999812067
ontime6	9774.2999812067
ontime7	9774.2999812067
ontime8	9761.7360006422
l2events	92730



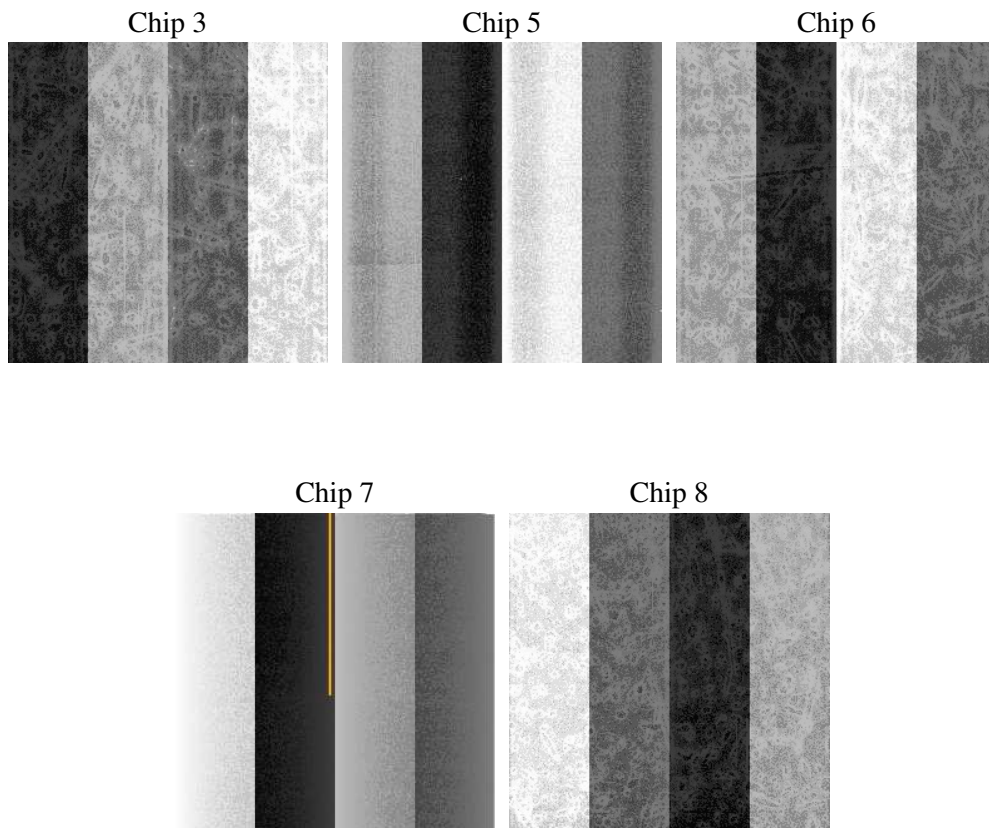
## 2 OBI

### 2.1 OBI

#### 2.1.1 Images



#### 2.1.2 Bias



### 2.1.3 Parameters

obi_num	0
ascdsver	7.6.9
caldbver	3.2.4
date	2006-12-08T07:31:12
revision	2

sched_exp_time	10000.000000
ontime	9777.932641089
ontime3	9771.6507306248
ontime5	9777.9326710105
ontime6	9777.9326511025
ontime7	9777.932641089
ontime8	9765.3685409278
llevents	332578

### 2.1.4 Events

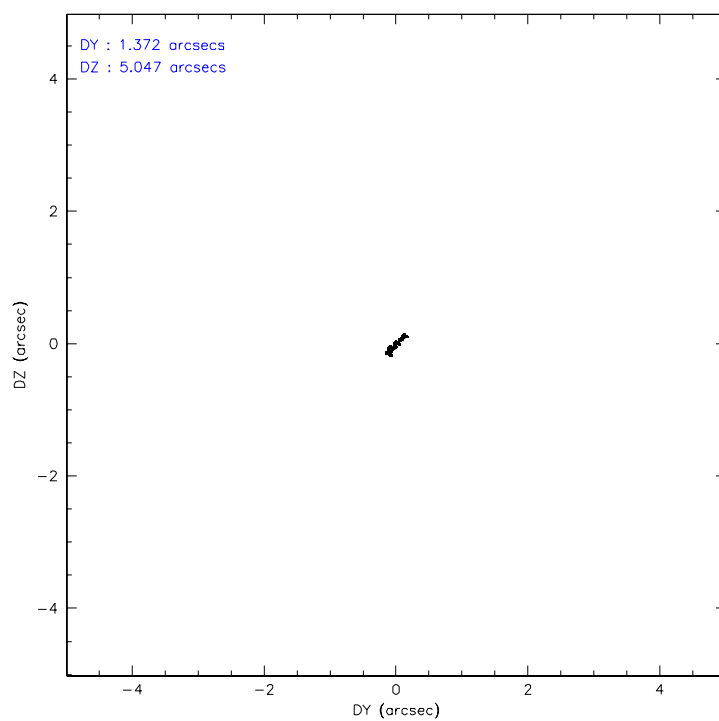
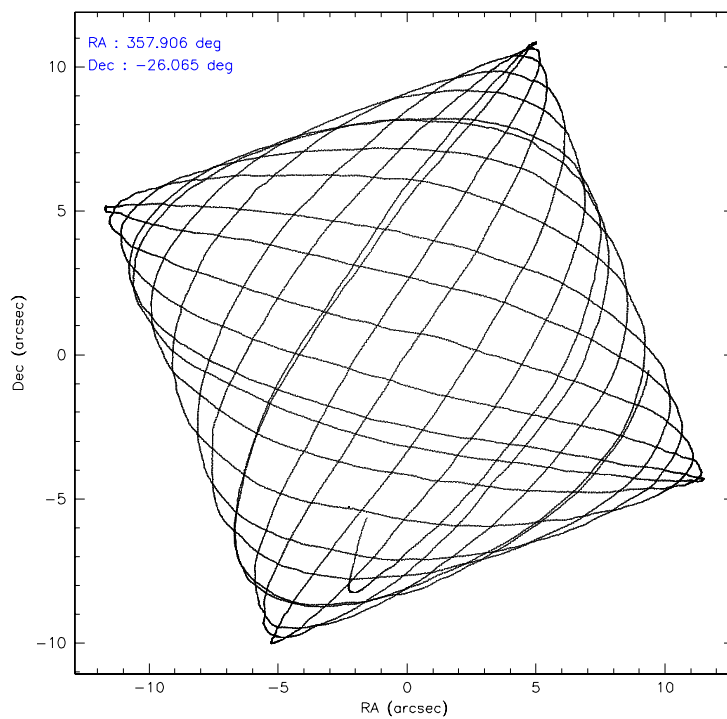
	ccd 3	ccd 5	ccd 6	ccd 7	ccd 8
level 1 events	56173	70022	55107	79876	71400
rejected events	51138	35461	48661	32380	56163
rejected %	91%	50%	88%	40%	78%

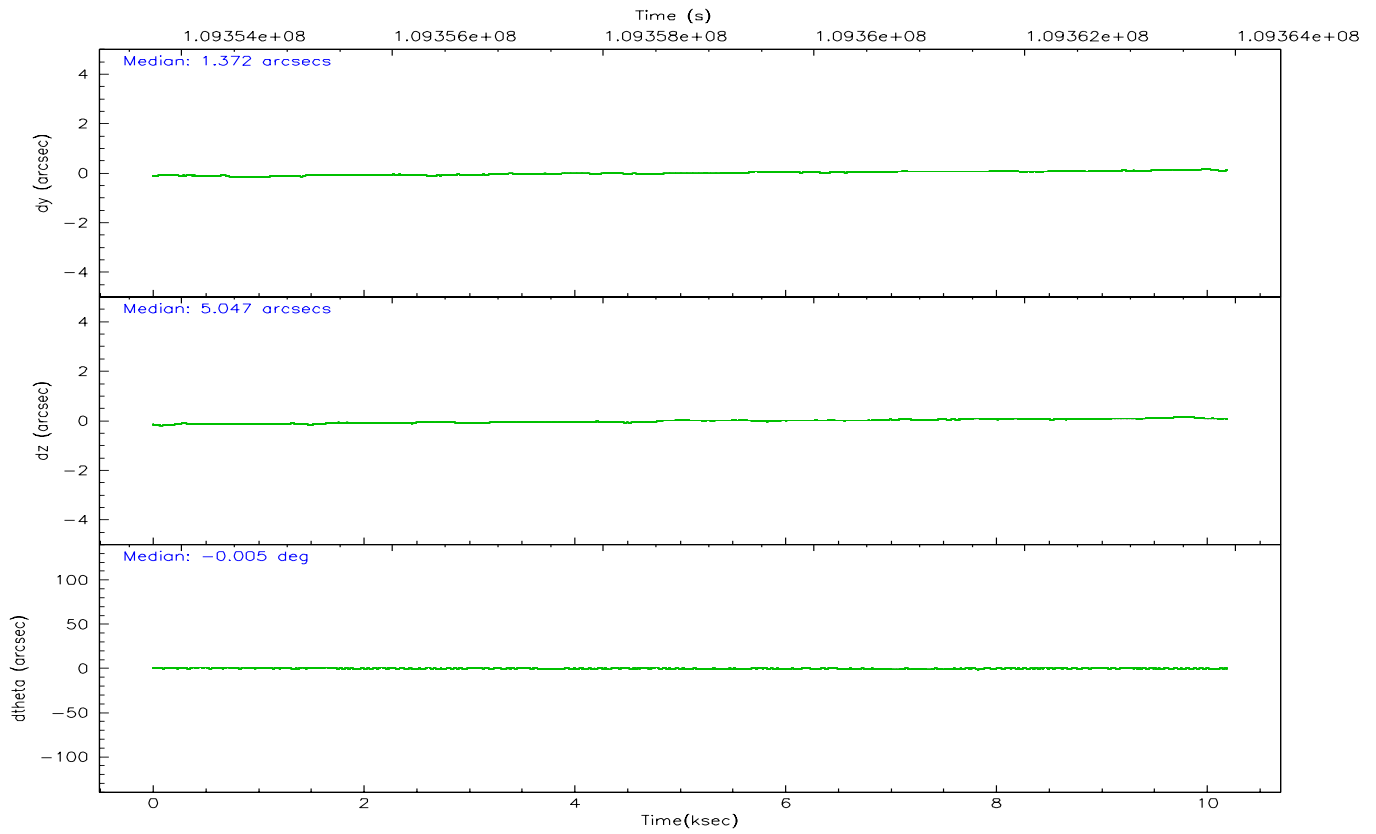
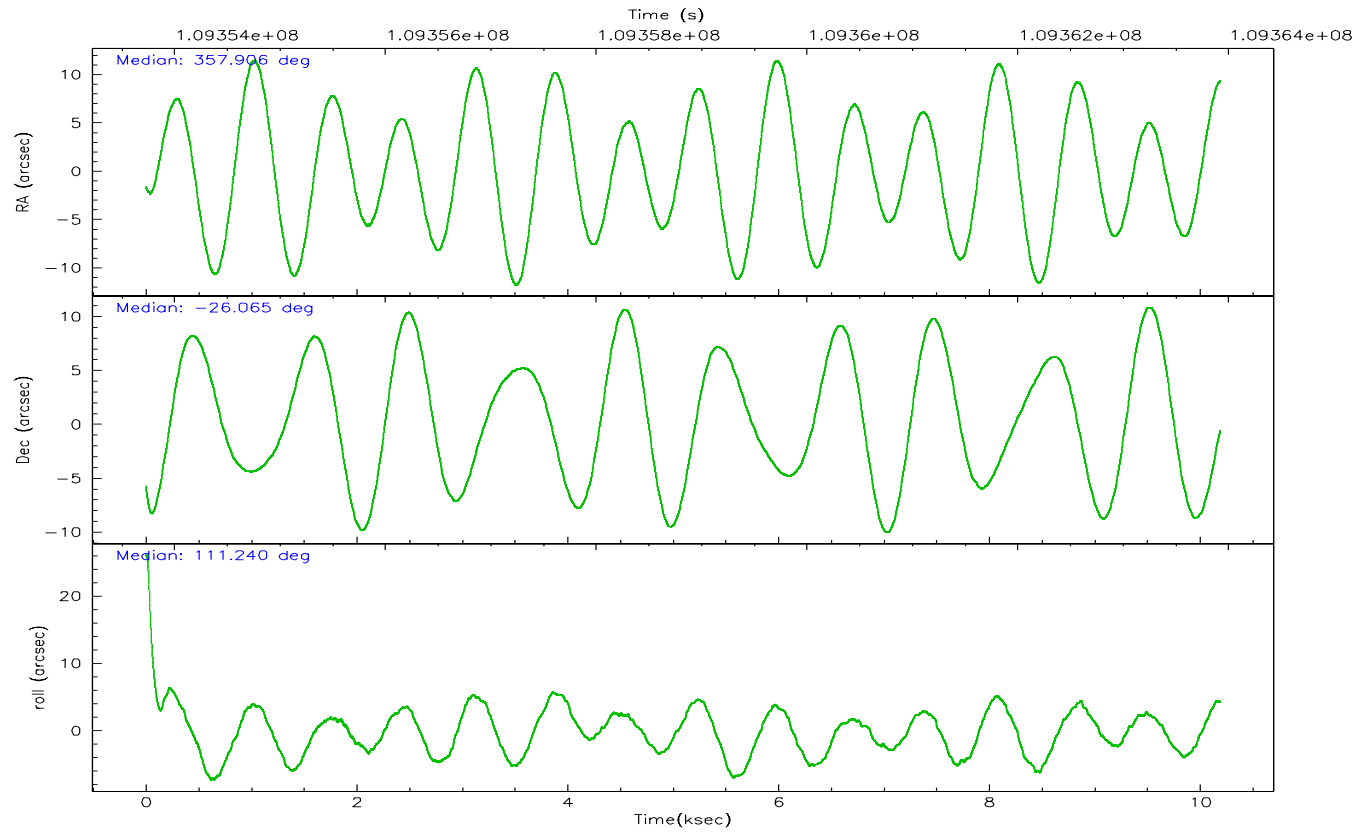
	ccd 3	ccd 5	ccd 6	ccd 7	ccd 8
grade 0 events	1840	4518	2772	9402	4655
	3%	6%	5%	11%	6%
grade 1 events	19	110	31	30	56
	0%	0%	0%	0%	0%
grade 2 events	1033	9863	1246	12297	3252
	1%	14%	2%	15%	4%
grade 3 events	614	939	648	4152	1677
	1%	1%	1%	5%	2%
grade 4 events	535	867	616	4097	1531
	0%	1%	1%	5%	2%
grade 5 events	1928	3742	2006	4581	2745
	3%	5%	3%	5%	3%
grade 6 events	1015	18379	1164	17559	4123
	1%	26%	2%	21%	5%
grade 7 events	49189	31604	46624	27758	53361
	87%	45%	84%	34%	74%

## 2.2 Compared Parameters

Parameter	Planned	Actual	Parameter	Planned	Actual
Instrument	ACIS	ACIS	Obspar format version number	6	6
Detector	ACIS-35678	ACIS-35678	Obspar file type	PREDICTED	ACTUAL
Grating	NONE	NONE	Obspar update status	NONE	UPDATED
Data mode	VFAINT	VFAINT	Number of optional ACIS chips dropped	0	0
Observation mode	POINTING	POINTING	On-chip summing requested	N	N
Pointing RA	357.930252	357.9063790371142	Subarray requested	NONE	NONE
Pointing Dec	-26.081293	-26.06446730587951	Alternating exposures requested	N	N
Pointing Roll	111.098934	111.245091945757	Primary exposure time	0.000000	3.1
SIM focus pos (mm)	-0.684267	-0.6828225247311905			
SIM defocus (mm)	0	0.001444936568705701			
SIM translation stage pos (mm)	-190.132523	-190.1425803651734			
SIM translation stage offset (mm)	0	0.01005778216563158			
Observation start time	109353916.184000	109353336.29345			
Observation start date	2001-06-19T16:04:12	2001-06-19T15:55:36			
Observation end time	109363916.184000	109364589.76889			
Observation end date	2001-06-19T18:50:52	2001-06-19T19:03:09			
Read mode	TIMED	TIMED			

## 2.3 Aspect





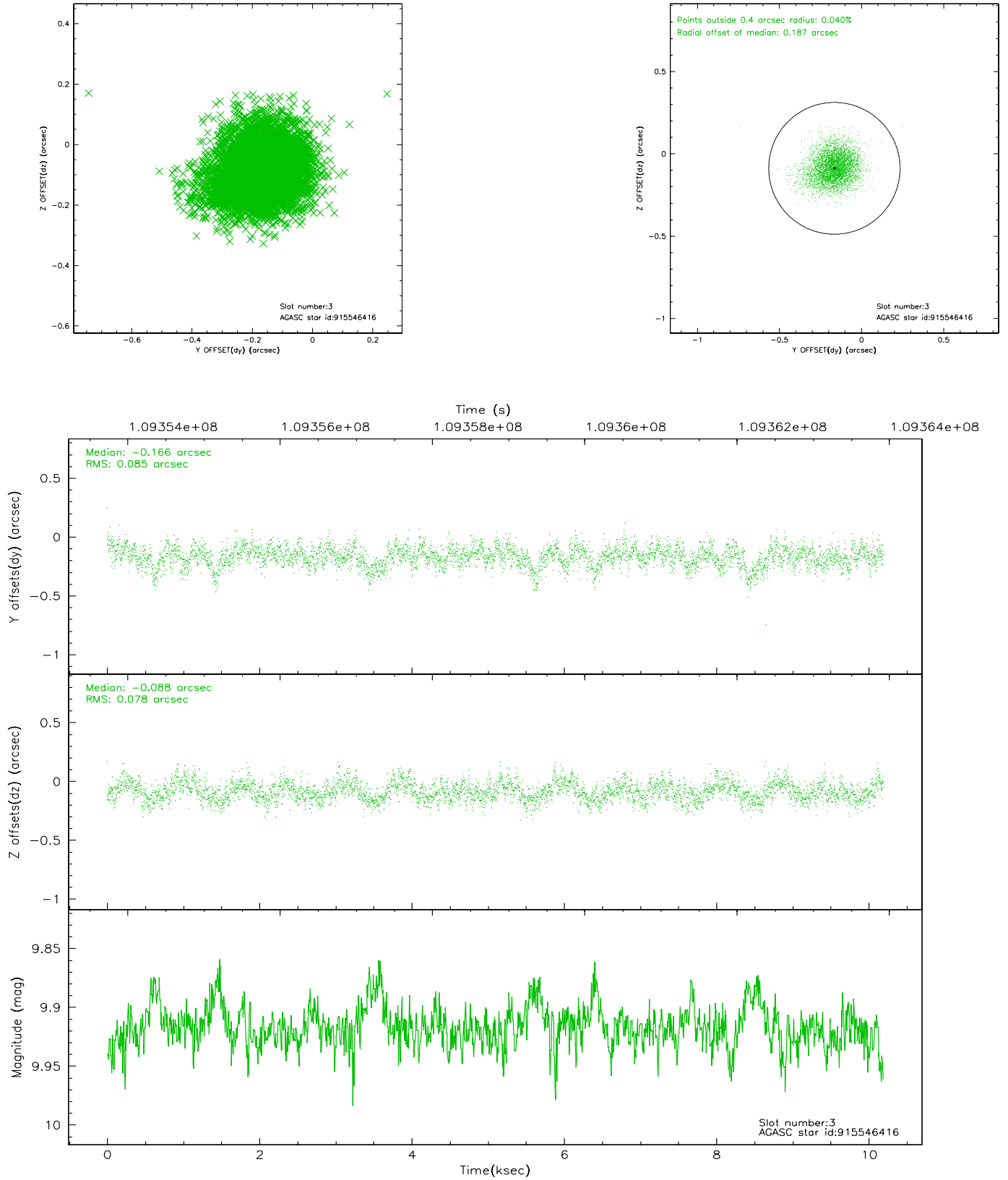
### Slot Statistics

slot	status	id	mag	n_pts	med_dy	med_dz	dr1	dr2	ra	dec	mean_y	mean_z
0	FID	ACIS-S-2	7.11	2486	-0.035	0.009	0.010	0.024	0.000000	0.000000	-753.97	-1726.10
1	FID	ACIS-S-4	7.20	2486	-0.046	0.015	0.009	0.038	0.000000	0.000000	2159.02	181.91
2	FID	ACIS-S-5	7.24	2486	0.052	-0.015	0.010	0.028	0.000000	0.000000	-1806.09	176.06
3	GUIDE	915546416	9.92	4965	-0.166	-0.088	0.121	0.199	357.544948	-25.638088	1936.97	593.28
4	GUIDE	915547296	8.89	4969	-0.080	-0.118	0.069	0.115	357.677475	-25.908473	874.79	540.26
5	GUIDE	915543976	9.40	4971	0.065	0.162	0.091	0.145	358.296290	-26.060420	-357.02	-1130.43
6	GUIDE	915541272	9.96	4972	-0.038	0.276	0.119	0.195	358.336379	-25.689400	840.28	-1735.91
7	GUIDE	915538200	9.77	4965	0.230	-0.239	0.141	0.224	357.458497	-26.842105	-2012.22	2400.19

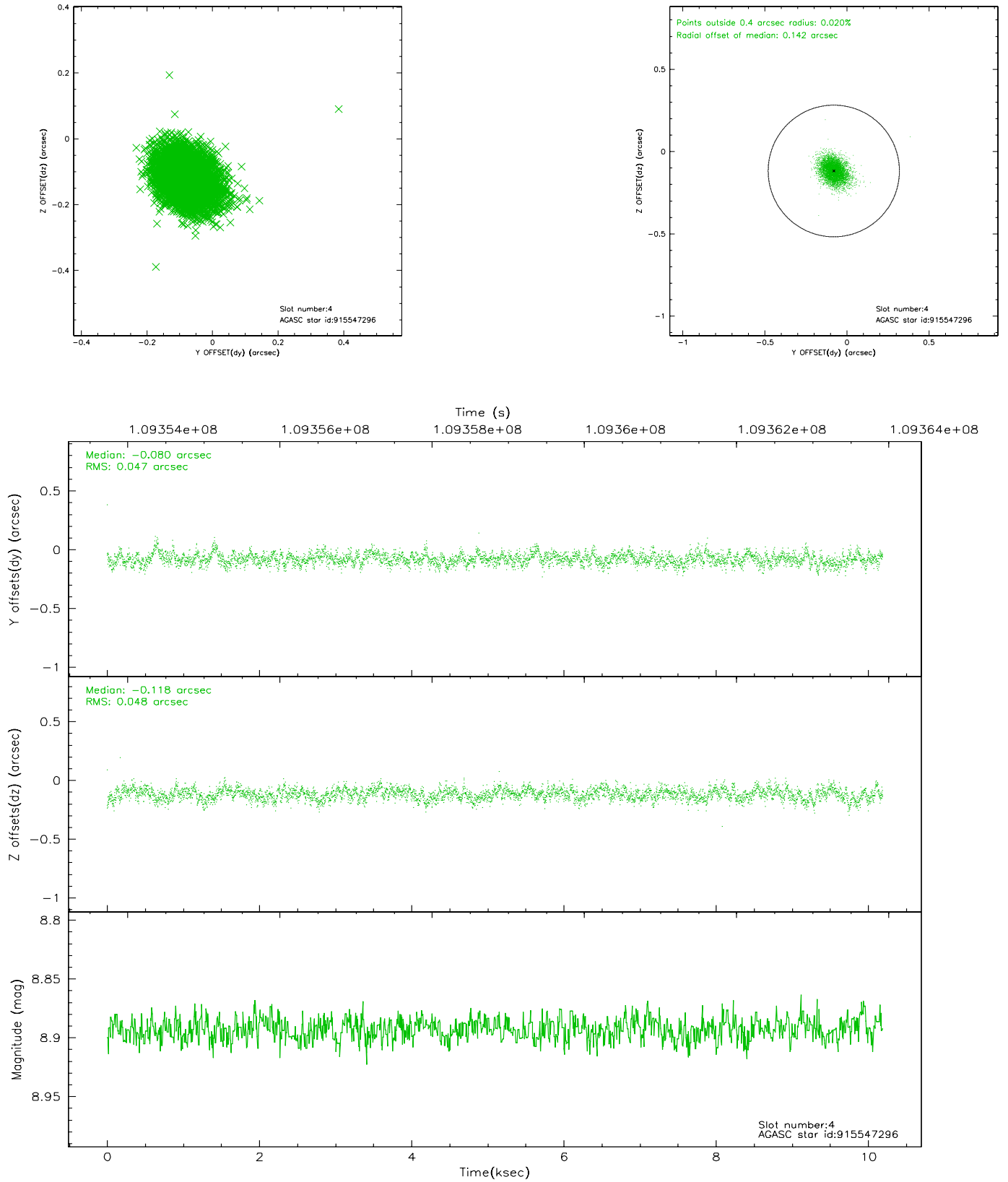


## 2.4 Star Slots

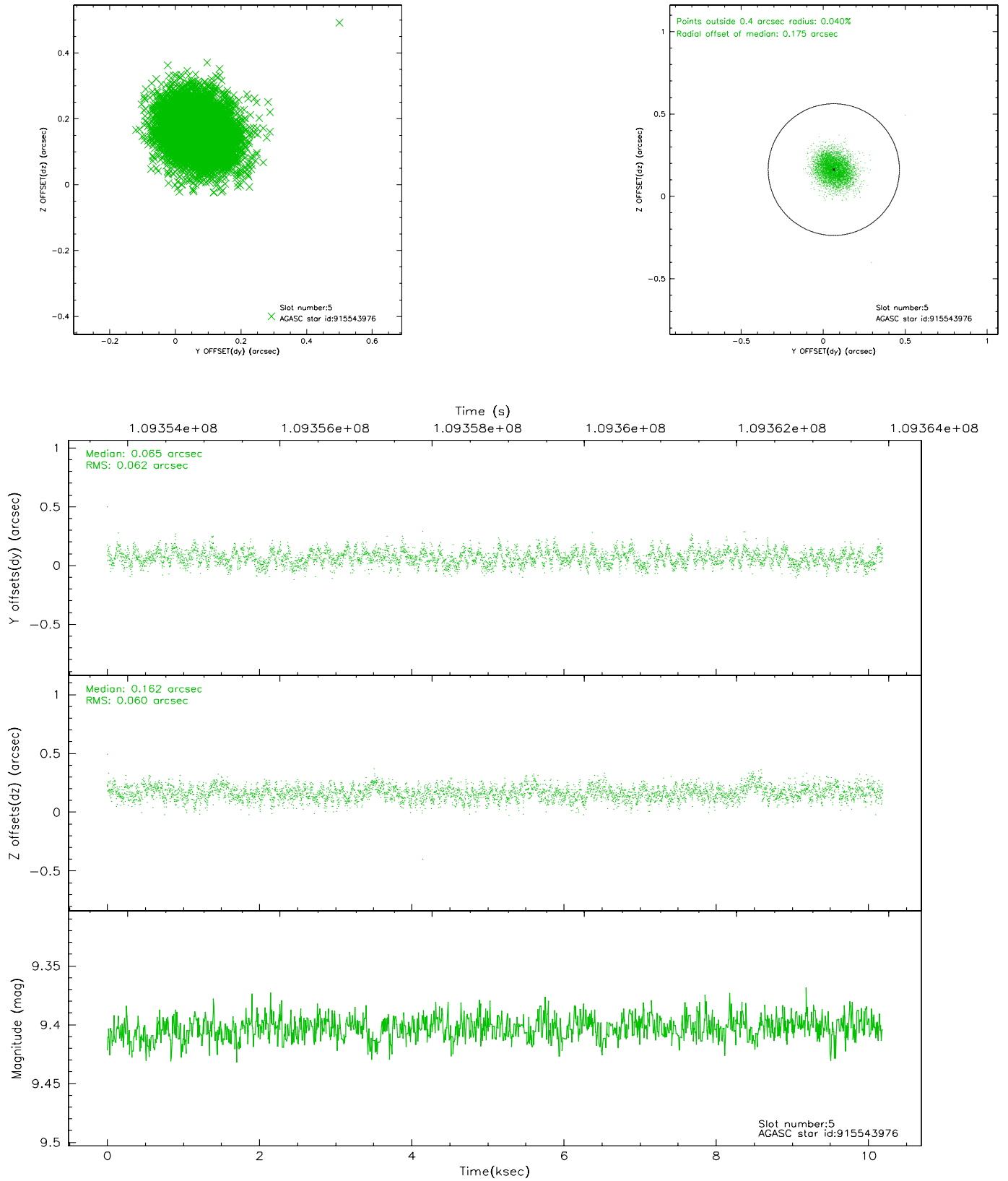
### 2.4.1 Slot 3



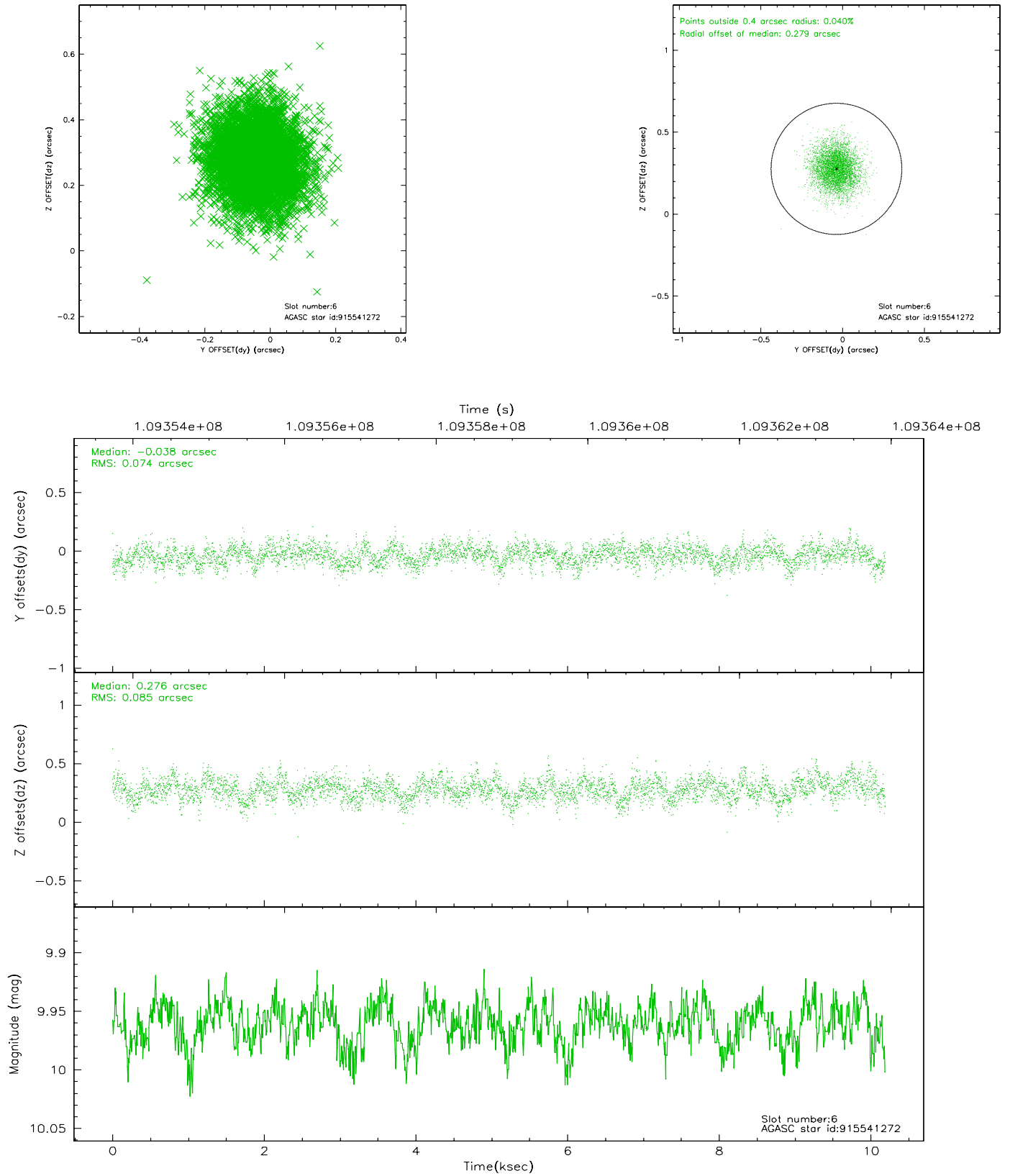
## 2.4.2 Slot 4



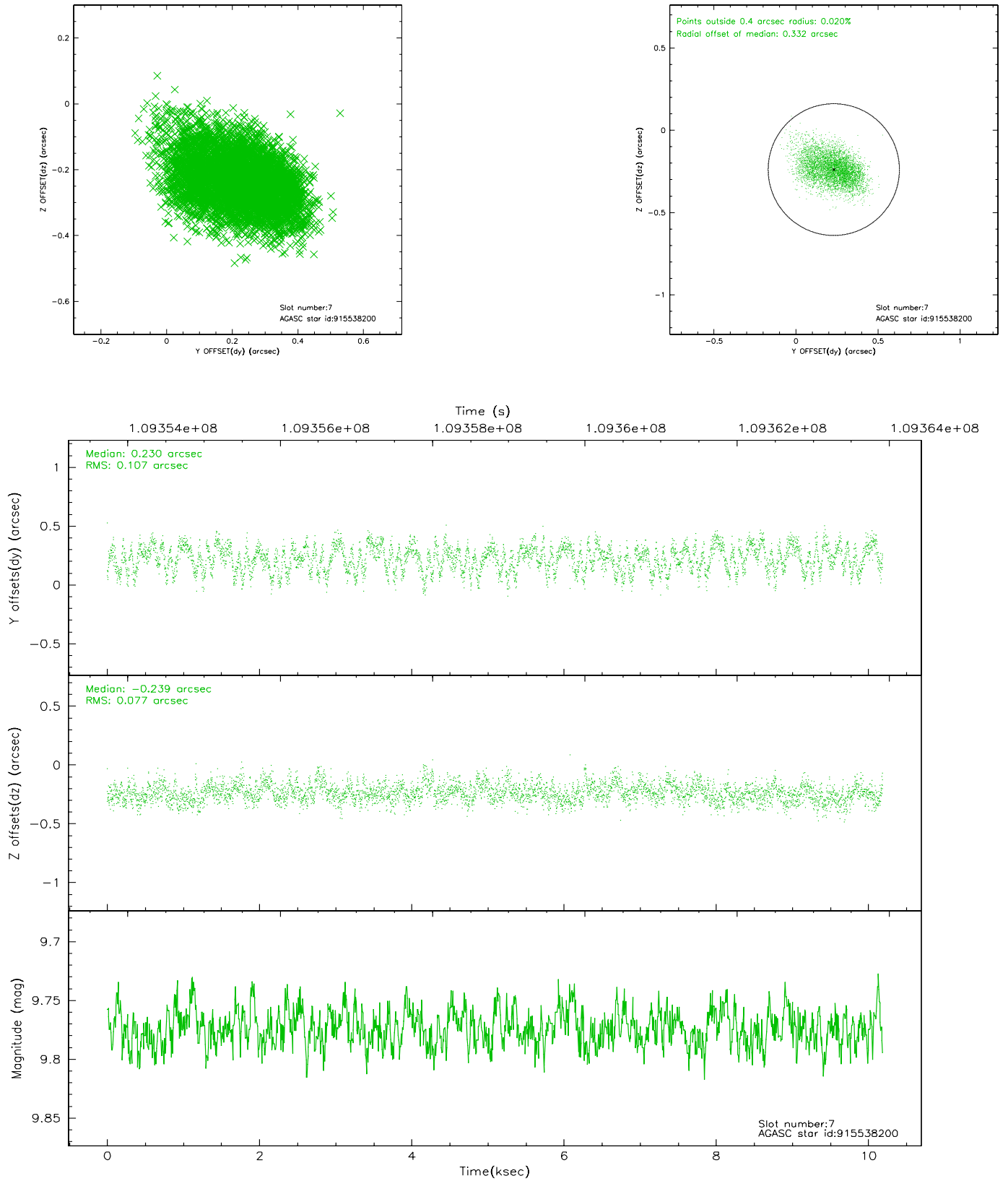
### 2.4.3 Slot 5



## 2.4.4 Slot 6

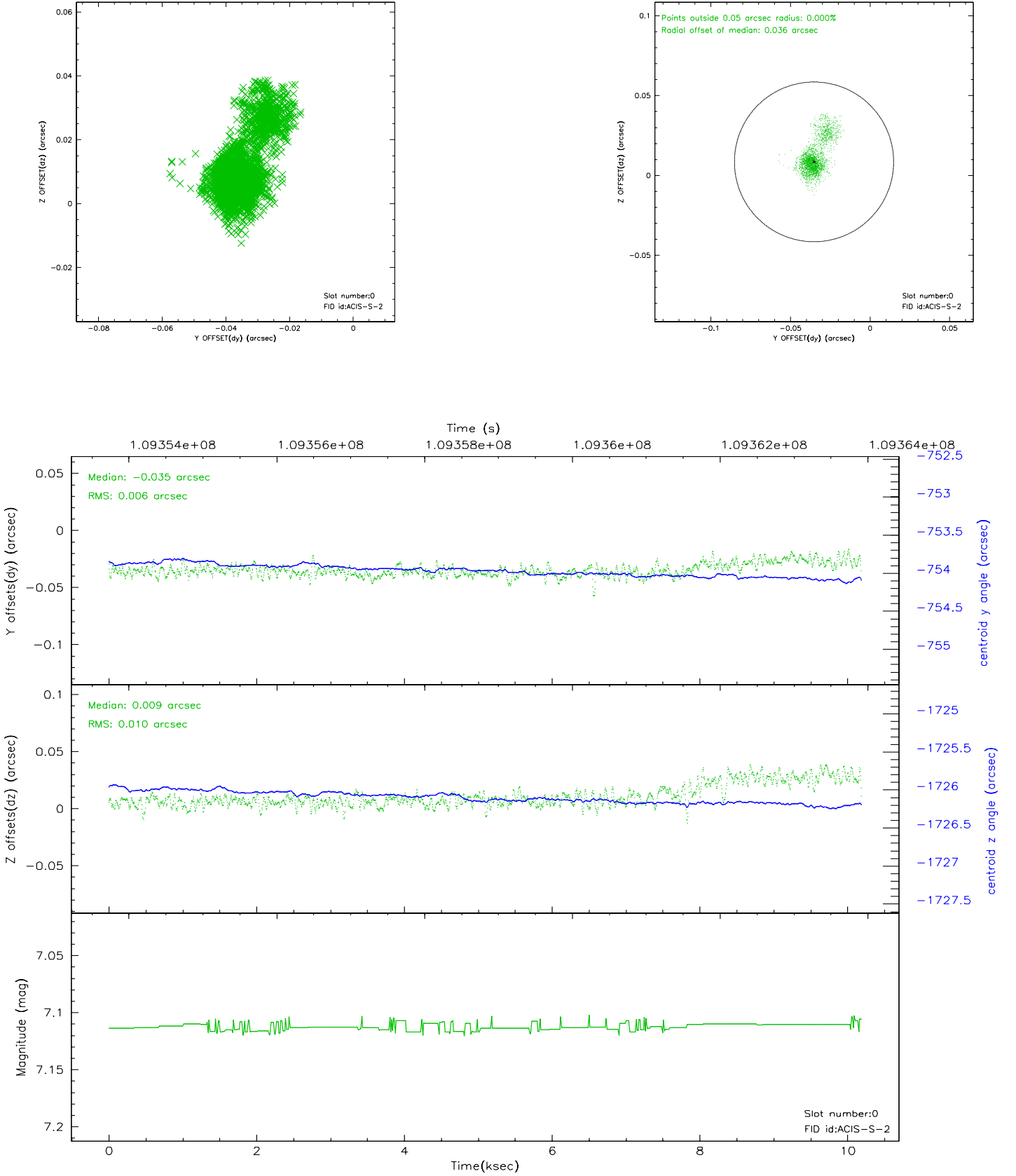


## 2.4.5 Slot 7

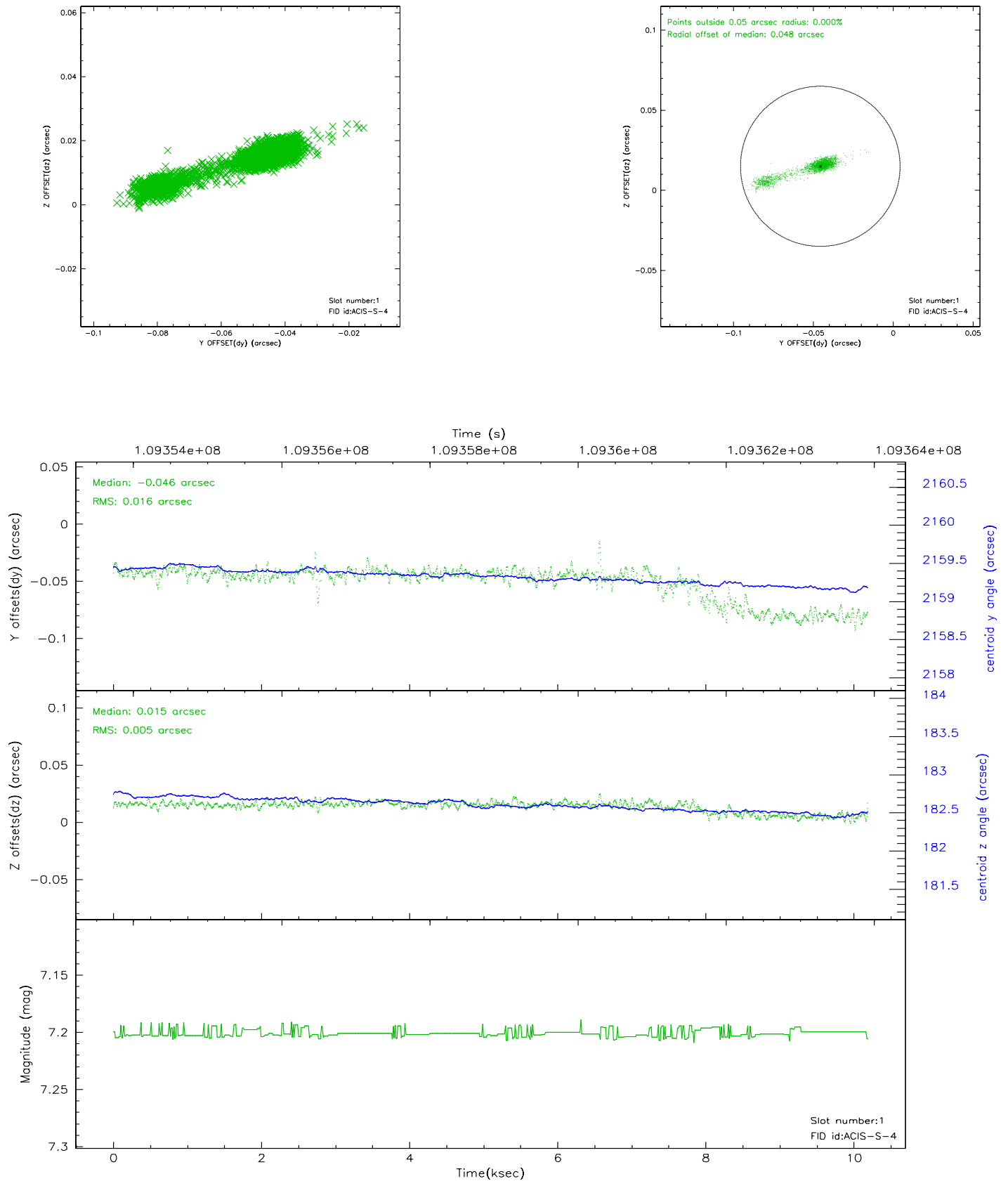


## 2.5 FID Slots

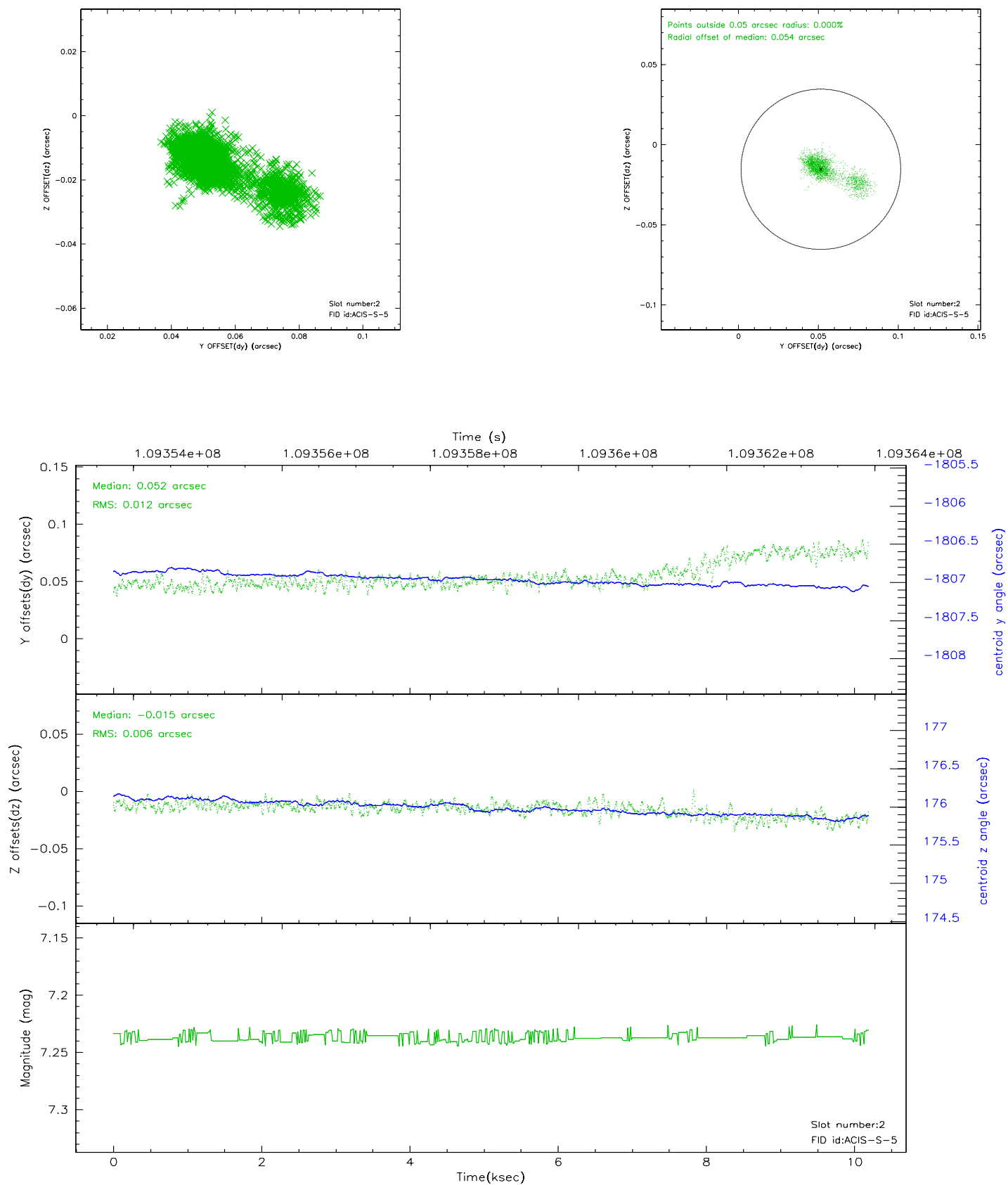
### 2.5.1 Slot 0



## 2.5.2 Slot 1

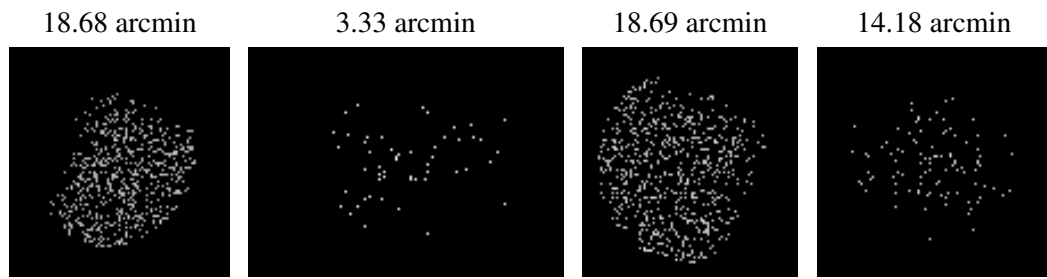


## 2.5.3 Slot 2





### 3 Point Sources



## A Summary

### A.1 Status

V&V Scientist	Beth Sundheim
V&V Date (YYYY-MM-DD)	2006.12.08
V&V Edition	1
V&V Disposition and Status	OK
V&V Charge Time	9.774

### A.2 Comments