

V&V Reference Report

L2 ASCDS Version : 7.6.9

Observation 2211 - L2 Version 001
Chandra X-Ray Center

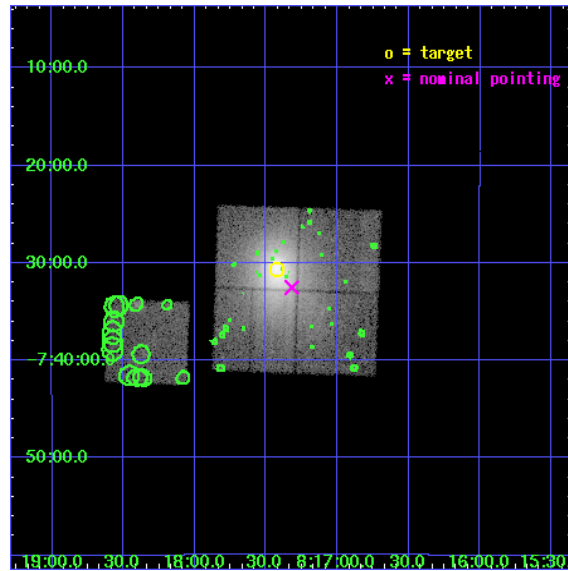
L2 Processing Date : Nov 15 2006

Contents

1	Front	2
2	OBI	3
2.1	OBI	3
2.1.1	Images	3
2.1.2	Bias	3
2.1.3	Parameters	4
2.1.4	Events	4
2.2	Compared Parameters	5
2.3	Aspect	6
2.4	Star Slots	9
2.4.1	Slot 3	9
2.4.2	Slot 4	10
2.4.3	Slot 5	11
2.4.4	Slot 6	12
2.4.5	Slot 7	13
2.5	FID Slots	14
2.5.1	Slot 0	14
2.5.2	Slot 1	15
2.5.3	Slot 2	16
3	Point Sources	17
A	Summary	18
A.1	Status	18
A.2	Comments	18

1 Front

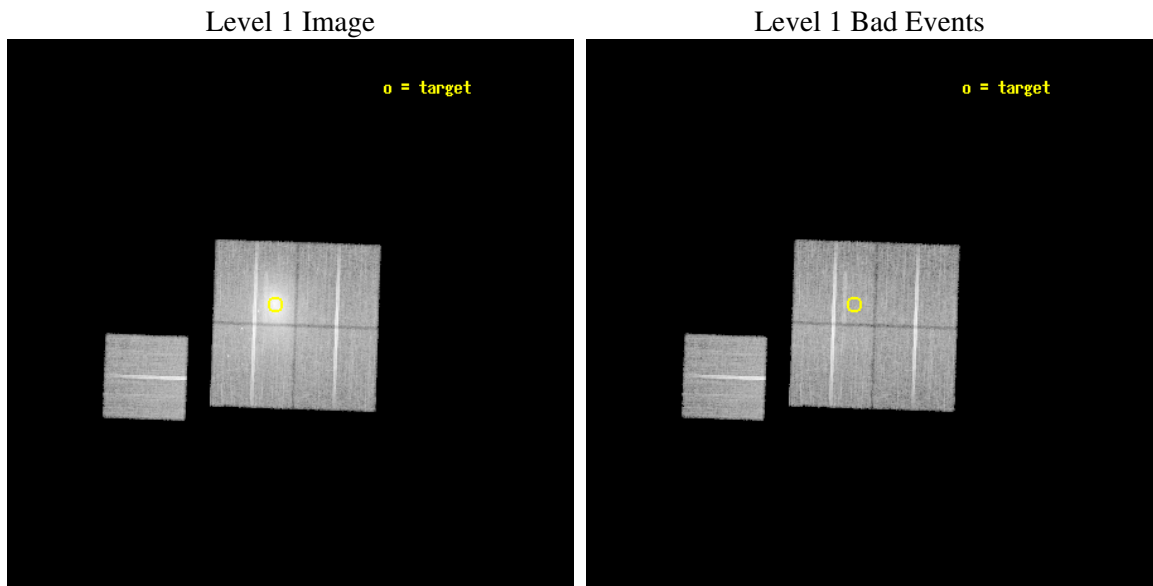
seq_num	800150
obs_id	2211
title	COOLING FLOWS WITHOUT CENTRAL RADIO SOURCES?
observer	John Stocke
object	A644
dtcycle	0
cycle	P
ra_targ	124.355833
dec_targ	-7.511778
ra_nom	124.32970867656
dec_nom	-7.542009887686
roll_nom	272.00698709255
revision	2
ontime	30079.299942166
livetime	29686.291744363
ontime0	30076.158951998
ontime1	30076.158962011
ontime2	30076.159081608
ontime3	30079.299942166
ontime6	30076.137197986
l2events	234435



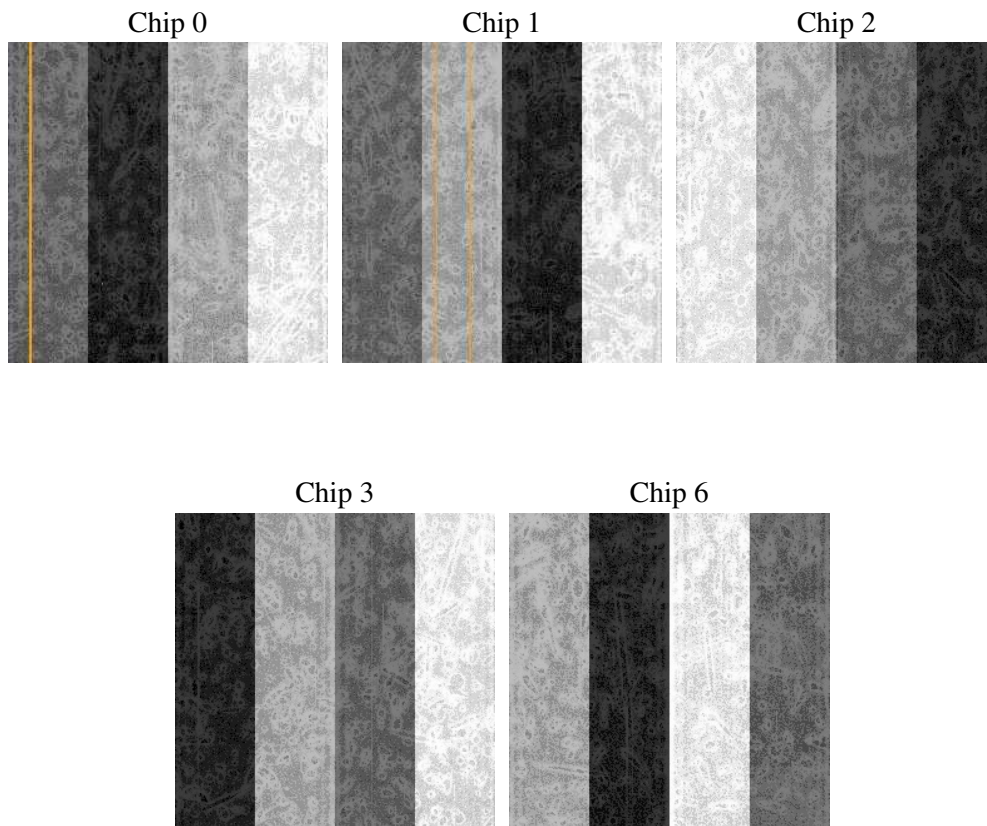
2 OBI

2.1 OBI

2.1.1 Images



2.1.2 Bias



2.1.3 Parameters

obi_num	0
ascdsver	7.6.9
caldsver	3.2.4
date	2006-11-15T23:51:02
revision	2

sched_exp_time	30000.000000
ontime	30081.365235478
ontime0	30078.224225372
ontime1	30078.224235386
ontime2	30078.22437492
ontime3	30081.365235478
ontime6	30078.224275231
l1events	1034066

2.1.4 Events

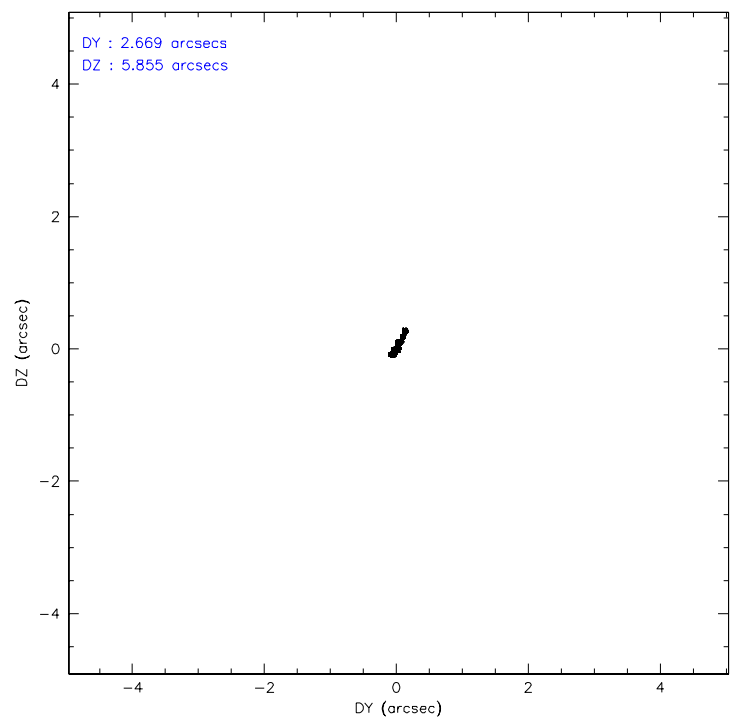
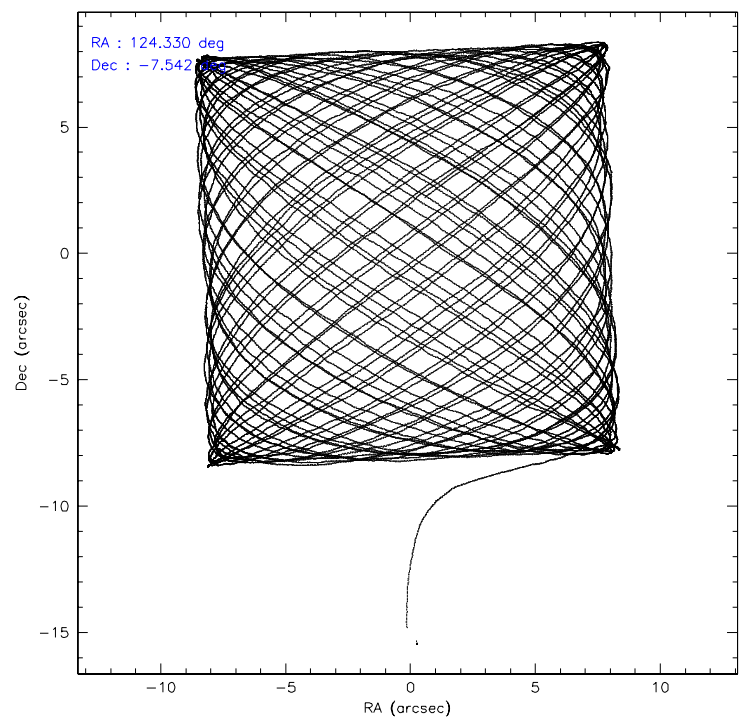
	ccd 0	ccd 1	ccd 2	ccd 3	ccd 6
level 1 events	174446	176353	214886	290704	177677
rejected events	146330	143030	167201	161392	159877
rejected %	83%	81%	77%	55%	89%

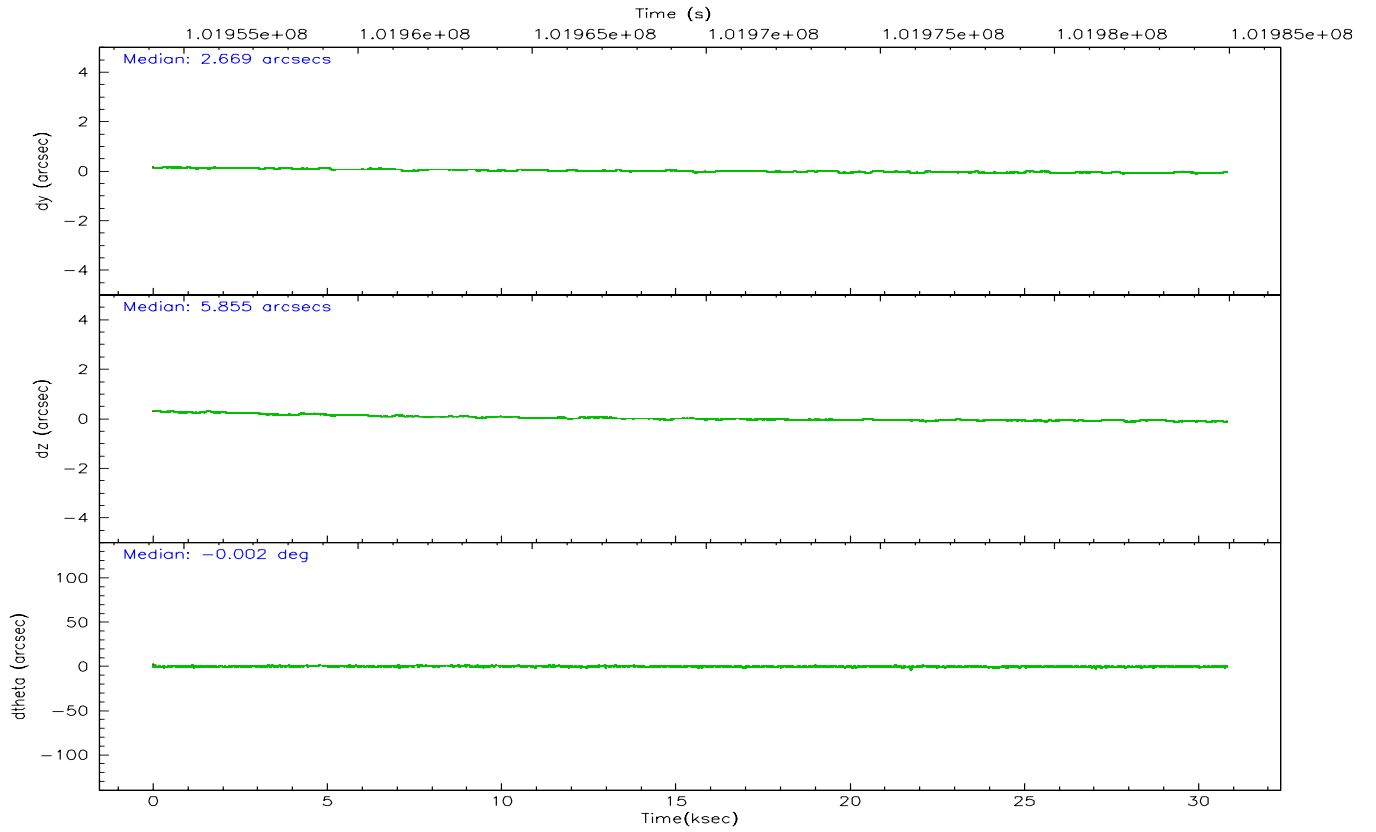
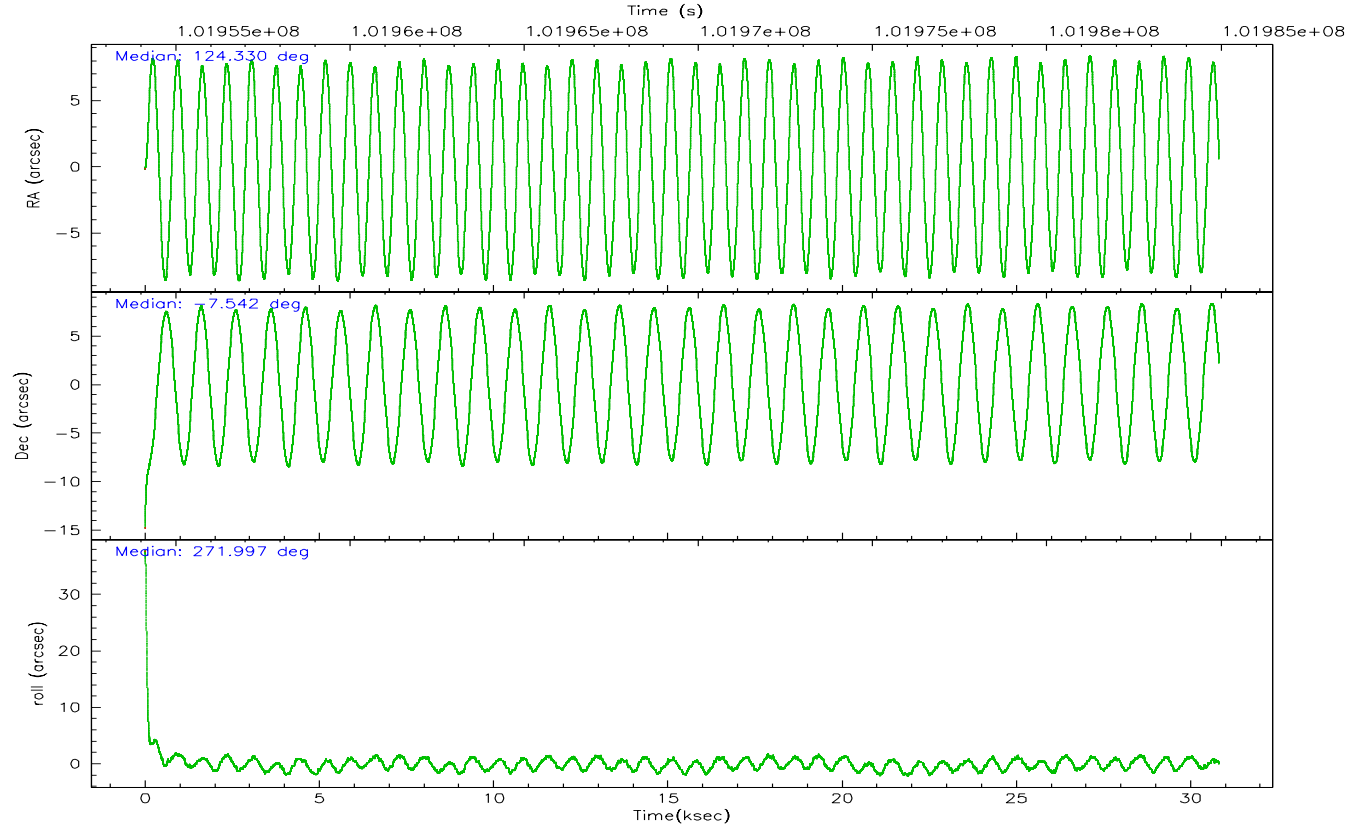
	ccd 0	ccd 1	ccd 2	ccd 3	ccd 6
grade 0 events	15236	18816	31466	98425	6783
	8%	10%	14%	33%	3%
grade 1 events	121	103	185	526	71
	0%	0%	0%	0%	0%
grade 2 events	4944	5310	6898	14485	3558
	2%	3%	3%	4%	2%
grade 3 events	2305	2624	2718	5293	1988
	1%	1%	1%	1%	1%
grade 4 events	2202	2565	2752	5115	1972
	1%	1%	1%	1%	1%
grade 5 events	5389	5795	5122	6122	5999
	3%	3%	2%	2%	3%
grade 6 events	3431	4015	3855	6005	3503
	1%	2%	1%	2%	1%
grade 7 events	140818	137125	161890	154733	153803
	80%	77%	75%	53%	86%

2.2 Compared Parameters

Parameter	Planned	Actual	Parameter	Planned	Actual
Instrument	ACIS	ACIS	Obspar format version number	6	6
Detector	ACIS-01236	ACIS-01236	Obspar file type	PREDICTED	ACTUAL
Grating	NONE	NONE	Obspar update status	NONE	UPDATED
Data mode	VFAINT	VFAINT	Number of optional ACIS chips dropped	0	0
Observation mode	POINTING	POINTING	On-chip summing requested	N	N
Pointing RA	124.315011	124.3297086765557	Subarray requested	NONE	NONE
Pointing Dec	-7.518720	-7.542009887685981	Alternating exposures requested	N	N
Pointing Roll	271.796357	272.0069870925491	Primary exposure time	0.000000	3.1
SIM focus pos (mm)	-0.782348	-0.7809083437167272			
SIM defocus (mm)	0	0.001439871863259334			
SIM translation stage pos (mm)	-233.592463	-233.5874344608287			
SIM translation stage offset (mm)	0	-0.005018542100998502			
Observation start time	101954944.184000	101953669.8435			
Observation start date	2001-03-26T00:48:00	2001-03-26T00:27:49			
Observation end time	101984944.184000	101985628.31973			
Observation end date	2001-03-26T09:08:00	2001-03-26T09:20:28			
Read mode	TIMED	TIMED			

2.3 Aspect



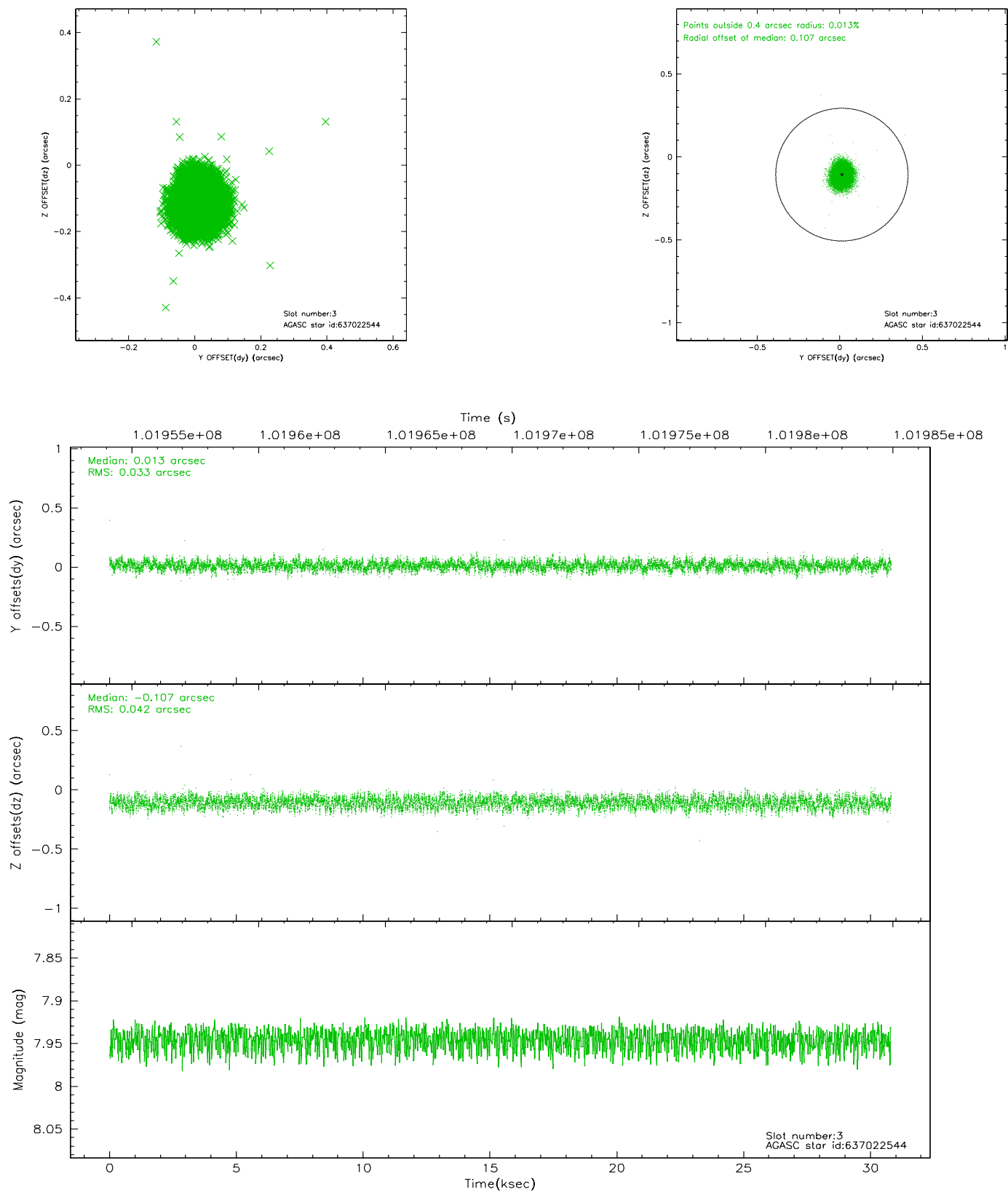


Slot Statistics

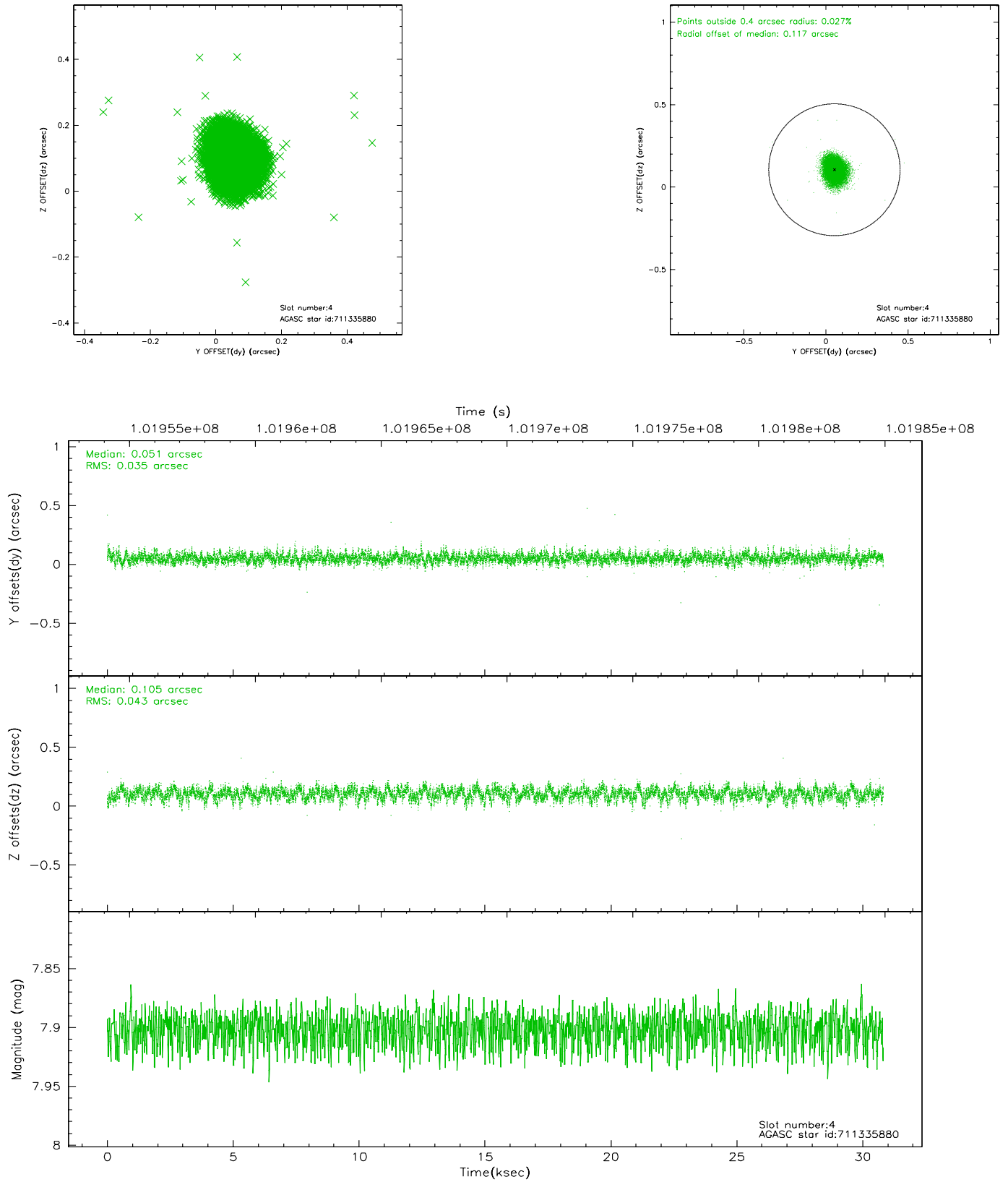
slot	status	id	mag	n_pts	med_dy	med_dz	dr1	dr2	ra	dec	mean_y	mean_z
0	FID	ACIS-I-2	7.16	7516	-0.023	-0.026	0.009	0.016	0.000000	0.000000	-757.08	-835.64
1	FID	ACIS-I-4	7.18	7515	-0.049	0.029	0.006	0.011	0.000000	0.000000	2156.93	1070.55
2	FID	ACIS-I-5	7.23	7519	-0.028	0.065	0.009	0.014	0.000000	0.000000	-1810.82	1068.52
3	GUIDE	637022544	7.95	15034	0.013	-0.107	0.058	0.089	123.951431	-7.336465	-695.59	-1276.77
4	GUIDE	711335880	7.90	15030	0.051	0.105	0.058	0.095	124.602828	-7.571278	221.59	1021.12
5	GUIDE	637016720	8.01	15035	-0.067	0.044	0.058	0.093	124.059895	-6.973963	-1988.27	-849.54
6	GUIDE	637014640	8.44	15032	-0.038	0.007	0.063	0.101	124.901530	-7.342721	-566.69	2113.24
7	GUIDE	711196920	9.02	15027	0.042	-0.049	0.070	0.114	123.804494	-7.910801	1355.31	-1863.03

2.4 Star Slots

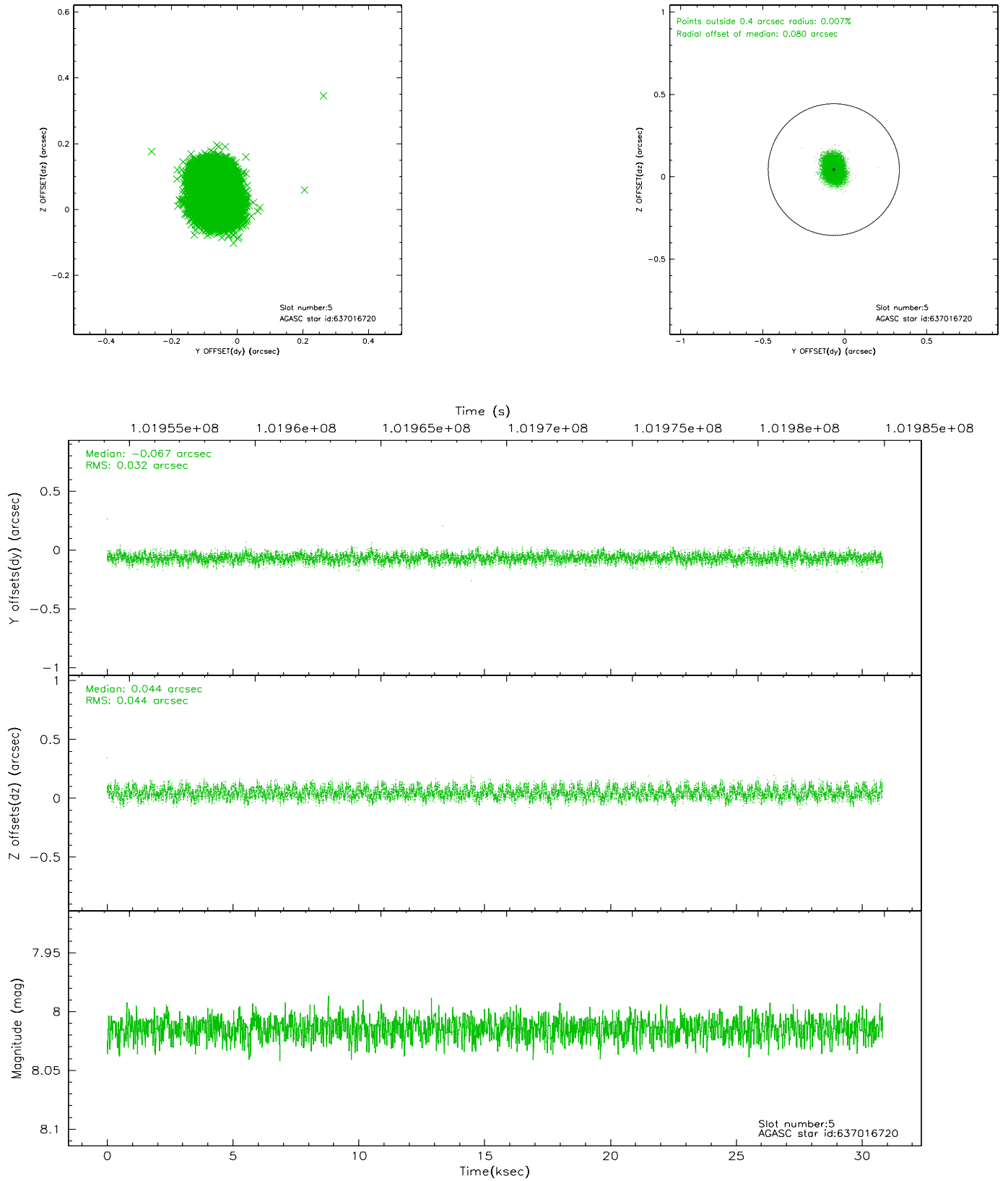
2.4.1 Slot 3



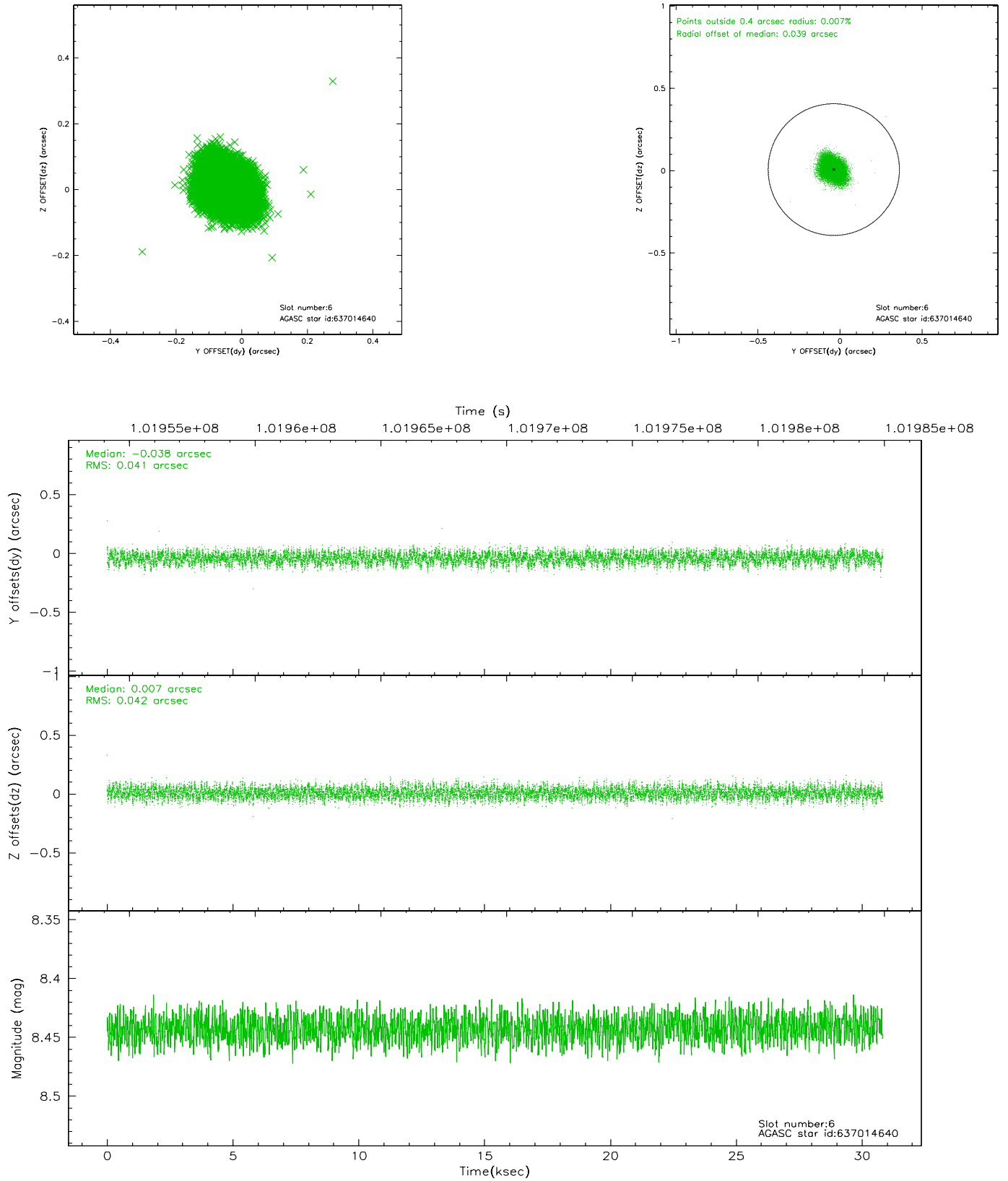
2.4.2 Slot 4



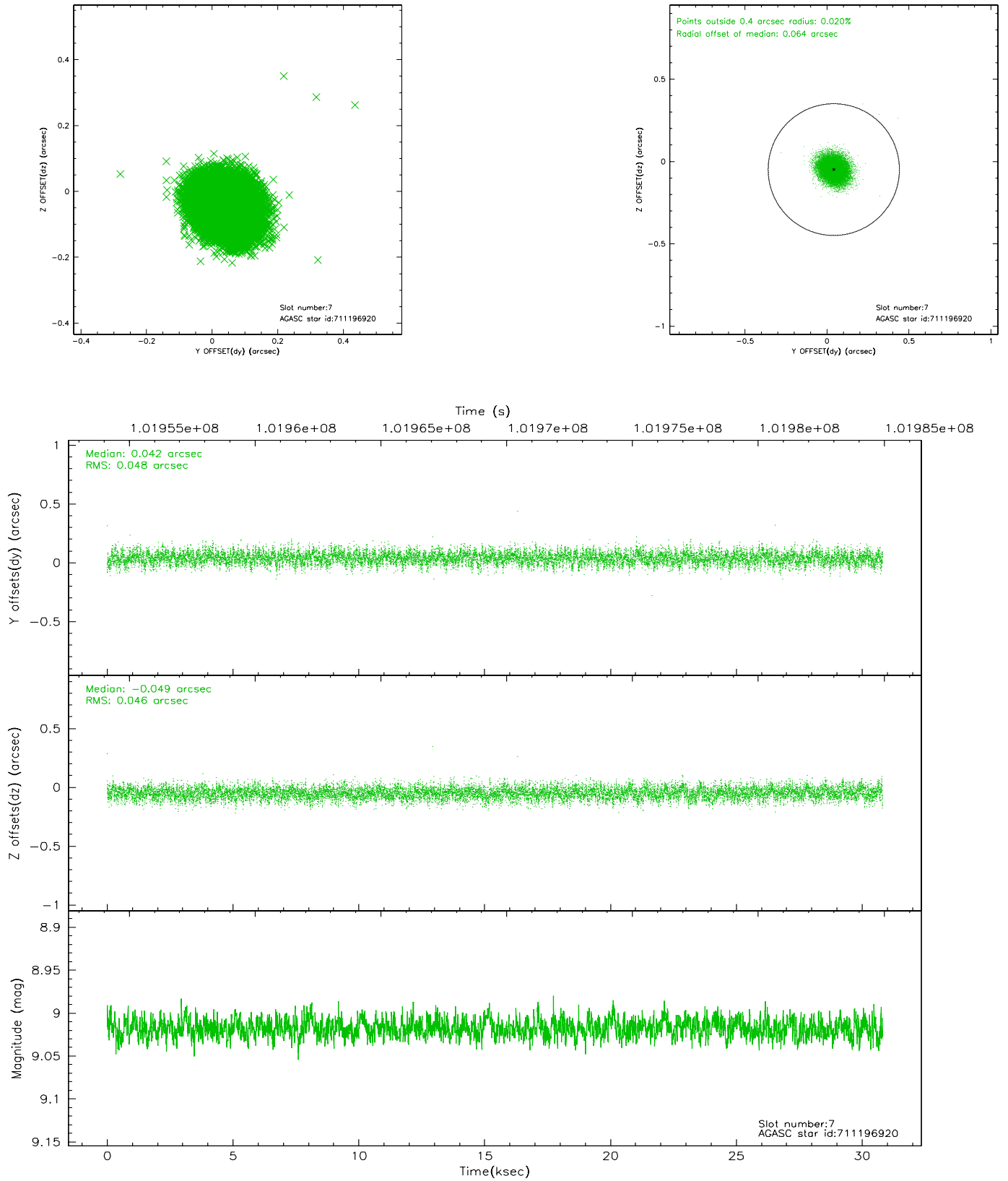
2.4.3 Slot 5



2.4.4 Slot 6

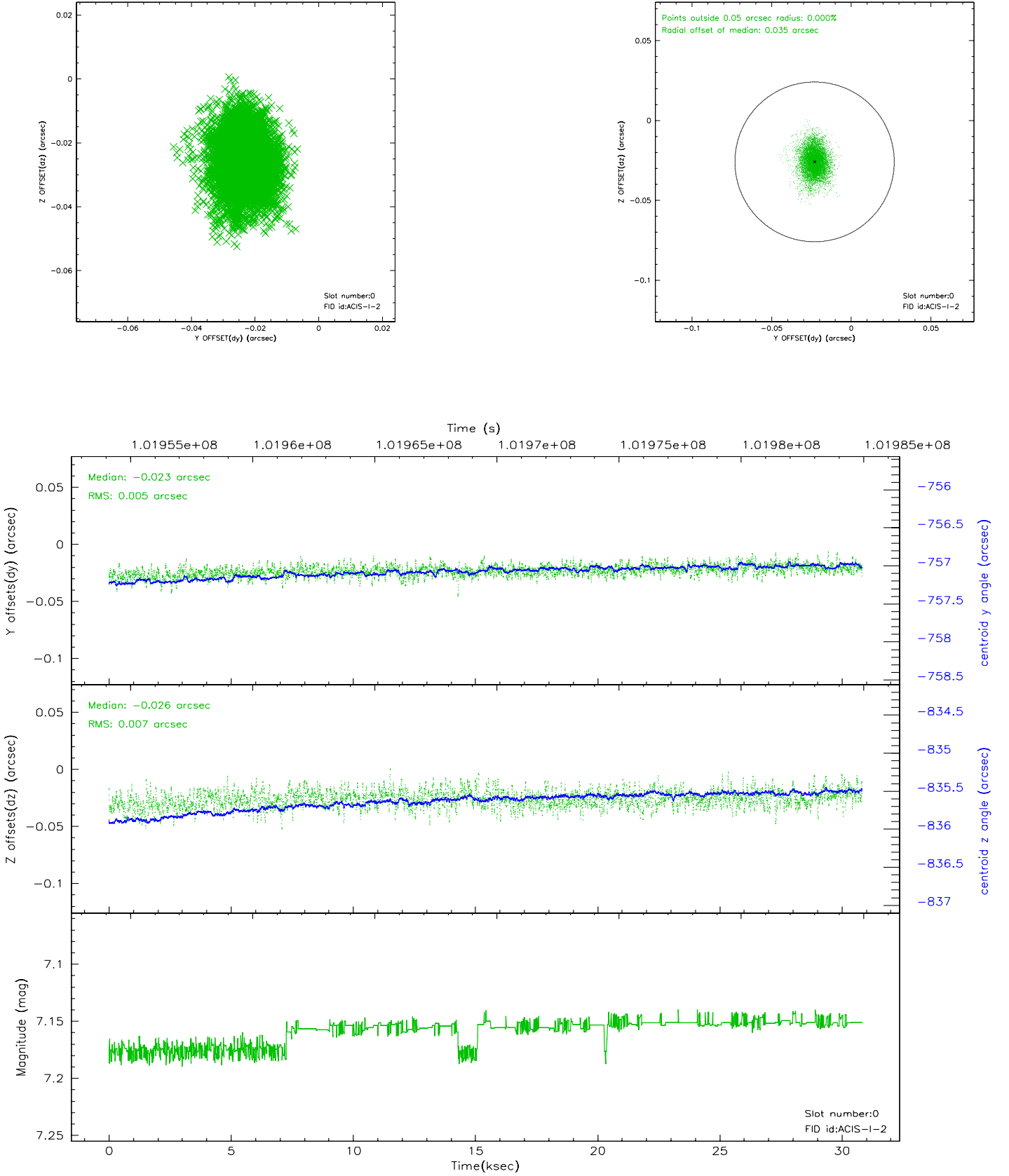


2.4.5 Slot 7

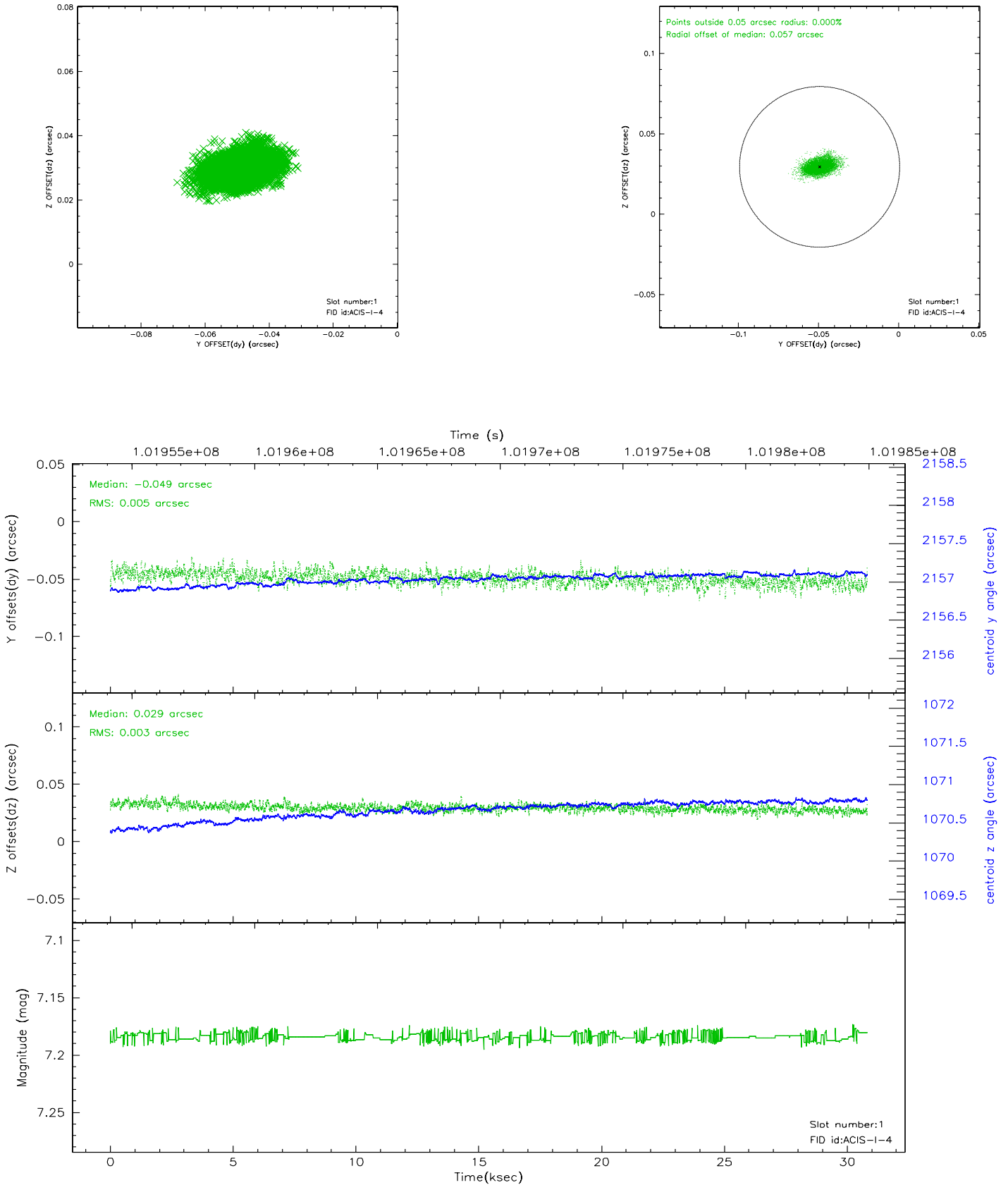


2.5 FID Slots

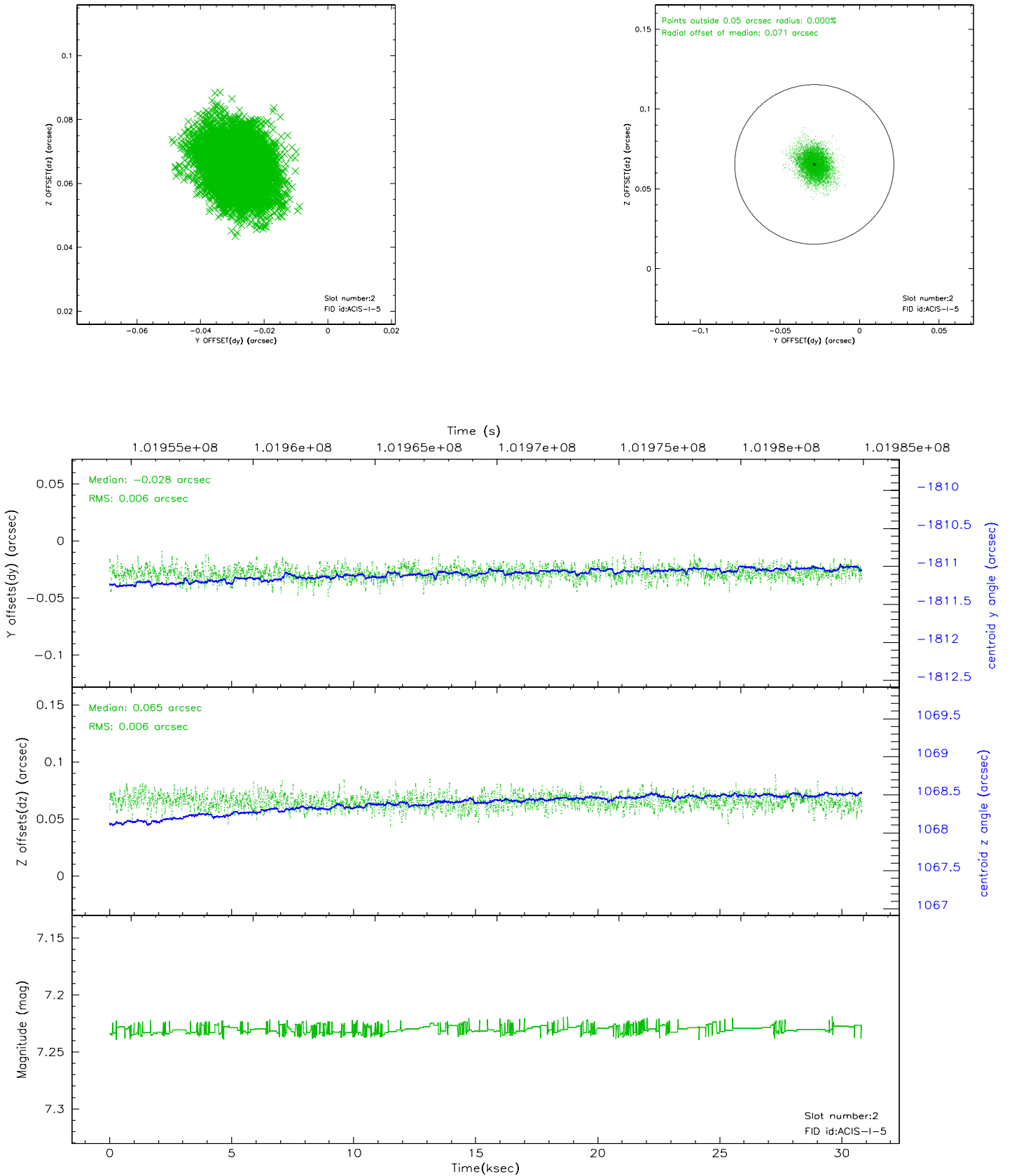
2.5.1 Slot 0



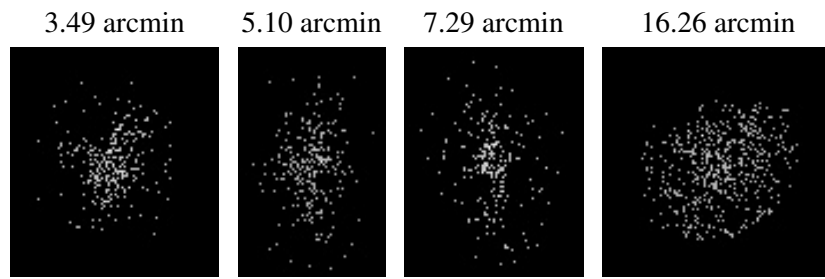
2.5.2 Slot 1



2.5.3 Slot 2



3 Point Sources



A Summary

A.1 Status

V&V Scientist	Beth Sundheim
V&V Date (YYYY-MM-DD)	2006.11.16
V&V Edition	1
V&V Disposition and Status	OK
V&V Charge Time	30.079

A.2 Comments