

V&V Reference Report

L2 ASCDS Version : 7.6.9

Observation 2209 - L2 Version 001
Chandra X-Ray Center

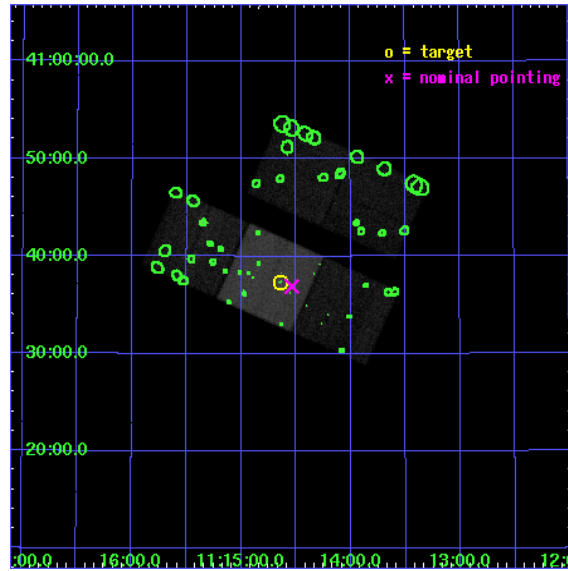
L2 Processing Date : Nov 15 2006

Contents

1	Front	2
2	OBI	3
2.1	OBI	3
2.1.1	Images	3
2.1.2	Bias	3
2.1.3	Parameters	4
2.1.4	Events	4
2.2	Compared Parameters	5
2.3	Aspect	6
2.4	Star Slots	9
2.4.1	Slot 3	9
2.4.2	Slot 4	10
2.4.3	Slot 5	11
2.4.4	Slot 6	12
2.4.5	Slot 7	13
2.5	FID Slots	14
2.5.1	Slot 0	14
2.5.2	Slot 1	15
2.5.3	Slot 2	16
3	Point Sources	17
A	Summary	18
A.1	Status	18
A.2	Comments	18

1 Front

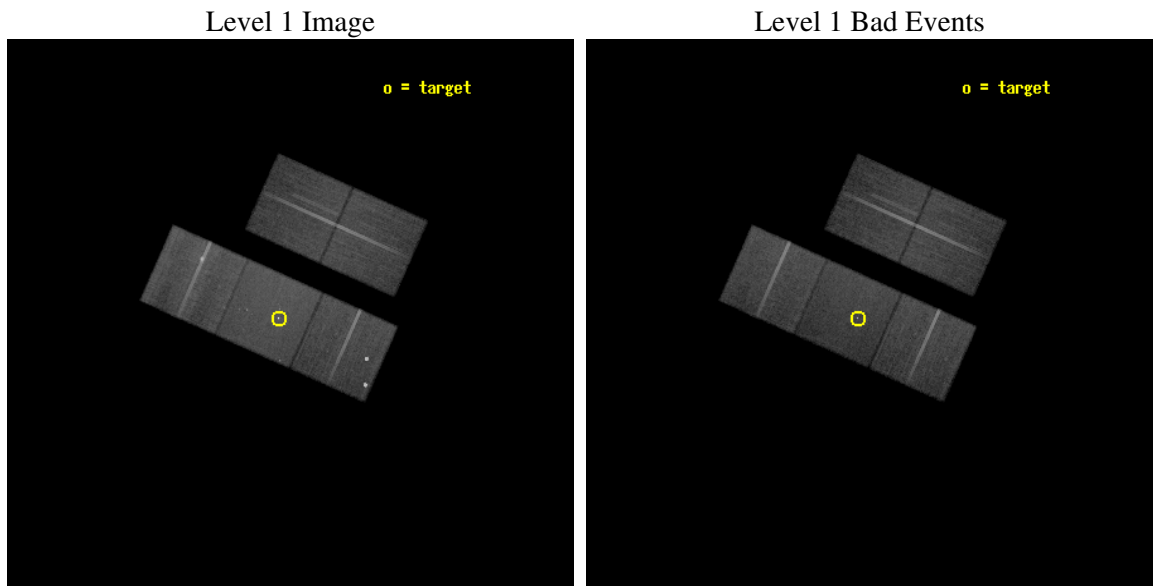
seq_num	800148
obs_id	2209
title	HIGH-REDSHIFT CLUSTERS AND CLASSICAL DOUBLES WITH CIGAR-SHAPED RADIO BRIDGES
observer	Dr. Megan Donahue
object	3C254
dtcycle	0
cycle	P
ra_targ	168.660417
dec_targ	40.622222
ra_nom	168.63443746592
dec_nom	40.615378644943
roll_nom	204.00741844792
revision	2
ontime	30060.699942201
livetime	29667.934767091
ontime2	30060.699942201
ontime3	30054.417961866
ontime6	30057.558971956
ontime7	30060.699942201
ontime8	30057.558971956
l2events	199774



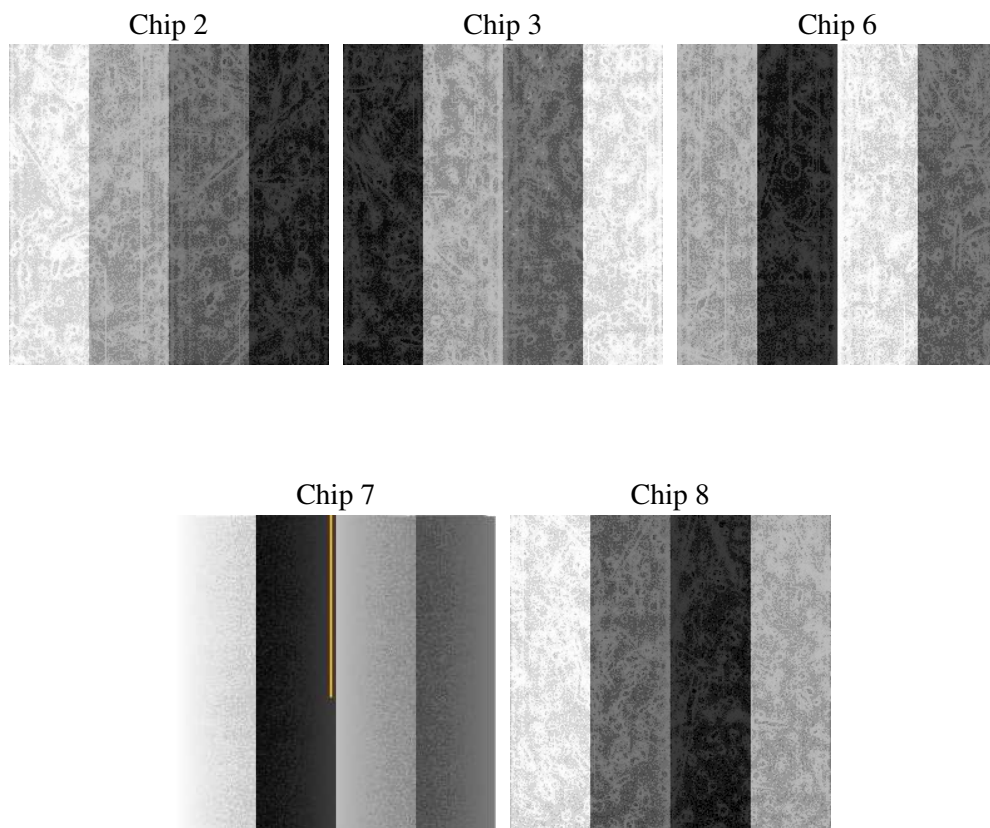
2 OBI

2.1 OBI

2.1.1 Images



2.1.2 Bias



2.1.3 Parameters

obi_num	0
ascdsver	7.6.9
caldbver	3.2.4
date	2006-11-16T00:02:36
revision	2

sched_exp_time	30000.000000
ontime	30065.681534991
ontime2	30068.82255508
ontime3	30059.399554655
ontime6	30062.540564746
ontime7	30065.681534991
ontime8	30062.540584683
l1events	1204815

2.1.4 Events

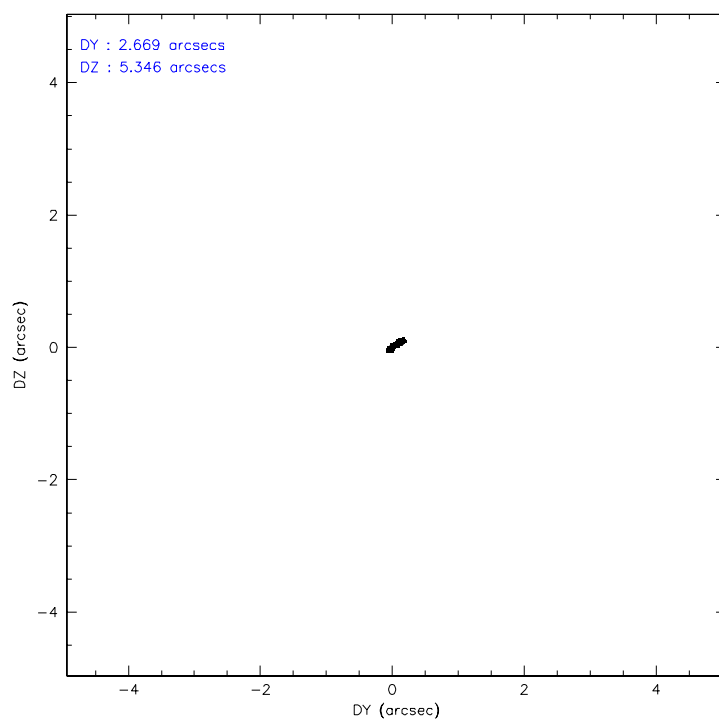
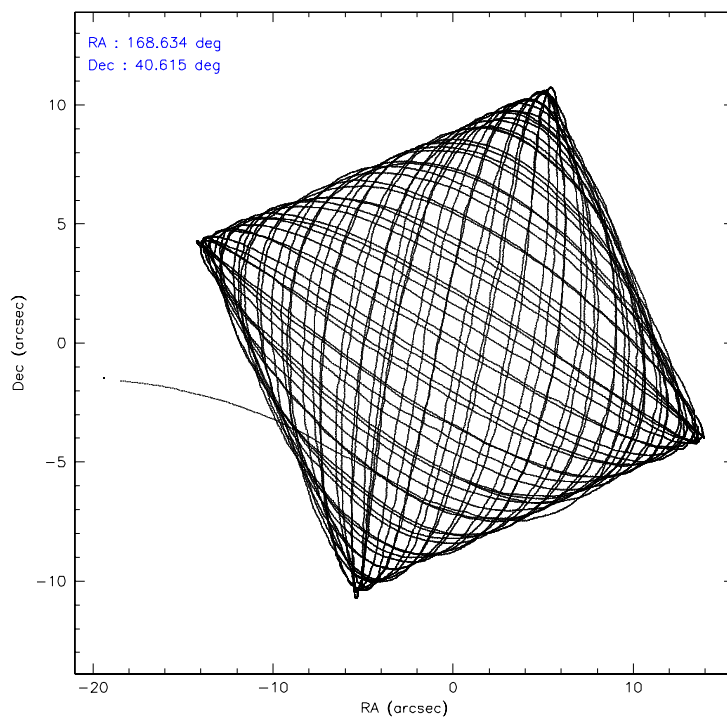
	ccd 2	ccd 3	ccd 6	ccd 7	ccd 8
level 1 events	210076	203541	235300	271011	284887
rejected events	185510	179270	191335	162852	210807
rejected %	88%	88%	81%	60%	73%

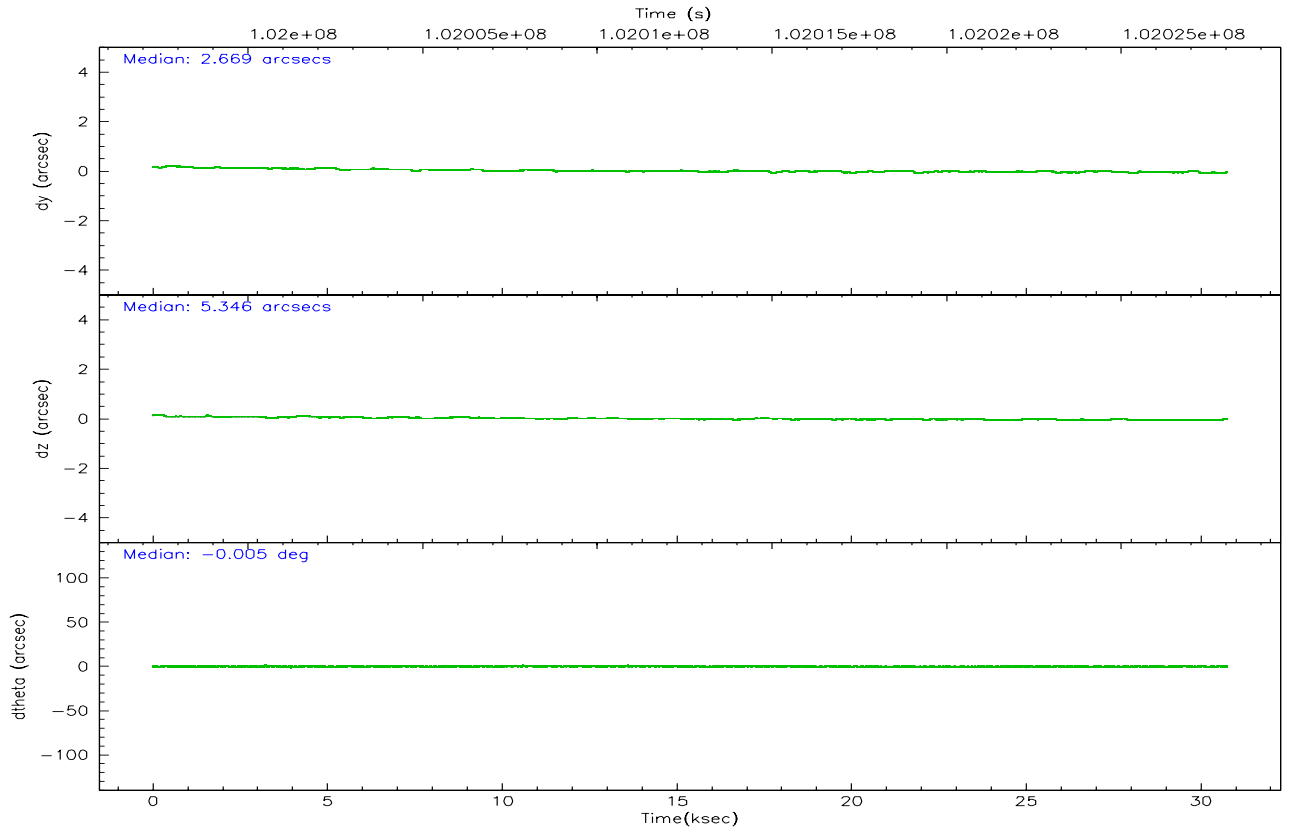
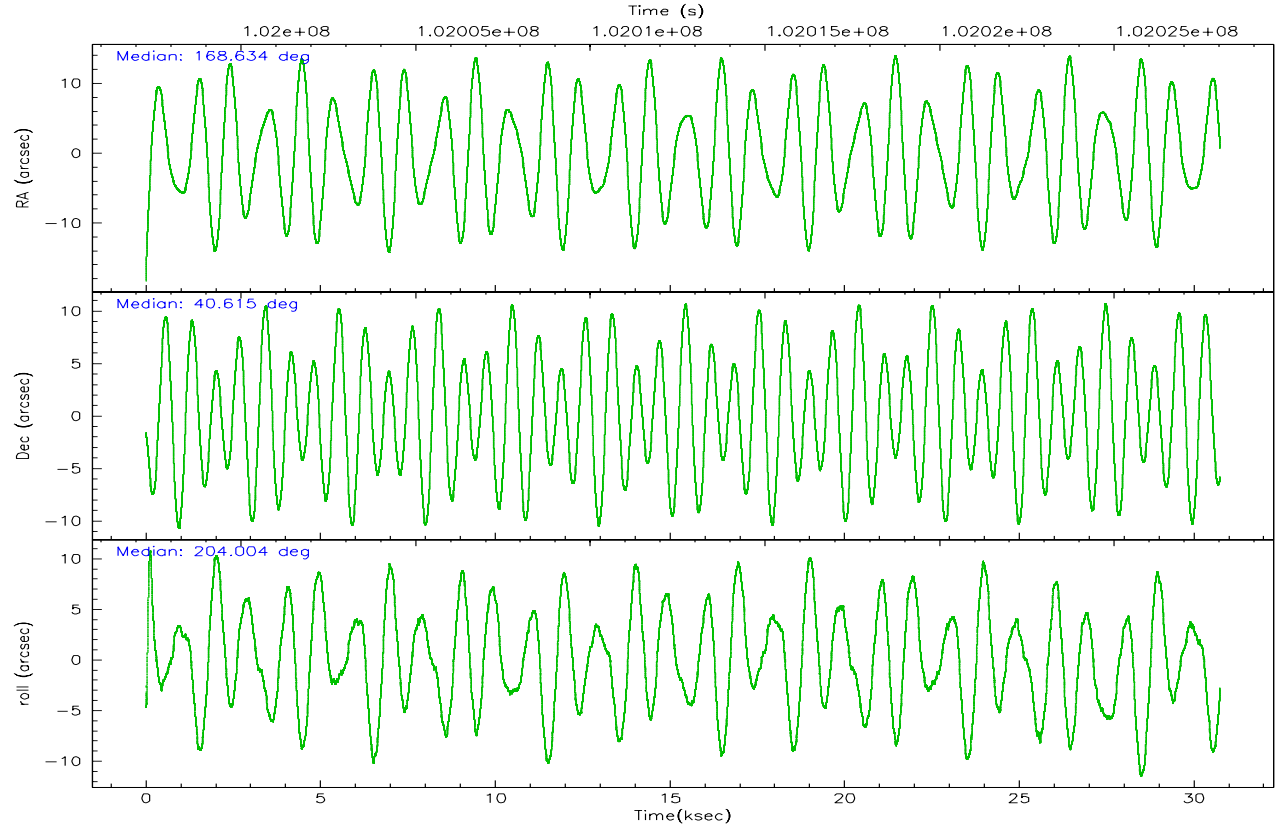
	ccd 2	ccd 3	ccd 6	ccd 7	ccd 8
grade 0 events	10496	10078	19599	8801	26955
	4%	4%	8%	3%	9%
grade 1 events	81	96	102	343	215
	0%	0%	0%	0%	0%
grade 2 events	5434	5231	14651	26396	13882
	2%	2%	6%	9%	4%
grade 3 events	2159	2195	2407	6358	8909
	1%	1%	1%	2%	3%
grade 4 events	2193	2255	2300	6196	8144
	1%	1%	0%	2%	2%
grade 5 events	6860	7483	8720	18163	11090
	3%	3%	3%	6%	3%
grade 6 events	4288	4512	5012	60416	16199
	2%	2%	2%	22%	5%
grade 7 events	178565	171691	182509	144338	199493
	85%	84%	77%	53%	70%

2.2 Compared Parameters

Parameter	Planned	Actual	Parameter	Planned	Actual
Instrument	ACIS	ACIS	Obspar format version number	6	6
Detector	ACIS-23678	ACIS-23678	Obspar file type	PREDICTED	ACTUAL
Grating	NONE	NONE	Obspar update status	NONE	UPDATED
Data mode	VFAINT	VFAINT	Number of optional ACIS chips dropped	0	0
Observation mode	POINTING	POINTING	On-chip summing requested	N	N
Pointing RA	168.655294	168.6344374659187	Subarray requested	NONE	NONE
Pointing Dec	40.637641	40.6153786449435	Alternating exposures requested	N	N
Pointing Roll	203.837219	204.0074184479191	Primary exposure time	0.000000	3.1
SIM focus pos (mm)	-0.684267	-0.6828225247311905			
SIM defocus (mm)	0	0.001444936568705701			
SIM translation stage pos (mm)	-190.132523	-190.1425803651734			
SIM translation stage offset (mm)	0	0.01005778216563158			
Observation start time	101998033.184000	101996794.67017			
Observation start date	2001-03-26T12:46:09	2001-03-26T12:26:34			
Observation end time	102028033.184000	102028417.97139			
Observation end date	2001-03-26T21:06:09	2001-03-26T21:13:37			
Read mode	TIMED	TIMED			

2.3 Aspect



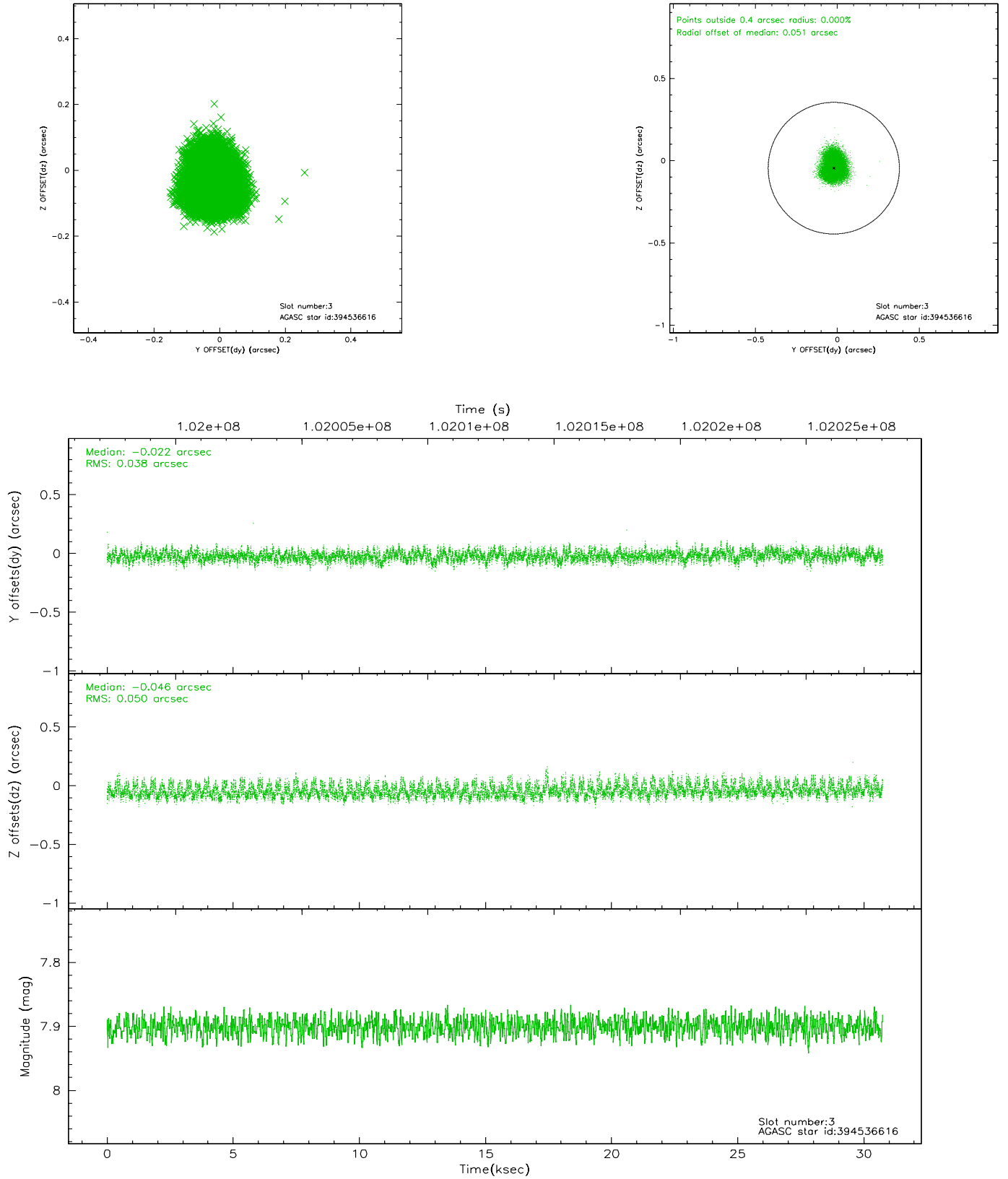


Slot Statistics

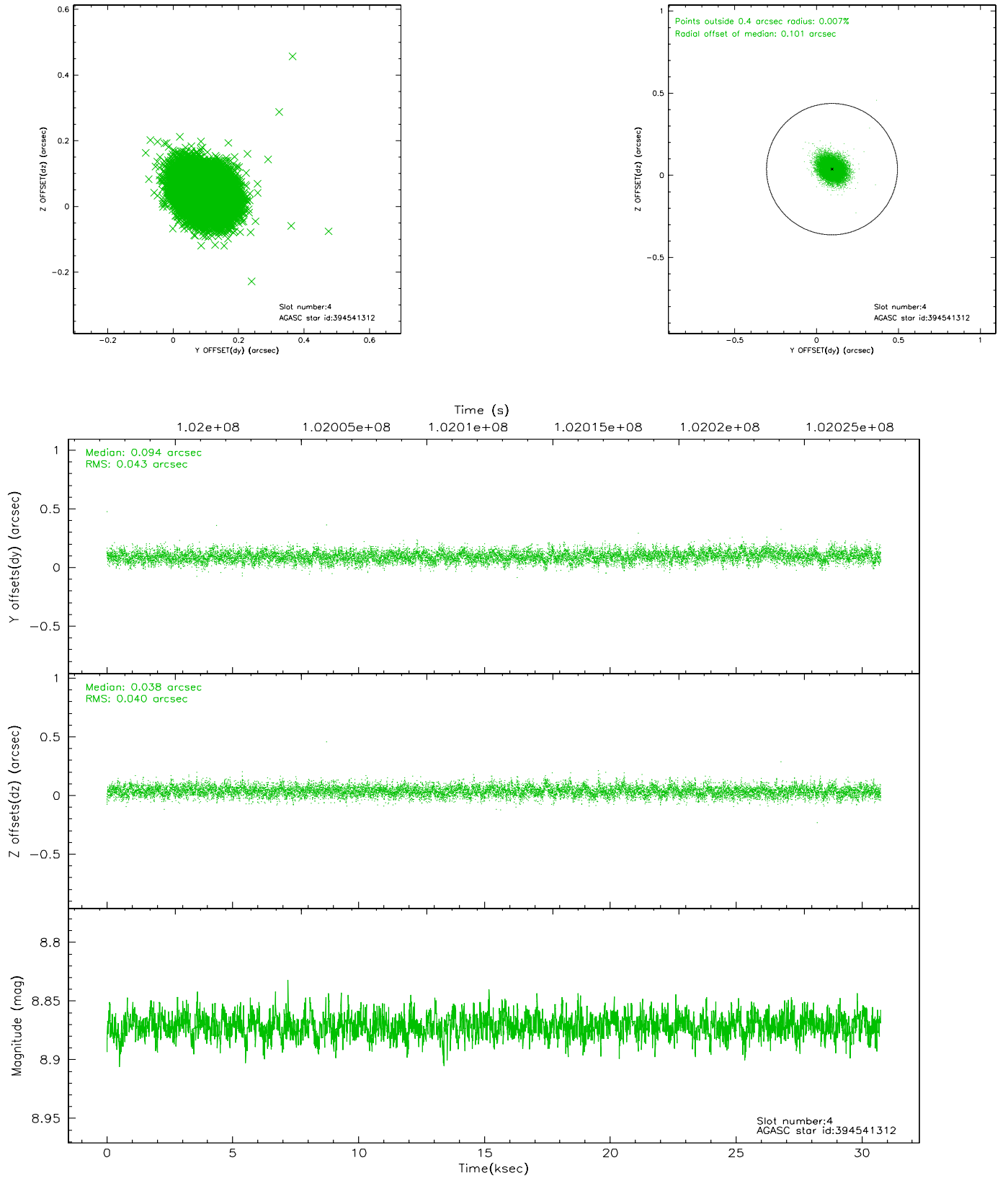
slot	status	id	mag	n_pts	med_dy	med_dz	dr1	dr2	ra	dec	mean_y	mean_z
0	FID	ACIS-S-2	7.12	7498	-0.019	0.026	0.012	0.020	0.000000	0.000000	-755.30	-1726.42
1	FID	ACIS-S-4	7.20	7499	-0.082	0.002	0.017	0.030	0.000000	0.000000	2157.85	182.04
2	FID	ACIS-S-5	7.24	7500	0.065	-0.018	0.011	0.018	0.000000	0.000000	-1808.02	175.67
3	GUIDE	394536616	7.90	15000	-0.022	-0.046	0.068	0.106	168.478245	39.977764	1406.82	1974.98
4	GUIDE	394541312	8.87	14994	0.094	0.038	0.062	0.102	168.142879	40.534286	1431.27	-229.90
5	GUIDE	394540984	9.08	14999	-0.014	0.050	0.077	0.125	169.035193	40.529906	-795.00	772.68
6	GUIDE	394534584	9.38	14994	-0.084	0.003	0.087	0.141	169.479815	40.837337	-2349.17	240.14
7	GUIDE	394536664	9.50	14995	0.023	-0.048	0.087	0.150	167.975457	40.752410	1525.81	-1133.87

2.4 Star Slots

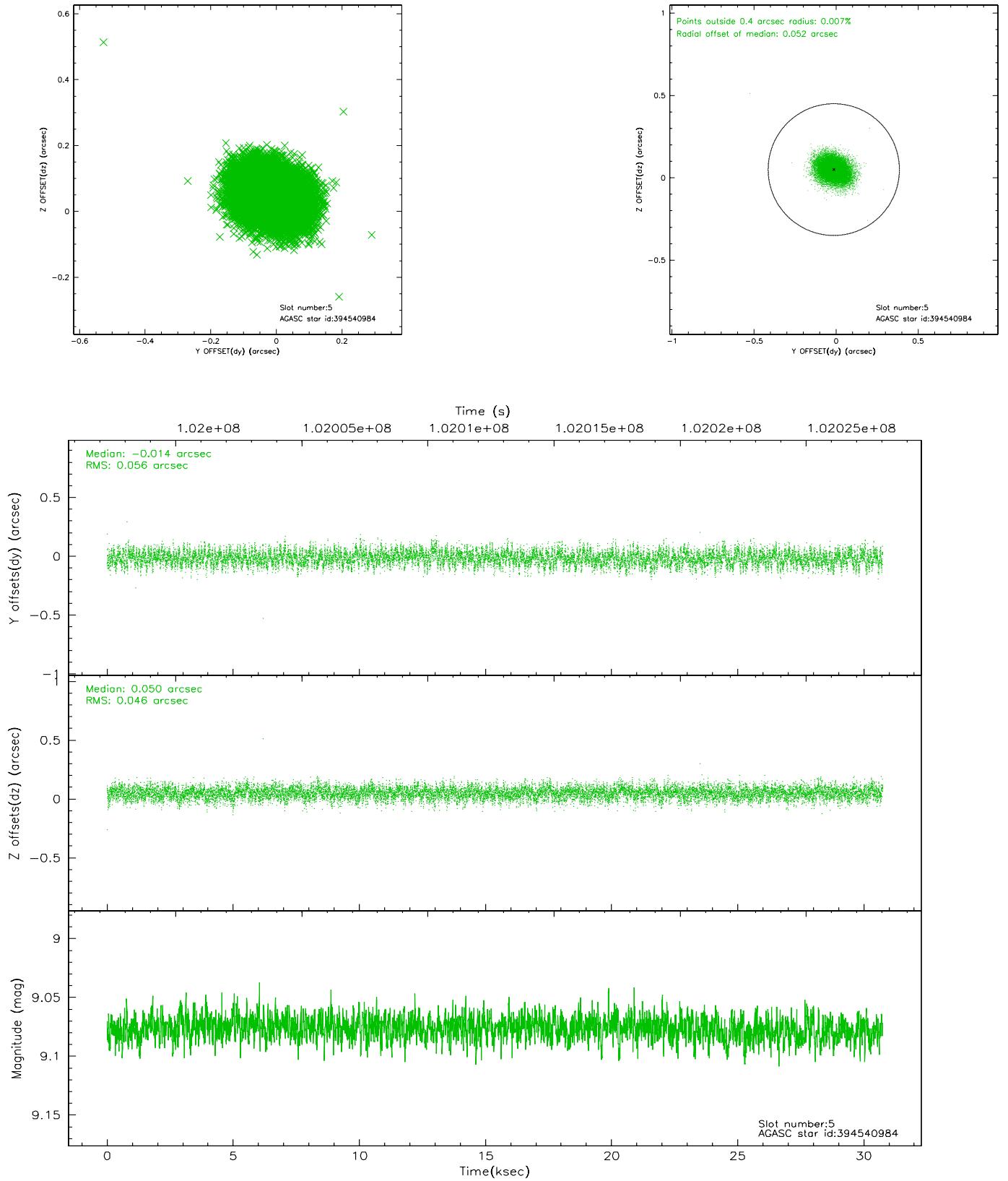
2.4.1 Slot 3



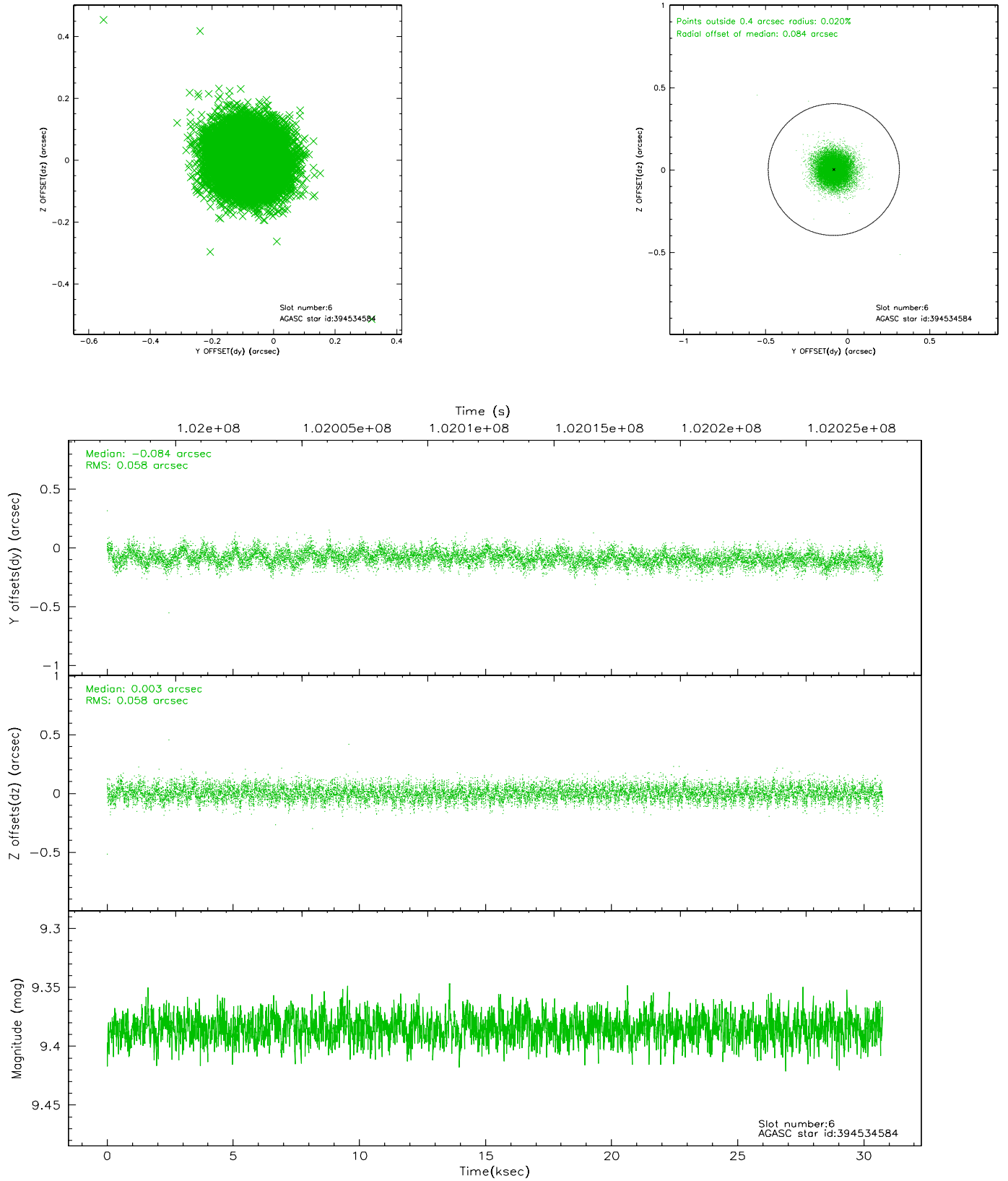
2.4.2 Slot 4



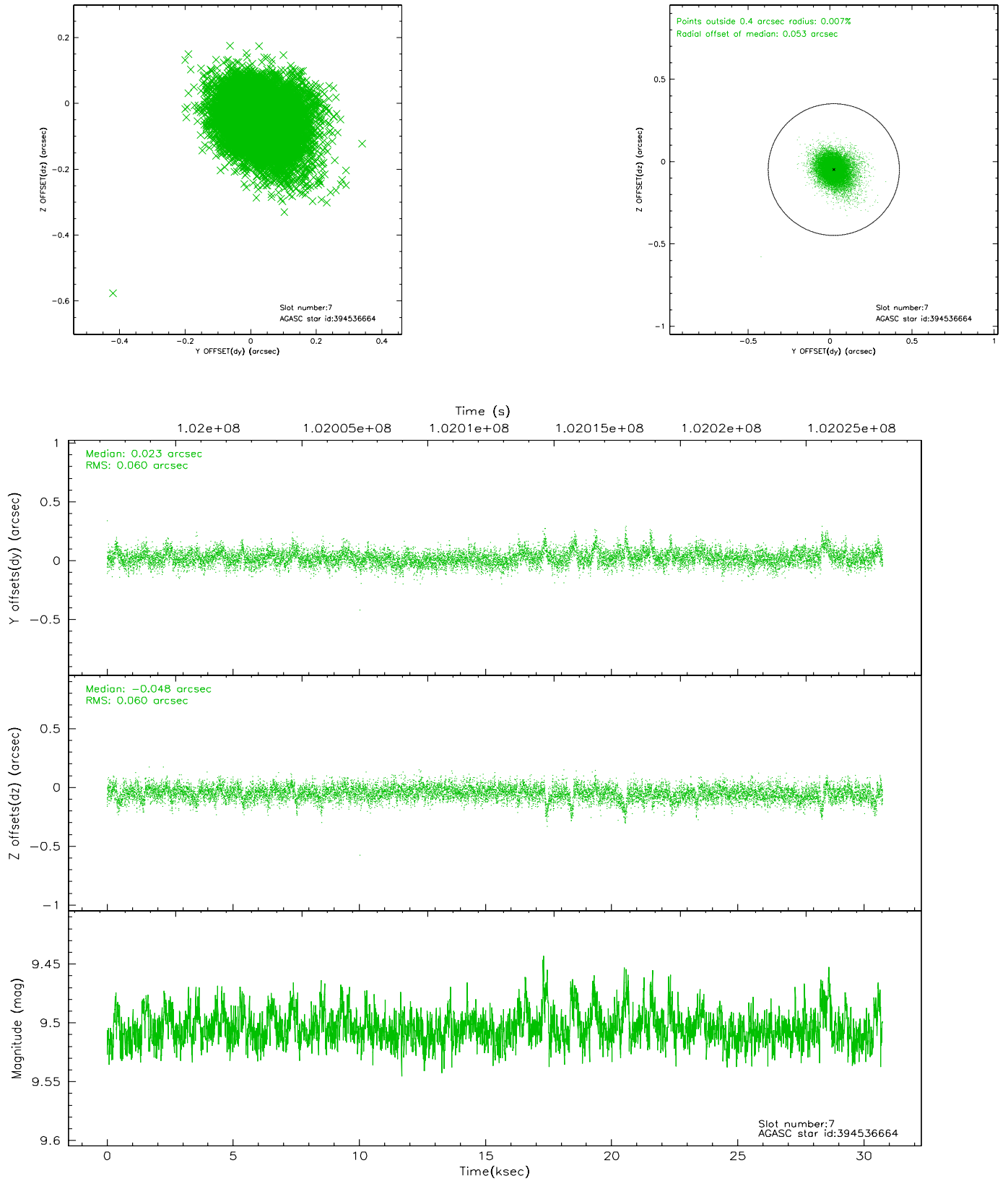
2.4.3 Slot 5



2.4.4 Slot 6

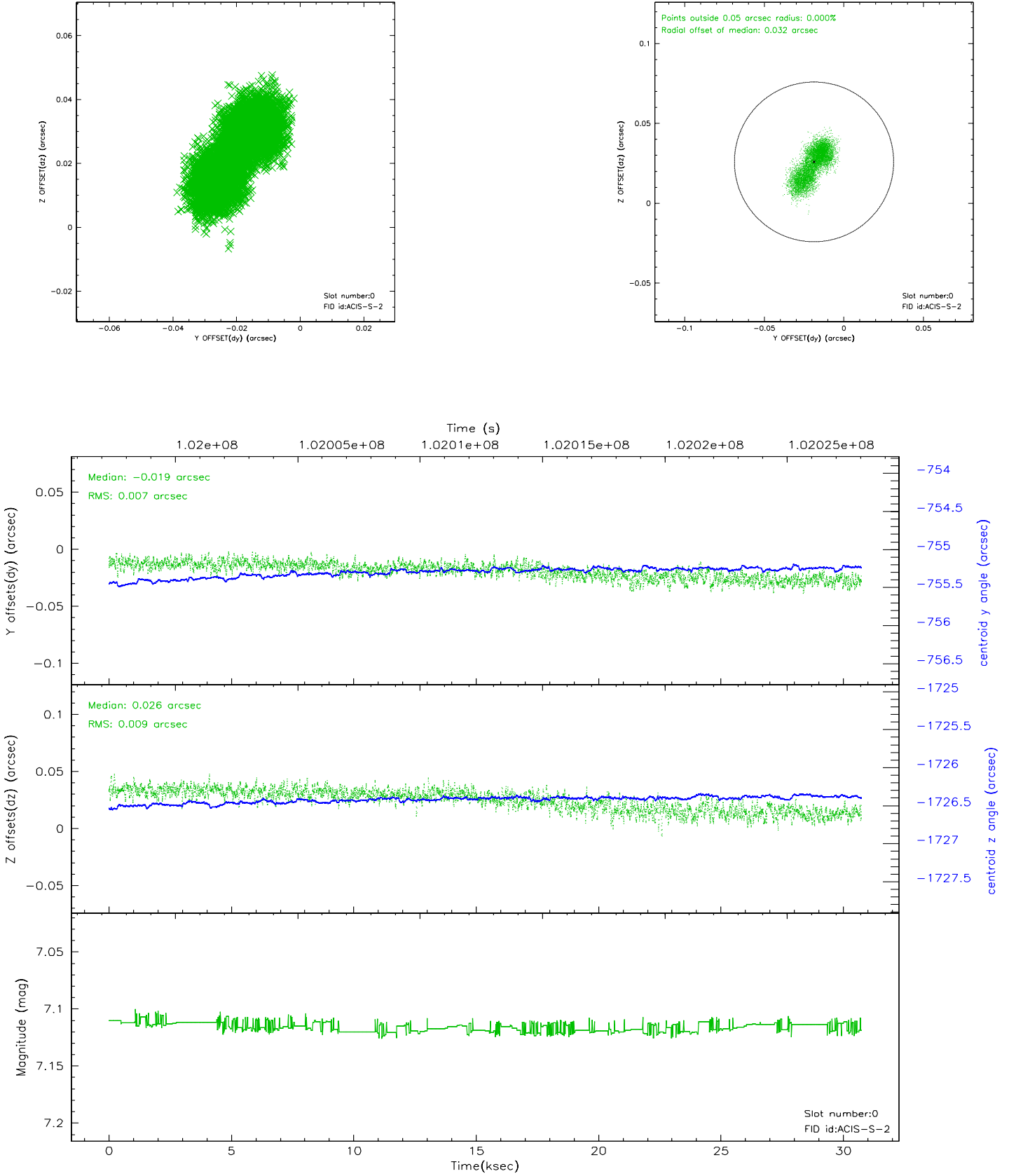


2.4.5 Slot 7

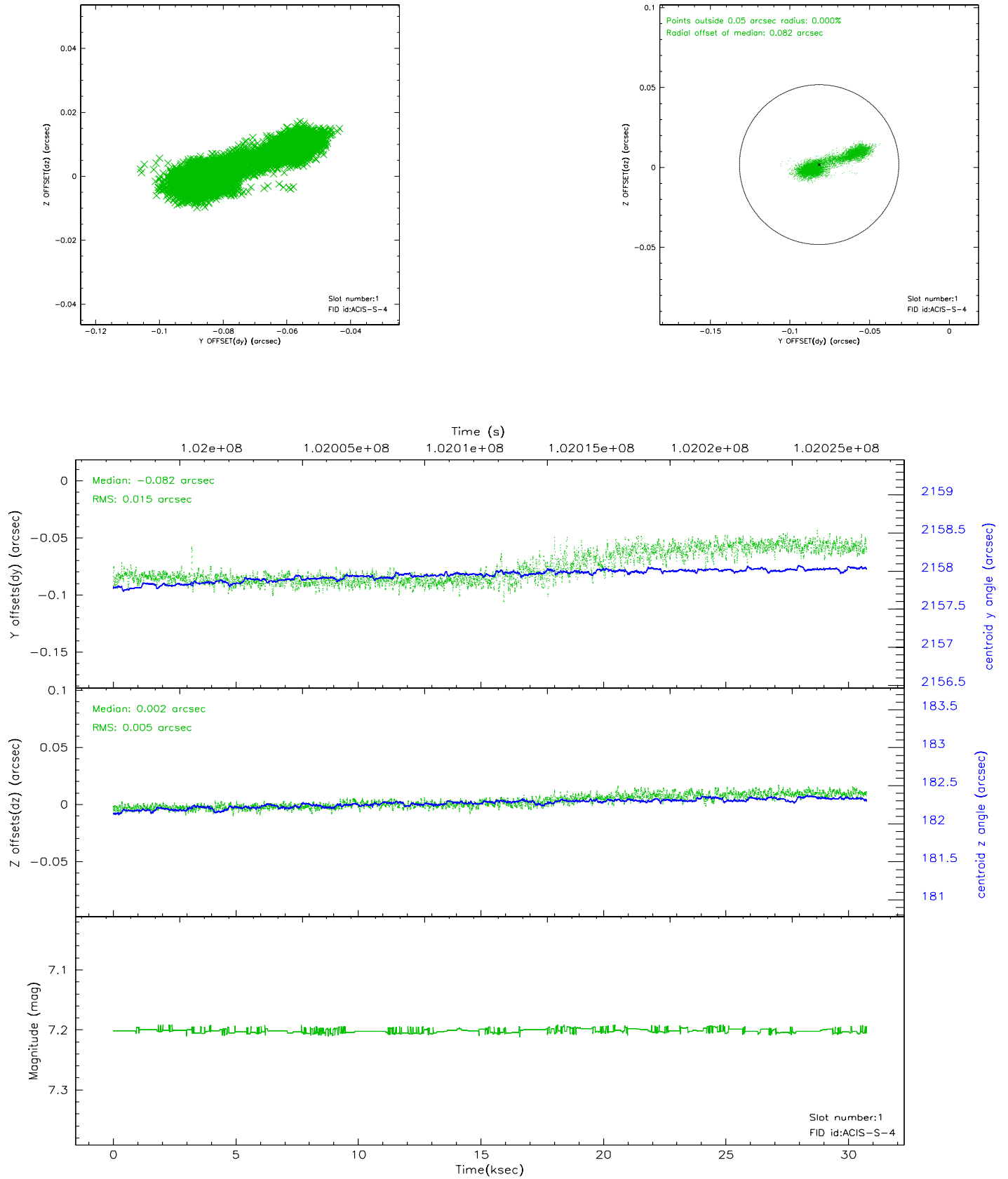


2.5 FID Slots

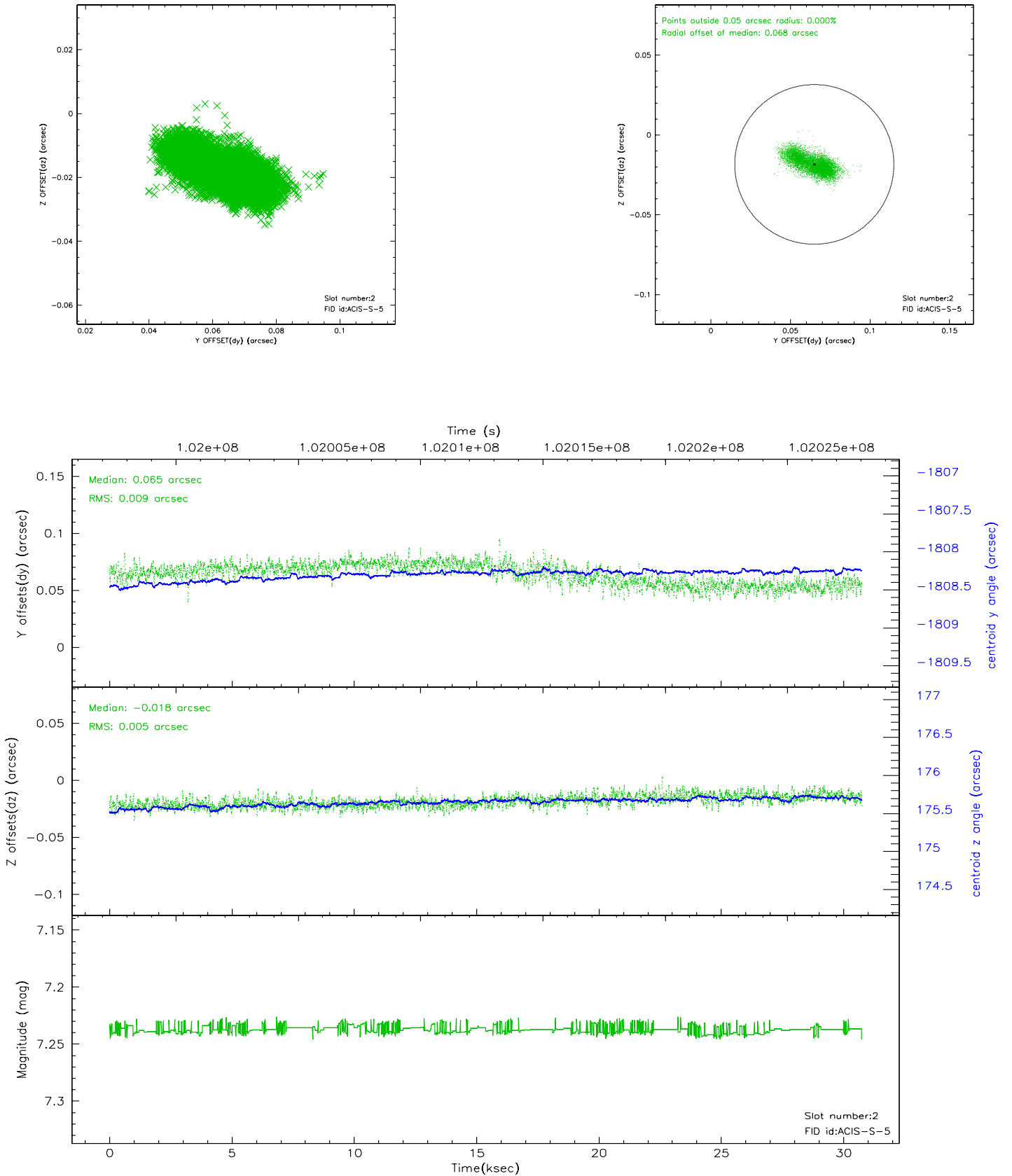
2.5.1 Slot 0



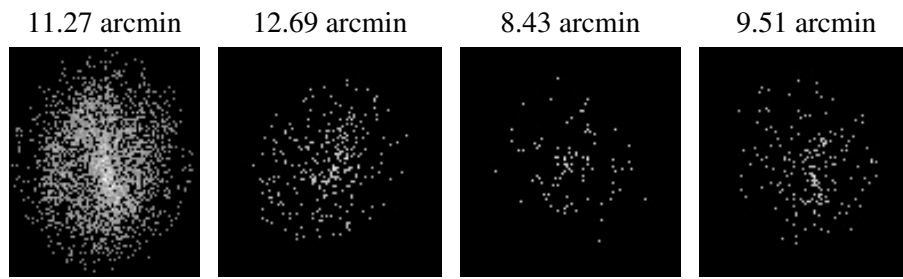
2.5.2 Slot 1



2.5.3 Slot 2



3 Point Sources



A Summary

A.1 Status

V&V Scientist	Beth Sundheim
V&V Date (YYYY-MM-DD)	2006.11.16
V&V Edition	1
V&V Disposition and Status	OK
V&V Charge Time	30.06

A.2 Comments