

# V&V Reference Report

## L2 ASCDS Version : 7.6.10

Observation 2203 - L2 Version 001  
Chandra X-Ray Center

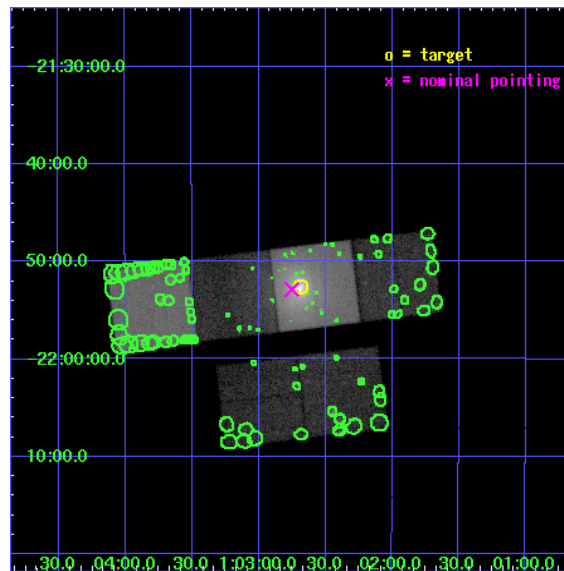
L2 Processing Date : Jun 12 2007

## Contents

<b>1</b>	<b>Front</b>	<b>2</b>
<b>2</b>	<b>OBI</b>	<b>3</b>
2.1	OBI . . . . .	3
2.1.1	Images . . . . .	3
2.1.2	Bias . . . . .	3
2.1.3	Parameters . . . . .	4
2.1.4	Events . . . . .	4
2.2	Compared Parameters . . . . .	5
2.3	Aspect . . . . .	6
2.4	Star Slots . . . . .	9
2.4.1	Slot 3 . . . . .	9
2.4.2	Slot 4 . . . . .	10
2.4.3	Slot 5 . . . . .	11
2.4.4	Slot 6 . . . . .	12
2.4.5	Slot 7 . . . . .	13
2.5	FID Slots . . . . .	14
2.5.1	Slot 0 . . . . .	14
2.5.2	Slot 1 . . . . .	15
2.5.3	Slot 2 . . . . .	16
<b>3</b>	<b>Point Sources</b>	<b>17</b>
<b>A</b>	<b>Summary</b>	<b>18</b>
A.1	Status . . . . .	18
A.2	Comments . . . . .	18

# 1 Front

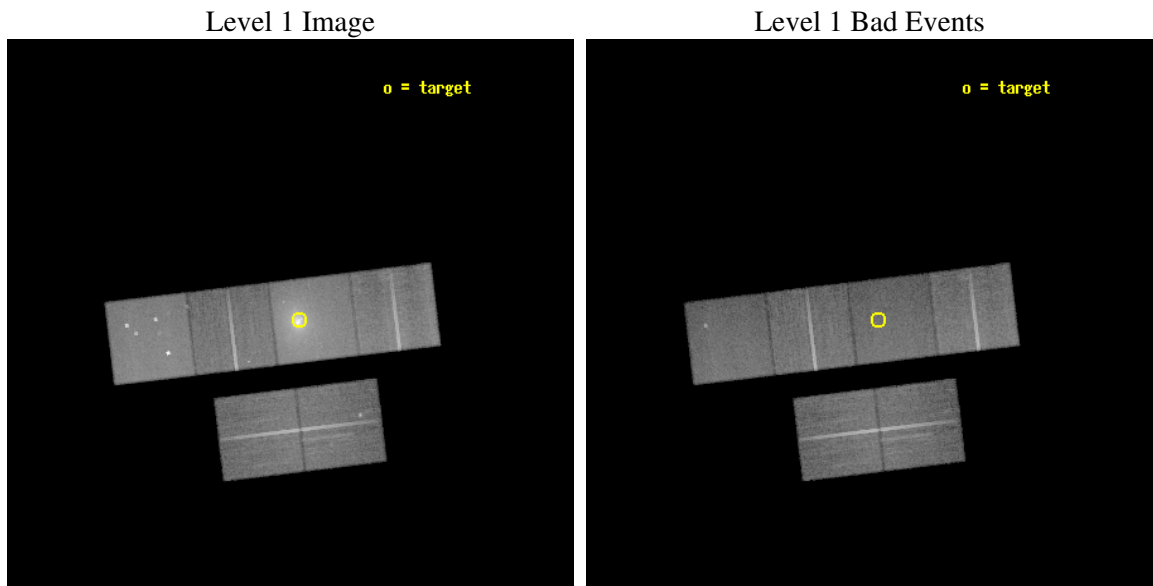
seq_num	800142
obs_id	2203
title	FILAMENTARY RADIO RELICS AND MERGERS IN CLUSTERS OF GALAXIES
observer	Dr. Craig Sarazin
object	A133
dtcycle	0
cycle	P
ra_targ	15.672083
dec_targ	-21.877778
ra_nom	15.687963002016
dec_nom	-21.881364056319
roll_nom	353.13511722867
revision	2
ontime	35913.600033447
livetime	35458.84040525
ontime2	35913.600033447
ontime3	35913.600033447
ontime5	35913.600033447
ontime6	35913.600033447
ontime7	35913.600033447
ontime8	35913.600033447
l2events	504328



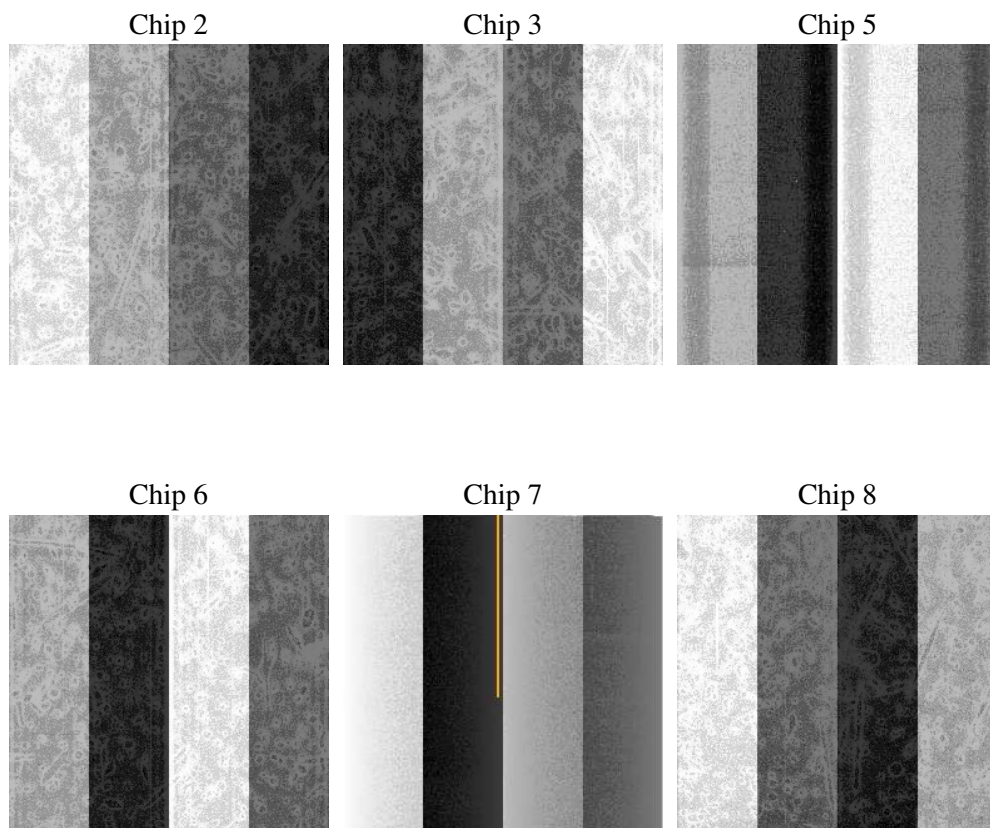
## 2 OBI

### 2.1 OBI

#### 2.1.1 Images



#### 2.1.2 Bias



### 2.1.3 Parameters

obi_num	0
ascdsver	7.6.10
caldsver	3.4.0
date	2007-06-12T08:30:50
revision	2

sched_exp_time	36000.000000
ontime	35913.600033447
ontime2	35913.600033447
ontime3	35913.600033447
ontime5	35913.600033447
ontime6	35913.600033447
ontime7	35913.600033447
ontime8	35913.600033447
l1events	1682229

### 2.1.4 Events

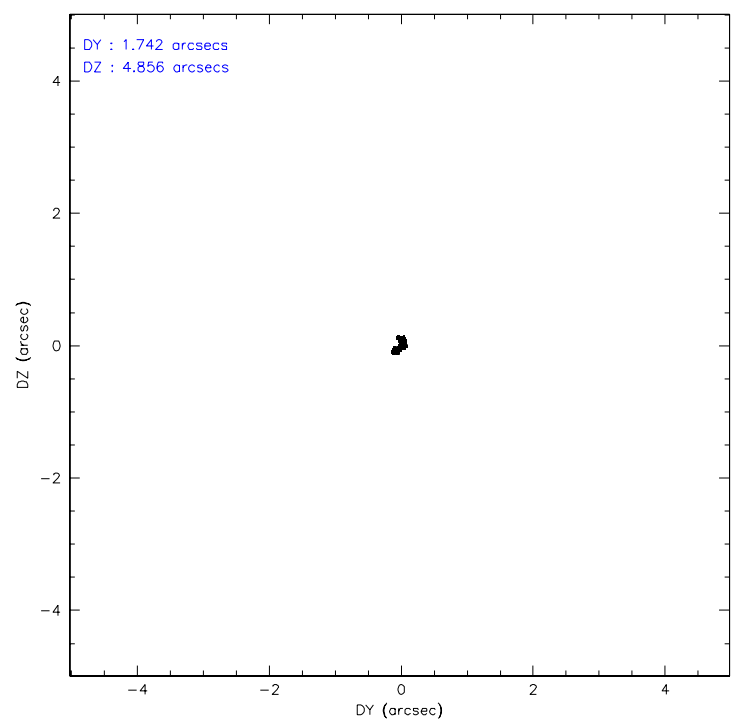
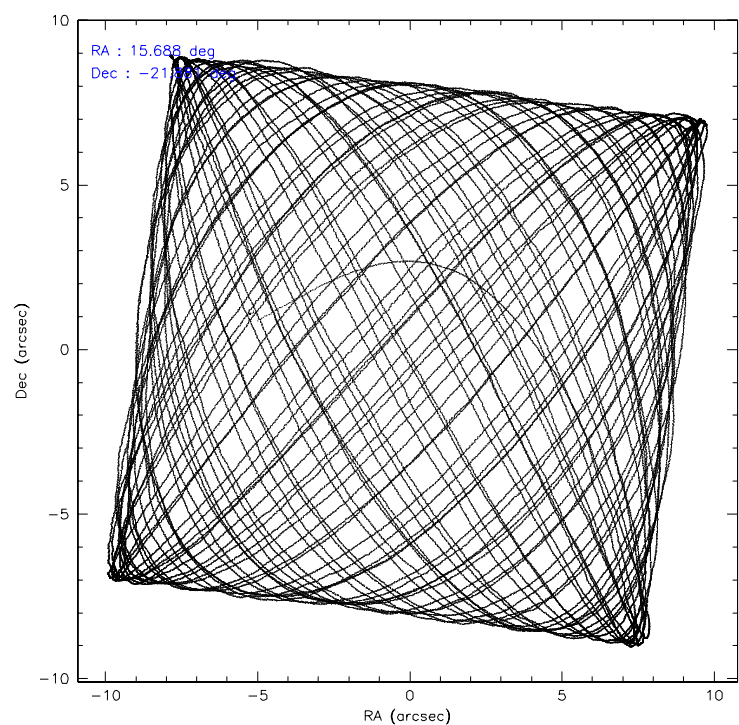
	ccd 2	ccd 3	ccd 5	ccd 6	ccd 7	ccd 8
level 1 events	222461	213256	312905	230849	427553	275205
rejected events	197219	185219	160882	195587	158016	218886
rejected %	88%	86%	51%	84%	36%	79%

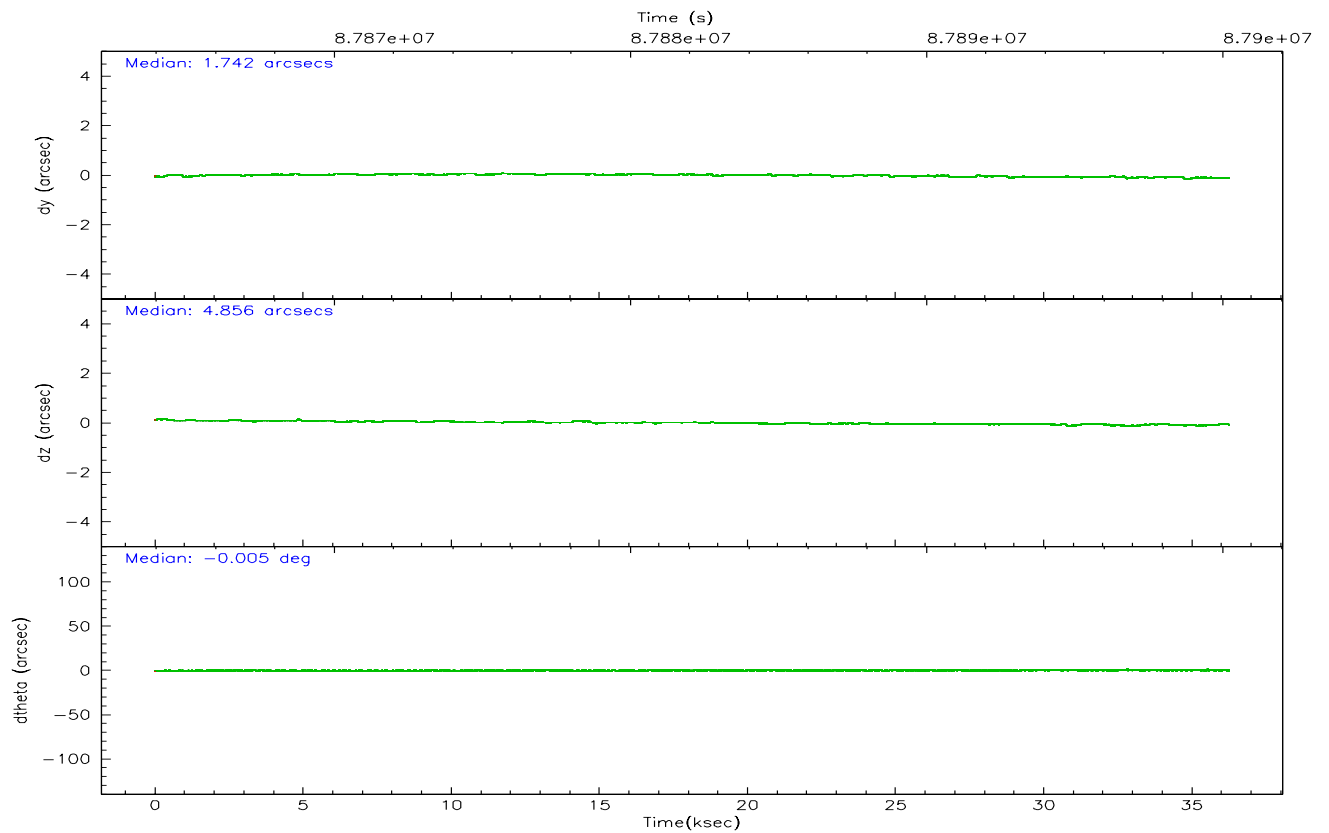
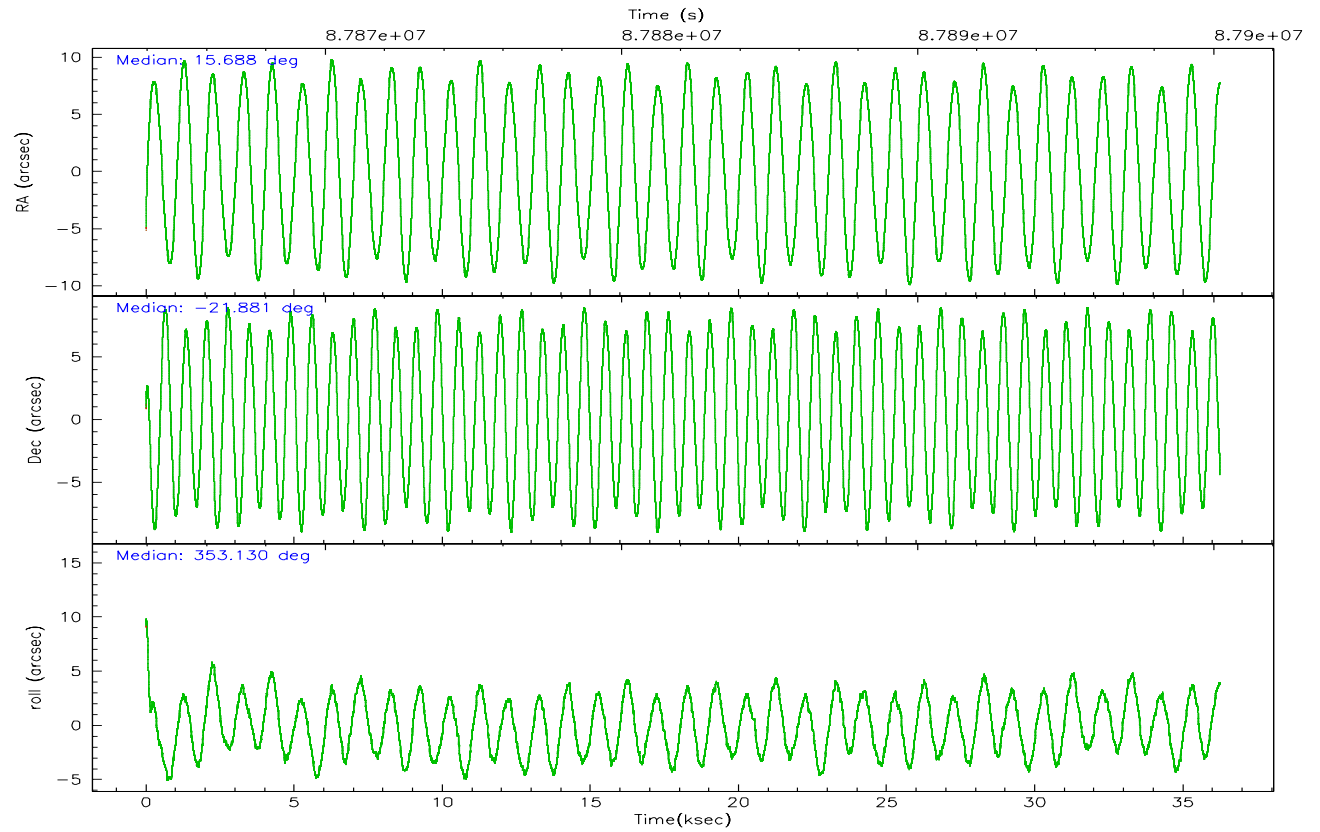
	ccd 2	ccd 3	ccd 5	ccd 6	ccd 7	ccd 8
grade 0 events	11293	13930	27543	18895	63242	19780
	5%	6%	8%	8%	14%	7%
grade 1 events	103	101	1057	110	251	152
	0%	0%	0%	0%	0%	0%
grade 2 events	5246	5080	40014	5833	61817	11544
	2%	2%	12%	2%	14%	4%
grade 3 events	2203	2380	6608	2783	28287	5921
	0%	1%	2%	1%	6%	2%
grade 4 events	2257	2418	6285	2792	27856	5478
	1%	1%	2%	1%	6%	1%
grade 5 events	7174	7767	22843	8970	26669	11077
	3%	3%	7%	3%	6%	4%
grade 6 events	4247	4232	71588	4962	88362	13636
	1%	1%	22%	2%	20%	4%
grade 7 events	189938	177348	136967	186504	131069	207617
	85%	83%	43%	80%	30%	75%

## 2.2 Compared Parameters

Parameter	Planned	Actual	Parameter	Planned	Actual
Instrument	ACIS	ACIS	Obspar format version number	6	6
Detector	ACIS-235678	ACIS-235678	Obspar file type	PREDICTED	ACTUAL
Grating	NONE	NONE	Obspar update status	NONE	UPDATED
Data mode	FAINT	FAINT	Number of optional ACIS chips dropped	0	0
Observation mode	POINTING	POINTING	On-chip summing requested	N	N
Pointing RA	15.660923	15.68796300201568	Subarray requested	NONE	NONE
Pointing Dec	-21.892286	-21.88136405631855	Alternating exposures requested	N	N
Pointing Roll	352.968412	353.1351172286671	Primary exposure time	0.000000	3.2
SIM focus pos (mm)	-0.684267	-0.6828225247311905			
SIM defocus (mm)	0	0.001444936568705701			
SIM translation stage pos (mm)	-190.132523	-190.1400660498719			
SIM translation stage offset (mm)	0	0.00754346686406393			
Observation start time	87864214.184000	87863222.87876			
Observation start date	2000-10-13T22:42:30	2000-10-13T22:27:02			
Observation end time	87900214.184000	87900810.65518001			
Observation end date	2000-10-14T08:42:30	2000-10-14T08:53:30			
Read mode	TIMED	TIMED			

## 2.3 Aspect





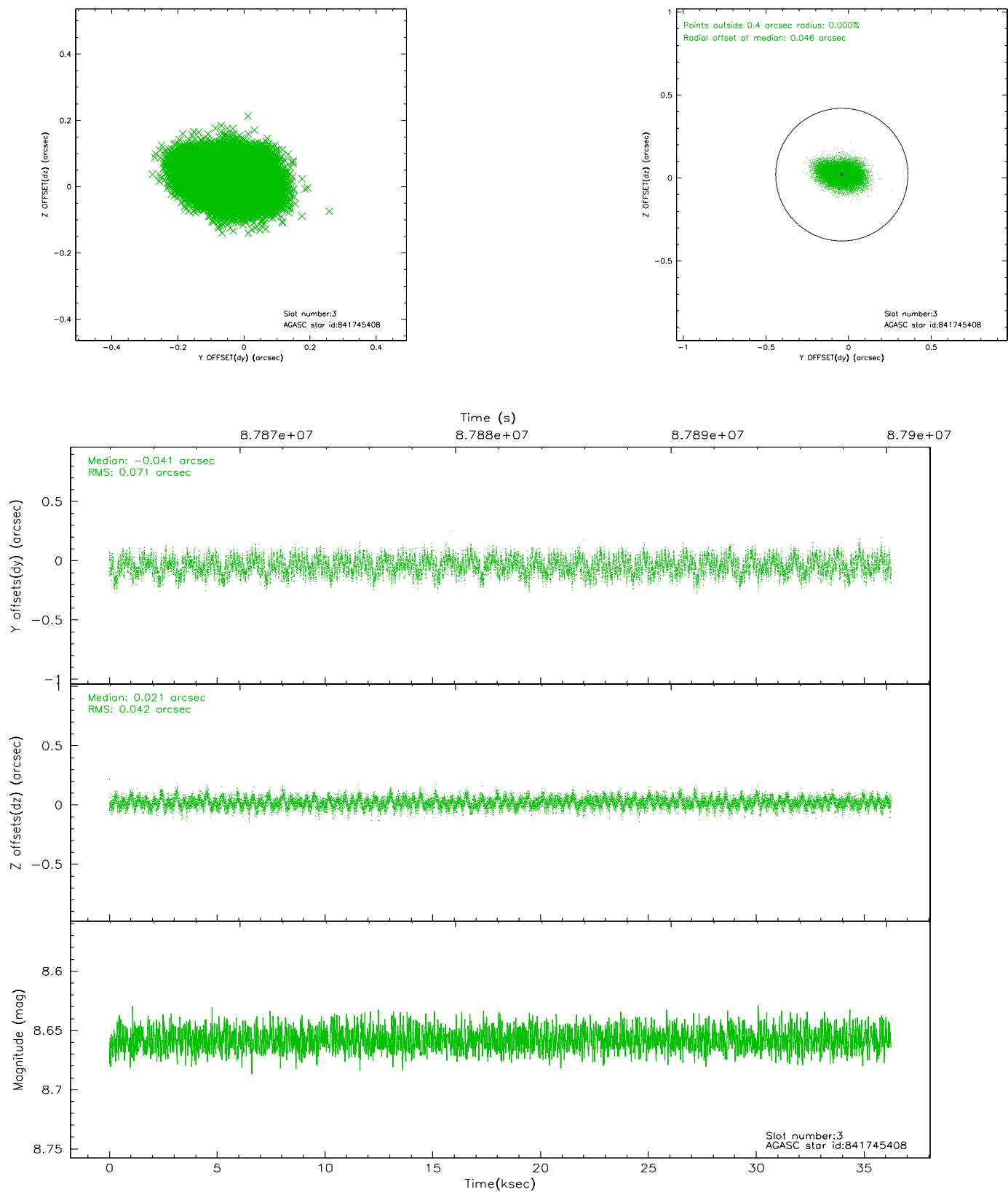
### Slot Statistics

slot	status	id	mag	n_pts	med_dy	med_dz	dr1	dr2	ra	dec	mean_y	mean_z
0	FID	ACIS-S-2	7.11	8844	-0.031	0.015	0.007	0.011	0.000000	0.000000	-754.35	-1725.96
1	FID	ACIS-S-4	7.20	8844	-0.052	0.011	0.005	0.009	0.000000	0.000000	2158.87	182.52
2	FID	ACIS-S-5	7.24	8844	0.051	-0.017	0.006	0.010	0.000000	0.000000	-1807.09	176.15
3	GUIDE	841745408	8.66	17685	-0.041	0.021	0.089	0.143	16.162435	-22.504118	1926.02	-1984.45
4	GUIDE	766783464	9.19	17684	-0.005	-0.029	0.084	0.133	15.041422	-22.197983	-1913.54	-1349.53
5	GUIDE	767171936	10.15	17676	0.042	0.020	0.150	0.245	16.105335	-22.483256	1728.45	-1932.64
6	GUIDE	766779344	10.05	17616	0.037	0.018	0.130	0.206	15.380905	-21.452302	-1124.60	1456.11
7	GUIDE	767171568	9.97	17673	-0.027	-0.031	0.136	0.216	16.035890	-22.108834	1337.22	-622.00

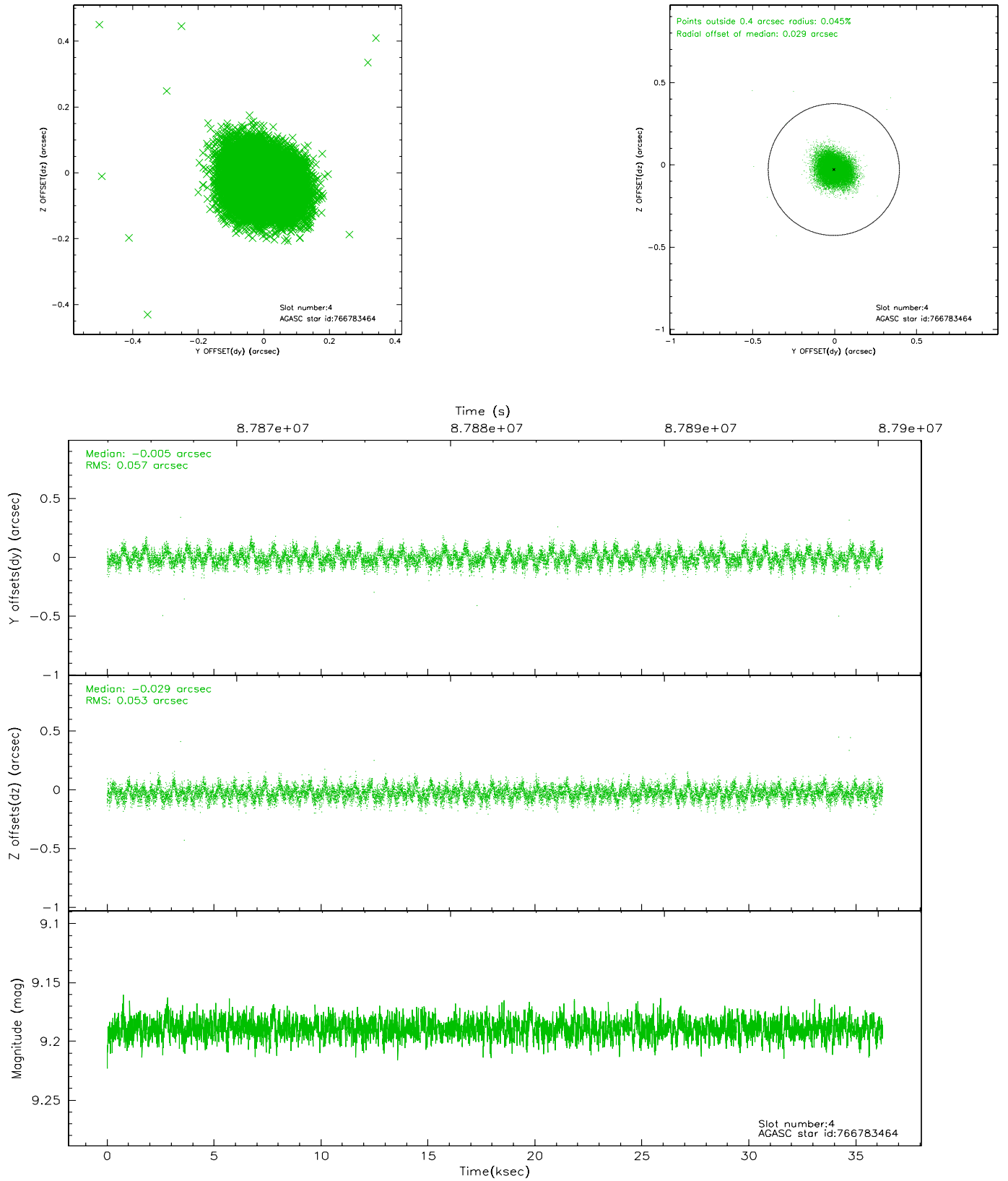


## 2.4 Star Slots

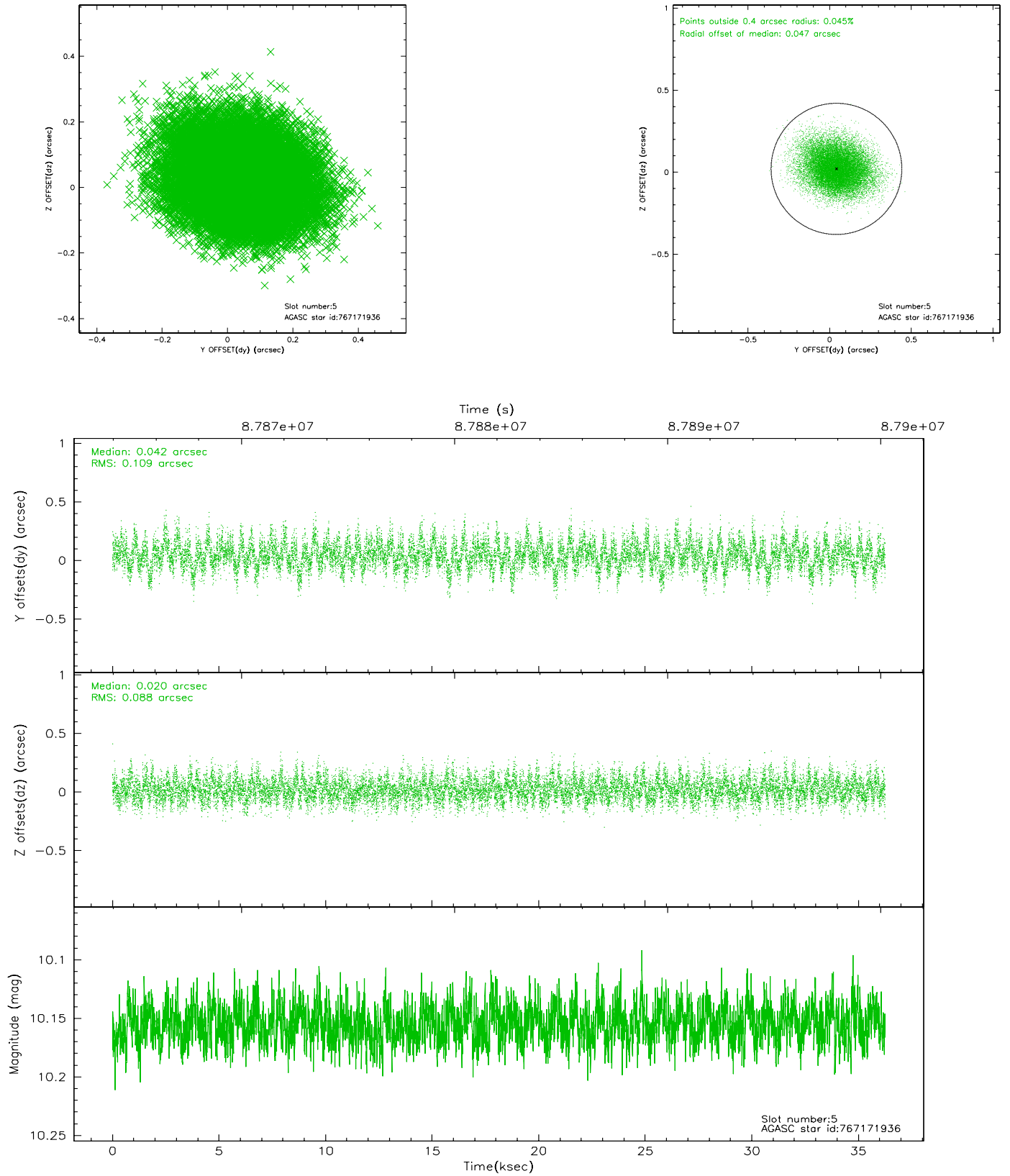
### 2.4.1 Slot 3



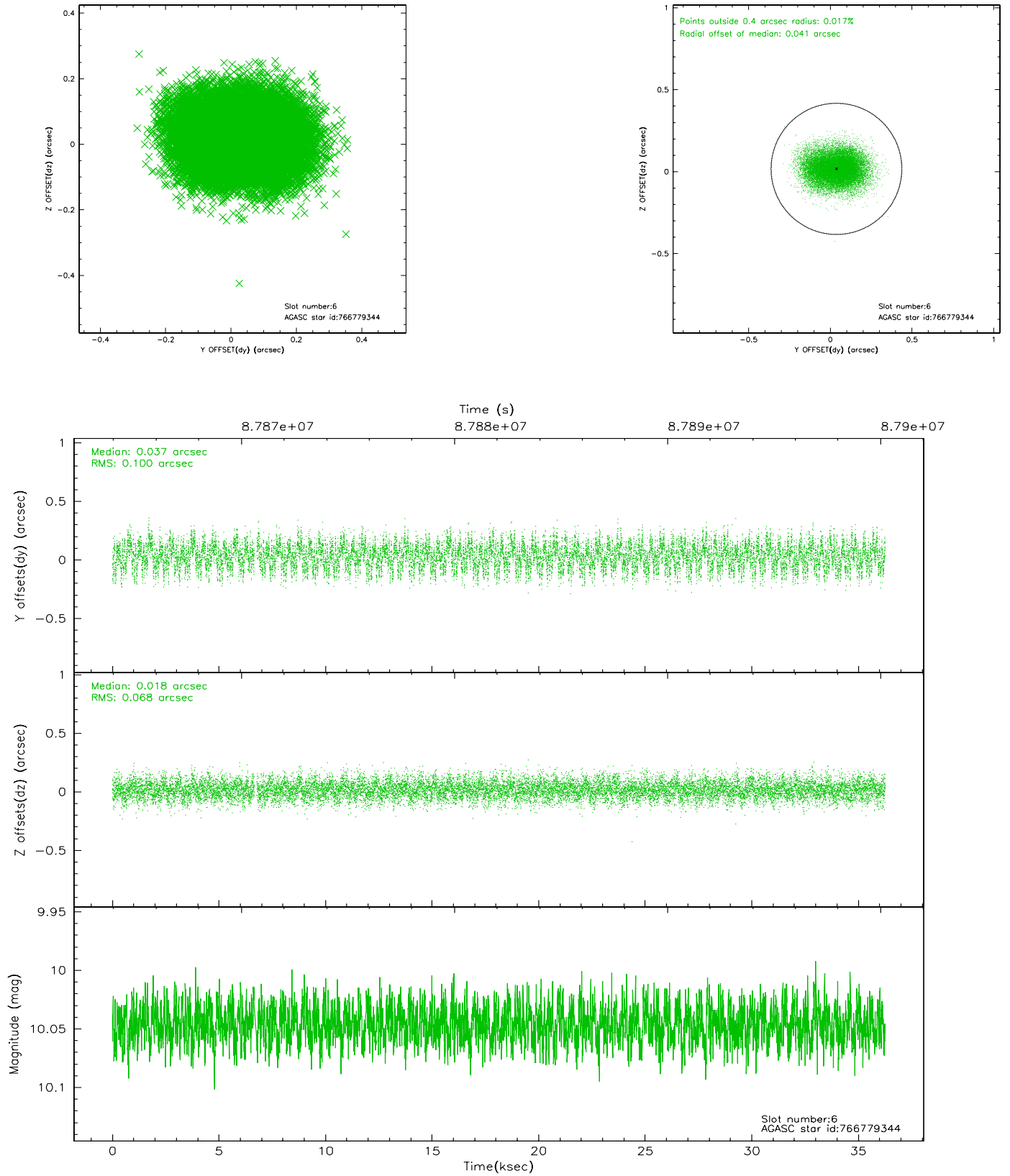
## 2.4.2 Slot 4



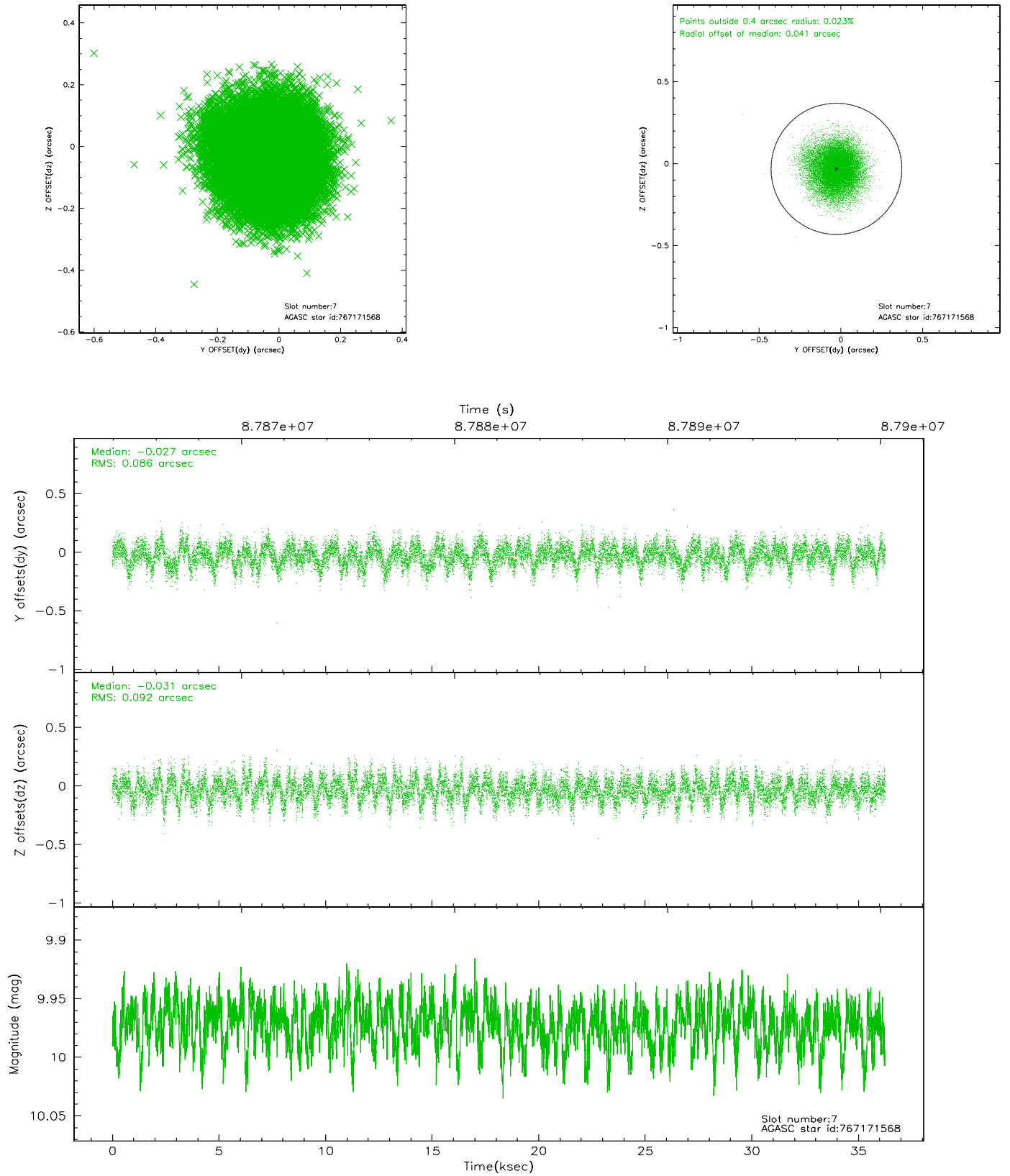
### 2.4.3 Slot 5



## 2.4.4 Slot 6

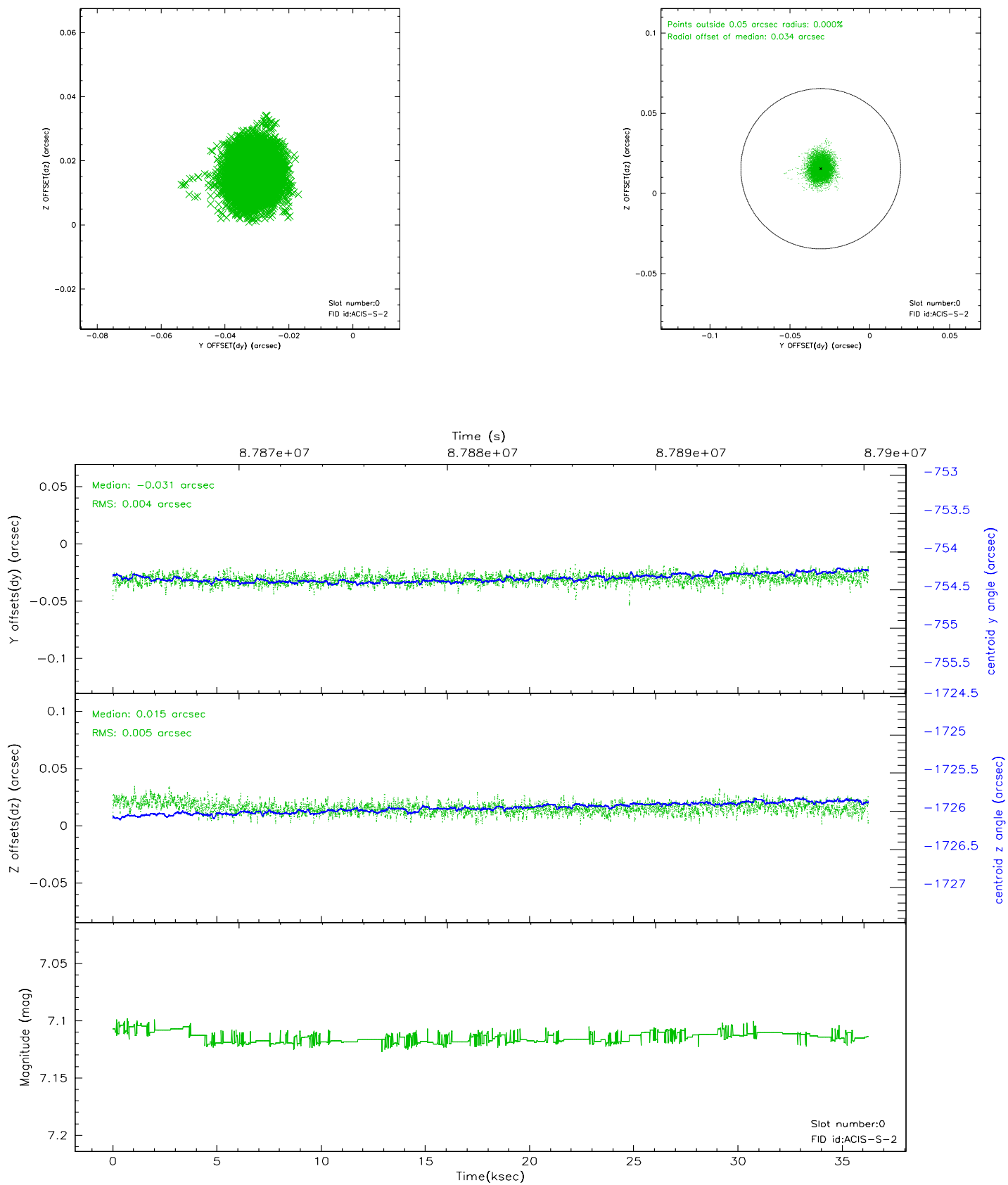


## 2.4.5 Slot 7

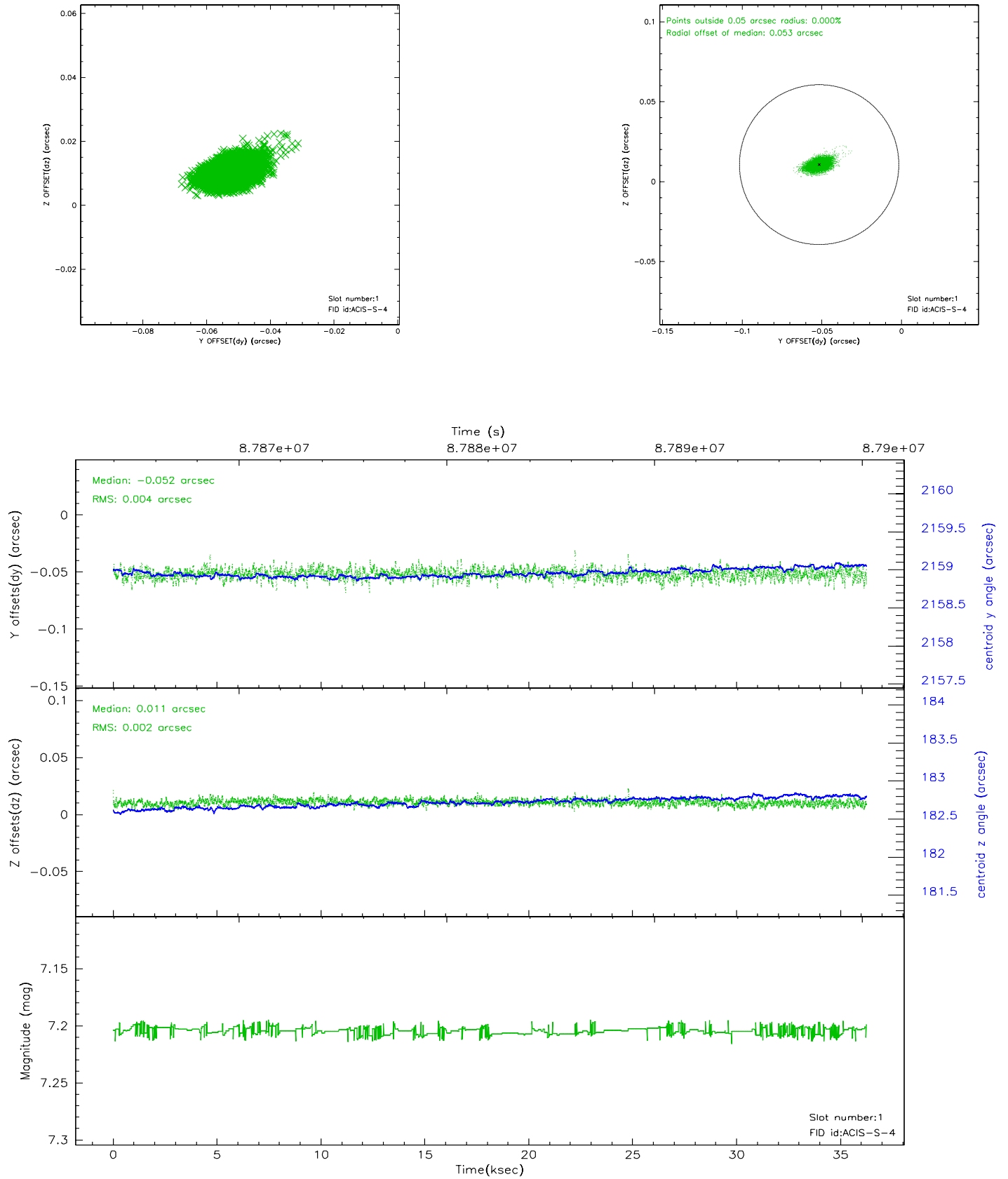


## 2.5 FID Slots

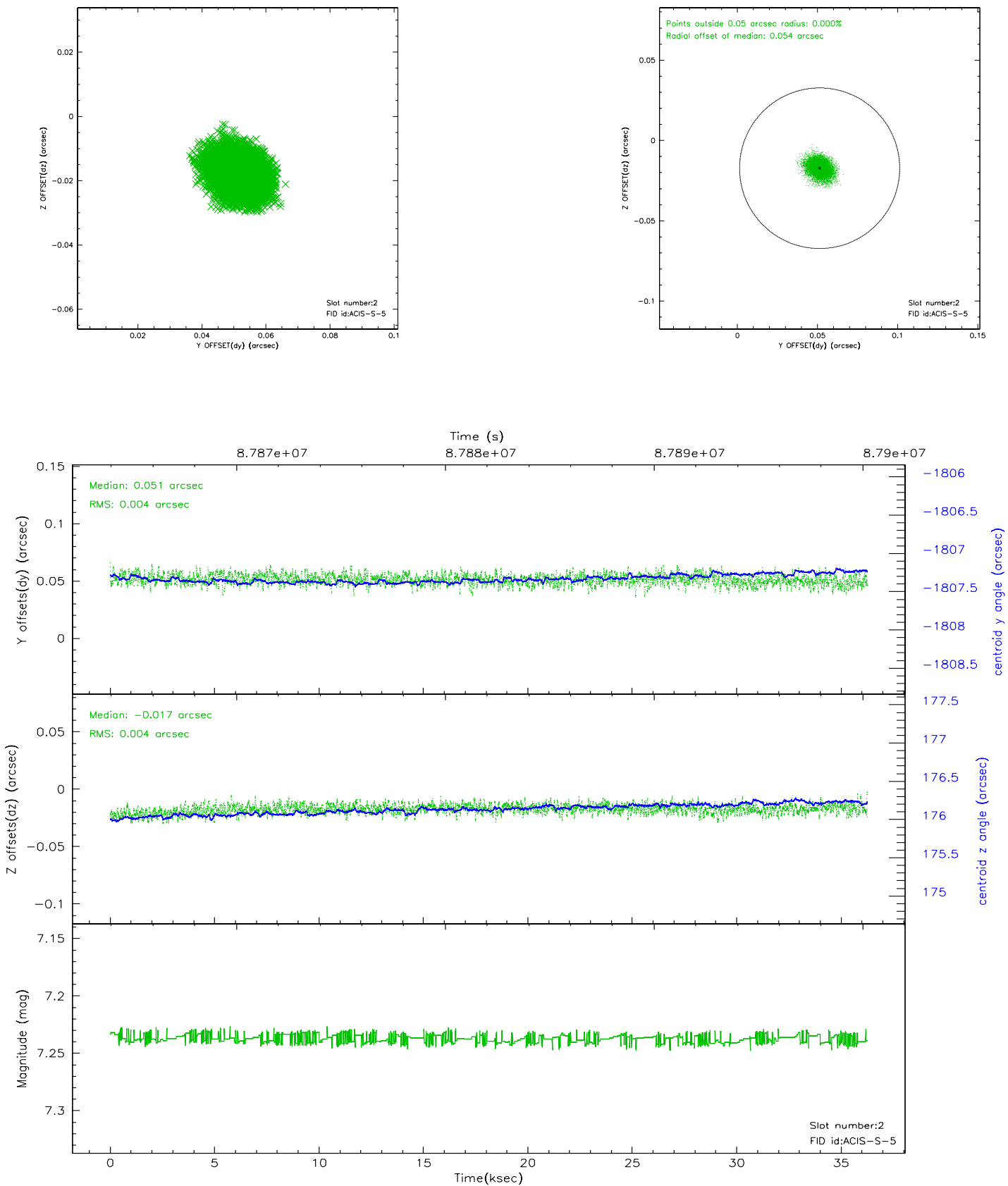
### 2.5.1 Slot 0



## 2.5.2 Slot 1

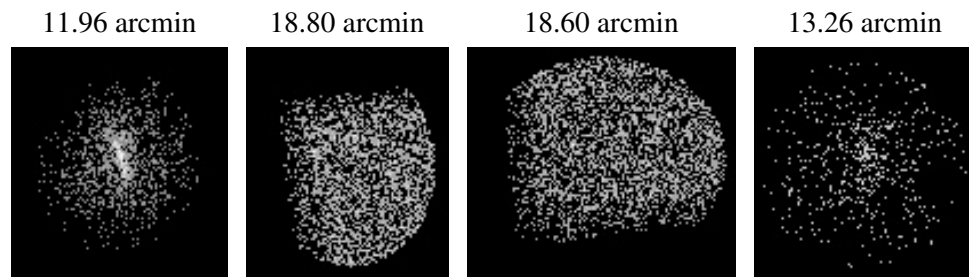


## 2.5.3 Slot 2





### 3 Point Sources



## A Summary

### A.1 Status

V&V Scientist	Jen Lauer
V&V Date (YYYY-MM-DD)	2007.06.12
V&V Edition	1
V&V Disposition and Status	OK
V&V Charge Time	35.913

### A.2 Comments