

# V&V Reference Report

## L2 ASCDS Version : 7.6.10

Observation 2199 - L2 Version 001  
Chandra X-Ray Center

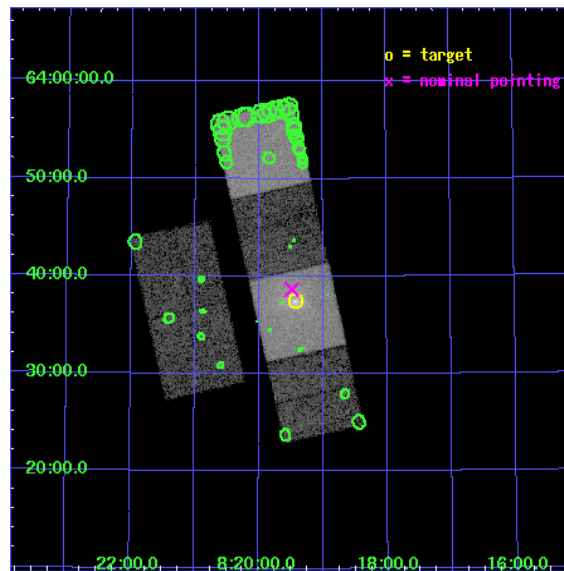
L2 Processing Date : Jun 12 2007

## Contents

<b>1</b>	<b>Front</b>	<b>2</b>
<b>2</b>	<b>OBI</b>	<b>3</b>
2.1	OBI . . . . .	3
2.1.1	Images . . . . .	3
2.1.2	Bias . . . . .	3
2.1.3	Parameters . . . . .	4
2.1.4	Events . . . . .	4
2.2	Compared Parameters . . . . .	5
2.3	Aspect . . . . .	6
2.4	Star Slots . . . . .	9
2.4.1	Slot 3 . . . . .	9
2.4.2	Slot 4 . . . . .	10
2.4.3	Slot 5 . . . . .	11
2.4.4	Slot 6 . . . . .	12
2.4.5	Slot 7 . . . . .	13
2.5	FID Slots . . . . .	14
2.5.1	Slot 0 . . . . .	14
2.5.2	Slot 1 . . . . .	15
2.5.3	Slot 2 . . . . .	16
<b>3</b>	<b>Point Sources</b>	<b>17</b>
<b>A</b>	<b>Summary</b>	<b>18</b>
A.1	Status . . . . .	18
A.2	Comments . . . . .	18

# 1 Front

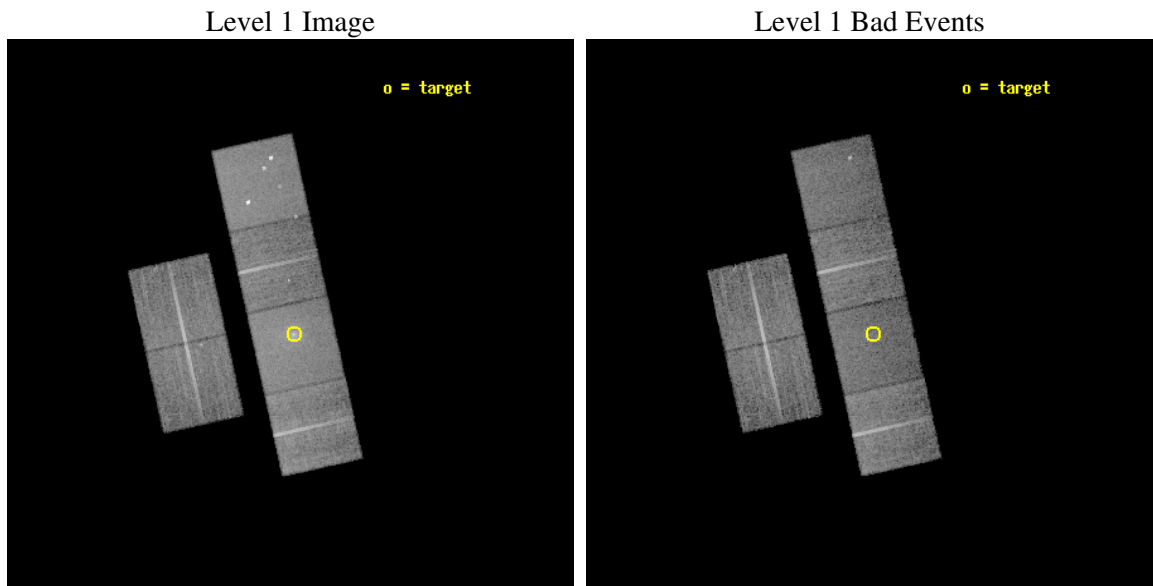
seq_num	800138
obs_id	2199
title	THE INTERACTION BETWEEN RADIO GALAXIES AND ICM IN THE CORES OF CLUSTERS
observer	DR ALASTAIR EDGE
object	RXJ0819.6+6336
dtcycle	0
cycle	P
ra_targ	124.857083
dec_targ	63.624444
ra_nom	124.87125342884
dec_nom	63.644447829602
roll_nom	77.488930554082
revision	2
ontime	15136.000014096
livetime	14944.338868113
ontime2	15129.518143475
ontime3	15136.000014096
ontime5	15136.000014096
ontime6	15136.000014096
ontime7	15136.000014096
ontime8	15136.000014096
l2events	157258



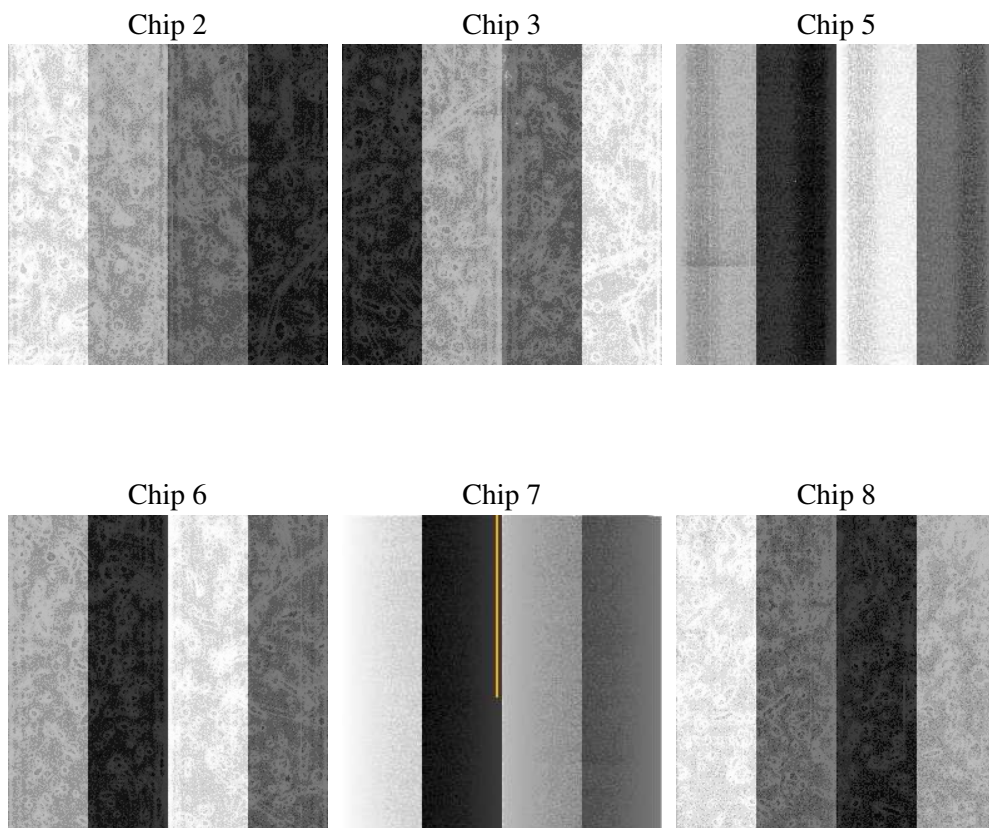
## 2 OBI

### 2.1 OBI

#### 2.1.1 Images



#### 2.1.2 Bias



### 2.1.3 Parameters

obi_num	0
ascdsver	7.6.10
caldsver	3.4.0
date	2007-06-12T12:33:36
revision	2

sched_exp_time	15000.000000
ontime	15136.000014096
ontime2	15129.518143475
ontime3	15136.000014096
ontime5	15136.000014096
ontime6	15136.000014096
ontime7	15136.000014096
ontime8	15136.000014096
l1events	692989

### 2.1.4 Events

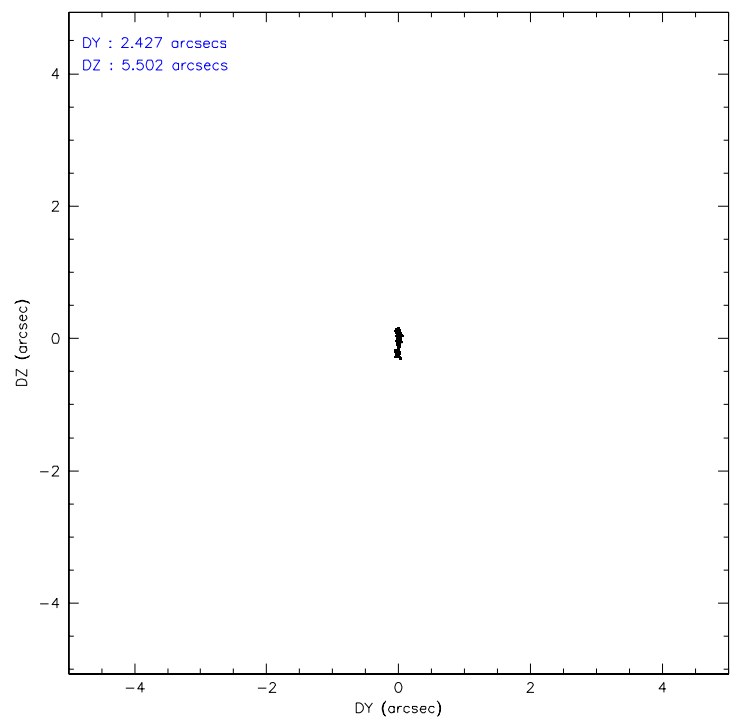
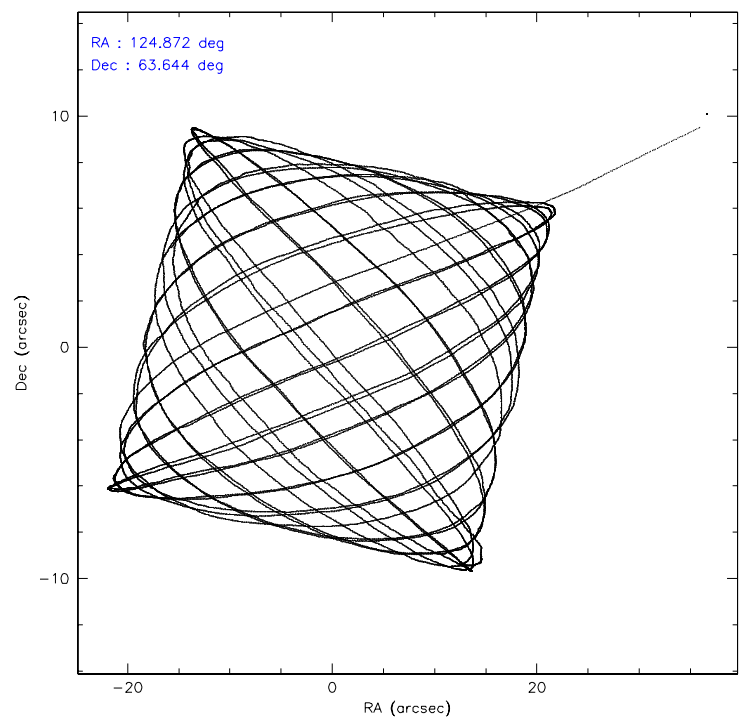
	ccd 2	ccd 3	ccd 5	ccd 6	ccd 7	ccd 8
level 1 events	102003	97165	137725	100657	133463	121976
rejected events	91371	86616	71632	88974	70594	97621
rejected %	89%	89%	52%	88%	52%	80%

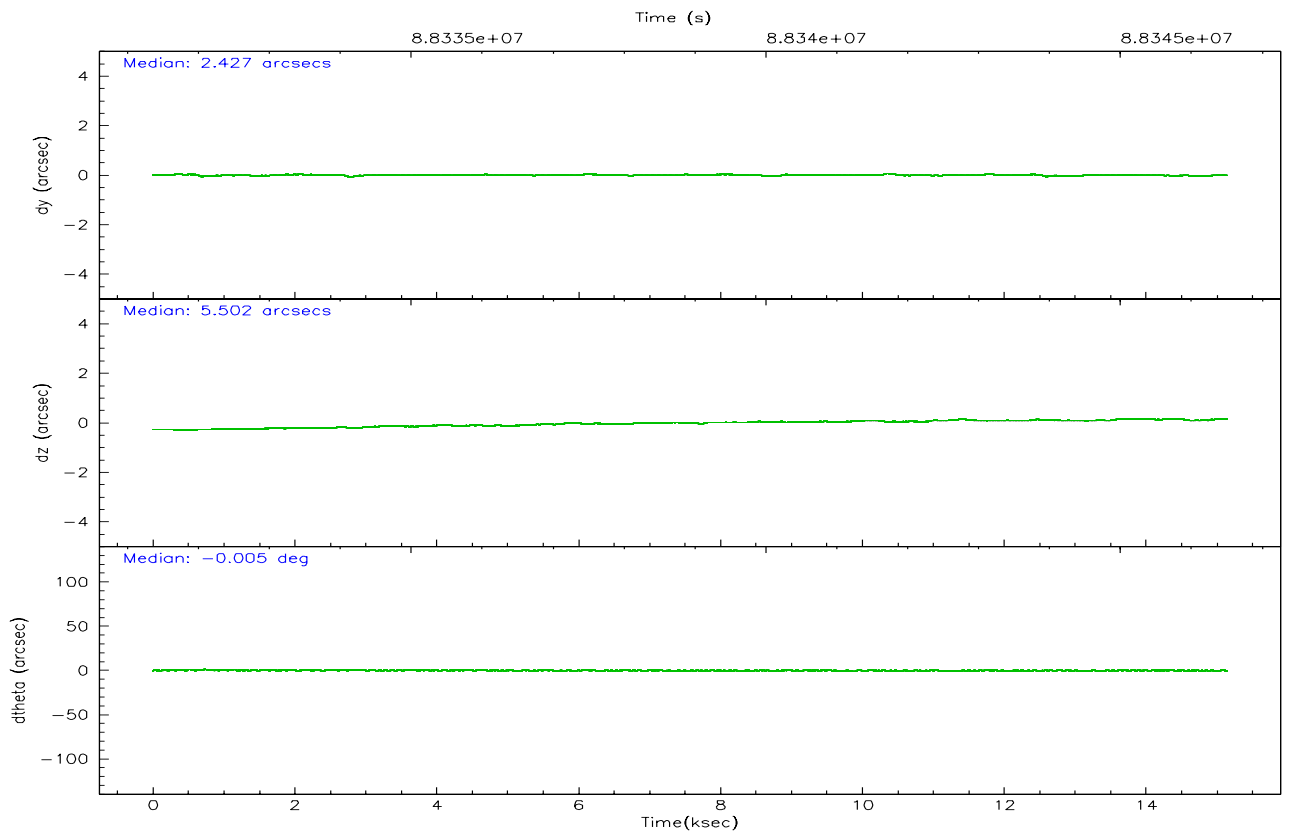
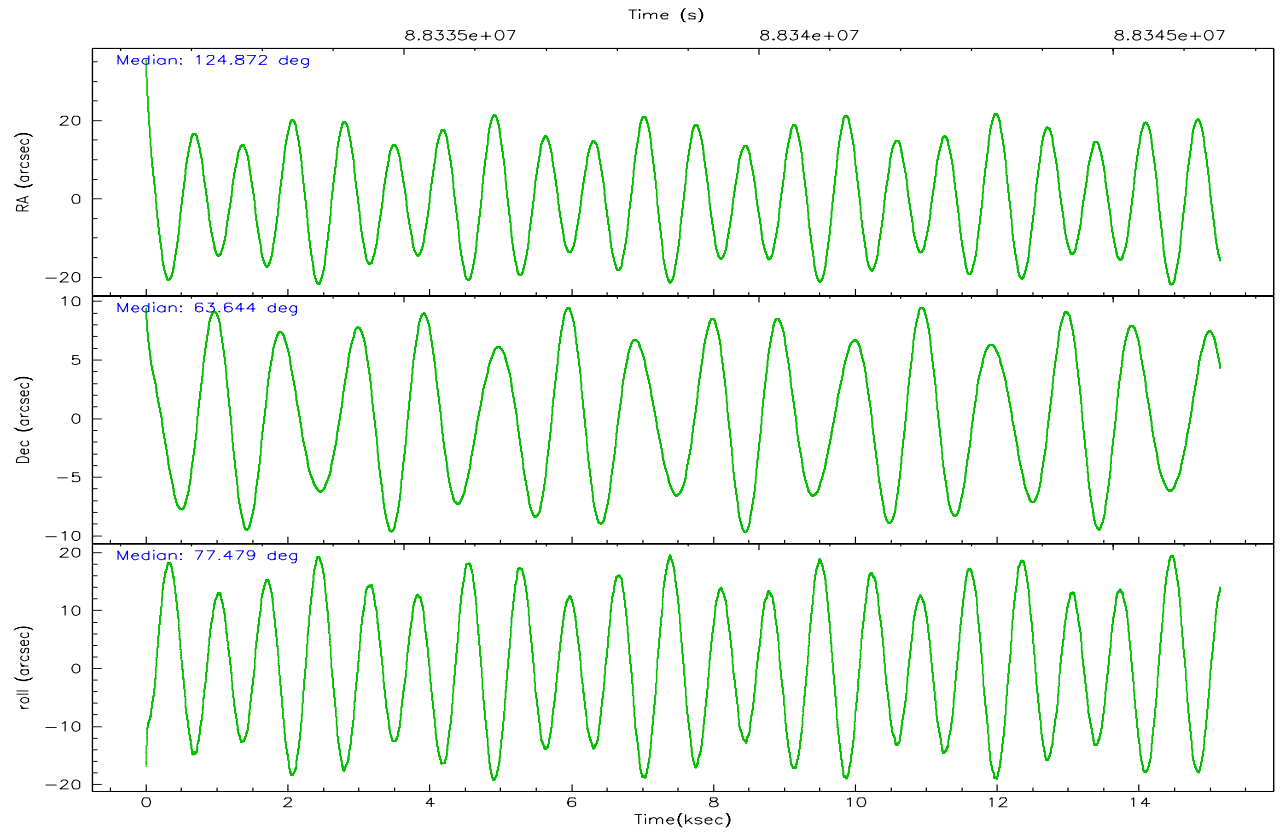
	ccd 2	ccd 3	ccd 5	ccd 6	ccd 7	ccd 8
grade 0 events	4554	4696	11074	5146	8862	7810
	4%	4%	8%	5%	6%	6%
grade 1 events	27	50	836	38	112	66
	0%	0%	0%	0%	0%	0%
grade 2 events	2255	2050	18374	2227	13015	5097
	2%	2%	13%	2%	9%	4%
grade 3 events	1016	1019	2710	1087	6068	2821
	0%	1%	1%	1%	4%	2%
grade 4 events	997	1029	2684	1130	6004	2664
	0%	1%	1%	1%	4%	2%
grade 5 events	3333	3543	9962	3800	11450	4858
	3%	3%	7%	3%	8%	3%
grade 6 events	1843	1791	31433	2126	29106	6037
	1%	1%	22%	2%	21%	4%
grade 7 events	87978	82987	60652	85103	58846	92623
	86%	85%	44%	84%	44%	75%

## 2.2 Compared Parameters

Parameter	Planned	Actual	Parameter	Planned	Actual
Instrument	ACIS	ACIS	Obspar format version number	6	6
Detector	ACIS-235678	ACIS-235678	Obspar file type	PREDICTED	ACTUAL
Grating	NONE	NONE	Obspar update status	NONE	UPDATED
Data mode	FAINT	FAINT	Number of optional ACIS chips dropped	0	0
Observation mode	POINTING	POINTING	On-chip summing requested	N	N
Pointing RA	124.890166	124.8712534288405	Subarray requested	NONE	NONE
Pointing Dec	63.618420	63.64444782960182	Alternating exposures requested	N	N
Pointing Roll	77.315357	77.48893055408222	Primary exposure time	0.000000	3.2
SIM focus pos (mm)	-0.684267	-0.6828225247311905			
SIM defocus (mm)	0	0.001444936568705701			
SIM translation stage pos (mm)	-190.132523	-190.1425803651734			
SIM translation stage offset (mm)	0	0.01005778216563158			
Observation start time	88331502.184000	88330431.73391099			
Observation start date	2000-10-19T08:30:38	2000-10-19T08:13:51			
Observation end time	88346502.184000	88347064.40954			
Observation end date	2000-10-19T12:40:38	2000-10-19T12:51:04			
Read mode	TIMED	TIMED			

## 2.3 Aspect





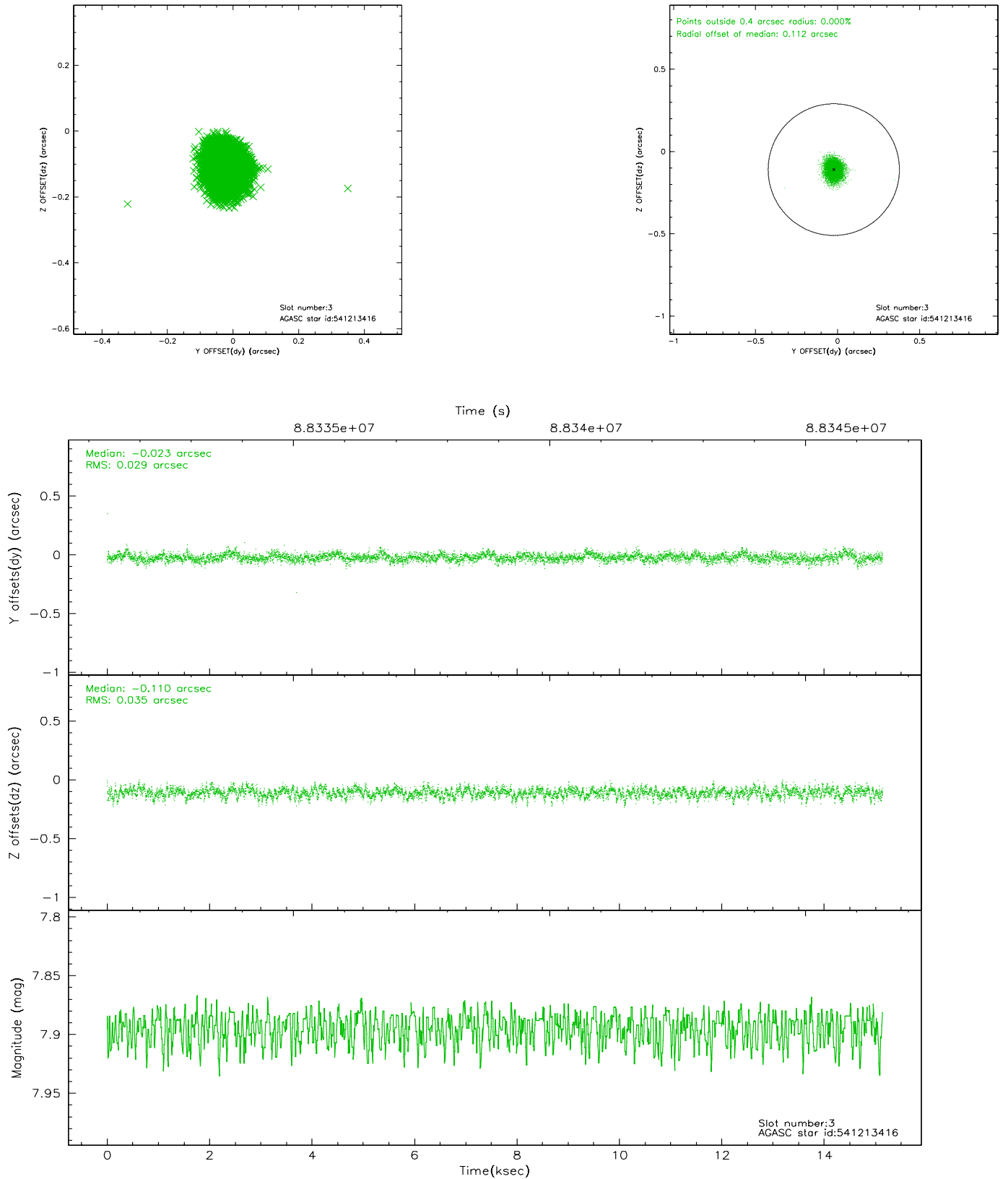
### Slot Statistics

slot	status	id	mag	n_pts	med_dy	med_dz	dr1	dr2	ra	dec	mean_y	mean_z
0	FID	ACIS-S-2	7.11	3694	-0.035	0.016	0.007	0.011	0.000000	0.000000	-755.05	-1726.55
1	FID	ACIS-S-4	7.20	3694	-0.034	0.013	0.005	0.009	0.000000	0.000000	2158.05	181.69
2	FID	ACIS-S-5	7.23	3694	0.038	-0.020	0.007	0.011	0.000000	0.000000	-1807.48	175.58
3	GUIDE	541213416	7.89	7386	-0.023	-0.110	0.048	0.080	124.092958	63.730099	120.86	1329.71
4	GUIDE	541215024	8.55	7388	0.091	-0.169	0.067	0.105	124.782420	63.562167	-235.18	124.57
5	GUIDE	541199712	8.98	7384	0.083	0.092	0.063	0.102	125.630285	63.310683	-810.95	-1408.75
6	GUIDE	541212432	9.12	7384	-0.016	0.089	0.069	0.113	125.331076	63.704075	457.67	-617.25
7	GUIDE	541337424	9.52	7381	-0.138	0.100	0.093	0.154	126.570903	63.968743	1847.94	-2304.90

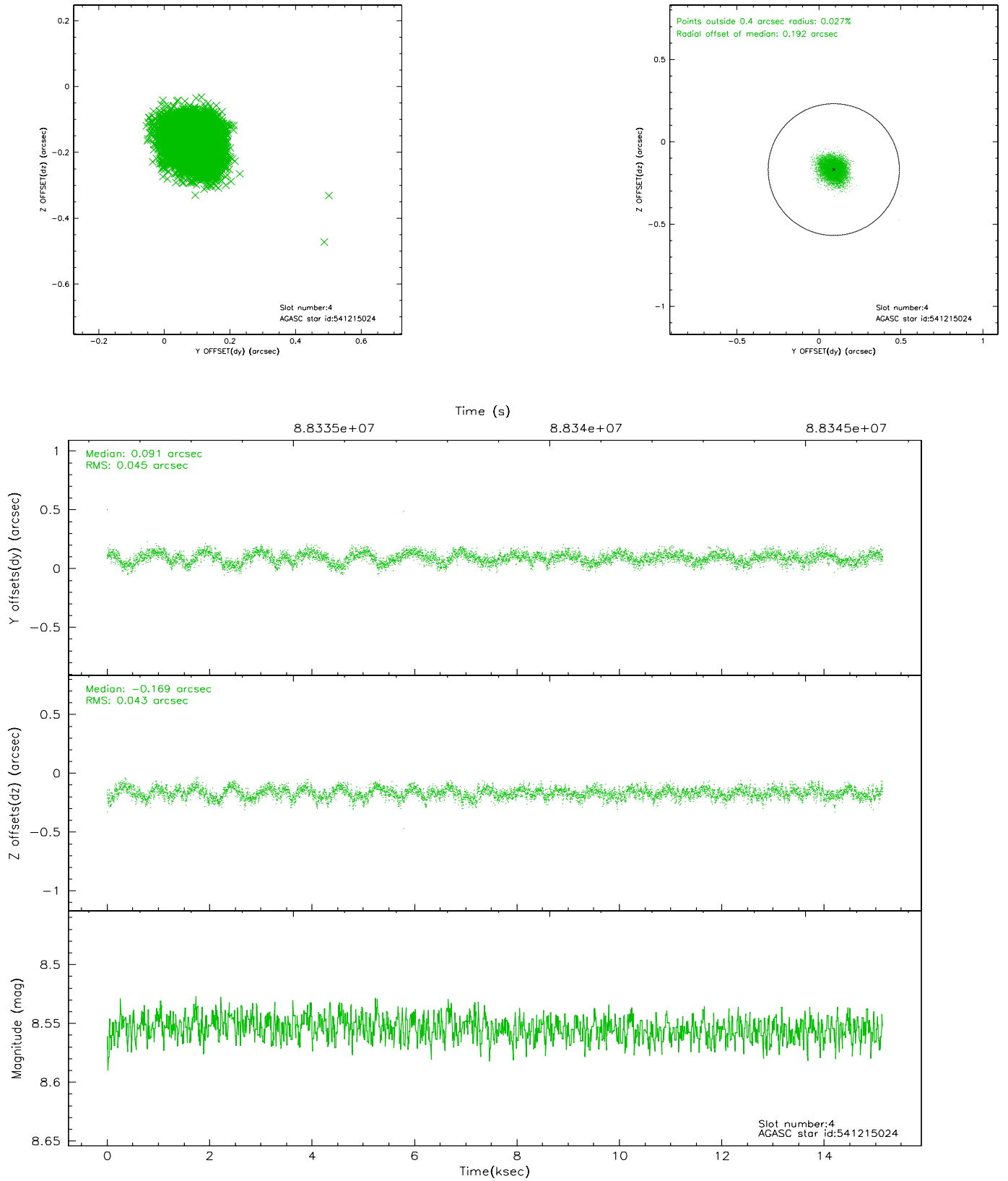


## 2.4 Star Slots

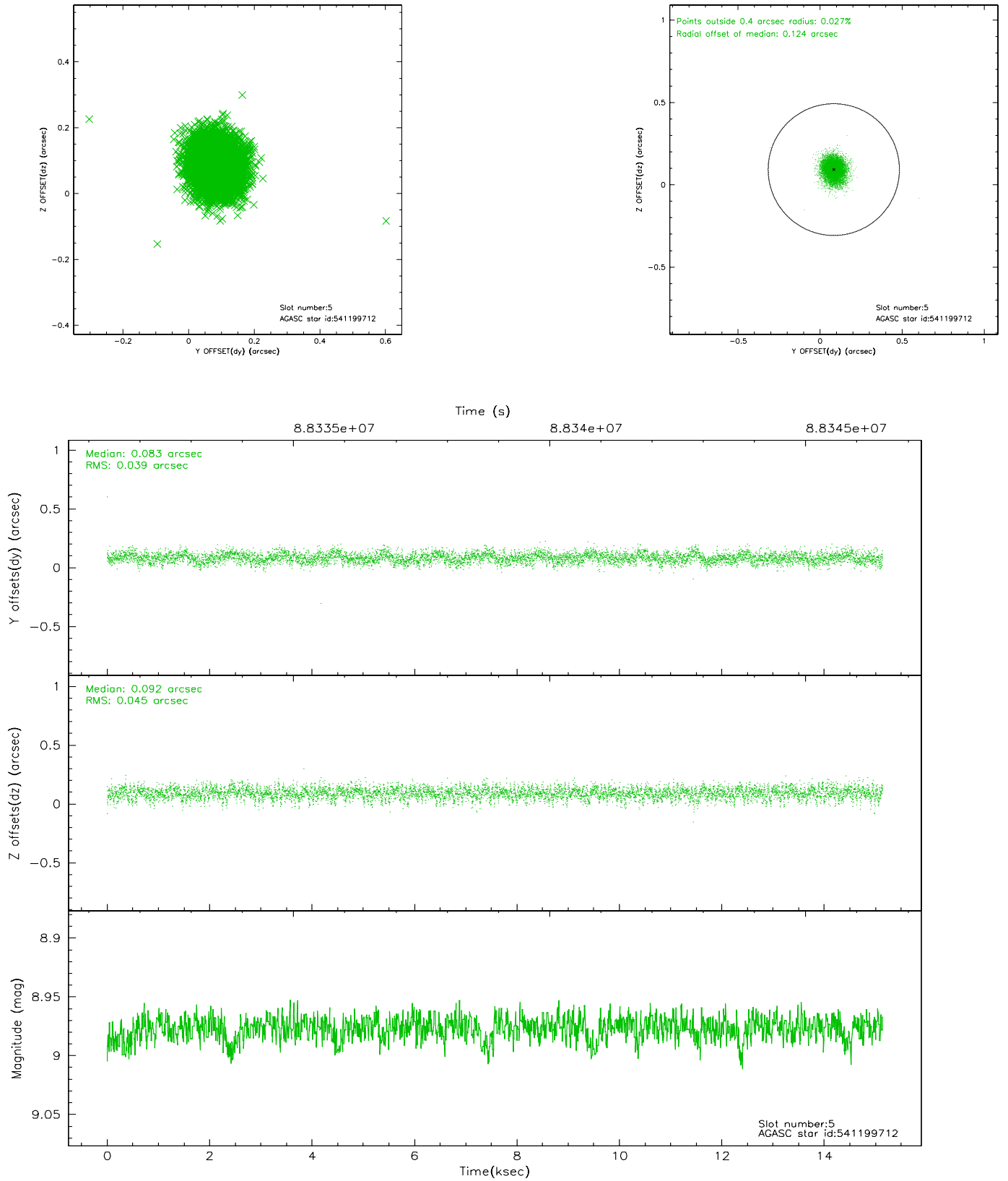
### 2.4.1 Slot 3



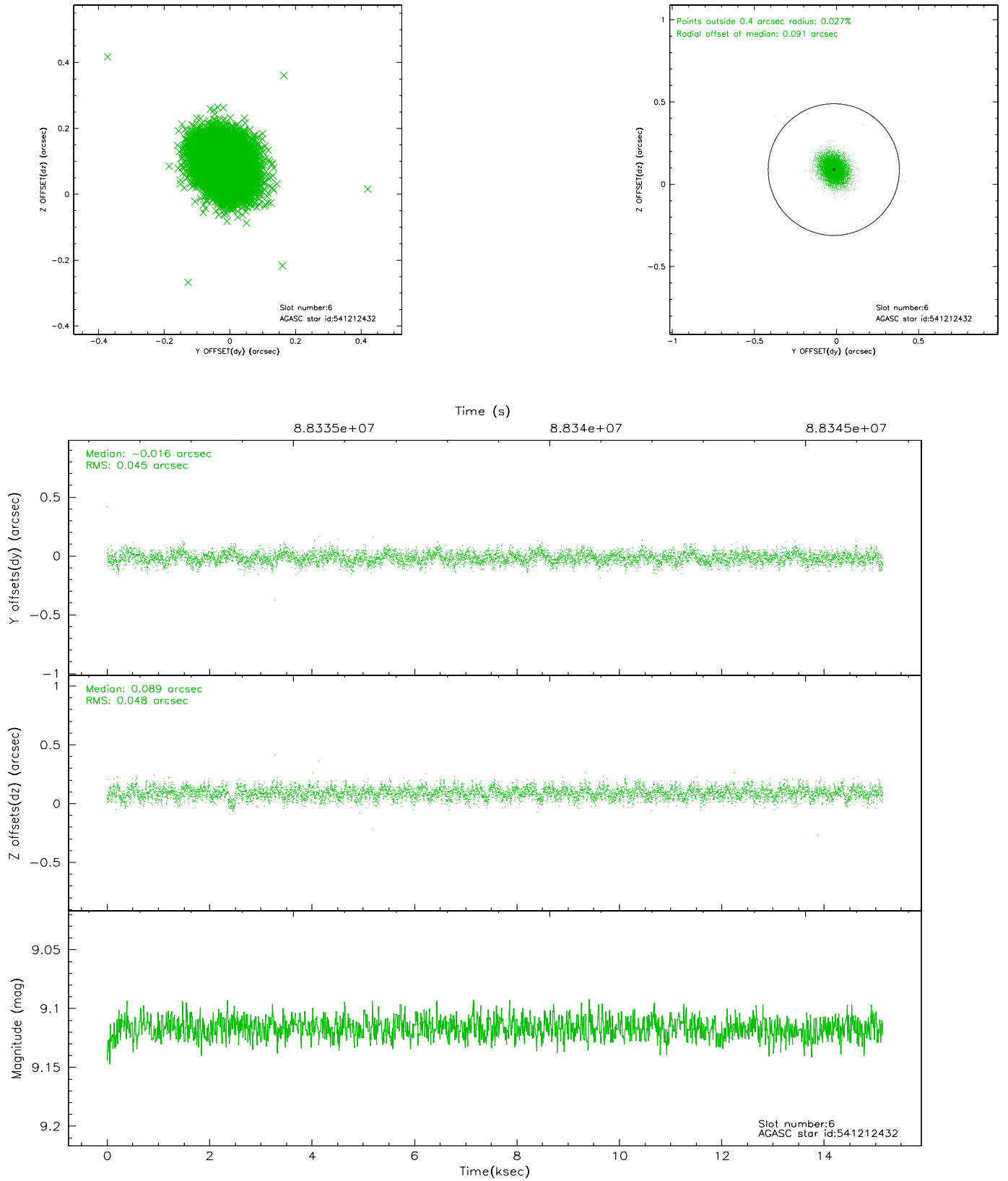
## 2.4.2 Slot 4



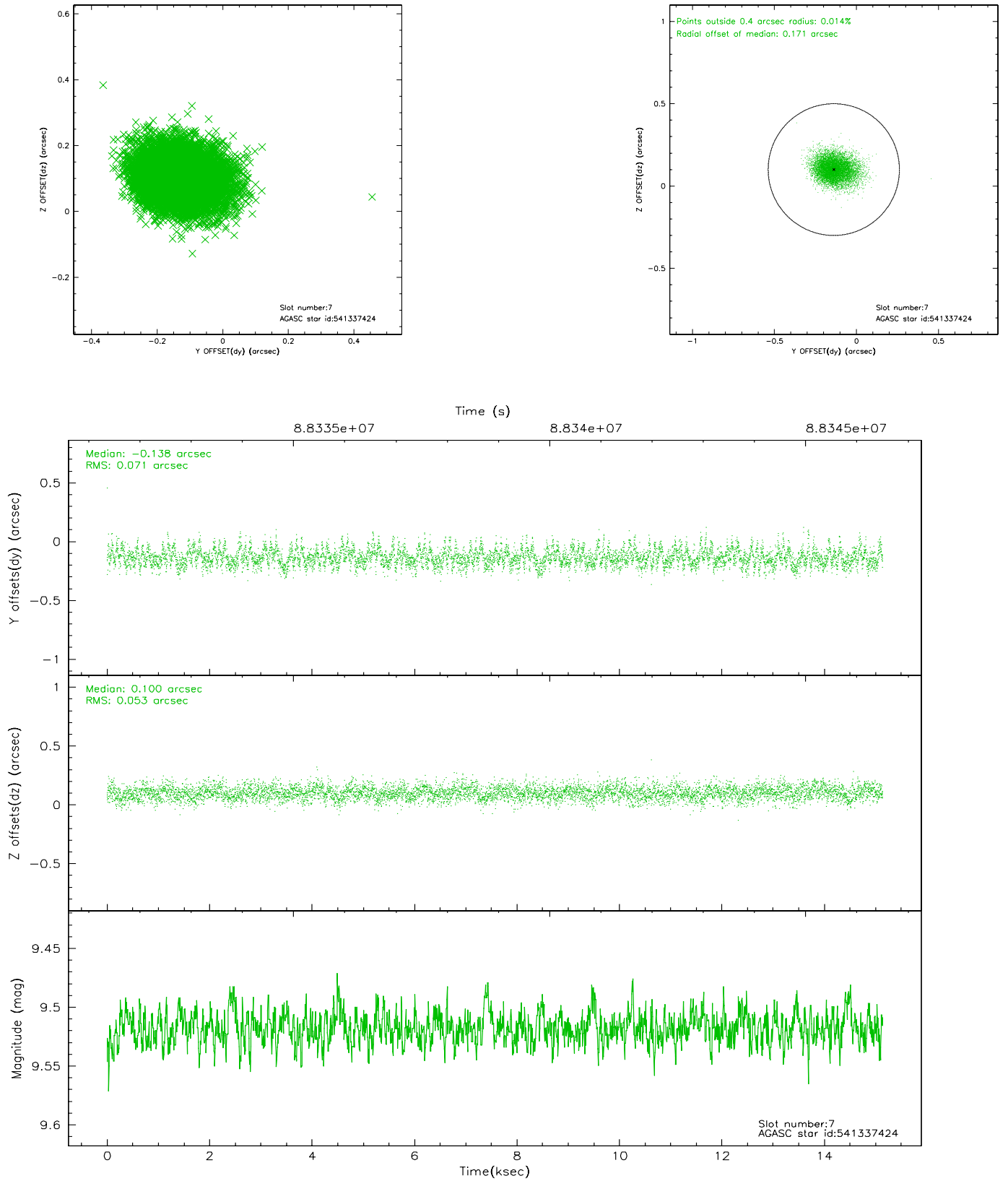
### 2.4.3 Slot 5



## 2.4.4 Slot 6

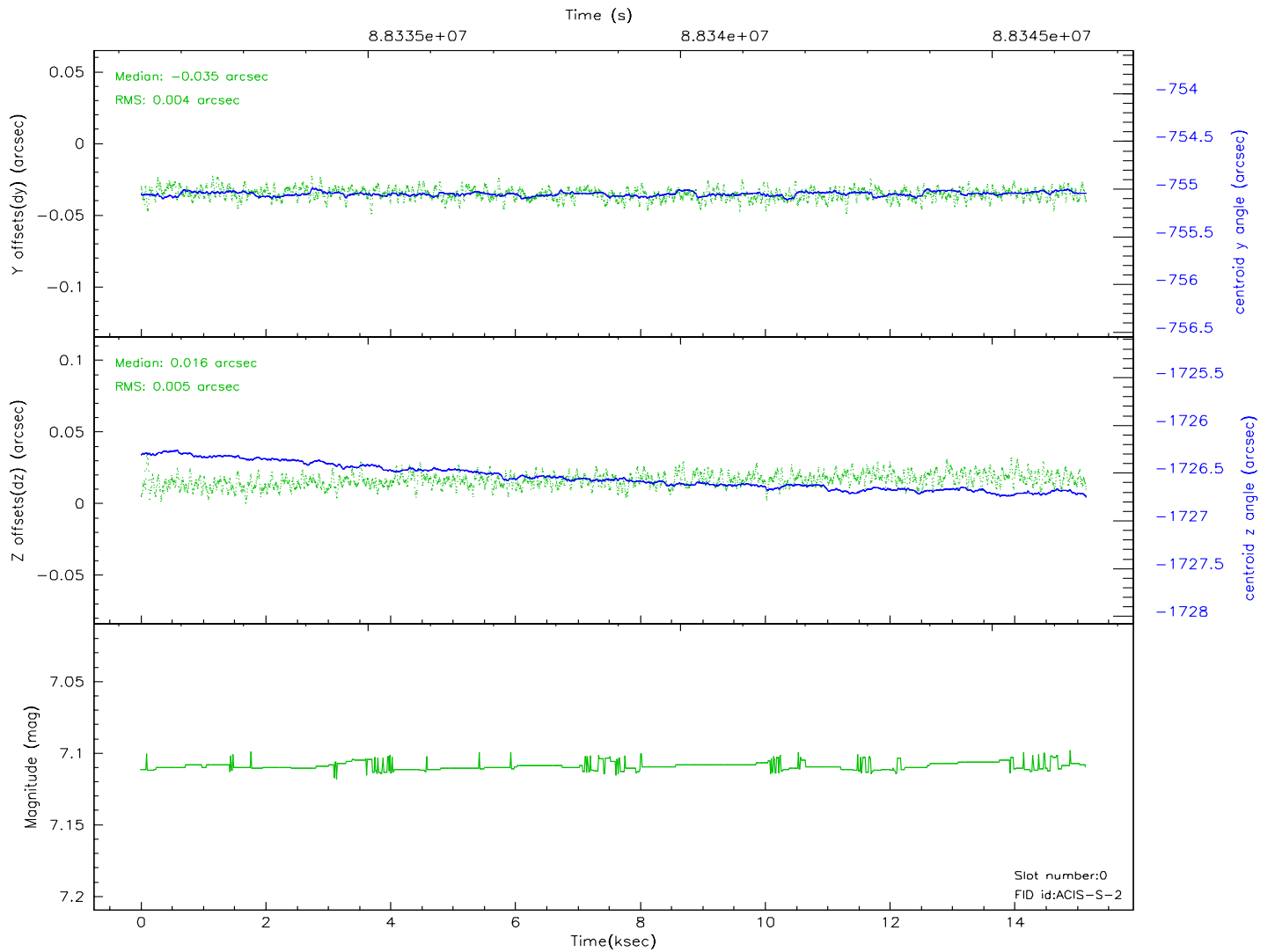
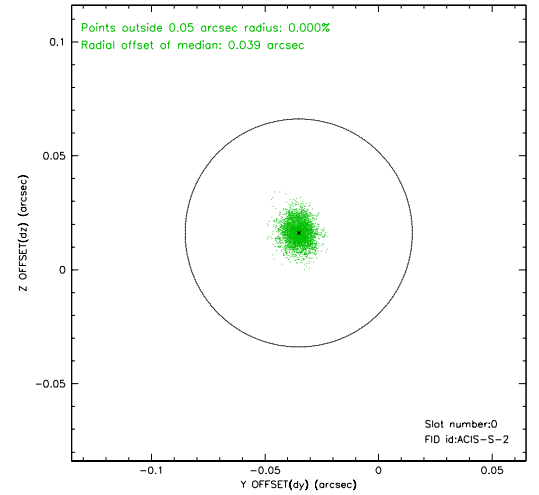
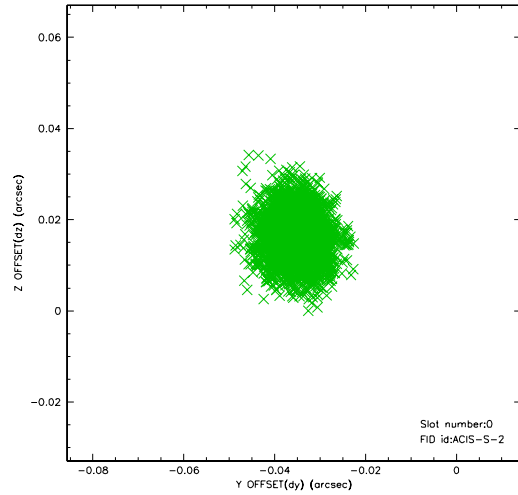


## 2.4.5 Slot 7

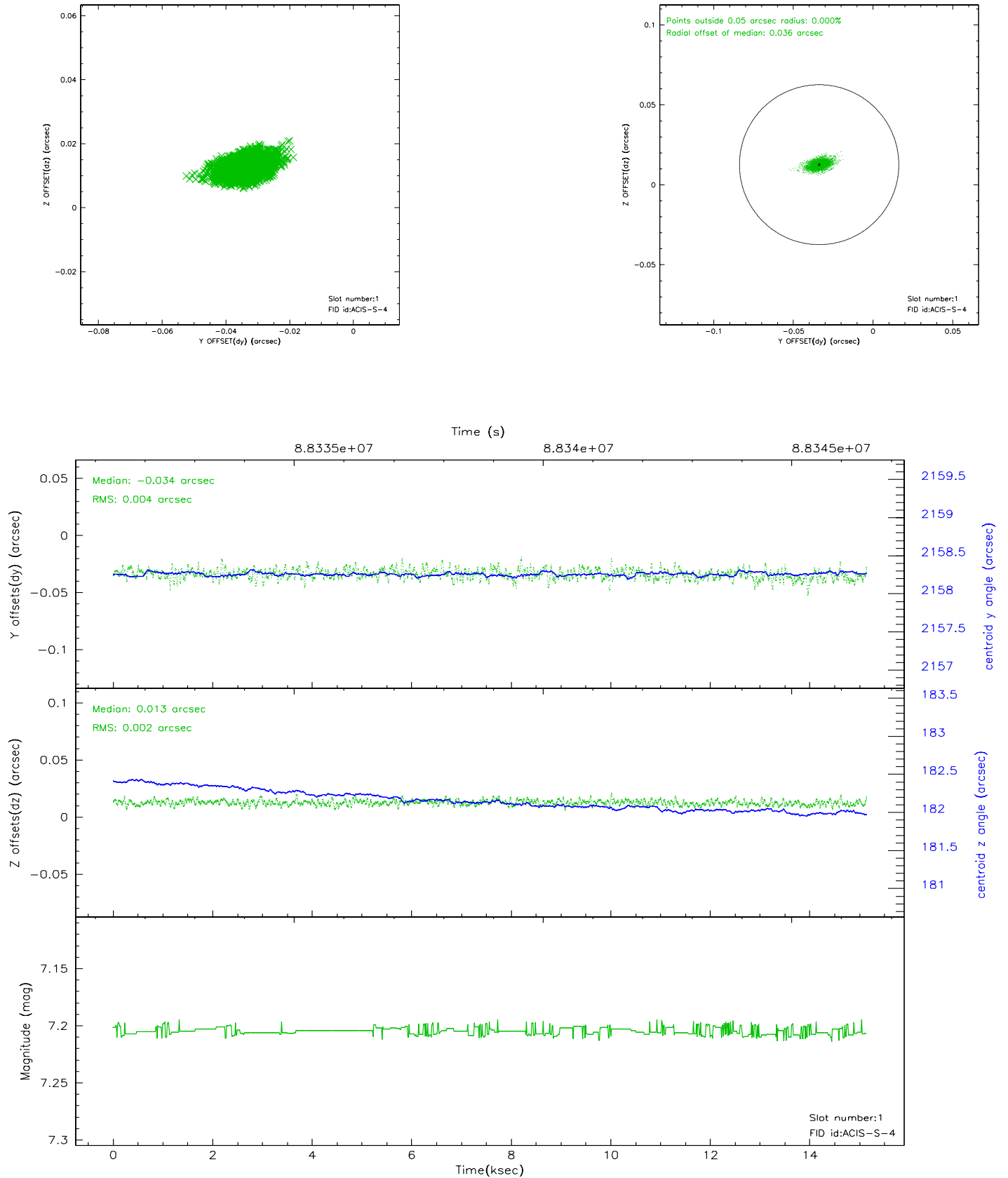


## 2.5 FID Slots

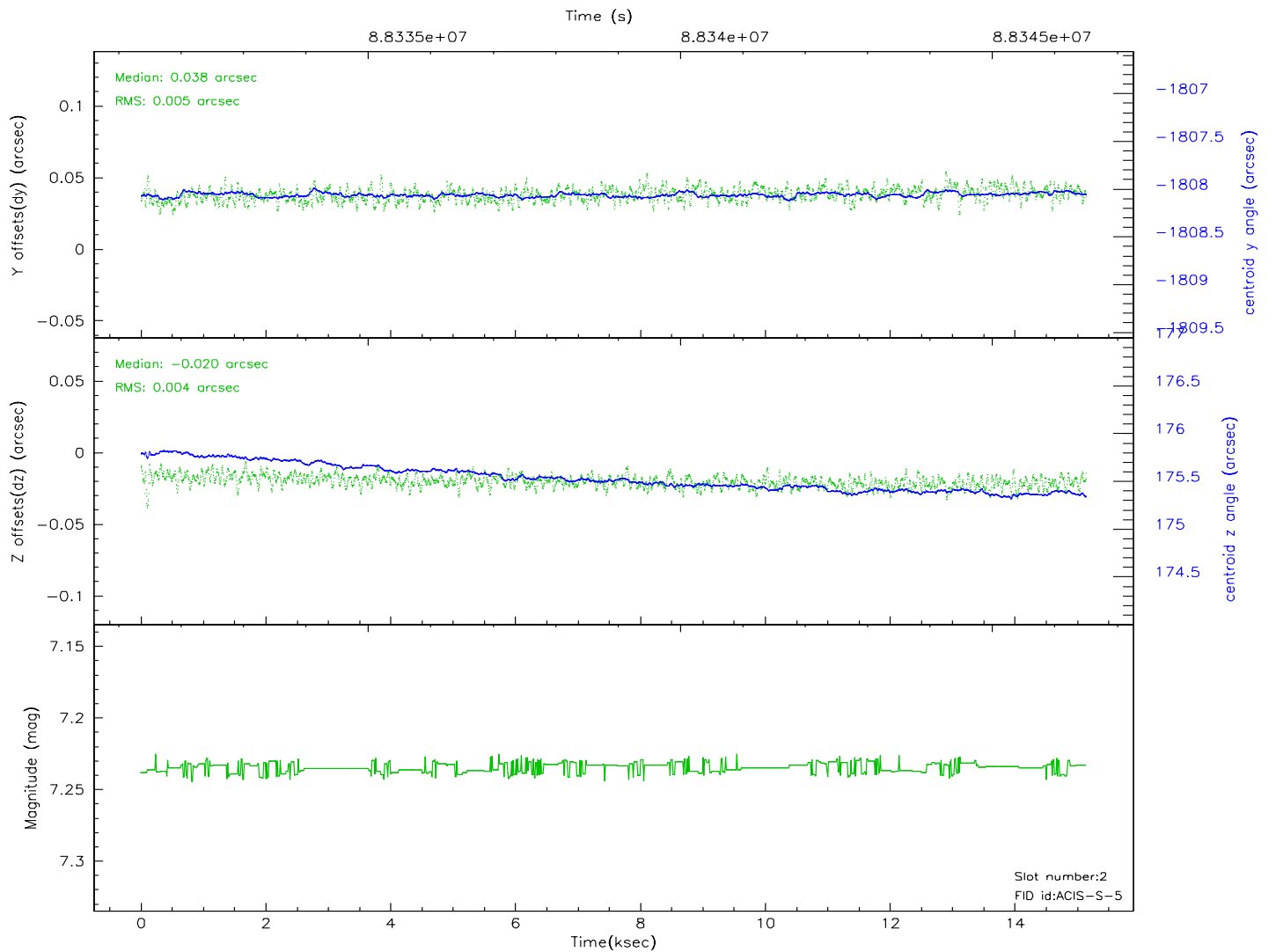
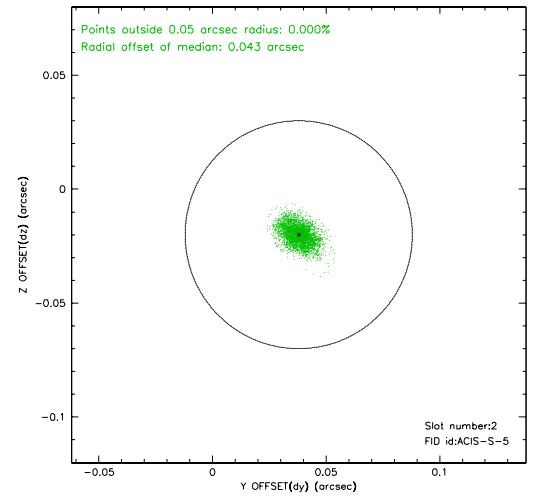
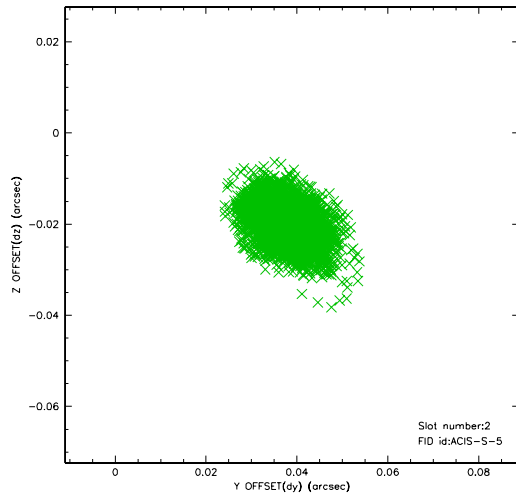
### 2.5.1 Slot 0



## 2.5.2 Slot 1

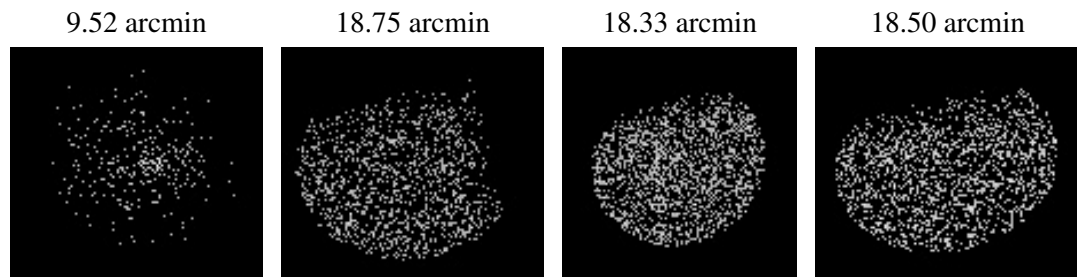


## 2.5.3 Slot 2





### 3 Point Sources



## A Summary

### A.1 Status

V&V Scientist	Jen Lauer
V&V Date (YYYY-MM-DD)	2007.06.12
V&V Edition	1
V&V Disposition and Status	OK
V&V Charge Time	15.136

### A.2 Comments