

# V&V Reference Report

## L2 ASCDS Version : 7.6.9

Observation 1661 - L2 Version 001  
Chandra X-Ray Center

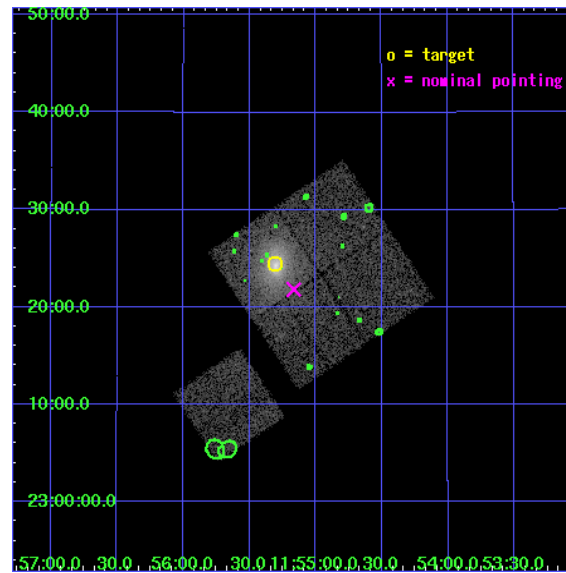
L2 Processing Date : Nov 21 2006

## Contents

<b>1</b>	<b>Front</b>	<b>2</b>
<b>2</b>	<b>OBI</b>	<b>3</b>
2.1	OBI . . . . .	3
2.1.1	Images . . . . .	3
2.1.2	Bias . . . . .	3
2.1.3	Parameters . . . . .	4
2.1.4	Events . . . . .	4
2.2	Compared Parameters . . . . .	5
2.3	Aspect . . . . .	6
2.4	Star Slots . . . . .	9
2.4.1	Slot 3 . . . . .	9
2.4.2	Slot 4 . . . . .	10
2.4.3	Slot 5 . . . . .	11
2.4.4	Slot 6 . . . . .	12
2.4.5	Slot 7 . . . . .	13
2.5	FID Slots . . . . .	14
2.5.1	Slot 0 . . . . .	14
2.5.2	Slot 1 . . . . .	15
2.5.3	Slot 2 . . . . .	16
<b>3</b>	<b>Point Sources</b>	<b>17</b>
<b>A</b>	<b>Summary</b>	<b>18</b>
A.1	Status . . . . .	18
A.2	Comments . . . . .	18

# 1 Front

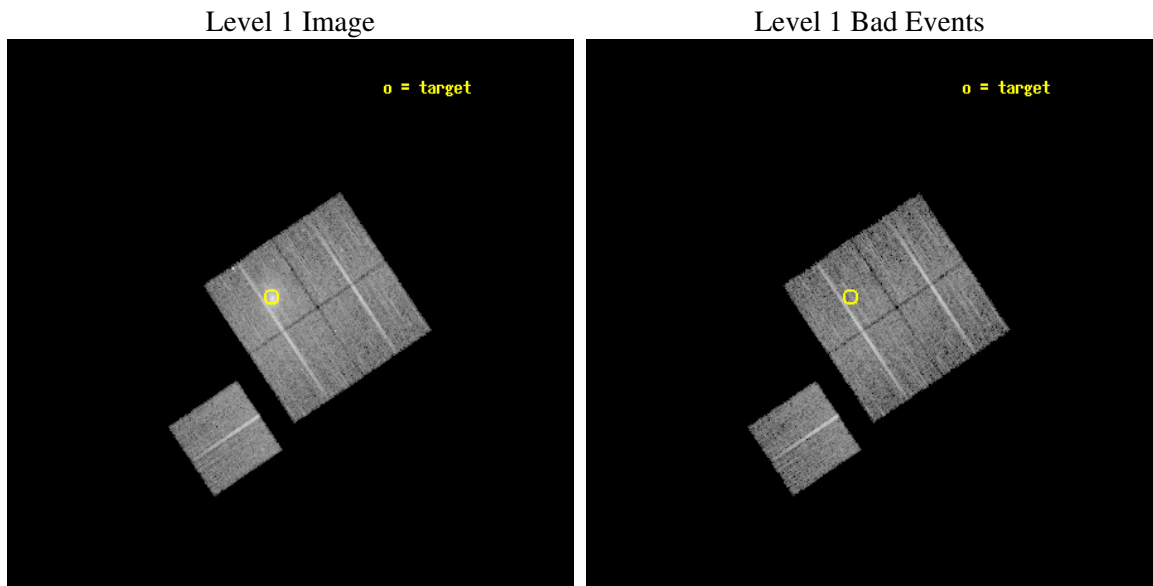
seq_num	800129
obs_id	1661
title	DETERMINATION OF H0 AND Q0, 2000 PART 1
observer	DR. LEON VANSPEYBROECK
object	A1413
dtcycle	0
cycle	P
ra_targ	178.825833
dec_targ	23.408
ra_nom	178.79103074287
dec_nom	23.363988070368
roll_nom	236.21189194655
revision	2
ontime	9873.4590008408
livedtime	9744.45499026
ontime0	9876.59998101
ontime1	9876.59998101
ontime2	9876.59998101
ontime3	9873.4590008408
ontime6	9876.59998101
l2events	52850



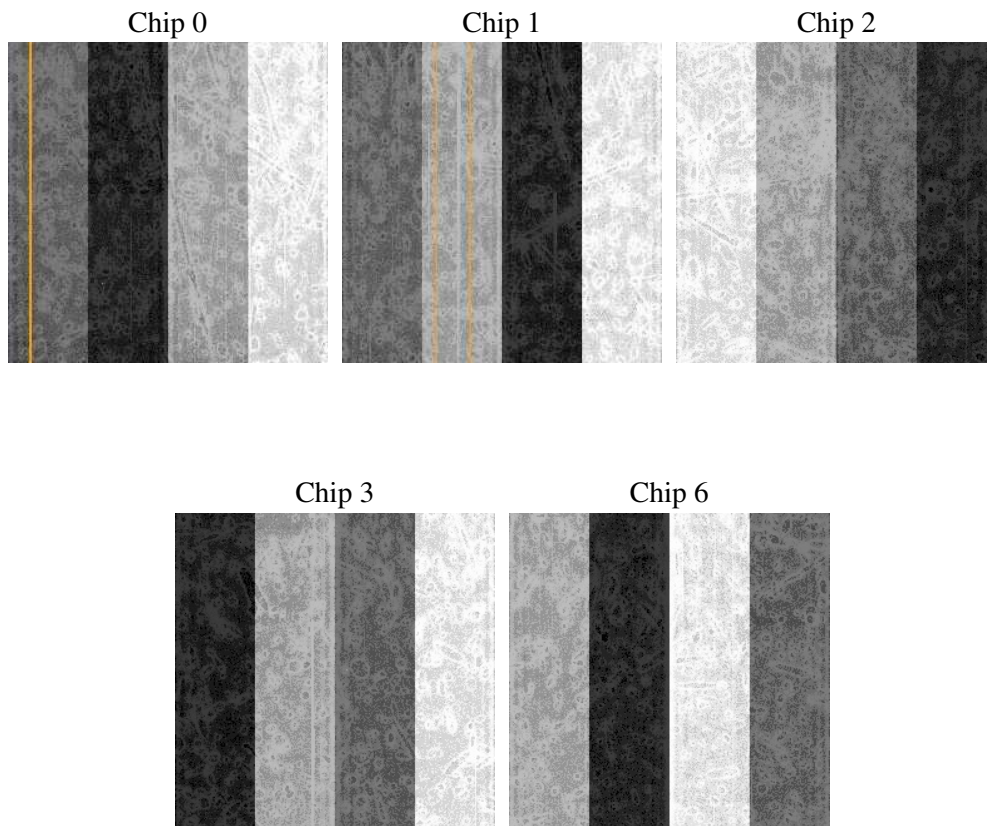
## 2 OBI

### 2.1 OBI

#### 2.1.1 Images



#### 2.1.2 Bias



### 2.1.3 Parameters

obi_num	0
ascdsver	7.6.9
caldbver	3.2.4
date	2006-11-21T14:15:58
revision	2

sched_exp_time	10000.000000
ontime	9878.4442640841
ontime0	9884.7262643278
ontime1	9881.5852442533
ontime2	9881.5852442533
ontime3	9878.4442640841
ontime6	9884.7262643278
llevents	329758

### 2.1.4 Events

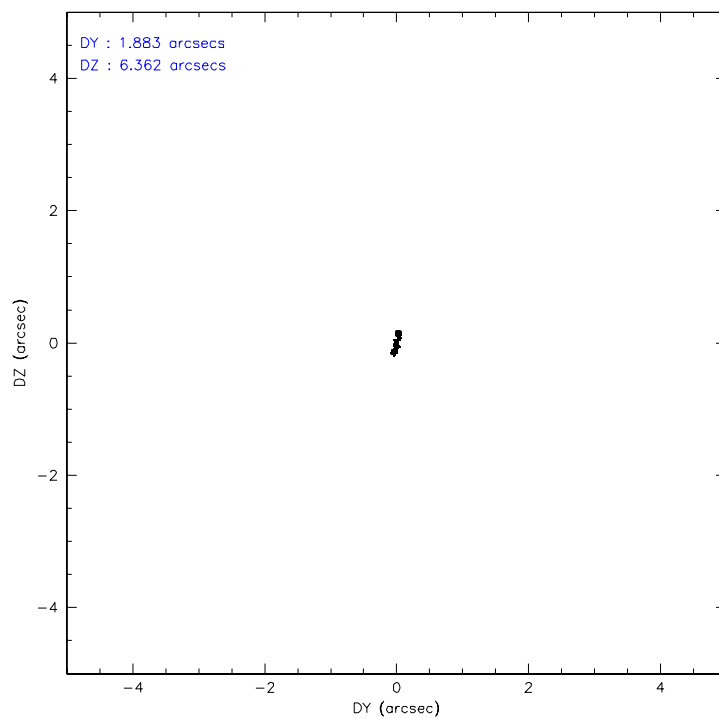
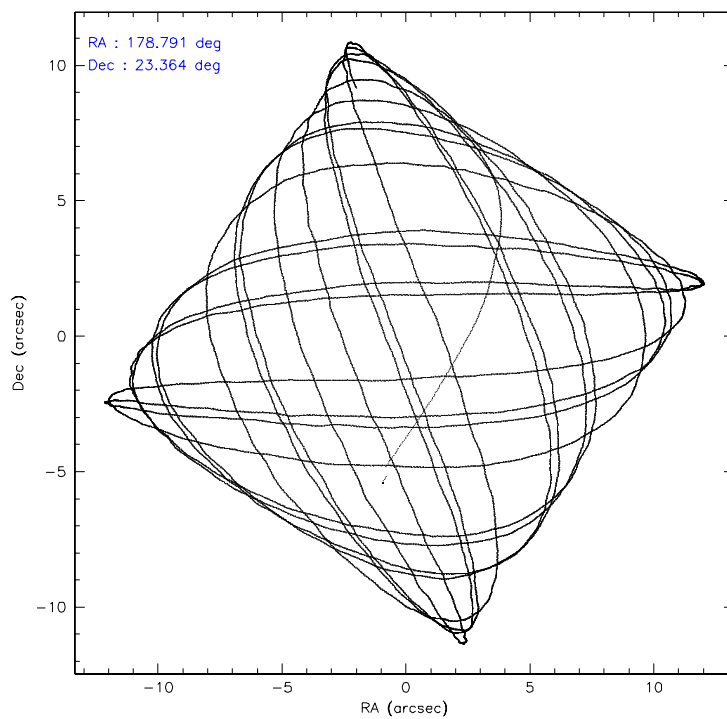
	ccd 0	ccd 1	ccd 2	ccd 3	ccd 6
level 1 events	58985	60619	63469	83989	62696
rejected events	51280	52129	55287	56347	55733
rejected %	86%	85%	87%	67%	88%

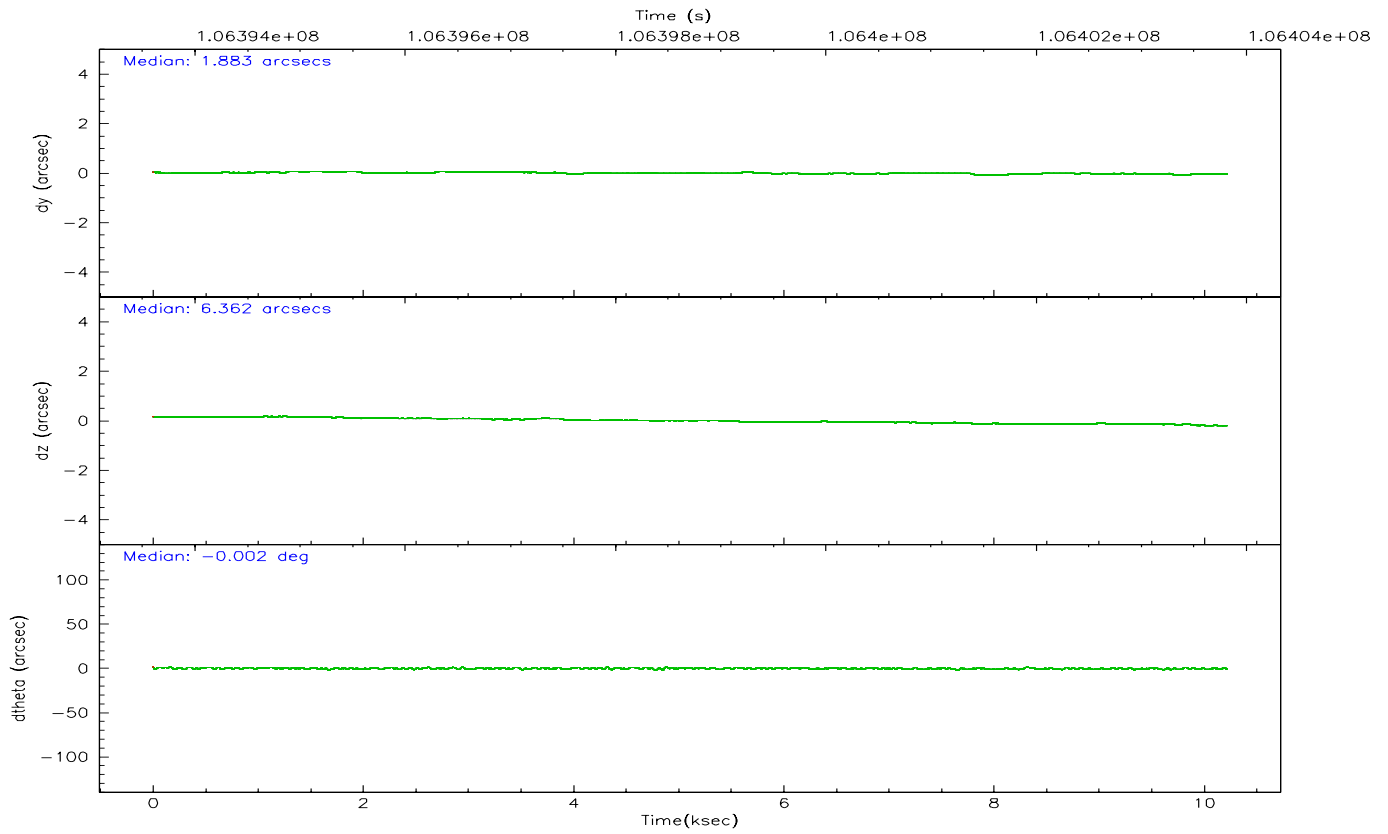
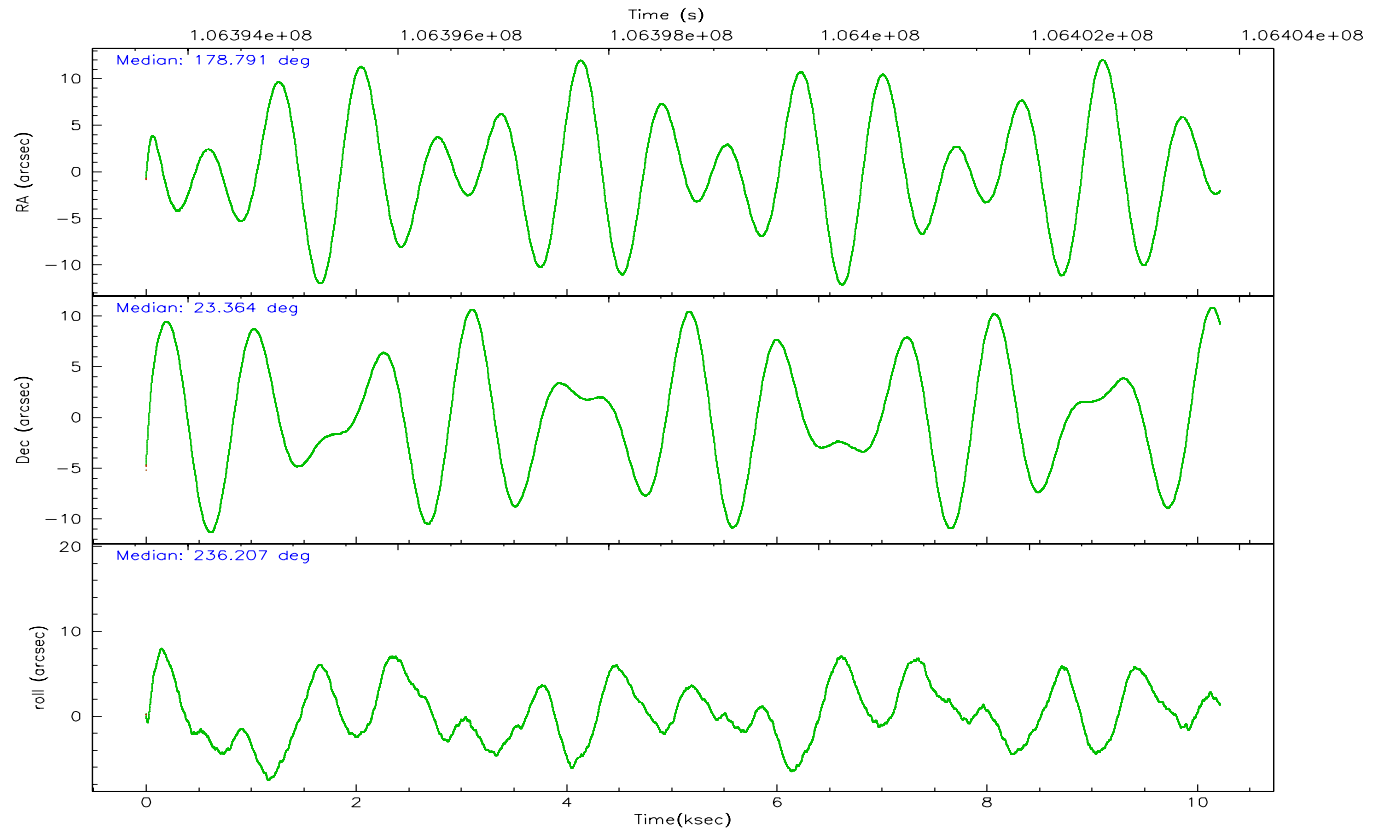
	ccd 0	ccd 1	ccd 2	ccd 3	ccd 6
grade 0 events	3336	3782	3891	19783	2766
	5%	6%	6%	23%	4%
grade 1 events	42	27	40	108	33
	0%	0%	0%	0%	0%
grade 2 events	1593	1621	1604	3516	1363
	2%	2%	2%	4%	2%
grade 3 events	773	797	673	1306	715
	1%	1%	1%	1%	1%
grade 4 events	684	820	724	1274	754
	1%	1%	1%	1%	1%
grade 5 events	2260	2440	2217	2558	2541
	3%	4%	3%	3%	4%
grade 6 events	1327	1472	1291	1774	1368
	2%	2%	2%	2%	2%
grade 7 events	48970	49660	53029	53670	53156
	83%	81%	83%	63%	84%

## 2.2 Compared Parameters

Parameter	Planned	Actual	Parameter	Planned	Actual
Instrument	ACIS	ACIS	Obspar format version number	6	6
Detector	ACIS-01236	ACIS-01236	Obspar file type	PREDICTED	ACTUAL
Grating	NONE	NONE	Obspar update status	NONE	UPDATED
Data mode	VFAINT	VFAINT	Number of optional ACIS chips dropped	0	0
Observation mode	POINTING	POINTING	On-chip summing requested	N	N
Pointing RA	178.792992	178.7910307428683	Subarray requested	NONE	NONE
Pointing Dec	23.391340	23.36398807036815	Alternating exposures requested	N	N
Pointing Roll	236.002432	236.2118919465538	Primary exposure time	0.000000	3.1
SIM focus pos (mm)	-0.782348	-0.7809083437167272			
SIM defocus (mm)	0	0.001439871863259334			
SIM translation stage pos (mm)	-225.840463	-225.8433433320239			
SIM translation stage offset (mm)	-7.752	-7.749109670905796			
Observation start time	106393819.184000	106392838.41565			
Observation start date	2001-05-16T09:49:15	2001-05-16T09:33:58			
Observation end time	106403819.184000	106404410.6661			
Observation end date	2001-05-16T12:35:55	2001-05-16T12:46:50			
Read mode	TIMED	TIMED			

## 2.3 Aspect





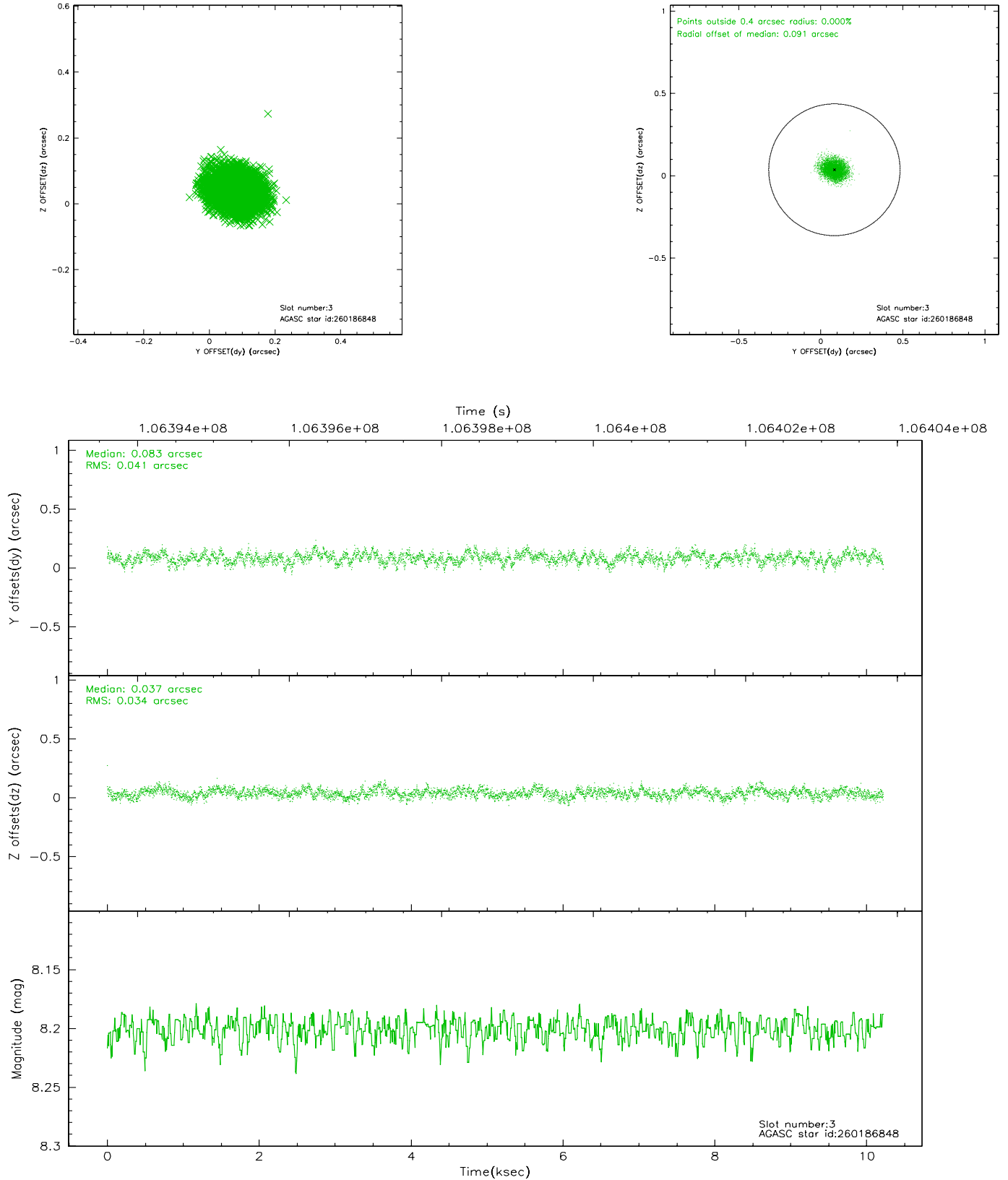
### Slot Statistics

slot	status	id	mag	n_pts	med_dy	med_dz	dr1	dr2	ra	dec	mean_y	mean_z
0	FID	ACIS-I-2	7.17	2493	-0.036	-0.009	0.009	0.014	0.000000	0.000000	-756.82	-994.16
1	FID	ACIS-I-4	7.15	2493	-0.086	0.032	0.005	0.009	0.000000	0.000000	2156.92	911.67
2	FID	ACIS-I-5	7.22	2493	0.021	0.047	0.009	0.014	0.000000	0.000000	-1809.52	909.14
3	GUIDE	260186848	8.20	4985	0.083	0.037	0.056	0.090	178.929956	22.642824	1980.06	1884.19
4	GUIDE	260188192	9.18	4972	0.003	0.039	0.096	0.147	179.330149	22.976535	240.72	2309.63
5	GUIDE	260182304	9.23	4986	-0.146	-0.146	0.069	0.112	178.643100	23.810976	-975.98	-1253.75
6	GUIDE	260188952	9.57	4986	0.160	0.027	0.090	0.147	178.359974	22.948174	2124.32	-299.40
7	GUIDE	260186296	9.58	4983	-0.098	0.046	0.100	0.161	179.246996	23.604894	-1475.79	810.30

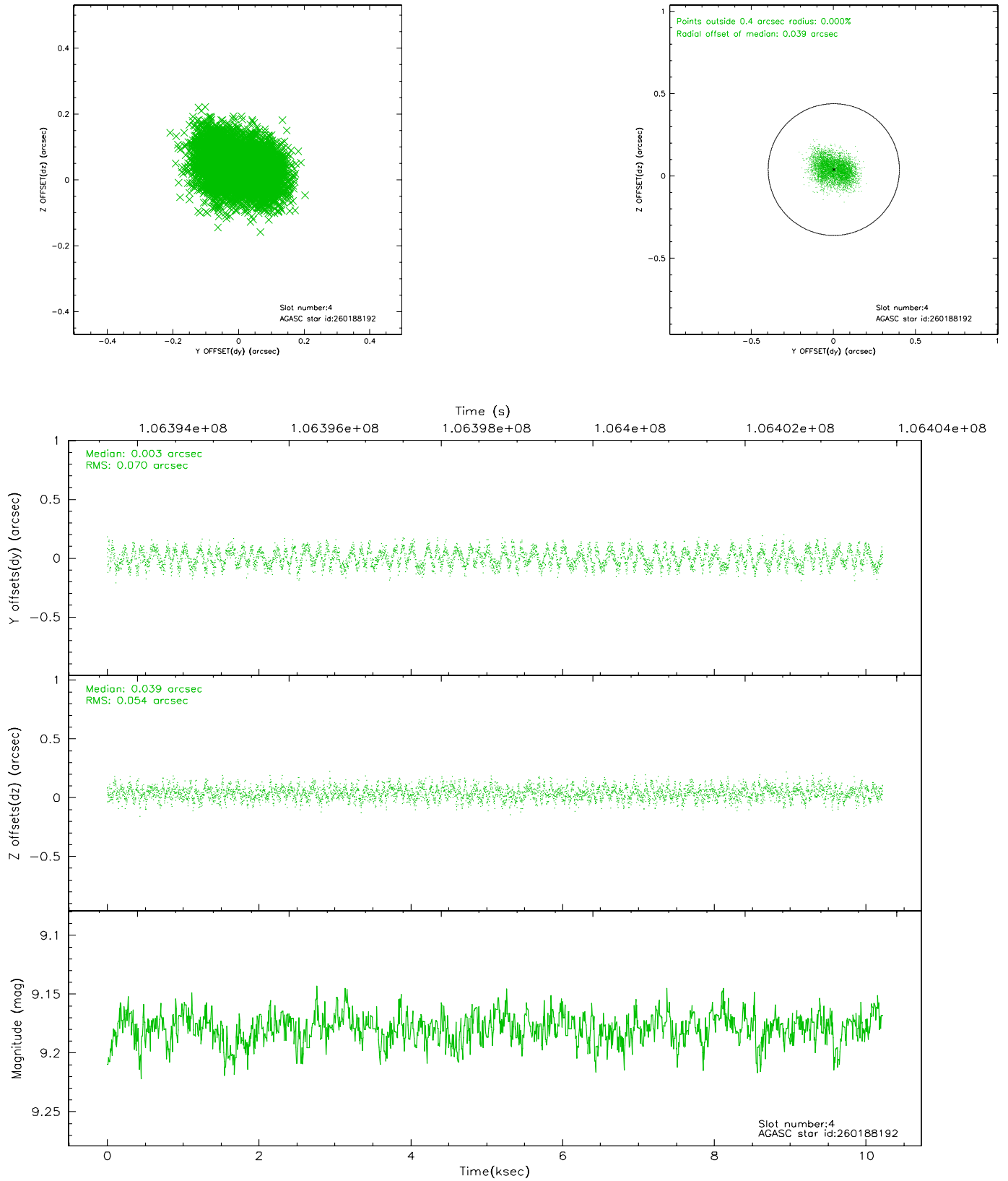


## 2.4 Star Slots

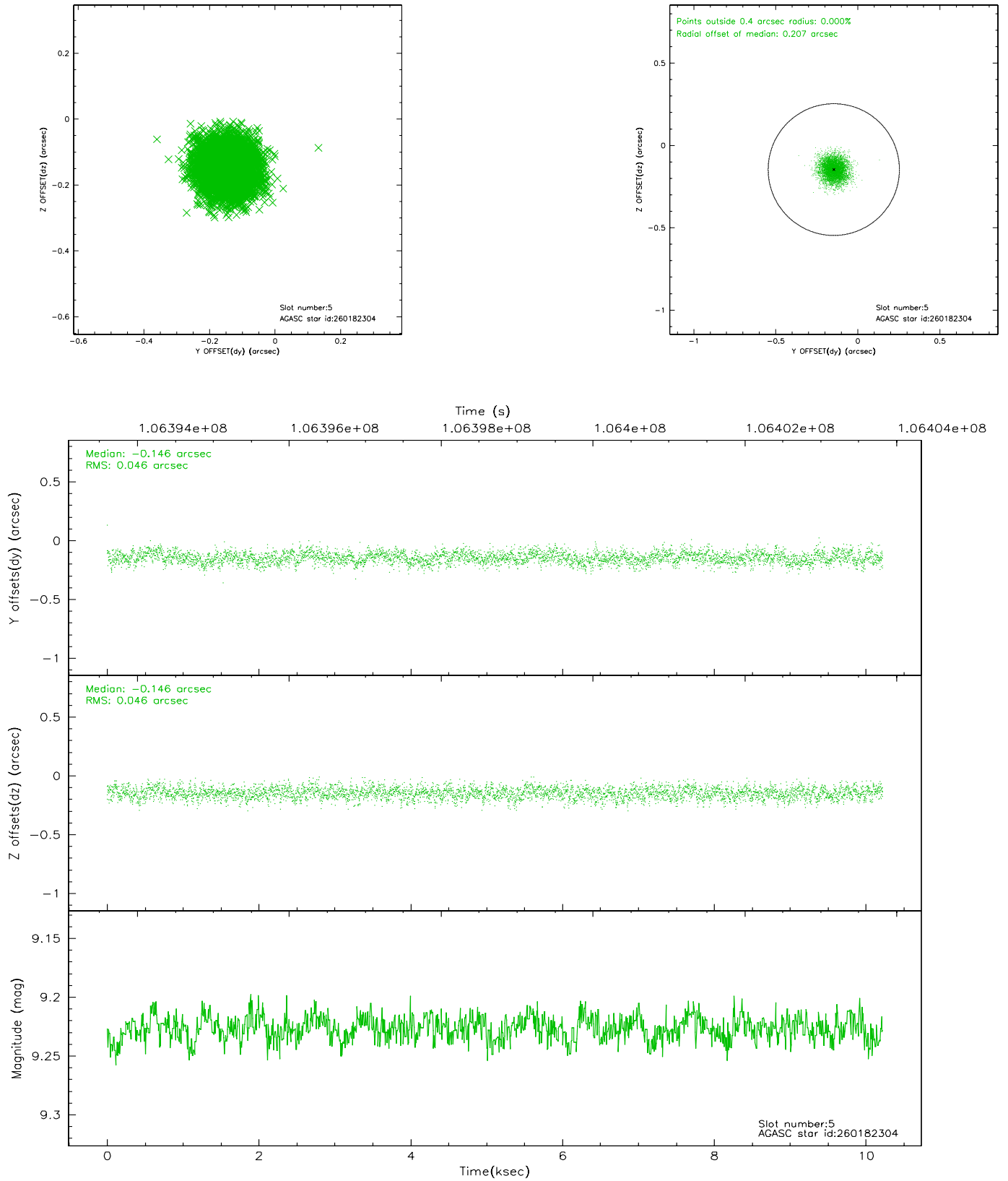
### 2.4.1 Slot 3



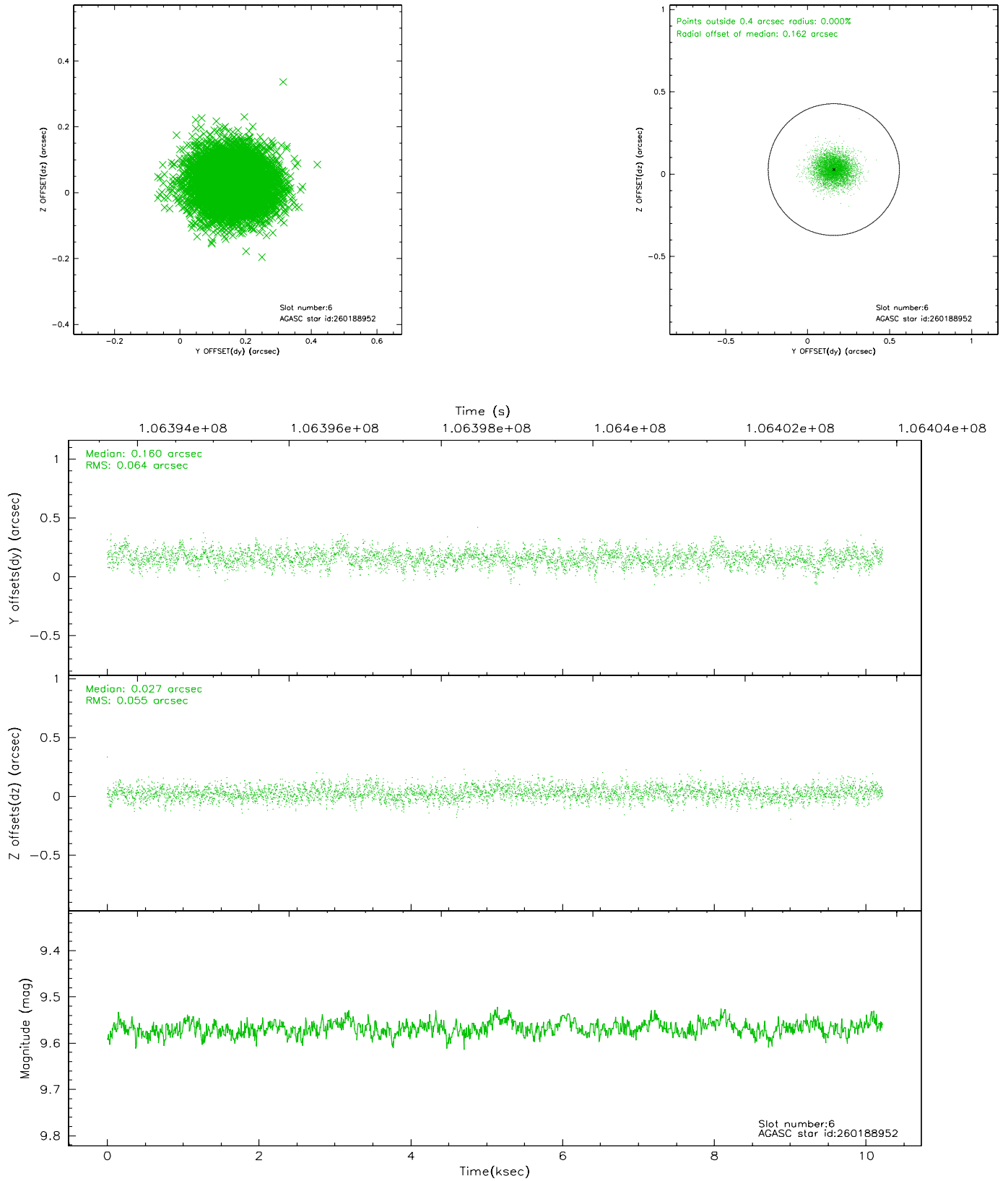
## 2.4.2 Slot 4



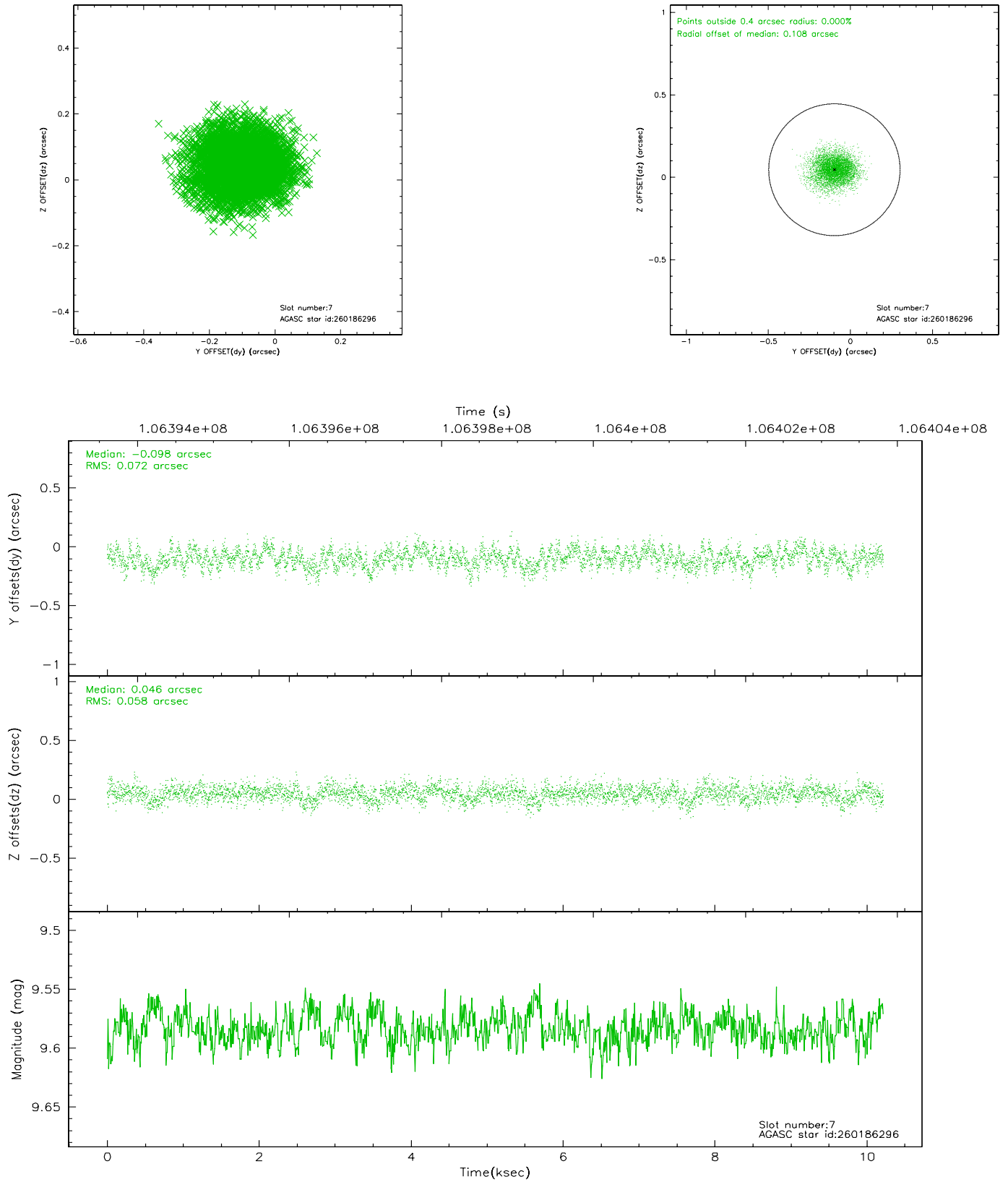
### 2.4.3 Slot 5



## 2.4.4 Slot 6

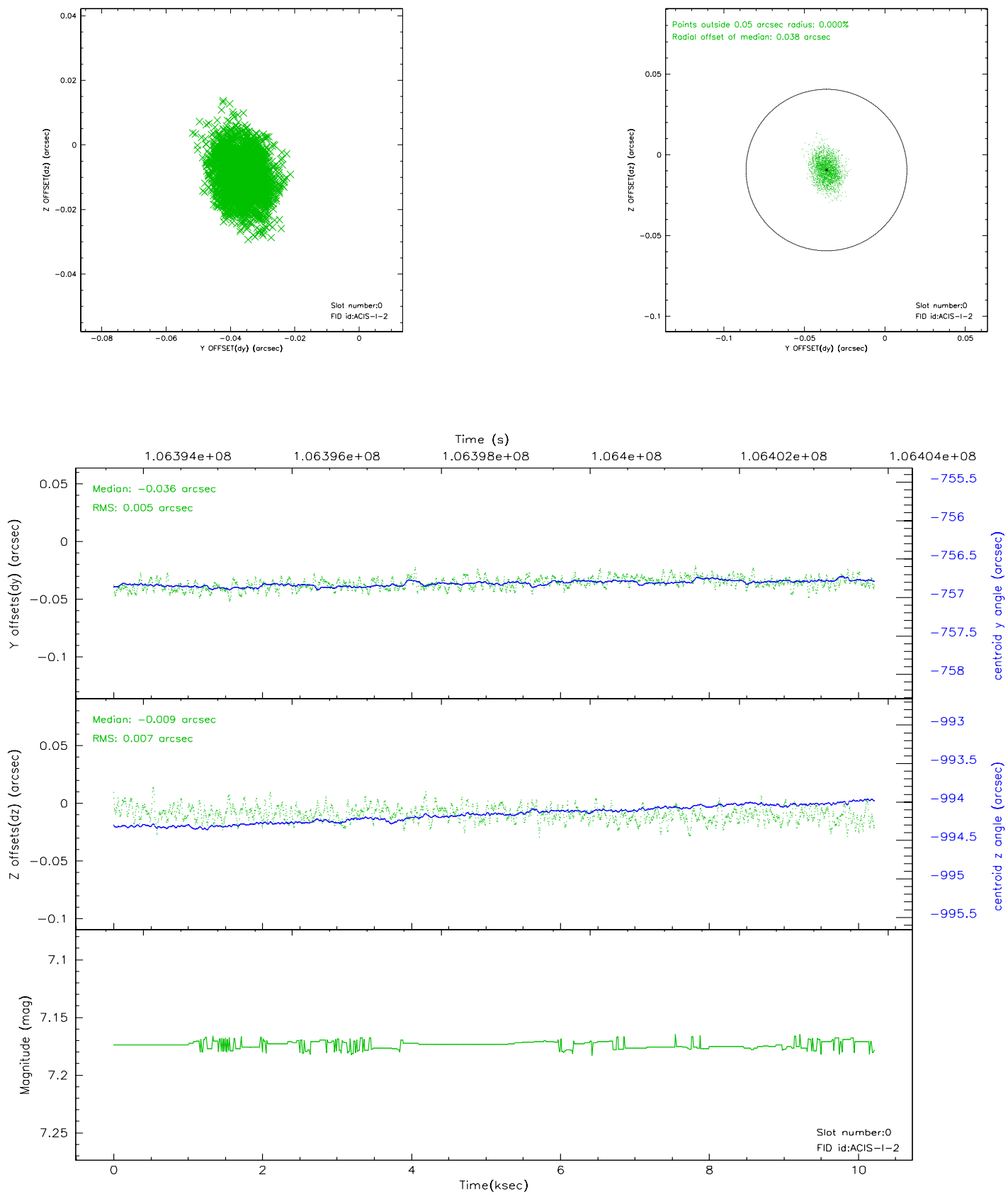


## 2.4.5 Slot 7

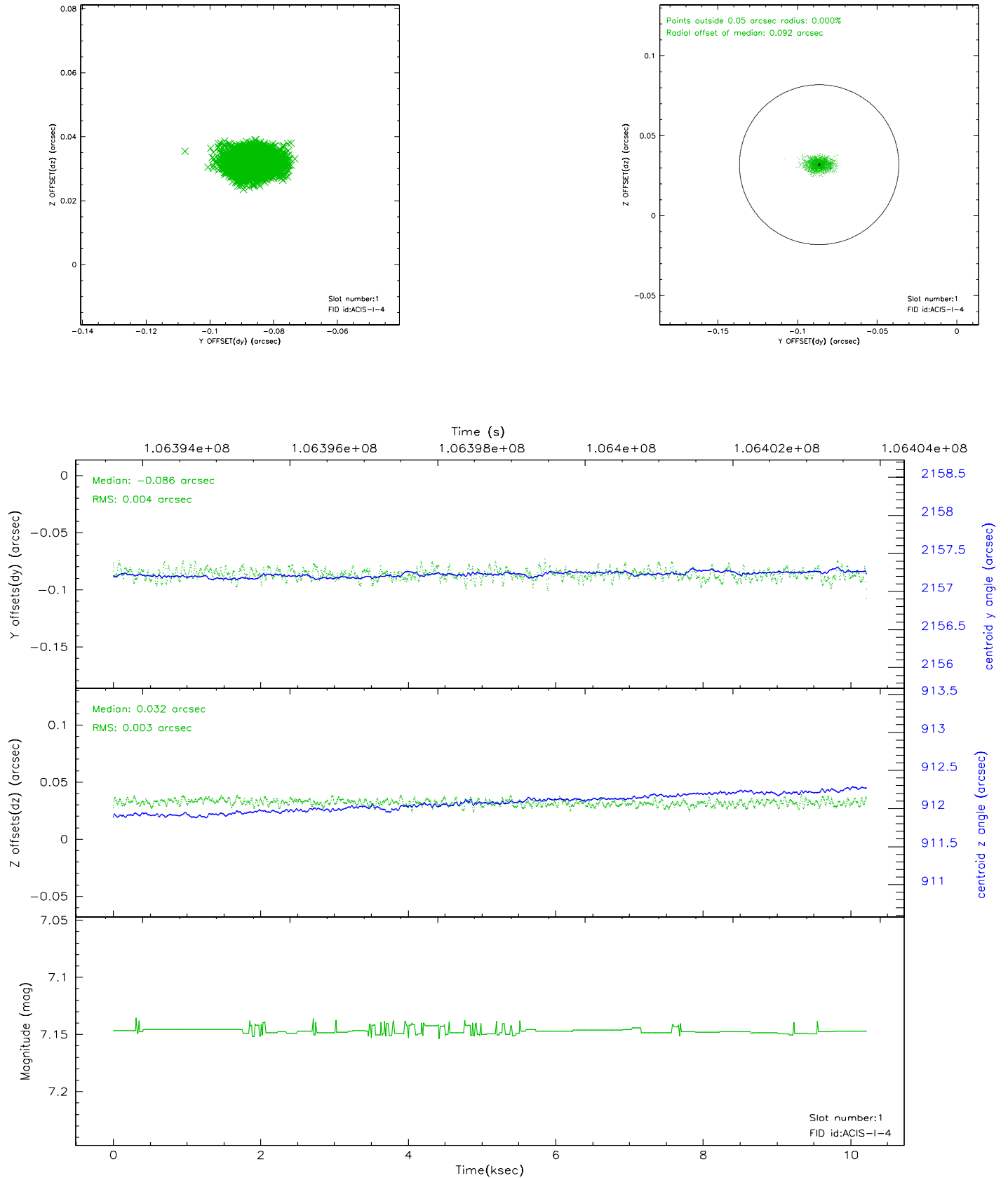


## 2.5 FID Slots

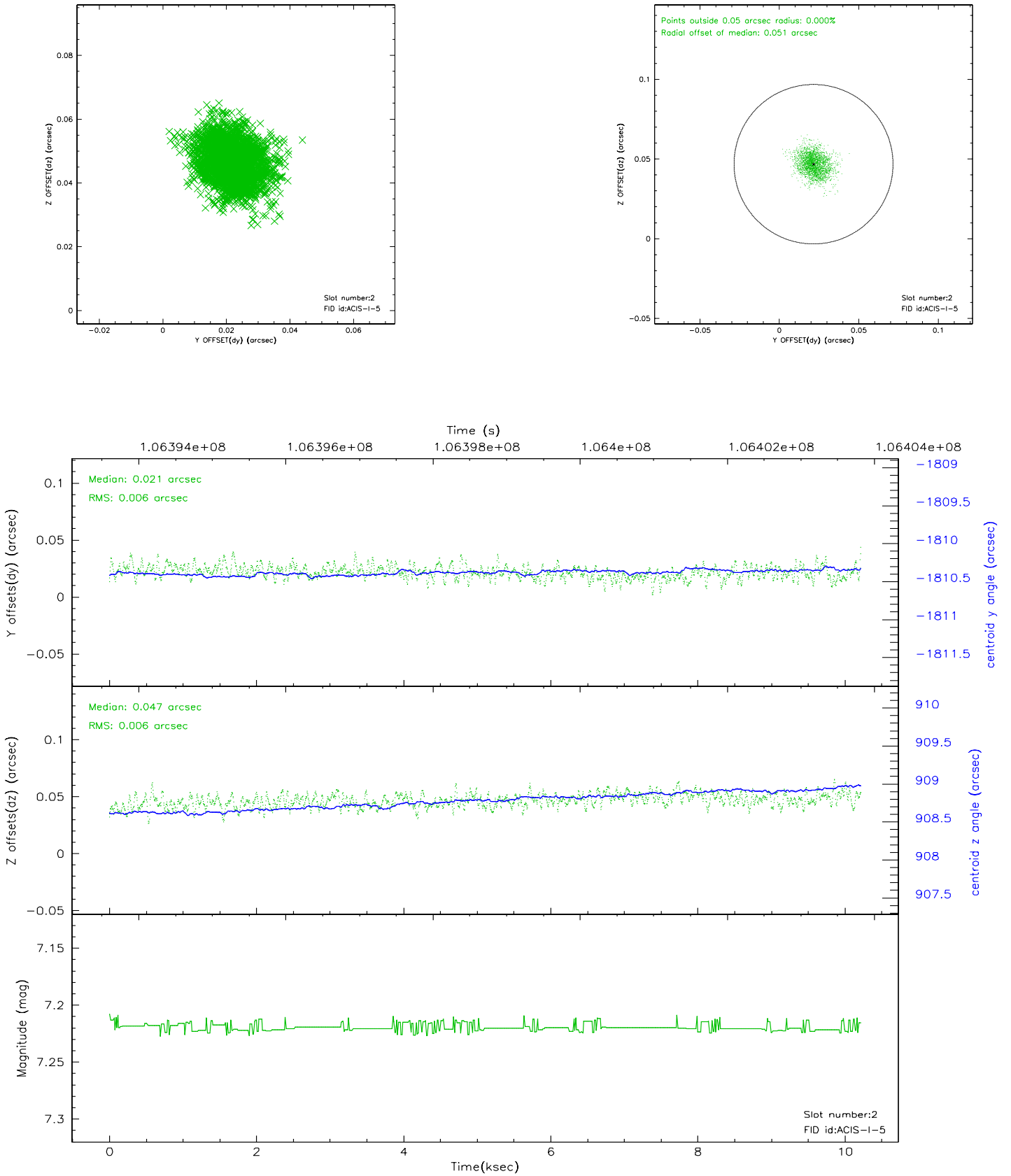
### 2.5.1 Slot 0



## 2.5.2 Slot 1

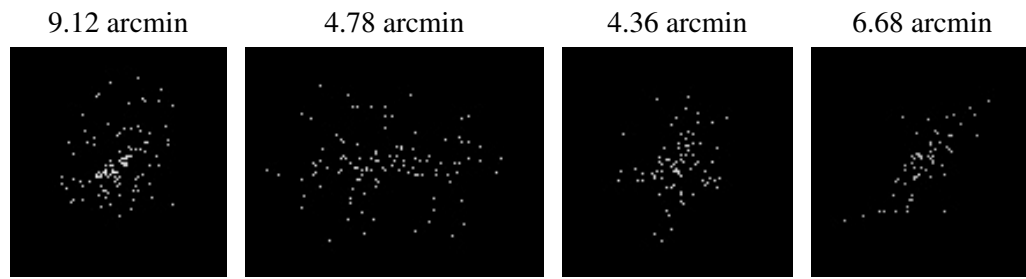


### 2.5.3 Slot 2





### 3 Point Sources



## A Summary

### A.1 Status

V&V Scientist	Jen Lauer
V&V Date (YYYY-MM-DD)	2006.11.21
V&V Edition	1
V&V Disposition and Status	OK
V&V Charge Time	9.87

### A.2 Comments