

V&V Reference Report

L2 ASCDS Version : 7.6.9

Observation 1657 - L2 Version 001
Chandra X-Ray Center

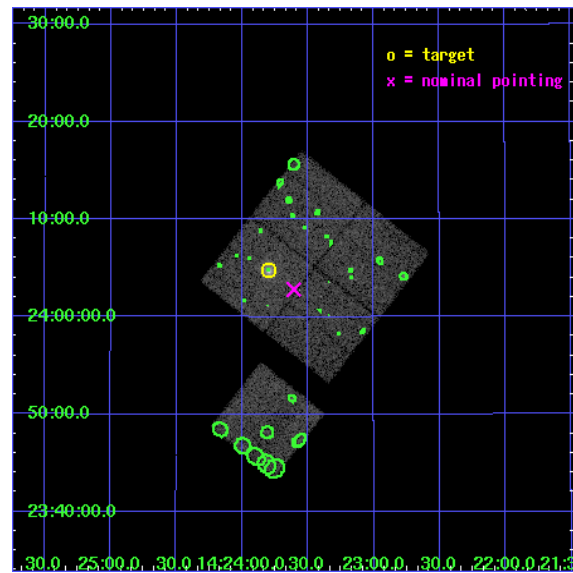
L2 Processing Date : Nov 25 2006

Contents

1	Front	2
2	OBI	3
2.1	OBI	3
2.1.1	Images	3
2.1.2	Bias	3
2.1.3	Parameters	4
2.1.4	Events	4
2.2	Compared Parameters	5
2.3	Aspect	6
2.4	Star Slots	9
2.4.1	Slot 3	9
2.4.2	Slot 4	10
2.4.3	Slot 5	11
2.4.4	Slot 6	12
2.4.5	Slot 7	13
2.5	FID Slots	14
2.5.1	Slot 0	14
2.5.2	Slot 1	15
2.5.3	Slot 2	16
3	Point Sources	17
A	Summary	18
A.1	Status	18
A.2	Comments	18

1 Front

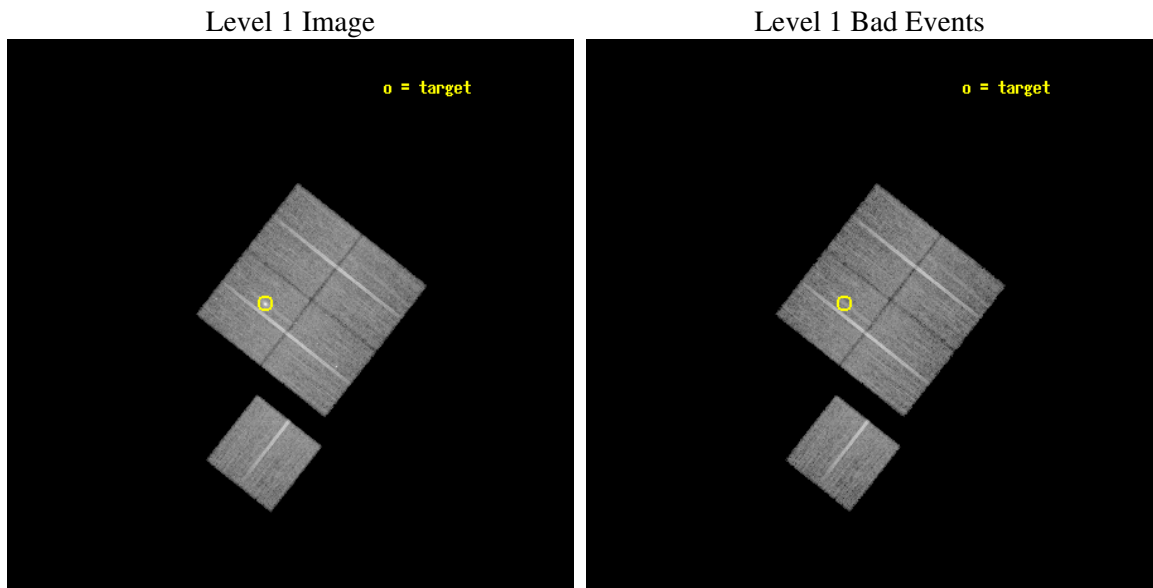
seq_num	800125
obs_id	1657
title	DETERMINATION OF H0 AND Q0, 2000 PART 2
observer	DR. LEON VANSPEYBROECK
object	MACS J1423.8+2404
dtcycle	0
cycle	P
ra_targ	215.95
dec_targ	24.079
ra_nom	215.90183207441
dec_nom	24.046995209812
roll_nom	218.18716841591
revision	2
ontime	18770.459003672
livetime	18525.209138178
ontime0	18770.459003657
ontime1	18773.599963903
ontime2	18770.45897375
ontime3	18770.459003672
ontime6	18770.458993658
l2events	65199



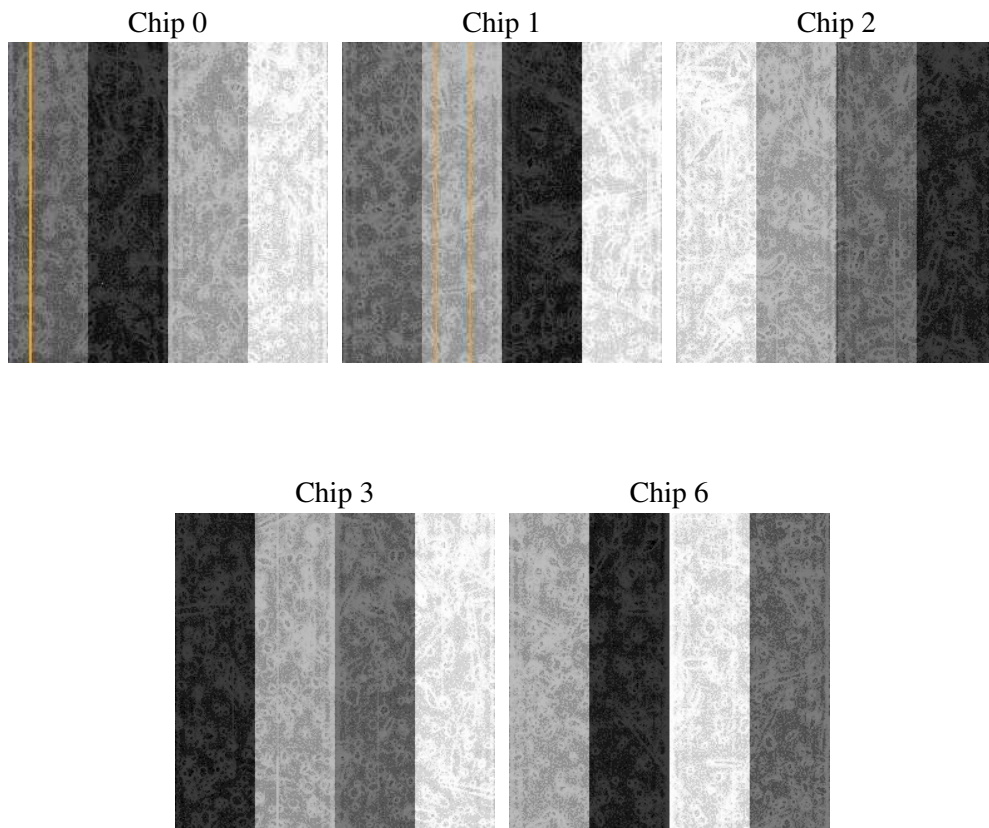
2 OBI

2.1 OBI

2.1.1 Images



2.1.2 Bias



2.1.3 Parameters

obi_num	0
ascdsver	7.6.9
caldbver	3.2.4
date	2006-11-25T04:05:01
revision	2

sched_exp_time	19000.000000
ontime	18776.902091146
ontime0	18776.902091131
ontime1	18780.043051377
ontime2	18776.902061224
ontime3	18776.902091146
ontime6	18776.902081132
l1events	605412

2.1.4 Events

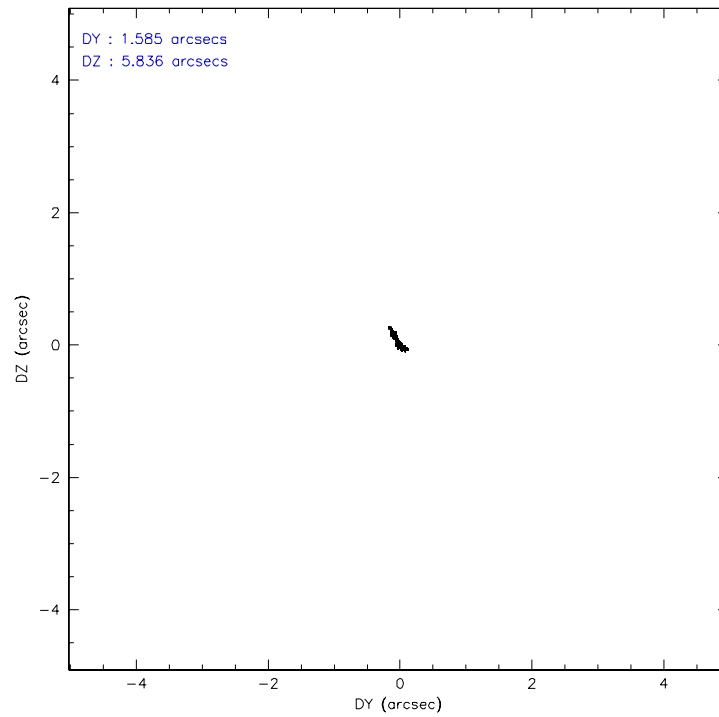
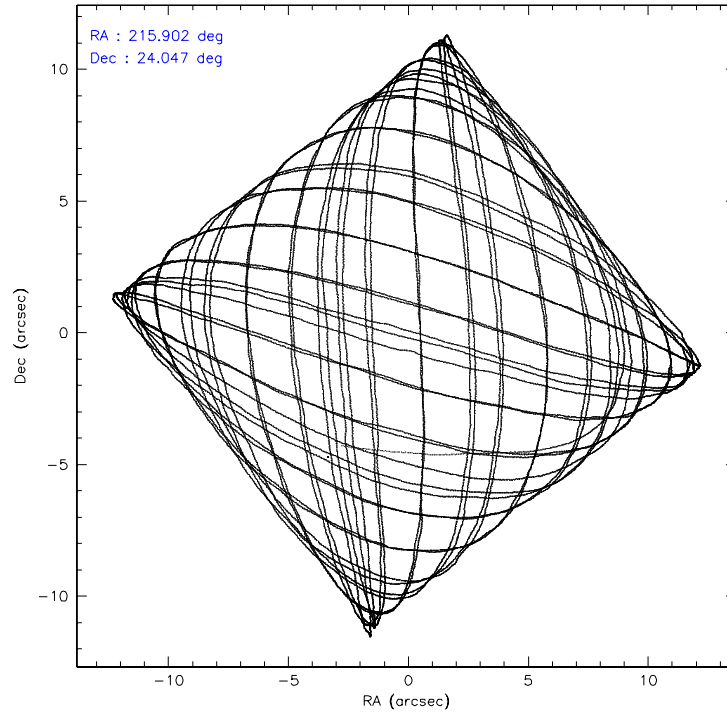
	ccd 0	ccd 1	ccd 2	ccd 3	ccd 6
level 1 events	114331	115249	126897	126551	122384
rejected events	100076	100040	112569	108229	108565
rejected %	87%	86%	88%	85%	88%

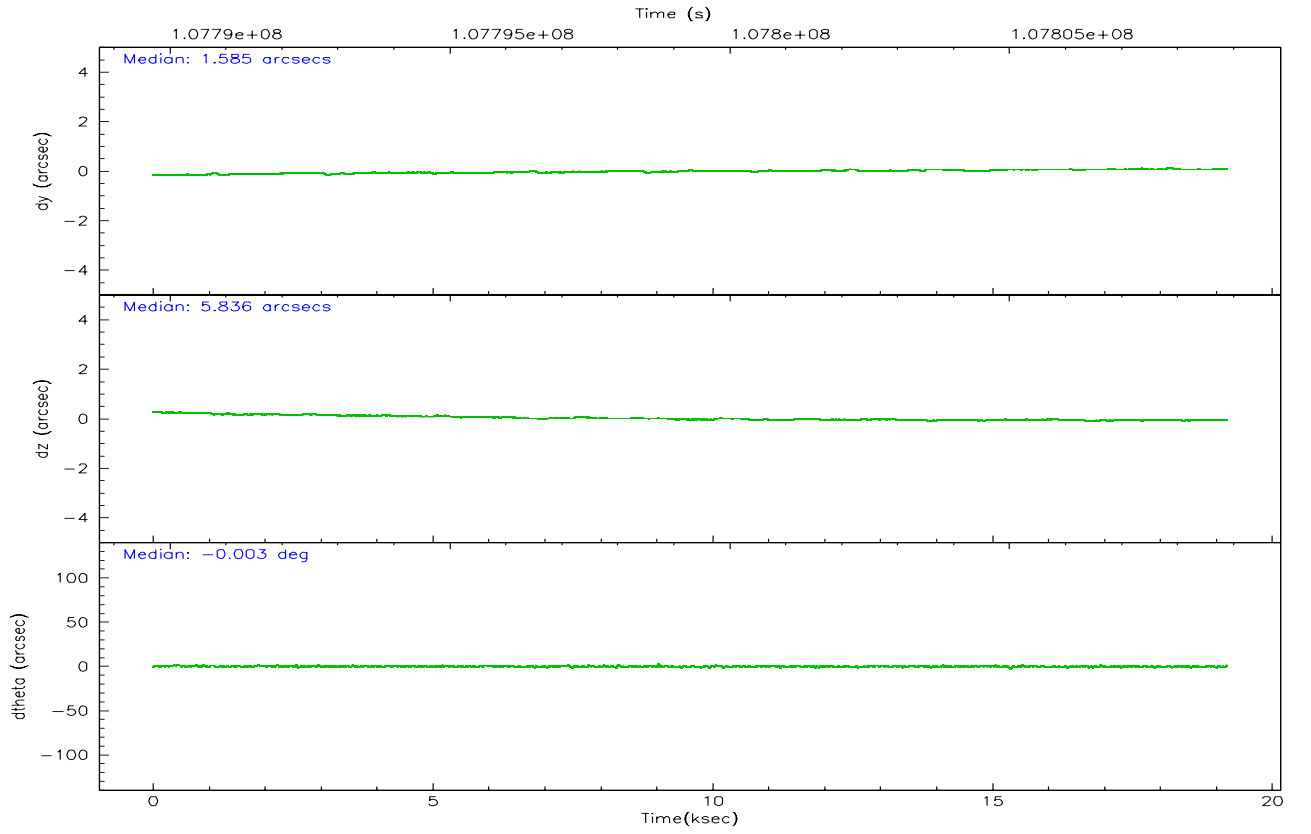
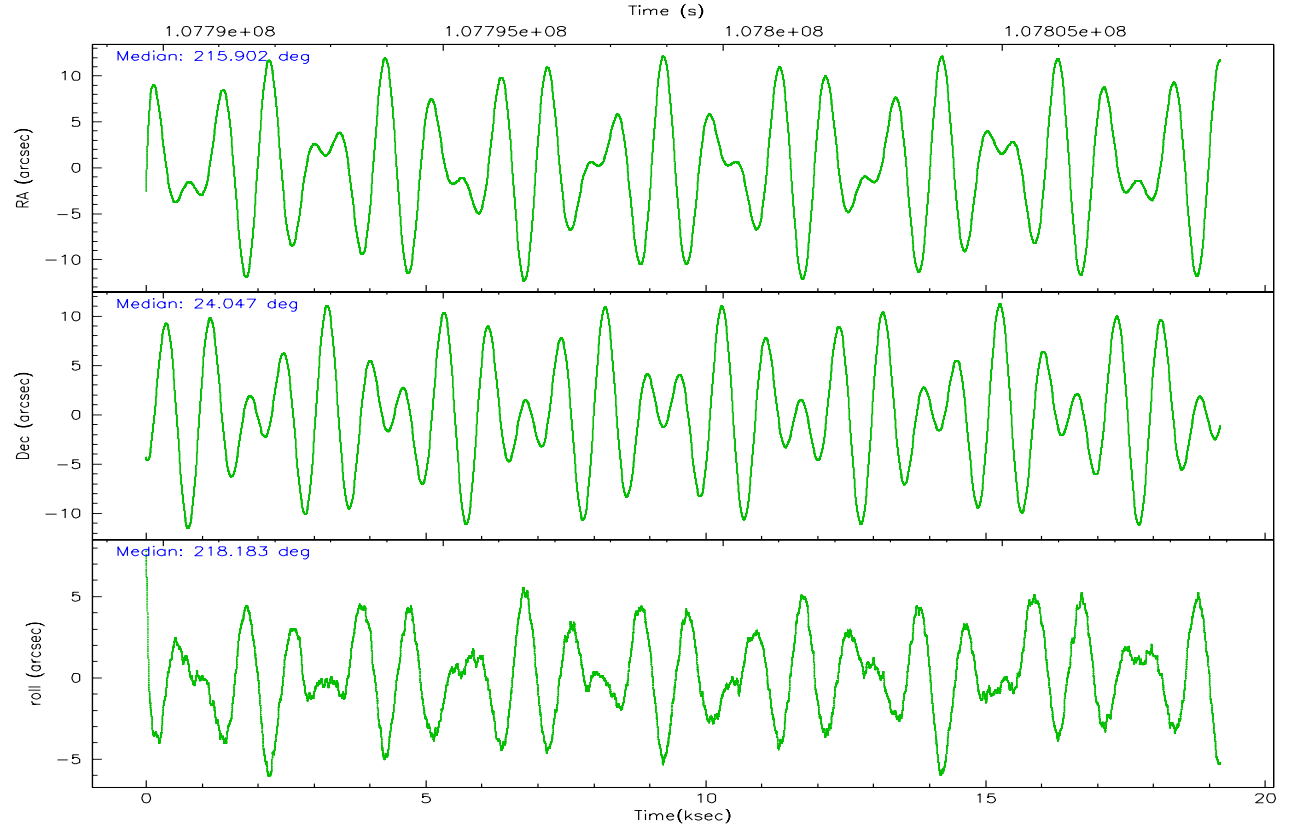
	ccd 0	ccd 1	ccd 2	ccd 3	ccd 6
grade 0 events	6108	6146	6281	9481	5672
	5%	5%	4%	7%	4%
grade 1 events	69	56	65	75	52
	0%	0%	0%	0%	0%
grade 2 events	2977	3053	3102	3229	2776
	2%	2%	2%	2%	2%
grade 3 events	1405	1561	1292	1484	1389
	1%	1%	1%	1%	1%
grade 4 events	1331	1577	1271	1506	1333
	1%	1%	1%	1%	1%
grade 5 events	4416	4695	4129	4801	5027
	3%	4%	3%	3%	4%
grade 6 events	2441	2878	2388	2626	2654
	2%	2%	1%	2%	2%
grade 7 events	95584	95283	108369	103349	103481
	83%	82%	85%	81%	84%

2.2 Compared Parameters

Parameter	Planned	Actual	Parameter	Planned	Actual
Instrument	ACIS	ACIS	Obspar format version number	6	6
Detector	ACIS-01236	ACIS-01236	Obspar file type	PREDICTED	ACTUAL
Grating	NONE	NONE	Obspar update status	NONE	UPDATED
Data mode	VFAINT	VFAINT	Number of optional ACIS chips dropped	0	0
Observation mode	POINTING	POINTING	On-chip summing requested	N	N
Pointing RA	215.912962	215.9018320744121	Subarray requested	NONE	NONE
Pointing Dec	24.072485	24.04699520981157	Alternating exposures requested	N	N
Pointing Roll	217.973943	218.1871684159117	Primary exposure time	0.000000	3.1
SIM focus pos (mm)	-0.782348	-0.7809083437167272			
SIM defocus (mm)	0	0.001439871863259334			
SIM translation stage pos (mm)	-225.840463	-225.848371962627			
SIM translation stage offset (mm)	-7.752	-7.744081040302689			
Observation start time	107789887.184000	107789060.66999			
Observation start date	2001-06-01T13:37:03	2001-06-01T13:24:20			
Observation end time	107808887.184000	107809247.53328			
Observation end date	2001-06-01T18:53:43	2001-06-01T19:00:47			
Read mode	TIMED	TIMED			

2.3 Aspect



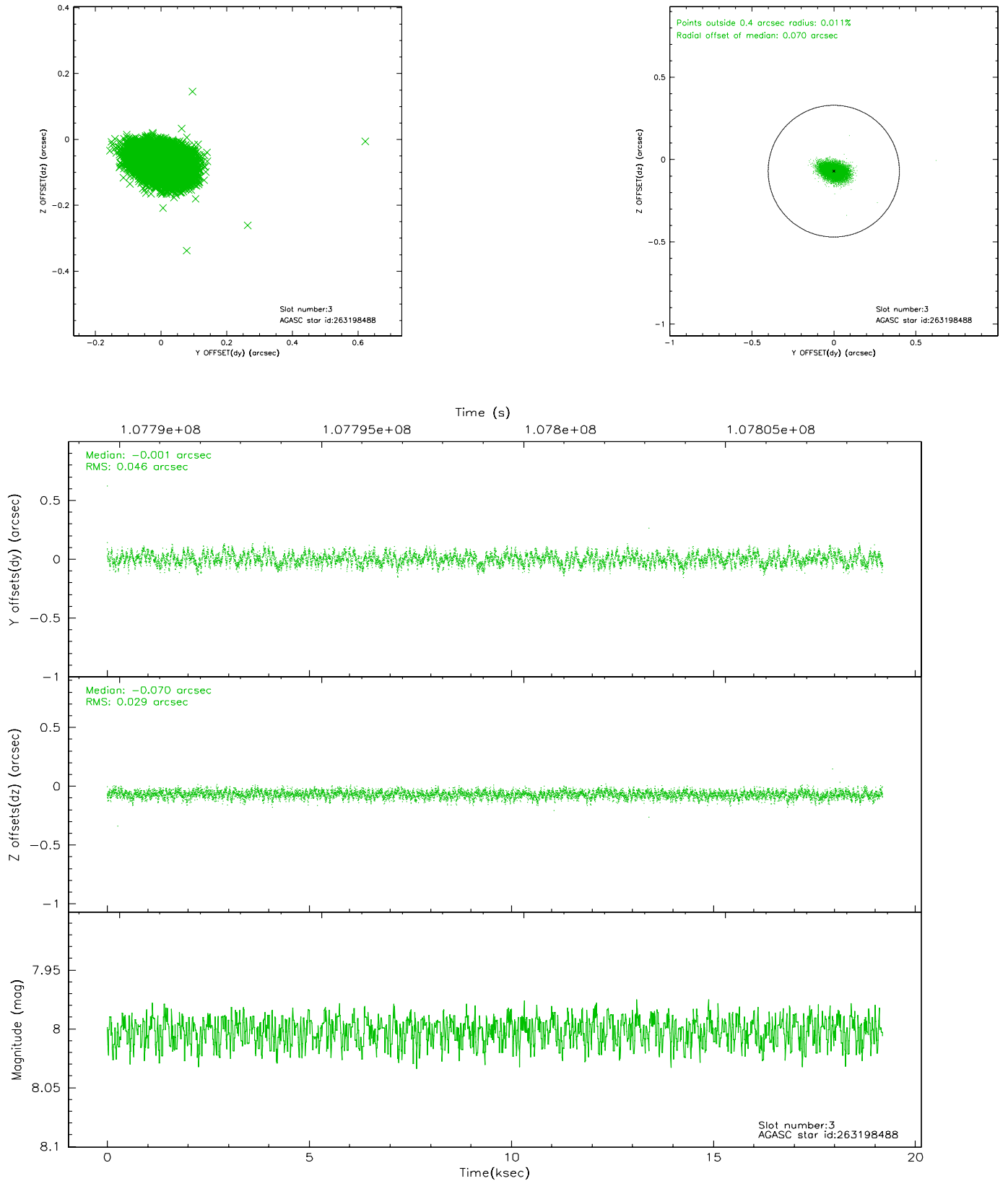


Slot Statistics

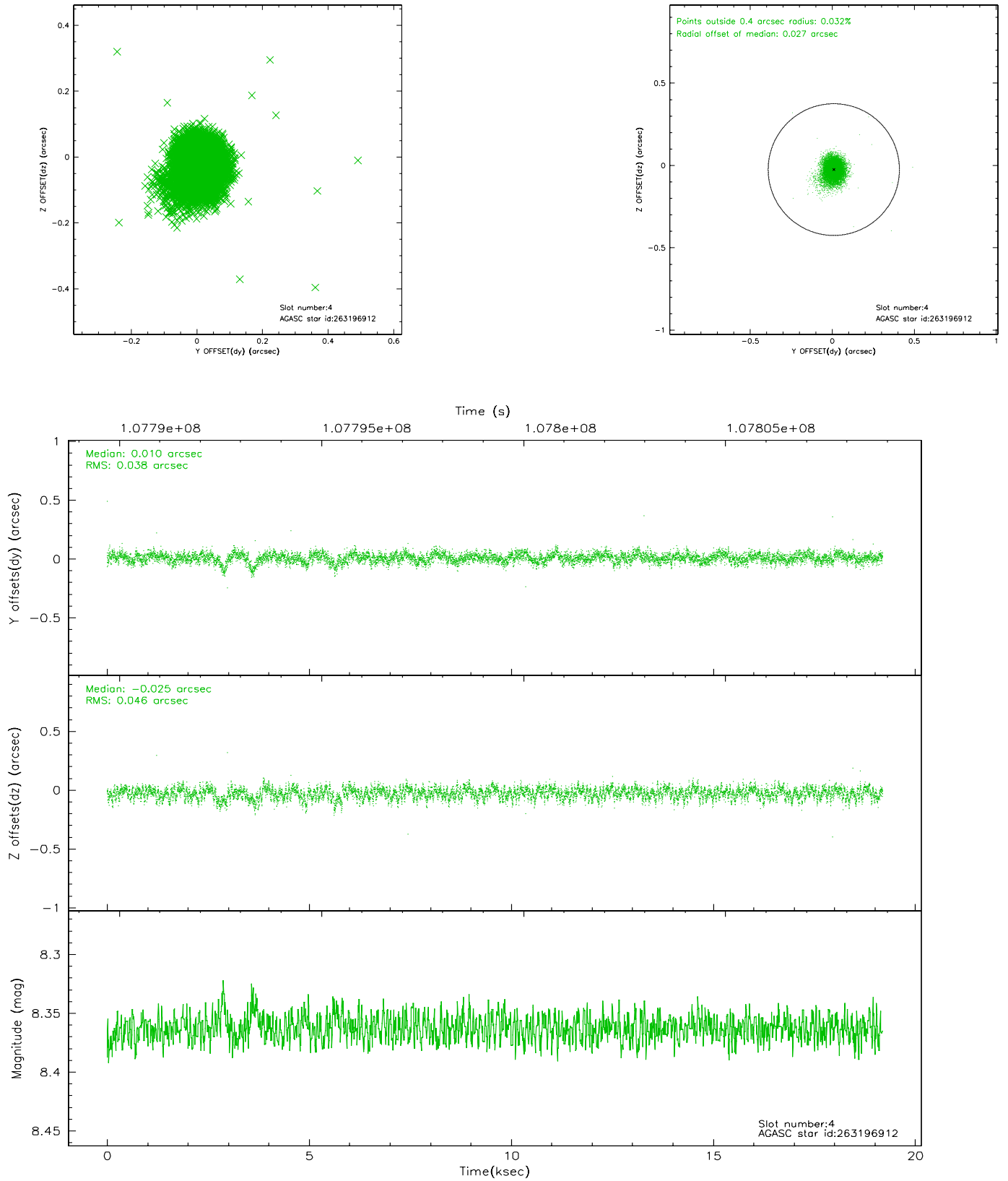
slot	status	id	mag	n_pts	med_dy	med_dz	dr1	dr2	ra	dec	mean_y	mean_z
0	FID	ACIS-I-2	7.17	4682	-0.037	-0.035	0.008	0.014	0.000000	0.000000	-756.49	-993.58
1	FID	ACIS-I-4	7.15	4682	-0.065	0.039	0.005	0.010	0.000000	0.000000	2157.40	912.51
2	FID	ACIS-I-5	7.22	4682	0.001	0.065	0.008	0.014	0.000000	0.000000	-1809.63	909.59
3	GUIDE	263198488	8.00	9363	-0.001	-0.070	0.058	0.094	215.302096	24.133252	1445.76	-1410.59
4	GUIDE	263196912	8.36	9360	0.010	-0.025	0.061	0.102	215.746107	24.106688	357.27	-434.75
5	GUIDE	263198456	8.73	9363	0.047	-0.106	0.056	0.091	215.550984	23.637397	1904.78	499.05
6	GUIDE	263194568	8.86	9358	-0.172	-0.076	0.063	0.100	216.120487	24.742057	-2017.40	-1483.17
7	GUIDE	263200584	9.68	9355	0.118	0.280	0.104	0.167	215.715152	23.220906	2402.59	2014.09

2.4 Star Slots

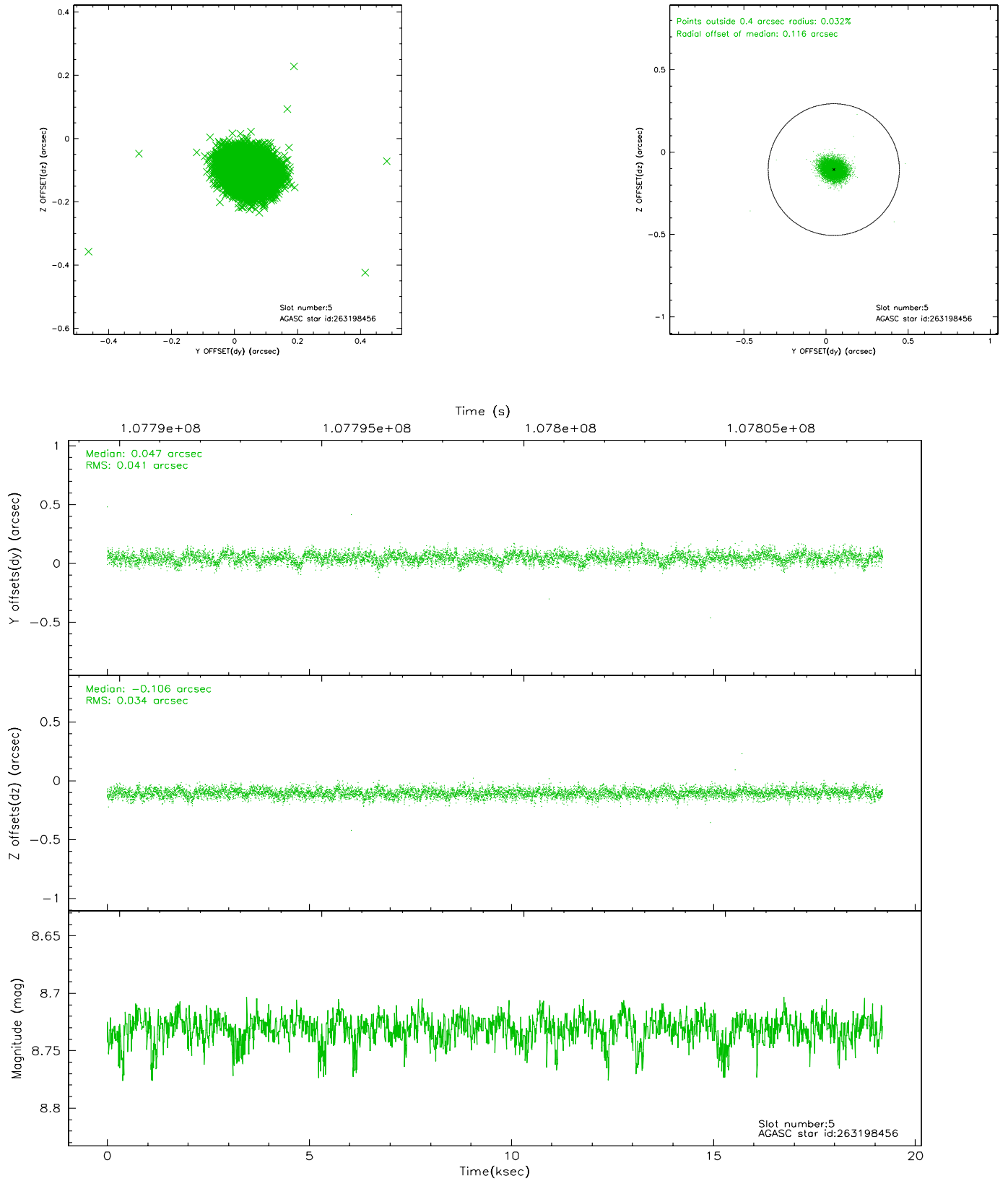
2.4.1 Slot 3



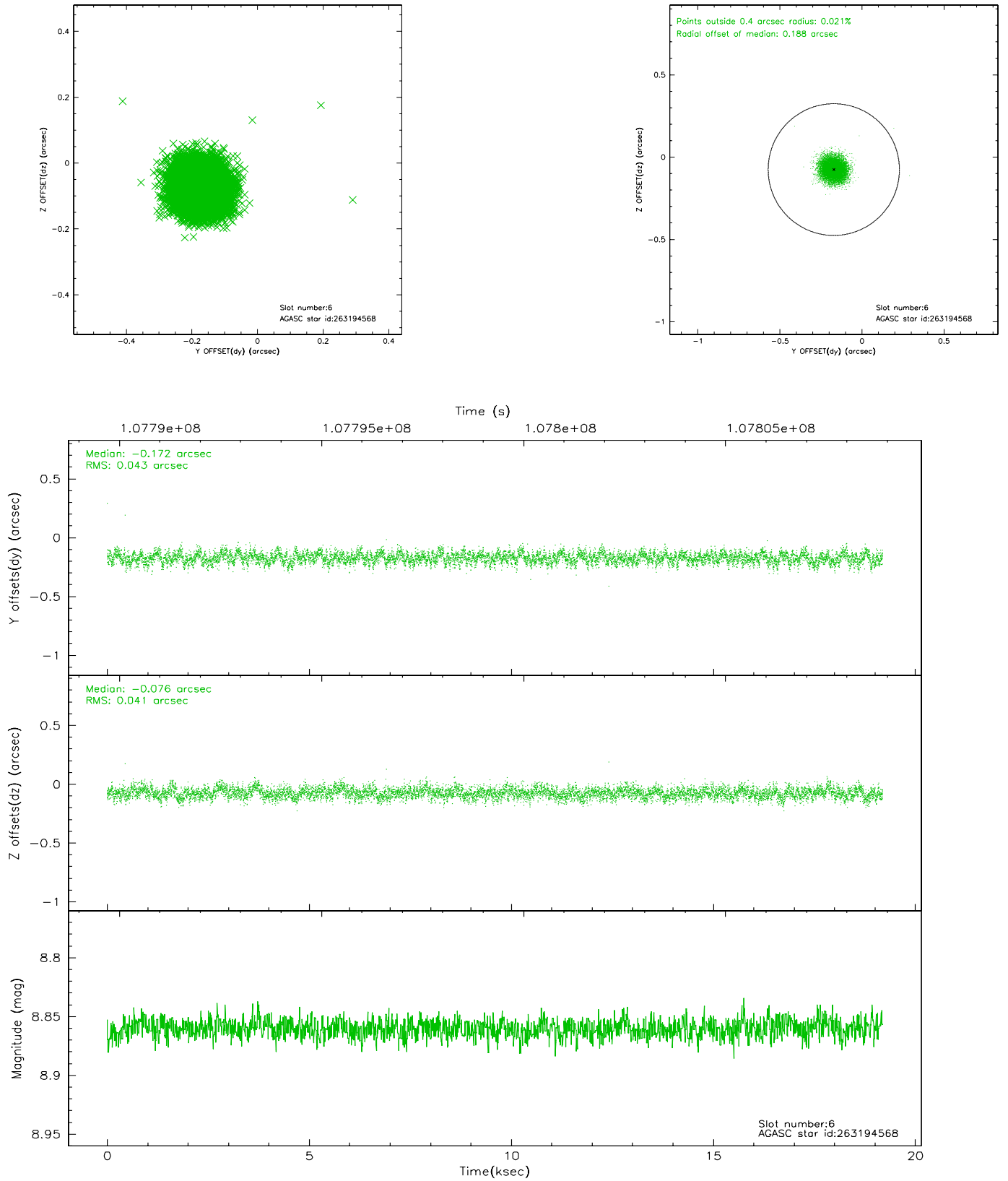
2.4.2 Slot 4



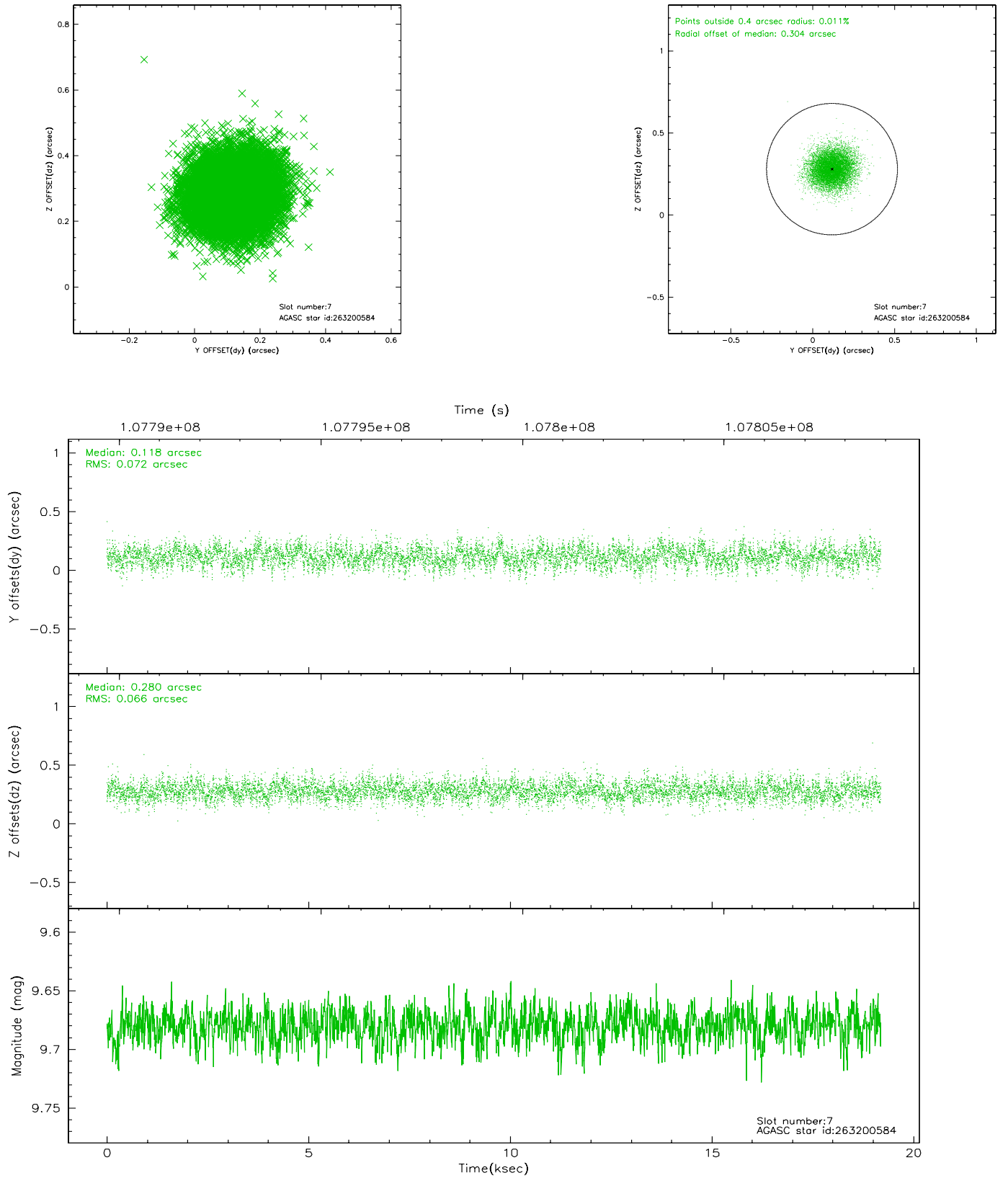
2.4.3 Slot 5



2.4.4 Slot 6

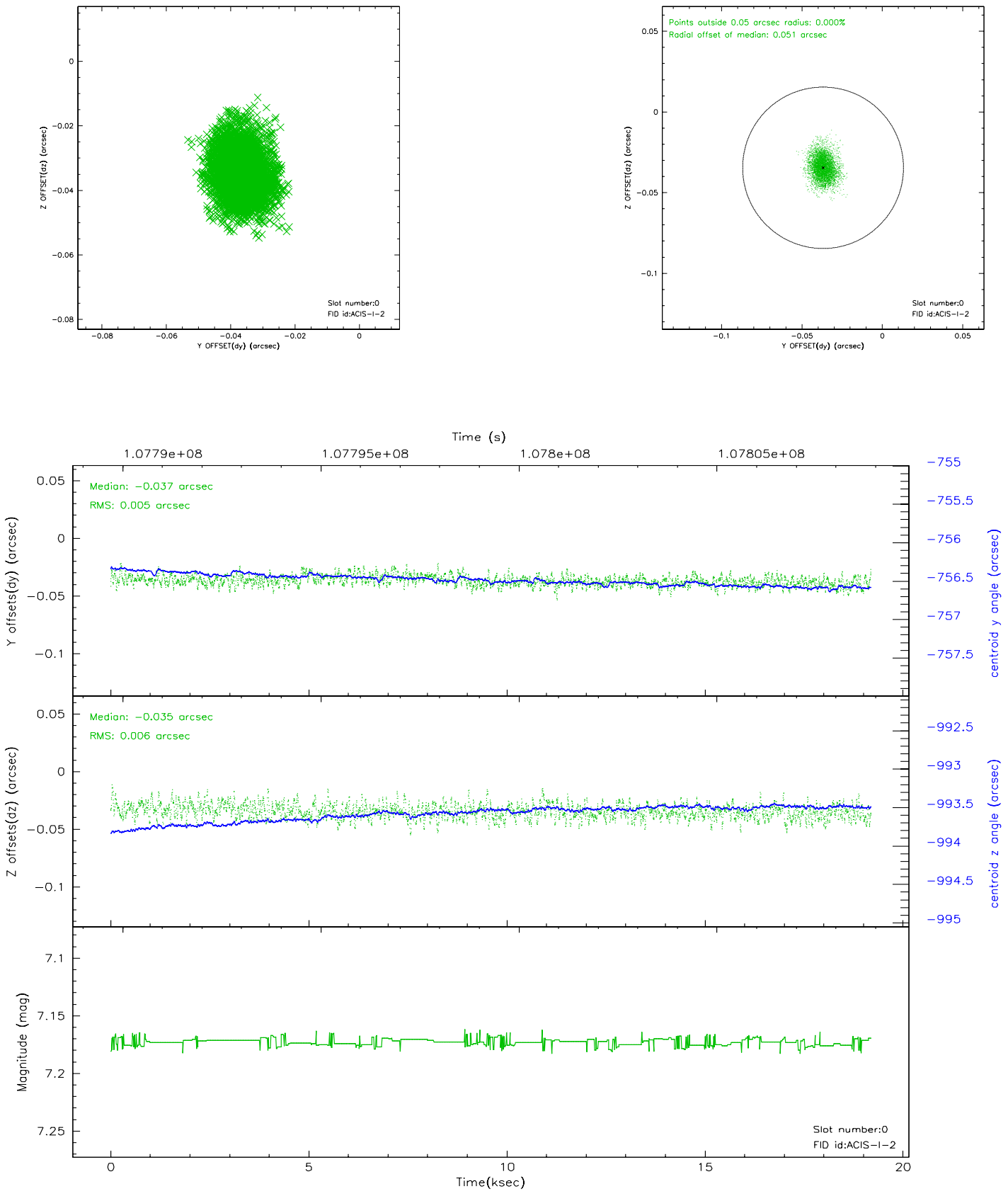


2.4.5 Slot 7

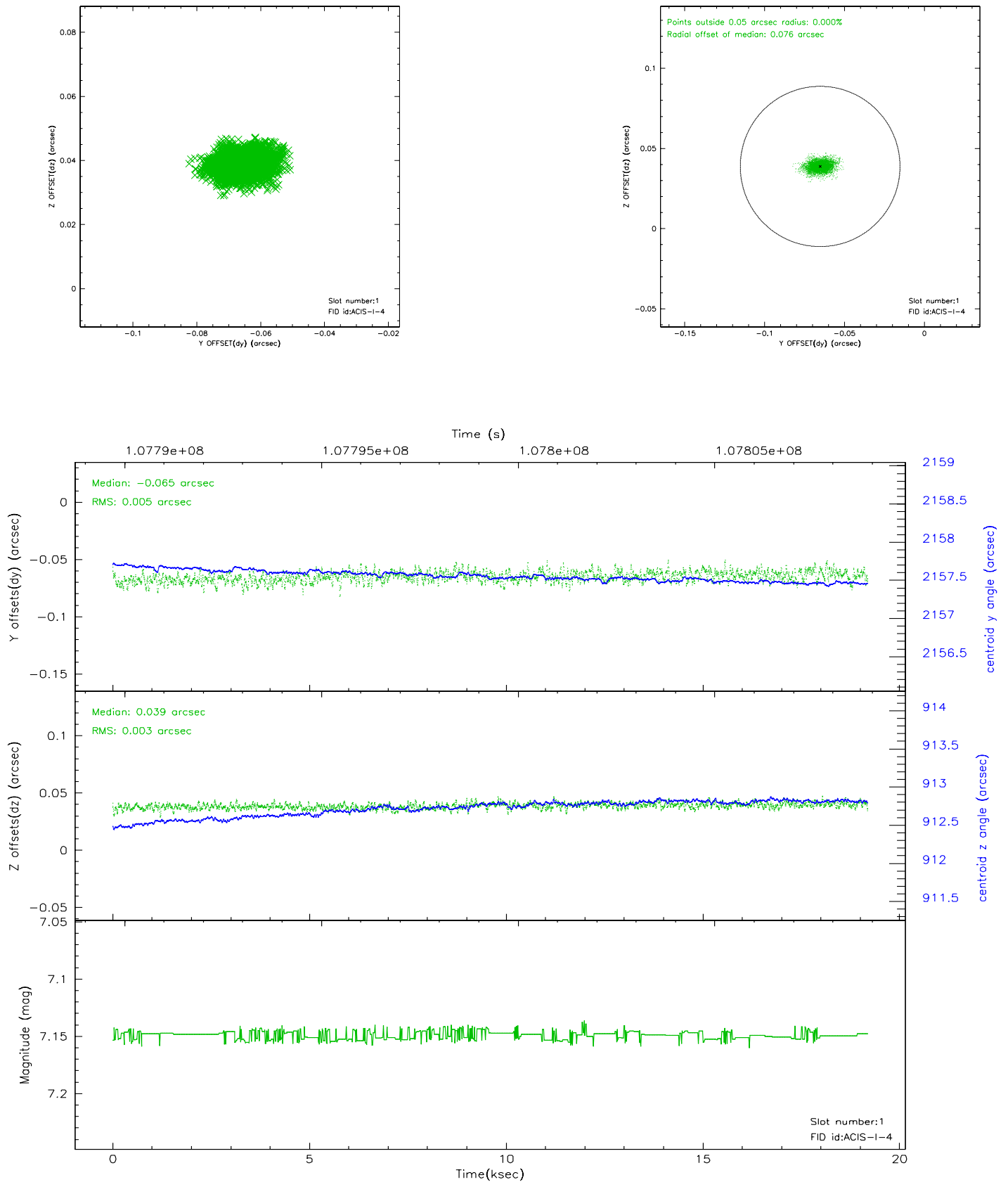


2.5 FID Slots

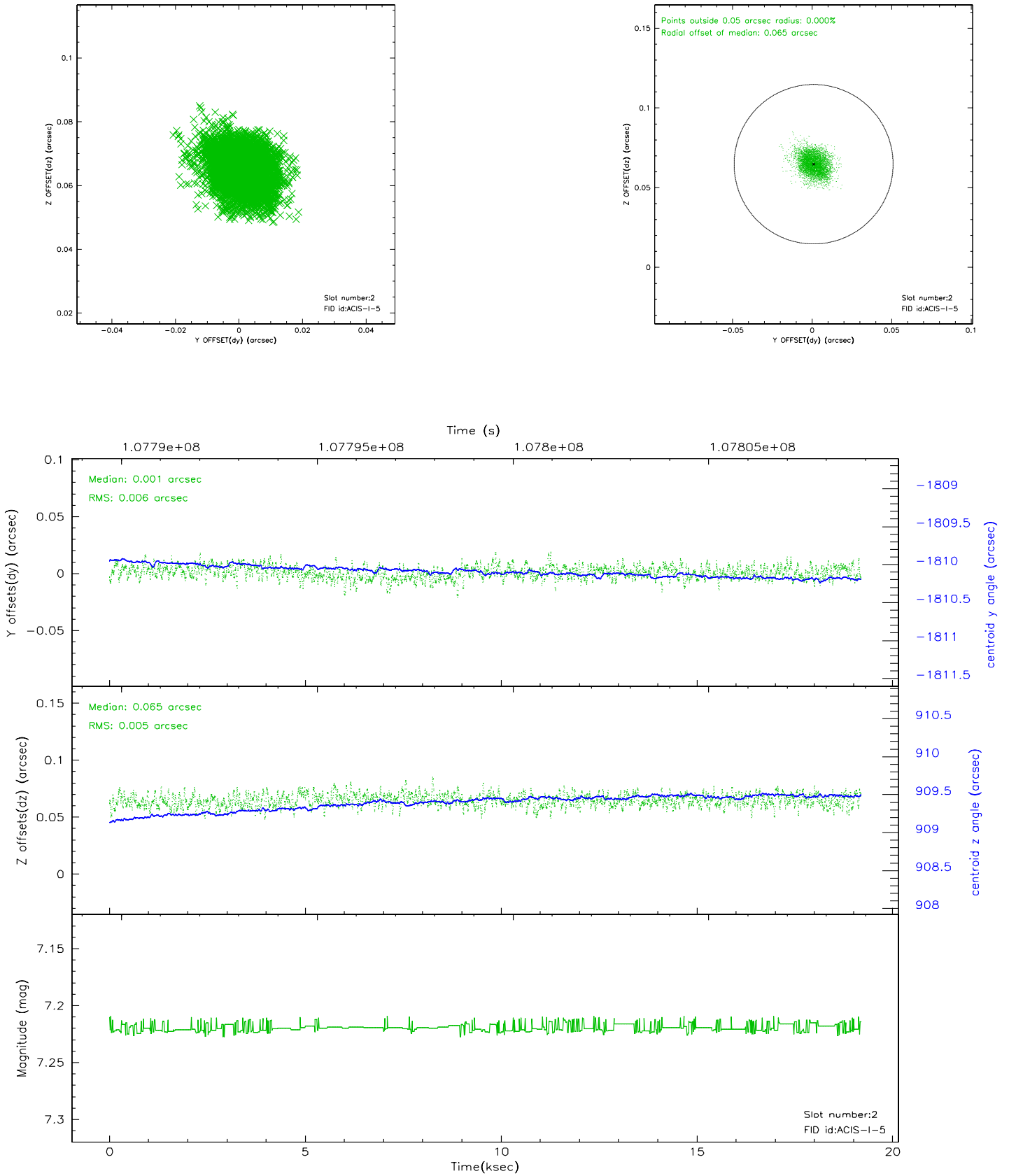
2.5.1 Slot 0



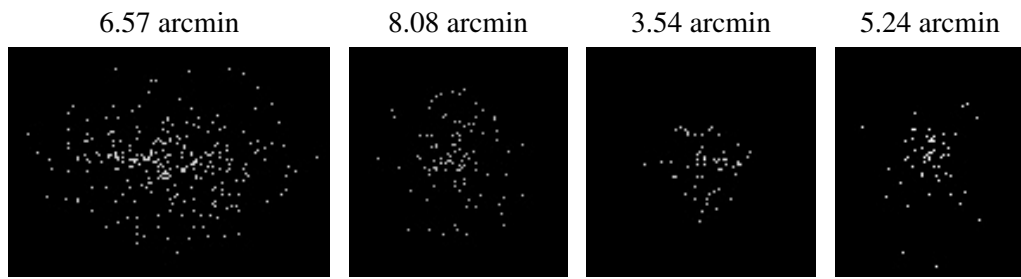
2.5.2 Slot 1



2.5.3 Slot 2



3 Point Sources



A Summary

A.1 Status

V&V Scientist	Jen Lauer
V&V Date (YYYY-MM-DD)	2006.11.27
V&V Edition	1
V&V Disposition and Status	OK
V&V Charge Time	18.773

A.2 Comments