

# V&V Reference Report

## L2 ASCDS Version : 7.6.9

Observation 1655 - L2 Version 001  
Chandra X-Ray Center

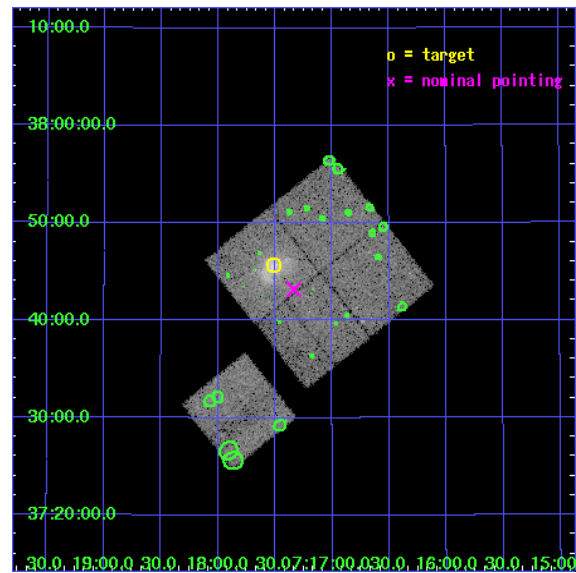
L2 Processing Date : Nov 4 2006

## Contents

<b>1</b>	<b>Front</b>	<b>2</b>
<b>2</b>	<b>OBI</b>	<b>3</b>
2.1	OBI . . . . .	3
2.1.1	Images . . . . .	3
2.1.2	Bias . . . . .	3
2.1.3	Parameters . . . . .	4
2.1.4	Events . . . . .	4
2.2	Compared Parameters . . . . .	5
2.3	Aspect . . . . .	6
2.4	Star Slots . . . . .	9
2.4.1	Slot 3 . . . . .	9
2.4.2	Slot 4 . . . . .	10
2.4.3	Slot 5 . . . . .	11
2.4.4	Slot 6 . . . . .	12
2.4.5	Slot 7 . . . . .	13
2.5	FID Slots . . . . .	14
2.5.1	Slot 0 . . . . .	14
2.5.2	Slot 1 . . . . .	15
2.5.3	Slot 2 . . . . .	16
<b>3</b>	<b>Point Sources</b>	<b>17</b>
<b>A</b>	<b>Summary</b>	<b>18</b>
A.1	Status . . . . .	18
A.2	Comments . . . . .	18

# 1 Front

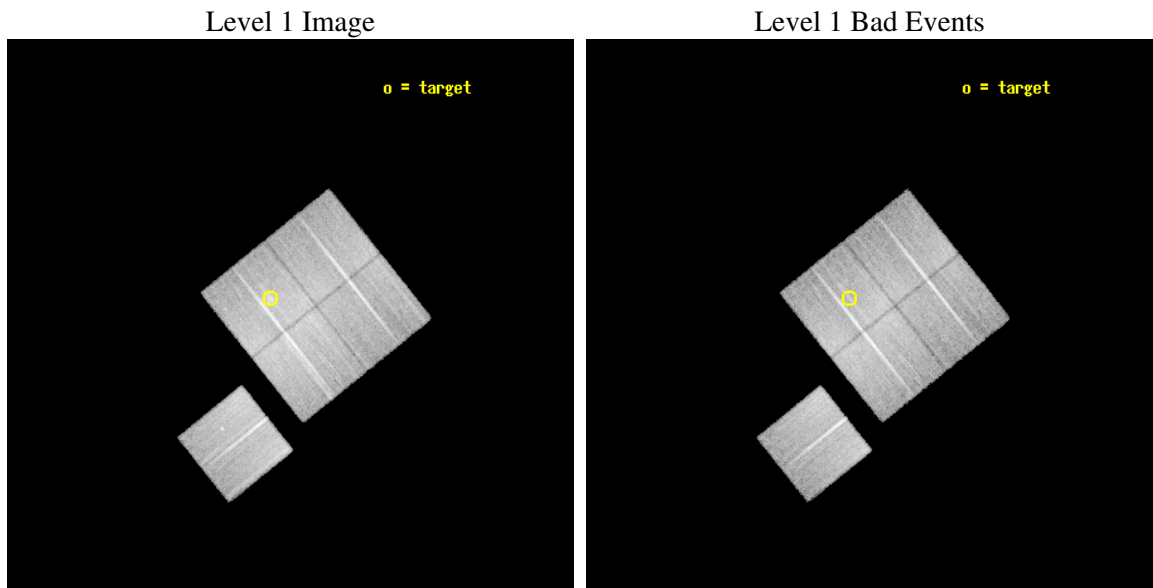
seq_num	800123
obs_id	1655
title	DETERMINATION OF H0 AND Q0, 2000 PART 2
observer	DR. LEON VANSPEYBROECK
object	MACS J0717.5+3745
dtcycle	0
cycle	P
ra_targ	109.379167
dec_targ	37.761
ra_nom	109.33409949741
dec_nom	37.719828024893
roll_nom	231.31024015542
revision	2
ontime	20134.499961287
livetime	19871.427896489
ontime0	20134.499961287
ontime1	20131.35900104
ontime2	20134.499961287
ontime3	20134.499961287
ontime6	20134.499961287
l2events	91195



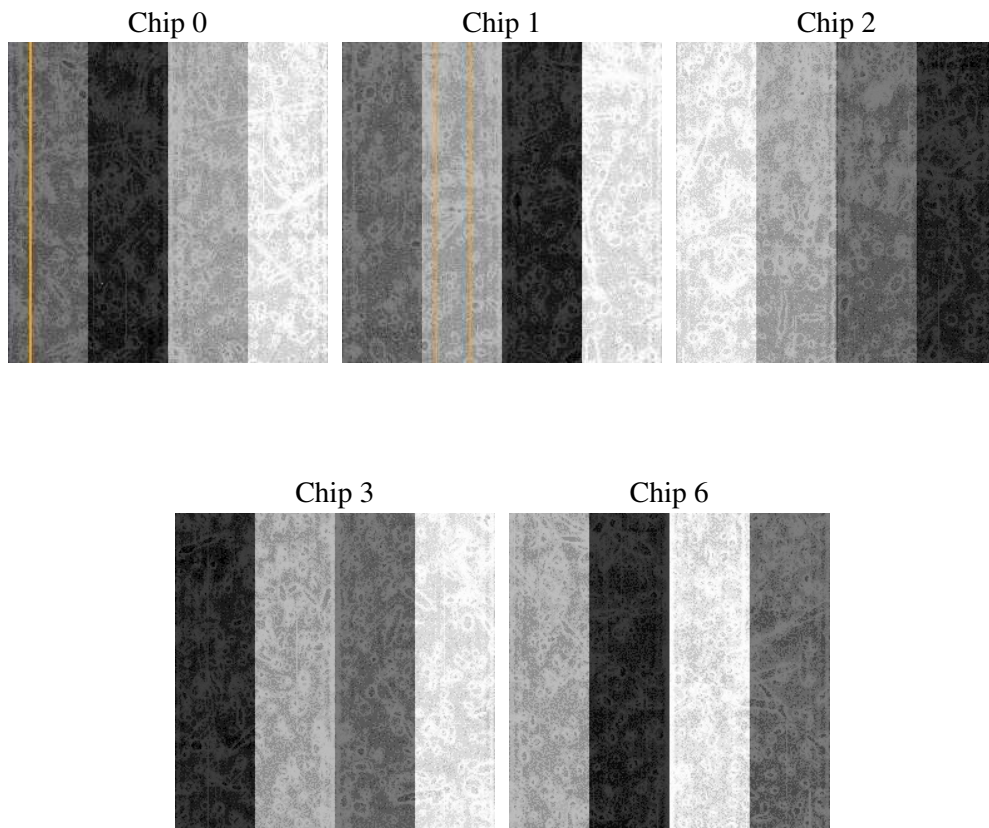
## 2 OBI

### 2.1 OBI

#### 2.1.1 Images



#### 2.1.2 Bias



### 2.1.3 Parameters

obi_num	0
ascdsver	7.6.9
caldbver	3.2.3
date	2006-11-04T12:18:59
revision	2

sched_exp_time	20000.000000
ontime	20517.024110064
ontime0	20517.024130002
ontime1	20513.883169755
ontime2	20517.024110064
ontime3	20517.024110064
ontime6	20520.165150076
l1events	921233

### 2.1.4 Events

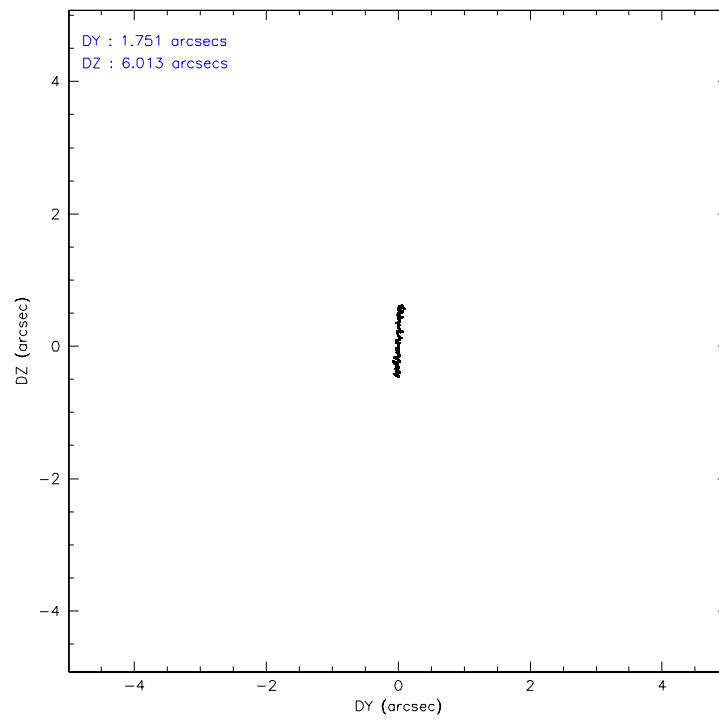
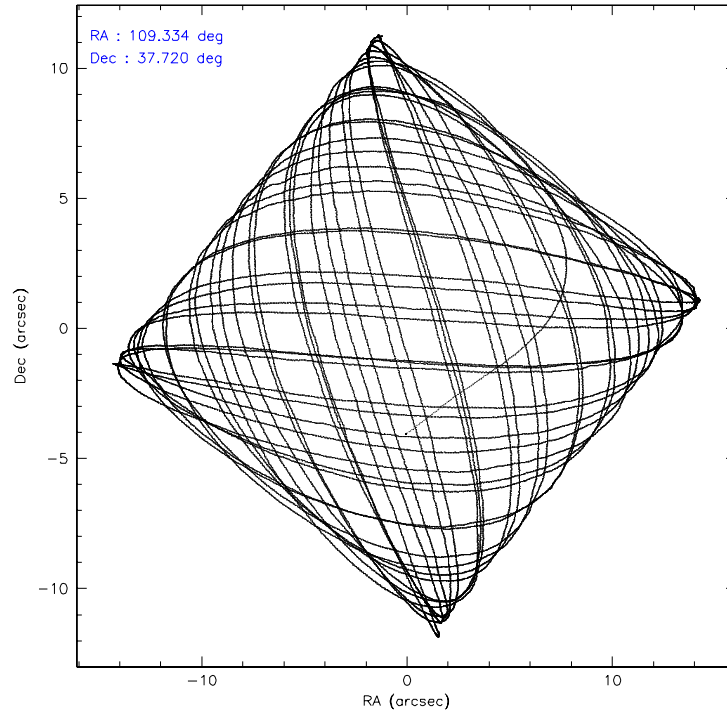
	ccd 0	ccd 1	ccd 2	ccd 3	ccd 6
level 1 events	158945	164639	205096	195858	196695
rejected events	134170	143996	177232	168115	171960
rejected %	84%	87%	86%	85%	87%

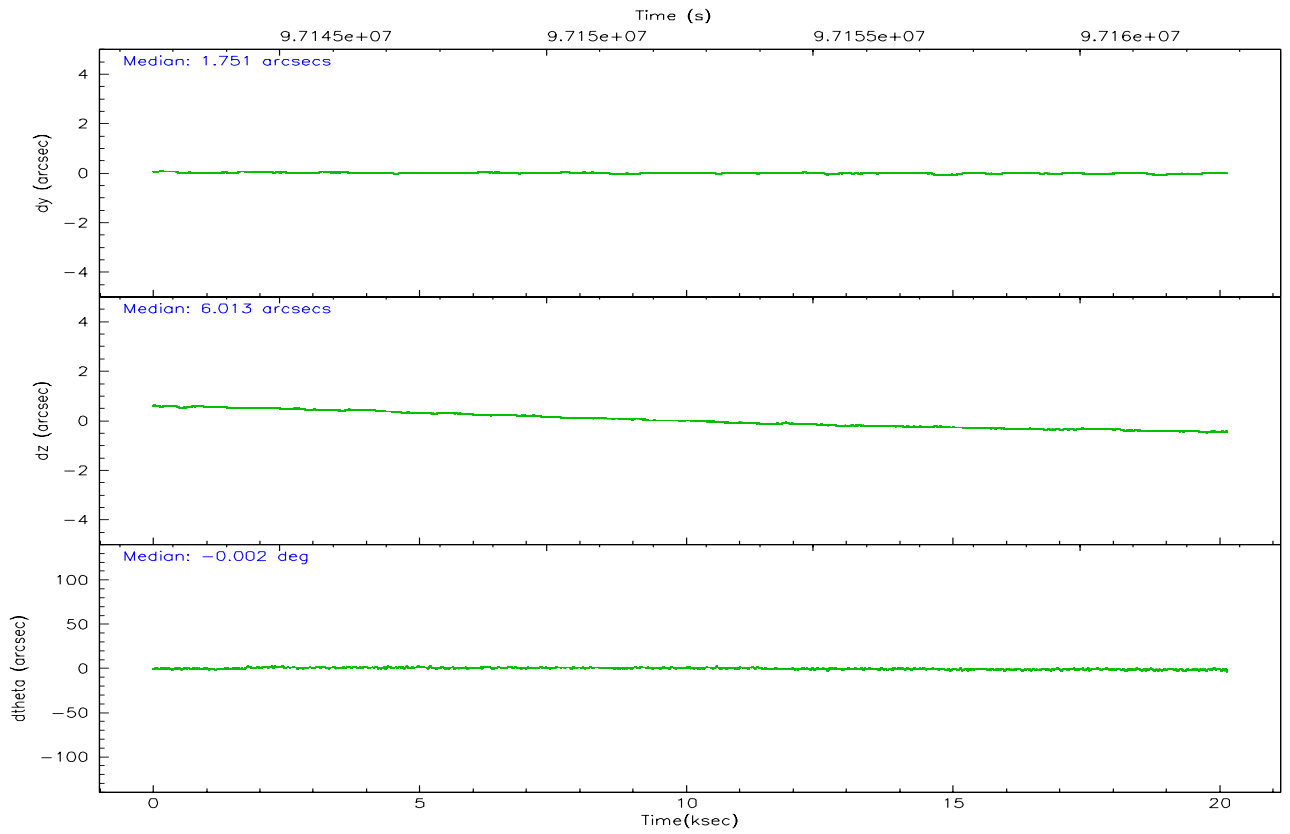
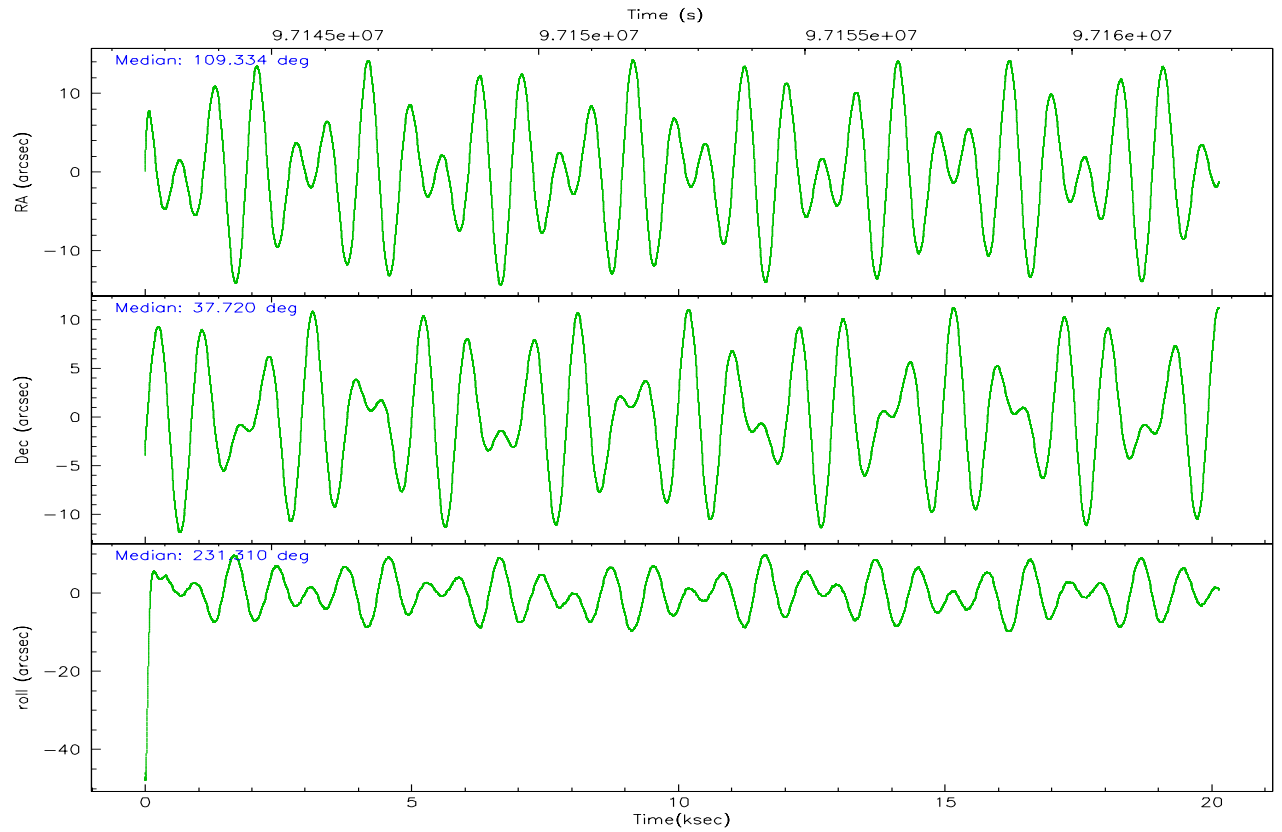
	ccd 0	ccd 1	ccd 2	ccd 3	ccd 6
grade 0 events	10886	8664	12793	15589	11401
	6%	5%	6%	7%	5%
grade 1 events	107	64	132	97	90
	0%	0%	0%	0%	0%
grade 2 events	7632	5149	8491	5320	7165
	4%	3%	4%	2%	3%
grade 3 events	1573	1769	1389	1782	1556
	0%	1%	0%	0%	0%
grade 4 events	1543	1632	2027	1731	1537
	0%	0%	0%	0%	0%
grade 5 events	4470	4857	4462	4831	5111
	2%	2%	2%	2%	2%
grade 6 events	3635	3844	3729	3746	3623
	2%	2%	1%	1%	1%
grade 7 events	129099	138660	172073	162762	166212
	81%	84%	83%	83%	84%

## 2.2 Compared Parameters

Parameter	Planned	Actual	Parameter	Planned	Actual
Instrument	ACIS	ACIS	Obspar format version number	6	6
Detector	ACIS-01236	ACIS-01236	Obspar file type	PREDICTED	ACTUAL
Grating	NONE	NONE	Obspar update status	NONE	UPDATED
Data mode	FAINT	FAINT	Number of optional ACIS chips dropped	0	0
Observation mode	POINTING	POINTING	On-chip summing requested	N	N
Pointing RA	109.339390	109.3340994974076	Subarray requested	NONE	NONE
Pointing Dec	37.746979	37.71982802489258	Alternating exposures requested	N	N
Pointing Roll	231.098353	231.3102401554214	Primary exposure time	0.000000	3.1
SIM focus pos (mm)	-0.782348	-0.7809083437167272			
SIM defocus (mm)	0	0.001439871863259334			
SIM translation stage pos (mm)	-225.840463	-225.8433433320239			
SIM translation stage offset (mm)	-7.752	-7.749109670905796			
Observation start time	97142762.184000	97141592.42025			
Observation start date	2001-01-29T08:04:58	2001-01-29T07:46:32			
Observation end time	97162762.184000	97163977.908611			
Observation end date	2001-01-29T13:38:18	2001-01-29T13:59:37			
Read mode	TIMED	TIMED			

## 2.3 Aspect





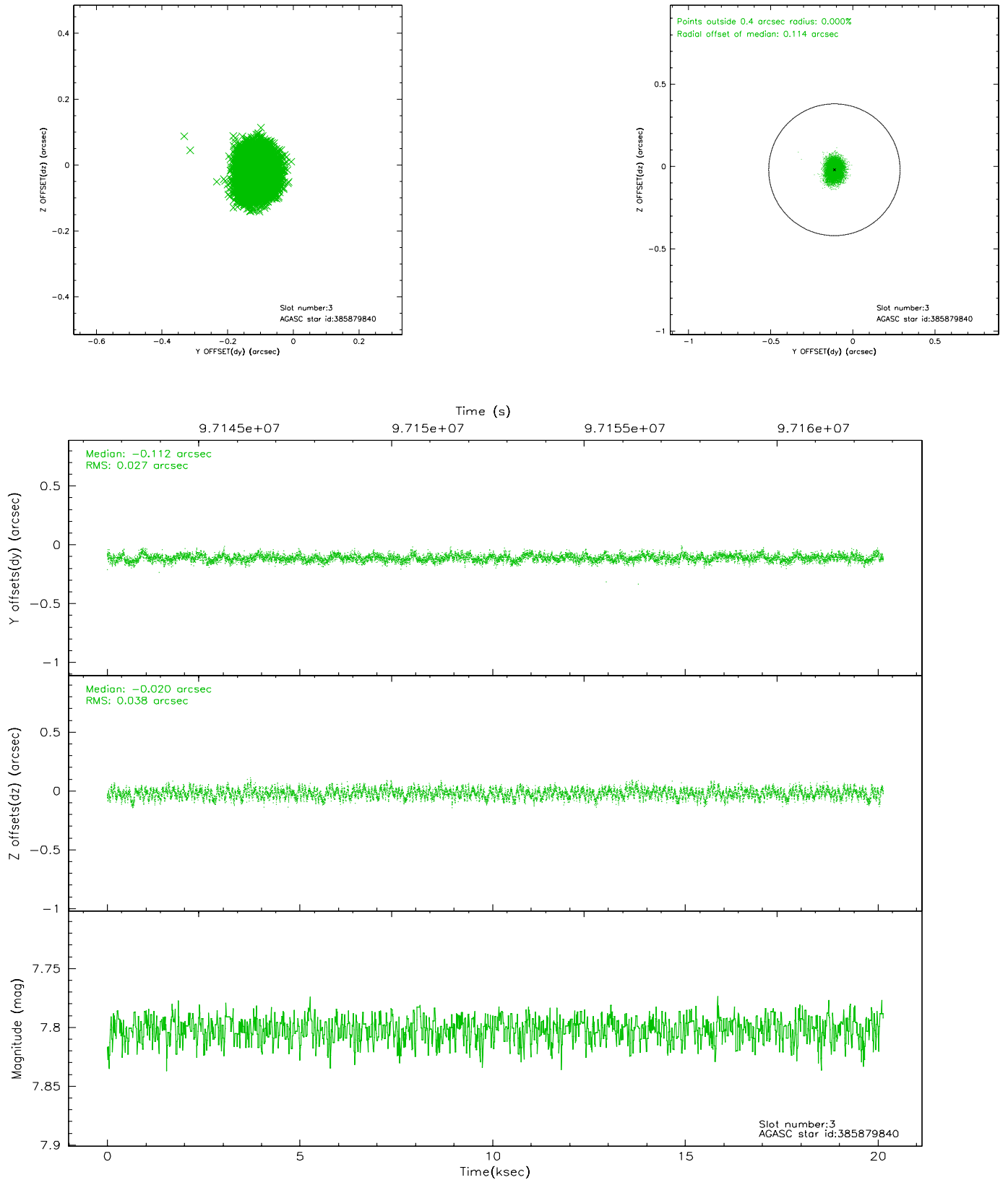
### Slot Statistics

slot	status	id	mag	n_pts	med_dy	med_dz	dr1	dr2	ra	dec	mean_y	mean_z
0	FID	ACIS-I-2	7.17	4912	-0.029	-0.011	0.011	0.019	0.000000	0.000000	-756.67	-993.83
1	FID	ACIS-I-4	7.15	4911	-0.099	0.029	0.006	0.010	0.000000	0.000000	2157.19	912.21
2	FID	ACIS-I-5	7.22	4912	0.026	0.051	0.010	0.017	0.000000	0.000000	-1809.80	909.30
3	GUIDE	385879840	7.80	9824	-0.112	-0.020	0.050	0.081	109.502710	38.364188	-2019.93	-1037.36
4	GUIDE	322831288	8.30	9825	0.032	-0.089	0.055	0.090	109.203187	37.248139	1641.48	823.17
5	GUIDE	385877528	8.44	9823	-0.027	-0.061	0.059	0.096	109.415669	38.390918	-1939.98	-1288.84
6	GUIDE	322833032	9.45	9821	0.001	0.116	0.097	0.156	108.740721	37.290603	2350.11	-306.54
7	GUIDE	322831016	9.66	9814	0.112	0.055	0.117	0.188	109.551352	37.195307	1162.88	1719.37

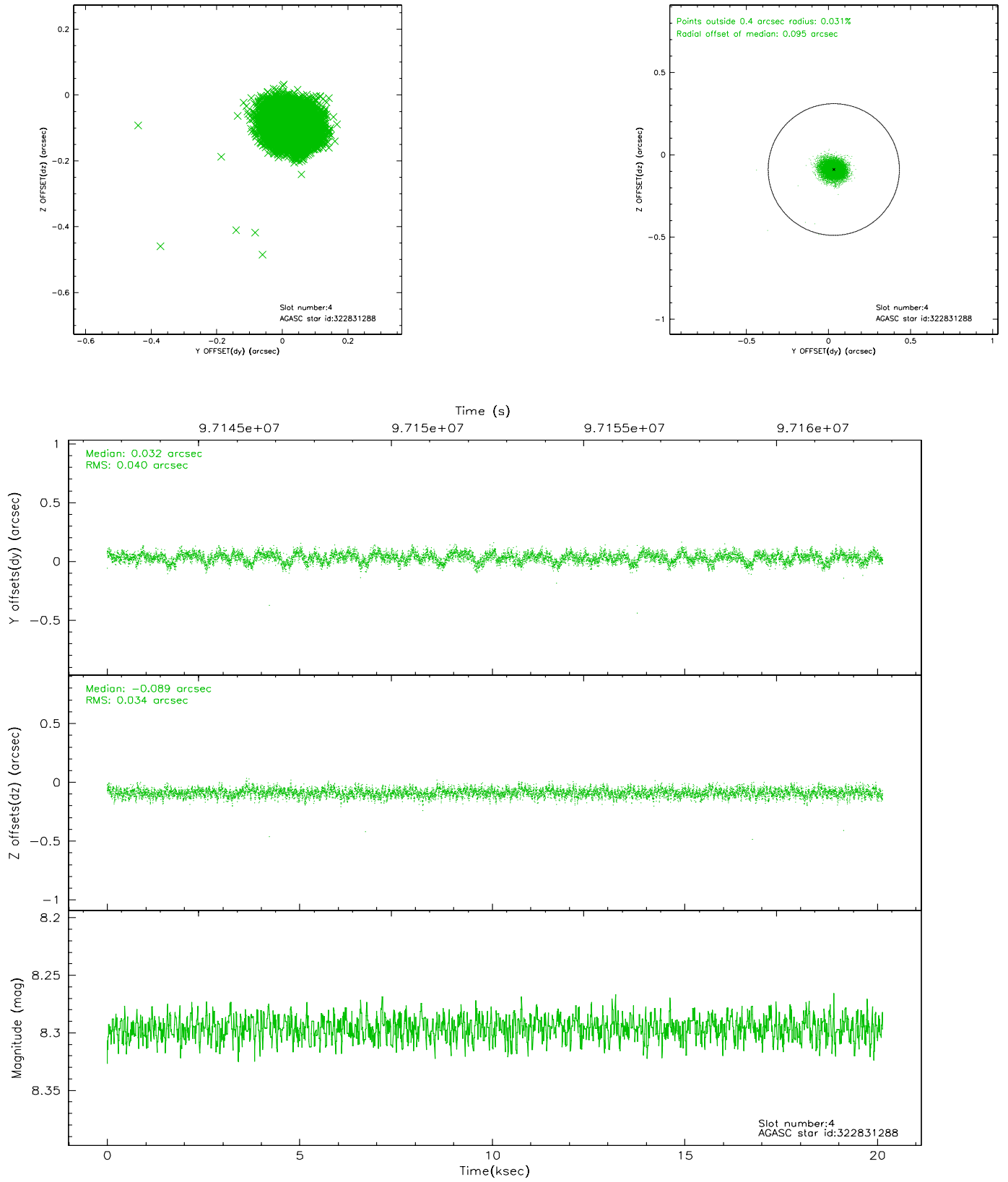


## 2.4 Star Slots

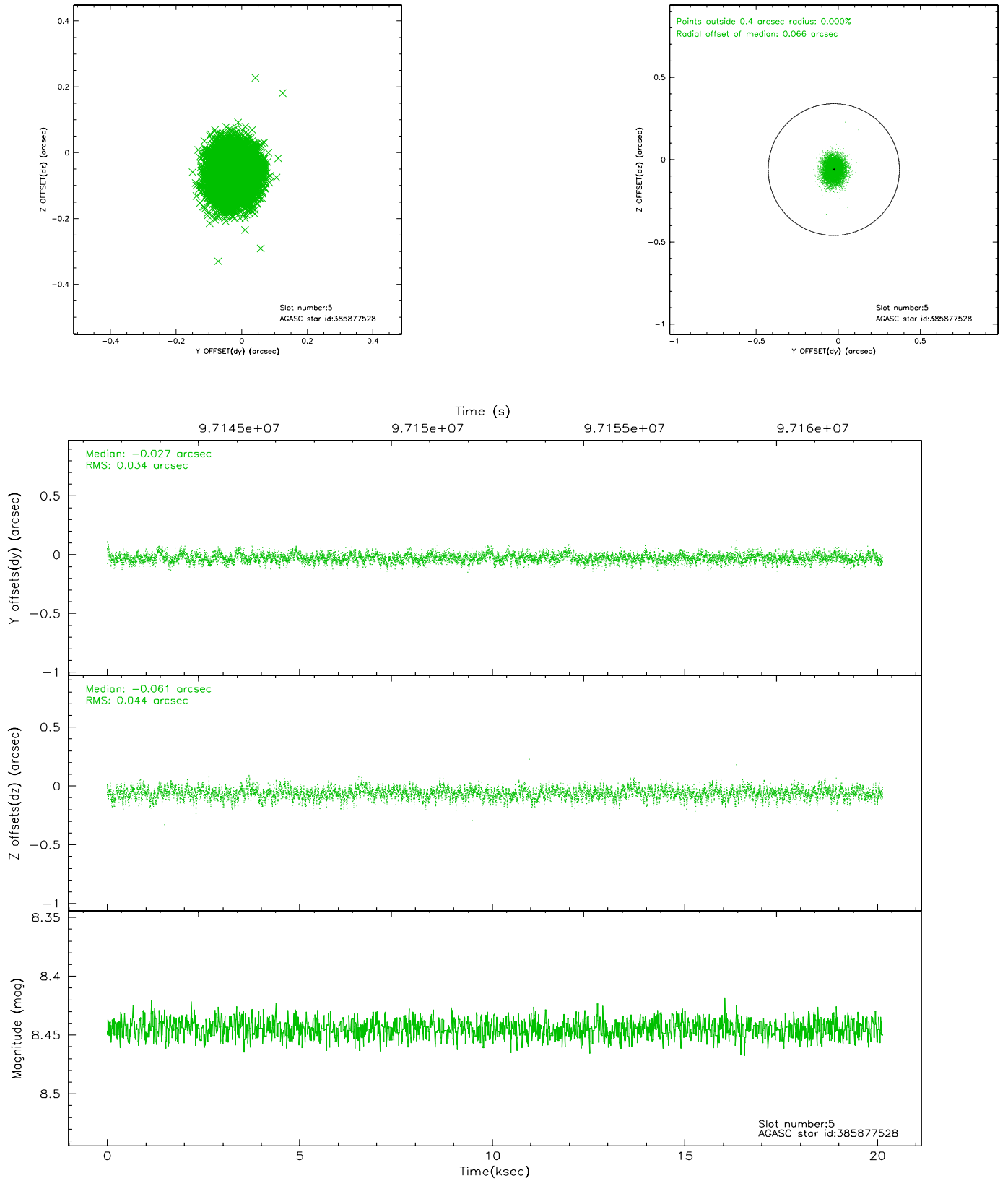
### 2.4.1 Slot 3



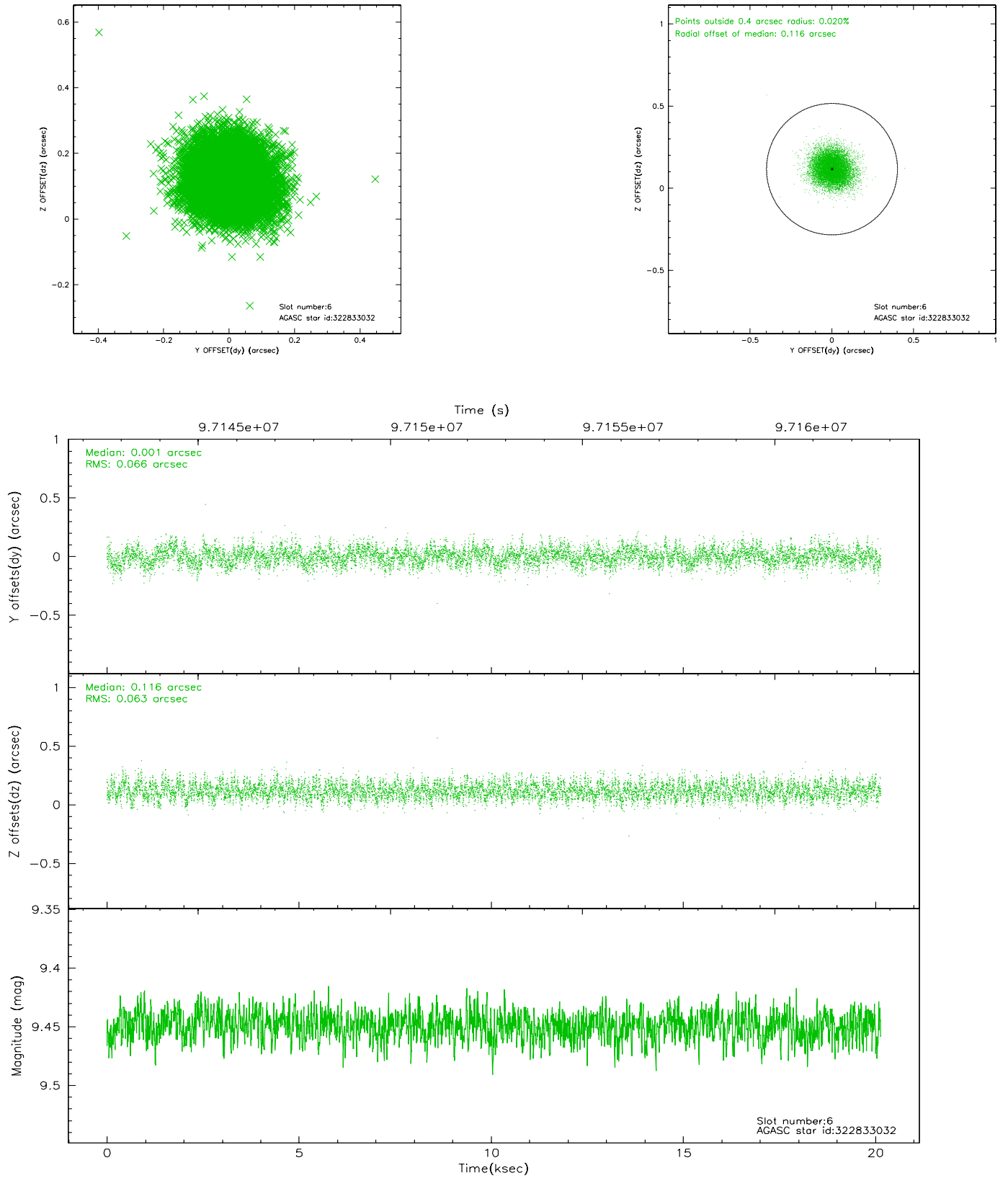
## 2.4.2 Slot 4



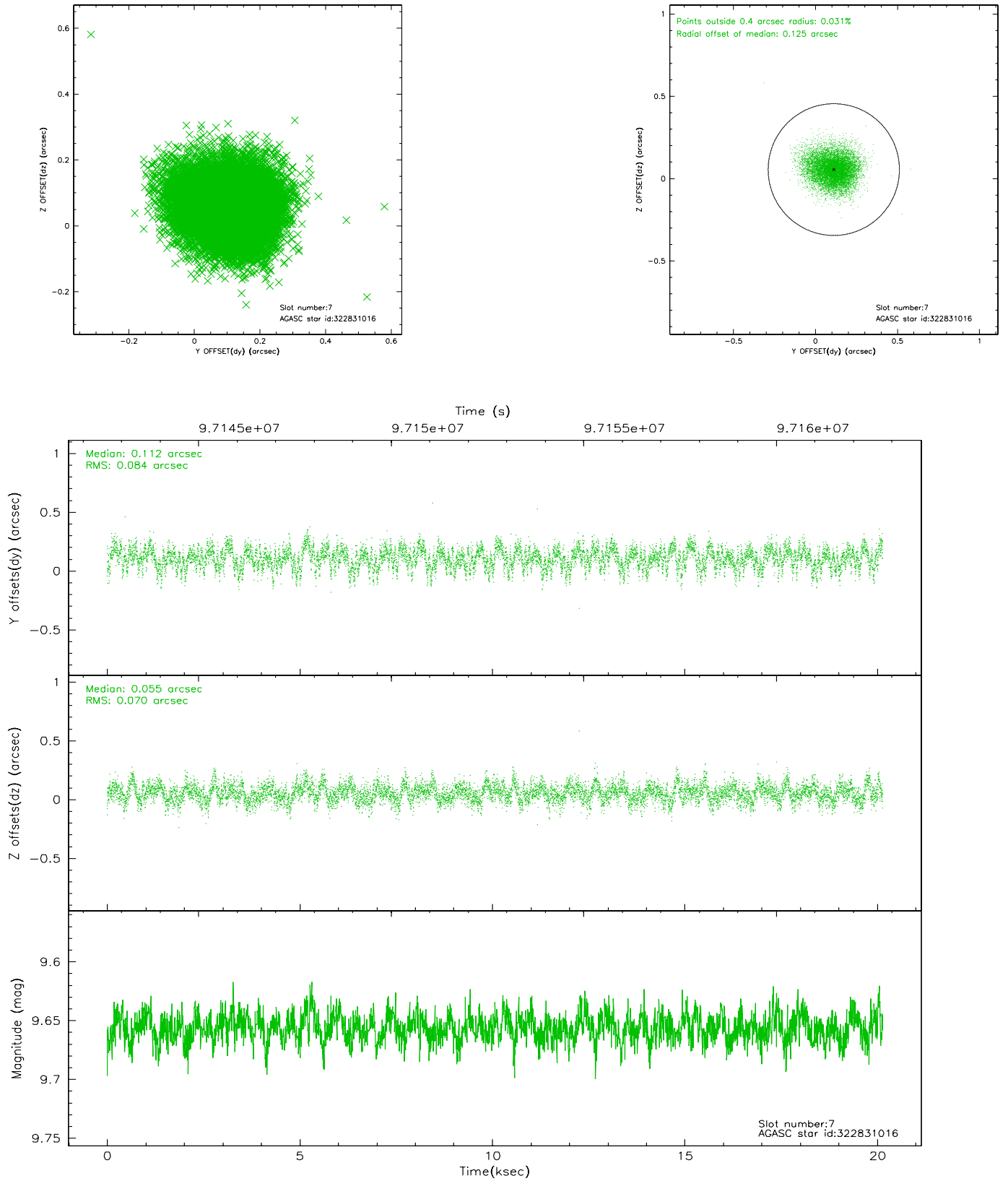
### 2.4.3 Slot 5



## 2.4.4 Slot 6

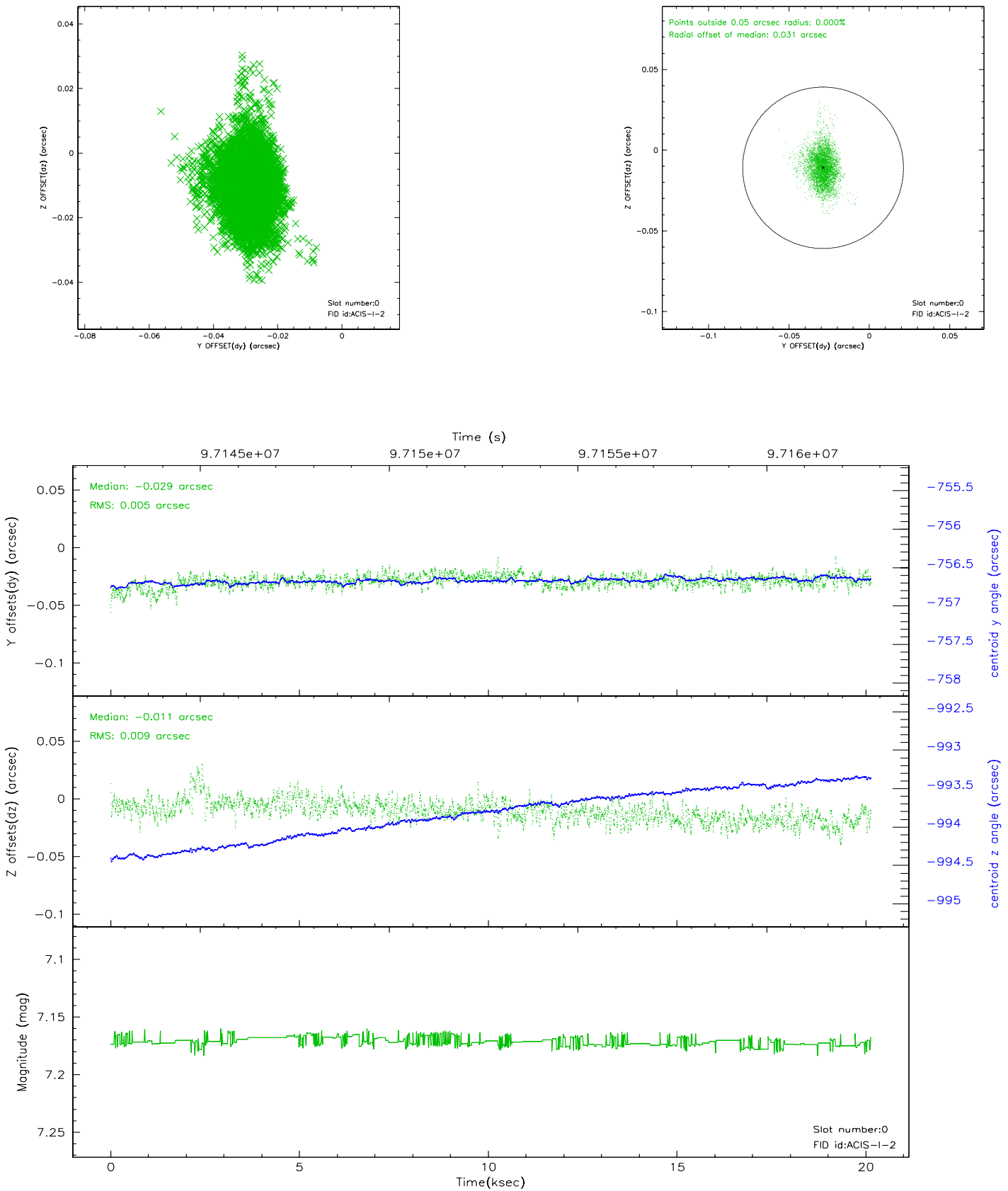


## 2.4.5 Slot 7

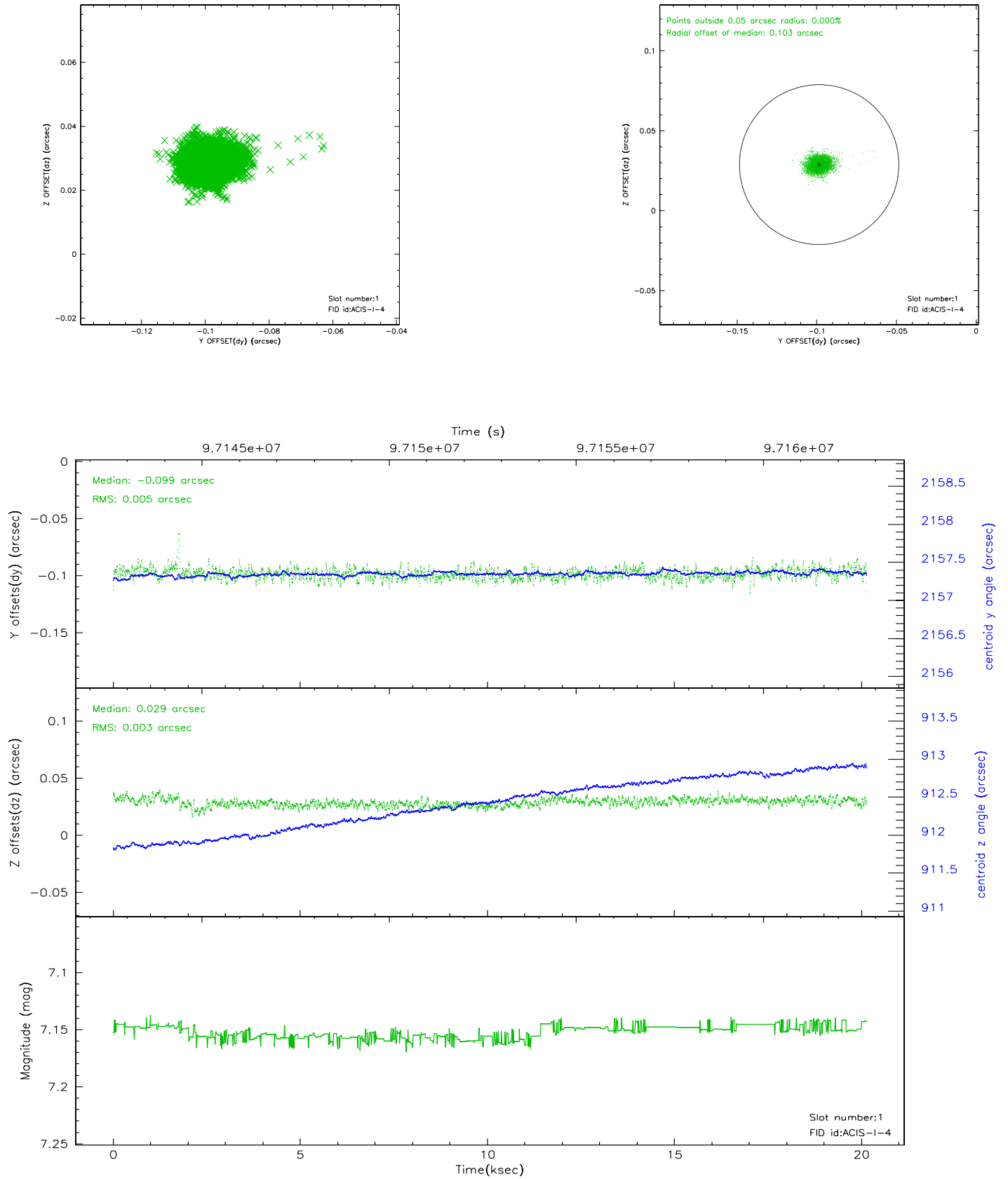


## 2.5 FID Slots

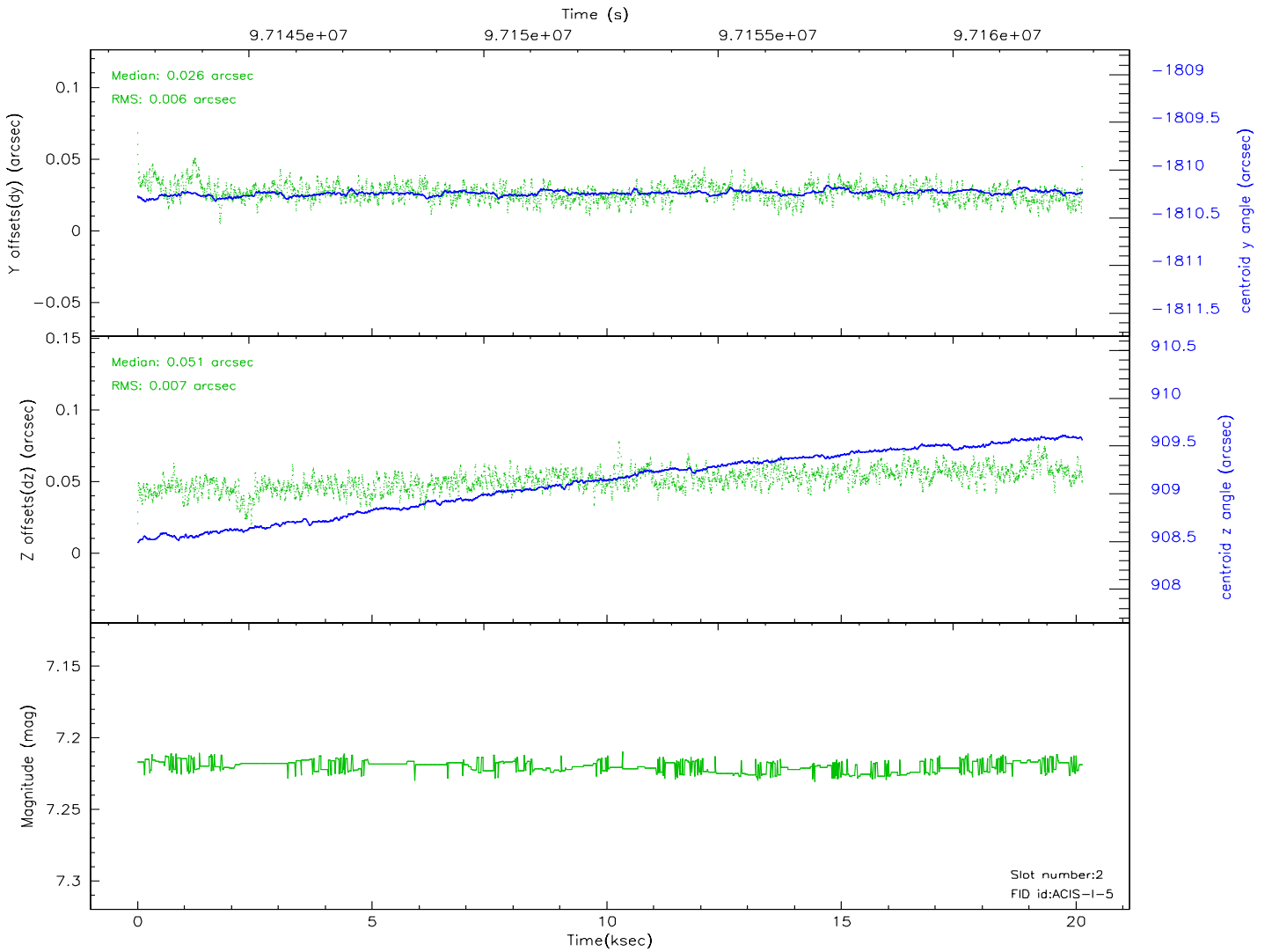
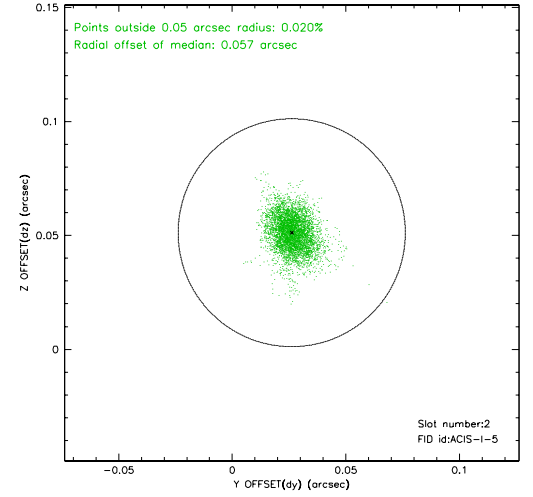
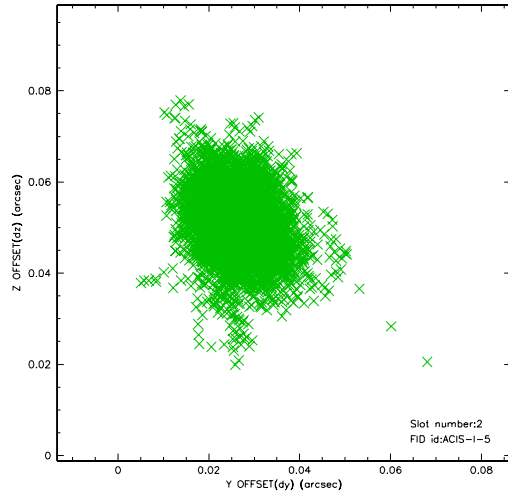
### 2.5.1 Slot 0



## 2.5.2 Slot 1

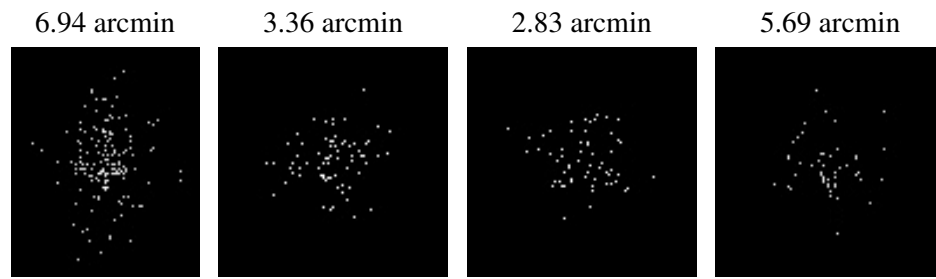


### 2.5.3 Slot 2





### 3 Point Sources



## A Summary

### A.1 Status

V&V Scientist	Jen Lauer
V&V Date (YYYY-MM-DD)	2006.11.06
V&V Edition	1
V&V Disposition and Status	OK
V&V Charge Time	20.134

### A.2 Comments