

V&V Reference Report

L2 ASCDS Version : 8.4.5

Observation 1649 - L2 Version 3
Chandra X-Ray Center

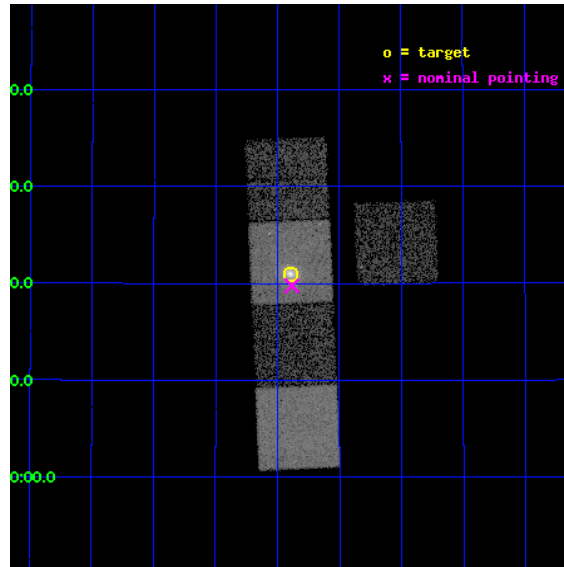
L2 Processing Date : Sep 23 2012

Contents

1	Front	2
2	OBI	3
2.1	OBI	3
2.1.1	Images	3
2.1.2	Bias	3
2.1.3	Parameters	4
2.1.4	Events	4
2.2	Compared Parameters	5
2.3	Aspect	6
2.4	Star Slots	9
2.4.1	Slot 3	9
2.4.2	Slot 4	10
2.4.3	Slot 5	11
2.4.4	Slot 6	12
2.4.5	Slot 7	13
2.5	FID Slots	14
2.5.1	Slot 0	14
2.5.2	Slot 1	15
2.5.3	Slot 2	16
A	Summary	17
A.1	Status	17
A.2	Comments	17

1 Front

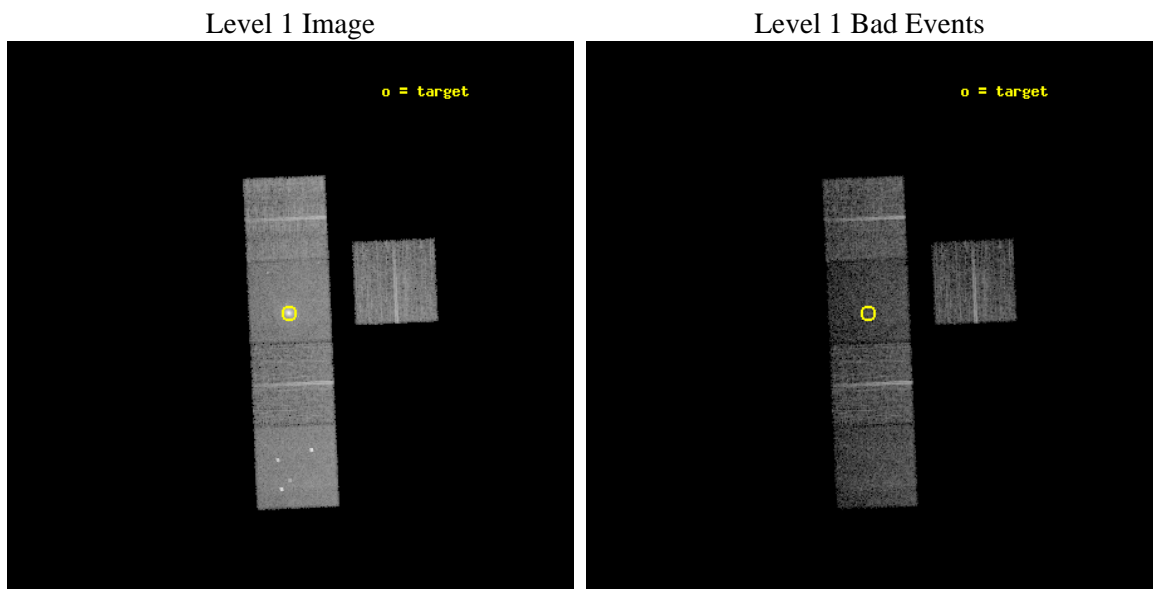
seq_num	800117	Sequence number
obs_id	1649	Observation id
title	THE COOLING FLOW IN RXJ1532.9+3021	Proposal title
observer	Professor Andrew Fabian	Principal investigator
object	RXJ1532	Source name
dtcycle	0	
cycle	P	events from which exps? Prim/Second/Both
ra_targ	233.224167	Observer's specified target RA [deg]
dec_targ	30.35	Observer's specified target Dec [deg]
ra_nom	233.22105370893	Nominal RA [deg]
dec_nom	30.329317111396	Nominal Dec [deg]
roll_nom	267.49608940151	Nominal Roll [deg]
revision	3	Processing version of data
ontime	9487.9639579952	Sum of GTIs [s]
livetime	9363.9967239465	Livetime [s]
ontime3	9487.8408380002	Sum of GTIs [s]
ontime5	9487.9229179919	Sum of GTIs [s]
ontime6	9487.8818779886	Sum of GTIs [s]
ontime7	9487.9639579952	Sum of GTIs [s]
ontime8	9487.7997979969	Sum of GTIs [s]
l2events	80518	Number of level 2 events



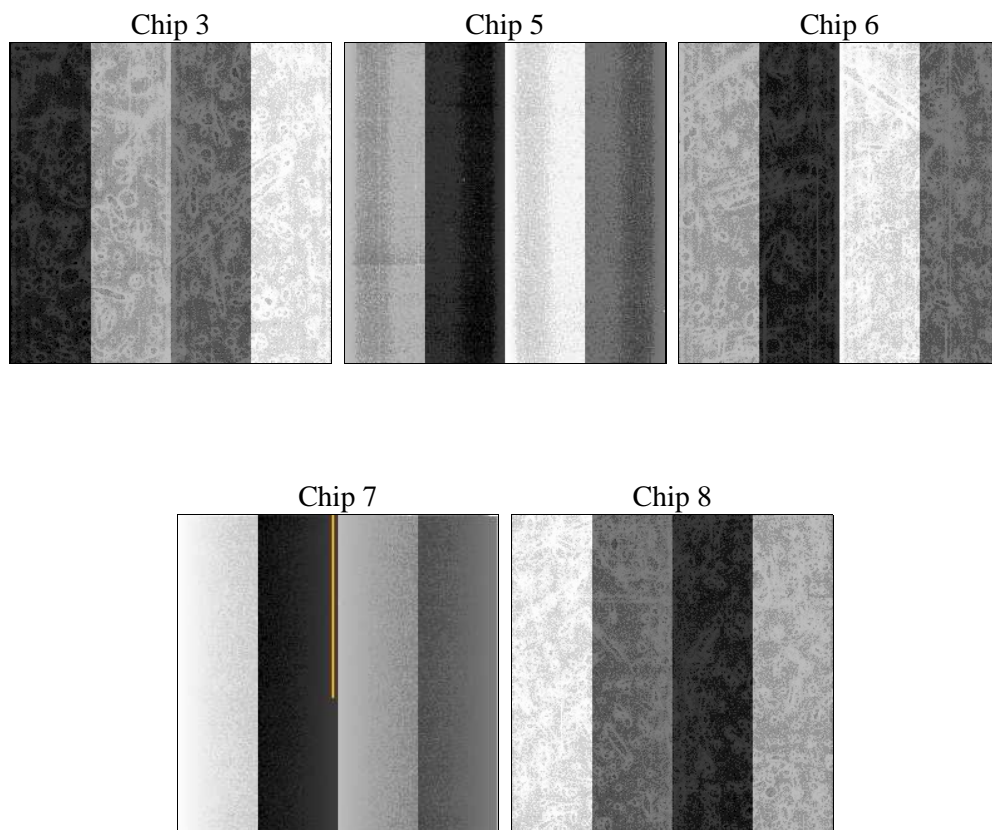
2 OBI

2.1 OBI

2.1.1 Images



2.1.2 Bias



2.1.3 Parameters

obi_num	0	Obi number	sched_exp_time	9470.000000	[s] Scheduled observation exposure time
ascdsver	8.4.5	Processing system revision	ontime	9487.9639579952	Sum of GTIs [s]
caldsver	4.5.1.1	 	ontime3	9487.8408380002	Sum of GTIs [s]
date	2012-09-23T07:28:44	Date and time of file creation	ontime5	9487.9229179919	Sum of GTIs [s]
revision	3	Processing version of data	ontime6	9487.8818779886	Sum of GTIs [s]
			ontime7	9487.9639579952	Sum of GTIs [s]
			ontime8	9487.7997979969	Sum of GTIs [s]
			l1events	304061	Number of level 1 events

2.1.4 Events

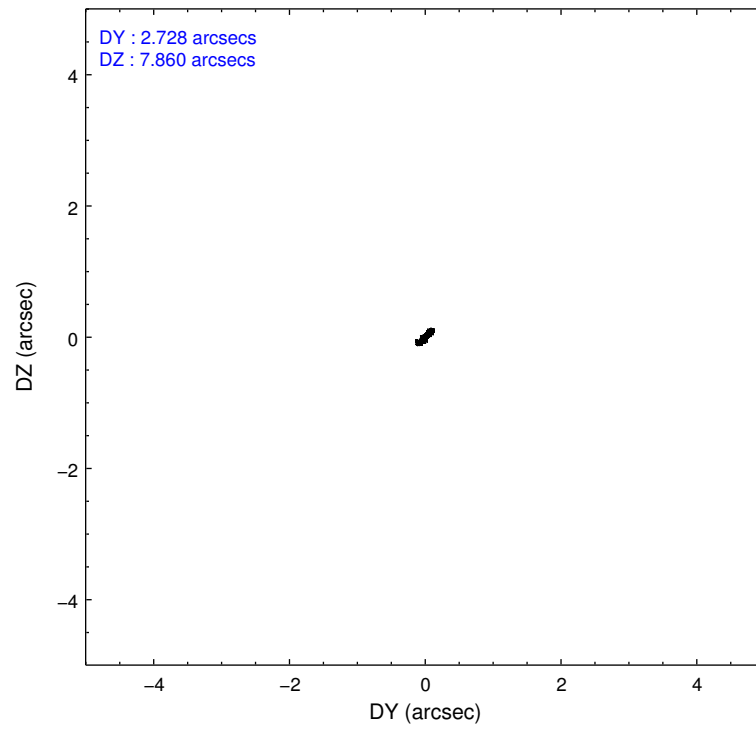
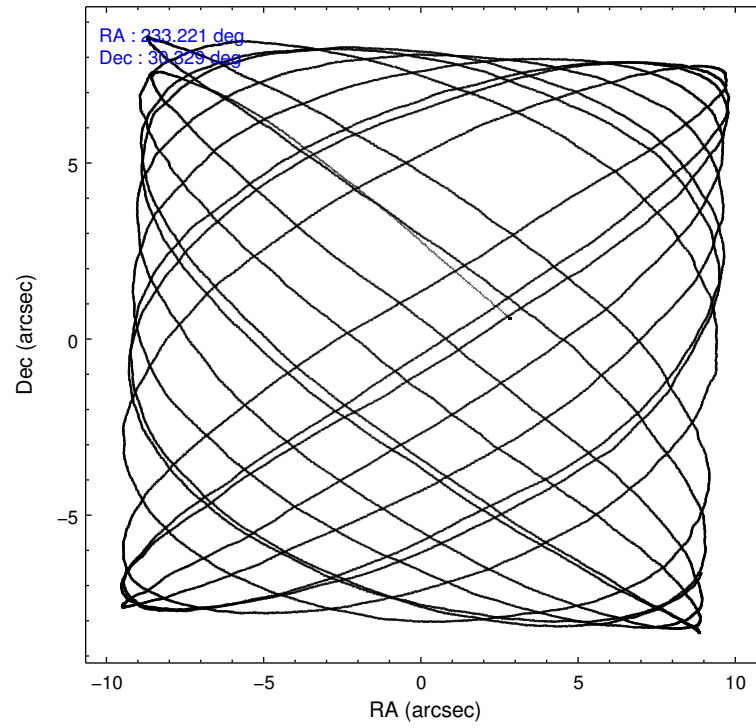
	ccd 3	ccd 5	ccd 6	ccd 7	ccd 8
level 1 events	50869	69565	51980	65444	66203
rejected events	46297	32177	46617	28565	49936
rejected %	91%	46%	89%	43%	75%

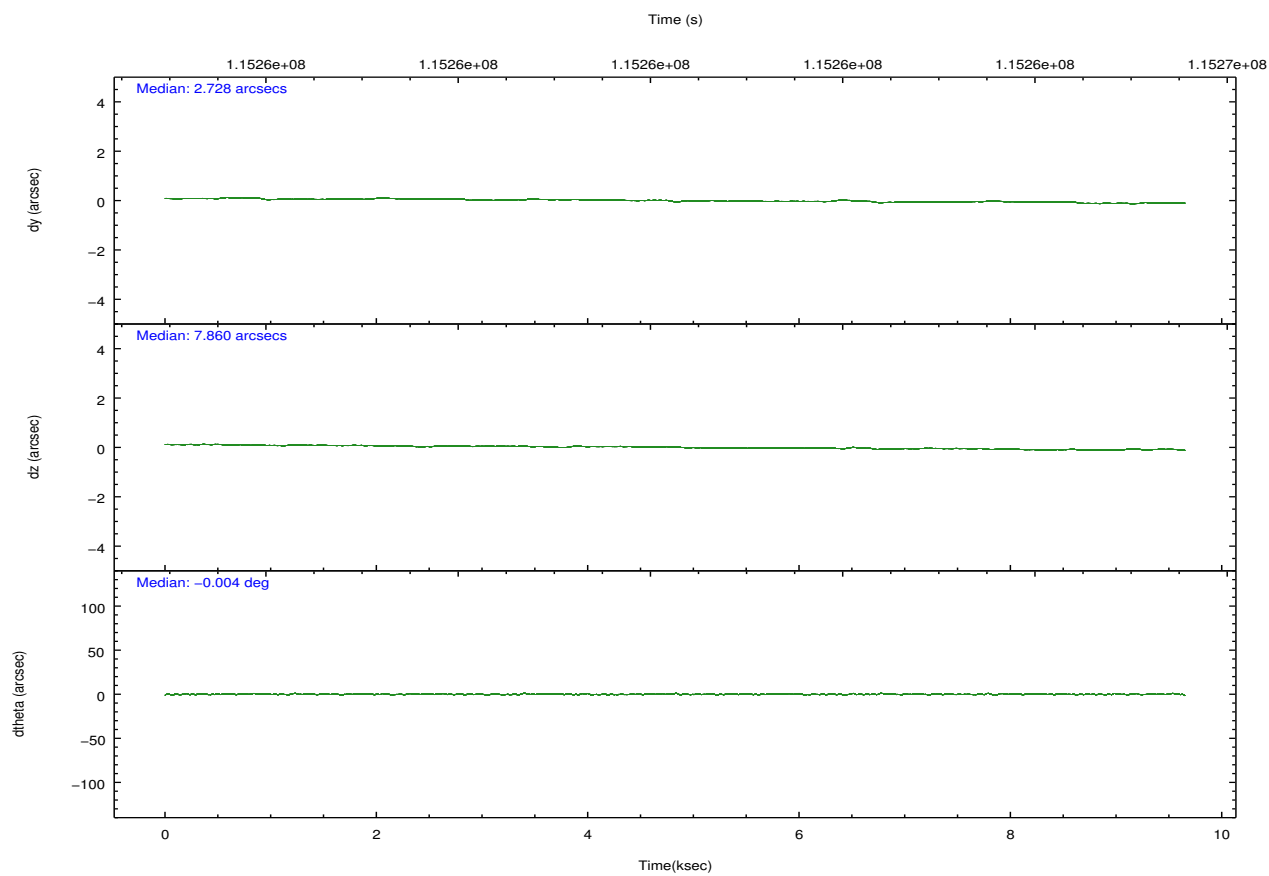
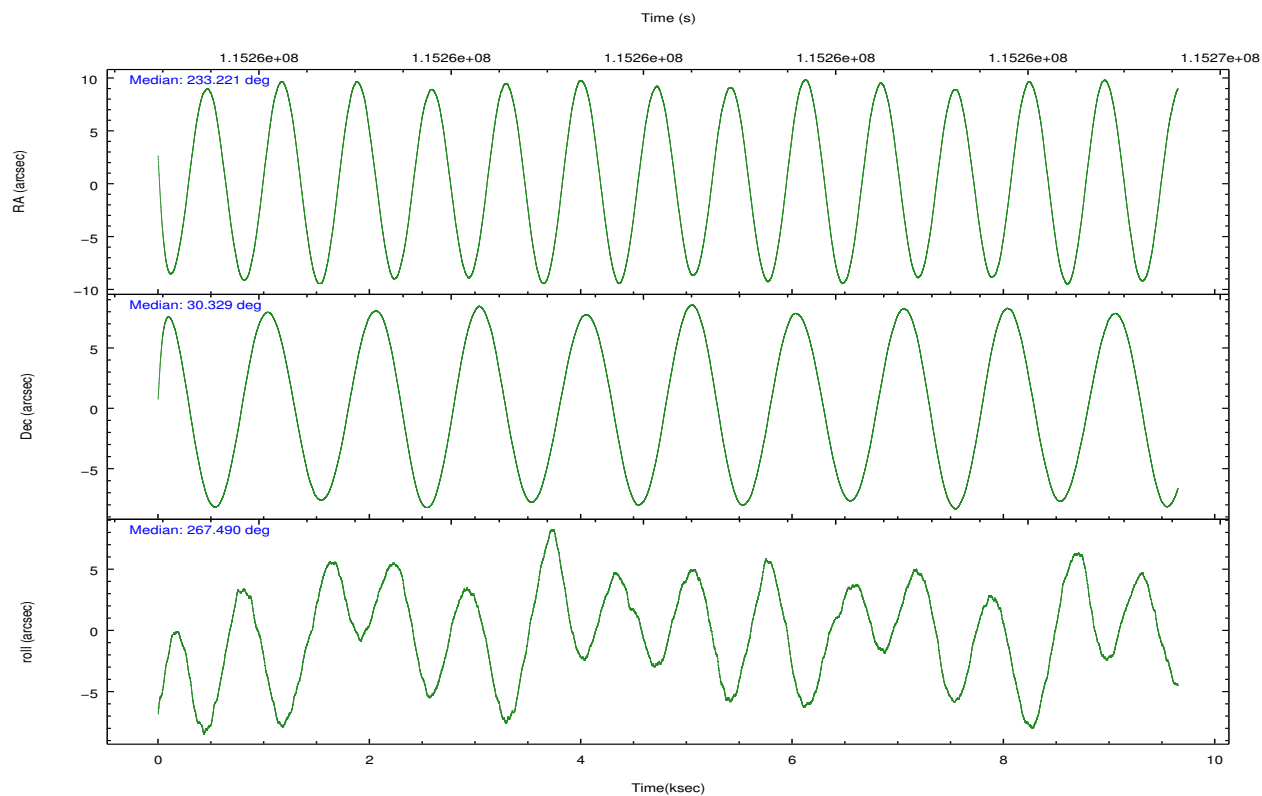
	ccd 3	ccd 5	ccd 6	ccd 7	ccd 8
grade 0 events	1622	7402	1920	6503	5132
	3%	10%	3%	9%	7%
grade 1 events	24	100	29	47	43
	0%	0%	0%	0%	0%
grade 2 events	964	9169	1134	8204	3132
	1%	13%	2%	12%	4%
grade 3 events	532	1948	634	3883	2083
	1%	2%	1%	5%	3%
grade 4 events	520	2425	640	3803	1924
	1%	3%	1%	5%	2%
grade 5 events	1698	5352	1948	5687	2551
	3%	7%	3%	8%	3%
grade 6 events	936	16457	1041	14495	3998
	1%	23%	2%	22%	6%
grade 7 events	44573	26712	44634	22822	47340
	87%	38%	85%	34%	71%

2.2 Compared Parameters

Parameter	Planned	Actual	Parameter	Planned	Actual
Instrument	ACIS	ACIS	Obspar format version number	7	7
Detector	ACIS-35678	ACIS-35678	Obspar file type	PREDICTED	ACTUAL
Grating	NONE	NONE	Obspar update status	NONE	UPDATED
Data mode	VFAINT	VFAINT	Number of optional ACIS chips dropped	0	0
Observation mode	POINTING	POINTING	On-chip summing requested	N	N
[deg] Pointing RA	233.206177	233.221053708926	Subarray requested	NONE	NONE
[deg] Pointing Dec	30.353393	30.32931711139618	Alternating exposures requested	N	N
[deg] Pointing Roll	267.346977	267.4960894015051	[s] Primary exposure time	0.000000	3.1
[mm] SIM focus pos	-0.684267	-0.6828225247311905			
[mm] SIM defocus	0	0.001444936568705701			
[mm] SIM translation stage pos	-190.132523	-190.1400660498719			
[mm] SIM translation stage offset	0	0.00754346686406393			
[s] Observation start time (MET)	115255614.184000	115254557.74996			
Observation start date	2001-08-26T23:25:50	2001-08-26T23:09:17			
[s] Observation end time (MET)	115265084.184000	115265628.2629			
Observation end date	2001-08-27T02:03:40	2001-08-27T02:13:48			
Read mode	TIMED	TIMED			

2.3 Aspect



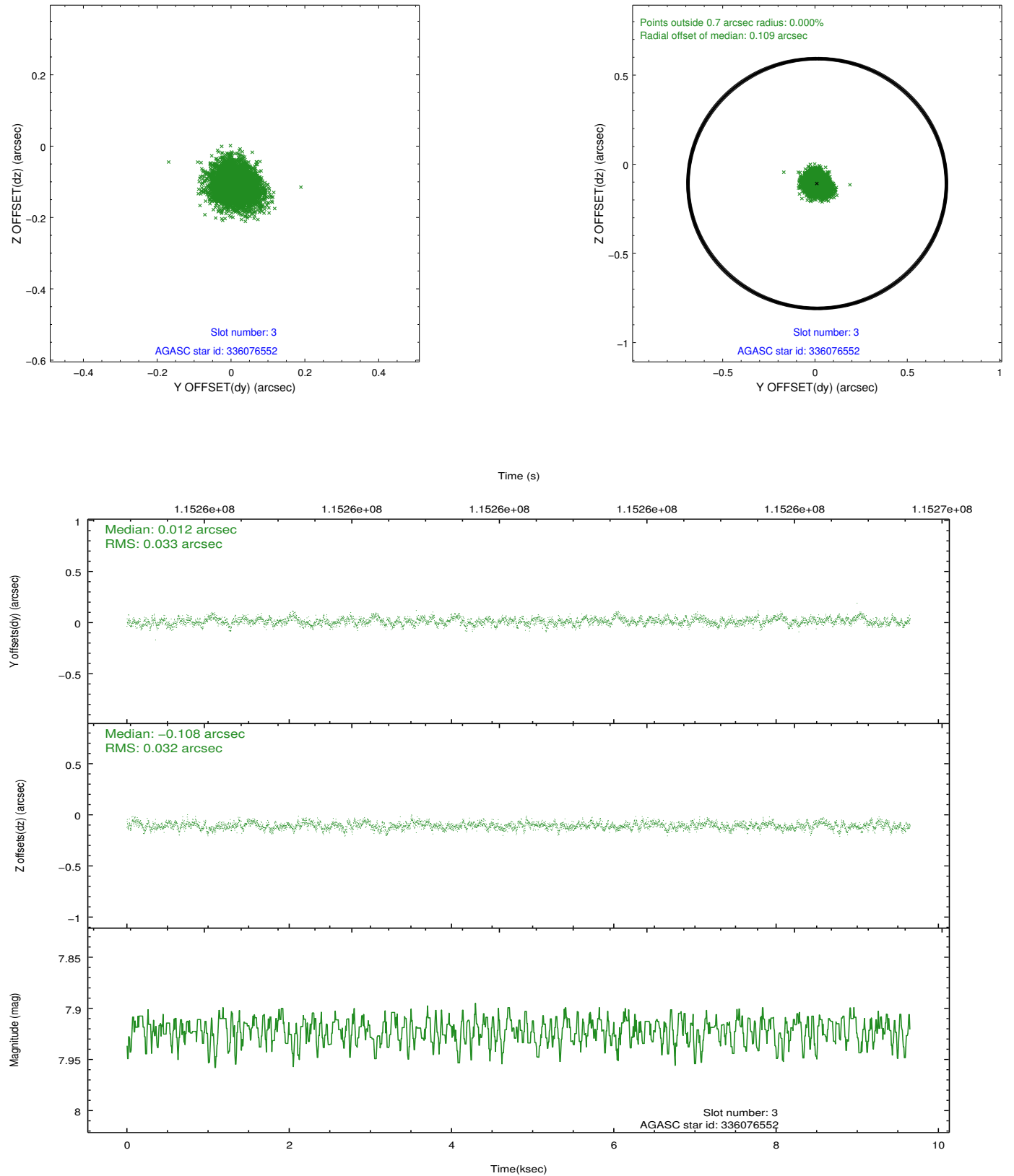


Slot Statistics

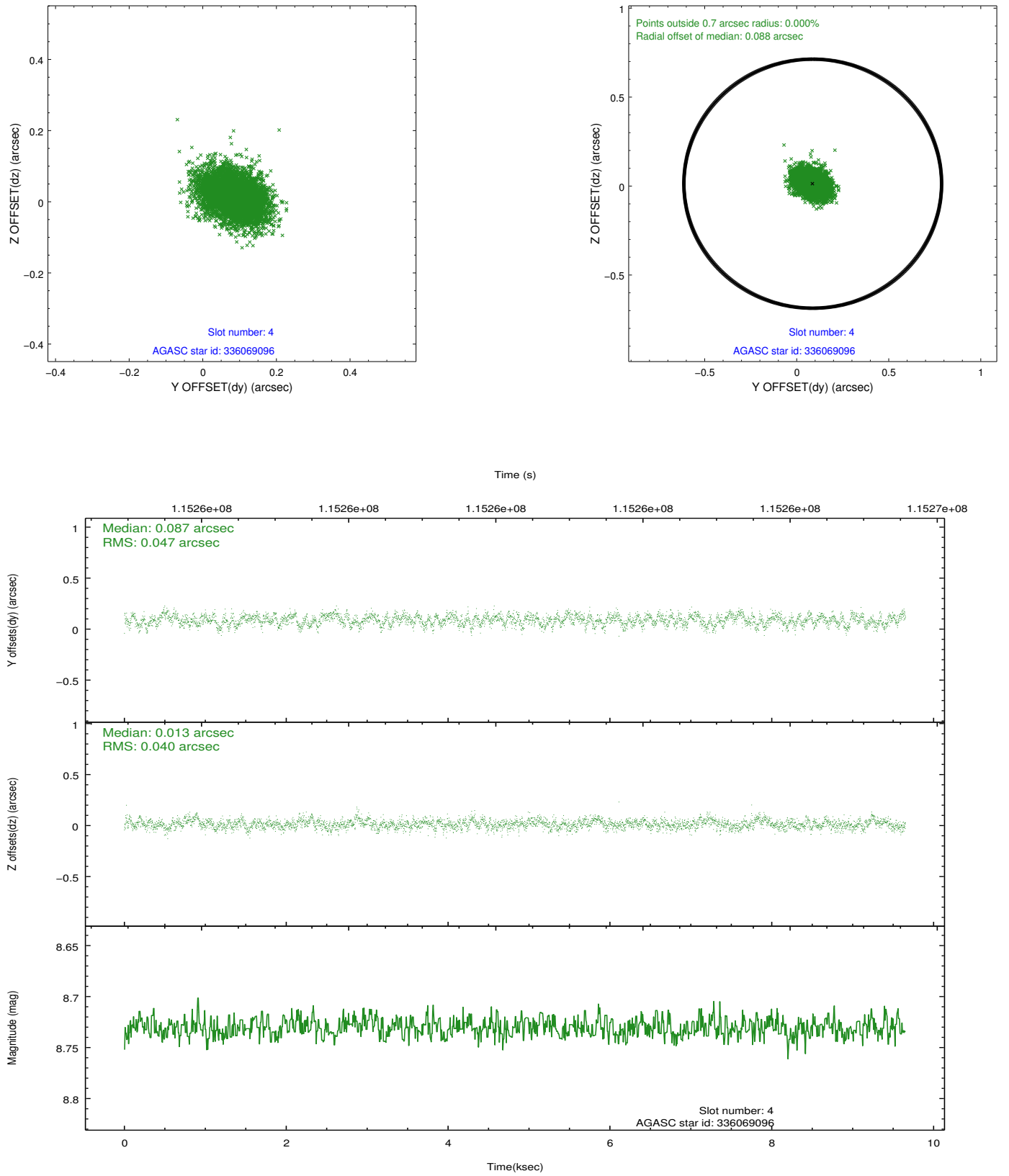
slot	status	id	mag	n_pts	med_dy	med_dz	dr1	dr2	ra	dec	mean_y	mean_z
0	FID	ACIS-S-2	7.11	2353	-0.006	-0.012	0.007	0.010	0.000000	0.000000	-755.38	-1729.06
1	FID	ACIS-S-4	7.19	2353	-0.044	0.006	0.006	0.011	0.000000	0.000000	2157.62	178.86
2	FID	ACIS-S-5	7.24	2353	0.019	0.014	0.007	0.012	0.000000	0.000000	-1807.47	173.19
3	GUIDE	336076552	7.92	4708	0.012	-0.108	0.049	0.079	233.235475	30.281222	255.70	103.70
4	GUIDE	336069096	8.73	4709	0.087	0.013	0.066	0.108	232.784424	30.008451	1299.58	-1255.04
5	GUIDE	336068920	9.08	4705	0.026	0.118	0.087	0.136	233.818662	30.014906	1124.26	1964.18
6	GUIDE	336070048	9.10	4709	-0.097	0.011	0.075	0.121	232.735573	30.873902	-1806.90	-1538.41
7	GUIDE	336074336	9.27	4706	-0.028	-0.037	0.083	0.135	232.713714	30.669381	-1068.95	-1575.77

2.4 Star Slots

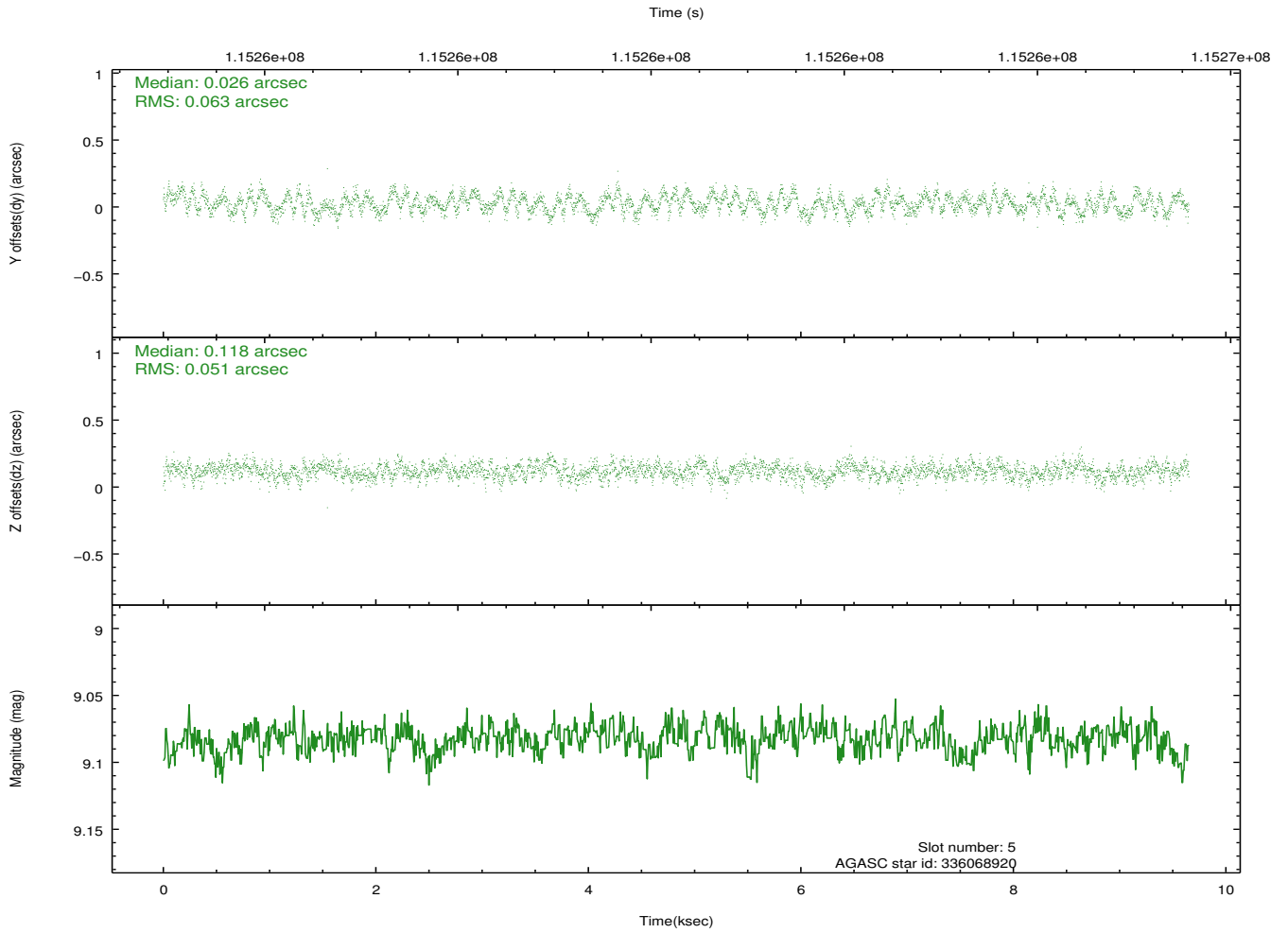
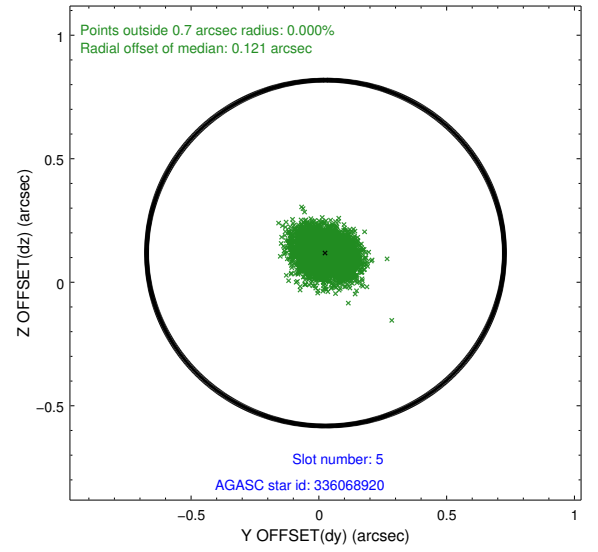
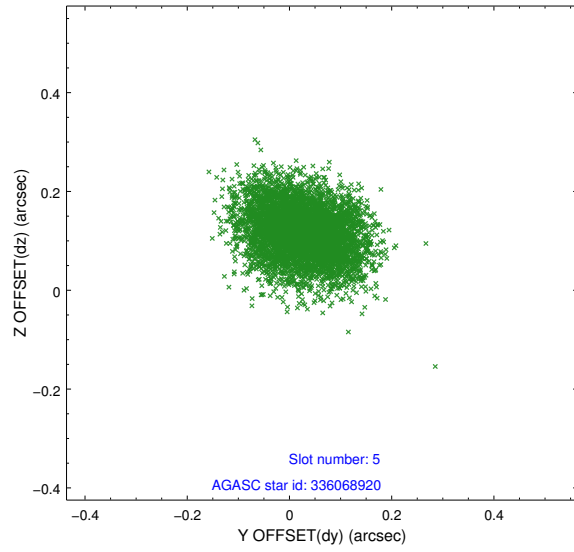
2.4.1 Slot 3



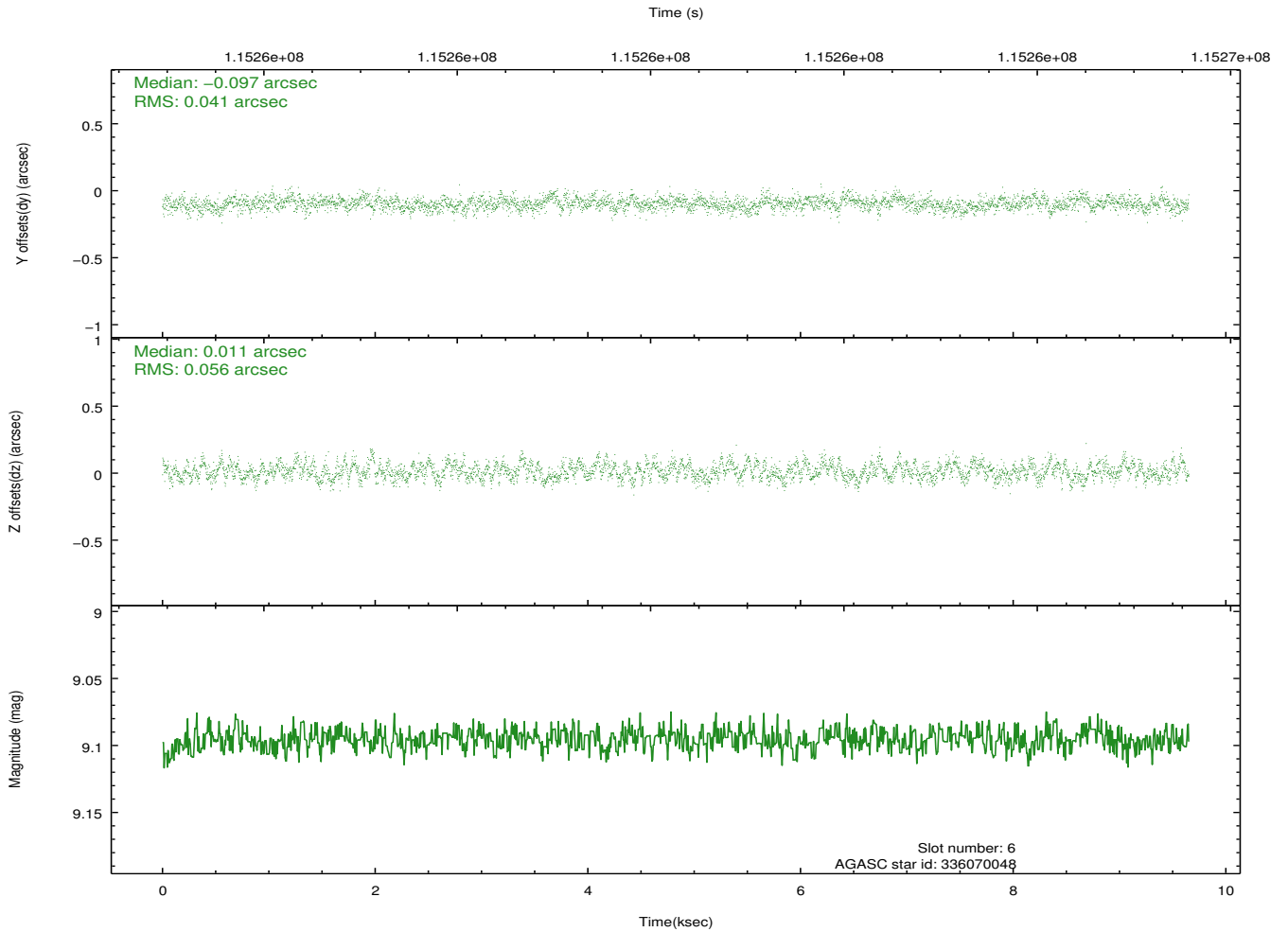
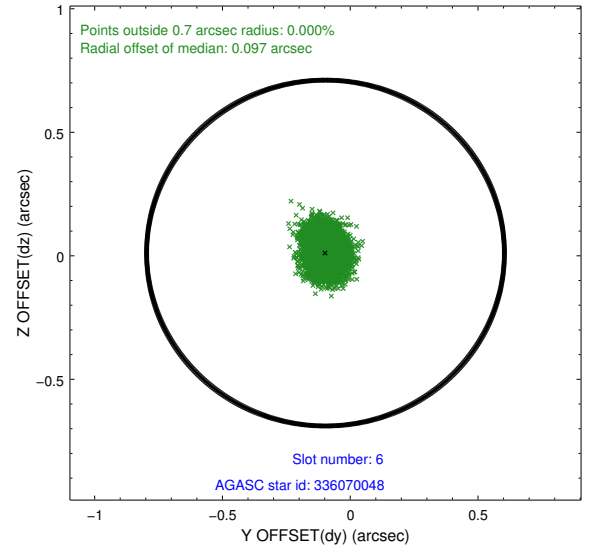
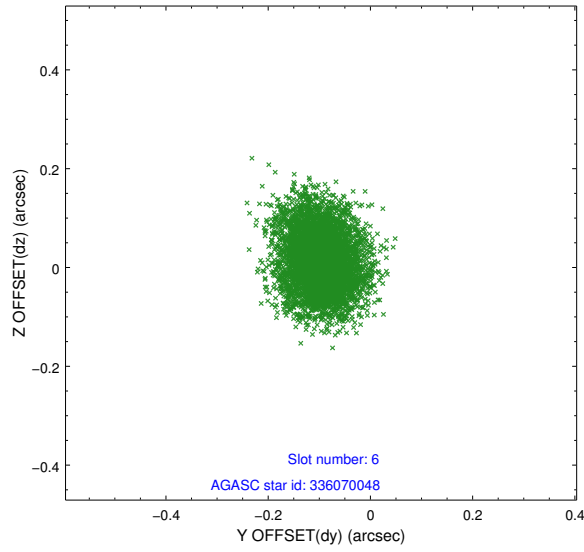
2.4.2 Slot 4



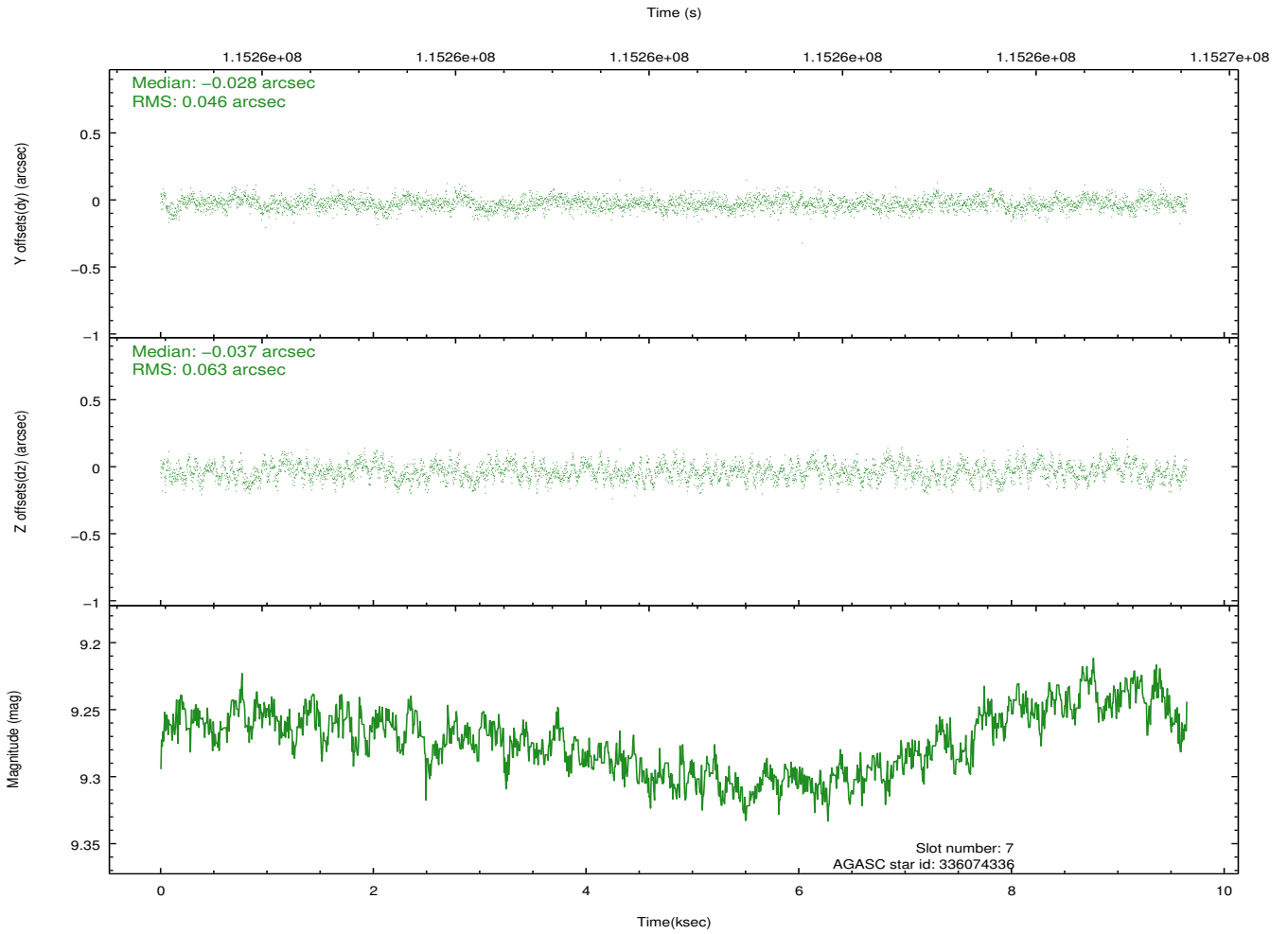
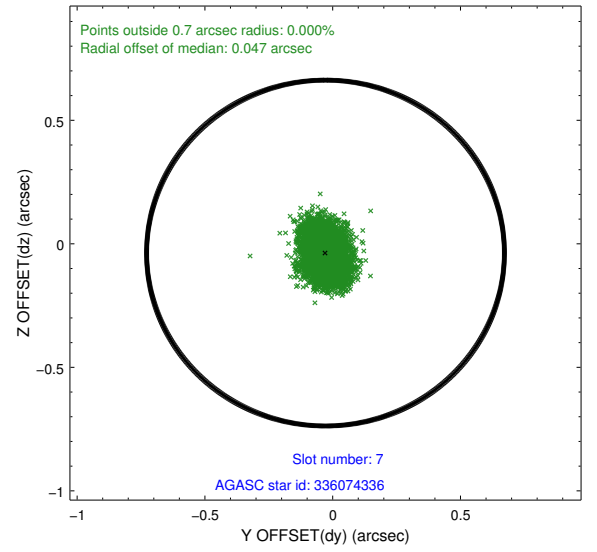
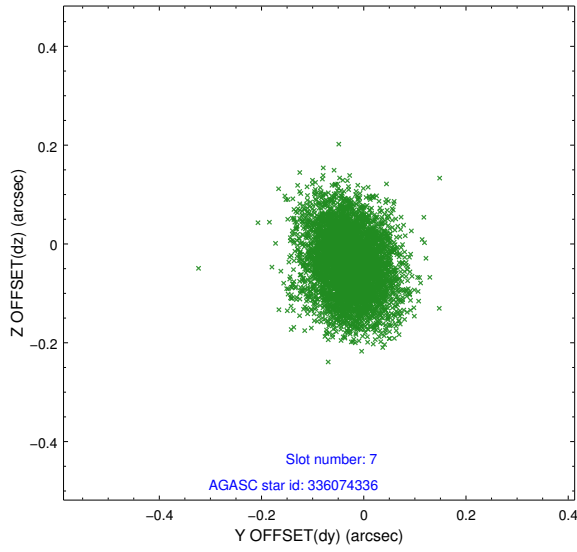
2.4.3 Slot 5



2.4.4 Slot 6

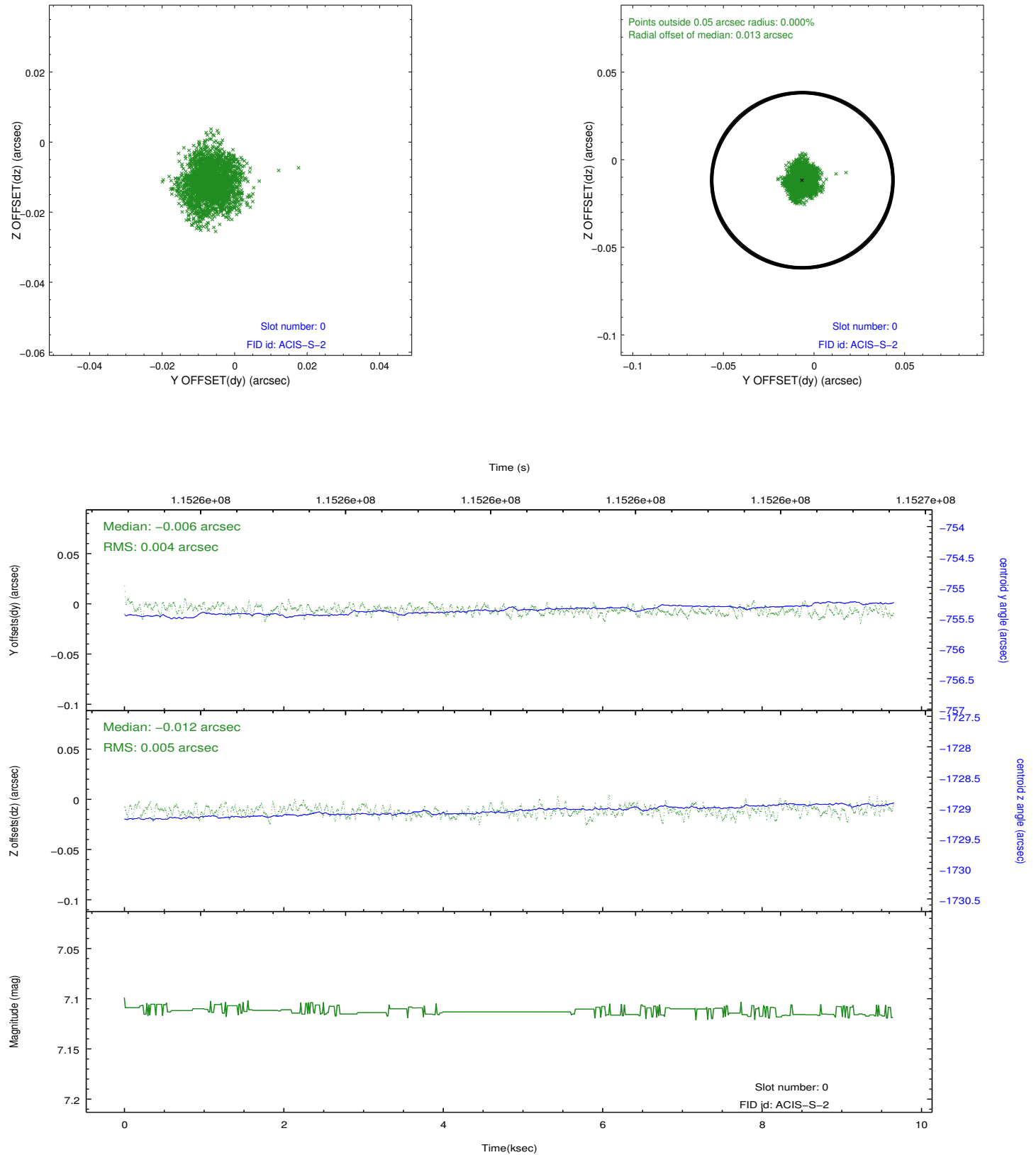


2.4.5 Slot 7

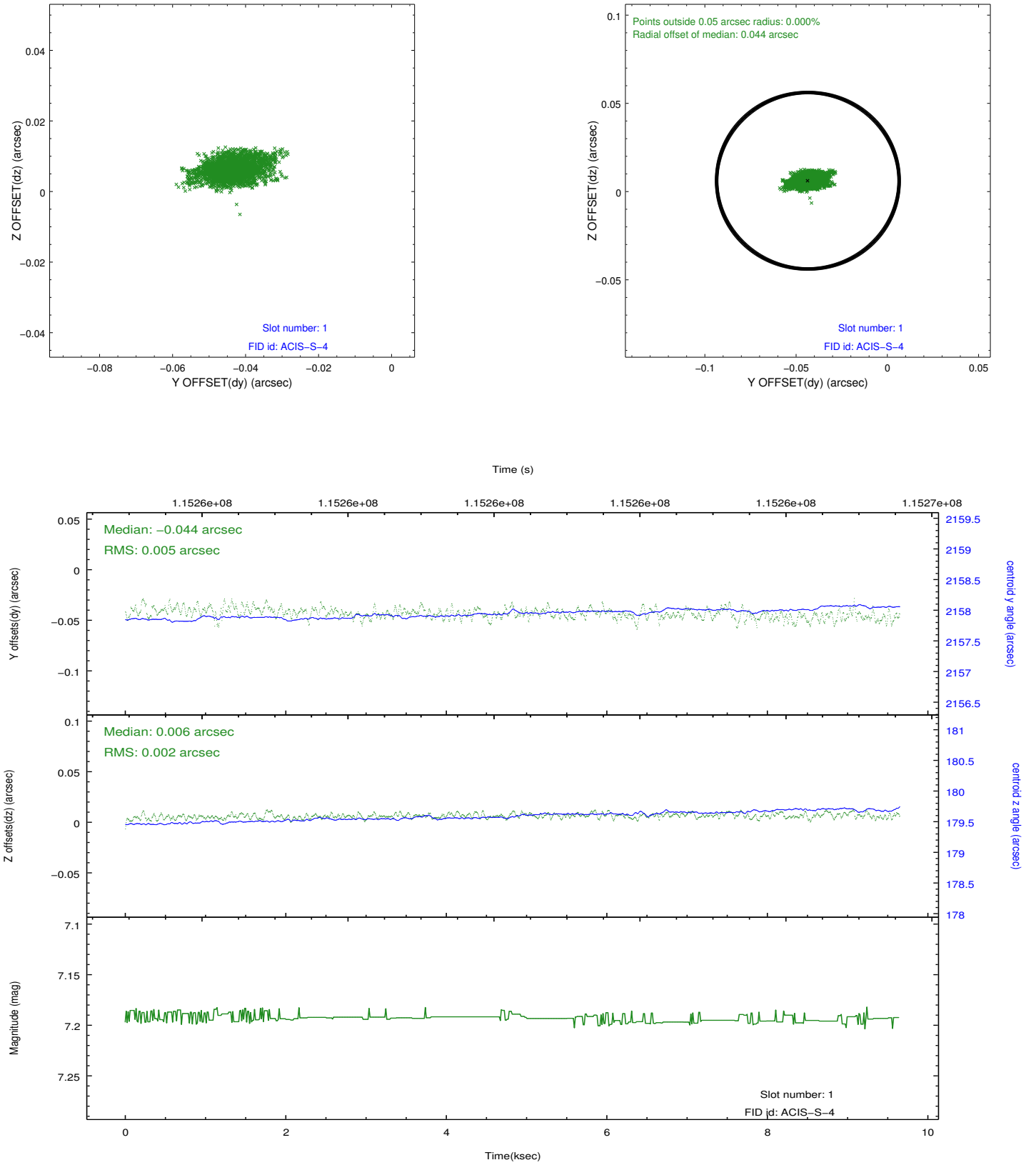


2.5 FID Slots

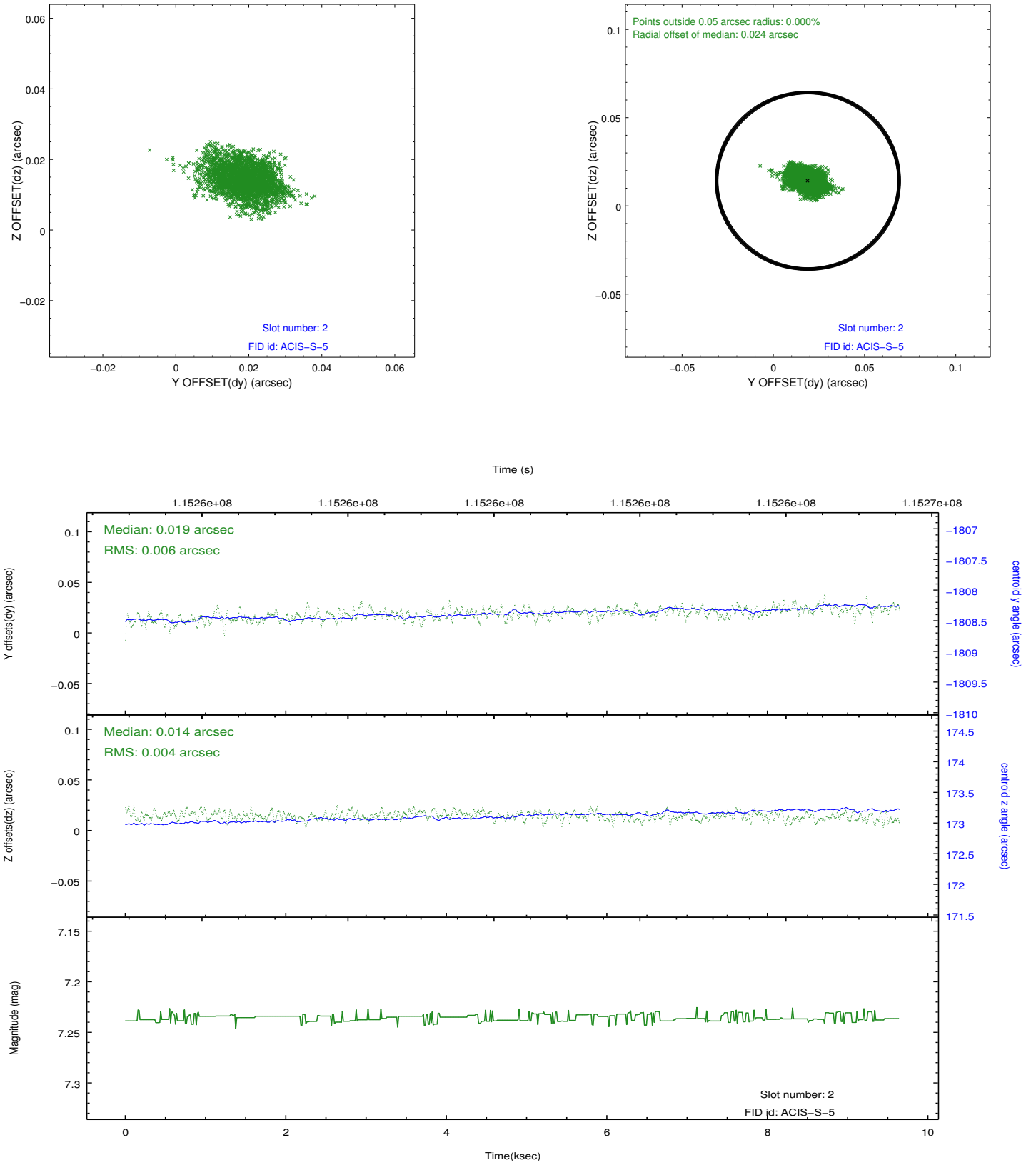
2.5.1 Slot 0



2.5.2 Slot 1



2.5.3 Slot 2



A Summary

A.1 Status

V&V Scientist	Beth Sundheim
V&V Date (YYYY-MM-DD)	2012.09.26
V&V Edition	1
V&V Disposition and Status	OK
V&V Charge Time	9.489

A.2 Comments