

# V&V Reference Report

## L2 ASCDS Version : 7.6.9

Observation 1649 - L2 Version 001  
Chandra X-Ray Center

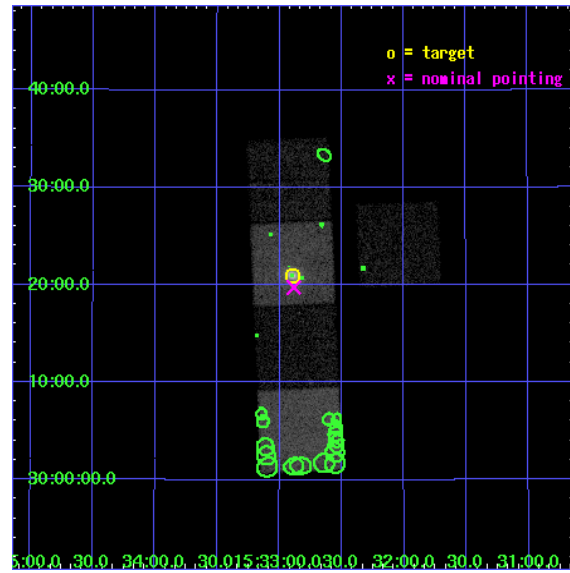
L2 Processing Date : Dec 21 2006

## Contents

<b>1</b>	<b>Front</b>	<b>2</b>
<b>2</b>	<b>OBI</b>	<b>3</b>
2.1	OBI . . . . .	3
2.1.1	Images . . . . .	3
2.1.2	Bias . . . . .	3
2.1.3	Parameters . . . . .	4
2.1.4	Events . . . . .	4
2.2	Compared Parameters . . . . .	5
2.3	Aspect . . . . .	6
2.4	Star Slots . . . . .	9
2.4.1	Slot 3 . . . . .	9
2.4.2	Slot 4 . . . . .	10
2.4.3	Slot 5 . . . . .	11
2.4.4	Slot 6 . . . . .	12
2.4.5	Slot 7 . . . . .	13
2.5	FID Slots . . . . .	14
2.5.1	Slot 0 . . . . .	14
2.5.2	Slot 1 . . . . .	15
2.5.3	Slot 2 . . . . .	16
<b>3</b>	<b>Point Sources</b>	<b>17</b>
<b>A</b>	<b>Summary</b>	<b>18</b>
A.1	Status . . . . .	18
A.2	Comments . . . . .	18

# 1 Front

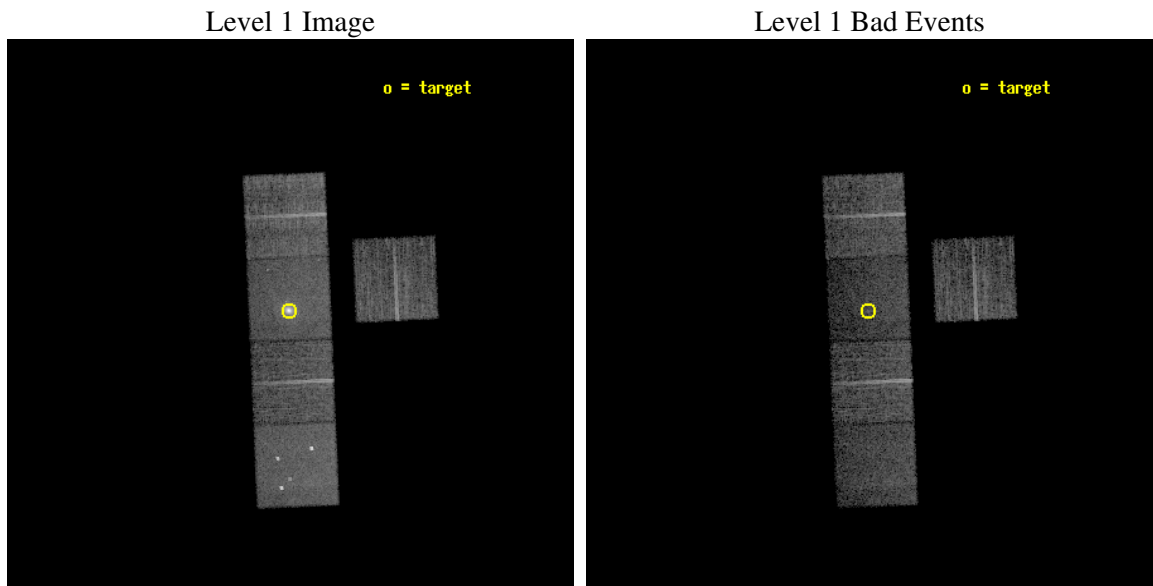
seq_num	800117
obs_id	1649
title	THE COOLING FLOW IN RXJ1532.9+3021
observer	Prof Andrew Fabian
object	RXJ1532
dtcycle	0
cycle	P
ra_targ	233.224167
dec_targ	30.35
ra_nom	233.221053712
dec_nom	30.329317102658
roll_nom	267.49608940044
revision	2
ontime	9489.099981755
livetime	9365.1179047196
ontime3	9489.099981755
ontime5	9489.099981755
ontime6	9489.099981755
ontime7	9489.099981755
ontime8	9489.099981755
l2events	77812



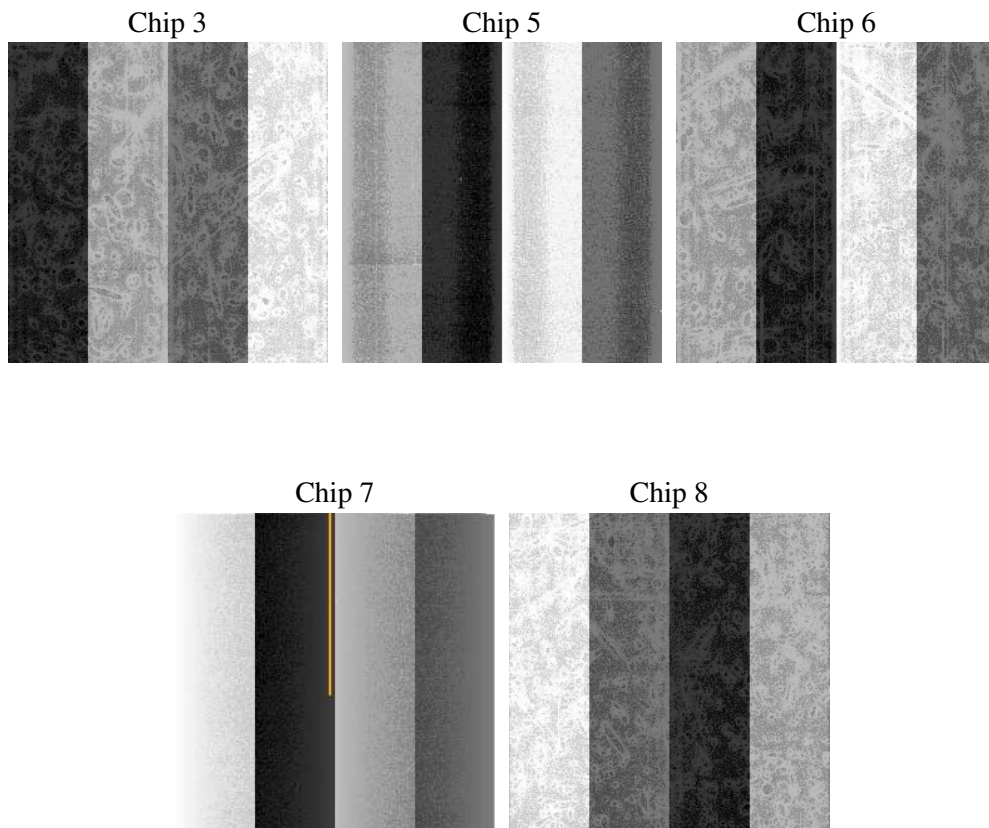
## 2 OBI

### 2.1 OBI

#### 2.1.1 Images



#### 2.1.2 Bias



### 2.1.3 Parameters

obi_num	0
ascdsver	7.6.9
caldbver	3.2.4
date	2006-12-21T21:29:44
revision	2

sched_exp_time	9470.000000
ontime	9492.0985849947
ontime3	9492.0985550731
ontime5	9492.0985849947
ontime6	9492.0985849947
ontime7	9492.0985849947
ontime8	9492.0985550731
l1events	304061

### 2.1.4 Events

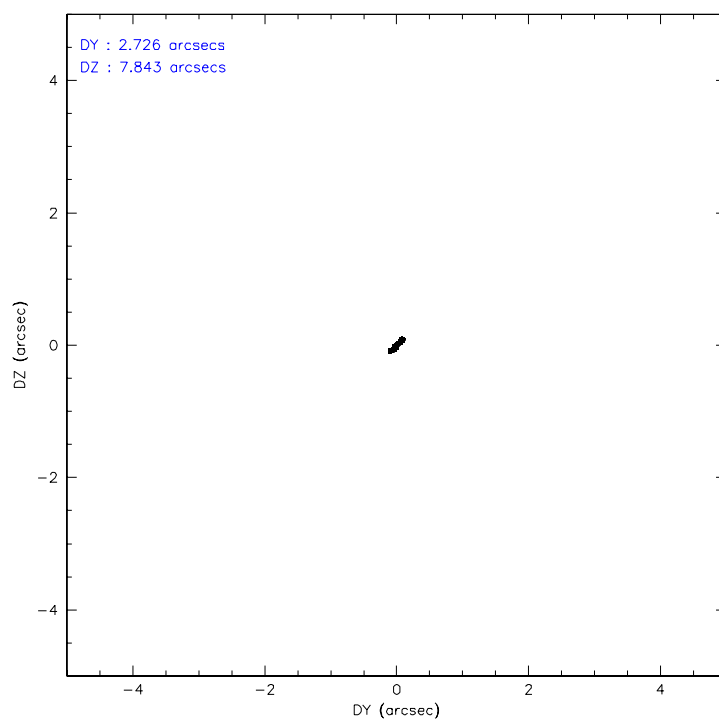
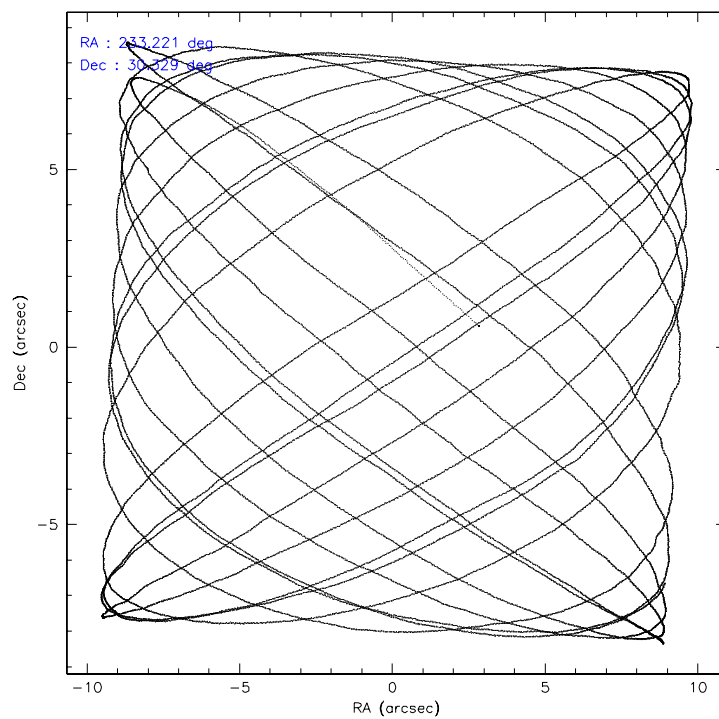
	<b>ccd 3</b>	<b>ccd 5</b>	<b>ccd 6</b>	<b>ccd 7</b>	<b>ccd 8</b>
level 1 events	50869	69565	51980	65444	66203
rejected events	46297	33402	46617	30108	49936
rejected %	91%	48%	89%	46%	75%

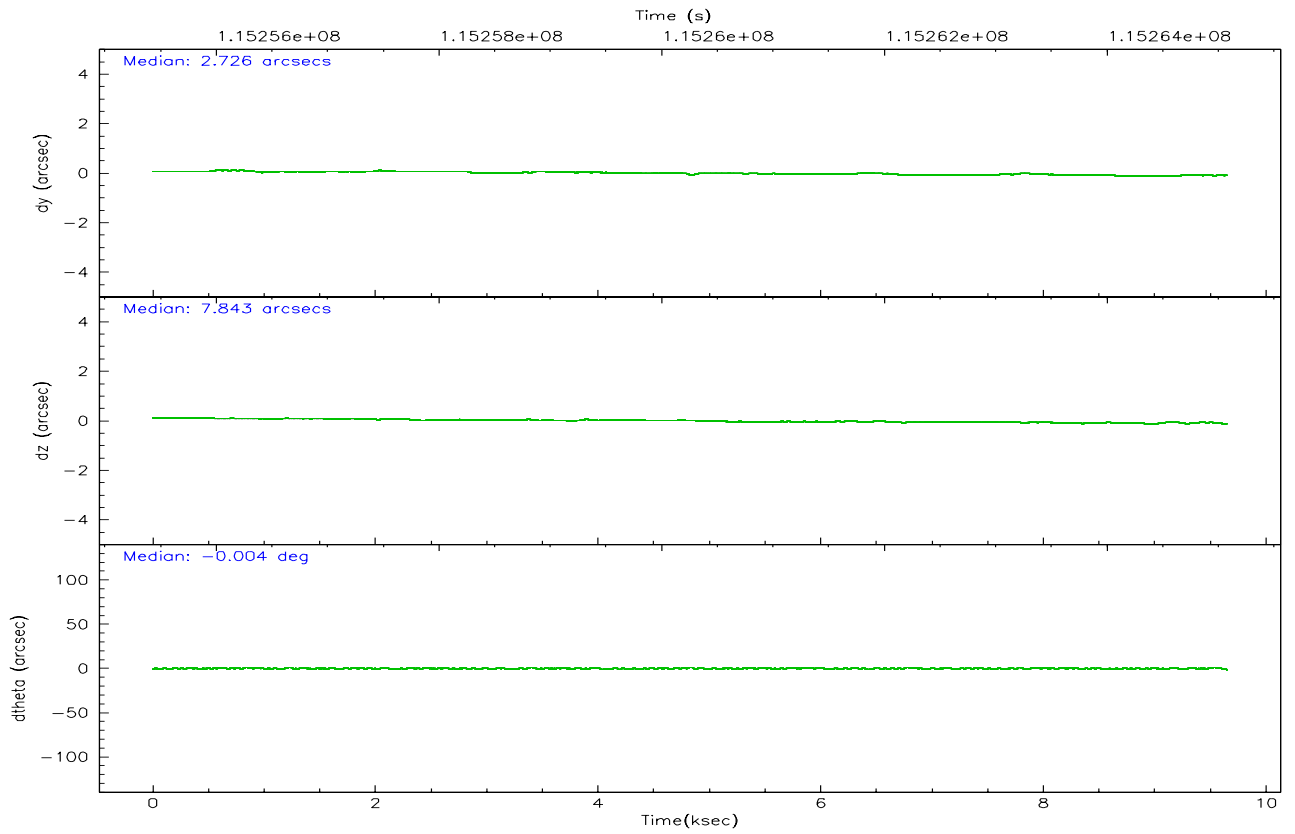
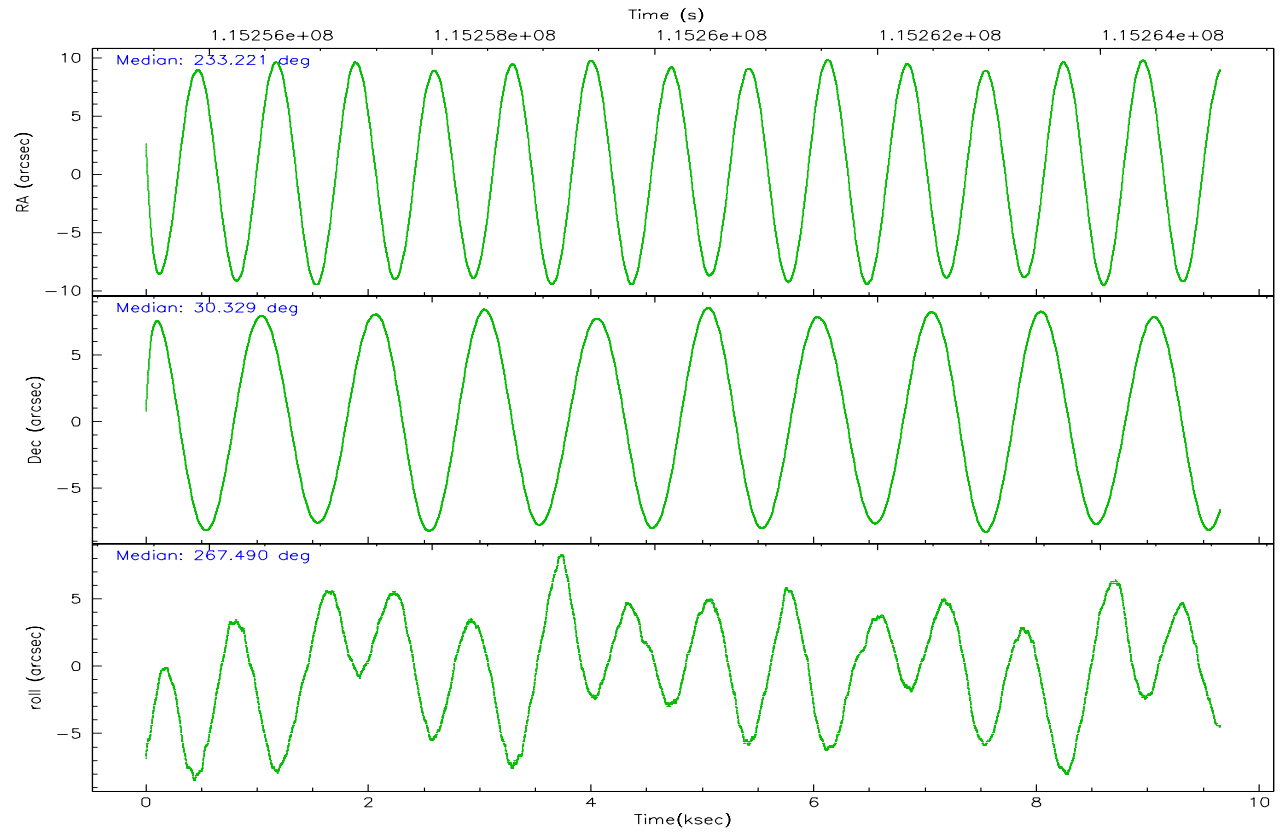
	<b>ccd 3</b>	<b>ccd 5</b>	<b>ccd 6</b>	<b>ccd 7</b>	<b>ccd 8</b>
grade 0 events	1622	6219	1920	5472	5132
	3%	8%	3%	8%	7%
grade 1 events	24	67	29	30	43
	0%	0%	0%	0%	0%
grade 2 events	964	9699	1134	9002	3132
	1%	13%	2%	13%	4%
grade 3 events	532	1260	634	2831	2083
	1%	1%	1%	4%	3%
grade 4 events	520	1762	640	2762	1924
	1%	2%	1%	4%	2%
grade 5 events	1698	3449	1949	4189	2551
	3%	4%	3%	6%	3%
grade 6 events	936	17238	1041	15278	3998
	1%	24%	2%	23%	6%
grade 7 events	44573	29871	44633	25880	47340
	87%	42%	85%	39%	71%

## 2.2 Compared Parameters

Parameter	Planned	Actual	Parameter	Planned	Actual
Instrument	ACIS	ACIS	Obspar format version number	6	6
Detector	ACIS-35678	ACIS-35678	Obspar file type	PREDICTED	ACTUAL
Grating	NONE	NONE	Obspar update status	NONE	UPDATED
Data mode	VFAINT	VFAINT	Number of optional ACIS chips dropped	0	0
Observation mode	POINTING	POINTING	On-chip summing requested	N	N
Pointing RA	233.206177	233.2210537119967	Subarray requested	NONE	NONE
Pointing Dec	30.353393	30.32931710265842	Alternating exposures requested	N	N
Pointing Roll	267.346977	267.4960894004395	Primary exposure time	0.000000	3.1
SIM focus pos (mm)	-0.684267	-0.6828225247311905			
SIM defocus (mm)	0	0.001444936568705701			
SIM translation stage pos (mm)	-190.132523	-190.1400660498719			
SIM translation stage offset (mm)	0	0.00754346686406393			
Observation start time	115255614.184000	115254557.74996			
Observation start date	2001-08-26T23:25:50	2001-08-26T23:09:17			
Observation end time	115265084.184000	115265628.2629			
Observation end date	2001-08-27T02:03:40	2001-08-27T02:13:48			
Read mode	TIMED	TIMED			

## 2.3 Aspect





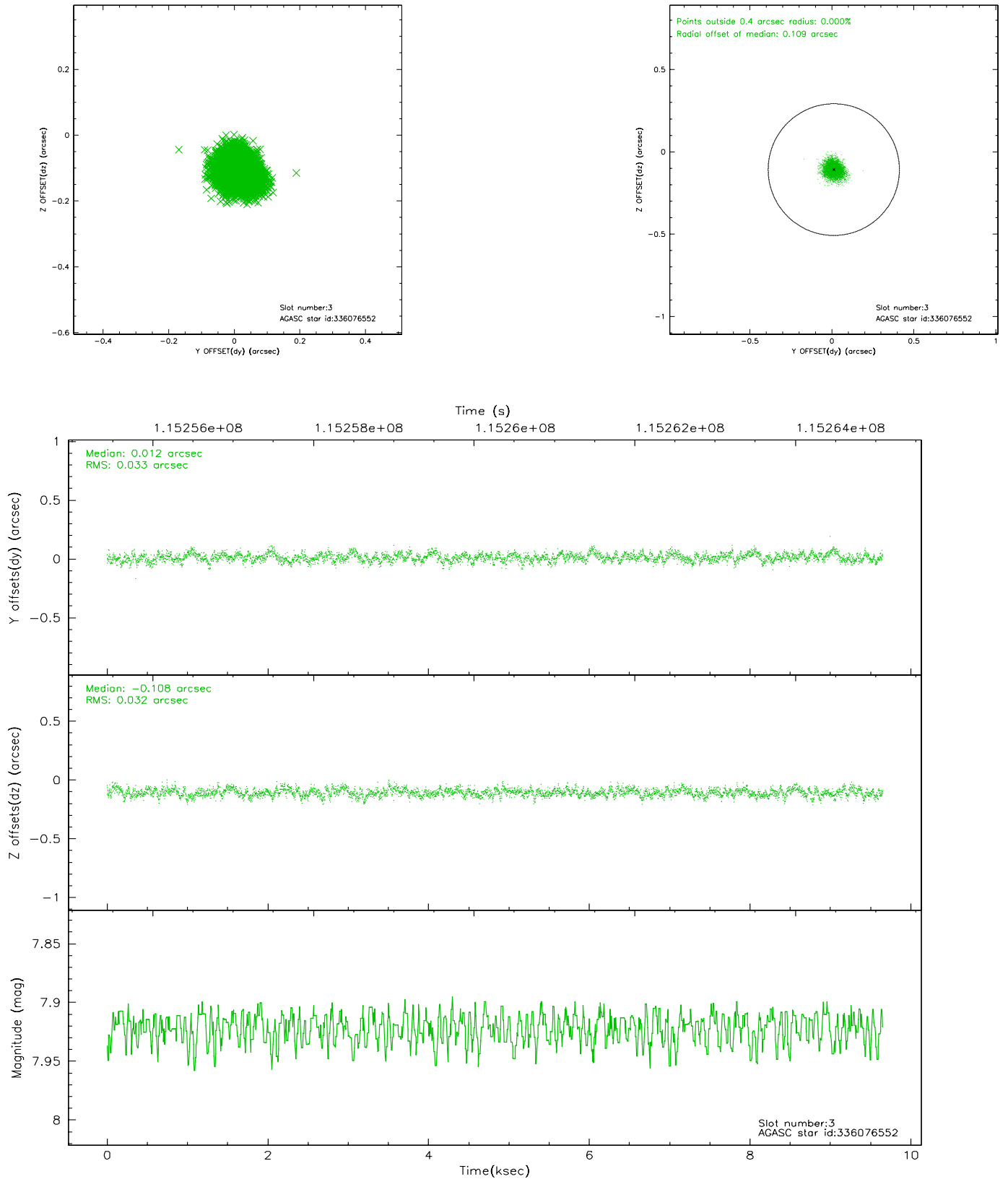
### Slot Statistics

slot	status	id	mag	n_pts	med_dy	med_dz	dr1	dr2	ra	dec	mean_y	mean_z
0	FID	ACIS-S-2	7.11	2353	0.005	0.012	0.007	0.010	0.000000	0.000000	-755.36	-1729.02
1	FID	ACIS-S-4	7.19	2353	-0.085	-0.006	0.005	0.009	0.000000	0.000000	2157.58	178.86
2	FID	ACIS-S-5	7.24	2353	0.049	0.003	0.007	0.011	0.000000	0.000000	-1807.43	173.19
3	GUIDE	336076552	7.92	4708	0.012	-0.108	0.049	0.079	233.235475	30.281222	255.70	103.70
4	GUIDE	336069096	8.73	4709	0.087	0.013	0.066	0.108	232.784424	30.008451	1299.58	-1255.04
5	GUIDE	336068920	9.08	4705	0.026	0.118	0.087	0.136	233.818662	30.014906	1124.26	1964.18
6	GUIDE	336070048	9.10	4709	-0.097	0.011	0.075	0.121	232.735573	30.873902	-1806.90	-1538.41
7	GUIDE	336074336	9.27	4706	-0.028	-0.037	0.083	0.135	232.713714	30.669381	-1068.95	-1575.77

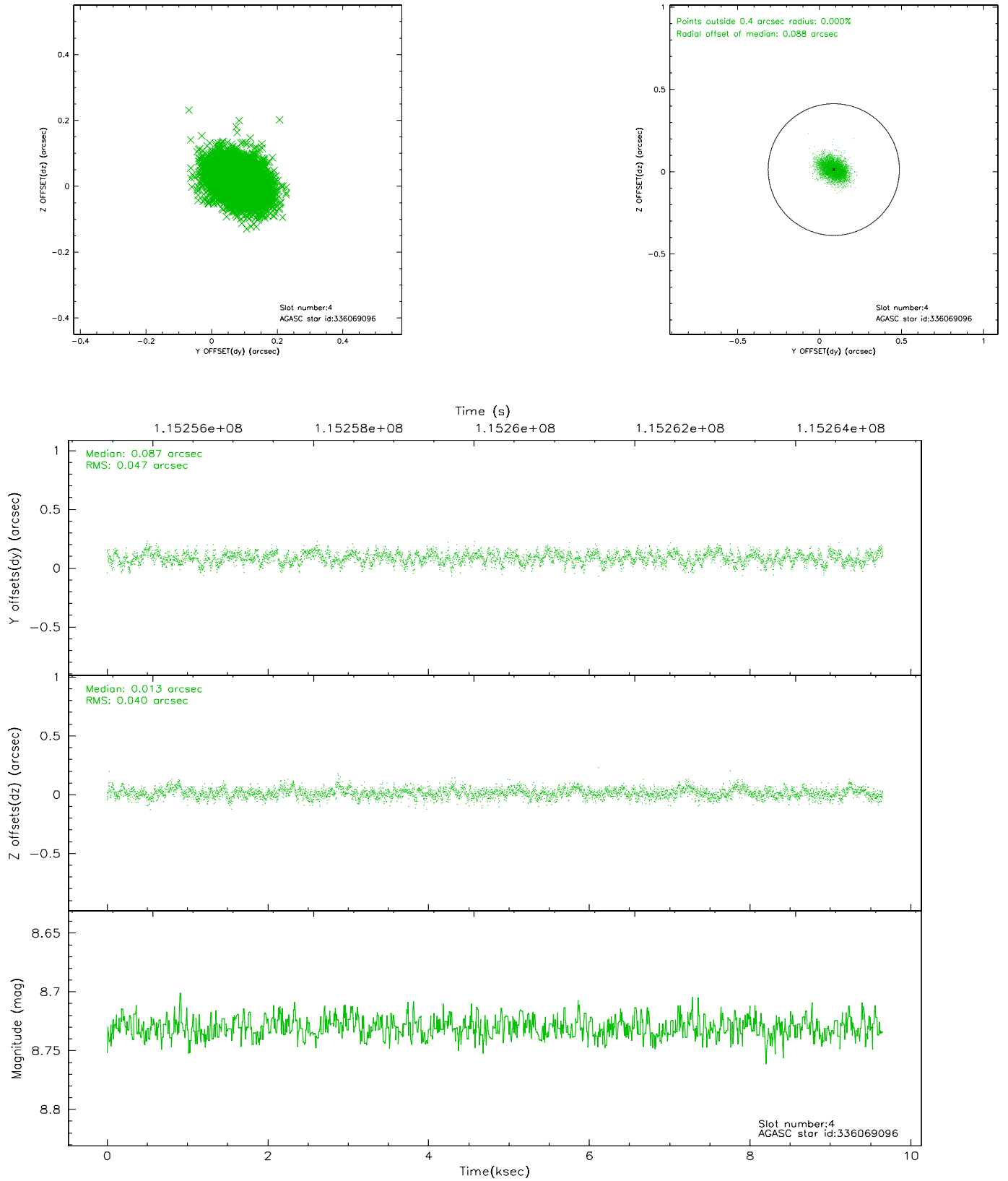


## 2.4 Star Slots

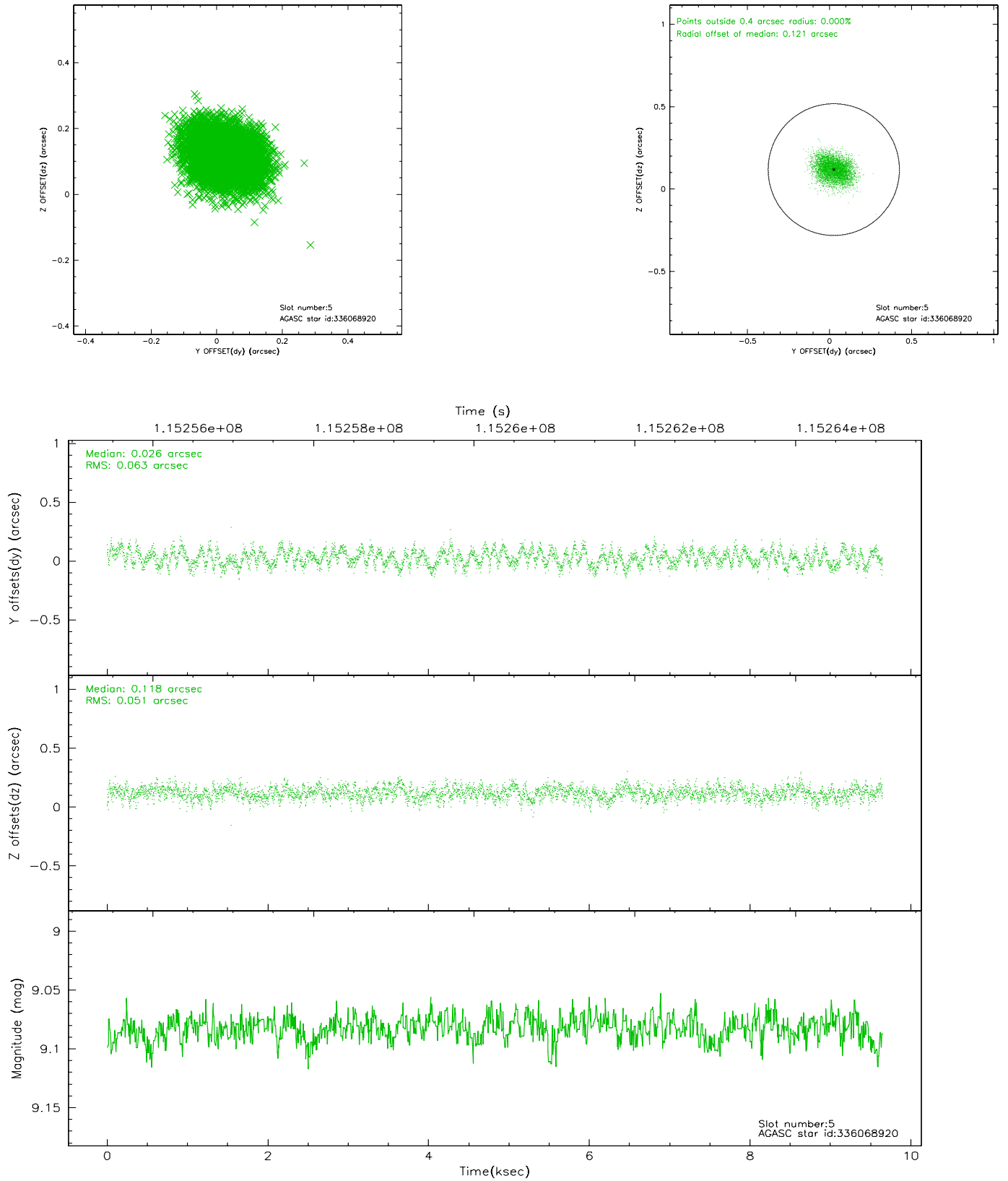
### 2.4.1 Slot 3



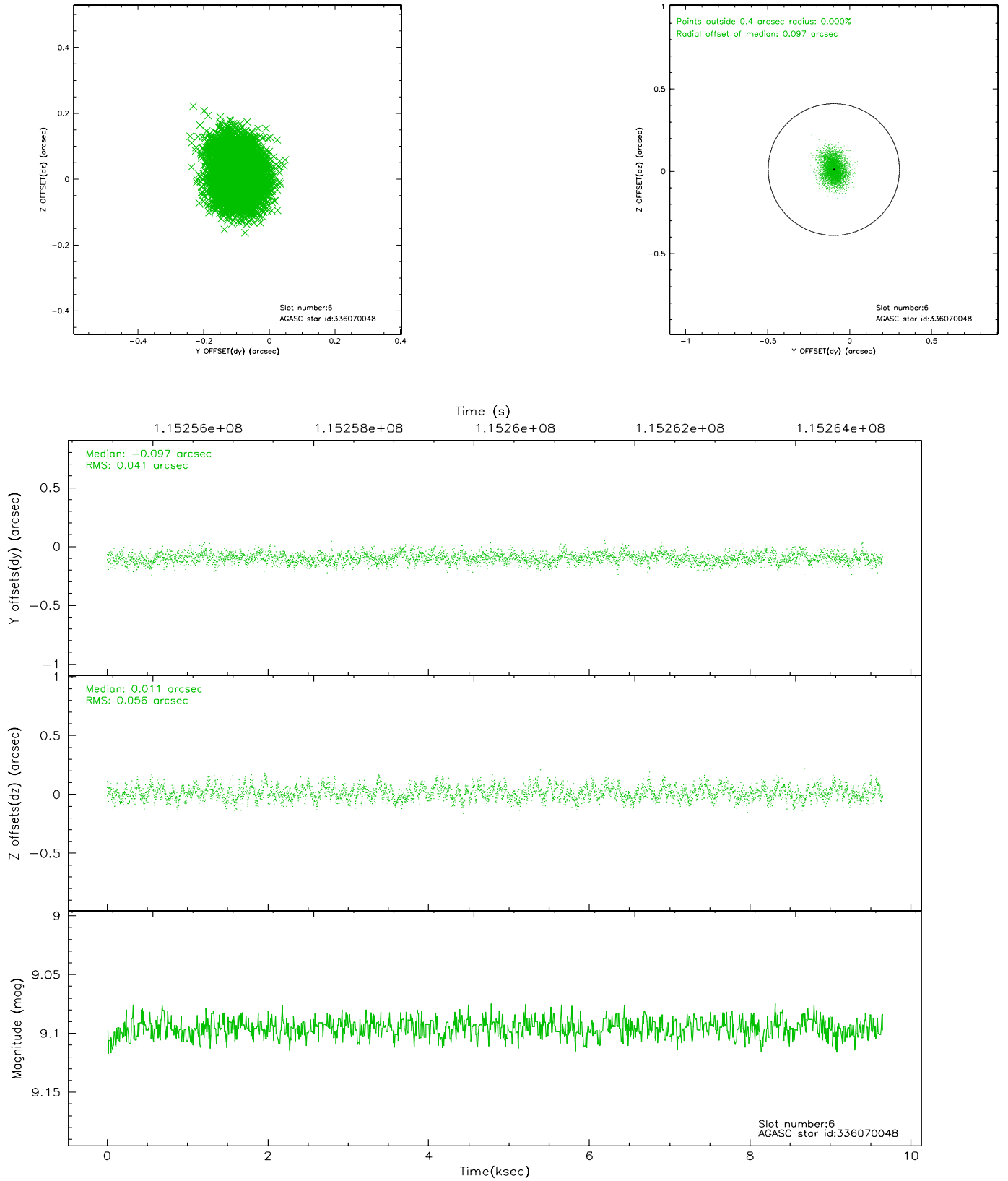
## 2.4.2 Slot 4



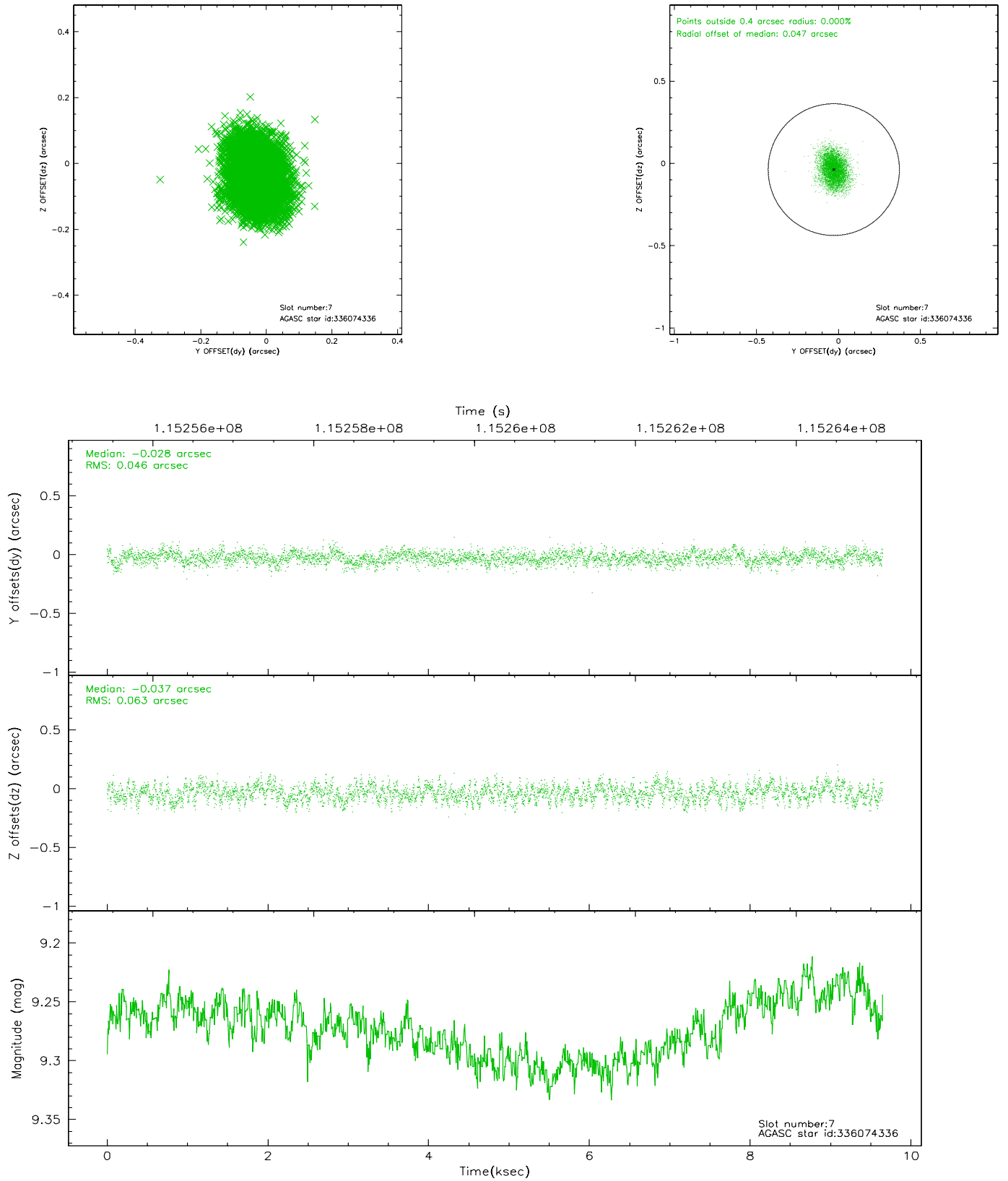
### 2.4.3 Slot 5



## 2.4.4 Slot 6

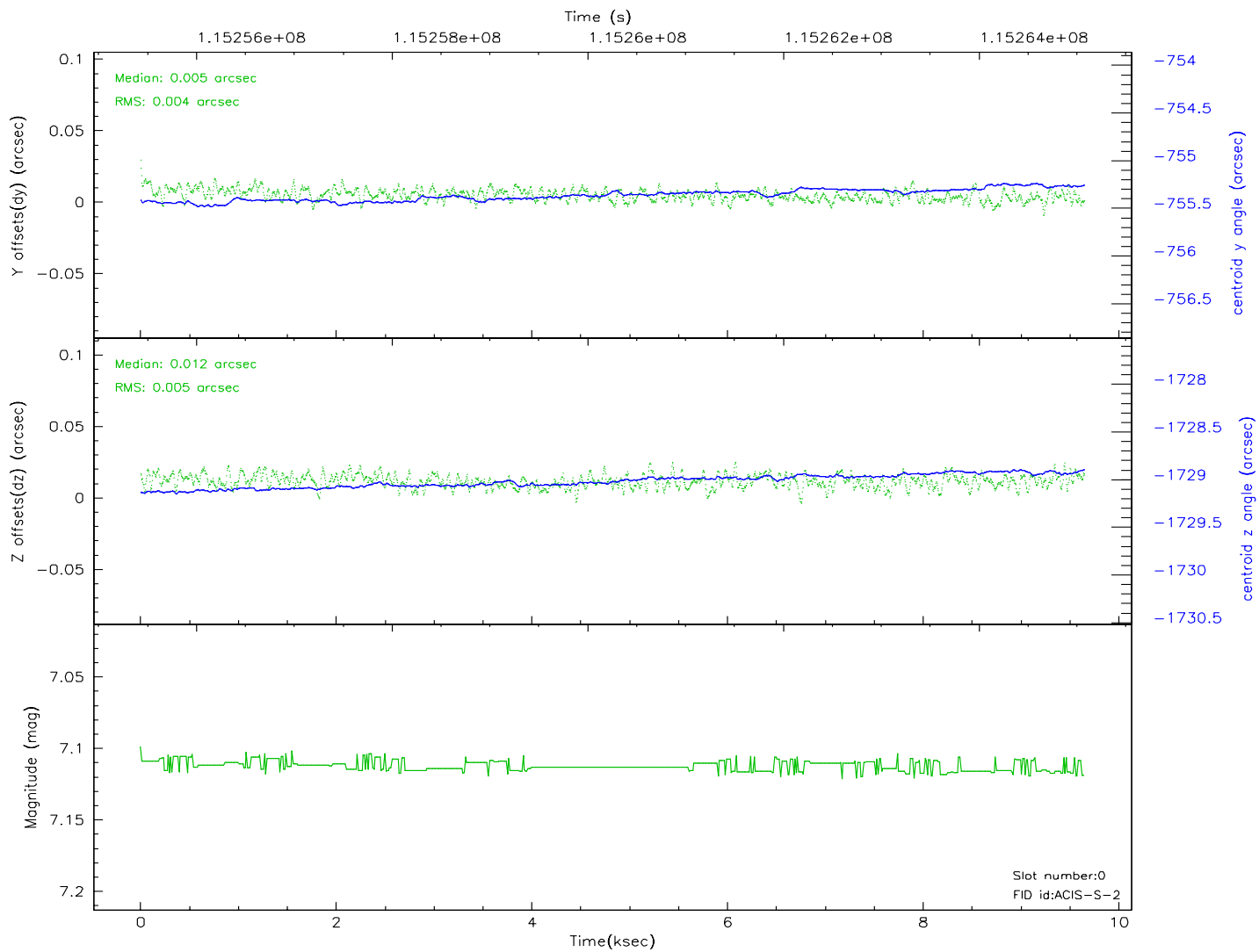
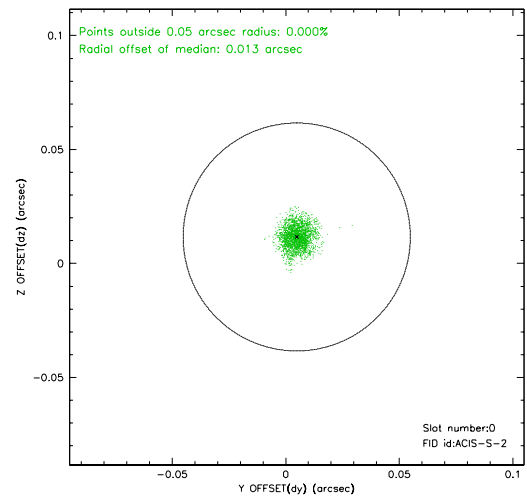
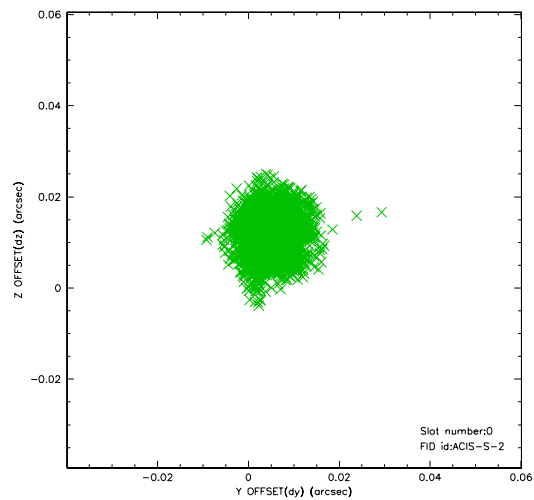


## 2.4.5 Slot 7

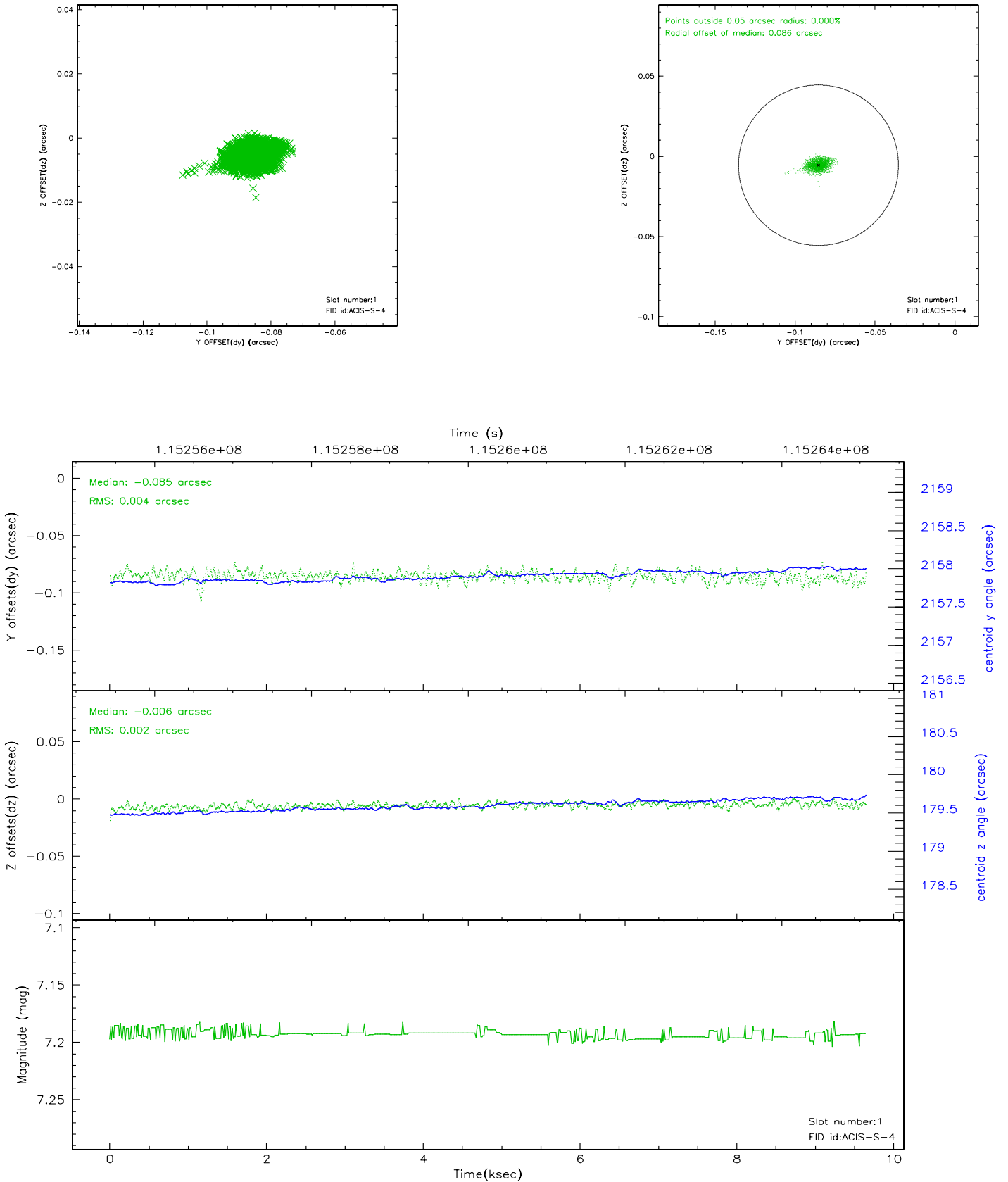


## 2.5 FID Slots

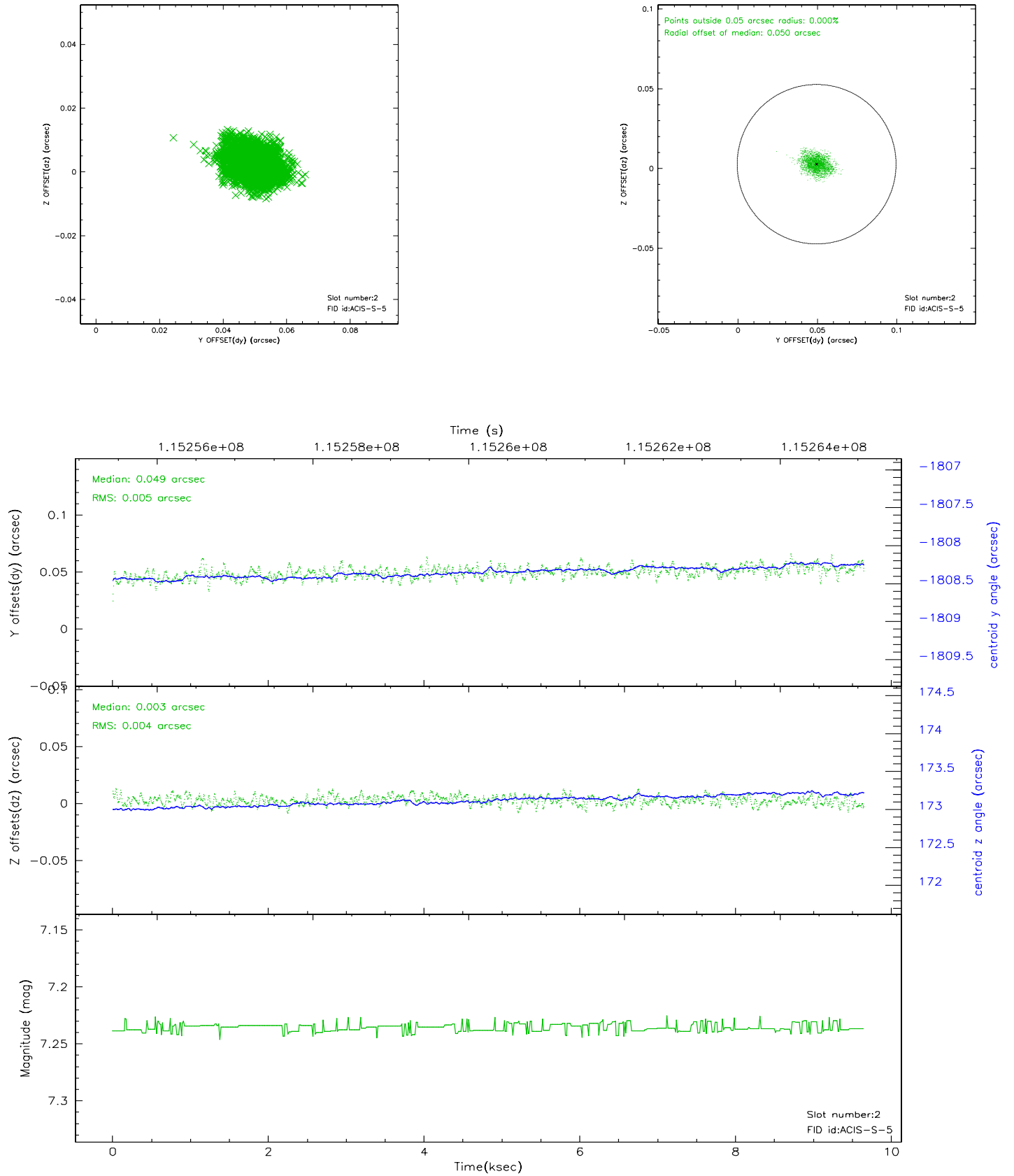
### 2.5.1 Slot 0



## 2.5.2 Slot 1

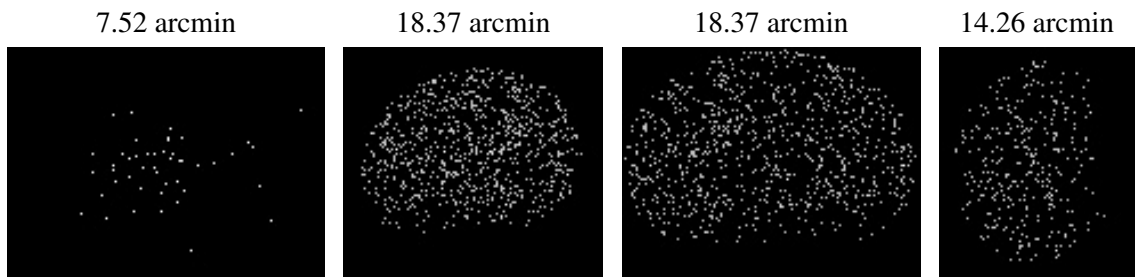


### 2.5.3 Slot 2





### 3 Point Sources



## A Summary

### A.1 Status

V&V Scientist	Jen Lauer
V&V Date (YYYY-MM-DD)	2006.12.22
V&V Edition	1
V&V Disposition and Status	OK
V&V Charge Time	9.489

### A.2 Comments