

V&V Reference Report

L2 ASCDS Version : 8.4.5

Observation 1648 - L2 Version 3
Chandra X-Ray Center

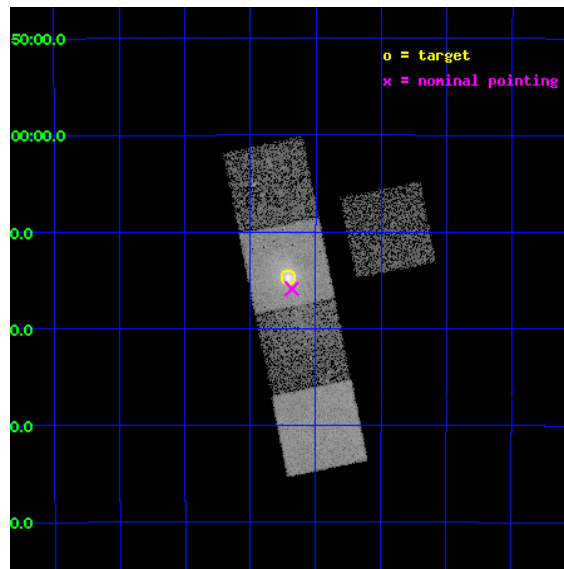
L2 Processing Date : Sep 17 2012

Contents

1	Front	2
2	OBI	3
2.1	OBI	3
2.1.1	Images	3
2.1.2	Bias	3
2.1.3	Parameters	4
2.1.4	Events	4
2.2	Compared Parameters	5
2.3	Aspect	6
2.4	Star Slots	9
2.4.1	Slot 3	9
2.4.2	Slot 4	10
2.4.3	Slot 5	11
2.4.4	Slot 6	12
2.4.5	Slot 7	13
2.5	FID Slots	14
2.5.1	Slot 0	14
2.5.2	Slot 1	15
2.5.3	Slot 2	16
A	Summary	17
A.1	Status	17
A.2	Comments	17

1 Front

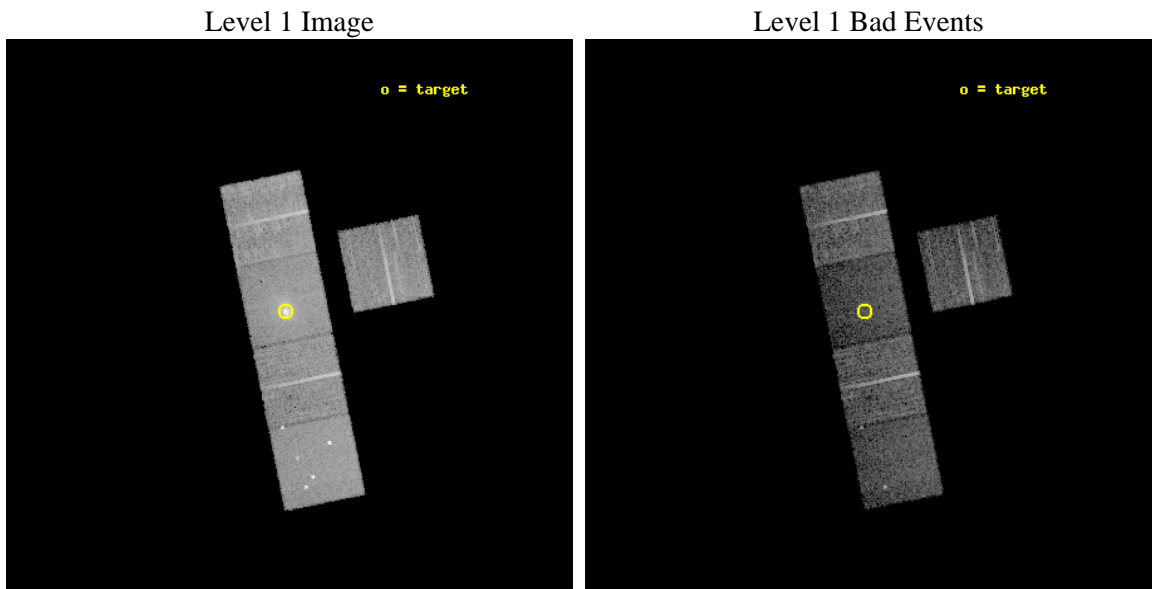
seq_num	800116	Sequence number
obs_id	1648	Observation id
title	THE COOLING FLOW IN A1664	Proposal title
observer	Professor Andrew Fabian	Principal investigator
object	A1664	Source name
dtcycle	0	
cycle	P	events from which exps? Prim/Second/Both
ra_targ	195.927083	Observer's specified target RA [deg]
dec_targ	-24.244722	Observer's specified target Dec [deg]
ra_nom	195.92062706689	Nominal RA [deg]
dec_nom	-24.264783256063	Nominal Dec [deg]
roll_nom	258.47534565804	Nominal Roll [deg]
revision	3	Processing version of data
ontime	9910.1695580333	Sum of GTIs [s]
livetime	9780.685896997	Livetime [s]
ontime3	9910.0464380383	Sum of GTIs [s]
ontime5	9910.12851803	Sum of GTIs [s]
ontime6	9910.0874780267	Sum of GTIs [s]
ontime7	9910.1695580333	Sum of GTIs [s]
ontime8	9900.5823079497	Sum of GTIs [s]
l2events	90701	Number of level 2 events



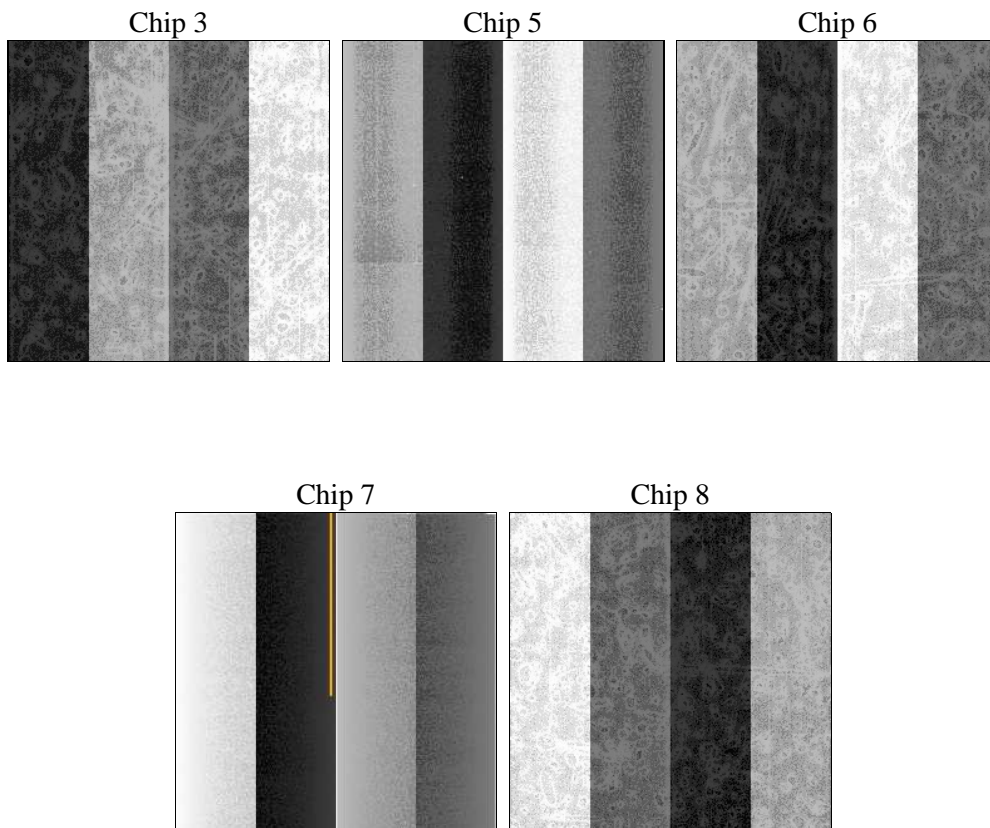
2 OBI

2.1 OBI

2.1.1 Images



2.1.2 Bias



2.1.3 Parameters

obi_num	0	Obi number	sched_exp_time	10140.000000	[s] Scheduled observation exposure time
ascdsver	8.4.5	Processing system revision	ontime	9910.1695580333	Sum of GTIs [s]
caldbver	4.5.1.1	 	ontime3	9910.0464380383	Sum of GTIs [s]
date	2012-09-17T18:33:03	Date and time of file creation	ontime5	9910.12851803	Sum of GTIs [s]
revision	3	Processing version of data	ontime6	9910.0874780267	Sum of GTIs [s]
			ontime7	9910.1695580333	Sum of GTIs [s]
			ontime8	9900.5823079497	Sum of GTIs [s]
			l1events	328846	Number of level 1 events

2.1.4 Events

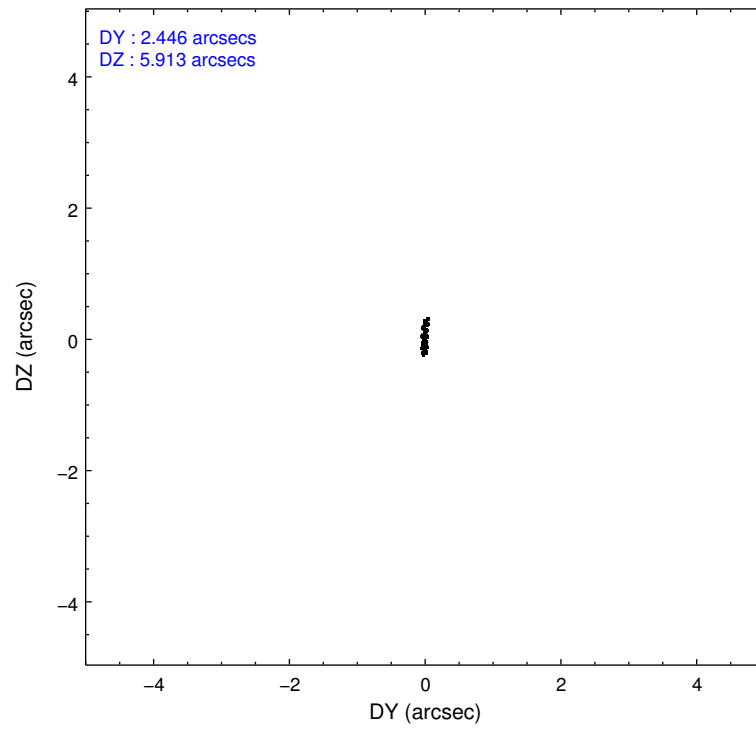
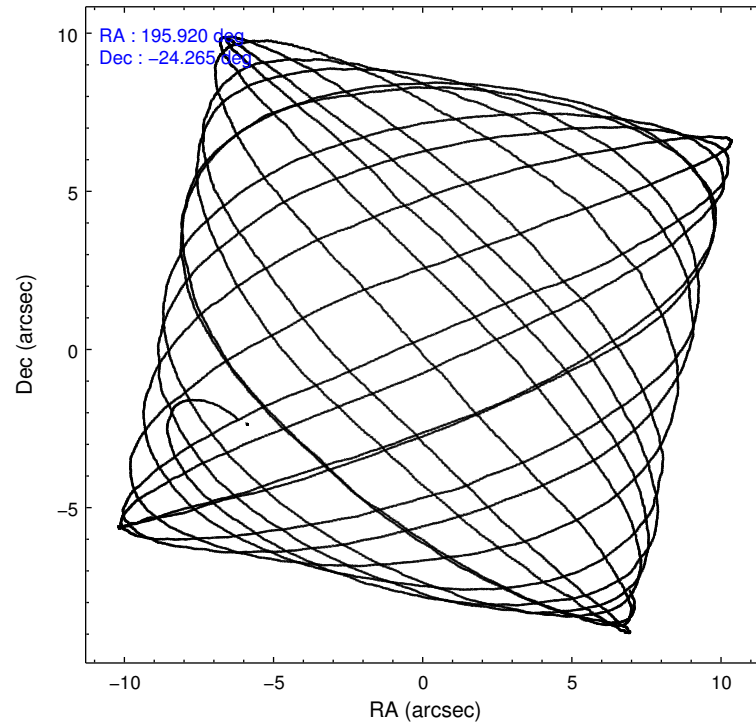
	ccd 3	ccd 5	ccd 6	ccd 7	ccd 8
level 1 events	52650	73336	57452	74196	71212
rejected events	47871	35142	49630	30754	56286
rejected %	90%	47%	86%	41%	79%

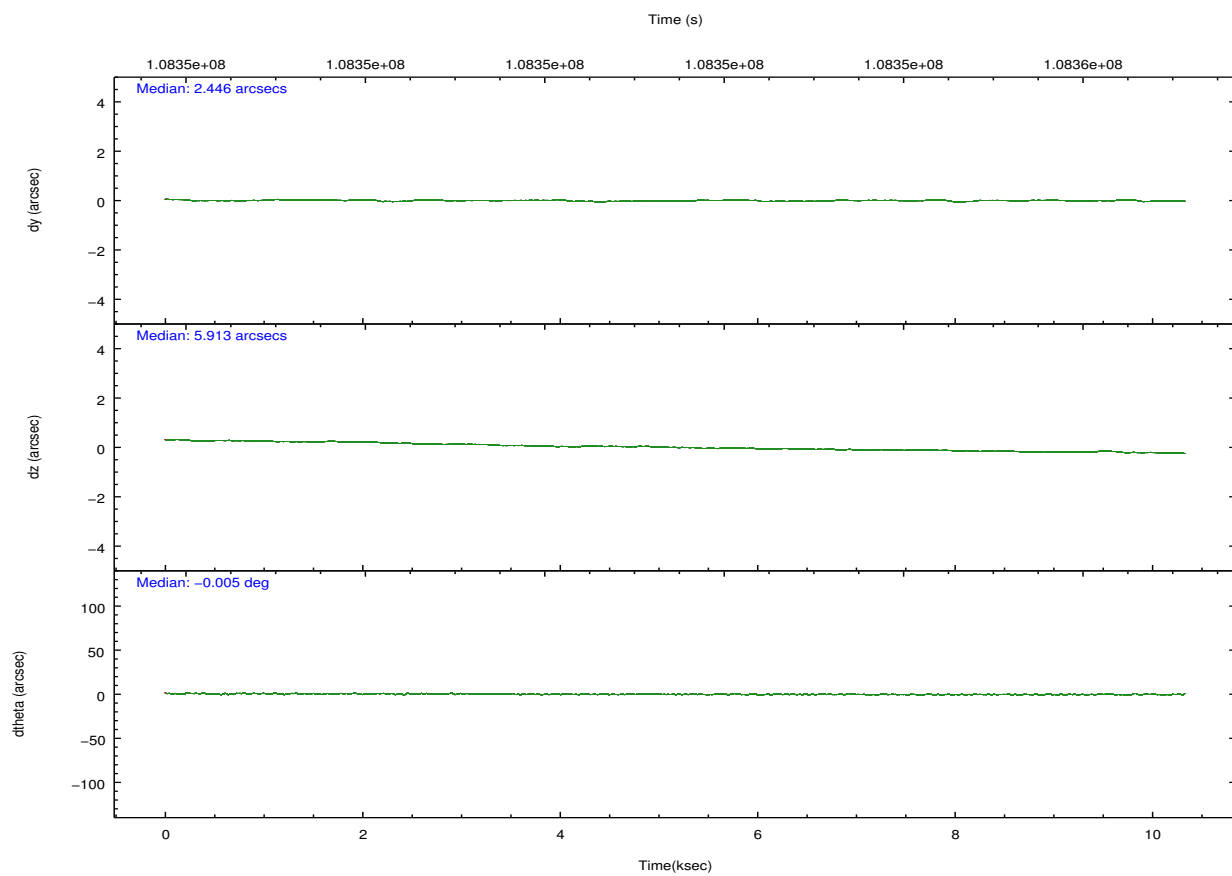
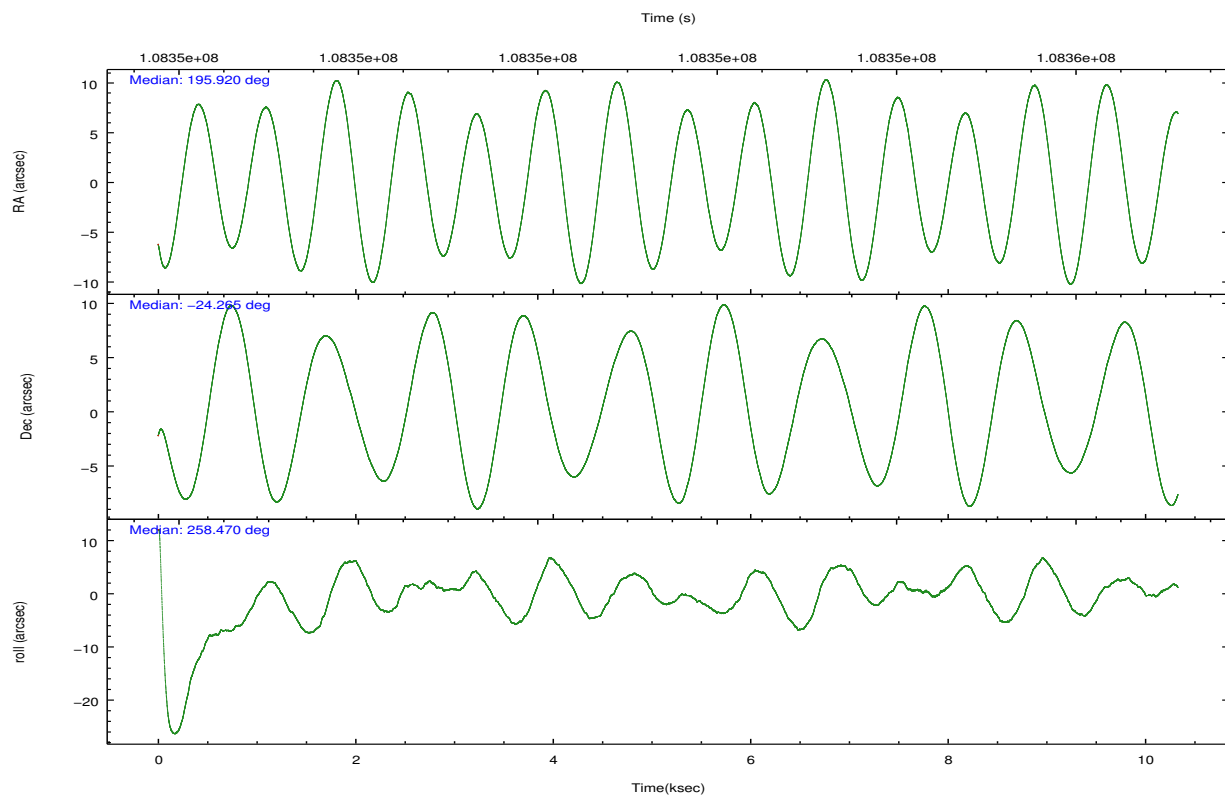
	ccd 3	ccd 5	ccd 6	ccd 7	ccd 8
grade 0 events	1704	7496	3852	7702	4666
	3%	10%	6%	10%	6%
grade 1 events	18	122	33	49	44
	0%	0%	0%	0%	0%
grade 2 events	1036	9925	1397	9995	3179
	1%	13%	2%	13%	4%
grade 3 events	533	1690	682	4612	1673
	1%	2%	1%	6%	2%
grade 4 events	544	1653	699	4545	1602
	1%	2%	1%	6%	2%
grade 5 events	1829	5795	2032	5958	2697
	3%	7%	3%	8%	3%
grade 6 events	967	17455	1196	16608	3812
	1%	23%	2%	22%	5%
grade 7 events	46019	29200	47561	24727	53539
	87%	39%	82%	33%	75%

2.2 Compared Parameters

Parameter	Planned	Actual	Parameter	Planned	Actual
Instrument	ACIS	ACIS	Obspar format version number	7	7
Detector	ACIS-35678	ACIS-35678	Obspar file type	PREDICTED	ACTUAL
Grating	NONE	NONE	Obspar update status	NONE	UPDATED
Data mode	VFAINT	VFAINT	Number of optional ACIS chips dropped	0	0
Observation mode	POINTING	POINTING	On-chip summing requested	N	N
[deg] Pointing RA	195.910850	195.9206270668898	Subarray requested	NONE	NONE
[deg] Pointing Dec	-24.238939	-24.26478325606346	Alternating exposures requested	N	N
[deg] Pointing Roll	258.314651	258.4753456580359	[s] Primary exposure time	0.000000	3.1
[mm] SIM focus pos	-0.684267	-0.6828225247311905			
[mm] SIM defocus	0	0.001444936568705701			
[mm] SIM translation stage pos	-190.132523	-190.1400660498719			
[mm] SIM translation stage offset	0	0.00754346686406393			
[s] Observation start time (MET)	108346475.184000	108345845.81668			
Observation start date	2001-06-08T00:13:31	2001-06-08T00:04:05			
[s] Observation end time (MET)	108356615.184000	108357264.31712			
Observation end date	2001-06-08T03:02:31	2001-06-08T03:14:24			
Read mode	TIMED	TIMED			

2.3 Aspect



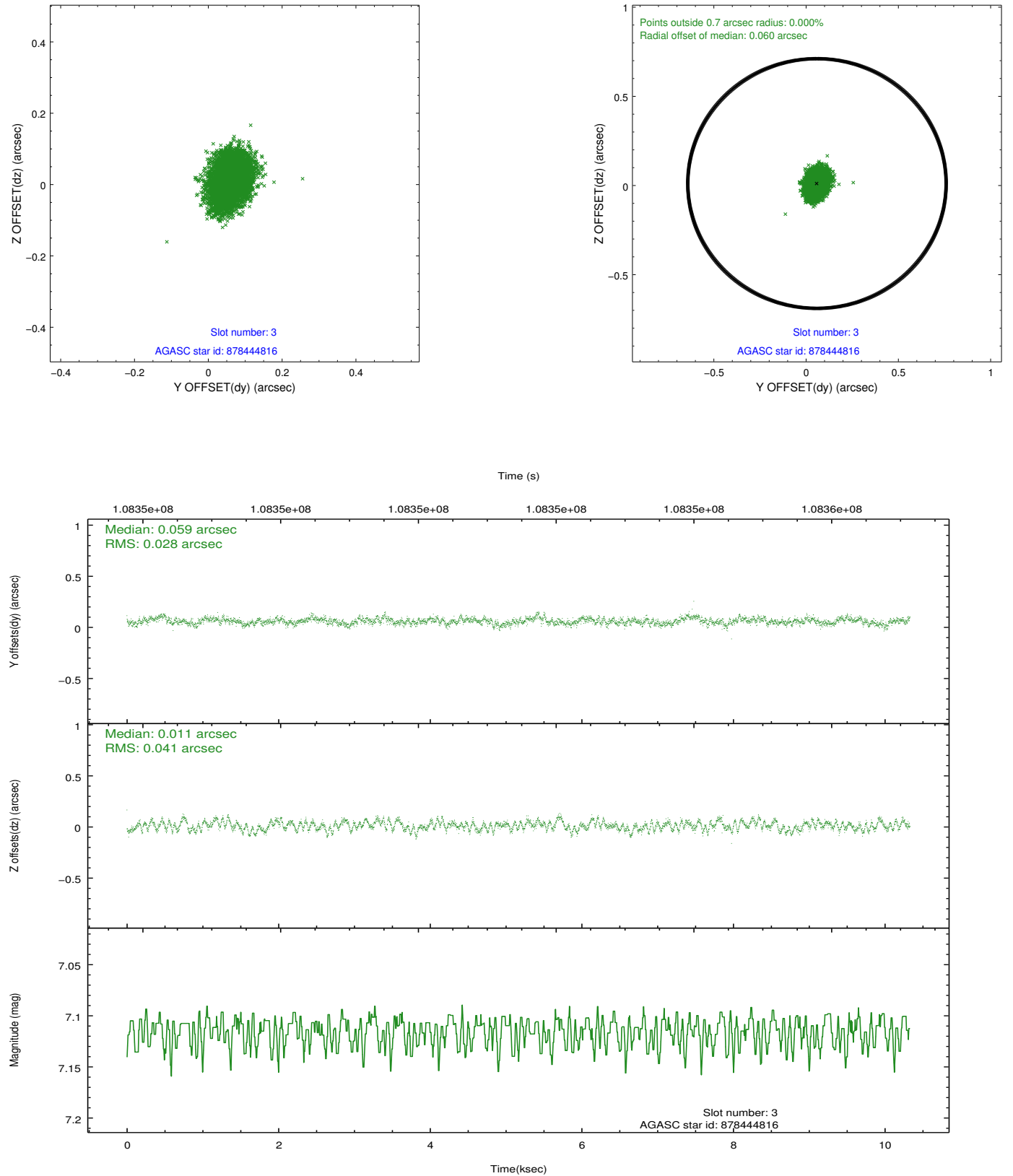


Slot Statistics

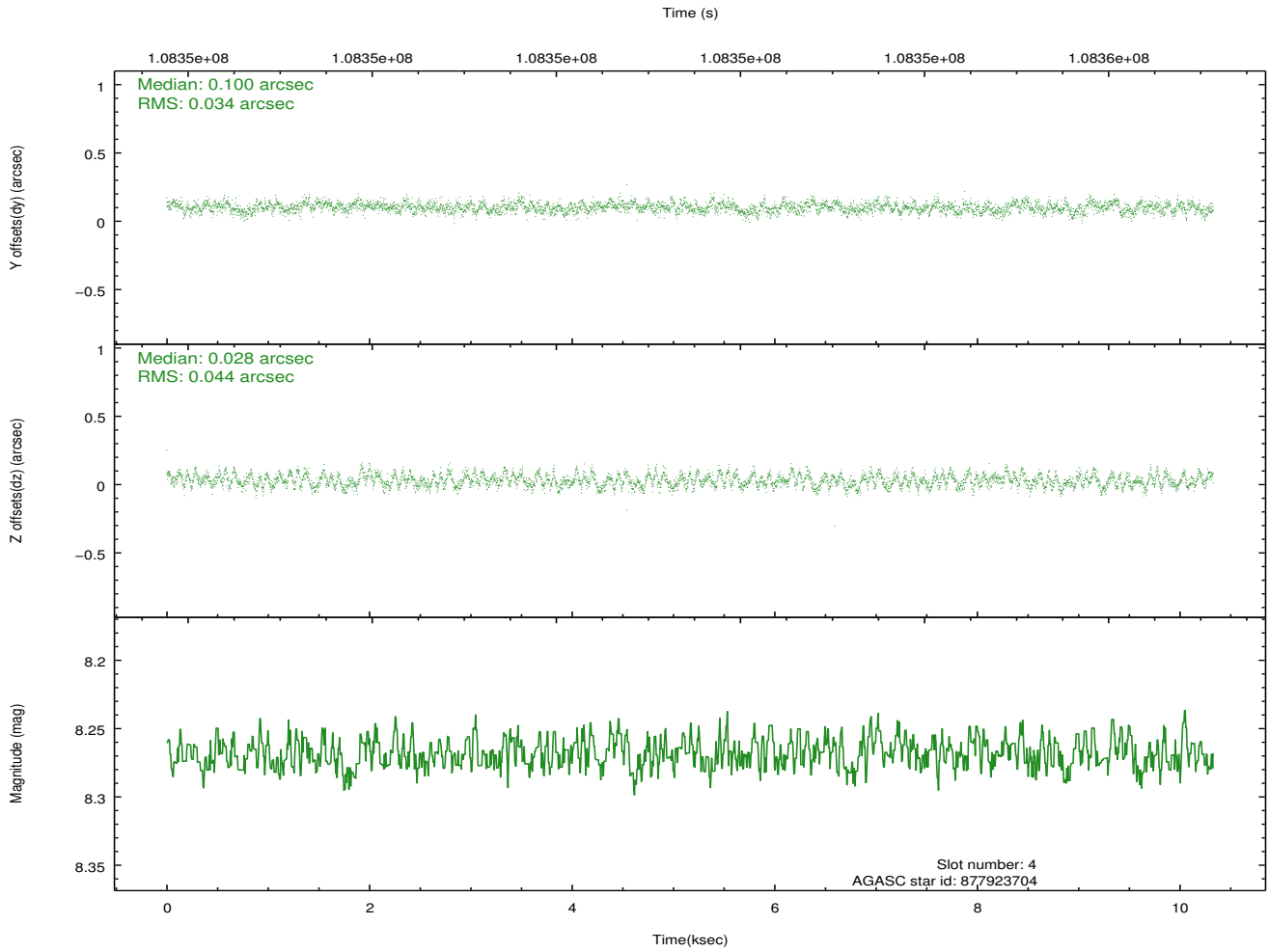
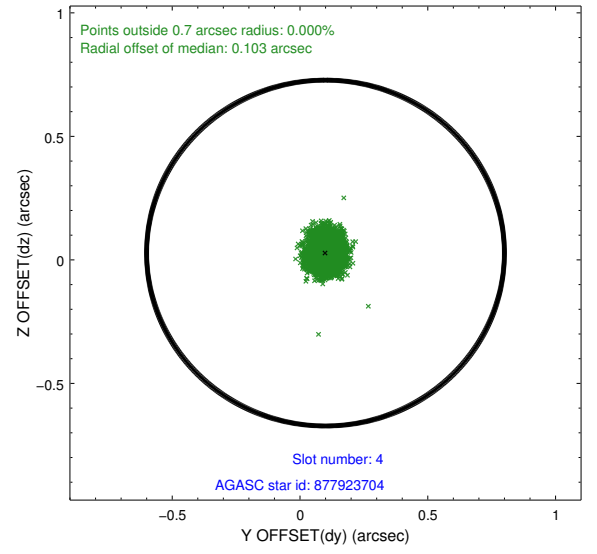
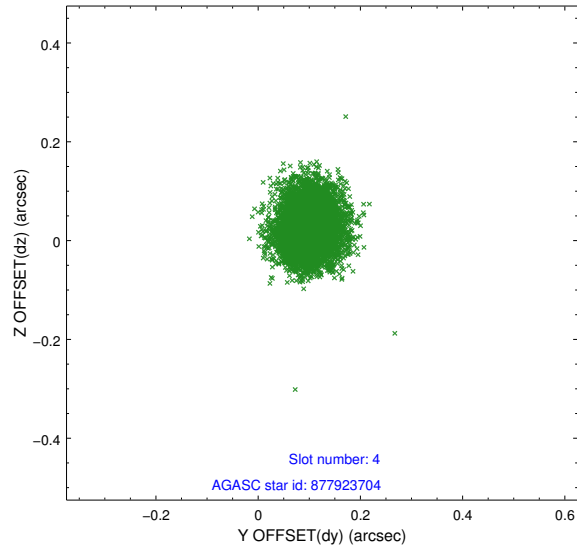
slot	status	id	mag	n_pts	med_dy	med_dz	dr1	dr2	ra	dec	mean_y	mean_z
0	FID	ACIS-S-2	7.11	2520	-0.035	0.002	0.007	0.011	0.000000	0.000000	-755.06	-1727.08
1	FID	ACIS-S-4	7.20	2520	-0.030	0.016	0.005	0.010	0.000000	0.000000	2157.95	180.96
2	FID	ACIS-S-5	7.24	2520	0.033	-0.010	0.006	0.011	0.000000	0.000000	-1807.23	175.09
3	GUIDE	878444816	7.11	5040	0.059	0.011	0.053	0.086	195.982981	-24.517217	932.51	435.38
4	GUIDE	877923704	8.27	5039	0.100	0.028	0.059	0.093	195.777573	-24.149712	-226.07	-492.57
5	GUIDE	877927208	9.72	5031	-0.166	-0.115	0.101	0.171	195.391934	-23.484537	-2310.25	-2226.81
6	GUIDE	877923048	10.08	4966	0.073	0.075	0.128	0.218	195.872266	-23.940618	-1027.07	-341.23
7	GUIDE	877924464	9.25	5038	-0.064	-0.005	0.077	0.123	196.557235	-24.291020	-242.36	2116.93

2.4 Star Slots

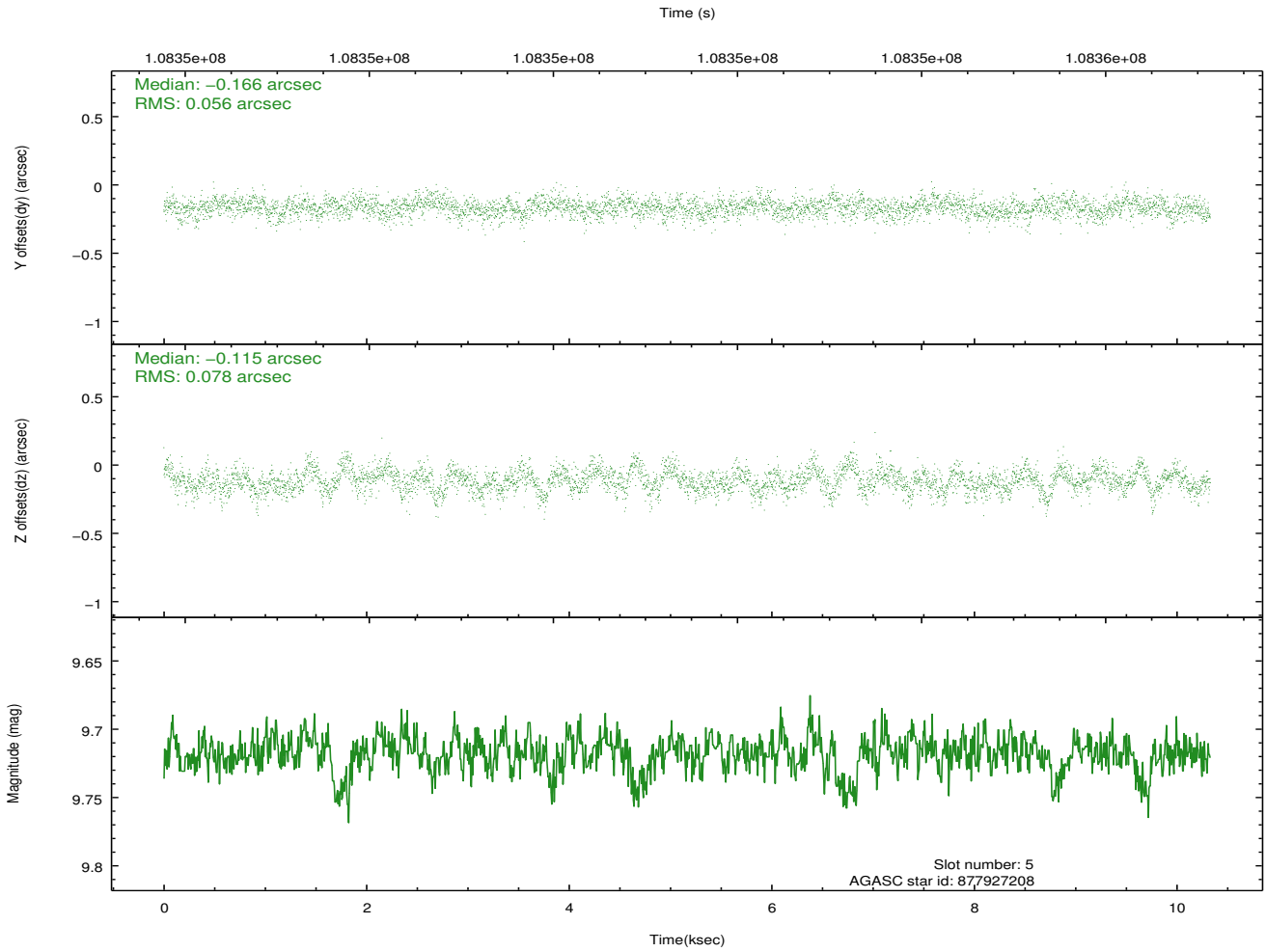
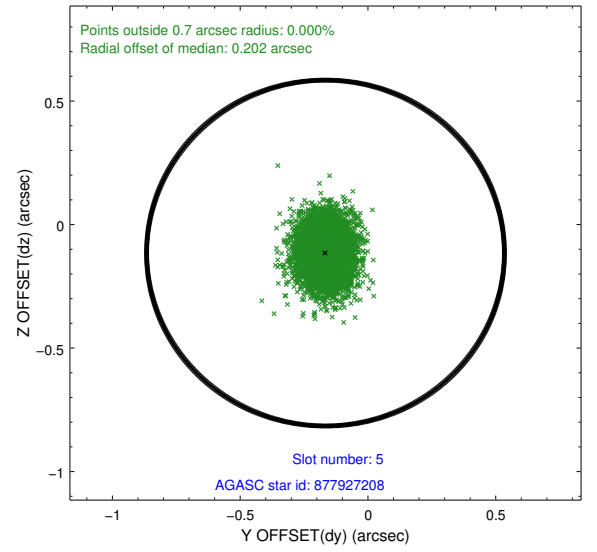
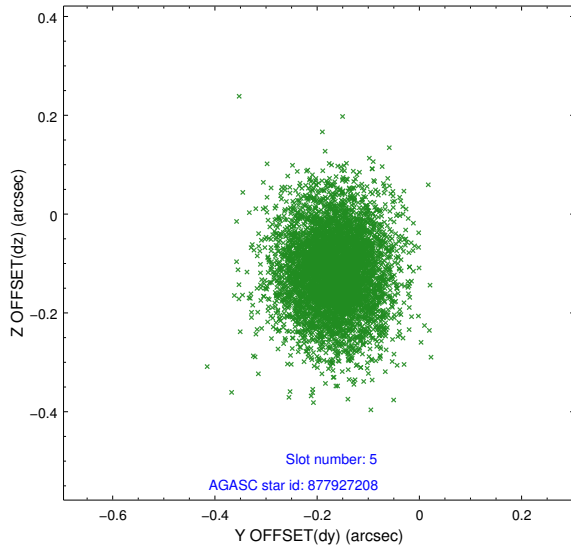
2.4.1 Slot 3



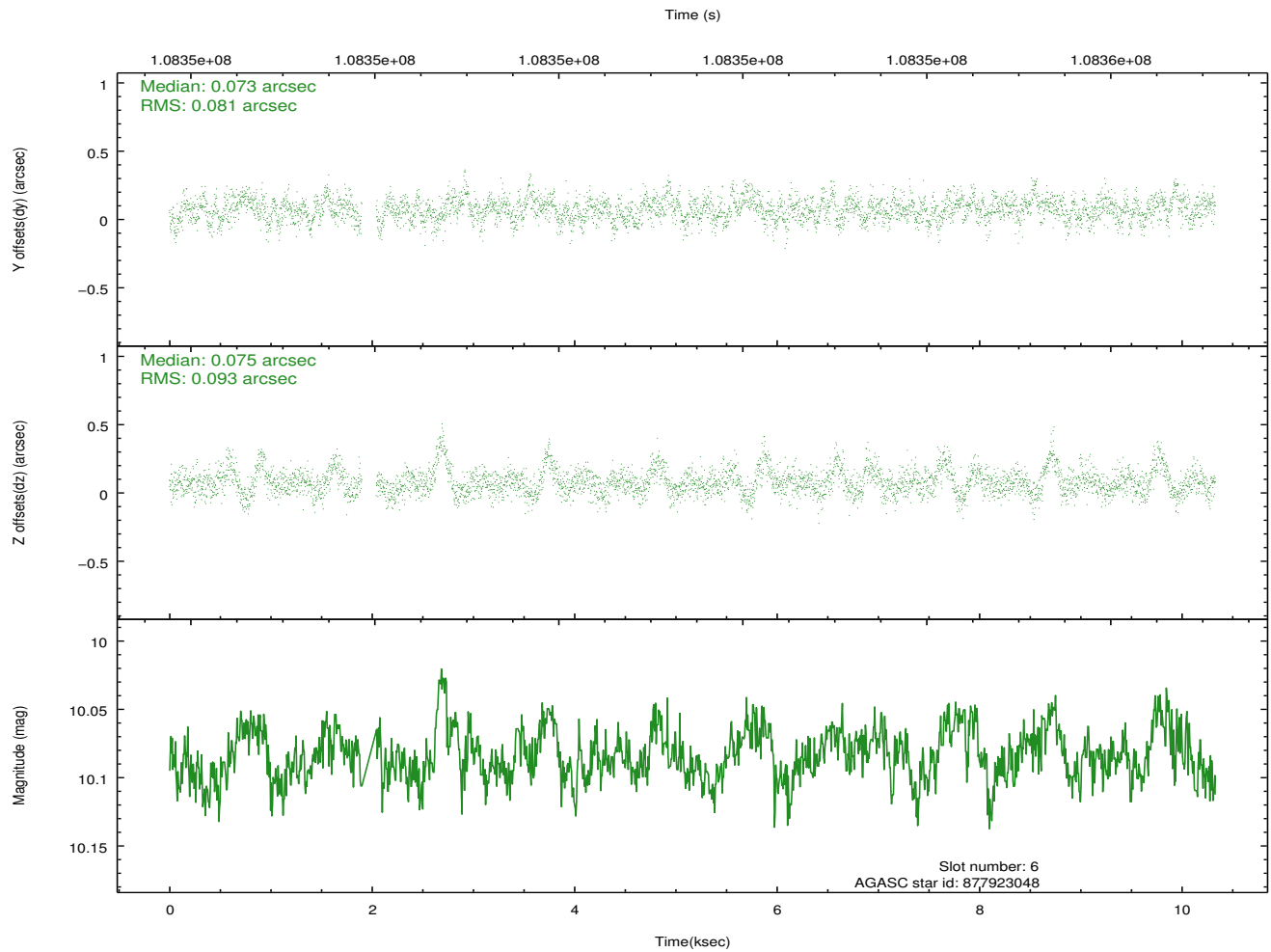
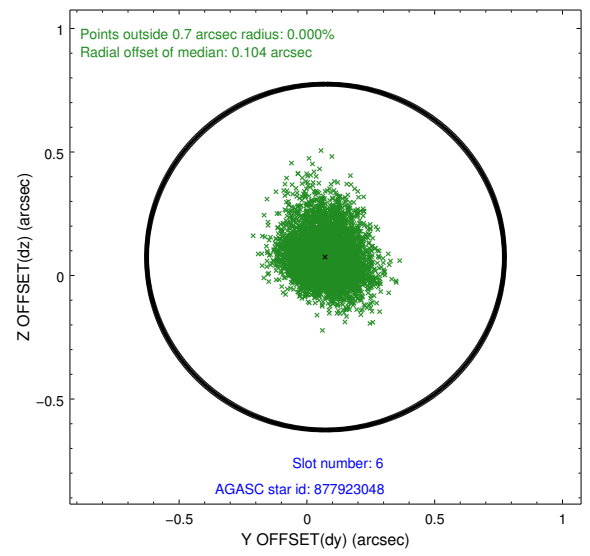
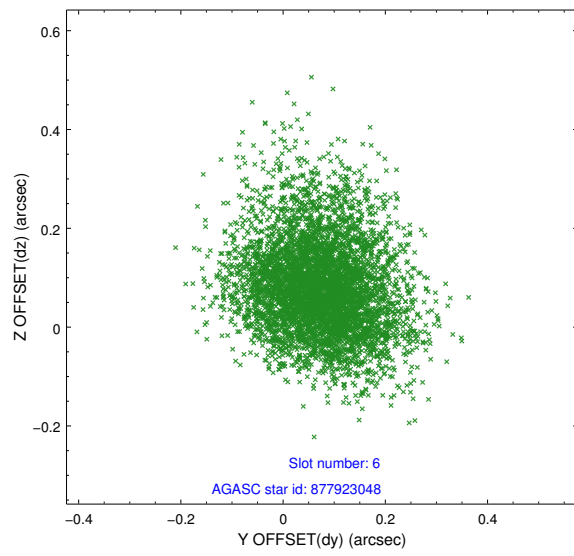
2.4.2 Slot 4



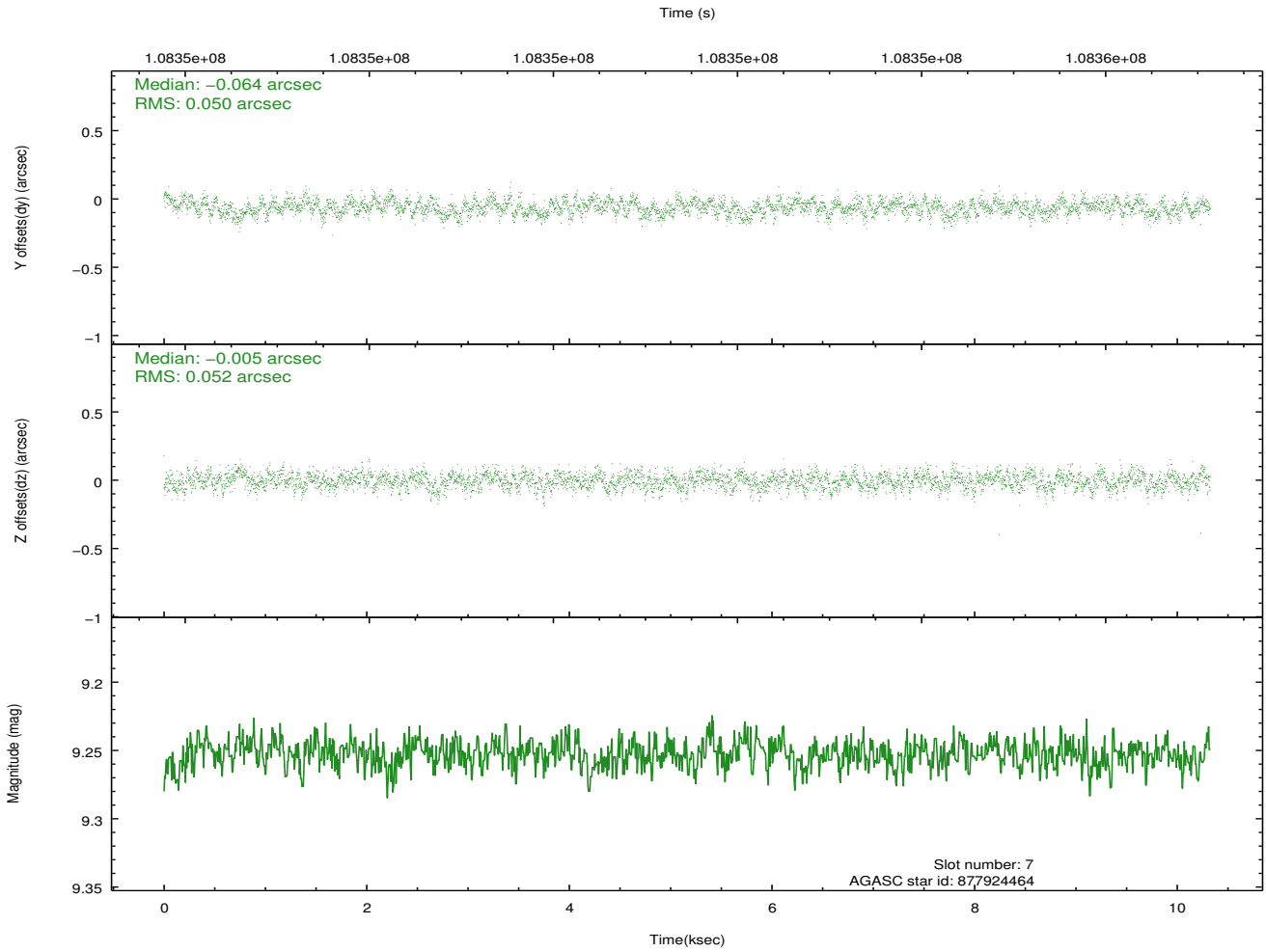
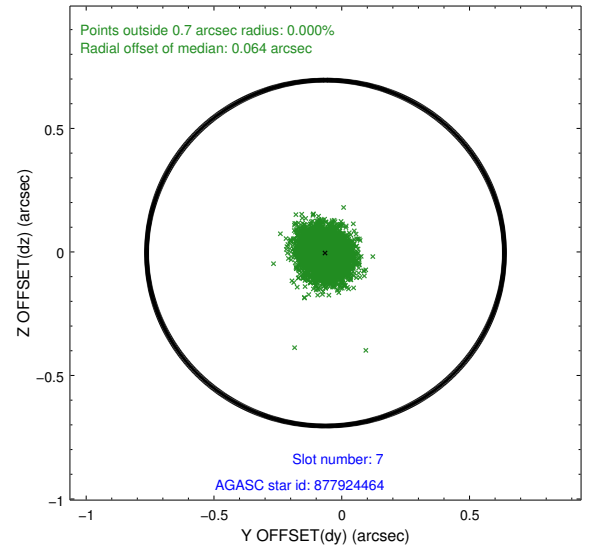
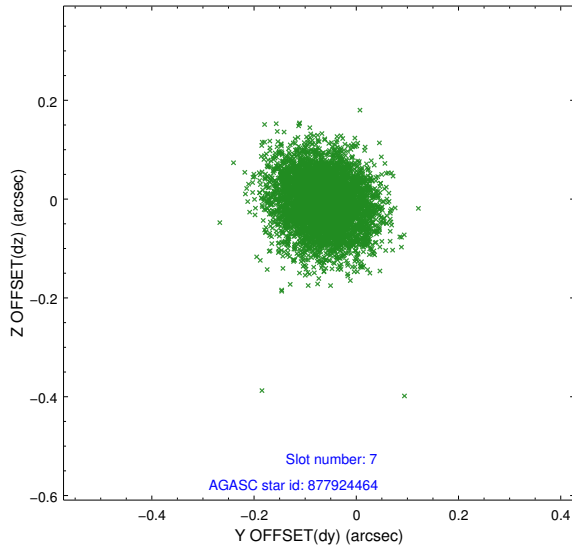
2.4.3 Slot 5



2.4.4 Slot 6

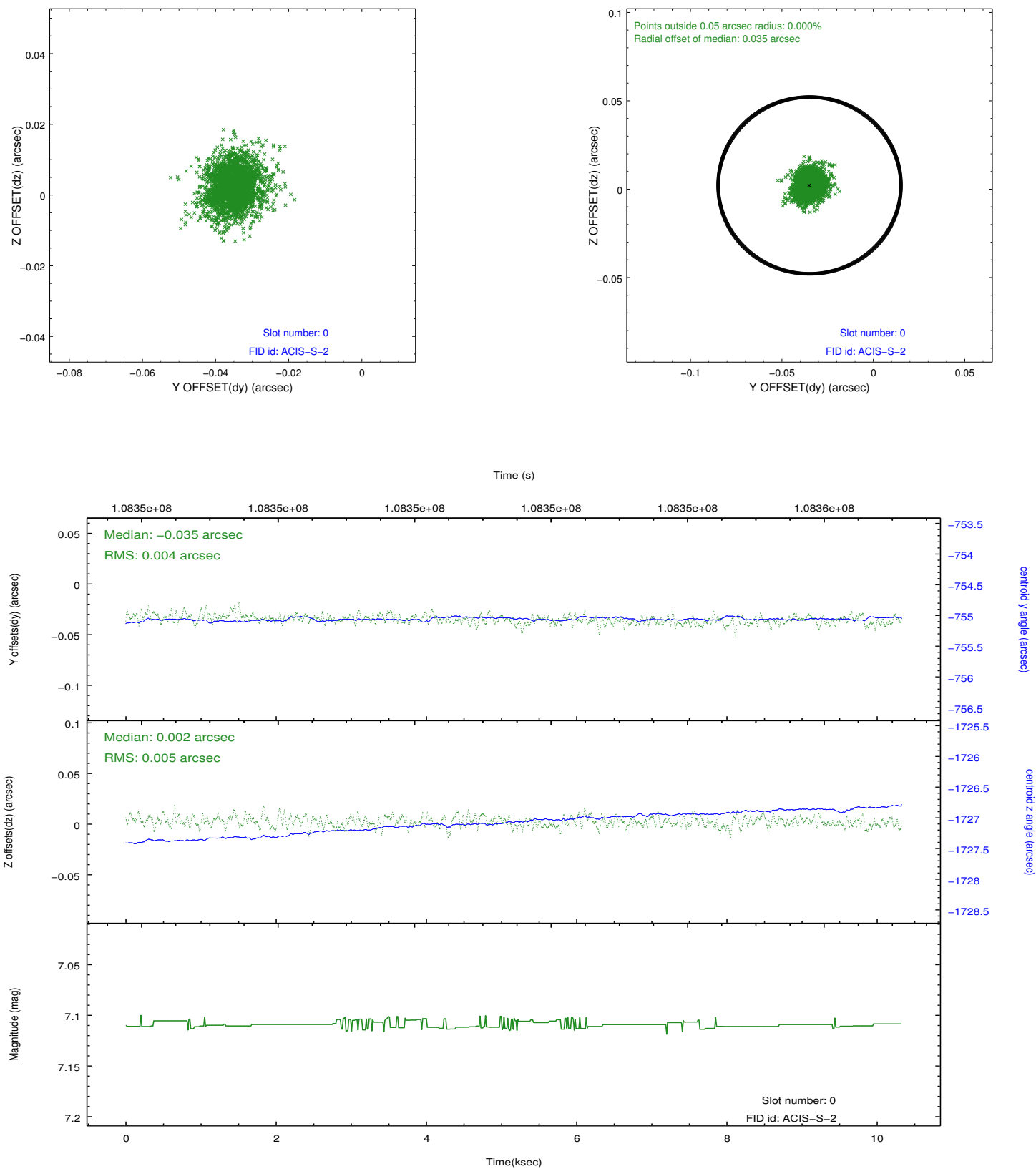


2.4.5 Slot 7

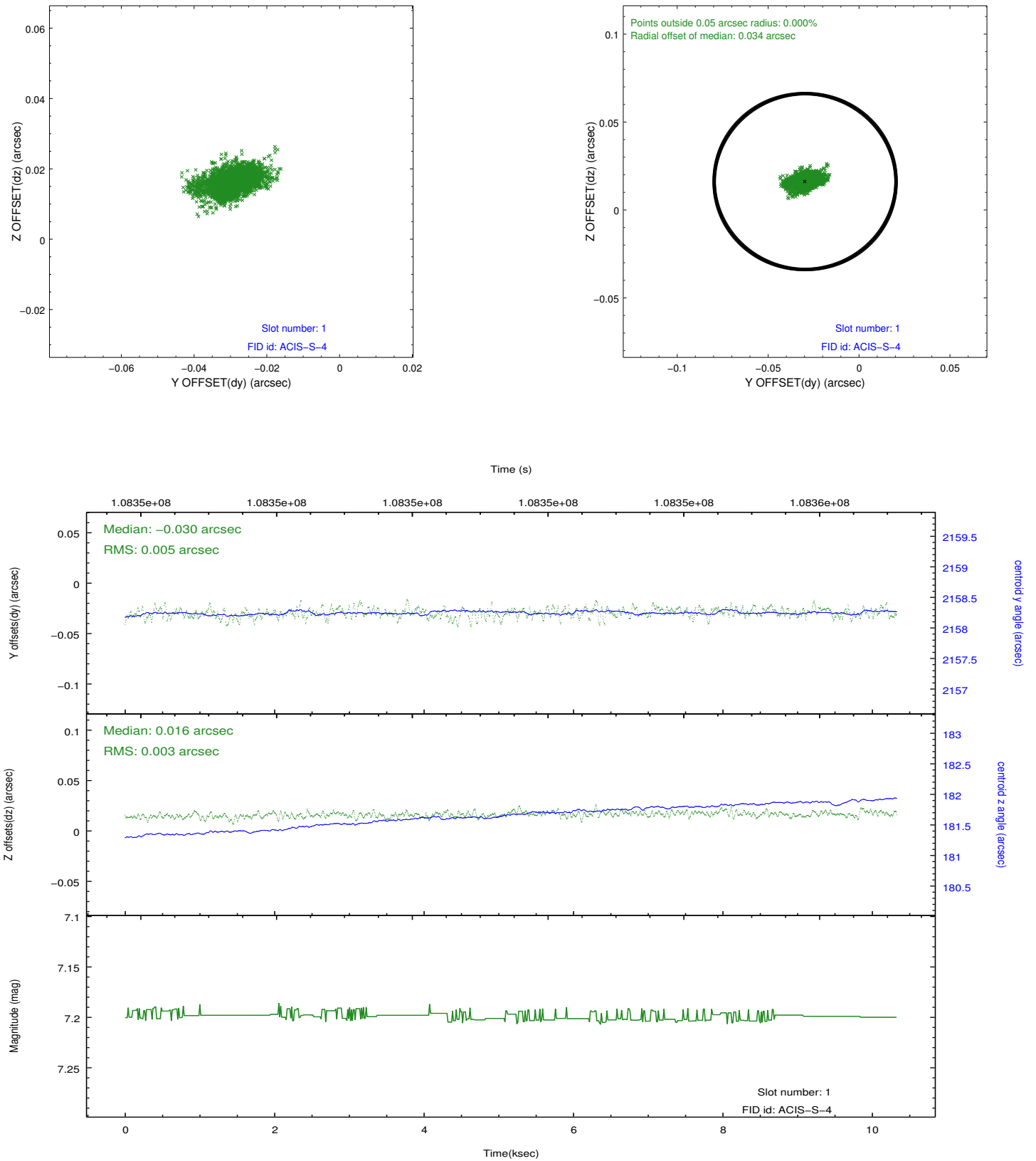


2.5 FID Slots

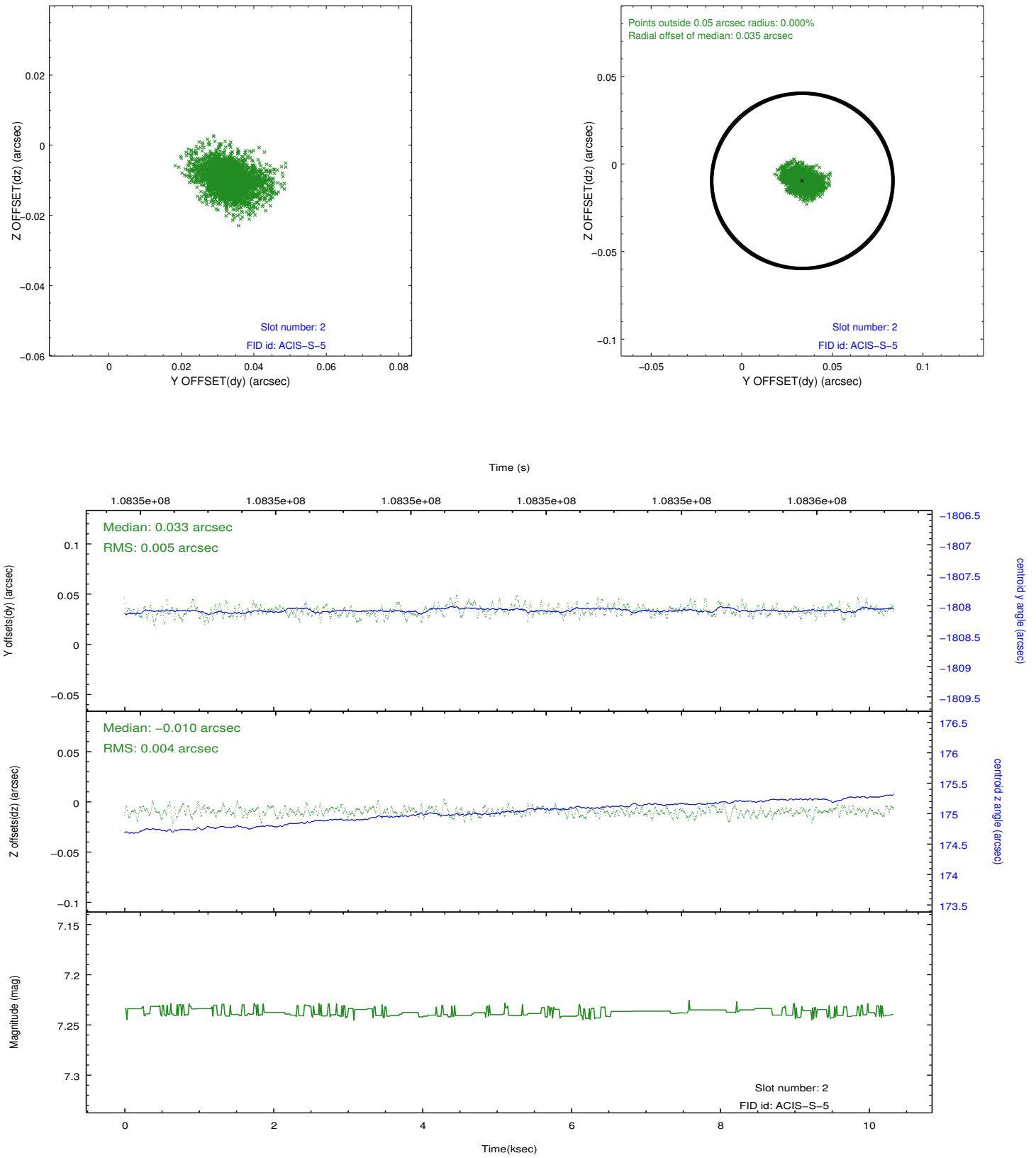
2.5.1 Slot 0



2.5.2 Slot 1



2.5.3 Slot 2



A Summary

A.1 Status

V&V Scientist	Jen Lauer
V&V Date (YYYY-MM-DD)	2012.09.20
V&V Edition	1
V&V Disposition and Status	OK
V&V Charge Time	9.9

A.2 Comments