

# V&V Reference Report

## L2 ASCDS Version : 7.6.9

Observation 1648 - L2 Version 001  
Chandra X-Ray Center

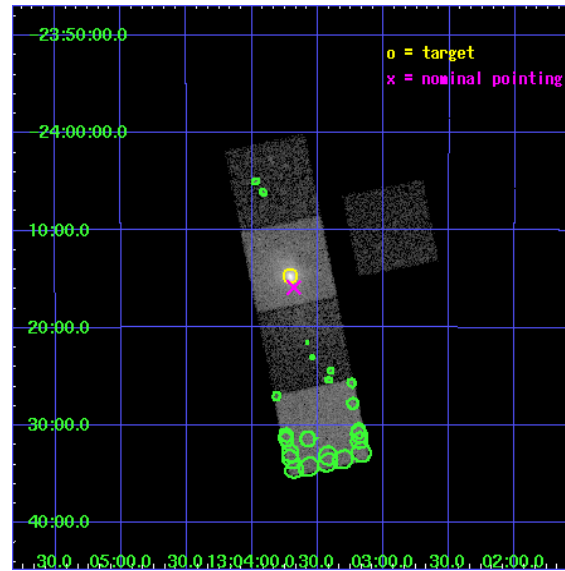
L2 Processing Date : Nov 28 2006

## Contents

<b>1</b>	<b>Front</b>	<b>2</b>
<b>2</b>	<b>OBI</b>	<b>3</b>
2.1	OBI . . . . .	3
2.1.1	Images . . . . .	3
2.1.2	Bias . . . . .	3
2.1.3	Parameters . . . . .	4
2.1.4	Events . . . . .	4
2.2	Compared Parameters . . . . .	5
2.3	Aspect . . . . .	6
2.4	Star Slots . . . . .	9
2.4.1	Slot 3 . . . . .	9
2.4.2	Slot 4 . . . . .	10
2.4.3	Slot 5 . . . . .	11
2.4.4	Slot 6 . . . . .	12
2.4.5	Slot 7 . . . . .	13
2.5	FID Slots . . . . .	14
2.5.1	Slot 0 . . . . .	14
2.5.2	Slot 1 . . . . .	15
2.5.3	Slot 2 . . . . .	16
<b>3</b>	<b>Point Sources</b>	<b>17</b>
<b>A</b>	<b>Summary</b>	<b>18</b>
A.1	Status . . . . .	18
A.2	Comments . . . . .	18

# 1 Front

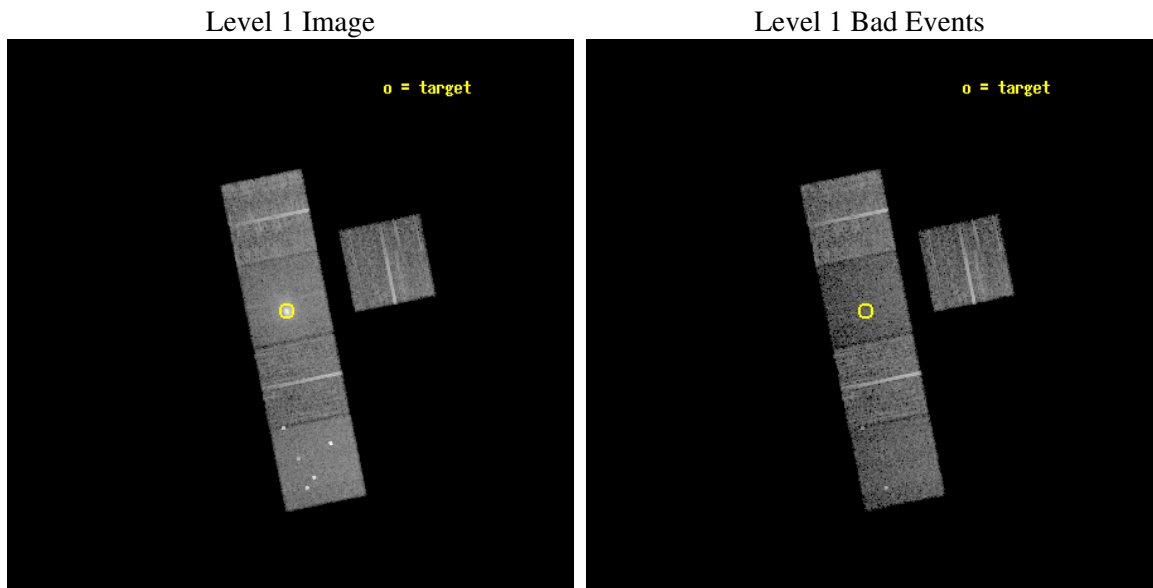
seq_num	800116
obs_id	1648
title	THE COOLING FLOW IN A1664
observer	Prof Andrew Fabian
object	A1664
dtcycle	0
cycle	P
ra_targ	195.927083
dec_targ	-24.244722
ra_nom	195.92062705952
dec_nom	-24.26478326134
roll_nom	258.47534566506
revision	2
ontime	9910.6999809444
livetime	9781.2093895422
ontime3	9910.6999809444
ontime5	9910.6999809444
ontime6	9910.6999809444
ontime7	9910.6999809444
ontime8	9901.2770104706
l2events	87699



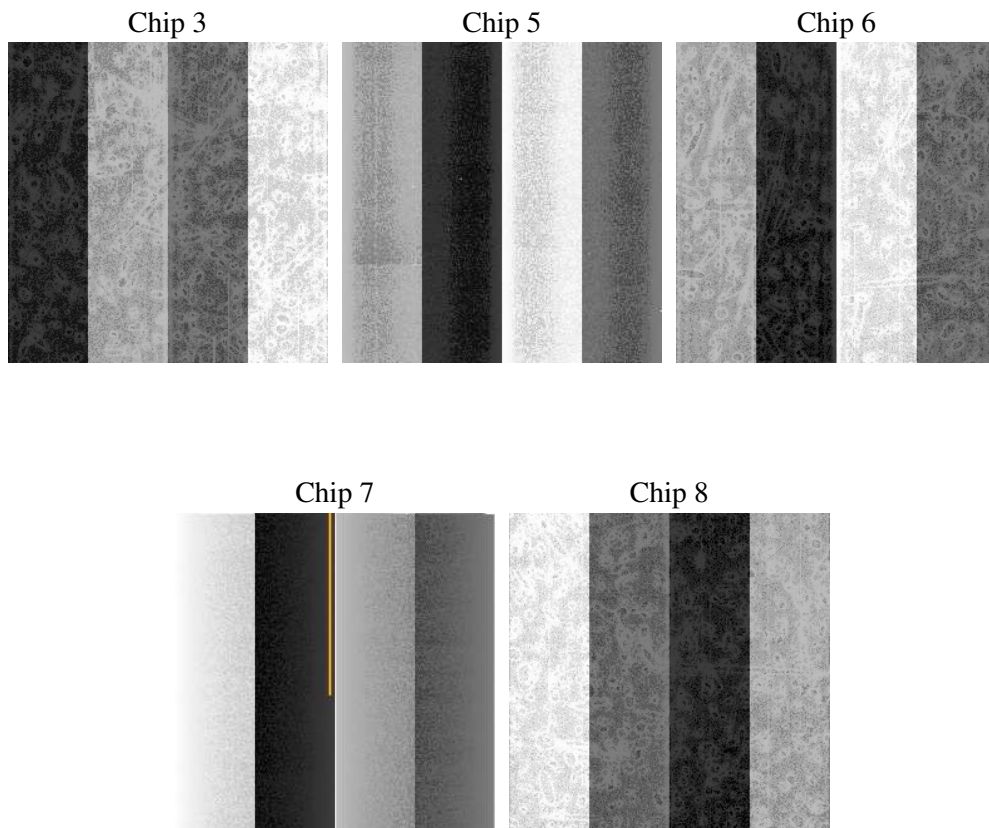
## 2 OBI

### 2.1 OBI

#### 2.1.1 Images



#### 2.1.2 Bias



### 2.1.3 Parameters

obi_num	0
ascdsver	7.6.9
caldbver	3.2.4
date	2006-11-28T03:34:20
revision	2

sched_exp_time	10140.000000
ontime	9916.1422760189
ontime3	9916.1422760189
ontime5	9916.1422760189
ontime6	9916.142256096
ontime7	9916.1422760189
ontime8	9906.7191859335
llevents	328846

### 2.1.4 Events

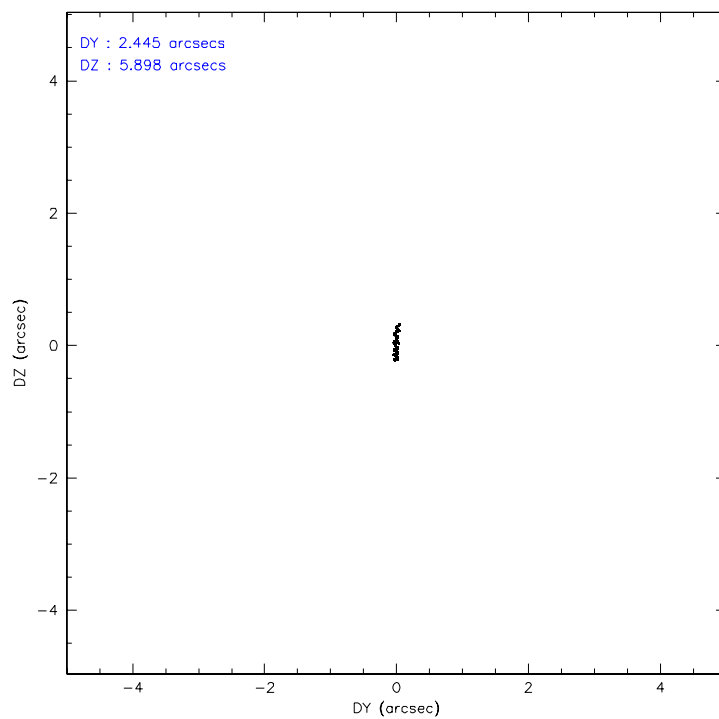
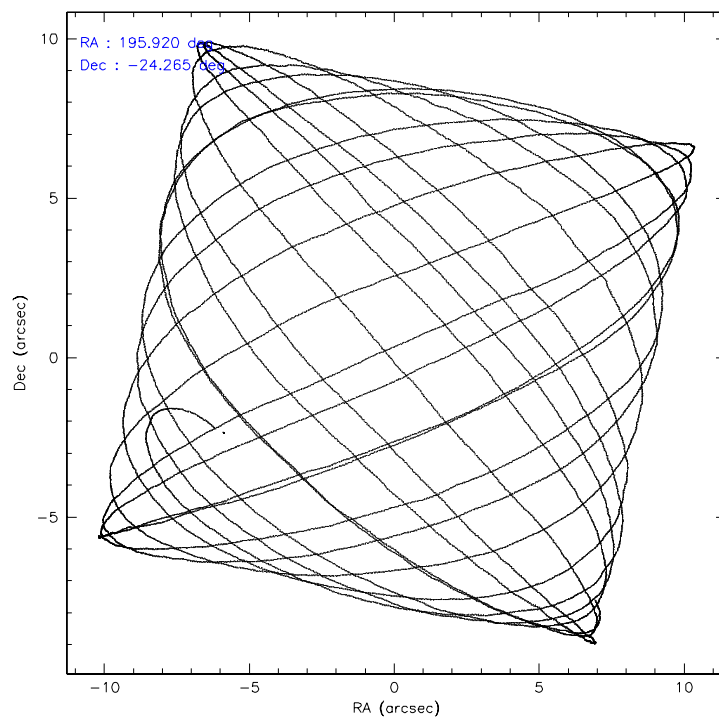
	ccd 3	ccd 5	ccd 6	ccd 7	ccd 8
level 1 events	52650	73336	57452	74196	71212
rejected events	47866	36324	49627	32620	56282
rejected %	90%	49%	86%	43%	79%

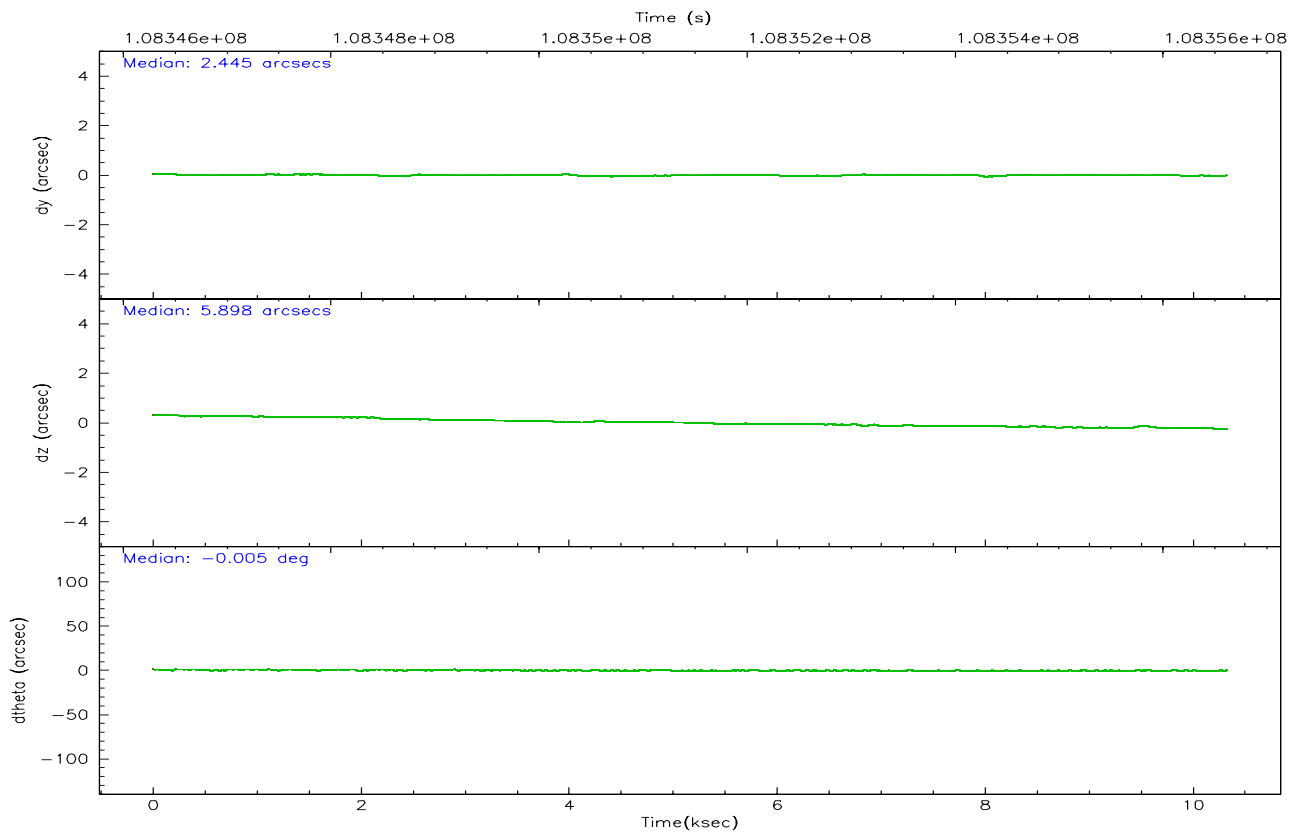
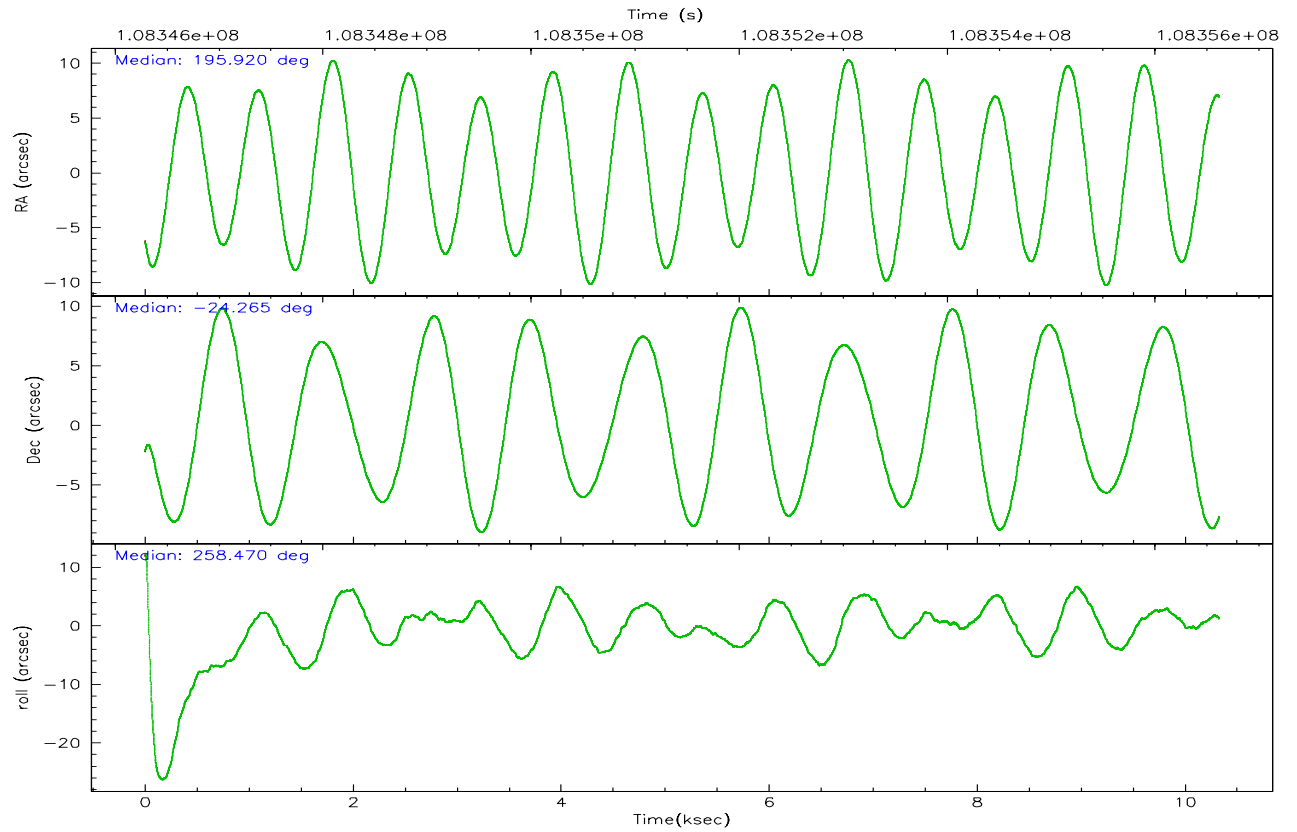
	ccd 3	ccd 5	ccd 6	ccd 7	ccd 8
grade 0 events	1704	6474	3852	6476	4666
	3%	8%	6%	8%	6%
grade 1 events	18	75	33	34	44
	0%	0%	0%	0%	0%
grade 2 events	1036	10337	1397	10906	3179
	1%	14%	2%	14%	4%
grade 3 events	533	983	682	3477	1673
	1%	1%	1%	4%	2%
grade 4 events	544	953	699	3324	1602
	1%	1%	1%	4%	2%
grade 5 events	1829	3822	2032	4399	2697
	3%	5%	3%	5%	3%
grade 6 events	967	18279	1196	17402	3812
	1%	24%	2%	23%	5%
grade 7 events	46019	32413	47561	28178	53539
	87%	44%	82%	37%	75%

## 2.2 Compared Parameters

Parameter	Planned	Actual	Parameter	Planned	Actual
Instrument	ACIS	ACIS	Obspar format version number	6	6
Detector	ACIS-35678	ACIS-35678	Obspar file type	PREDICTED	ACTUAL
Grating	NONE	NONE	Obspar update status	NONE	UPDATED
Data mode	VFAINT	VFAINT	Number of optional ACIS chips dropped	0	0
Observation mode	POINTING	POINTING	On-chip summing requested	N	N
Pointing RA	195.910850	195.9206270595205	Subarray requested	NONE	NONE
Pointing Dec	-24.238939	-24.26478326134047	Alternating exposures requested	N	N
Pointing Roll	258.314651	258.4753456650568	Primary exposure time	0.000000	3.1
SIM focus pos (mm)	-0.684267	-0.6828225247311905			
SIM defocus (mm)	0	0.001444936568705701			
SIM translation stage pos (mm)	-190.132523	-190.1400660498719			
SIM translation stage offset (mm)	0	0.00754346686406393			
Observation start time	108346475.184000	108345845.81668			
Observation start date	2001-06-08T00:13:31	2001-06-08T00:04:05			
Observation end time	108356615.184000	108357264.31712			
Observation end date	2001-06-08T03:02:31	2001-06-08T03:14:24			
Read mode	TIMED	TIMED			

## 2.3 Aspect





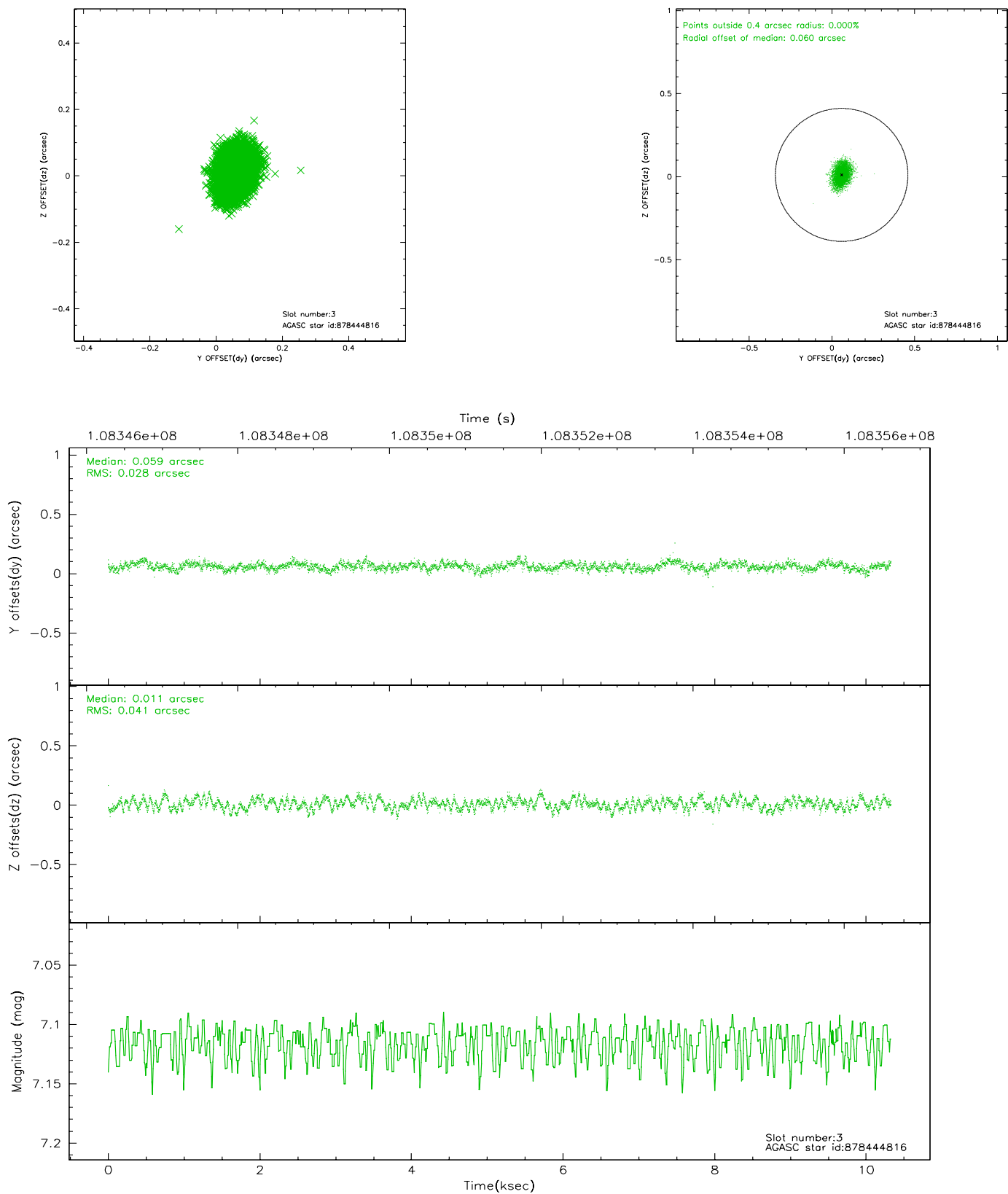
### Slot Statistics

slot	status	id	mag	n_pts	med_dy	med_dz	dr1	dr2	ra	dec	mean_y	mean_z
0	FID	ACIS-S-2	7.11	2520	-0.024	0.026	0.007	0.012	0.000000	0.000000	-755.05	-1727.04
1	FID	ACIS-S-4	7.20	2520	-0.072	0.005	0.005	0.009	0.000000	0.000000	2157.90	180.97
2	FID	ACIS-S-5	7.24	2520	0.064	-0.021	0.006	0.010	0.000000	0.000000	-1807.19	175.10
3	GUIDE	878444816	7.11	5040	0.059	0.011	0.053	0.086	195.982981	-24.517217	932.51	435.38
4	GUIDE	877923704	8.27	5039	0.100	0.028	0.059	0.093	195.777573	-24.149712	-226.07	-492.57
5	GUIDE	877927208	9.72	5031	-0.166	-0.115	0.101	0.171	195.391934	-23.484537	-2310.25	-2226.81
6	GUIDE	877923048	10.08	4966	0.073	0.075	0.128	0.218	195.872266	-23.940618	-1027.07	-341.23
7	GUIDE	877924464	9.25	5038	-0.064	-0.005	0.077	0.123	196.557235	-24.291020	-242.36	2116.93

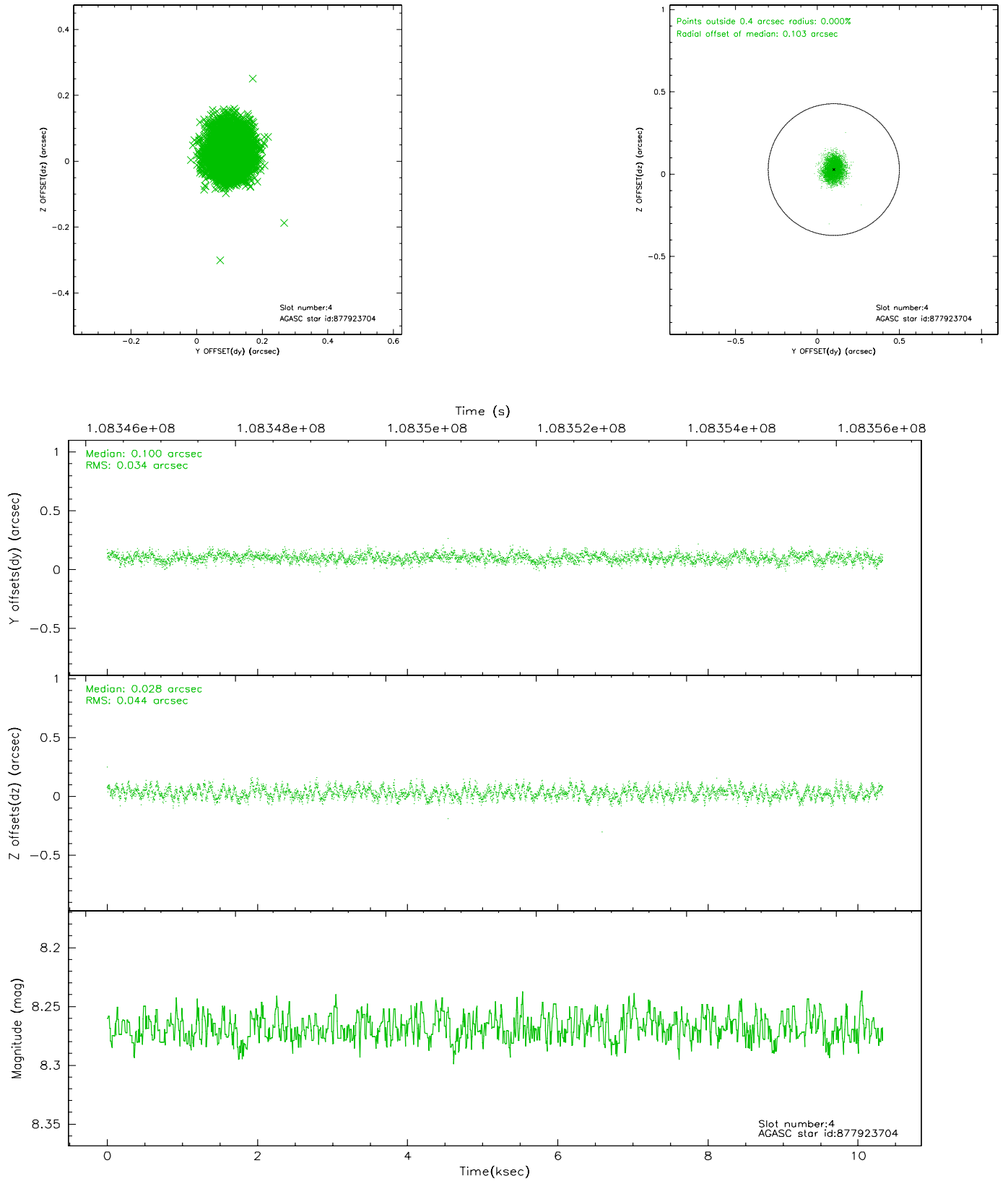


## 2.4 Star Slots

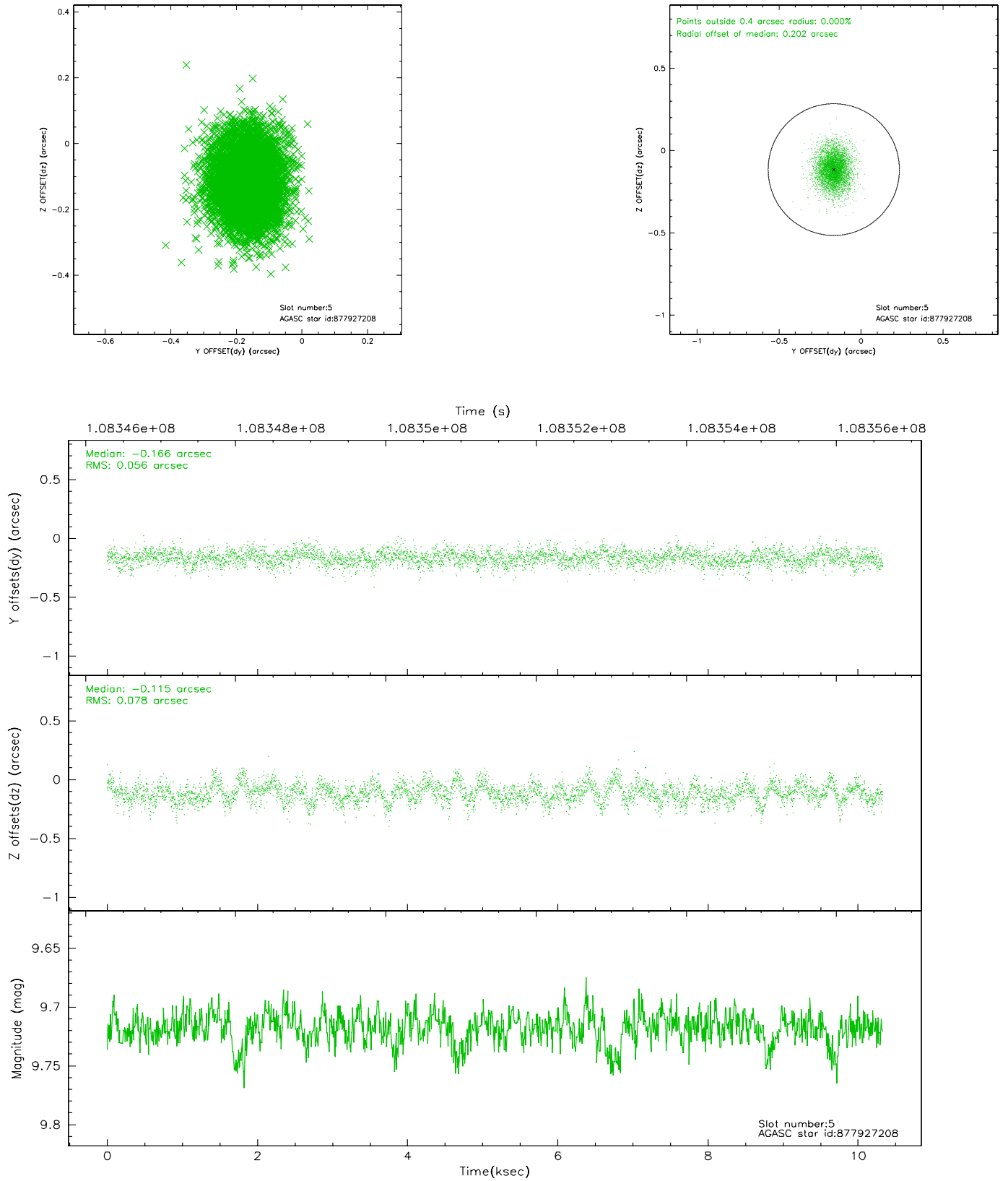
### 2.4.1 Slot 3



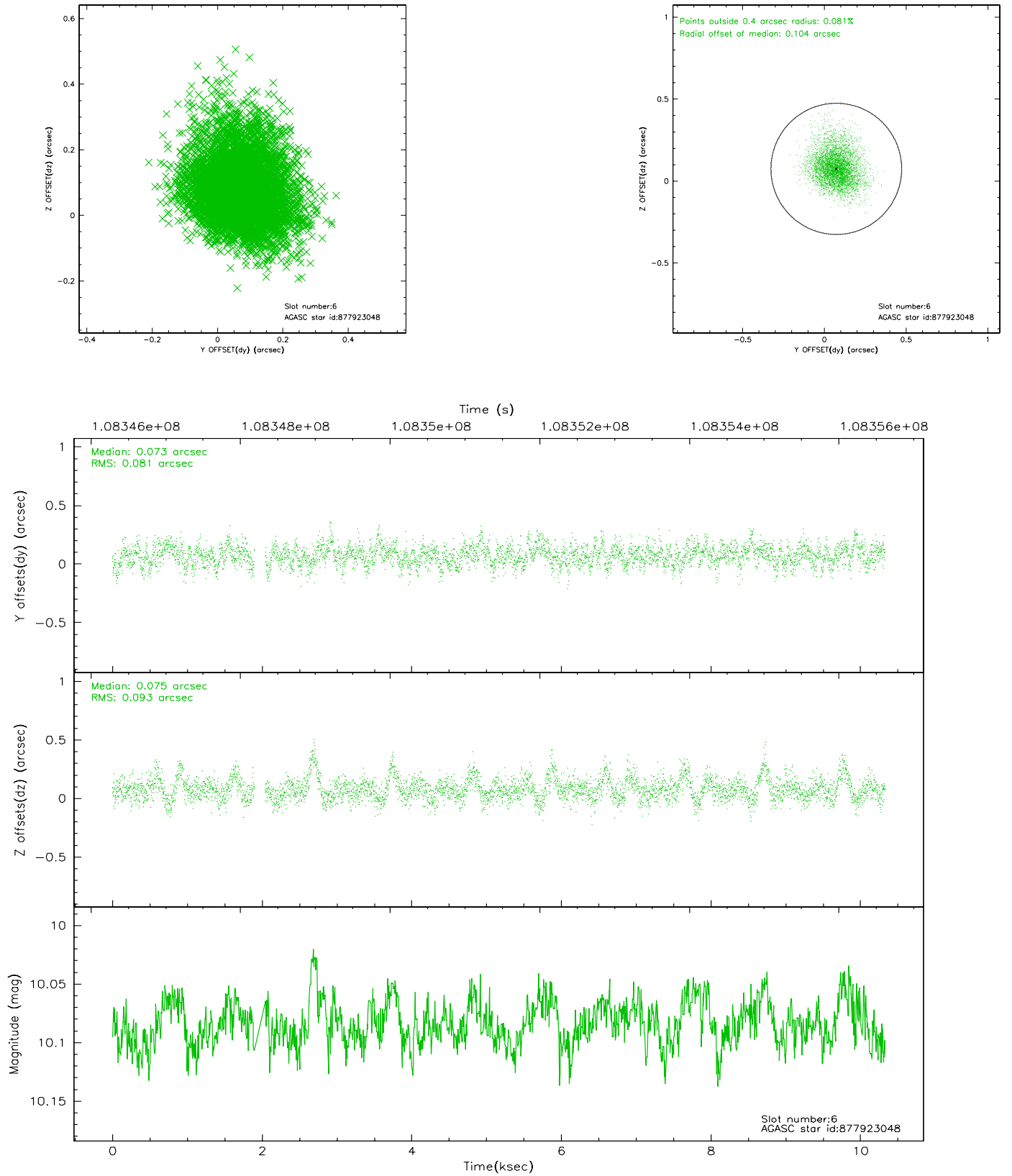
## 2.4.2 Slot 4



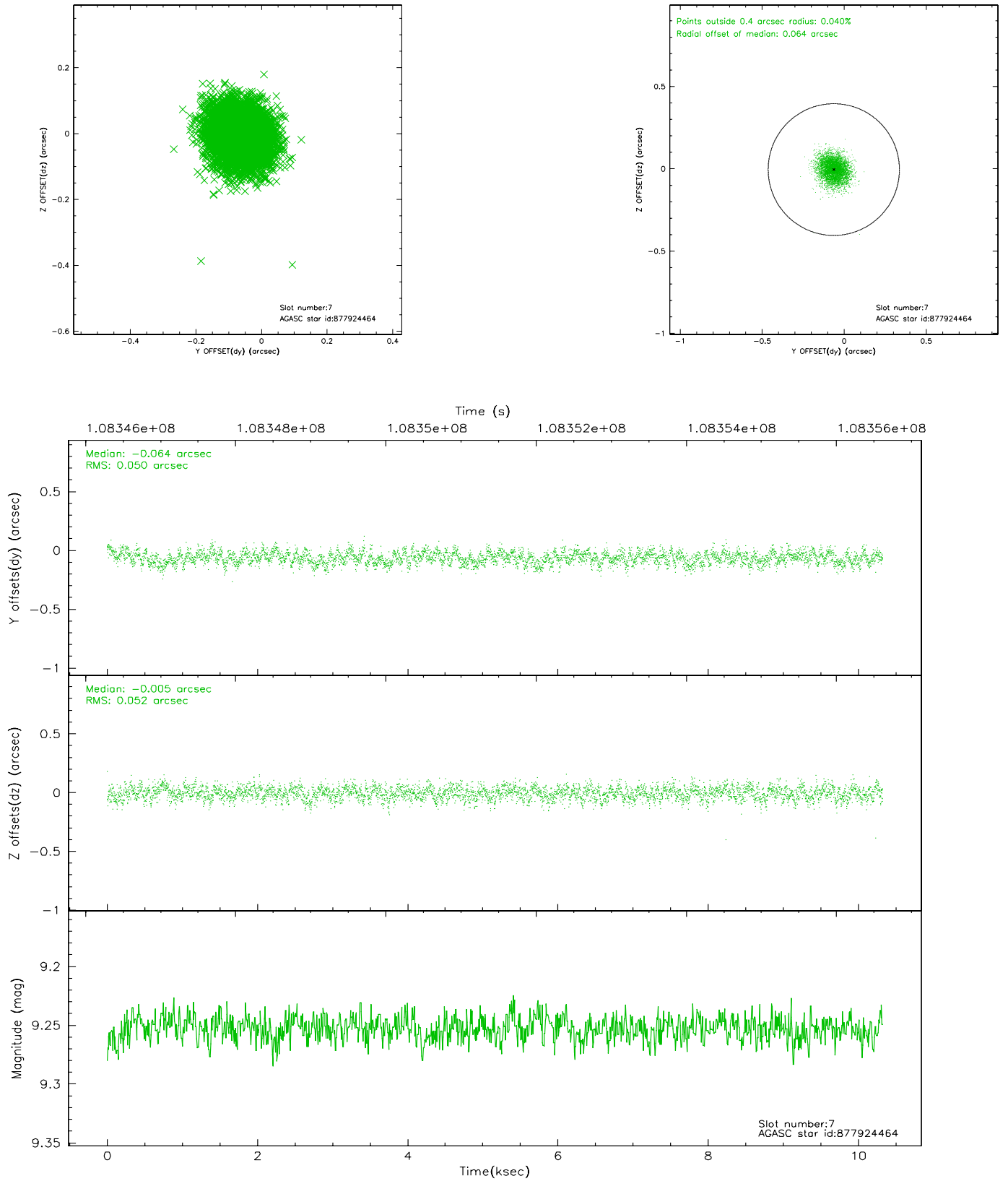
### 2.4.3 Slot 5



## 2.4.4 Slot 6

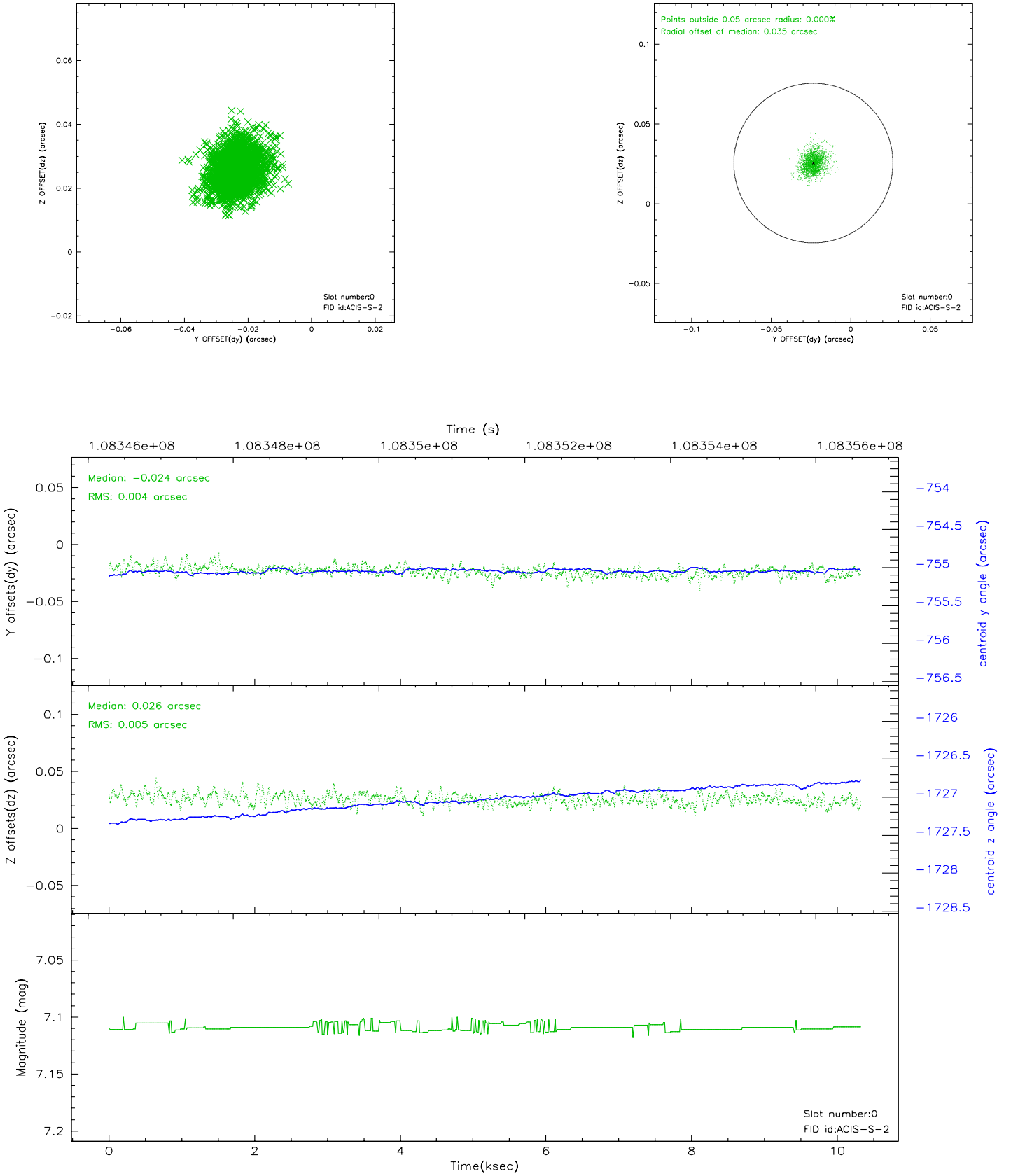


## 2.4.5 Slot 7

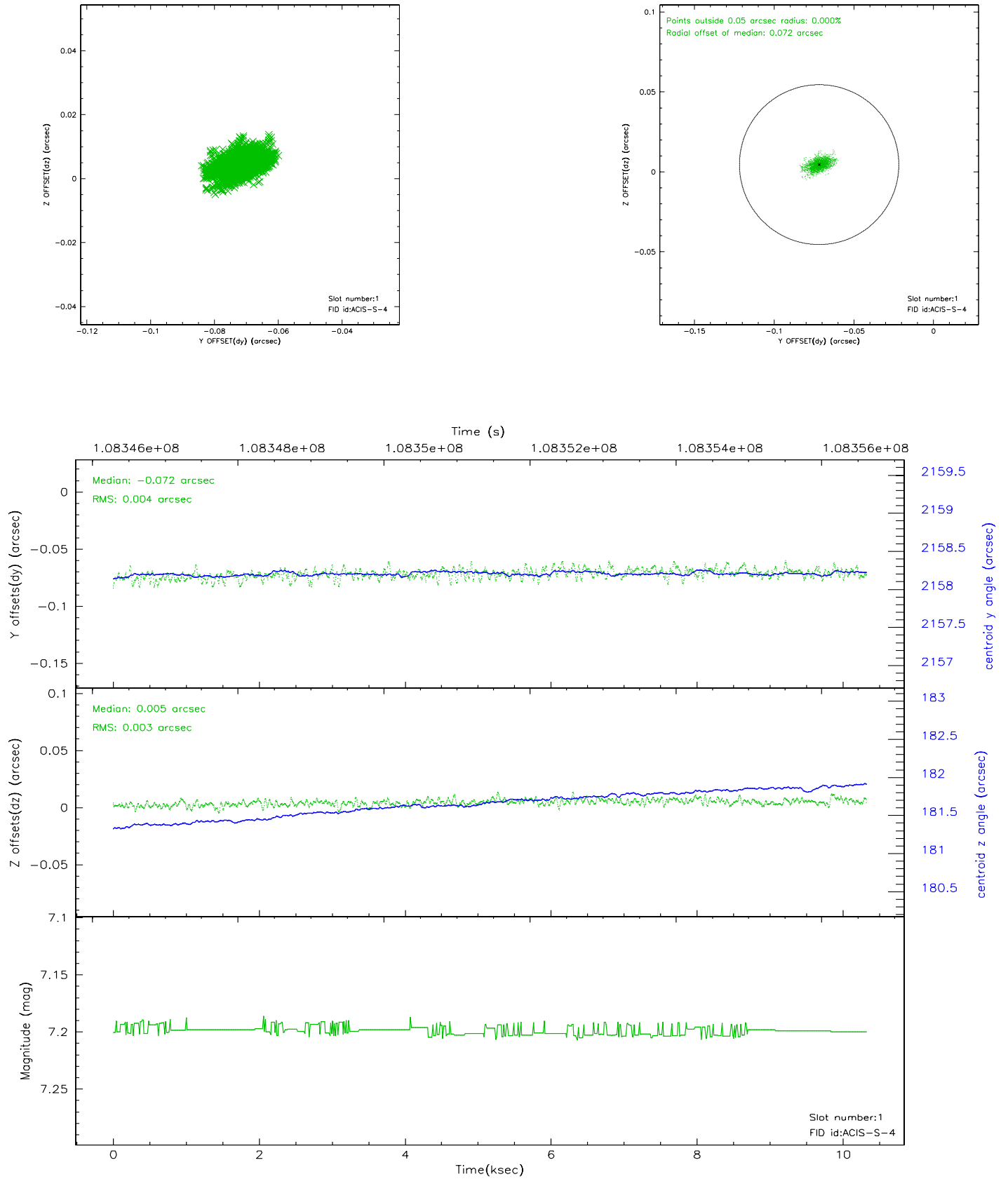


## 2.5 FID Slots

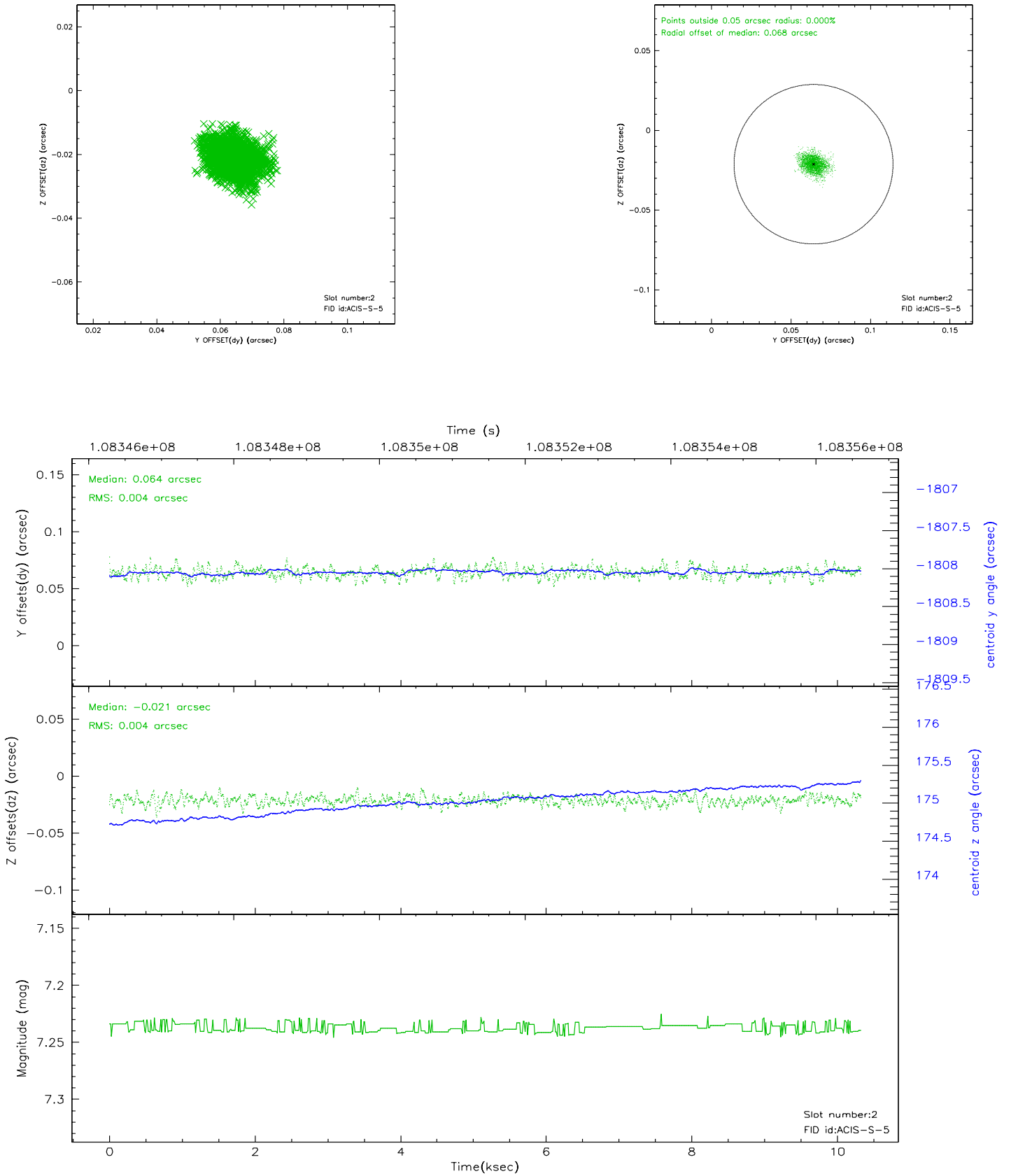
### 2.5.1 Slot 0



## 2.5.2 Slot 1

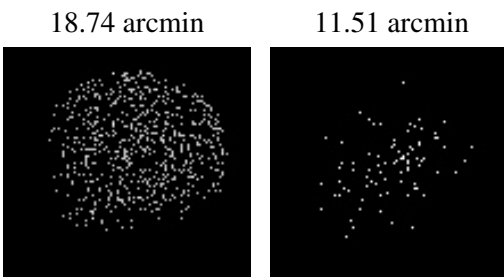


### 2.5.3 Slot 2





### 3 Point Sources



## A Summary

### A.1 Status

V&V Scientist	Jen Lauer
V&V Date (YYYY-MM-DD)	2006.11.28
V&V Edition	1
V&V Disposition and Status	OK
V&V Charge Time	9.9

### A.2 Comments