

# V&V Reference Report

## L2 ASCDS Version : 7.6.10

Observation 2183 - L2 Version 001  
Chandra X-Ray Center

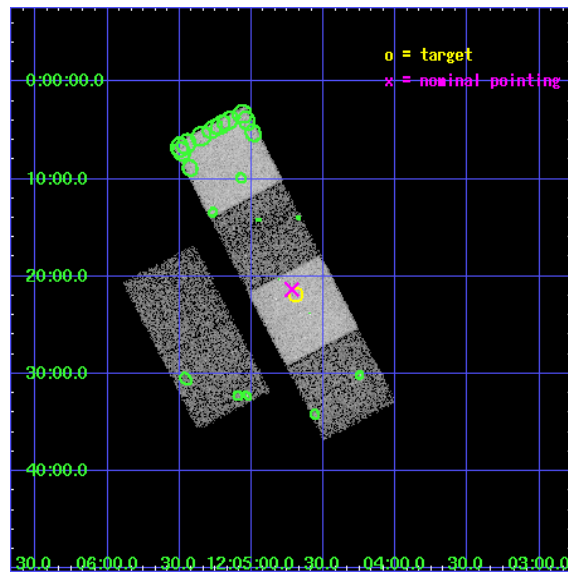
L2 Processing Date : Jun 18 2007

## Contents

<b>1</b>	<b>Front</b>	<b>2</b>
<b>2</b>	<b>OBI</b>	<b>3</b>
2.1	OBI . . . . .	3
2.1.1	Images . . . . .	3
2.1.2	Bias . . . . .	3
2.1.3	Parameters . . . . .	4
2.1.4	Events . . . . .	4
2.2	Compared Parameters . . . . .	5
2.3	Aspect . . . . .	6
2.4	Star Slots . . . . .	9
2.4.1	Slot 3 . . . . .	9
2.4.2	Slot 4 . . . . .	10
2.4.3	Slot 5 . . . . .	11
2.4.4	Slot 6 . . . . .	12
2.4.5	Slot 7 . . . . .	13
2.5	FID Slots . . . . .	14
2.5.1	Slot 0 . . . . .	14
2.5.2	Slot 1 . . . . .	15
2.5.3	Slot 2 . . . . .	16
<b>3</b>	<b>Point Sources</b>	<b>17</b>
<b>A</b>	<b>Summary</b>	<b>18</b>
A.1	Status . . . . .	18
A.2	Comments . . . . .	18

# 1 Front

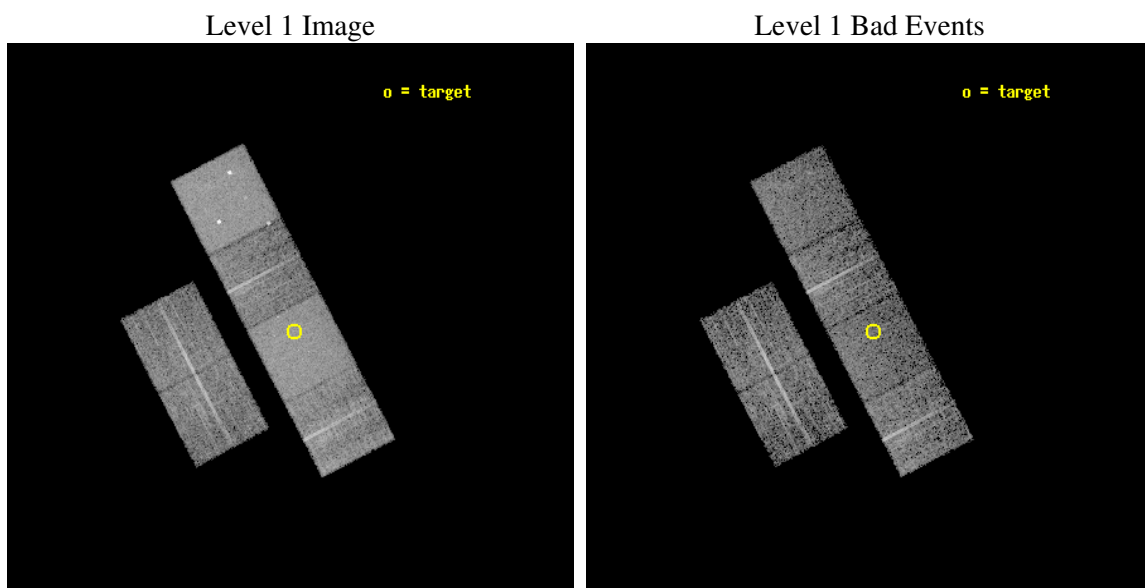
seq_num	700373
obs_id	2183
title	SURVEY OF RADIO QUIET Z>4 QUASARS
observer	Dr. Jill Bechtold
object	SDSS1204-0021
dtcycle	0
cycle	P
ra_targ	181.17375
dec_targ	-0.363611
ra_nom	181.17978777647
dec_nom	-0.35584478388982
roll_nom	62.472782590013
revision	2
ontime	6352.0000059158
livedtime	6271.5671571256
ontime2	6352.0000059158
ontime3	6352.0000059158
ontime5	6352.0000059158
ontime6	6352.0000059158
ontime7	6352.0000059158
ontime8	6352.0000059158
l2events	95494



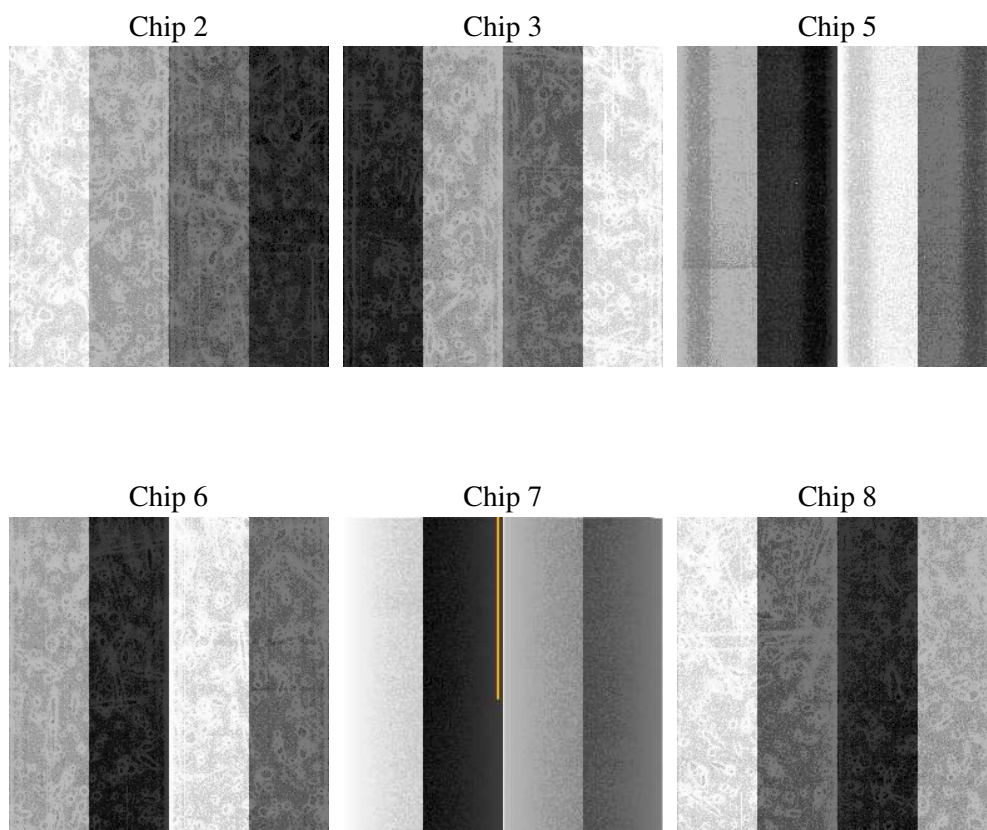
## 2 OBI

### 2.1 OBI

#### 2.1.1 Images



#### 2.1.2 Bias



### 2.1.3 Parameters

obi_num	1
ascdsver	7.6.10
caldsver	3.4.0
date	2007-06-18T10:41:55
revision	2

sched_exp_time	6200.000000
ontime	6352.0000059158
ontime2	6352.0000059158
ontime3	6352.0000059158
ontime5	6352.0000059158
ontime6	6352.0000059158
ontime7	6352.0000059158
ontime8	6352.0000059158
l1events	300036

### 2.1.4 Events

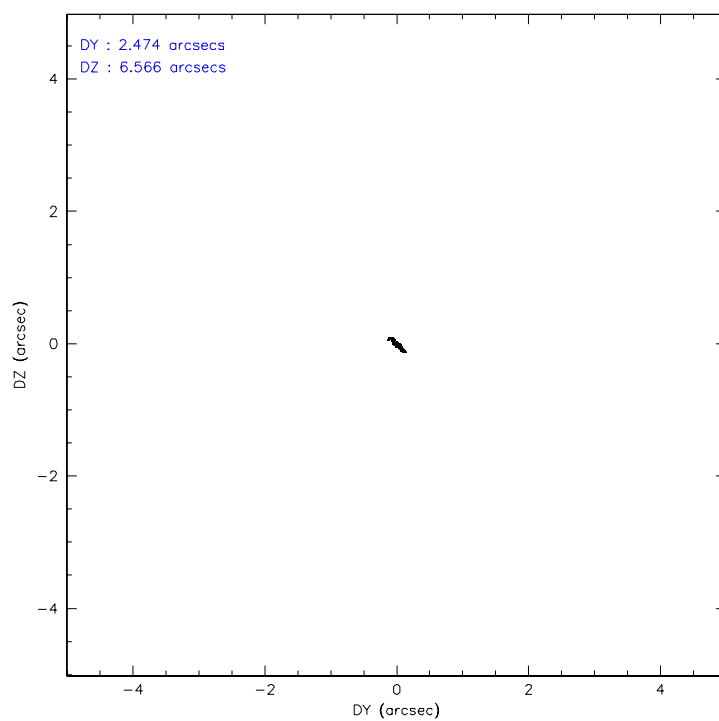
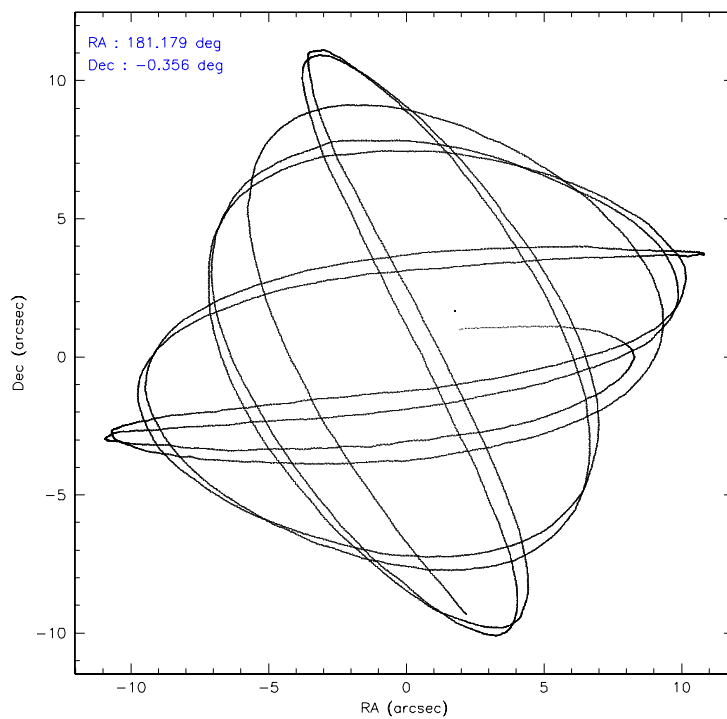
	ccd 2	ccd 3	ccd 5	ccd 6	ccd 7	ccd 8
level 1 events	39354	38612	68047	39956	61536	52531
rejected events	32616	31629	28908	32693	26838	36611
rejected %	82%	81%	42%	81%	43%	69%

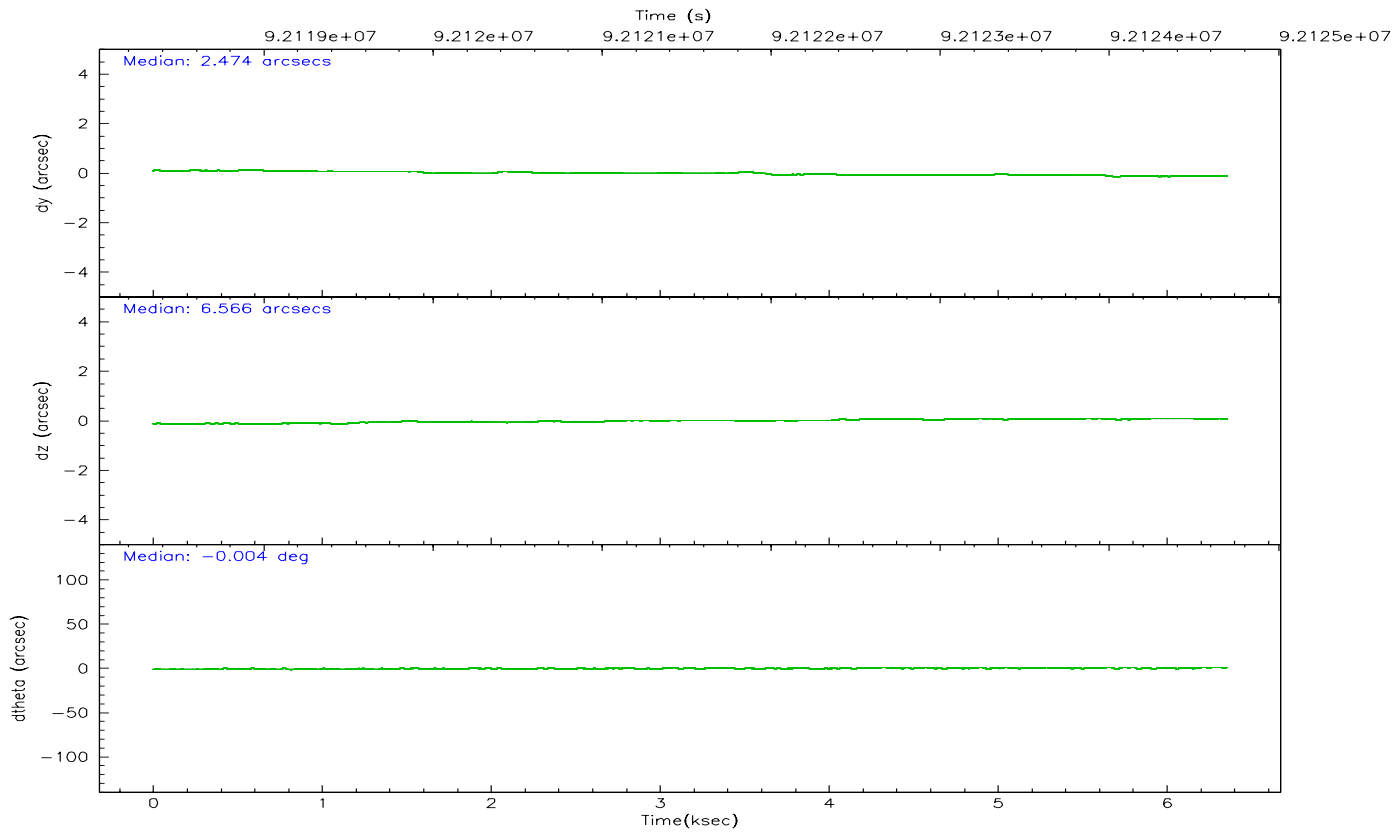
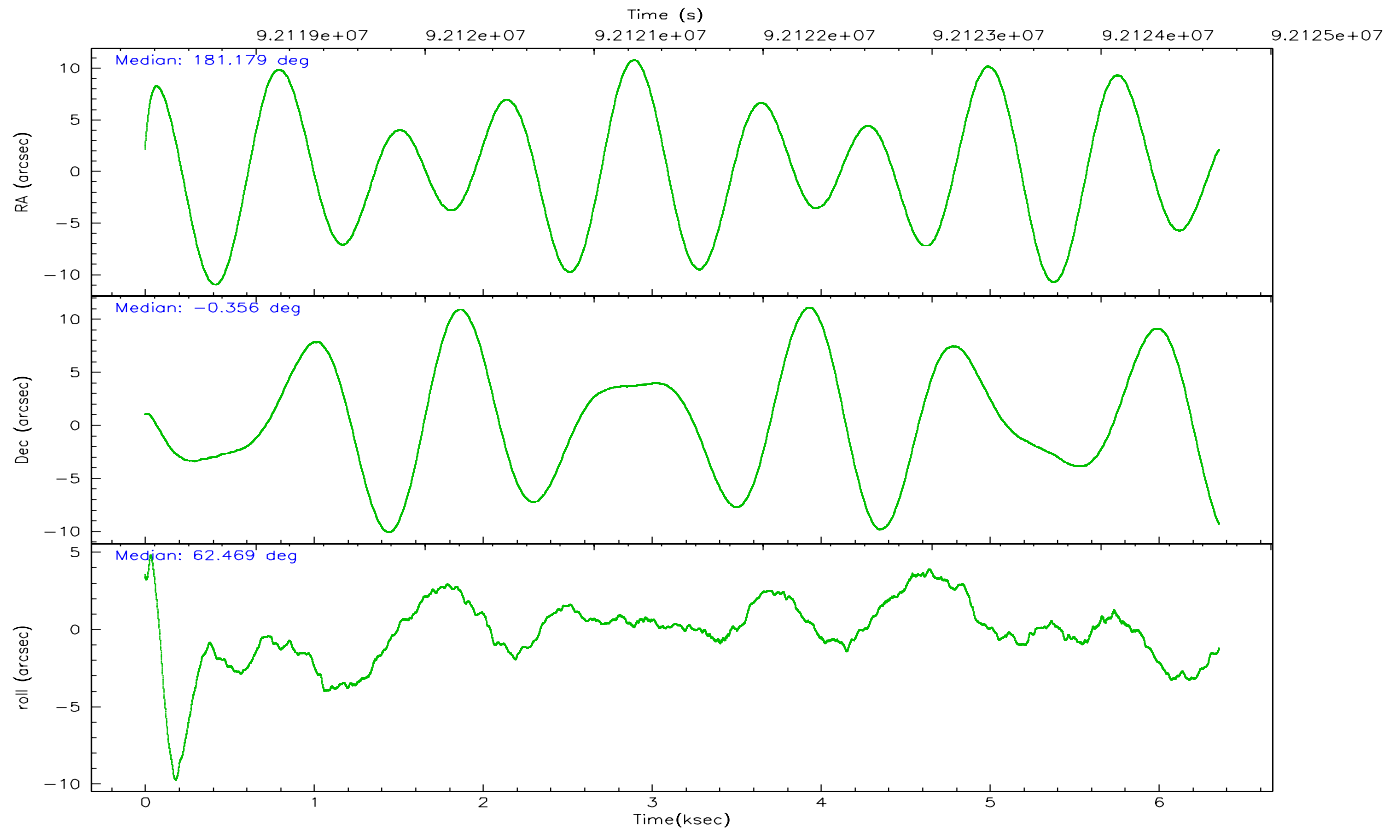
	ccd 2	ccd 3	ccd 5	ccd 6	ccd 7	ccd 8
grade 0 events	3736	3751	7786	3918	4566	6369
	9%	9%	11%	9%	7%	12%
grade 1 events	21	21	133	29	42	43
	0%	0%	0%	0%	0%	0%
grade 2 events	1235	1324	10866	1353	6939	2776
	3%	3%	15%	3%	11%	5%
grade 3 events	458	528	2150	506	3043	1975
	1%	1%	3%	1%	4%	3%
grade 4 events	458	508	1988	517	2993	1801
	1%	1%	2%	1%	4%	3%
grade 5 events	1266	1366	4014	1511	4518	1831
	3%	3%	5%	3%	7%	3%
grade 6 events	945	952	16875	1084	17619	3265
	2%	2%	24%	2%	28%	6%
grade 7 events	31235	30162	24235	31038	21816	34471
	79%	78%	35%	77%	35%	65%

## 2.2 Compared Parameters

Parameter	Planned	Actual	Parameter	Planned	Actual
Instrument	ACIS	ACIS	Obspar format version number	6	6
Detector	ACIS-235678	ACIS-235678	Obspar file type	PREDICTED	ACTUAL
Grating	NONE	NONE	Obspar update status	NONE	UPDATED
Data mode	FAINT	FAINT	Number of optional ACIS chips dropped	0	0
Observation mode	POINTING	POINTING	On-chip summing requested	N	N
Pointing RA	181.181200	181.1797877764686	Subarray requested	NONE	NONE
Pointing Dec	-0.383134	-0.355844783889822	Alternating exposures requested	N	N
Pointing Roll	62.316174	62.47278259001265	Primary exposure time	0.000000	3.2
SIM focus pos (mm)	-0.684267	-0.6828225247311905			
SIM defocus (mm)	0	0.001444936568705701			
SIM translation stage pos (mm)	-190.132523	-190.1400660498719			
SIM translation stage offset (mm)	0	0.00754346686406393			
Observation start time	92118499.184000	92117398.92772201			
Observation start date	2000-12-02T04:27:15	2000-12-02T04:09:58			
Observation end time	92124699.184000	92125136.653017			
Observation end date	2000-12-02T06:10:35	2000-12-02T06:18:56			
Read mode	TIMED	TIMED			

## 2.3 Aspect





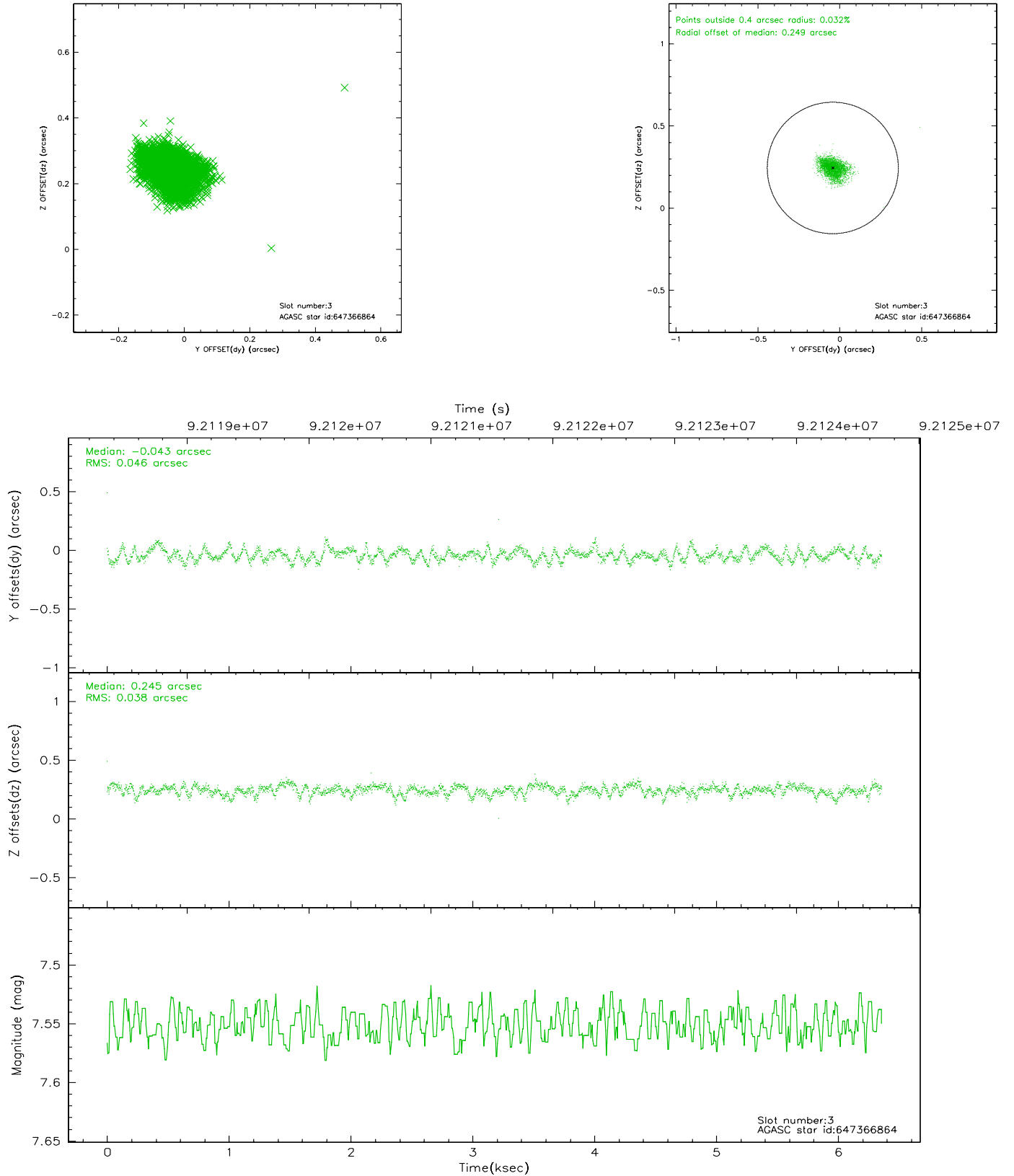
### Slot Statistics

slot	status	id	mag	n_pts	med_dy	med_dz	dr1	dr2	ra	dec	mean_y	mean_z
0	FID	ACIS-S-2	7.11	1551	-0.018	0.023	0.007	0.012	0.000000	0.000000	-755.11	-1727.69
1	FID	ACIS-S-4	7.21	1551	-0.061	0.003	0.005	0.008	0.000000	0.000000	2157.70	179.83
2	FID	ACIS-S-5	7.23	1551	0.048	-0.017	0.007	0.012	0.000000	0.000000	-1806.70	174.52
3	GUIDE	647366864	7.55	3103	-0.043	0.245	0.062	0.103	181.797637	-0.629953	245.69	-2378.35
4	GUIDE	647364768	9.16	3103	-0.006	0.046	0.072	0.117	181.595958	-0.108335	1571.36	-863.92
5	GUIDE	647366200	9.29	3103	0.279	0.046	0.086	0.137	181.366596	-0.971817	-1564.31	-1576.54
6	GUIDE	36704856	9.48	3100	-0.219	-0.109	0.091	0.148	181.165578	0.387224	2430.40	1337.16
7	GUIDE	36703752	9.54	3099	-0.012	-0.230	0.089	0.146	181.172969	0.223598	1922.63	1040.72

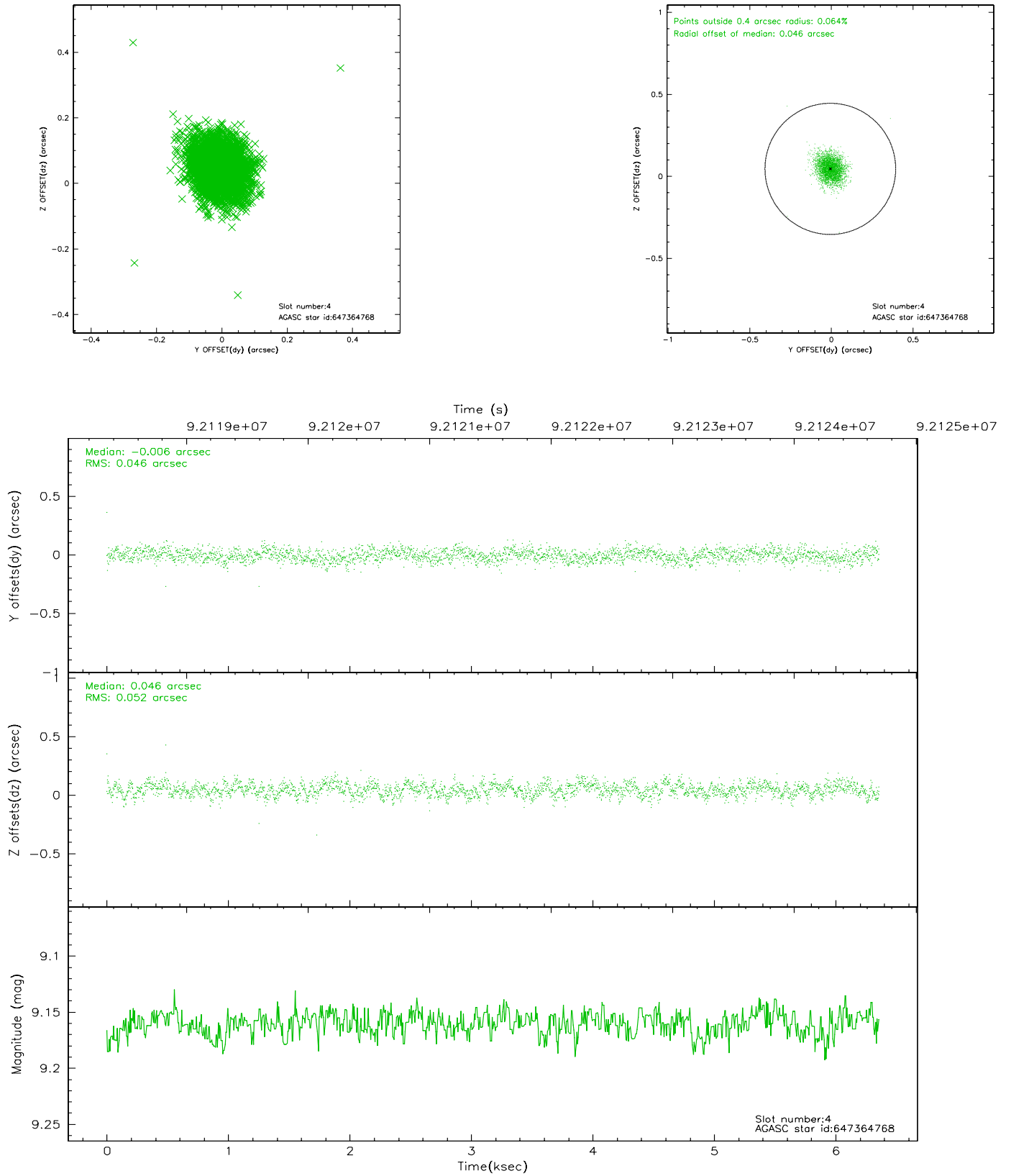


## 2.4 Star Slots

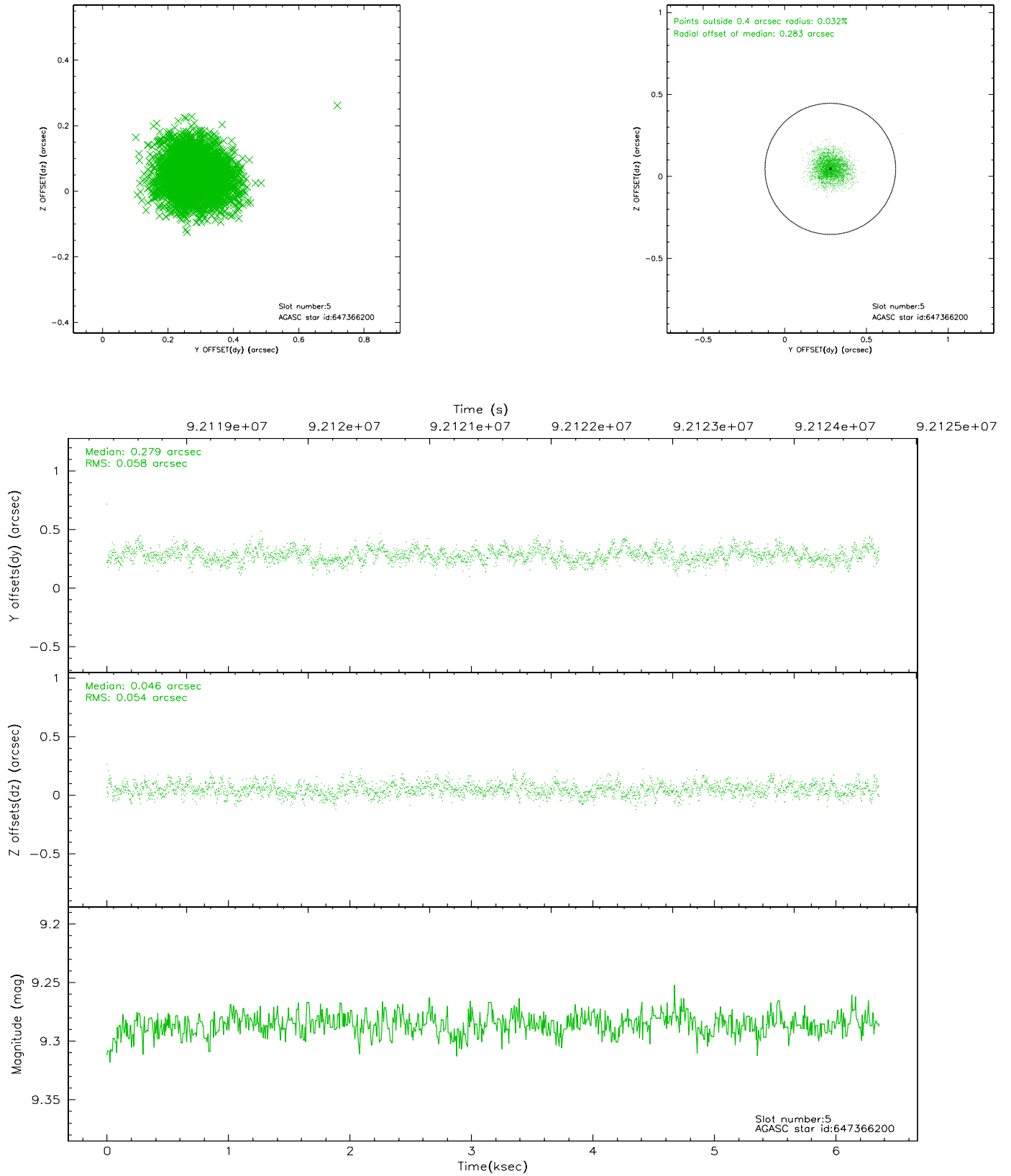
### 2.4.1 Slot 3



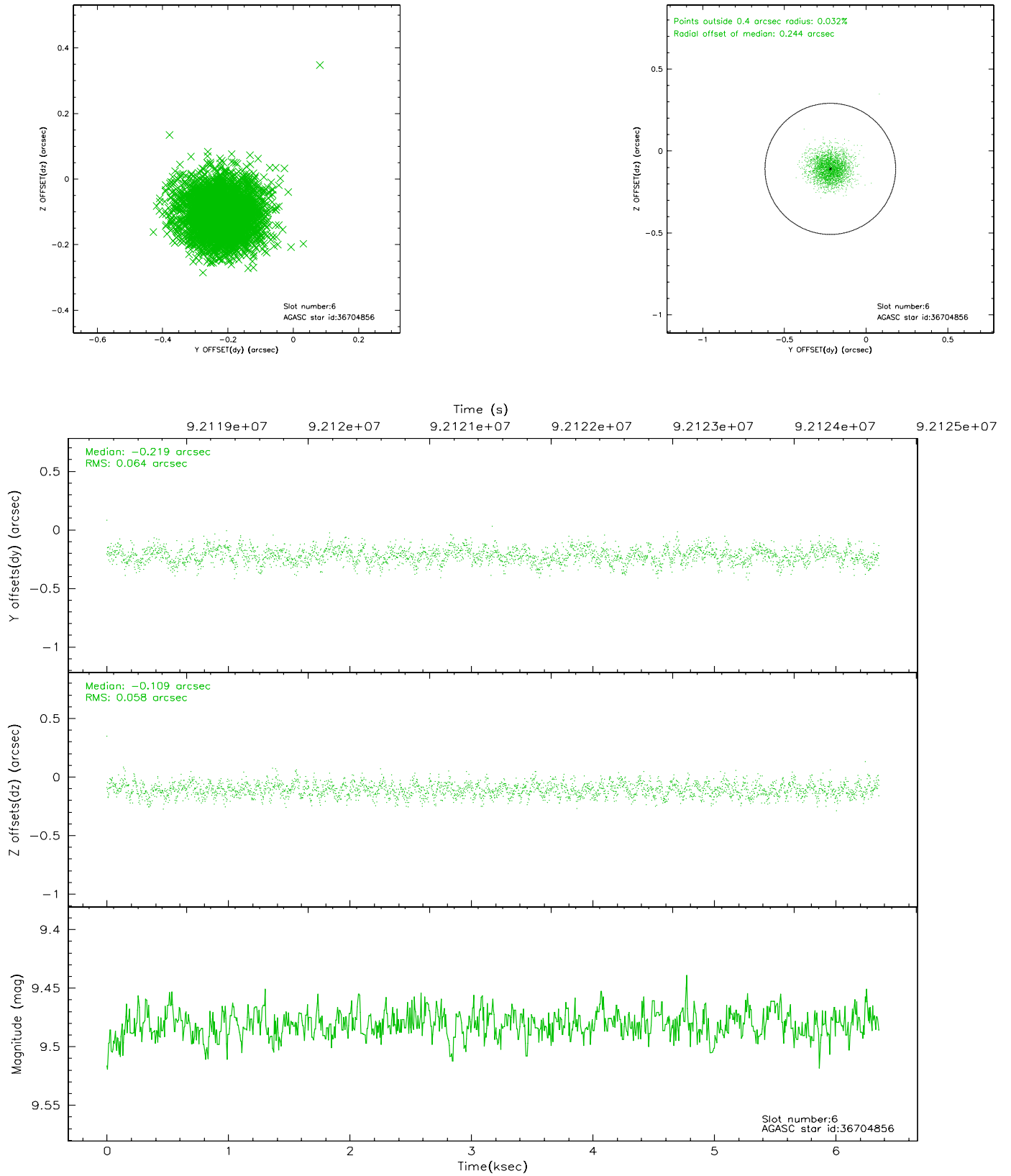
## 2.4.2 Slot 4



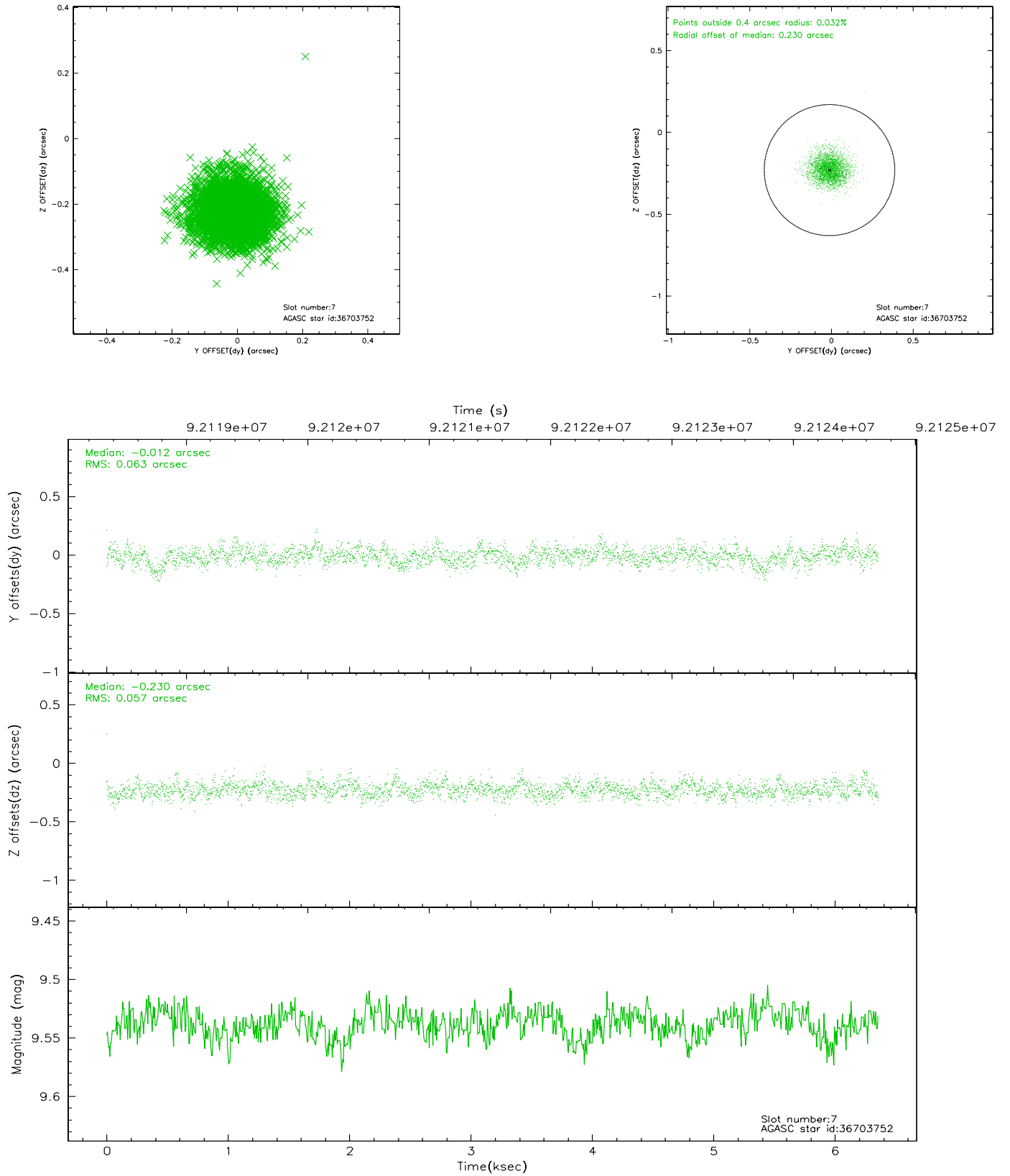
### 2.4.3 Slot 5



## 2.4.4 Slot 6

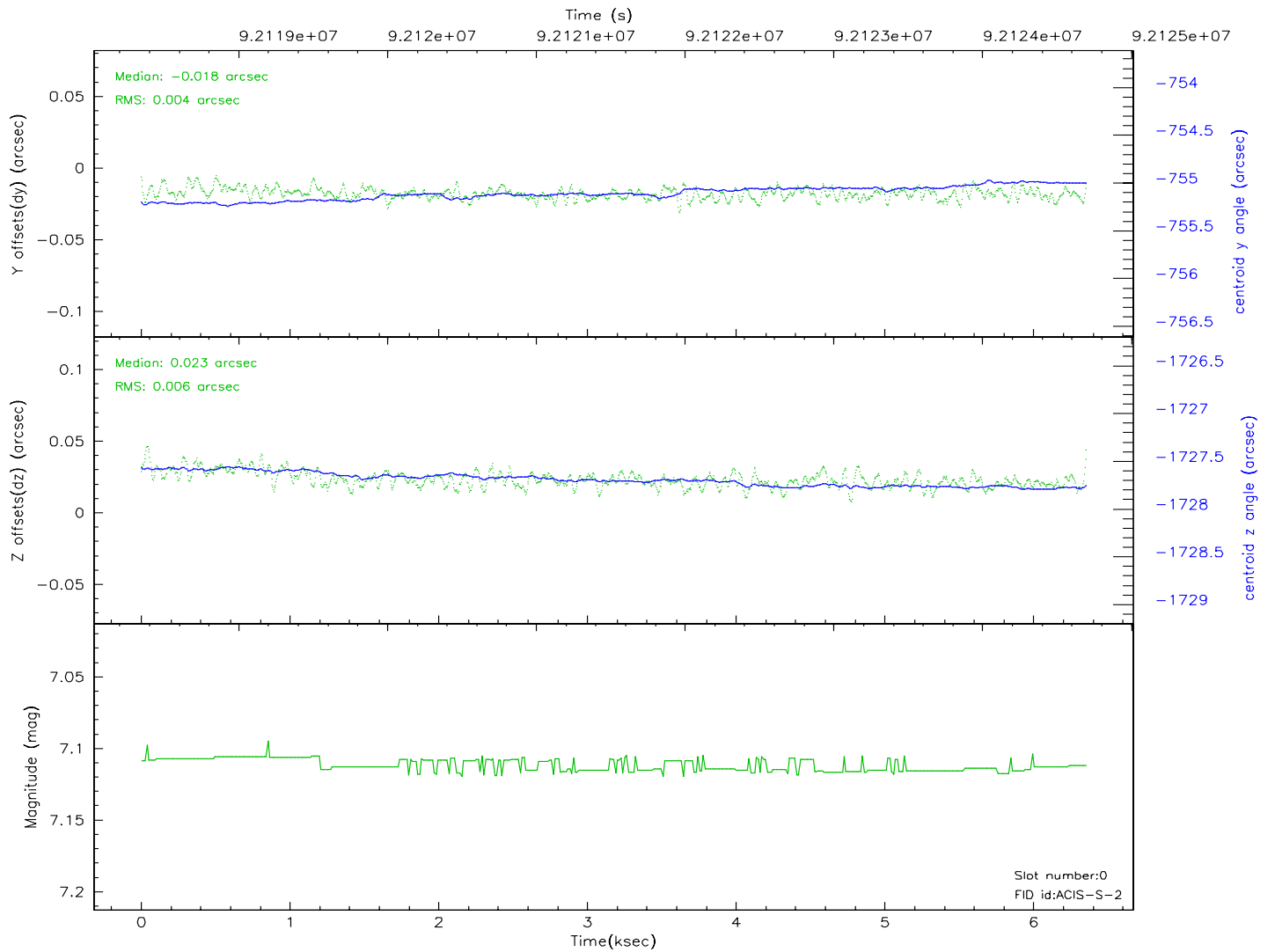
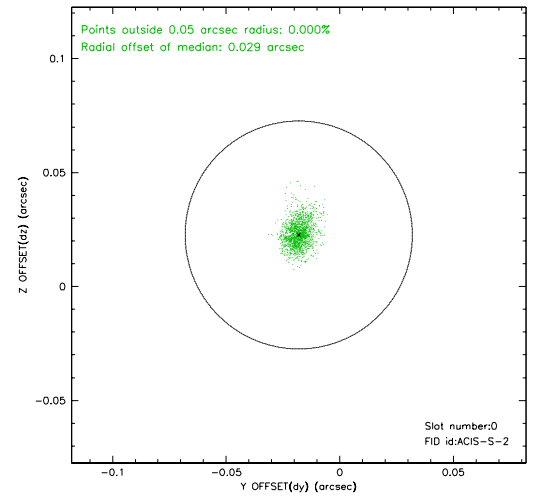
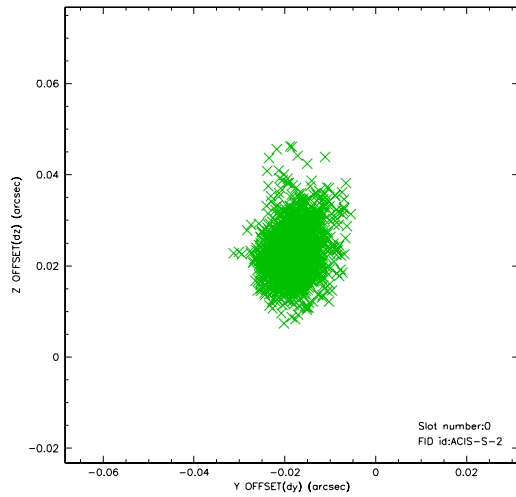


## 2.4.5 Slot 7

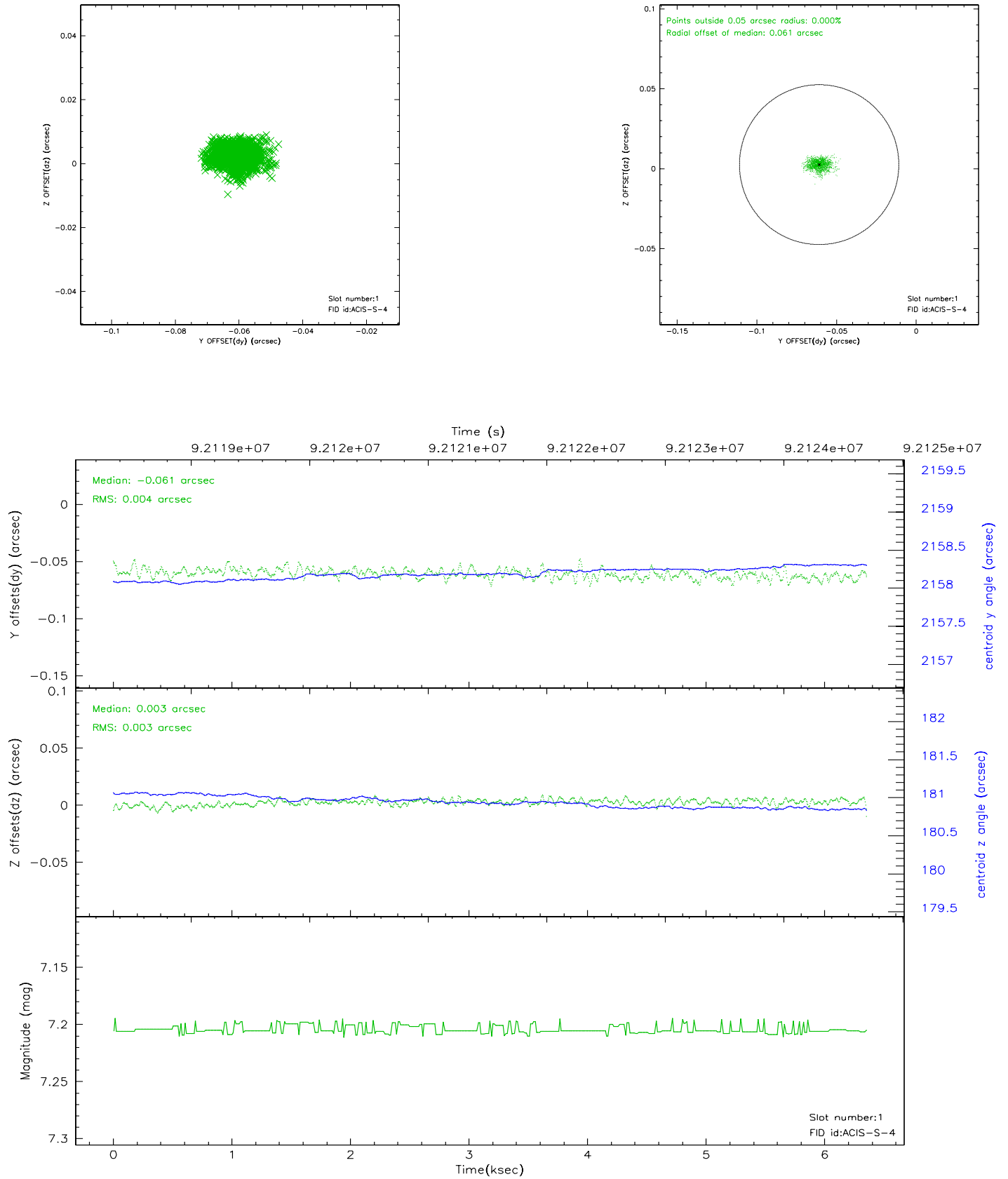


## 2.5 FID Slots

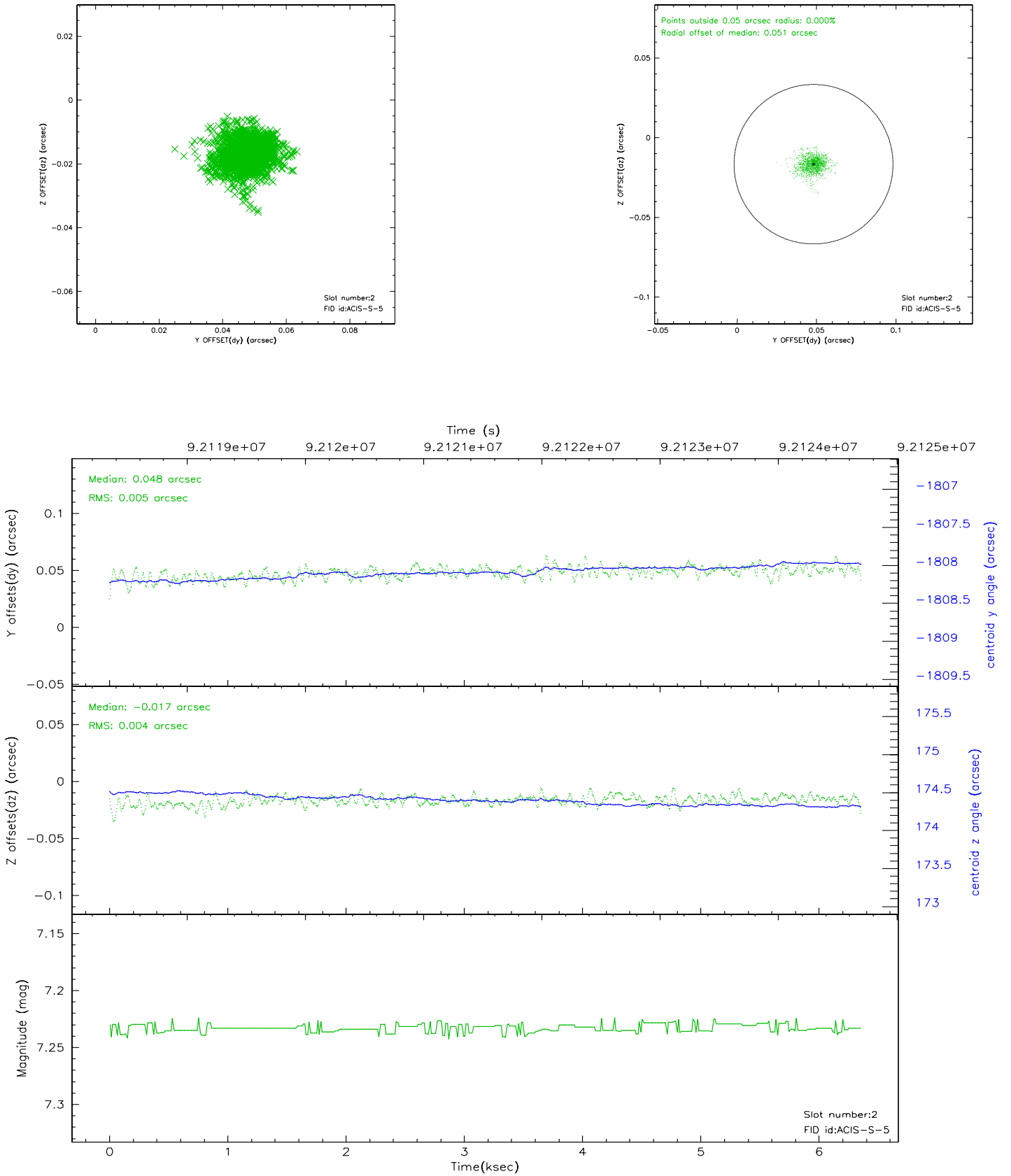
### 2.5.1 Slot 0



## 2.5.2 Slot 1

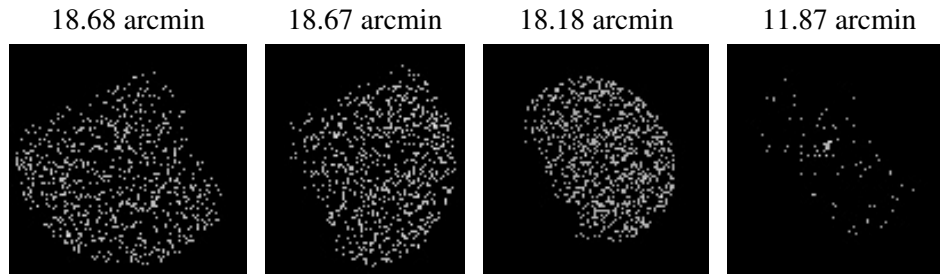


### 2.5.3 Slot 2





### 3 Point Sources



## A Summary

### A.1 Status

V&V Scientist	Beth Sundheim
V&V Date (YYYY-MM-DD)	2007.06.18
V&V Edition	1
V&V Disposition and Status	OK
V&V Charge Time	6.352

### A.2 Comments