

# V&V Reference Report

## L2 ASCDS Version : 7.6.9

Observation 2181 - L2 Version 001  
Chandra X-Ray Center

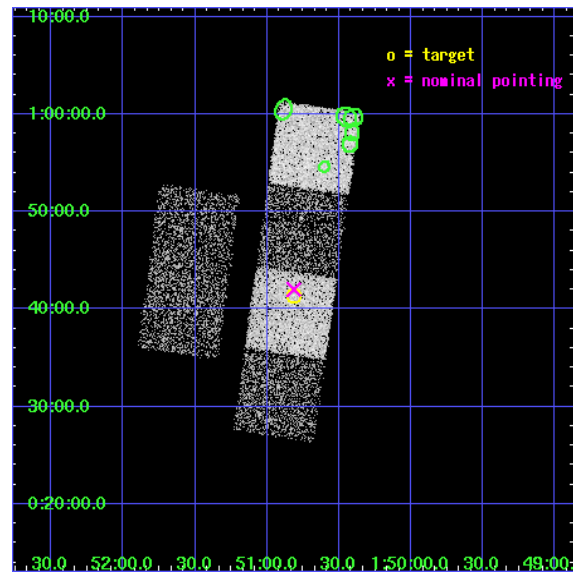
L2 Processing Date : Dec 21 2006

## Contents

<b>1</b>	<b>Front</b>	<b>2</b>
<b>2</b>	<b>OBI</b>	<b>3</b>
2.1	OBI . . . . .	3
2.1.1	Images . . . . .	3
2.1.2	Bias . . . . .	3
2.1.3	Parameters . . . . .	4
2.1.4	Events . . . . .	4
2.2	Compared Parameters . . . . .	5
2.3	Aspect . . . . .	6
2.4	Star Slots . . . . .	9
2.4.1	Slot 3 . . . . .	9
2.4.2	Slot 4 . . . . .	10
2.4.3	Slot 5 . . . . .	11
2.4.4	Slot 6 . . . . .	12
2.4.5	Slot 7 . . . . .	13
2.5	FID Slots . . . . .	14
2.5.1	Slot 0 . . . . .	14
2.5.2	Slot 1 . . . . .	15
2.5.3	Slot 2 . . . . .	16
<b>3</b>	<b>Point Sources</b>	<b>17</b>
<b>A</b>	<b>Summary</b>	<b>18</b>
A.1	Status . . . . .	18
A.2	Comments . . . . .	18

# 1 Front

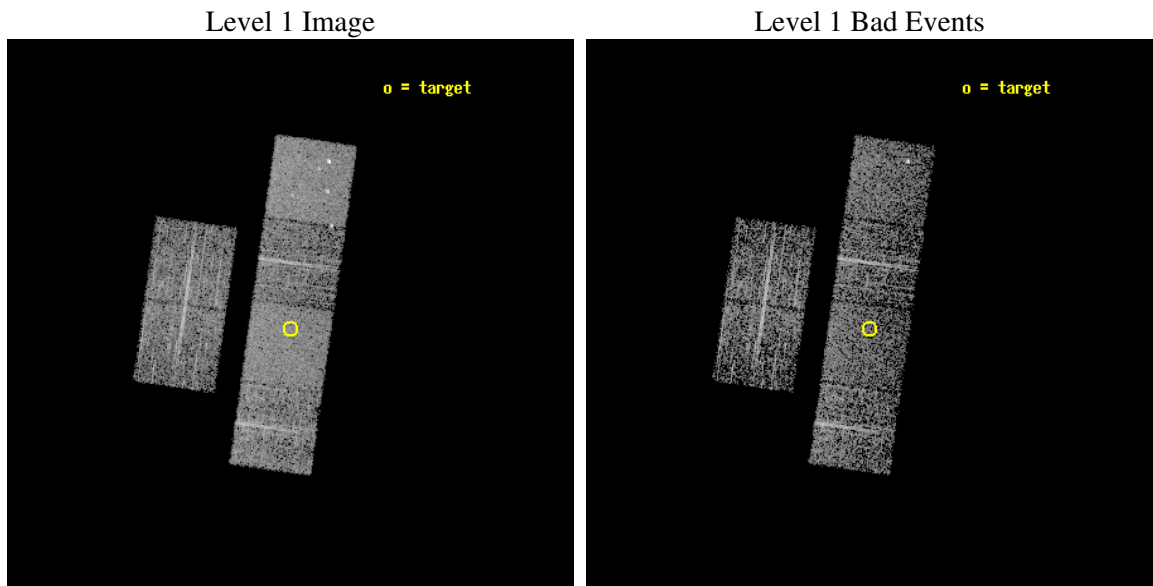
seq_num	700371
obs_id	2181
title	SURVEY OF RADIO QUIET Z>4 QUASARS
observer	Dr. Jill Bechtold
object	SDSS0150+0041
dtcycle	0
cycle	P
ra_targ	27.703333
dec_targ	0.690556
ra_nom	27.703626398114
dec_nom	0.70026463896418
roll_nom	98.104181422892
revision	2
ontime	3276.8000030518
livetime	3235.307188361
ontime2	3276.8000030518
ontime3	3276.8000030518
ontime5	3276.8000030518
ontime6	3276.8000030518
ontime7	3276.8000030518
ontime8	3276.8000030518
l2events	30343



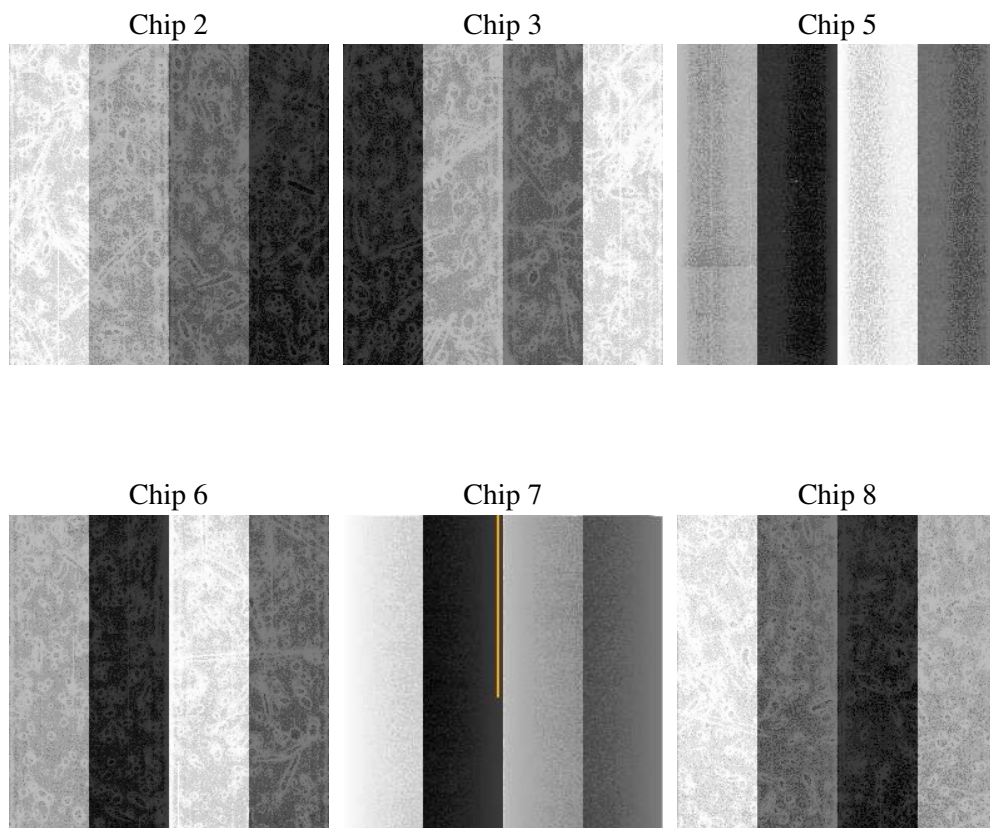
## 2 OBI

### 2.1 OBI

#### 2.1.1 Images



#### 2.1.2 Bias



### 2.1.3 Parameters

obi_num	0
ascdsver	7.6.9
caldsver	3.2.4
date	2006-12-22T00:44:45
revision	2

sched_exp_time	3315.000000
ontime	3283.1330399066
ontime2	3283.1330399066
ontime3	3283.1330399066
ontime5	3283.1330399066
ontime6	3283.1330399066
ontime7	3283.1330399066
ontime8	3283.1330399066
l1events	137188

### 2.1.4 Events

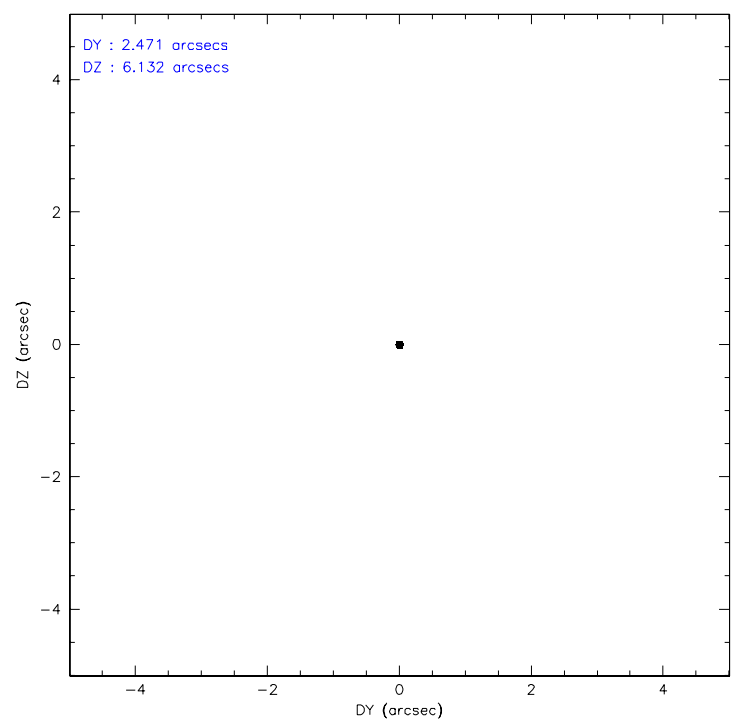
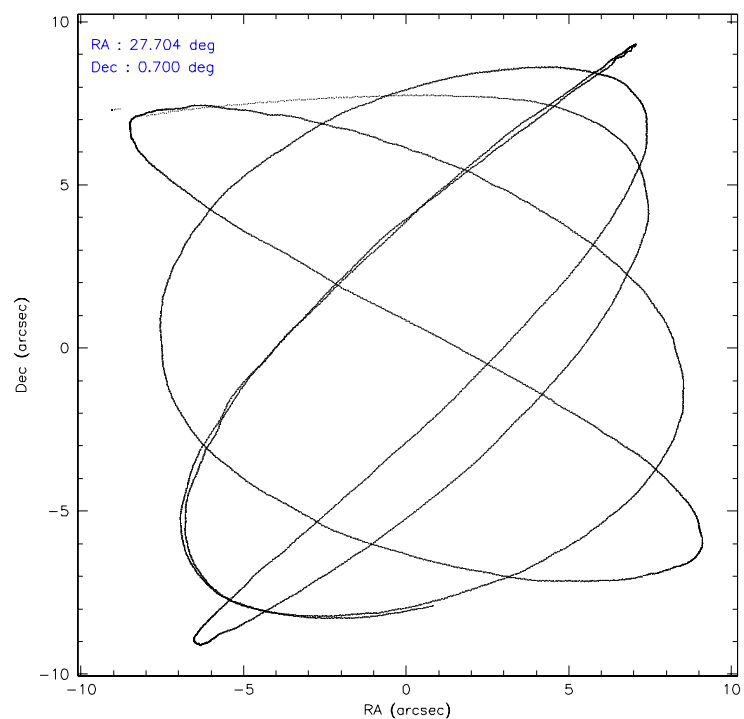
	ccd 2	ccd 3	ccd 5	ccd 6	ccd 7	ccd 8
level 1 events	20321	19485	29099	18704	25737	23842
rejected events	18198	17280	15629	16413	15137	18705
rejected %	89%	88%	53%	87%	58%	78%

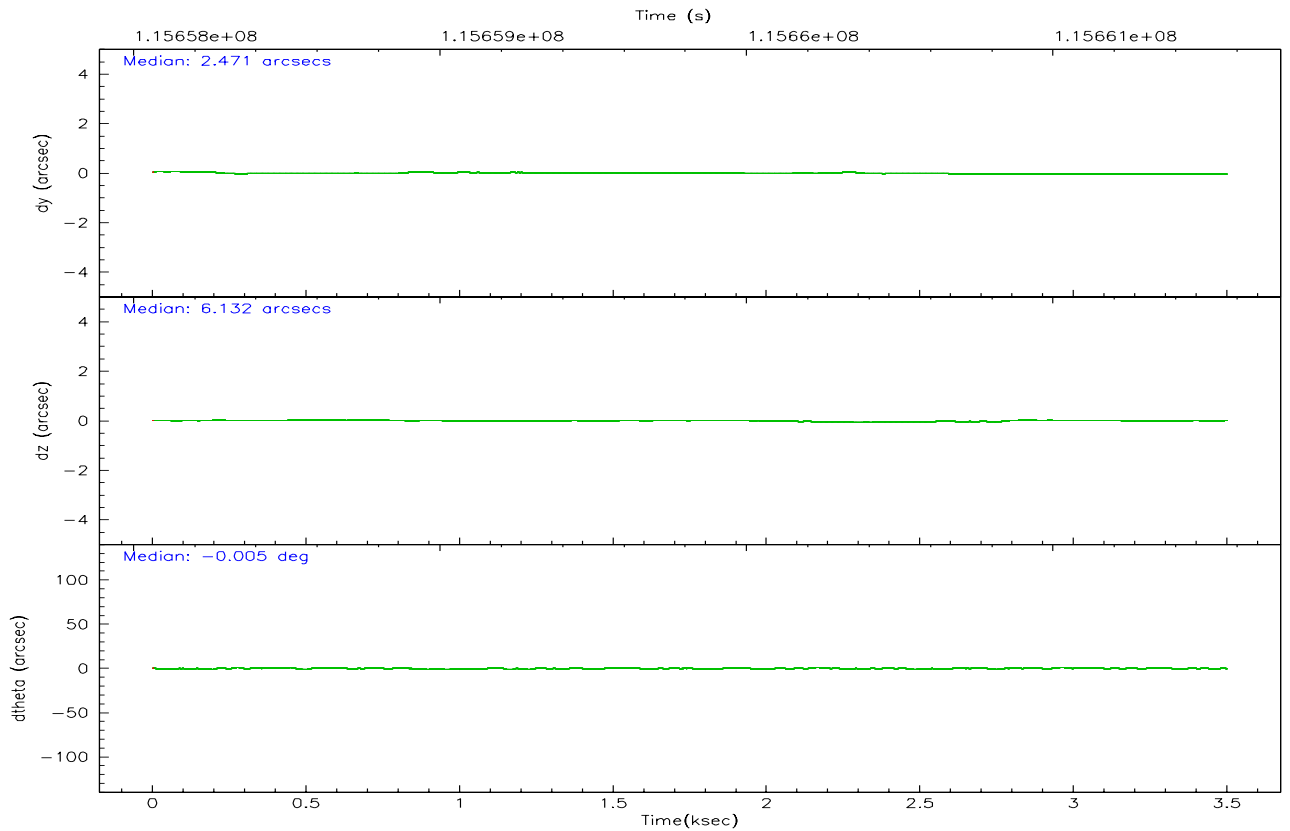
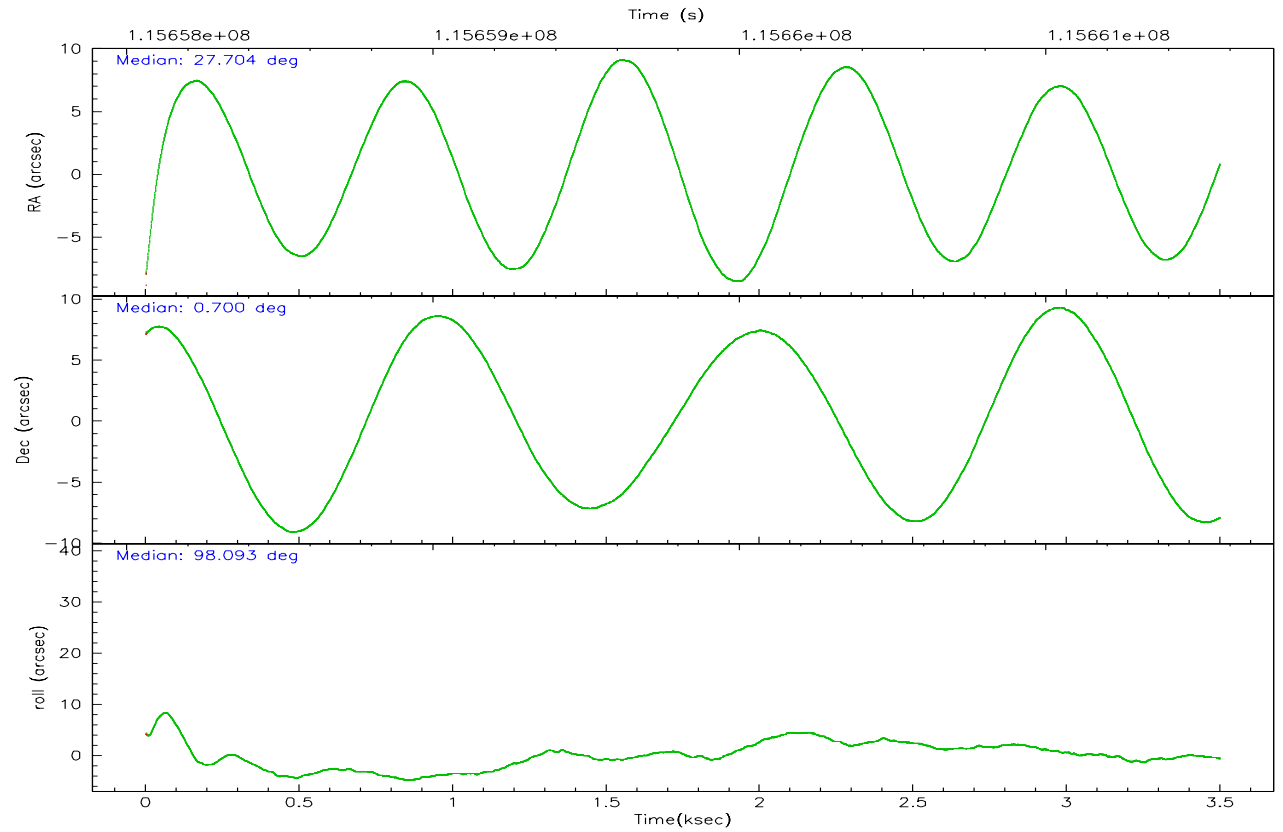
	ccd 2	ccd 3	ccd 5	ccd 6	ccd 7	ccd 8
grade 0 events	873	912	1323	960	720	1693
	4%	4%	4%	5%	2%	7%
grade 1 events	12	8	42	11	16	14
	0%	0%	0%	0%	0%	0%
grade 2 events	462	495	4393	484	2477	1043
	2%	2%	15%	2%	9%	4%
grade 3 events	223	207	318	243	601	635
	1%	1%	1%	1%	2%	2%
grade 4 events	180	200	303	197	568	563
	0%	1%	1%	1%	2%	2%
grade 5 events	710	743	1484	806	1630	1035
	3%	3%	5%	4%	6%	4%
grade 6 events	388	395	7164	410	6255	1208
	1%	2%	24%	2%	24%	5%
grade 7 events	17473	16525	14072	15593	13470	17651
	85%	84%	48%	83%	52%	74%

## 2.2 Compared Parameters

Parameter	Planned	Actual	Parameter	Planned	Actual
Instrument	ACIS	ACIS	Obspar format version number	6	6
Detector	ACIS-235678	ACIS-235678	Obspar file type	PREDICTED	ACTUAL
Grating	NONE	NONE	Obspar update status	NONE	UPDATED
Data mode	FAINT	FAINT	Number of optional ACIS chips dropped	0	0
Observation mode	POINTING	POINTING	On-chip summing requested	N	N
Pointing RA	27.720768	27.70362639811382	Subarray requested	NONE	NONE
Pointing Dec	0.679022	0.7002646389641805	Alternating exposures requested	N	N
Pointing Roll	97.947355	98.10418142289214	Primary exposure time	0.000000	3.2
SIM focus pos (mm)	-0.684267	-0.6828225247311905			
SIM defocus (mm)	0	0.001444936568705701			
SIM translation stage pos (mm)	-190.132523	-190.1425803651734			
SIM translation stage offset (mm)	0	0.01005778216563158			
Observation start time	115658251.184000	115657282.82837			
Observation start date	2001-08-31T15:16:27	2001-08-31T15:01:22			
Observation end time	115661566.184000	115662164.39107			
Observation end date	2001-08-31T16:11:42	2001-08-31T16:22:44			
Read mode	TIMED	TIMED			

## 2.3 Aspect





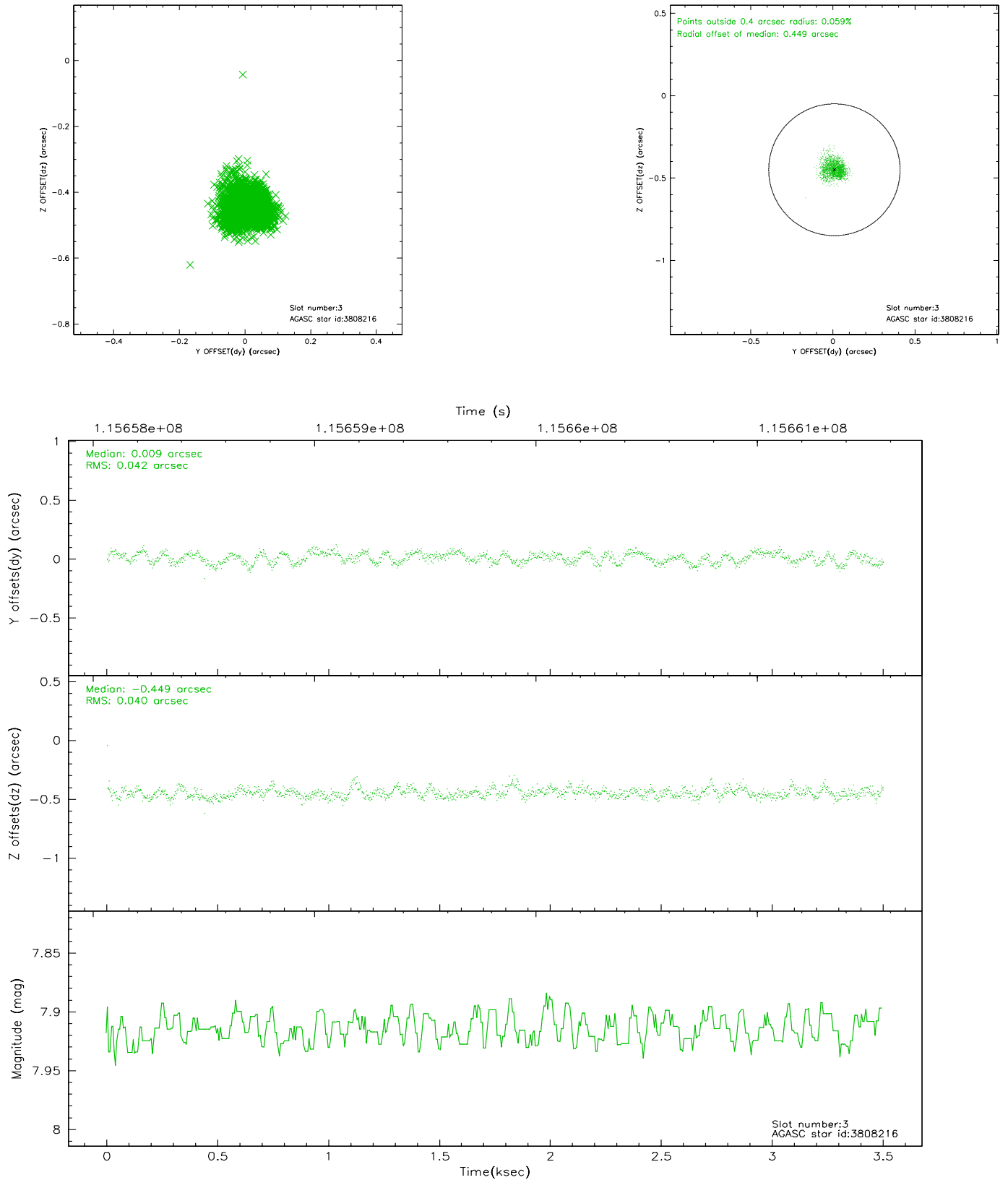
### Slot Statistics

slot	status	id	mag	n_pts	med_dy	med_dz	dr1	dr2	ra	dec	mean_y	mean_z
0	FID	ACIS-S-2	7.11	854	-0.021	0.037	0.007	0.011	0.000000	0.000000	-755.08	-1727.20
1	FID	ACIS-S-4	7.20	854	-0.090	0.000	0.007	0.013	0.000000	0.000000	2157.27	179.44
2	FID	ACIS-S-5	7.23	854	0.080	-0.028	0.007	0.012	0.000000	0.000000	-1805.54	175.06
3	GUIDE	3808216	7.91	1708	0.009	-0.449	0.061	0.094	27.071052	0.452147	-484.67	2429.70
4	GUIDE	3937856	8.73	1708	-0.098	-0.103	0.057	0.092	27.502239	0.986318	1205.06	628.53
5	GUIDE	3936880	9.90	1707	-0.091	0.121	0.111	0.185	27.927876	1.218820	1823.48	-1005.19
6	GUIDE	3933736	8.63	1708	0.057	0.230	0.082	0.127	28.335603	0.387418	-1342.98	-2046.69
7	GUIDE	3932304	10.24	1706	0.122	0.199	0.114	0.190	27.757003	0.587644	-343.33	-83.85

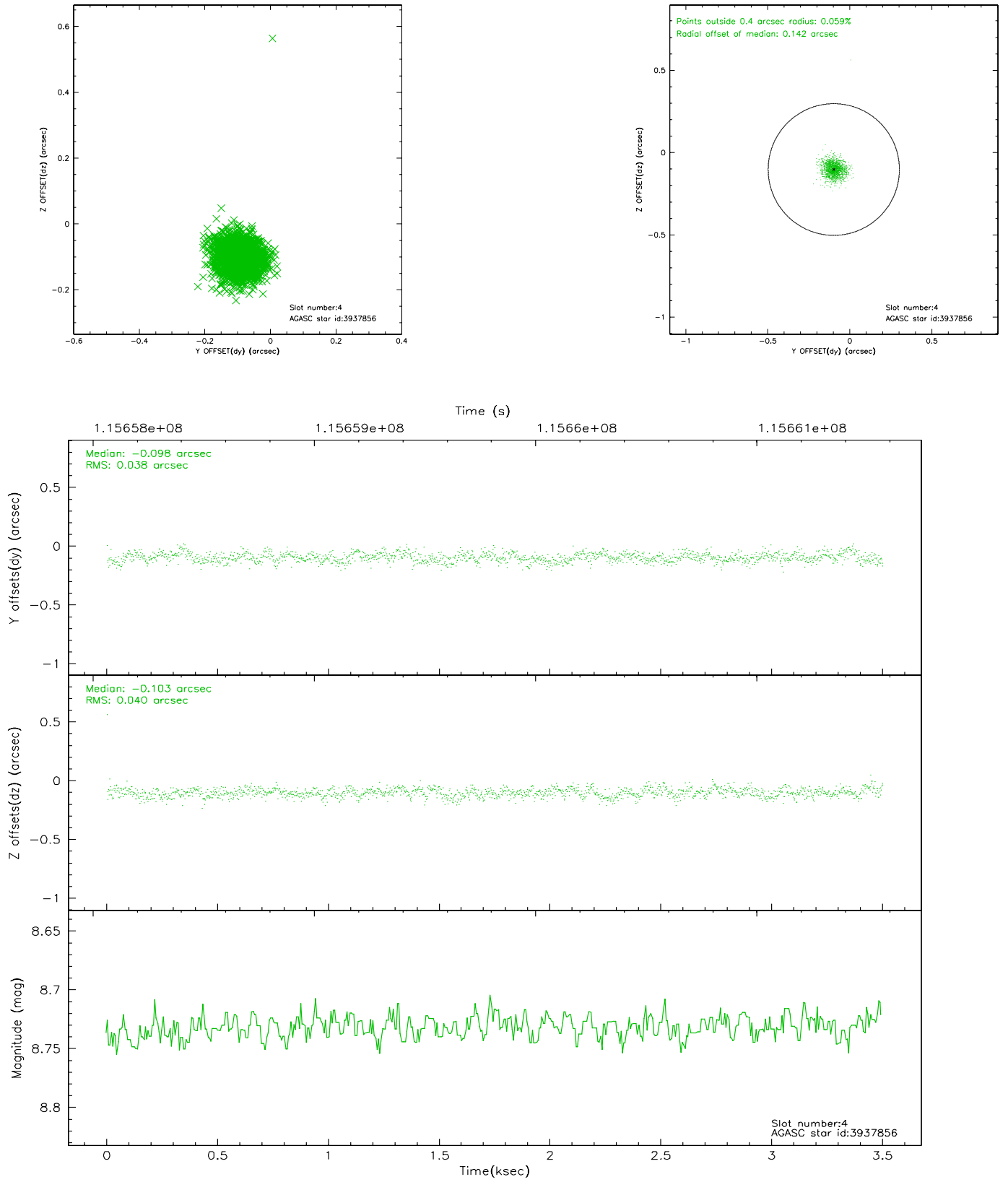


## 2.4 Star Slots

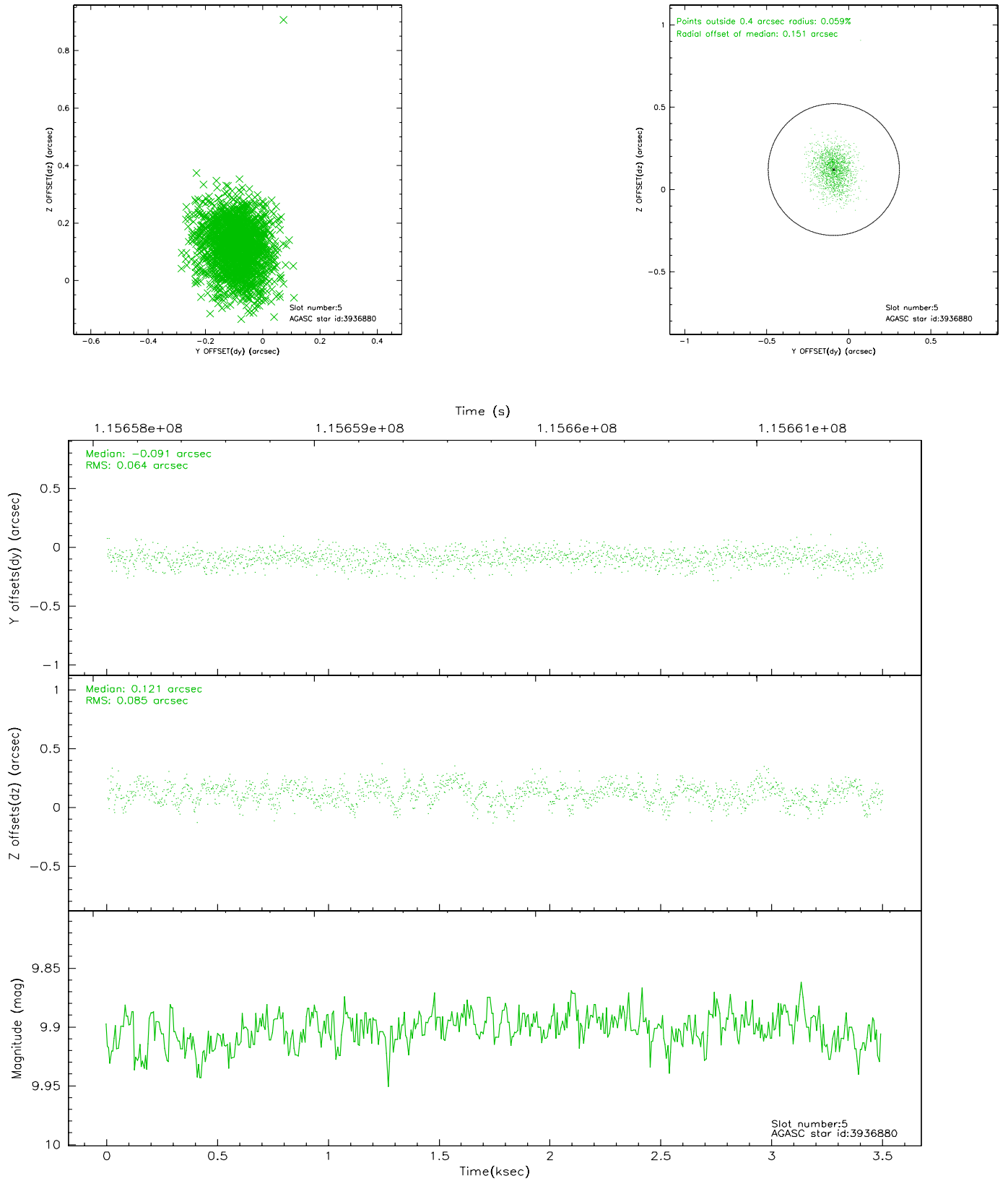
### 2.4.1 Slot 3



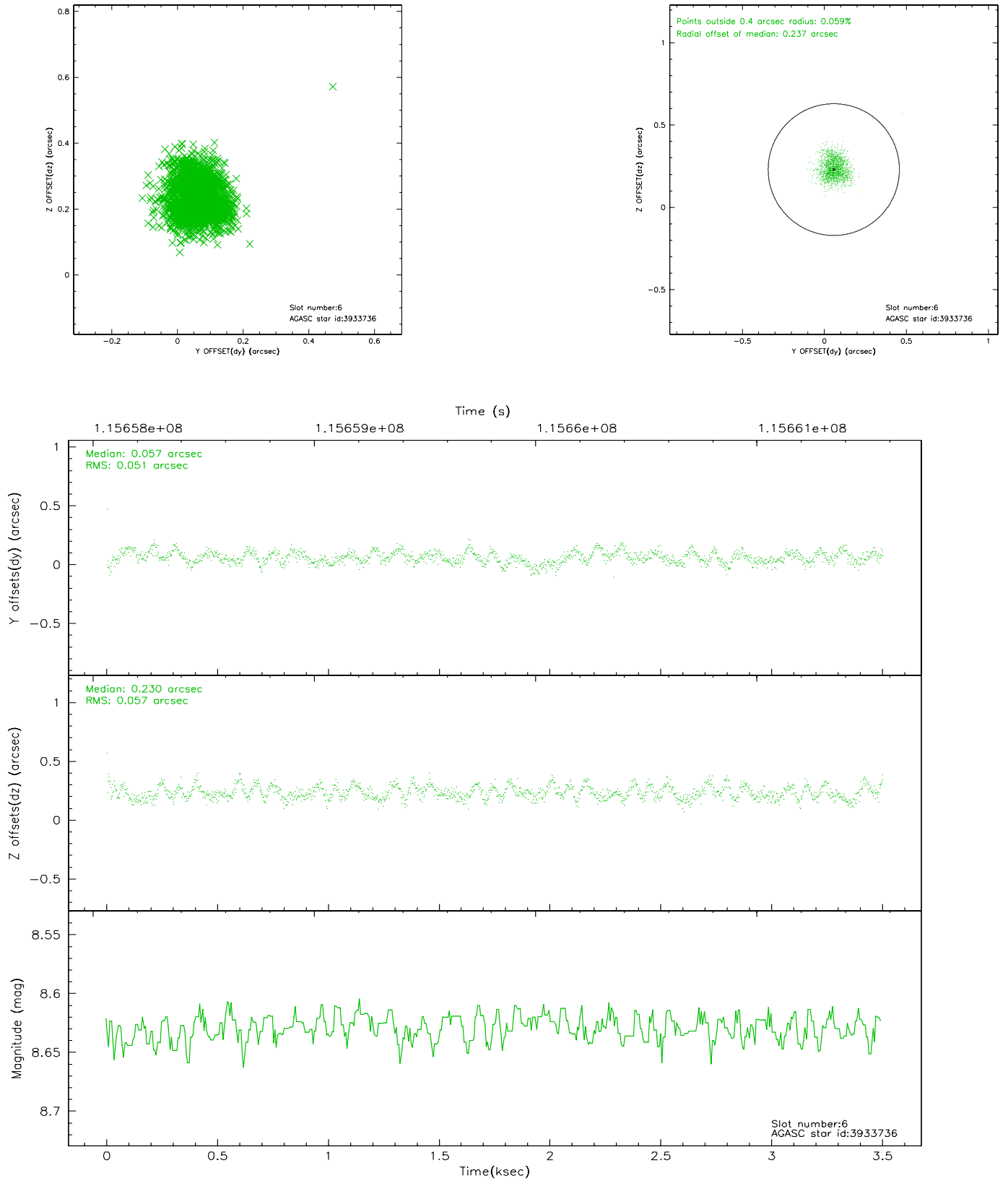
## 2.4.2 Slot 4



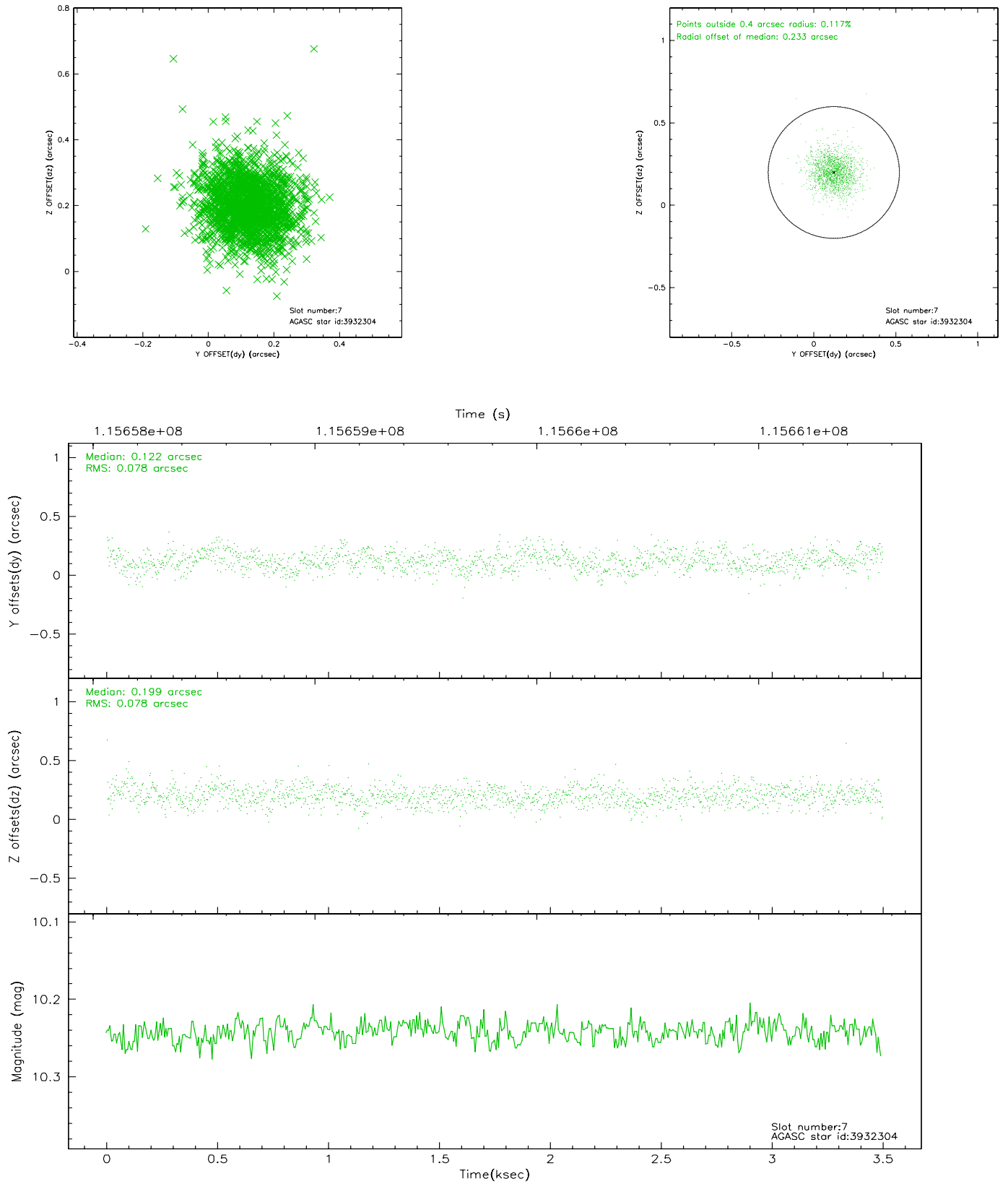
### 2.4.3 Slot 5



## 2.4.4 Slot 6

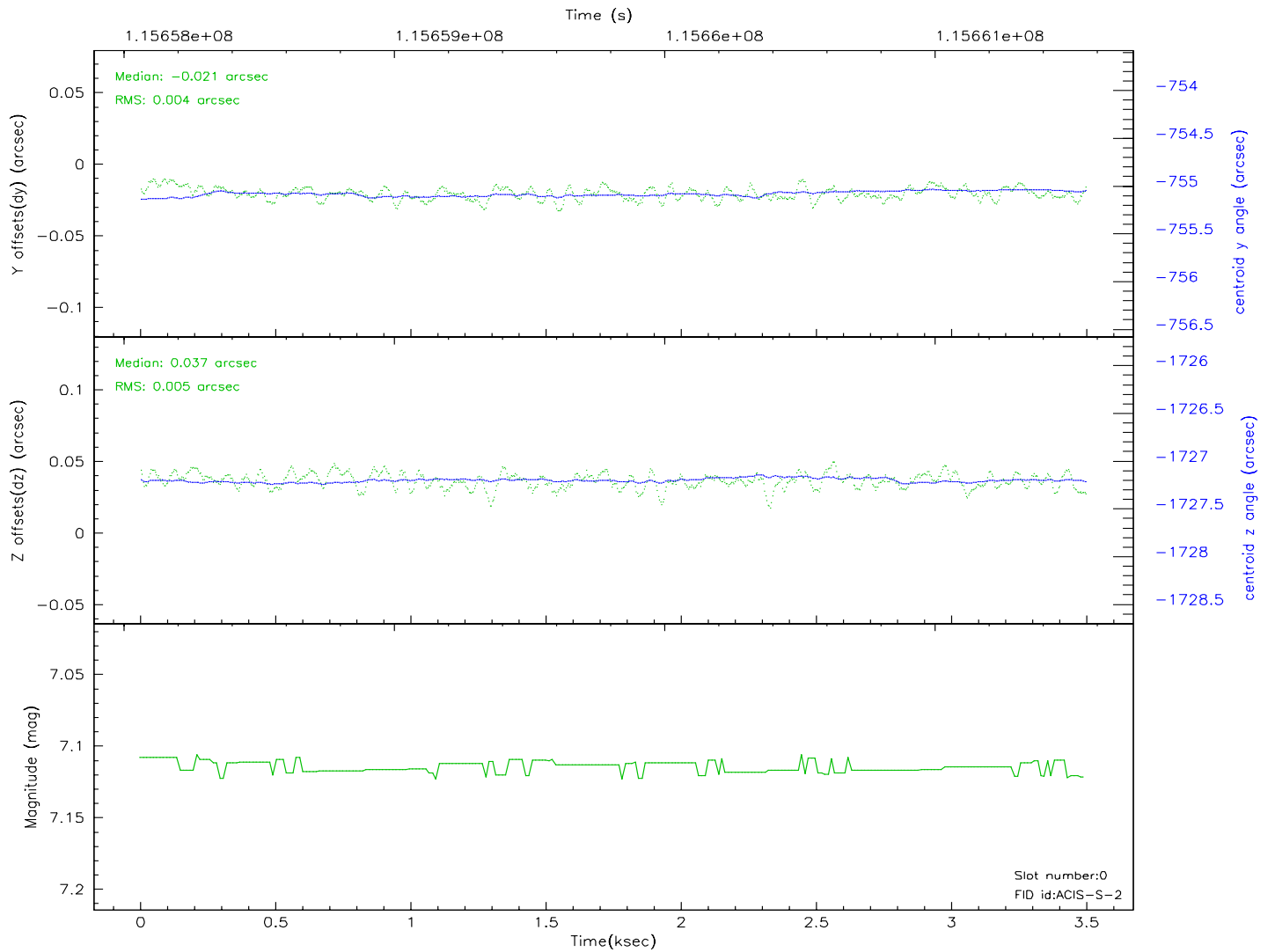
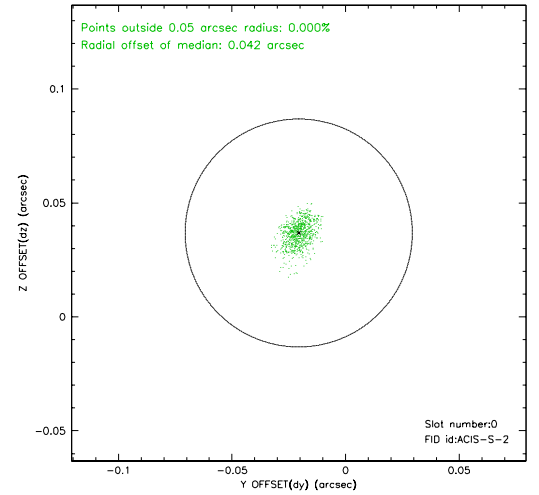
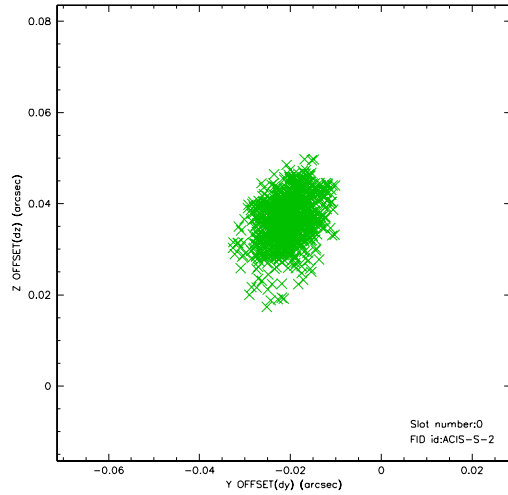


## 2.4.5 Slot 7

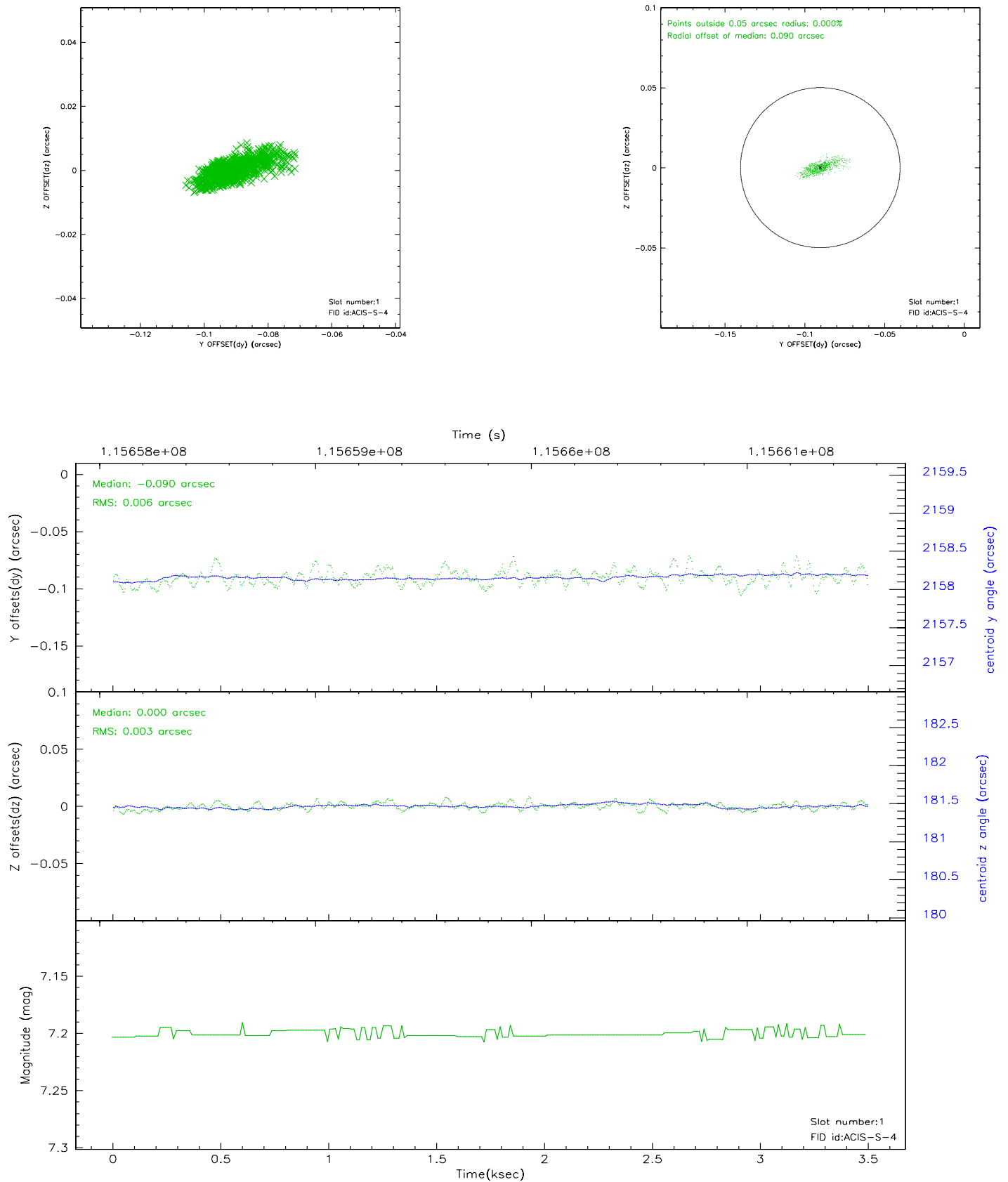


## 2.5 FID Slots

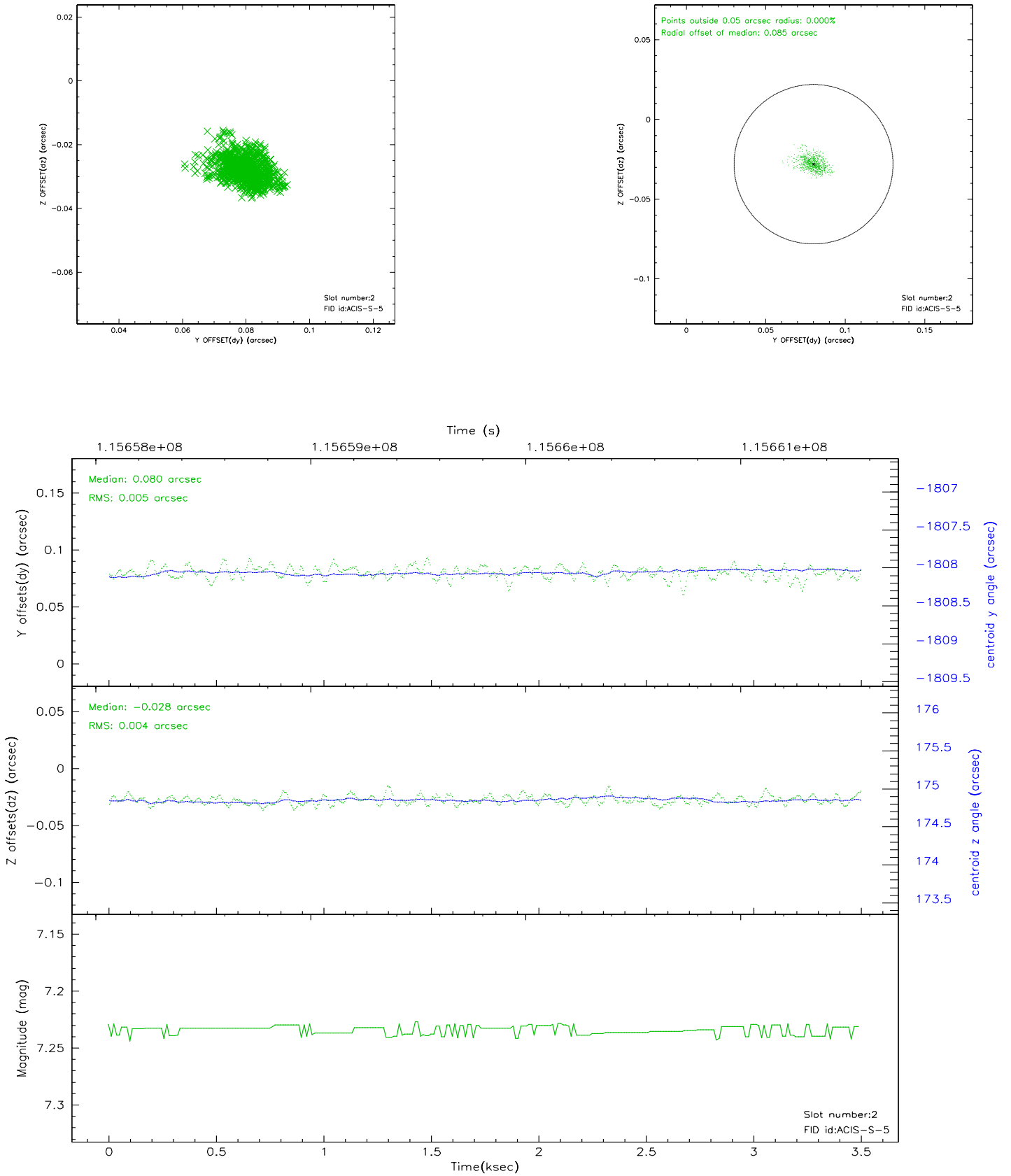
### 2.5.1 Slot 0



## 2.5.2 Slot 1

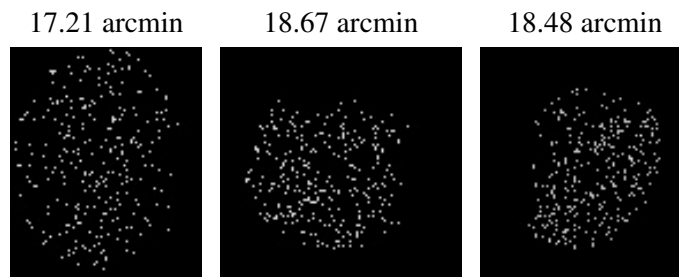


### 2.5.3 Slot 2





### 3 Point Sources



## A Summary

### A.1 Status

V&V Scientist	Jen Lauer
V&V Date (YYYY-MM-DD)	2006.12.22
V&V Edition	1
V&V Disposition and Status	OK
V&V Charge Time	3.28

### A.2 Comments