

V&V Reference Report

L2 ASCDS Version : 8.4.5

Observation 2168 - L2 Version 3
Chandra X-Ray Center

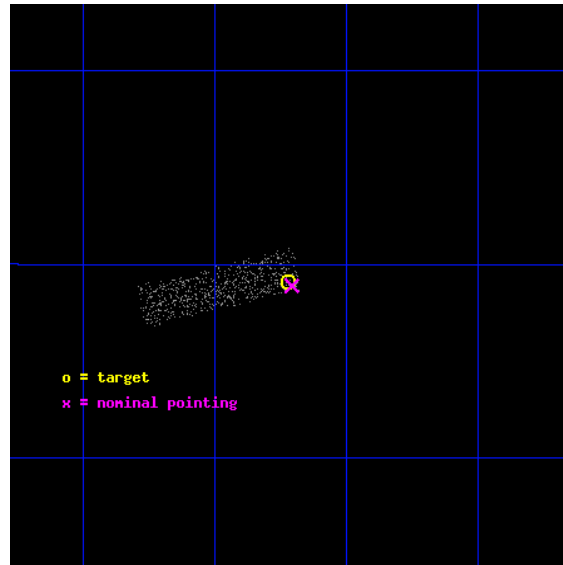
L2 Processing Date : Sep 21 2012

Contents

1	Front	2
2	OBI	3
2.1	OBI	3
2.1.1	Images	3
2.1.2	Bias	3
2.1.3	Parameters	4
2.1.4	Events	4
2.2	Compared Parameters	5
2.3	Aspect	6
2.4	Star Slots	9
2.4.1	Slot 3	9
2.4.2	Slot 4	10
2.4.3	Slot 5	11
2.4.4	Slot 6	12
2.4.5	Slot 7	13
2.5	FID Slots	14
2.5.1	Slot 0	14
2.5.2	Slot 1	15
2.5.3	Slot 2	16
A	Summary	17
A.1	Status	17
A.2	Comments	17

1 Front

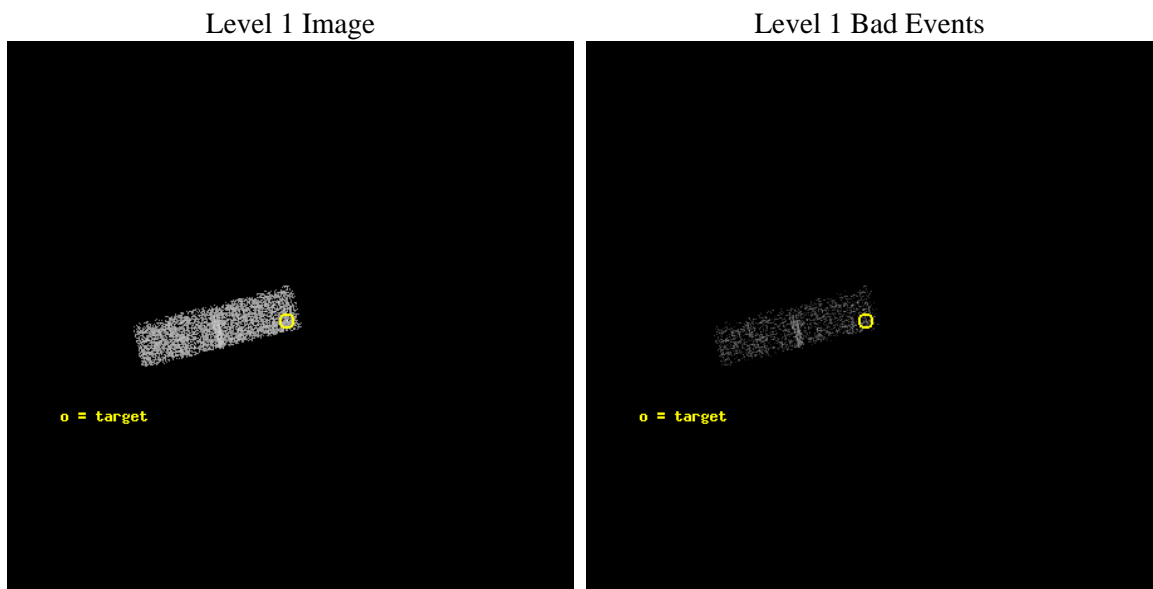
seq_num	700358	Sequence number
obs_id	2168	Observation id
title	RED QUASARS AND THE X-RAY BACKGROUND	Proposal title
observer	Dr. Belinda Wilkes	Principal investigator
object	2MASSJ150113+2329	Source name
dtcycle	0	
cycle	P	events from which exps? Prim/Second/Both
ra_targ	225.305	Observer's specified target RA [deg]
dec_targ	23.485639	Observer's specified target Dec [deg]
ra_nom	225.30187363627	Nominal RA [deg]
dec_nom	23.48165521556	Nominal Dec [deg]
roll_nom	256.10473378569	Nominal Roll [deg]
revision	3	Processing version of data
ontime	3540.7999868244	Sum of GTIs [s]
livetime	3368.020533458	Livetime [s]
ontime3	3540.7999868244	Sum of GTIs [s]
l2events	730	Number of level 2 events



2 OBI

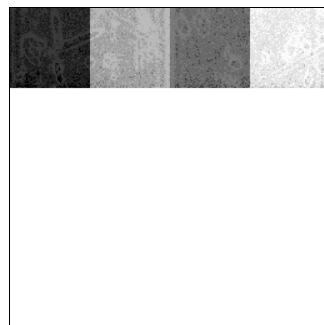
2.1 OBI

2.1.1 Images



2.1.2 Bias

Chip 3



2.1.3 Parameters

obi_num	1	Obi number	sched_exp_time	3400.000000	[s] Scheduled observation exposure time
ascdsver	8.4.5	Processing system revision	ontime	3540.7999868244	Sum of GTIs [s]
caldsver	4.5.1.1	 	ontime3	3540.7999868244	Sum of GTIs [s]
date	2012-09-21T09:00:06	Date and time of file creation	l1events	10249	Number of level 1 events
revision	3	Processing version of data			

2.1.4 Events

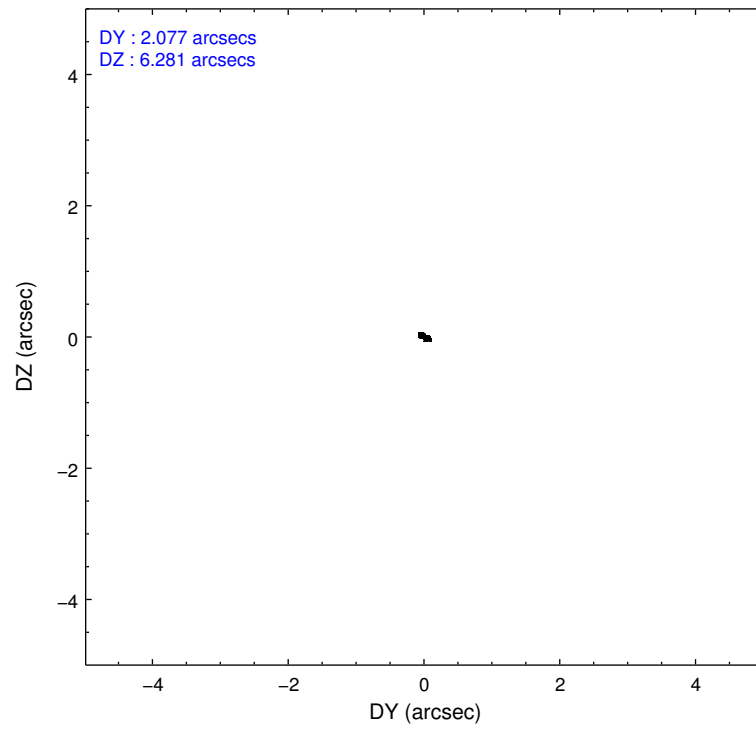
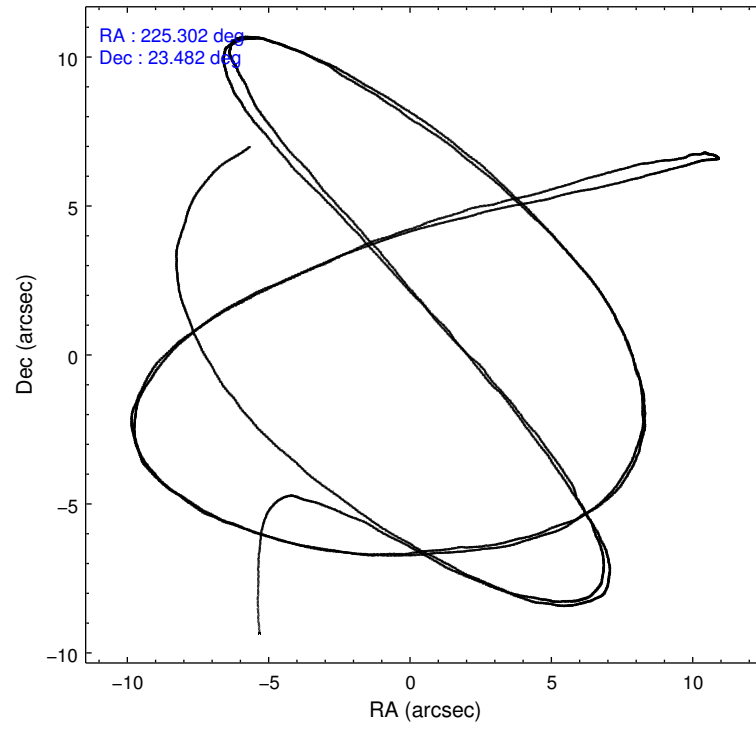
	ccd 3
level 1 events	10249
rejected events	9364
rejected %	91%

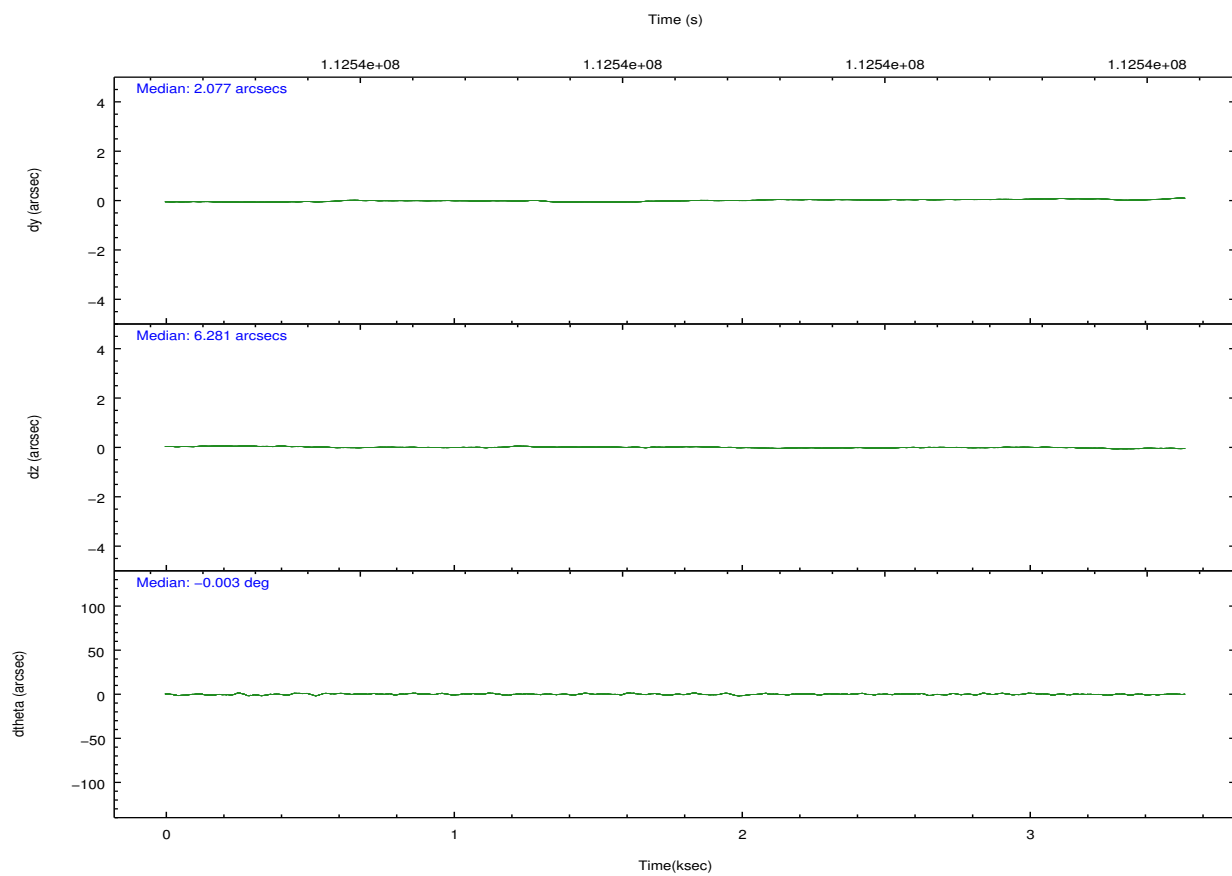
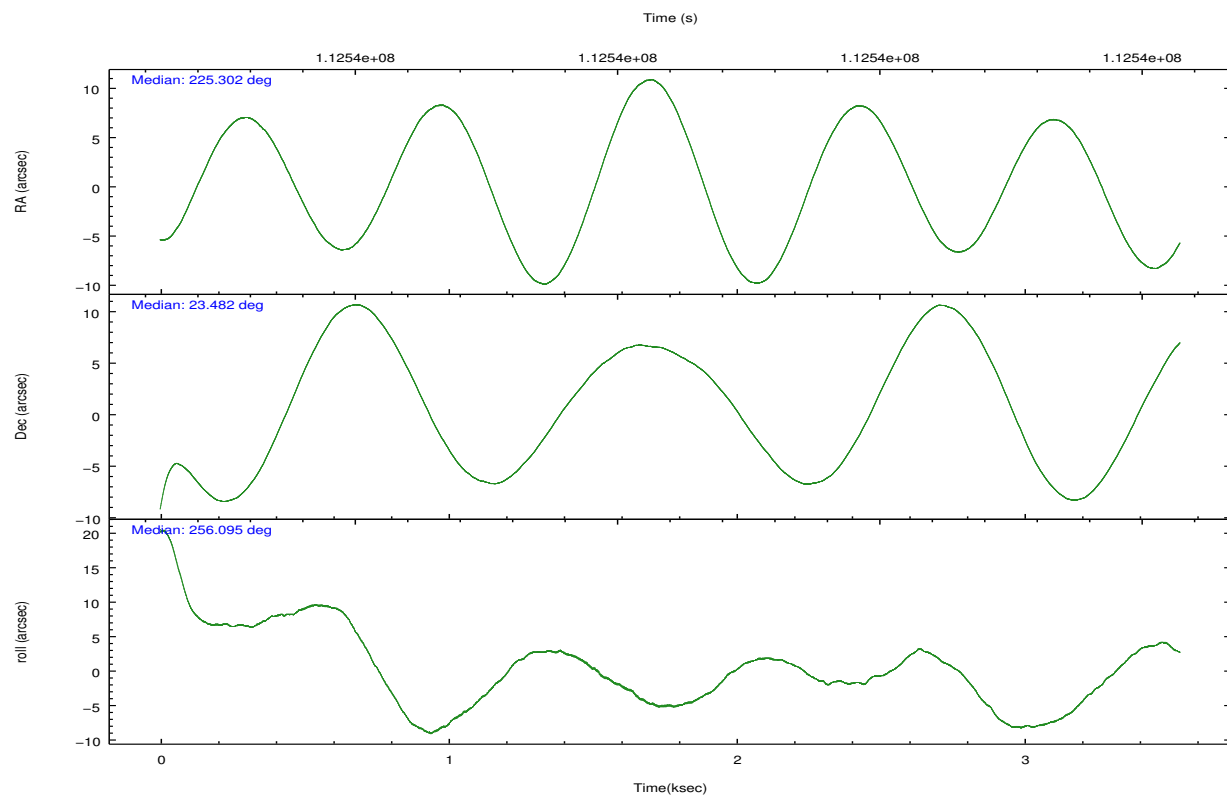
	ccd 3
grade 0 events	404
	3%
grade 1 events	1
	0%
grade 2 events	185
	1%
grade 3 events	206
	2%
grade 4 events	172
	1%
grade 5 events	269
	2%
grade 6 events	159
	1%
grade 7 events	8853
	86%

2.2 Compared Parameters

Parameter	Planned	Actual	Parameter	Planned	Actual
Instrument	ACIS	ACIS	Obspar format version number	7	7
Detector	ACIS-3	ACIS-3	Obspar file type	PREDICTED	ACTUAL
Grating	NONE	NONE	Obspar update status	NONE	UPDATED
Data mode	VFAINT	VFAINT	Number of optional ACIS chips dropped	0	0
Observation mode	POINTING	POINTING	On-chip summing requested	N	N
[deg] Pointing RA	225.293563	225.3018736362671	Subarray requested	CUSTOM	1/4
[deg] Pointing Dec	23.508209	23.48165521555958	Subarray start row	769	769
[deg] Pointing Roll	255.899326	256.1047337856917	Subarray row count	256	256
[mm] SIM focus pos	-0.782348	-0.7809083437167272	Alternating exposures requested	N	N
[mm] SIM defocus	0	0.001439871863259334	[s] Primary exposure time	0.000000	0.8
[mm] SIM translation stage pos	-233.592463	-233.5874344608287			
[mm] SIM translation stage offset	0	-0.005018542100998502			
[s] Observation start time (MET)	112535569.184000	112534409.05532			
Observation start date	2001-07-26T11:51:45	2001-07-26T11:33:29			
[s] Observation end time (MET)	112538969.184000	112539618.10552			
Observation end date	2001-07-26T12:48:25	2001-07-26T13:00:18			
Read mode	TIMED	TIMED			

2.3 Aspect



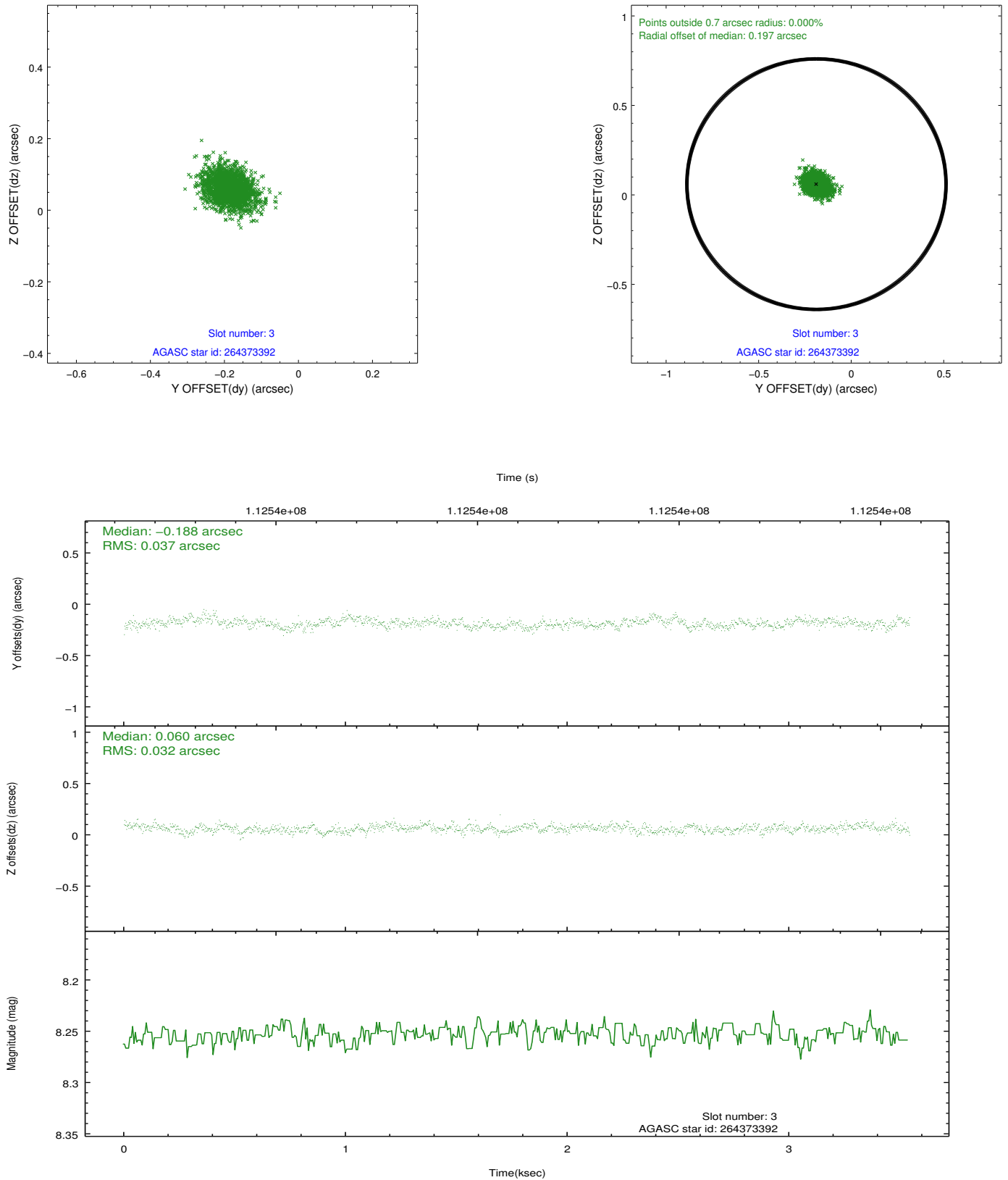


Slot Statistics

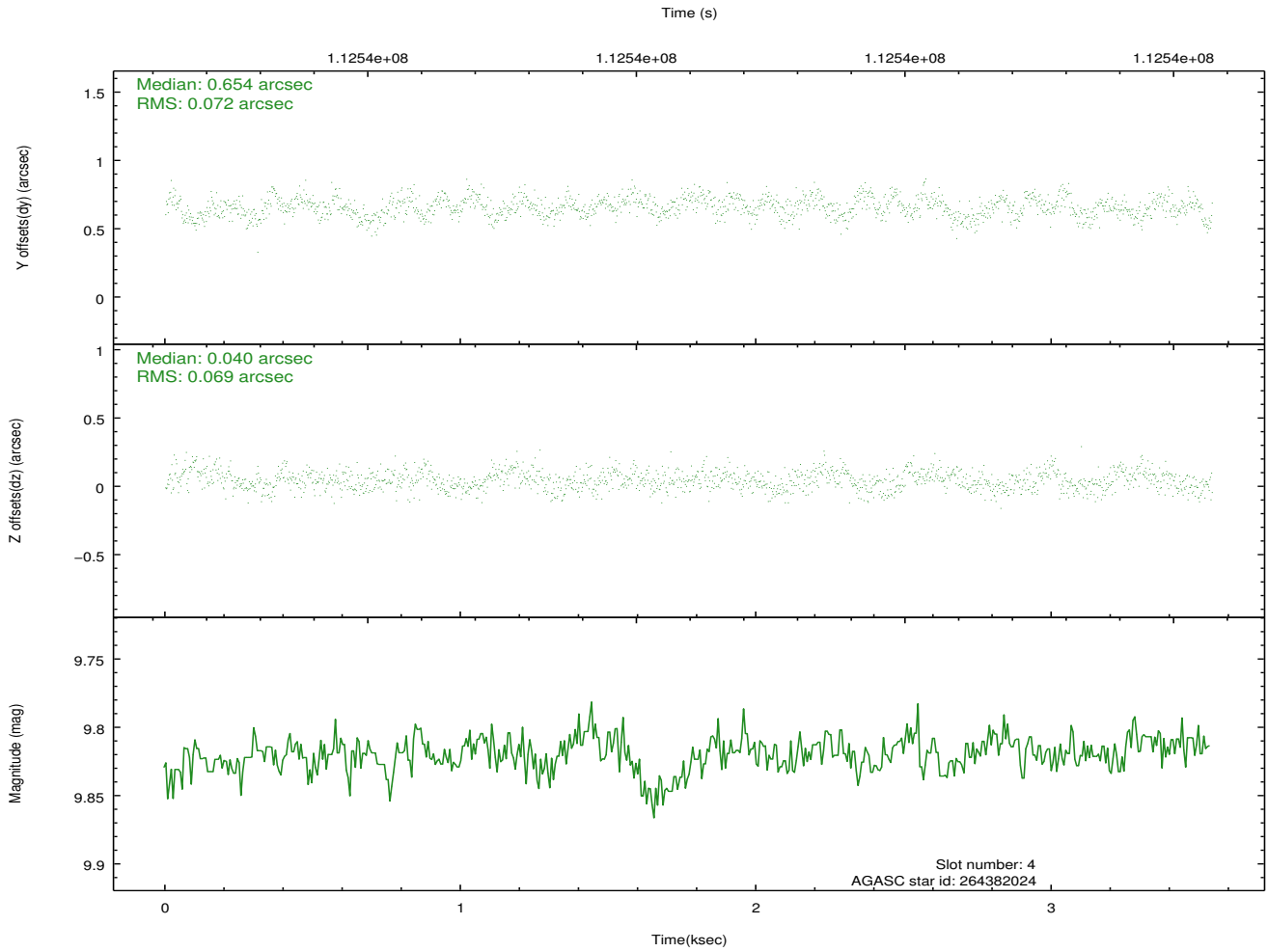
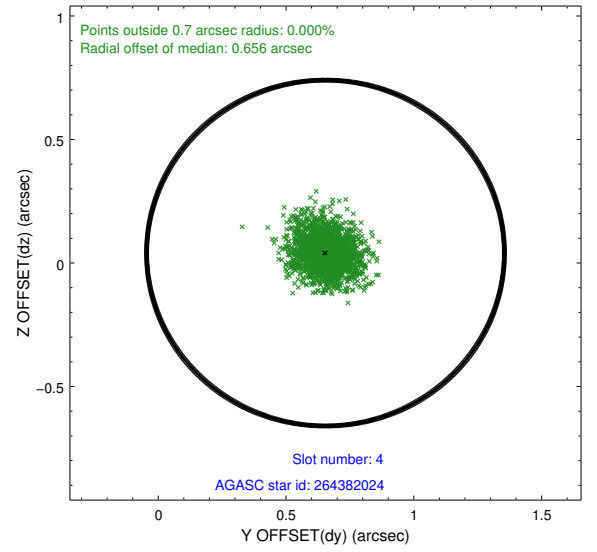
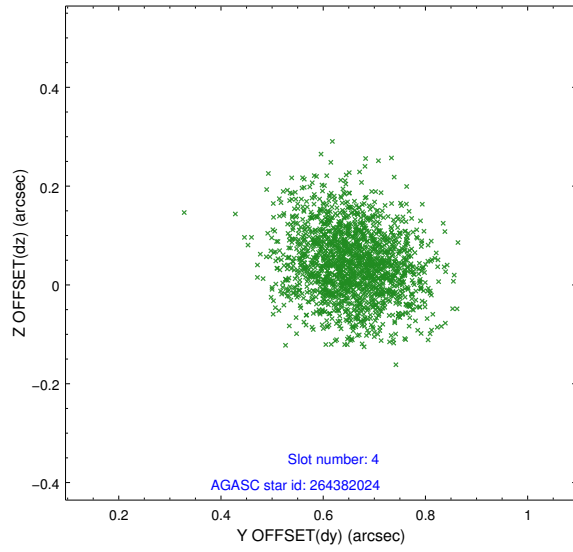
slot	status	id	mag	n_pts	med_dy	med_dz	dr1	dr2	ra	dec	mean_y	mean_z
0	FID	ACIS-I-2	7.15	864	-0.040	-0.075	0.008	0.014	0.000000	0.000000	-756.47	-836.10
1	FID	ACIS-I-4	7.18	864	-0.007	0.050	0.006	0.010	0.000000	0.000000	2156.81	1069.33
2	FID	ACIS-I-5	7.23	863	-0.054	0.093	0.009	0.014	0.000000	0.000000	-1808.02	1069.22
3	GUIDE	264373392	8.25	1729	-0.188	0.060	0.051	0.085	225.756327	23.989456	-2054.27	1053.97
4	GUIDE	264382024	9.82	1725	0.654	0.040	0.107	0.169	224.948680	23.453000	468.20	-1055.20
5	GUIDE	264382040	10.04	1727	-0.009	0.060	0.127	0.204	225.258856	23.774838	-903.20	-344.86
6	GUIDE	264372808	10.16	1728	-0.006	0.051	0.131	0.210	225.995639	23.578198	-815.48	2184.30
7	GUIDE	264378264	7.40	1726	-0.449	-0.206	0.074	0.113	224.702047	24.169737	-1841.38	-2464.09

2.4 Star Slots

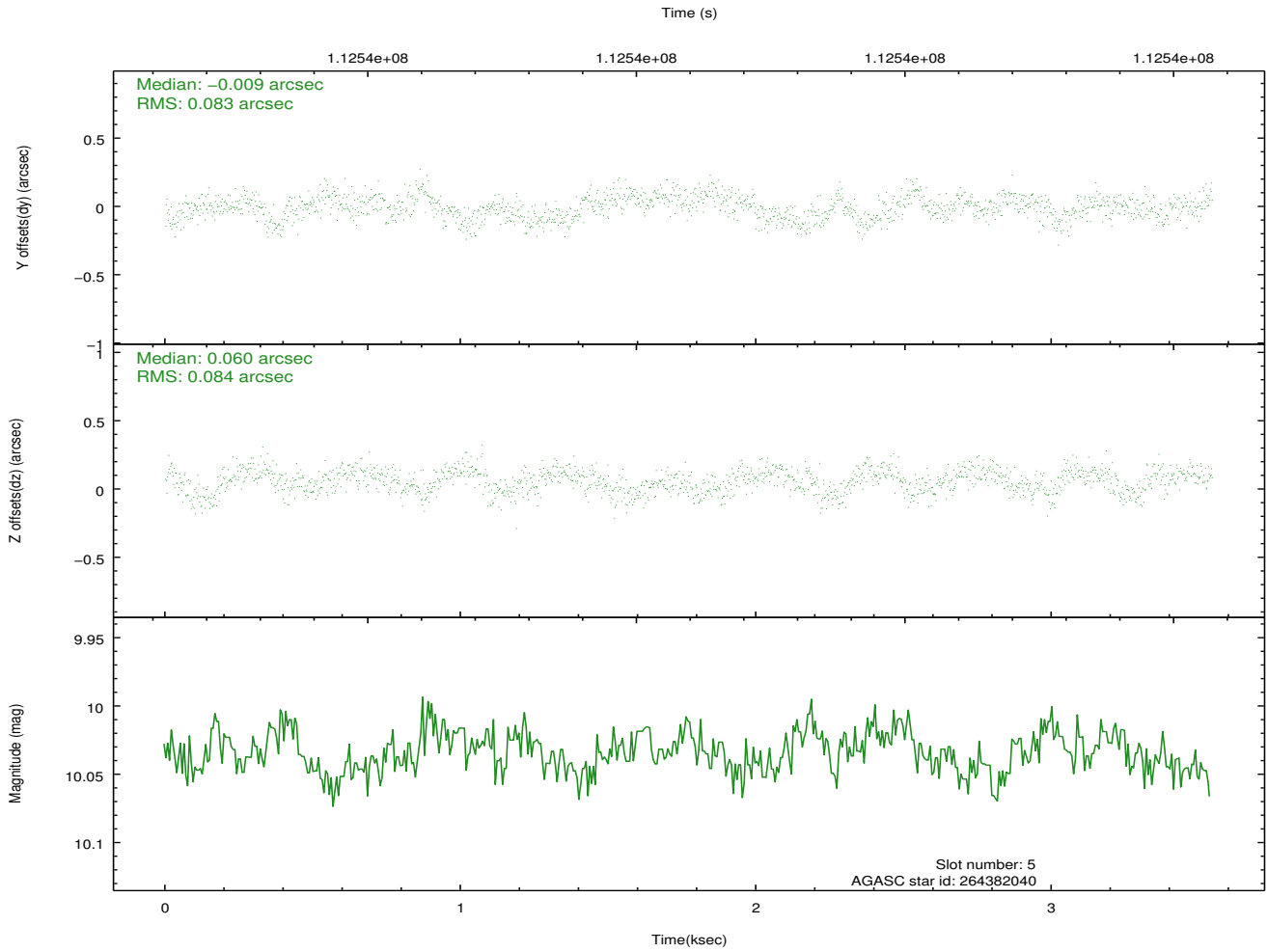
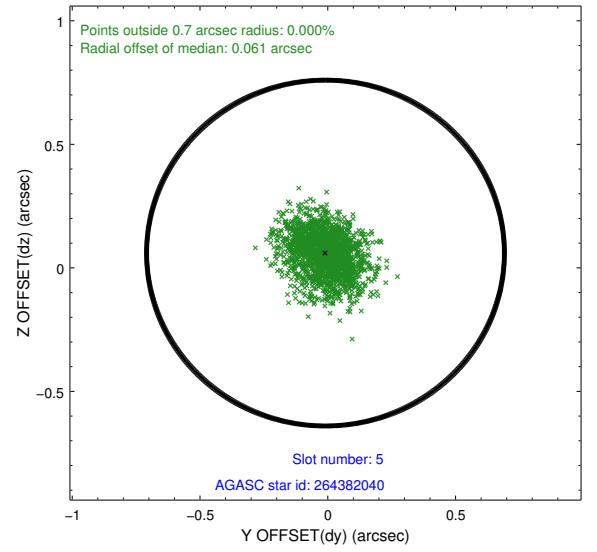
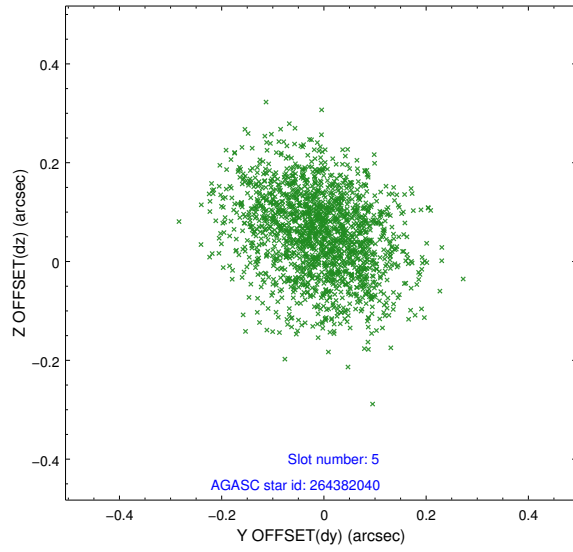
2.4.1 Slot 3



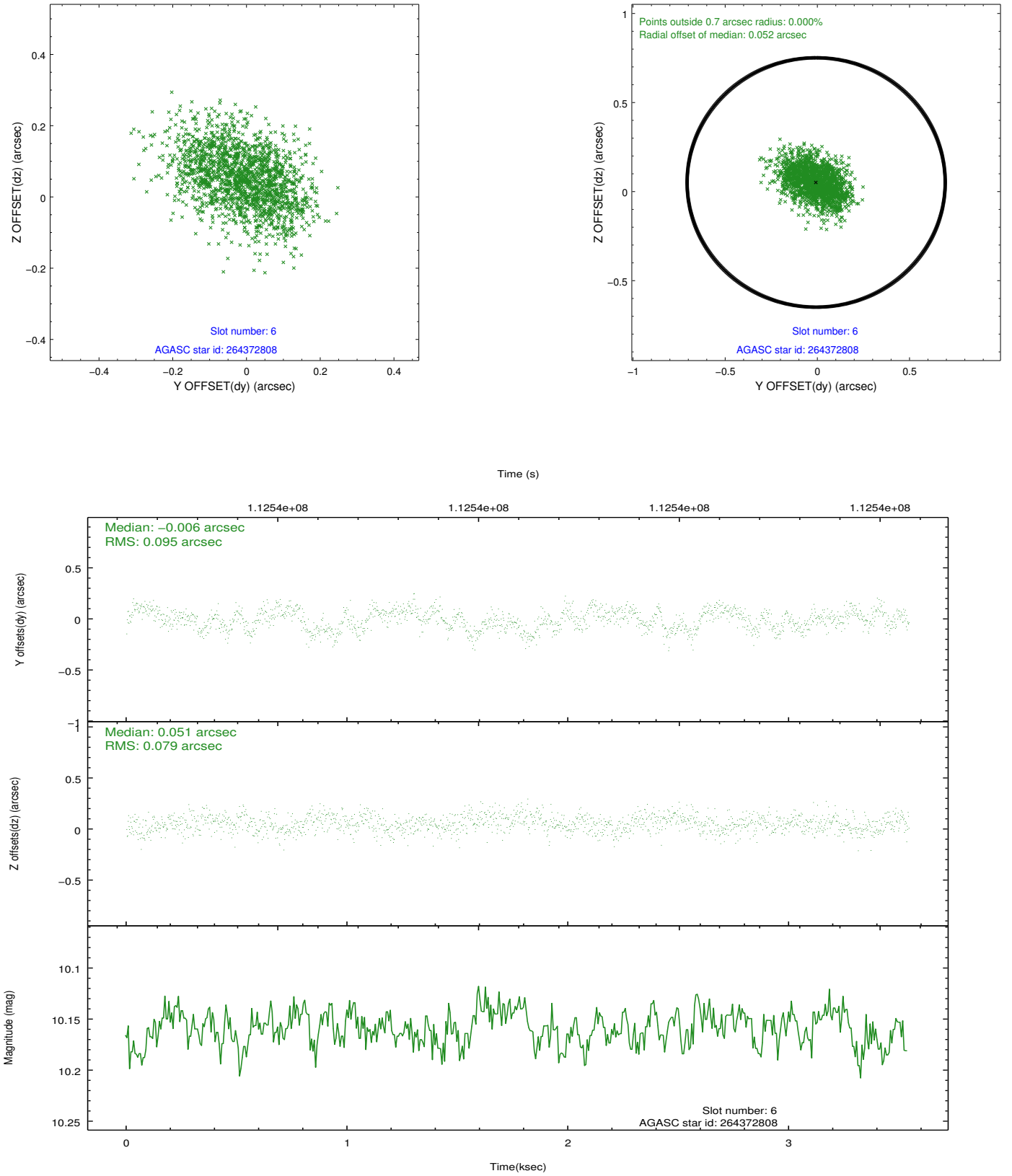
2.4.2 Slot 4



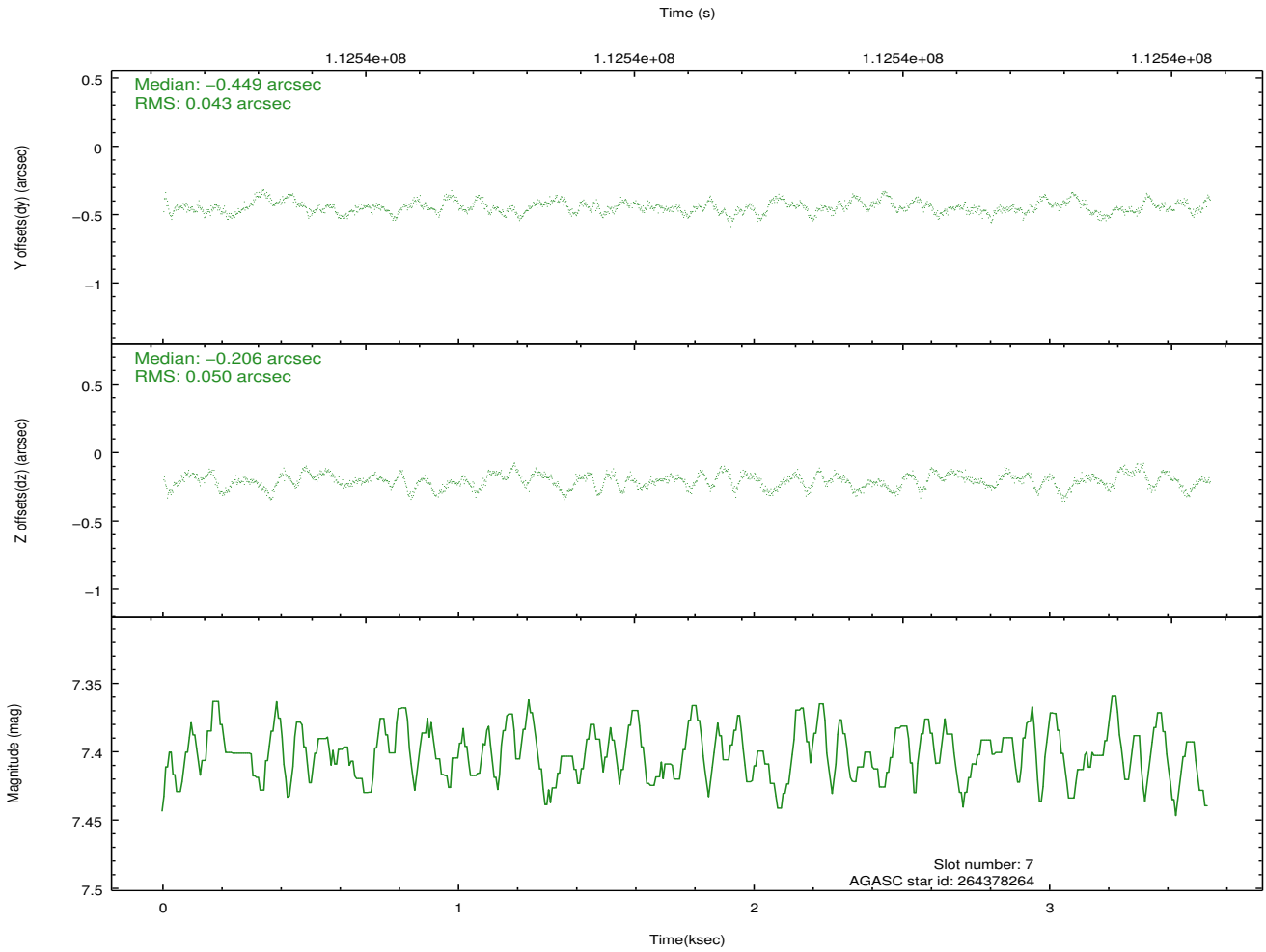
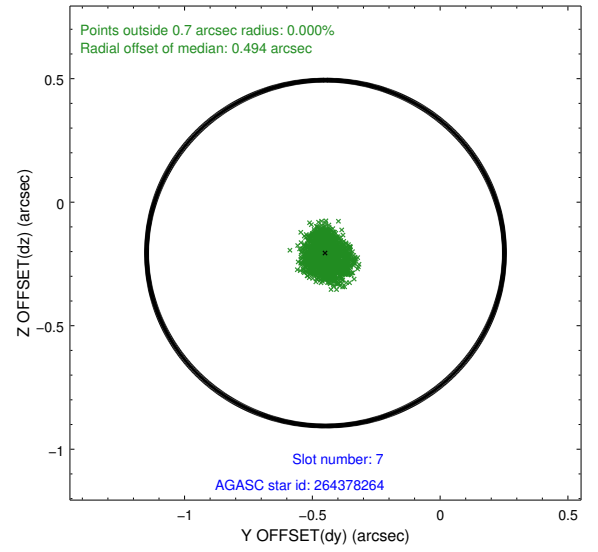
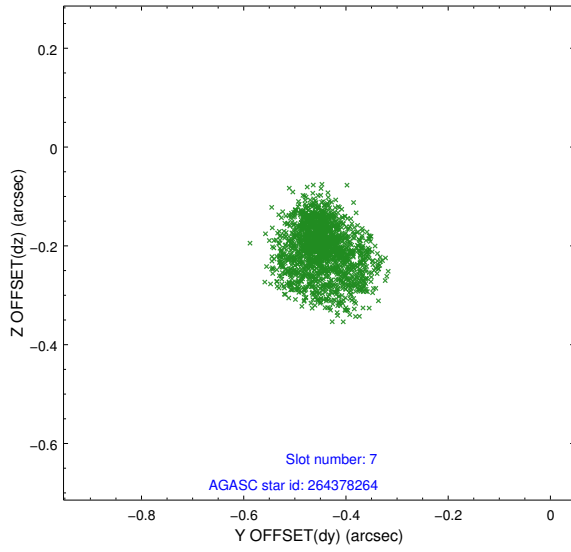
2.4.3 Slot 5



2.4.4 Slot 6

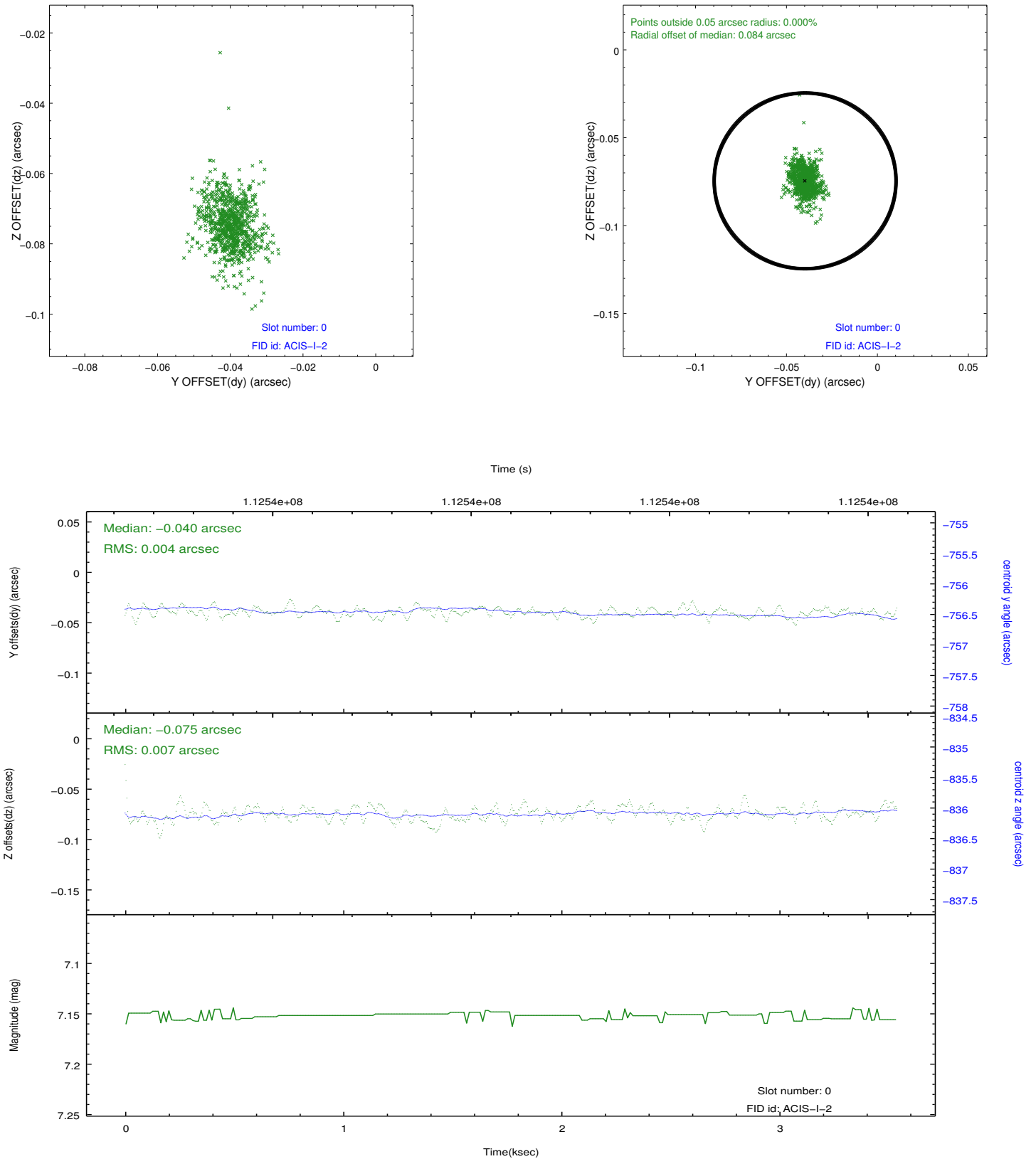


2.4.5 Slot 7

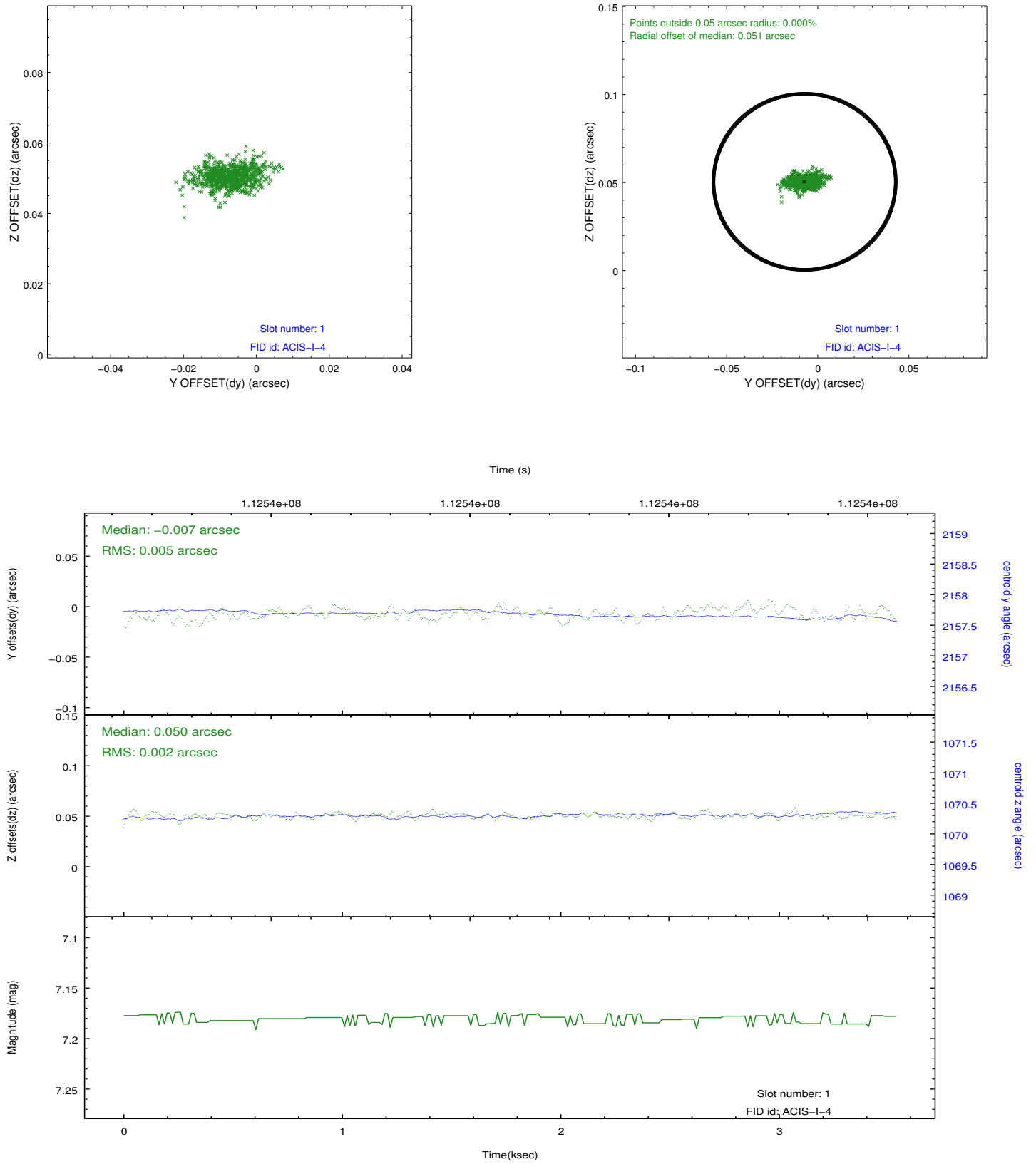


2.5 FID Slots

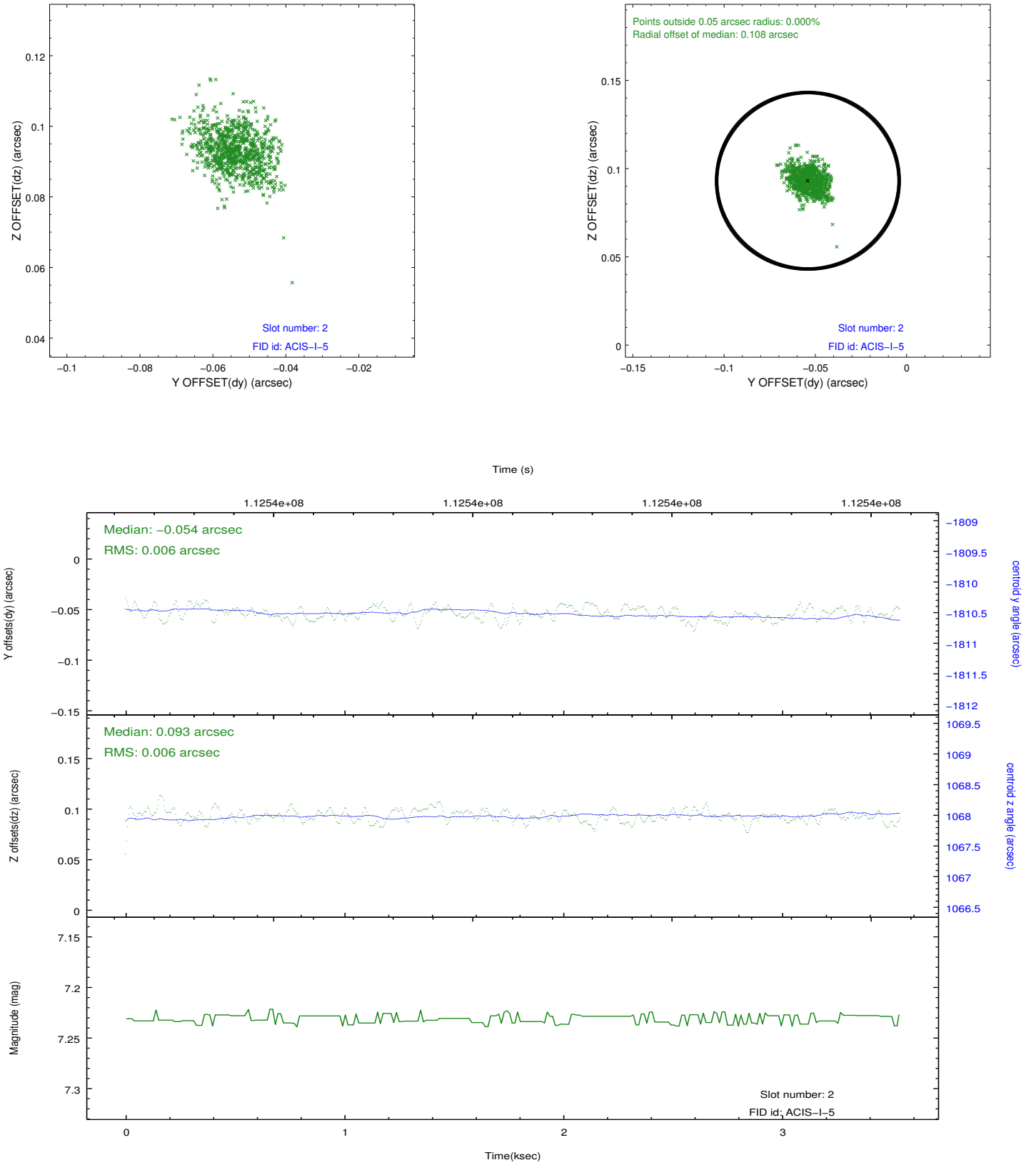
2.5.1 Slot 0



2.5.2 Slot 1



2.5.3 Slot 2



A Summary

A.1 Status

V&V Scientist	Jen Lauer
V&V Date (YYYY-MM-DD)	2012.09.24
V&V Edition	1
V&V Disposition and Status	OK
V&V Charge Time	3.5

A.2 Comments

Charge time for this ObsId remains at previous value of 3.5 ks although with the current processing the charge time would have been 3.54 ksec.