

# V&V Reference Report

## L2 ASCDS Version : 7.6.9

Observation 2167 - L2 Version 001  
Chandra X-Ray Center

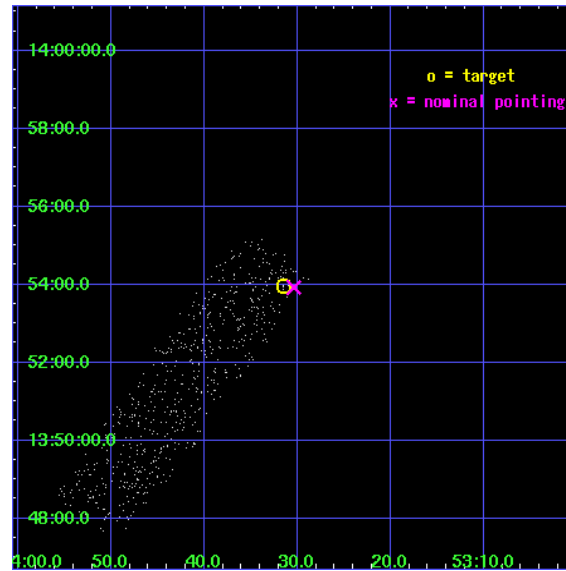
L2 Processing Date : Nov 24 2006

## Contents

<b>1</b>	<b>Front</b>	<b>2</b>
<b>2</b>	<b>OBI</b>	<b>3</b>
2.1	OBI . . . . .	3
2.1.1	Images . . . . .	3
2.1.2	Bias . . . . .	3
2.1.3	Parameters . . . . .	4
2.1.4	Events . . . . .	4
2.2	Compared Parameters . . . . .	5
2.3	Aspect . . . . .	6
2.4	Star Slots . . . . .	9
2.4.1	Slot 3 . . . . .	9
2.4.2	Slot 4 . . . . .	10
2.4.3	Slot 5 . . . . .	11
2.4.4	Slot 6 . . . . .	12
2.4.5	Slot 7 . . . . .	13
2.5	FID Slots . . . . .	14
2.5.1	Slot 0 . . . . .	14
2.5.2	Slot 1 . . . . .	15
2.5.3	Slot 2 . . . . .	16
<b>3</b>	<b>Point Sources</b>	<b>17</b>
<b>A</b>	<b>Summary</b>	<b>18</b>
A.1	Status . . . . .	18
A.2	Comments . . . . .	18

# 1 Front

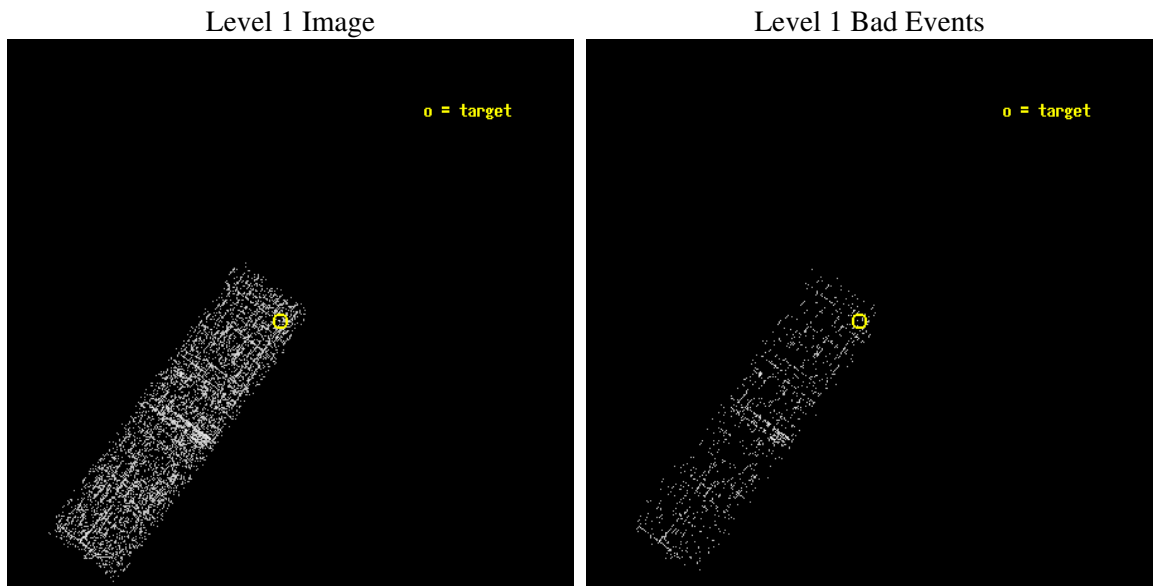
seq_num	700357
obs_id	2167
title	RED QUASARS AND THE X-RAY BACKGROUND
observer	Dr. BELINDA WILKES
object	2MASSJ145331+1353
dtcycle	0
cycle	P
ra_targ	223.38125
dec_targ	13.899639
ra_nom	223.37661284427
dec_nom	13.898691333141
roll_nom	216.31485171085
revision	2
ontime	3316.799987644
livetime	3154.9510012784
ontime3	3316.799987644
l2events	611



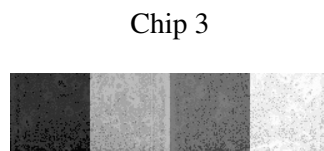
## 2 OBI

### 2.1 OBI

#### 2.1.1 Images



#### 2.1.2 Bias



### 2.1.3 Parameters

obi_num	0
ascdsver	7.6.9
caldbver	3.2.4
date	2006-11-25T03:34:27
revision	2

sched_exp_time	2500.000000
ontime	3318.7029792517
ontime3	3318.7029792517
l1events	7237

### 2.1.4 Events

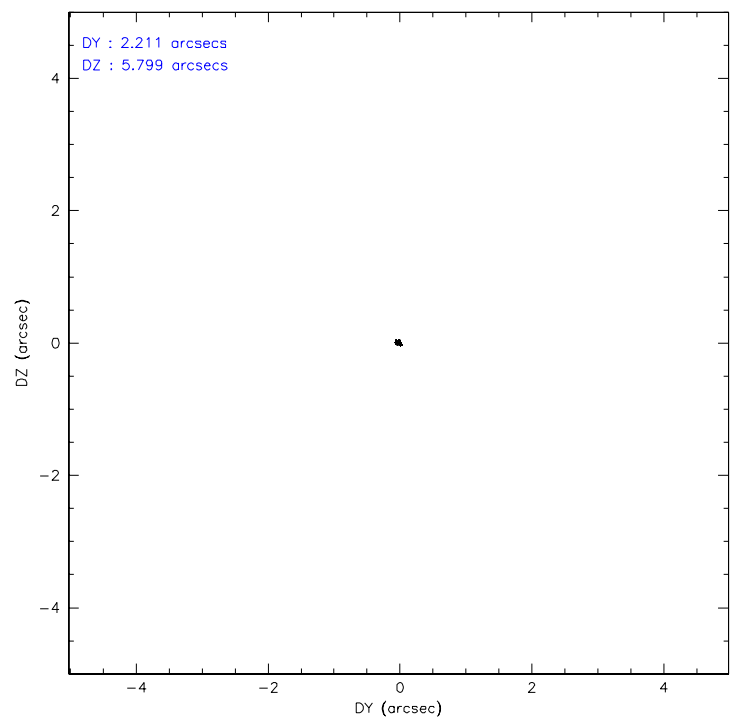
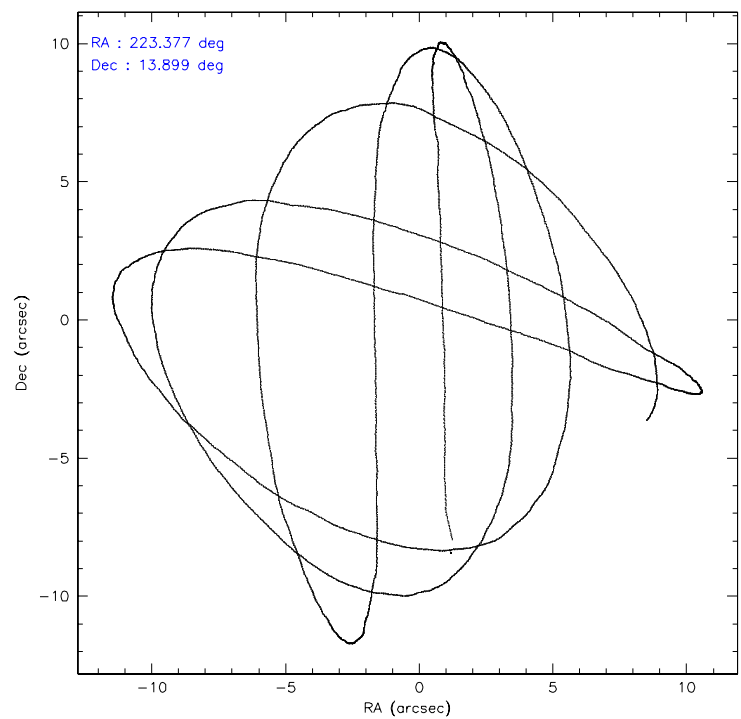
	<b>ccd 3</b>
level 1 events	7237
rejected events	6496
rejected %	89%

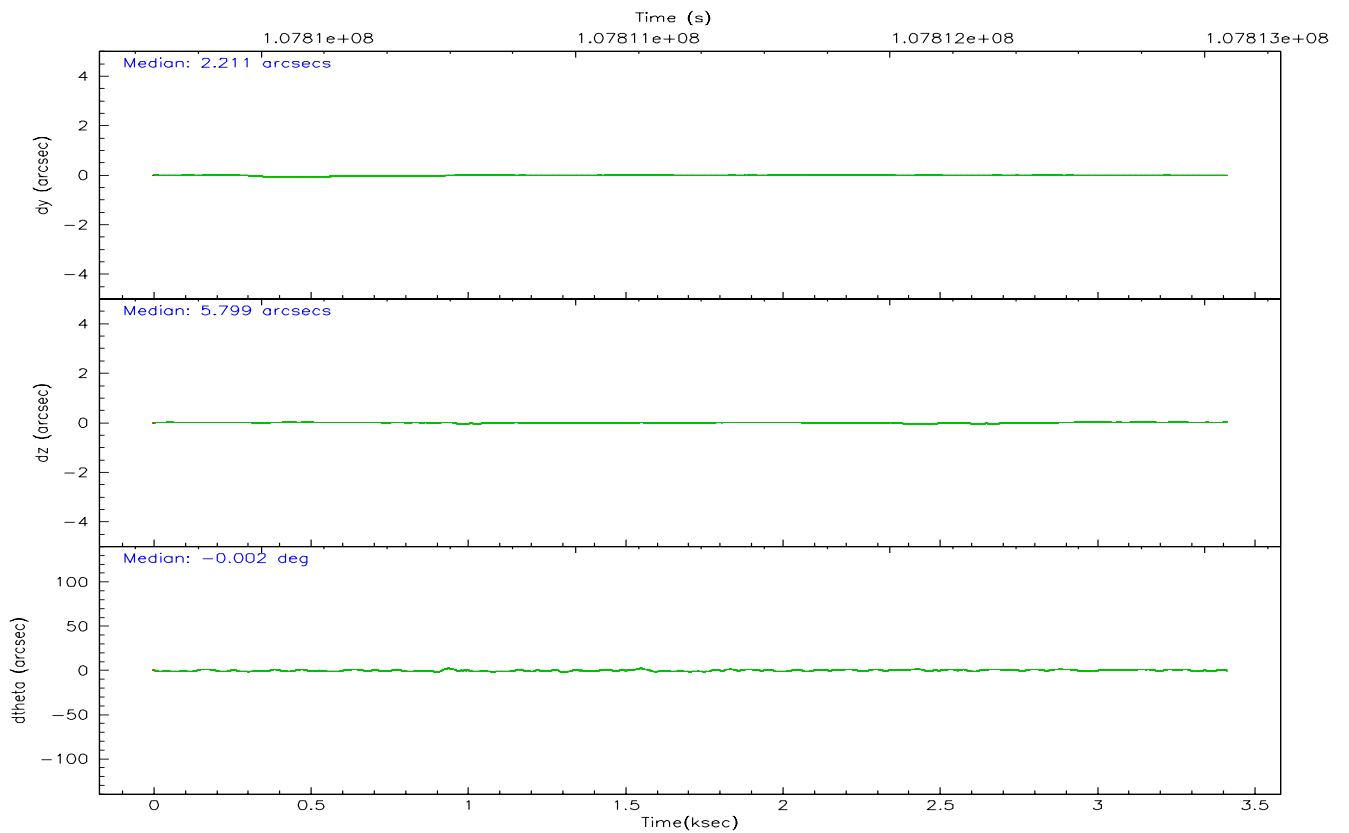
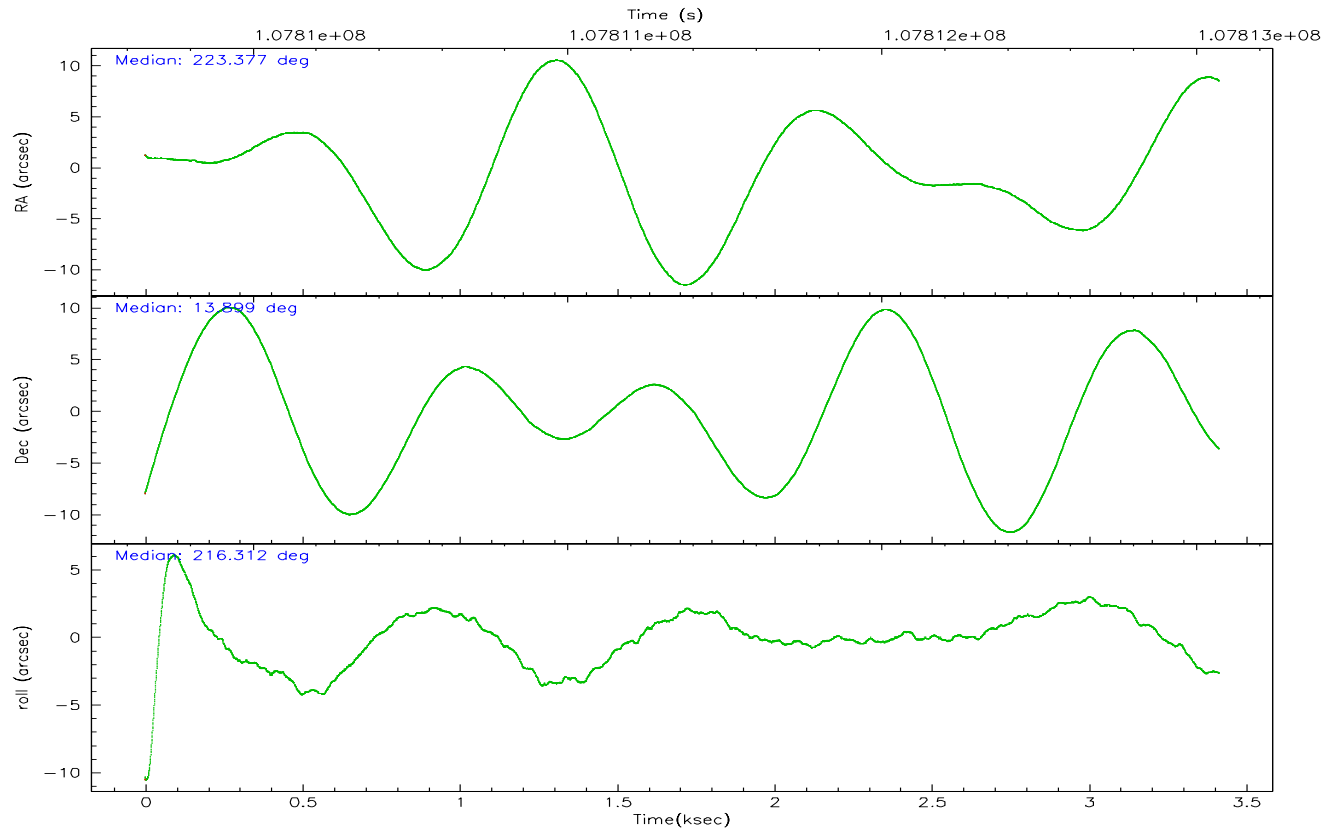
	<b>ccd 3</b>
grade 0 events	287
	3%
grade 1 events	1
	0%
grade 2 events	102
	1%
grade 3 events	106
	1%
grade 4 events	108
	1%
grade 5 events	193
	2%
grade 6 events	140
	1%
grade 7 events	6300
	87%

## 2.2 Compared Parameters

Parameter	Planned	Actual	Parameter	Planned	Actual
Instrument	ACIS	ACIS	Obspar format version number	6	6
Detector	ACIS-3	ACIS-3	Obspar file type	PREDICTED	ACTUAL
Grating	NONE	NONE	Obspar update status	NONE	UPDATED
Data mode	VFAINT	VFAINT	Number of optional ACIS chips dropped	0	0
Observation mode	POINTING	POINTING	On-chip summing requested	N	N
Pointing RA	223.387829	223.3766128442662	Subarray requested	1/4	1/4
Pointing Dec	13.923684	13.89869133314097	Subarray start row	0	769
Pointing Roll	216.103532	216.3148517108546	Subarray row count	1024	256
SIM focus pos (mm)	-0.782348	-0.7809083437167272	Alternating exposures requested	N	N
SIM defocus (mm)	0	0.001439871863259334	Primary exposure time	0.000000	0.8
SIM translation stage pos (mm)	-233.592463	-233.5874344608287			
SIM translation stage offset (mm)	0	-0.005018542100998502			
Observation start time	107810567.184000	107809247.53328			
Observation start date	2001-06-01T19:21:43	2001-06-01T19:00:47			
Observation end time	107813067.184000	107814079.38347			
Observation end date	2001-06-01T20:03:23	2001-06-01T20:21:19			
Read mode	TIMED	TIMED			

## 2.3 Aspect





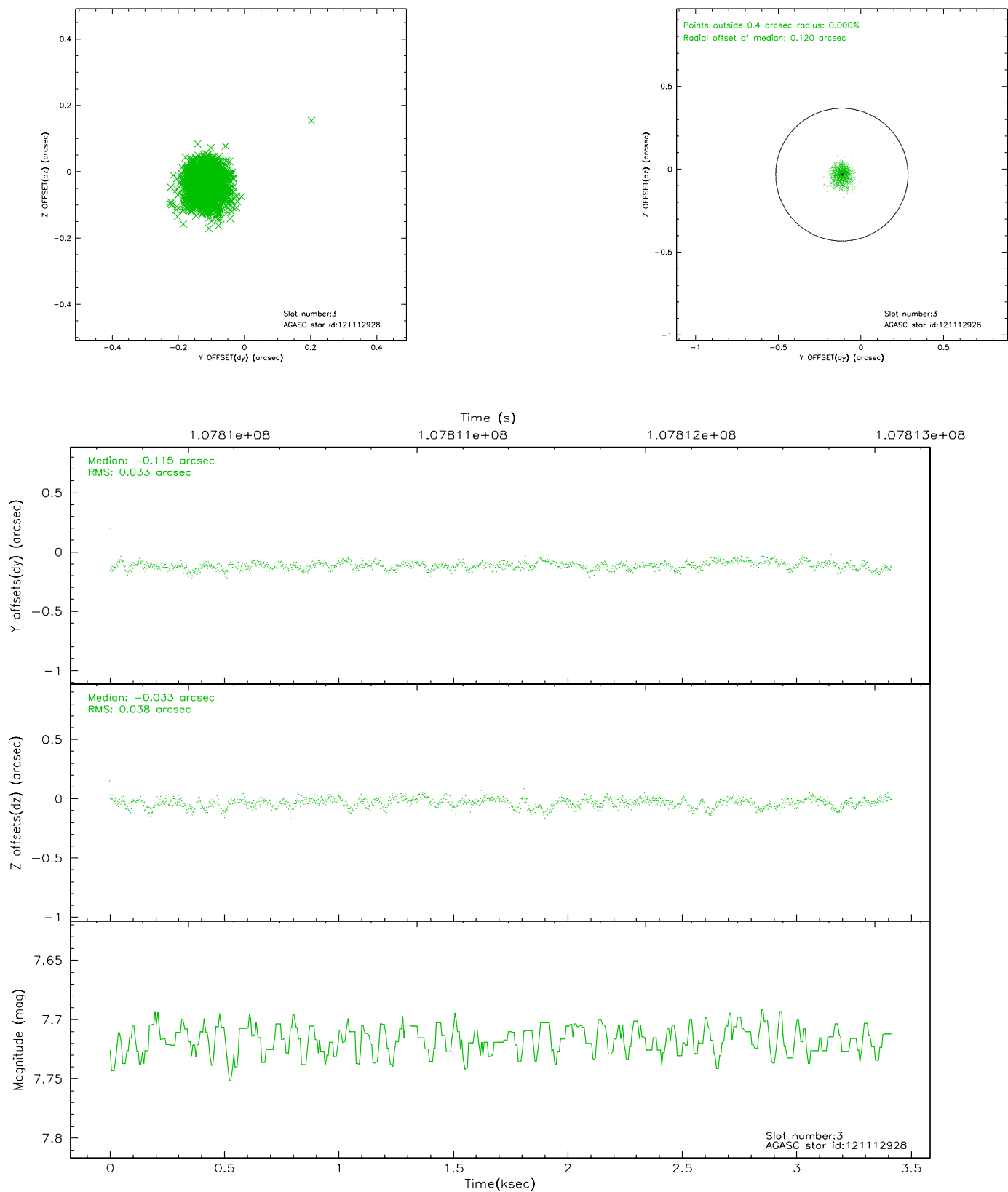
### Slot Statistics

slot	status	id	mag	n_pts	med_dy	med_dz	dr1	dr2	ra	dec	mean_y	mean_z
0	FID	ACIS-I-2	7.15	834	-0.018	-0.029	0.012	0.020	0.000000	0.000000	-756.57	-835.56
1	FID	ACIS-I-4	7.18	834	-0.065	0.027	0.012	0.023	0.000000	0.000000	2156.59	1069.76
2	FID	ACIS-I-5	7.23	834	-0.019	0.071	0.011	0.017	0.000000	0.000000	-1808.03	1069.74
3	GUIDE	121112928	7.72	1667	-0.115	-0.033	0.053	0.086	223.069811	14.491275	-306.93	-2304.57
4	GUIDE	121114400	7.73	1667	-0.059	-0.023	0.060	0.101	222.885358	13.477561	2368.32	258.58
5	GUIDE	121113392	8.86	1666	0.121	0.108	0.068	0.111	222.842707	13.692888	2032.27	-453.42
6	GUIDE	121119856	9.15	1666	0.042	0.001	0.069	0.113	223.187249	13.961512	489.04	-523.12
7	GUIDE	121120928	9.70	1665	0.017	-0.051	0.094	0.156	223.157370	14.079299	322.13	-927.24

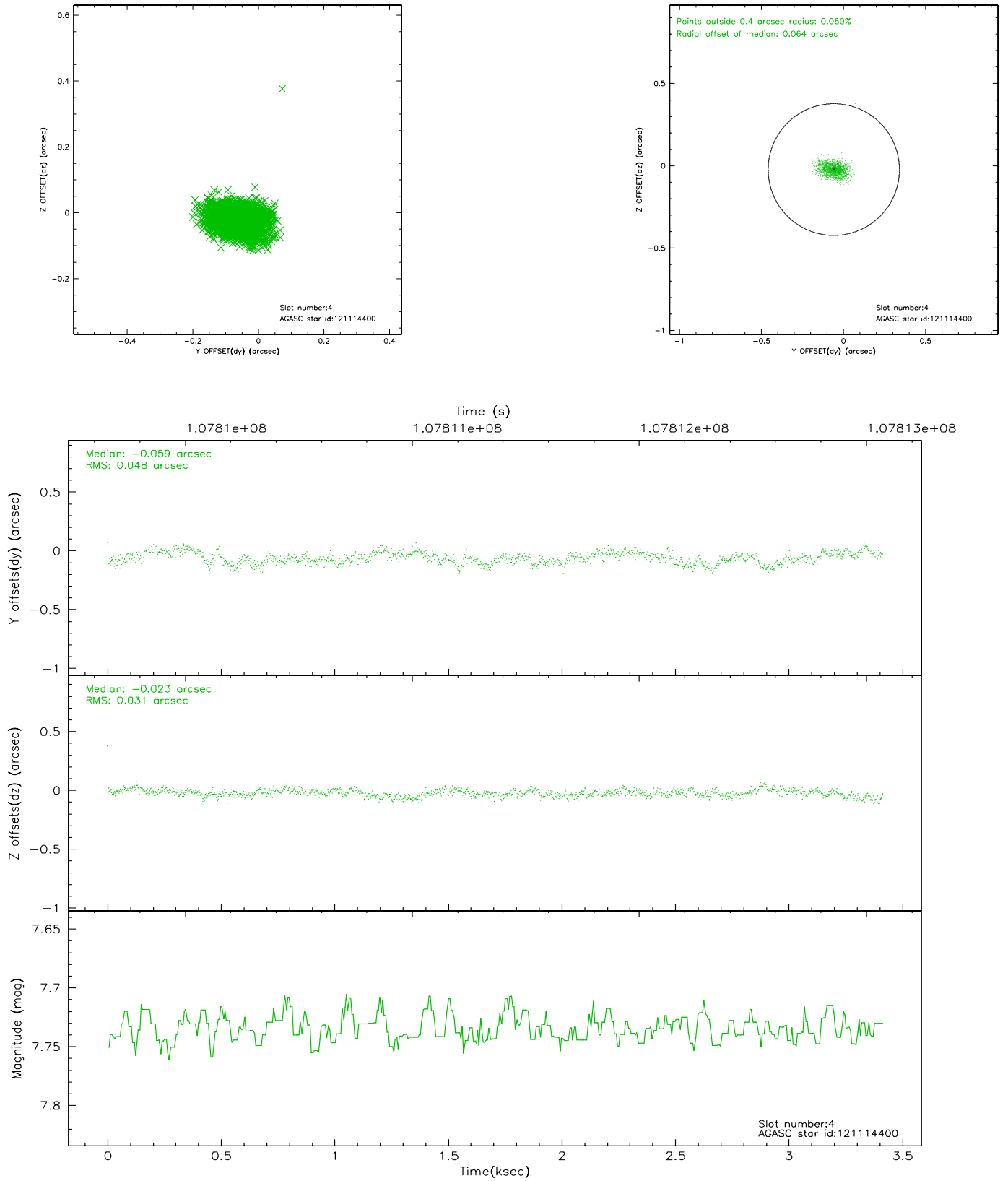


## 2.4 Star Slots

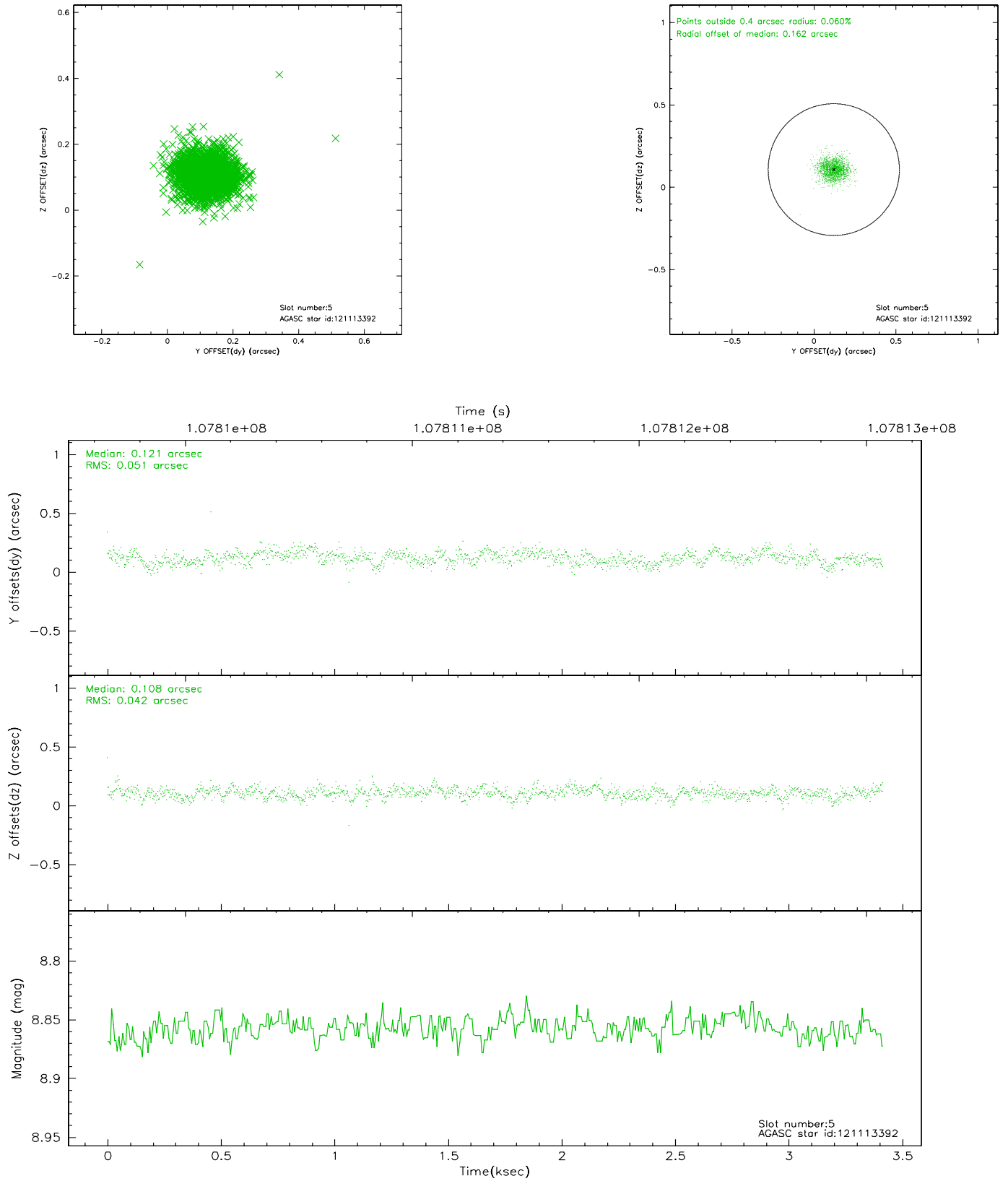
### 2.4.1 Slot 3



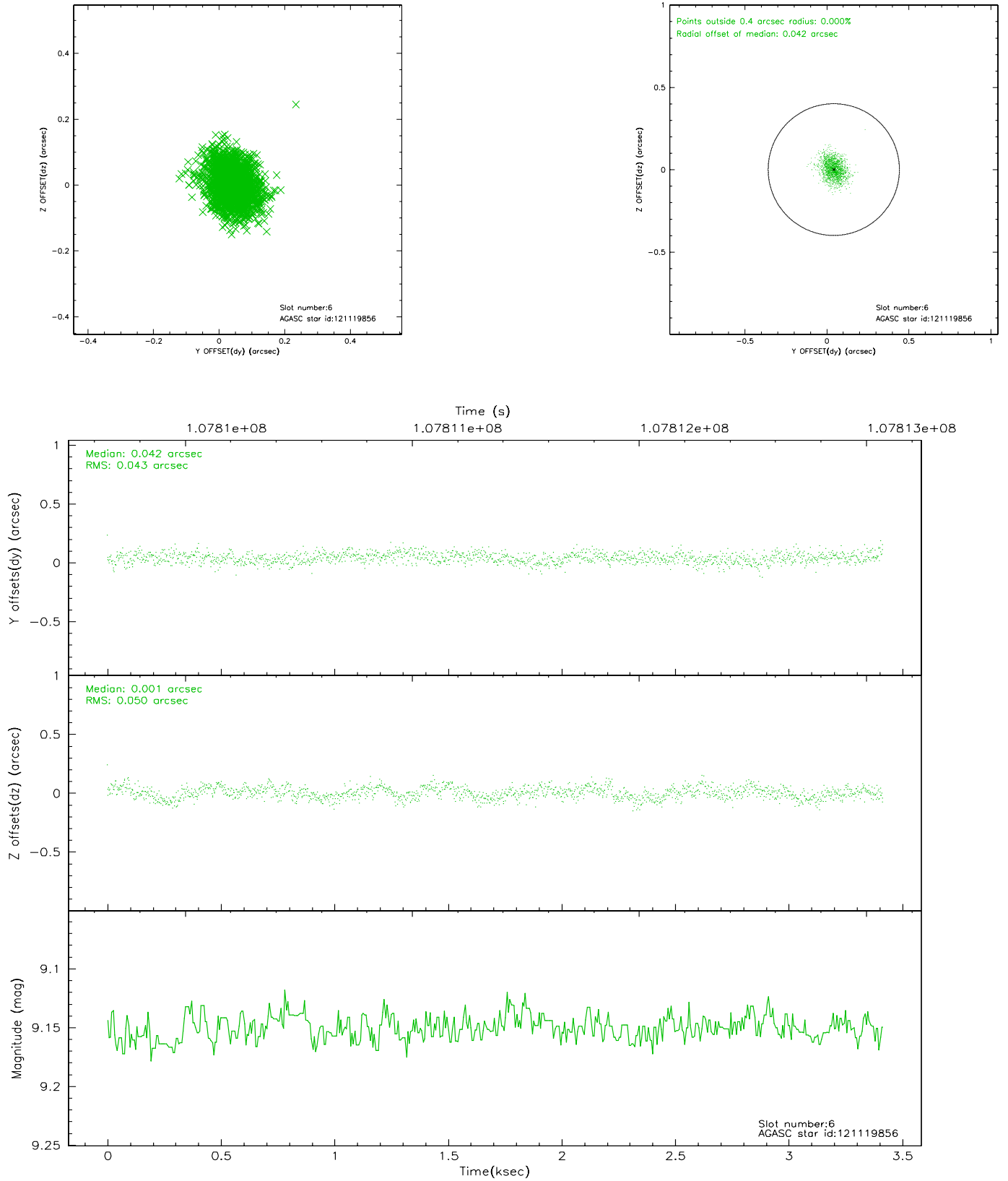
## 2.4.2 Slot 4



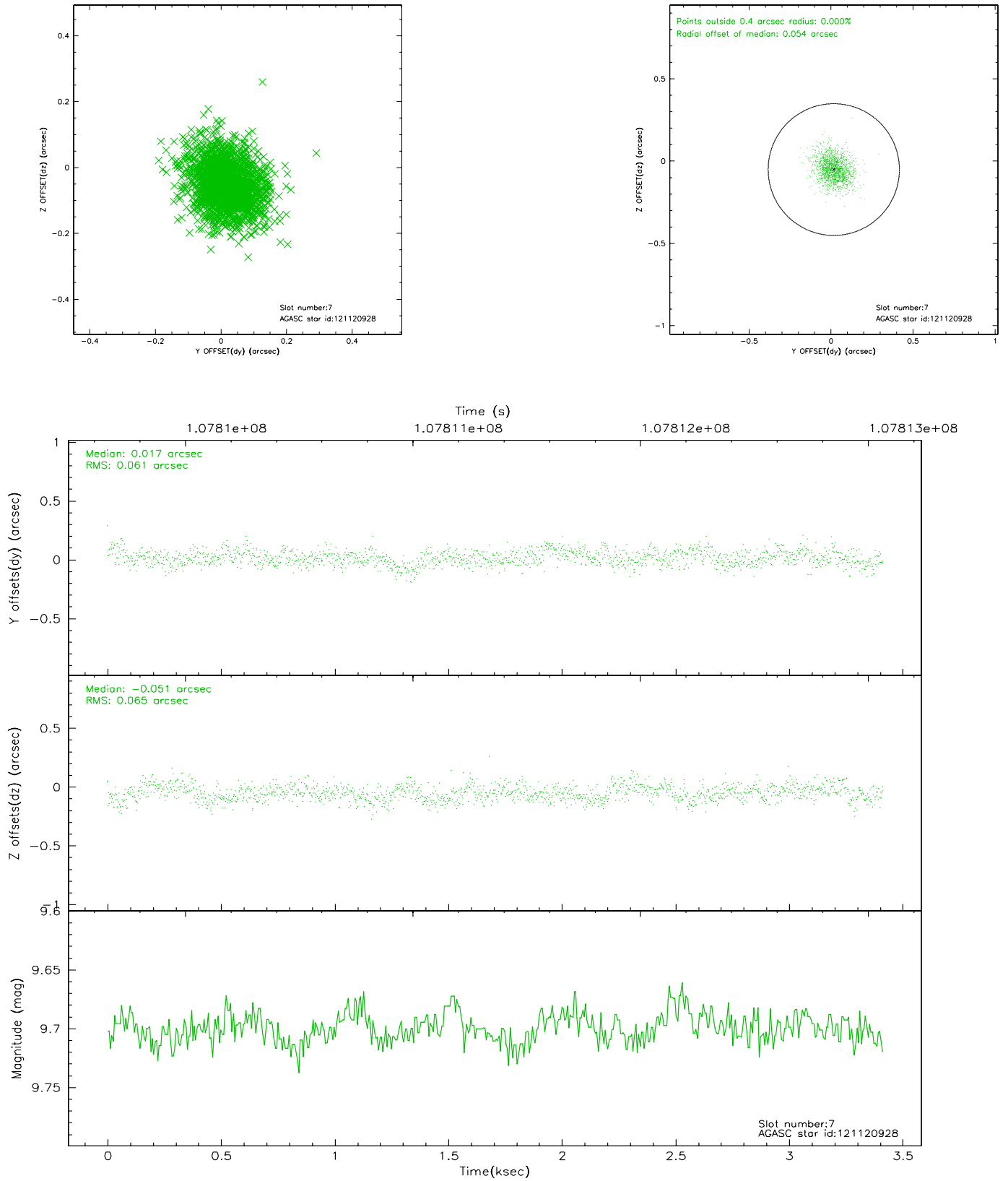
### 2.4.3 Slot 5



## 2.4.4 Slot 6

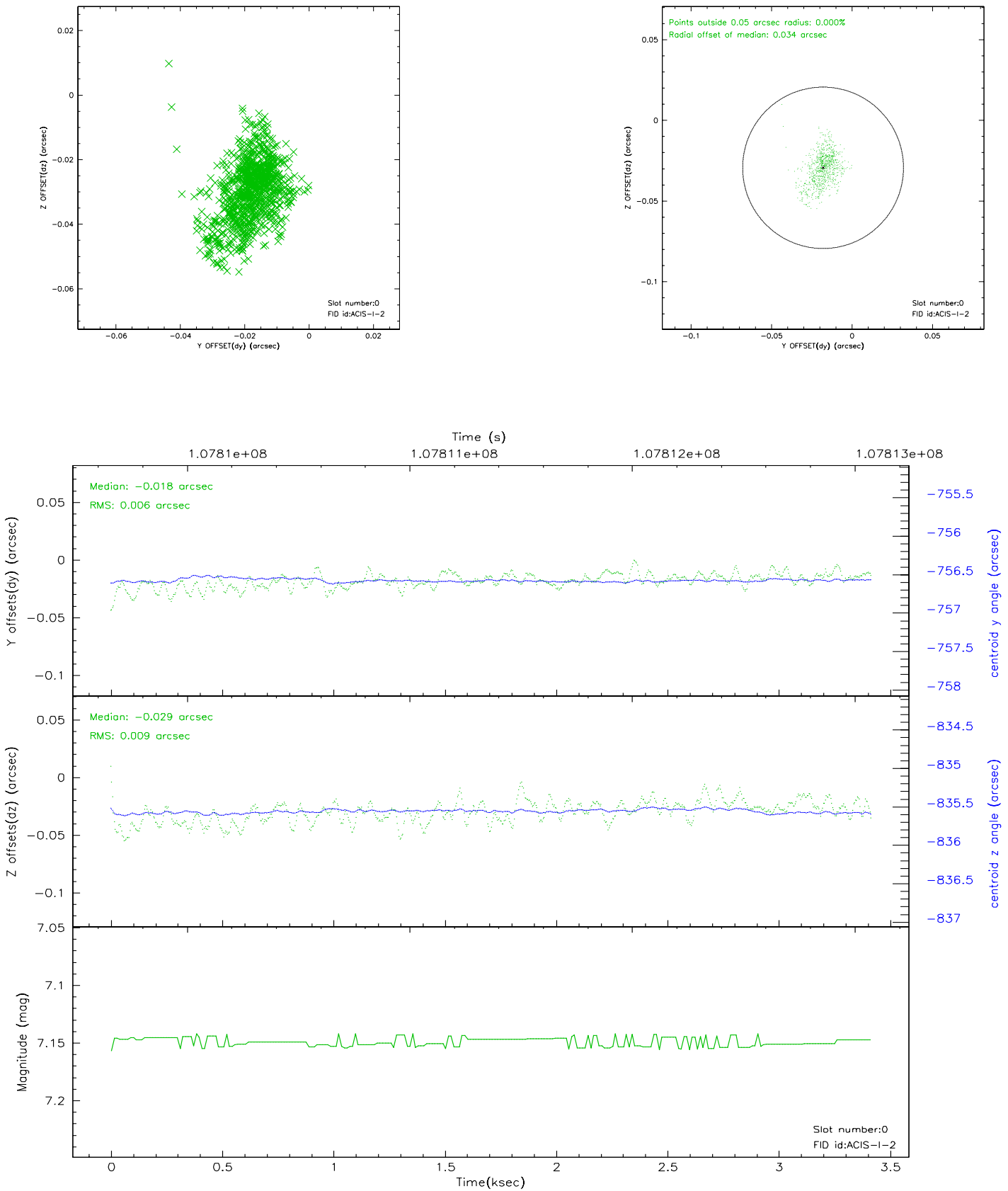


## 2.4.5 Slot 7

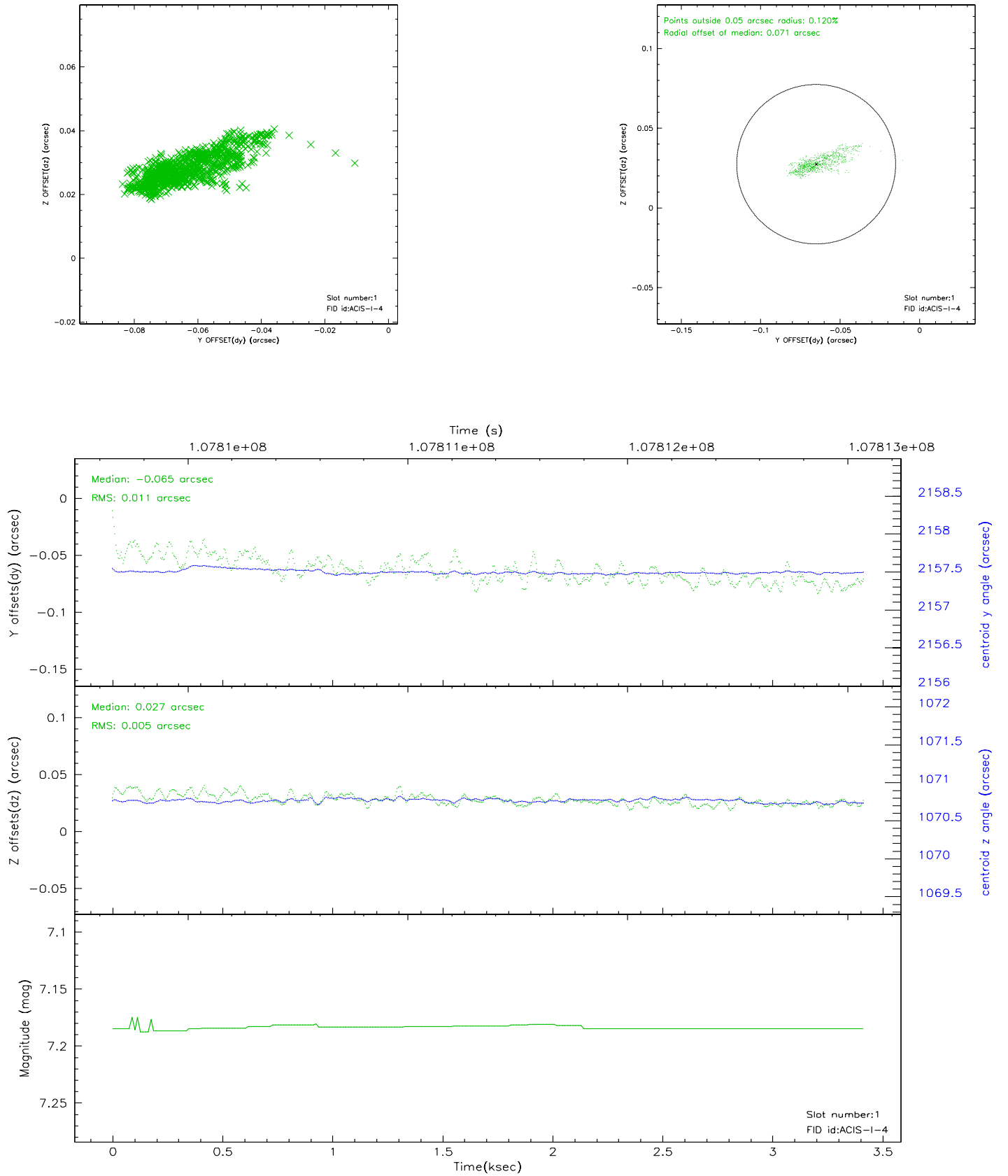


## 2.5 FID Slots

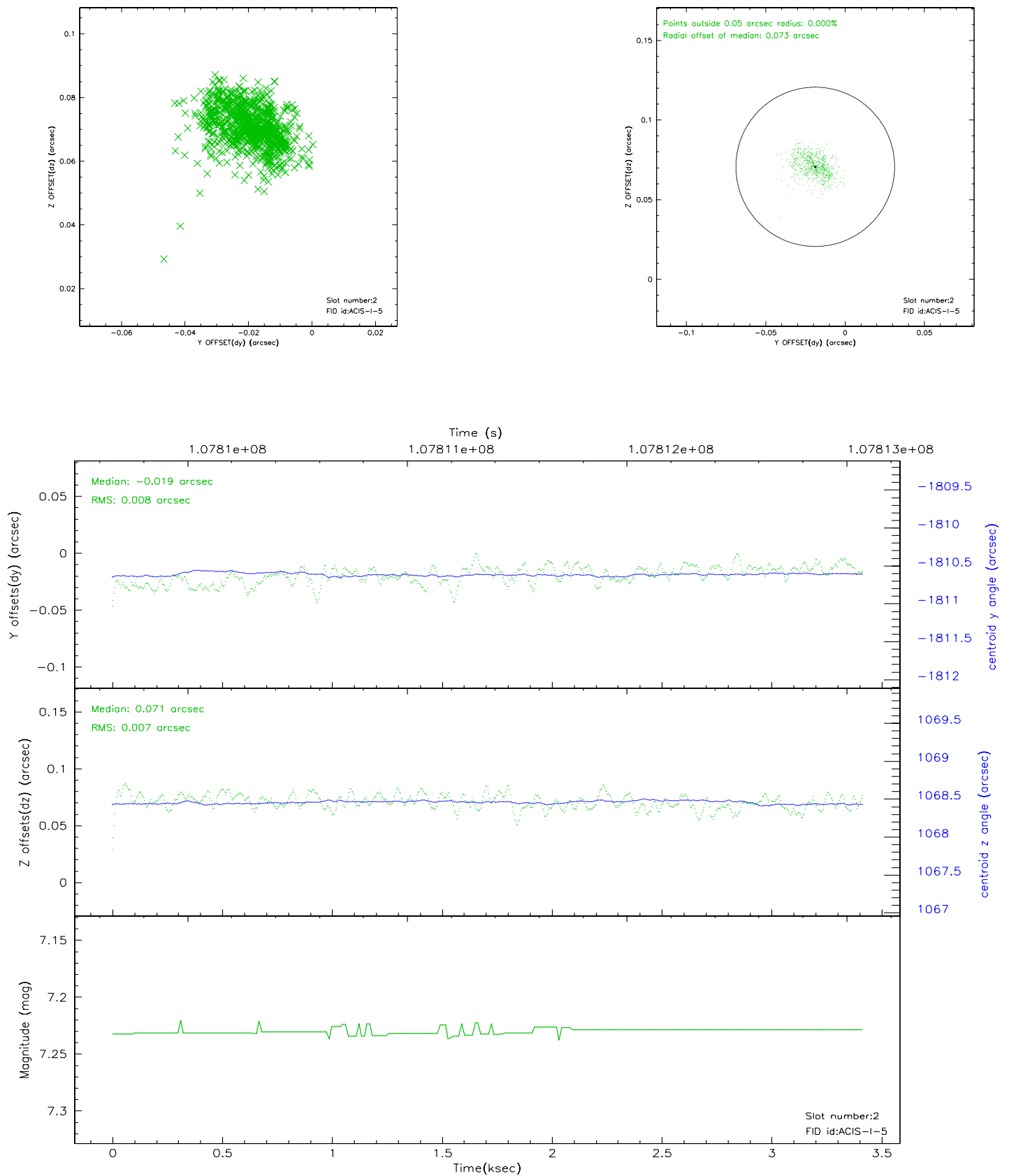
### 2.5.1 Slot 0



## 2.5.2 Slot 1



## 2.5.3 Slot 2





### 3 Point Sources

## A Summary

### A.1 Status

V&V Scientist	Jen Lauer
V&V Date (YYYY-MM-DD)	2006.11.27
V&V Edition	1
V&V Disposition and Status	OK
V&V Charge Time	3.317

### A.2 Comments