

V&V Reference Report

L2 ASCDS Version : 8.4.5

Observation 2158 - L2 Version 3
Chandra X-Ray Center

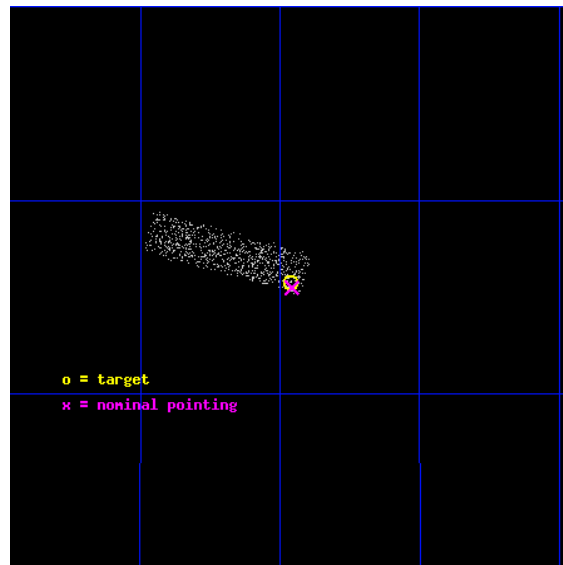
L2 Processing Date : Sep 7 2012

Contents

1	Front	2
2	OBI	3
2.1	OBI	3
2.1.1	Images	3
2.1.2	Bias	3
2.1.3	Parameters	4
2.1.4	Events	4
2.2	Compared Parameters	5
2.3	Aspect	6
2.4	Star Slots	9
2.4.1	Slot 3	9
2.4.2	Slot 4	10
2.4.3	Slot 5	11
2.4.4	Slot 6	12
2.4.5	Slot 7	13
2.5	FID Slots	14
2.5.1	Slot 0	14
2.5.2	Slot 1	15
2.5.3	Slot 2	16
A	Summary	17
A.1	Status	17
A.2	Comments	17

1 Front

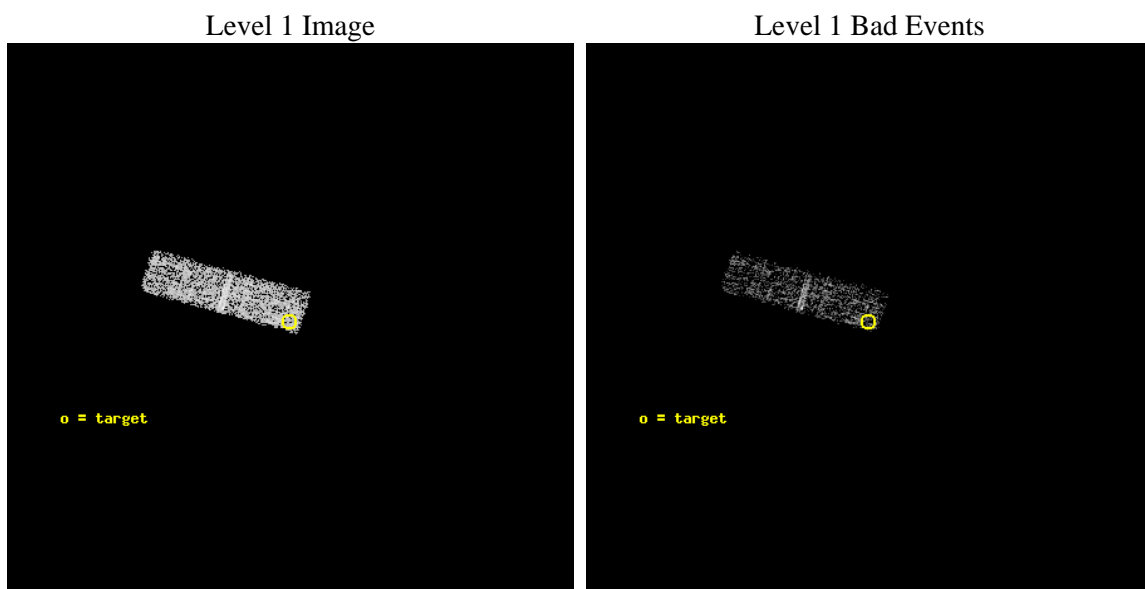
seq_num	700348	Sequence number
obs_id	2158	Observation id
title	RED QUASARS AND THE X-RAY BACKGROUND	Proposal title
observer	Dr. Belinda Wilkes	Principal investigator
object	2MASSJ034857+1255	Source name
dtcycle	0	
cycle	P	events from which exps? Prim/Second/Both
ra_targ	57.24	Observer's specified target RA [deg]
dec_targ	12.929806	Observer's specified target Dec [deg]
ra_nom	57.239422976245	Nominal RA [deg]
dec_nom	12.924978169647	Nominal Dec [deg]
roll_nom	285.55806457294	Nominal Roll [deg]
revision	3	Processing version of data
ontime	4847.1589718461	Sum of GTIs [s]
livetime	4610.6334745992	Livetime [s]
ontime3	4847.1589718461	Sum of GTIs [s]
l2events	828	Number of level 2 events



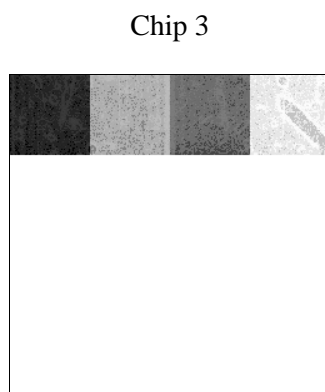
2 OBI

2.1 OBI

2.1.1 Images



2.1.2 Bias



2.1.3 Parameters

obi_num	0	Obi number	sched_exp_time	4700.000000	[s] Scheduled observation exposure time
ascdsver	8.4.5	Processing system revision	ontime	4847.1589718461	Sum of GTIs [s]
caldsver	4.5.1.1	 	ontime3	4847.1589718461	Sum of GTIs [s]
date	2012-09-07T03:41:05	Date and time of file creation	l1events	22154	Number of level 1 events
revision	3	Processing version of data			

2.1.4 Events

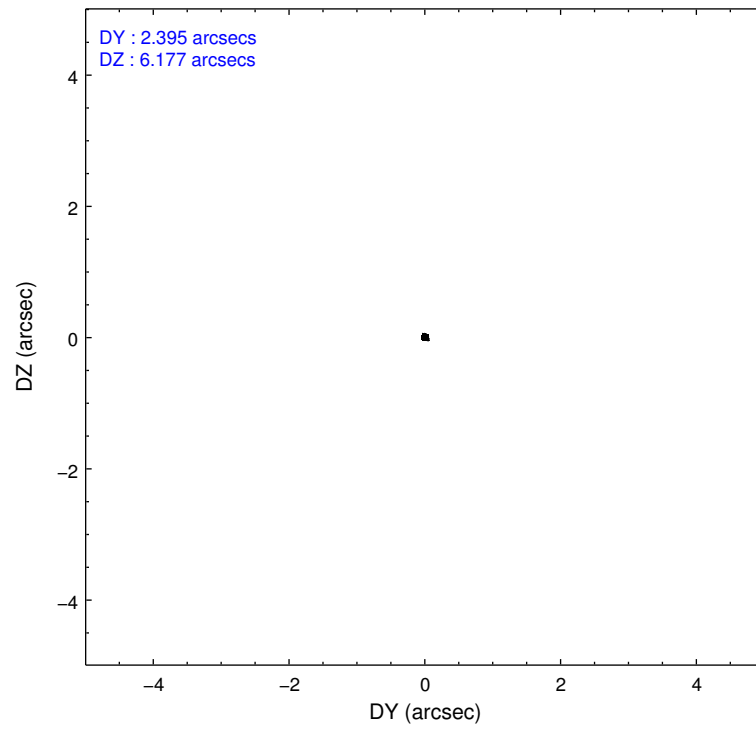
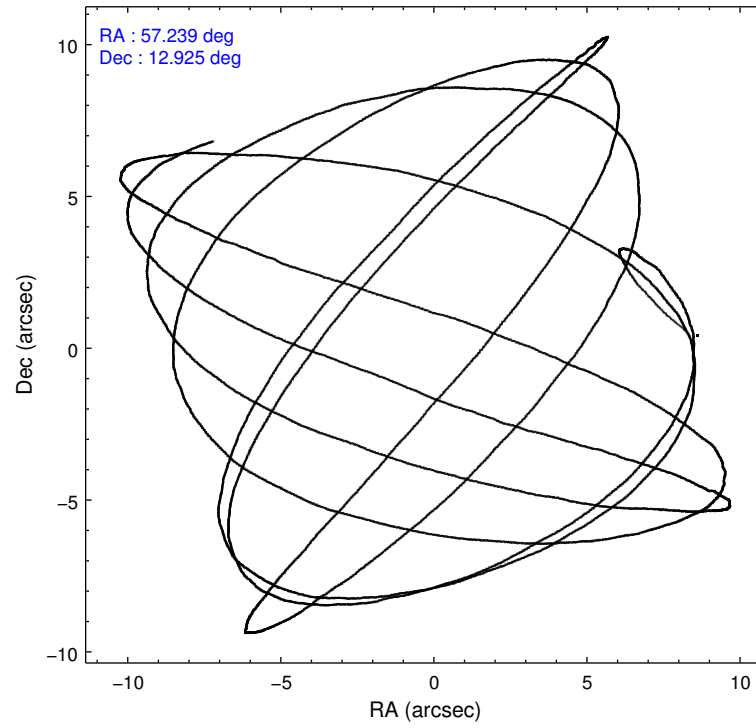
	ccd 3
level 1 events	22154
rejected events	21142
rejected %	95%

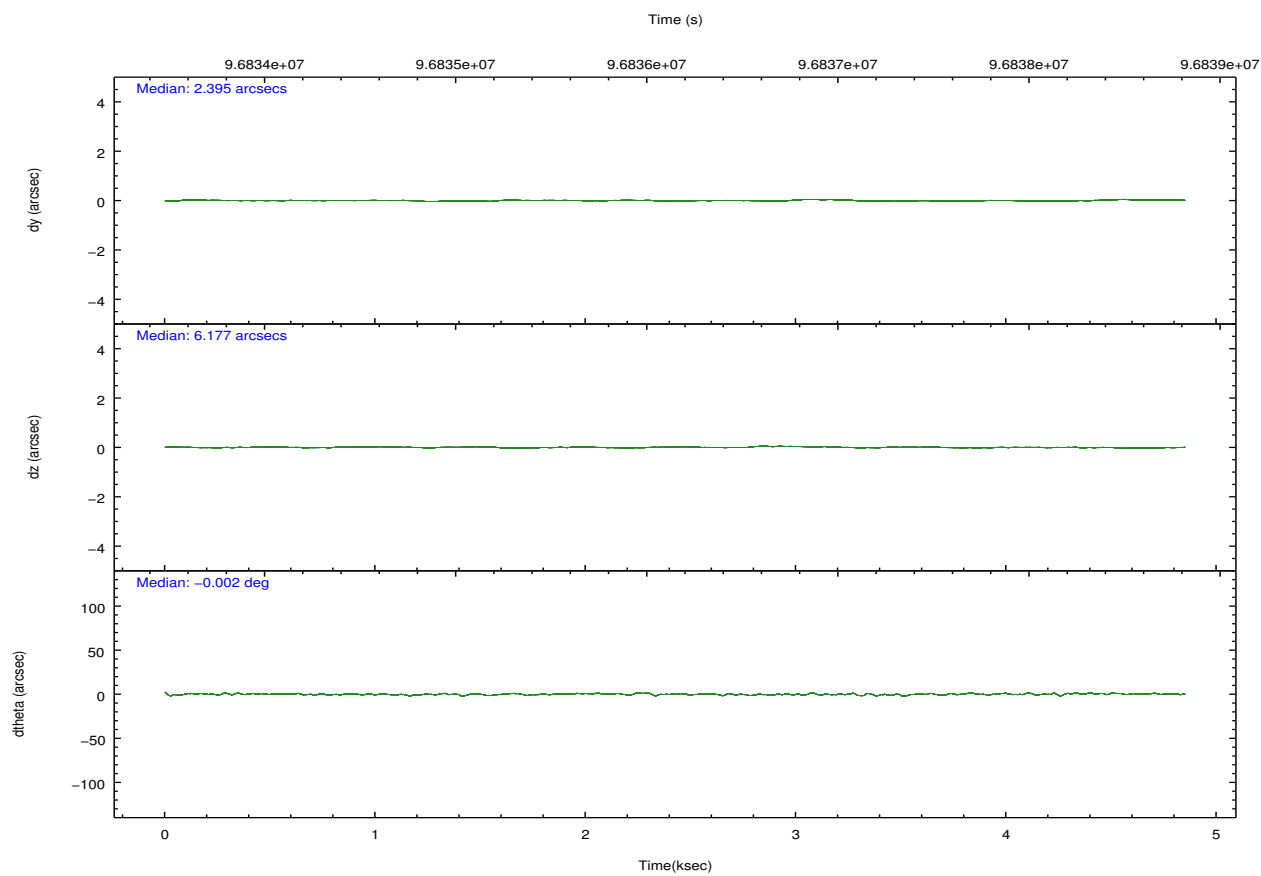
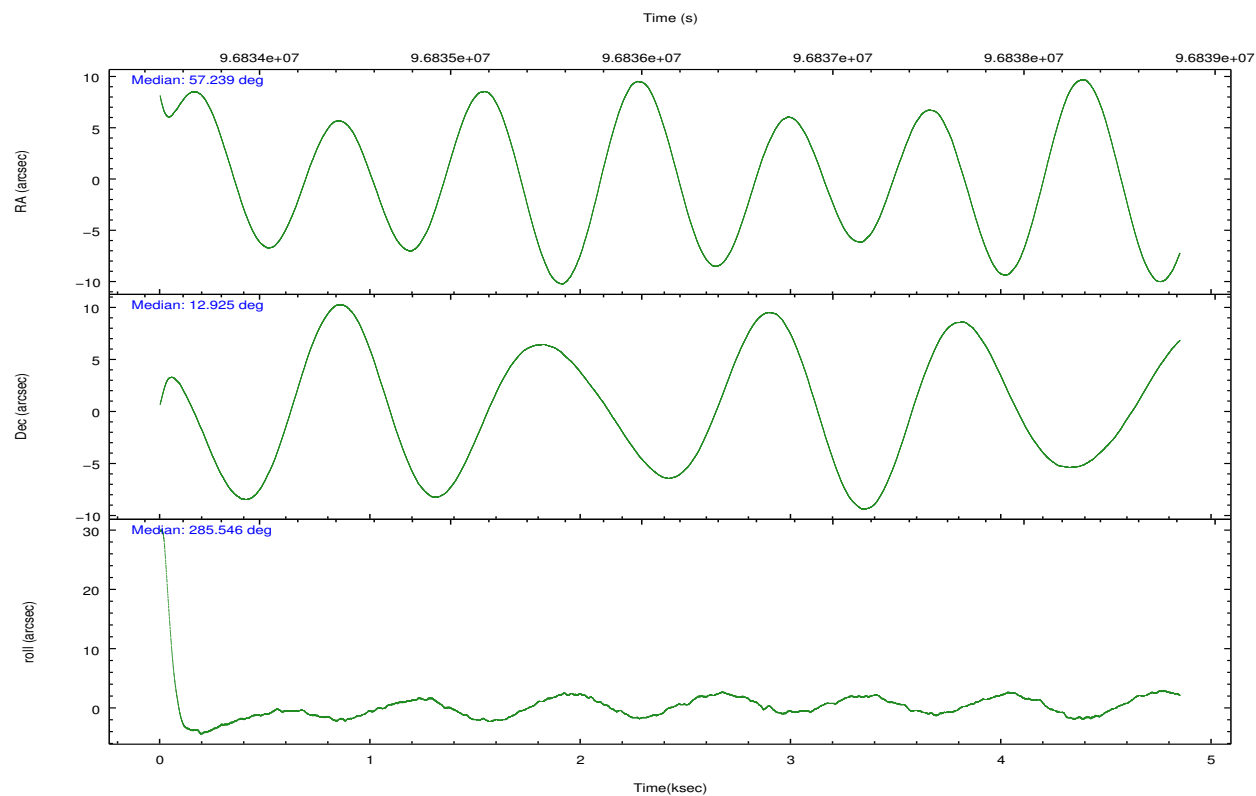
	ccd 3
grade 0 events	6248
	28%
grade 1 events	16
	0%
grade 2 events	1952
	8%
grade 3 events	792
	3%
grade 4 events	830
	3%
grade 5 events	364
	1%
grade 6 events	1505
	6%
grade 7 events	10447
	47%

2.2 Compared Parameters

Parameter	Planned	Actual	Parameter	Planned	Actual
Instrument	ACIS	ACIS	Obspar format version number	7	7
Detector	ACIS-3	ACIS-3	Obspar file type	PREDICTED	ACTUAL
Grating	NONE	NONE	Obspar update status	NONE	UPDATED
Data mode	VFAINT	VFAINT	Number of optional ACIS chips dropped	0	0
Observation mode	POINTING	POINTING	On-chip summing requested	N	N
[deg] Pointing RA	57.219241	57.23942297624509	Subarray requested	CUSTOM	1/4
[deg] Pointing Dec	12.944305	12.92497816964701	Subarray start row	769	769
[deg] Pointing Roll	285.353805	285.5580645729416	Subarray row count	256	256
[mm] SIM focus pos	-0.782348	-0.7809083437167272	Alternating exposures requested	N	N
[mm] SIM defocus	0	0.001439871863259334	[s] Primary exposure time	0.000000	0.8
[mm] SIM translation stage pos	-233.592463	-233.5874344608287			
[mm] SIM translation stage offset	0	-0.005018542100998502			
[s] Observation start time (MET)	96833872.184000	96832653.820859			
Observation start date	2001-01-25T18:16:48	2001-01-25T17:57:33			
[s] Observation end time (MET)	96838572.184000	96839032.39610501			
Observation end date	2001-01-25T19:35:08	2001-01-25T19:43:52			
Read mode	TIMED	TIMED			

2.3 Aspect



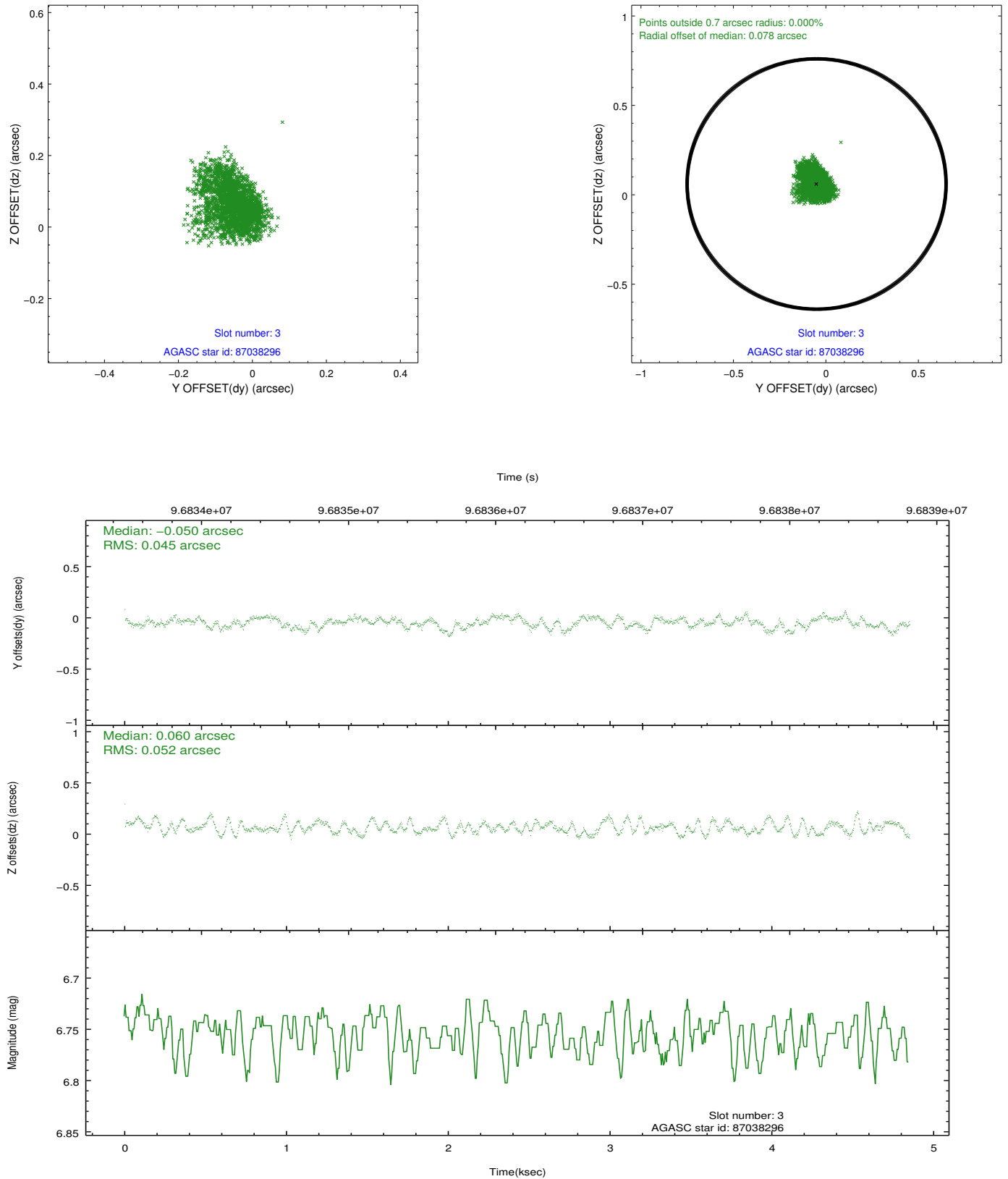


Slot Statistics

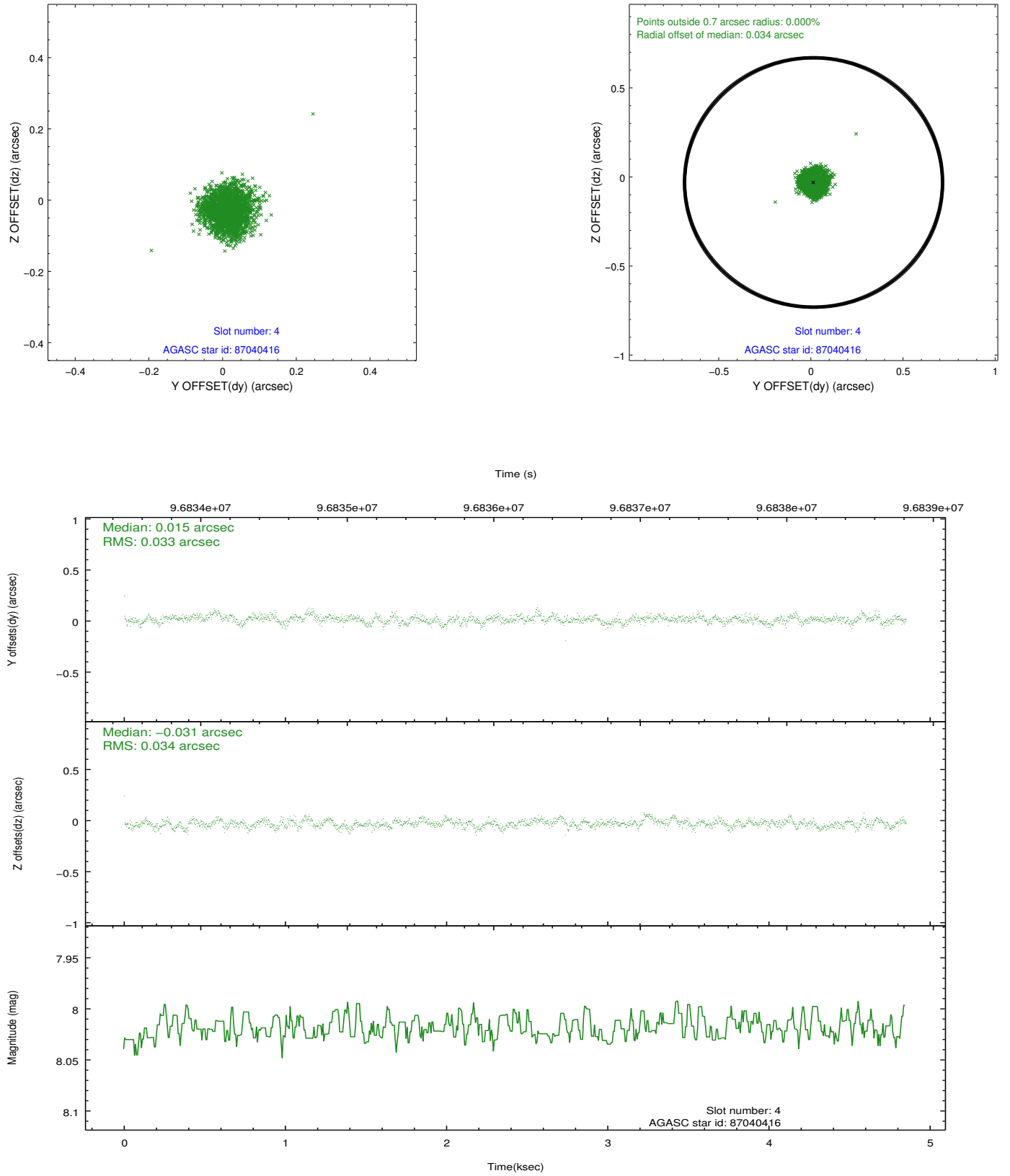
slot	status	id	mag	n_pts	med_dy	med_dz	dr1	dr2	ra	dec	mean_y	mean_z
0	FID	ACIS-I-2	7.15	1183	-0.029	-0.049	0.009	0.016	0.000000	0.000000	-756.79	-835.96
1	FID	ACIS-I-4	7.18	1183	-0.027	0.038	0.006	0.011	0.000000	0.000000	2156.71	1069.67
2	FID	ACIS-I-5	7.23	1183	-0.045	0.079	0.010	0.016	0.000000	0.000000	-1809.01	1069.00
3	GUIDE	87038296	6.75	2367	-0.050	0.060	0.072	0.117	57.816128	13.046075	198.95	2116.32
4	GUIDE	87040416	8.02	2367	0.015	-0.031	0.050	0.082	56.853073	12.508237	1173.49	-1655.39
5	GUIDE	87042128	8.28	2367	0.117	-0.057	0.046	0.074	57.435895	12.602989	1387.44	408.21
6	GUIDE	87034904	9.36	2367	0.034	0.028	0.077	0.130	57.418528	13.066751	-239.04	790.77
7	GUIDE	87038072	8.21	2366	-0.116	-0.004	0.051	0.082	57.320491	13.059354	-304.96	452.27

2.4 Star Slots

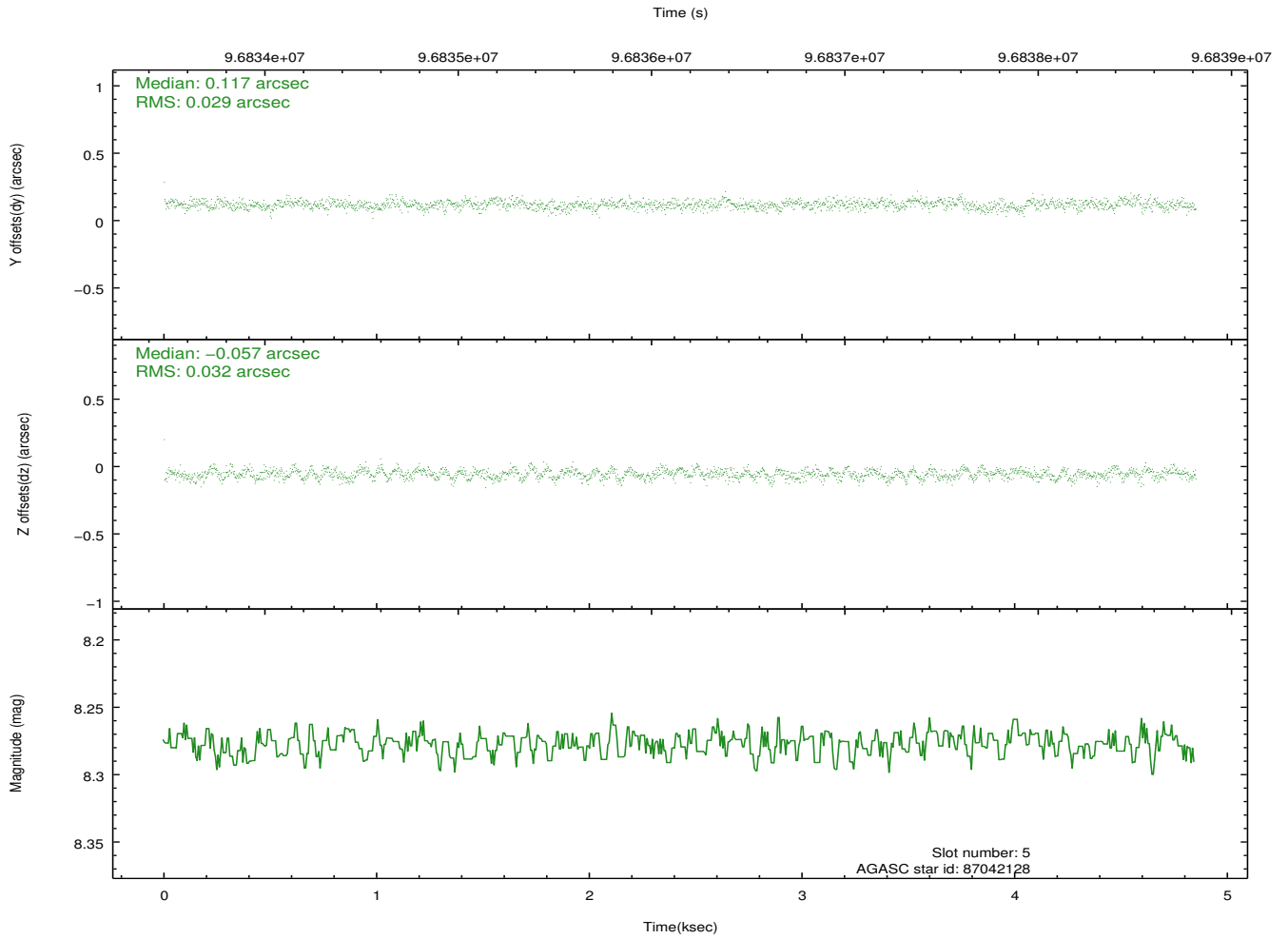
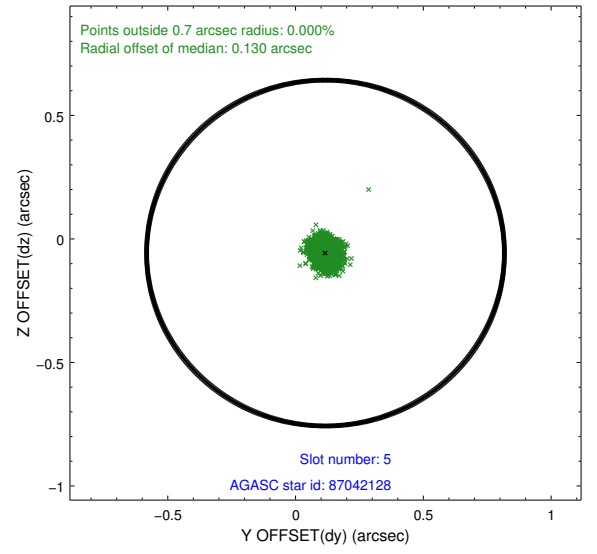
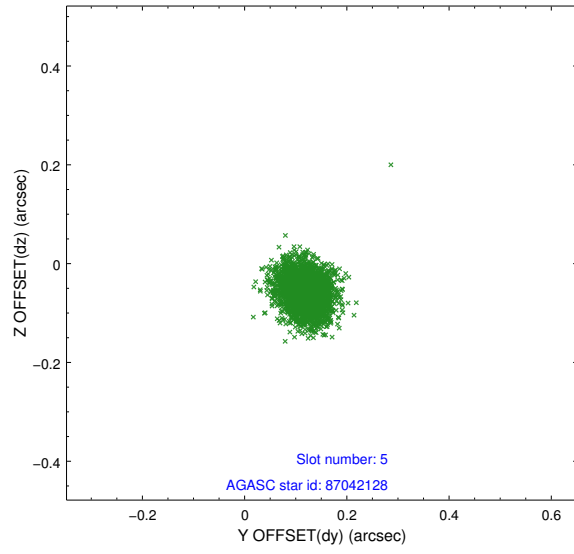
2.4.1 Slot 3



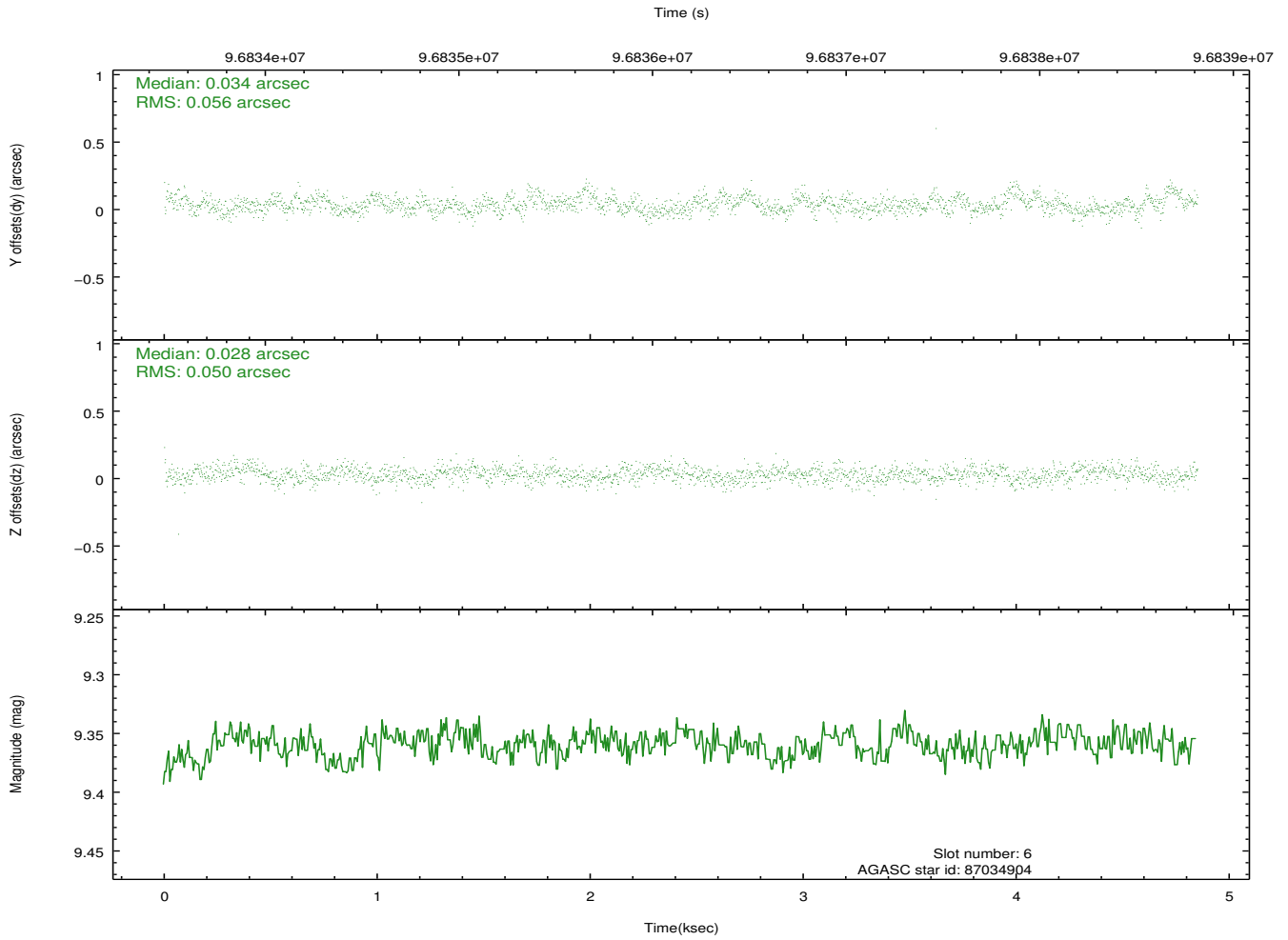
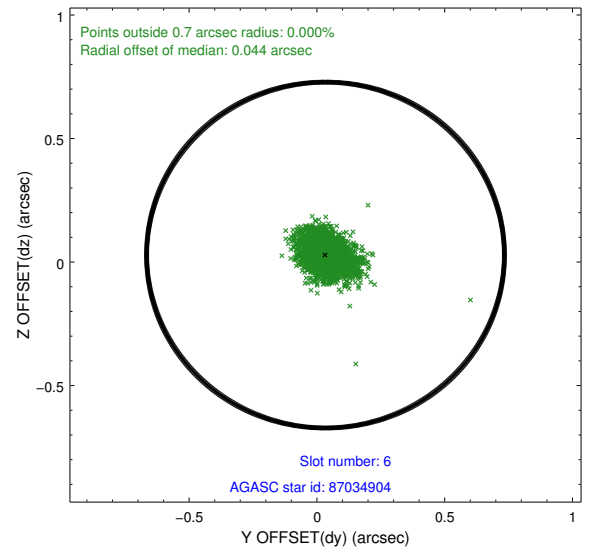
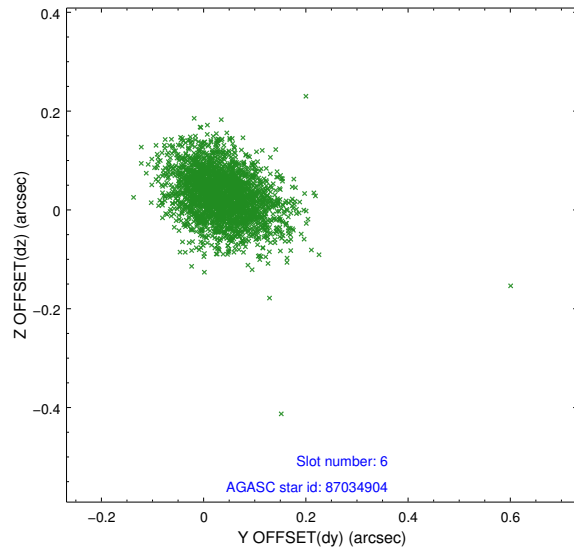
2.4.2 Slot 4



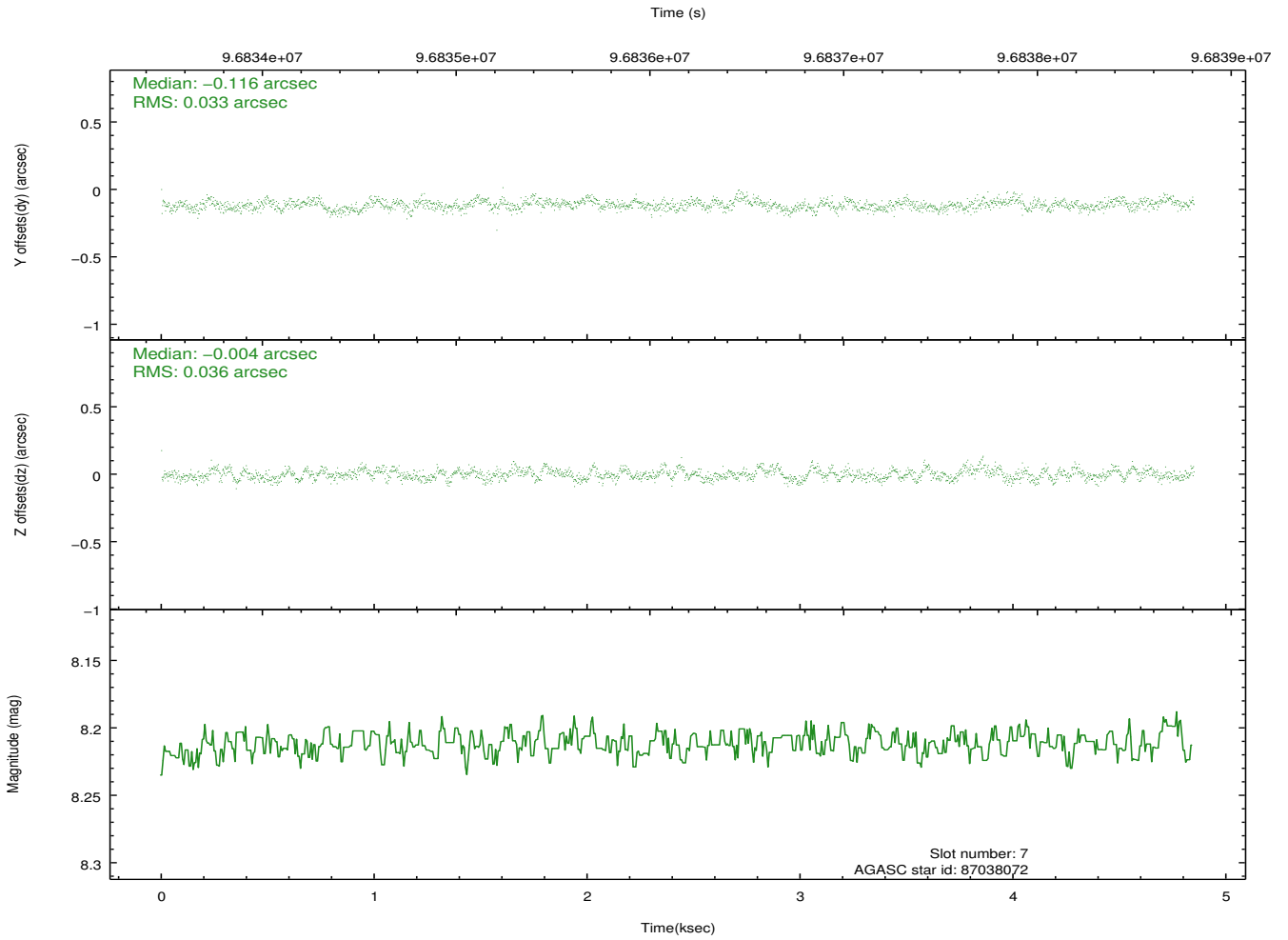
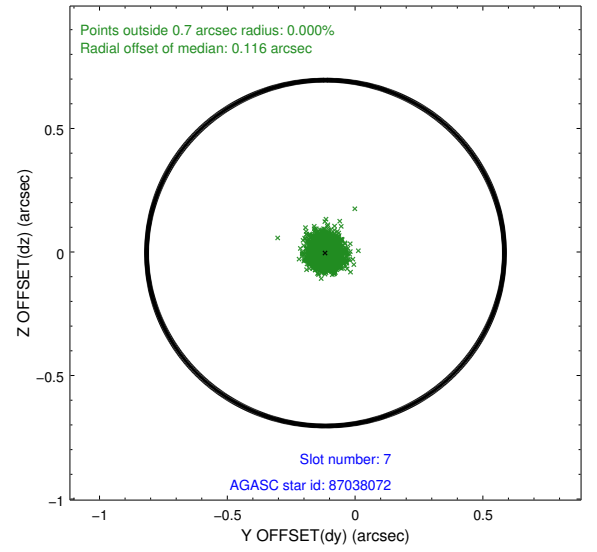
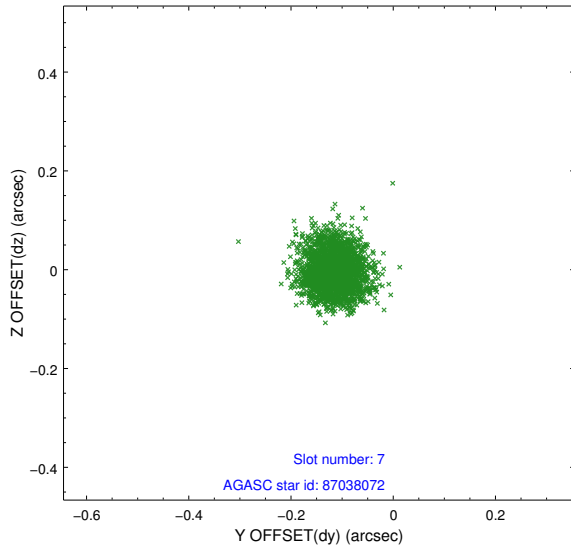
2.4.3 Slot 5



2.4.4 Slot 6

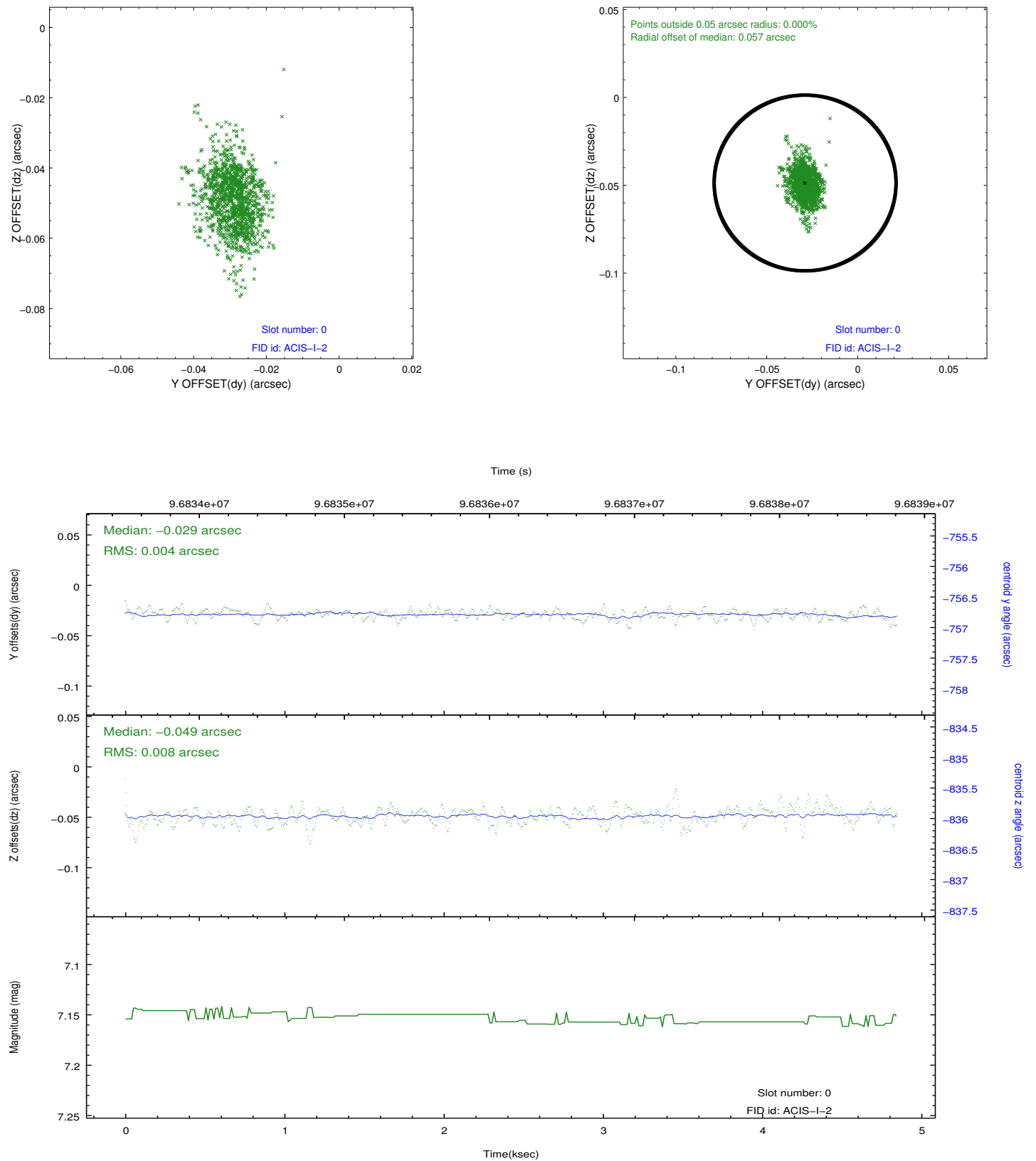


2.4.5 Slot 7

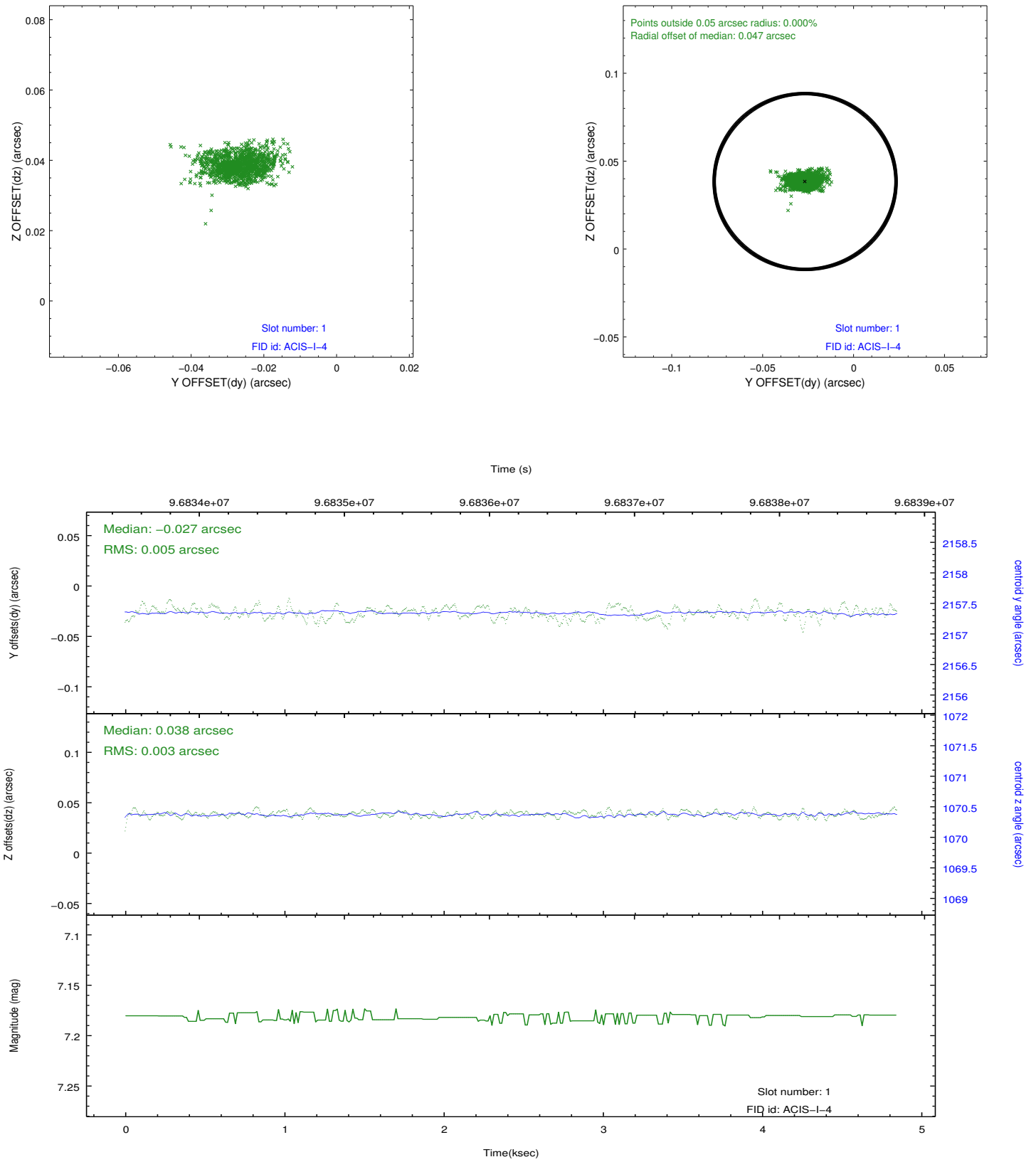


2.5 FID Slots

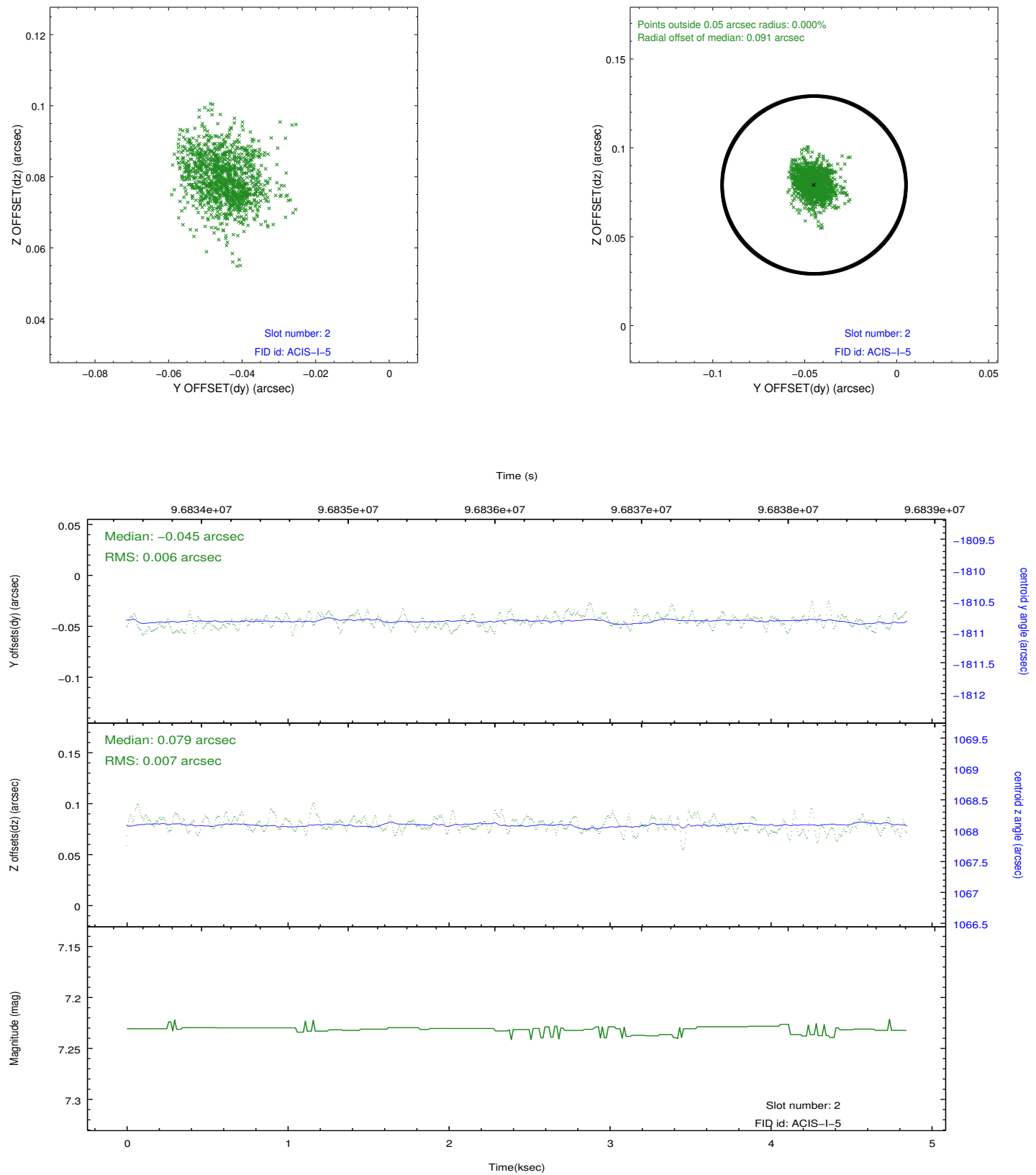
2.5.1 Slot 0



2.5.2 Slot 1



2.5.3 Slot 2



A Summary

A.1 Status

V&V Scientist	Jen Lauer
V&V Date (YYYY-MM-DD)	2012.09.17
V&V Edition	1
V&V Disposition and Status	OK
V&V Charge Time	4.847

A.2 Comments