

V&V Reference Report

L2 ASCDS Version : 8.4.5

Observation 2149 - L2 Version 3
Chandra X-Ray Center

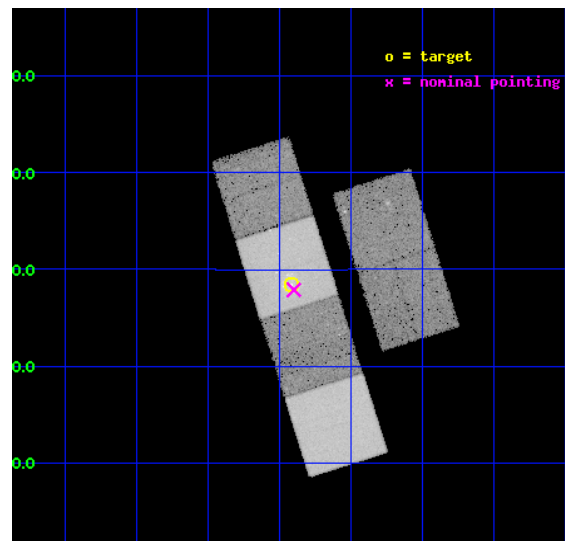
L2 Processing Date : Sep 21 2012

Contents

1	Front	2
2	OBI	3
2.1	OBI	3
2.1.1	Images	3
2.1.2	Bias	3
2.1.3	Parameters	4
2.1.4	Events	4
2.2	Compared Parameters	5
2.3	Aspect	6
2.4	Star Slots	9
2.4.1	Slot 3	9
2.4.2	Slot 4	10
2.4.3	Slot 5	11
2.4.4	Slot 6	12
2.4.5	Slot 7	13
2.5	FID Slots	14
2.5.1	Slot 0	14
2.5.2	Slot 1	15
2.5.3	Slot 2	16
A	Summary	17
A.1	Status	17
A.2	Comments	17

1 Front

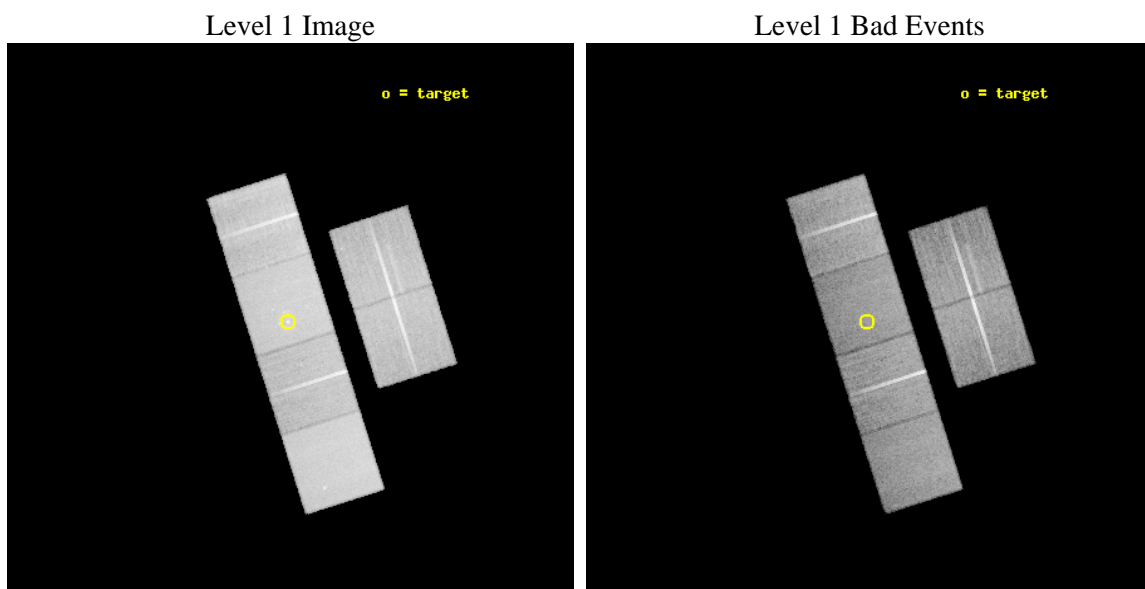
seq_num	700339	Sequence number
obs_id	2149	Observation id
title	STARBURST-AGN CONNECTION: CIRCUMNUCLEAR STAR FORMATION IN SEYFERT 2	
observer	Dr. Maria Santos-Lleo	Principal investigator
object	NGC 4303	Source name
dtcycle	0	
cycle	P	events from which exps? Prim/Second/Both
ra_targ	185.479167	Observer's specified target RA [deg]
dec_targ	4.473583	Observer's specified target Dec [deg]
ra_nom	185.47458119518	Nominal RA [deg]
dec_nom	4.4649515656475	Nominal Dec [deg]
roll_nom	252.3949531795	Nominal Roll [deg]
revision	3	Processing version of data
ontime	28377.600026414	Sum of GTIs [s]
livetime	28018.26576794	Livetime [s]
ontime2	28377.600026414	Sum of GTIs [s]
ontime3	28377.600026414	Sum of GTIs [s]
ontime5	28377.600026414	Sum of GTIs [s]
ontime6	28377.600026414	Sum of GTIs [s]
ontime7	28377.600026414	Sum of GTIs [s]
ontime8	28374.359195769	Sum of GTIs [s]
l2events	328527	Number of level 2 events



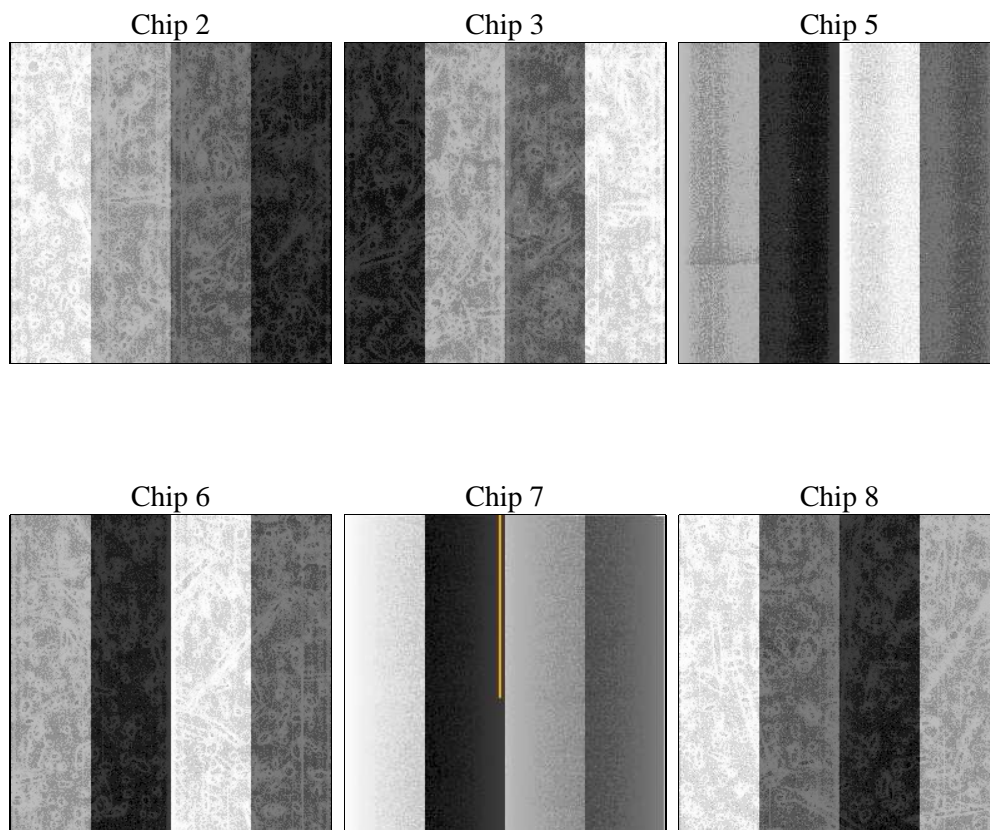
2 OBI

2.1 OBI

2.1.1 Images



2.1.2 Bias



2.1.3 Parameters

obi_num	0	Obi number	sched_exp_time	28627.000000	[s] Scheduled observation exposure time
ascdsver	8.4.5	Processing system revision	ontime	28377.600026414	Sum of GTIs [s]
caldsver	4.5.1.1	 	ontime2	28377.600026414	Sum of GTIs [s]
date	2012-09-21T11:57:53	Date and time of file creation	ontime3	28377.600026414	Sum of GTIs [s]
revision	3	Processing version of data	ontime5	28377.600026414	Sum of GTIs [s]
			ontime6	28377.600026414	Sum of GTIs [s]
			ontime7	28377.600026414	Sum of GTIs [s]
			ontime8	28374.359195769	Sum of GTIs [s]
			l1events	1334463	Number of level 1 events

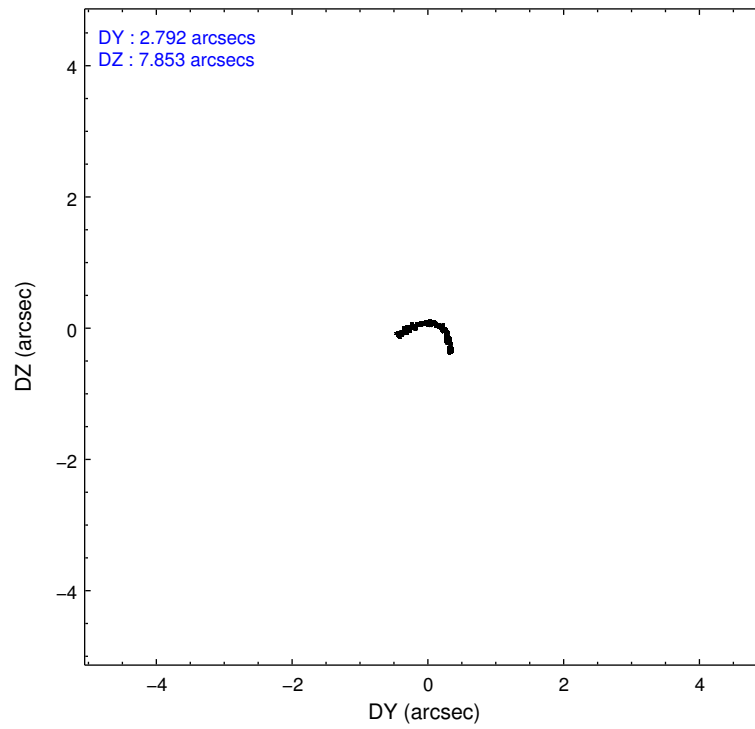
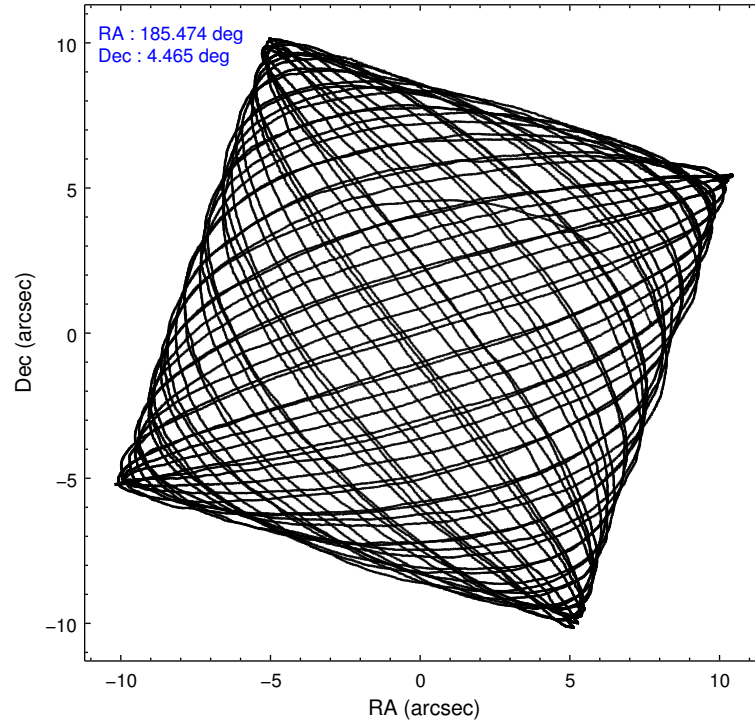
2.1.4 Events

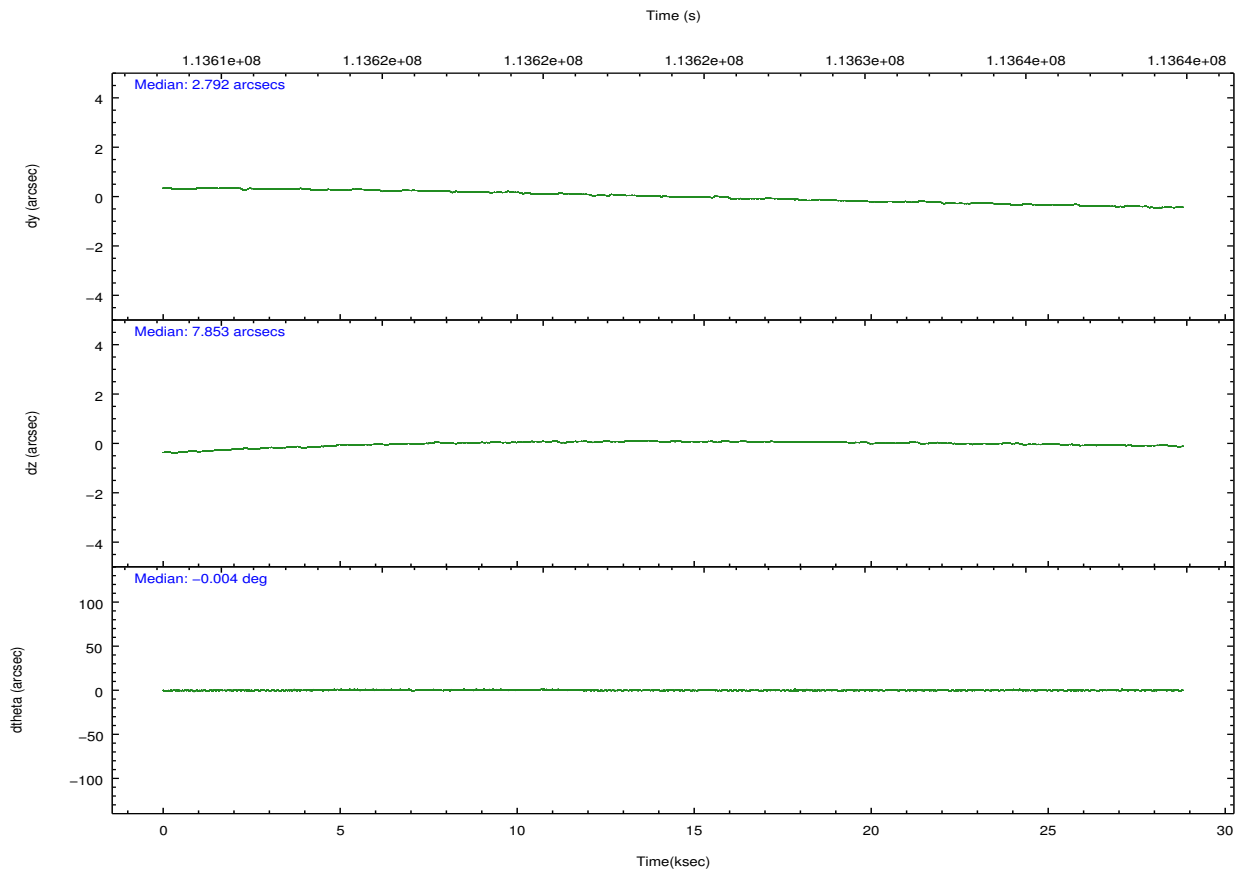
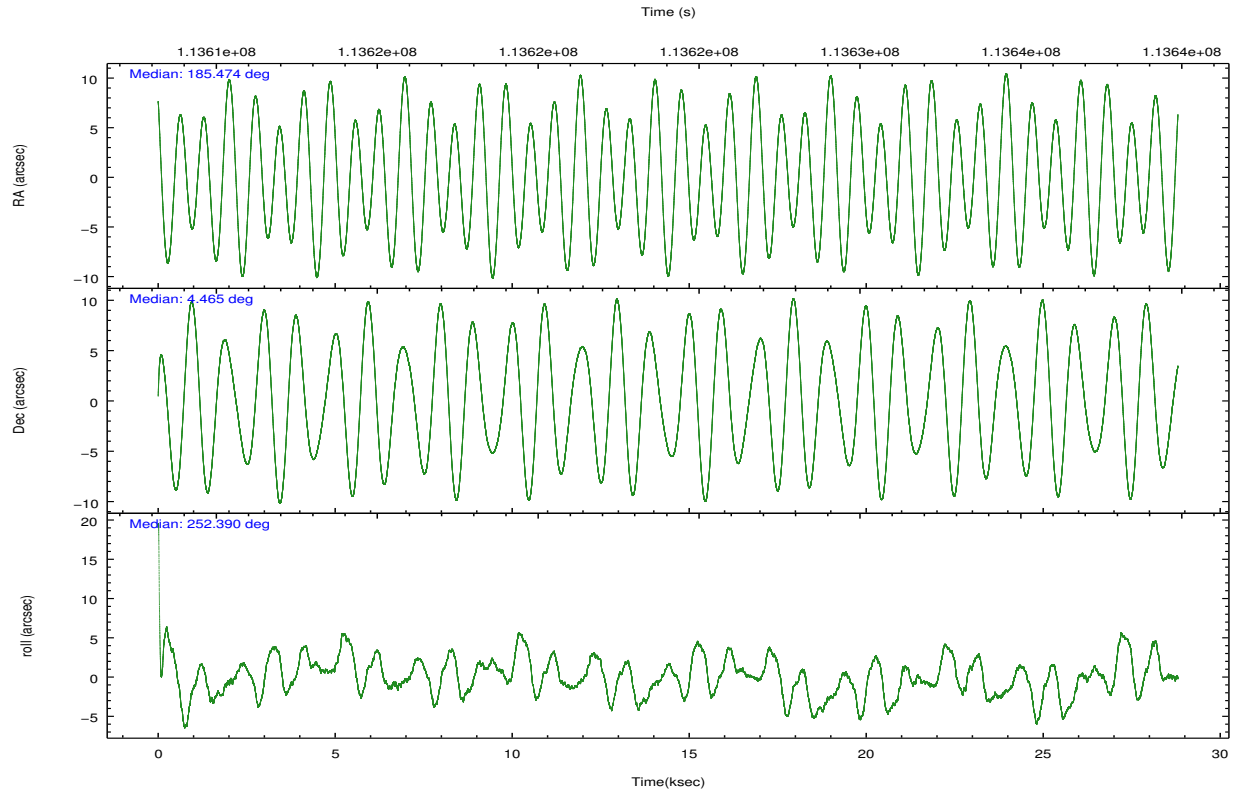
	ccd 2	ccd 3	ccd 5	ccd 6	ccd 7	ccd 8		ccd 2	ccd 3	ccd 5	ccd 6	ccd 7	ccd 8
level 1 events	188880	183688	274710	187595	262343	237247	grade 0 events	9286	9591	12311	10142	14512	15477
rejected events	167335	162110	143074	164580	139322	190430		4%	5%	4%	5%	5%	6%
rejected %	88%	88%	52%	87%	53%	80%	grade 1 events	86	78	311	94	225	144
								0%	0%	0%	0%	0%	0%
							grade 2 events	4654	4200	38184	4420	24392	9970
								2%	2%	13%	2%	9%	4%
							grade 3 events	2017	2034	6522	2173	11002	5013
								1%	1%	2%	1%	4%	2%
							grade 4 events	2013	1956	6283	2136	10824	4647
								1%	1%	2%	1%	4%	1%
							grade 5 events	6419	7170	20651	7845	22886	9891
								3%	3%	7%	4%	8%	4%
							grade 6 events	3583	3803	68368	4153	62314	11722
								1%	2%	24%	2%	23%	4%
							grade 7 events	160822	154856	122080	156632	116188	180383
								85%	84%	44%	83%	44%	76%

2.2 Compared Parameters

Parameter	Planned	Actual	Parameter	Planned	Actual
Instrument	ACIS	ACIS	Obspar format version number	7	7
Detector	ACIS-235678	ACIS-235678	Obspar file type	PREDICTED	ACTUAL
Grating	NONE	NONE	Obspar update status	NONE	UPDATED
Data mode	FAINT	FAINT	Number of optional ACIS chips dropped	0	0
Observation mode	POINTING	POINTING	On-chip summing requested	N	N
[deg] Pointing RA	185.468433	185.4745811951768	Subarray requested	NONE	NONE
[deg] Pointing Dec	4.491540	4.464951565647508	Alternating exposures requested	N	N
[deg] Pointing Roll	252.238801	252.3949531794993	[s] Primary exposure time	0.000000	3.2
[mm] SIM focus pos	-0.684267	-0.6828225247311905			
[mm] SIM defocus	0	0.001444936568705701			
[mm] SIM translation stage pos	-190.132523	-190.1400660498719			
[mm] SIM translation stage offset	0	0.00754346686406393			
[s] Observation start time (MET)	113609811.184000	113609213.3351			
Observation start date	2001-08-07T22:15:47	2001-08-07T22:06:53			
[s] Observation end time (MET)	113638438.184000	113639830.59881			
Observation end date	2001-08-08T06:12:54	2001-08-08T06:37:10			
Read mode	TIMED	TIMED			

2.3 Aspect



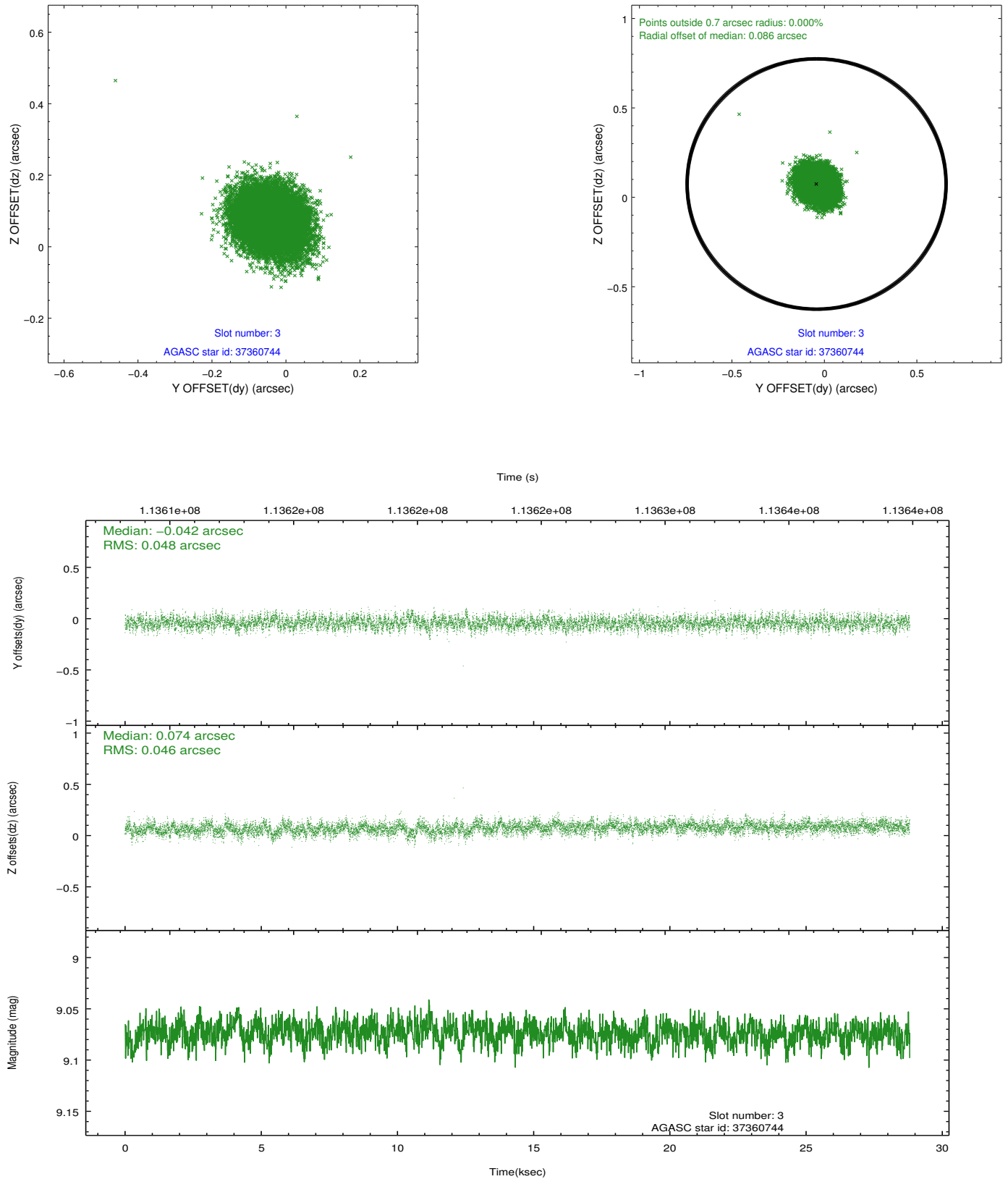


Slot Statistics

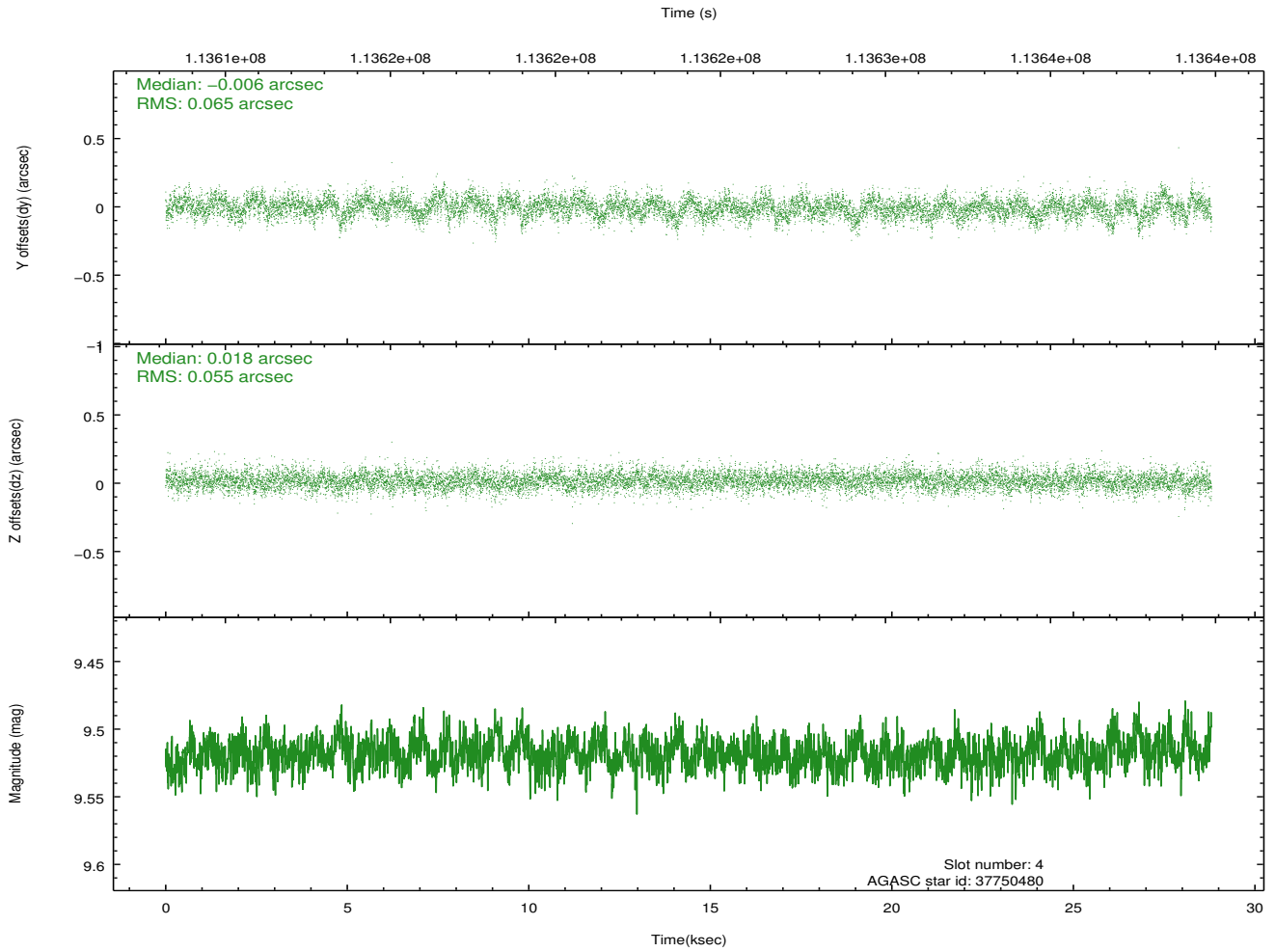
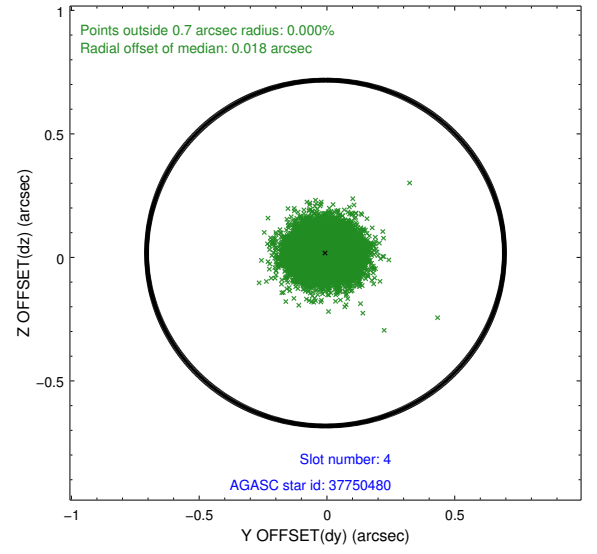
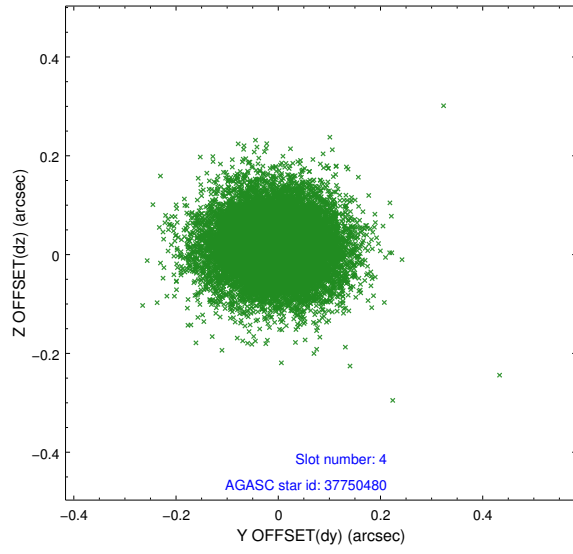
slot	status	id	mag	n_pts	med_dy	med_dz	dr1	dr2	ra	dec	mean_y	mean_z
0	FID	ACIS-S-2	7.11	7026	0.000	-0.005	0.013	0.019	0.000000	0.000000	-755.43	-1729.01
1	FID	ACIS-S-4	7.19	7024	-0.054	0.002	0.013	0.020	0.000000	0.000000	2157.77	179.37
2	FID	ACIS-S-5	7.24	7025	0.021	0.012	0.010	0.016	0.000000	0.000000	-1808.13	173.17
3	GUIDE	37360744	9.07	14048	-0.042	0.074	0.070	0.115	185.839549	4.671352	-1023.54	1071.70
4	GUIDE	37750480	9.52	14041	-0.006	0.018	0.090	0.149	185.717050	5.052431	-2195.59	234.09
5	GUIDE	37360448	7.99	14051	-0.019	-0.027	0.061	0.099	185.250831	4.537778	79.11	-793.31
6	GUIDE	37357584	9.78	14050	0.009	-0.018	0.088	0.145	185.252875	4.751455	-655.62	-1020.95
7	GUIDE	37231560	9.57	13978	0.057	-0.044	0.098	0.160	184.996101	4.456949	635.15	-1575.70

2.4 Star Slots

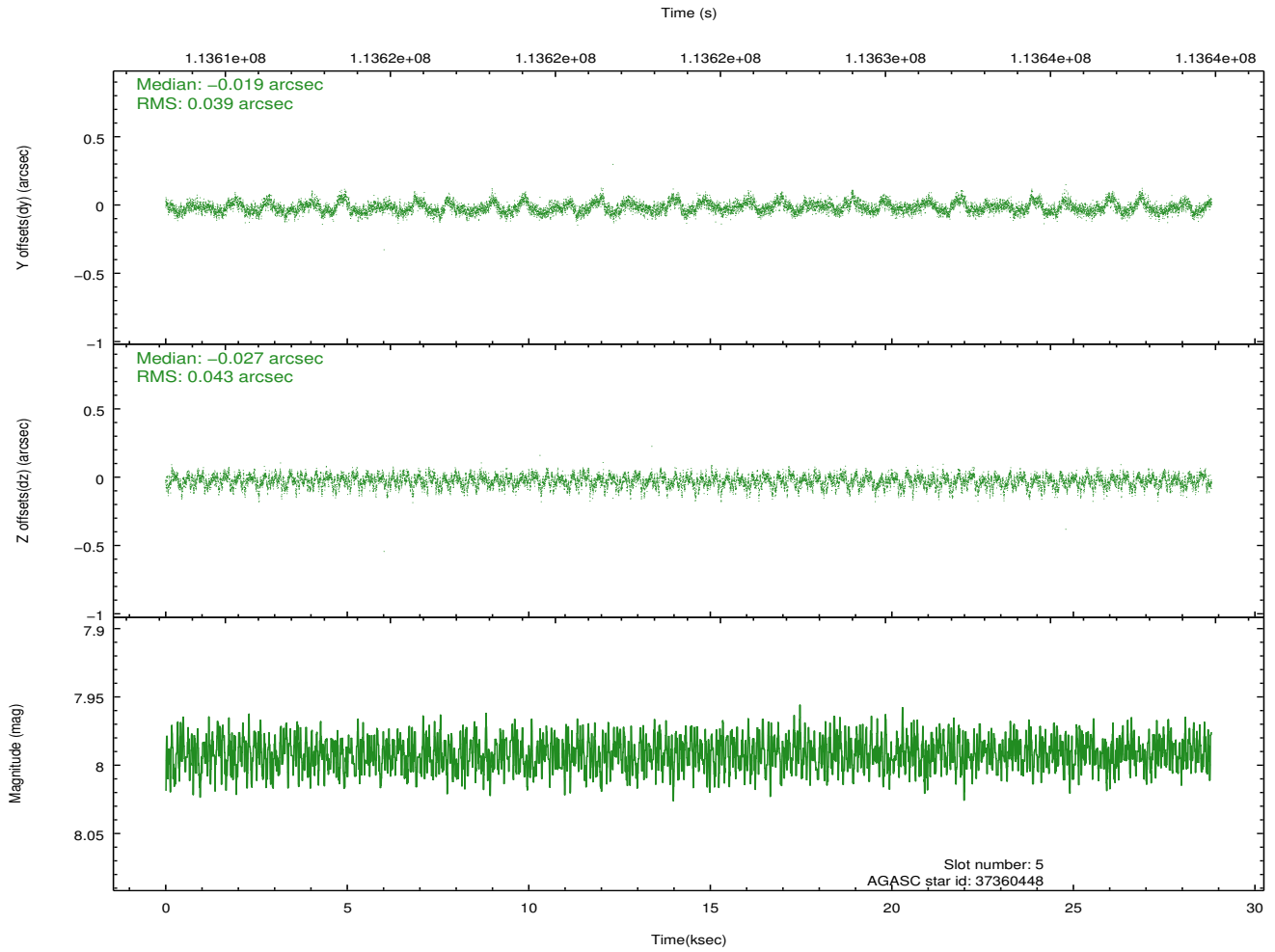
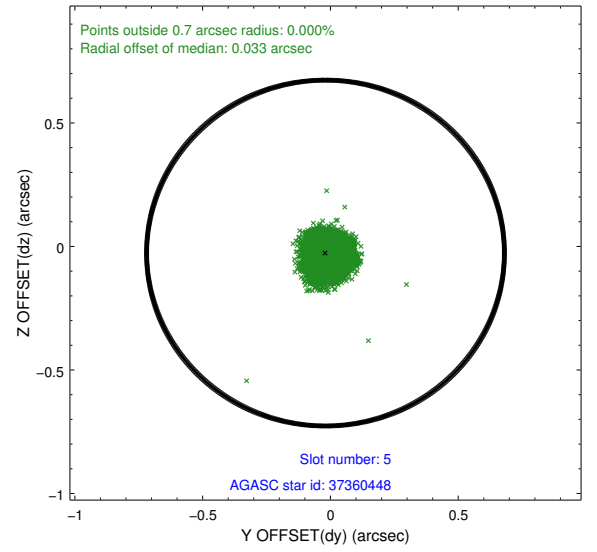
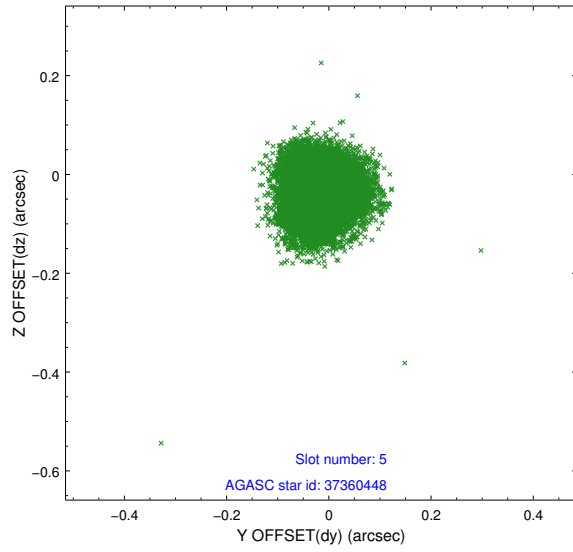
2.4.1 Slot 3



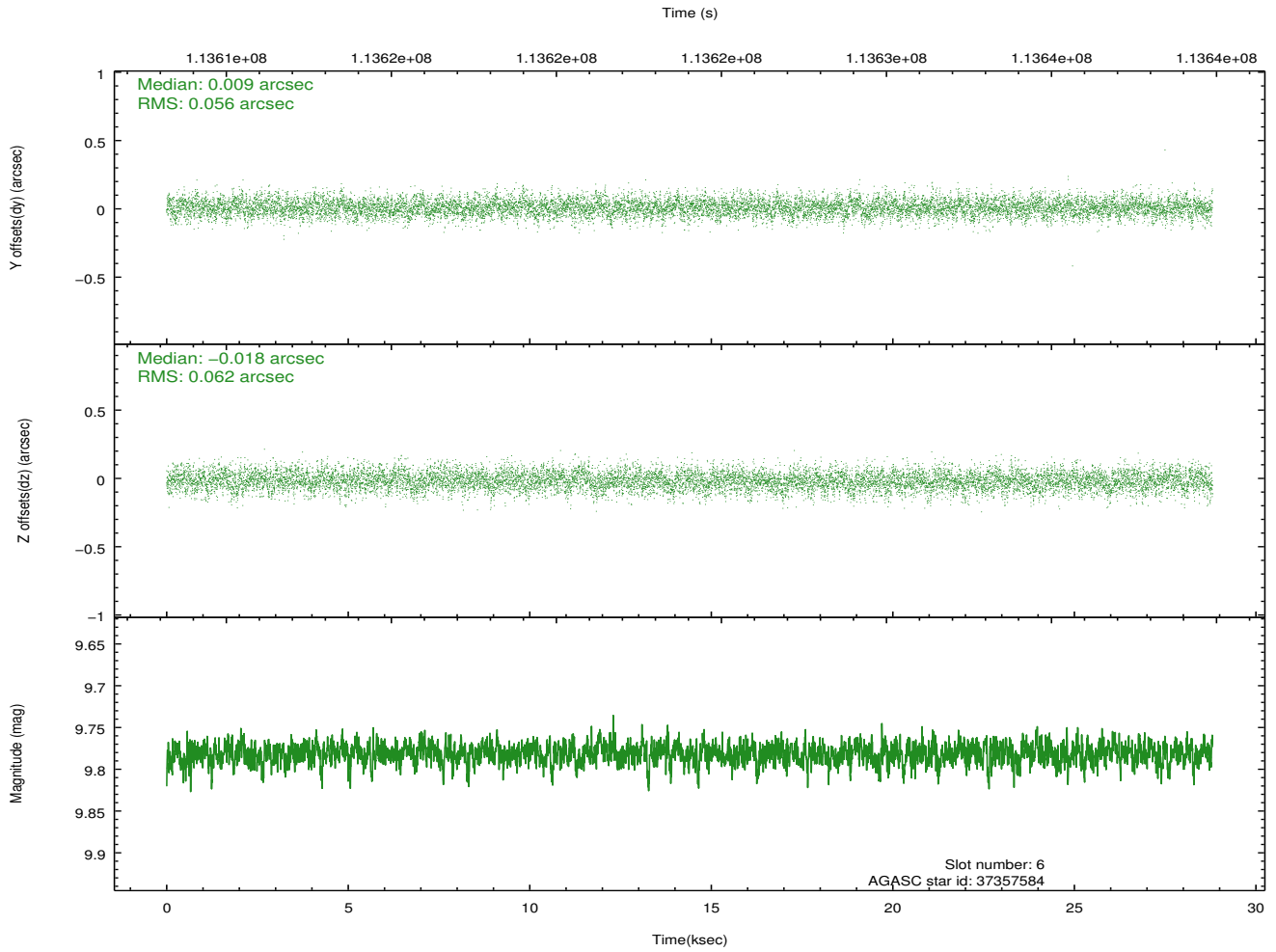
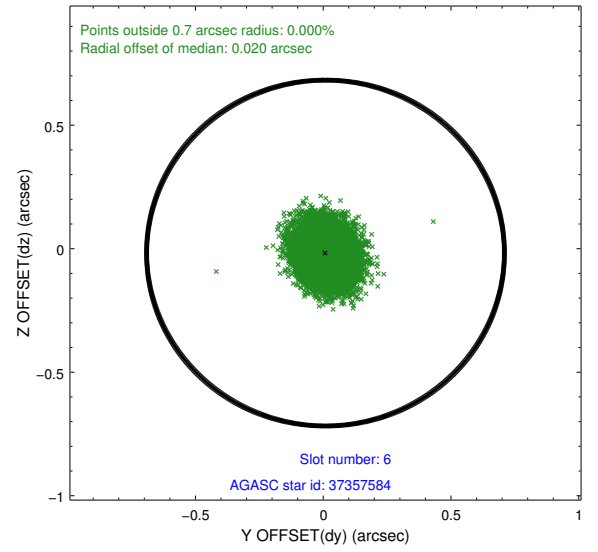
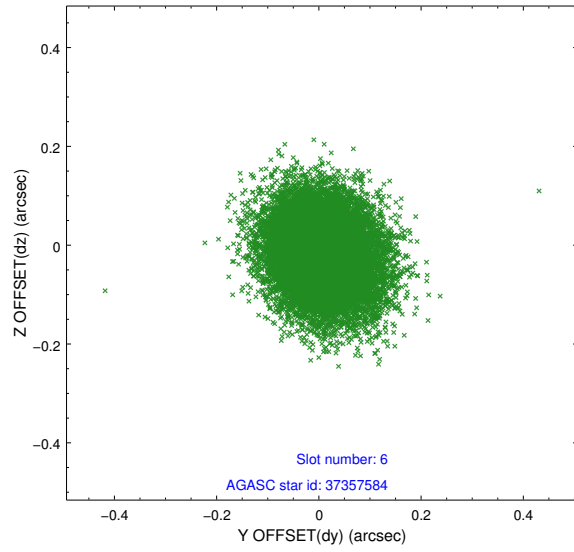
2.4.2 Slot 4



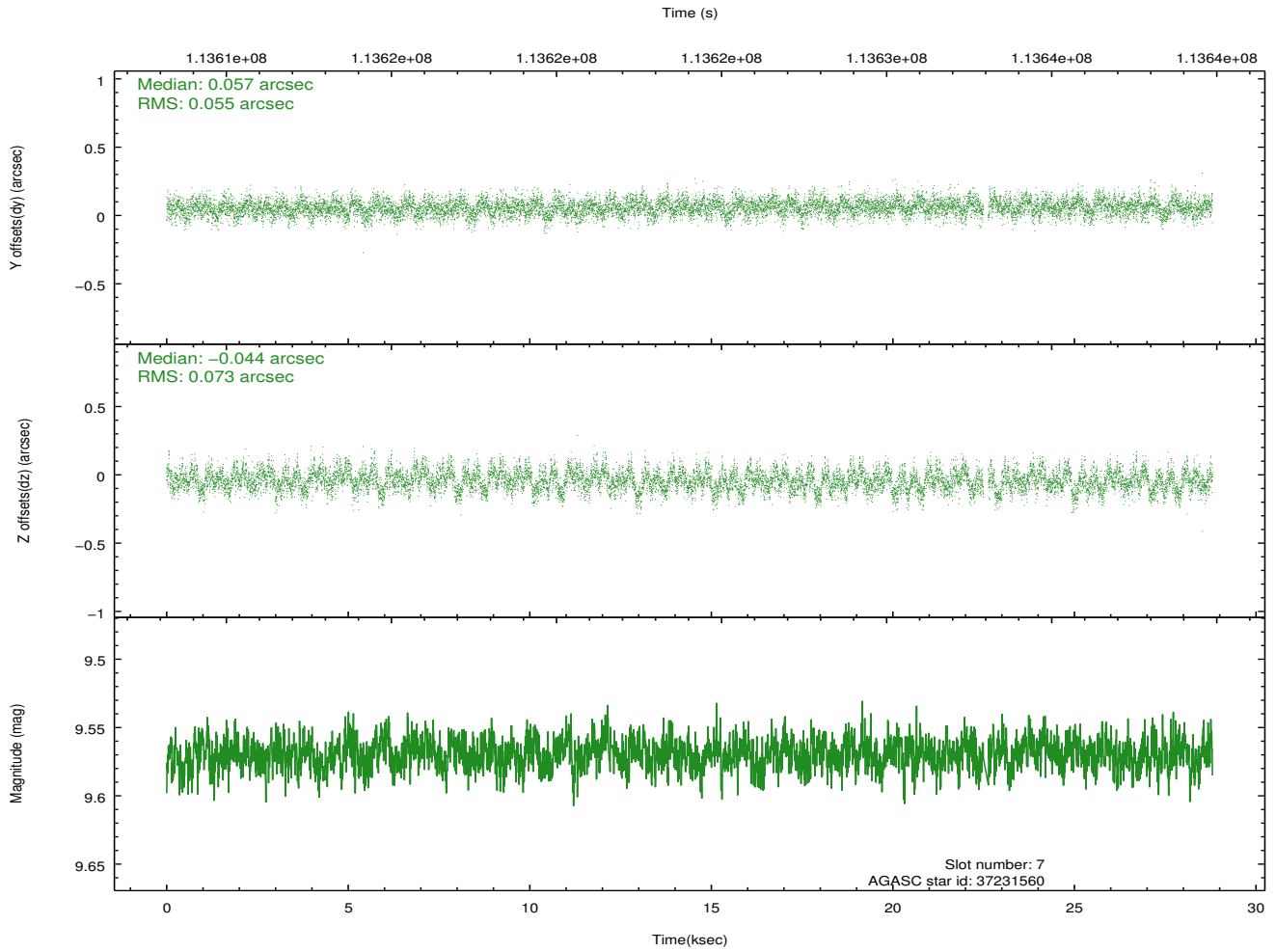
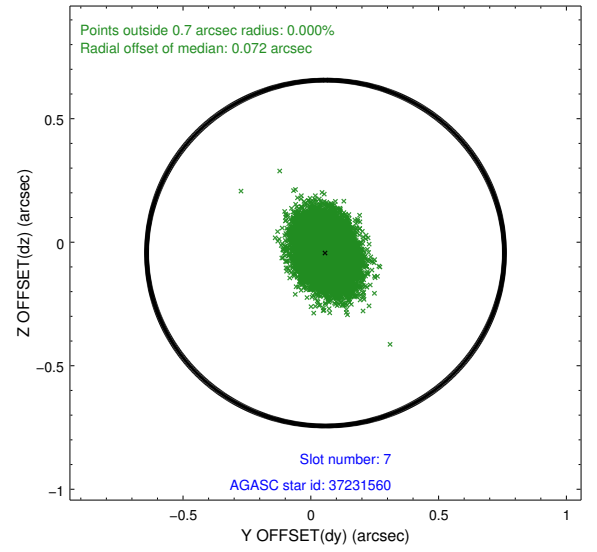
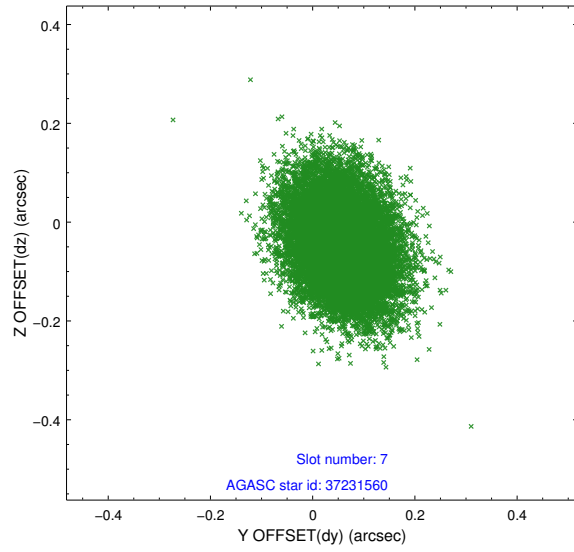
2.4.3 Slot 5



2.4.4 Slot 6

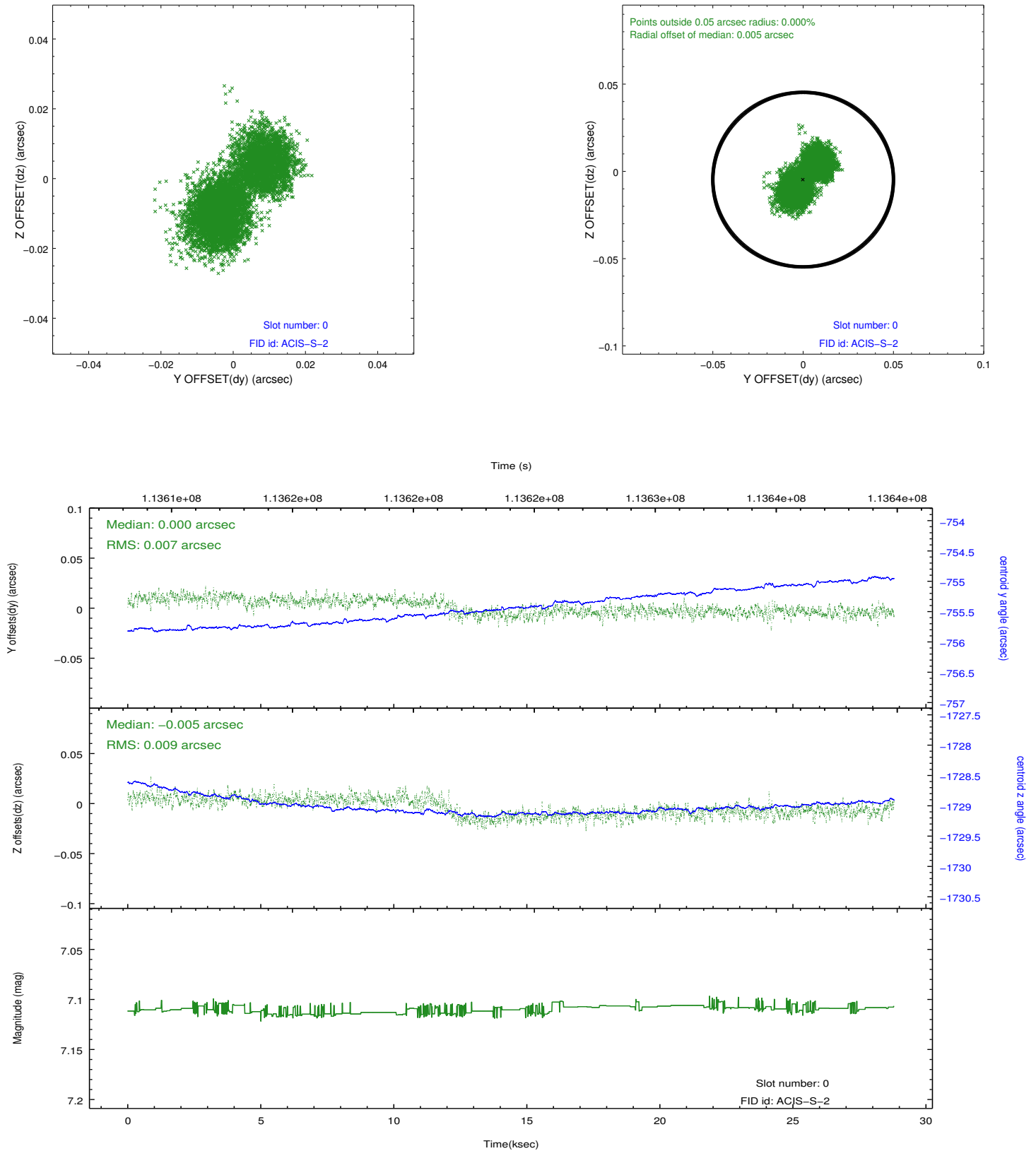


2.4.5 Slot 7

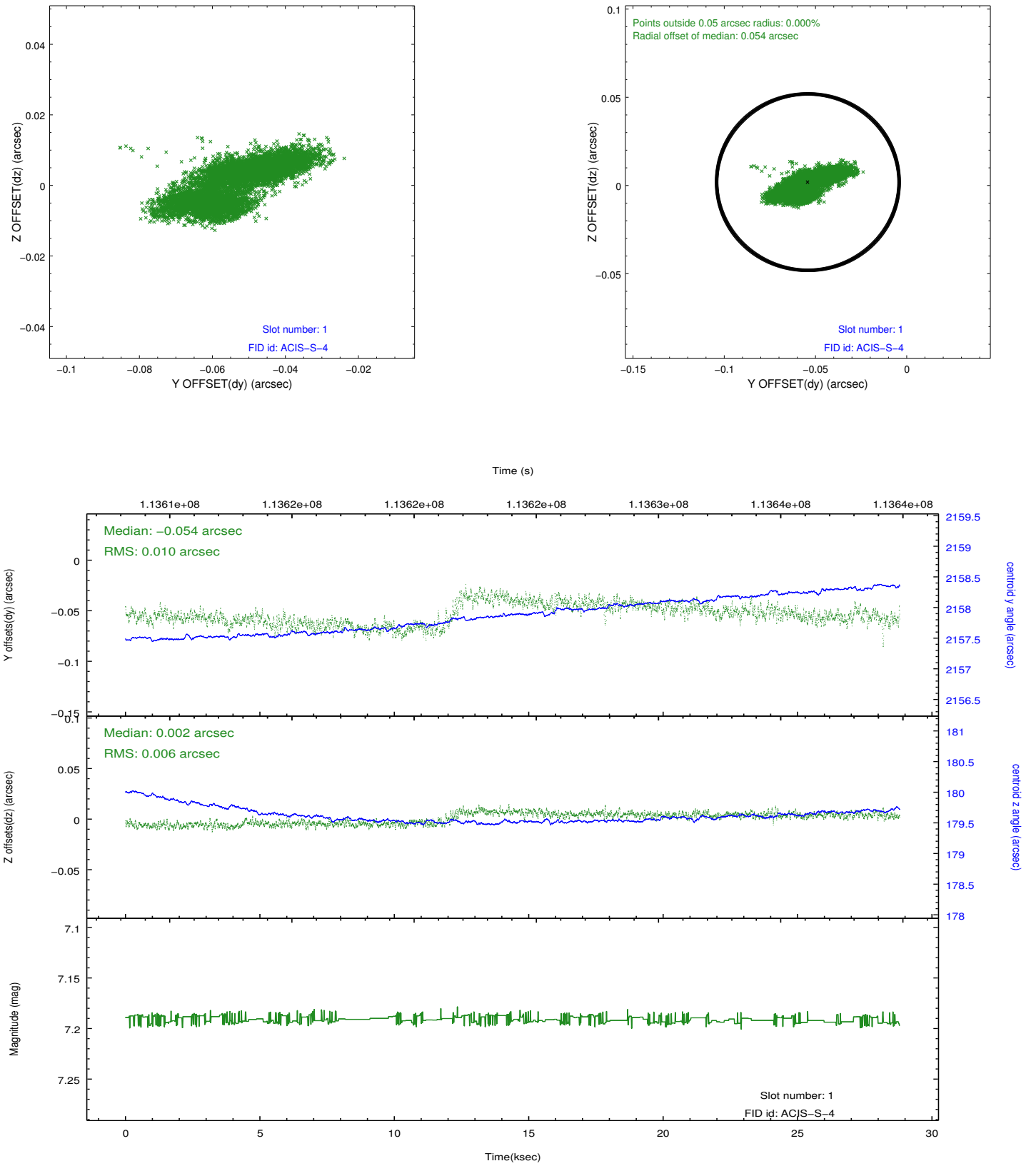


2.5 FID Slots

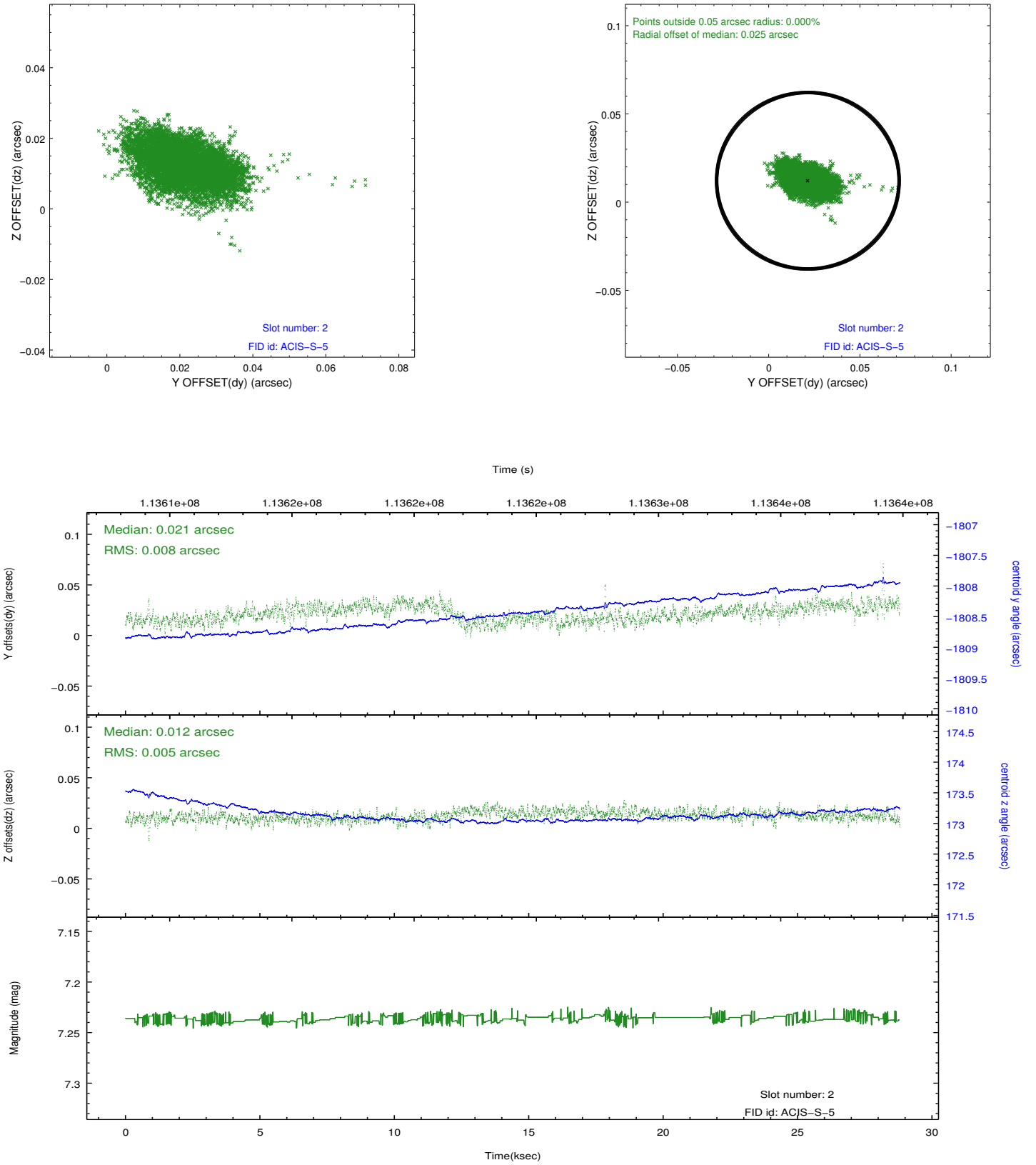
2.5.1 Slot 0



2.5.2 Slot 1



2.5.3 Slot 2



A Summary

A.1 Status

V&V Scientist	Jen Lauer
V&V Date (YYYY-MM-DD)	2012.09.25
V&V Edition	1
V&V Disposition and Status	OK
V&V Charge Time	28.378

A.2 Comments