

V&V Reference Report

L2 ASCDS Version : 7.6.9

Observation 2116 - L2 Version 001
Chandra X-Ray Center

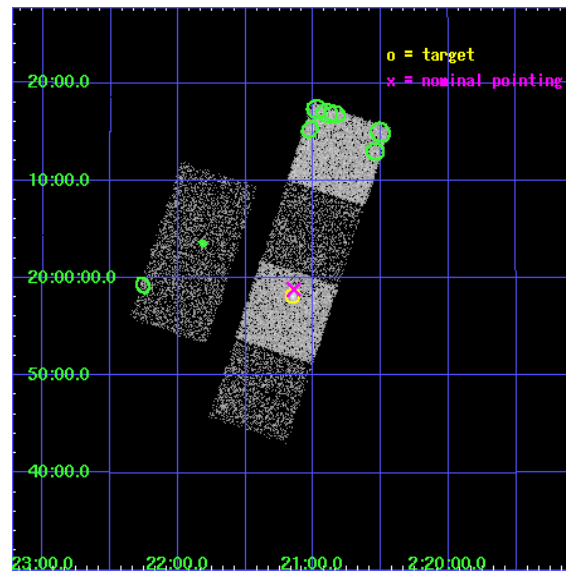
L2 Processing Date : Dec 15 2006

Contents

1	Front	2
2	OBI	3
2.1	OBI	3
2.1.1	Images	3
2.1.2	Bias	3
2.1.3	Parameters	4
2.1.4	Events	4
2.2	Compared Parameters	5
2.3	Aspect	6
2.4	Star Slots	9
2.4.1	Slot 3	9
2.4.2	Slot 4	10
2.4.3	Slot 5	11
2.4.4	Slot 6	12
2.4.5	Slot 7	13
2.5	FID Slots	14
2.5.1	Slot 0	14
2.5.2	Slot 1	15
2.5.3	Slot 2	16
3	Point Sources	17
A	Summary	18
A.1	Status	18
A.2	Comments	18

1 Front

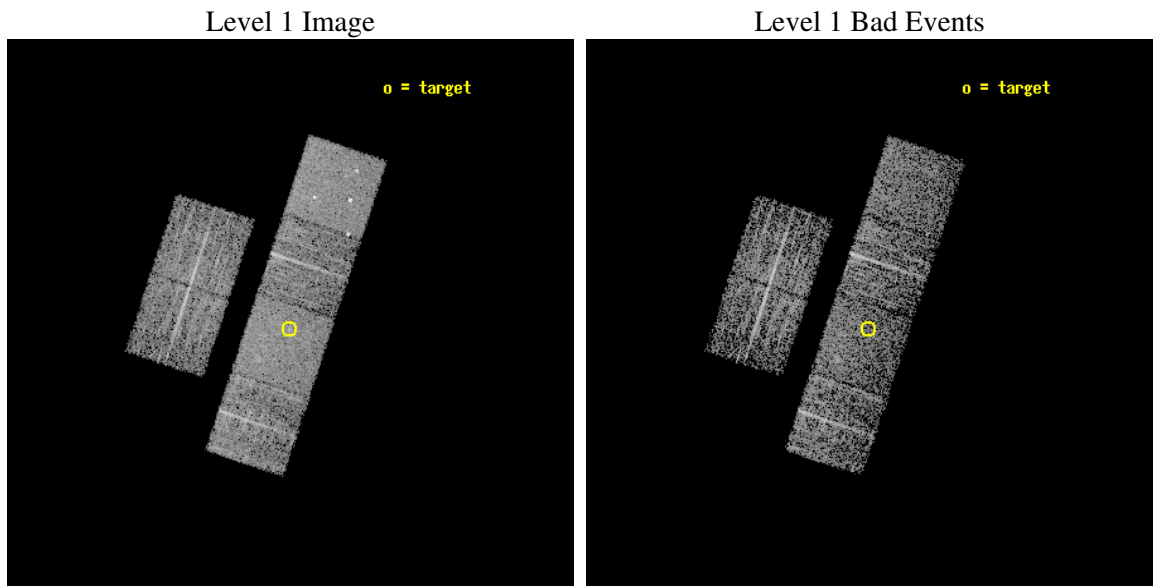
seq_num	700306
obs_id	2116
title	UNDERSTANDING THE NATURE OF ROSAT BFS
observer	DR. ILARIA CAGNONI
object	1WGA_J0221.1+1958
dtcycle	0
cycle	P
ra_targ	35.2875
dec_targ	19.970917
ra_nom	35.285935957035
dec_nom	19.980781101181
roll_nom	108.35180153602
revision	2
ontime	2950.4000027478
livetime	2913.0402613954
ontime2	2950.4000027478
ontime3	2947.1590225846
ontime5	2950.4000027478
ontime6	2950.4000027478
ontime7	2950.4000027478
ontime8	2950.4000027478
l2events	28897



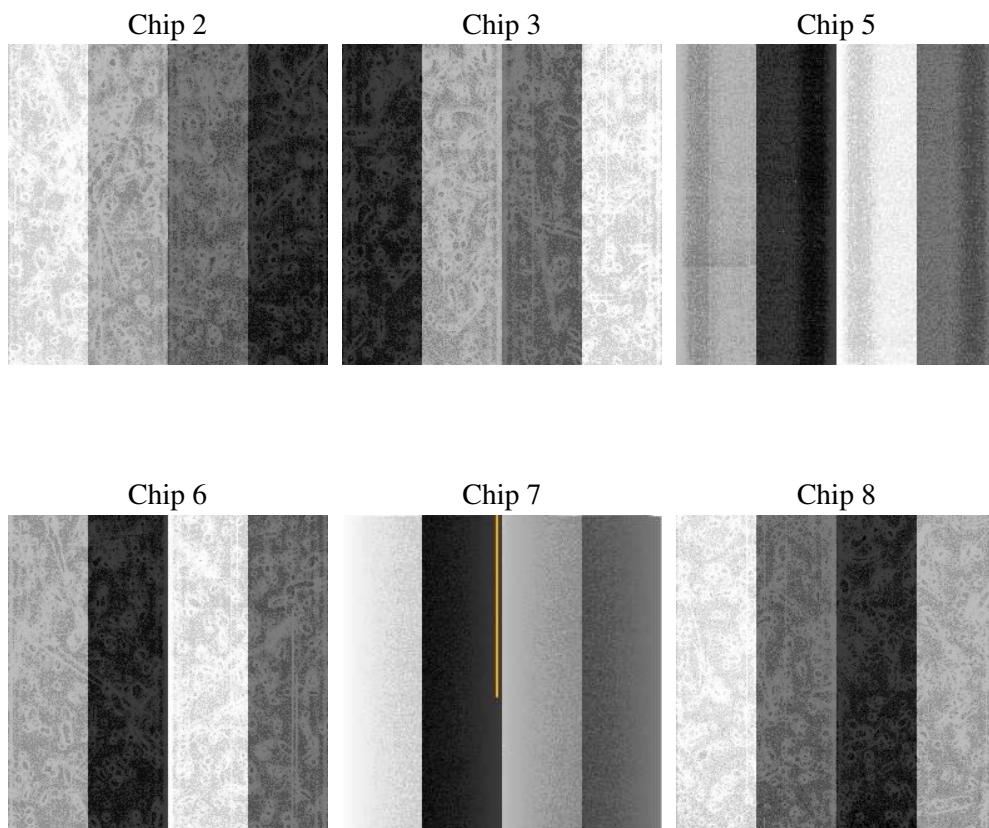
2 OBI

2.1 OBI

2.1.1 Images



2.1.2 Bias



2.1.3 Parameters

obi_num	1
ascdsver	7.6.9
caldsver	3.2.4
date	2006-12-15T16:14:28
revision	2

sched_exp_time	3000.000000
ontime	2952.5484459698
ontime2	2952.5484459698
ontime3	2949.3074658066
ontime5	2952.5484459698
ontime6	2952.5484459698
ontime7	2952.5484459698
ontime8	2952.5484459698
l1events	139501

2.1.4 Events

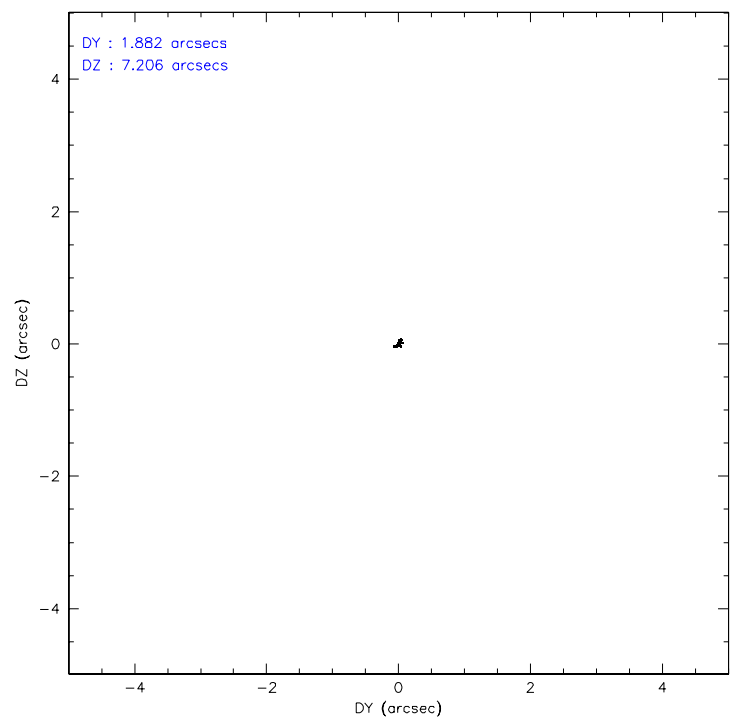
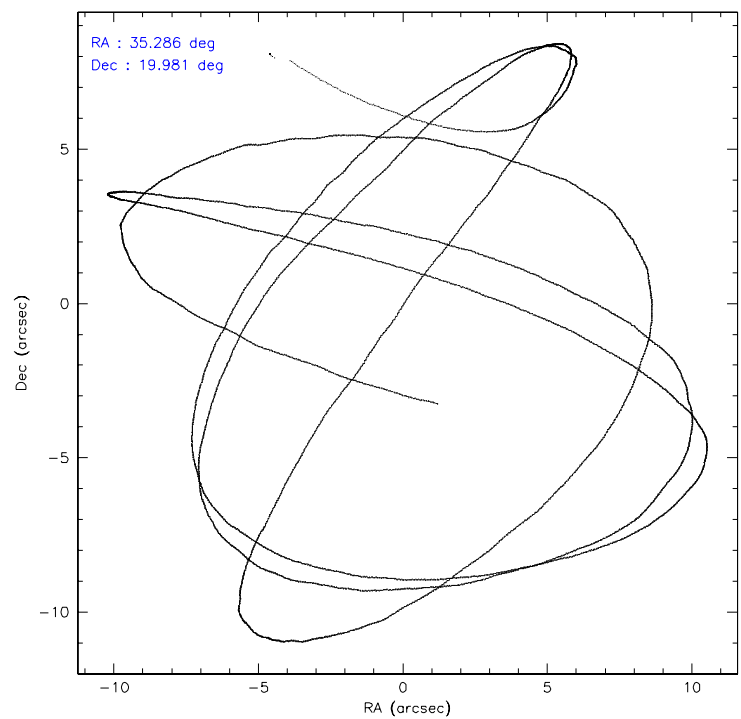
	ccd 2	ccd 3	ccd 5	ccd 6	ccd 7	ccd 8
level 1 events	21022	19815	28838	20913	25811	23102
rejected events	18737	17653	15869	18648	15721	18686
rejected %	89%	89%	55%	89%	60%	80%

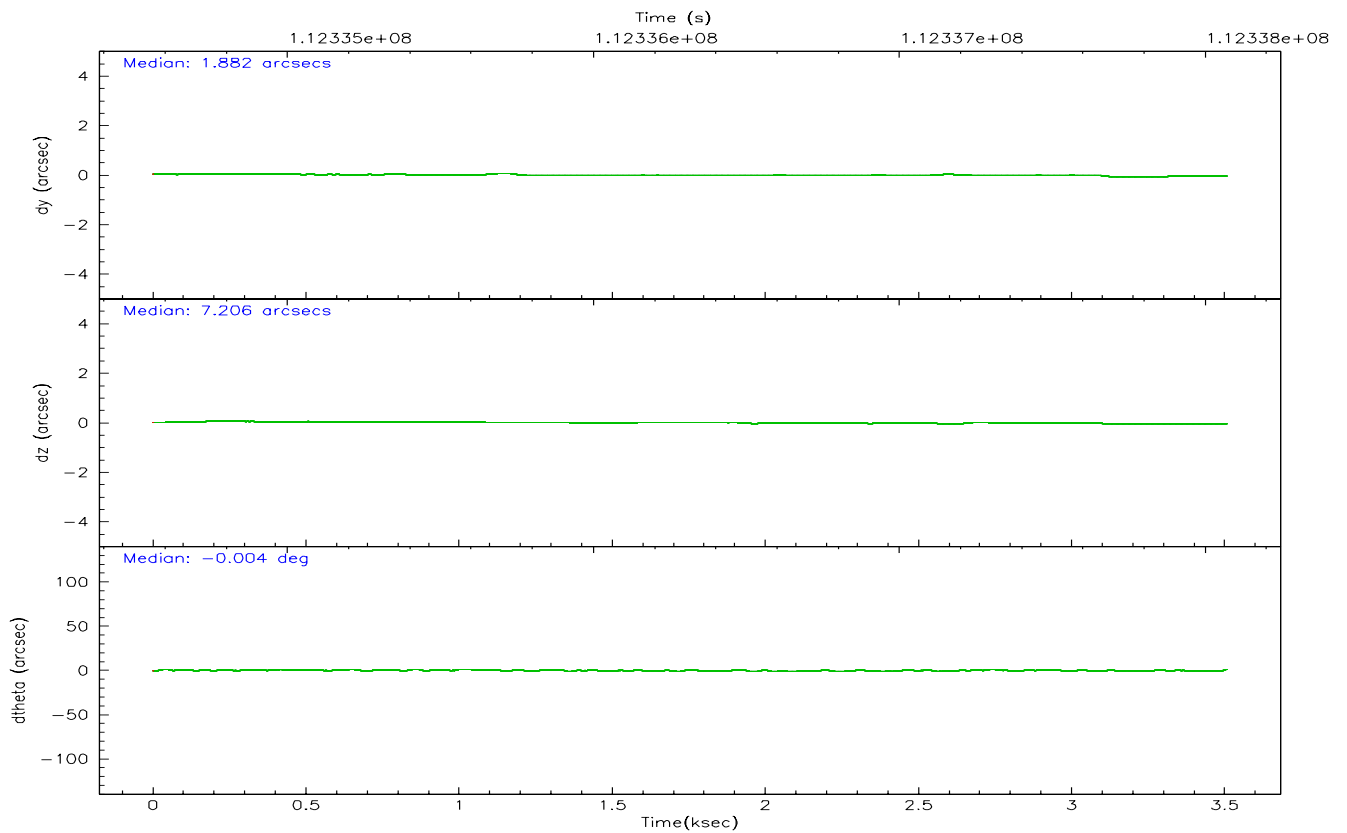
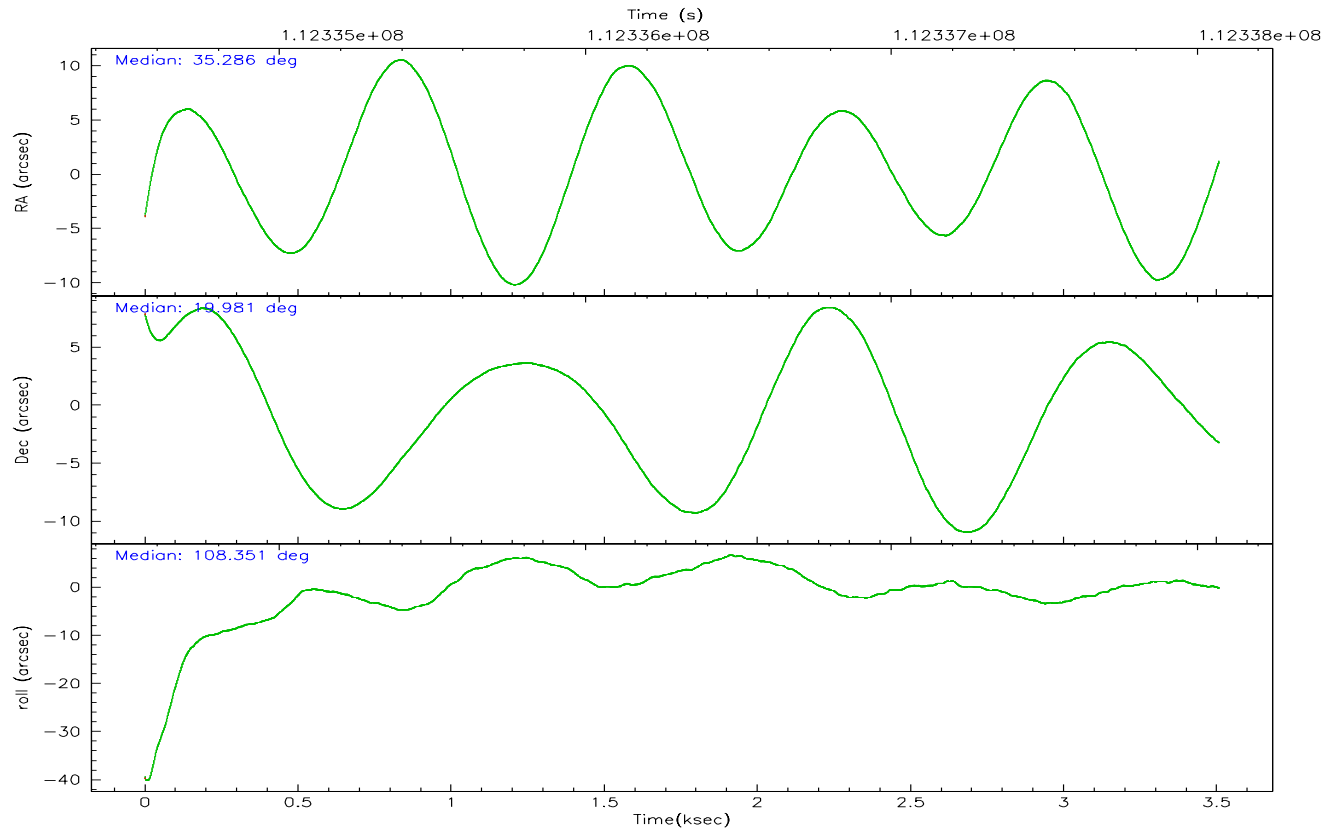
	ccd 2	ccd 3	ccd 5	ccd 6	ccd 7	ccd 8
grade 0 events	966	898	1708	885	665	1488
	4%	4%	5%	4%	2%	6%
grade 1 events	10	10	87	11	11	10
	0%	0%	0%	0%	0%	0%
grade 2 events	489	421	3715	464	2522	940
	2%	2%	12%	2%	9%	4%
grade 3 events	203	250	318	221	611	482
	0%	1%	1%	1%	2%	2%
grade 4 events	221	220	305	258	566	408
	1%	1%	1%	1%	2%	1%
grade 5 events	719	781	1365	868	1802	1068
	3%	3%	4%	4%	6%	4%
grade 6 events	410	374	6933	439	5736	1101
	1%	1%	24%	2%	22%	4%
grade 7 events	18004	16861	14407	17767	13898	17605
	85%	85%	49%	84%	53%	76%

2.2 Compared Parameters

Parameter	Planned	Actual	Parameter	Planned	Actual
Instrument	ACIS	ACIS	Obspar format version number	6	6
Detector	ACIS-235678	ACIS-235678	Obspar file type	PREDICTED	ACTUAL
Grating	NONE	NONE	Obspar update status	NONE	UPDATED
Data mode	FAINT	FAINT	Number of optional ACIS chips dropped	0	0
Observation mode	POINTING	POINTING	On-chip summing requested	N	N
Pointing RA	35.307928	35.28593595703453	Subarray requested	NONE	NONE
Pointing Dec	19.962670	19.98078110118131	Alternating exposures requested	N	N
Pointing Roll	108.187780	108.3518015360168	Primary exposure time	0.000000	3.2
SIM focus pos (mm)	-0.684267	-0.6828225247311905			
SIM defocus (mm)	0	0.001444936568705701			
SIM translation stage pos (mm)	-190.132523	-190.1425803651734			
SIM translation stage offset (mm)	0	0.01005778216563158			
Observation start time	112335069.184000	112333932.37244			
Observation start date	2001-07-24T04:10:05	2001-07-24T03:52:12			
Observation end time	112338069.184000	112338600.73513			
Observation end date	2001-07-24T05:00:05	2001-07-24T05:10:00			
Read mode	TIMED	TIMED			

2.3 Aspect





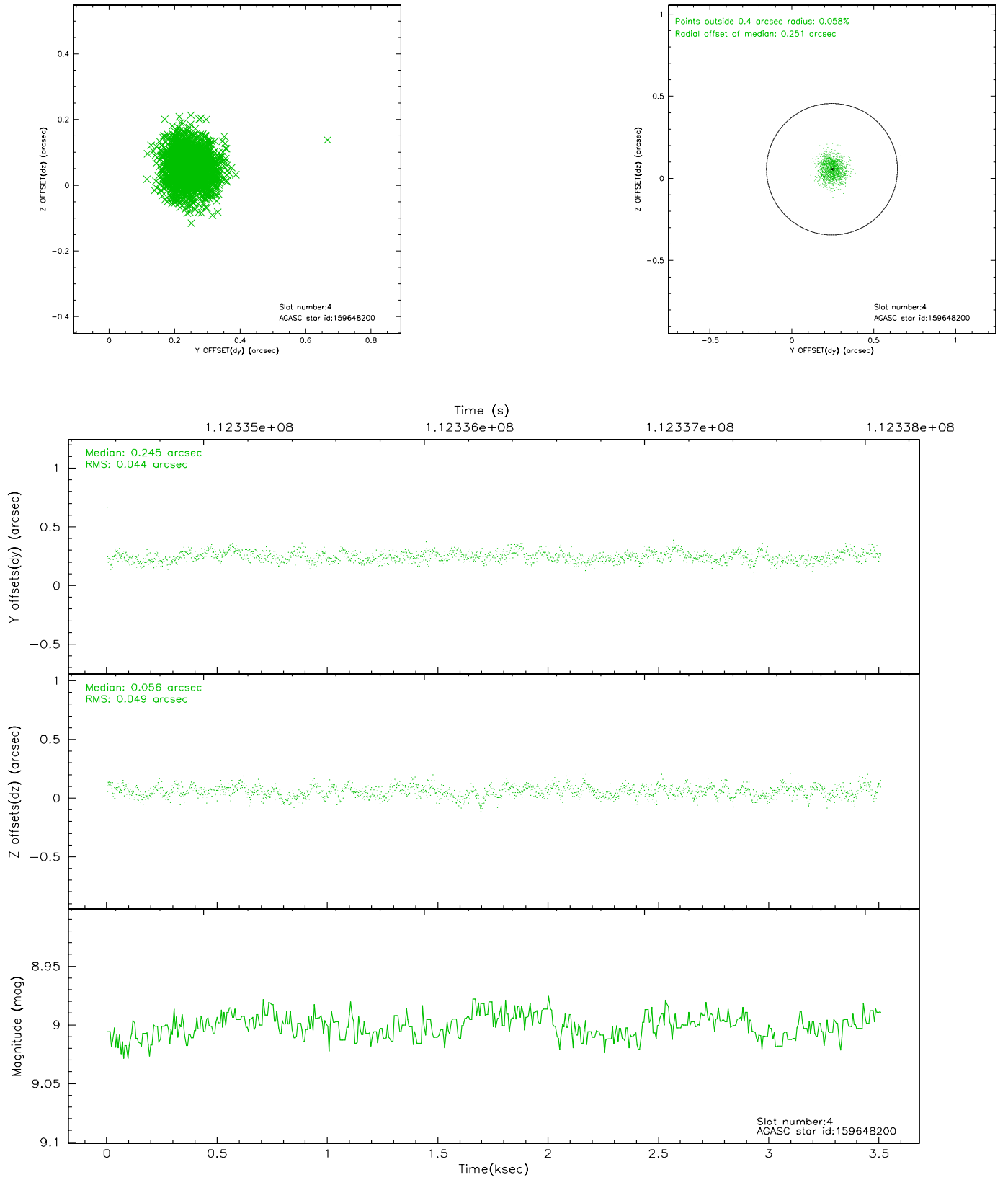
Slot Statistics

slot	status	id	mag	n_pts	med_dy	med_dz	dr1	dr2	ra	dec	mean_y	mean_z
0	FID	ACIS-S-2	7.11	856	-0.002	0.029	0.006	0.010	0.000000	0.000000	-754.50	-1728.30
1	FID	ACIS-S-4	7.19	856	-0.107	-0.007	0.005	0.008	0.000000	0.000000	2157.86	178.29
2	FID	ACIS-S-5	7.24	856	0.078	-0.013	0.006	0.010	0.000000	0.000000	-1804.94	174.00
3	GUIDE	160041584	8.30	1711	-0.207	0.117	0.109	0.172	35.520684	20.487368	1569.96	-1270.87
4	GUIDE	159648200	9.00	1711	0.245	0.056	0.070	0.111	35.884434	19.632064	-1737.46	-1487.18
5	GUIDE	160053080	9.99	1709	-0.146	-0.134	0.114	0.180	34.798803	20.315686	1744.27	1234.92
6	GUIDE	159657776	9.76	1712	0.169	0.094	0.088	0.140	35.413458	19.775258	-752.18	-127.92
7	GUIDE	160040824	9.15	1711	-0.050	-0.131	0.095	0.145	35.134919	20.124635	735.35	373.69

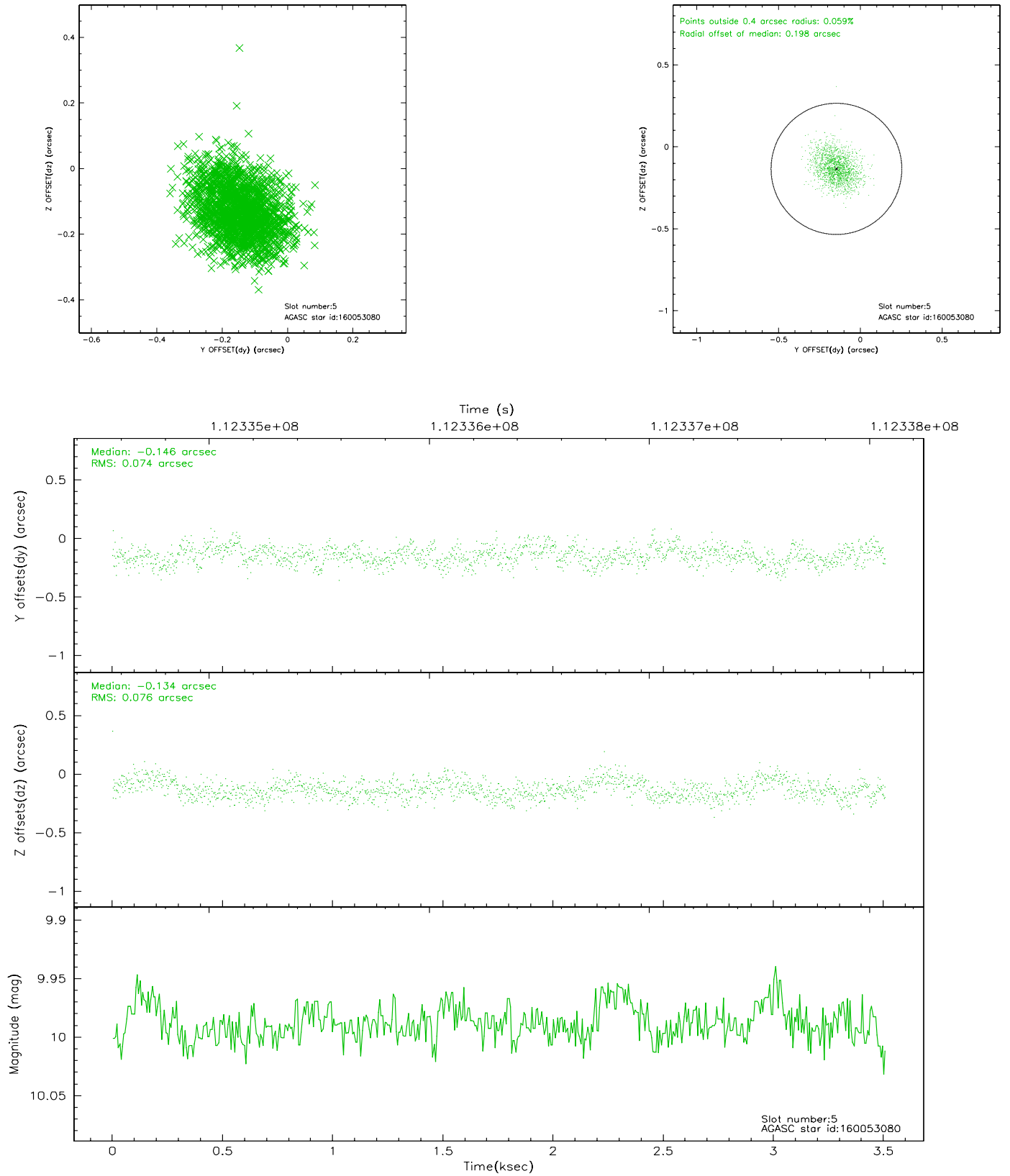
2.4.1 Slot 3



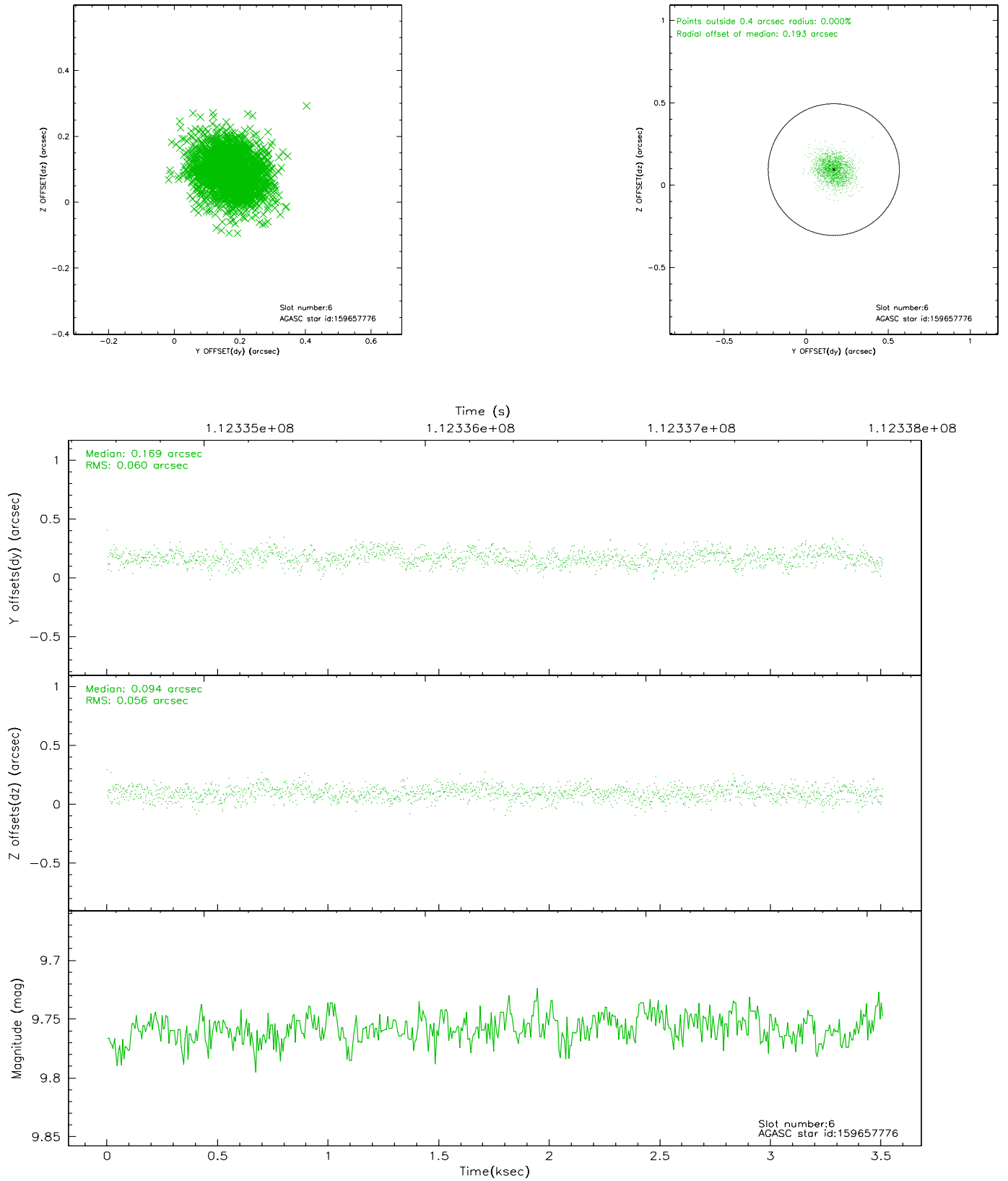
2.4.2 Slot 4



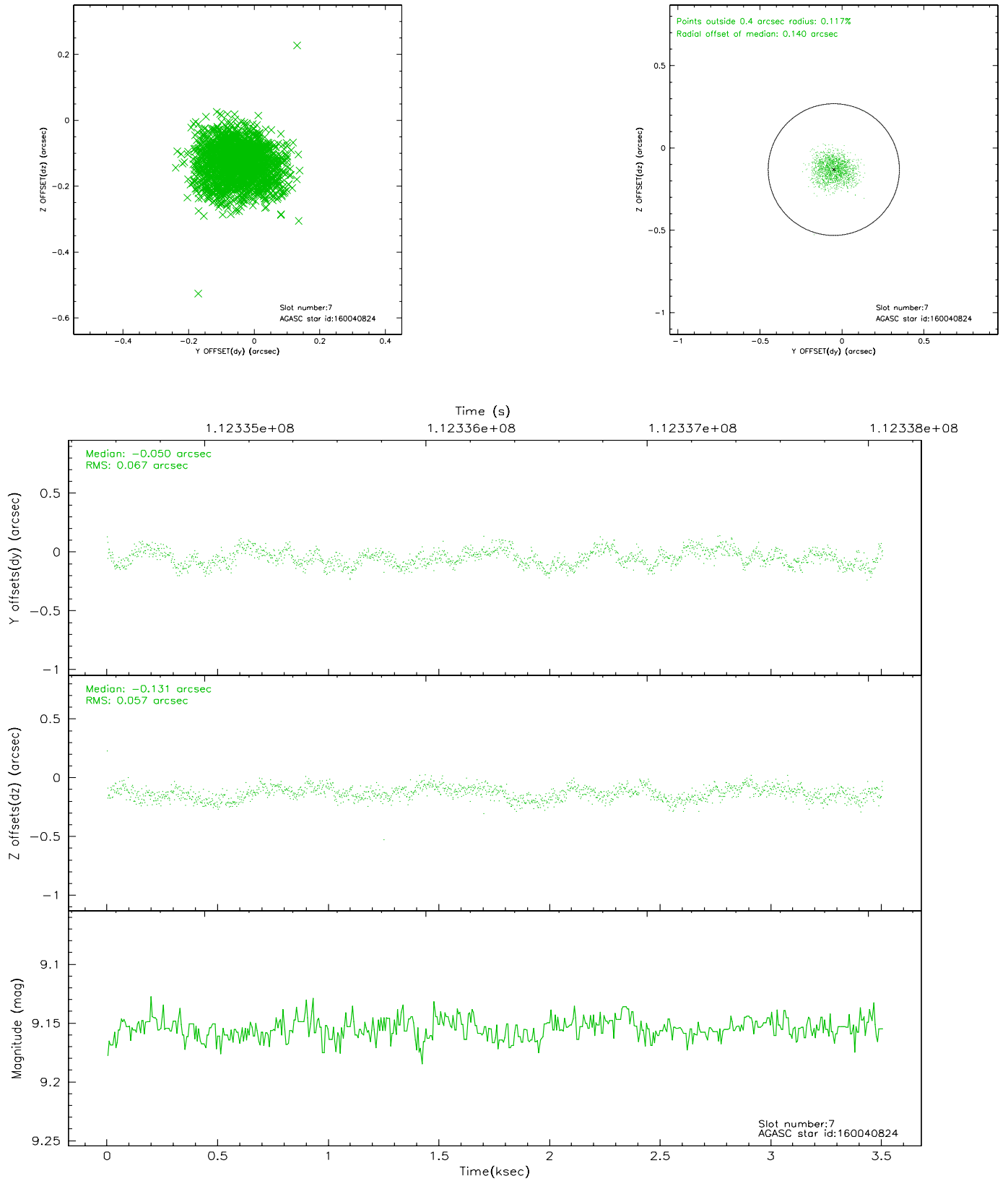
2.4.3 Slot 5



2.4.4 Slot 6

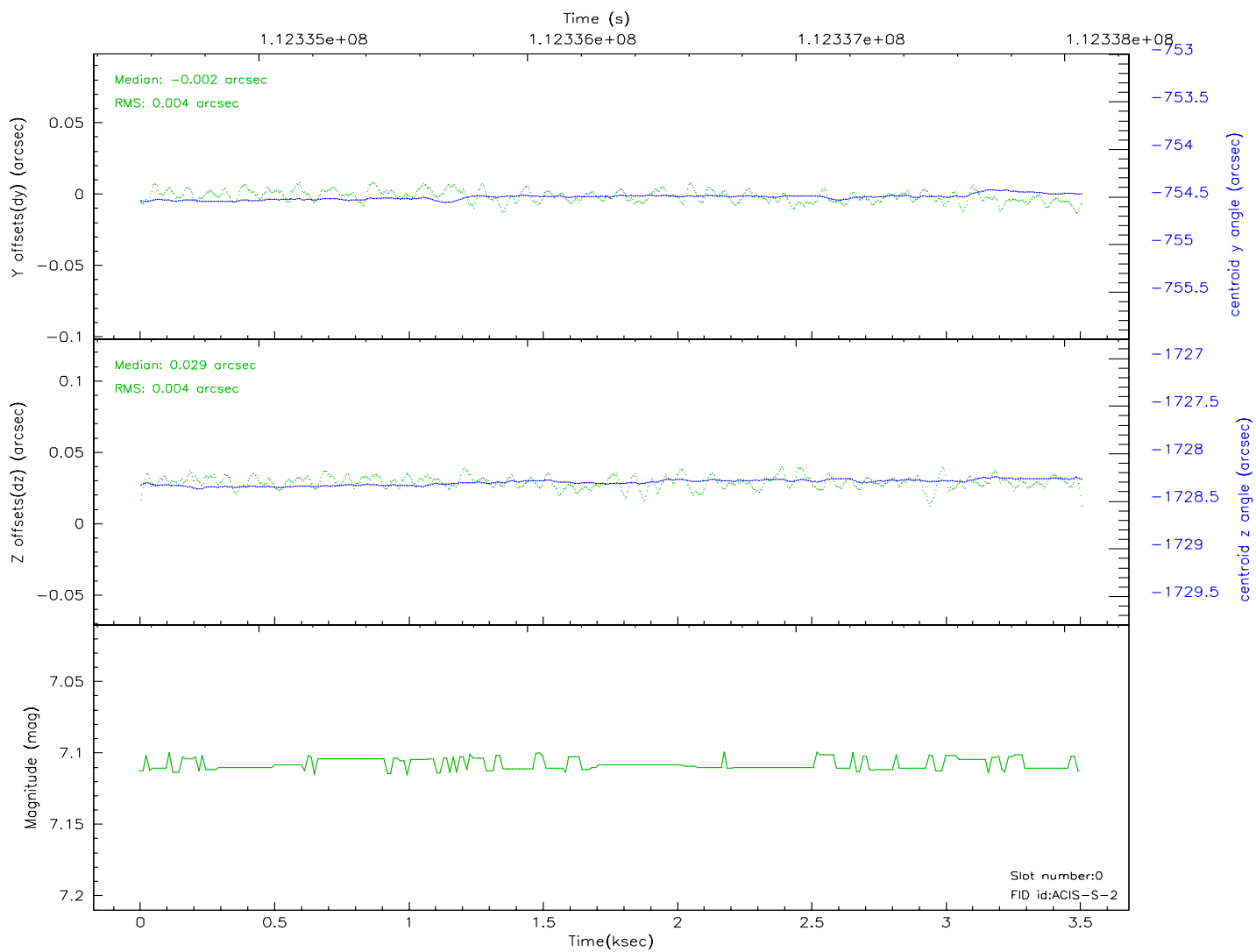
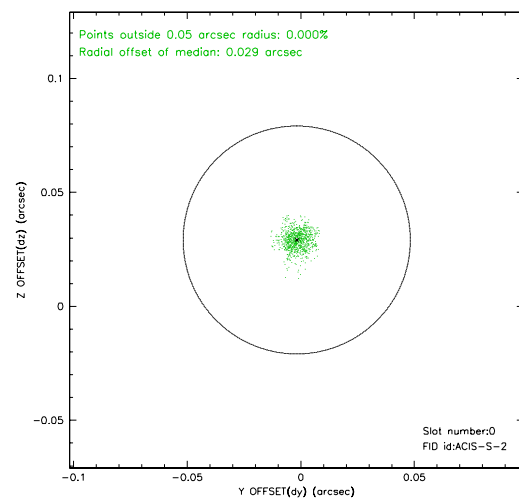
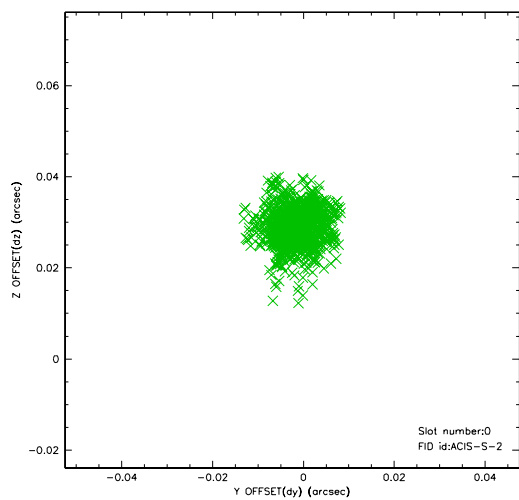


2.4.5 Slot 7

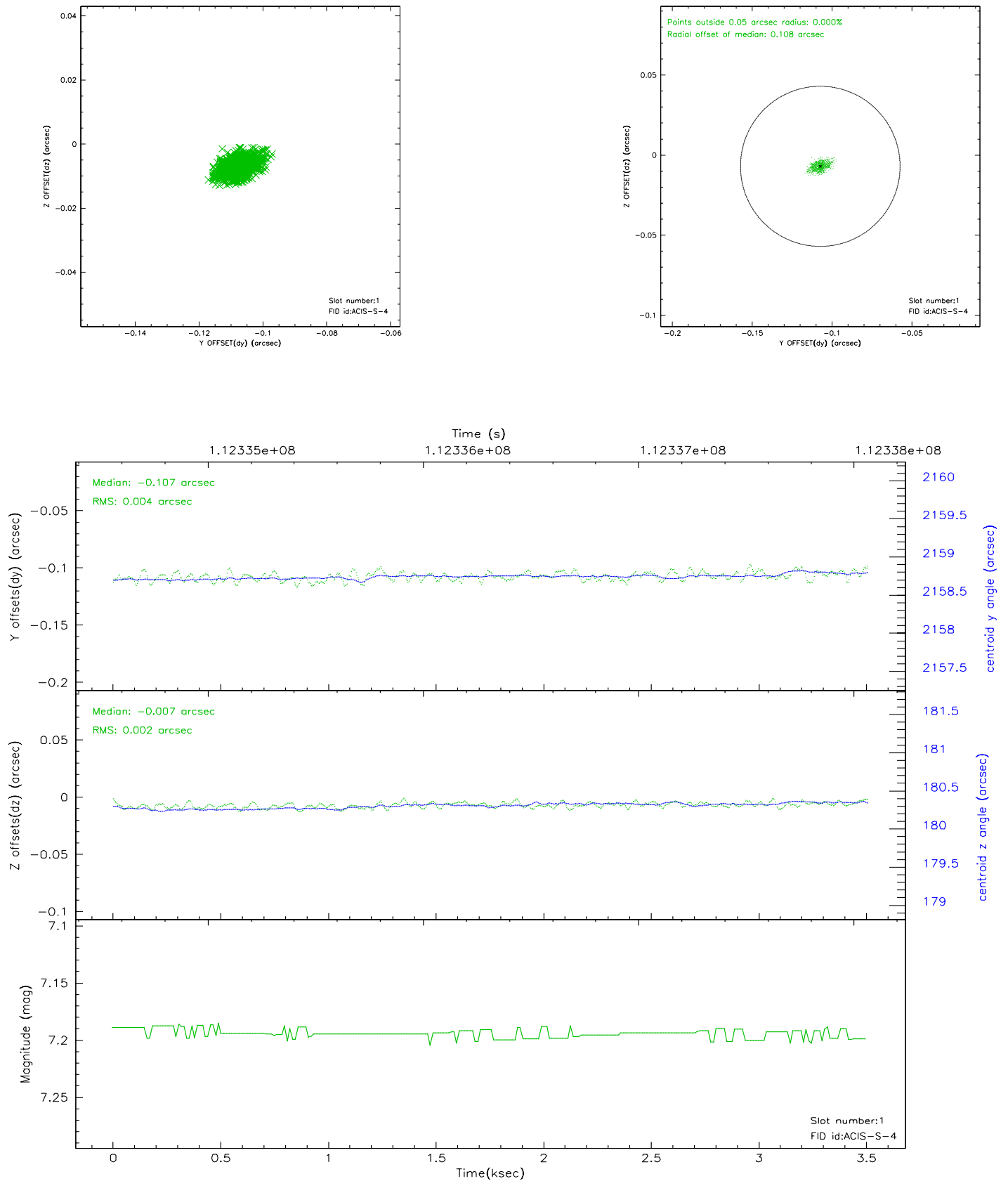


2.5 FID Slots

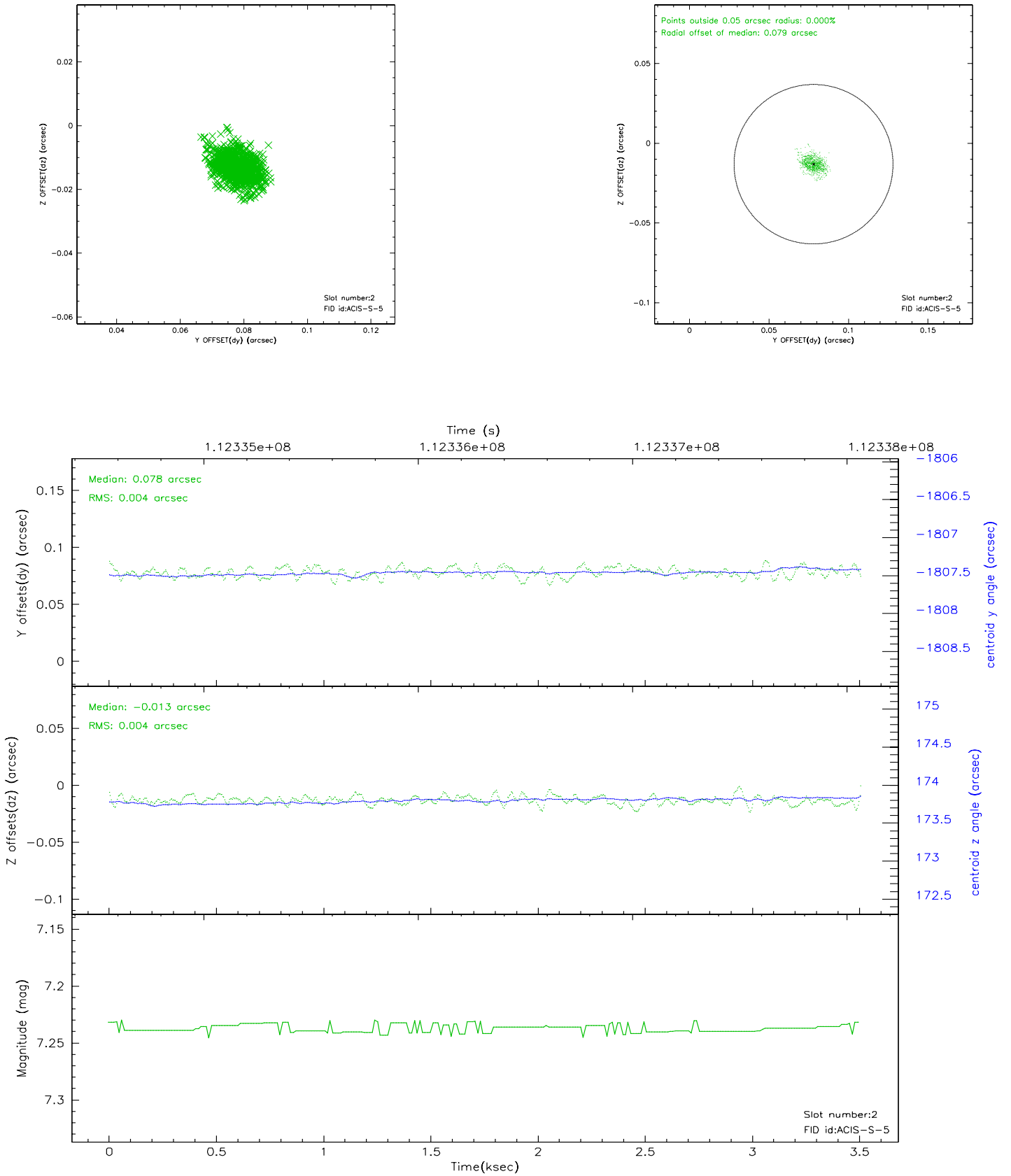
2.5.1 Slot 0



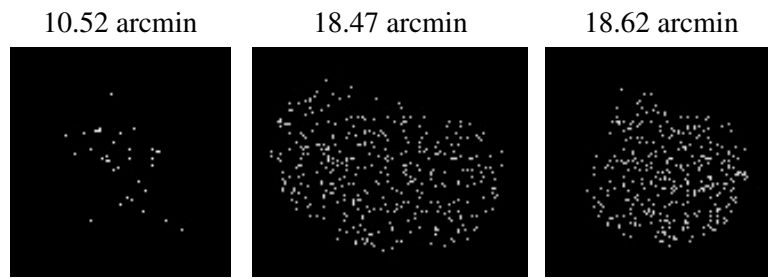
2.5.2 Slot 1



2.5.3 Slot 2



3 Point Sources



A Summary

A.1 Status

V&V Scientist	Jen Lauer
V&V Date (YYYY-MM-DD)	2006.12.15
V&V Edition	1
V&V Disposition and Status	OK
V&V Charge Time	2.95

A.2 Comments