

V&V Reference Report

L2 ASCDS Version : 8.4.5

Observation 2115 - L2 Version 3
Chandra X-Ray Center

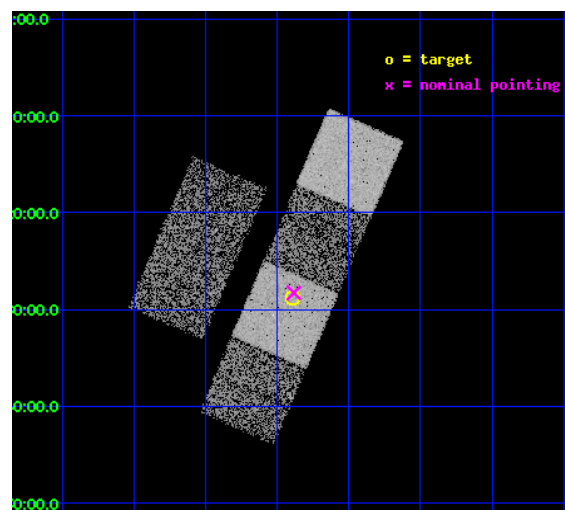
L2 Processing Date : Oct 7 2012

Contents

1	Front	2
2	OBI	3
2.1	OBI	3
2.1.1	Images	3
2.1.2	Bias	3
2.1.3	Parameters	4
2.1.4	Events	4
2.2	Compared Parameters	5
2.3	Aspect	6
2.4	Star Slots	9
2.4.1	Slot 3	9
2.4.2	Slot 4	10
2.4.3	Slot 5	11
2.4.4	Slot 6	12
2.4.5	Slot 7	13
2.5	FID Slots	14
2.5.1	Slot 0	14
2.5.2	Slot 1	15
2.5.3	Slot 2	16
A	Summary	17
A.1	Status	17
A.2	Comments	17

1 Front

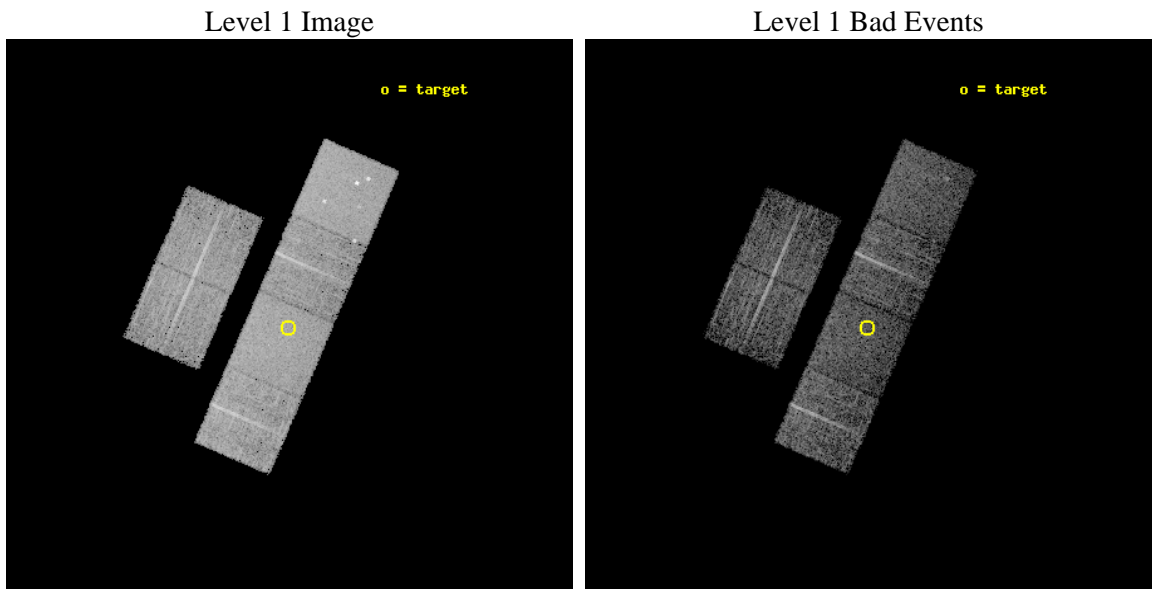
seq_num	700305	Sequence number
obs_id	2115	Observation id
title	PUBLIC OBSERVATIONS OF A WELL-DEFINED SAMPLE OF BAL QSOs FROM THE LARGE BRIGHT QUASAR SURVEY: REMOVING THE BARRIERS	Proposal title
observer	Prof. William Brandt	Principal investigator
object	LBQS 2350-0045A	Source name
dtcycle	0	
cycle	P	events from which exps? Prim/Second/Both
ra_targ	358.222917	Observer's specified target RA [deg]
dec_targ	-0.480861	Observer's specified target Dec [deg]
ra_nom	358.22072937623	Nominal RA [deg]
dec_nom	-0.47145303760081	Nominal Dec [deg]
roll_nom	113.37397155647	Nominal Roll [deg]
revision	3	Processing version of data
ontime	5852.7999781966	Sum of GTIs [s]
livetime	5778.6883007396	Livetime [s]
ontime2	5852.7999781966	Sum of GTIs [s]
ontime3	5852.7999781966	Sum of GTIs [s]
ontime5	5852.7999781966	Sum of GTIs [s]
ontime6	5852.7999781966	Sum of GTIs [s]
ontime7	5852.7999781966	Sum of GTIs [s]
ontime8	5852.7999781966	Sum of GTIs [s]
l2events	57149	Number of level 2 events



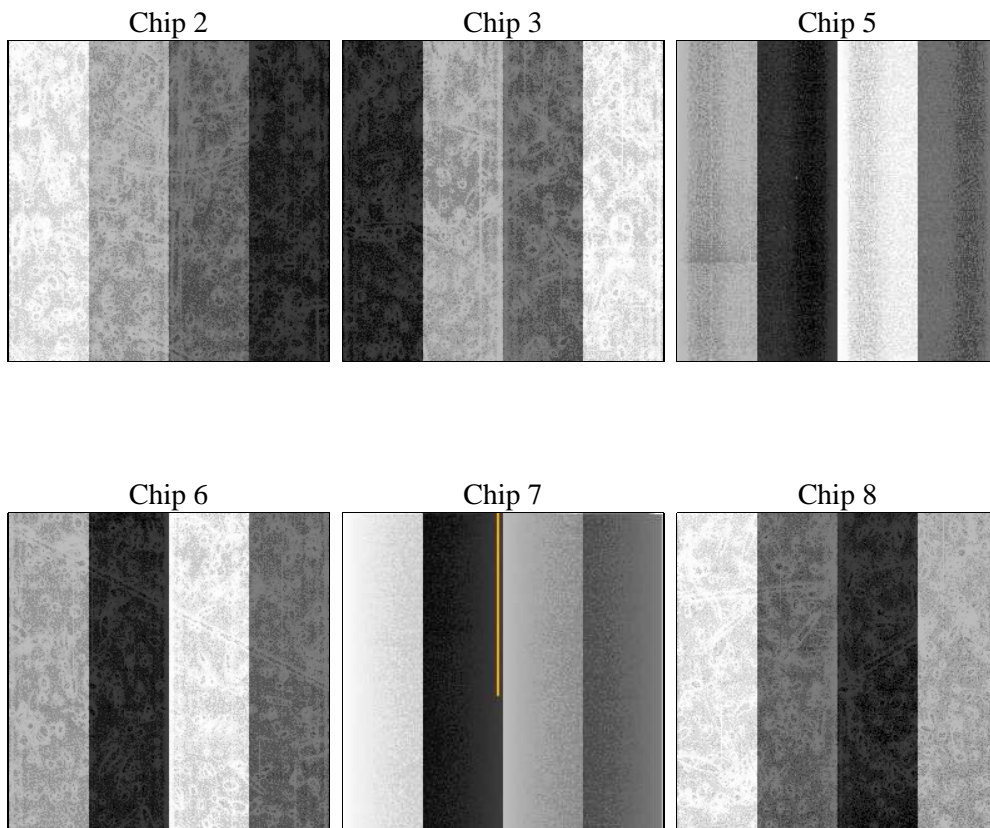
2 OBI

2.1 OBI

2.1.1 Images



2.1.2 Bias



2.1.3 Parameters

obi_num	5	Obi number	sched_exp_time	6000.000000	[s] Scheduled observation exposure time
ascdsver	8.4.5	Processing system revision	ontime	5852.7999781966	Sum of GTIs [s]
caldsver	4.5.2	 	ontime2	5852.7999781966	Sum of GTIs [s]
date	2012-10-07T11:28:00	Date and time of file creation	ontime3	5852.7999781966	Sum of GTIs [s]
revision	3	Processing version of data	ontime5	5852.7999781966	Sum of GTIs [s]
			ontime6	5852.7999781966	Sum of GTIs [s]
			ontime7	5852.7999781966	Sum of GTIs [s]
			ontime8	5852.7999781966	Sum of GTIs [s]
			l1events	266102	Number of level 1 events

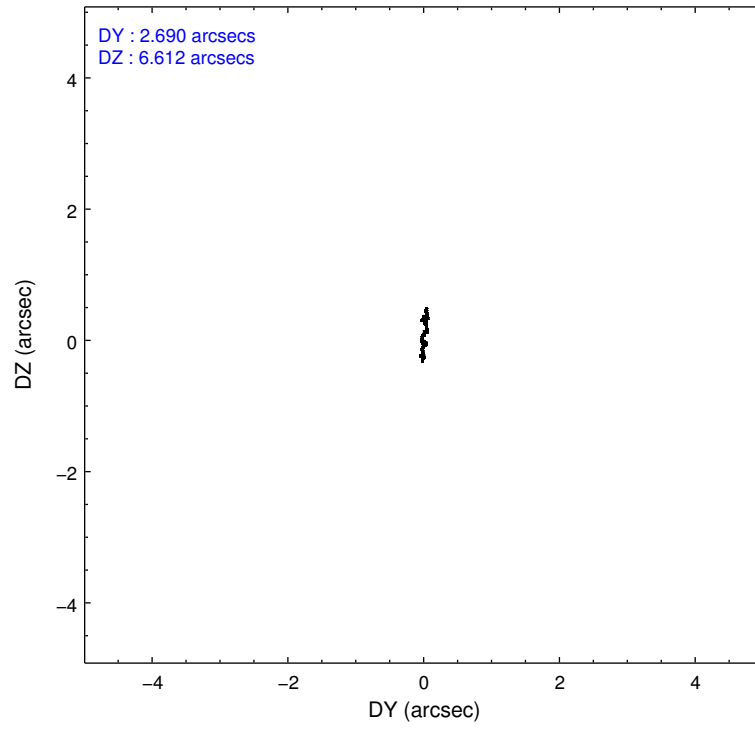
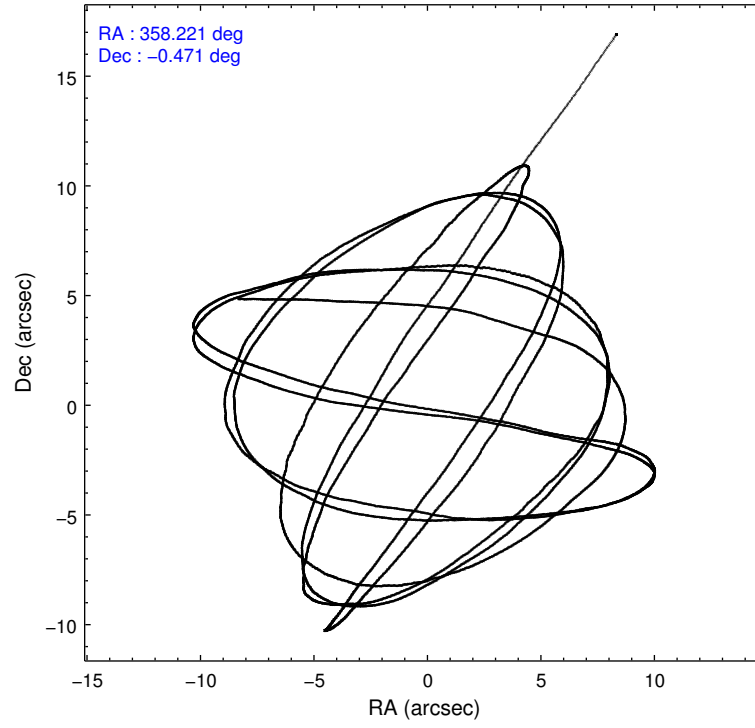
2.1.4 Events

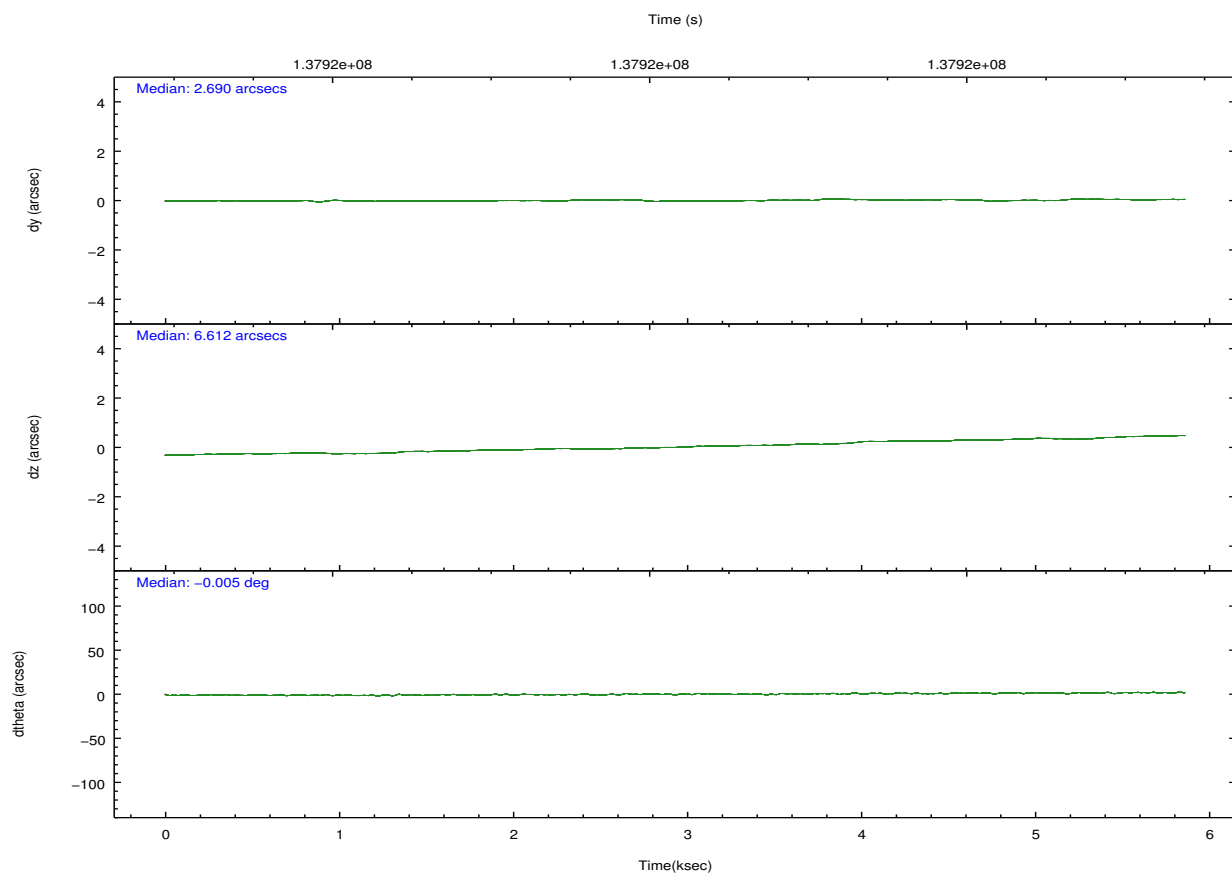
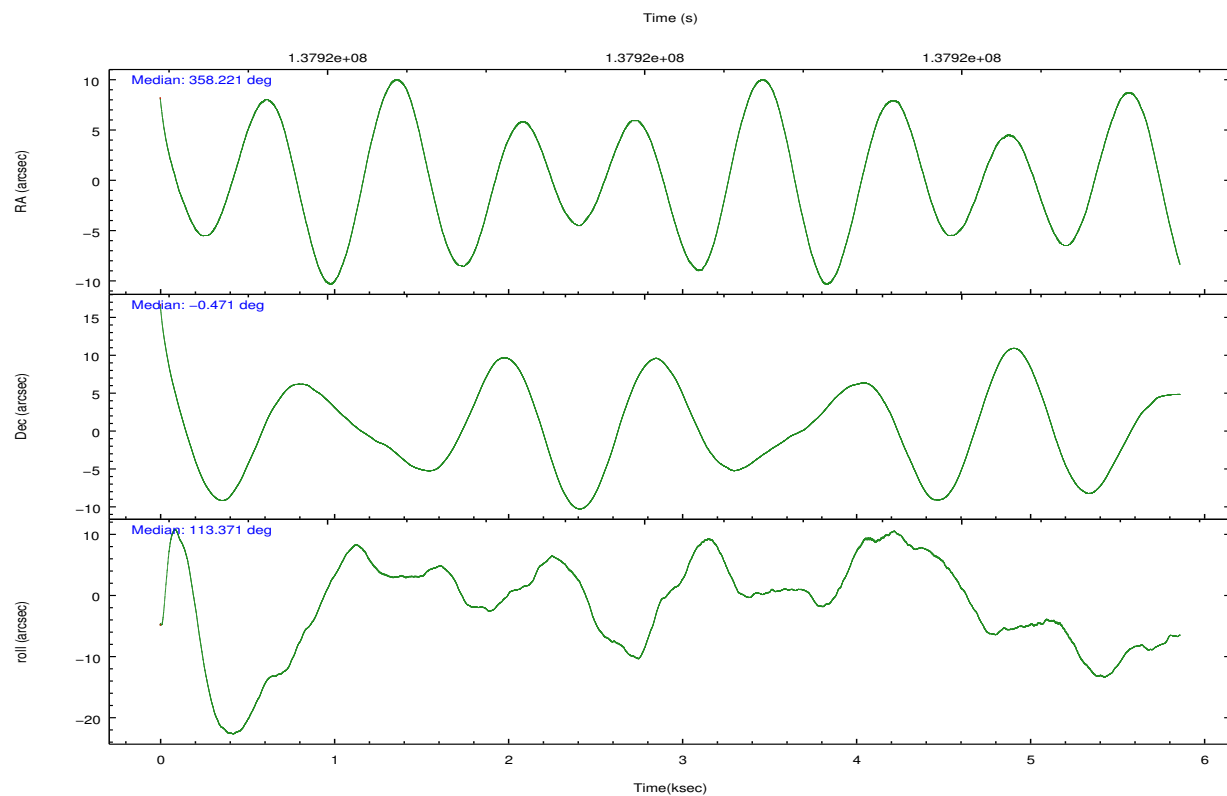
	ccd 2	ccd 3	ccd 5	ccd 6	ccd 7	ccd 8		ccd 2	ccd 3	ccd 5	ccd 6	ccd 7	ccd 8
level 1 events	36994	37133	56955	38303	49151	47566	grade 0 events	1743	1756	4603	1762	1894	3252
rejected events	32922	33082	30650	33969	29235	37601		4%	4%	8%	4%	3%	6%
rejected %	88%	89%	53%	88%	59%	79%	grade 1 events	23	11	233	17	47	29
								0%	0%	0%	0%	0%	0%
							grade 2 events	923	848	7383	924	4074	2193
								2%	2%	12%	2%	8%	4%
							grade 3 events	394	410	1063	458	1916	1141
								1%	1%	1%	1%	3%	2%
							grade 4 events	408	382	1011	446	1812	1110
								1%	1%	1%	1%	3%	2%
							grade 5 events	1367	1573	4057	1607	4829	2063
								3%	4%	7%	4%	9%	4%
							grade 6 events	709	768	13008	850	10803	2521
								1%	2%	22%	2%	21%	5%
							grade 7 events	31427	31385	25597	32239	23776	35257
								84%	84%	44%	84%	48%	74%

2.2 Compared Parameters

Parameter	Planned	Actual	Parameter	Planned	Actual
Instrument	ACIS	ACIS	Obspar format version number	7	7
Detector	ACIS-235678	ACIS-235678	Obspar file type	PREDICTED	ACTUAL
Grating	NONE	NONE	Obspar update status	NONE	UPDATED
Data mode	FAINT	FAINT	Number of optional ACIS chips dropped	0	0
Observation mode	POINTING	POINTING	On-chip summing requested	N	N
[deg] Pointing RA	358.242770	358.2207293762334	Subarray requested	NONE	NONE
[deg] Pointing Dec	-0.487394	-0.4714530376008115	Alternating exposures requested	N	N
[deg] Pointing Roll	113.217567	113.3739715564697	[s] Primary exposure time	0.000000	3.2
[mm] SIM focus pos	-0.684267	-0.6828225247311905			
[mm] SIM defocus	0	0.001444936568705701			
[mm] SIM translation stage pos	-190.132523	-190.1425803651734			
[mm] SIM translation stage offset	0	0.01005778216563158			
[s] Observation start time (MET)	137917090.184000	137916240.60988			
Observation start date	2002-05-16T06:17:06	2002-05-16T06:04:00			
[s] Observation end time (MET)	137923090.184000	137923966.54769			
Observation end date	2002-05-16T07:57:06	2002-05-16T08:12:46			
Read mode	TIMED	TIMED			

2.3 Aspect



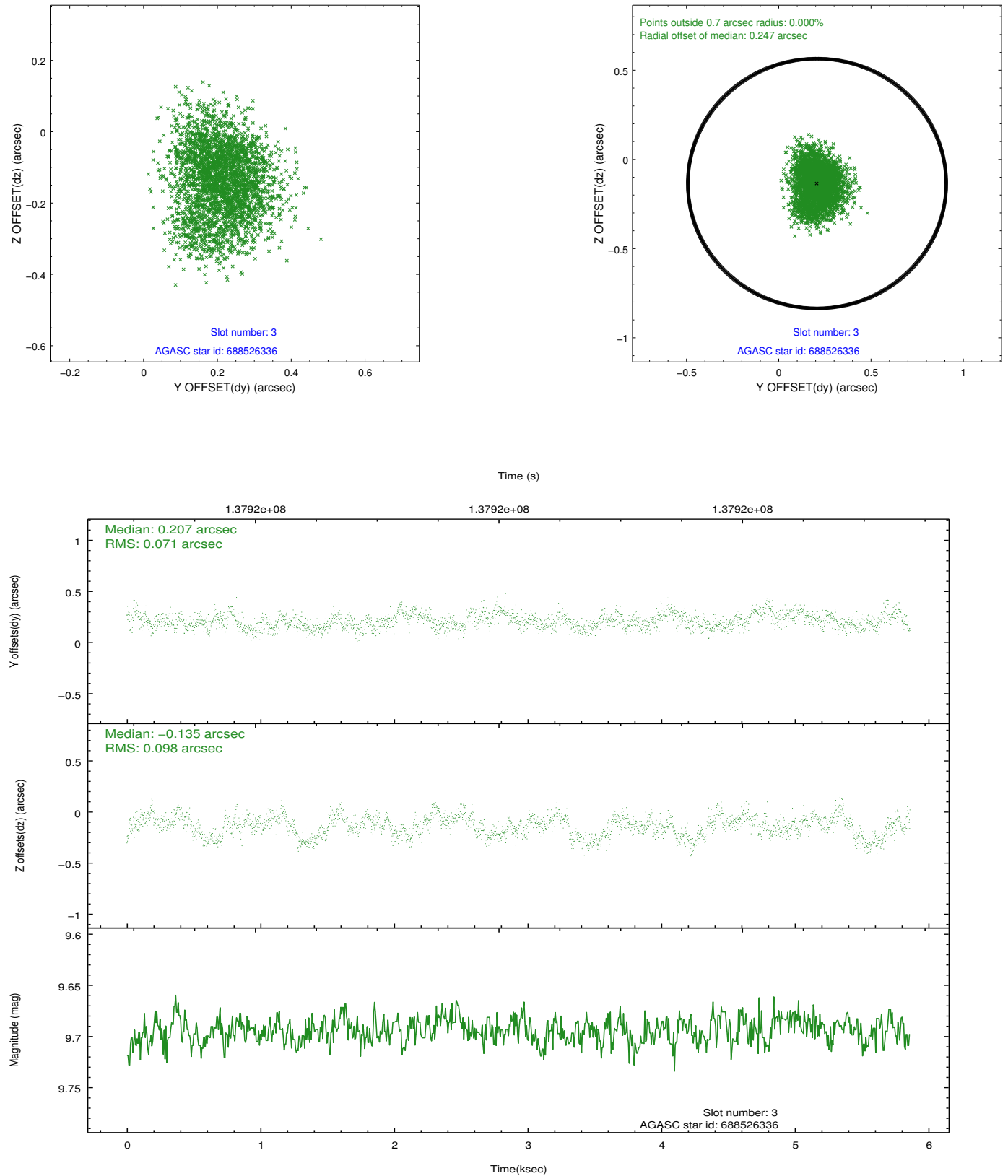


Slot Statistics

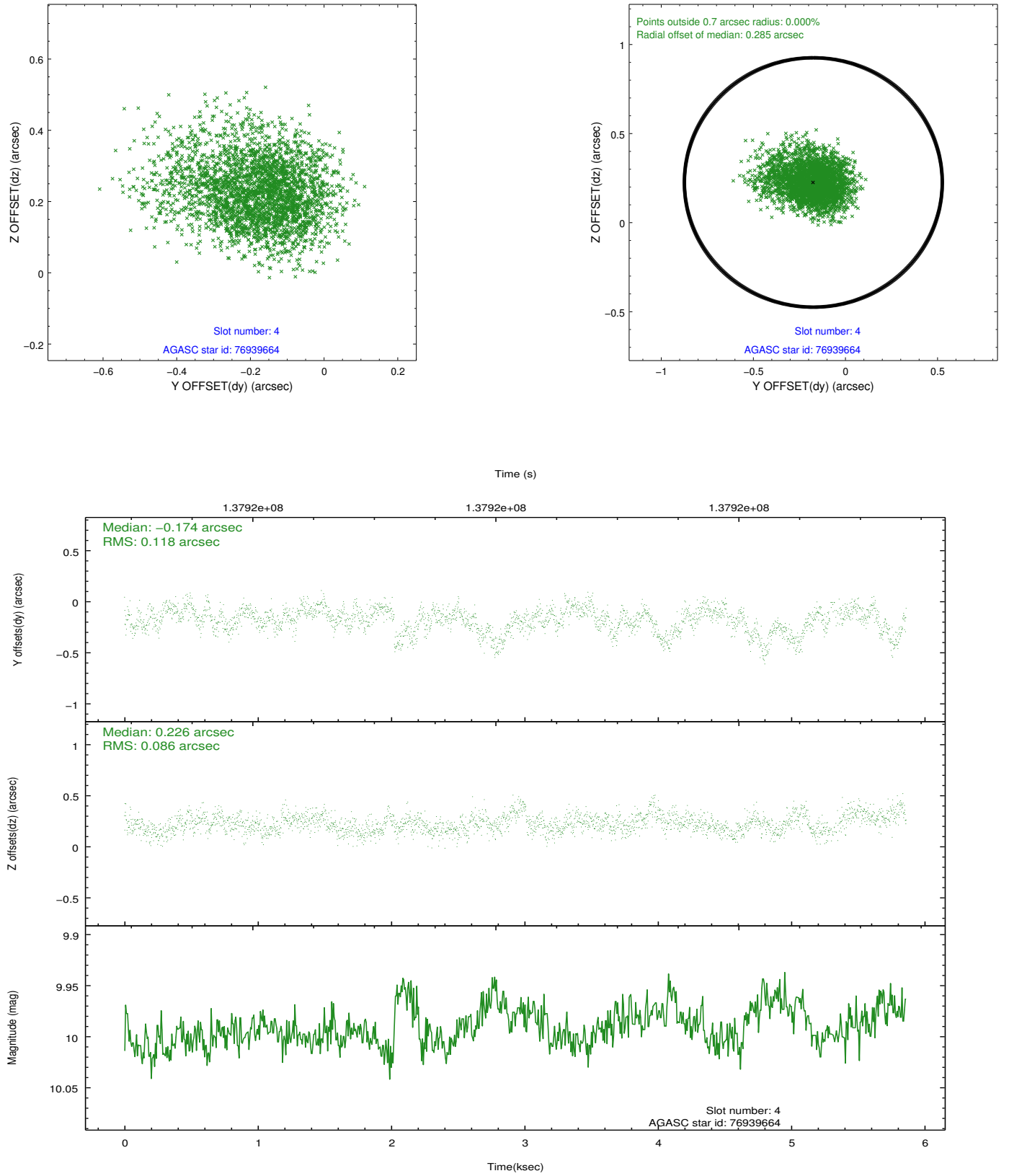
slot	status	id	mag	n_pts	med_dy	med_dz	dr1	dr2	ra	dec	mean_y	mean_z
0	FID	ACIS-S-2	6.90	1428	-0.021	0.029	0.009	0.014	0.000000	0.000000	-755.33	-1727.74
1	FID	ACIS-S-4	7.00	1430	-0.025	0.002	0.007	0.014	0.000000	0.000000	2157.46	179.70
2	FID	ACIS-S-5	6.99	1430	0.015	-0.024	0.008	0.013	0.000000	0.000000	-1806.85	174.46
3	GUIDE	688526336	9.69	2857	0.207	-0.135	0.130	0.207	358.185662	-1.015243	-1665.04	938.05
4	GUIDE	76939664	9.99	2822	-0.174	0.226	0.152	0.259	358.521033	0.226751	1967.22	-1933.30
5	GUIDE	688522920	10.41	2854	-0.132	-0.331	0.154	0.245	357.619208	-0.516313	789.64	2103.27
6	GUIDE	688522200	9.91	2859	0.036	0.235	0.125	0.202	358.964663	-0.559880	-1263.84	-2284.28
7	GUIDE	688523712	10.42	2819	0.070	0.012	0.141	0.233	358.654242	-0.622499	-1031.19	-1170.25

2.4 Star Slots

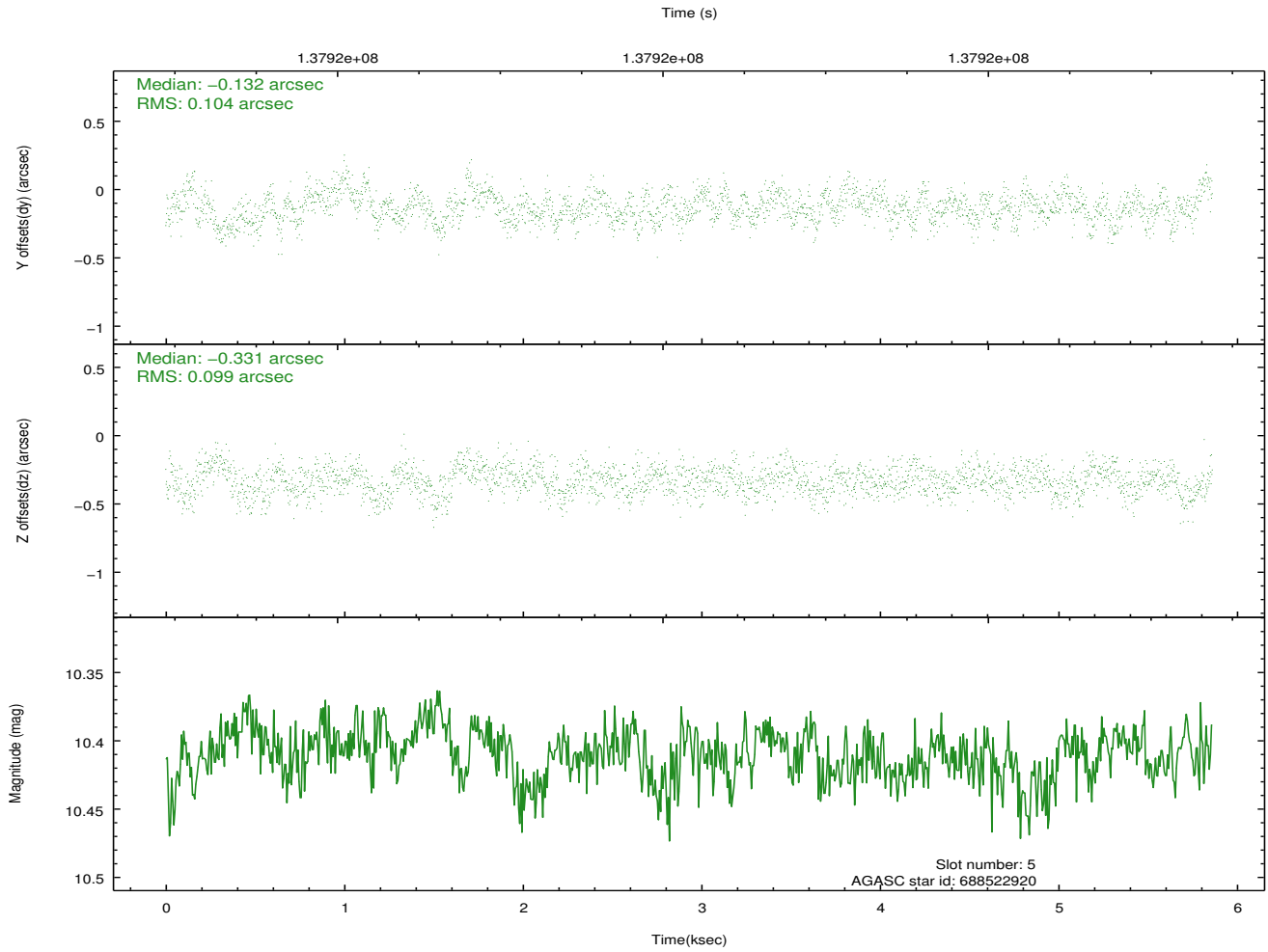
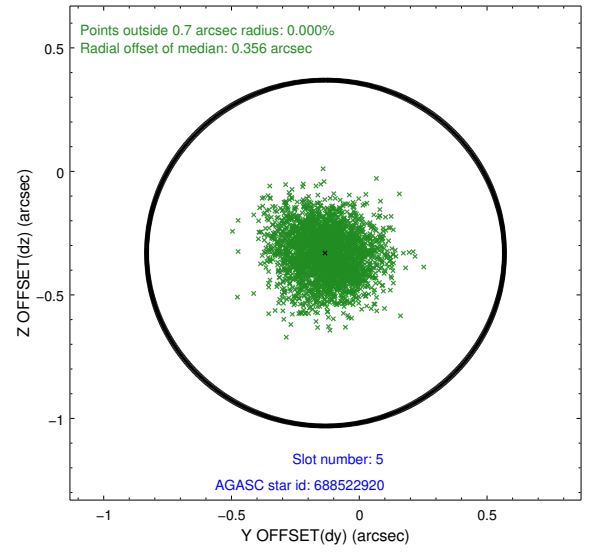
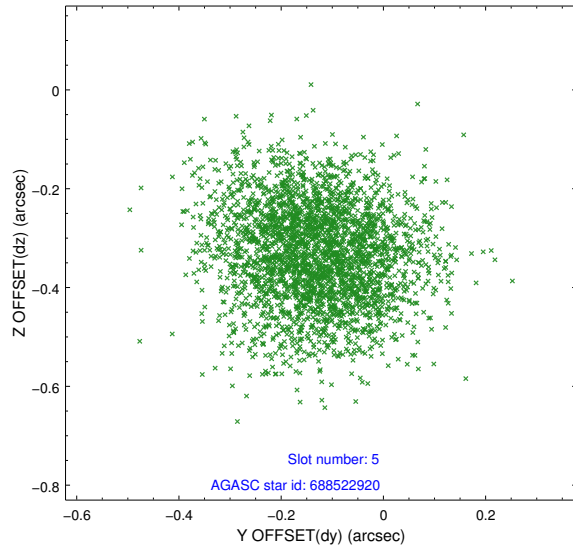
2.4.1 Slot 3



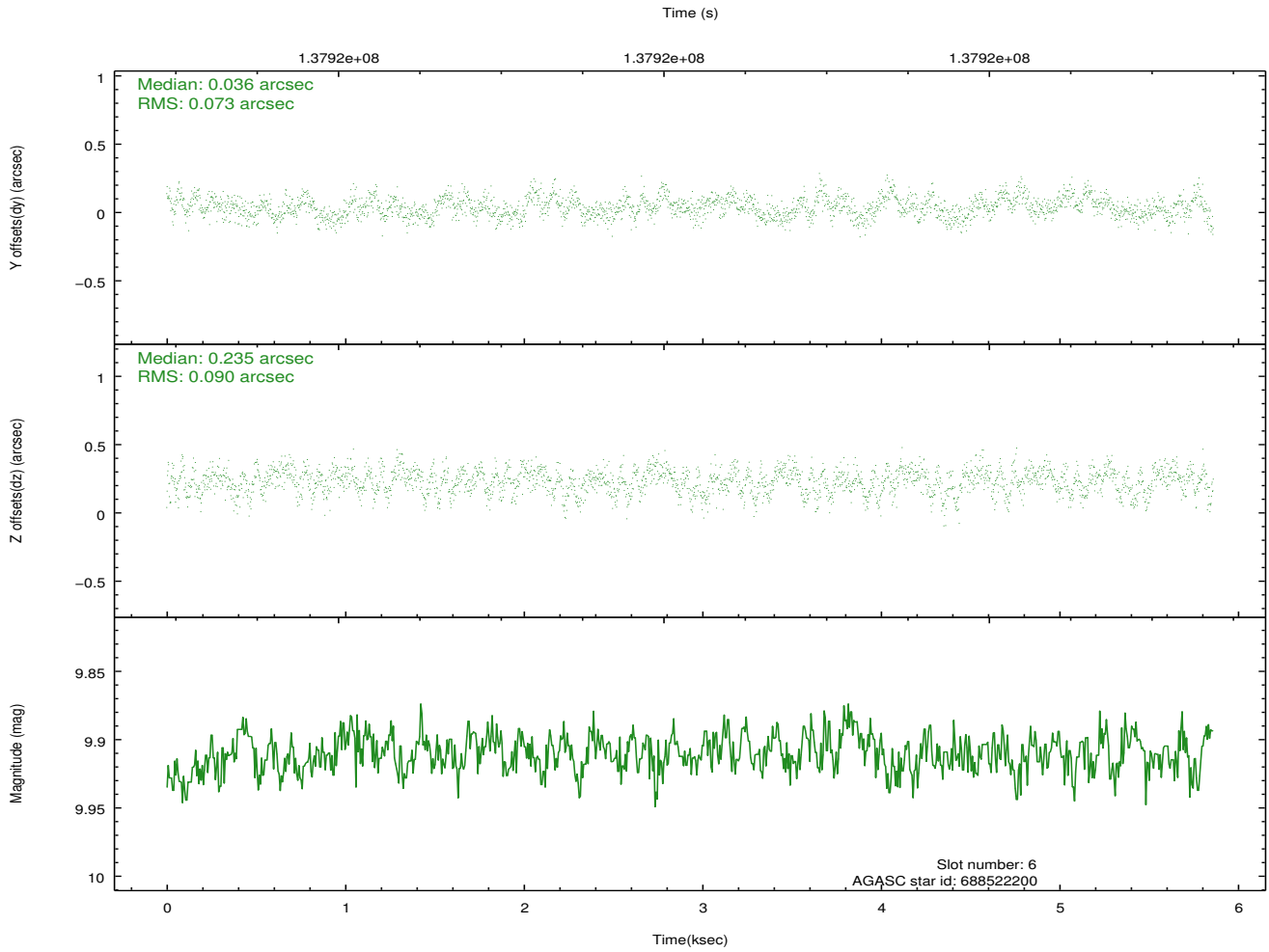
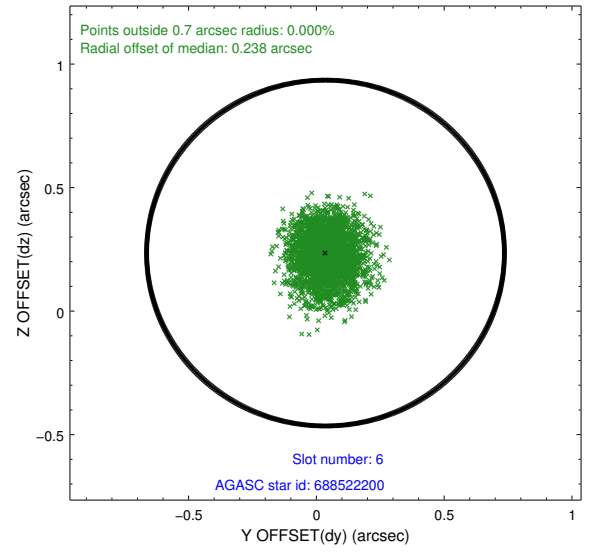
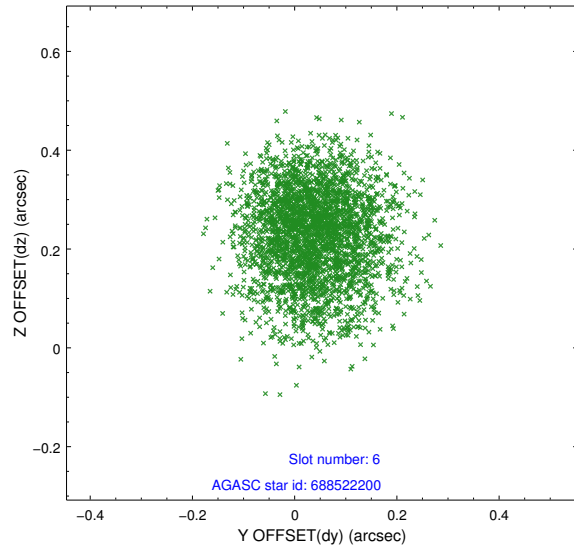
2.4.2 Slot 4



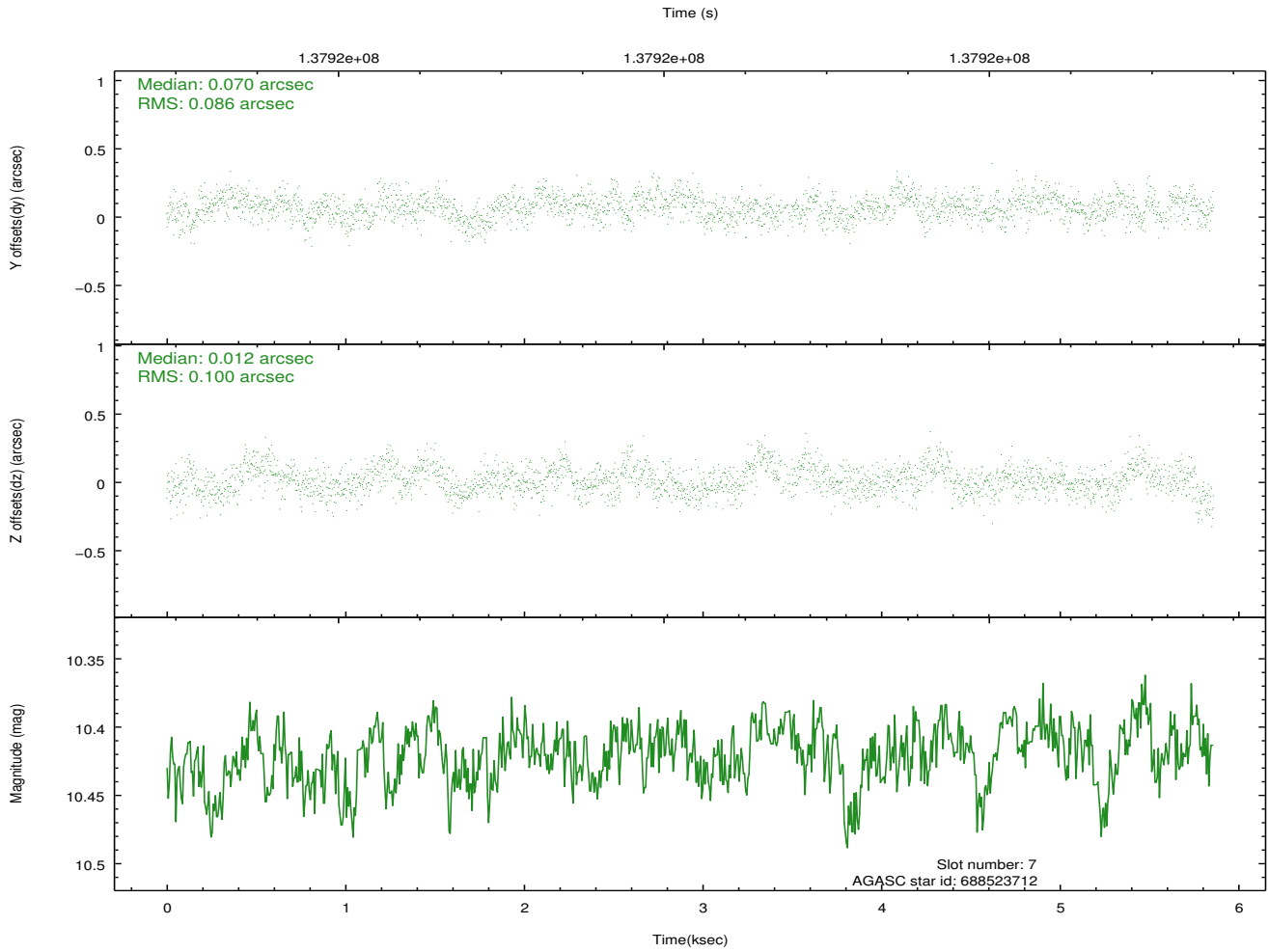
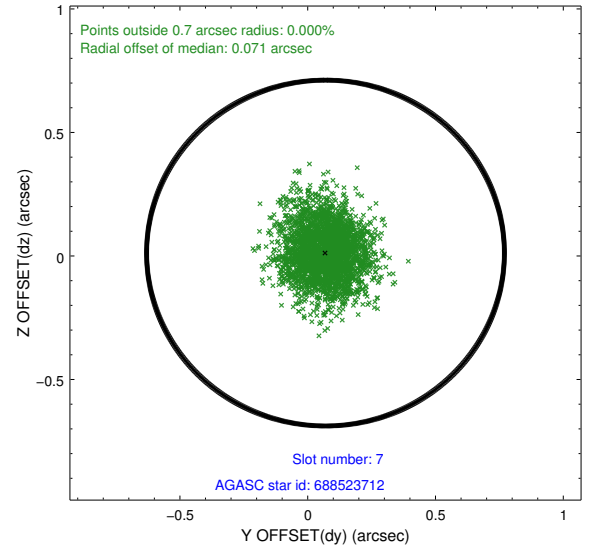
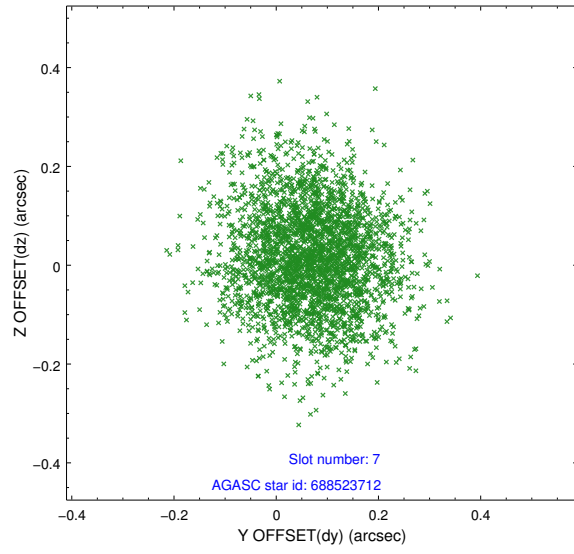
2.4.3 Slot 5



2.4.4 Slot 6

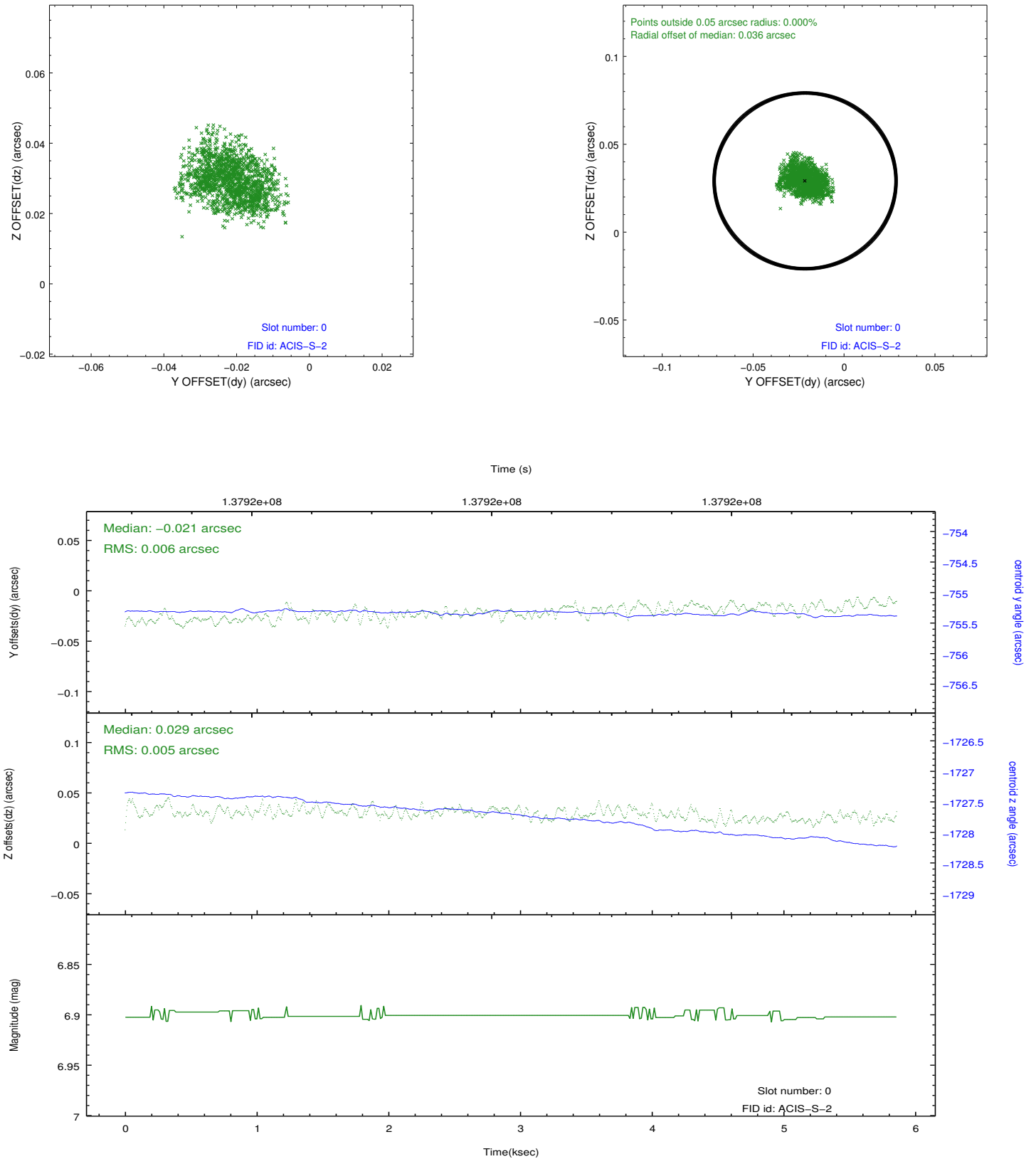


2.4.5 Slot 7

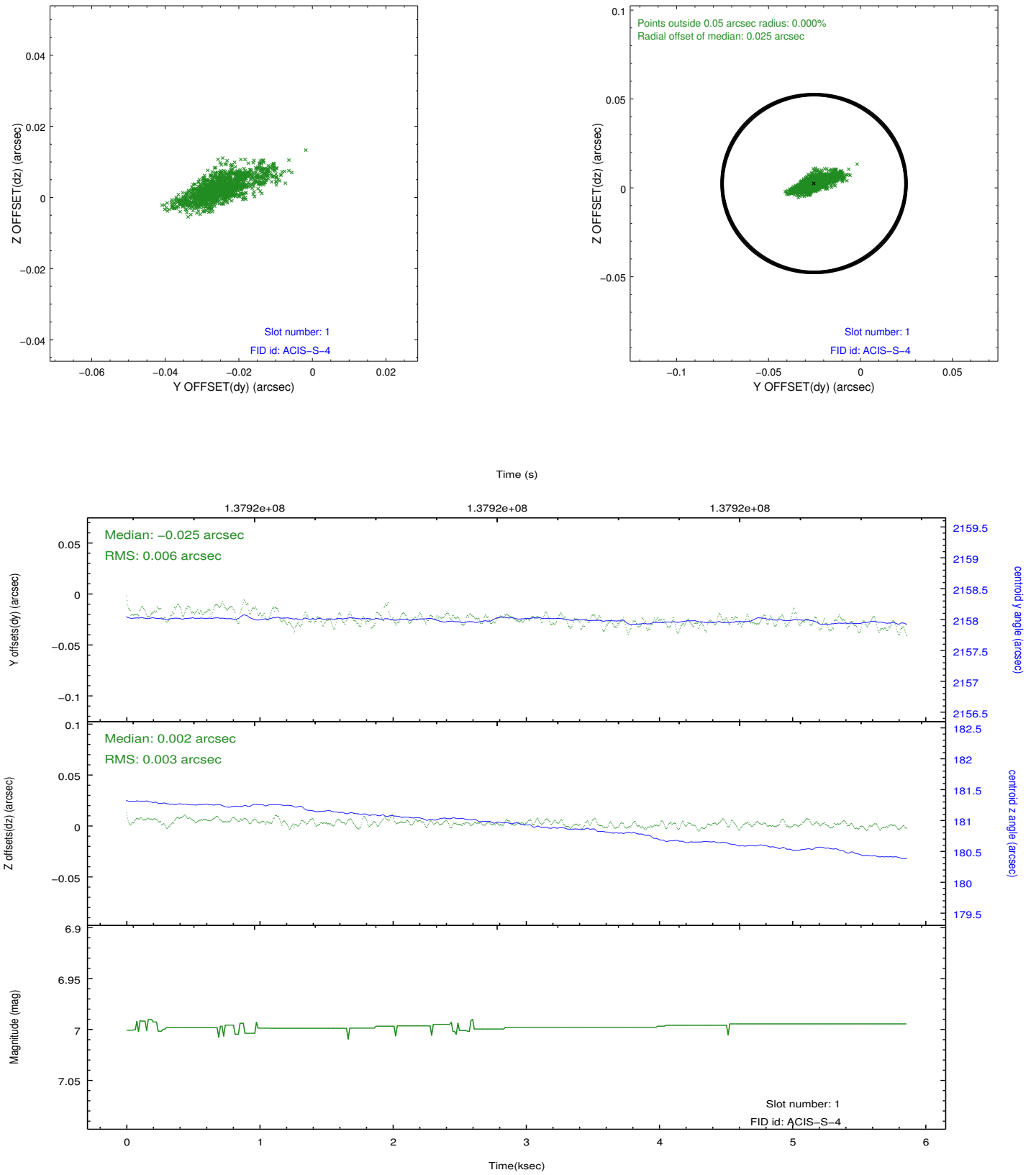


2.5 FID Slots

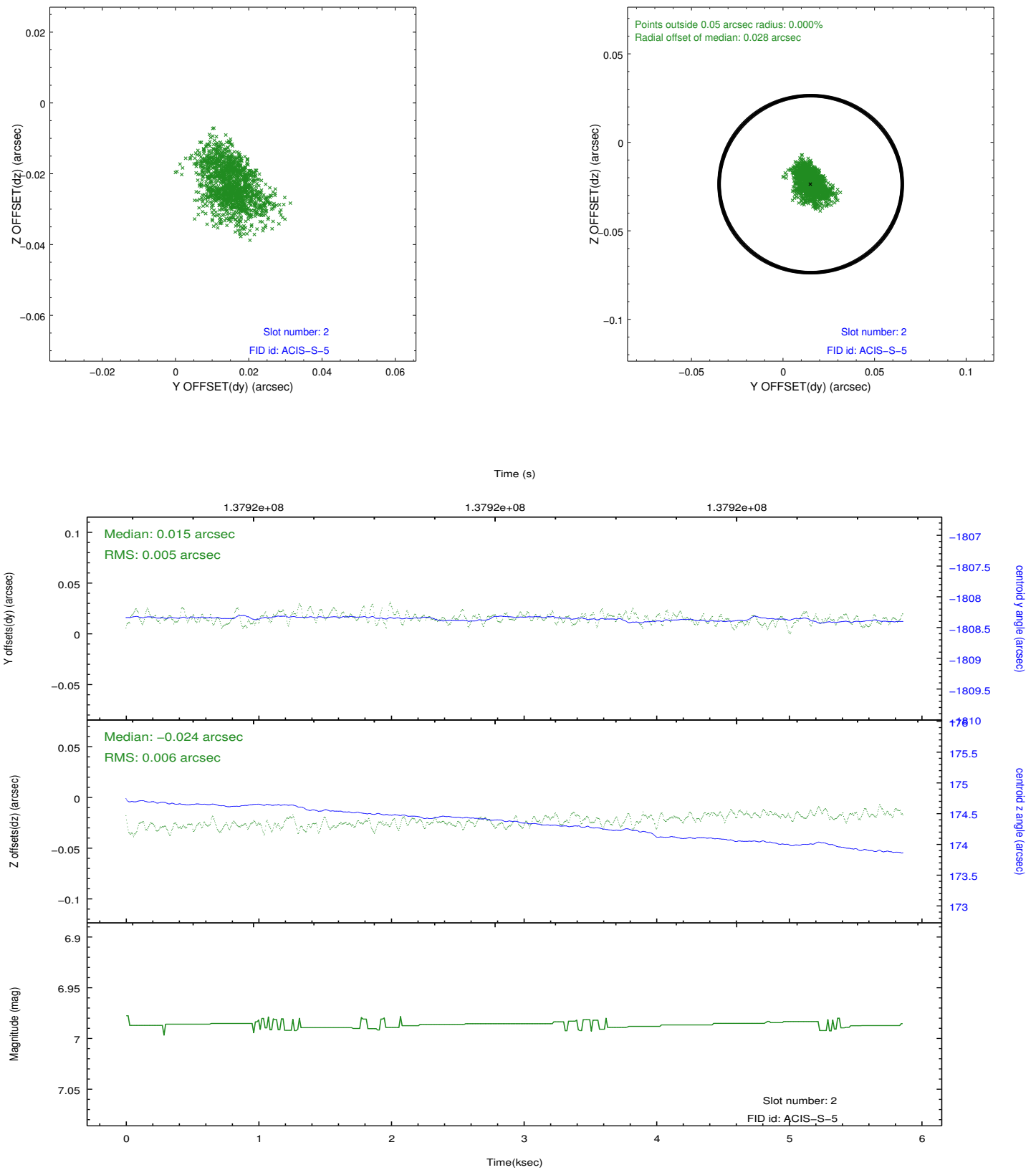
2.5.1 Slot 0



2.5.2 Slot 1



2.5.3 Slot 2



A Summary

A.1 Status

V&V Scientist	Beth Sundheim
V&V Date (YYYY-MM-DD)	2012.10.16
V&V Edition	1
V&V Disposition and Status	OK
V&V Charge Time	5.853

A.2 Comments