

V&V Reference Report

L2 ASCDS Version : 7.6.9

Observation 2113 - L2 Version 001
Chandra X-Ray Center

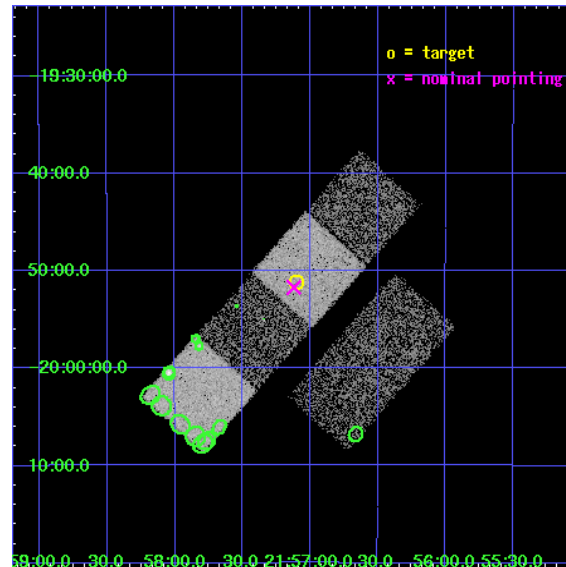
L2 Processing Date : Jan 3 2007

Contents

1	Front	2
2	OBI	3
2.1	OBI	3
2.1.1	Images	3
2.1.2	Bias	3
2.1.3	Parameters	4
2.1.4	Events	4
2.2	Compared Parameters	5
2.3	Aspect	6
2.4	Star Slots	9
2.4.1	Slot 3	9
2.4.2	Slot 5	10
2.4.3	Slot 6	11
2.4.4	Slot 7	12
2.5	FID Slots	13
2.5.1	Slot 0	13
2.5.2	Slot 1	14
2.5.3	Slot 2	15
3	Point Sources	16
A	Summary	17
A.1	Status	17
A.2	Comments	17

1 Front

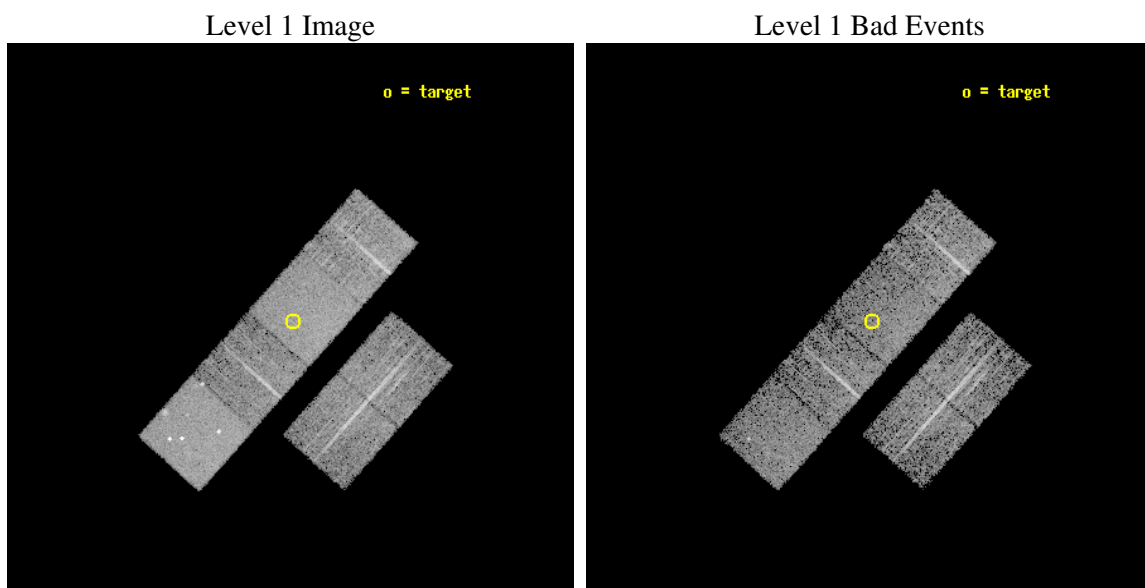
seq_num	700303
obs_id	2113
title	PUBLIC OBSERVATIONS OF A WELL-DEFINED SAMPLE OF BAL QSOS FROM THE LARGE BRIGHT QUASAR SURVEY: REMOVING THE BARRIERS
observer	Prof. William Brandt
object	LBQS 2154-2005
dtcycle	0
cycle	P
ra_targ	329.274583
dec_targ	-19.853917
ra_nom	329.28011160493
dec_nom	-19.862206854637
roll_nom	311.71583055848
revision	3
ontime	5065.6000047177
livetime	5001.4563273198
ontime2	5065.6000047177
ontime3	5065.6000047177
ontime5	5065.6000047177
ontime6	5065.6000047177
ontime7	5065.6000047177
ontime8	5065.6000047177
l2events	51612



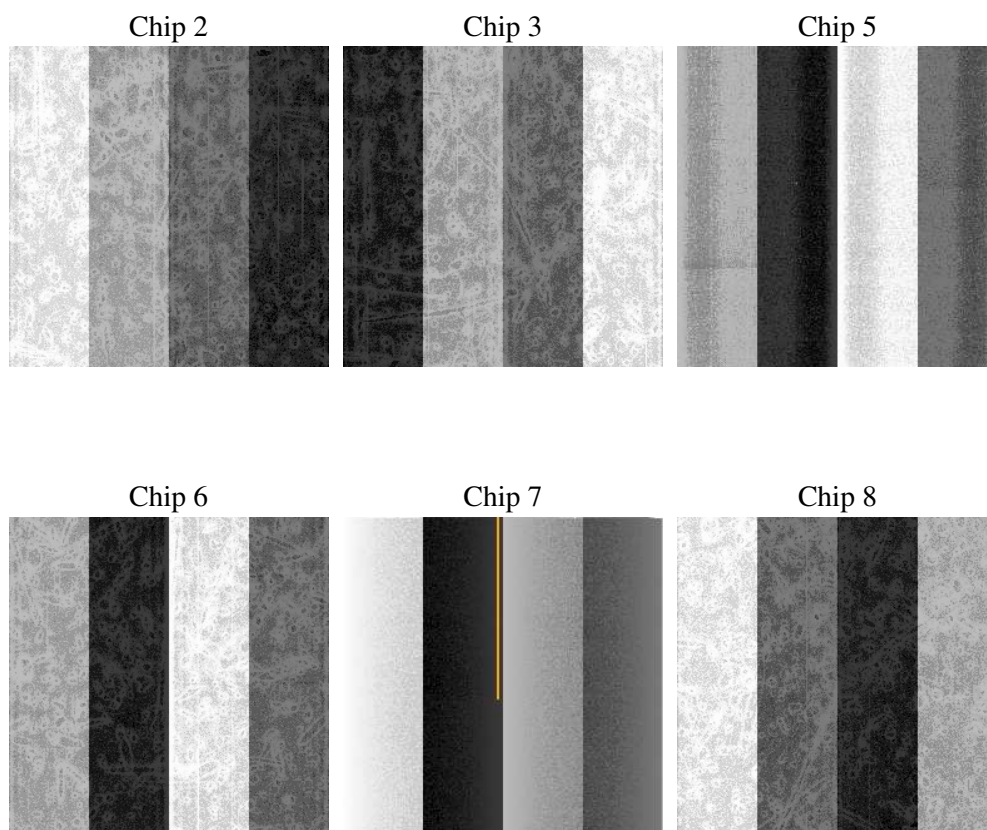
2 OBI

2.1 OBI

2.1.1 Images



2.1.2 Bias



2.1.3 Parameters

obi_num	0
ascdsver	7.6.9
caldsver	3.2.4
date	2007-01-03T20:56:03
revision	3

sched_exp_time	5000.000000
ontime	5068.9296704531
ontime2	5068.9296704531
ontime3	5068.9296704531
ontime5	5068.9296704531
ontime6	5068.9296704531
ontime7	5068.9296704531
ontime8	5068.9296704531
l1events	229027

2.1.4 Events

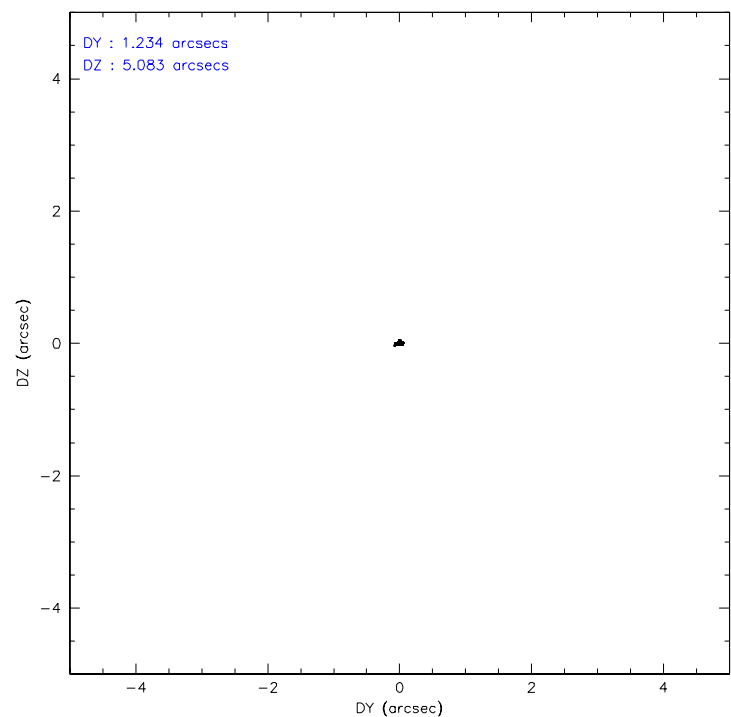
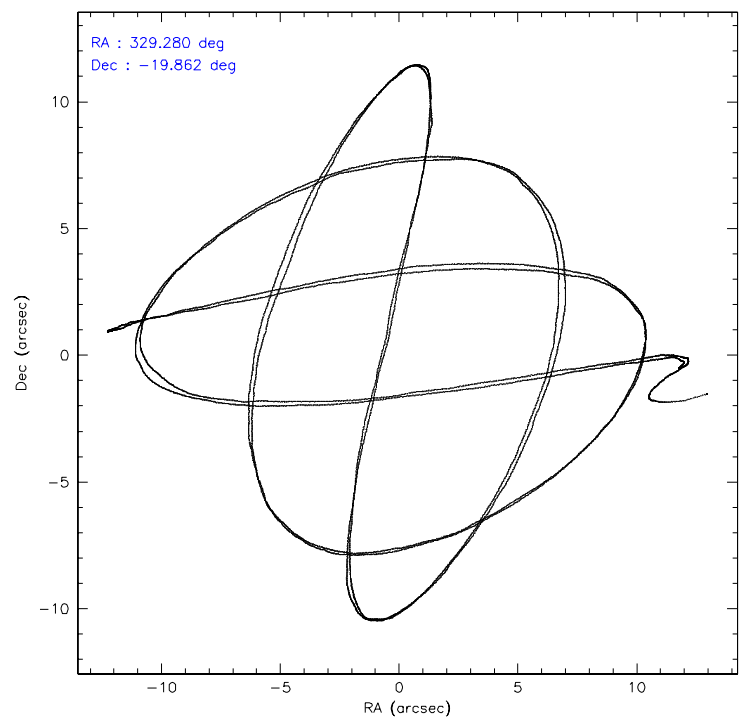
	ccd 2	ccd 3	ccd 5	ccd 6	ccd 7	ccd 8
level 1 events	31815	32733	49297	30754	43360	41068
rejected events	28324	29185	25239	26950	25527	33077
rejected %	89%	89%	51%	87%	58%	80%

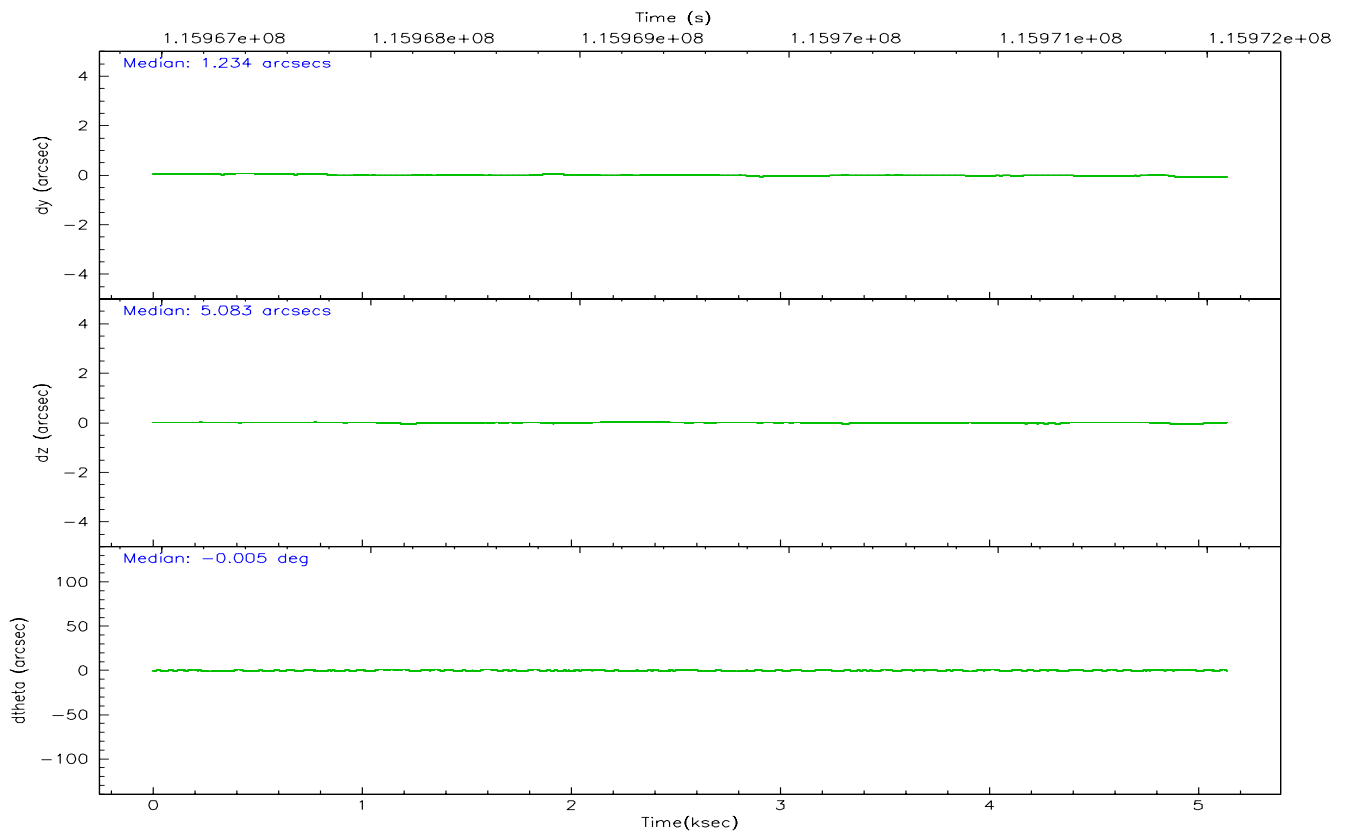
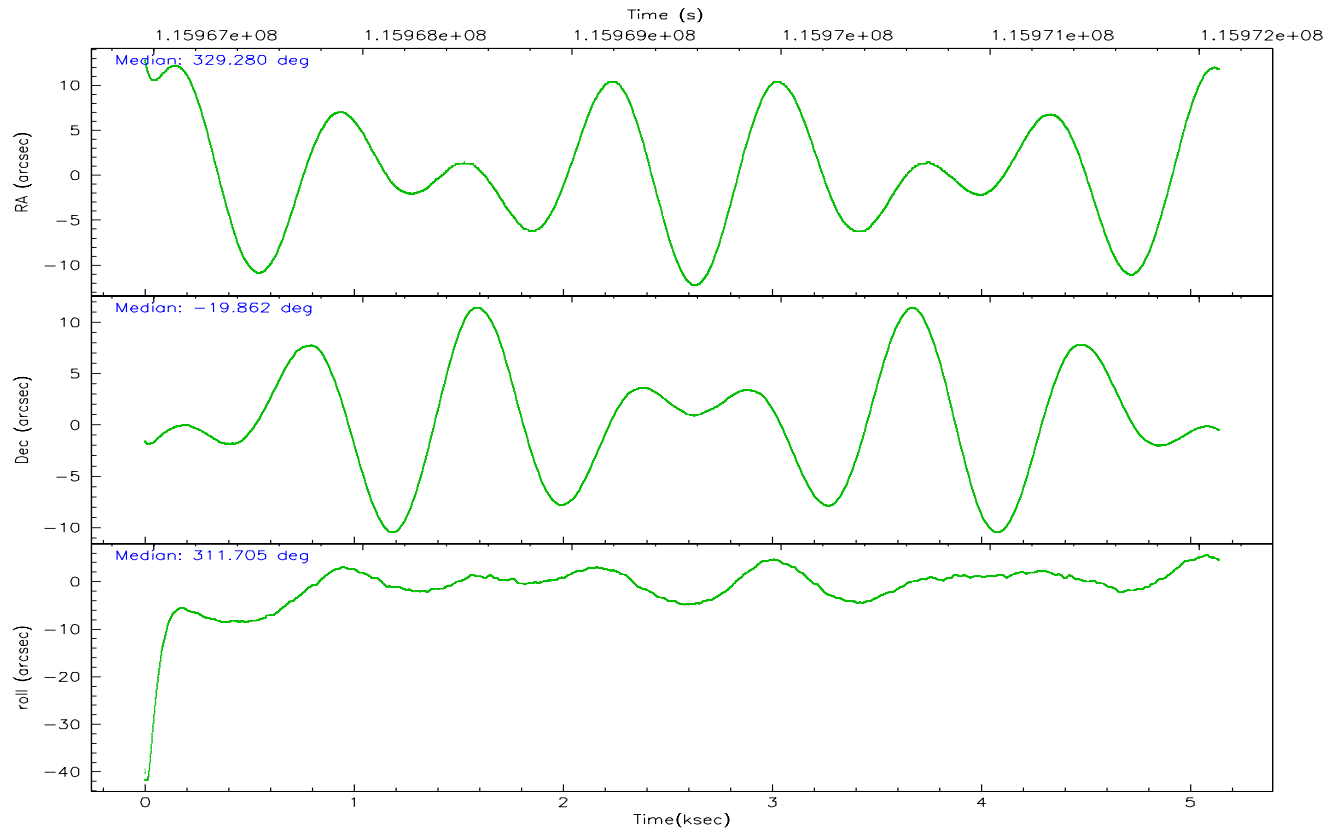
	ccd 2	ccd 3	ccd 5	ccd 6	ccd 7	ccd 8
grade 0 events	1396	1500	3737	1645	1286	2462
	4%	4%	7%	5%	2%	5%
grade 1 events	16	14	239	24	31	20
	0%	0%	0%	0%	0%	0%
grade 2 events	765	725	6964	743	4269	1829
	2%	2%	14%	2%	9%	4%
grade 3 events	342	338	625	344	984	800
	1%	1%	1%	1%	2%	1%
grade 4 events	347	332	660	354	951	731
	1%	1%	1%	1%	2%	1%
grade 5 events	1066	1248	2234	1350	2815	1691
	3%	3%	4%	4%	6%	4%
grade 6 events	643	655	12090	720	10348	2172
	2%	2%	24%	2%	23%	5%
grade 7 events	27240	27921	22748	25574	22676	31363
	85%	85%	46%	83%	52%	76%

2.2 Compared Parameters

Parameter	Planned	Actual	Parameter	Planned	Actual
Instrument	ACIS	ACIS	Obspar format version number	6	6
Detector	ACIS-235678	ACIS-235678	Obspar file type	PREDICTED	ACTUAL
Grating	NONE	NONE	Obspar update status	NONE	UPDATED
Data mode	FAINT	FAINT	Number of optional ACIS chips dropped	0	0
Observation mode	POINTING	POINTING	On-chip summing requested	N	N
Pointing RA	329.252357	329.2801116049349	Subarray requested	NONE	NONE
Pointing Dec	-19.853958	-19.86220685463698	Alternating exposures requested	N	N
Pointing Roll	311.549845	311.7158305584813	Primary exposure time	0.000000	3.2
SIM focus pos (mm)	-0.684267	-0.6828225247311905			
SIM defocus (mm)	0	0.001444936568705701			
SIM translation stage pos (mm)	-190.132523	-190.1400660498719			
SIM translation stage offset (mm)	0	0.00754346686406393			
Observation start time	115967098.184000	115966079.46558			
Observation start date	2001-09-04T05:03:54	2001-09-04T04:47:59			
Observation end time	115972098.184000	115972852.15334			
Observation end date	2001-09-04T06:27:14	2001-09-04T06:40:52			
Read mode	TIMED	TIMED			

2.3 Aspect



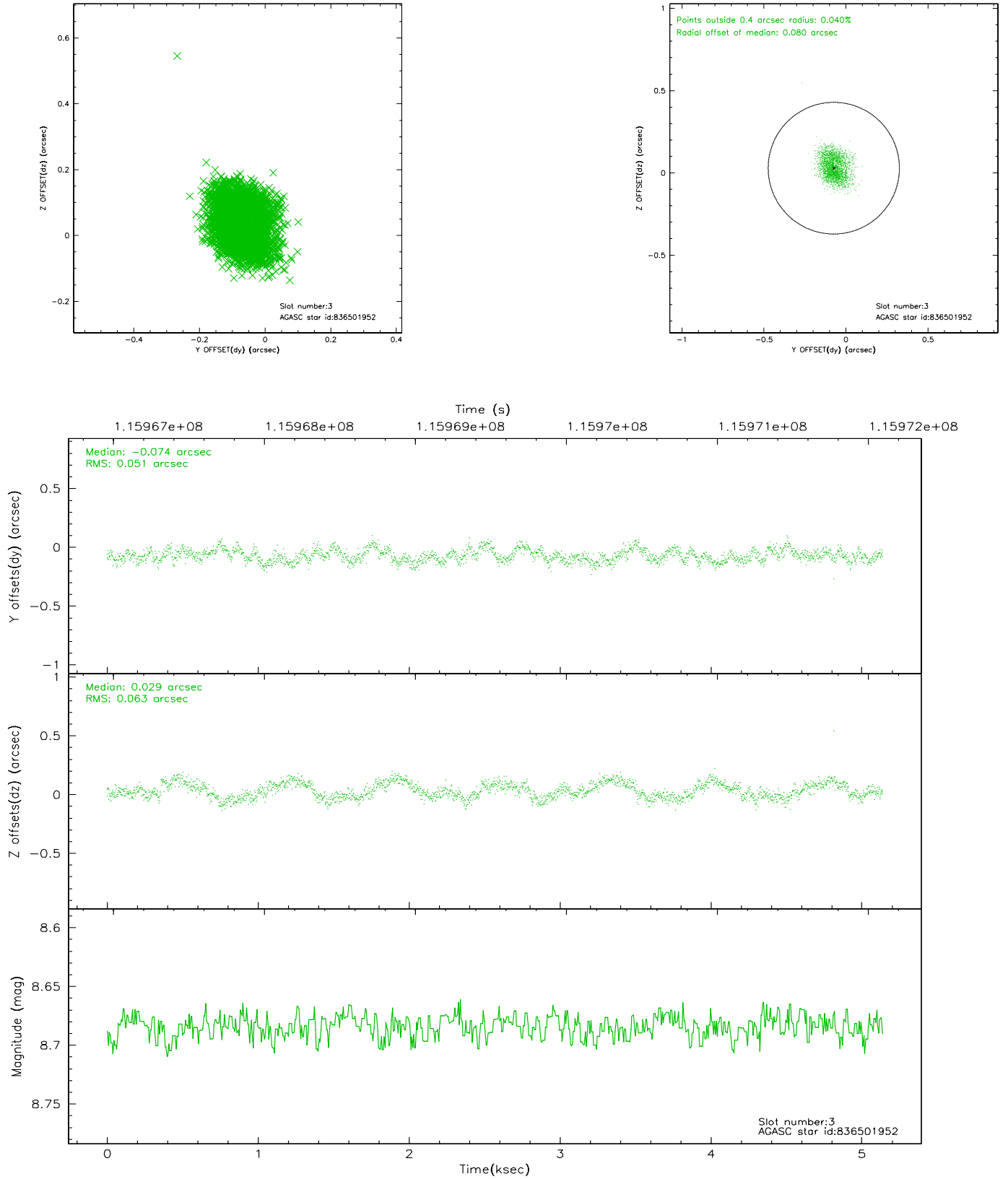


Slot Statistics

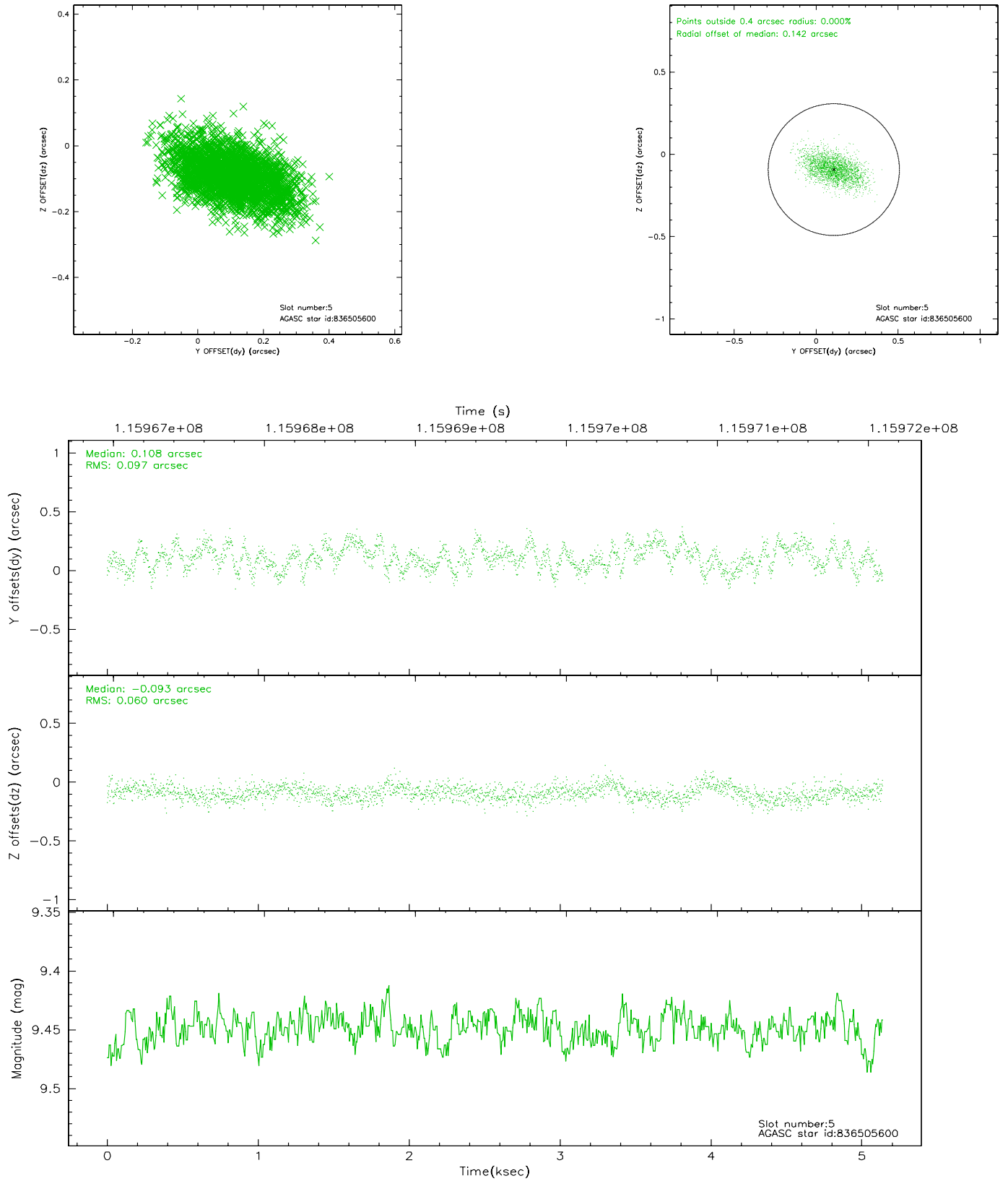
slot	status	id	mag	n_pts	med_dy	med_dz	dr1	dr2	ra	dec	mean_y	mean_z
0	FID	ACIS-S-2	7.12	1254	-0.041	0.008	0.006	0.010	0.000000	0.000000	-753.83	-1726.21
1	FID	ACIS-S-4	7.20	1254	-0.034	0.018	0.005	0.008	0.000000	0.000000	2158.88	181.14
2	FID	ACIS-S-5	7.24	1254	0.044	-0.017	0.006	0.010	0.000000	0.000000	-1805.11	176.02
3	GUIDE	836501952	8.68	2508	-0.074	0.029	0.087	0.134	329.135727	-20.027570	206.39	-710.13
4	OMITTED		0.00	0	0.000	0.000	0.000	0.000	0.000000	0.000000	0.00	0.00
5	GUIDE	836505600	9.45	2506	0.108	-0.093	0.123	0.200	329.144586	-20.765323	2215.73	-2448.10
6	GUIDE	836111928	9.45	2507	-0.021	0.021	0.126	0.205	329.185792	-19.087061	-2215.68	1660.06
7	GUIDE	836120360	9.37	2507	0.001	0.052	0.227	0.336	329.603756	-19.385137	-471.80	2011.84

2.4 Star Slots

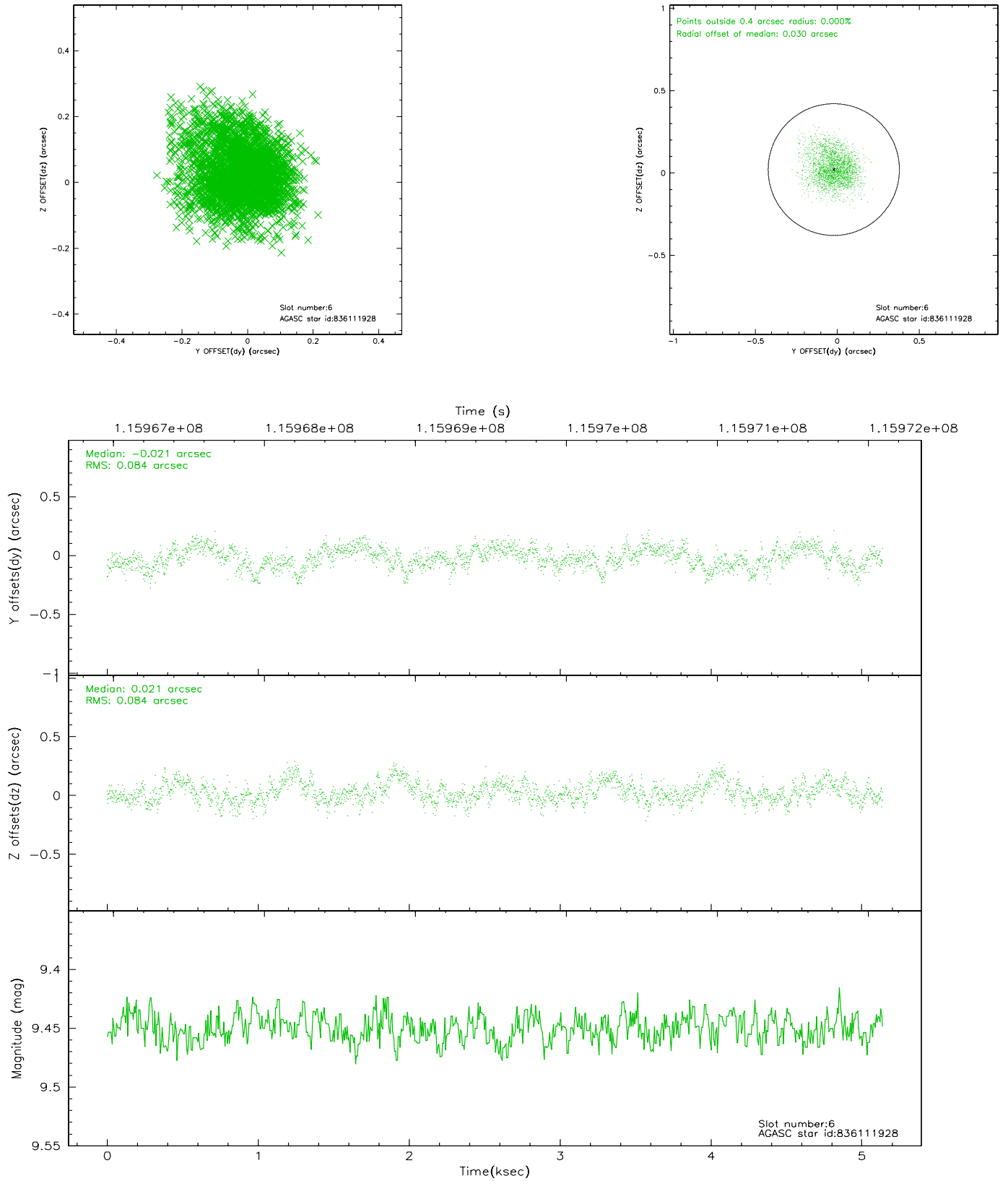
2.4.1 Slot 3



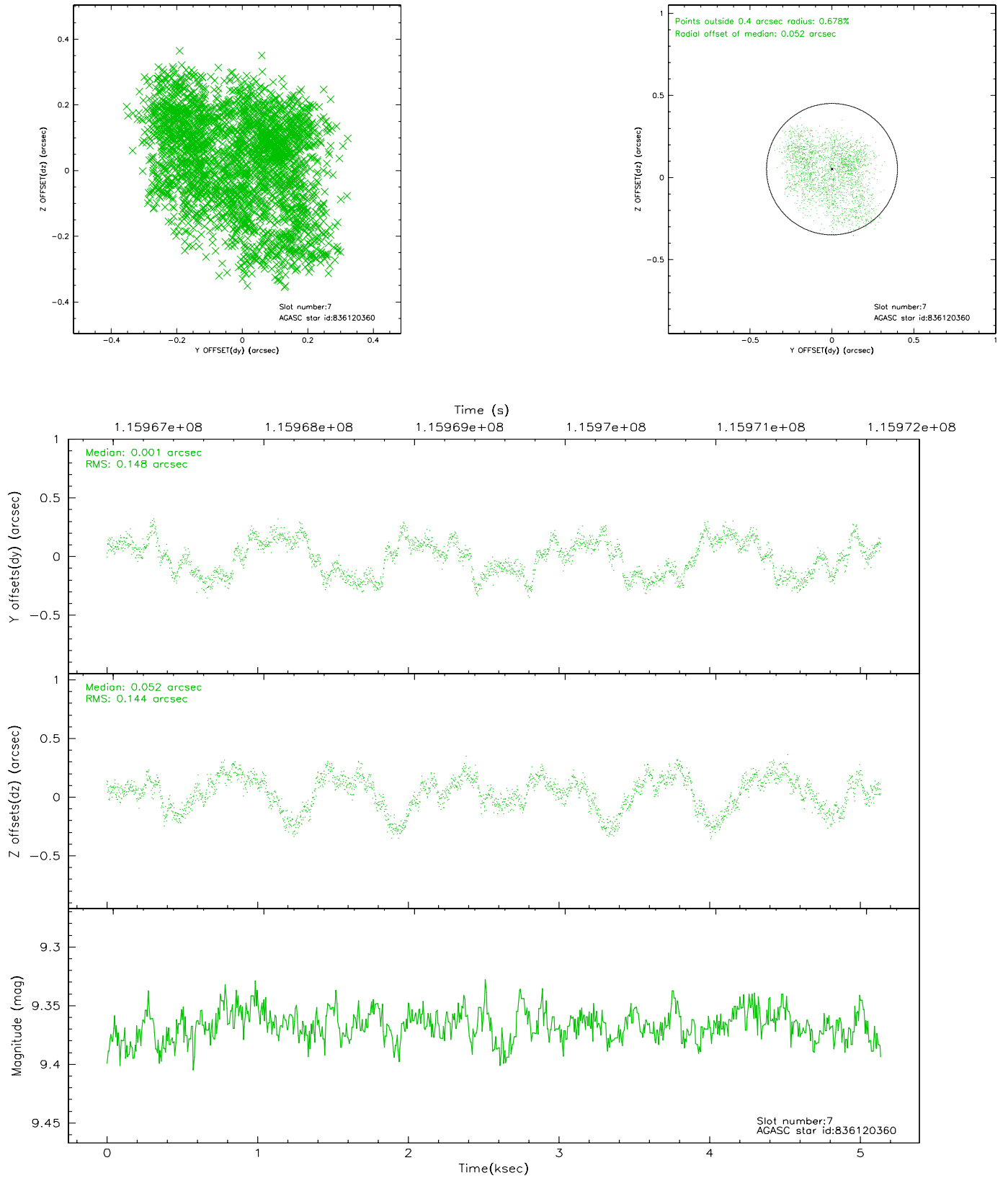
2.4.2 Slot 5



2.4.3 Slot 6

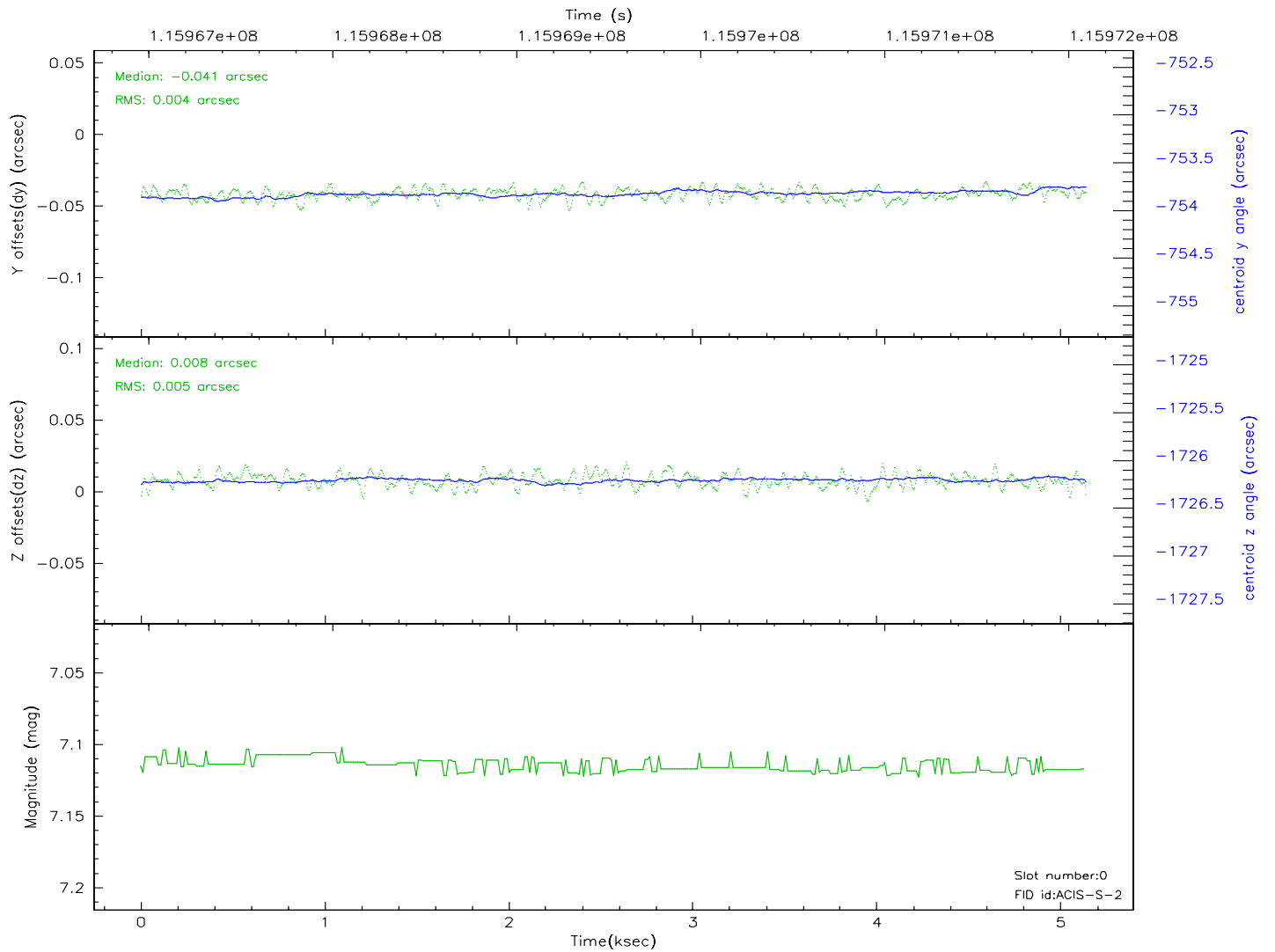
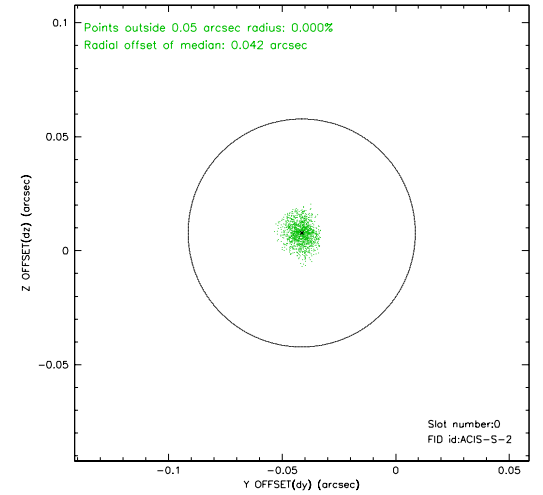
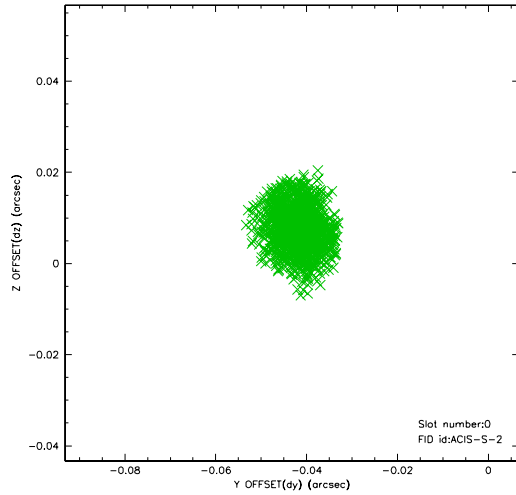


2.4.4 Slot 7

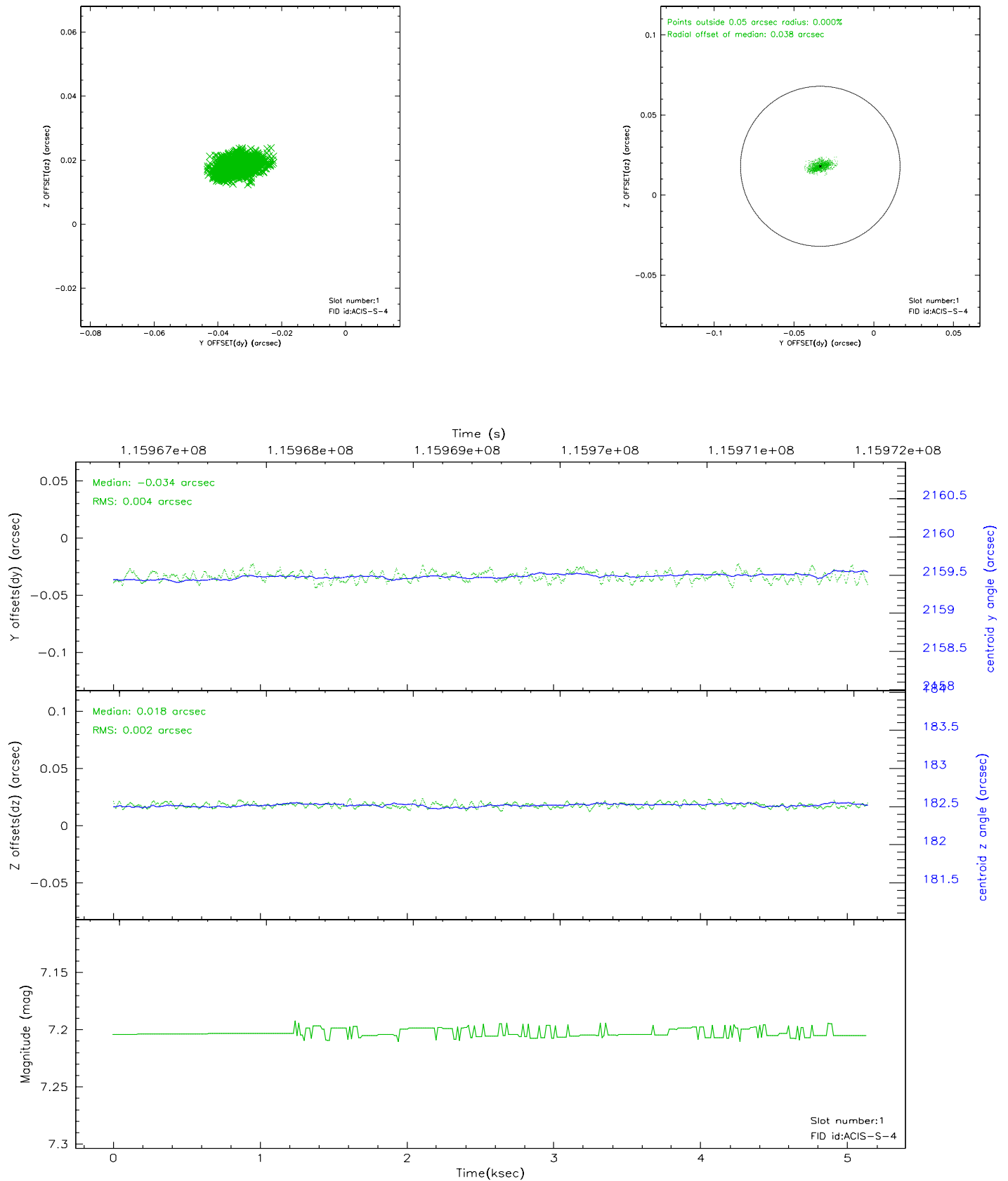


2.5 FID Slots

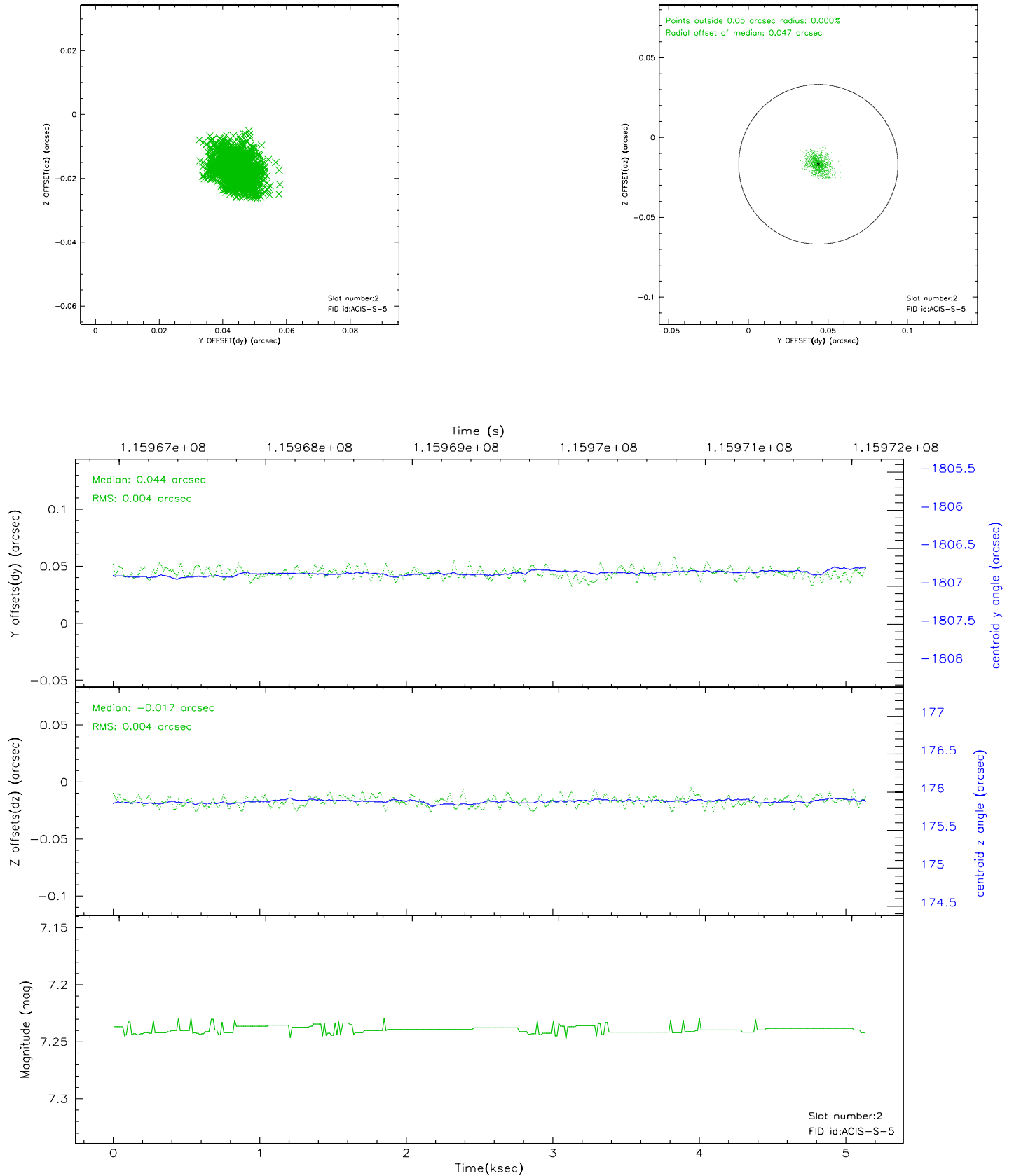
2.5.1 Slot 0



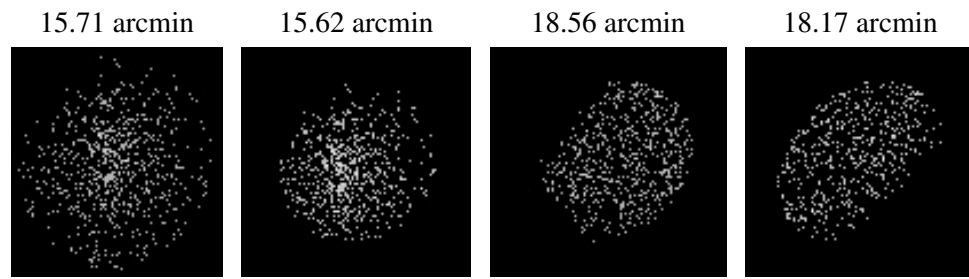
2.5.2 Slot 1



2.5.3 Slot 2



3 Point Sources



A Summary

A.1 Status

V&V Scientist	Jen Lauer
V&V Date (YYYY-MM-DD)	2010.10.01
V&V Edition	2
V&V Disposition and Status	OK
V&V Charge Time	5.066

A.2 Comments

The guide star in slot 4 was manually excluded from the processing due to poor data quality.