

V&V Reference Report

L2 ASCDS Version : 7.6.9

Observation 2106 - L2 Version 001
Chandra X-Ray Center

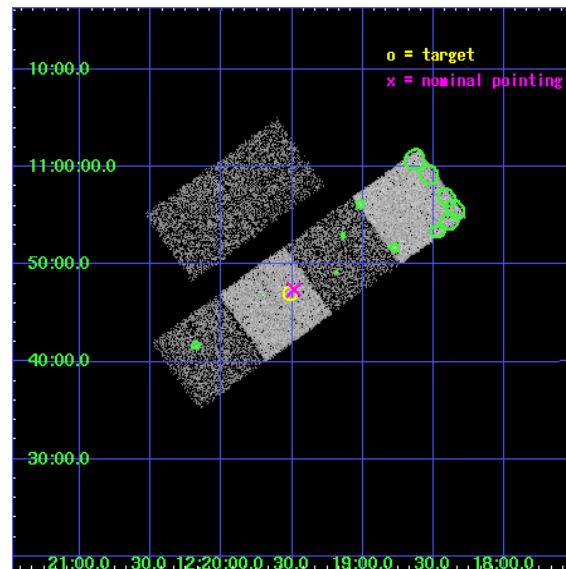
L2 Processing Date : Nov 15 2006

Contents

1	Front	2
2	OBI	3
2.1	OBI	3
2.1.1	Images	3
2.1.2	Bias	3
2.1.3	Parameters	4
2.1.4	Events	4
2.2	Compared Parameters	5
2.3	Aspect	6
2.4	Star Slots	9
2.4.1	Slot 3	9
2.4.2	Slot 4	10
2.4.3	Slot 5	11
2.4.4	Slot 6	12
2.4.5	Slot 7	13
2.5	FID Slots	14
2.5.1	Slot 0	14
2.5.2	Slot 1	15
2.5.3	Slot 2	16
3	Point Sources	17
A	Summary	18
A.1	Status	18
A.2	Comments	18

1 Front

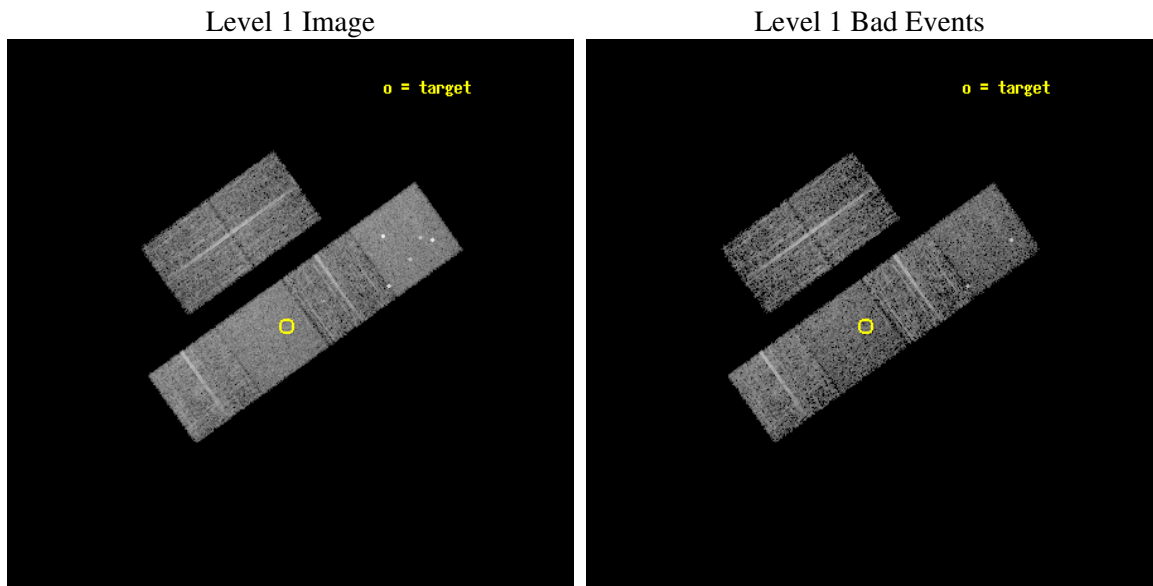
seq_num	700296
obs_id	2106
title	PUBLIC OBSERVATIONS OF A WELL-DEFINED SAMPLE OF BAL QSOS FROM THE LARGE BRIGHT QUASAR SURVEY: REMOVING THE BARRIERS
observer	Prof. William Brandt
object	LBQS 1216+1103
dtcycle	0
cycle	P
ra_targ	184.87875
dec_targ	10.783528
ra_nom	184.87186244228
dec_nom	10.790504766124
roll_nom	144.4054461492
revision	2
ontime	4694.400004372
livetime	4634.9566848883
ontime2	4694.400004372
ontime3	4694.400004372
ontime5	4694.400004372
ontime6	4694.400004372
ontime7	4694.400004372
ontime8	4691.1591537297
l2events	45773



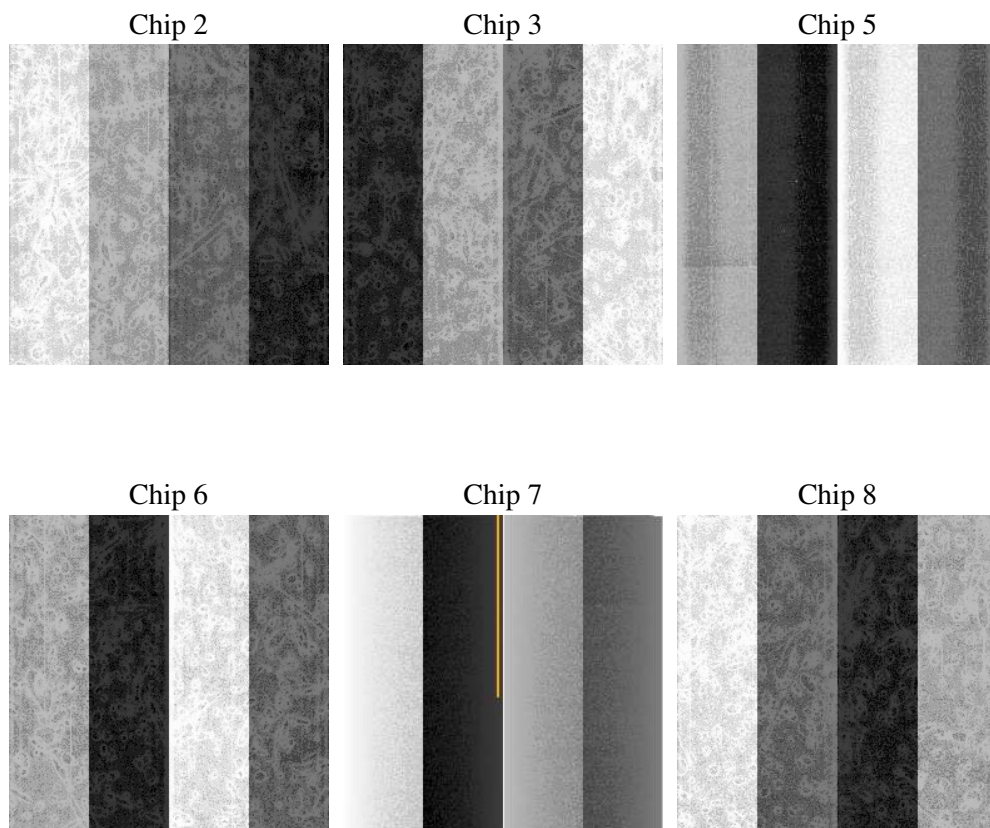
2 OBI

2.1 OBI

2.1.1 Images



2.1.2 Bias



2.1.3 Parameters

obi_num	0
ascdsver	7.6.9
caldsver	3.2.4
date	2006-11-15T17:12:46
revision	2

sched_exp_time	4995.000000
ontime	4699.453531608
ontime2	4699.453531608
ontime3	4699.453531608
ontime5	4699.453531608
ontime6	4699.453531608
ontime7	4699.453531608
ontime8	4696.2125912756
l1events	222567

2.1.4 Events

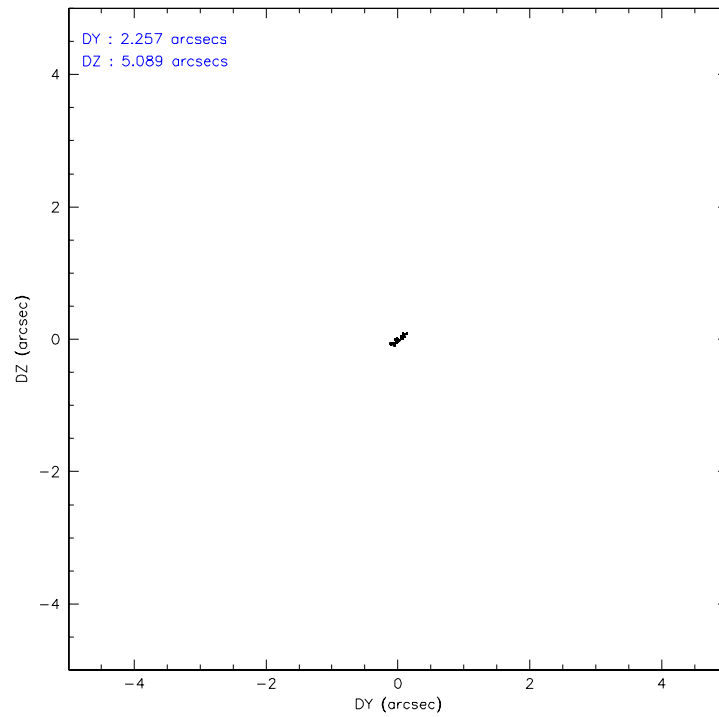
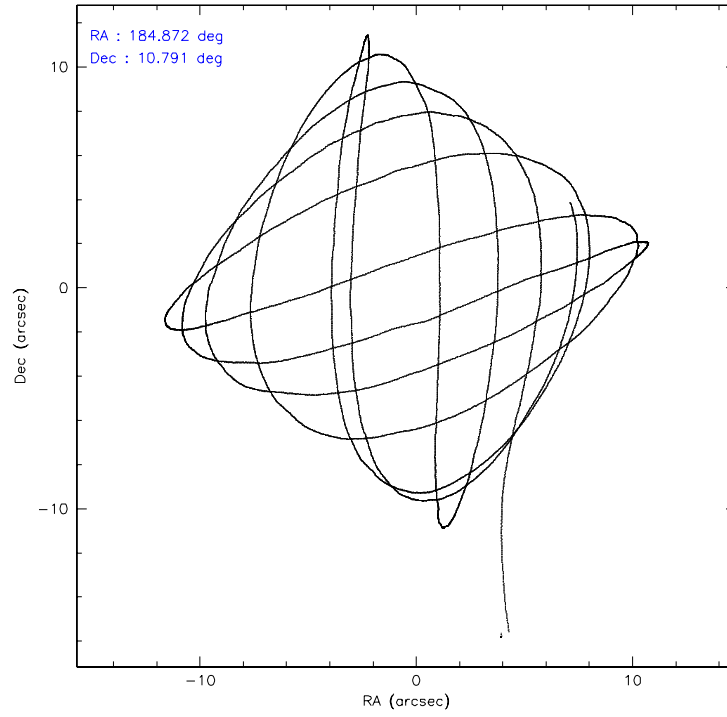
	ccd 2	ccd 3	ccd 5	ccd 6	ccd 7	ccd 8
level 1 events	30582	30847	46131	33258	40051	41698
rejected events	27154	27269	24818	29287	24668	33761
rejected %	88%	88%	53%	88%	61%	80%

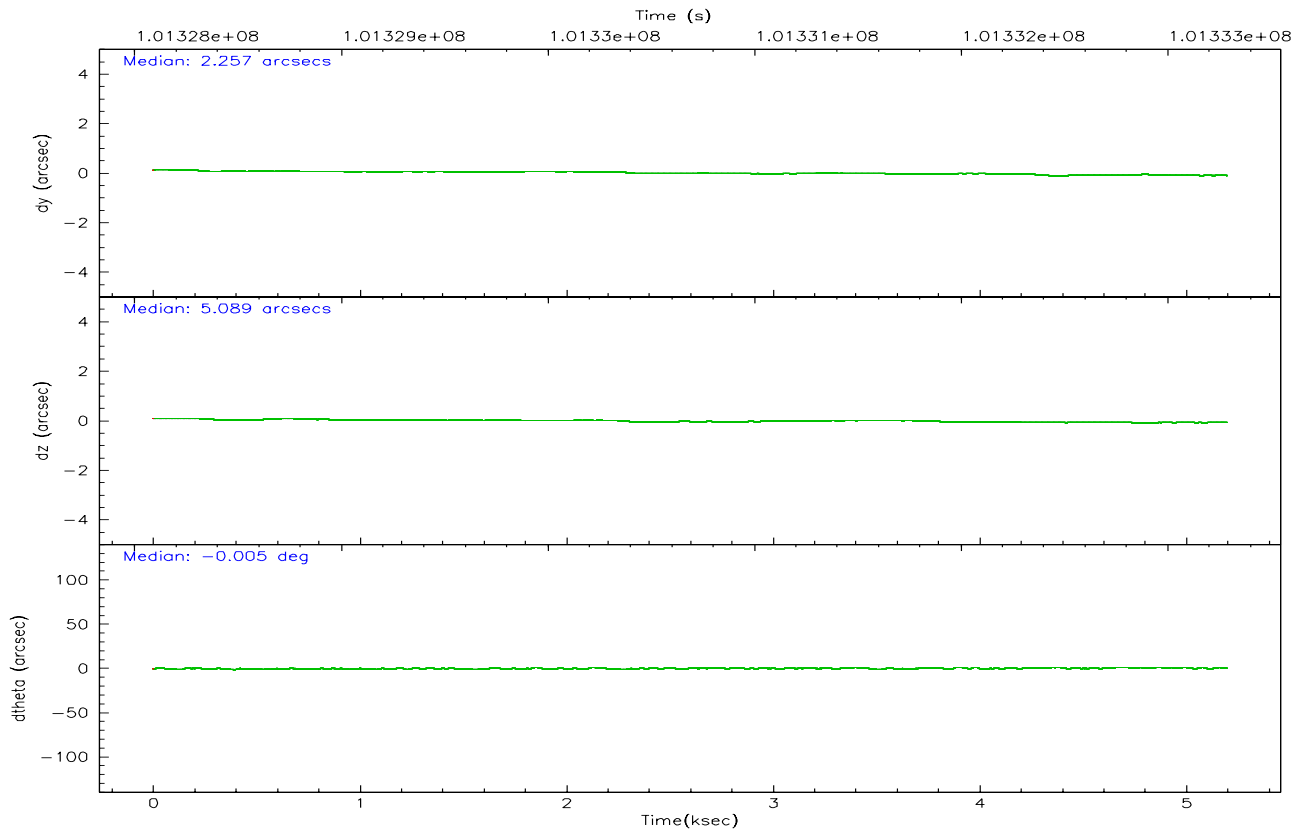
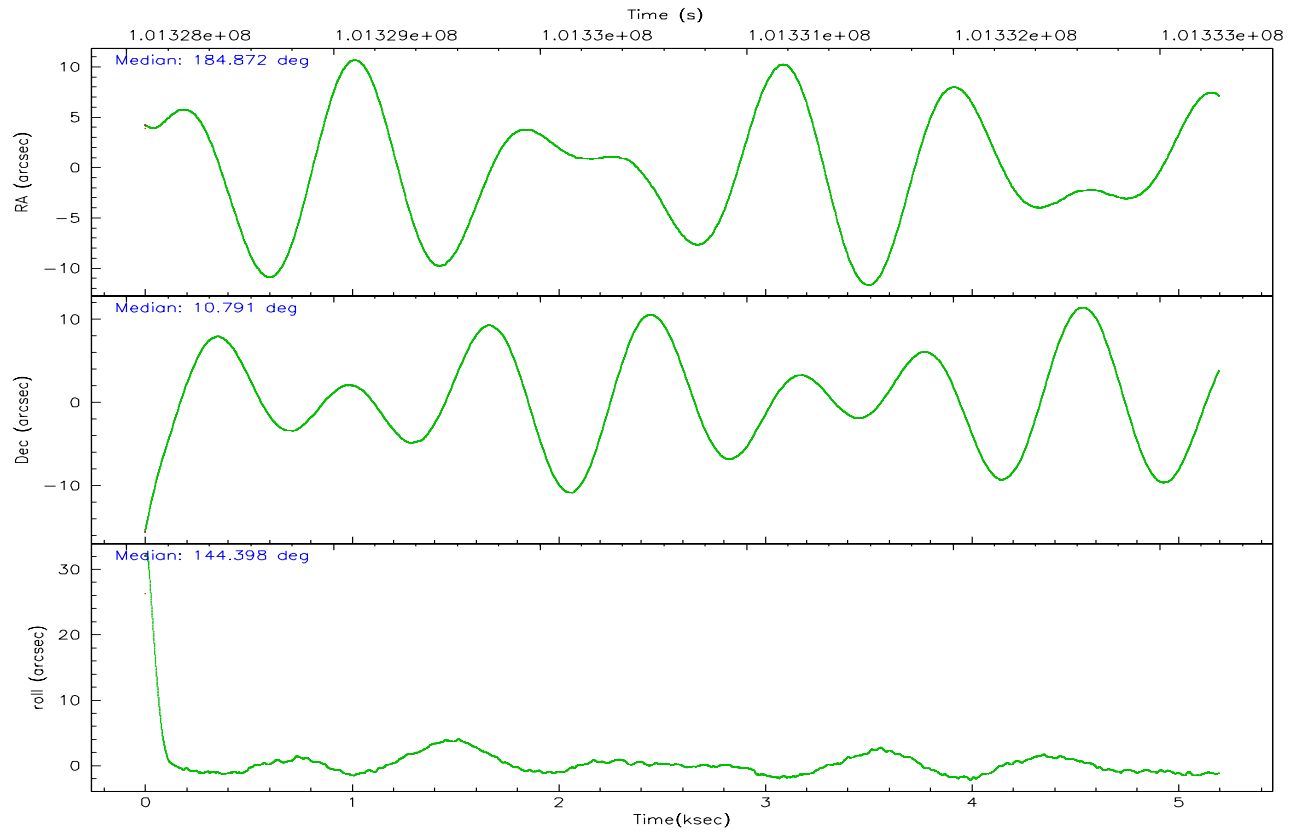
	ccd 2	ccd 3	ccd 5	ccd 6	ccd 7	ccd 8
grade 0 events	1405	1534	3066	1708	974	2647
	4%	4%	6%	5%	2%	6%
grade 1 events	10	14	172	18	26	23
	0%	0%	0%	0%	0%	0%
grade 2 events	720	689	6313	776	3752	1673
	2%	2%	13%	2%	9%	4%
grade 3 events	327	359	457	386	814	838
	1%	1%	0%	1%	2%	2%
grade 4 events	324	347	415	369	806	819
	1%	1%	0%	1%	2%	1%
grade 5 events	1067	1129	2228	1194	2699	1574
	3%	3%	4%	3%	6%	3%
grade 6 events	656	652	11082	739	9062	1962
	2%	2%	24%	2%	22%	4%
grade 7 events	26073	26123	22398	28068	21918	32162
	85%	84%	48%	84%	54%	77%

2.2 Compared Parameters

Parameter	Planned	Actual	Parameter	Planned	Actual
Instrument	ACIS	ACIS	Obspar format version number	6	6
Detector	ACIS-235678	ACIS-235678	Obspar file type	PREDICTED	ACTUAL
Grating	NONE	NONE	Obspar update status	NONE	UPDATED
Data mode	FAINT	FAINT	Number of optional ACIS chips dropped	0	0
Observation mode	POINTING	POINTING	On-chip summing requested	N	N
Pointing RA	184.899500	184.8718624422776	Subarray requested	NONE	NONE
Pointing Dec	10.788160	10.79050476612354	Alternating exposures requested	N	N
Pointing Roll	144.243561	144.4054461492026	Primary exposure time	0.000000	3.2
SIM focus pos (mm)	-0.684267	-0.6828225247311905			
SIM defocus (mm)	0	0.001444936568705701			
SIM translation stage pos (mm)	-190.132523	-190.1425803651734			
SIM translation stage offset (mm)	0	0.01005778216563158			
Observation start time	101328287.184000	101327606.48175			
Observation start date	2001-03-18T18:43:43	2001-03-18T18:33:26			
Observation end time	101333282.184000	101333754.43199			
Observation end date	2001-03-18T20:06:58	2001-03-18T20:15:54			
Read mode	TIMED	TIMED			

2.3 Aspect



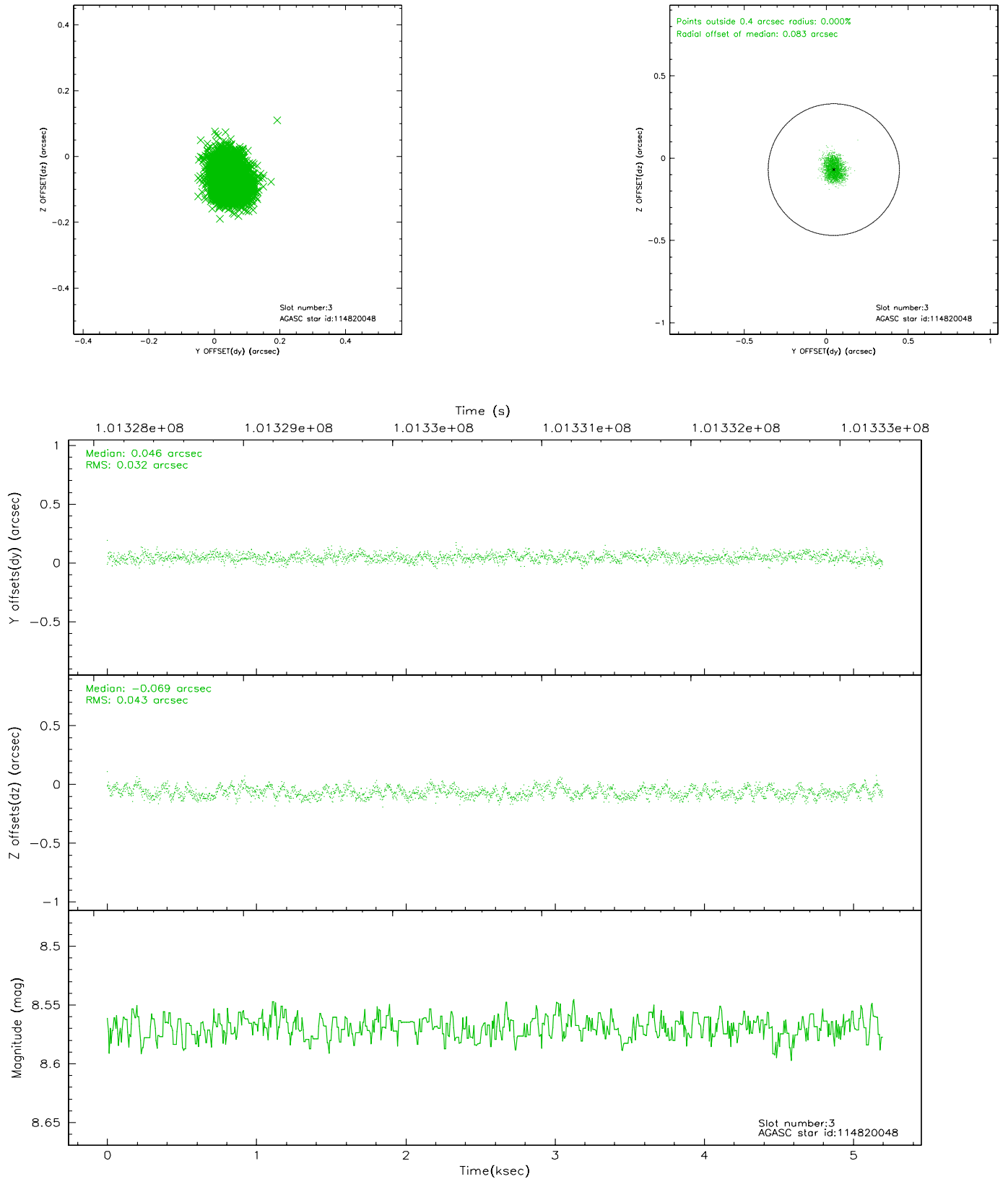


Slot Statistics

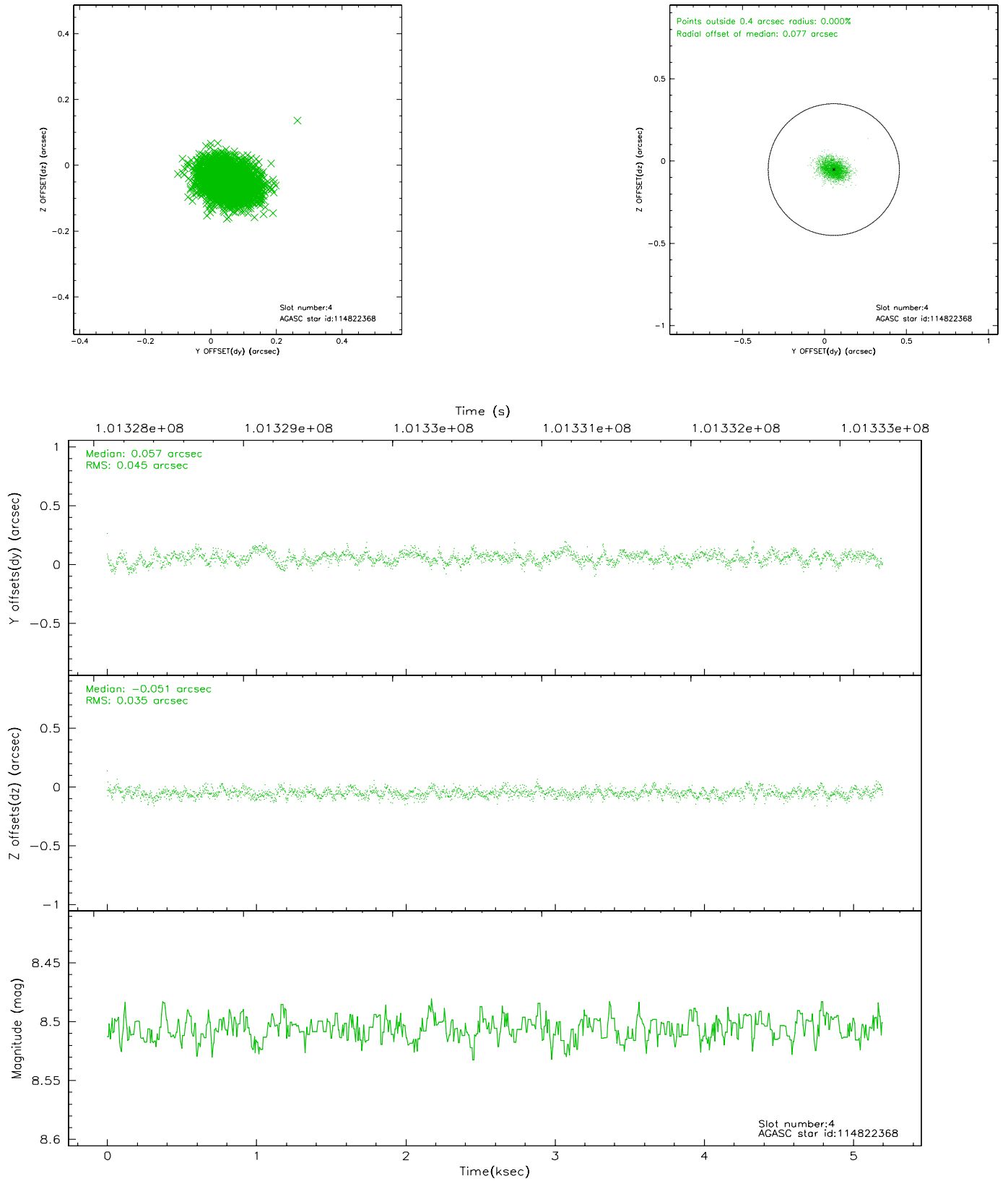
slot	status	id	mag	n_pts	med_dy	med_dz	dr1	dr2	ra	dec	mean_y	mean_z
0	FID	ACIS-S-2	7.11	1269	-0.021	0.018	0.006	0.010	0.000000	0.000000	-754.87	-1726.15
1	FID	ACIS-S-4	7.20	1269	-0.071	0.005	0.005	0.009	0.000000	0.000000	2157.79	181.19
2	FID	ACIS-S-5	7.24	1269	0.061	-0.015	0.006	0.010	0.000000	0.000000	-1806.17	176.07
3	GUIDE	114820048	8.57	2536	0.046	-0.069	0.059	0.090	184.777986	10.593434	-60.41	819.95
4	GUIDE	114822368	8.51	2536	0.057	-0.051	0.060	0.100	184.977820	10.484355	-863.91	725.67
5	GUIDE	114819552	8.95	2536	-0.157	0.084	0.082	0.133	185.130690	11.375327	573.27	-2192.00
6	GUIDE	114824808	8.96	2534	0.015	0.114	0.073	0.120	184.408420	11.215424	2307.42	-236.52
7	GUIDE	114823888	8.88	2534	0.032	-0.078	0.096	0.140	184.917671	10.024564	-1657.73	2192.85

2.4 Star Slots

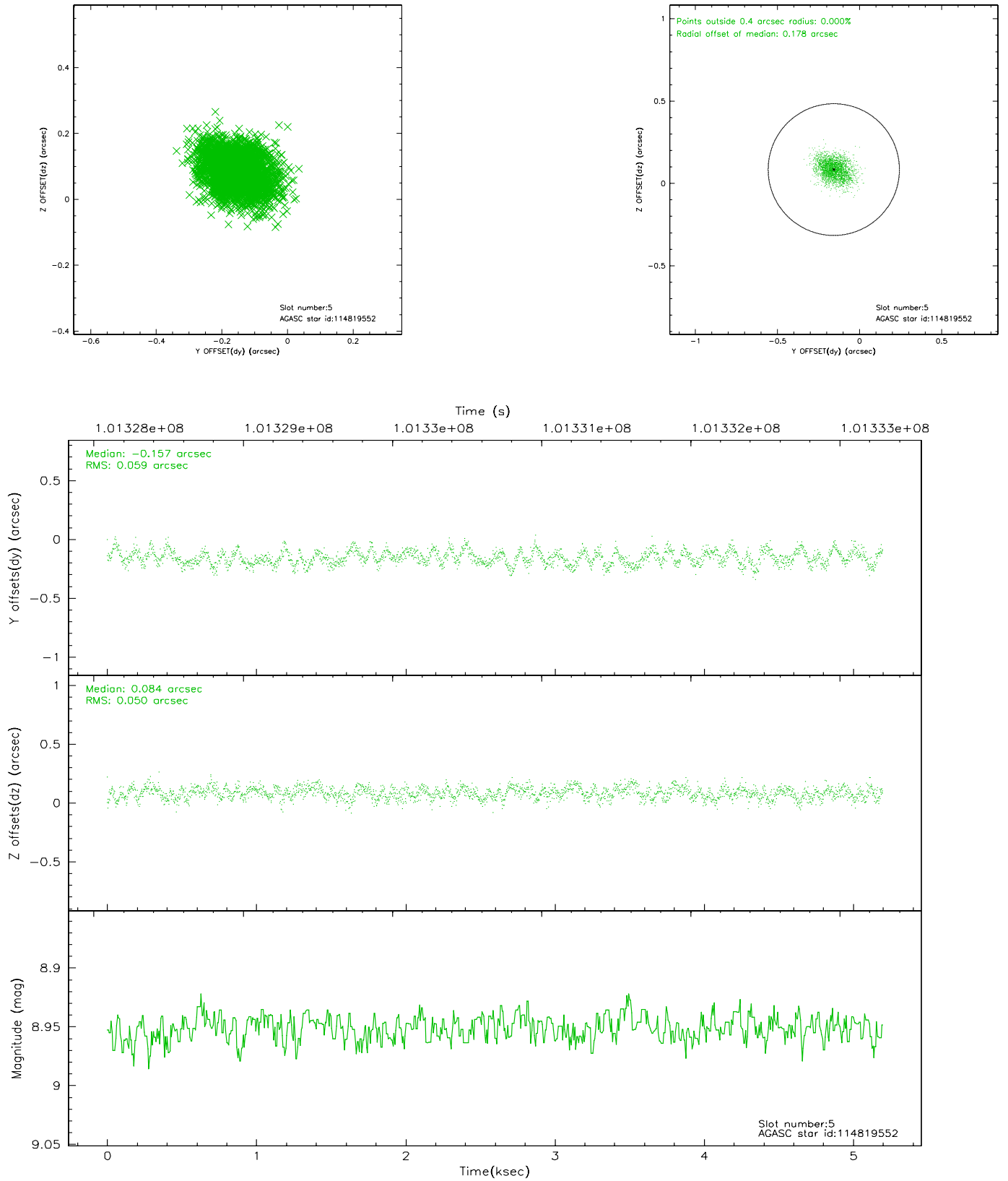
2.4.1 Slot 3



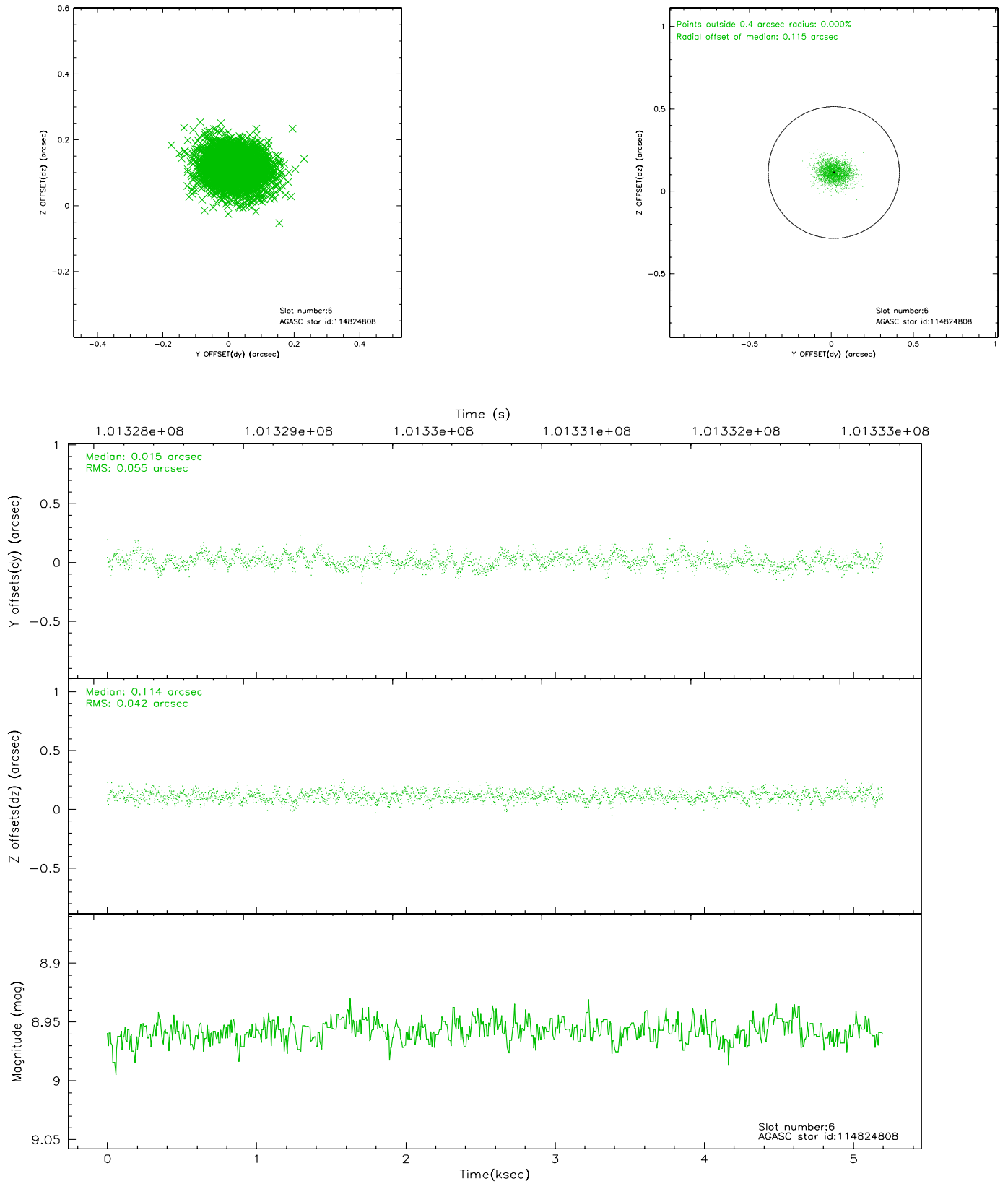
2.4.2 Slot 4



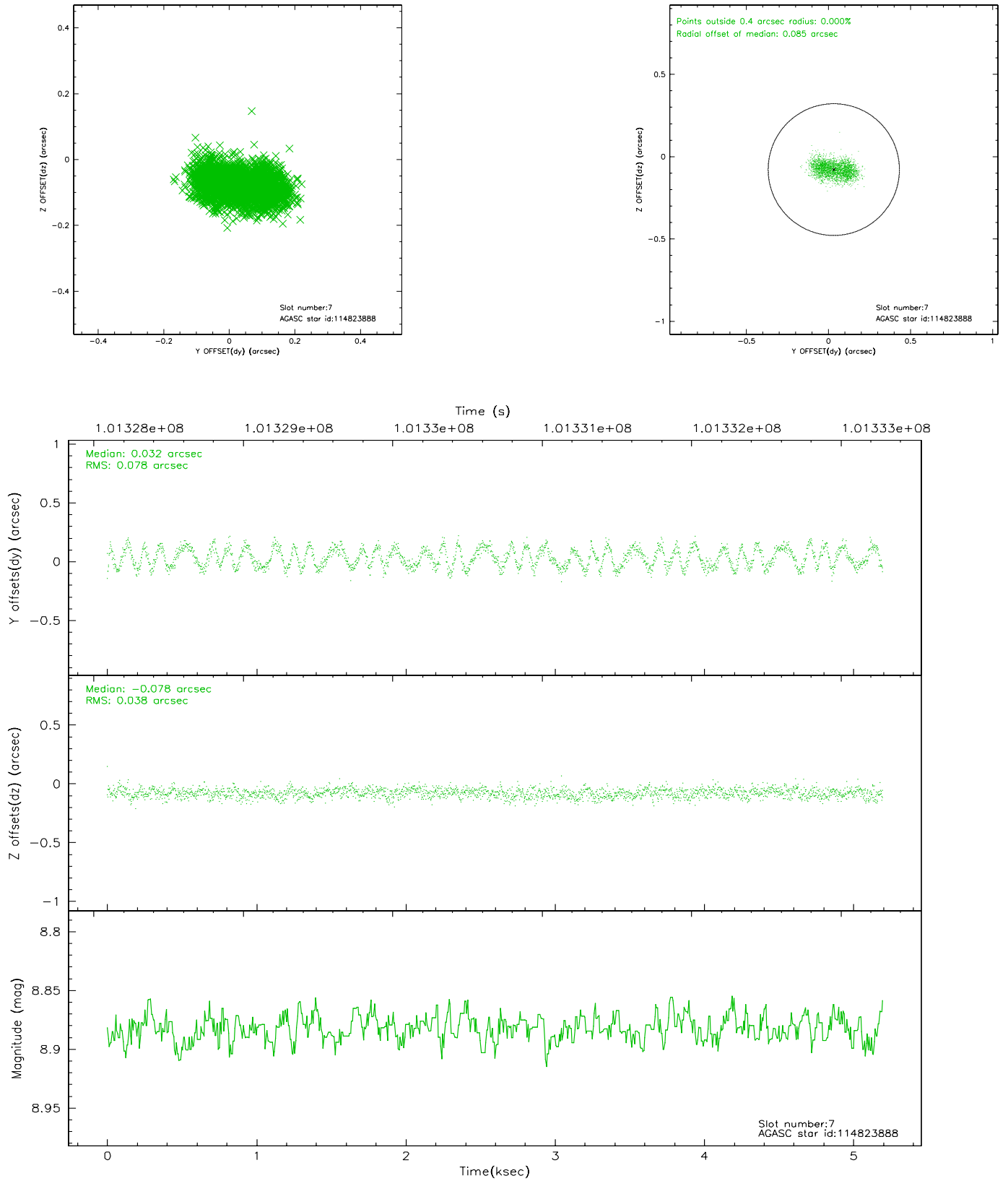
2.4.3 Slot 5



2.4.4 Slot 6

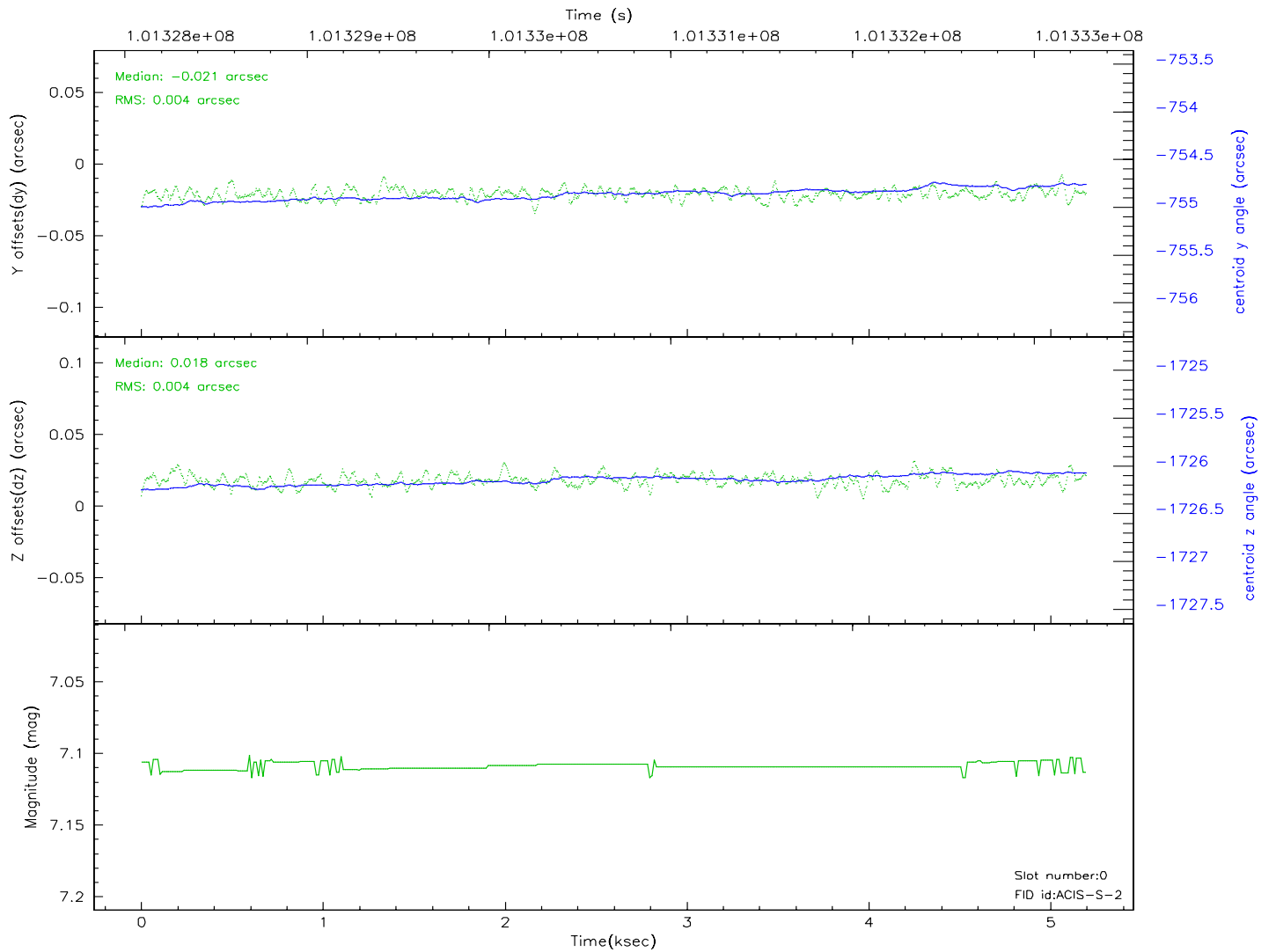
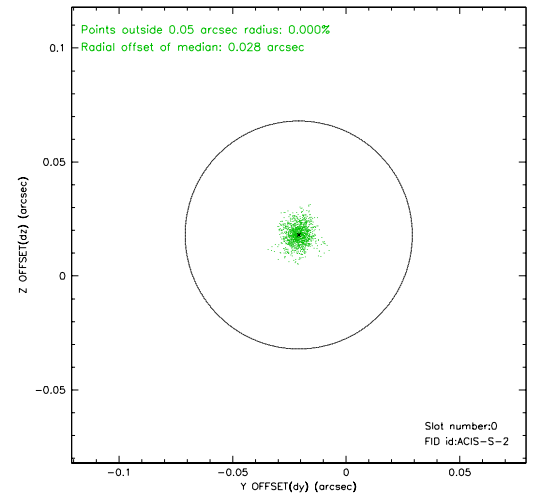
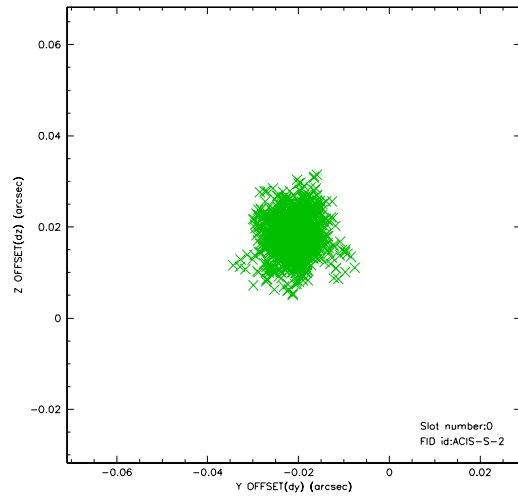


2.4.5 Slot 7

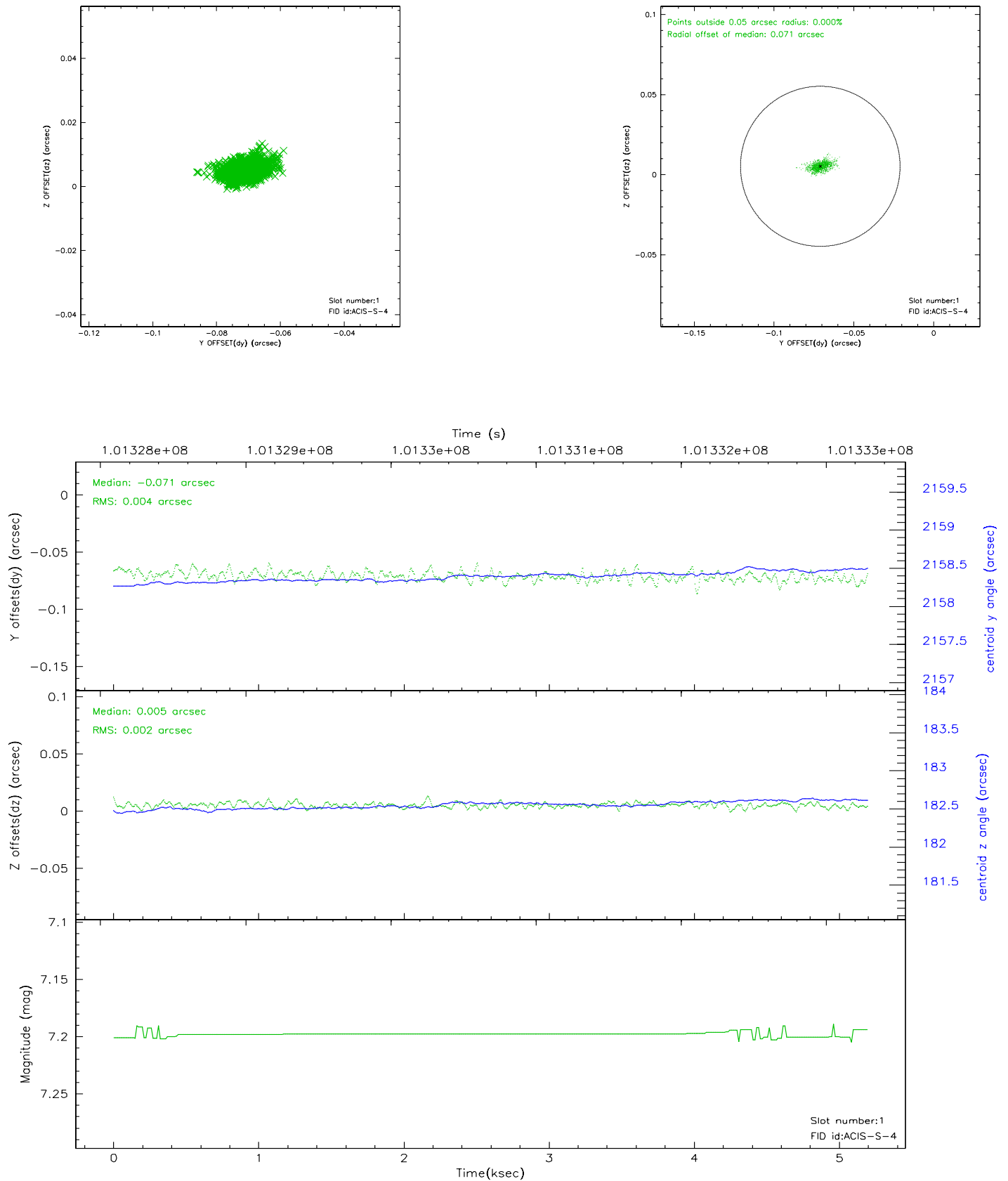


2.5 FID Slots

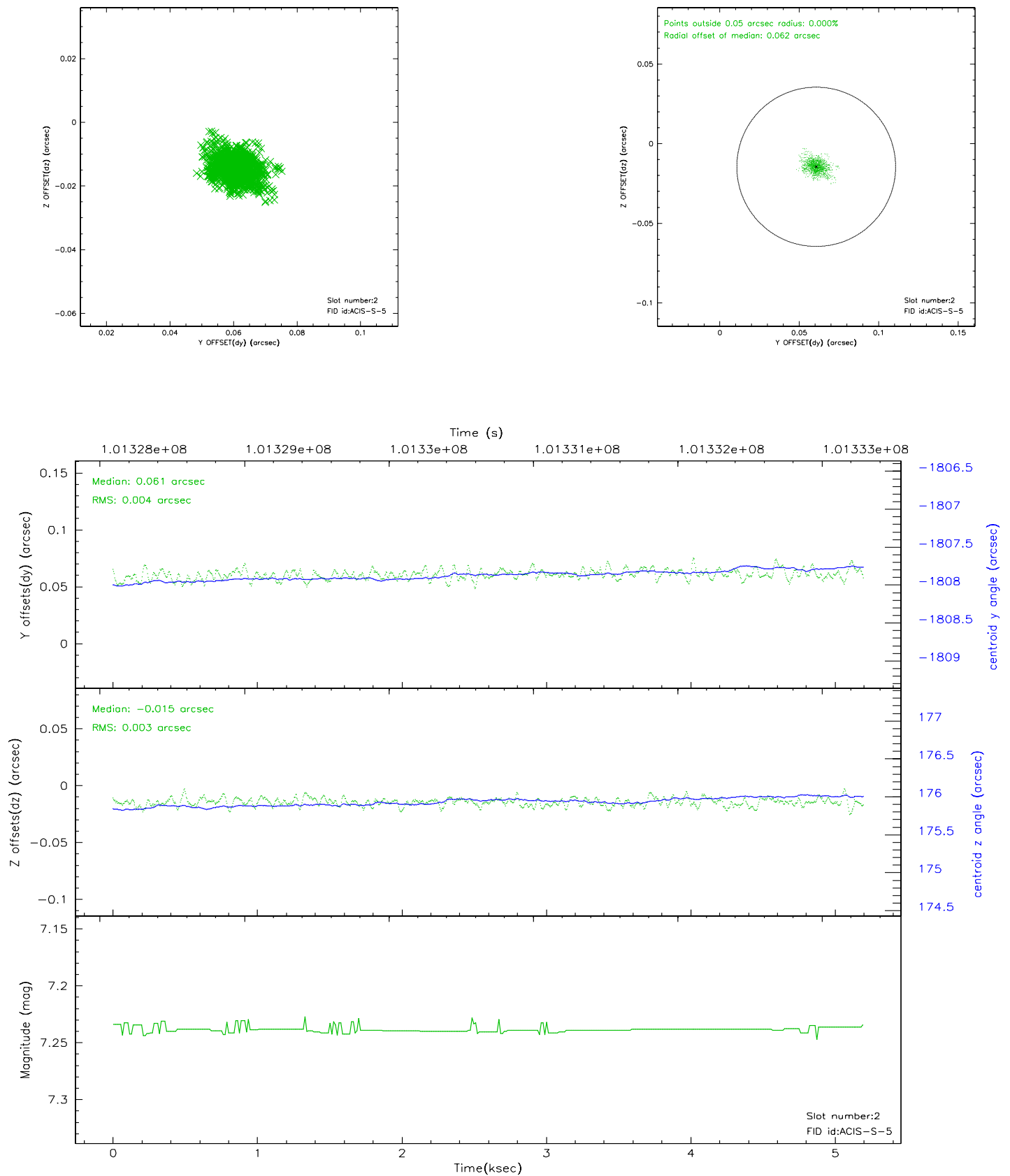
2.5.1 Slot 0



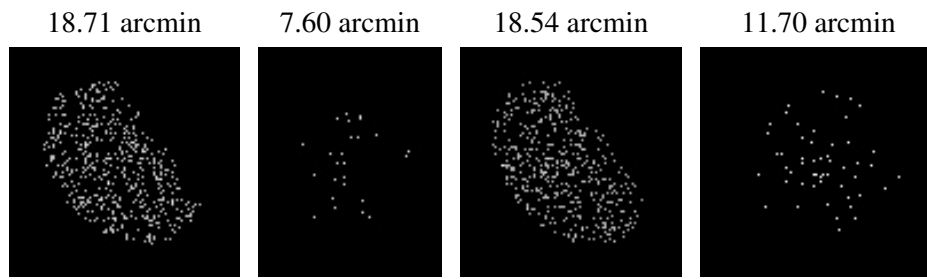
2.5.2 Slot 1



2.5.3 Slot 2



3 Point Sources



A Summary

A.1 Status

V&V Scientist	Jen Lauer
V&V Date (YYYY-MM-DD)	2006.11.15
V&V Edition	1
V&V Disposition and Status	OK
V&V Charge Time	4.7

A.2 Comments