

# V&V Reference Report

## L2 ASCDS Version : 7.6.9

Observation 2083 - L2 Version 001  
Chandra X-Ray Center

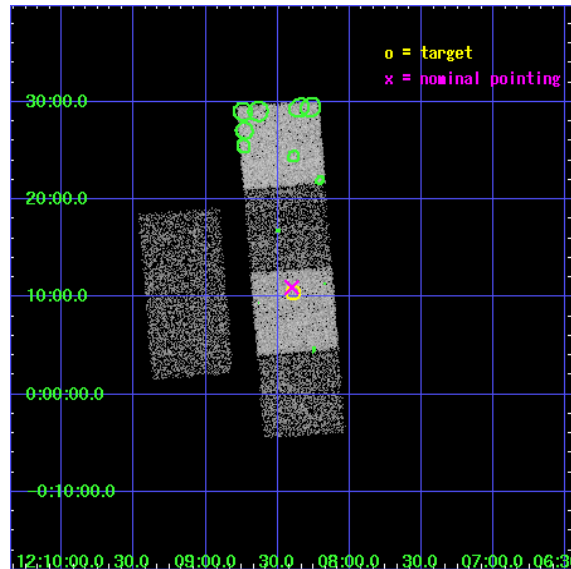
L2 Processing Date : Nov 15 2006

## Contents

<b>1</b>	<b>Front</b>	<b>2</b>
<b>2</b>	<b>OBI</b>	<b>3</b>
2.1	OBI . . . . .	3
2.1.1	Images . . . . .	3
2.1.2	Bias . . . . .	3
2.1.3	Parameters . . . . .	4
2.1.4	Events . . . . .	4
2.2	Compared Parameters . . . . .	5
2.3	Aspect . . . . .	6
2.4	Star Slots . . . . .	9
2.4.1	Slot 3 . . . . .	9
2.4.2	Slot 4 . . . . .	10
2.4.3	Slot 5 . . . . .	11
2.4.4	Slot 6 . . . . .	12
2.4.5	Slot 7 . . . . .	13
2.5	FID Slots . . . . .	14
2.5.1	Slot 0 . . . . .	14
2.5.2	Slot 1 . . . . .	15
2.5.3	Slot 2 . . . . .	16
<b>3</b>	<b>Point Sources</b>	<b>17</b>
<b>A</b>	<b>Summary</b>	<b>18</b>
A.1	Status . . . . .	18
A.2	Comments . . . . .	18

# 1 Front

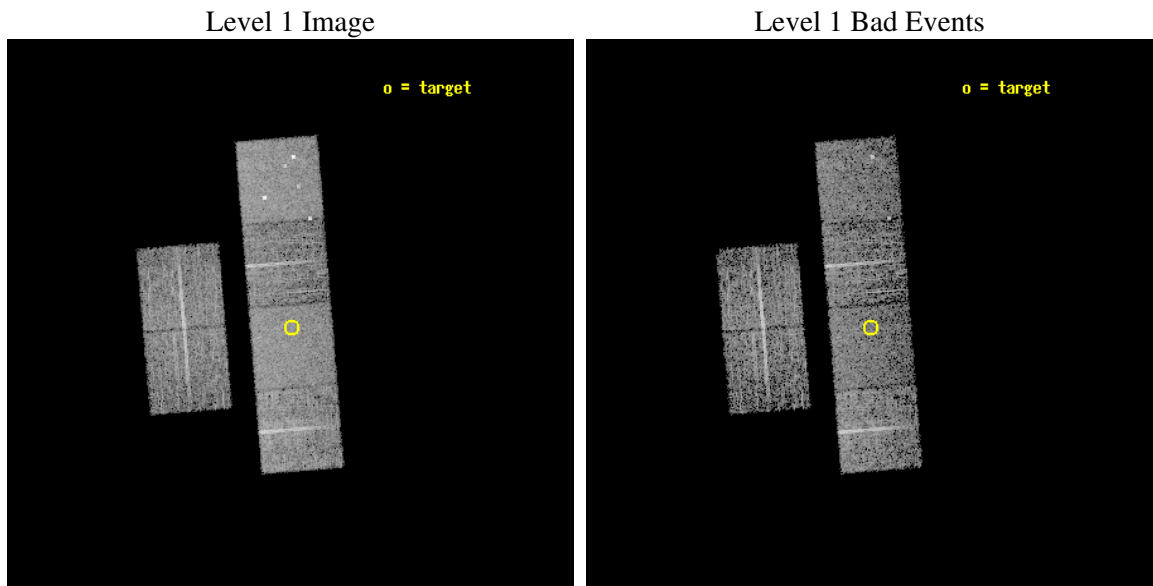
seq_num	700273
obs_id	2083
title	AN X-RAY STUDY OF THE MOST DISTANT QUASARS FROM THE SLOAN DIGITAL SKY SURVEY
observer	Prof. William Brandt
object	SDSS120823+001027
dtcycle	0
cycle	P
ra_targ	182.099167
dec_targ	0.174361
ra_nom	182.10034659158
dec_nom	0.18278949918517
roll_nom	85.260946087275
revision	2
ontime	4678.4000043571
livetime	4619.1592865076
ontime2	4678.4000043571
ontime3	4678.4000043571
ontime5	4678.4000043571
ontime6	4678.4000043571
ontime7	4678.4000043571
ontime8	4675.1590341032
l2events	44622



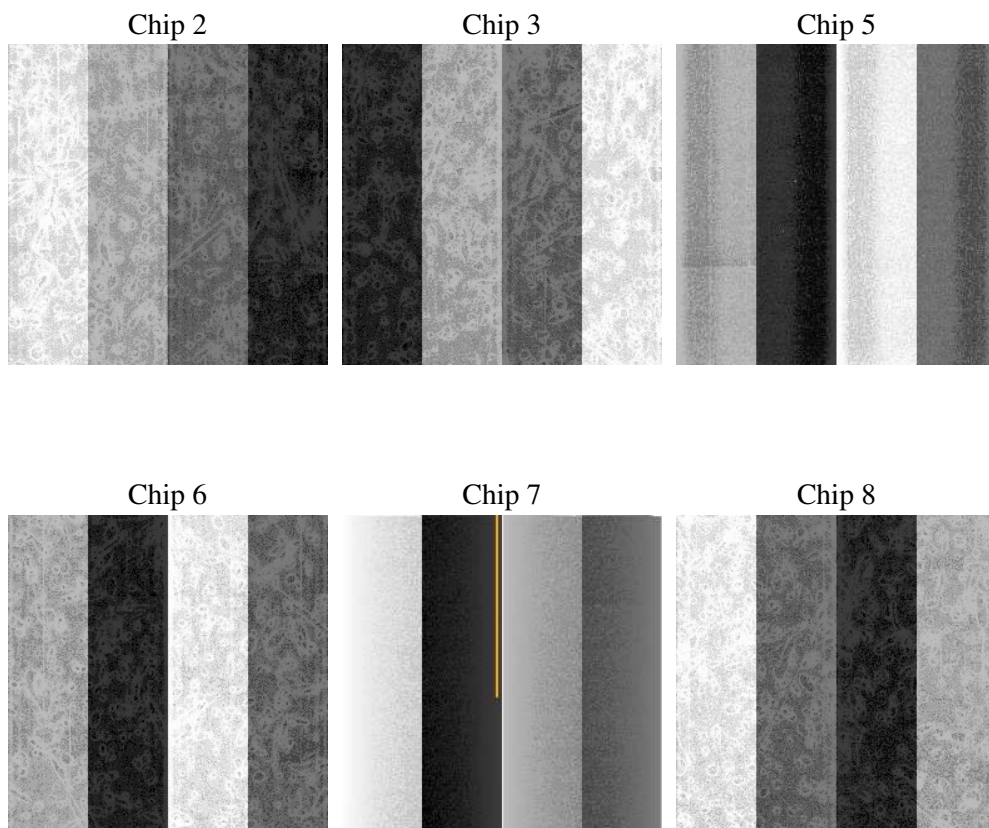
## 2 OBI

### 2.1 OBI

#### 2.1.1 Images



#### 2.1.2 Bias



### 2.1.3 Parameters

obi_num	0
ascdsver	7.6.9
caldsver	3.2.4
date	2006-11-15T17:05:14
revision	2

sched_exp_time	5000.000000
ontime	4683.2463409603
ontime2	4683.2463409603
ontime3	4683.2463409603
ontime5	4683.2463409603
ontime6	4683.2463409603
ontime7	4683.2463409603
ontime8	4680.0052710176
l1events	217737

### 2.1.4 Events

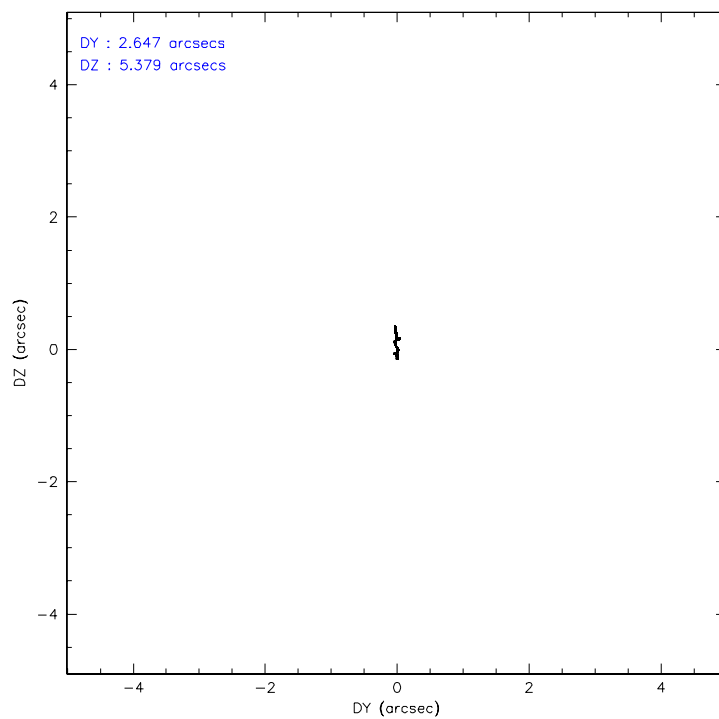
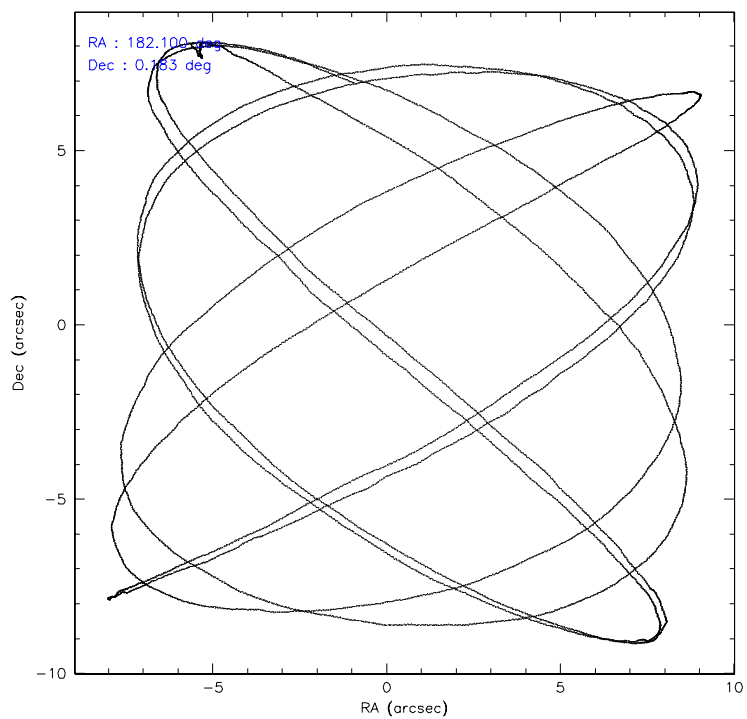
	ccd 2	ccd 3	ccd 5	ccd 6	ccd 7	ccd 8
level 1 events	32824	29519	45188	30594	38873	40739
rejected events	29451	26196	24702	27034	23954	33155
rejected %	89%	88%	54%	88%	61%	81%

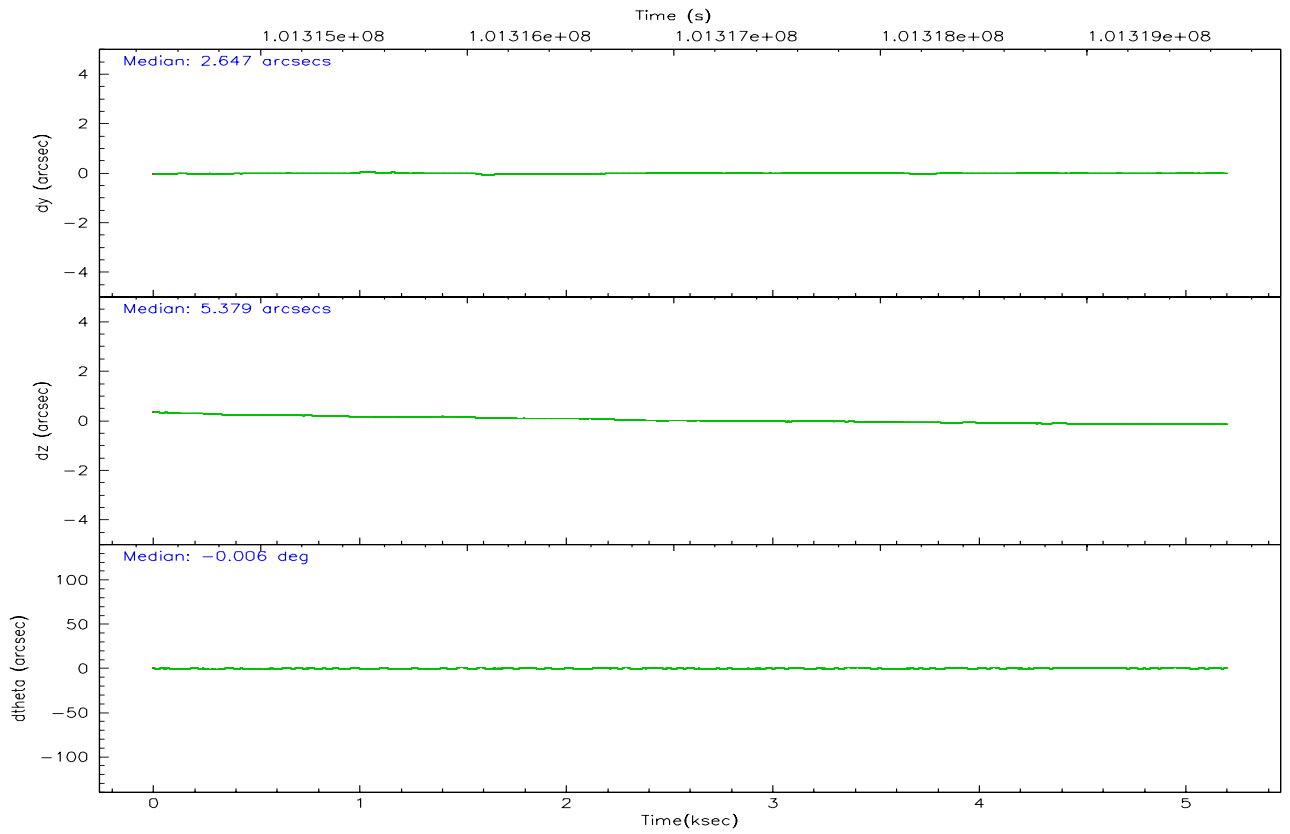
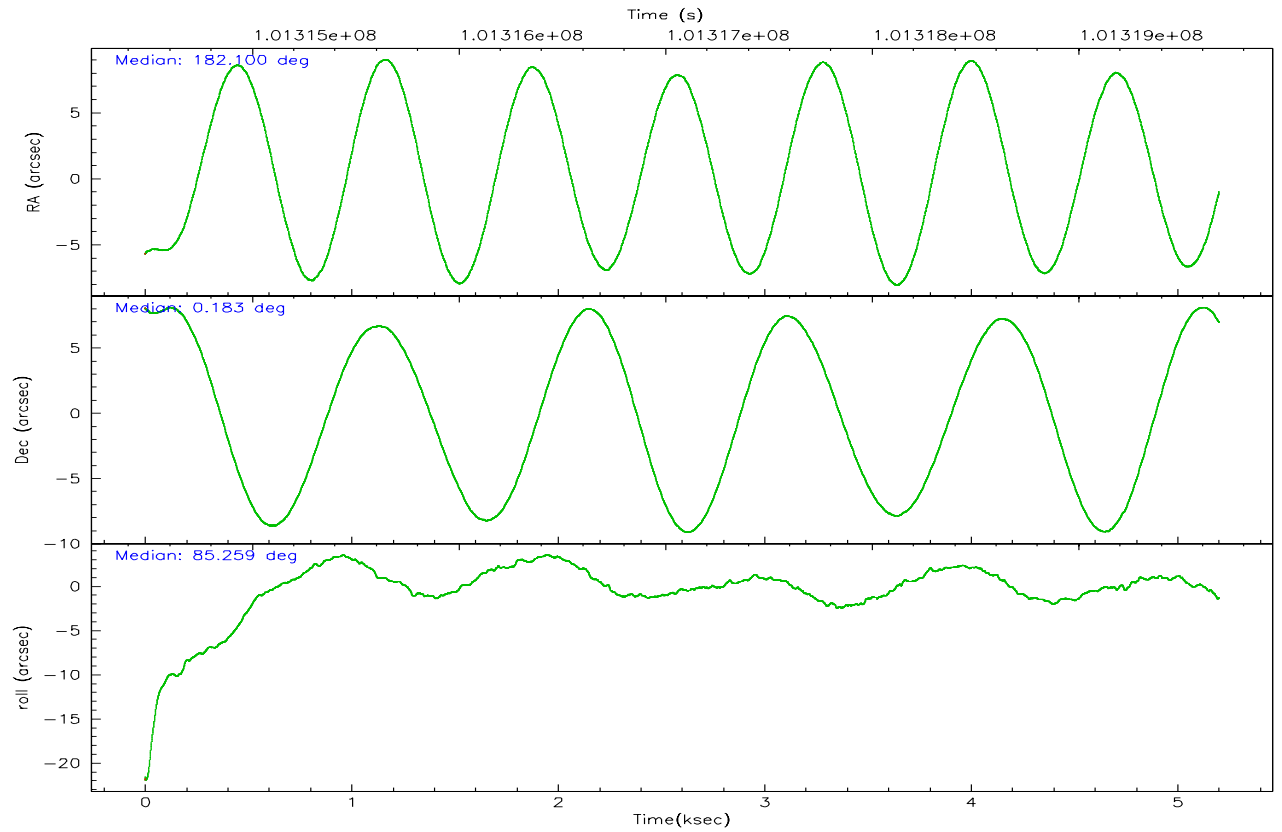
	ccd 2	ccd 3	ccd 5	ccd 6	ccd 7	ccd 8
grade 0 events	1367	1371	2504	1468	948	2534
	4%	4%	5%	4%	2%	6%
grade 1 events	15	11	155	14	31	37
	0%	0%	0%	0%	0%	0%
grade 2 events	780	703	6183	710	3684	1546
	2%	2%	13%	2%	9%	3%
grade 3 events	306	324	474	360	800	821
	0%	1%	1%	1%	2%	2%
grade 4 events	303	322	426	319	774	755
	0%	1%	0%	1%	1%	1%
grade 5 events	1094	1171	2215	1247	2697	1573
	3%	3%	4%	4%	6%	3%
grade 6 events	619	605	10911	705	8724	1932
	1%	2%	24%	2%	22%	4%
grade 7 events	28340	25012	22320	25771	21215	31541
	86%	84%	49%	84%	54%	77%

## 2.2 Compared Parameters

Parameter	Planned	Actual	Parameter	Planned	Actual
Instrument	ACIS	ACIS	Obspar format version number	6	6
Detector	ACIS-235678	ACIS-235678	Obspar file type	PREDICTED	ACTUAL
Grating	NONE	NONE	Obspar update status	NONE	UPDATED
Data mode	FAINT	FAINT	Number of optional ACIS chips dropped	0	0
Observation mode	POINTING	POINTING	On-chip summing requested	N	N
Pointing RA	182.112333	182.1003465915809	Subarray requested	NONE	NONE
Pointing Dec	0.158132	0.1827894991851677	Alternating exposures requested	N	N
Pointing Roll	85.104289	85.26094608727537	Primary exposure time	0.000000	3.2
SIM focus pos (mm)	-0.684267	-0.6828225247311905			
SIM defocus (mm)	0	0.001444936568705701			
SIM translation stage pos (mm)	-190.132523	-190.1425803651734			
SIM translation stage offset (mm)	0	0.01005778216563158			
Observation start time	101314681.184000	101313978.59372			
Observation start date	2001-03-18T14:56:57	2001-03-18T14:46:18			
Observation end time	101319681.184000	101320303.86897			
Observation end date	2001-03-18T16:20:17	2001-03-18T16:31:43			
Read mode	TIMED	TIMED			

## 2.3 Aspect



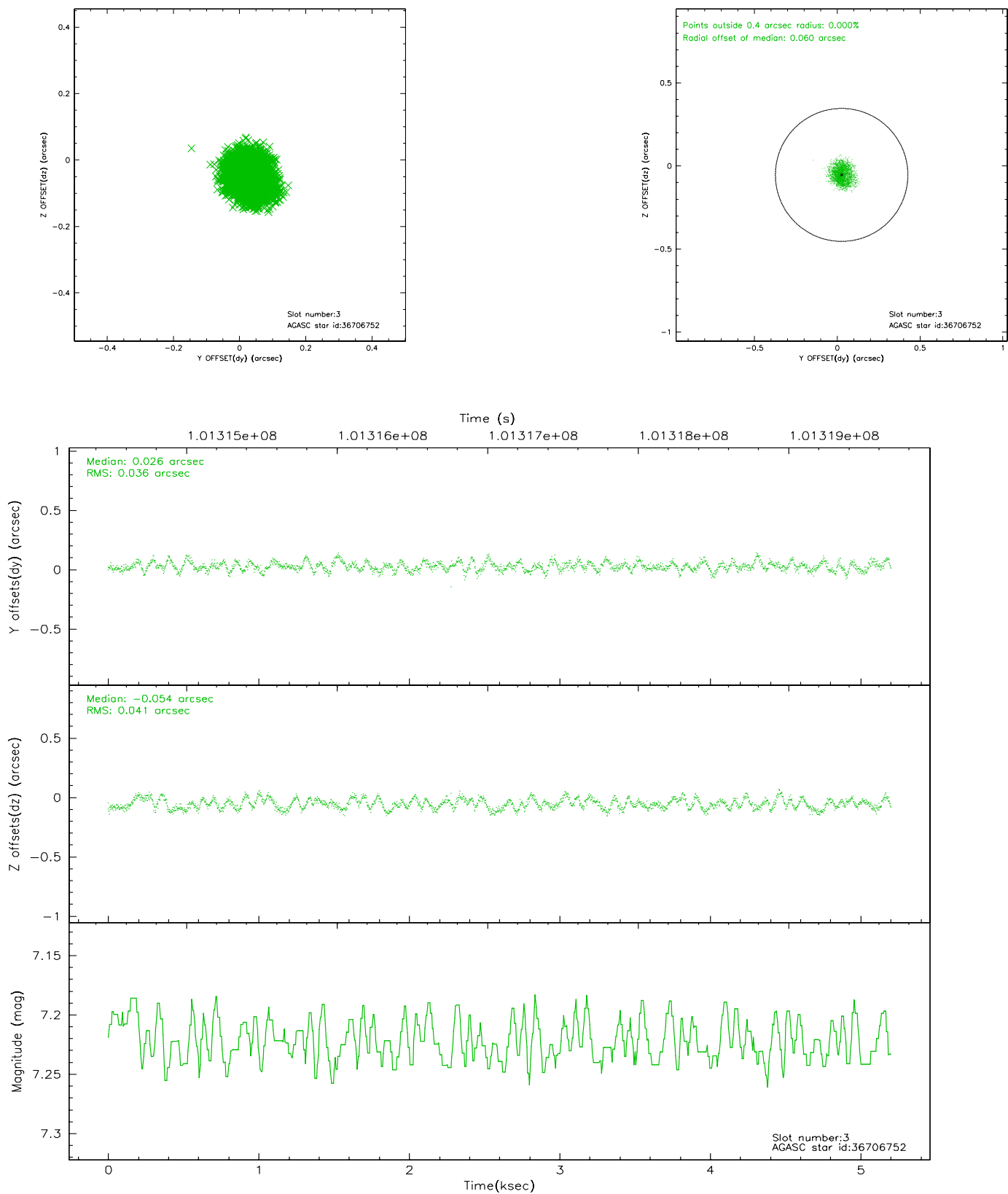


### Slot Statistics

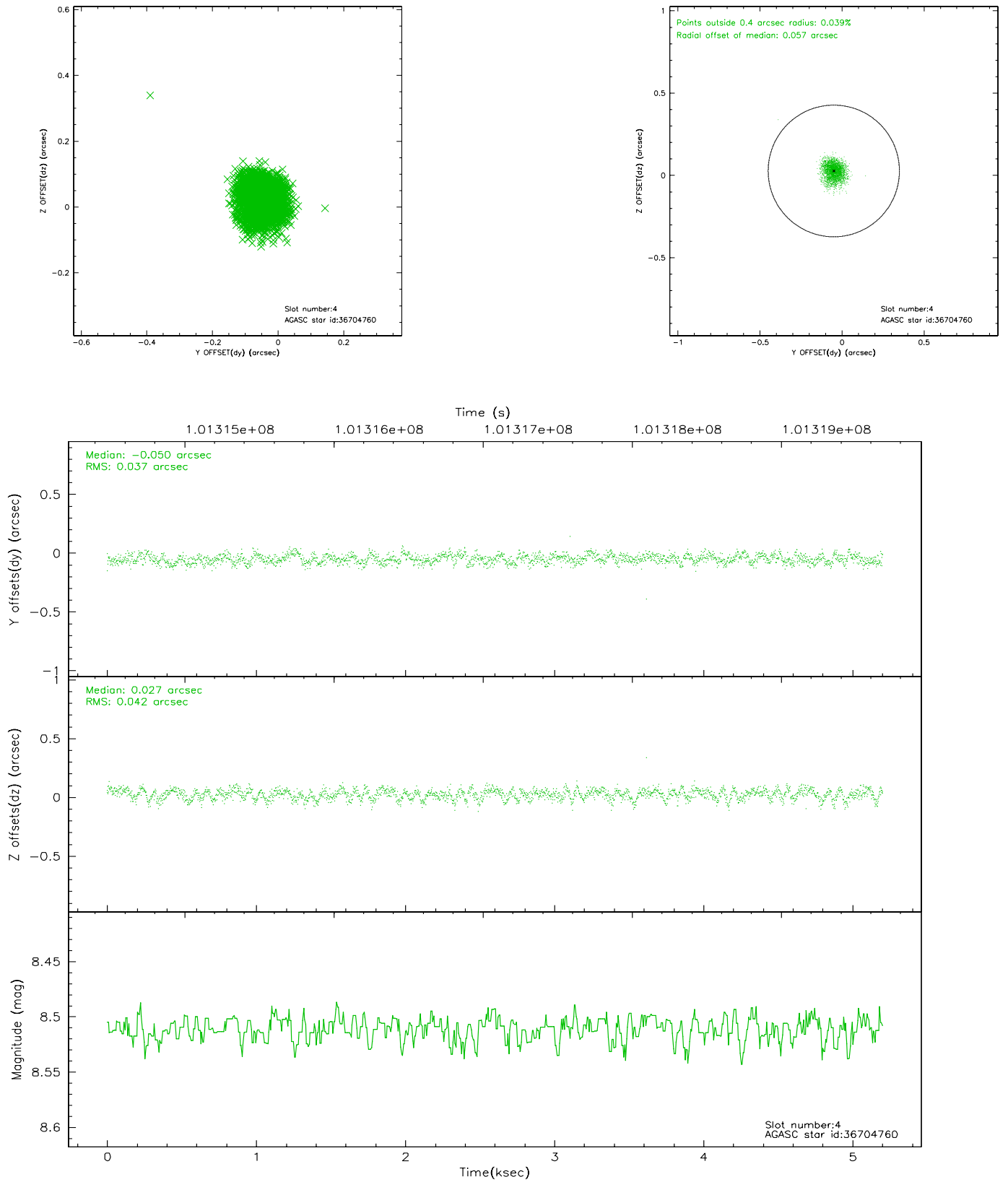
slot	status	id	mag	n_pts	med_dy	med_dz	dr1	dr2	ra	dec	mean_y	mean_z
0	FID	ACIS-S-2	7.11	1270	-0.023	0.018	0.007	0.011	0.000000	0.000000	-755.25	-1726.49
1	FID	ACIS-S-4	7.20	1270	-0.064	0.006	0.005	0.009	0.000000	0.000000	2157.41	180.86
2	FID	ACIS-S-5	7.24	1270	0.055	-0.015	0.006	0.011	0.000000	0.000000	-1806.57	175.72
3	GUIDE	36706752	7.22	2539	0.026	-0.054	0.060	0.090	182.002452	0.621299	1627.44	535.87
4	GUIDE	36704760	8.51	2538	-0.050	0.027	0.060	0.095	181.817344	0.421309	853.82	1138.63
5	GUIDE	36702928	8.74	2539	-0.034	0.055	0.073	0.117	181.676609	0.274116	282.28	1598.54
6	GUIDE	647502368	9.11	2538	-0.039	0.112	0.084	0.133	182.712996	-0.444474	-1976.96	-2339.57
7	GUIDE	647366016	9.42	2537	0.095	-0.139	0.076	0.122	182.032410	-0.398174	-2020.72	114.09

## 2.4 Star Slots

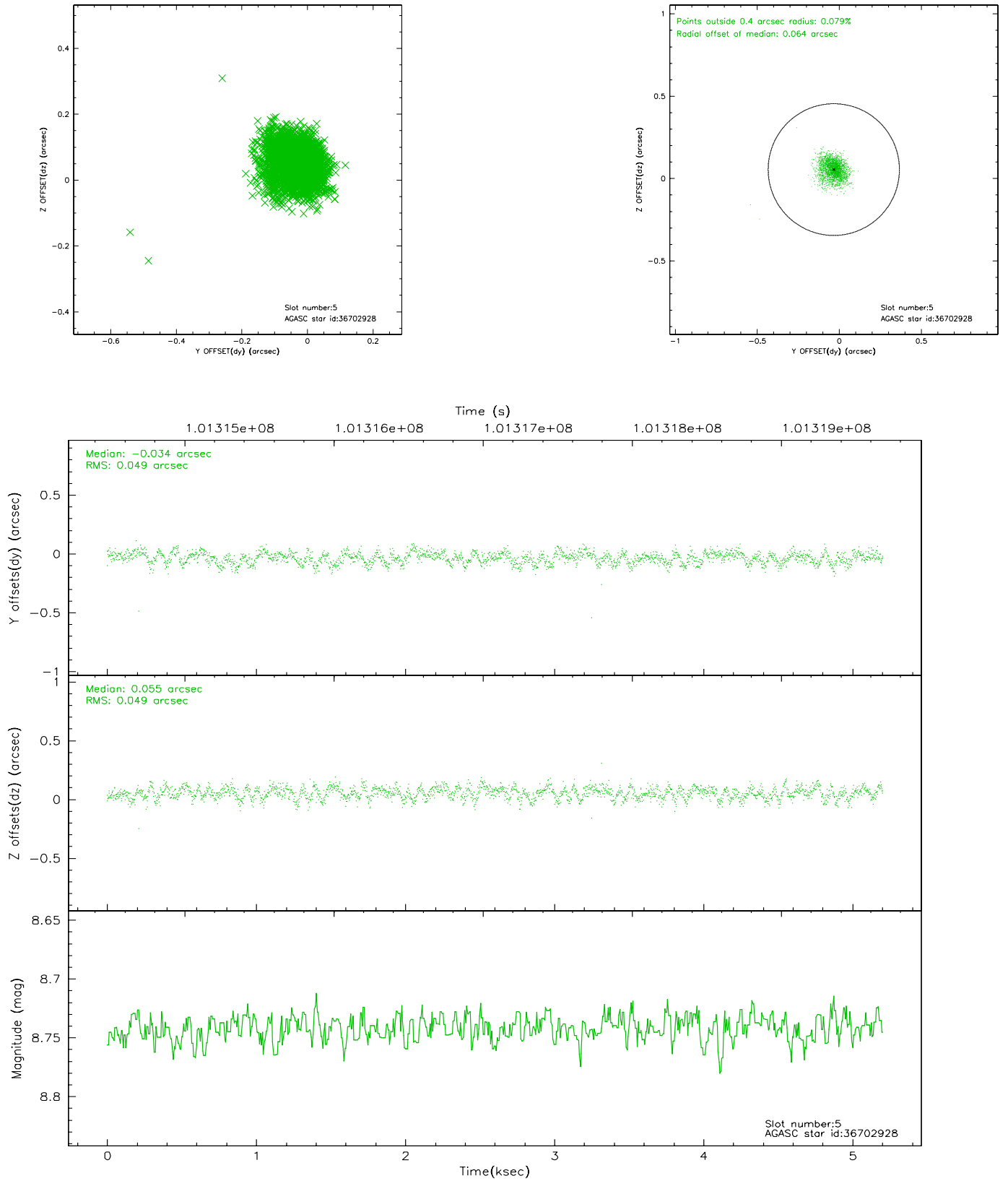
### 2.4.1 Slot 3



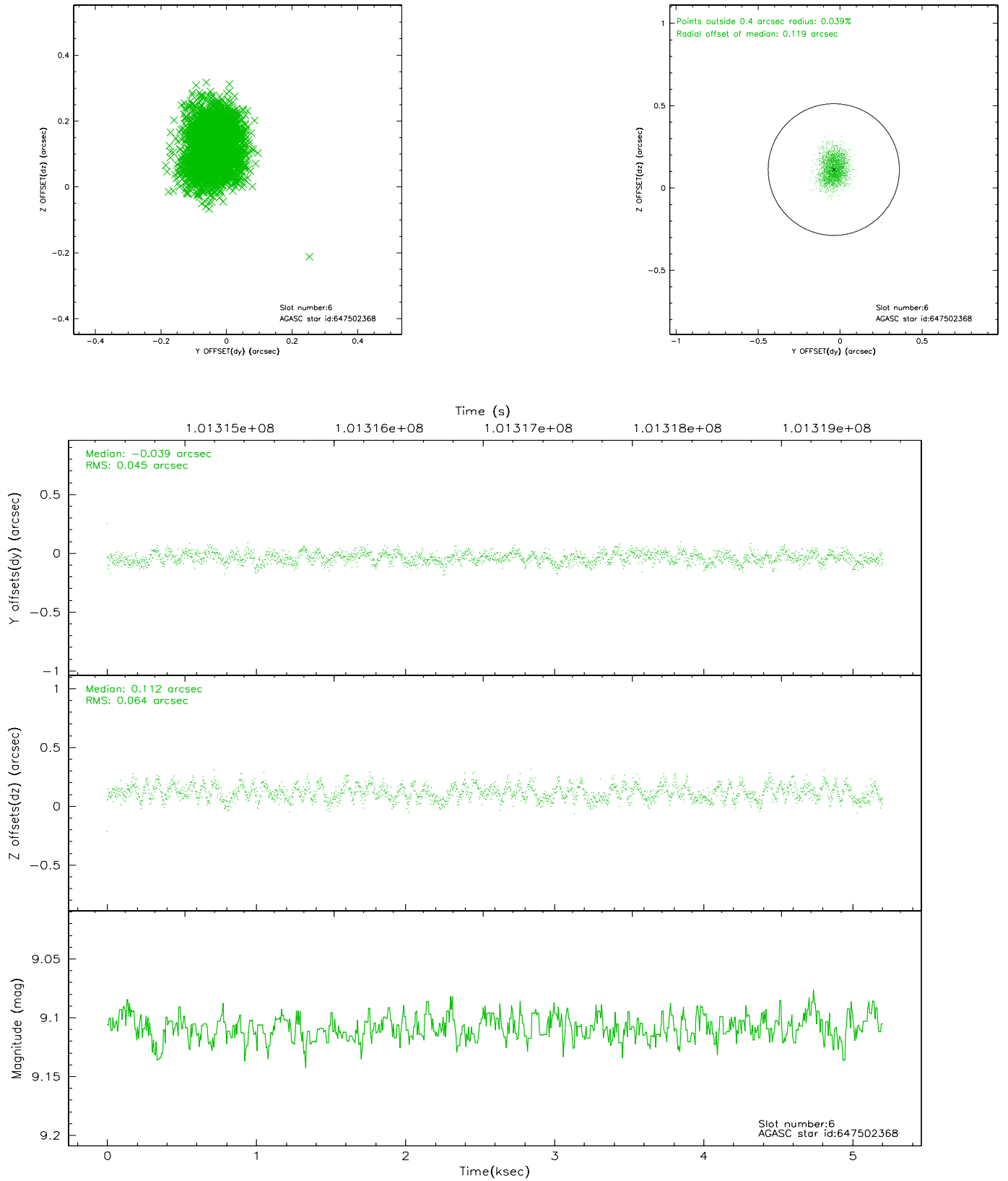
## 2.4.2 Slot 4



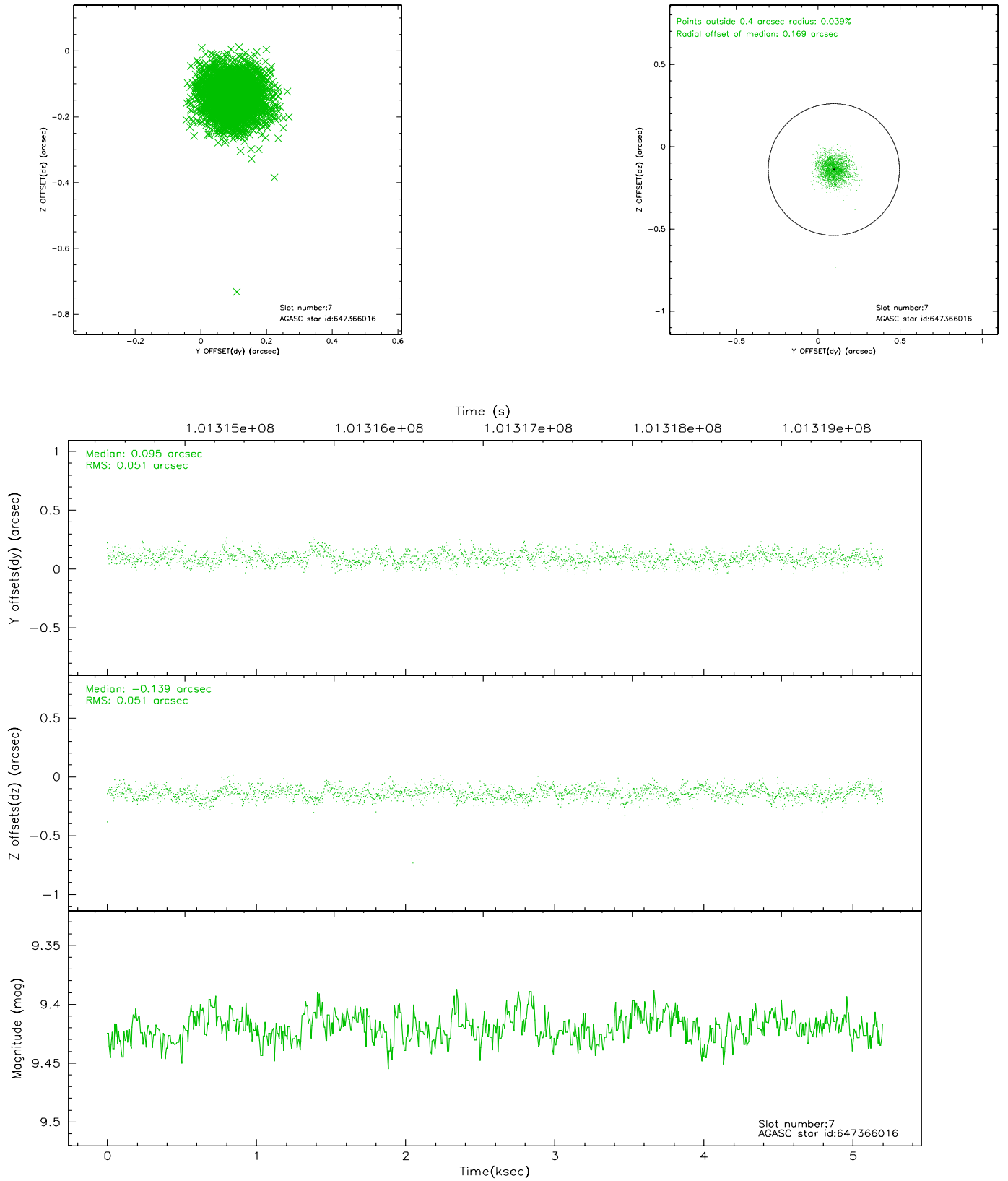
### 2.4.3 Slot 5



## 2.4.4 Slot 6

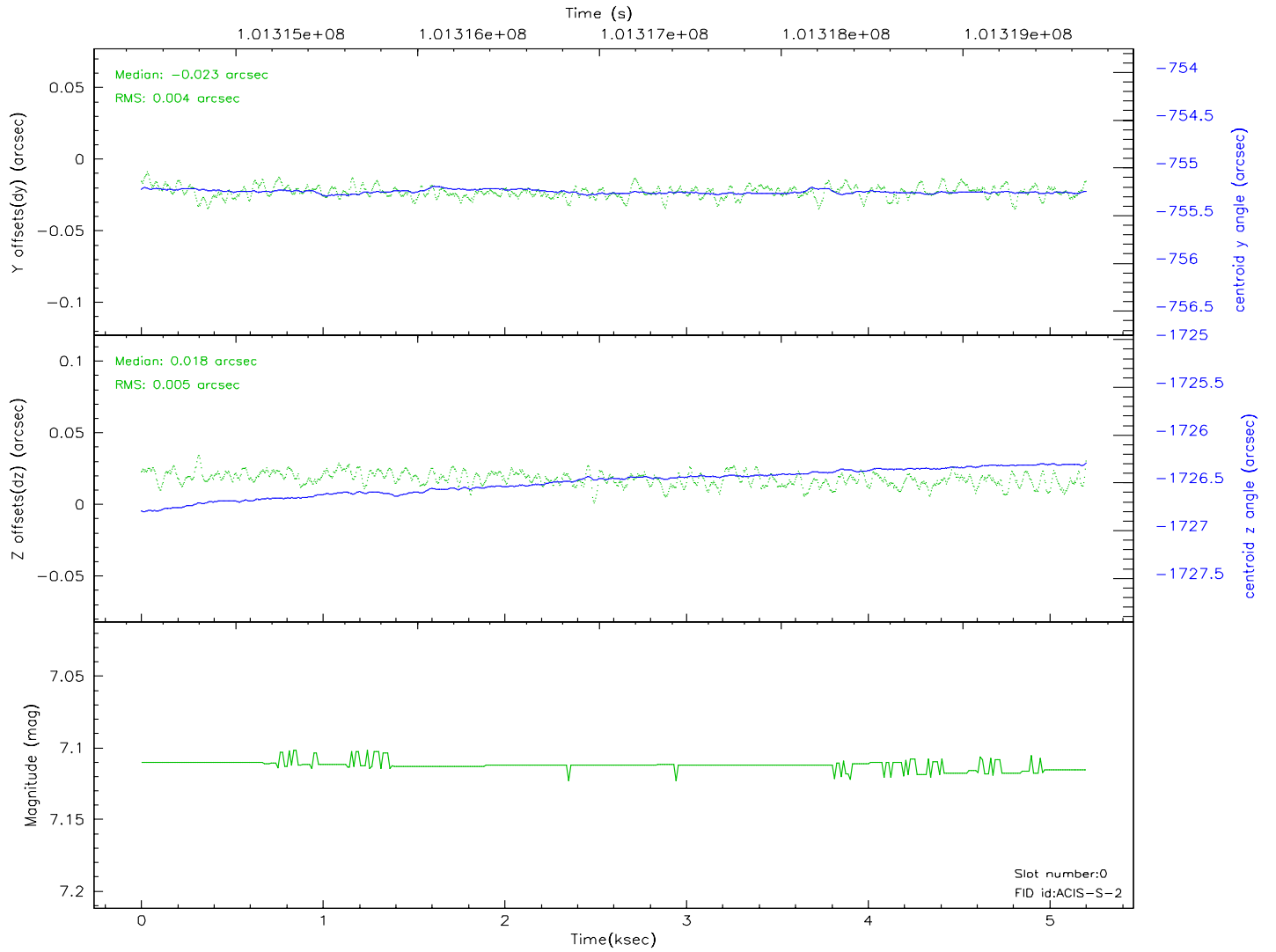
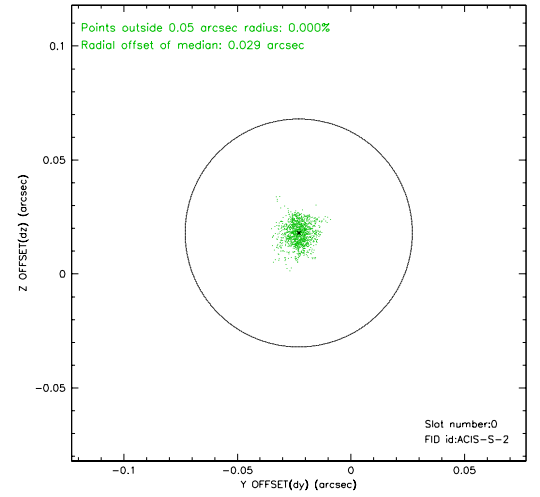
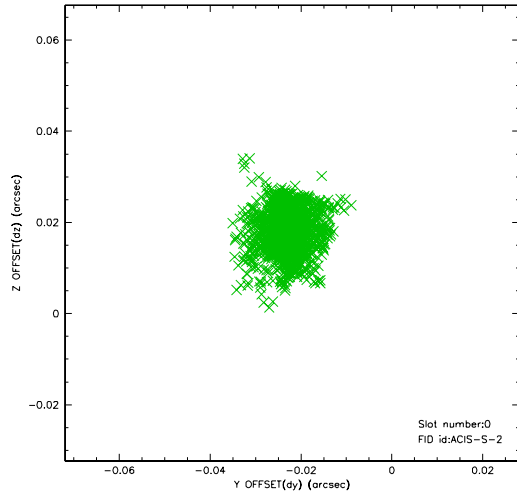


## 2.4.5 Slot 7

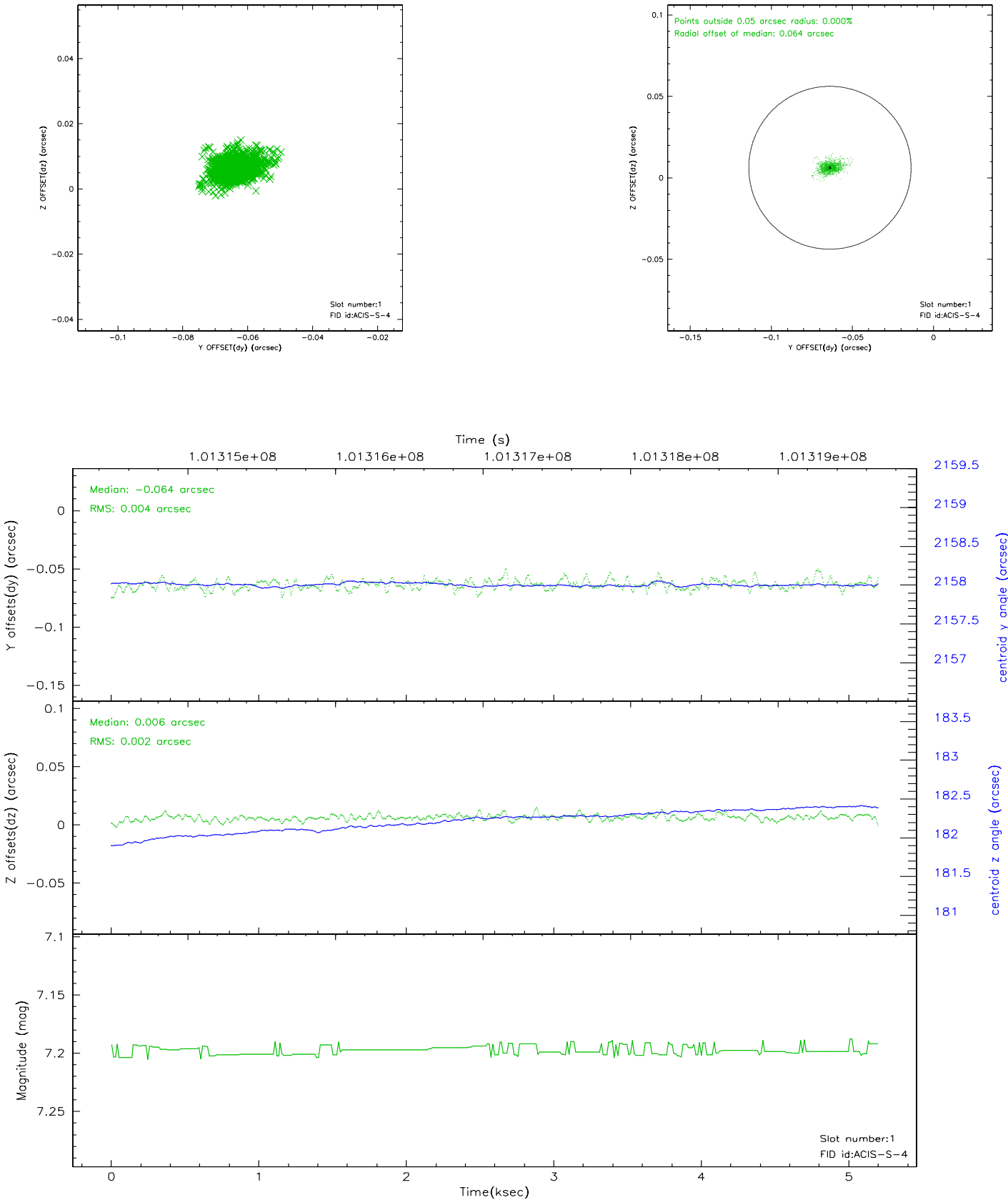


## 2.5 FID Slots

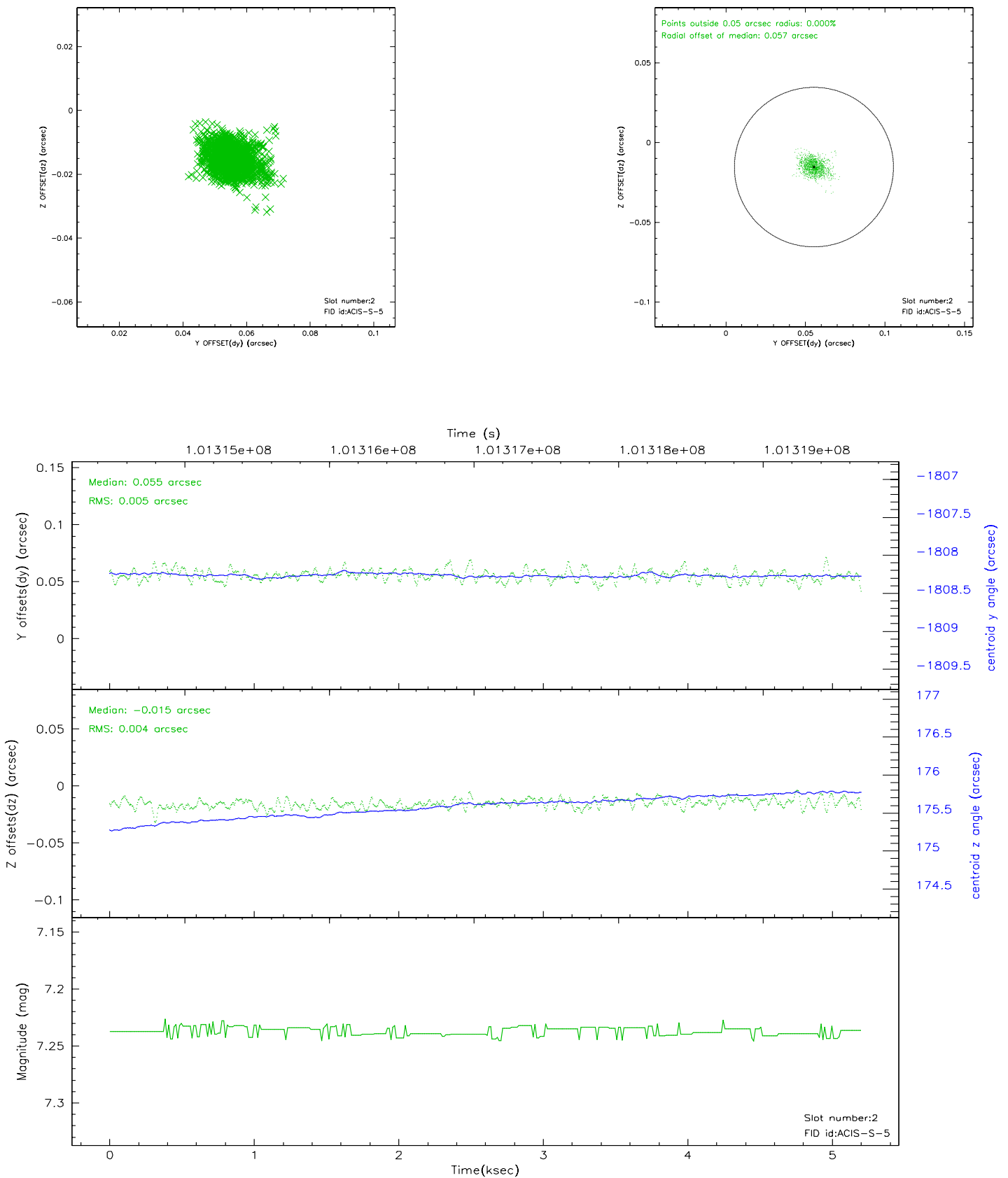
### 2.5.1 Slot 0



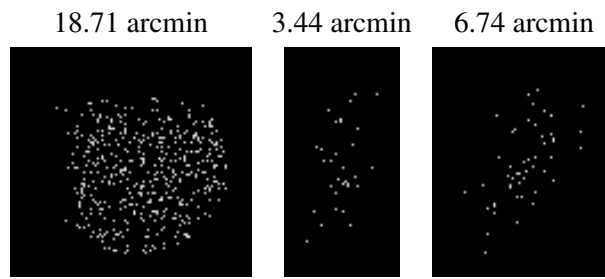
2.5.2 Slot 1



### 2.5.3 Slot 2



### 3 Point Sources



## A Summary

### A.1 Status

V&V Scientist	Jen Lauer
V&V Date (YYYY-MM-DD)	2006.11.15
V&V Edition	1
V&V Disposition and Status	OK
V&V Charge Time	4.678

### A.2 Comments