

V&V Reference Report

L2 ASCDS Version : 7.6.10

Observation 1644 - L2 Version 001
Chandra X-Ray Center

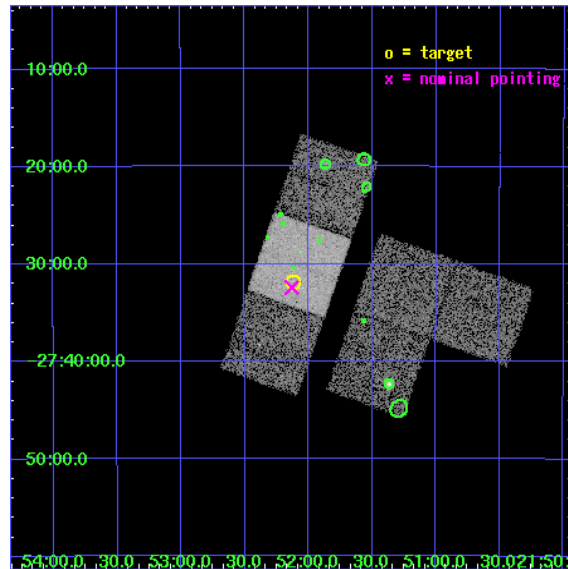
L2 Processing Date : Jun 16 2007

Contents

1	Front	2
2	OBI	3
2.1	OBI	3
2.1.1	Images	3
2.1.2	Bias	3
2.1.3	Parameters	4
2.1.4	Events	4
2.2	Compared Parameters	5
2.3	Aspect	6
2.4	Star Slots	9
2.4.1	Slot 3	9
2.4.2	Slot 4	10
2.4.3	Slot 5	11
2.4.4	Slot 6	12
2.4.5	Slot 7	13
2.5	FID Slots	14
2.5.1	Slot 0	14
2.5.2	Slot 1	15
2.5.3	Slot 2	16
3	Point Sources	17
A	Summary	18
A.1	Status	18
A.2	Comments	18

1 Front

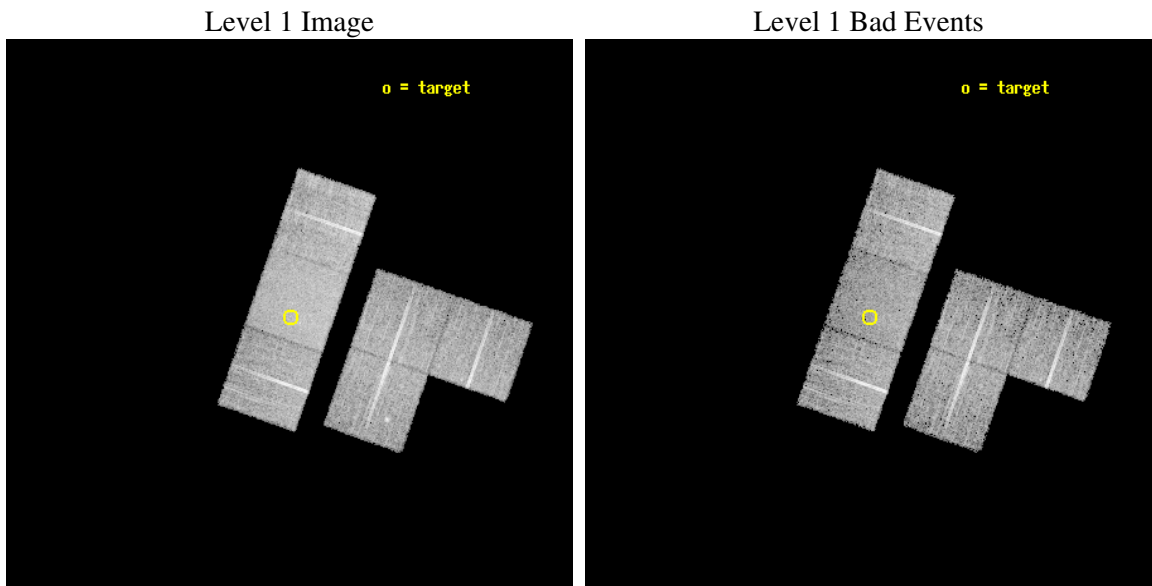
seq_num	700260
obs_id	1644
title	CHANDRA OBSERVATIONS OF GRAVITATIONALLY LENSED QUASARS WITH INTRINSIC ABSORPTION
observer	Prof. Gordon Garmire
object	HE2149-2745
dtcycle	0
cycle	P
ra_targ	328.030833
dec_targ	-27.530556
ra_nom	328.03257200912
dec_nom	-27.540321769609
roll_nom	289.24874625284
revision	2
ontime	9798.4000091255
livetime	9674.3267683218
ontime1	9798.4000091255
ontime2	9798.4000091255
ontime3	9795.1590189636
ontime6	9798.4000091255
ontime7	9798.4000091255
ontime8	9798.4000091255
l2events	62683



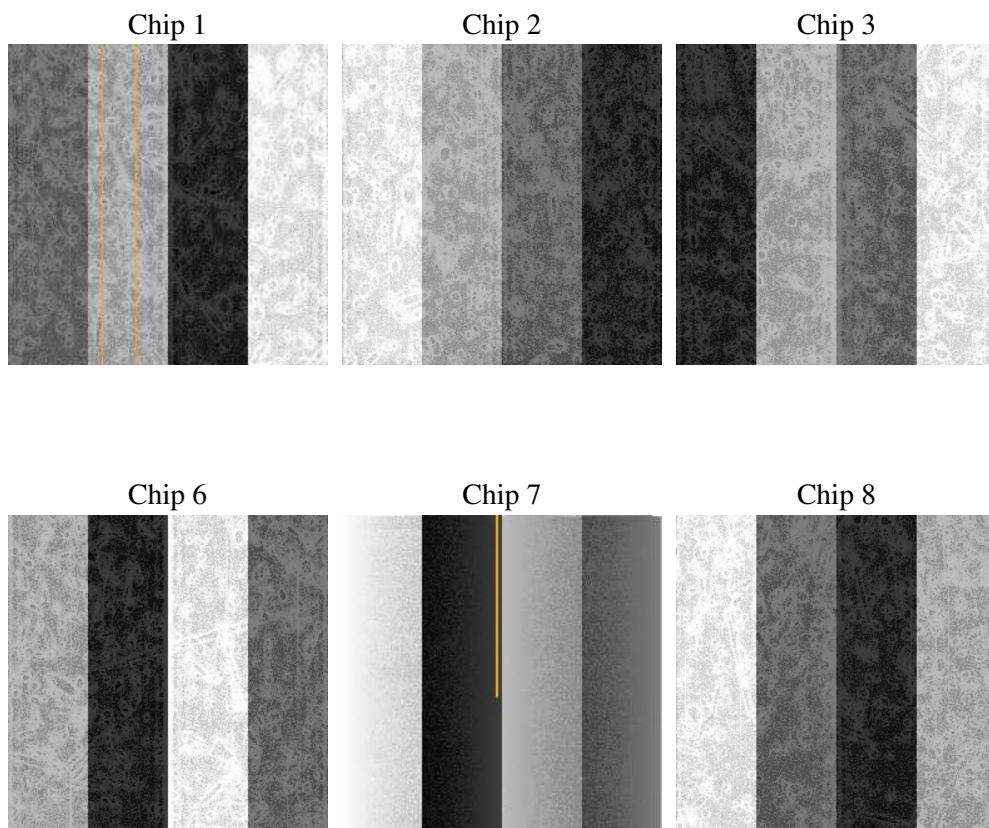
2 OBI

2.1 OBI

2.1.1 Images



2.1.2 Bias



2.1.3 Parameters

obi_num	0
ascdsver	7.6.10
caldbver	3.4.0
date	2007-06-16T19:34:58
revision	2

sched_exp_time	9845.912000
ontime	9798.4000091255
ontime1	9798.4000091255
ontime2	9798.4000091255
ontime3	9795.1590189636
ontime6	9798.4000091255
ontime7	9798.4000091255
ontime8	9798.4000091255
l1events	374919

2.1.4 Events

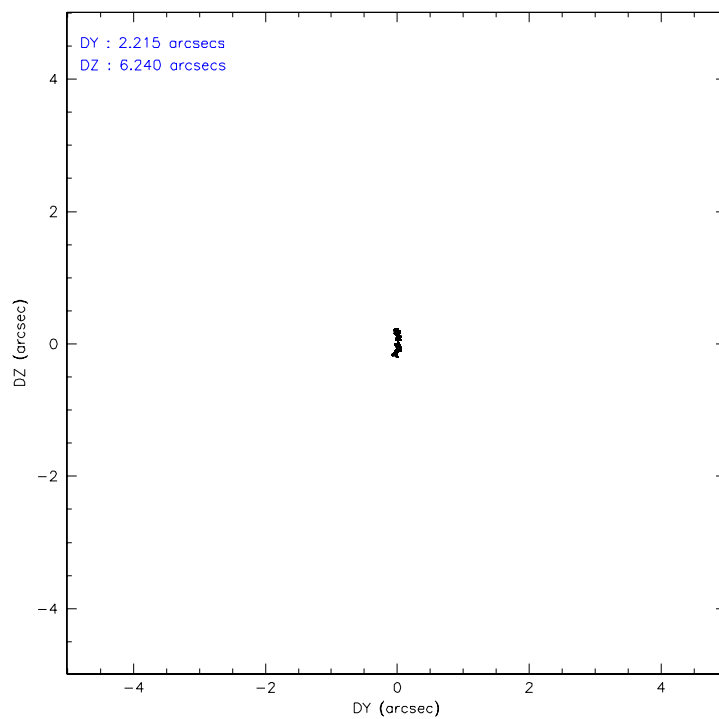
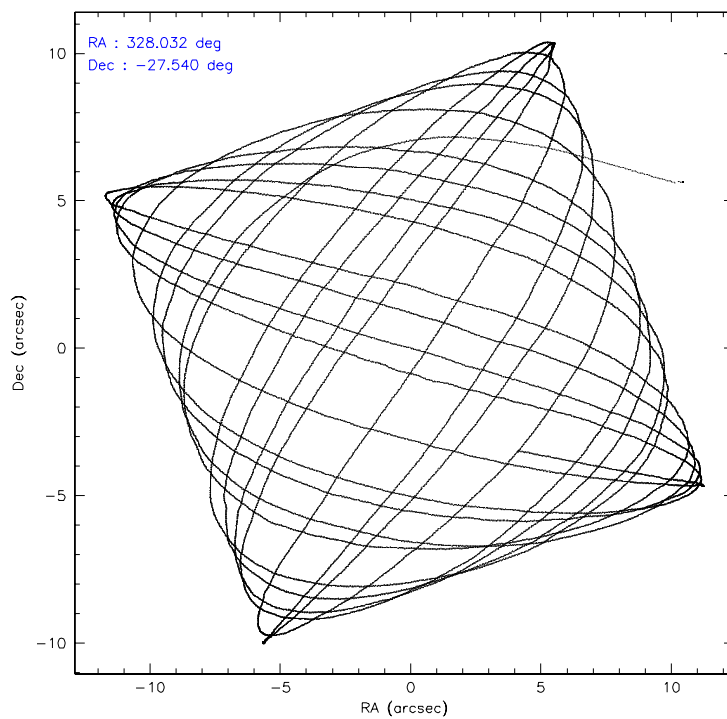
	ccd 1	ccd 2	ccd 3	ccd 6	ccd 7	ccd 8
level 1 events	54596	56810	56477	58992	75084	72960
rejected events	47631	49532	49808	52003	42520	57742
rejected %	87%	87%	88%	88%	56%	79%

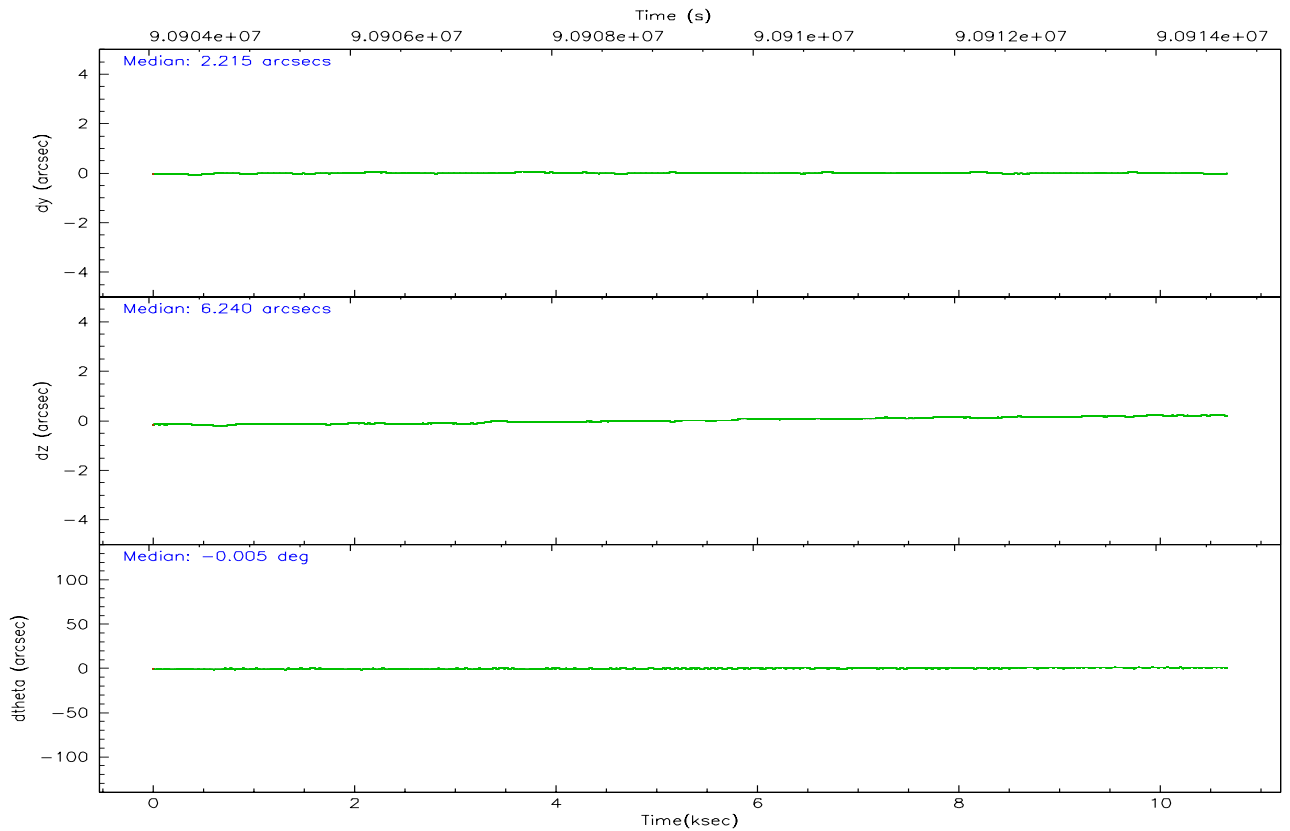
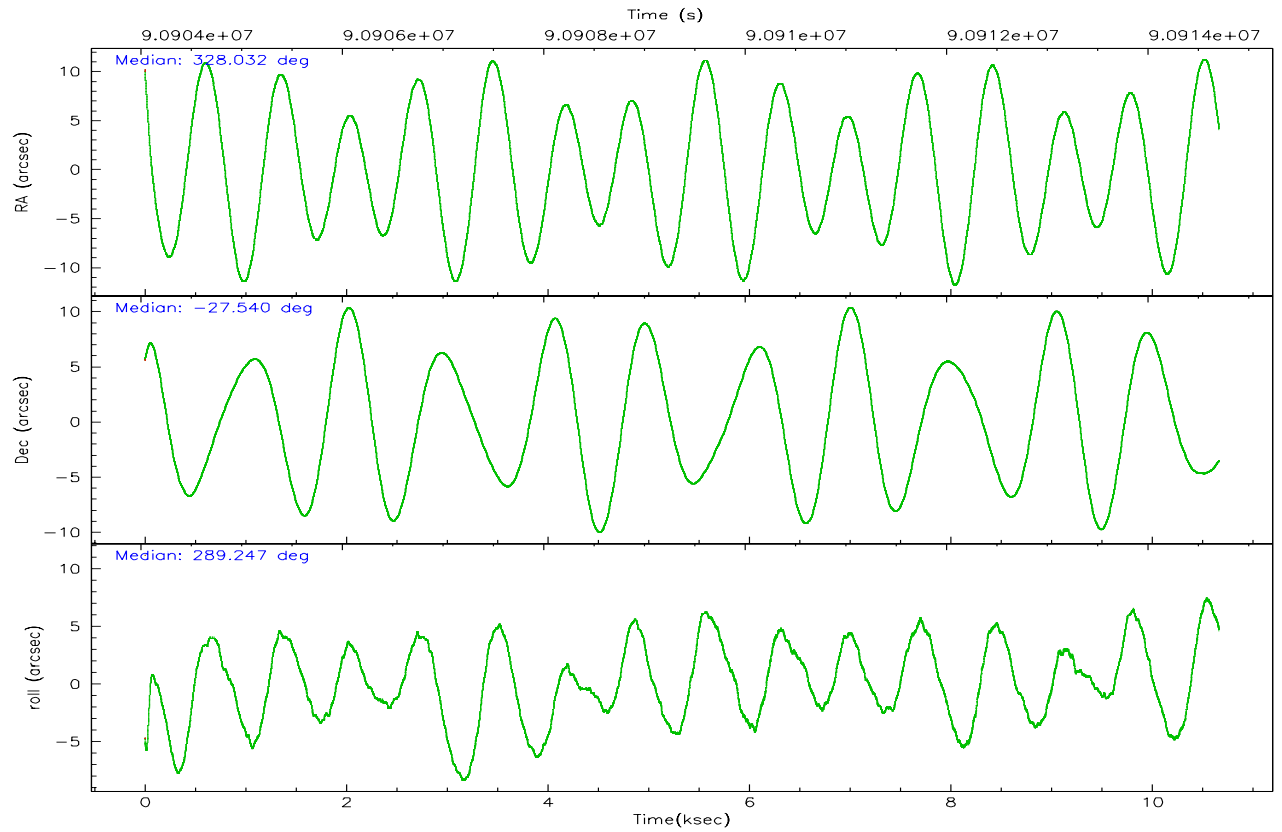
	ccd 1	ccd 2	ccd 3	ccd 6	ccd 7	ccd 8
grade 0 events	2840	3443	2952	2847	3452	5148
	5%	6%	5%	4%	4%	7%
grade 1 events	24	24	27	20	67	40
	0%	0%	0%	0%	0%	0%
grade 2 events	1404	1443	1290	1441	6267	3026
	2%	2%	2%	2%	8%	4%
grade 3 events	697	662	603	670	3142	1766
	1%	1%	1%	1%	4%	2%
grade 4 events	723	623	630	611	2964	1560
	1%	1%	1%	1%	3%	2%
grade 5 events	2235	1893	2229	2516	7015	3060
	4%	3%	3%	4%	9%	4%
grade 6 events	1304	1109	1199	1426	16749	3746
	2%	1%	2%	2%	22%	5%
grade 7 events	45369	47613	47547	49461	35428	54614
	83%	83%	84%	83%	47%	74%

2.2 Compared Parameters

Parameter	Planned	Actual	Parameter	Planned	Actual
Instrument	ACIS	ACIS	Obspar format version number	6	6
Detector	ACIS-123678	ACIS-123678	Obspar file type	PREDICTED	ACTUAL
Grating	NONE	NONE	Obspar update status	NONE	UPDATED
Data mode	FAINT	FAINT	Number of optional ACIS chips dropped	0	0
Observation mode	POINTING	POINTING	On-chip summing requested	N	N
Pointing RA	328.009034	328.0325720091197	Subarray requested	NONE	NONE
Pointing Dec	-27.522609	-27.54032176960938	Alternating exposures requested	N	N
Pointing Roll	289.081254	289.2487462528354	Primary exposure time	0.000000	3.2
SIM focus pos (mm)	-0.684267	-0.6828225247311905			
SIM defocus (mm)	0	0.001444936568705701			
SIM translation stage pos (mm)	-190.132523	-190.1400660498719			
SIM translation stage offset (mm)	0	0.00754346686406393			
Observation start time	90904859.184000	90903582.09386399			
Observation start date	2000-11-18T03:19:55	2000-11-18T02:59:42			
Observation end time	90914705.184000	90915019.55680101			
Observation end date	2000-11-18T06:04:01	2000-11-18T06:10:19			
Read mode	TIMED	TIMED			

2.3 Aspect



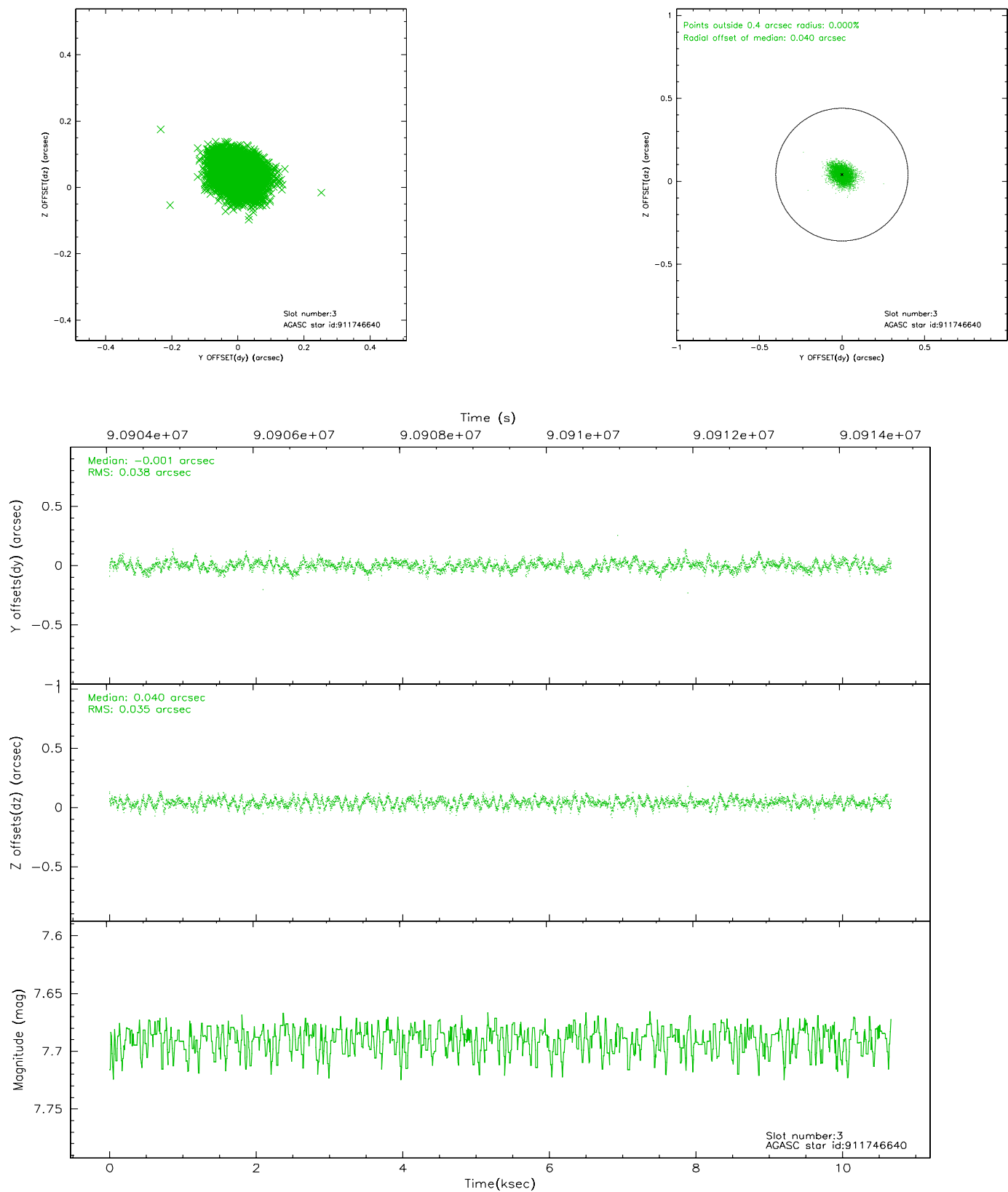


Slot Statistics

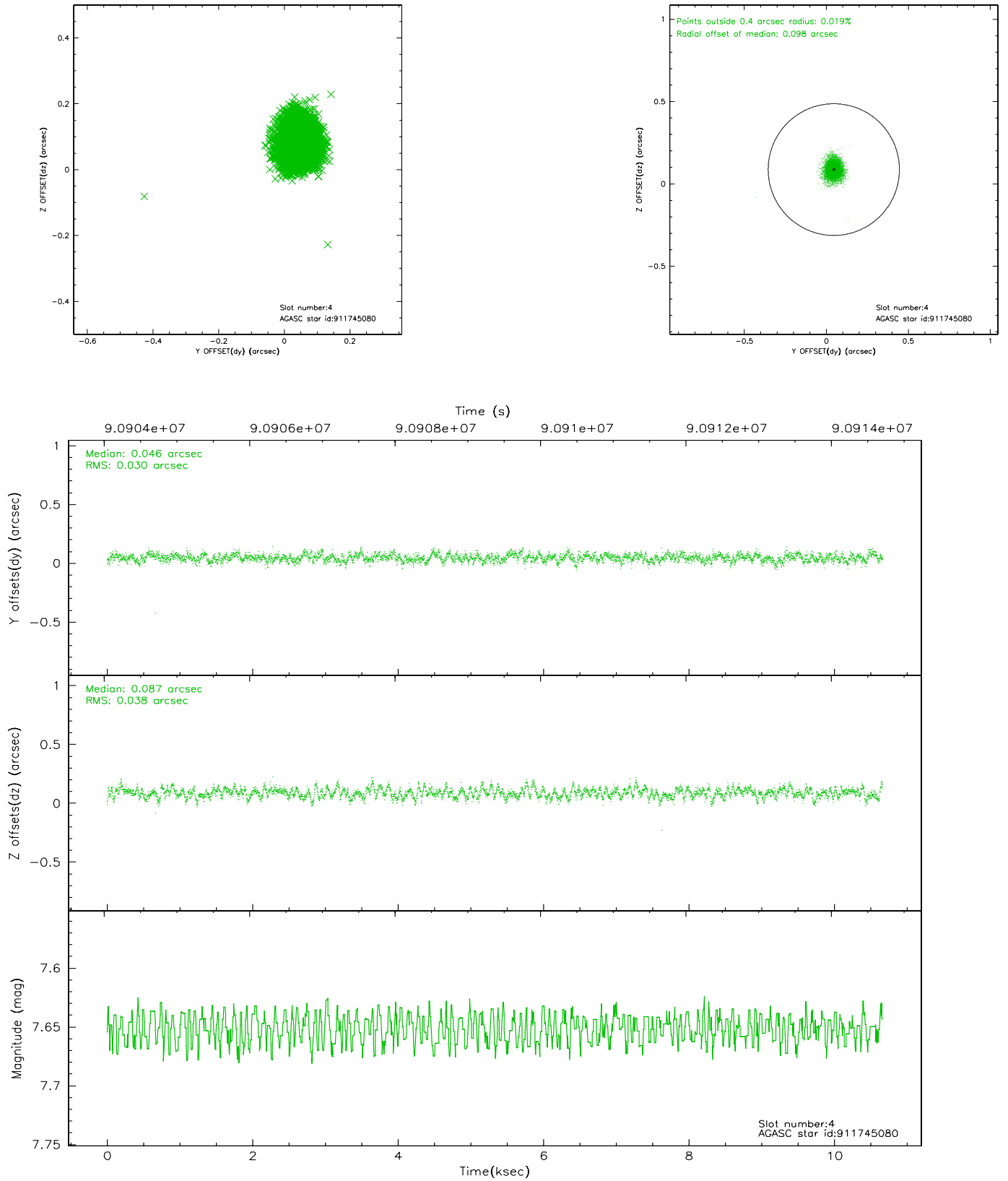
slot	status	id	mag	n_pts	med_dy	med_dz	dr1	dr2	ra	dec	mean_y	mean_z
0	FID	ACIS-S-2	7.11	2603	-0.027	0.025	0.007	0.012	0.000000	0.000000	-754.84	-1727.39
1	FID	ACIS-S-4	7.21	2603	-0.053	0.006	0.005	0.010	0.000000	0.000000	2158.17	180.61
2	FID	ACIS-S-5	7.24	2603	0.048	-0.023	0.006	0.011	0.000000	0.000000	-1807.00	174.76
3	GUIDE	911746640	7.69	5205	-0.001	0.040	0.054	0.089	328.120982	-27.315217	-586.98	583.02
4	GUIDE	911745080	7.65	5205	0.046	0.087	0.051	0.084	327.881685	-27.399142	-551.55	-238.64
5	GUIDE	911745704	8.45	5198	-0.059	0.083	0.056	0.089	328.153775	-27.104100	-1270.75	931.40
6	GUIDE	911739752	8.79	5202	-0.322	-0.203	0.072	0.113	327.086125	-27.144025	-2243.36	-2351.72
7	GUIDE	912135304	9.51	5197	0.335	-0.004	0.117	0.192	327.849640	-28.255842	2331.07	-1340.57

2.4 Star Slots

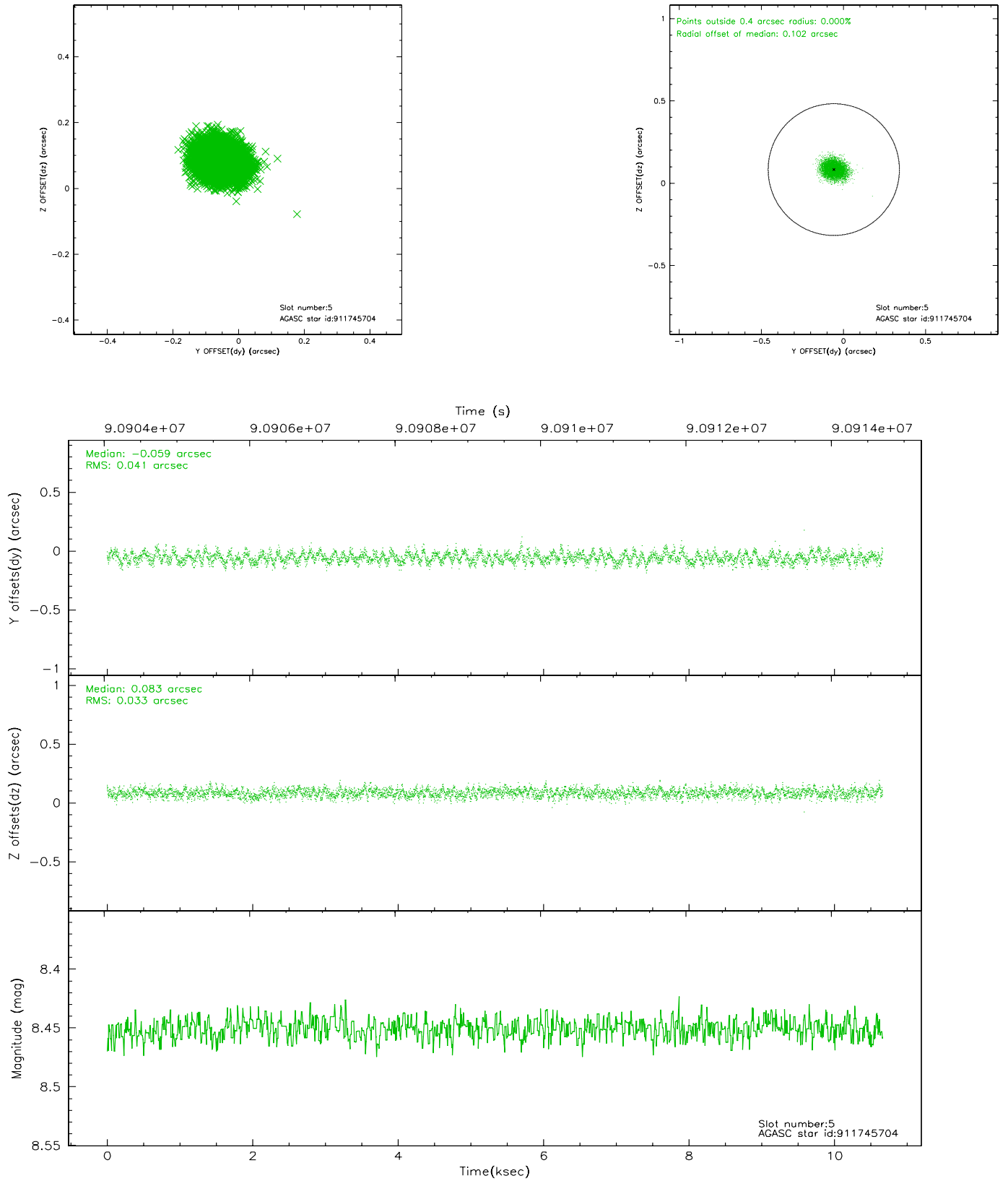
2.4.1 Slot 3



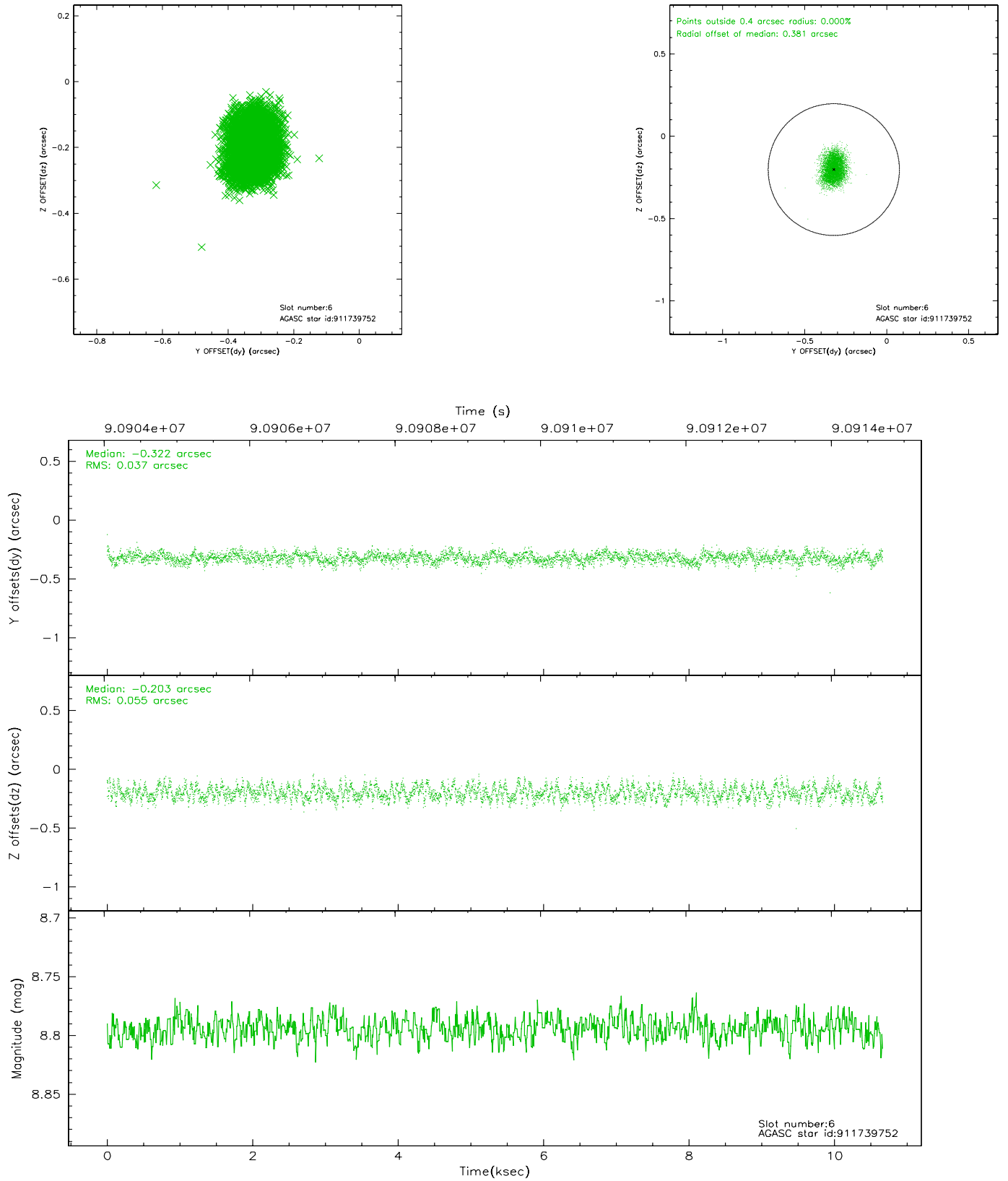
2.4.2 Slot 4



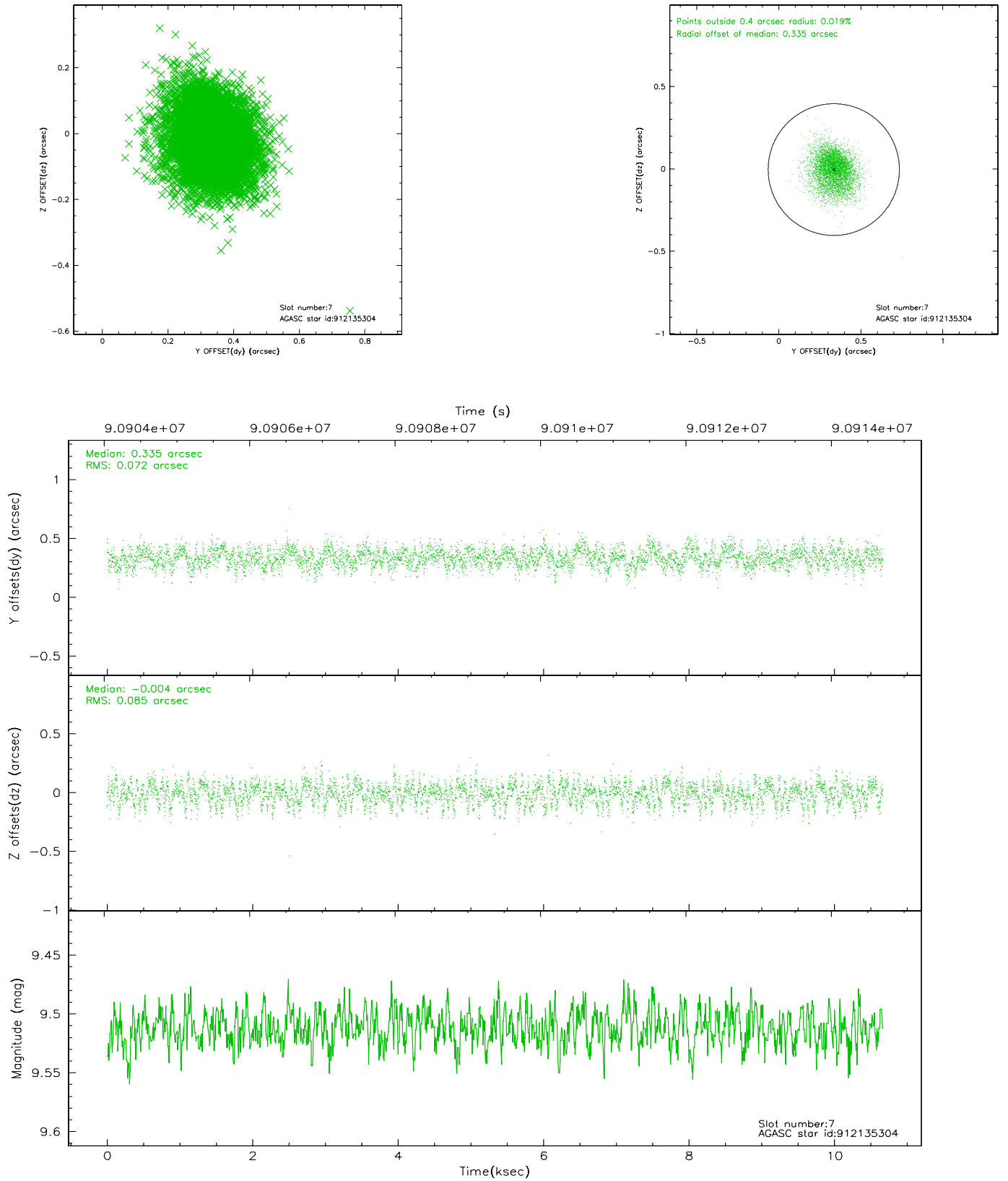
2.4.3 Slot 5



2.4.4 Slot 6

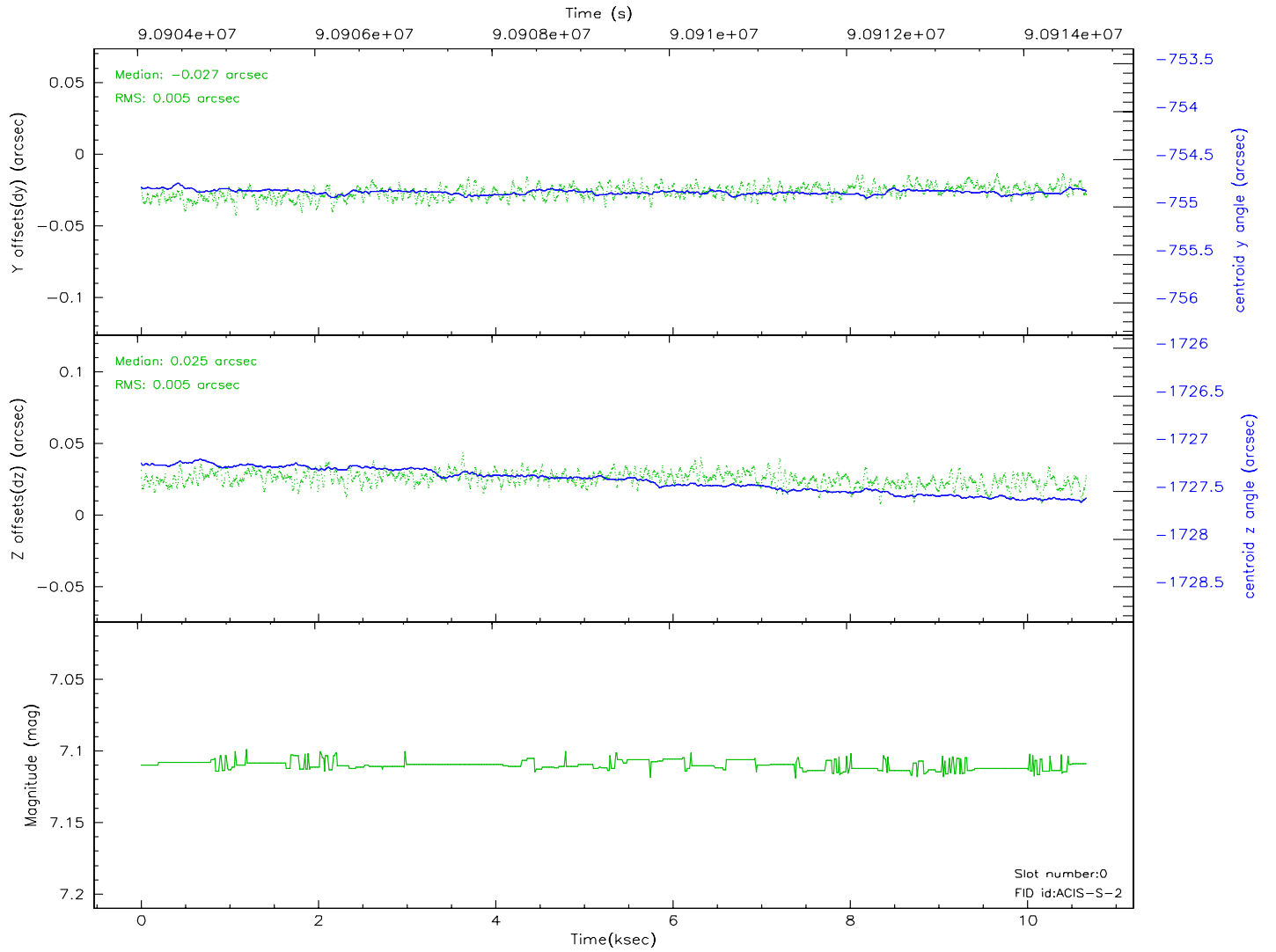
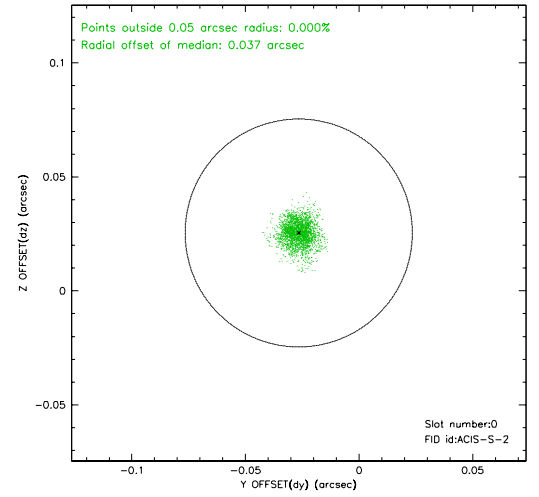
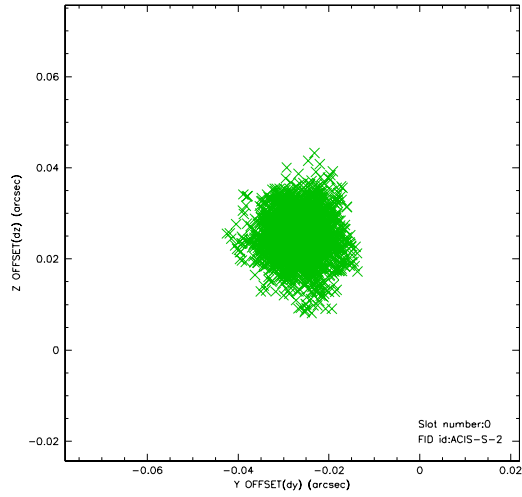


2.4.5 Slot 7

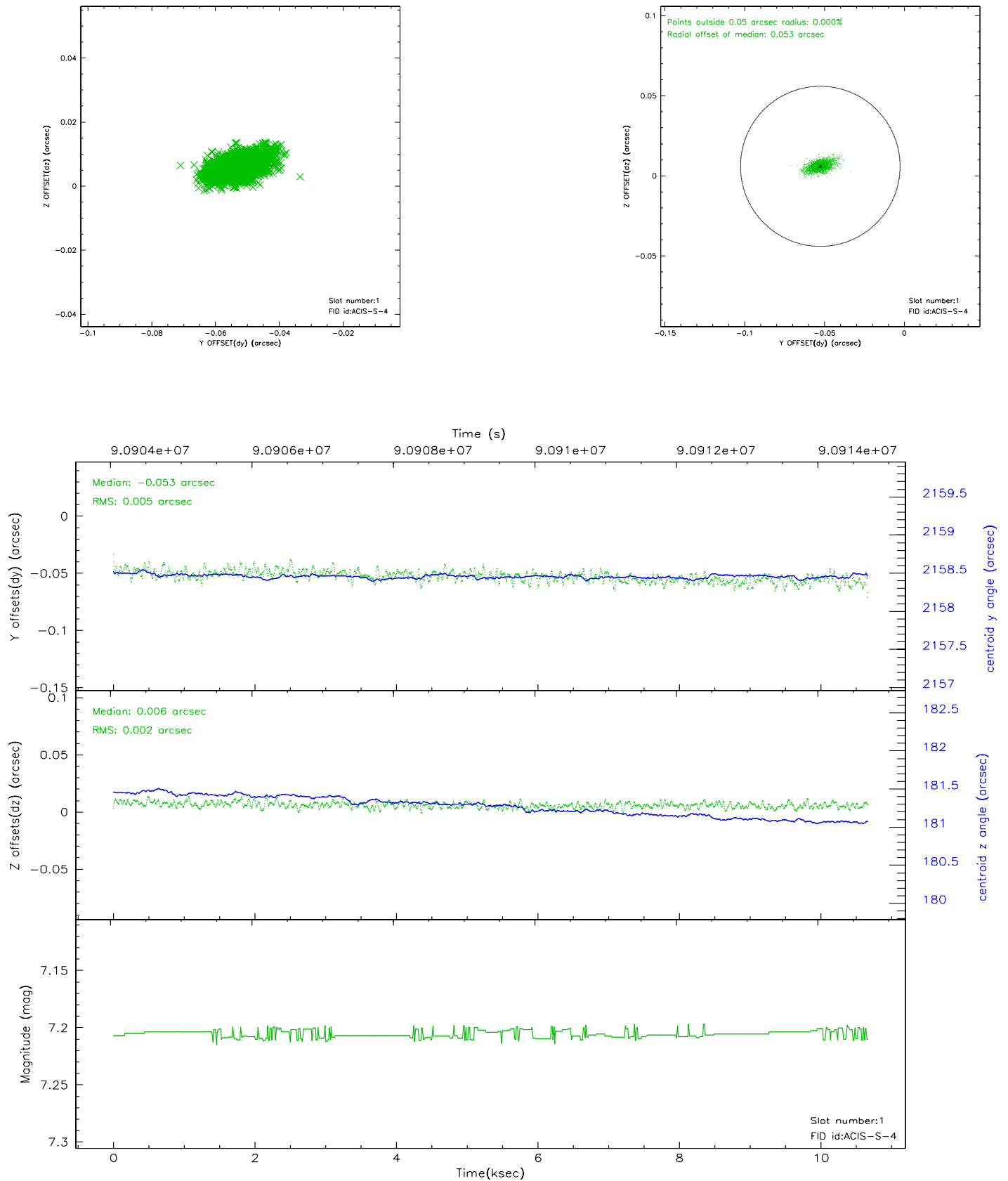


2.5 FID Slots

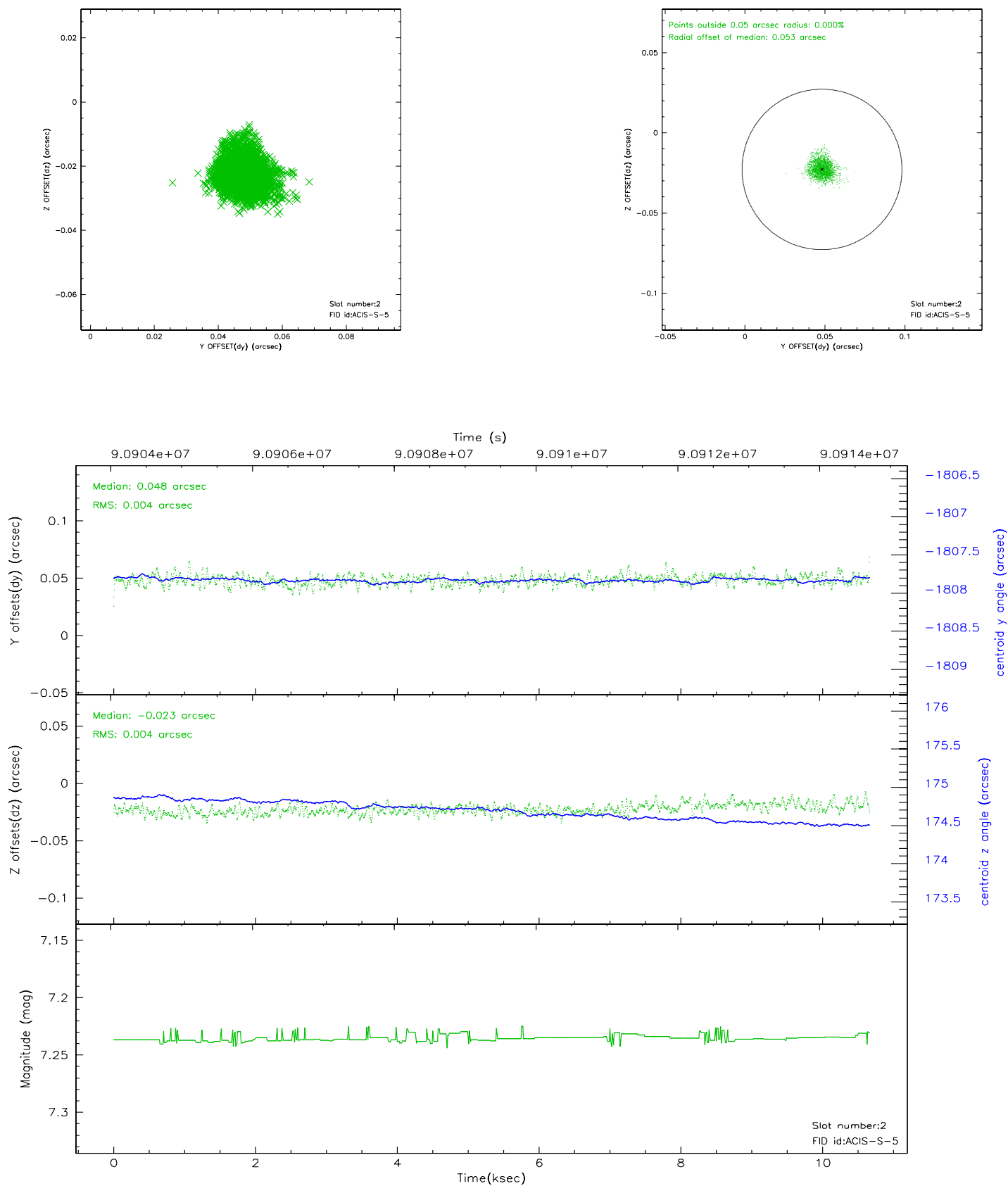
2.5.1 Slot 0



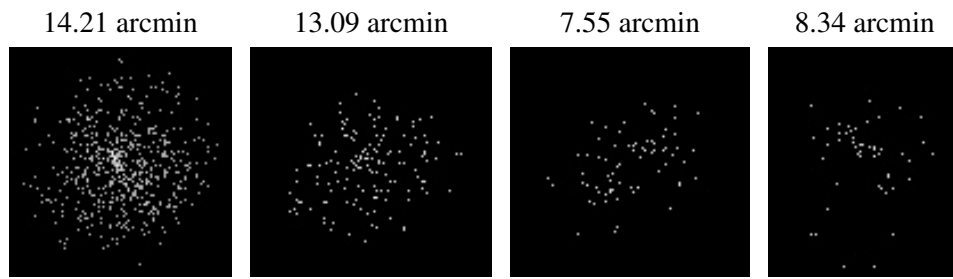
2.5.2 Slot 1



2.5.3 Slot 2



3 Point Sources



A Summary

A.1 Status

V&V Scientist	Beth Sundheim
V&V Date (YYYY-MM-DD)	2007.06.18
V&V Edition	1
V&V Disposition and Status	OK
V&V Charge Time	9.798

A.2 Comments