

V&V Reference Report

L2 ASCDS Version : 7.6.10

Observation 1637 - L2 Version 001
Chandra X-Ray Center

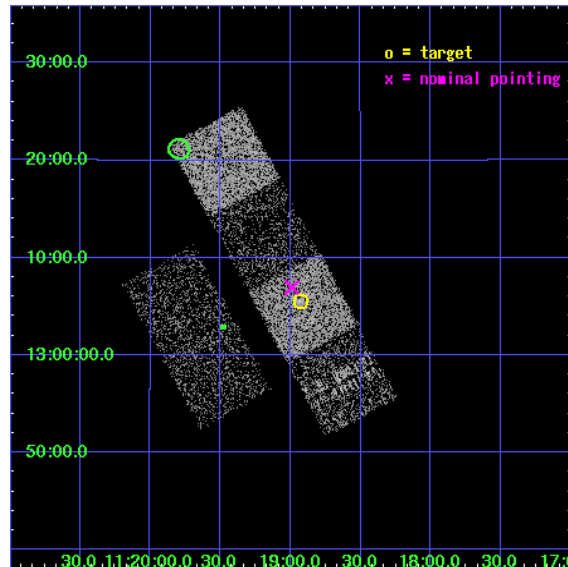
L2 Processing Date : Jun 14 2007

Contents

1	Front	2
2	OBI	3
2.1	OBI	3
2.1.1	Images	3
2.1.2	Bias	3
2.1.3	Parameters	4
2.1.4	Events	4
2.2	Compared Parameters	5
2.3	Aspect	6
2.4	Star Slots	9
2.4.1	Slot 3	9
2.4.2	Slot 4	10
2.4.3	Slot 5	11
2.4.4	Slot 6	12
2.4.5	Slot 7	13
2.5	FID Slots	14
2.5.1	Slot 0	14
2.5.2	Slot 1	15
2.5.3	Slot 2	16
3	Point Sources	17
A	Summary	18
A.1	Status	18
A.2	Comments	18

1 Front

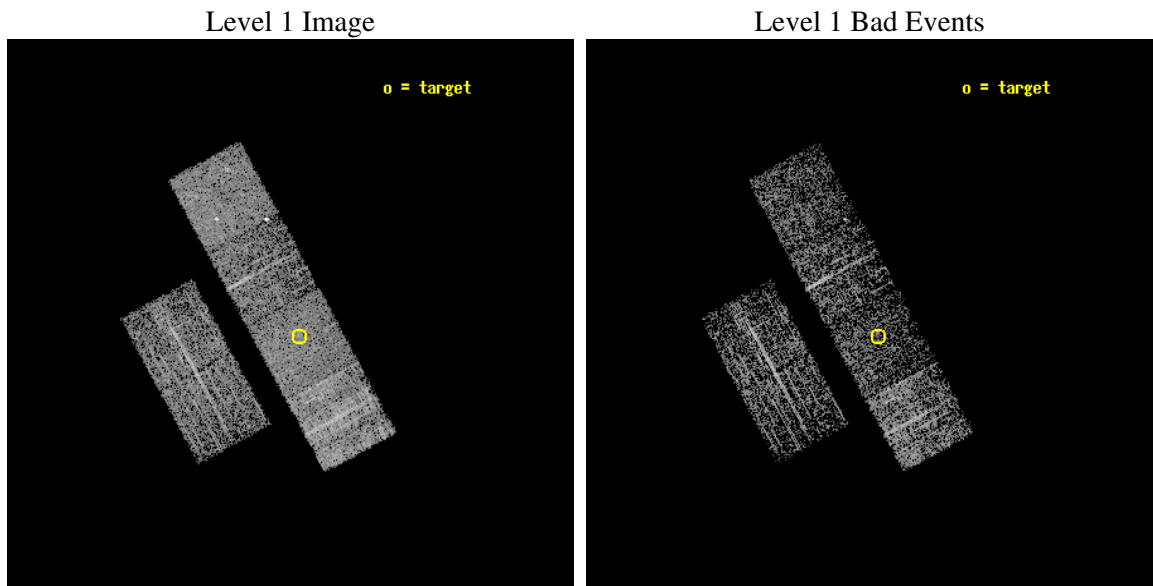
seq_num	700253
obs_id	1637
title	THE X-RAY PROPERTIES OF LOW-LUMINOSITY ACTIVE GALACTIC NUCLEI IN NEARBY GALAXIES
observer	Prof. Gordon Garmire
object	NGC 3623
dtcycle	0
cycle	P
ra_targ	169.731667
dec_targ	13.091361
ra_nom	169.74759842769
dec_nom	13.115925626007
roll_nom	61.435580763789
revision	2
ontime	1753.6000016332
livetime	1731.3948625213
ontime2	1753.6000016332
ontime3	1753.6000016332
ontime5	1753.6000016332
ontime6	1753.6000016332
ontime7	1753.6000016332
ontime8	1750.3591810018
l2events	18366



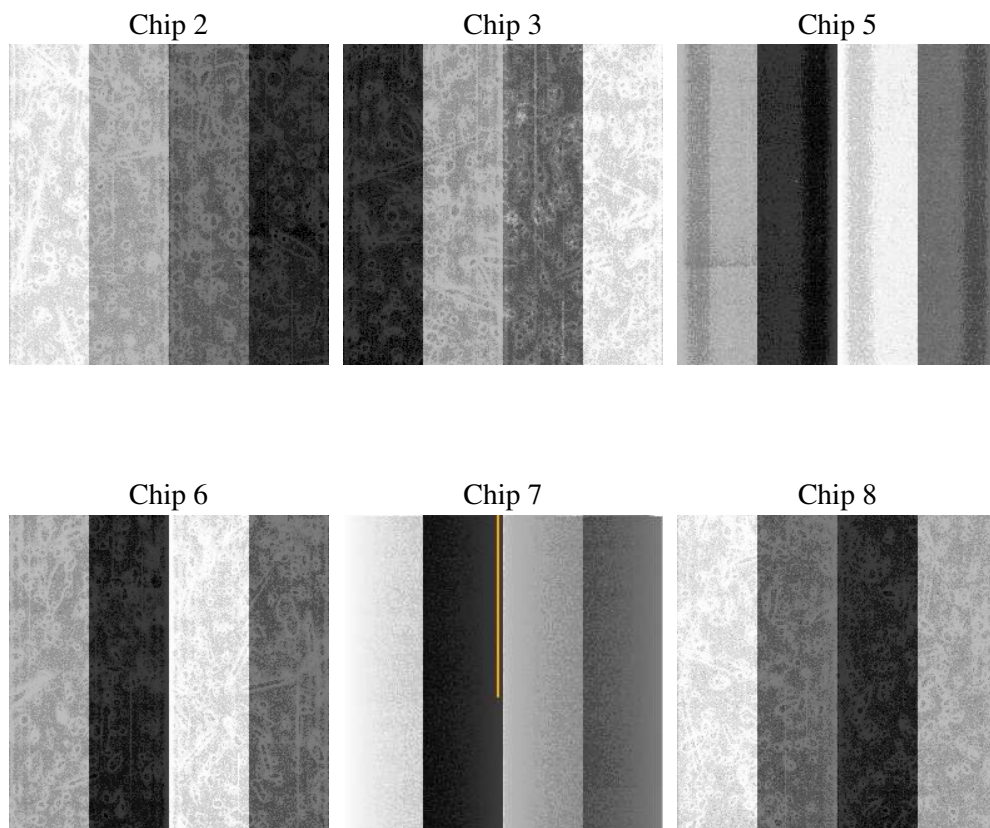
2 OBI

2.1 OBI

2.1.1 Images



2.1.2 Bias



2.1.3 Parameters

obi_num	0
ascdsver	7.6.10
caldsver	3.4.0
date	2007-06-14T10:31:44
revision	2

sched_exp_time	2000.000000
ontime	1753.6000016332
ontime2	1753.6000016332
ontime3	1753.6000016332
ontime5	1753.6000016332
ontime6	1753.6000016332
ontime7	1753.6000016332
ontime8	1750.3591810018
l1events	85202

2.1.4 Events

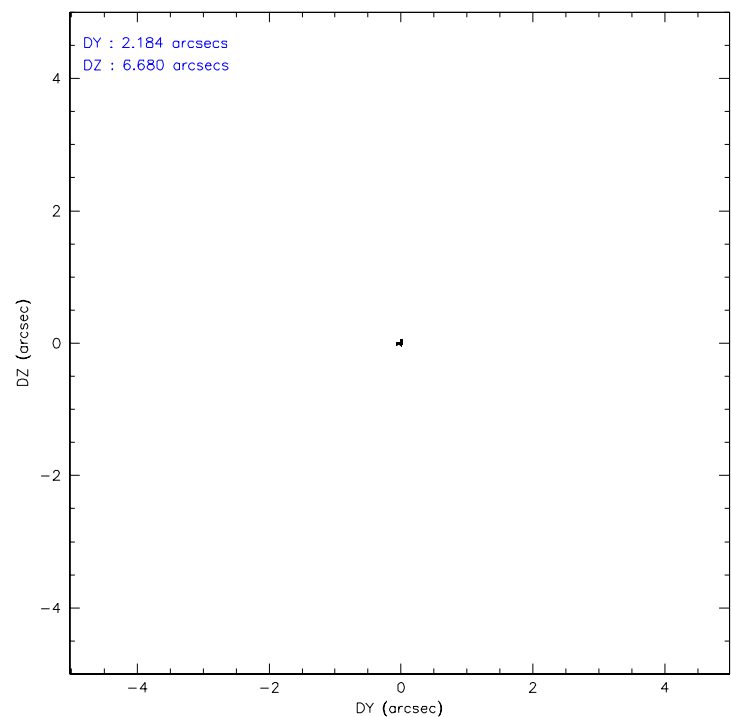
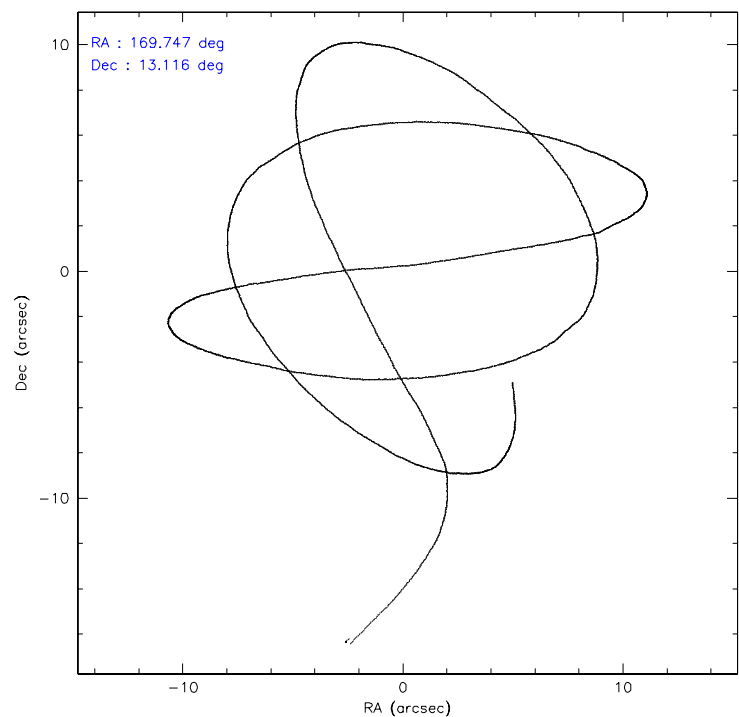
	ccd 2	ccd 3	ccd 5	ccd 6	ccd 7	ccd 8
level 1 events	12266	11014	15423	11491	13803	21205
rejected events	10728	9615	8207	9995	7793	14755
rejected %	87%	87%	53%	86%	56%	69%

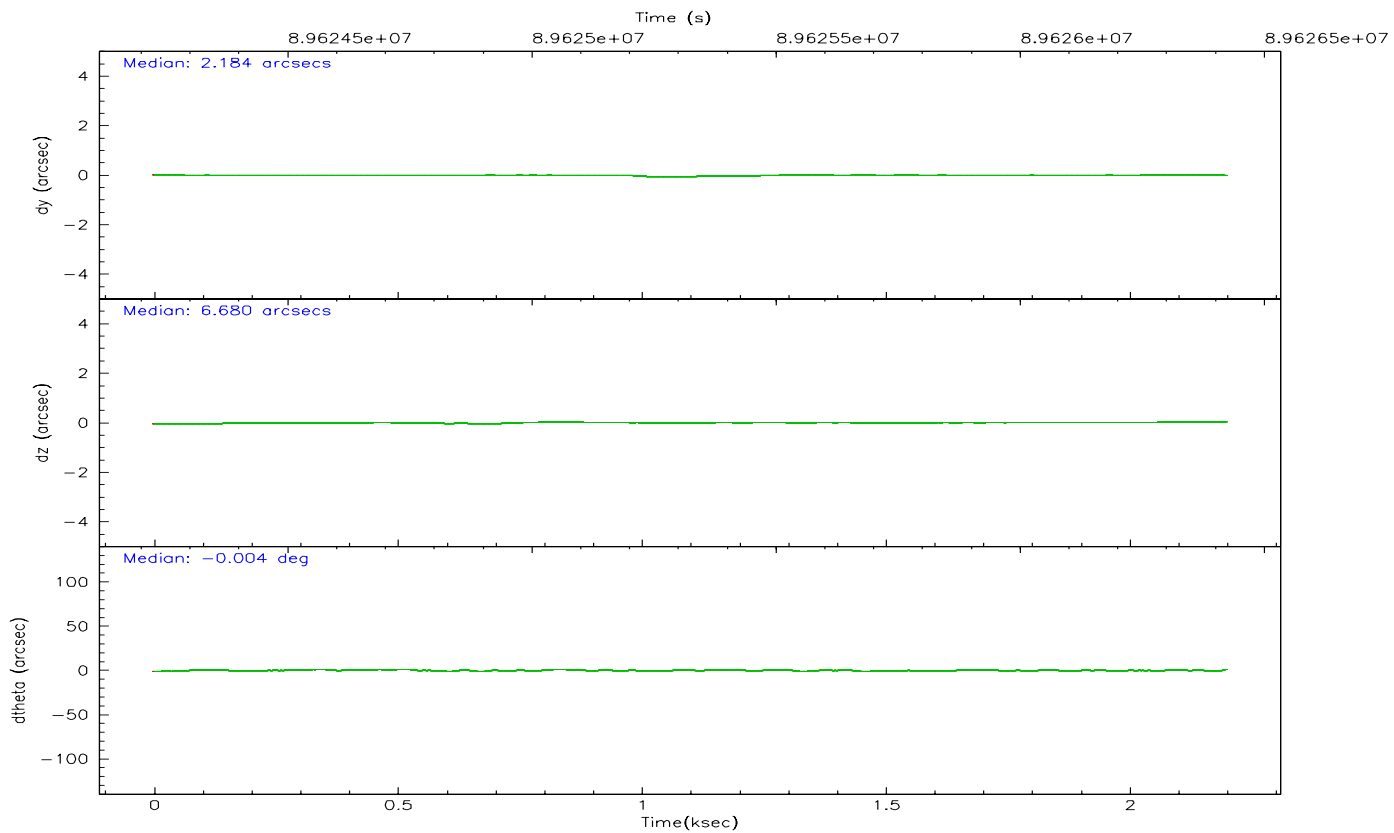
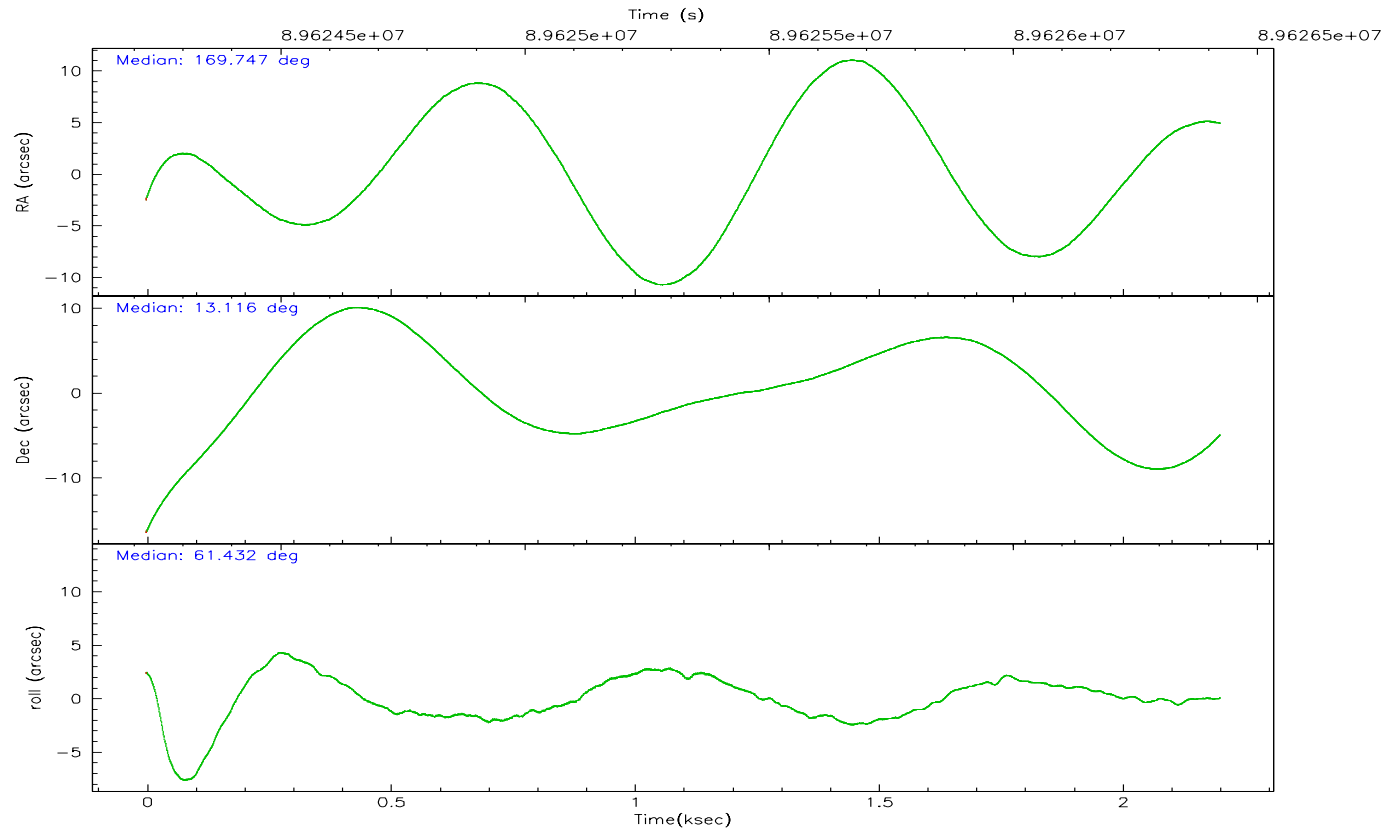
	ccd 2	ccd 3	ccd 5	ccd 6	ccd 7	ccd 8
grade 0 events	641	560	1108	620	680	2261
	5%	5%	7%	5%	4%	10%
grade 1 events	8	9	69	6	16	30
	0%	0%	0%	0%	0%	0%
grade 2 events	352	313	2036	344	1291	763
	2%	2%	13%	2%	9%	3%
grade 3 events	118	109	319	122	589	1213
	0%	0%	2%	1%	4%	5%
grade 4 events	130	117	365	133	530	1050
	1%	1%	2%	1%	3%	4%
grade 5 events	356	413	1126	441	1211	523
	2%	3%	7%	3%	8%	2%
grade 6 events	299	308	3418	281	2948	1180
	2%	2%	22%	2%	21%	5%
grade 7 events	10362	9185	6982	9544	6538	14185
	84%	83%	45%	83%	47%	66%

2.2 Compared Parameters

Parameter	Planned	Actual	Parameter	Planned	Actual
Instrument	ACIS	ACIS	Obspar format version number	6	6
Detector	ACIS-235678	ACIS-235678	Obspar file type	PREDICTED	ACTUAL
Grating	NONE	NONE	Obspar update status	NONE	UPDATED
Data mode	FAINT	FAINT	Number of optional ACIS chips dropped	0	0
Observation mode	POINTING	POINTING	On-chip summing requested	N	N
Pointing RA	169.748567	169.747598427687	Subarray requested	NONE	NONE
Pointing Dec	13.088799	13.11592562600719	Alternating exposures requested	N	N
Pointing Roll	61.278695	61.43558076378932	Primary exposure time	0.000000	3.2
SIM focus pos (mm)	-0.684267	-0.6828225247311905			
SIM defocus (mm)	0	0.001444936568705701			
SIM translation stage pos (mm)	-190.132523	-190.1400660498719			
SIM translation stage offset (mm)	0	0.00754346686406393			
Observation start time	89624423.184000	89623588.182777			
Observation start date	2000-11-03T07:39:19	2000-11-03T07:26:28			
Observation end time	89626423.184000	89626694.44539399			
Observation end date	2000-11-03T08:12:39	2000-11-03T08:18:14			
Read mode	TIMED	TIMED			

2.3 Aspect



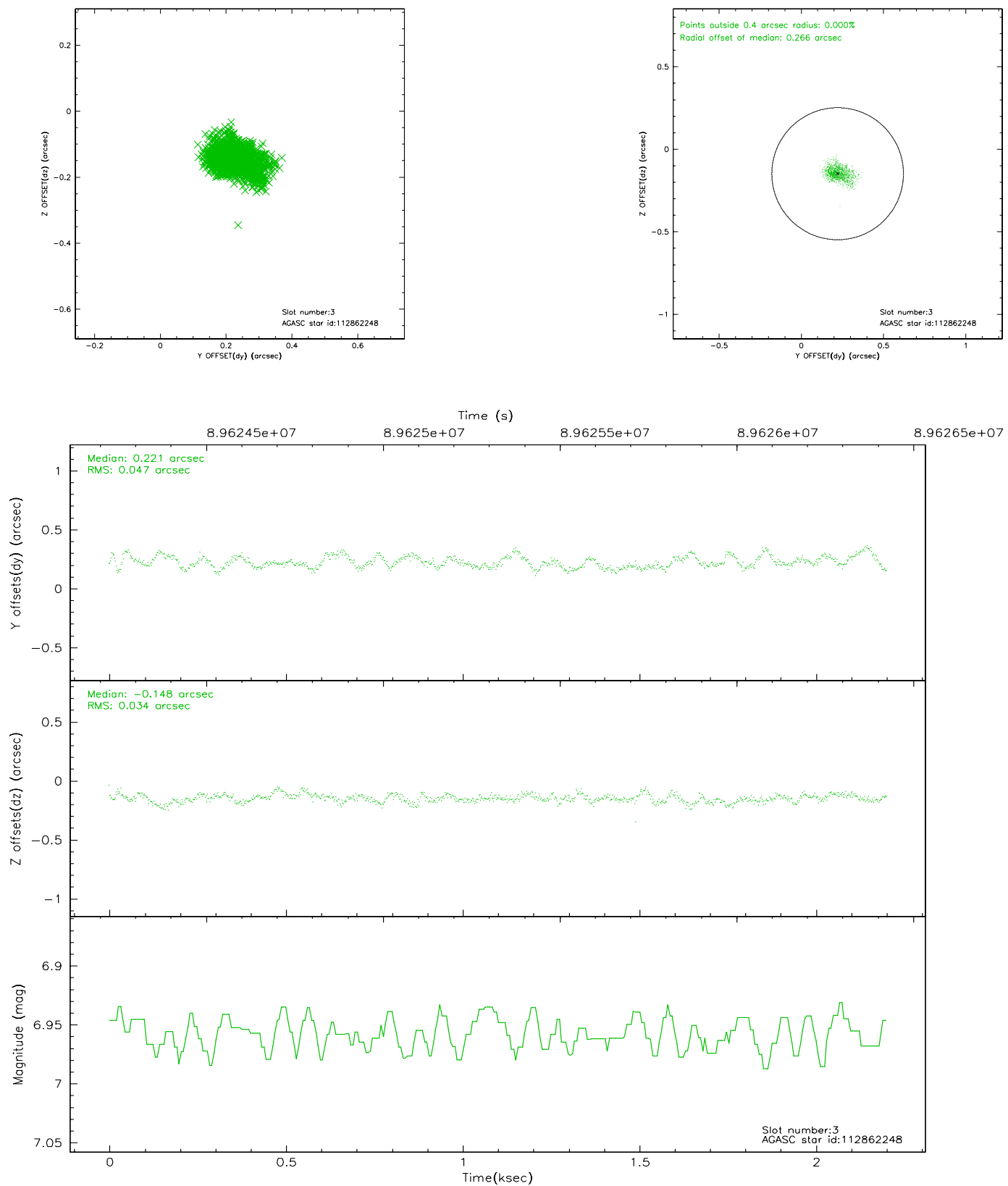


Slot Statistics

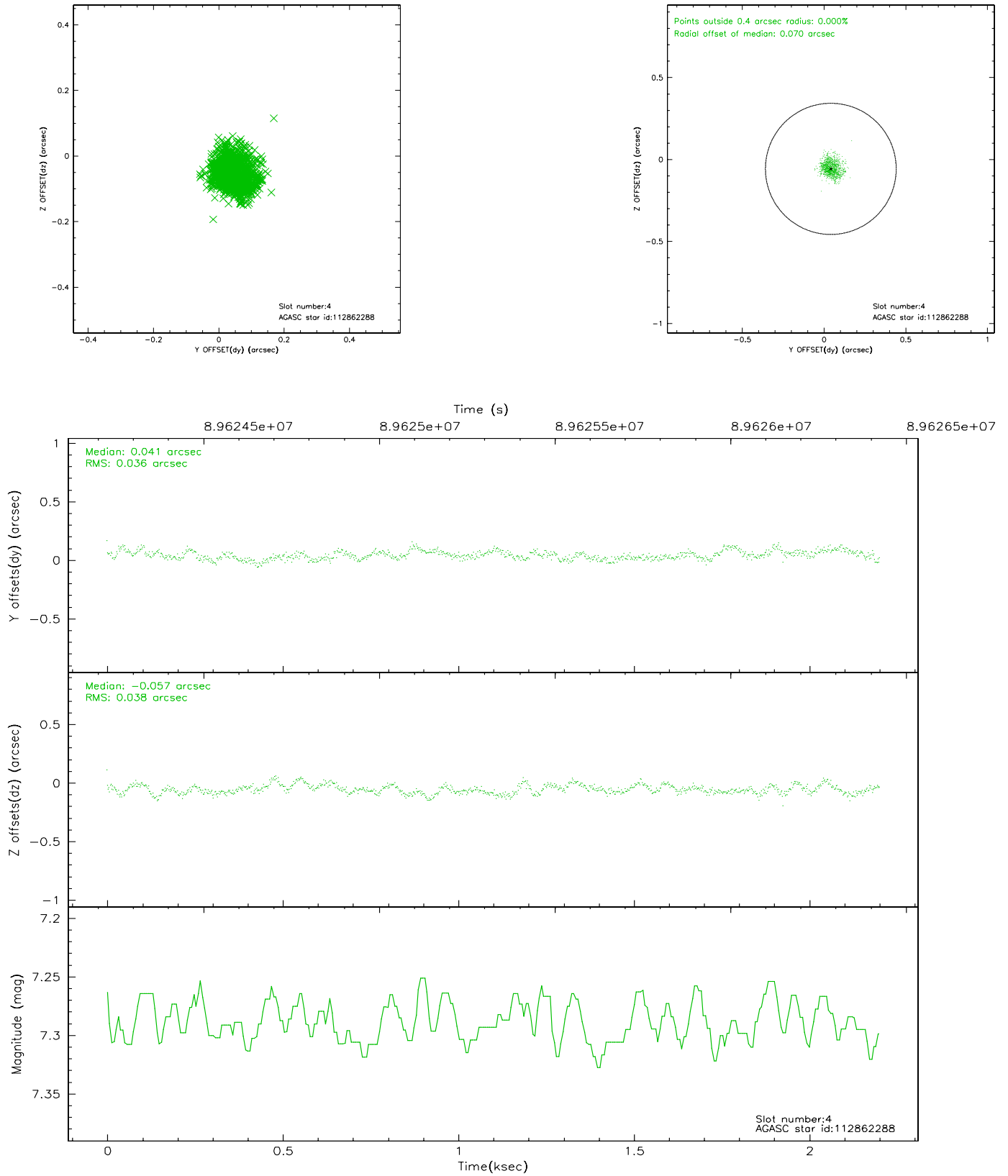
slot	status	id	mag	n_pts	med_dy	med_dz	dr1	dr2	ra	dec	mean_y	mean_z
0	FID	ACIS-S-2	7.11	538	-0.015	0.025	0.006	0.012	0.000000	0.000000	-754.81	-1727.81
1	FID	ACIS-S-4	7.20	538	-0.071	0.000	0.005	0.009	0.000000	0.000000	2157.08	177.60
2	FID	ACIS-S-5	7.24	538	0.055	-0.017	0.006	0.010	0.000000	0.000000	-1803.78	174.61
3	GUIDE	112862248	6.96	1075	0.221	-0.148	0.061	0.104	168.990845	12.844801	-2043.19	1911.79
4	GUIDE	112862288	7.29	1075	0.041	-0.057	0.056	0.091	169.777560	13.390753	1001.91	434.99
5	GUIDE	112862424	9.44	1075	-0.239	0.190	0.108	0.178	170.459633	13.475243	2421.93	-1512.34
6	GUIDE	112857720	9.40	1075	-0.119	-0.031	0.087	0.141	169.841312	13.775016	2326.11	901.38
7	GUIDE	112862568	9.60	1074	0.086	0.051	0.086	0.143	170.030630	13.021719	268.13	-982.61

2.4 Star Slots

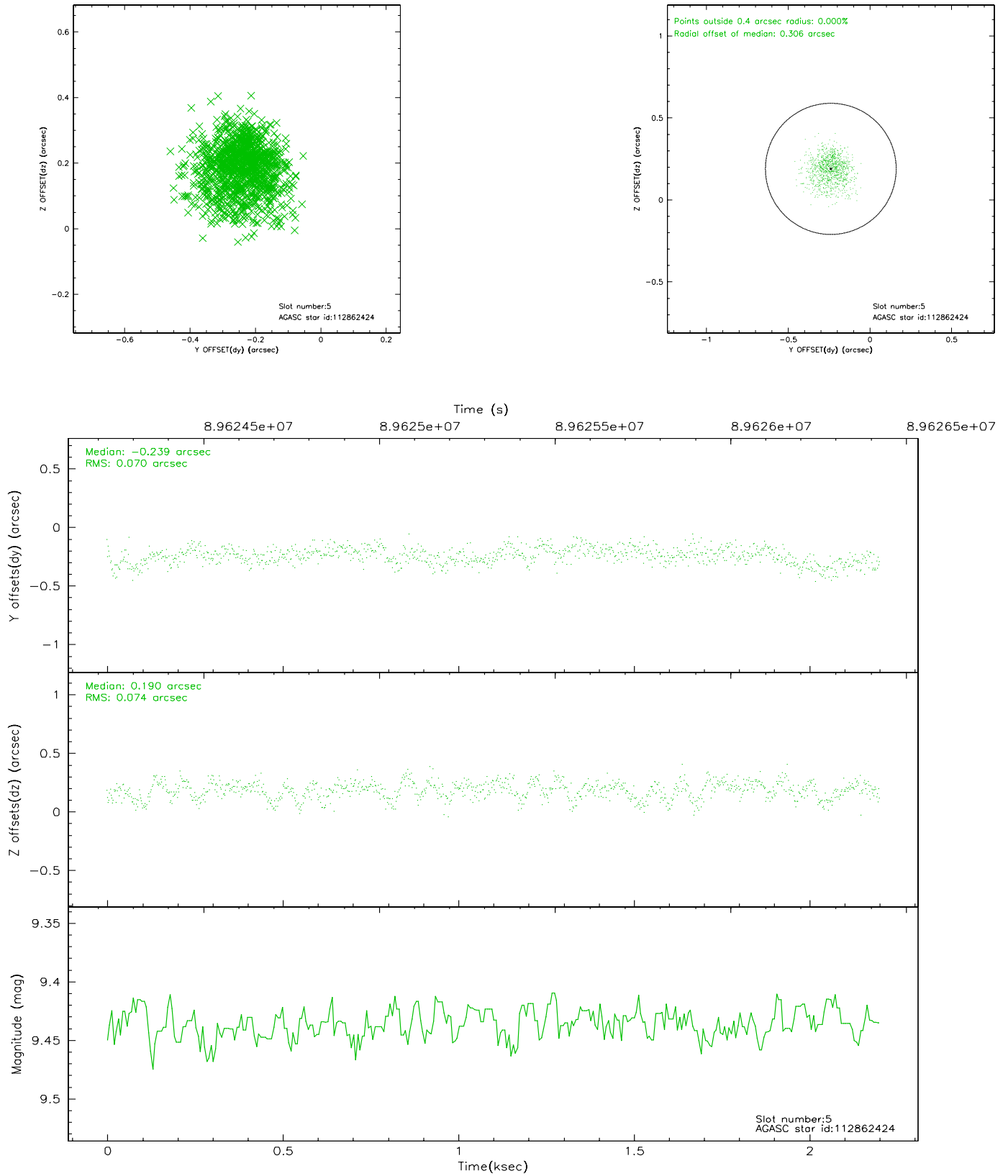
2.4.1 Slot 3



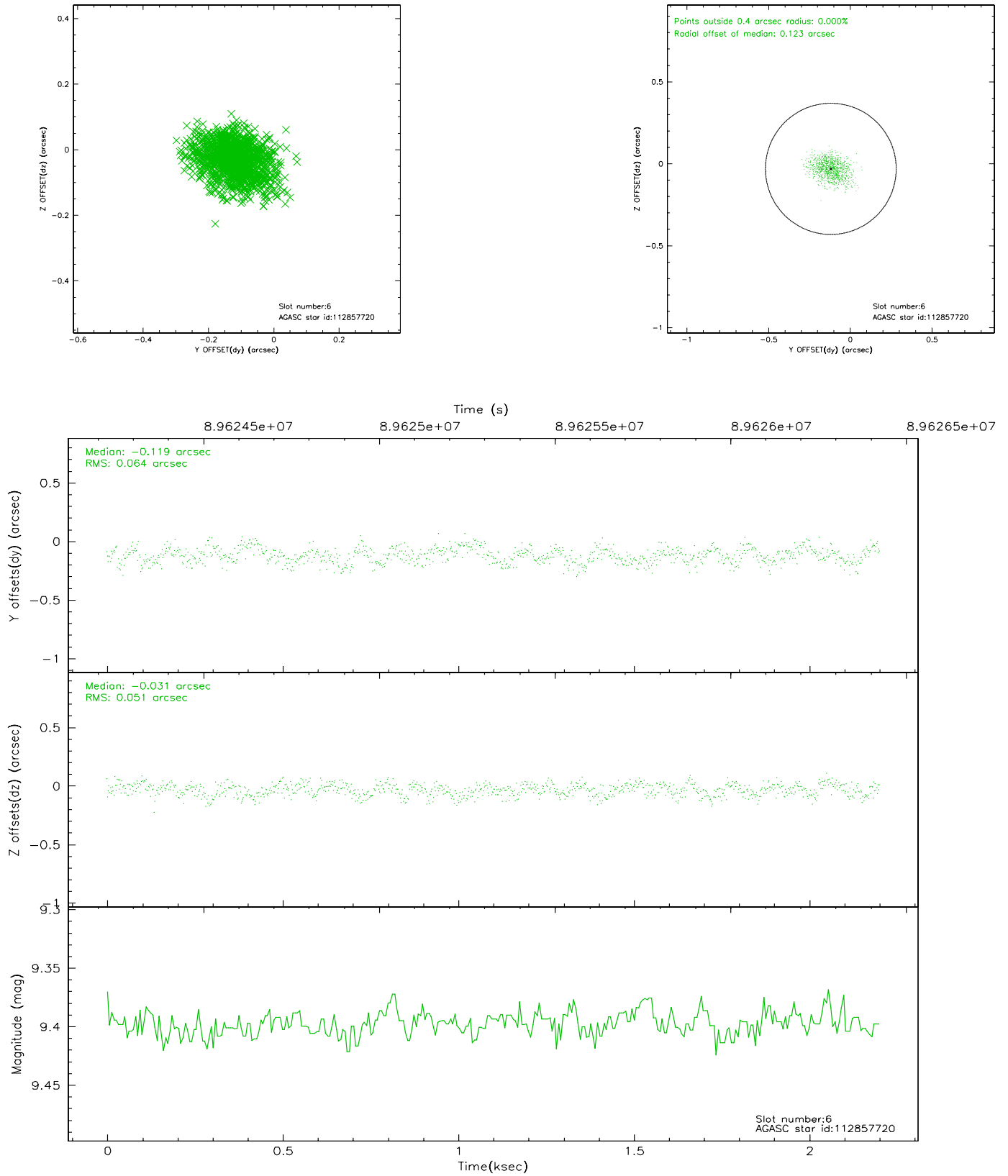
2.4.2 Slot 4



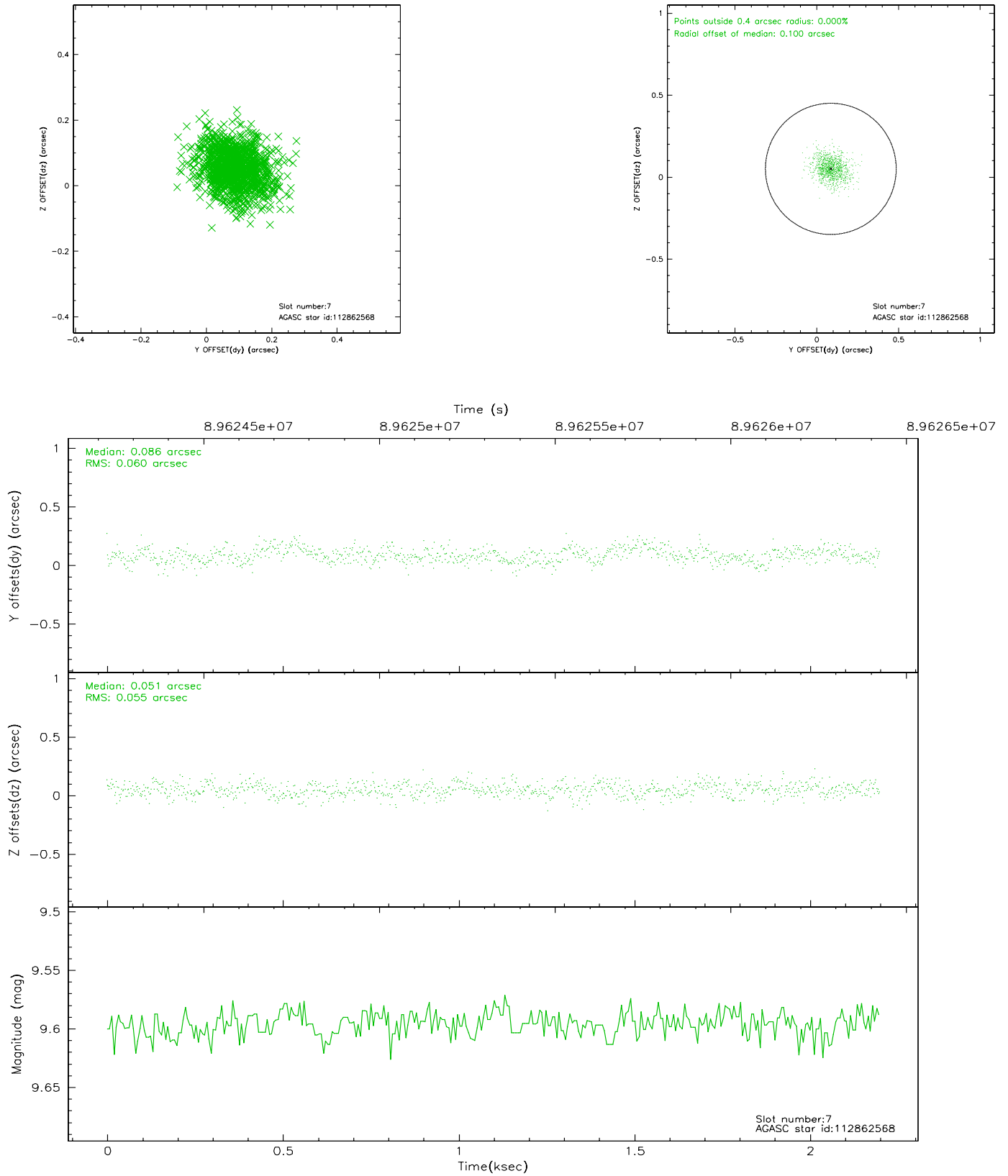
2.4.3 Slot 5



2.4.4 Slot 6

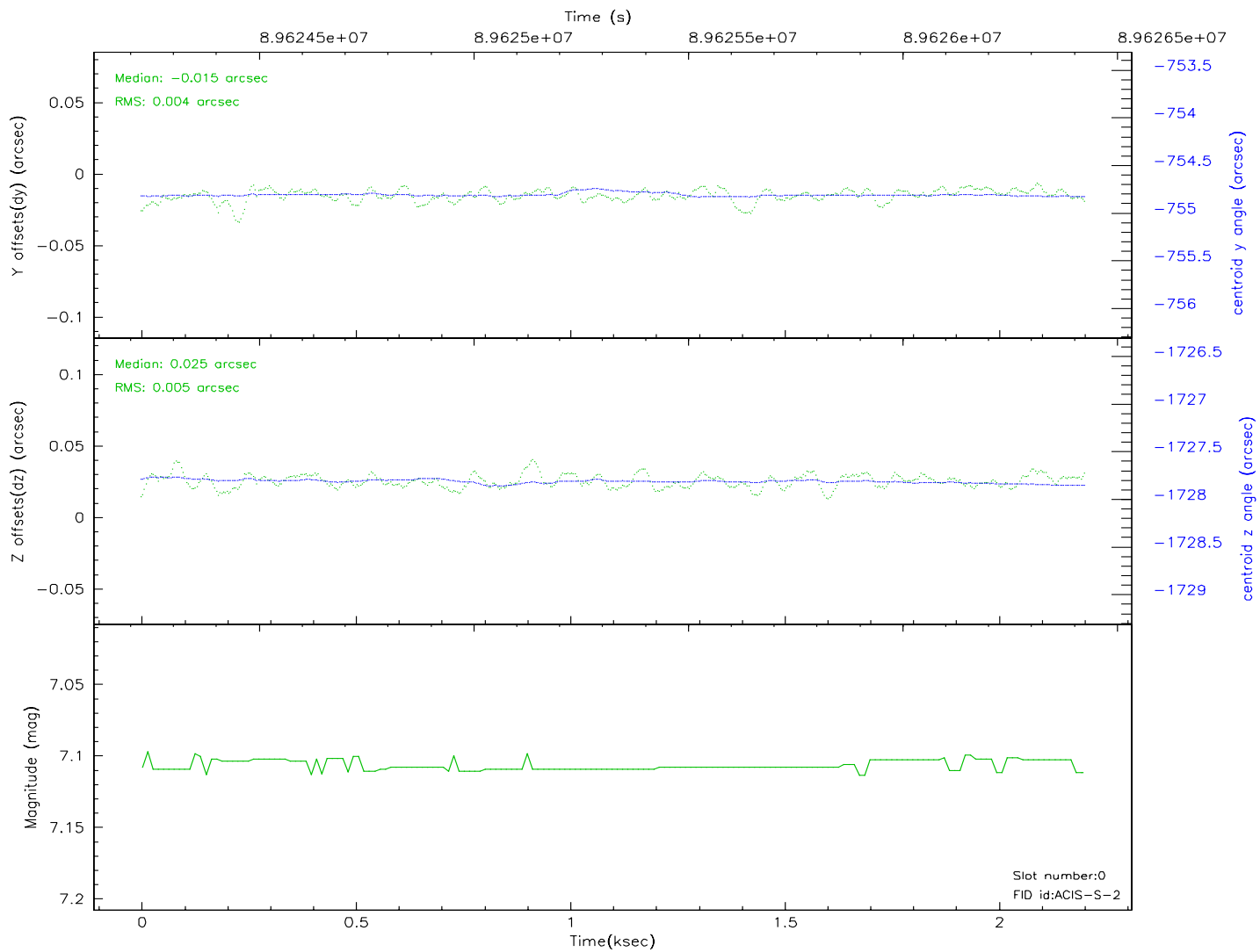
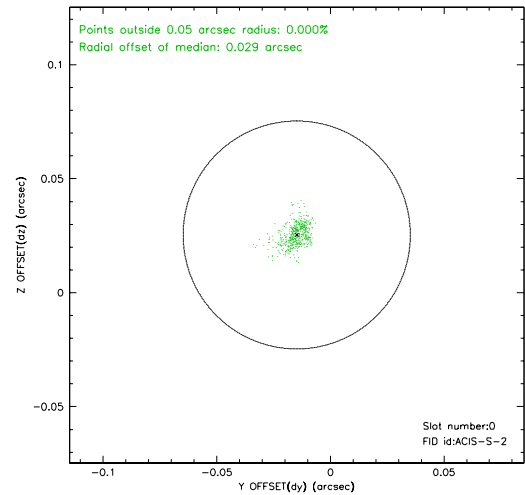
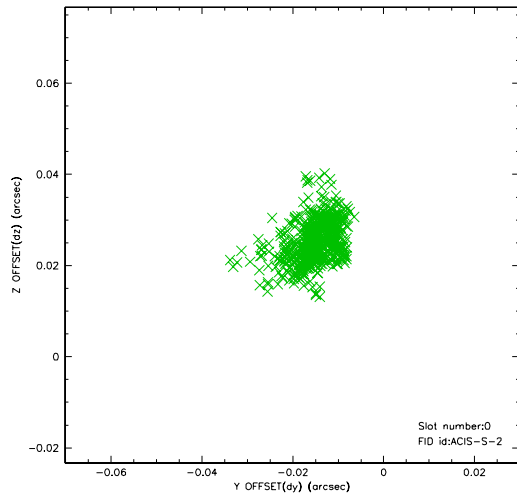


2.4.5 Slot 7

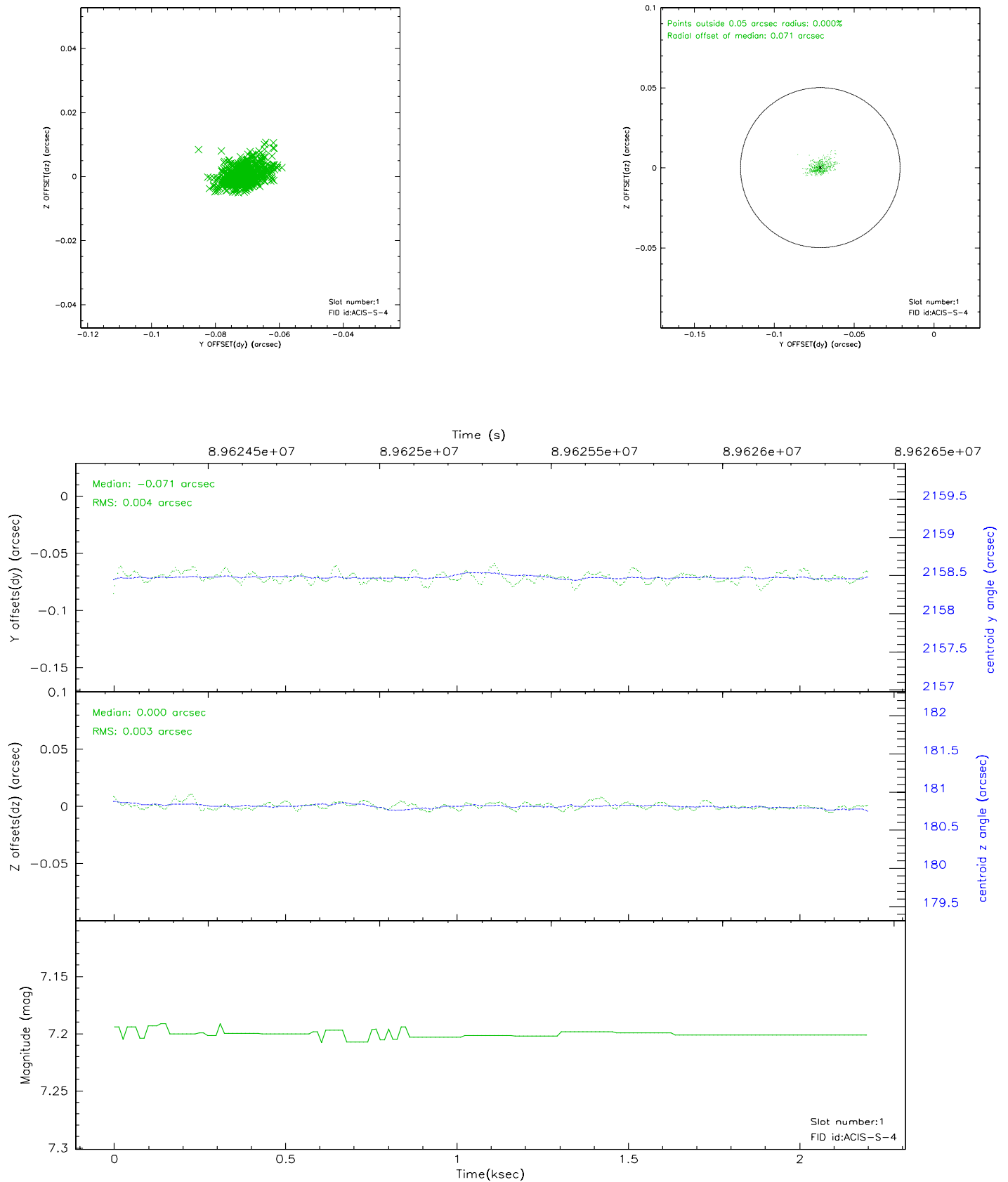


2.5 FID Slots

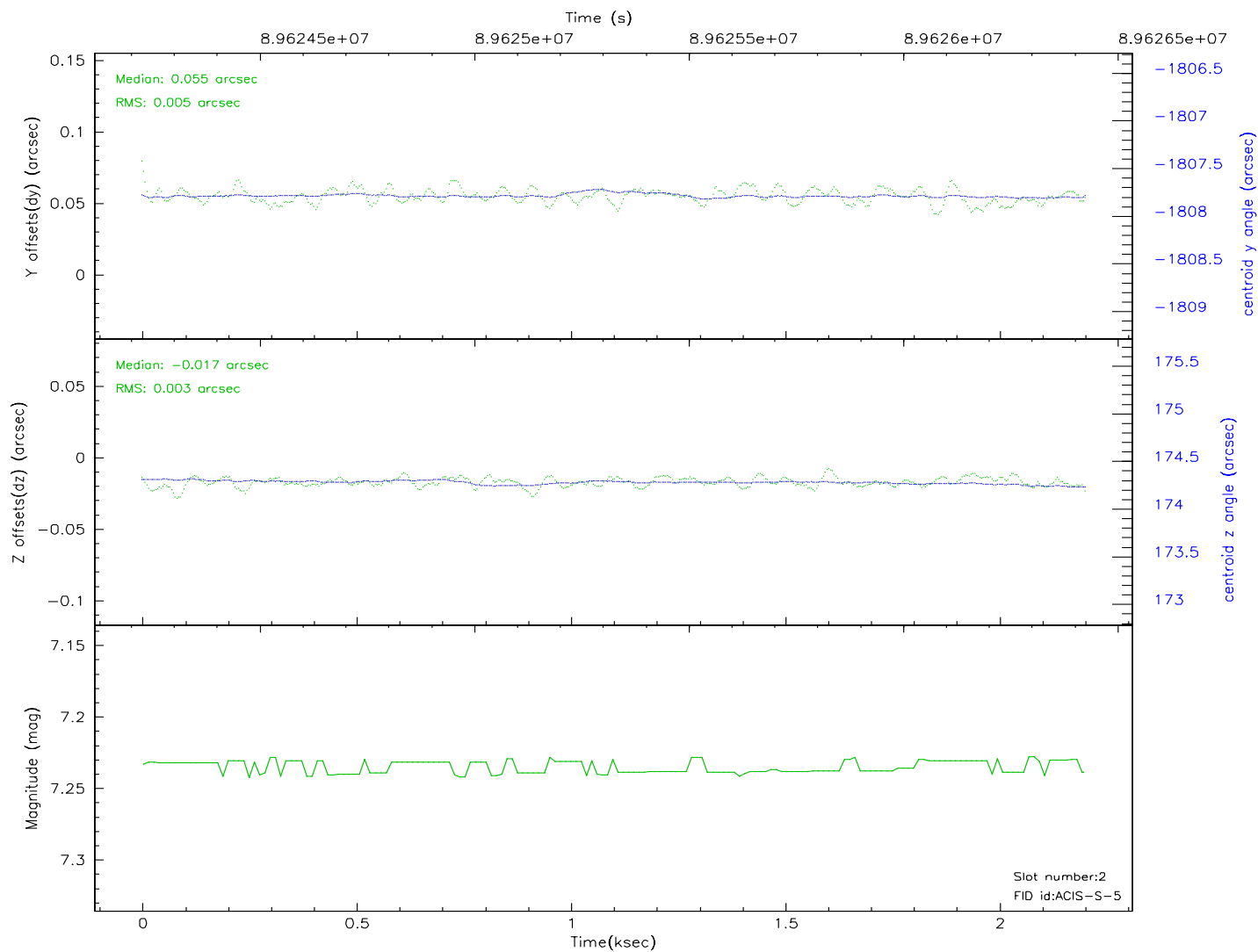
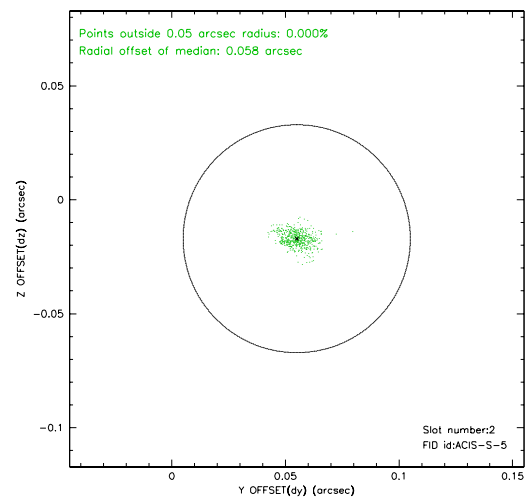
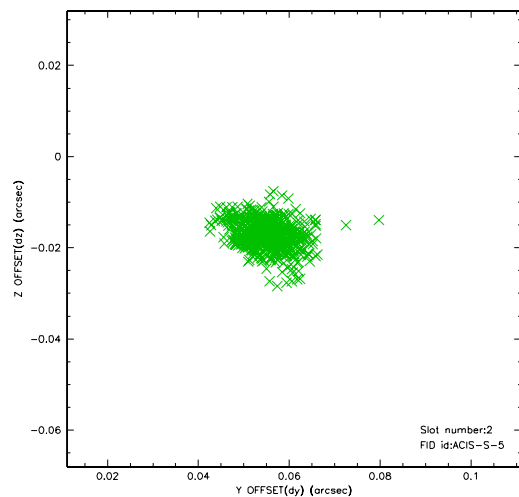
2.5.1 Slot 0



2.5.2 Slot 1



2.5.3 Slot 2



3 Point Sources

8.17 arcmin



A Summary

A.1 Status

V&V Scientist	Beth Sundheim
V&V Date (YYYY-MM-DD)	2007.06.14
V&V Edition	1
V&V Disposition and Status	OK
V&V Charge Time	1.756

A.2 Comments