

V&V Reference Report

L2 ASCDS Version : 8.4.5

Observation 1629 - L2 Version 3
Chandra X-Ray Center

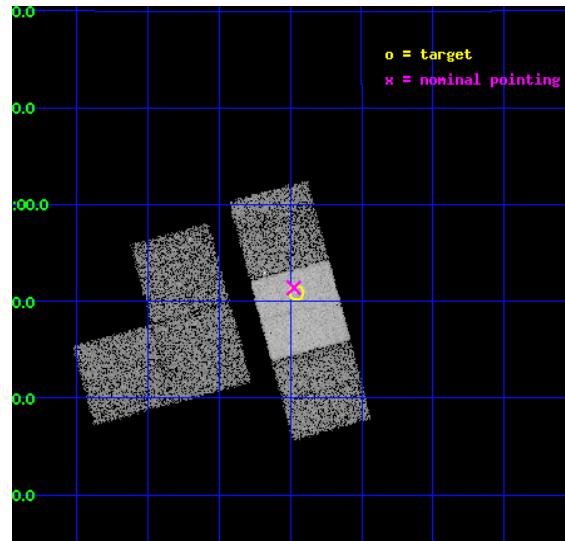
L2 Processing Date : Sep 2 2012

Contents

1	Front	2
2	OBI	3
2.1	OBI	3
2.1.1	Images	3
2.1.2	Bias	3
2.1.3	Parameters	4
2.1.4	Events	4
2.2	Compared Parameters	5
2.3	Aspect	6
2.4	Star Slots	9
2.4.1	Slot 3	9
2.4.2	Slot 4	10
2.4.3	Slot 5	11
2.4.4	Slot 6	12
2.4.5	Slot 7	13
2.5	FID Slots	14
2.5.1	Slot 0	14
2.5.2	Slot 1	15
2.5.3	Slot 2	16
A	Summary	17
A.1	Status	17
A.2	Comments	17

1 Front

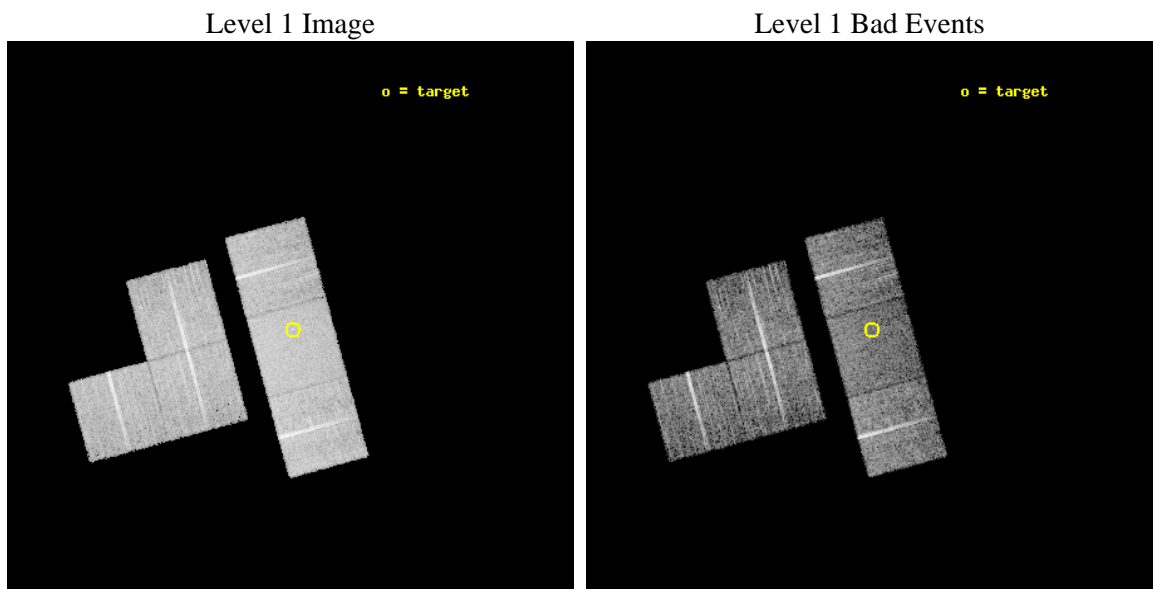
seq_num	700245	Sequence number
obs_id	1629	Observation id
title	FOLLOW - UP ON CHANDRA SURVEY OF GRAVITATIONAL LENSES FOR TIME-DELAY MEASUREMENTS	Proposal title
observer	Professor Gordon Garmire	Principal investigator
object	RXJ0911.4+0551	Source name
dtcycle	0	
cycle	P	events from which exps? Prim/Second/Both
ra_targ	137.864583	Observer's specified target RA [deg]
dec_targ	5.847778	Observer's specified target Dec [deg]
ra_nom	137.86884565579	Nominal RA [deg]
dec_nom	5.8566655645559	Nominal Dec [deg]
roll_nom	74.764583344423	Nominal Roll [deg]
revision	3	Processing version of data
ontime	9951.5084917545	Sum of GTIs [s]
livetime	9825.4964991529	Livetime [s]
ontime1	9951.5495317578	Sum of GTIs [s]
ontime2	9948.1033715308	Sum of GTIs [s]
ontime3	9951.4264117628	Sum of GTIs [s]
ontime6	9951.4674517512	Sum of GTIs [s]
ontime7	9951.5084917545	Sum of GTIs [s]
ontime8	9951.3853717595	Sum of GTIs [s]
l2events	60756	Number of level 2 events



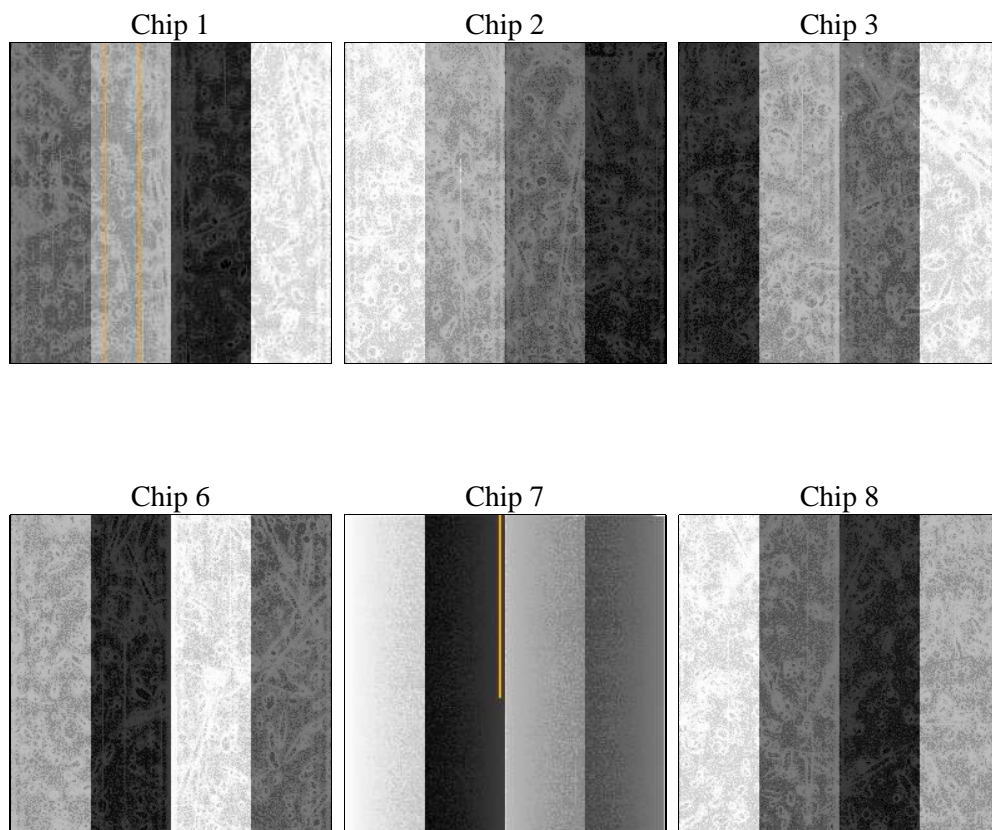
2 OBI

2.1 OBI

2.1.1 Images



2.1.2 Bias



2.1.3 Parameters

obi_num	0	Obi number	sched_exp_time	10000.000000	[s] Scheduled observation exposure time
ascdsver	8.4.5	Processing system revision	ontime	9951.5084917545	Sum of GTIs [s]
caldsver	4.5.1.1	 	ontime1	9951.5495317578	Sum of GTIs [s]
date	2012-09-03T00:33:07	Date and time of file creation	ontime2	9948.1033715308	Sum of GTIs [s]
revision	3	Processing version of data	ontime3	9951.4264117628	Sum of GTIs [s]
			ontime6	9951.4674517512	Sum of GTIs [s]
			ontime7	9951.5084917545	Sum of GTIs [s]
			ontime8	9951.3853717595	Sum of GTIs [s]
			l1events	381978	Number of level 1 events

2.1.4 Events

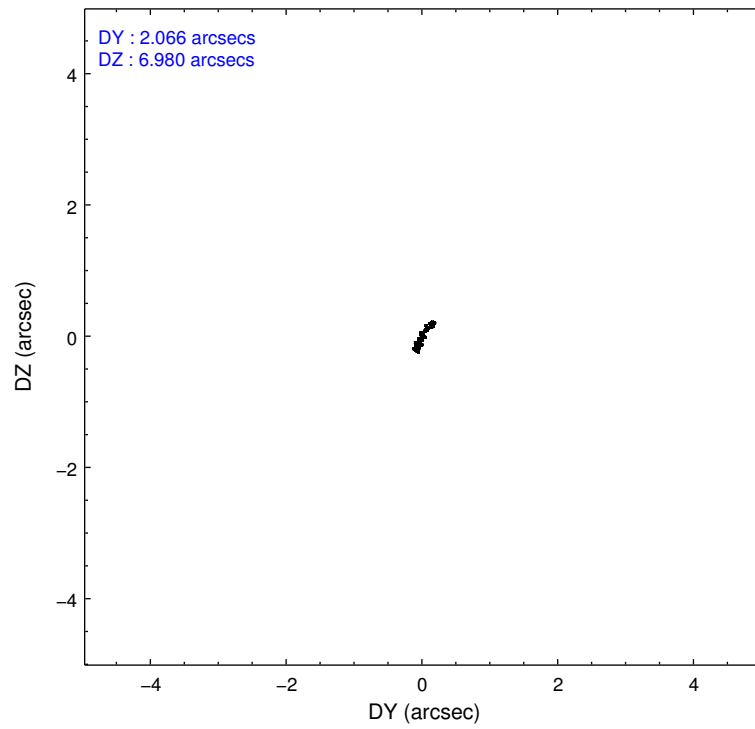
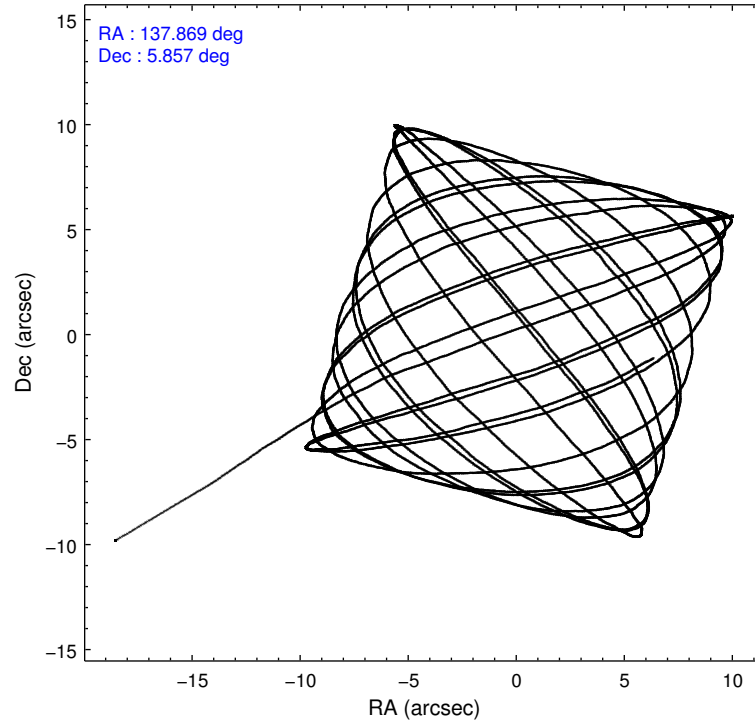
	ccd 1	ccd 2	ccd 3	ccd 6	ccd 7	ccd 8		ccd 1	ccd 2	ccd 3	ccd 6	ccd 7	ccd 8
level 1 events	56479	59540	58299	60180	73001	74479	grade 0 events	2969	3042	2841	3016	3199	5173
rejected events	49305	52829	51681	52999	42150	58998		5%	5%	4%	5%	4%	6%
rejected %	87%	88%	88%	88%	57%	79%	grade 1 events	38	27	18	27	61	42
								0%	0%	0%	0%	0%	0%
							grade 2 events	1425	1357	1310	1460	6127	3283
								2%	2%	2%	2%	8%	4%
							grade 3 events	739	570	633	690	2762	1732
								1%	0%	1%	1%	3%	2%
							grade 4 events	731	604	629	662	2855	1692
								1%	1%	1%	1%	3%	2%
							grade 5 events	2238	1902	2171	2447	7002	3049
								3%	3%	3%	4%	9%	4%
							grade 6 events	1310	1143	1207	1355	15923	3602
								2%	1%	2%	2%	21%	4%
							grade 7 events	47029	50895	49490	50523	35072	55906
								83%	85%	84%	83%	48%	75%

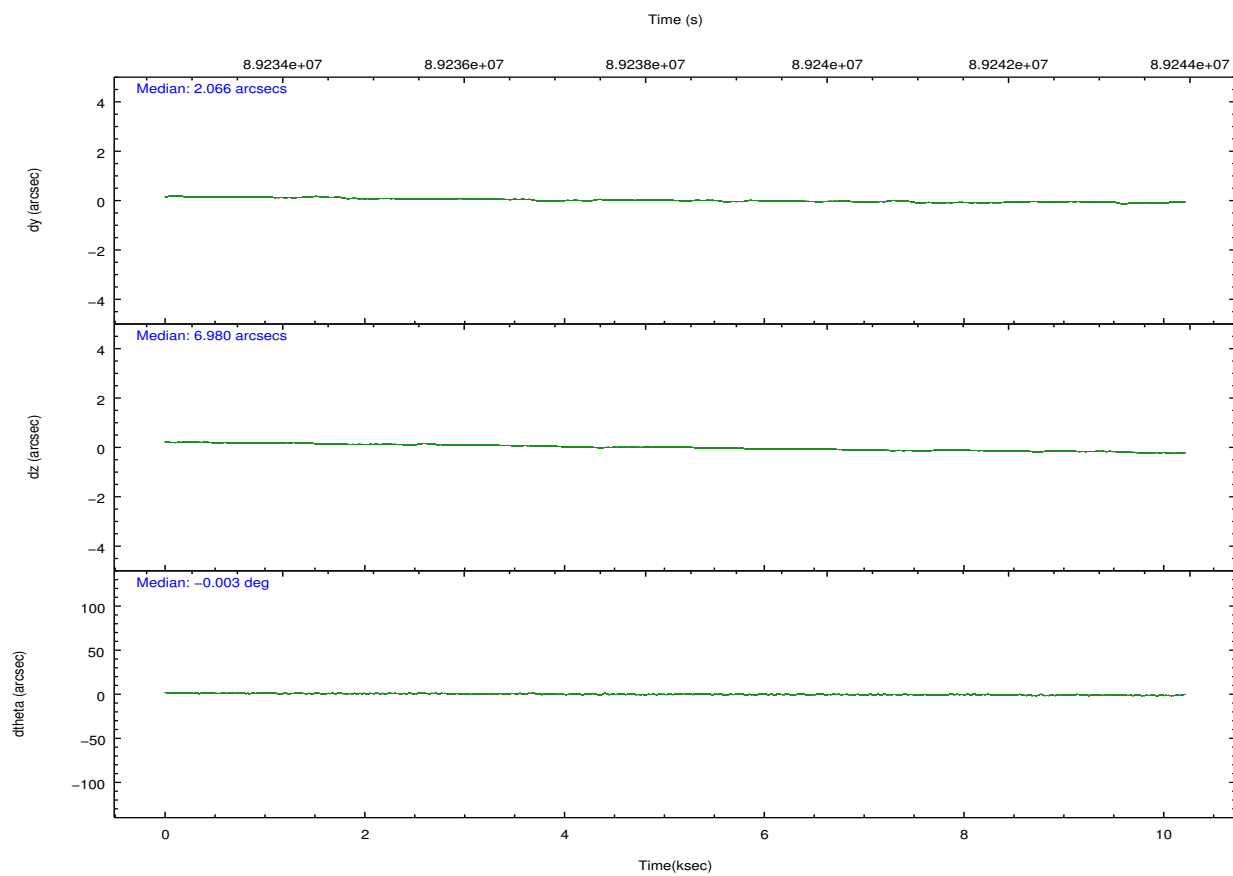
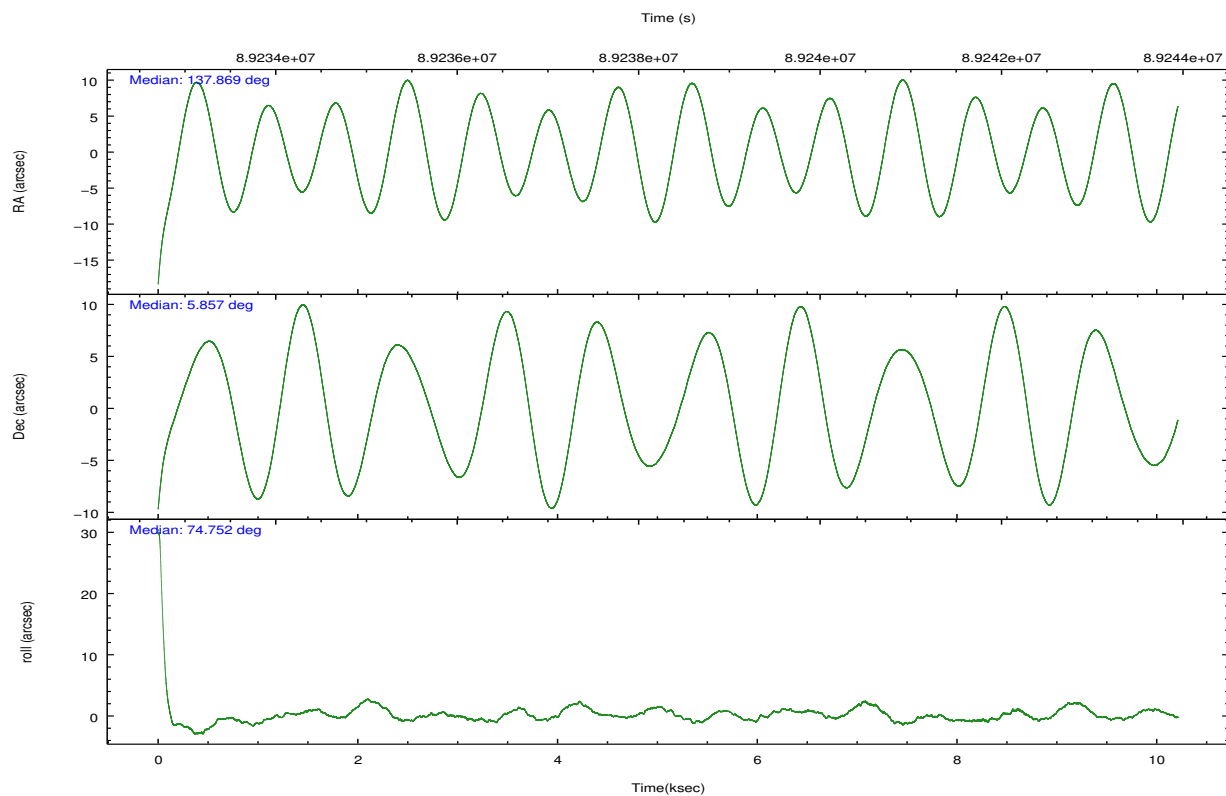
2.2 Compared Parameters

Parameter	Planned	Actual
Instrument	ACIS	ACIS
Detector	ACIS-123678	ACIS-123678
Grating	NONE	NONE
Data mode	FAINT	FAINT
Observation mode	POINTING	POINTING
[deg] Pointing RA	137.876071	137.868845655791
[deg] Pointing Dec	5.830285	5.85666556455587
[deg] Pointing Roll	74.607184	74.76458334442322
[mm] SIM focus pos	-0.684267	-0.6828225247311905
[mm] SIM defocus	0	0.001444936568705701
[mm] SIM translation stage pos	-190.132523	-190.1400660498719
[mm] SIM translation stage offset	0	0.00754346686406393
[s] Observation start time (MET)	89233428.184000	89232442.01800799
Observation start date	2000-10-29T19:02:44	2000-10-29T18:47:22
[s] Observation end time (MET)	89243428.184000	89244072.69344699
Observation end date	2000-10-29T21:49:24	2000-10-29T22:01:12
Read mode	TIMED	TIMED

Parameter	Planned	Actual
Obspar format version number	7	7
Obspar file type	PREDICTED	ACTUAL
Obspar update status	NONE	UPDATED
Number of optional ACIS chips dropped	0	0
On-chip summing requested	N	N
Subarray requested	NONE	NONE
Alternating exposures requested	N	N
[s] Primary exposure time	0.000000	3.2

2.3 Aspect



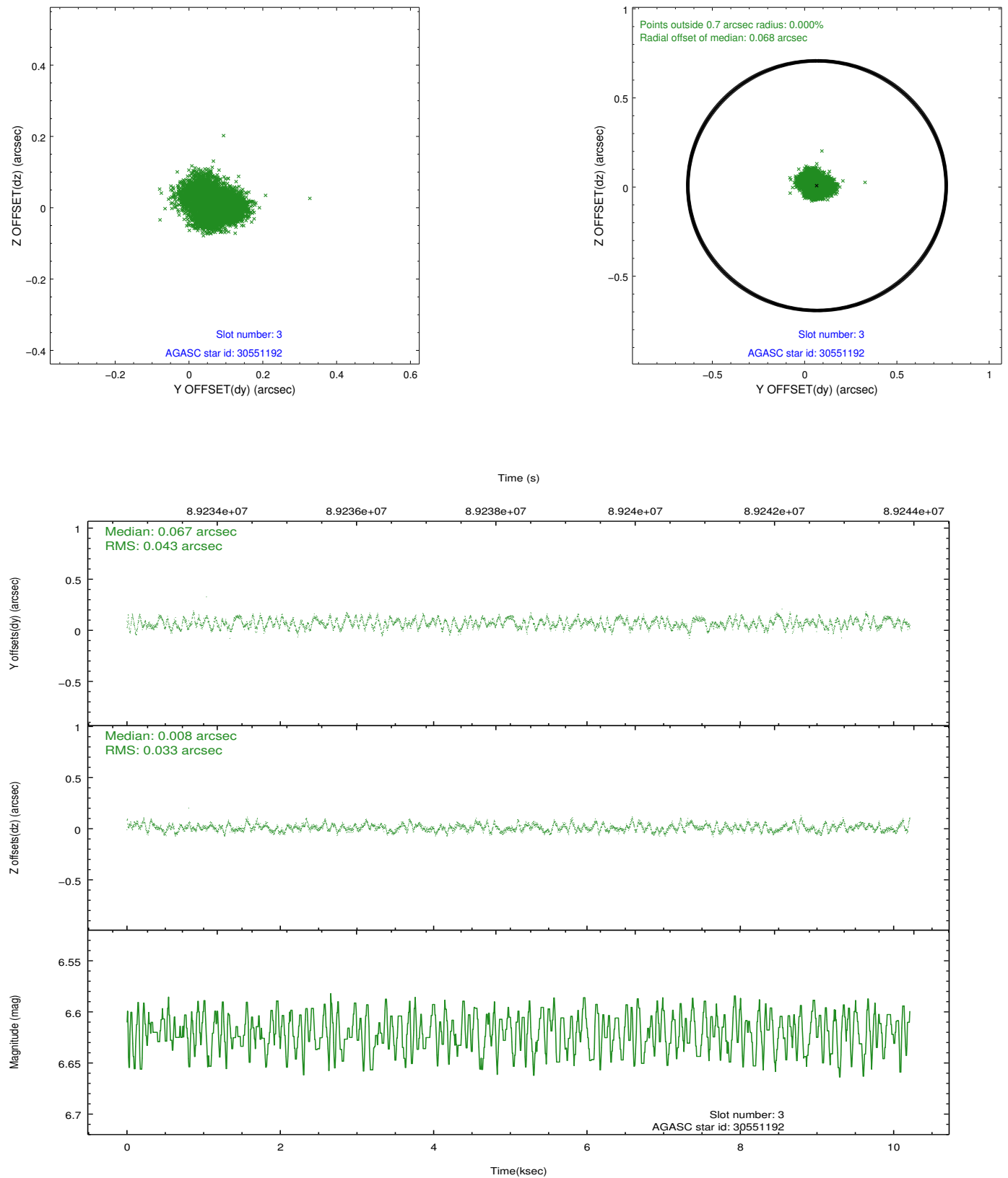


Slot Statistics

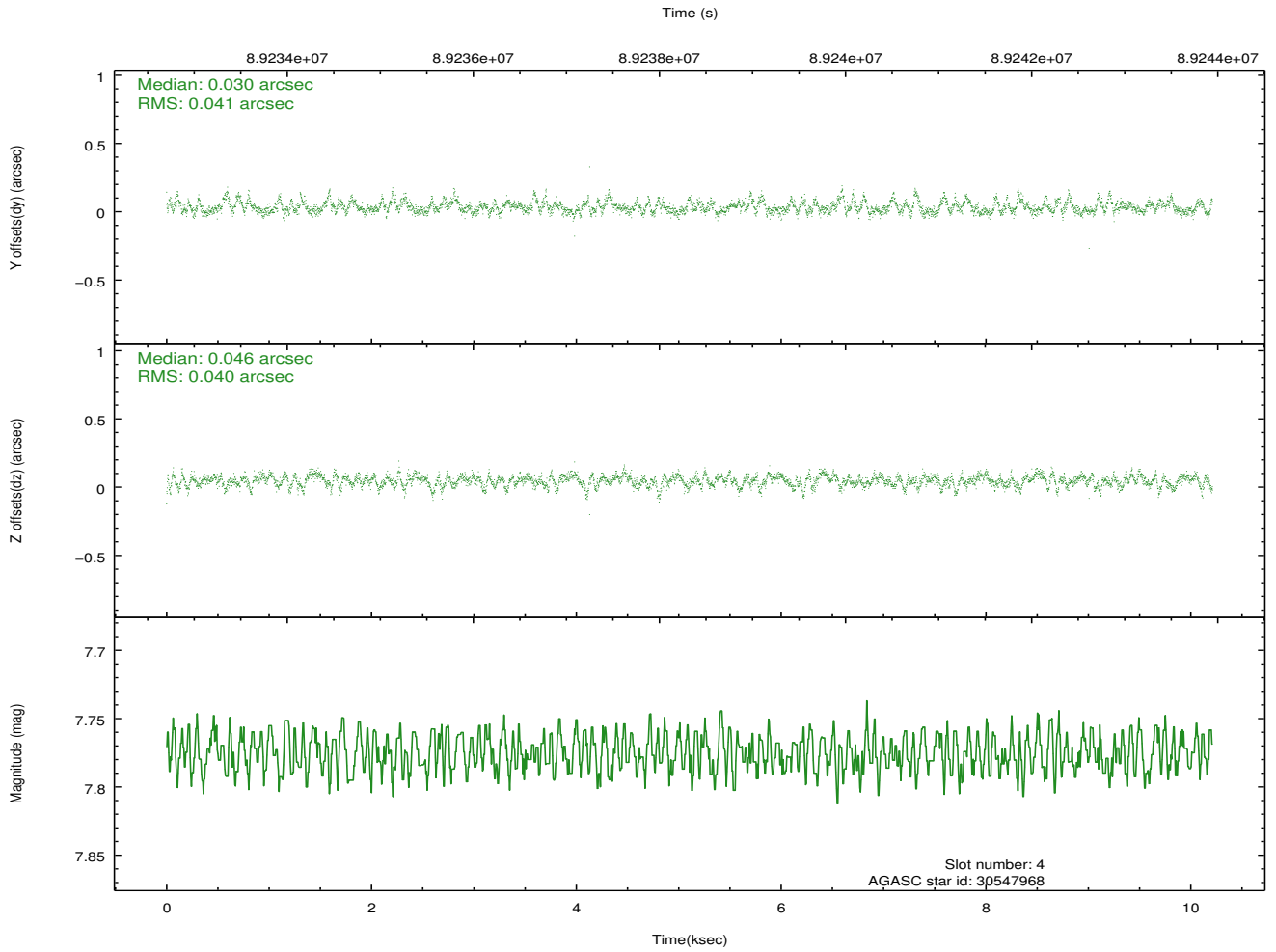
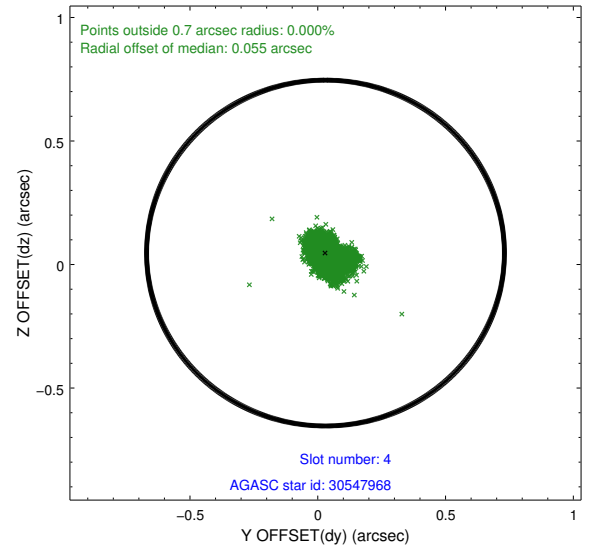
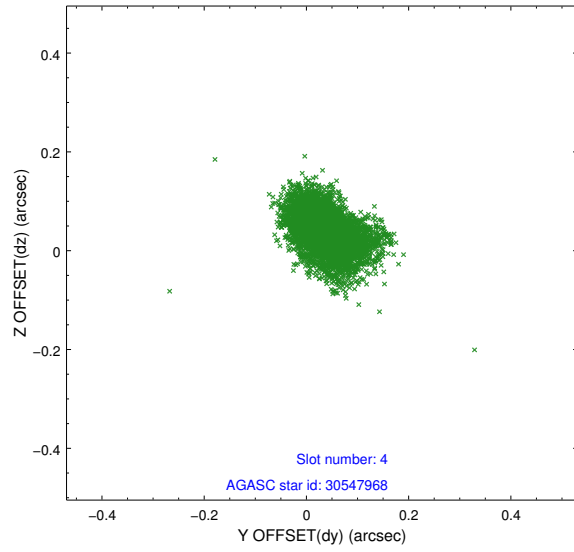
slot	status	id	mag	n_pts	med_dy	med_dz	dr1	dr2	ra	dec	mean_y	mean_z
0	FID	ACIS-S-3	7.36	2490	-0.065	-0.088	0.007	0.011	0.000000	0.000000	58.41	-1857.29
1	FID	ACIS-S-4	7.20	2491	-0.011	0.076	0.006	0.010	0.000000	0.000000	2158.66	179.80
2	FID	ACIS-S-5	7.23	2490	0.048	0.022	0.006	0.010	0.000000	0.000000	-1806.82	174.12
3	GUIDE	30551192	6.62	4983	0.067	0.008	0.060	0.088	137.981814	5.468631	-1154.29	-710.73
4	GUIDE	30547968	7.78	4982	0.030	0.046	0.059	0.101	138.345308	5.815524	395.85	-1633.84
5	GUIDE	30553392	7.99	4983	-0.139	0.196	0.061	0.093	138.519032	5.919513	922.67	-2133.68
6	GUIDE	30424240	8.12	4983	0.163	-0.337	0.062	0.099	137.258897	5.607489	-1359.03	1918.64
7	GUIDE	30549912	8.42	4982	-0.131	0.090	0.058	0.096	138.400116	5.952578	923.51	-1690.95

2.4 Star Slots

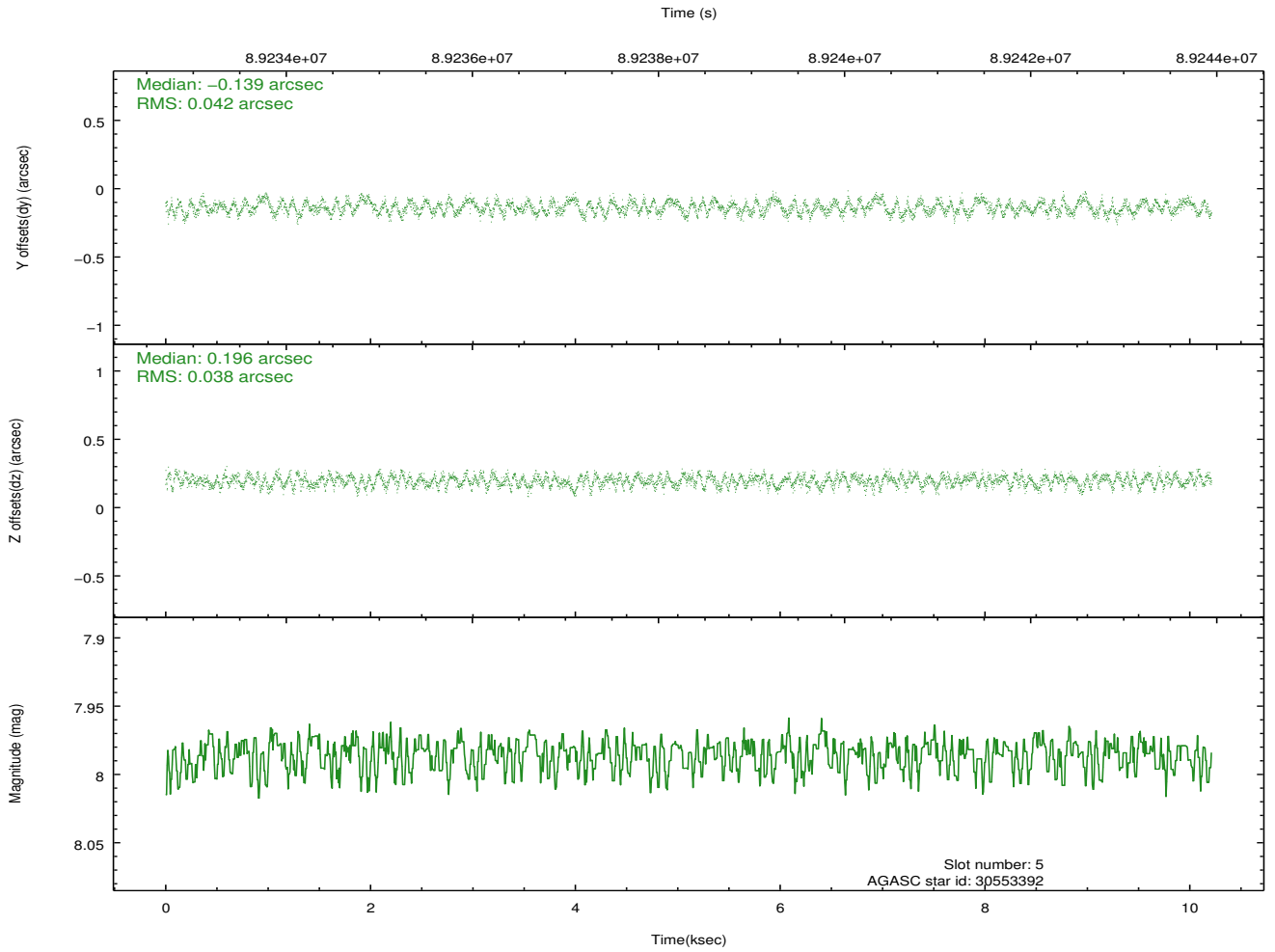
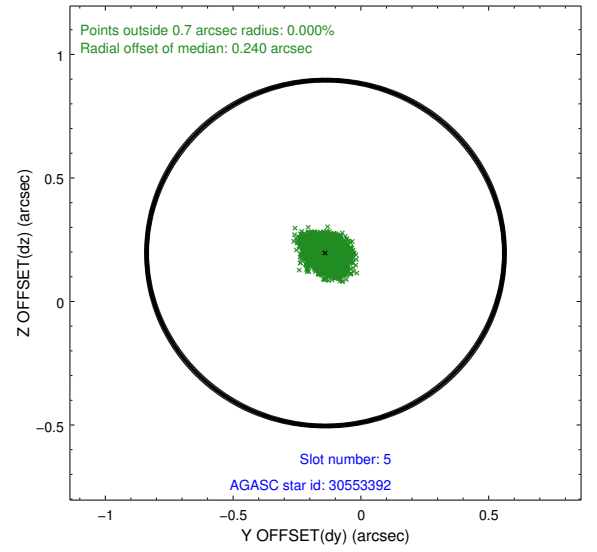
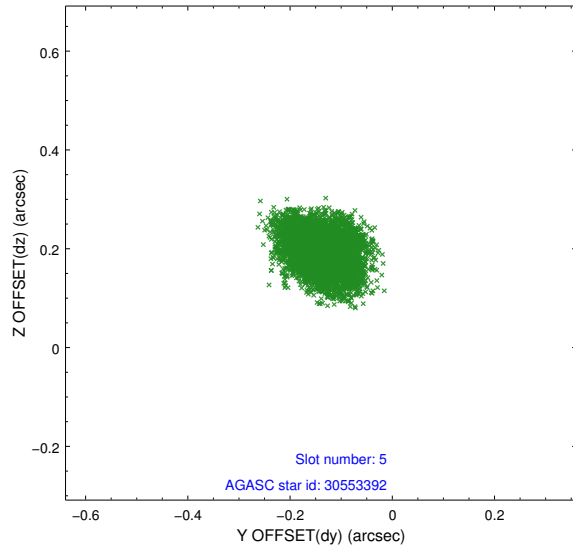
2.4.1 Slot 3



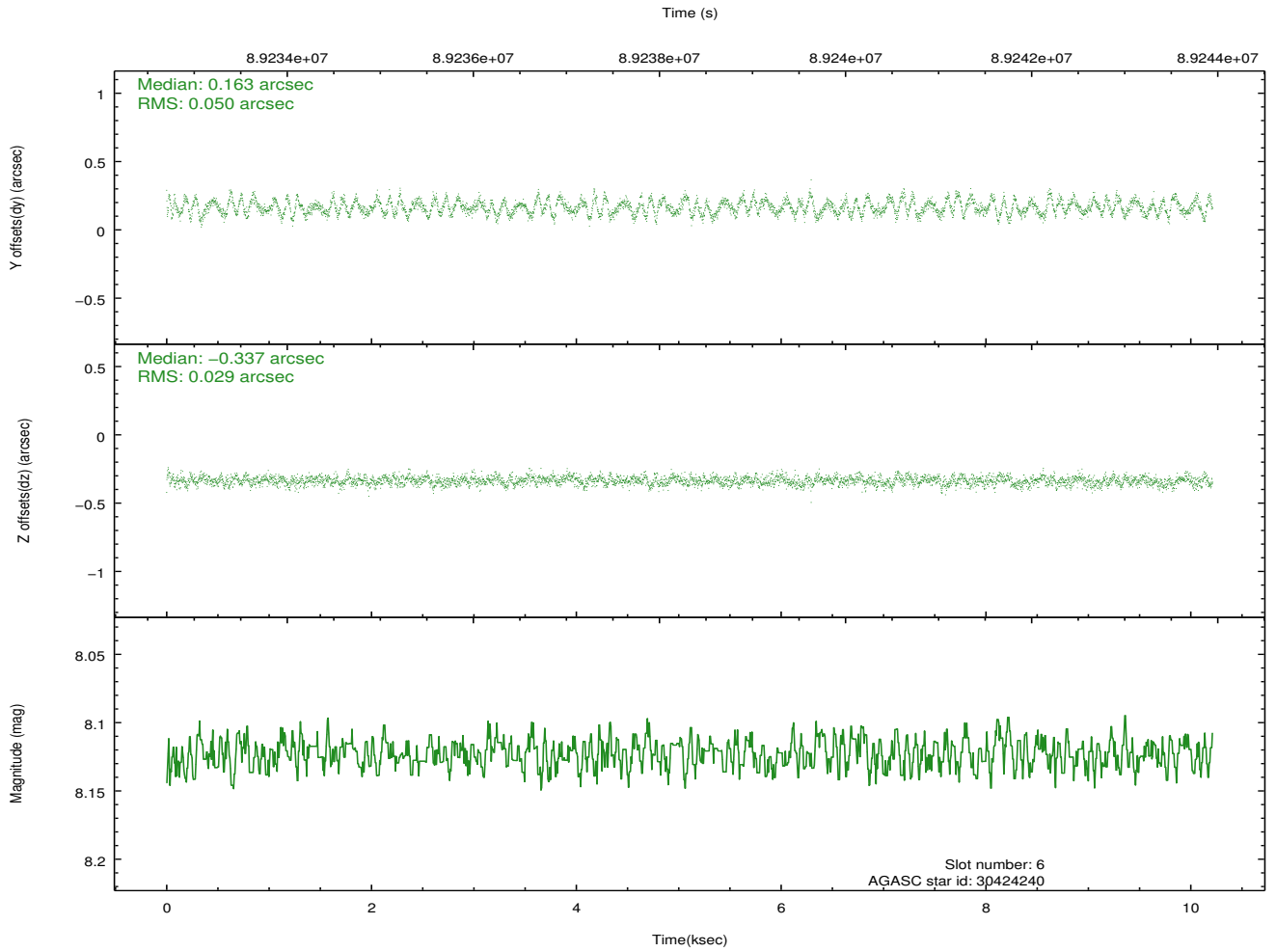
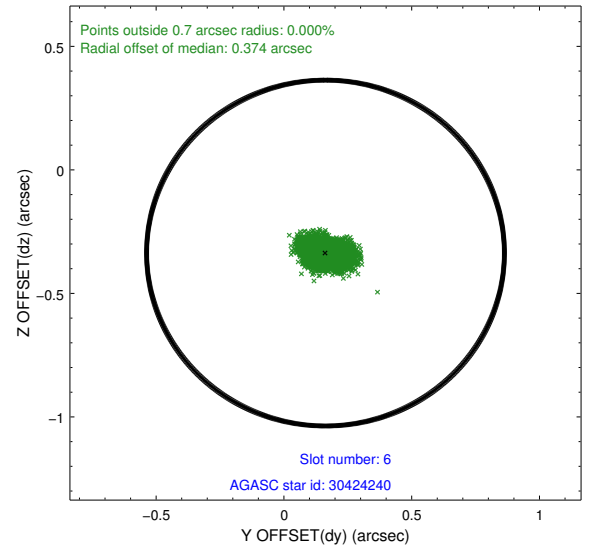
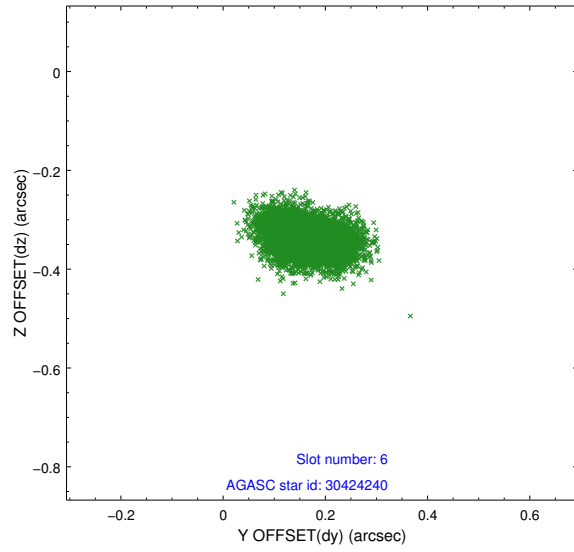
2.4.2 Slot 4



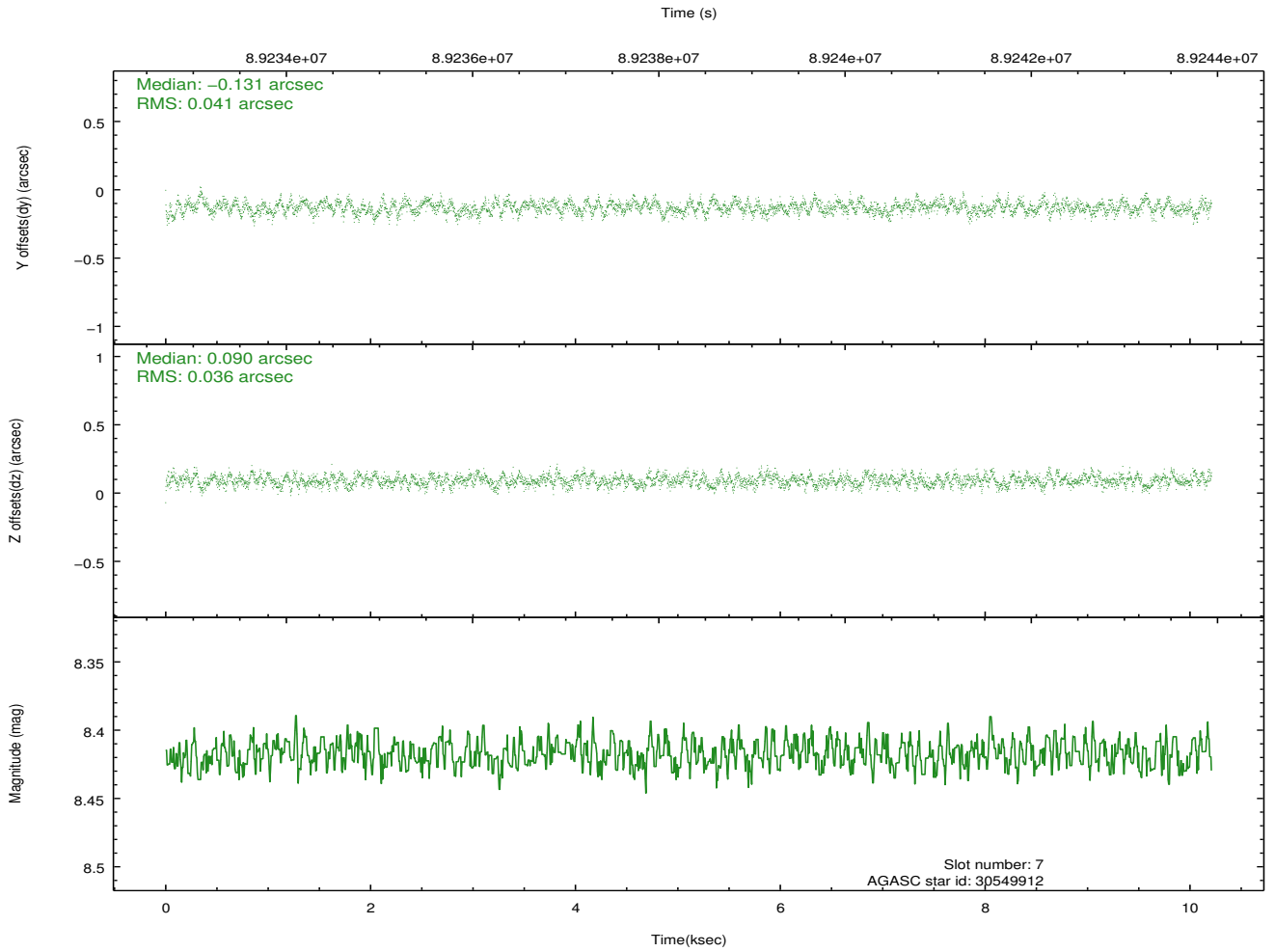
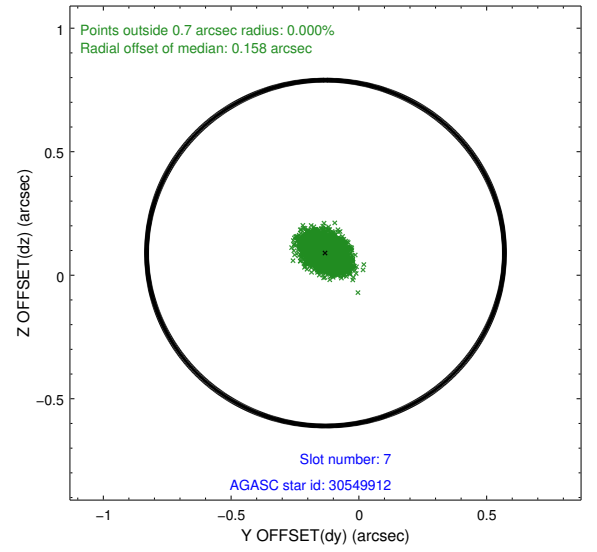
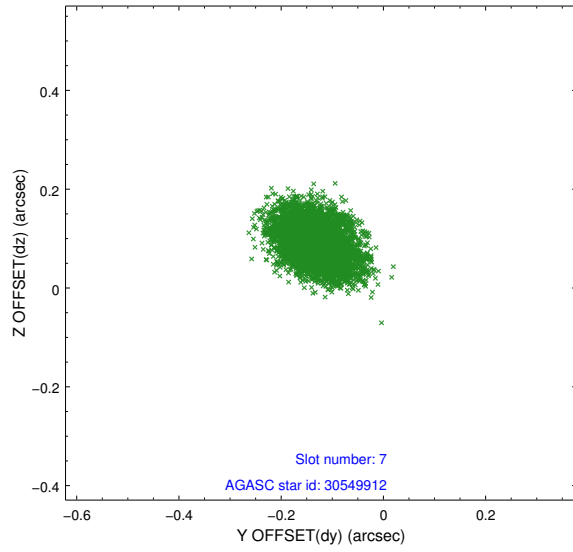
2.4.3 Slot 5



2.4.4 Slot 6

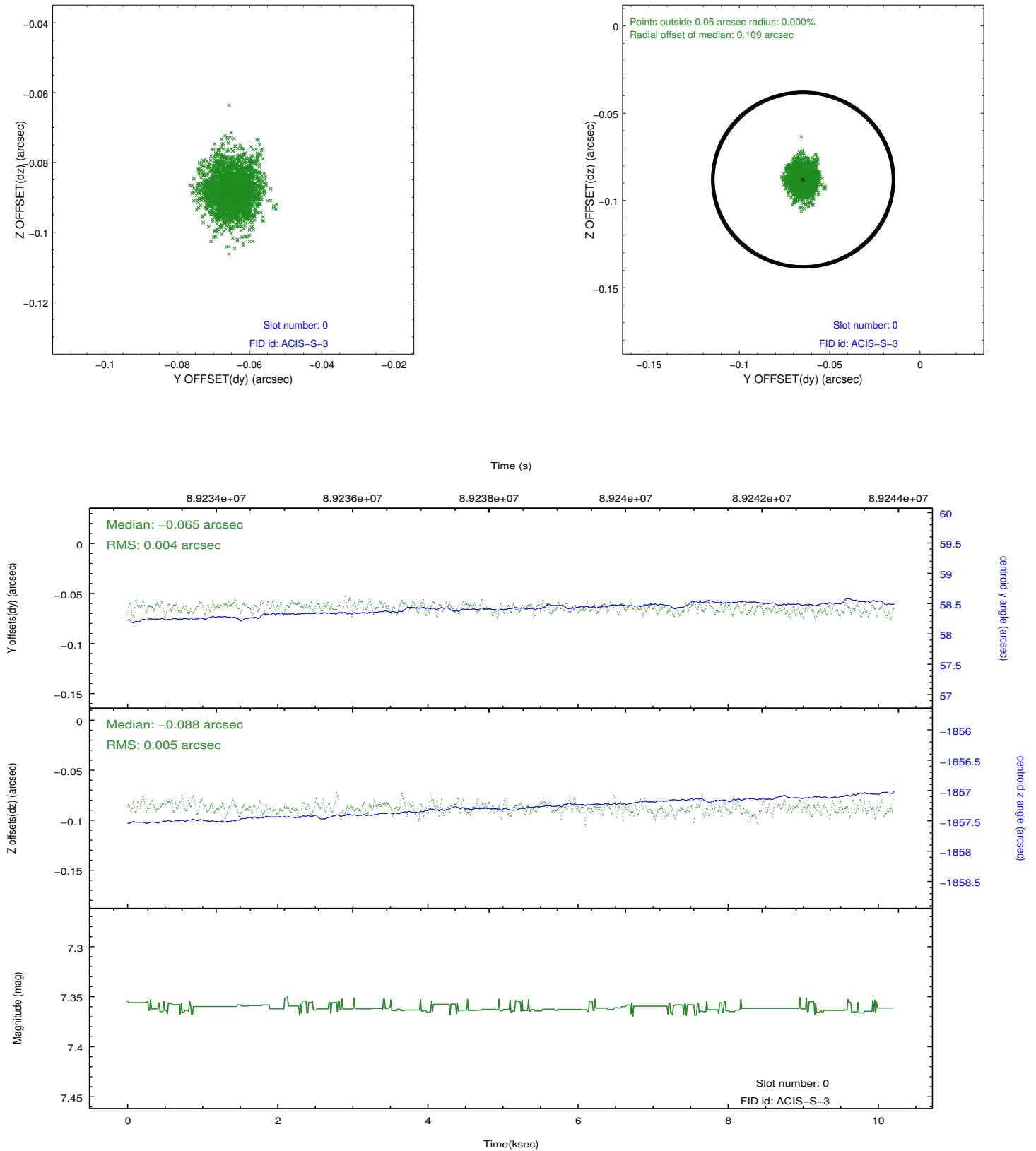


2.4.5 Slot 7

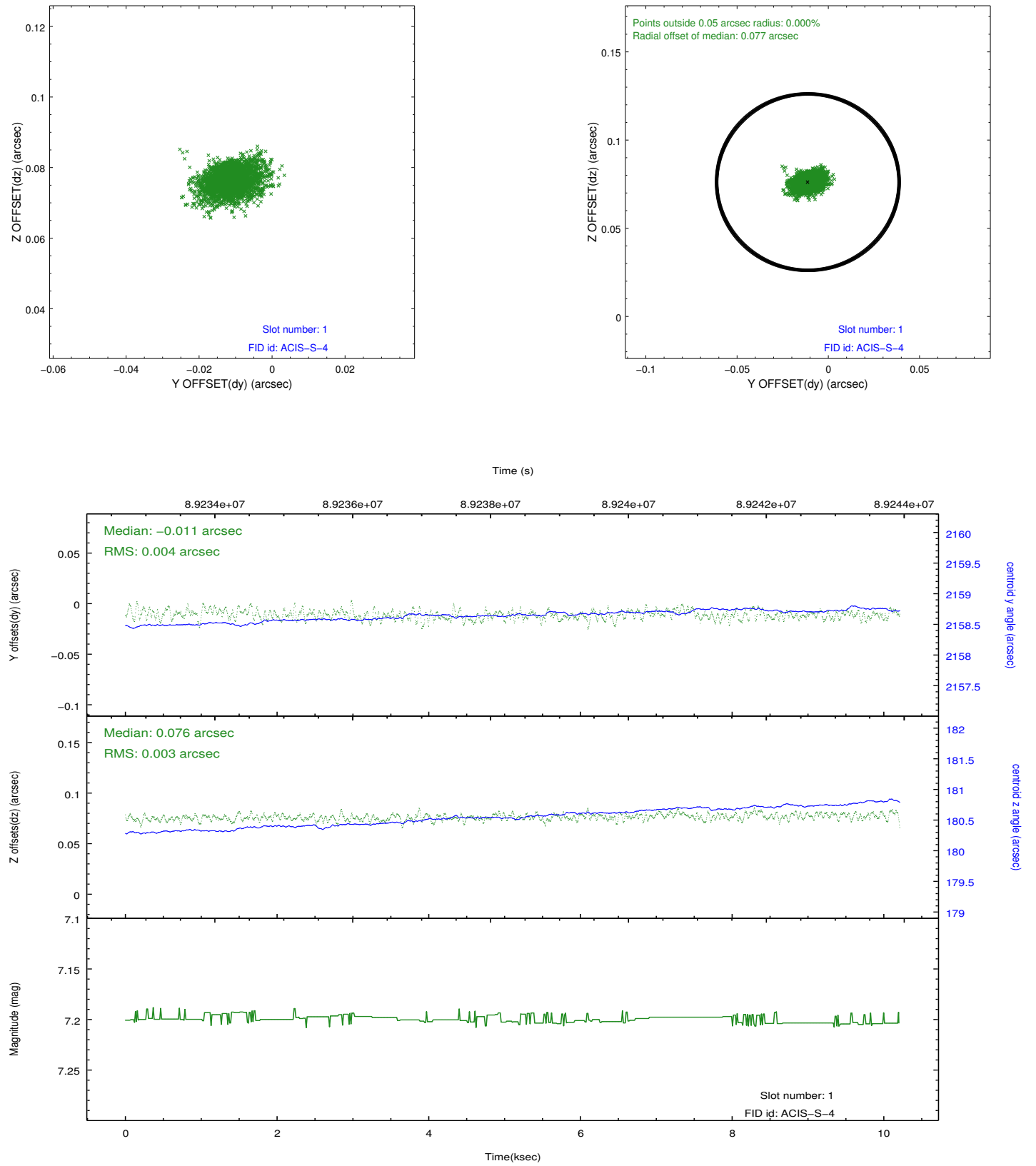


2.5 FID Slots

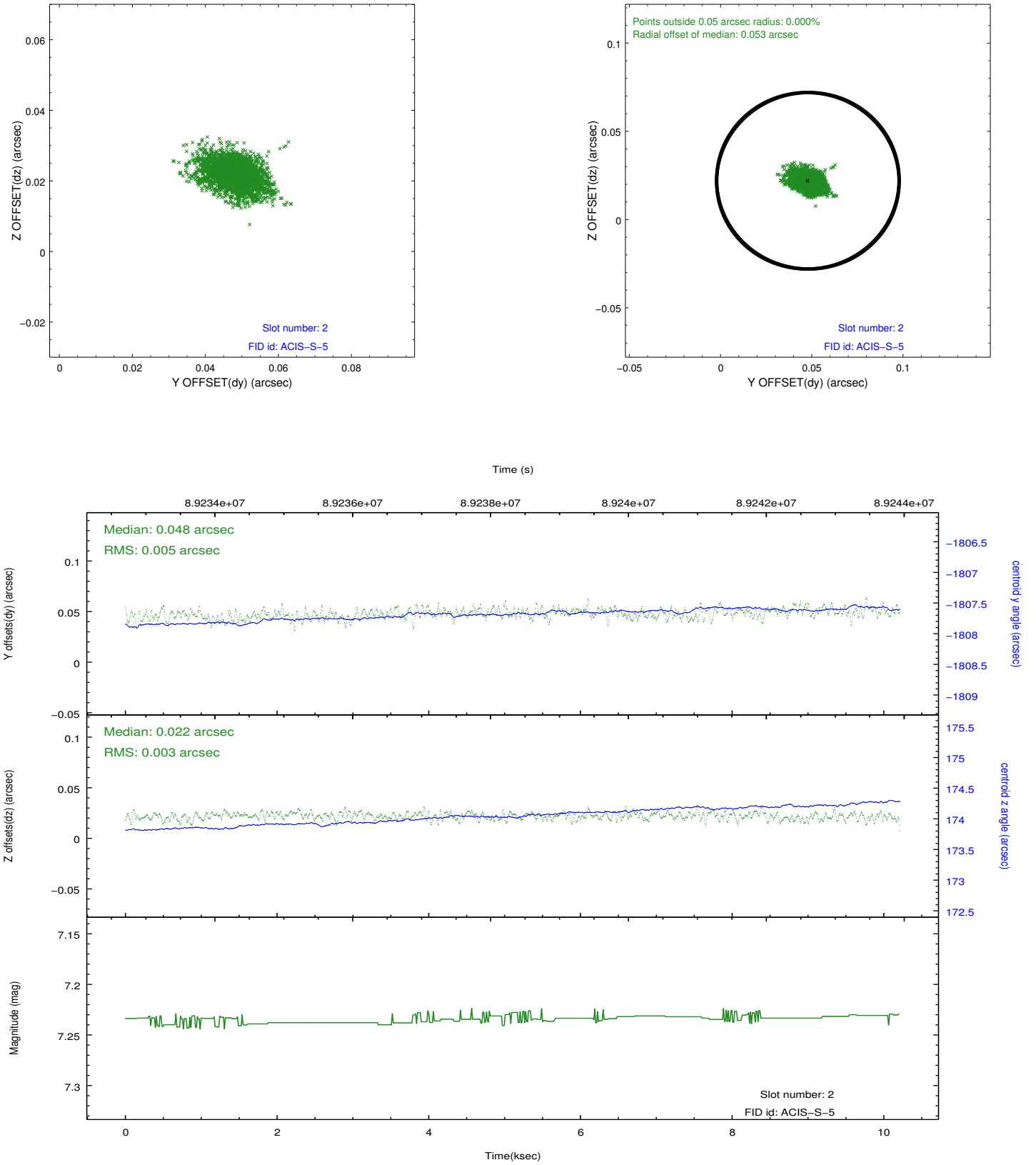
2.5.1 Slot 0



2.5.2 Slot 1



2.5.3 Slot 2



A Summary

A.1 Status

V&V Scientist	Beth Sundheim
V&V Date (YYYY-MM-DD)	2012.09.10
V&V Edition	1
V&V Disposition and Status	OK
V&V Charge Time	9.952

A.2 Comments