

V&V Reference Report

L2 ASCDS Version : 7.6.9

Observation 1627 - L2 Version 001
Chandra X-Ray Center

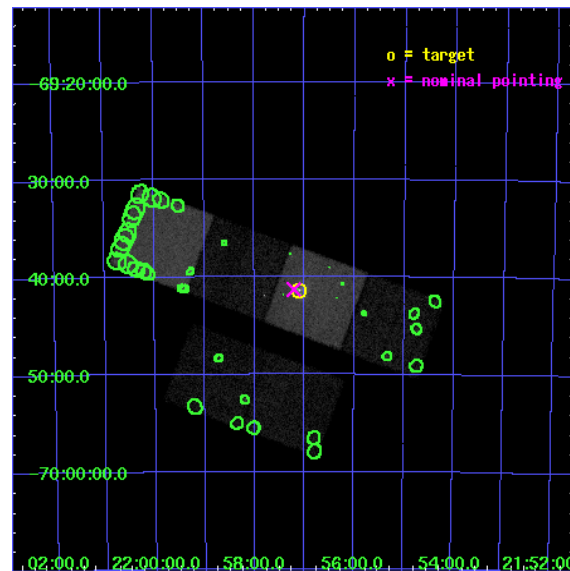
L2 Processing Date : Dec 15 2006

Contents

1	Front	2
2	OBI	3
2.1	OBI	3
2.1.1	Images	3
2.1.2	Bias	3
2.1.3	Parameters	4
2.1.4	Events	4
2.2	Compared Parameters	5
2.3	Aspect	6
2.4	Star Slots	9
2.4.1	Slot 3	9
2.4.2	Slot 4	10
2.4.3	Slot 5	11
2.4.4	Slot 6	12
2.4.5	Slot 7	13
2.5	FID Slots	14
2.5.1	Slot 0	14
2.5.2	Slot 1	15
2.5.3	Slot 2	16
3	Point Sources	17
A	Summary	18
A.1	Status	18
A.2	Comments	18

1 Front

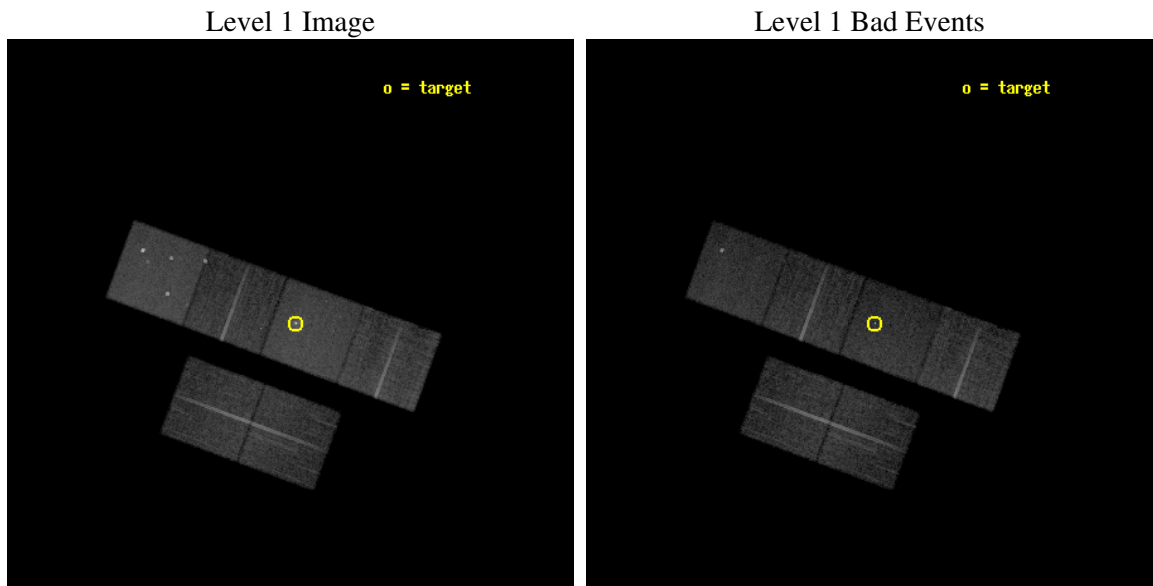
seq_num	700243
obs_id	1627
title	STUDIES OF RADIO JETS AND THE NARROW LINE REGIONS OF ACTIVE GALAXIES
observer	Prof. Andrew Wilson
object	PKS 2153-69
dtcycle	0
cycle	P
ra_targ	329.275
dec_targ	-69.689917
ra_nom	329.30258367557
dec_nom	-69.688233085434
roll_nom	20.156453868195
revision	2
ontime	13948.800012991
livetime	13772.171908267
ontime2	13948.800012991
ontime3	13948.800012991
ontime5	13948.800012991
ontime6	13948.800012991
ontime7	13948.800012991
ontime8	13948.800012991
l2events	154862



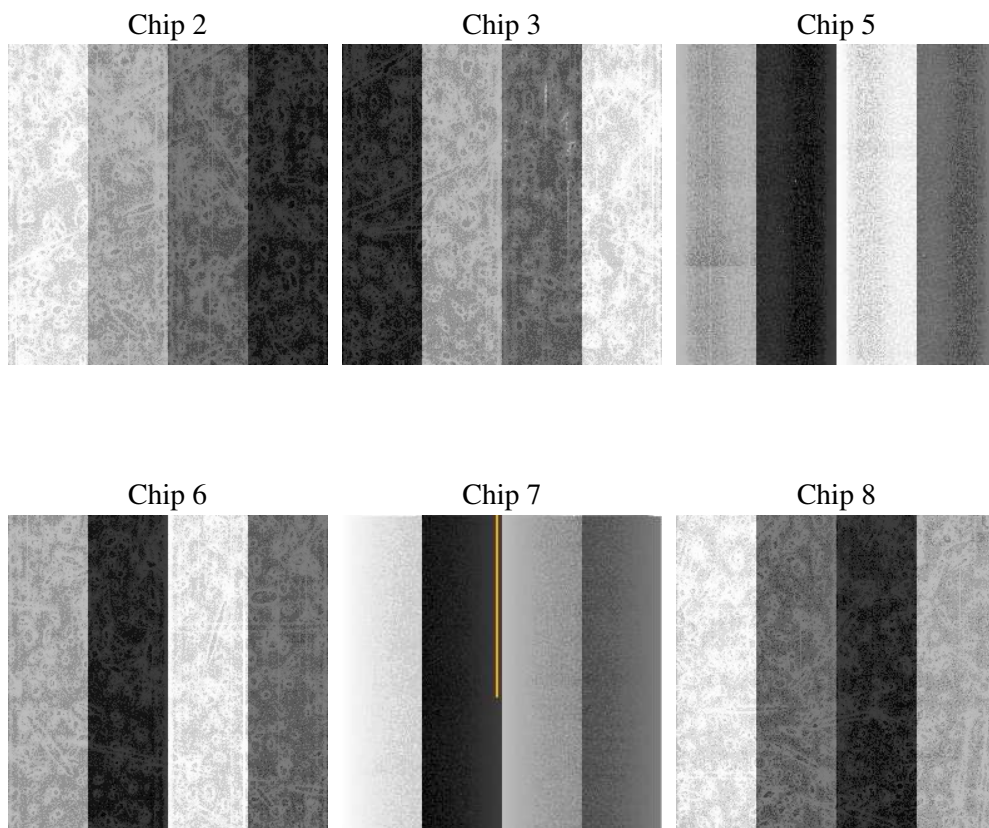
2 OBI

2.1 OBI

2.1.1 Images



2.1.2 Bias



2.1.3 Parameters

obi_num	0
ascdsver	7.6.9
caldsver	3.2.4
date	2006-12-16T01:32:13
revision	2

sched_exp_time	14000.000000
ontime	13952.510409012
ontime2	13952.510409012
ontime3	13952.510379106
ontime5	13952.510409012
ontime6	13952.510409012
ontime7	13952.510409012
ontime8	13952.510409012
l1events	665189

2.1.4 Events

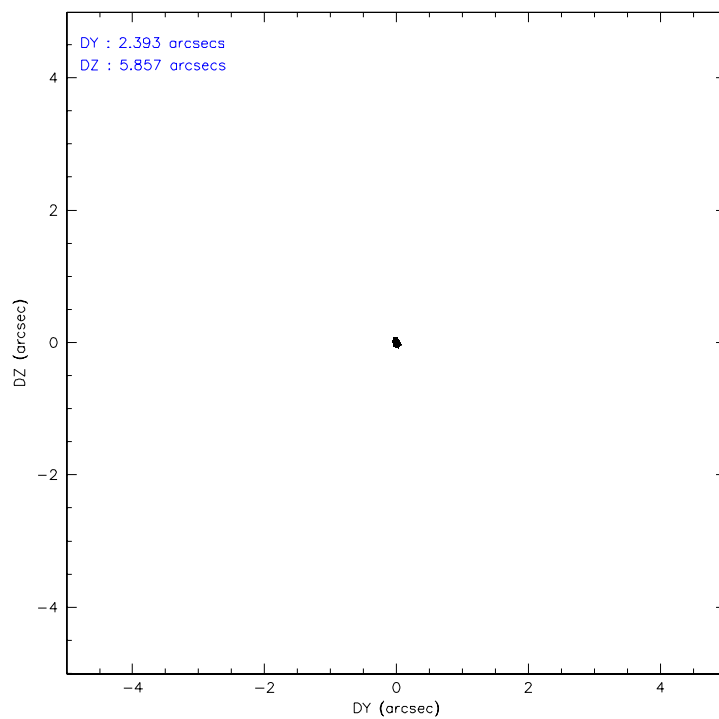
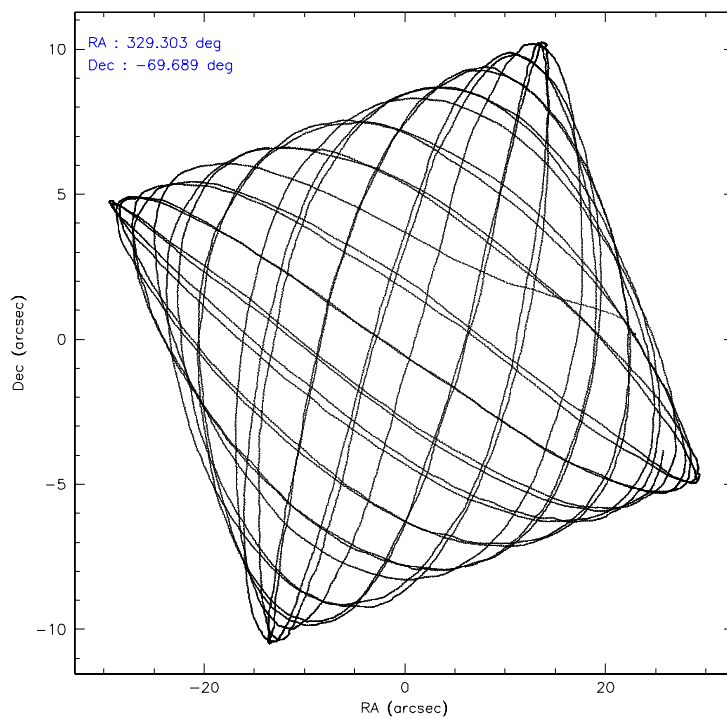
	ccd 2	ccd 3	ccd 5	ccd 6	ccd 7	ccd 8
level 1 events	93561	89762	138892	92552	134678	115744
rejected events	83014	79063	73188	80505	75365	92564
rejected %	88%	88%	52%	86%	55%	79%

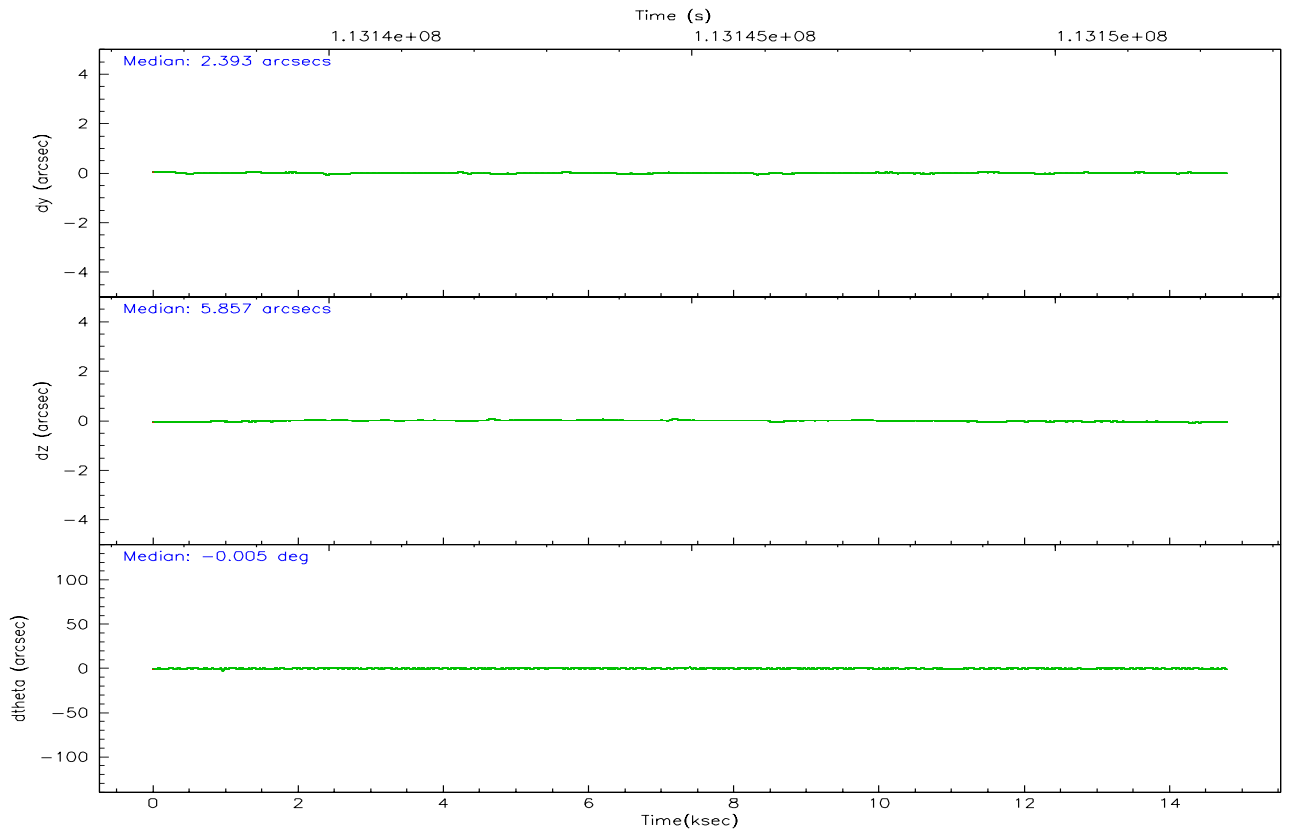
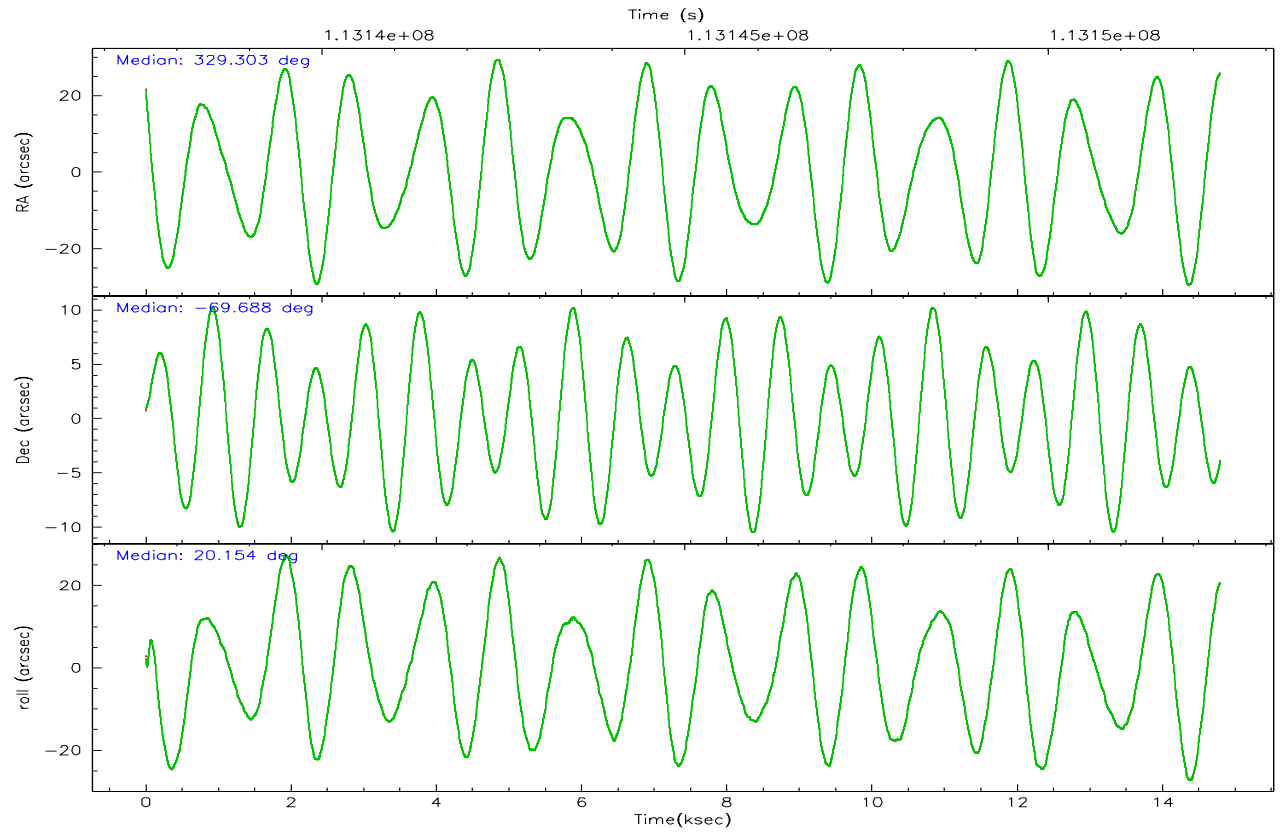
	ccd 2	ccd 3	ccd 5	ccd 6	ccd 7	ccd 8
grade 0 events	4330	4699	9188	5463	6353	7830
	4%	5%	6%	5%	4%	6%
grade 1 events	40	46	885	46	188	55
	0%	0%	0%	0%	0%	0%
grade 2 events	2355	2203	19724	2352	14317	4899
	2%	2%	14%	2%	10%	4%
grade 3 events	951	980	1638	1104	3784	2409
	1%	1%	1%	1%	2%	2%
grade 4 events	1039	974	1528	1041	3545	2251
	1%	1%	1%	1%	2%	1%
grade 5 events	3152	3473	6509	4006	8525	4809
	3%	3%	4%	4%	6%	4%
grade 6 events	1874	1846	33643	2091	31331	5792
	2%	2%	24%	2%	23%	5%
grade 7 events	79820	75541	65777	76449	66635	87699
	85%	84%	47%	82%	49%	75%

2.2 Compared Parameters

Parameter	Planned	Actual	Parameter	Planned	Actual
Instrument	ACIS	ACIS	Obspar format version number	6	6
Detector	ACIS-235678	ACIS-235678	Obspar file type	PREDICTED	ACTUAL
Grating	NONE	NONE	Obspar update status	NONE	UPDATED
Data mode	VFAINT	VFAINT	Number of optional ACIS chips dropped	0	0
Observation mode	POINTING	POINTING	On-chip summing requested	N	N
Pointing RA	329.252938	329.3025836755691	Subarray requested	NONE	NONE
Pointing Dec	-69.709355	-69.68823308543445	Alternating exposures requested	N	N
Pointing Roll	19.953280	20.15645386819455	Primary exposure time	0.000000	3.2
SIM focus pos (mm)	-0.684267	-0.6828225247311905			
SIM defocus (mm)	0	0.001444936568705701			
SIM translation stage pos (mm)	-190.132523	-190.1400660498719			
SIM translation stage offset (mm)	0	0.00754346686406393			
Observation start time	113138372.184000	113137115.74152			
Observation start date	2001-08-02T11:18:28	2001-08-02T10:58:35			
Observation end time	113152372.184000	113153029.89214			
Observation end date	2001-08-02T15:11:48	2001-08-02T15:23:49			
Read mode	TIMED	TIMED			

2.3 Aspect



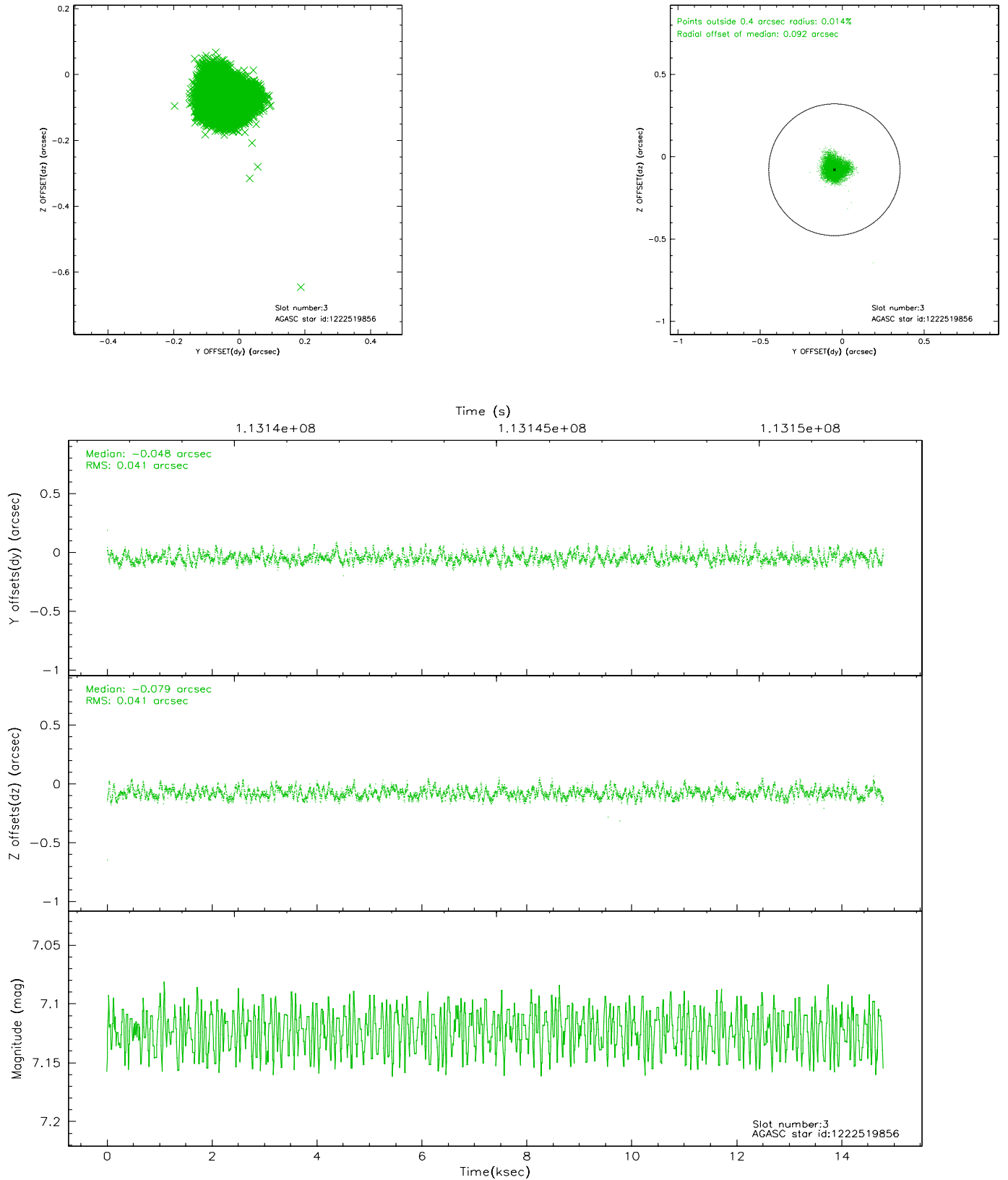


Slot Statistics

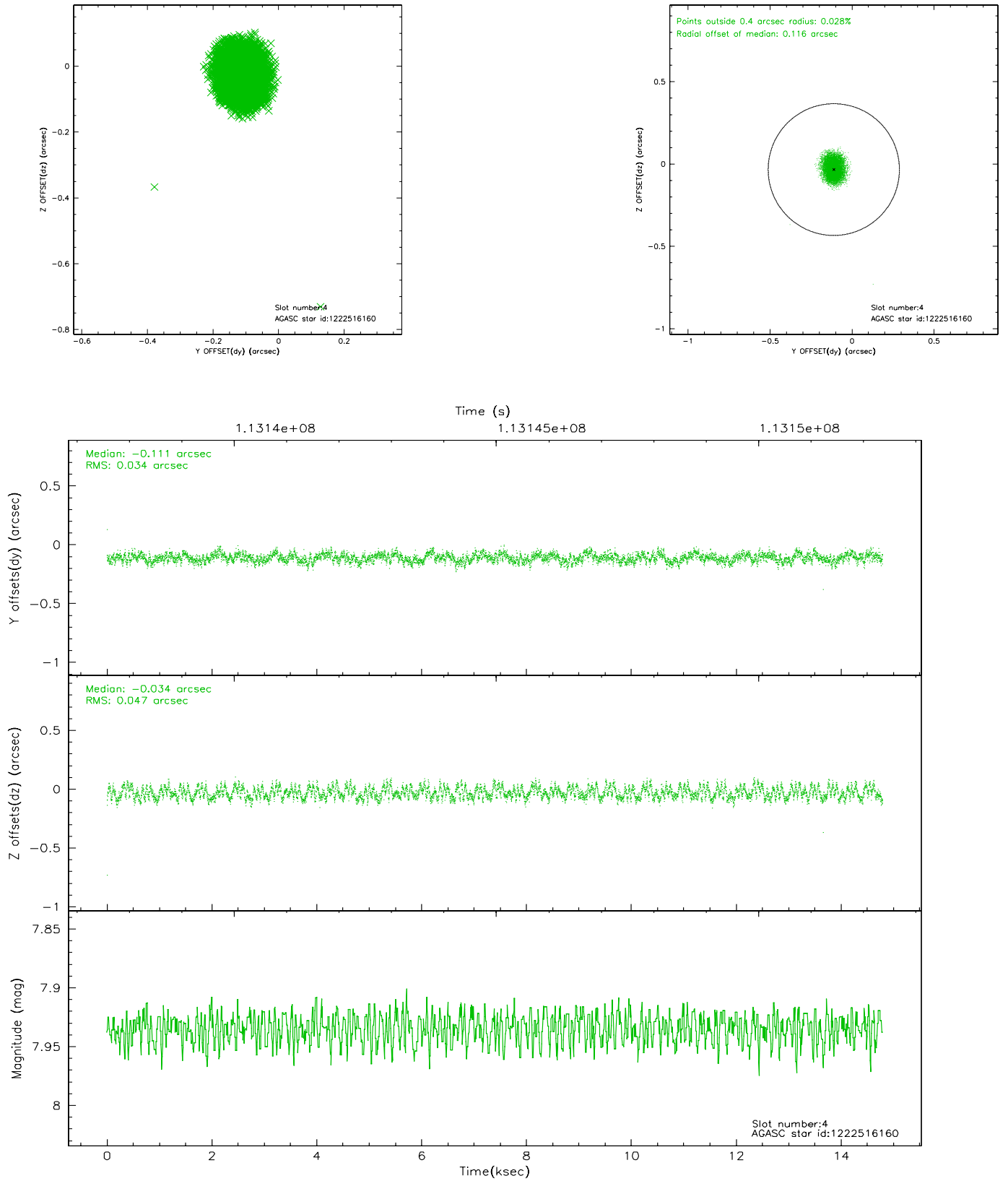
slot	status	id	mag	n_pts	med_dy	med_dz	dr1	dr2	ra	dec	mean_y	mean_z
0	FID	ACIS-S-2	7.12	3608	-0.029	0.023	0.007	0.011	0.000000	0.000000	-755.00	-1726.99
1	FID	ACIS-S-4	7.20	3608	-0.070	0.008	0.005	0.009	0.000000	0.000000	2158.05	181.24
2	FID	ACIS-S-5	7.24	3608	0.067	-0.022	0.006	0.010	0.000000	0.000000	-1807.40	175.13
3	GUIDE	1222519856	7.12	7217	-0.048	-0.079	0.062	0.096	328.864671	-70.115366	-946.55	-1212.05
4	GUIDE	1222516160	7.93	7217	-0.111	-0.034	0.063	0.095	327.947629	-70.351694	-2280.63	-1649.56
5	GUIDE	1221993040	8.81	7212	-0.022	0.020	0.063	0.104	329.911887	-69.225732	1382.68	1346.20
6	GUIDE	1222124168	9.46	7178	0.114	0.176	0.100	0.157	330.495563	-69.004603	2366.58	1824.42
7	GUIDE	1222639984	8.86	7211	0.065	-0.083	0.061	0.100	330.310234	-69.445781	1575.85	426.52

2.4 Star Slots

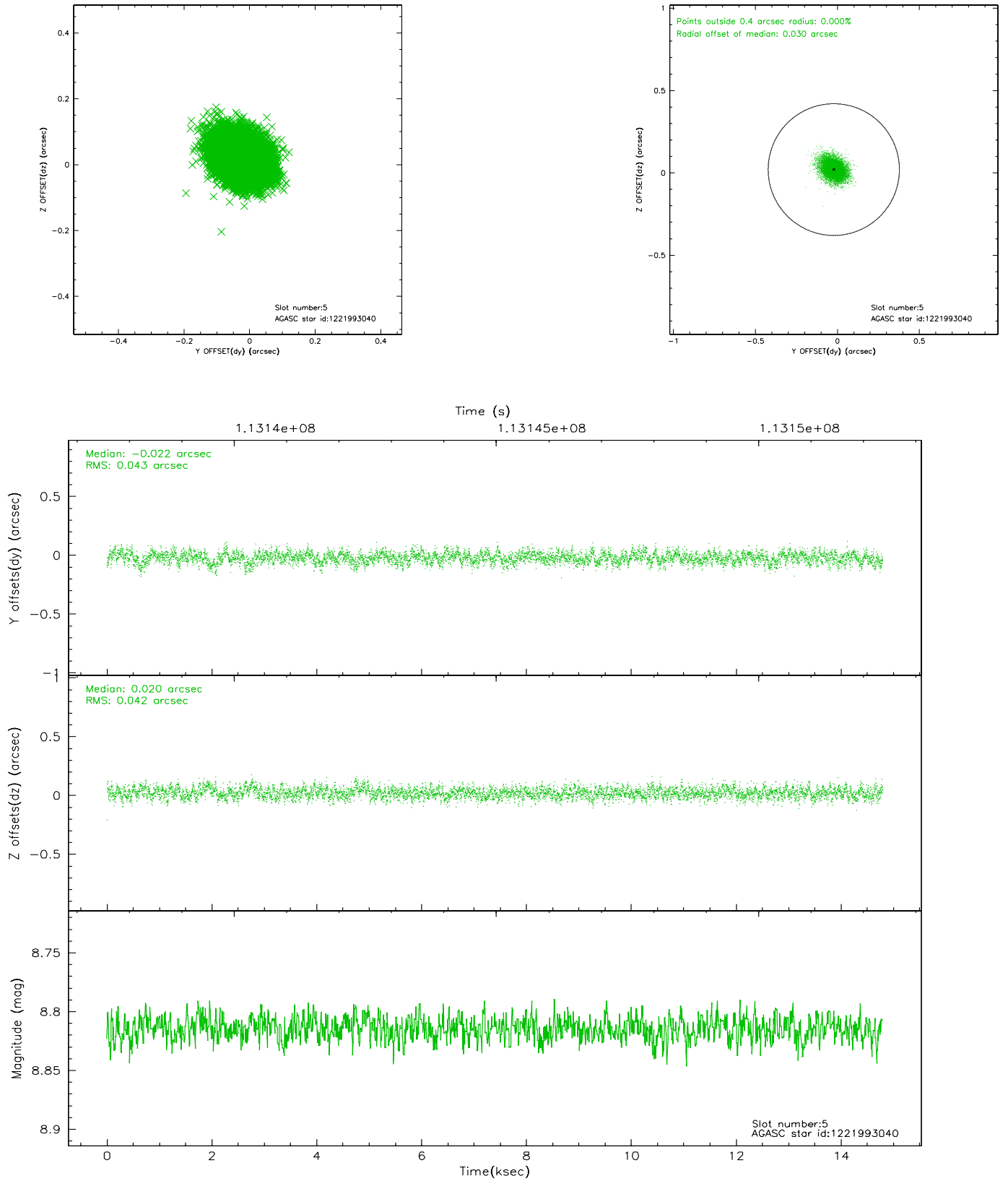
2.4.1 Slot 3



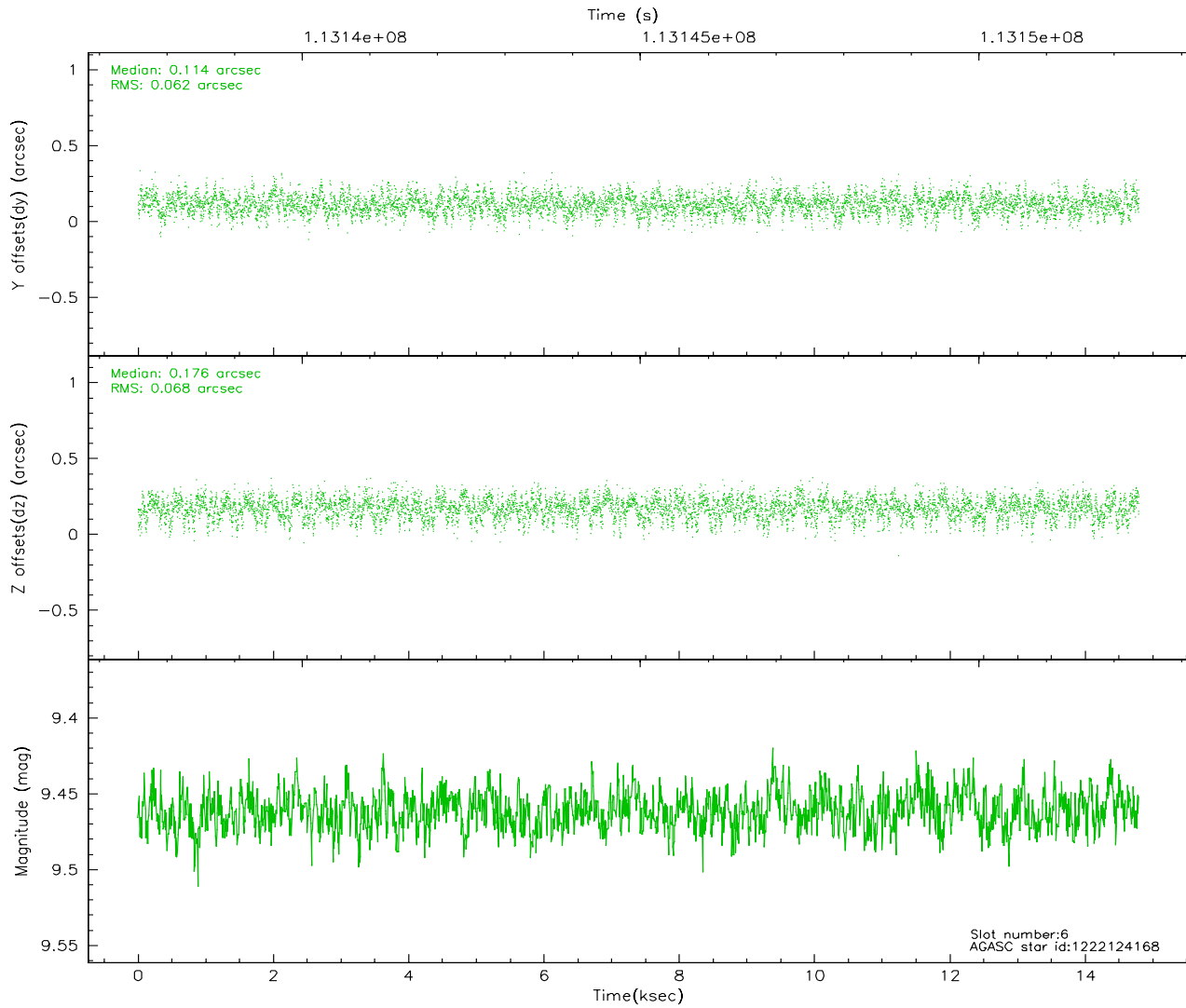
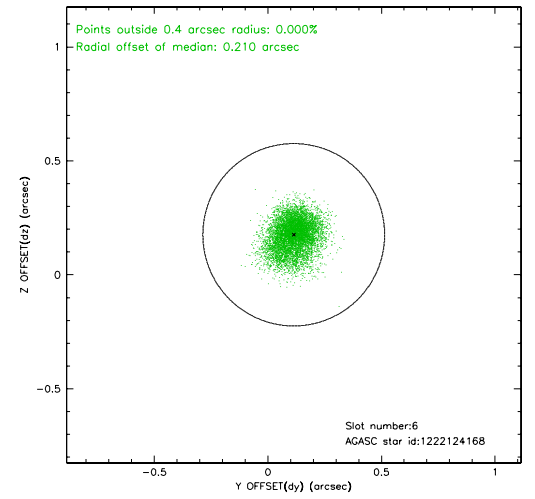
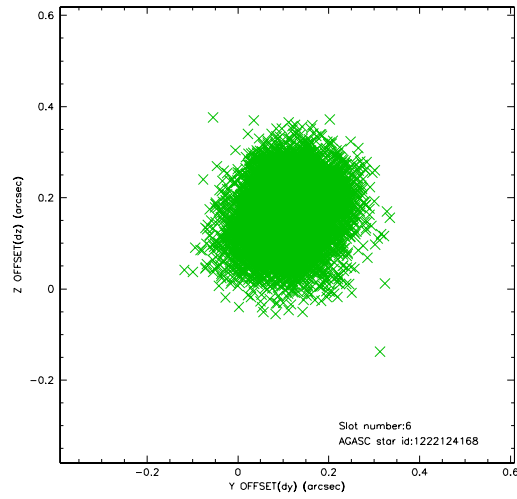
2.4.2 Slot 4



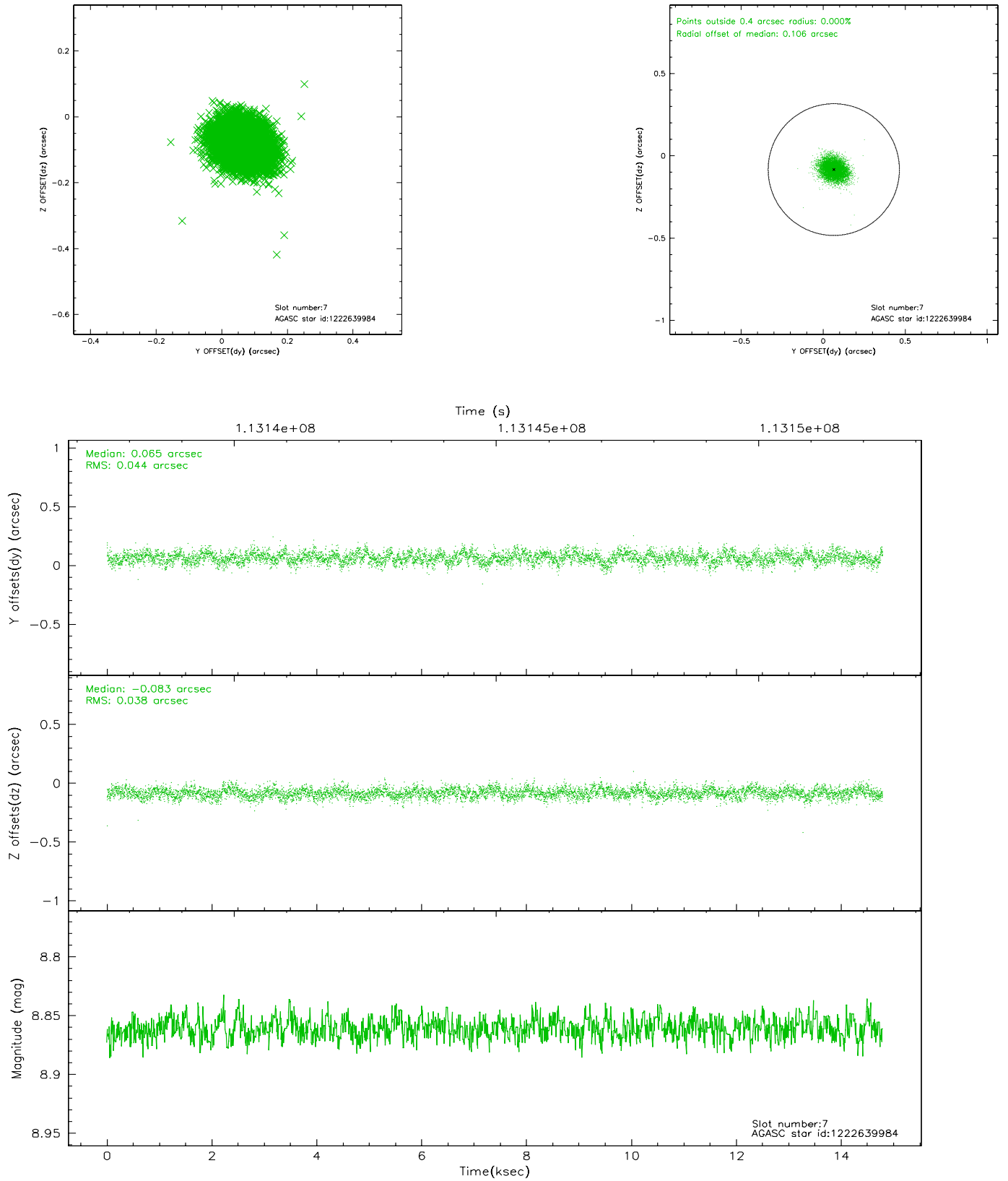
2.4.3 Slot 5



2.4.4 Slot 6

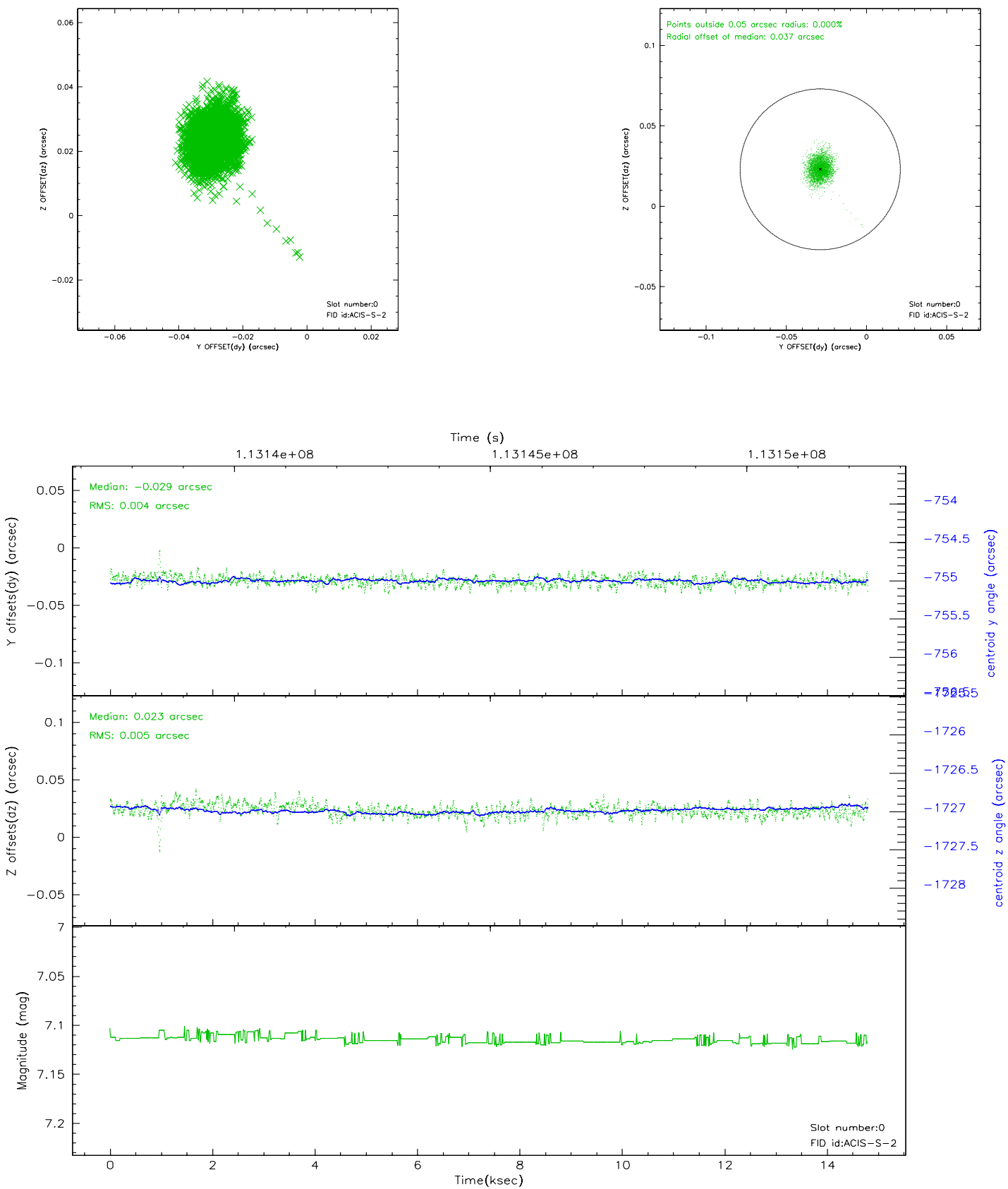


2.4.5 Slot 7

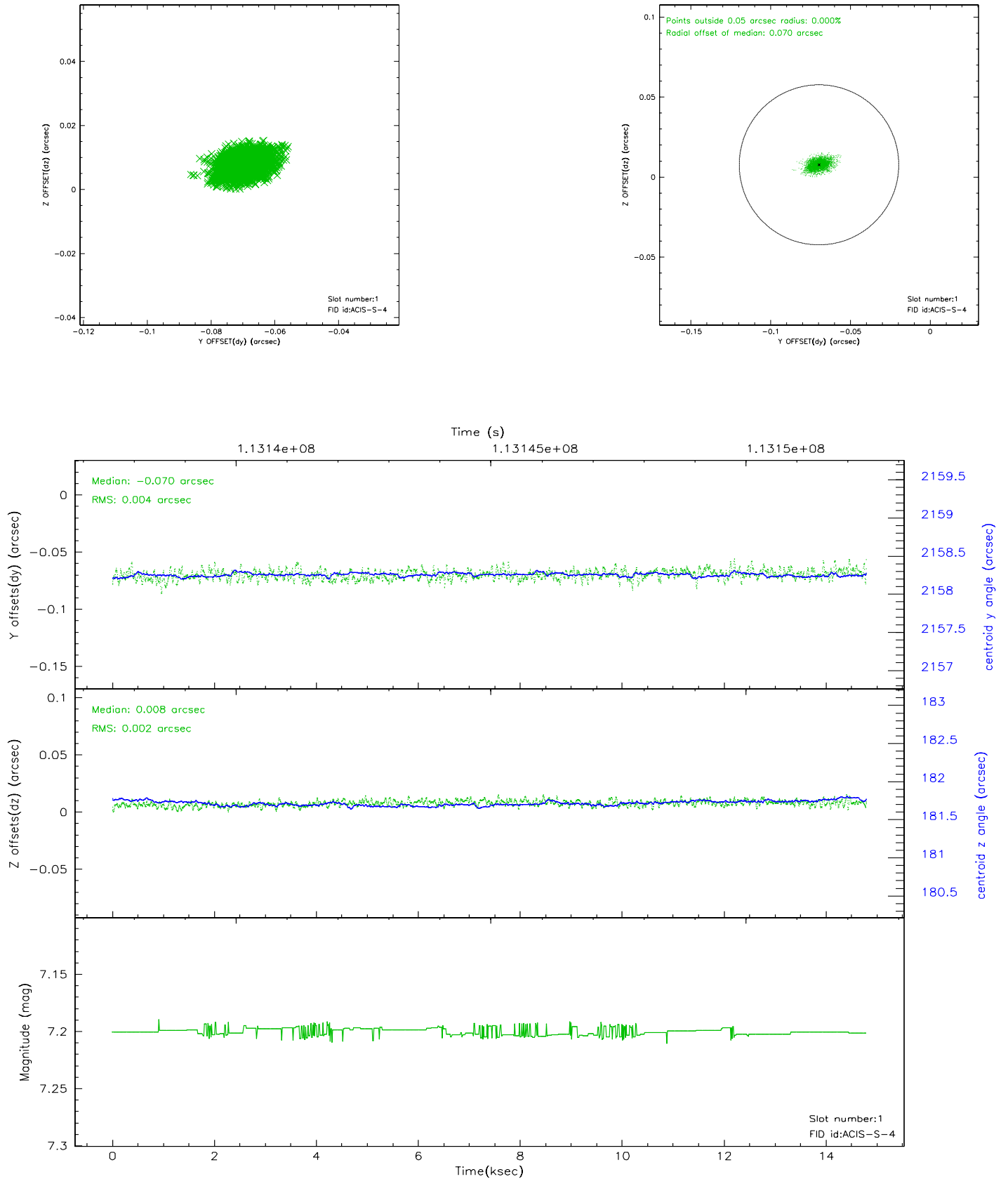


2.5 FID Slots

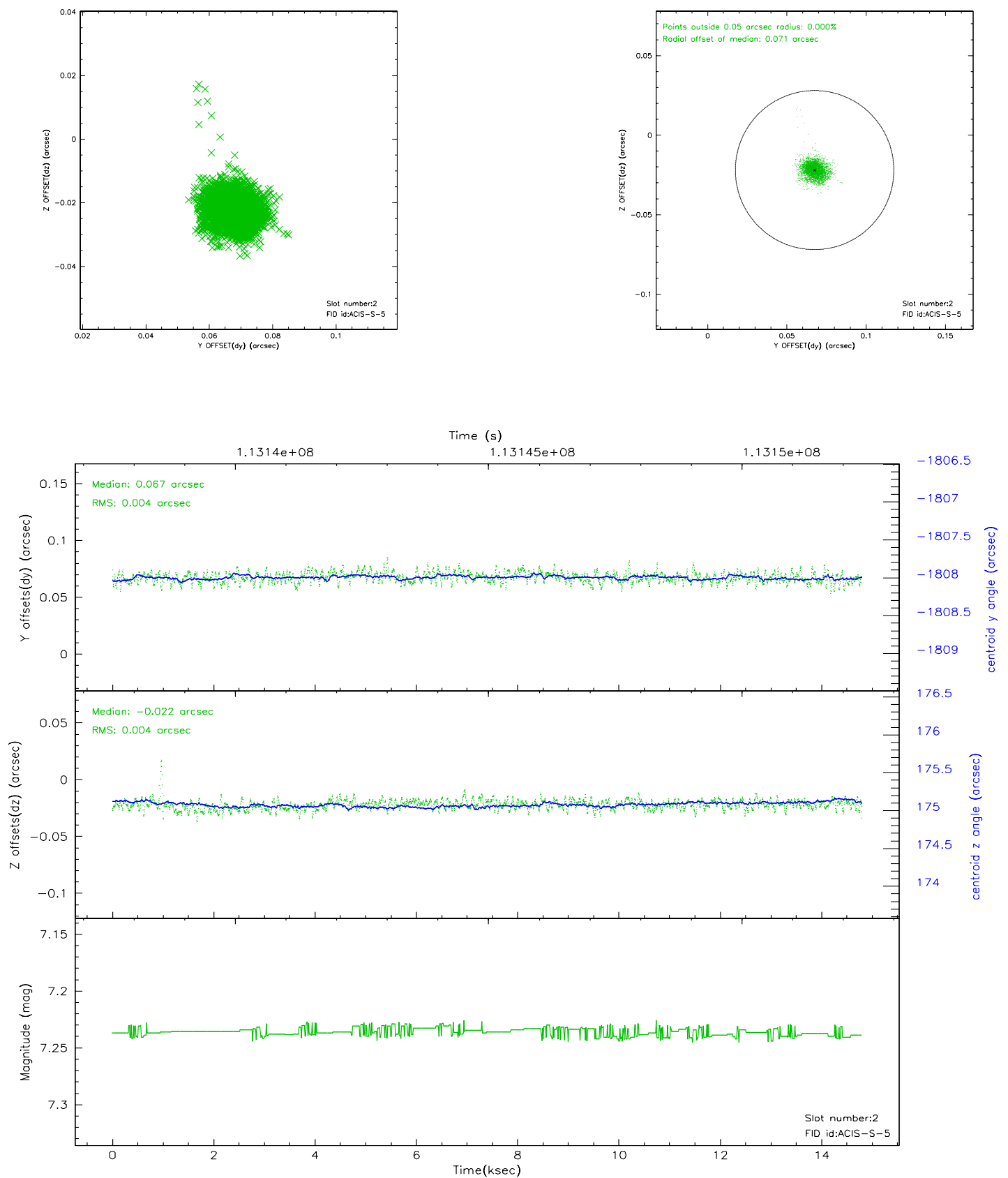
2.5.1 Slot 0



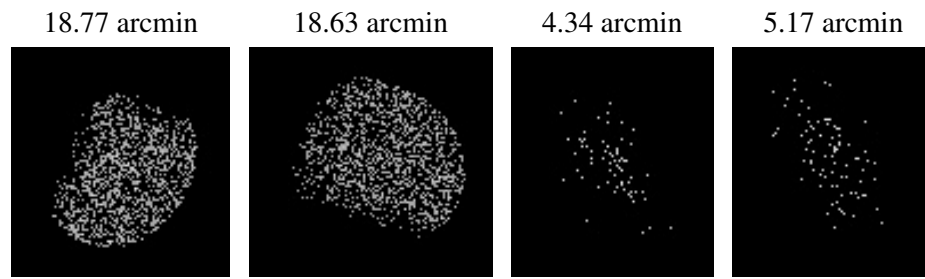
2.5.2 Slot 1



2.5.3 Slot 2



3 Point Sources



A Summary

A.1 Status

V&V Scientist	Beth Sundheim
V&V Date (YYYY-MM-DD)	2006.12.17
V&V Edition	1
V&V Disposition and Status	OK
V&V Charge Time	13.949

A.2 Comments