

V&V Reference Report

L2 ASCDS Version : 7.6.9

Observation 1619 - L2 Version 001
Chandra X-Ray Center

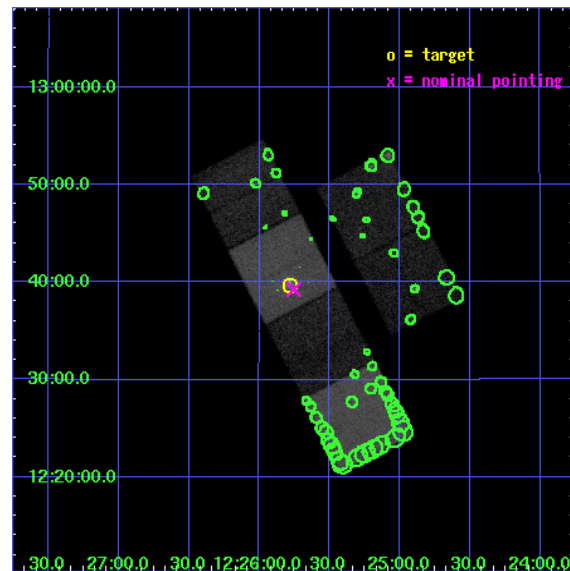
L2 Processing Date : Nov 28 2006

Contents

1	Front	2
2	OBI	3
2.1	OBI	3
2.1.1	Images	3
2.1.2	Bias	3
2.1.3	Parameters	4
2.1.4	Events	4
2.2	Compared Parameters	5
2.3	Aspect	6
2.4	Star Slots	9
2.4.1	Slot 3	9
2.4.2	Slot 4	10
2.4.3	Slot 5	11
2.4.4	Slot 6	12
2.4.5	Slot 7	13
2.5	FID Slots	14
2.5.1	Slot 0	14
2.5.2	Slot 1	15
2.5.3	Slot 2	16
3	Point Sources	17
A	Summary	18
A.1	Status	18
A.2	Comments	18

1 Front

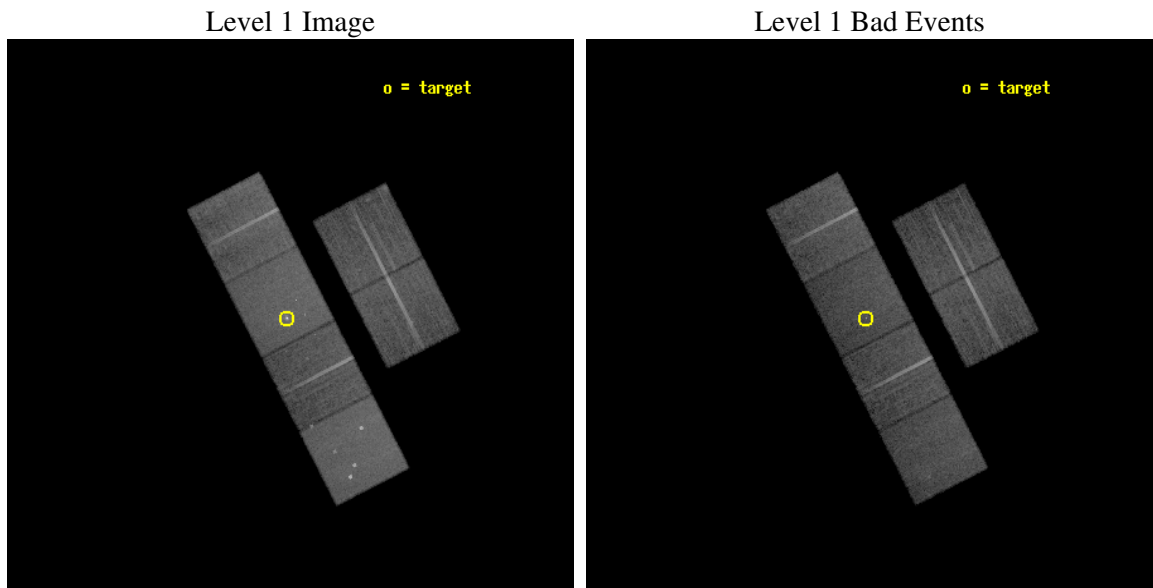
seq_num	700235
obs_id	1619
title	STUDIES OF RADIO JETS AND THE NARROW LINE REGIONS OF ACTIVE GALAXIES
observer	Prof. Andrew Wilson
object	NGC4388
dtcycle	0
cycle	P
ra_targ	186.444583
dec_targ	12.662083
ra_nom	186.43847613275
dec_nom	12.654348374662
roll_nom	242.80751583196
revision	2
ontime	20230.400018841
livetime	19974.230512518
ontime2	20230.400018841
ontime3	20227.159058601
ontime5	20230.400018841
ontime6	20230.400018841
ontime7	20230.400018841
ontime8	20230.400018841
l2events	224946



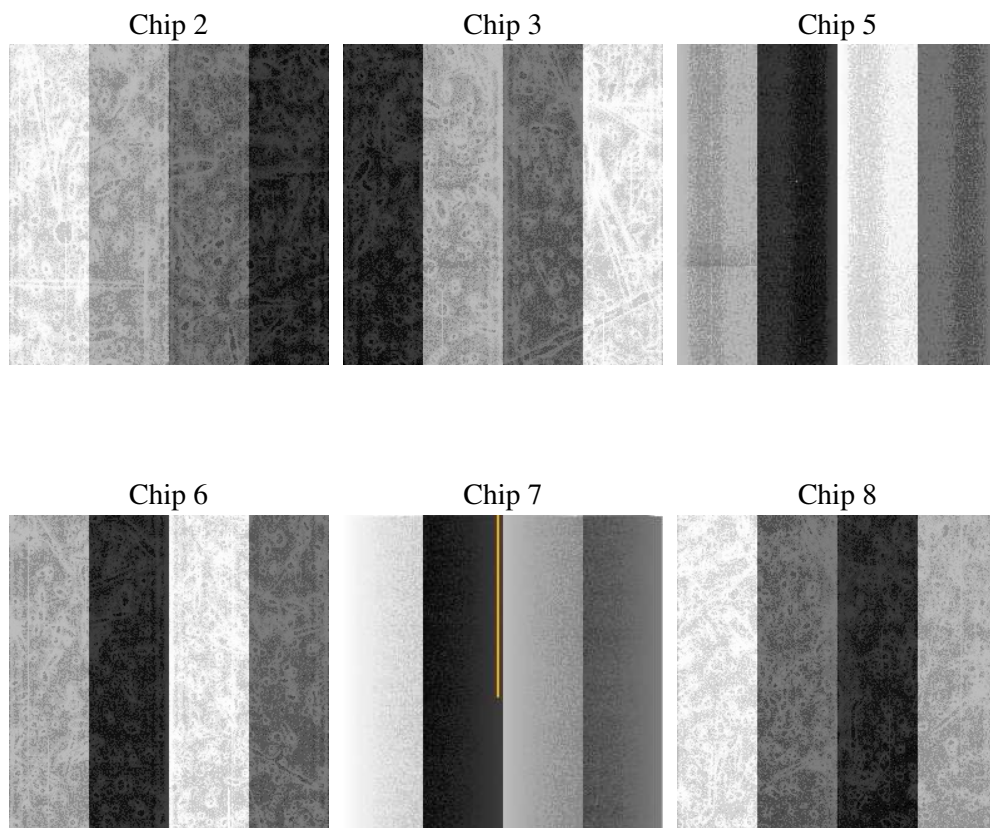
2 OBI

2.1 OBI

2.1.1 Images



2.1.2 Bias



2.1.3 Parameters

obi_num	1
ascdsver	7.6.9
caldsver	3.2.4
date	2006-11-28T03:46:48
revision	2

sched_exp_time	20280.000000
ontime	20236.79775849
ontime2	20236.79775849
ontime3	20233.556798249
ontime5	20236.797788411
ontime6	20236.79775849
ontime7	20236.79775849
ontime8	20236.79775849
l1events	950722

2.1.4 Events

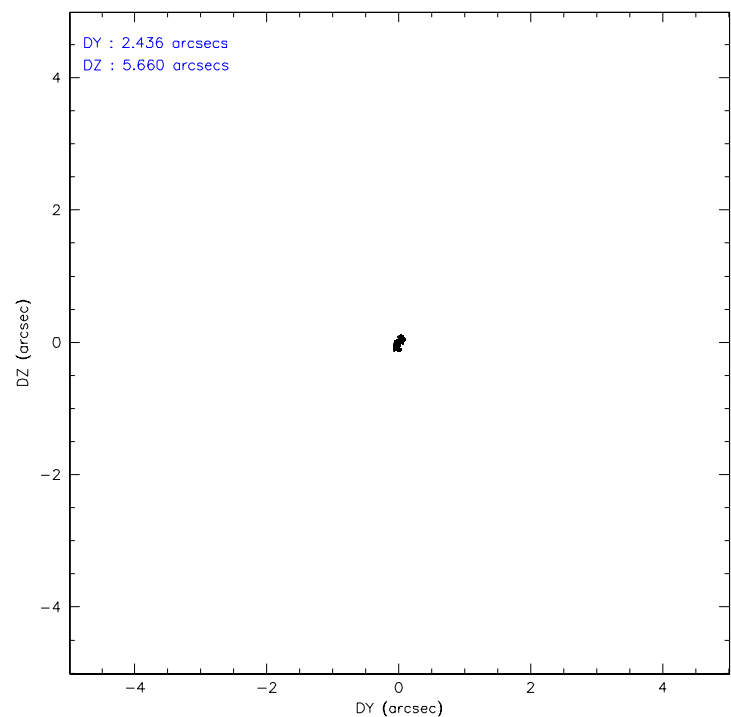
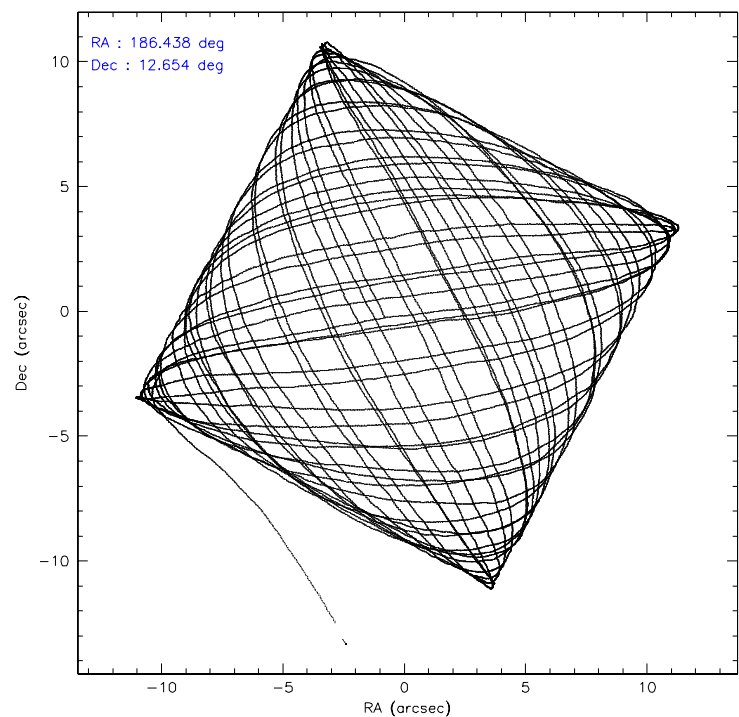
	ccd 2	ccd 3	ccd 5	ccd 6	ccd 7	ccd 8
level 1 events	141147	134843	189737	133221	180376	171398
rejected events	124329	114902	102561	114527	102179	131371
rejected %	88%	85%	54%	85%	56%	76%

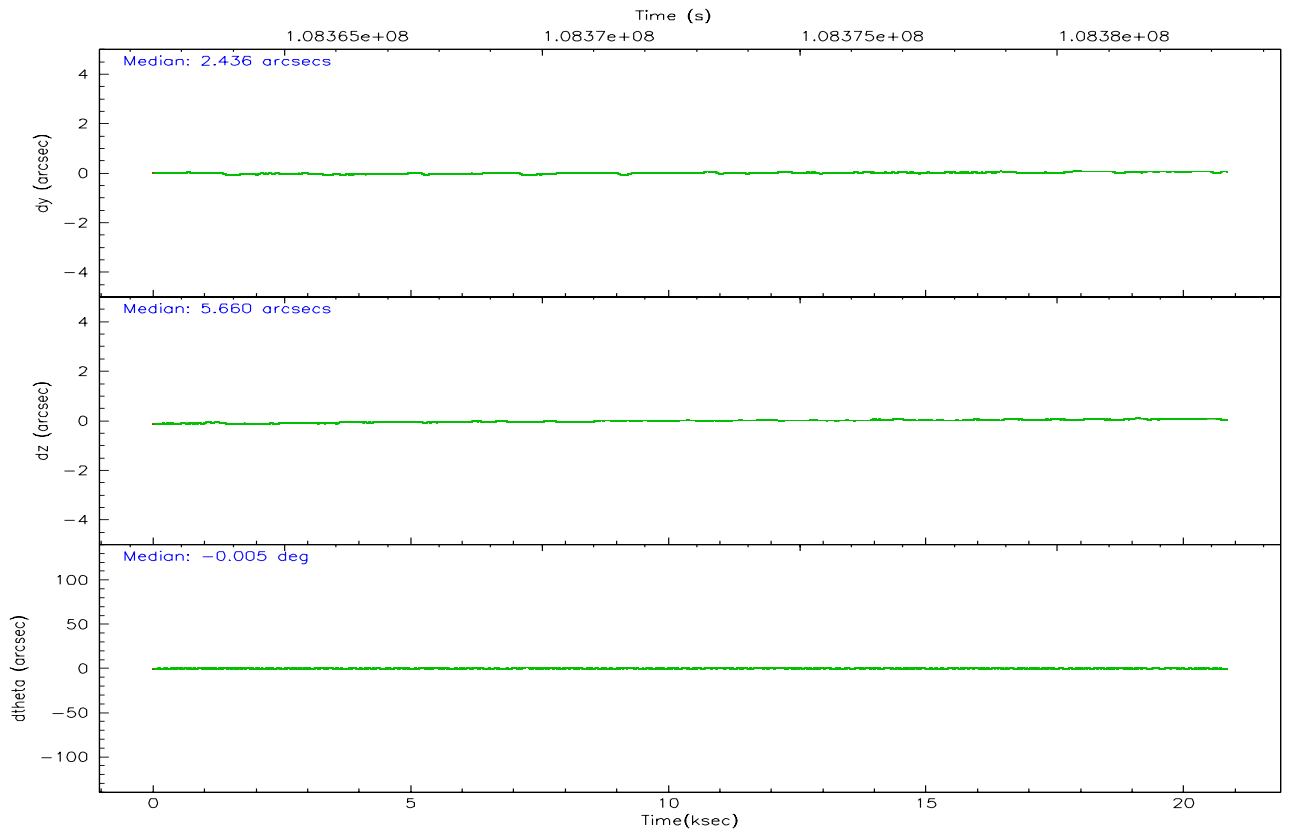
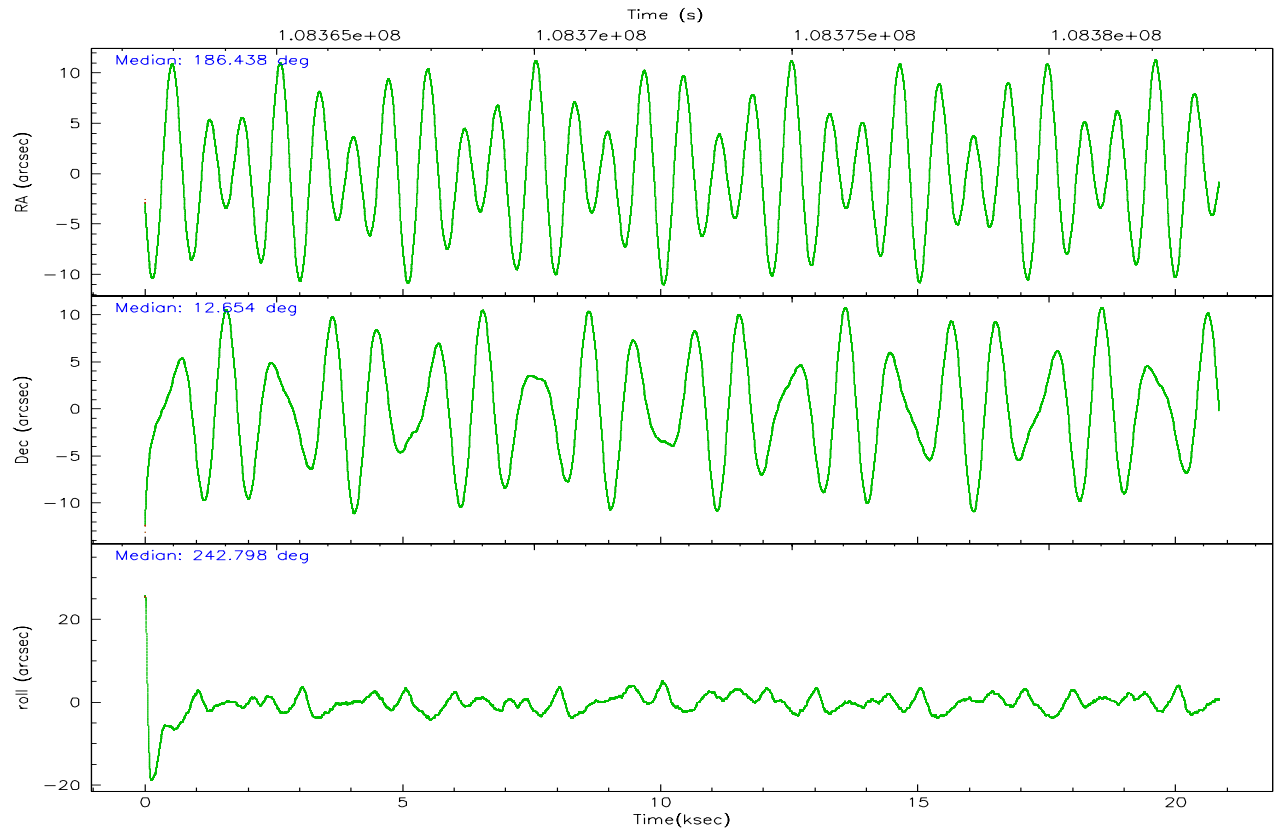
	ccd 2	ccd 3	ccd 5	ccd 6	ccd 7	ccd 8
grade 0 events	7914	10850	10907	9180	8461	16699
	5%	8%	5%	6%	4%	9%
grade 1 events	77	94	295	74	123	134
	0%	0%	0%	0%	0%	0%
grade 2 events	3402	3289	25987	3382	19417	7662
	2%	2%	13%	2%	10%	4%
grade 3 events	1409	1505	2181	1553	5061	3748
	0%	1%	1%	1%	2%	2%
grade 4 events	1365	1576	2020	1564	5042	3483
	0%	1%	1%	1%	2%	2%
grade 5 events	4684	5063	9103	5642	11612	7115
	3%	3%	4%	4%	6%	4%
grade 6 events	2736	2725	46118	3019	40238	8447
	1%	2%	24%	2%	22%	4%
grade 7 events	119560	109741	93126	108807	90422	124110
	84%	81%	49%	81%	50%	72%

2.2 Compared Parameters

Parameter	Planned	Actual	Parameter	Planned	Actual
Instrument	ACIS	ACIS	Obspar format version number	6	6
Detector	ACIS-235678	ACIS-235678	Obspar file type	PREDICTED	ACTUAL
Grating	NONE	NONE	Obspar update status	NONE	UPDATED
Data mode	VFAINT	VFAINT	Number of optional ACIS chips dropped	0	0
Observation mode	POINTING	POINTING	On-chip summing requested	N	N
Pointing RA	186.436830	186.438476132748	Subarray requested	NONE	NONE
Pointing Dec	12.681571	12.65434837466162	Alternating exposures requested	N	N
Pointing Roll	242.651223	242.8075158319625	Primary exposure time	0.000000	3.2
SIM focus pos (mm)	-0.684267	-0.6828225247311905			
SIM defocus (mm)	0	0.001444936568705701			
SIM translation stage pos (mm)	-190.132523	-190.1400660498719			
SIM translation stage offset (mm)	0	0.00754346686406393			
Observation start time	108363015.184000	108361864.5173			
Observation start date	2001-06-08T04:49:11	2001-06-08T04:31:04			
Observation end time	108383295.184000	108383826.68066			
Observation end date	2001-06-08T10:27:11	2001-06-08T10:37:06			
Read mode	TIMED	TIMED			

2.3 Aspect



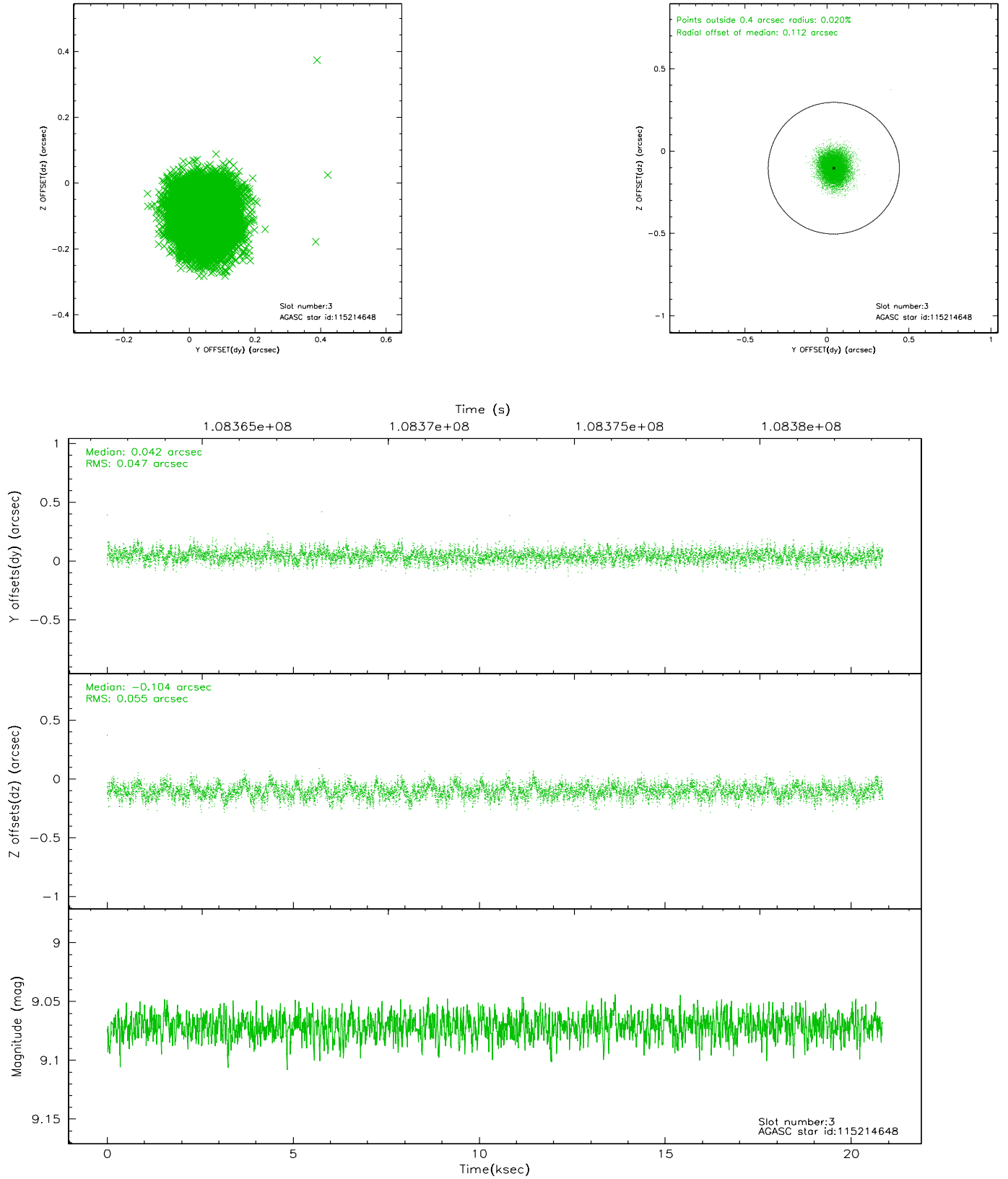


Slot Statistics

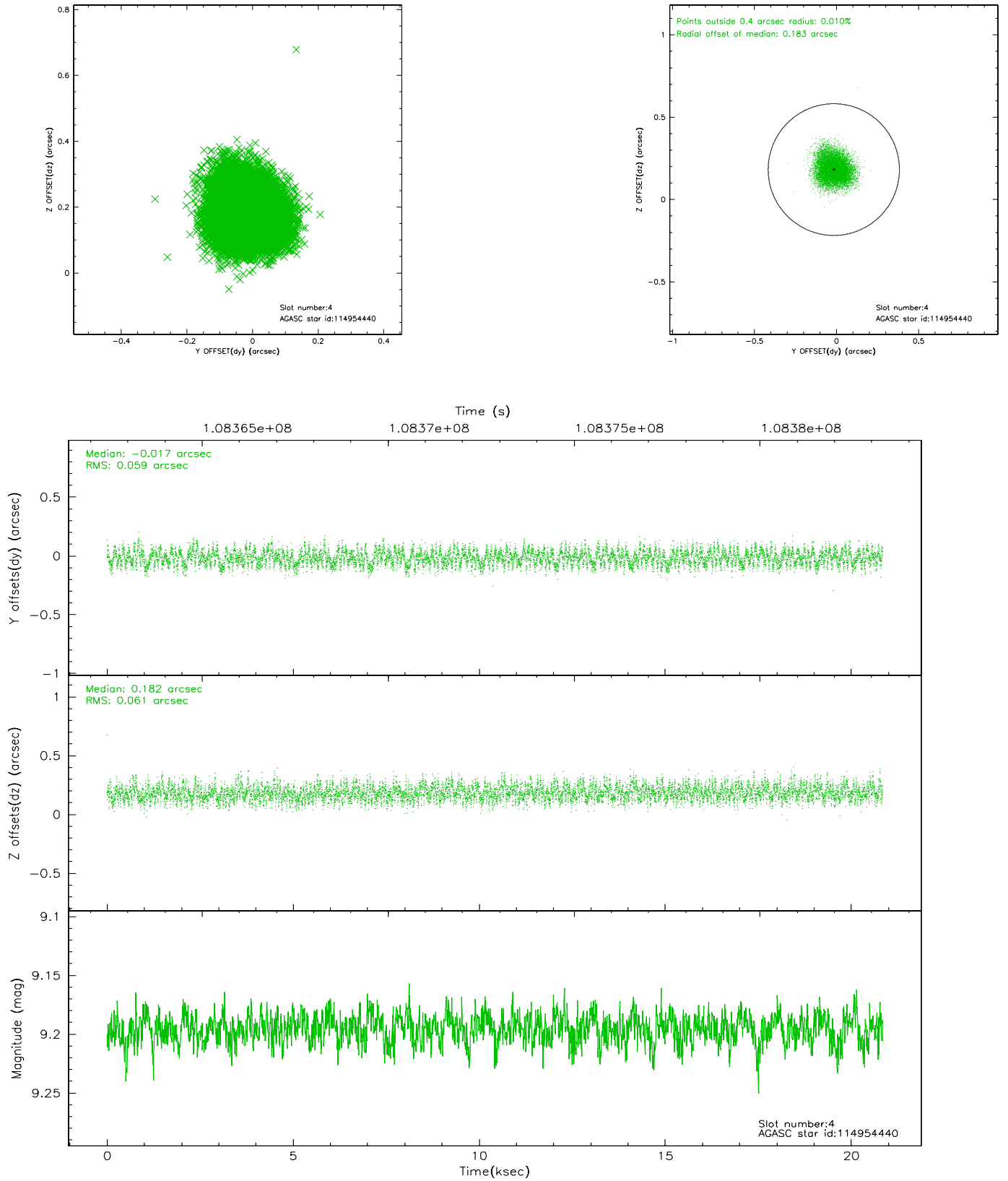
slot	status	id	mag	n_pts	med_dy	med_dz	dr1	dr2	ra	dec	mean_y	mean_z
0	FID	ACIS-S-2	7.11	5085	-0.027	0.022	0.006	0.010	0.000000	0.000000	-755.05	-1726.78
1	FID	ACIS-S-4	7.20	5085	-0.065	0.007	0.005	0.008	0.000000	0.000000	2158.07	181.59
2	FID	ACIS-S-5	7.24	5085	0.060	-0.020	0.006	0.010	0.000000	0.000000	-1807.63	175.33
3	GUIDE	115214648	9.07	10168	0.042	-0.104	0.078	0.125	185.771147	12.685188	1059.89	-2083.35
4	GUIDE	114954440	9.19	10167	-0.017	0.182	0.092	0.142	186.915066	12.219118	703.63	2259.56
5	GUIDE	115216184	9.65	10155	-0.018	-0.117	0.100	0.157	185.973150	12.580247	1071.22	-1279.14
6	GUIDE	115215984	9.99	10161	-0.032	-0.059	0.131	0.214	186.134733	12.875031	-132.18	-1261.58
7	GUIDE	114957008	8.24	10169	0.032	0.095	0.074	0.119	186.894794	12.099160	1119.77	2395.19

2.4 Star Slots

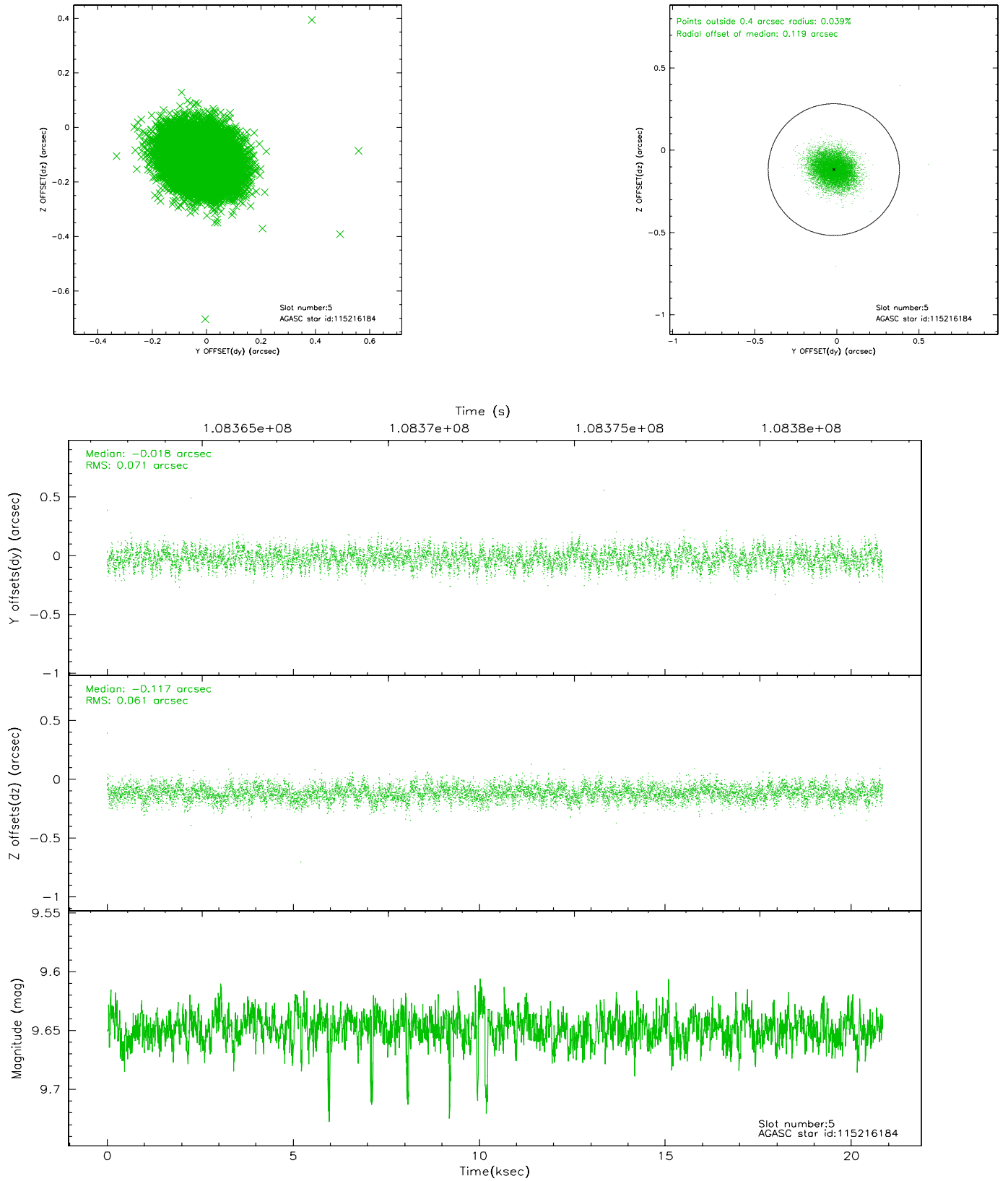
2.4.1 Slot 3



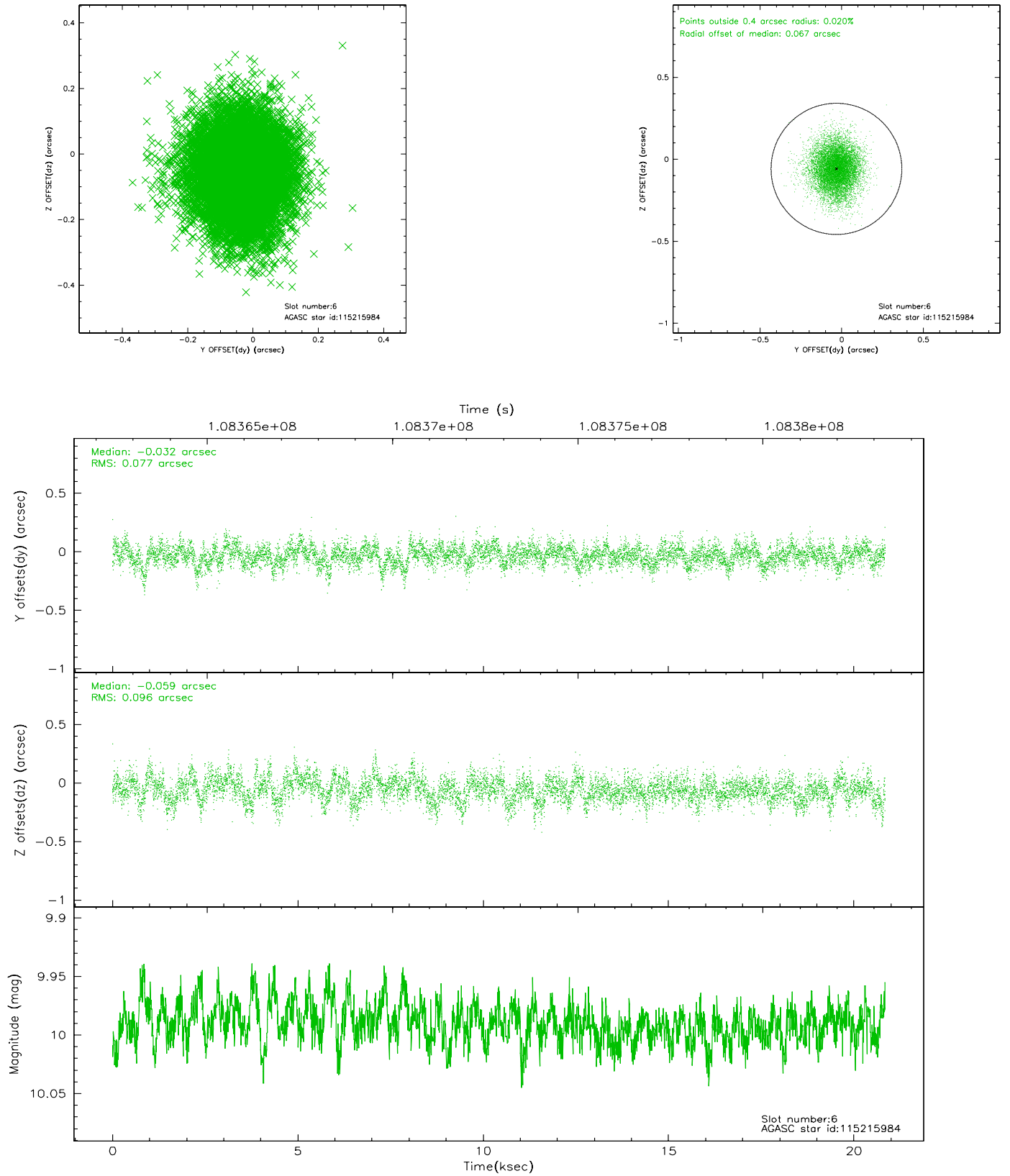
2.4.2 Slot 4



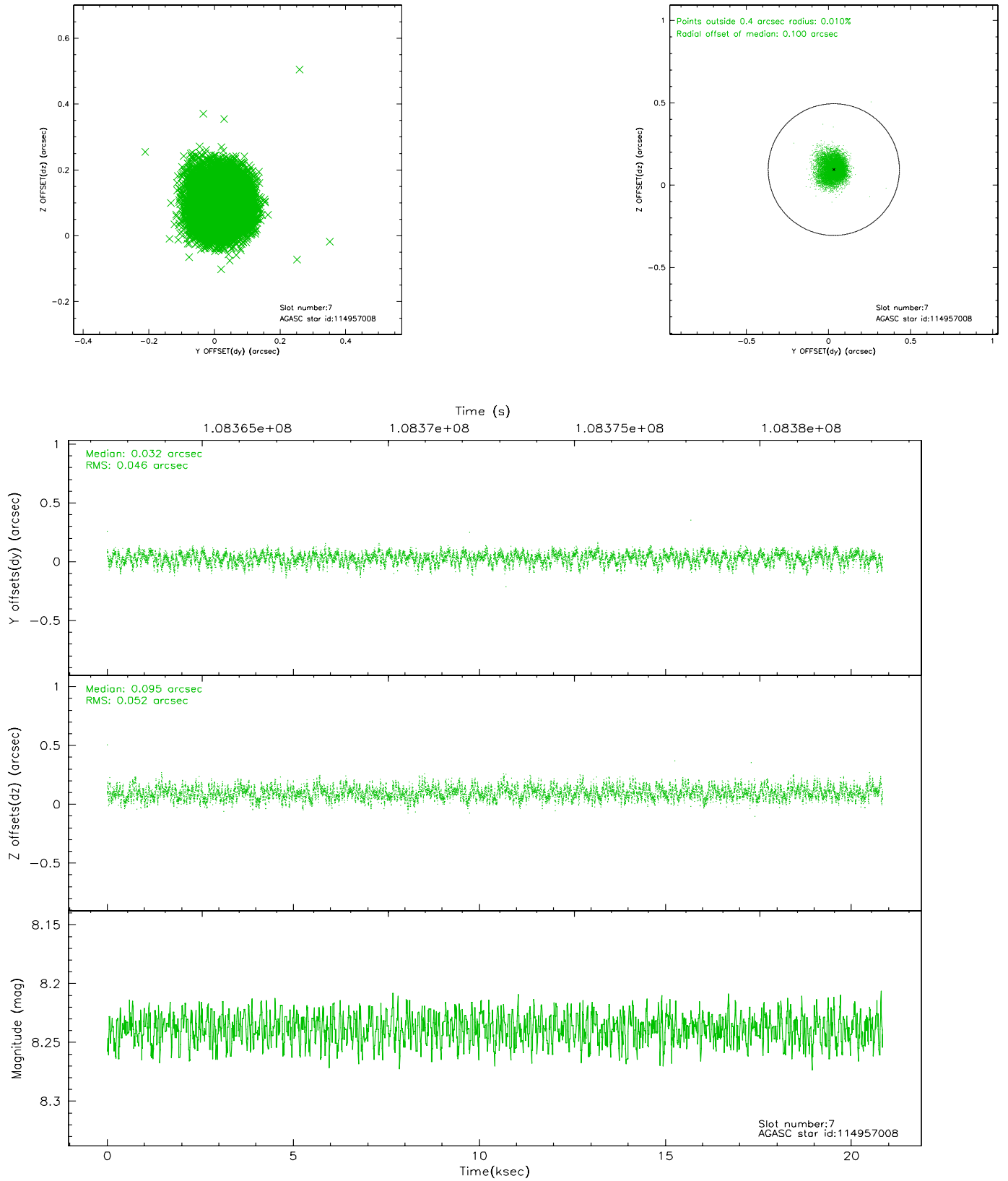
2.4.3 Slot 5



2.4.4 Slot 6

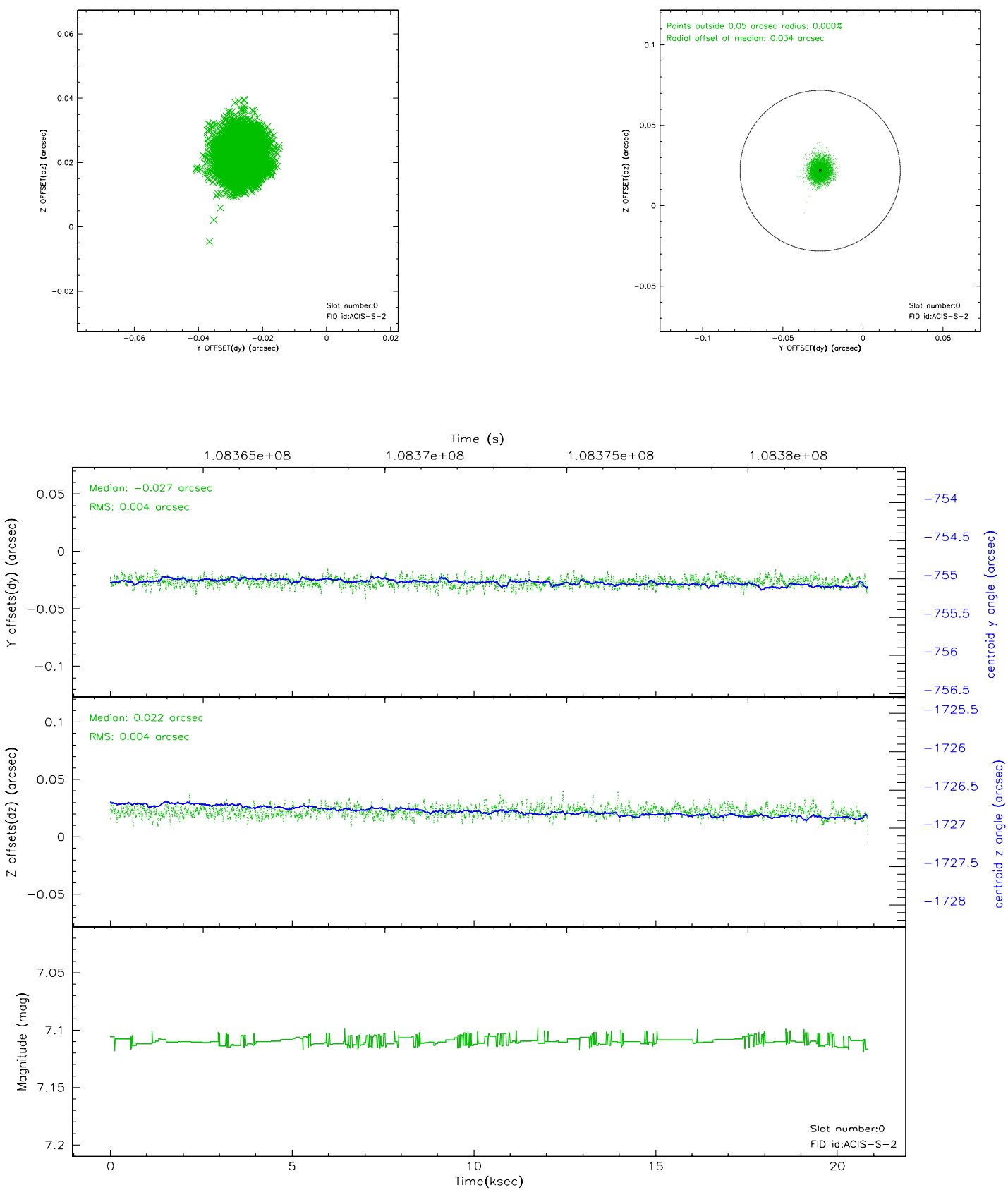


2.4.5 Slot 7

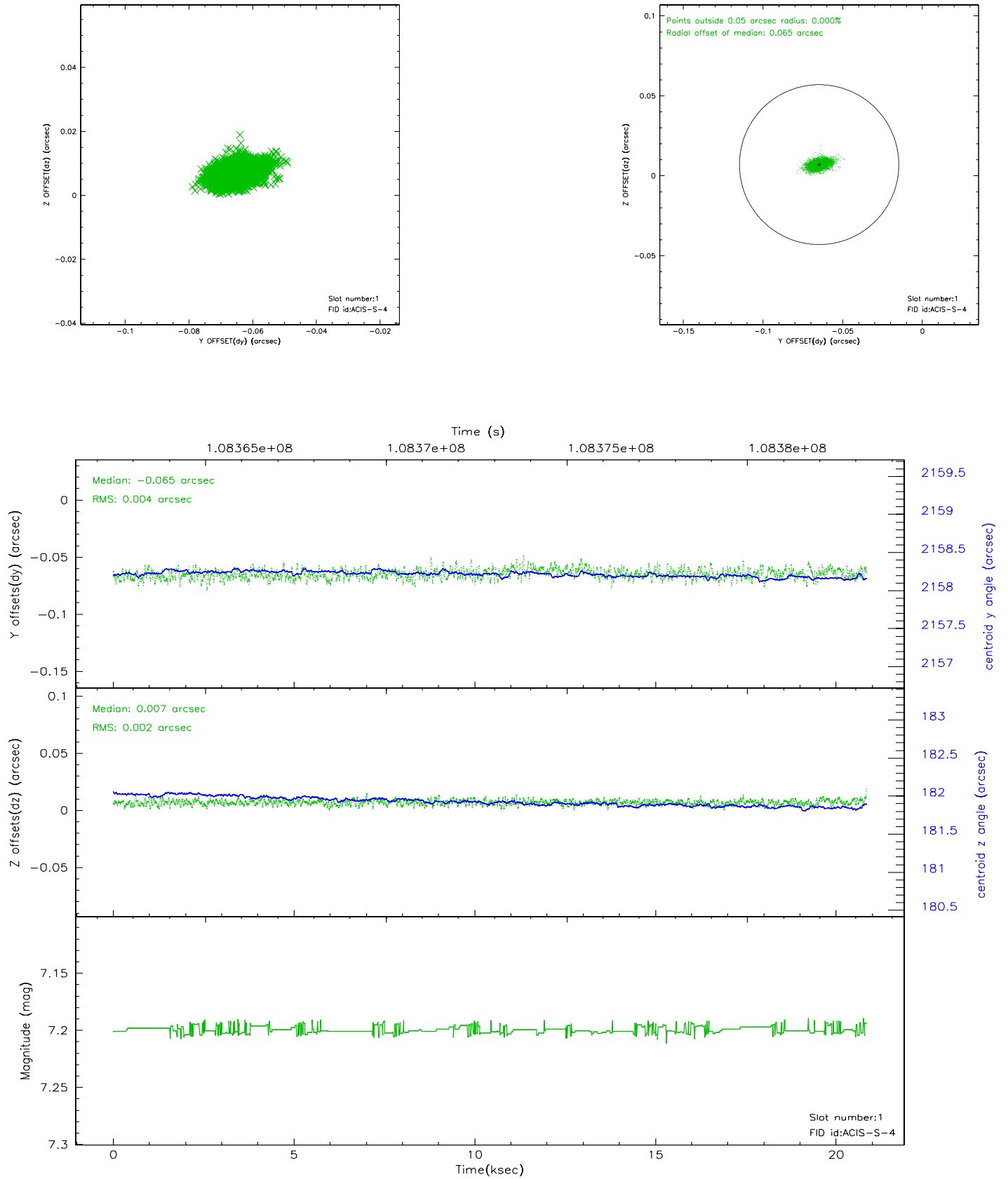


2.5 FID Slots

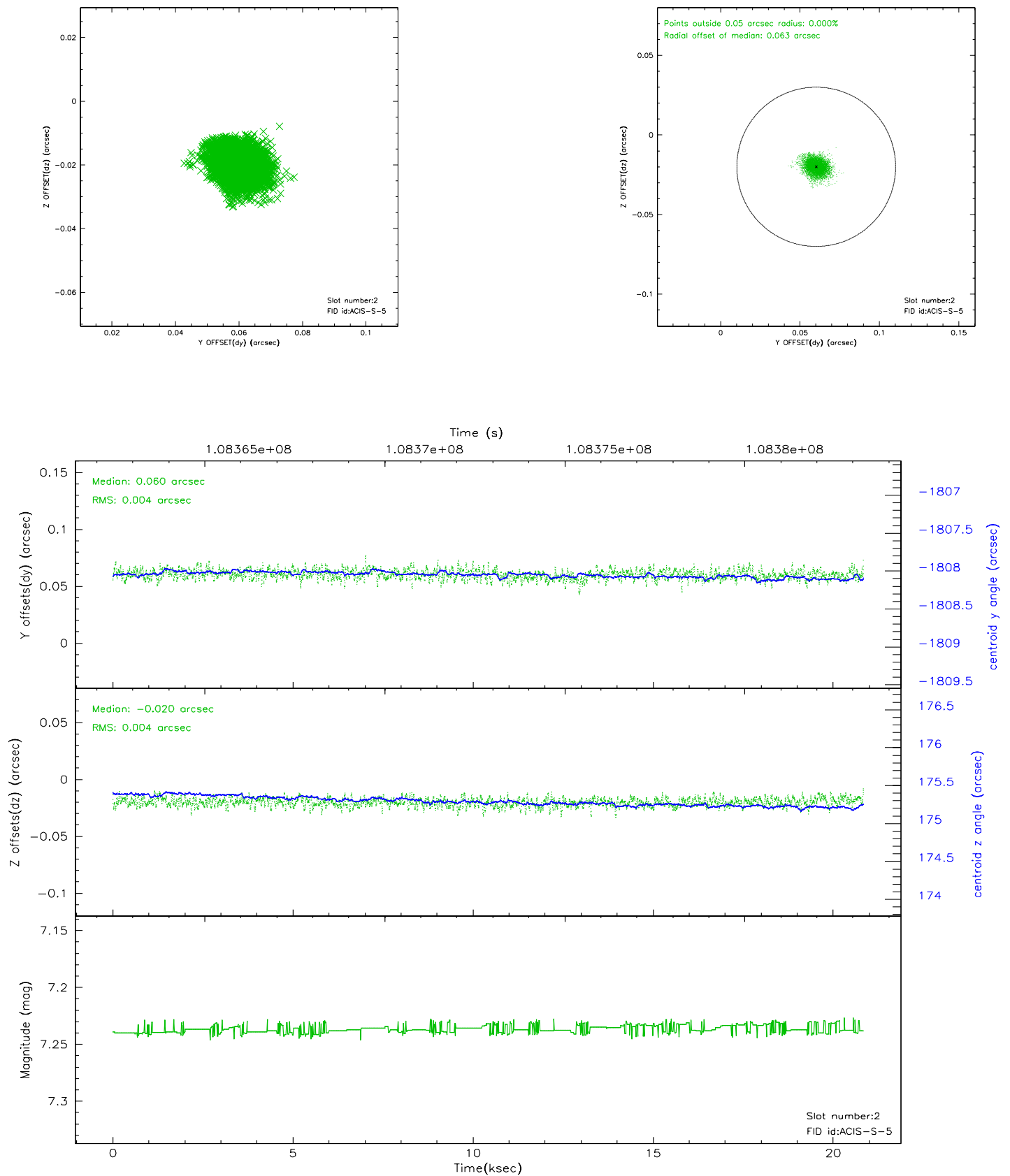
2.5.1 Slot 0



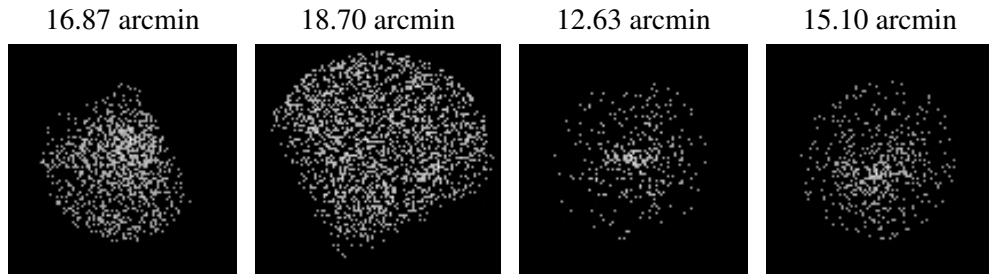
2.5.2 Slot 1



2.5.3 Slot 2



3 Point Sources



A Summary

A.1 Status

V&V Scientist	Jen Lauer
V&V Date (YYYY-MM-DD)	2006.11.28
V&V Edition	1
V&V Disposition and Status	OK
V&V Charge Time	20.227

A.2 Comments