

V&V Reference Report

L2 ASCDS Version : 7.6.9

Observation 1618 - L2 Version 001
Chandra X-Ray Center

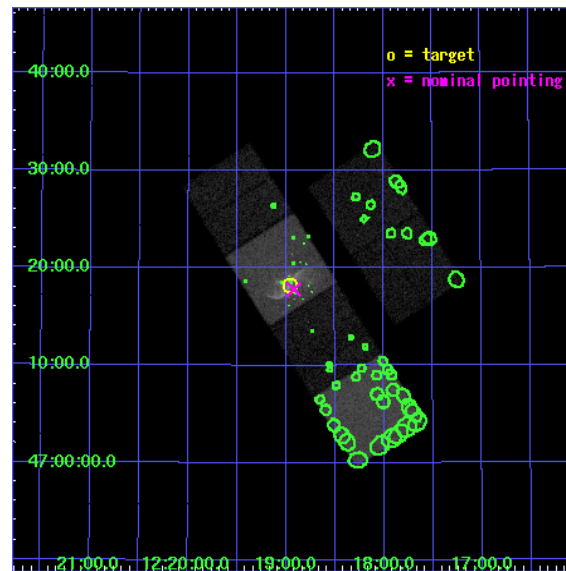
L2 Processing Date : Nov 23 2006

Contents

1	Front	2
2	OBI	3
2.1	OBI	3
2.1.1	Images	3
2.1.2	Bias	3
2.1.3	Parameters	4
2.1.4	Events	4
2.2	Compared Parameters	5
2.3	Aspect	6
2.4	Star Slots	9
2.4.1	Slot 3	9
2.4.2	Slot 4	10
2.4.3	Slot 5	11
2.4.4	Slot 6	12
2.4.5	Slot 7	13
2.5	FID Slots	14
2.5.1	Slot 0	14
2.5.2	Slot 1	15
2.5.3	Slot 2	16
3	Point Sources	17
A	Summary	18
A.1	Status	18
A.2	Comments	18

1 Front

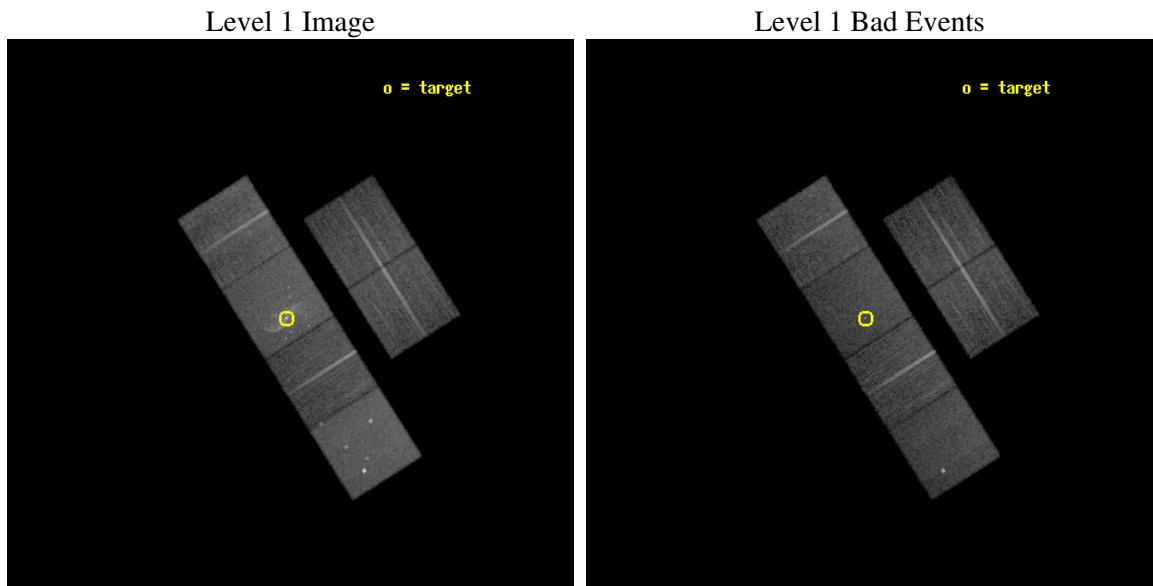
seq_num	700234
obs_id	1618
title	STUDIES OF RADIO JETS AND THE NARROW LINE REGIONS OF ACTIVE GALAXIES
observer	Prof. Andrew Wilson
object	NGC4258
dtcycle	0
cycle	P
ra_targ	184.739583
dec_targ	47.303944
ra_nom	184.72980855972
dec_nom	47.296759458961
roll_nom	237.60920664661
revision	2
ontime	21209.559059501
livetime	20940.990851826
ontime2	21209.559059501
ontime3	21209.559059501
ontime5	21212.800019756
ontime6	21209.559079438
ontime7	21209.559059501
ontime8	21209.559089437
l2events	216179



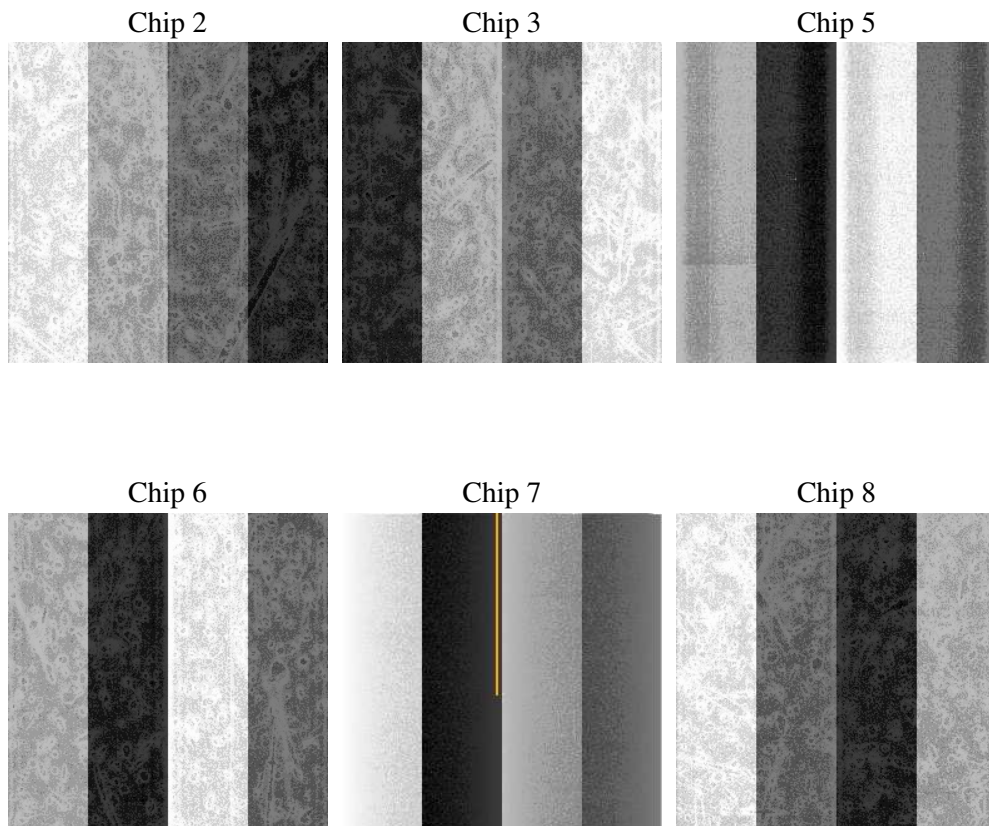
2 OBI

2.1 OBI

2.1.1 Images



2.1.2 Bias



2.1.3 Parameters

obi_num	0
ascdsver	7.6.9
caldsver	3.2.4
date	2006-11-23T05:18:44
revision	2

sched_exp_time	21260.000000
ontime	21215.576386258
ontime2	21215.576386258
ontime3	21215.576386258
ontime5	21218.817376435
ontime6	21215.576406196
ontime7	21215.576386258
ontime8	21215.576416194
l1events	931748

2.1.4 Events

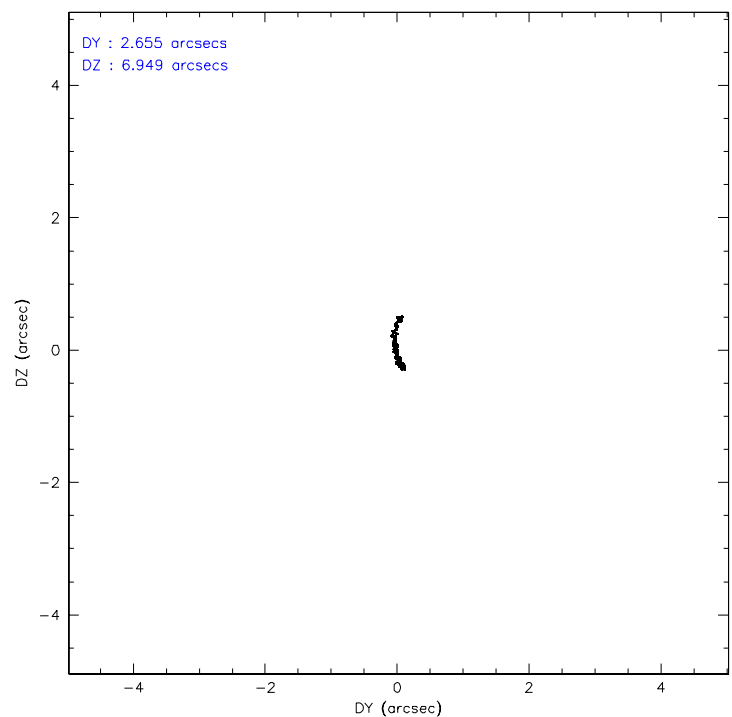
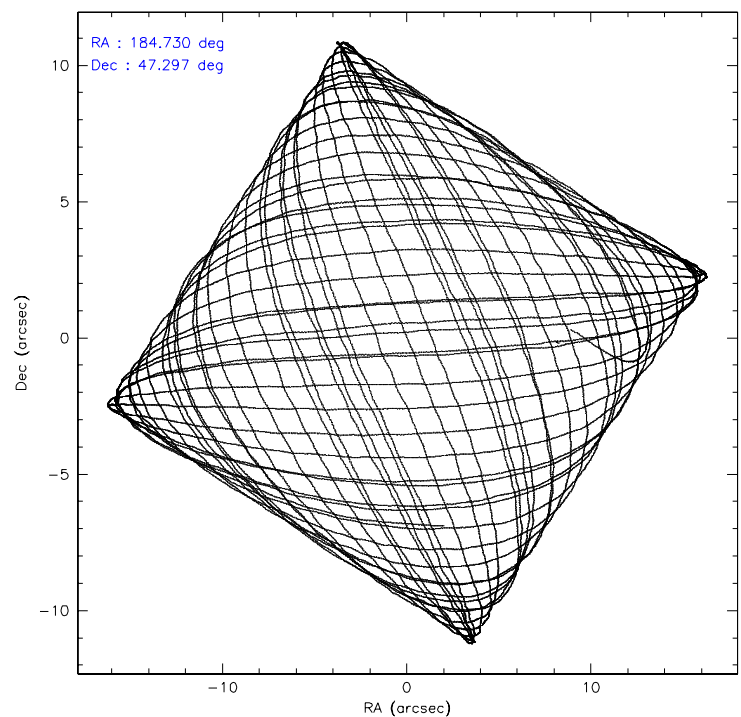
	ccd 2	ccd 3	ccd 5	ccd 6	ccd 7	ccd 8
level 1 events	135542	125595	188019	130806	191233	160553
rejected events	120812	110862	102805	115606	102766	127353
rejected %	89%	88%	54%	88%	53%	79%

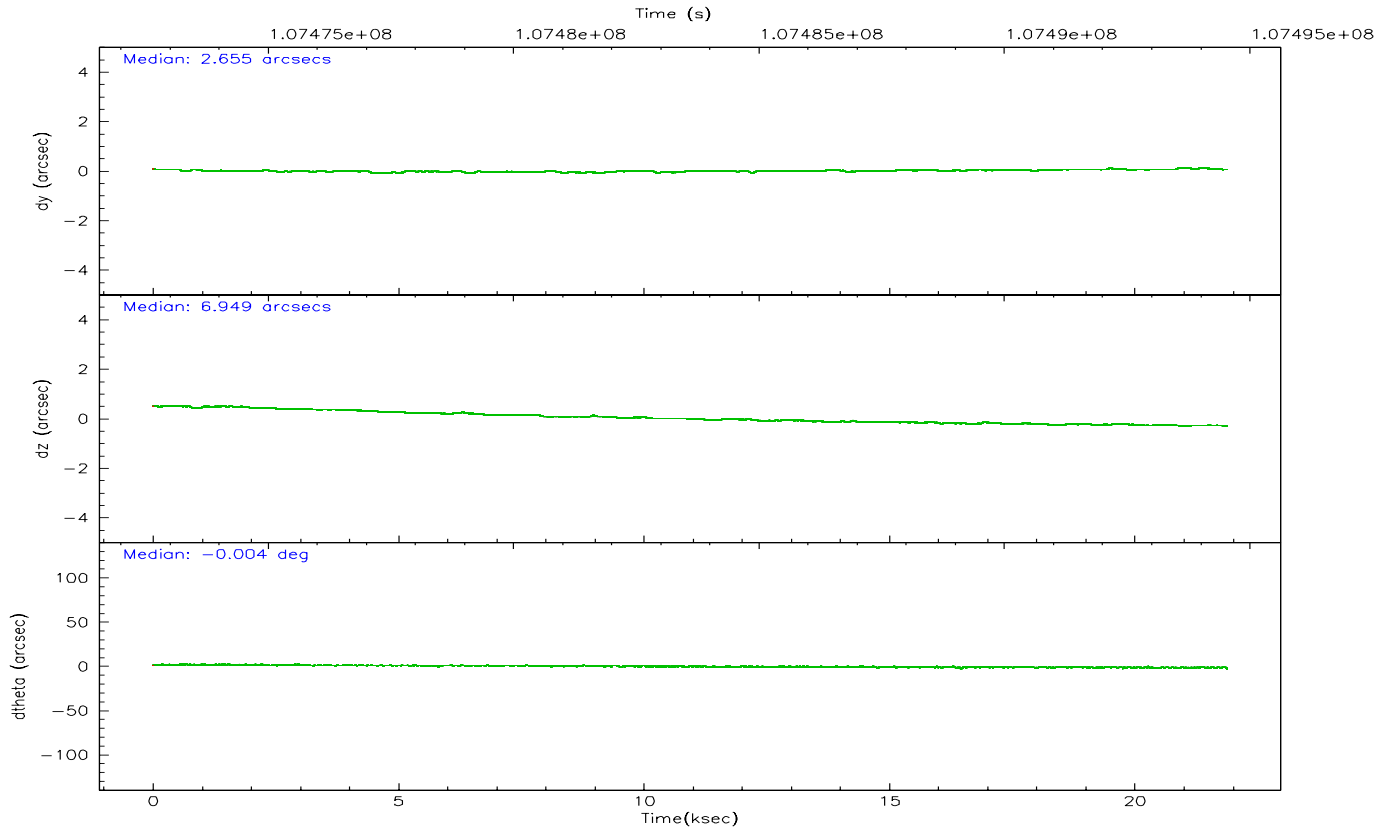
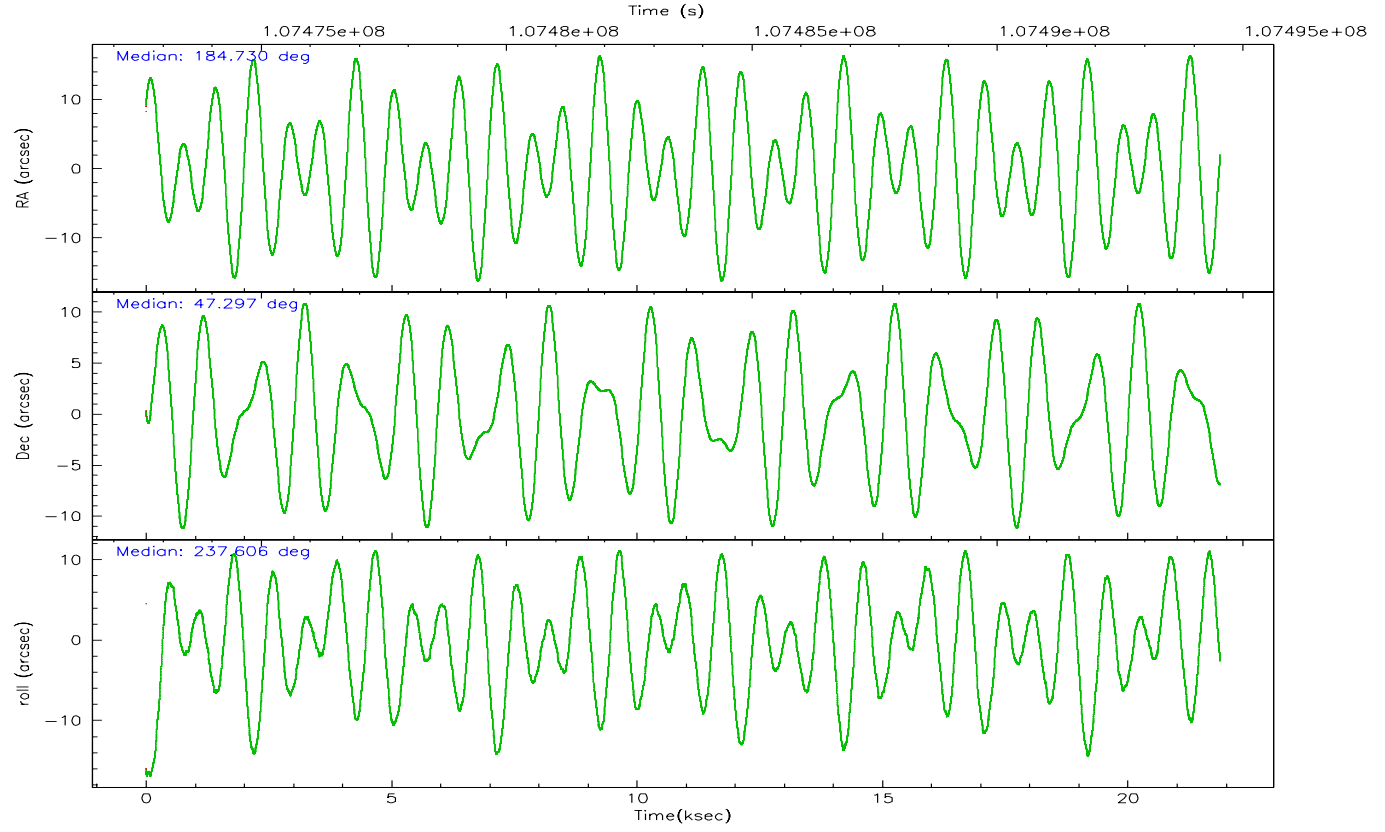
	ccd 2	ccd 3	ccd 5	ccd 6	ccd 7	ccd 8
grade 0 events	6216	6510	9396	6211	12240	10674
	4%	5%	4%	4%	6%	6%
grade 1 events	53	69	2114	51	124	72
	0%	0%	1%	0%	0%	0%
grade 2 events	3251	2930	26416	3040	22149	7258
	2%	2%	14%	2%	11%	4%
grade 3 events	1356	1349	1979	1481	6137	3374
	1%	1%	1%	1%	3%	2%
grade 4 events	1345	1371	1905	1489	5990	3140
	0%	1%	1%	1%	3%	1%
grade 5 events	4494	5040	8823	5461	11700	6935
	3%	4%	4%	4%	6%	4%
grade 6 events	2569	2573	45548	2982	41978	8756
	1%	2%	24%	2%	21%	5%
grade 7 events	116258	105753	91838	110091	90915	120344
	85%	84%	48%	84%	47%	74%

2.2 Compared Parameters

Parameter	Planned	Actual	Parameter	Planned	Actual
Instrument	ACIS	ACIS	Obspar format version number	6	6
Detector	ACIS-235678	ACIS-235678	Obspar file type	PREDICTED	ACTUAL
Grating	NONE	NONE	Obspar update status	NONE	UPDATED
Data mode	VFAINT	VFAINT	Number of optional ACIS chips dropped	0	0
Observation mode	POINTING	POINTING	On-chip summing requested	N	N
Pointing RA	184.731091	184.7298085597186	Subarray requested	NONE	NONE
Pointing Dec	47.324033	47.29675945896094	Alternating exposures requested	N	N
Pointing Roll	237.451636	237.6092066466138	Primary exposure time	0.000000	3.2
SIM focus pos (mm)	-0.684267	-0.6828225247311905			
SIM defocus (mm)	0	0.001444936568705701			
SIM translation stage pos (mm)	-190.132523	-190.1400660498719			
SIM translation stage offset (mm)	0	0.00754346686406393			
Observation start time	107473274.184000	107472104.00765			
Observation start date	2001-05-28T21:40:10	2001-05-28T21:21:44			
Observation end time	107494534.184000	107494667.84603			
Observation end date	2001-05-29T03:34:30	2001-05-29T03:37:47			
Read mode	TIMED	TIMED			

2.3 Aspect



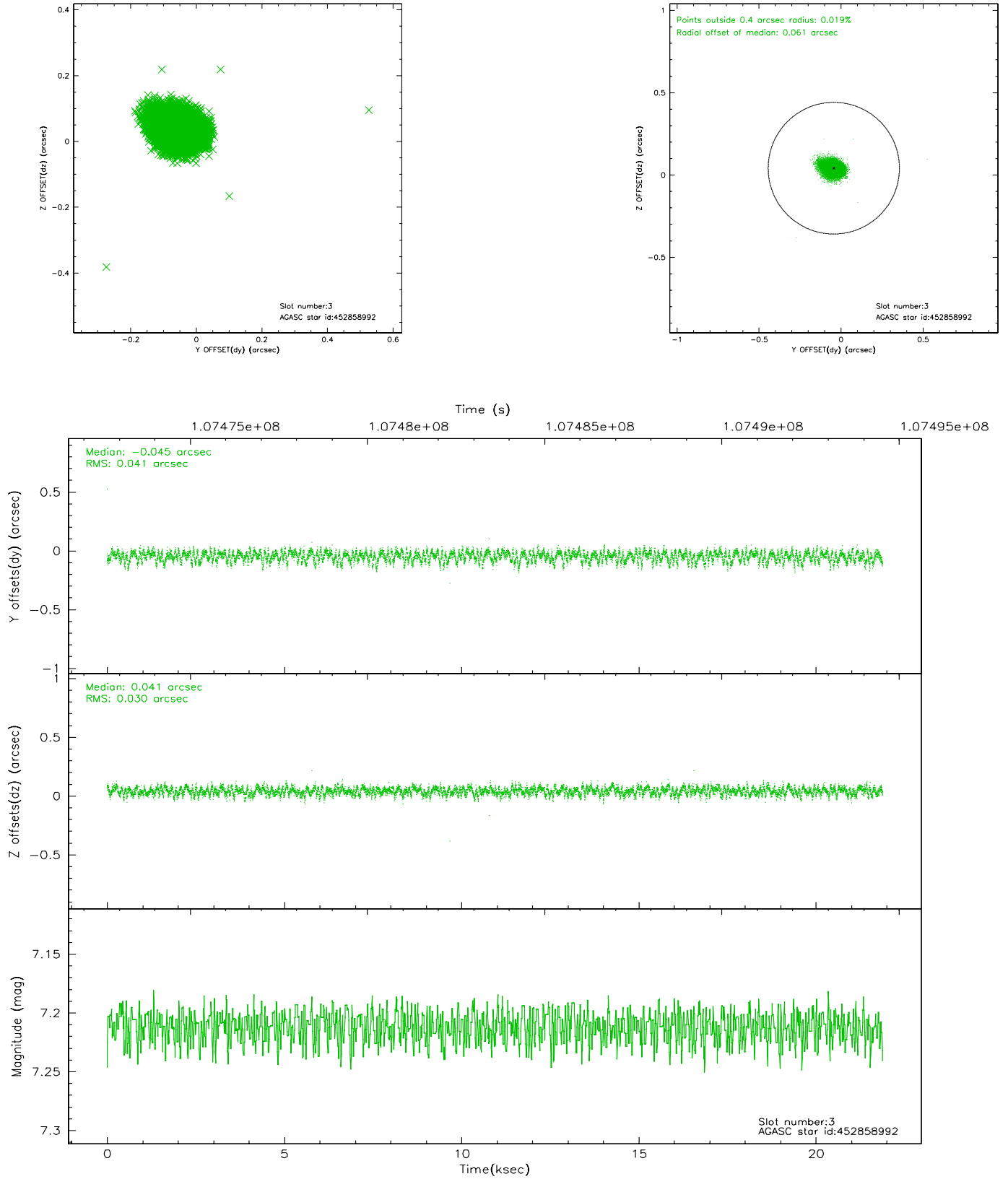


Slot Statistics

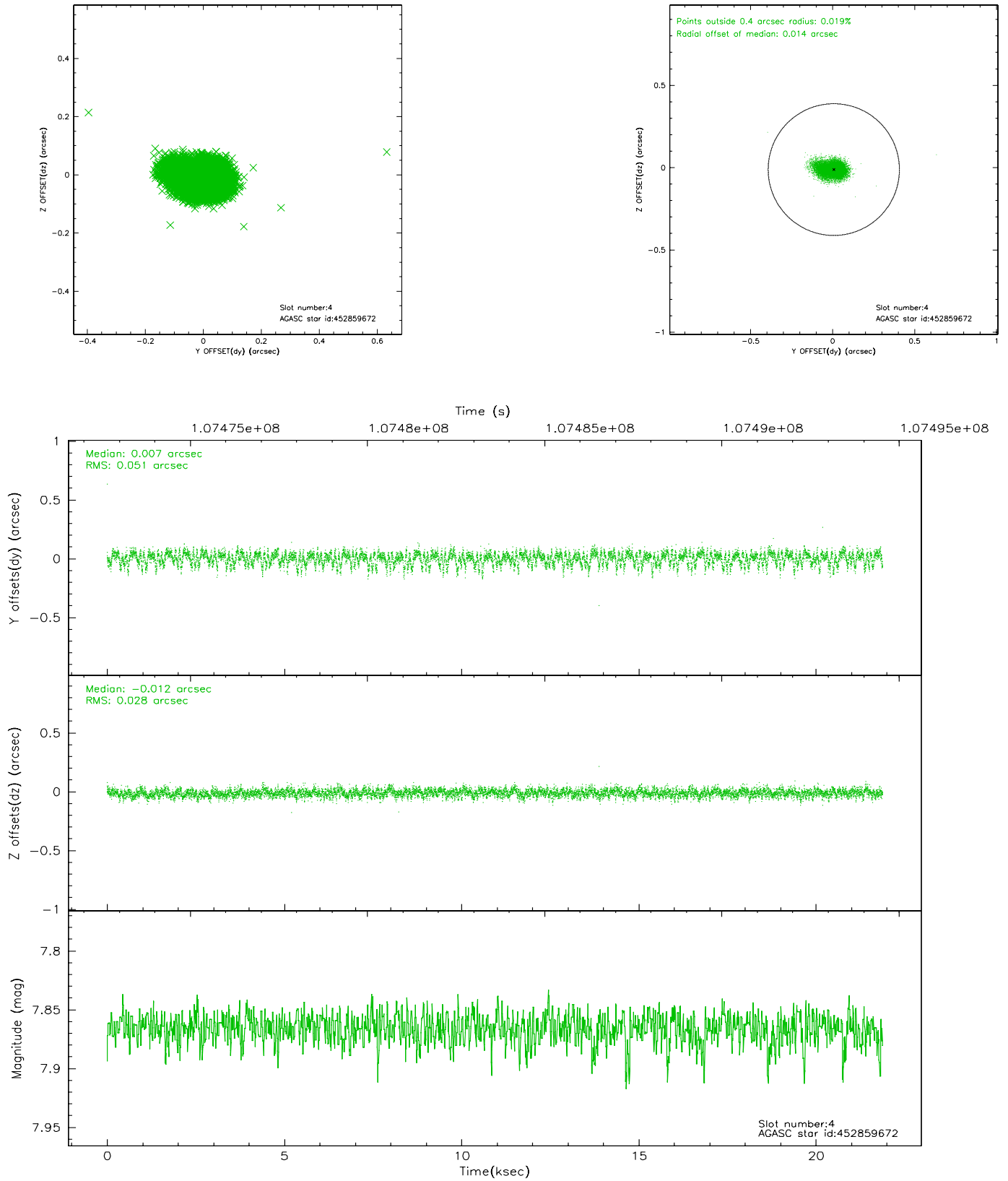
slot	status	id	mag	n_pts	med_dy	med_dz	dr1	dr2	ra	dec	mean_y	mean_z
0	FID	ACIS-S-2	7.12	5337	-0.004	0.017	0.009	0.015	0.000000	0.000000	-755.29	-1728.15
1	FID	ACIS-S-4	7.20	5334	-0.083	-0.002	0.008	0.013	0.000000	0.000000	2157.82	180.17
2	FID	ACIS-S-5	7.24	5334	0.056	-0.006	0.007	0.012	0.000000	0.000000	-1807.88	173.99
3	GUIDE	452858992	7.21	10668	-0.045	0.041	0.053	0.087	183.815161	47.115501	1829.01	-1494.10
4	GUIDE	452859672	7.87	10672	0.007	-0.012	0.060	0.105	183.661987	47.013592	2339.02	-1620.00
5	GUIDE	452858496	8.69	10671	0.219	-0.121	0.101	0.167	183.591783	47.048083	2324.35	-1831.99
6	GUIDE	452856552	8.65	10673	-0.187	0.056	0.066	0.106	184.964211	47.802867	-1757.00	-452.52
7	GUIDE	452859952	8.91	10671	0.006	0.037	0.063	0.104	183.979507	47.127047	1580.63	-1174.50

2.4 Star Slots

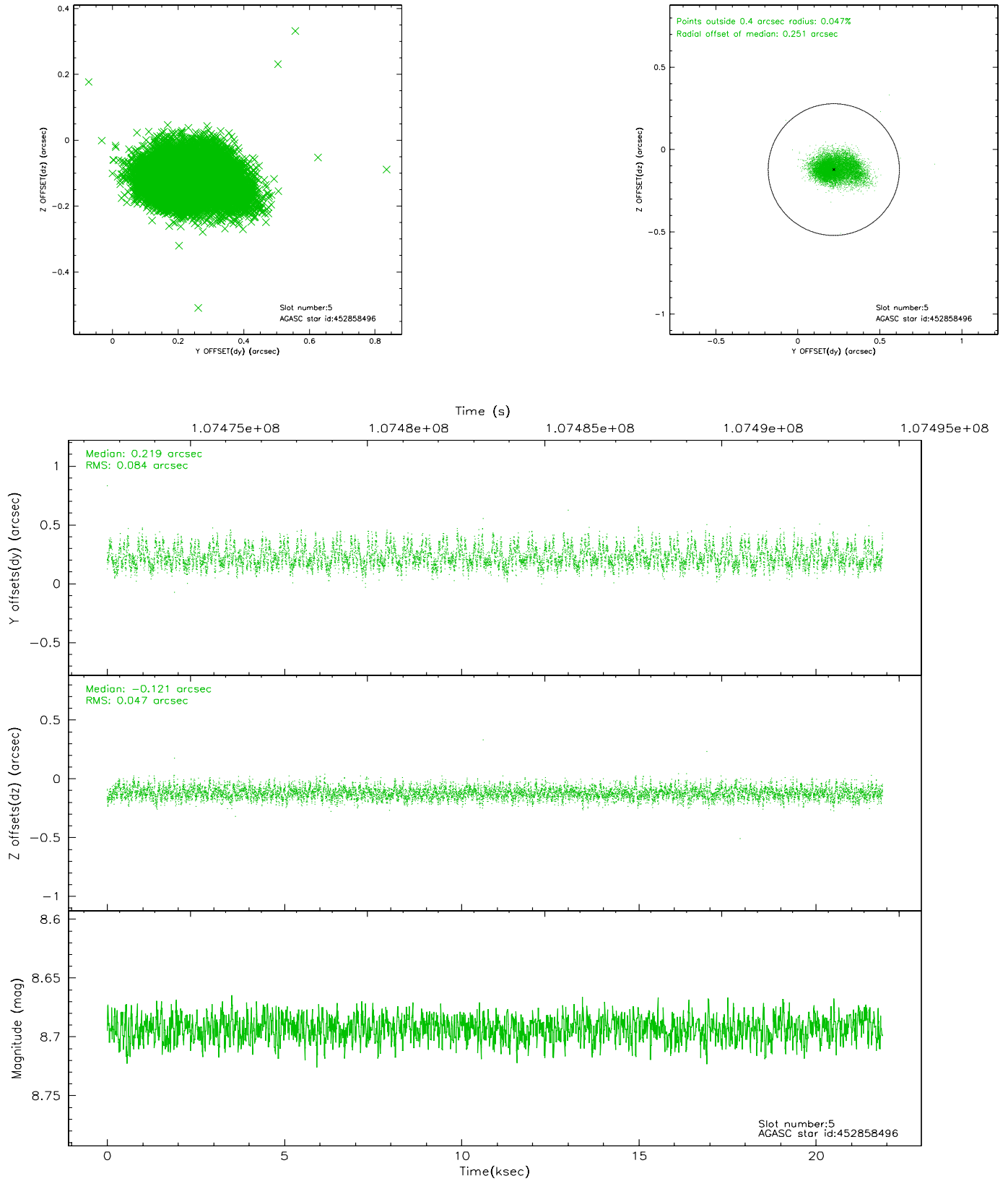
2.4.1 Slot 3



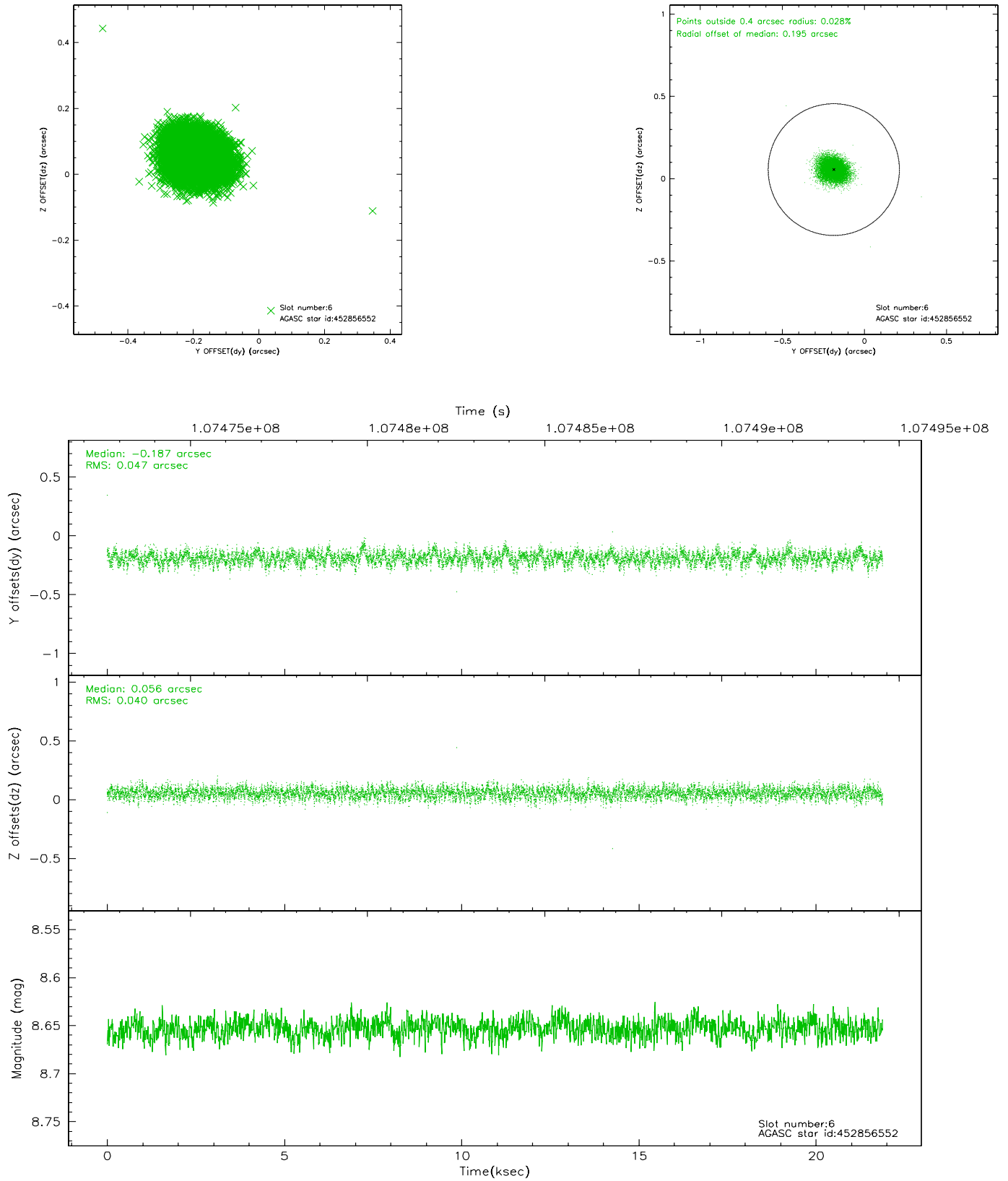
2.4.2 Slot 4



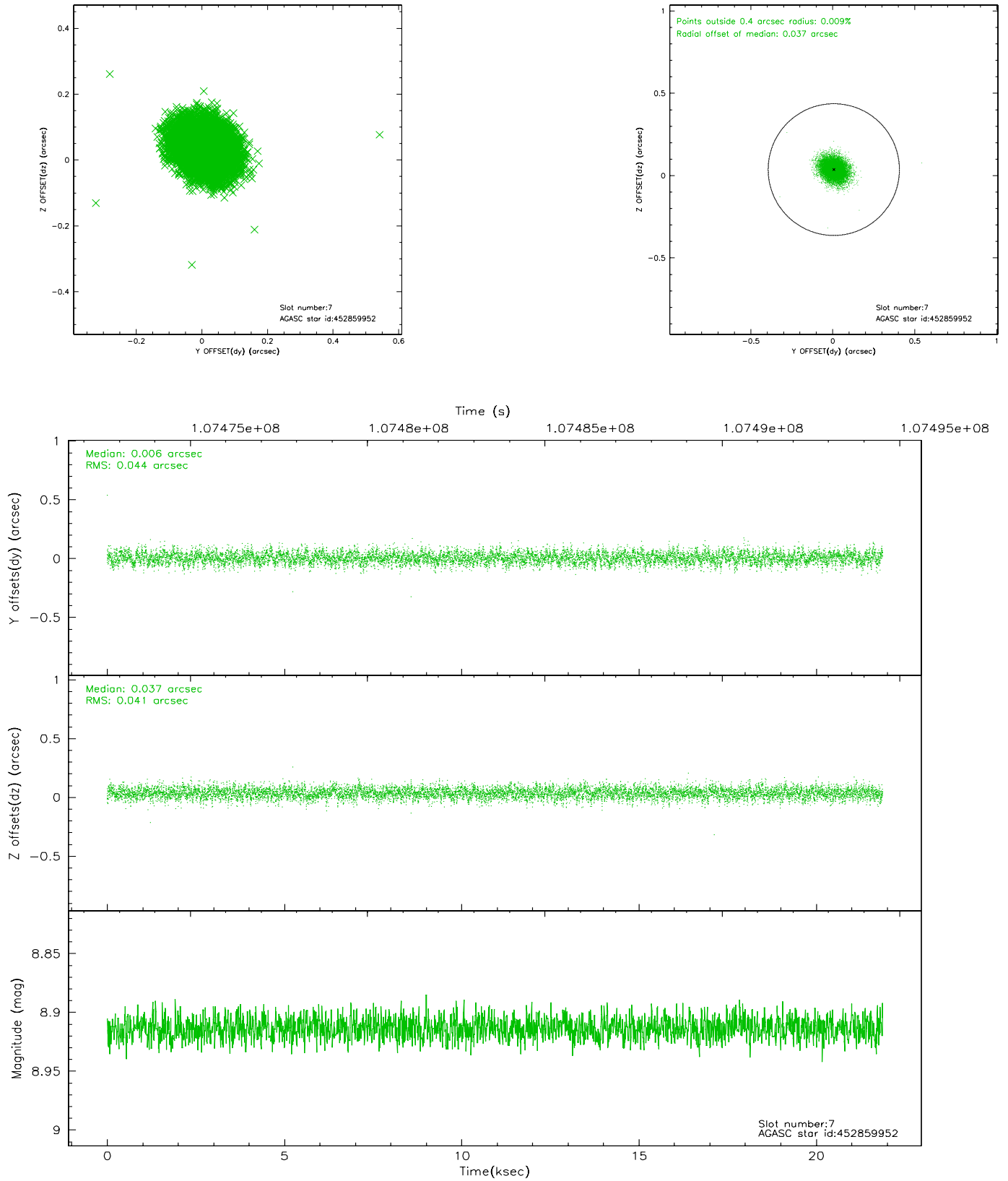
2.4.3 Slot 5



2.4.4 Slot 6

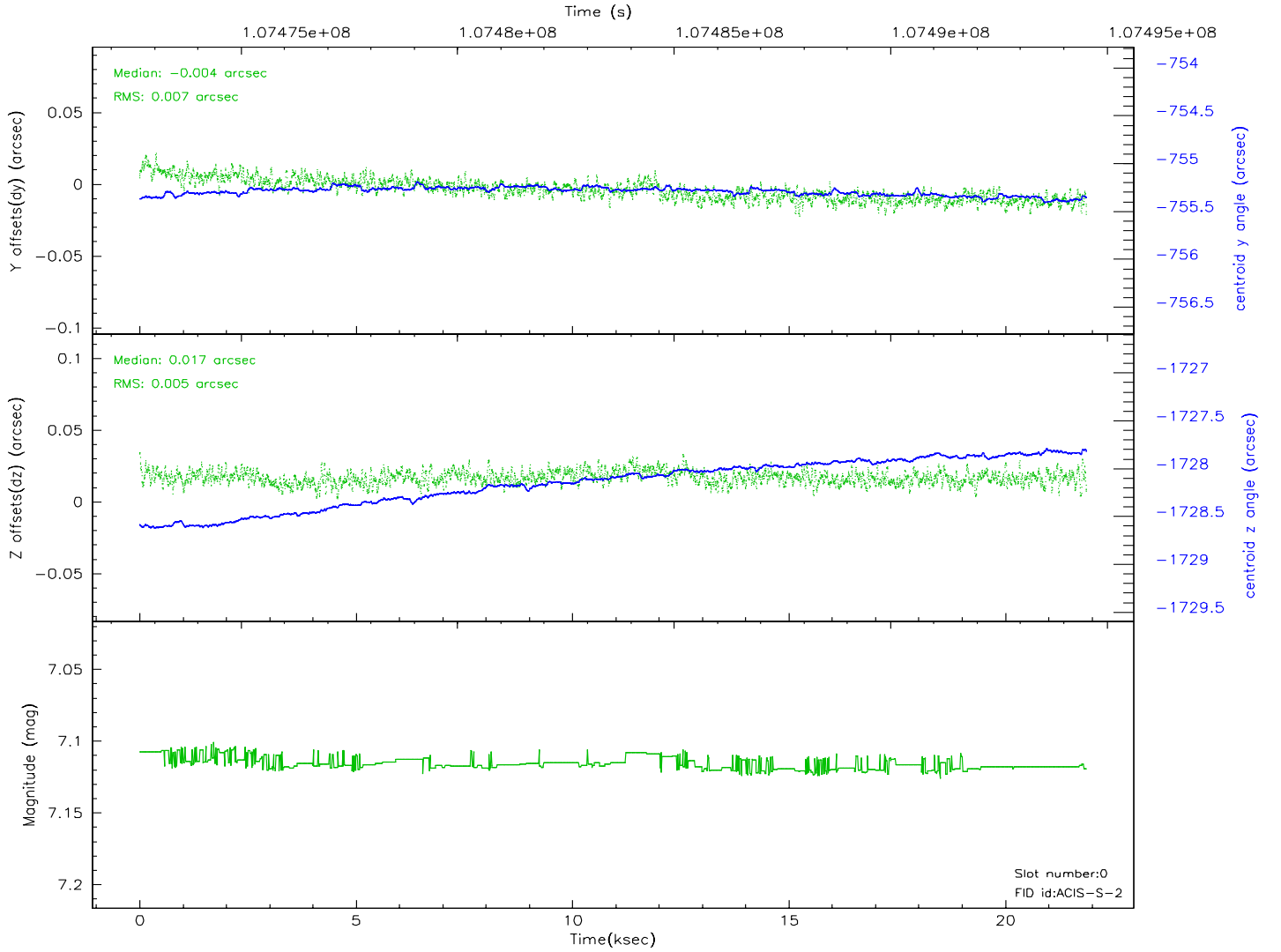
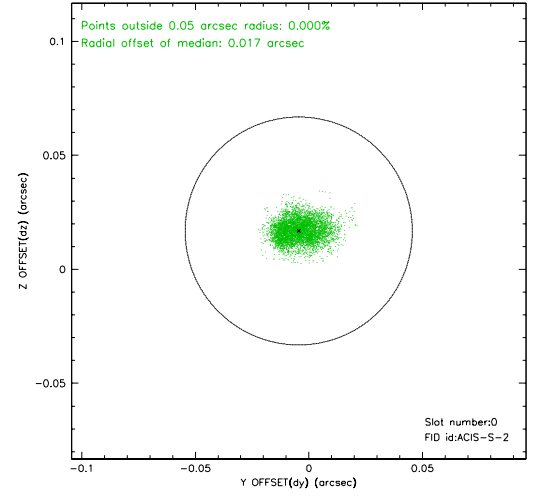
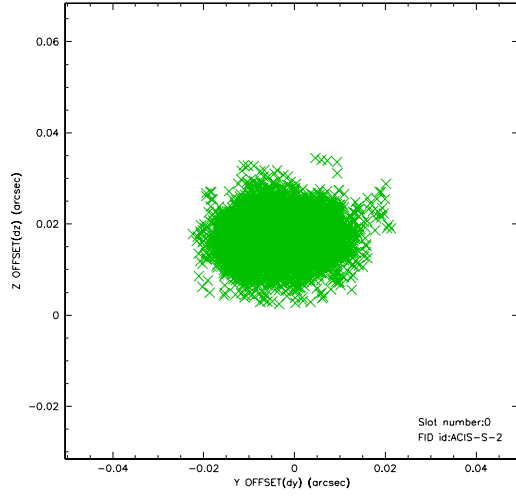


2.4.5 Slot 7

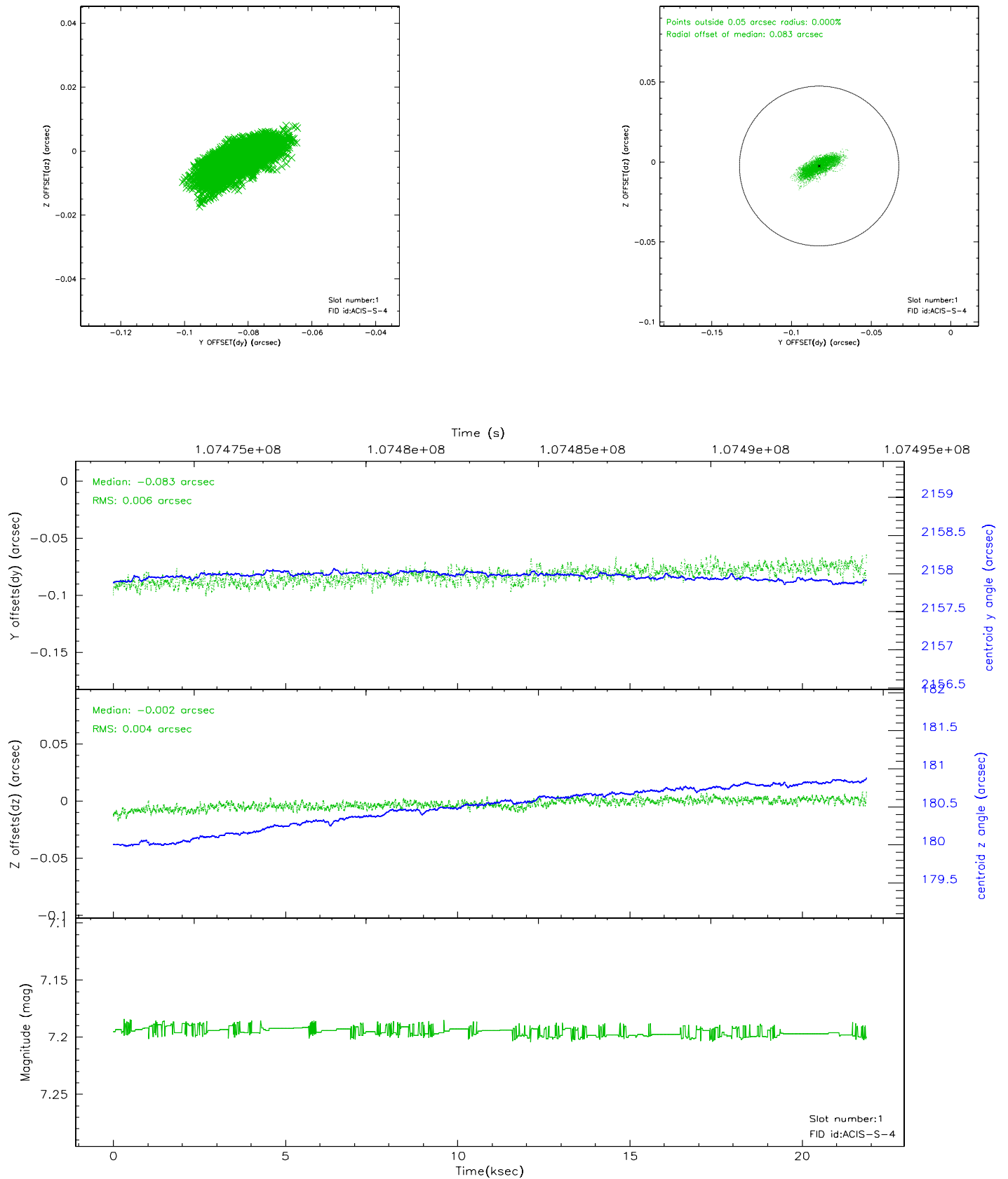


2.5 FID Slots

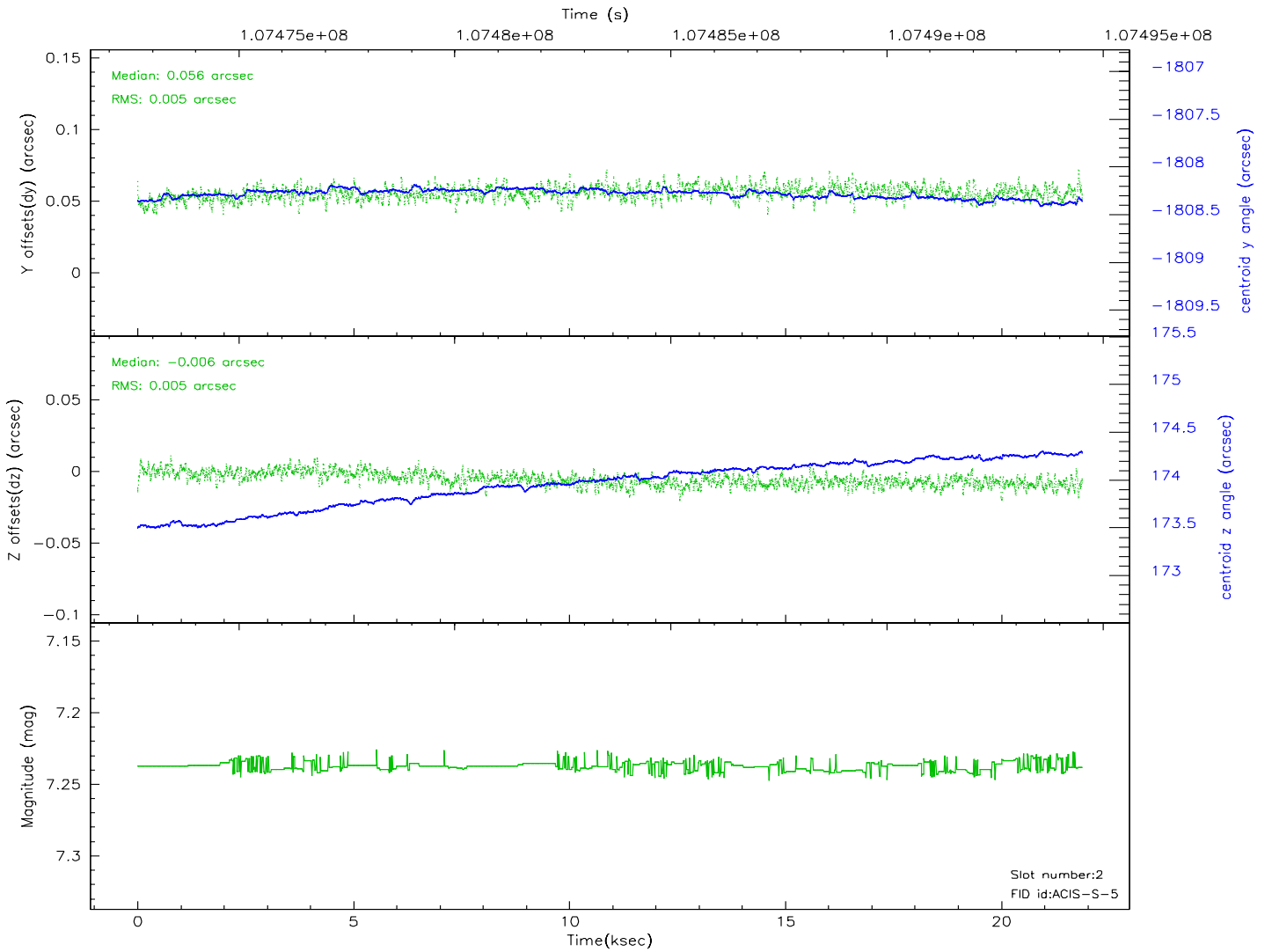
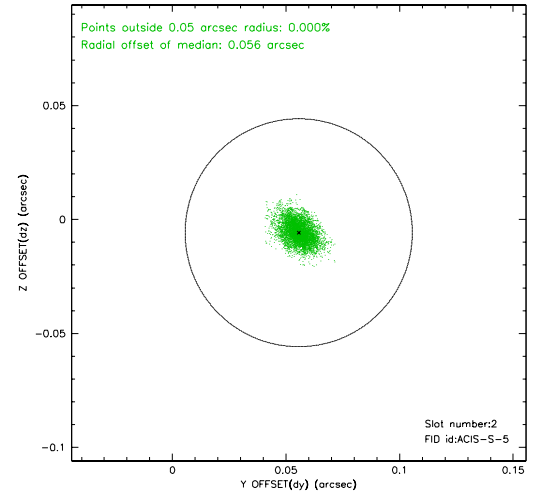
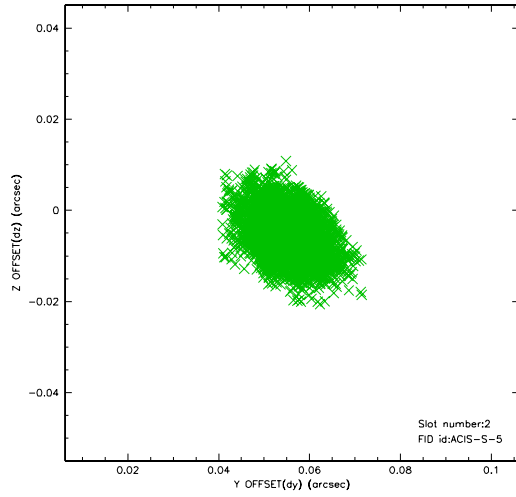
2.5.1 Slot 0



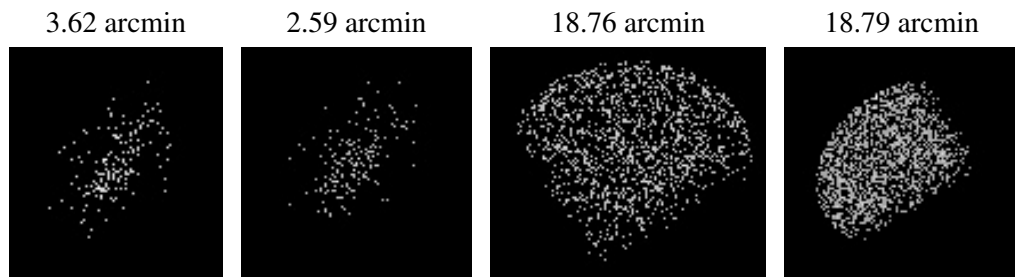
2.5.2 Slot 1



2.5.3 Slot 2



3 Point Sources



A Summary

A.1 Status

V&V Scientist	Jen Lauer
V&V Date (YYYY-MM-DD)	2006.11.24
V&V Edition	1
V&V Disposition and Status	OK
V&V Charge Time	21.3

A.2 Comments

Observed back-to-back with obs2340 as requested.