

# V&V Reference Report

## L2 ASCDS Version : 7.6.9

Observation 1613 - L2 Version 001  
Chandra X-Ray Center

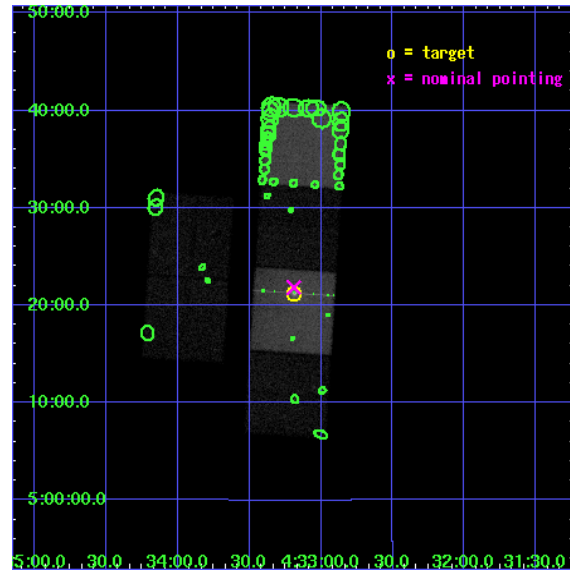
L2 Processing Date : Jan 3 2007

## Contents

<b>1</b>	<b>Front</b>	<b>2</b>
<b>2</b>	<b>OBI</b>	<b>3</b>
2.1	OBI . . . . .	3
2.1.1	Images . . . . .	3
2.1.2	Bias . . . . .	3
2.1.3	Parameters . . . . .	4
2.1.4	Events . . . . .	4
2.2	Compared Parameters . . . . .	5
2.3	Aspect . . . . .	6
2.4	Star Slots . . . . .	9
2.4.1	Slot 3 . . . . .	9
2.4.2	Slot 4 . . . . .	10
2.4.3	Slot 5 . . . . .	11
2.4.4	Slot 6 . . . . .	12
2.4.5	Slot 7 . . . . .	13
2.5	FID Slots . . . . .	14
2.5.1	Slot 0 . . . . .	14
2.5.2	Slot 1 . . . . .	15
2.5.3	Slot 2 . . . . .	16
<b>3</b>	<b>Point Sources</b>	<b>17</b>
<b>A</b>	<b>Summary</b>	<b>18</b>
A.1	Status . . . . .	18
A.2	Comments . . . . .	18

# 1 Front

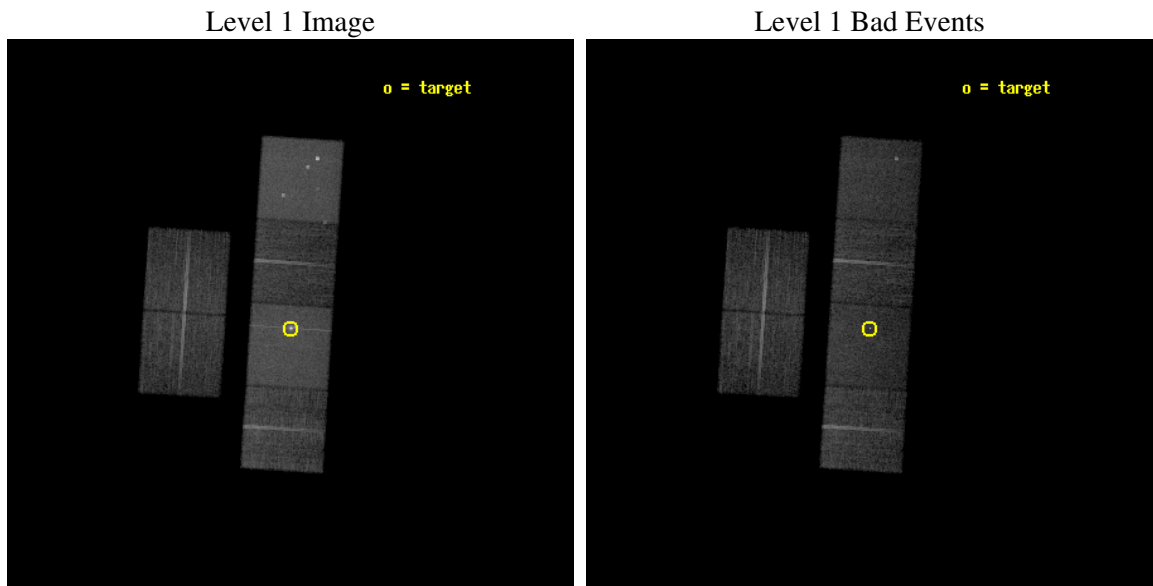
seq_num	700229
obs_id	1613
title	STUDIES OF RADIO JETS AND THE NARROW LINE REGIONS OF ACTIVE GALAXIES
observer	Prof. Andrew Wilson
object	3C120
dtcycle	0
cycle	P
ra_targ	68.29625
dec_targ	5.354333
ra_nom	68.297340993232
dec_nom	5.3640264696474
roll_nom	93.745225406643
revision	2
ontime	13043.200012147
livetime	12878.039159921
ontime2	13039.959021986
ontime3	13043.200012147
ontime5	13043.200012147
ontime6	13043.200012147
ontime7	13043.200012147
ontime8	13043.200012147
l2events	194615



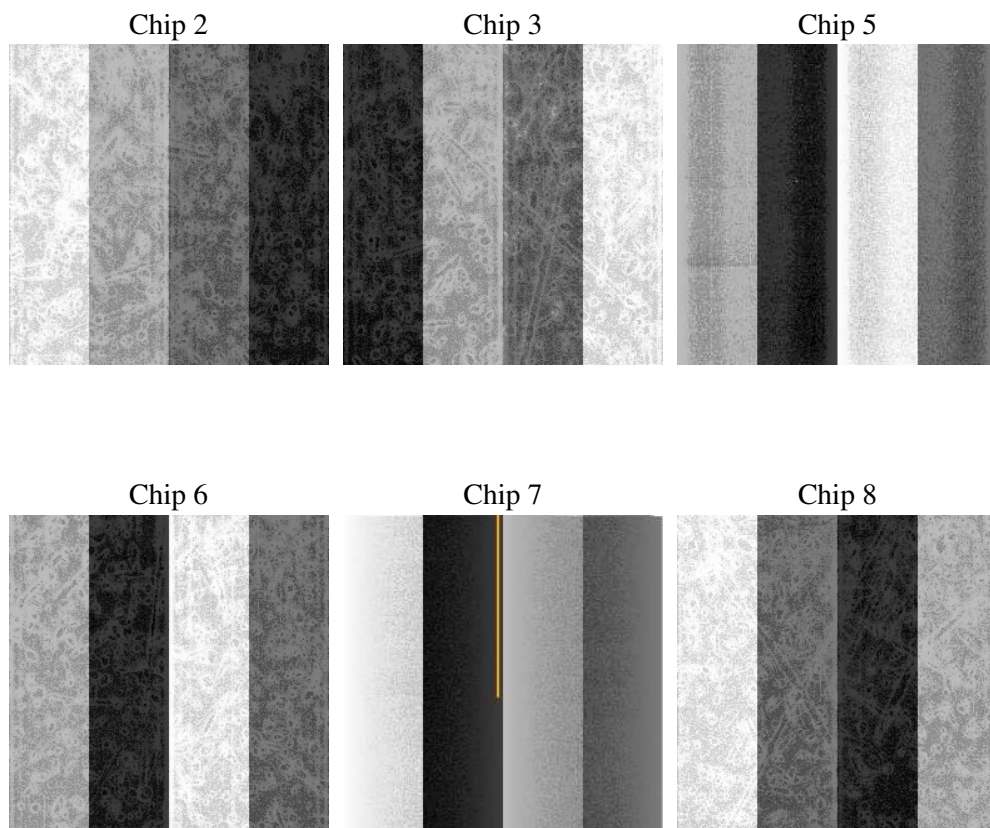
## 2 OBI

### 2.1 OBI

#### 2.1.1 Images



#### 2.1.2 Bias



### 2.1.3 Parameters

obi_num	0
ascdsver	7.6.9
caldsver	3.2.4
date	2007-01-03T14:44:05
revision	2

sched_exp_time	13096.013000
ontime	13048.26785627
ontime2	13045.026846185
ontime3	13048.267836347
ontime5	13048.26785627
ontime6	13048.267836347
ontime7	13048.26785627
ontime8	13048.267836347
l1events	677957

### 2.1.4 Events

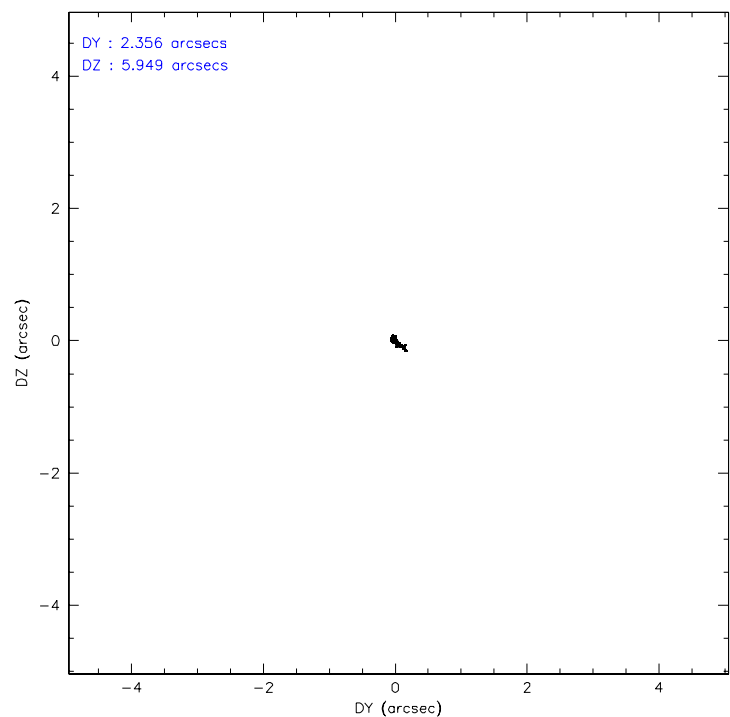
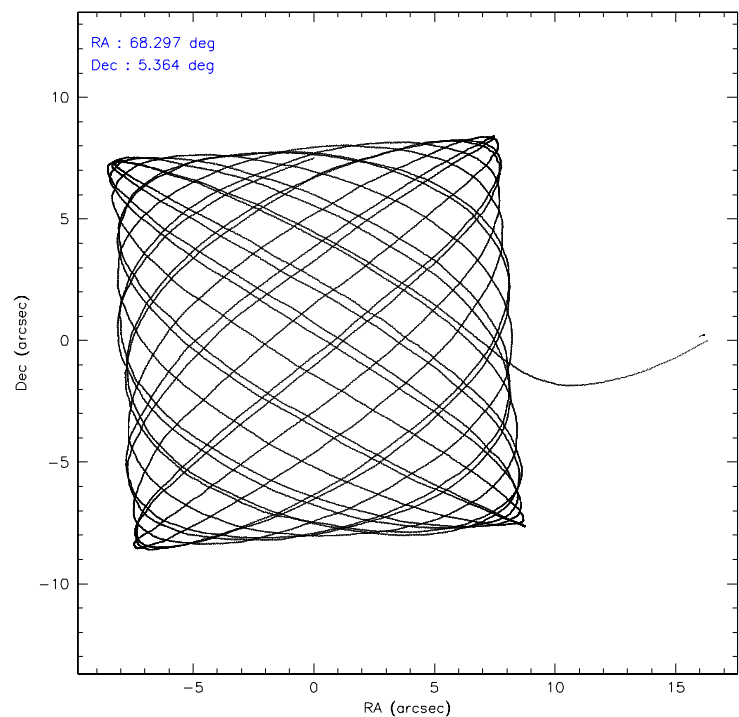
	ccd 2	ccd 3	ccd 5	ccd 6	ccd 7	ccd 8
level 1 events	90002	85676	156343	86826	150543	108567
rejected events	79514	75767	71571	75723	69827	85544
rejected %	88%	88%	45%	87%	46%	78%

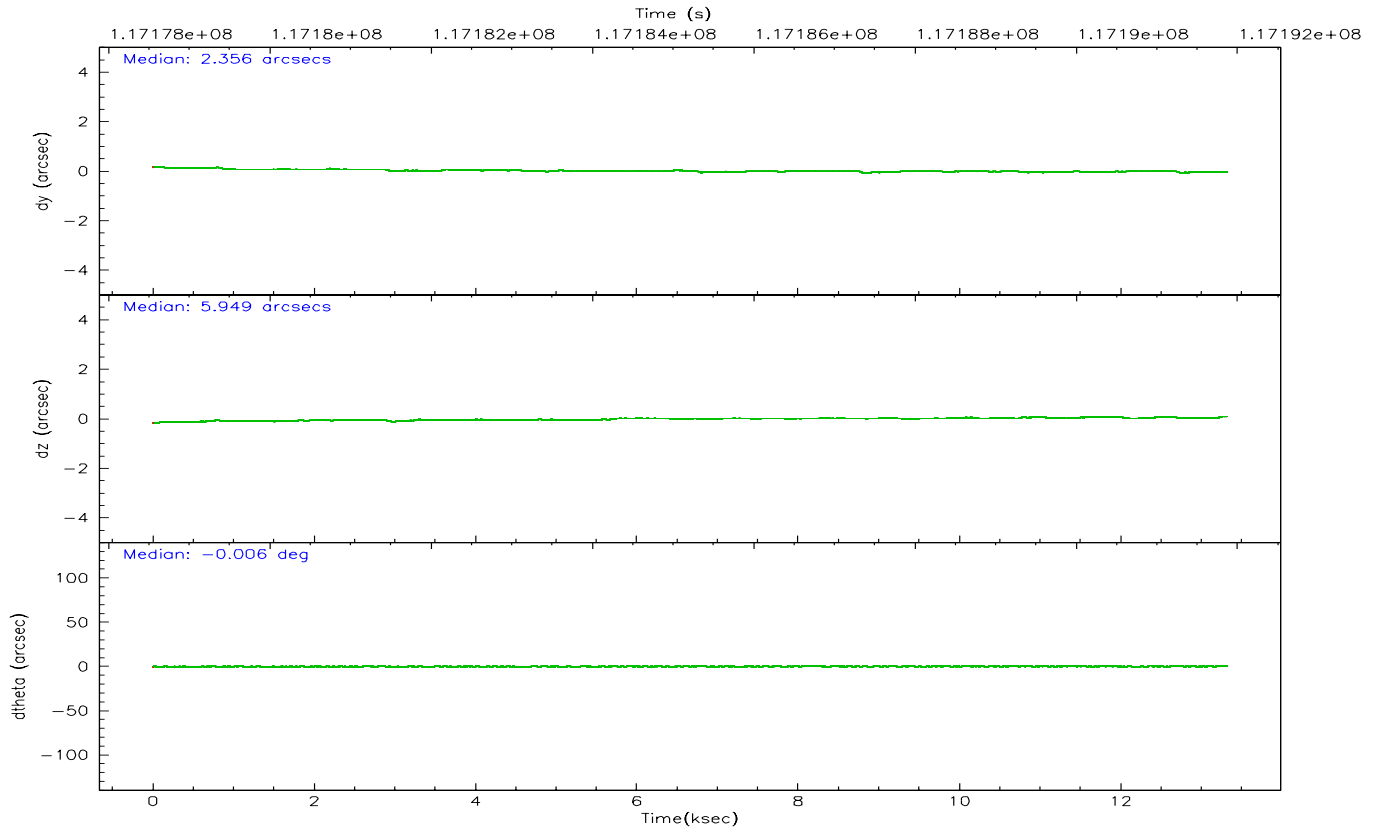
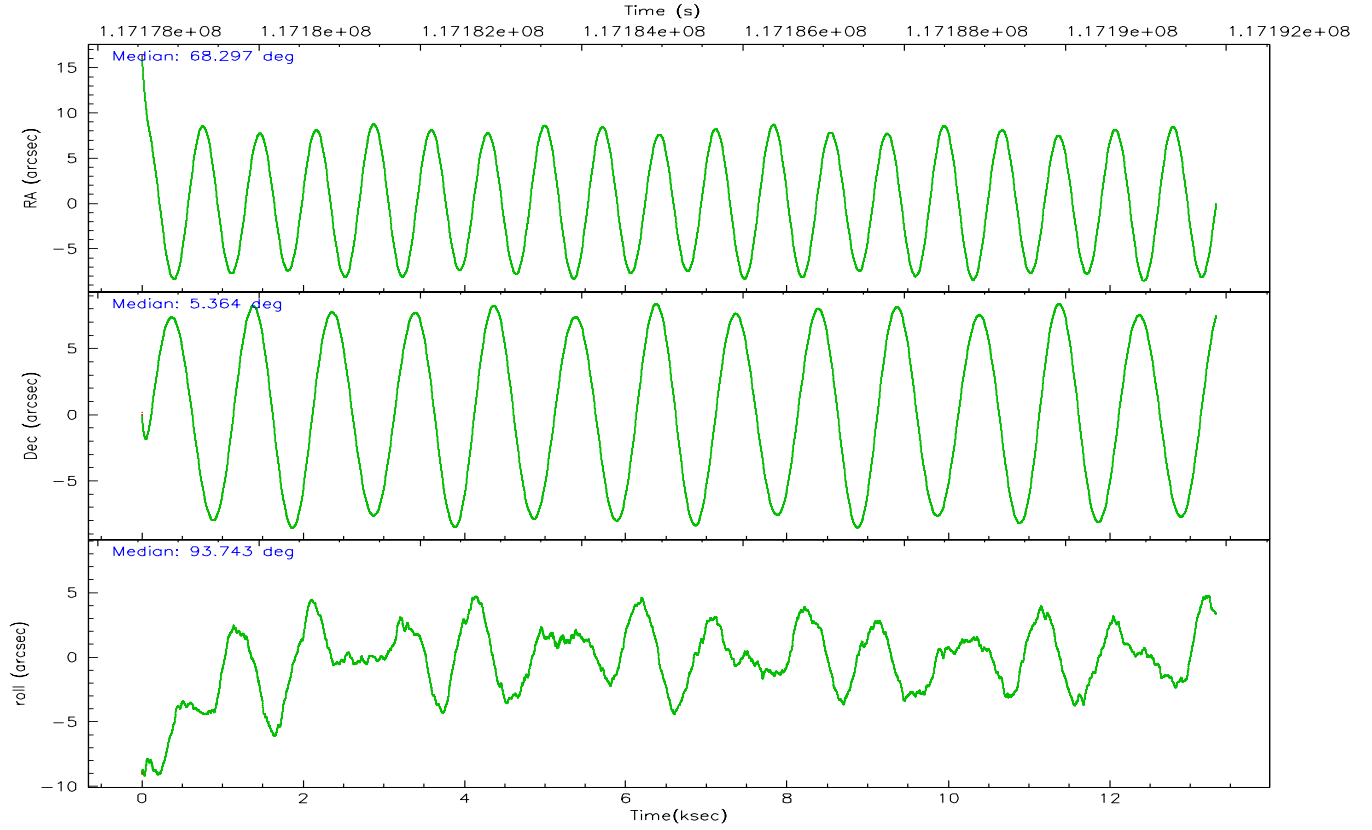
	ccd 2	ccd 3	ccd 5	ccd 6	ccd 7	ccd 8
grade 0 events	4579	4443	12573	5056	9683	7647
	5%	5%	8%	5%	6%	7%
grade 1 events	41	30	729	41	180	61
	0%	0%	0%	0%	0%	0%
grade 2 events	2186	1904	25664	2102	19241	4766
	2%	2%	16%	2%	12%	4%
grade 3 events	961	930	2702	985	5674	2368
	1%	1%	1%	1%	3%	2%
grade 4 events	939	902	2601	986	5270	2290
	1%	1%	1%	1%	3%	2%
grade 5 events	3061	3374	6170	3611	8073	4704
	3%	3%	3%	4%	5%	4%
grade 6 events	1827	1731	41274	1982	40887	5959
	2%	2%	26%	2%	27%	5%
grade 7 events	76408	72362	64630	72063	61535	80772
	84%	84%	41%	82%	40%	74%

## 2.2 Compared Parameters

Parameter	Planned	Actual	Parameter	Planned	Actual
Instrument	ACIS	ACIS	Obspar format version number	6	6
Detector	ACIS-235678	ACIS-235678	Obspar file type	PREDICTED	ACTUAL
Grating	NONE	NONE	Obspar update status	NONE	UPDATED
Data mode	VFAINT	VFAINT	Number of optional ACIS chips dropped	0	0
Observation mode	POINTING	POINTING	On-chip summing requested	N	N
Pointing RA	68.312818	68.29734099323235	Subarray requested	NONE	NONE
Pointing Dec	5.341505	5.364026469647439	Alternating exposures requested	N	N
Pointing Roll	93.587152	93.74522540664307	Primary exposure time	0.000000	3.2
SIM focus pos (mm)	-0.684267	-0.6828225247311905			
SIM defocus (mm)	0	0.001444936568705701			
SIM translation stage pos (mm)	-190.132523	-190.1400660498719			
SIM translation stage offset (mm)	0	0.00754346686406393			
Observation start time	117178778.184000	117177787.87596			
Observation start date	2001-09-18T05:38:34	2001-09-18T05:23:07			
Observation end time	117191874.184000	117192189.12653			
Observation end date	2001-09-18T09:16:50	2001-09-18T09:23:09			
Read mode	TIMED	TIMED			

## 2.3 Aspect





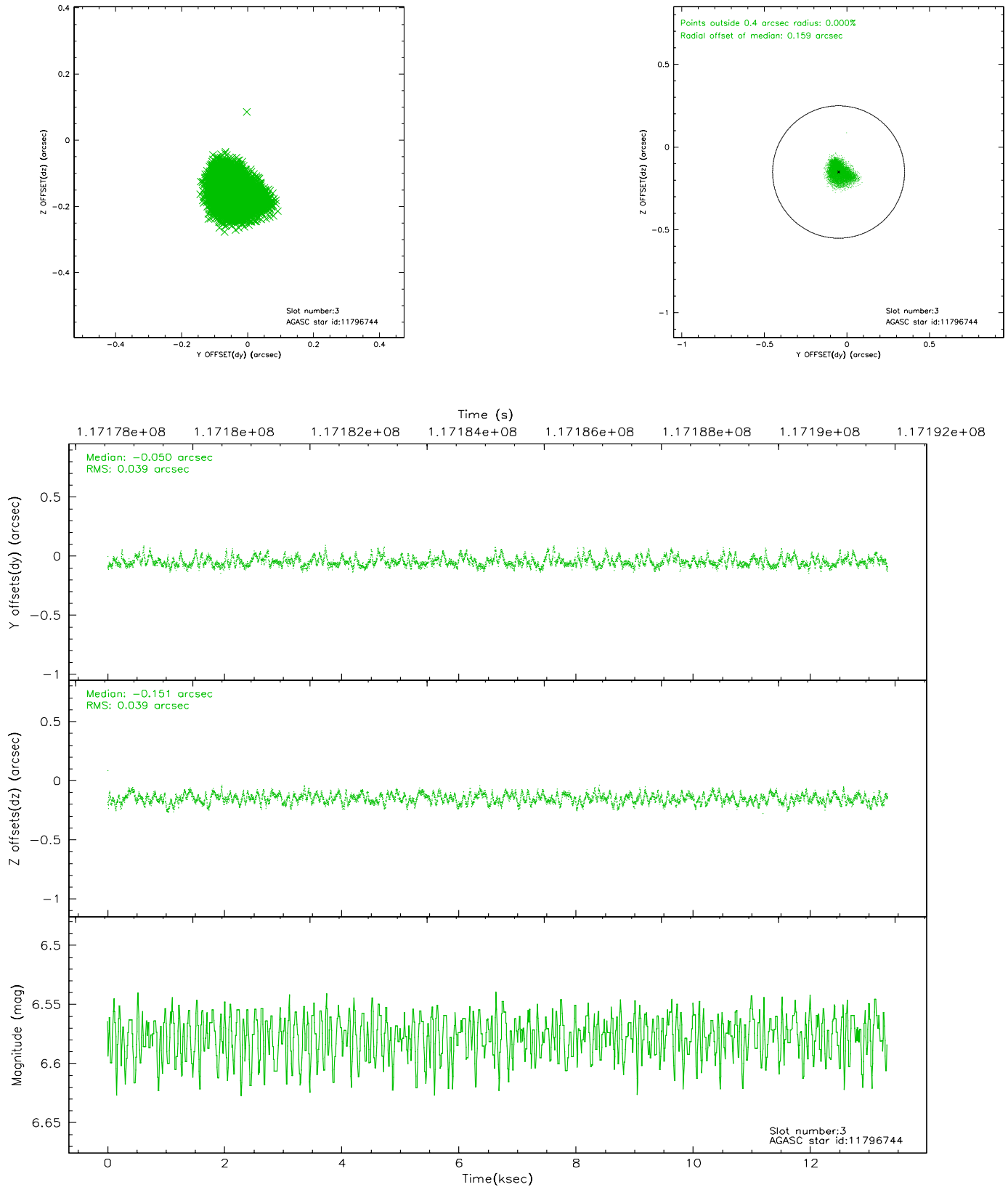
# Slot Statistics

slot	status	id	mag	n_pts	med_dy	med_dz	dr1	dr2	ra	dec	mean_y	mean_z
0	FID	ACIS-S-2	7.12	3249	-0.034	0.016	0.006	0.010	0.000000	0.000000	-754.98	-1727.08
1	FID	ACIS-S-4	7.20	3246	-0.059	0.012	0.005	0.009	0.000000	0.000000	2158.06	181.11
2	FID	ACIS-S-5	7.24	3248	0.062	-0.019	0.006	0.010	0.000000	0.000000	-1807.32	175.05
3	GUIDE	11796744	6.58	6497	-0.050	-0.151	0.059	0.093	68.020033	5.410032	311.46	1031.23
4	GUIDE	11801400	7.91	6498	0.091	0.035	0.059	0.096	68.459989	5.385023	122.56	-536.13
5	GUIDE	12327088	8.61	6434	-0.262	-0.210	0.057	0.091	67.823561	5.844308	1916.04	1635.12
6	GUIDE	11798168	8.73	6497	0.222	0.150	0.063	0.102	68.723067	4.993277	-1342.77	-1390.00
7	GUIDE	11798712	9.00	6495	-0.005	0.176	0.071	0.117	68.421522	5.061327	-1031.78	-326.30

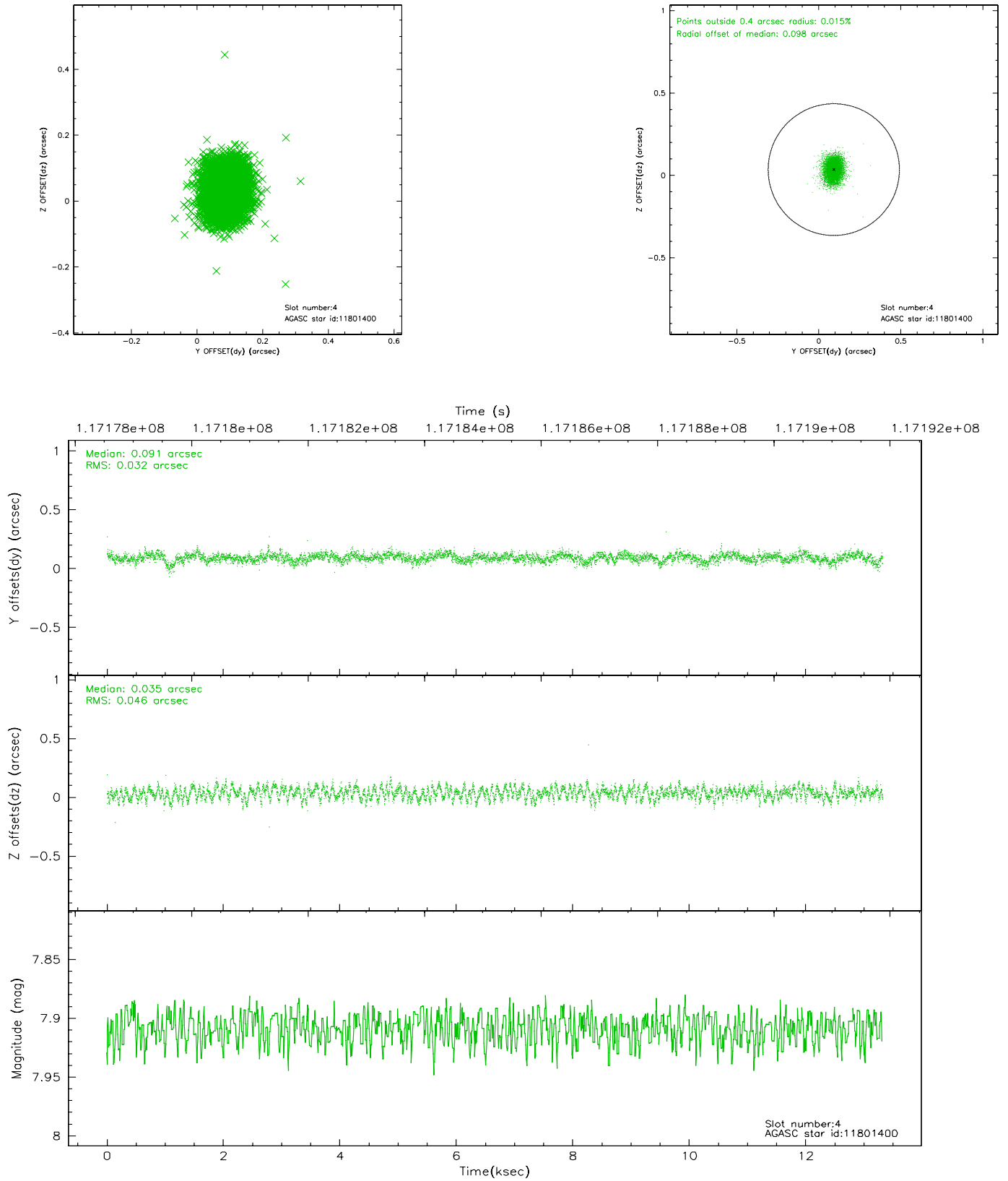


## 2.4 Star Slots

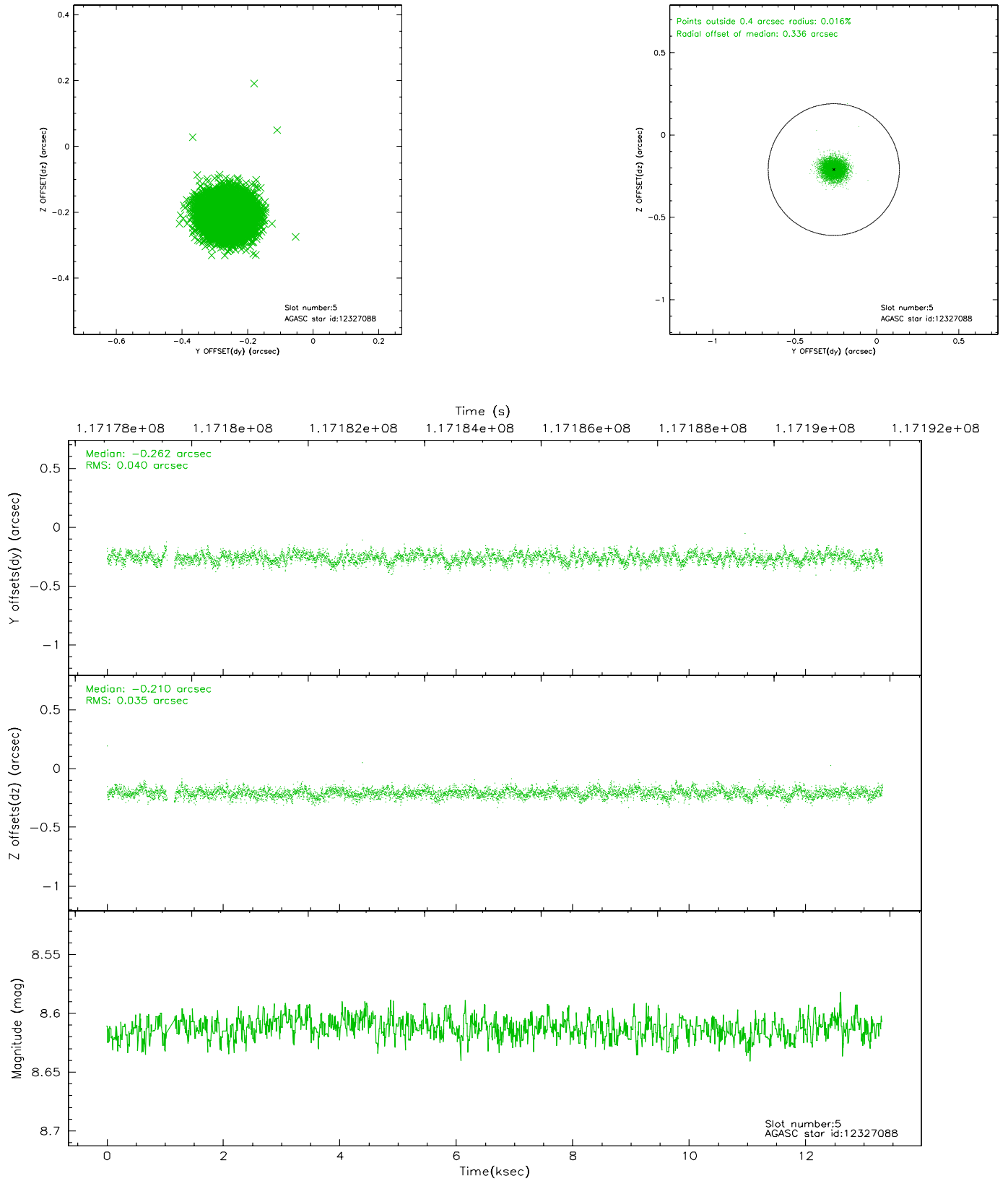
### 2.4.1 Slot 3



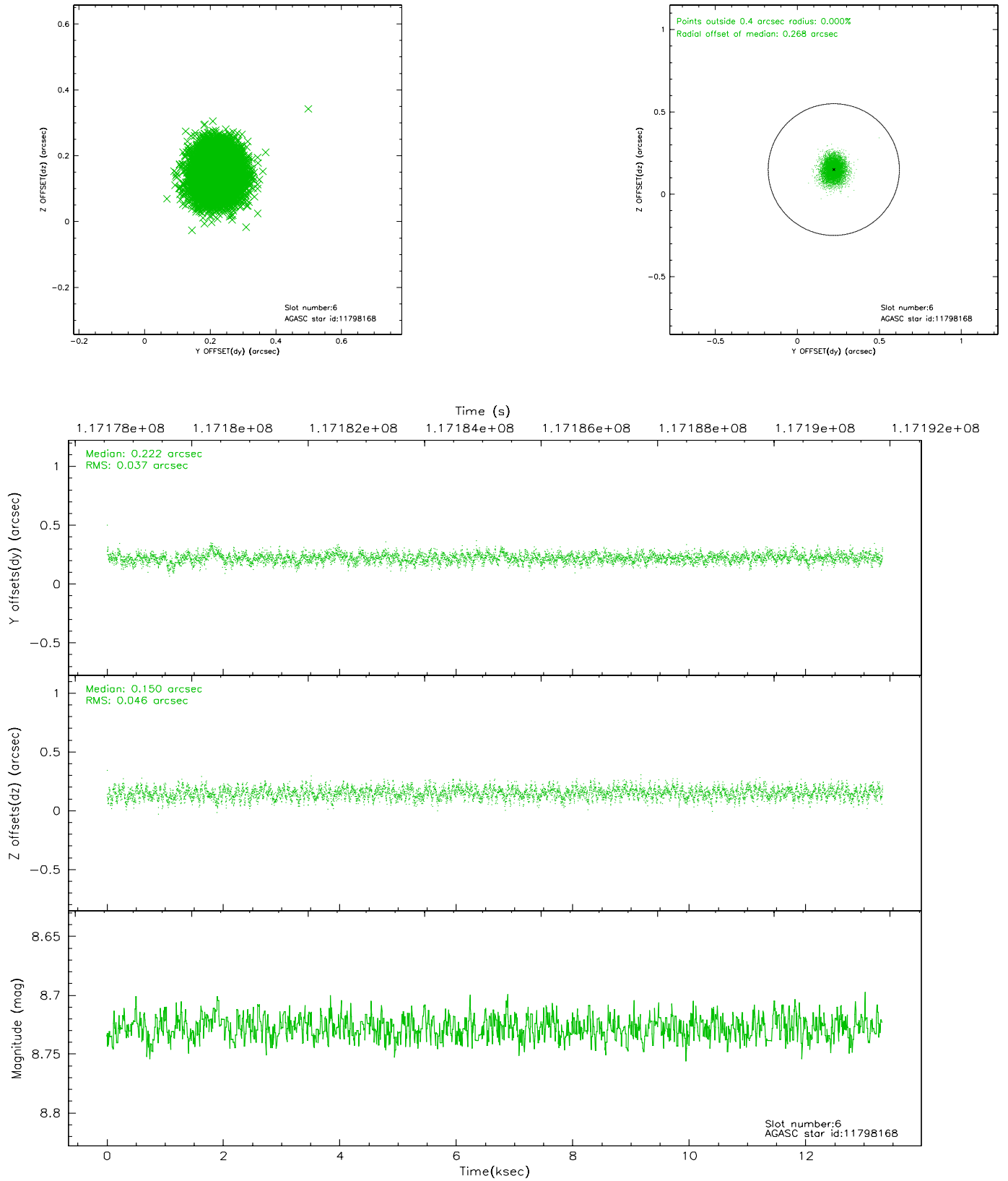
## 2.4.2 Slot 4



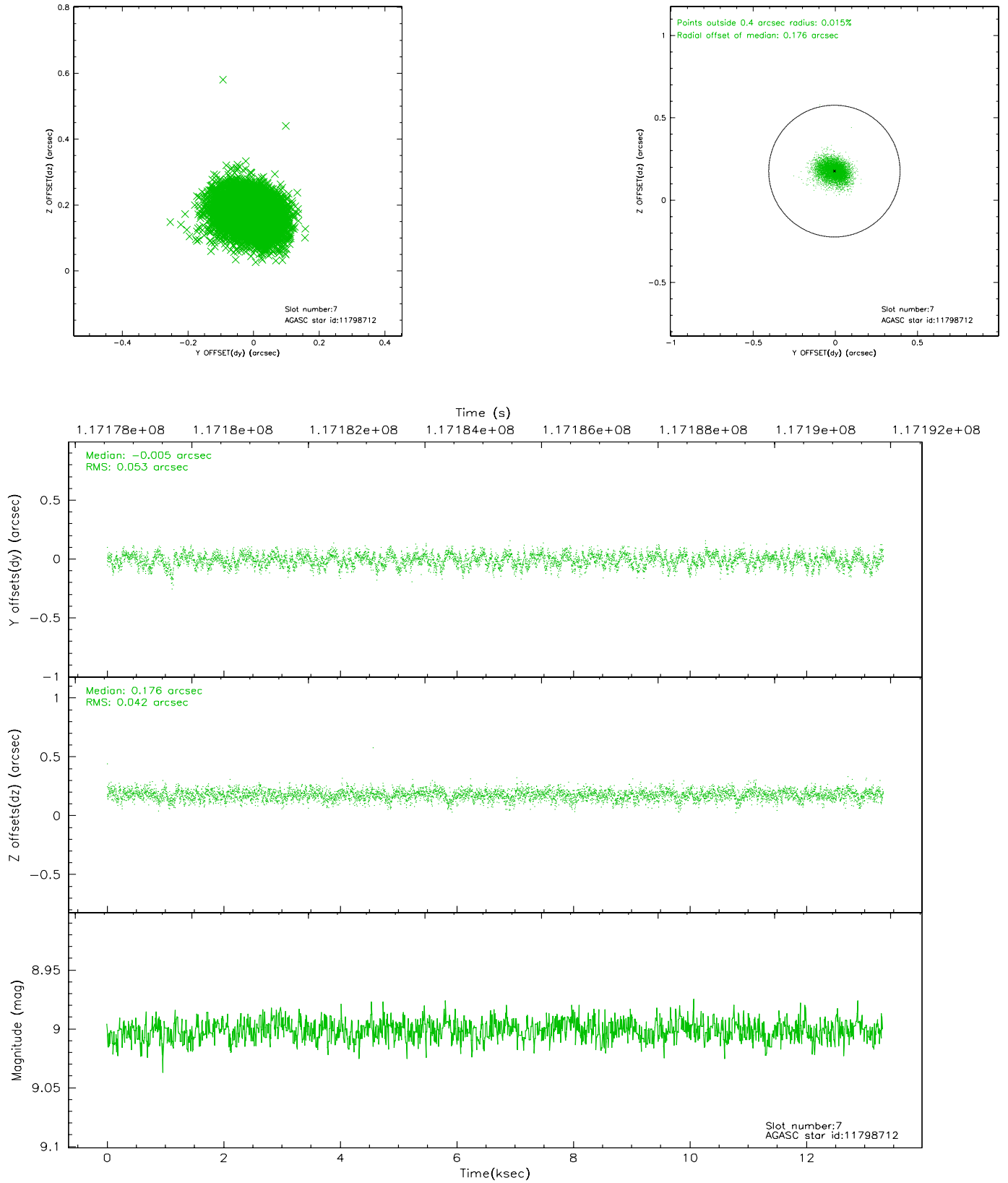
### 2.4.3 Slot 5



## 2.4.4 Slot 6

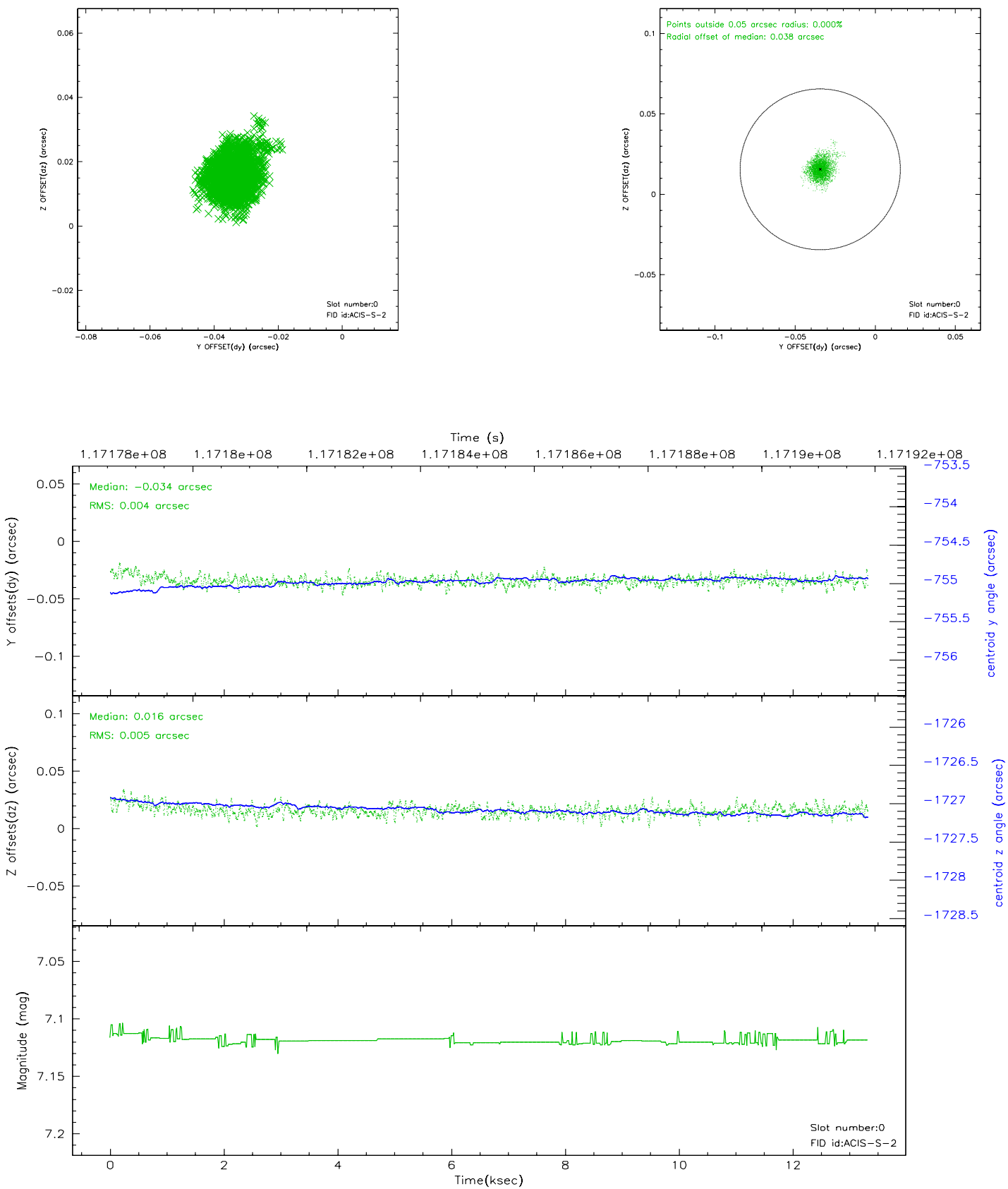


## 2.4.5 Slot 7

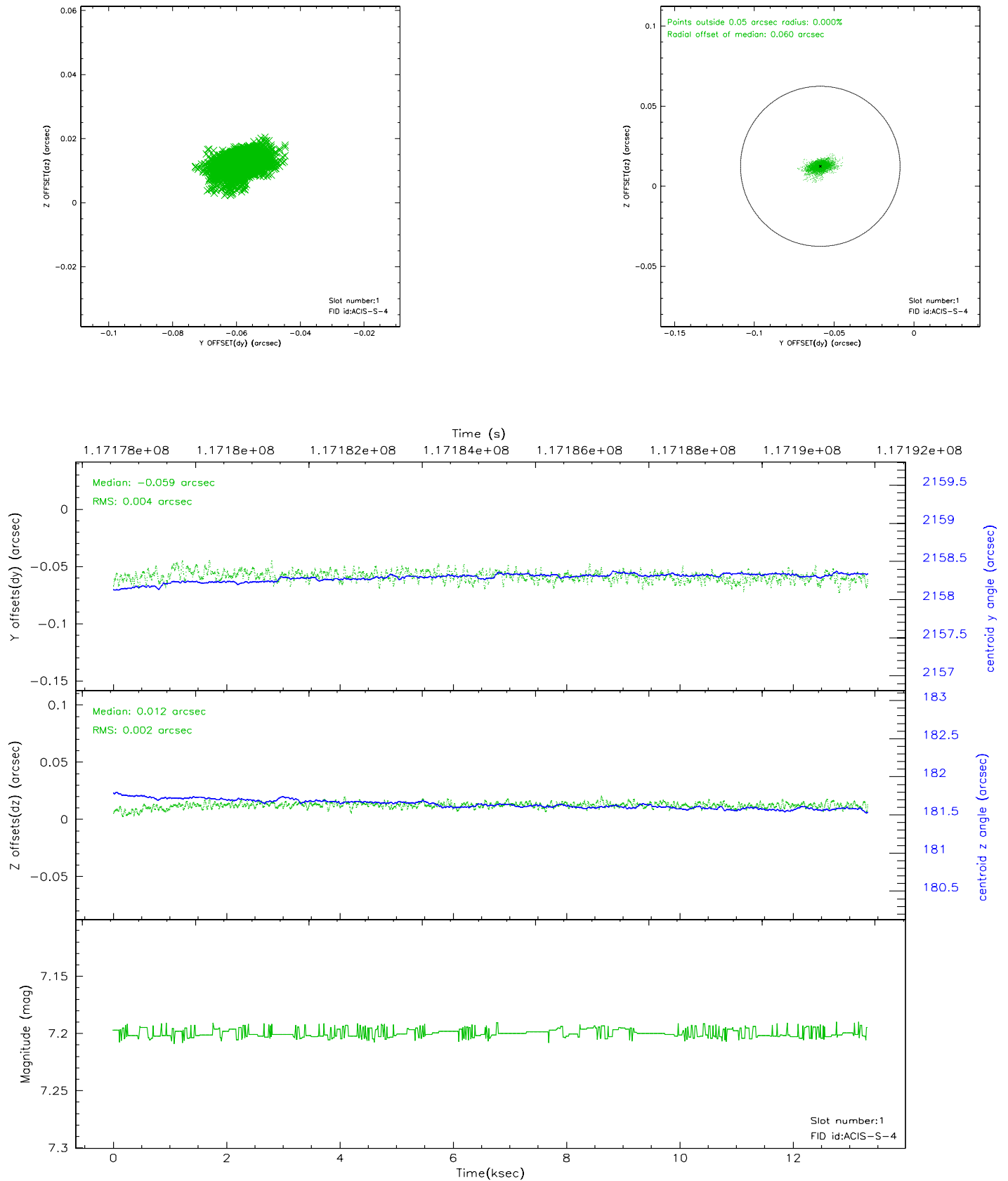


## 2.5 FID Slots

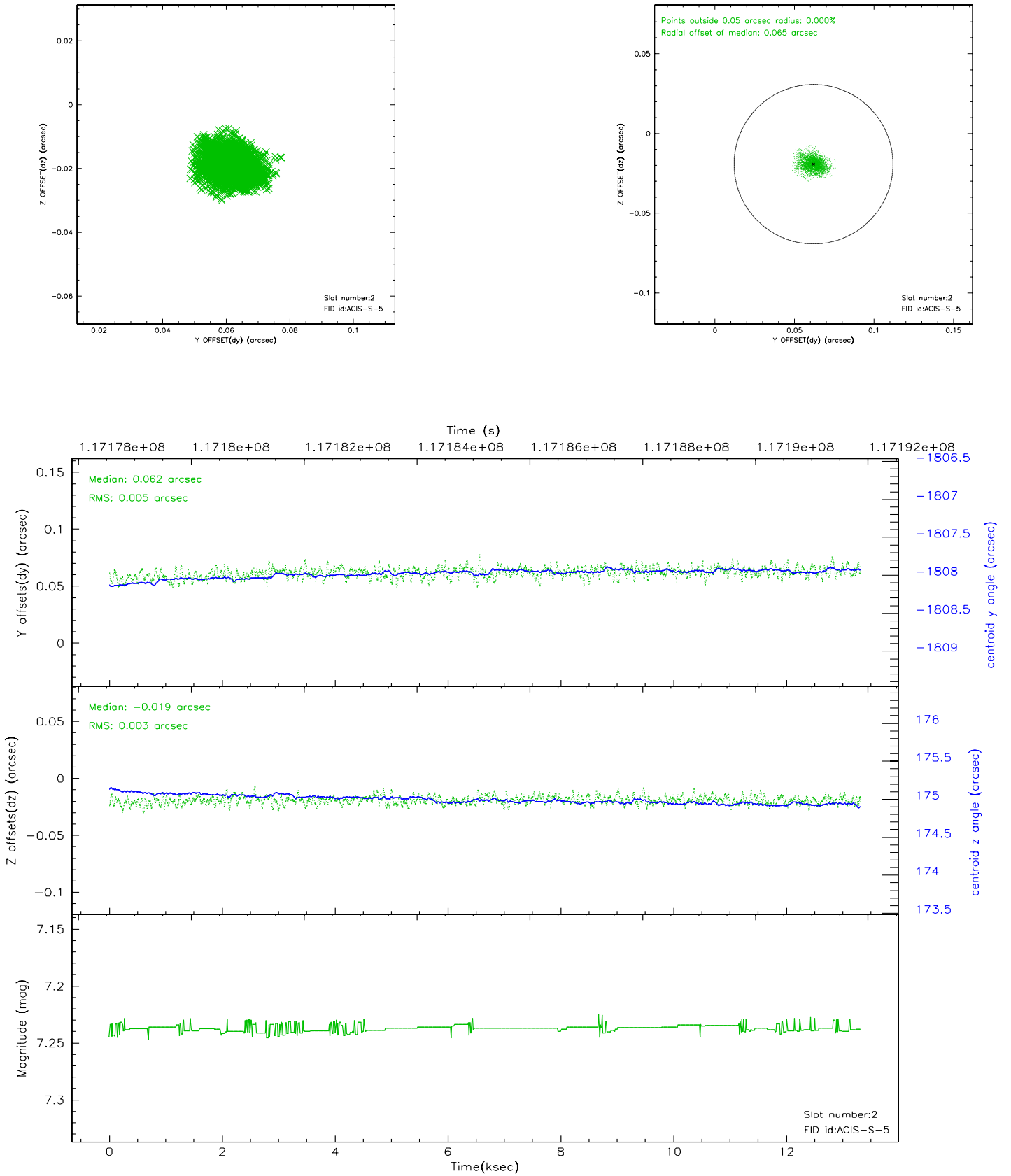
### 2.5.1 Slot 0



## 2.5.2 Slot 1

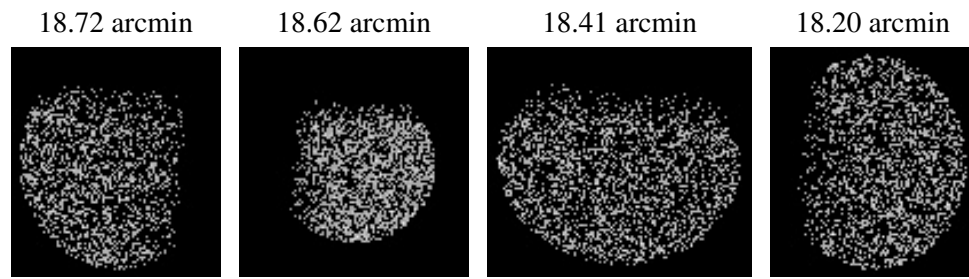


### 2.5.3 Slot 2





### 3 Point Sources



## A Summary

### A.1 Status

V&V Scientist	Beth Sundheim
V&V Date (YYYY-MM-DD)	2007.01.04
V&V Edition	1
V&V Disposition and Status	OK
V&V Charge Time	13.046

### A.2 Comments