

V&V Reference Report

L2 ASCDS Version : 7.6.10

Observation 1602 - L2 Version 001
Chandra X-Ray Center

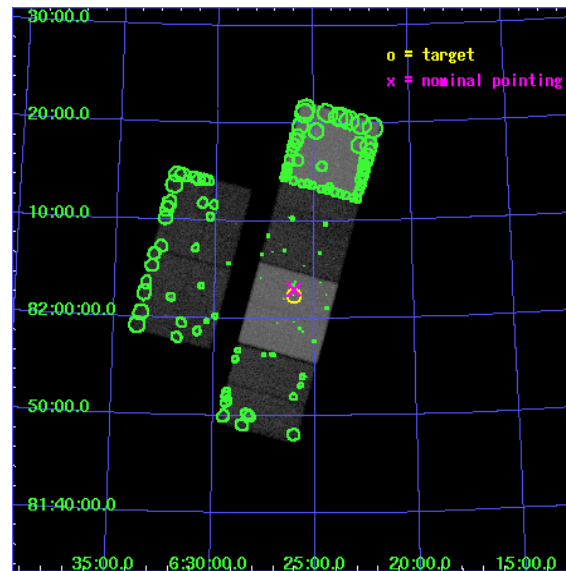
L2 Processing Date : Jan 10 2007

Contents

1	Front	2
2	OBI	3
2.1	OBI	3
2.1.1	Images	3
2.1.2	Bias	3
2.1.3	Parameters	4
2.1.4	Events	4
2.2	Compared Parameters	5
2.3	Aspect	6
2.4	Star Slots	9
2.4.1	Slot 3	9
2.4.2	Slot 4	10
2.4.3	Slot 5	11
2.4.4	Slot 6	12
2.4.5	Slot 7	13
2.5	FID Slots	14
2.5.1	Slot 0	14
2.5.2	Slot 1	15
2.5.3	Slot 2	16
3	Point Sources	17
A	Summary	18
A.1	Status	18
A.2	Comments	18

1 Front

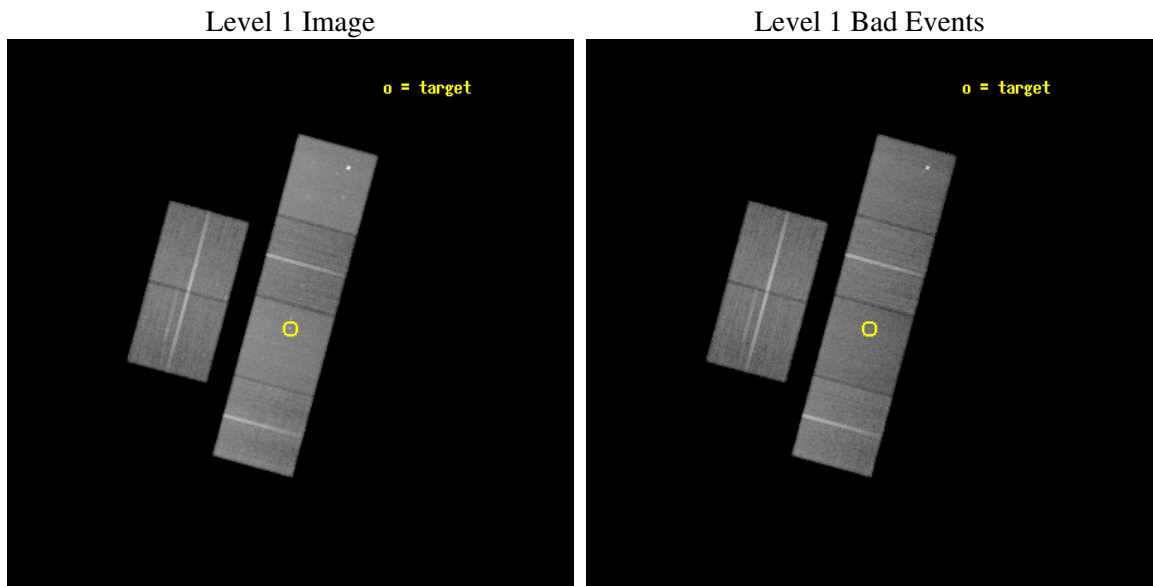
seq_num	700218
obs_id	1602
title	GPS QUASARS AND THE SURROUNDING HOT MEDIUM
observer	Dr Stephen Murray
object	Q0615+820
dtcycle	0
cycle	P
ra_targ	96.512083
dec_targ	82.040417
ra_nom	96.506005488299
dec_nom	82.050125997402
roll_nom	105.16346194766
revision	2
ontime	47935.877084151
livetime	47328.884144991
ontime2	47935.877084151
ontime3	47929.39516364
ontime5	47935.877084151
ontime6	47935.877084151
ontime7	47935.877084151
ontime8	47935.877084151
l2events	461283



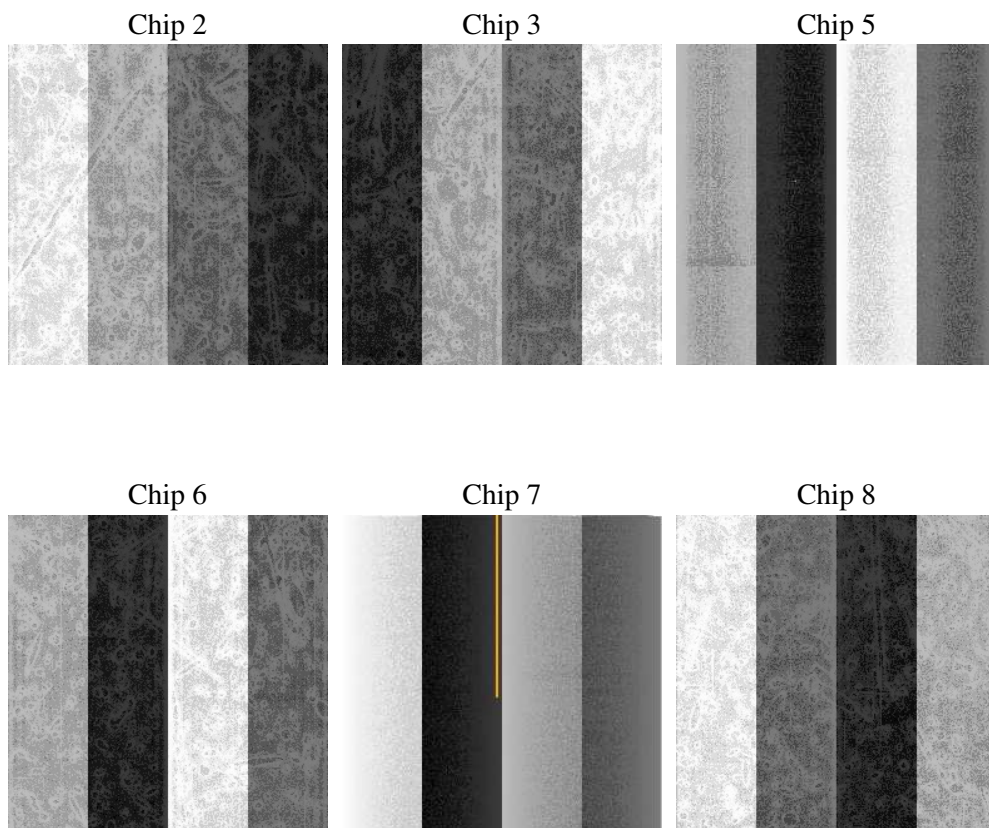
2 OBI

2.1 OBI

2.1.1 Images



2.1.2 Bias



2.1.3 Parameters

obi_num	0
ascdsver	7.6.10
caldsver	3.3.0
date	2007-01-10T14:21:44
revision	2

sched_exp_time	48000.000000
ontime	47935.877084151
ontime2	47935.877084151
ontime3	47929.39516364
ontime5	47935.877084151
ontime6	47935.877084151
ontime7	47935.877084151
ontime8	47935.877084151
l1events	2087165

2.1.4 Events

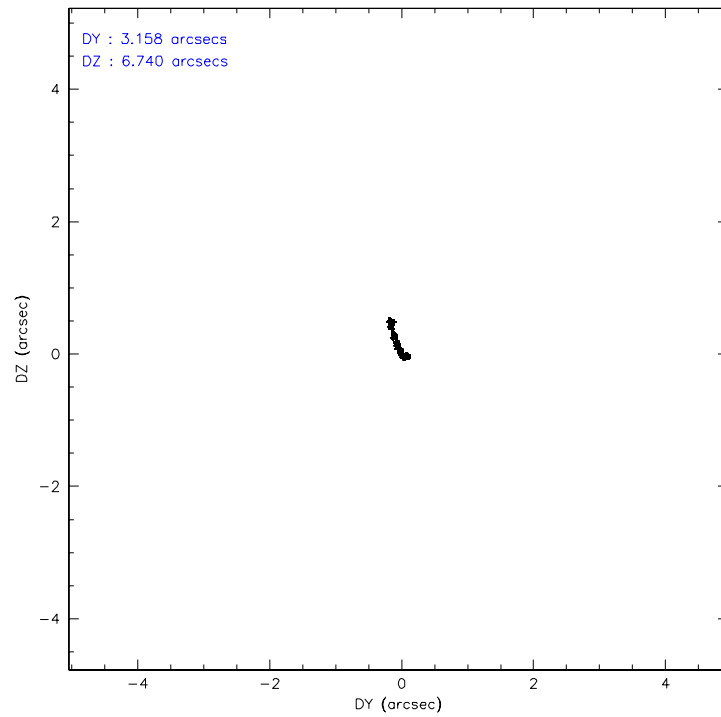
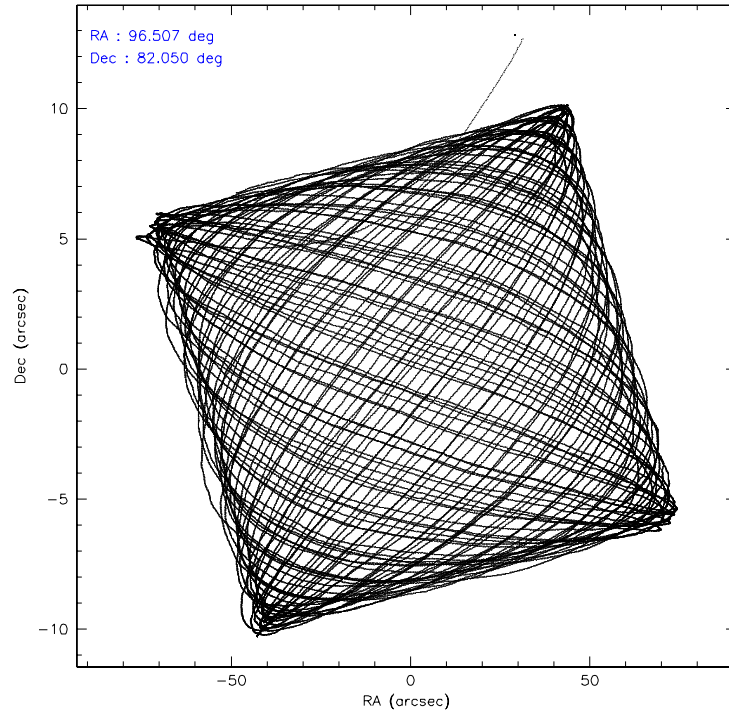
	ccd 2	ccd 3	ccd 5	ccd 6	ccd 7	ccd 8
level 1 events	313055	290854	425179	302496	386178	369403
rejected events	278208	257409	234849	267555	225227	294921
rejected %	88%	88%	55%	88%	58%	79%

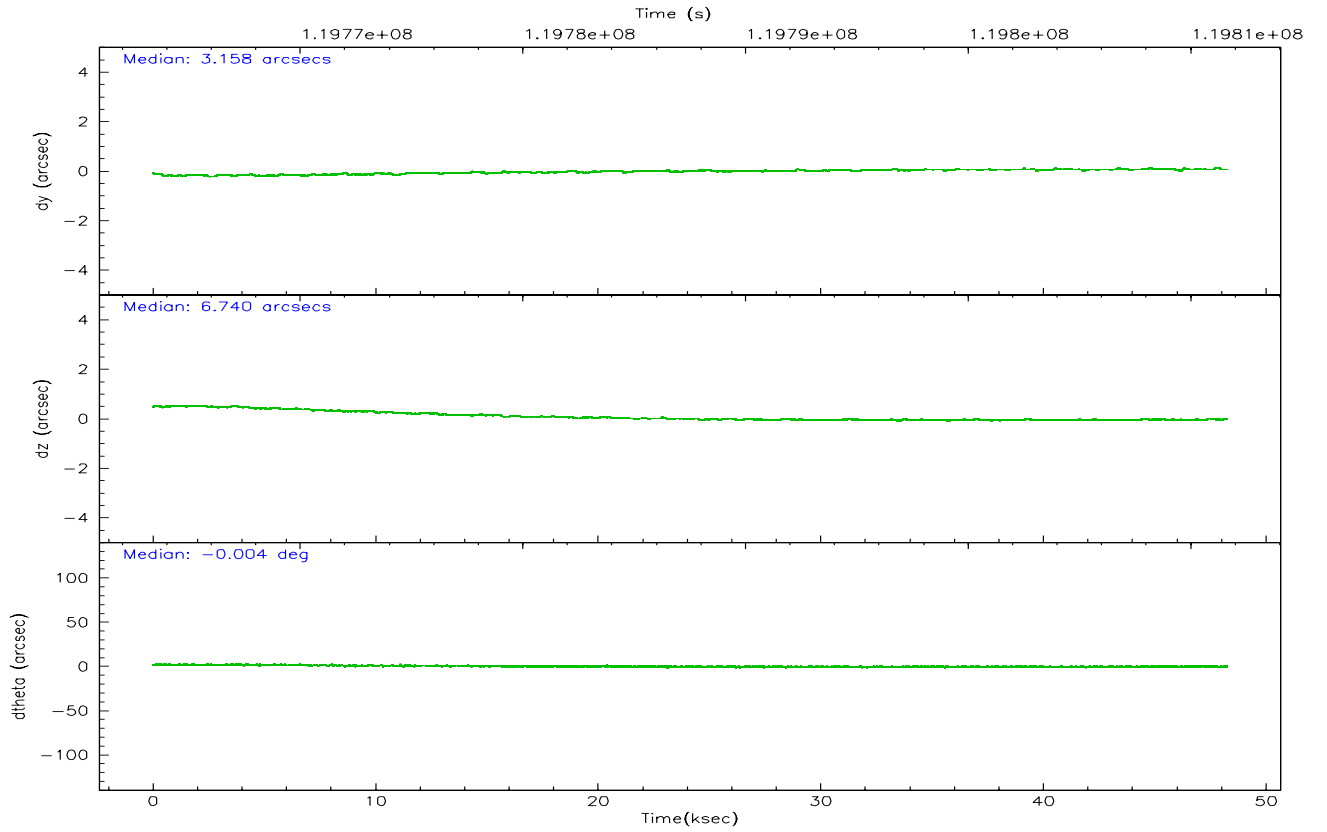
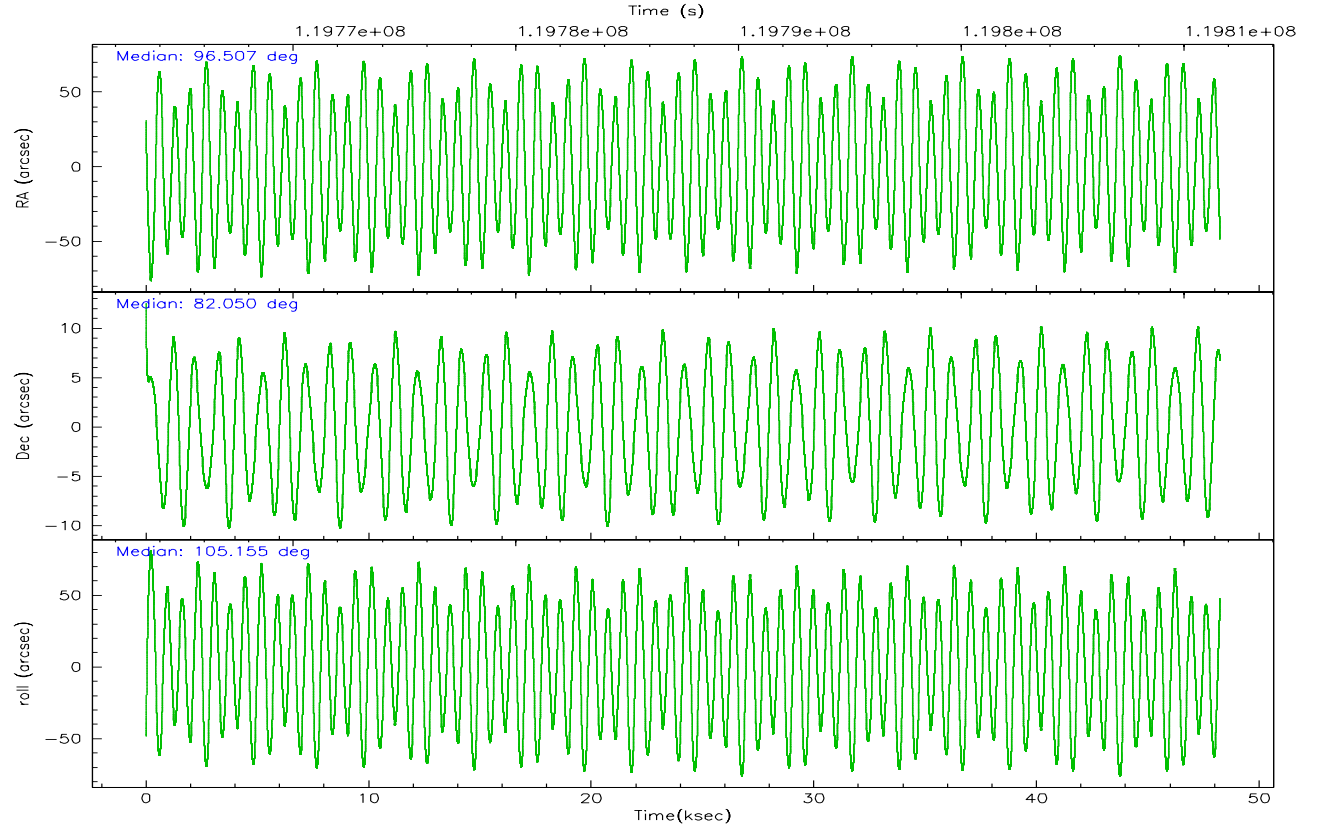
	ccd 2	ccd 3	ccd 5	ccd 6	ccd 7	ccd 8
grade 0 events	14873	14277	15490	14214	15471	23816
	4%	4%	3%	4%	4%	6%
grade 1 events	132	151	484	172	373	227
	0%	0%	0%	0%	0%	0%
grade 2 events	7545	6557	57027	7074	32018	15673
	2%	2%	13%	2%	8%	4%
grade 3 events	3166	3313	9697	3484	14597	8379
	1%	1%	2%	1%	3%	2%
grade 4 events	3149	3223	7732	3294	14434	7687
	1%	1%	1%	1%	3%	2%
grade 5 events	10643	11466	34401	12829	36752	15856
	3%	3%	8%	4%	9%	4%
grade 6 events	6117	6081	100414	6880	84458	18932
	1%	2%	23%	2%	21%	5%
grade 7 events	267430	245786	199934	254549	188075	278833
	85%	84%	47%	84%	48%	75%

2.2 Compared Parameters

Parameter	Planned	Actual	Parameter	Planned	Actual
Instrument	ACIS	ACIS	Obspar format version number	6	6
Detector	ACIS-235678	ACIS-235678	Obspar file type	PREDICTED	ACTUAL
Grating	NONE	NONE	Obspar update status	NONE	UPDATED
Observation mode	POINTING	POINTING	Number of optional ACIS chips dropped	0	0
Pointing RA	96.647107	96.50600548829928	On-chip summing requested	N	N
Pointing Dec	82.031097	82.0501259974024	Subarray requested	NONE	NONE
Pointing Roll	104.867102	105.1634619476582	Alternating exposures requested	N	N
SIM focus pos (mm)	-0.684267	-0.6828225247311905	Primary exposure time	0.000000	3.2
SIM defocus (mm)	0	0.001444936568705701			
SIM translation stage pos (mm)	-190.132523	-190.1400660498719			
SIM translation stage offset (mm)	0	0.00754346686406393			
Observation start time	119763639.184000	119762626.31597			
Observation start date	2001-10-18T03:39:35	2001-10-18T03:23:46			
Observation end time	119811639.184000	119812273.73044			
Observation end date	2001-10-18T16:59:35	2001-10-18T17:11:13			
Read mode	TIMED	TIMED			

2.3 Aspect



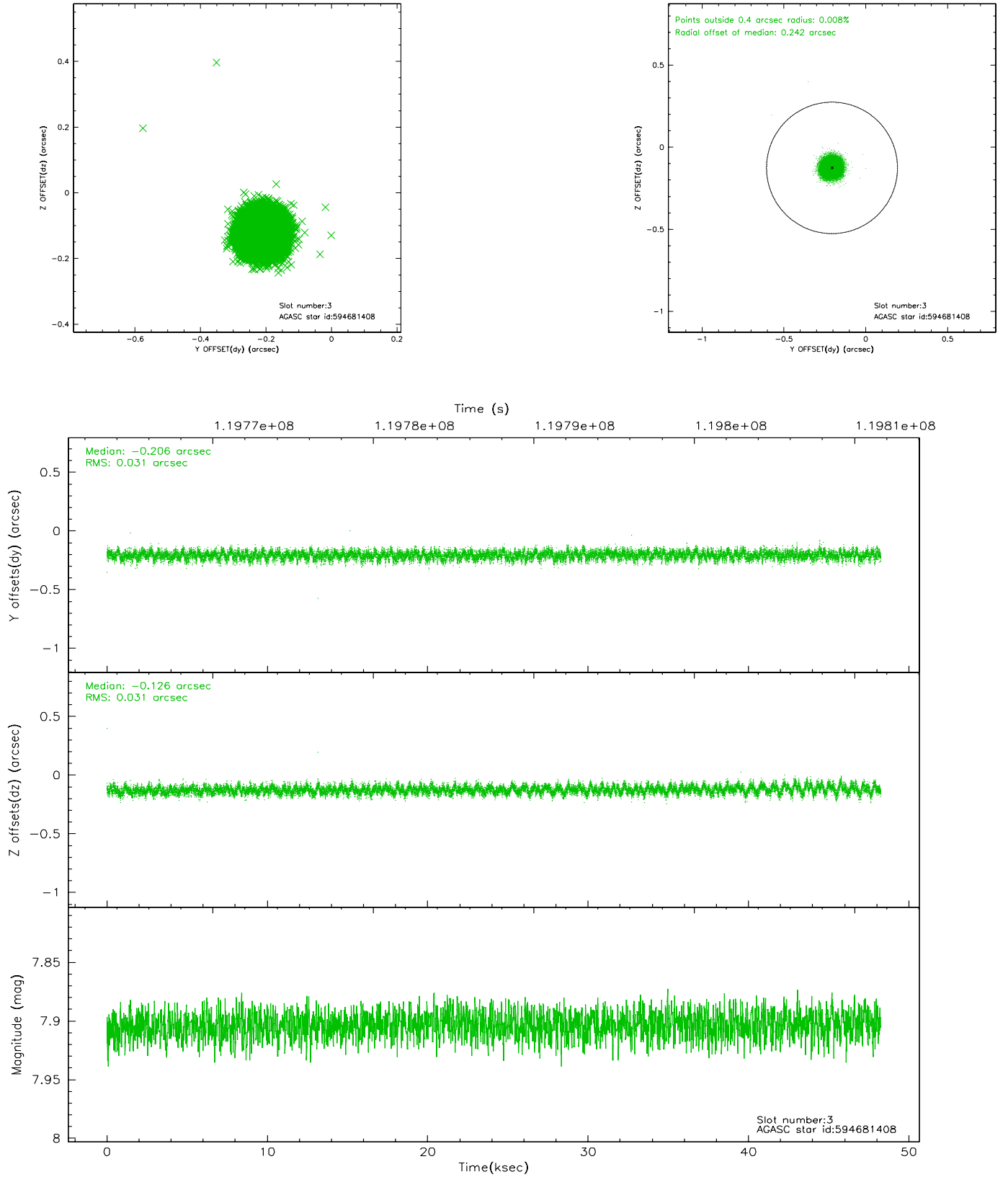


Slot Statistics

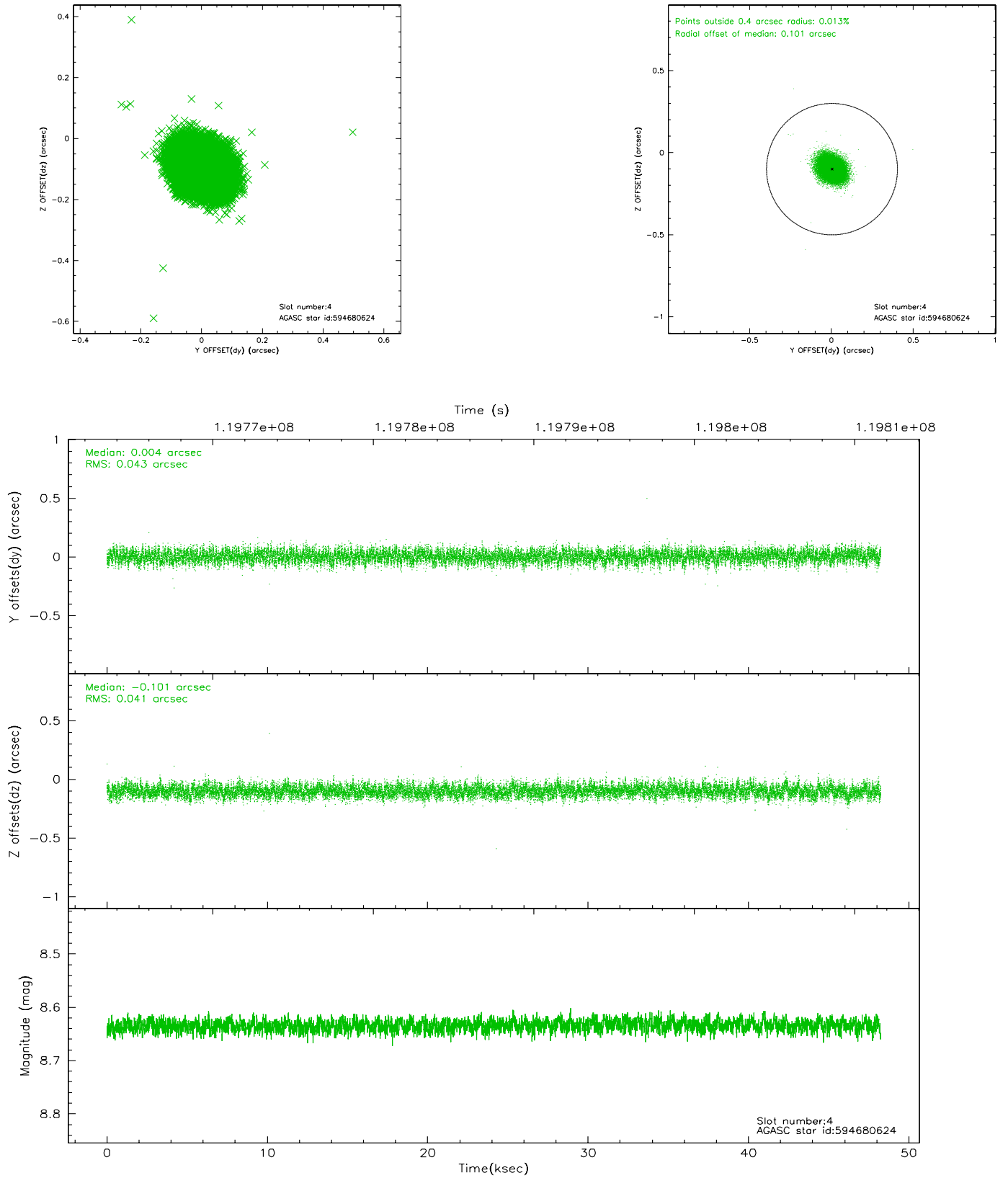
slot	status	id	mag	n_pts	med_dy	med_dz	dr1	dr2	ra	dec	mean_y	mean_z
0	FID	ACIS-S-2	7.11	11765	-0.001	0.033	0.008	0.013	0.000000	0.000000	-755.77	-1727.97
1	FID	ACIS-S-4	7.20	11765	-0.068	-0.008	0.009	0.020	0.000000	0.000000	2157.43	180.50
2	FID	ACIS-S-5	7.24	11765	0.038	-0.016	0.008	0.014	0.000000	0.000000	-1808.60	174.13
3	GUIDE	594681408	7.90	23523	-0.206	-0.126	0.046	0.074	92.195738	82.458441	2105.18	1615.56
4	GUIDE	594680624	8.63	23528	0.004	-0.101	0.064	0.102	94.905529	81.949283	-45.37	920.67
5	GUIDE	594678544	8.97	23527	0.151	-0.082	0.068	0.113	96.021415	81.748479	-897.33	572.90
6	GUIDE	594808400	9.20	23528	0.024	0.138	0.088	0.144	100.329489	82.267337	420.83	-1955.38
7	GUIDE	594810008	9.51	23523	0.026	0.173	0.110	0.179	101.647504	81.819468	-1284.20	-2305.65

2.4 Star Slots

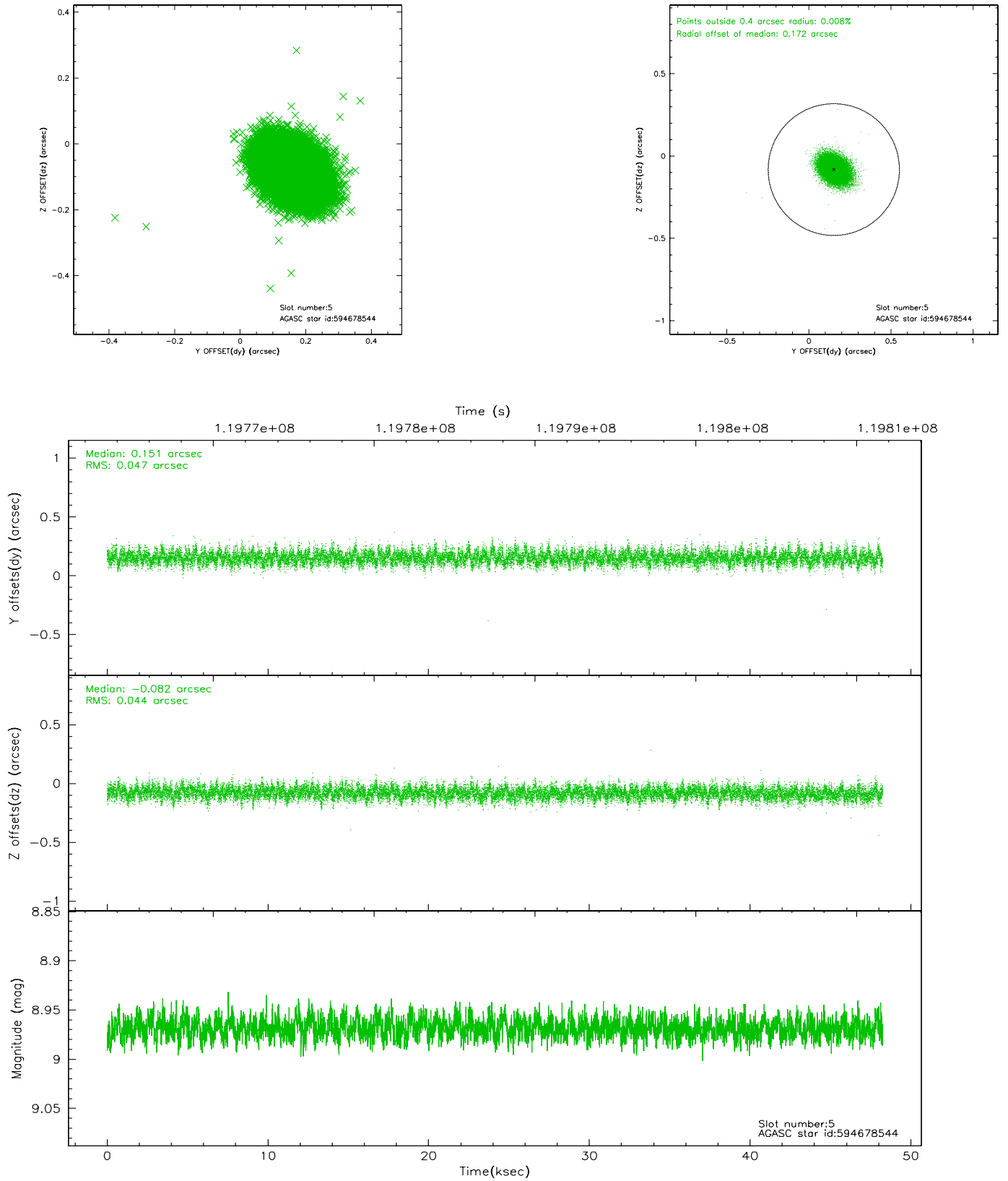
2.4.1 Slot 3



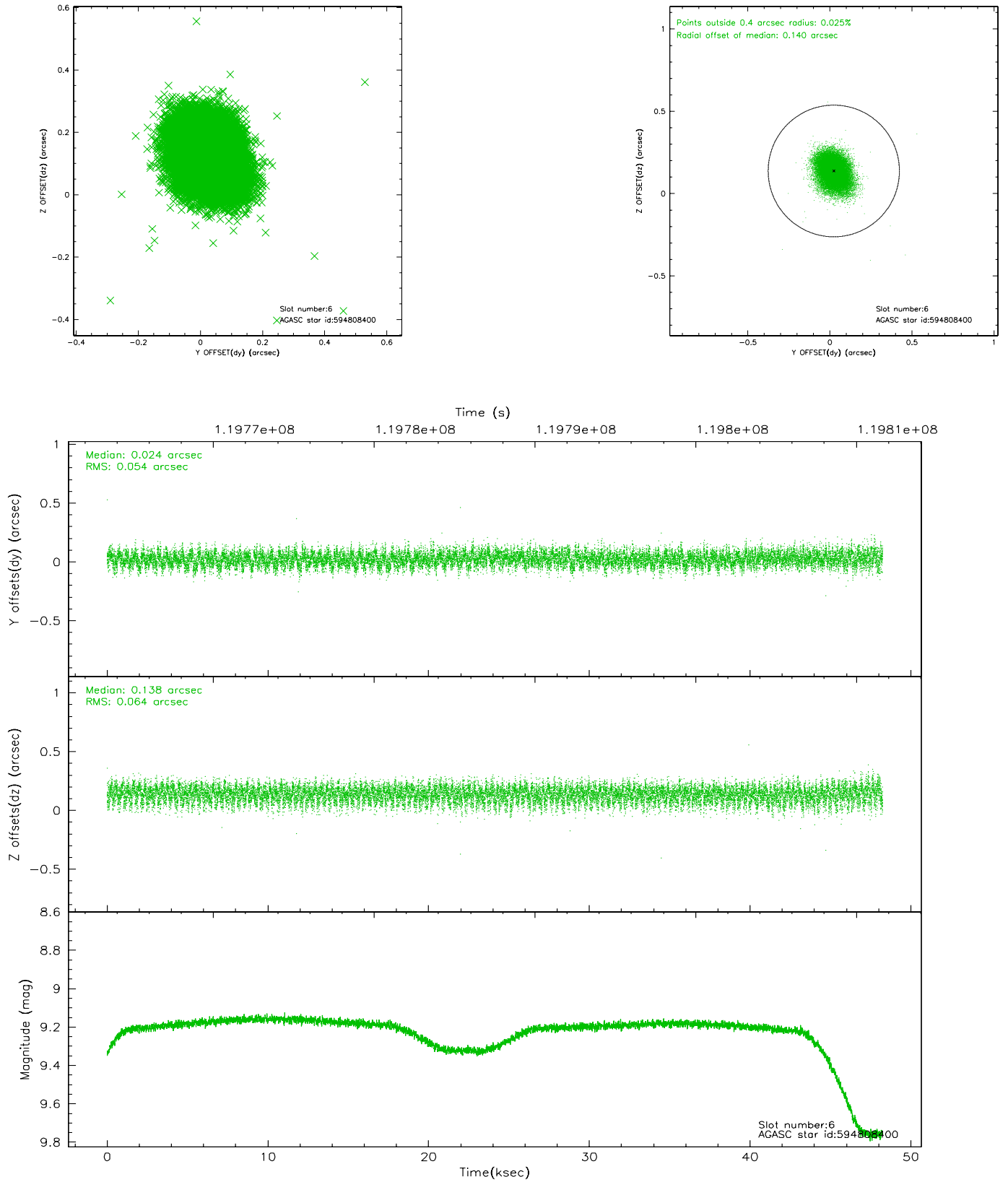
2.4.2 Slot 4



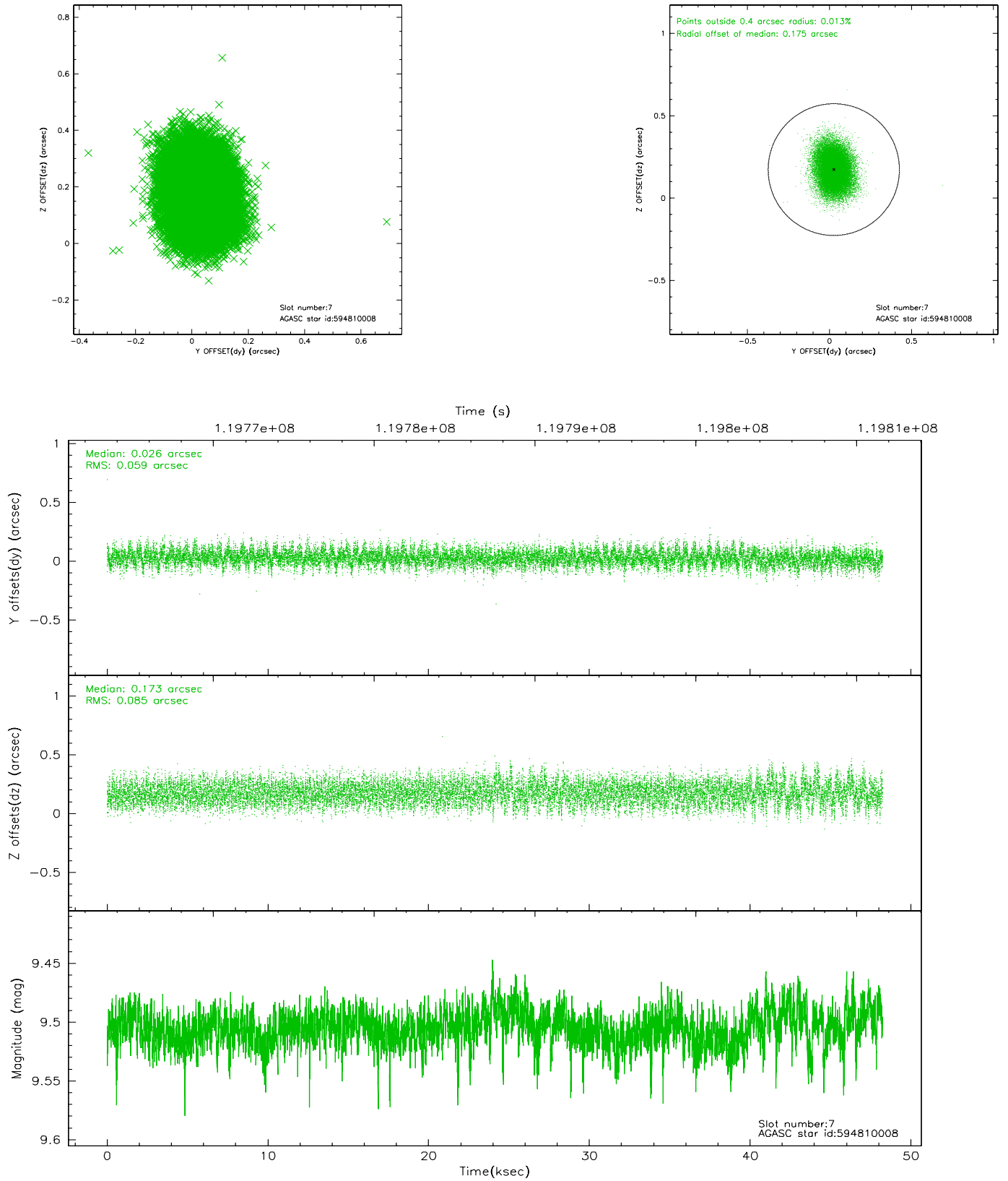
2.4.3 Slot 5



2.4.4 Slot 6

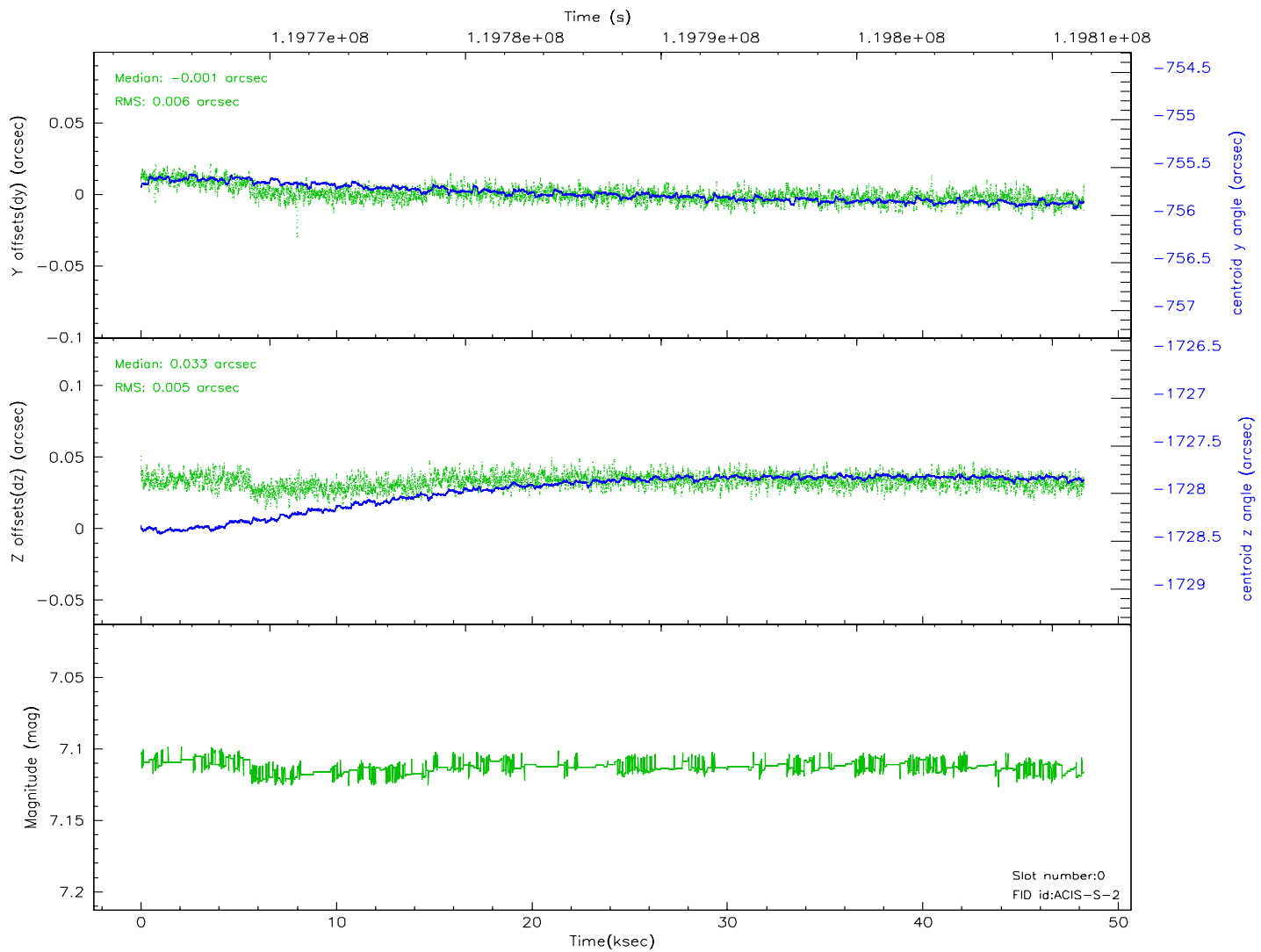
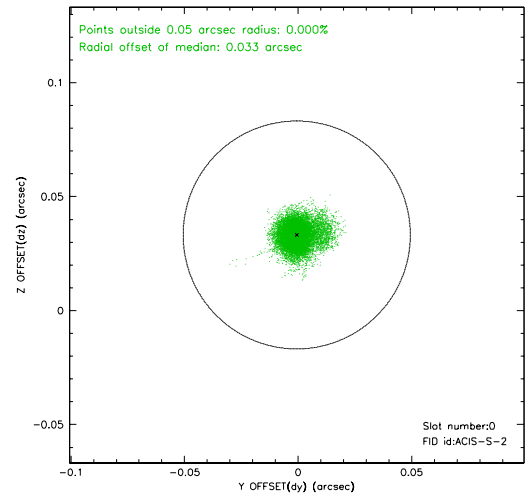
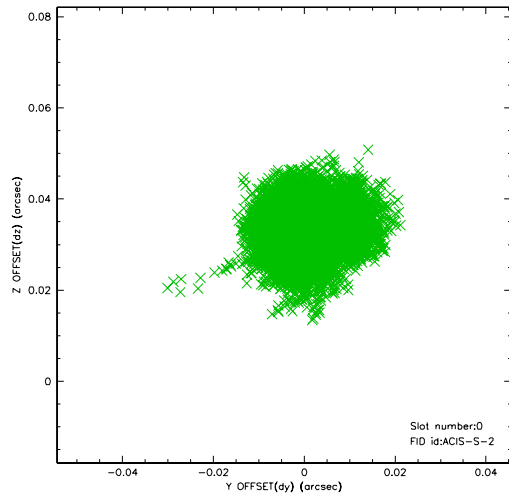


2.4.5 Slot 7

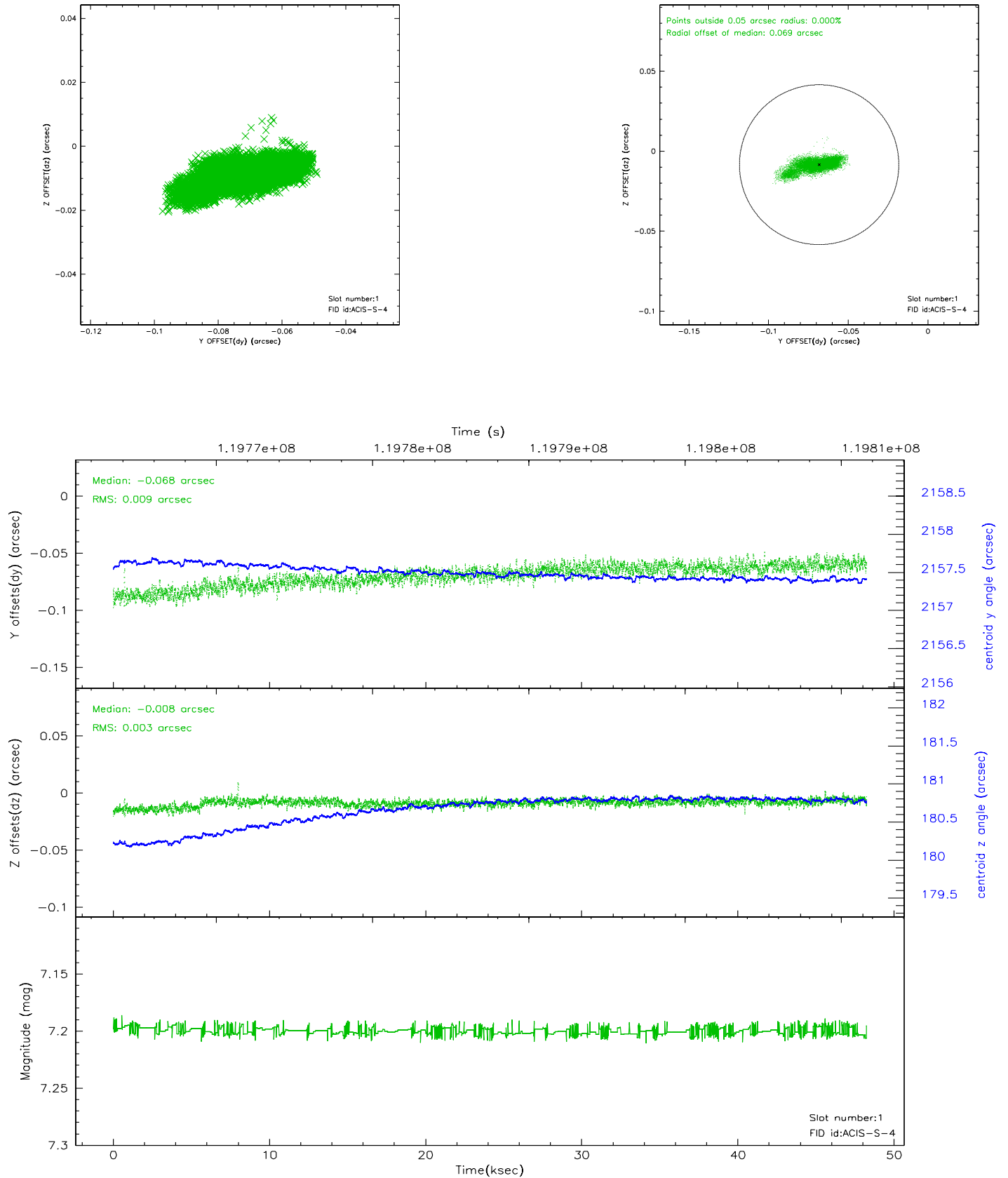


2.5 FID Slots

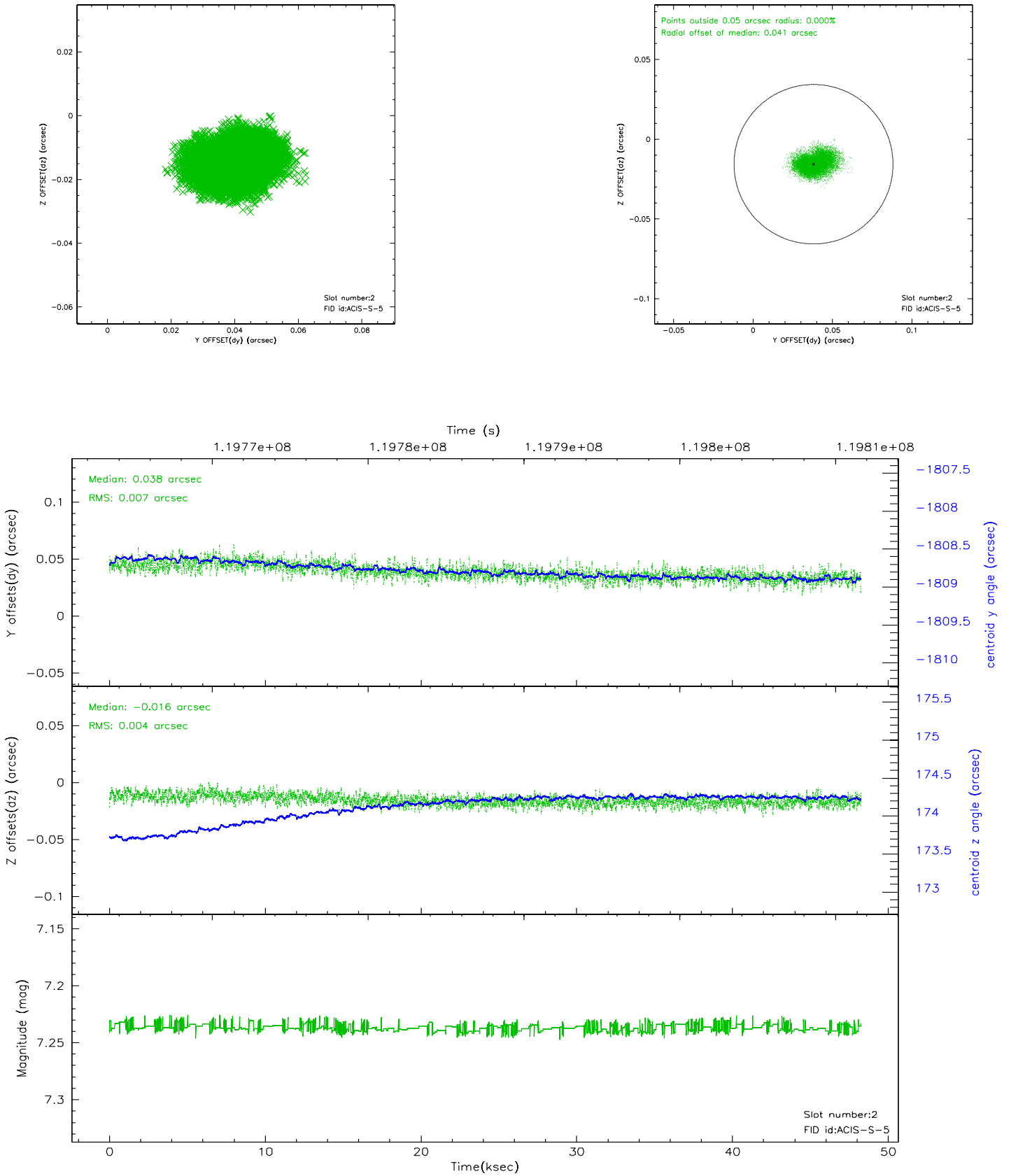
2.5.1 Slot 0



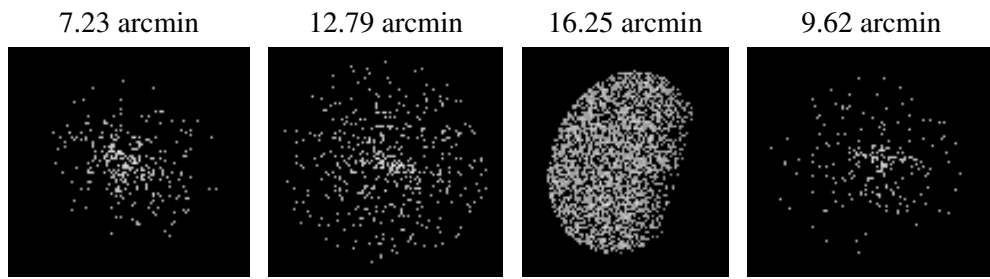
2.5.2 Slot 1



2.5.3 Slot 2



3 Point Sources



A Summary

A.1 Status

V&V Scientist	Jen Lauer
V&V Date (YYYY-MM-DD)	2007.01.10
V&V Edition	1
V&V Disposition and Status	OK
V&V Charge Time	47.939

A.2 Comments