

V&V Reference Report

L2 ASCDS Version : 7.6.9

Observation 1590 - L2 Version 001
Chandra X-Ray Center

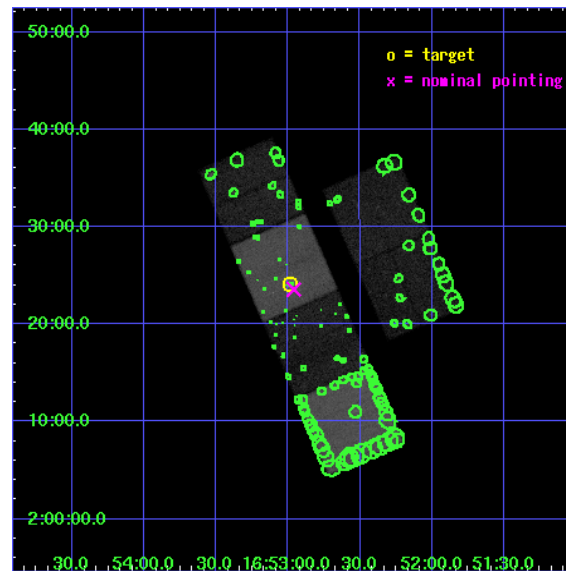
L2 Processing Date : Dec 15 2006

Contents

1	Front	2
2	OBI	3
2.1	OBI	3
2.1.1	Images	3
2.1.2	Bias	3
2.1.3	Parameters	4
2.1.4	Events	4
2.2	Compared Parameters	5
2.3	Aspect	6
2.4	Star Slots	9
2.4.1	Slot 3	9
2.4.2	Slot 4	10
2.4.3	Slot 5	11
2.4.4	Slot 6	12
2.4.5	Slot 7	13
2.5	FID Slots	14
2.5.1	Slot 0	14
2.5.2	Slot 1	15
2.5.3	Slot 2	16
3	Point Sources	17
A	Summary	18
A.1	Status	18
A.2	Comments	18

1 Front

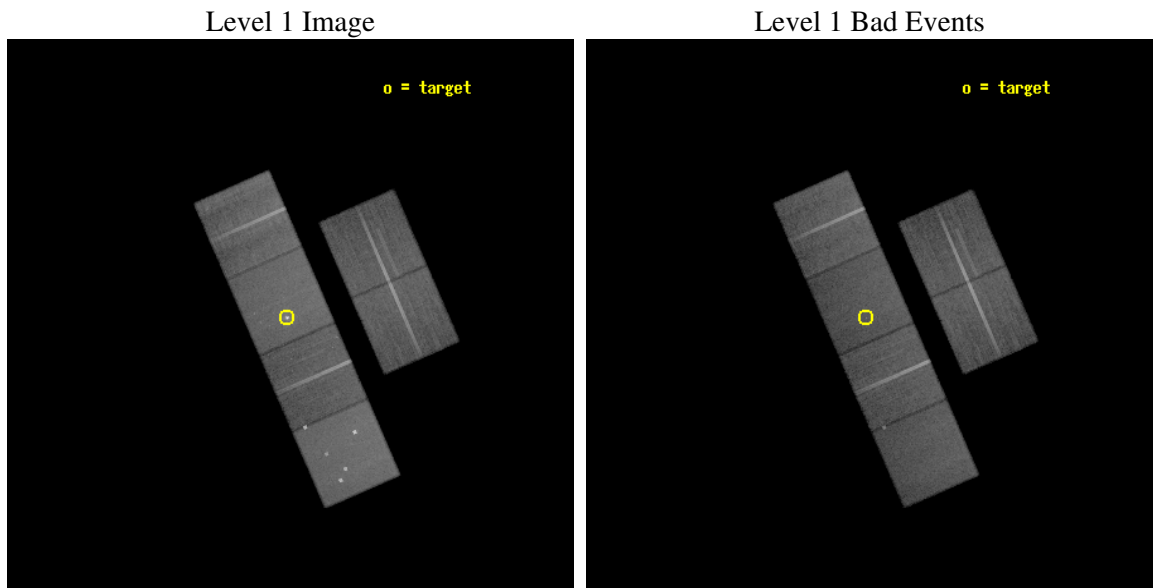
seq_num	700206
obs_id	1590
title	THE EXCEPTIONAL X-RAY PROPERTIES OF THE ULIRG NGC 6240
observer	Dr. Peter Predehl
object	NGC 6240
dtcycle	0
cycle	P
ra_targ	253.245417
dec_targ	2.400944
ra_nom	253.23997240462
dec_nom	2.3928491393887
roll_nom	246.37749622269
revision	2
ontime	37158.400034606
livetime	36687.877999266
ontime2	37158.400034606
ontime3	37158.400034606
ontime5	37158.400034606
ontime6	37158.400034606
ontime7	37158.400034606
ontime8	37158.400034606
l2events	394218



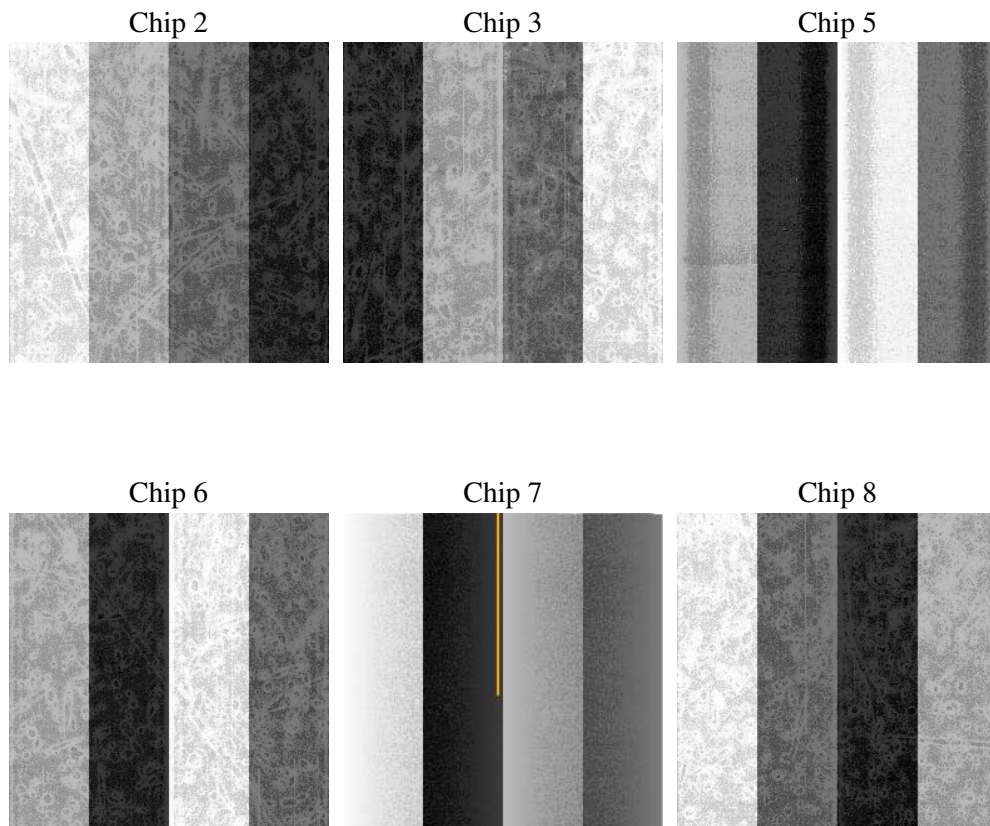
2 OBI

2.1 OBI

2.1.1 Images



2.1.2 Bias



2.1.3 Parameters

obi_num	2
ascdsver	7.6.9
caldsver	3.2.4
date	2006-12-15T23:54:26
revision	2

sched_exp_time	37000.000000
ontime	37323.356387779
ontime2	37323.356387779
ontime3	37323.356387779
ontime5	37323.356387779
ontime6	37323.356387779
ontime7	37323.356387779
ontime8	37323.356387779
l1events	1786859

2.1.4 Events

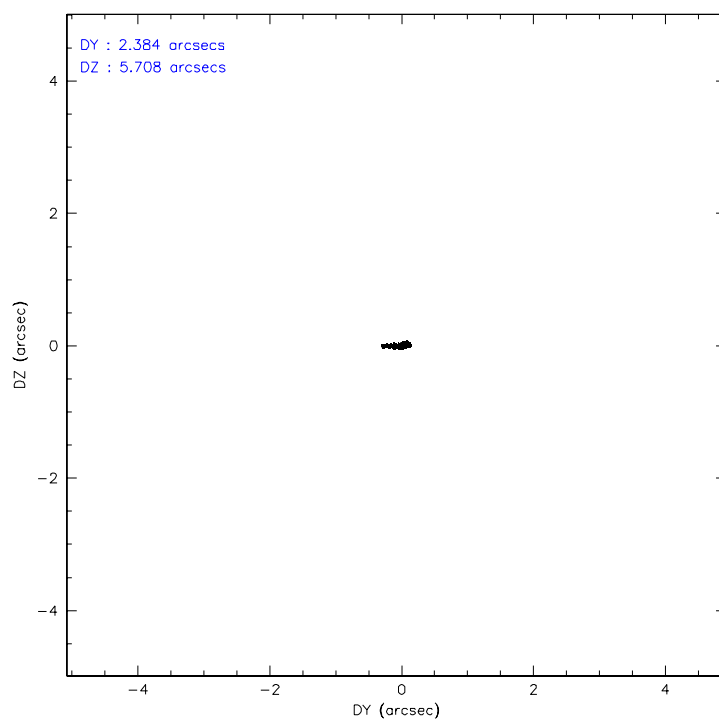
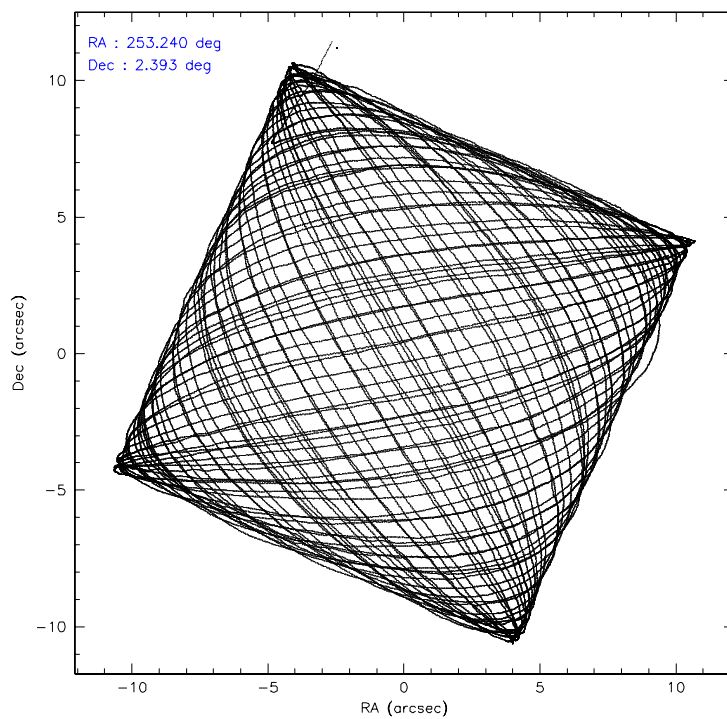
	ccd 2	ccd 3	ccd 5	ccd 6	ccd 7	ccd 8
level 1 events	258995	246151	366911	259572	337189	318041
rejected events	229803	216968	196289	227887	197072	252606
rejected %	88%	88%	53%	87%	58%	79%

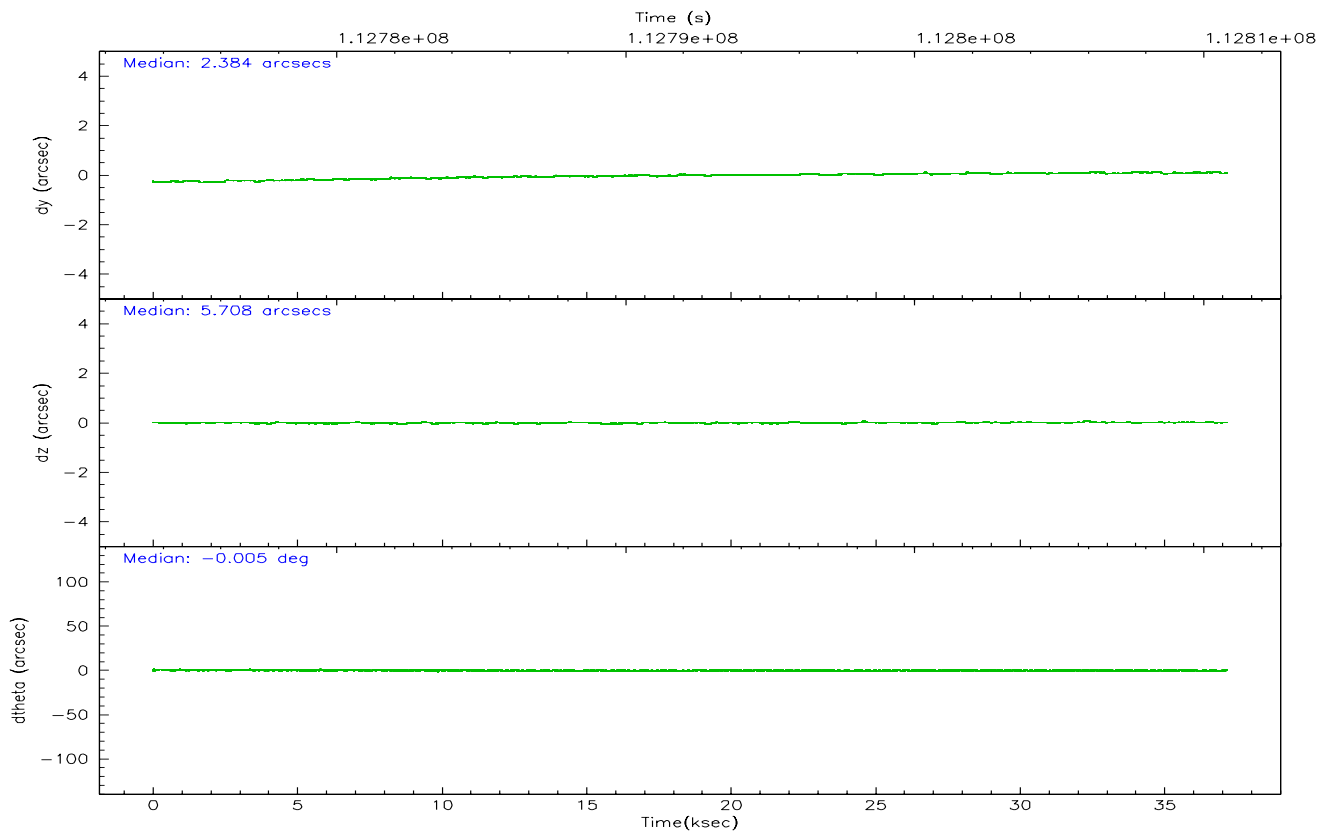
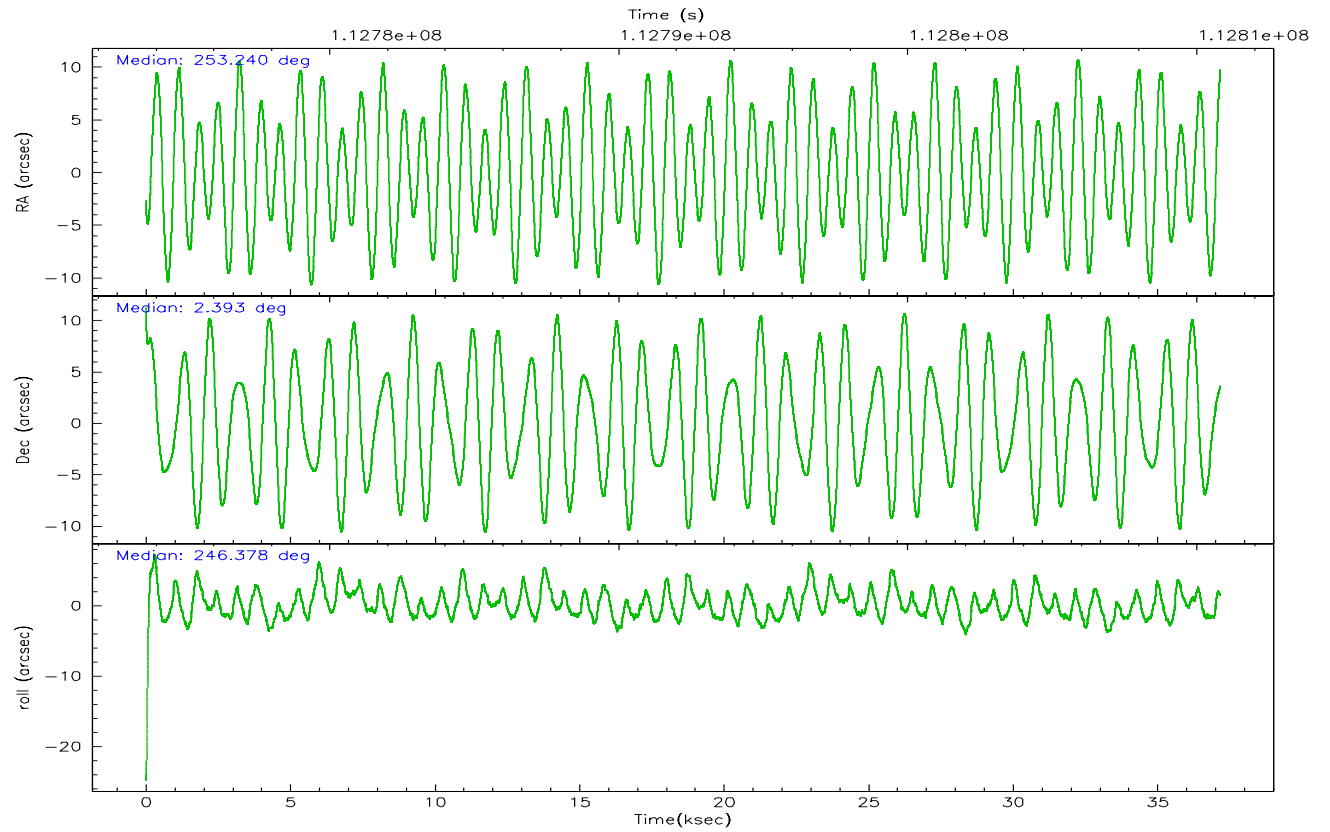
	ccd 2	ccd 3	ccd 5	ccd 6	ccd 7	ccd 8
grade 0 events	13050	13442	25865	14410	13630	22069
	5%	5%	7%	5%	4%	6%
grade 1 events	112	108	714	126	200	181
	0%	0%	0%	0%	0%	0%
grade 2 events	6072	5554	49252	5956	34944	14083
	2%	2%	13%	2%	10%	4%
grade 3 events	2639	2661	4210	2916	8778	6661
	1%	1%	1%	1%	2%	2%
grade 4 events	2698	2777	4011	2952	8528	6182
	1%	1%	1%	1%	2%	1%
grade 5 events	8883	9577	17259	10539	21763	13473
	3%	3%	4%	4%	6%	4%
grade 6 events	4861	4908	88048	5577	74870	16732
	1%	1%	23%	2%	22%	5%
grade 7 events	220680	207124	177552	217096	174476	238660
	85%	84%	48%	83%	51%	75%

2.2 Compared Parameters

Parameter	Planned	Actual	Parameter	Planned	Actual
Instrument	ACIS	ACIS	Obspar format version number	6	6
Detector	ACIS-235678	ACIS-235678	Obspar file type	PREDICTED	ACTUAL
Grating	NONE	NONE	Obspar update status	NONE	UPDATED
Data mode	FAINT	FAINT	Number of optional ACIS chips dropped	0	0
Observation mode	POINTING	POINTING	On-chip summing requested	N	N
Pointing RA	253.236644	253.239972404615	Subarray requested	NONE	NONE
Pointing Dec	2.419924	2.392849139388728	Alternating exposures requested	N	N
Pointing Roll	246.221020	246.3774962226915	Primary exposure time	0.000000	3.2
SIM focus pos (mm)	-0.684267	-0.6828225247311905			
SIM defocus (mm)	0	0.001444936568705701			
SIM translation stage pos (mm)	-190.132523	-190.1400660498719			
SIM translation stage offset (mm)	0	0.00754346686406393			
Observation start time	112773808.184000	112772662.62719			
Observation start date	2001-07-29T06:02:24	2001-07-29T05:44:22			
Observation end time	112810808.184000	112811598.79122			
Observation end date	2001-07-29T16:19:04	2001-07-29T16:33:18			
Read mode	TIMED	TIMED			

2.3 Aspect



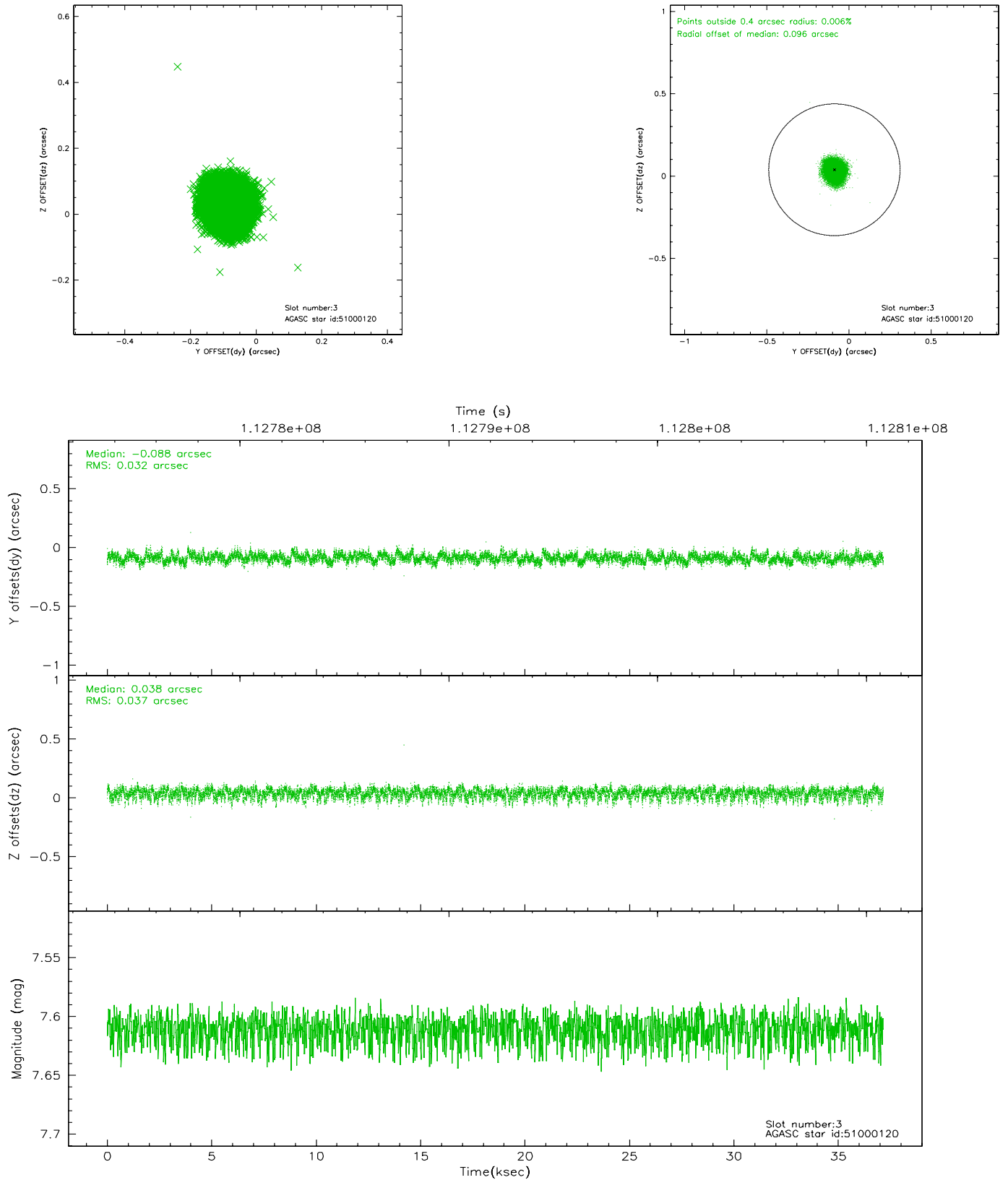


Slot Statistics

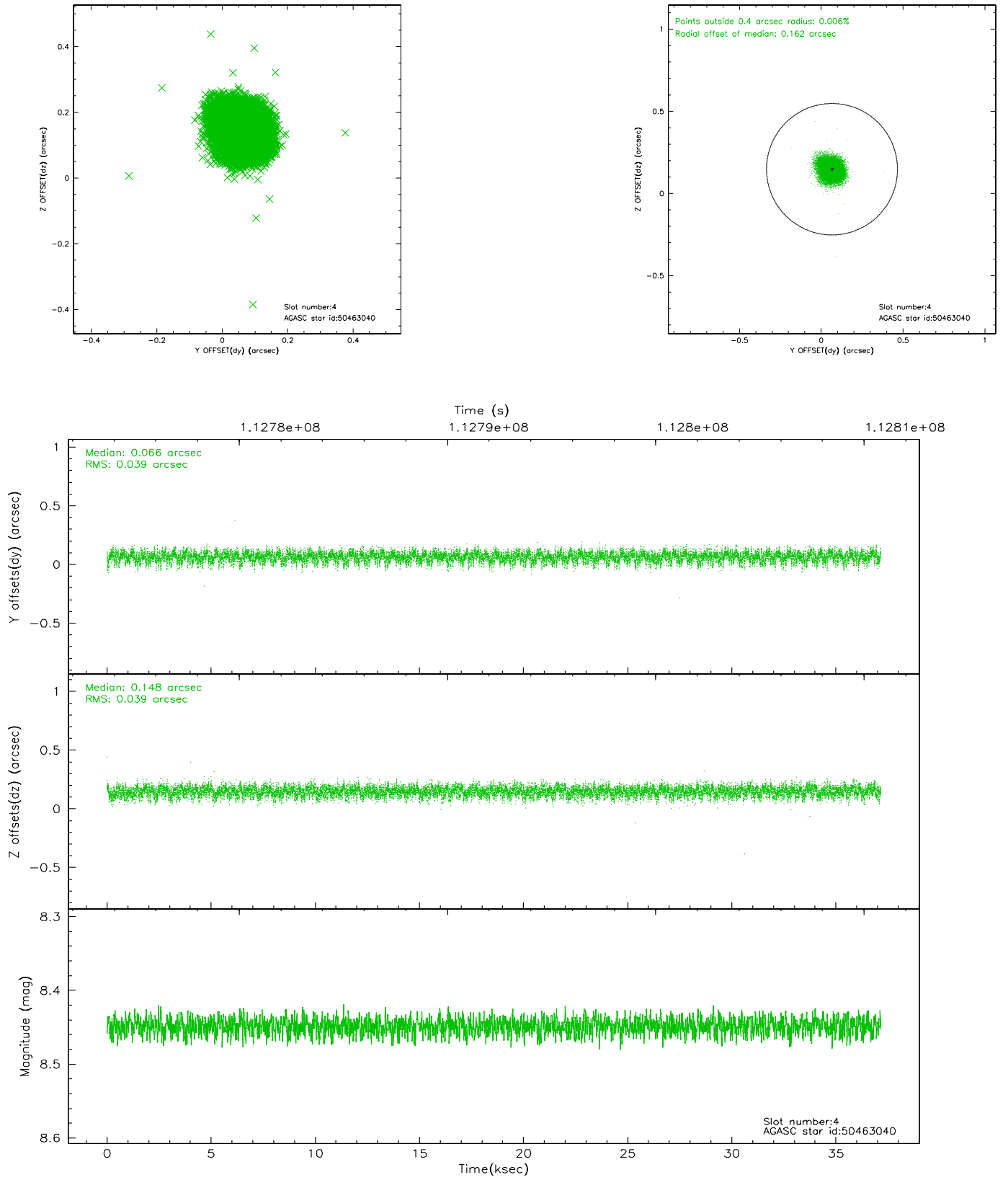
slot	status	id	mag	n_pts	med_dy	med_dz	dr1	dr2	ra	dec	mean_y	mean_z
0	FID	ACIS-S-2	7.11	9064	-0.031	0.020	0.007	0.012	0.000000	0.000000	-754.96	-1726.84
1	FID	ACIS-S-4	7.20	9062	-0.063	0.009	0.005	0.009	0.000000	0.000000	2158.22	181.68
2	FID	ACIS-S-5	7.24	9062	0.062	-0.021	0.006	0.011	0.000000	0.000000	-1807.72	175.25
3	GUIDE	51000120	7.61	18128	-0.088	0.038	0.053	0.084	253.311844	3.020755	-2088.00	-624.20
4	GUIDE	50463040	8.45	18126	0.066	0.148	0.058	0.094	253.537698	1.853522	1429.63	1814.06
5	GUIDE	50865824	8.87	18124	-0.159	-0.154	0.072	0.112	253.112876	3.039927	-1862.77	-1306.69
6	GUIDE	50987568	8.95	18127	0.020	-0.012	0.066	0.106	253.458665	2.495501	-570.60	621.43
7	GUIDE	50333200	9.04	18005	0.163	-0.018	0.083	0.134	252.978043	1.813597	2373.26	29.05

2.4 Star Slots

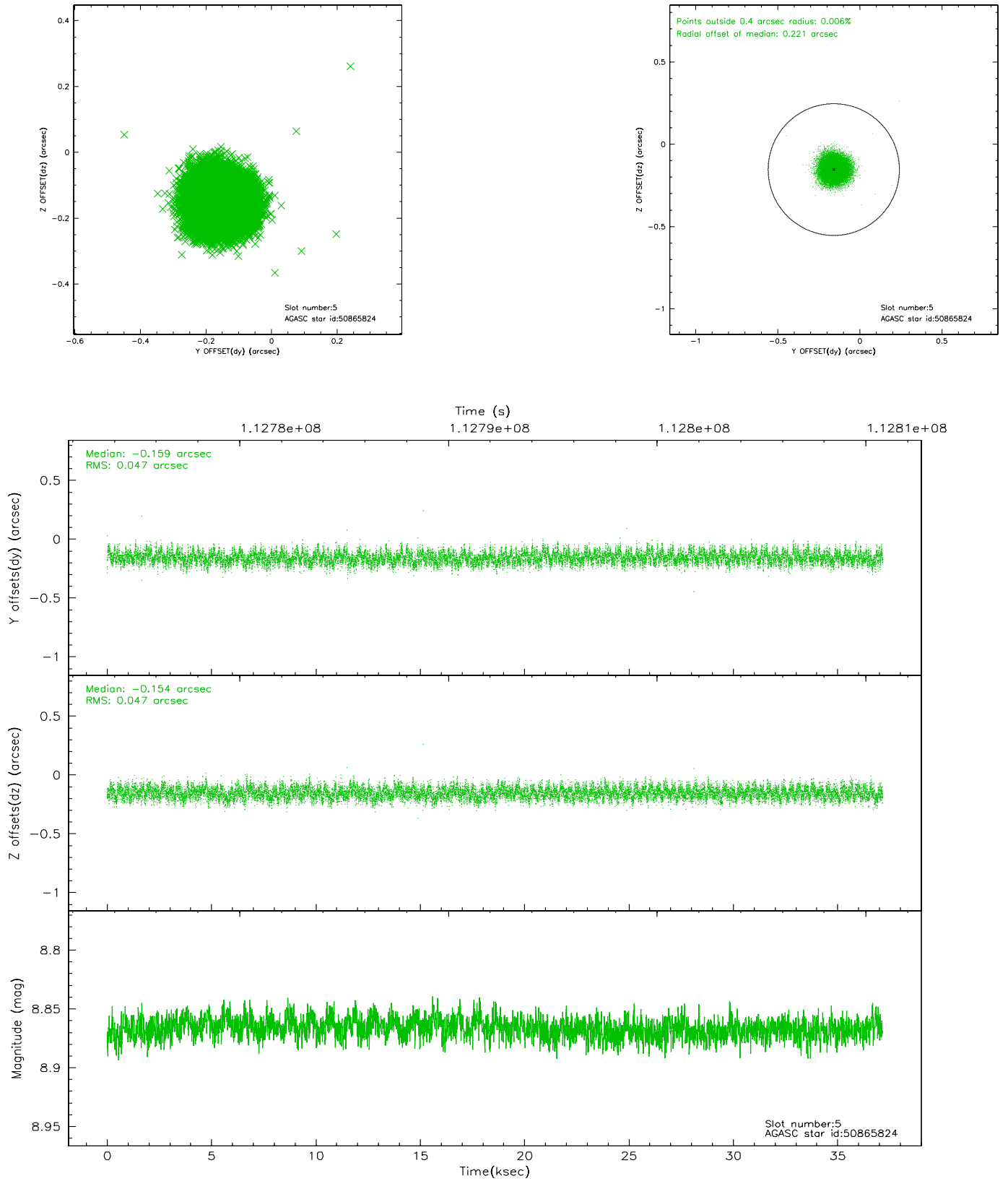
2.4.1 Slot 3



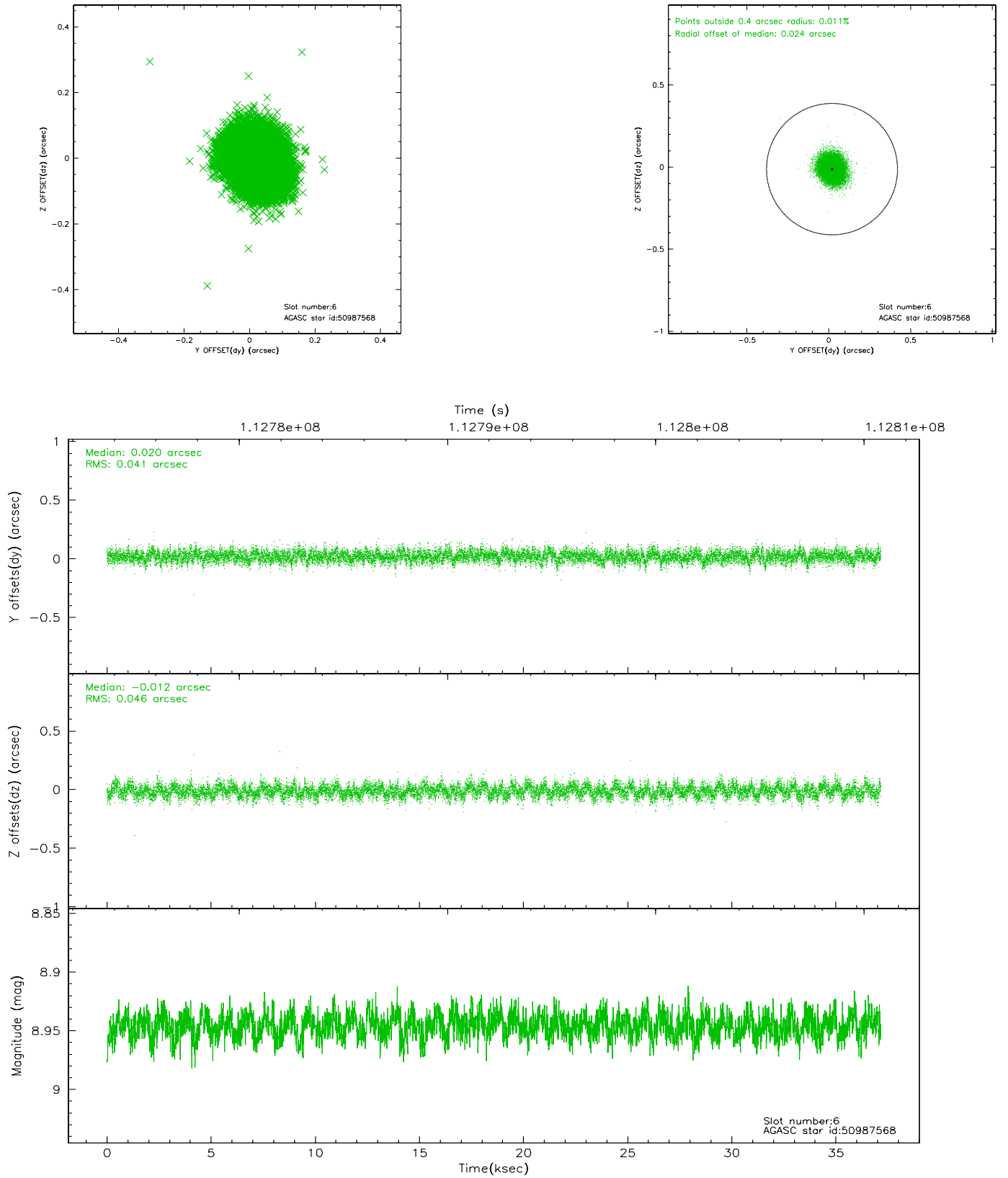
2.4.2 Slot 4



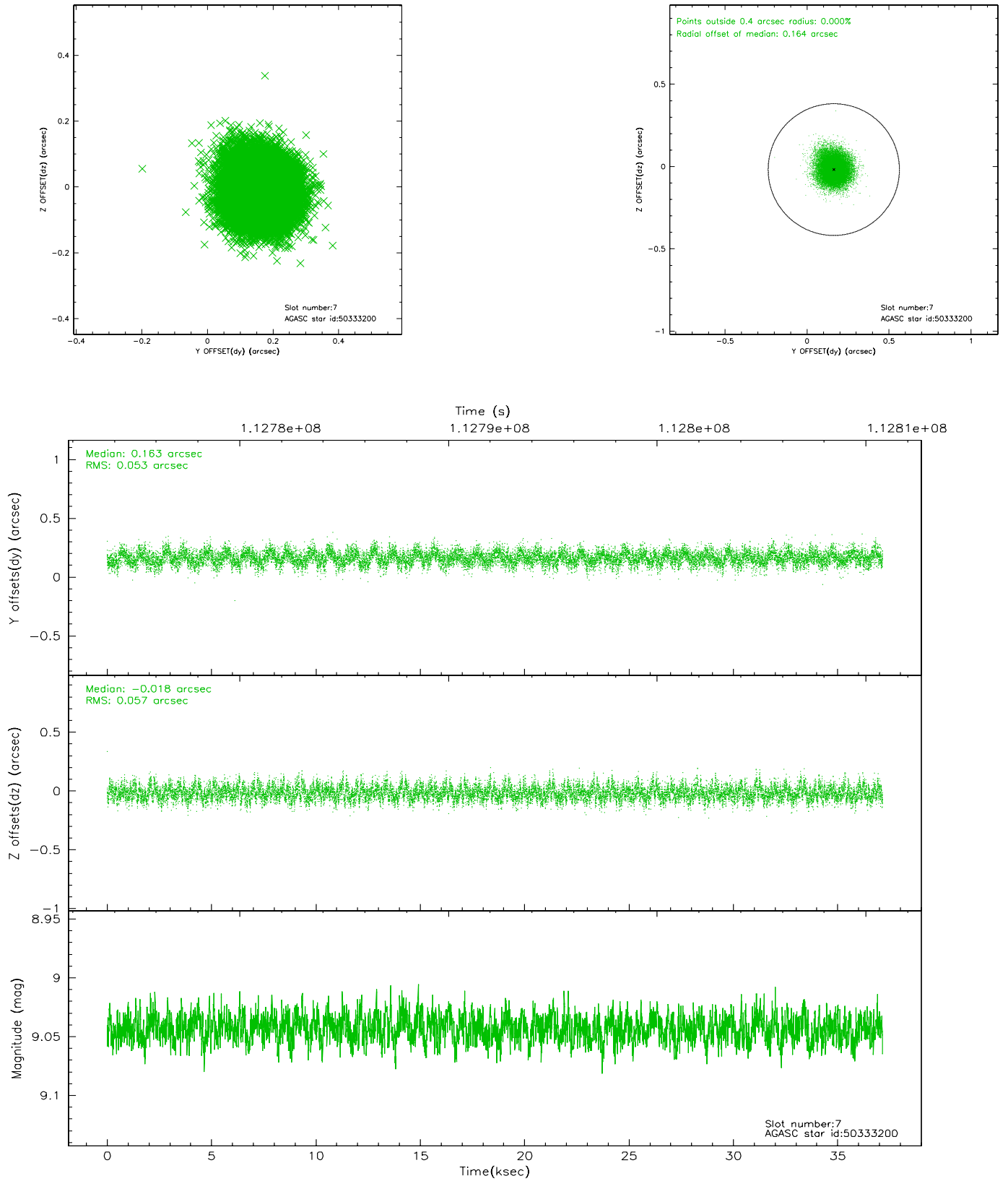
2.4.3 Slot 5



2.4.4 Slot 6

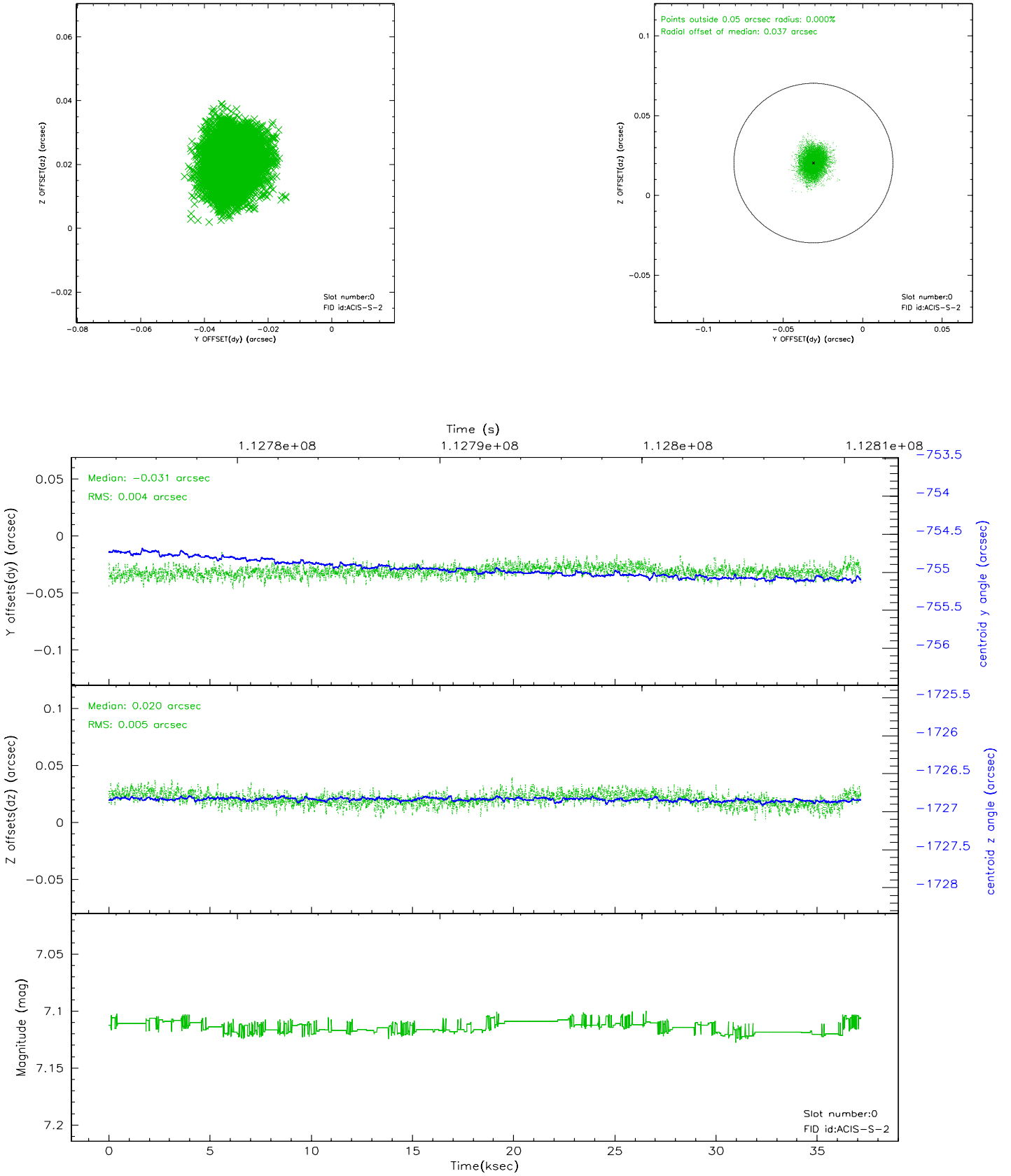


2.4.5 Slot 7

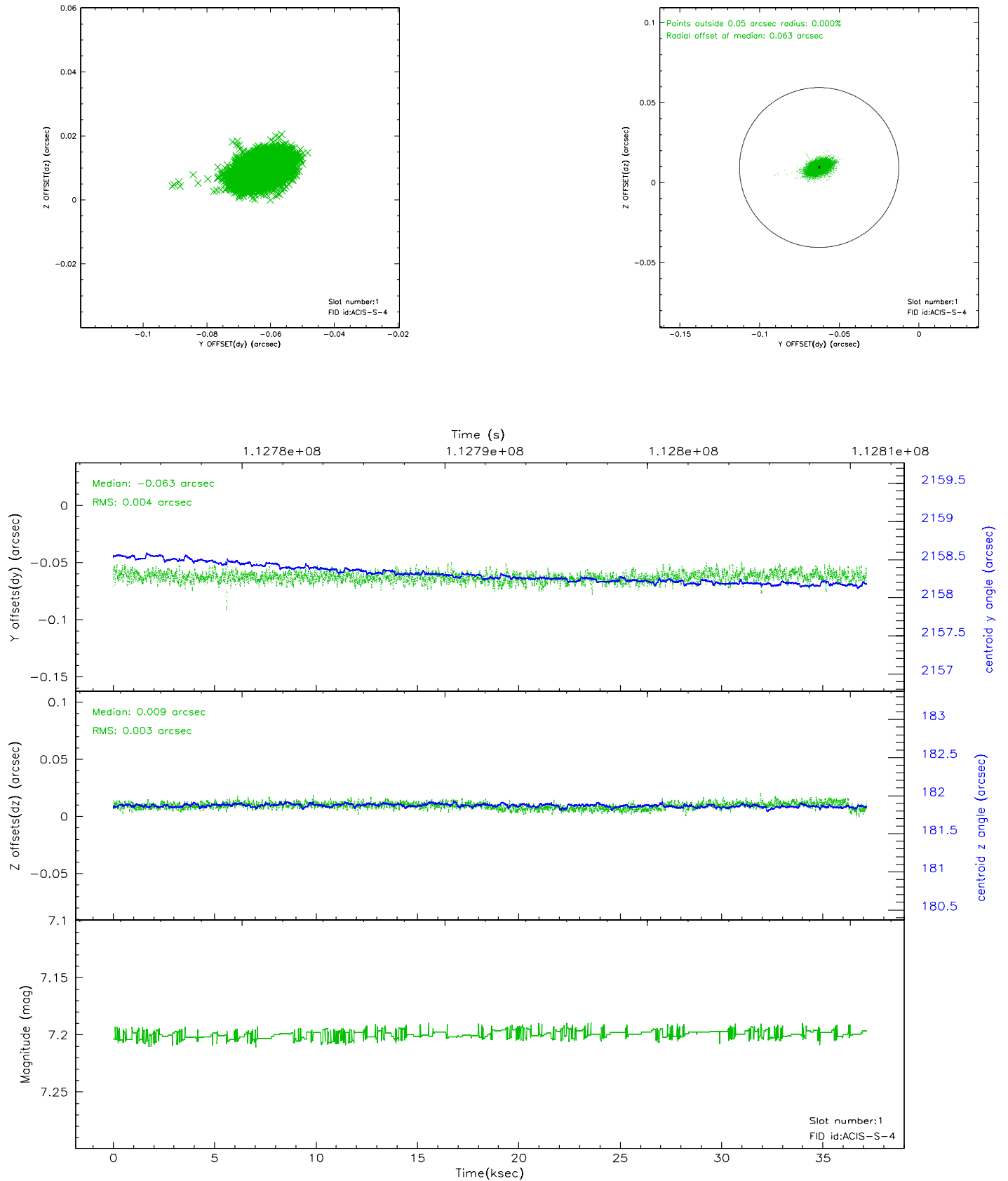


2.5 FID Slots

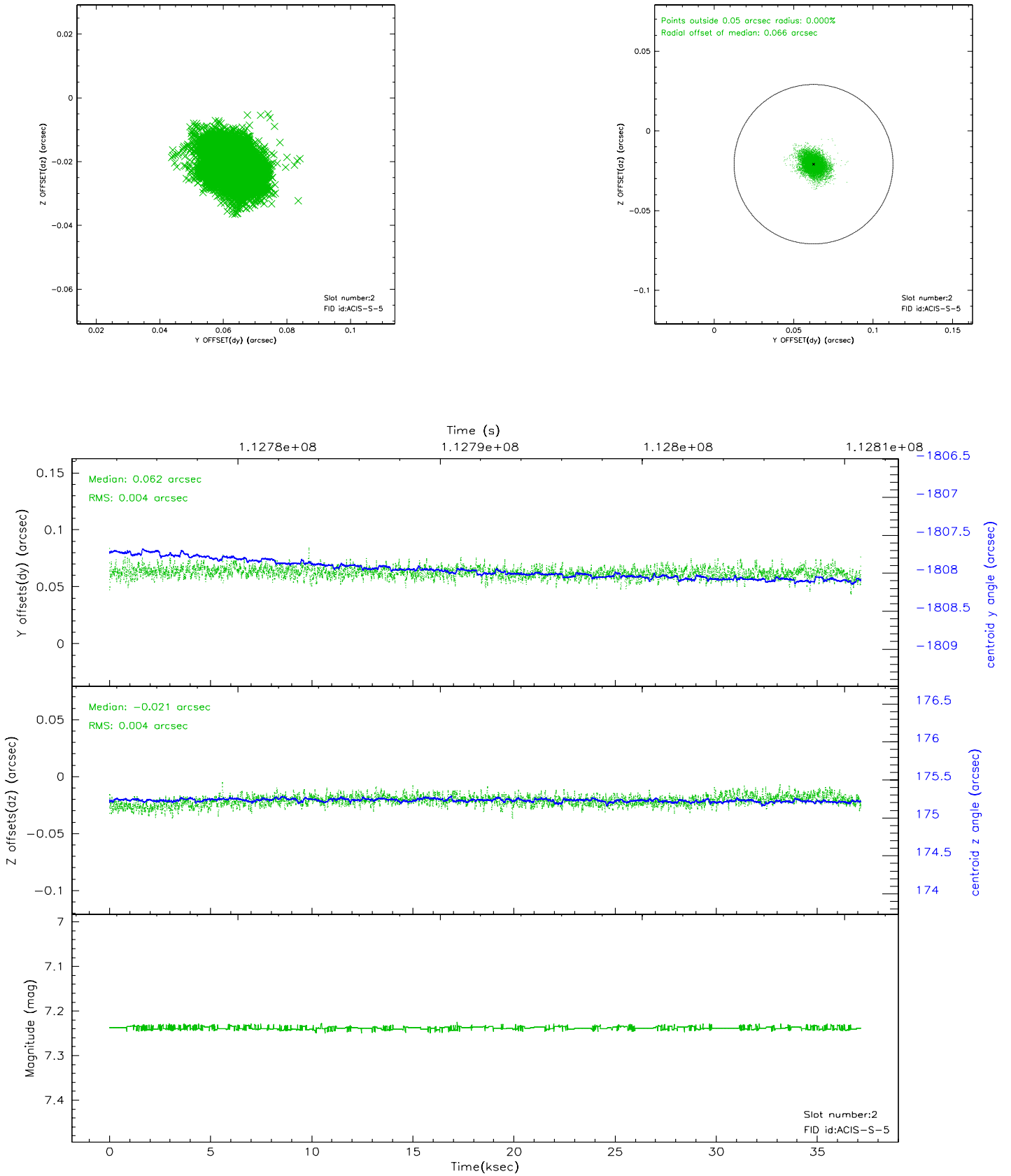
2.5.1 Slot 0



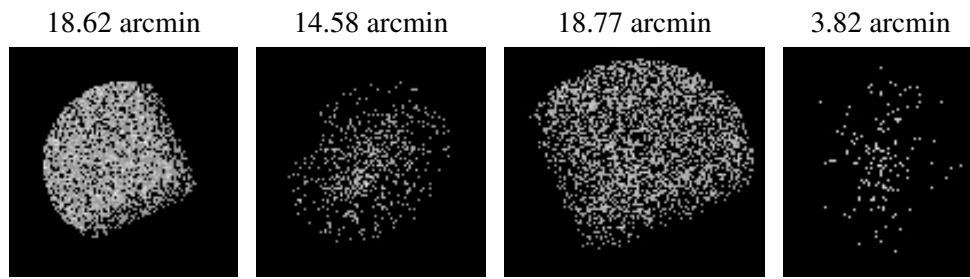
2.5.2 Slot 1



2.5.3 Slot 2



3 Point Sources



A Summary

A.1 Status

V&V Scientist	Beth Sundheim
V&V Date (YYYY-MM-DD)	2006.12.17
V&V Edition	1
V&V Disposition and Status	OK
V&V Charge Time	37.158

A.2 Comments