

V&V Reference Report

L2 ASCDS Version : 7.6.9

Observation 1589 - L2 Version 001
Chandra X-Ray Center

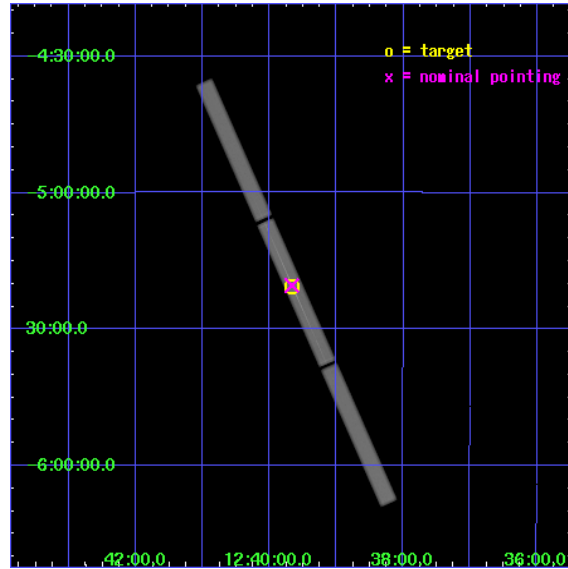
L2 Processing Date : Nov 9 2006

Contents

1	Front	2
2	OBI	3
2.1	OBI	3
2.1.1	Images	3
2.1.2	Parameters	4
2.1.3	Events	4
2.2	Compared Parameters	5
2.3	Aspect	6
2.4	Star Slots	9
2.4.1	Slot 3	9
2.4.2	Slot 4	10
2.4.3	Slot 5	11
2.4.4	Slot 6	12
2.4.5	Slot 7	13
2.5	FID Slots	14
2.5.1	Slot 0	14
2.5.2	Slot 1	15
2.5.3	Slot 2	16
3	Gratings	17
3.1	LETG Arm	17
A	Summary	19
A.1	Status	19
A.2	Comments	19

1 Front

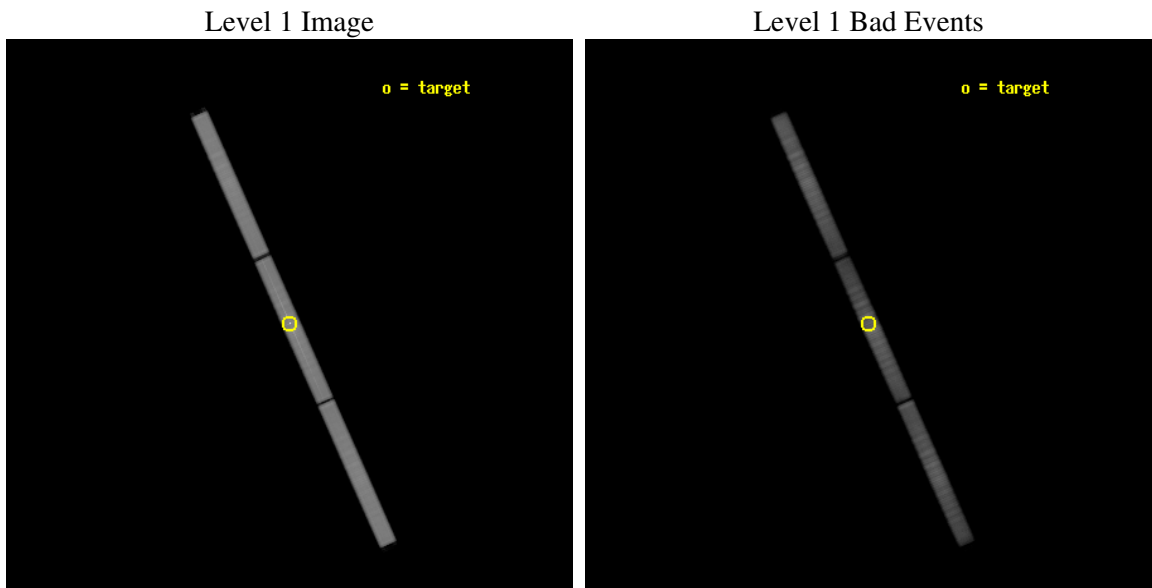
seq_num	700205
obs_id	1589
title	SOFT X-RAY ABSORPTION IN NGC 4593
observer	DR. ALBERT BRINKMAN
object	NGC 4593
ra_targ	189.914583
dec_targ	-5.344306
ra_nom	189.91673145937
dec_nom	-5.3399728606532
roll_nom	65.880317920557
revision	3
ontime	107982.98541385
livetime	107395.5276208
l2events	4234515



2 OBI

2.1 OBI

2.1.1 Images



2.1.2 Parameters

obi_num	0
ascdsver	7.6.9
caldbver	3.2.3
date	2006-11-08T23:32:36
revision	3

sched_exp_time	108000.000000
ontime	108062.67916693
l1events	6621606

2.1.3 Events

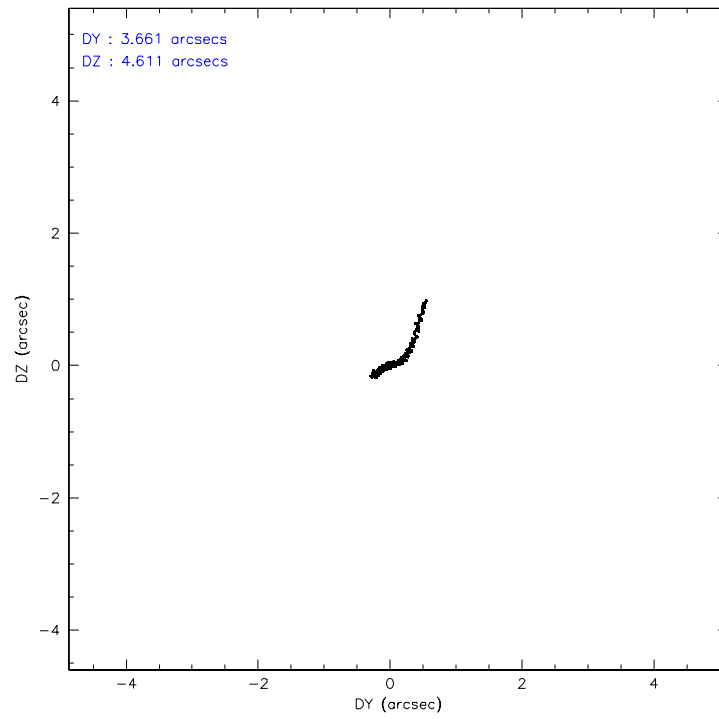
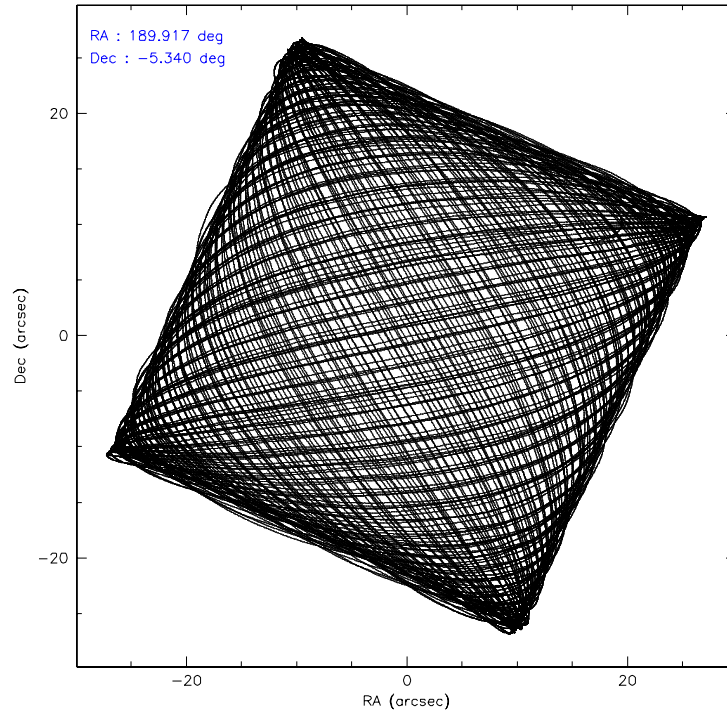
Level 1 Events

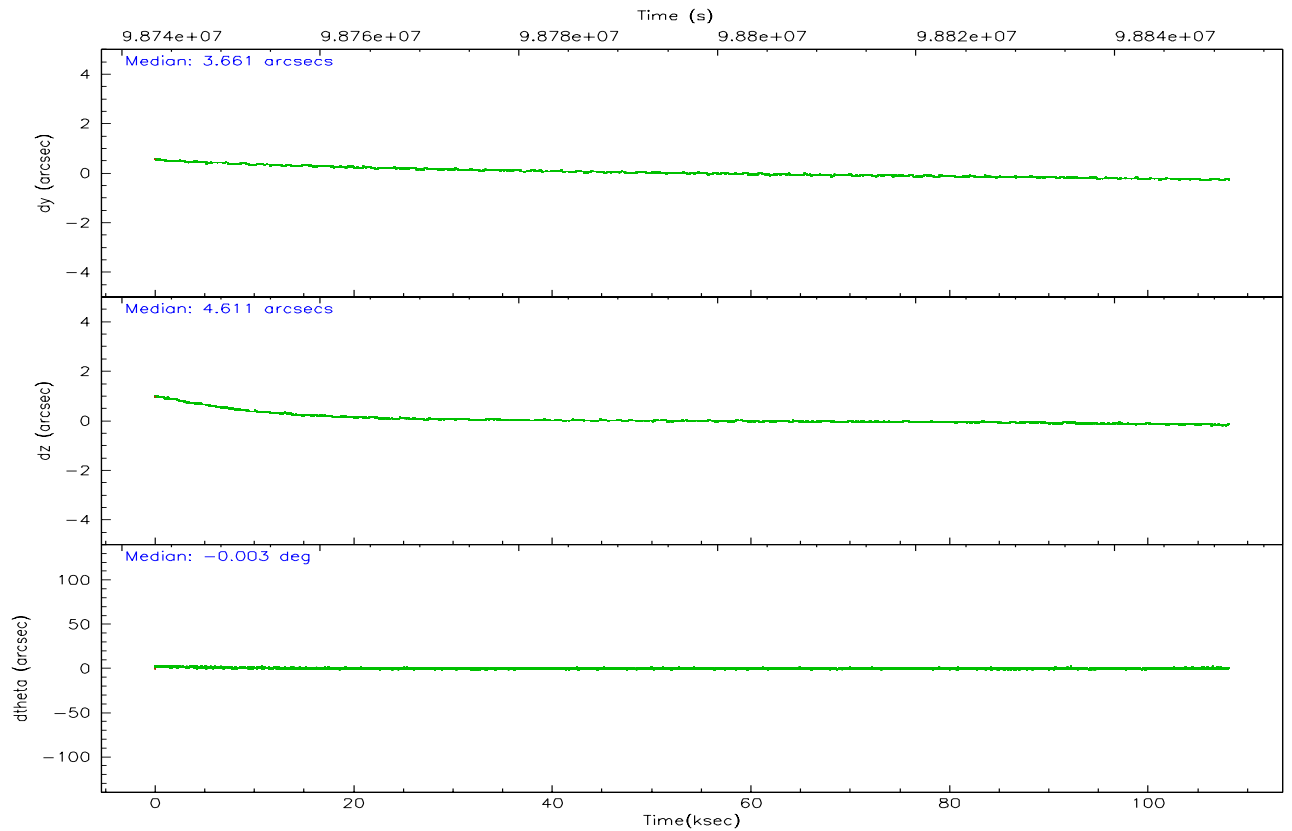
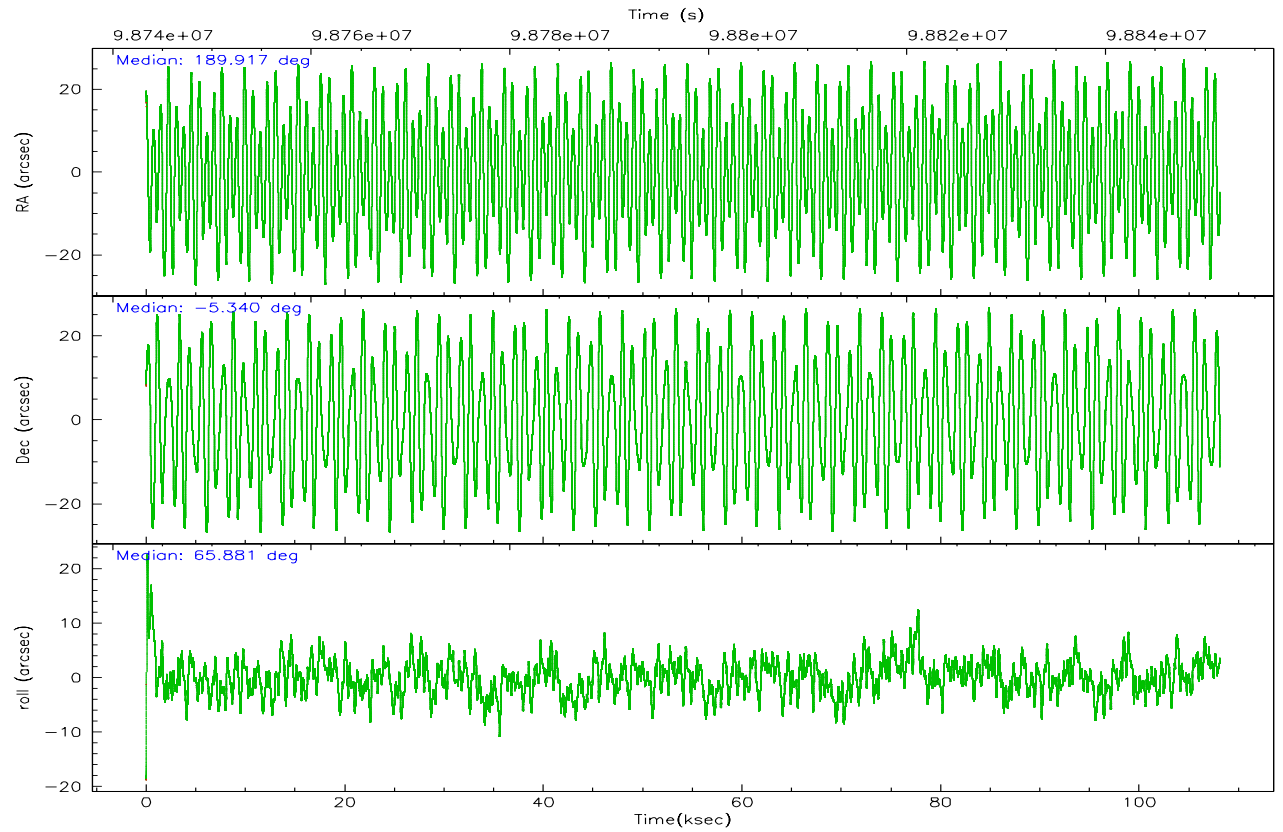
	segment 1	segment 2	segment 3
level 1 events	2194687	2229070	2197849
rejected events	547344	582144	659549
rejected %	24%	26%	30%

2.2 Compared Parameters

Parameter	Planned	Actual	Parameter	Planned	Actual
Instrument	HRC	HRC	Obspar format version number	6	6
Detector	HRC-S	HRC-S	Obspar file type	PREDICTED	ACTUAL
Grating	LETG	LETG	Obspar update status	NONE	UPDATED
Data mode	OBSERVING	OBSERVING			
Observation mode	POINTING	POINTING			
Pointing RA	189.920986	189.9167314593685			
Pointing Dec	-5.368360	-5.339972860653171			
Pointing Roll	65.813381	65.88031792055735			
SIM focus pos (mm)	-1.429586	-1.428180813131781			
SIM defocus (mm)	0.1037507710433287	0.1051558262725154			
SIM translation stage pos (mm)	250.455976	250.466033080201			
SIM translation stage offset (mm)	0	-0.01005468664627074			
Observation start time	98743532.184000	98742604.556927			
Observation start date	2001-02-16T20:44:28	2001-02-16T20:30:04			
Observation end time	98851532.184000	98853396.29869901			
Observation end date	2001-02-18T02:44:28	2001-02-18T03:16:36			

2.3 Aspect



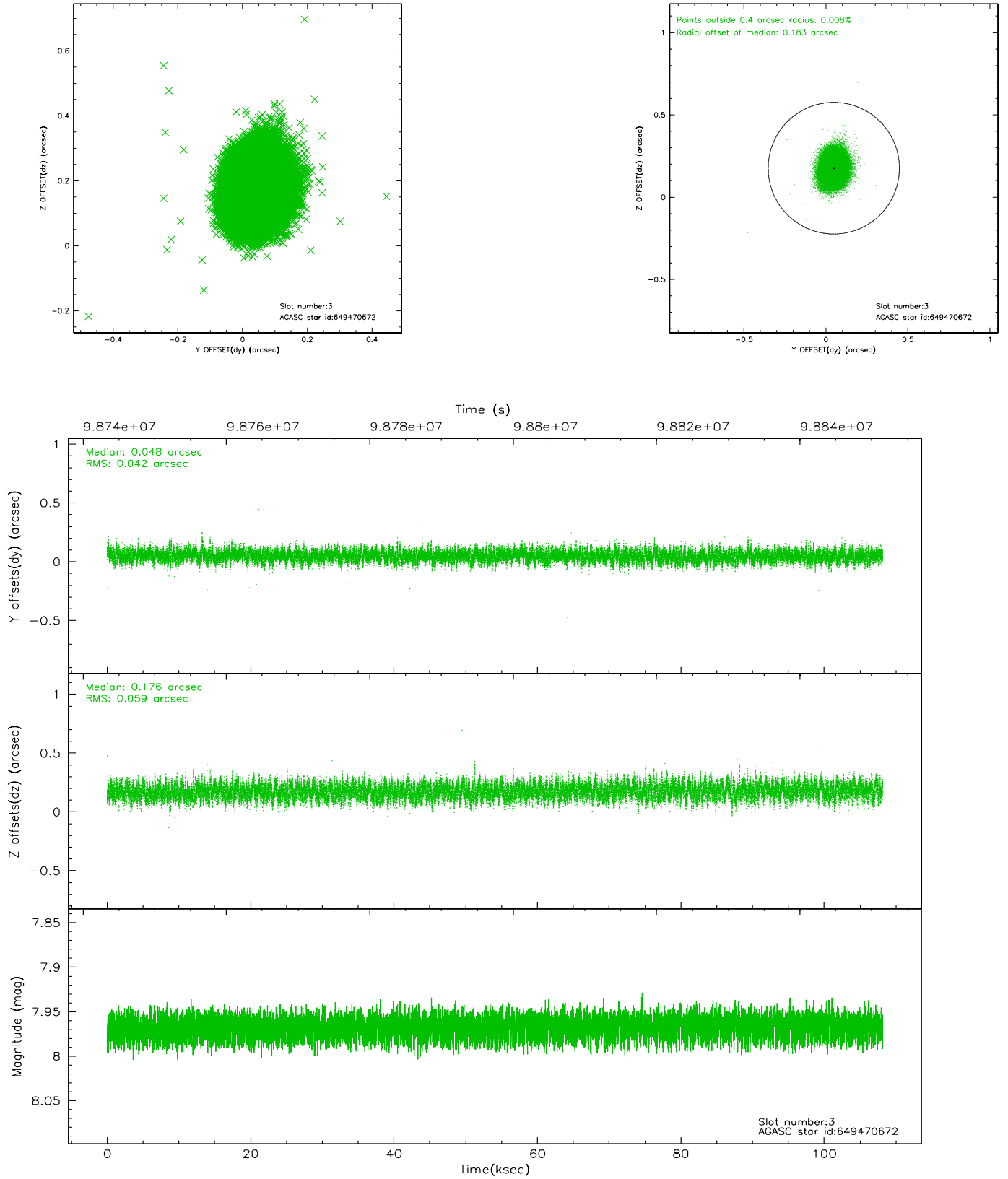


Slot Statistics

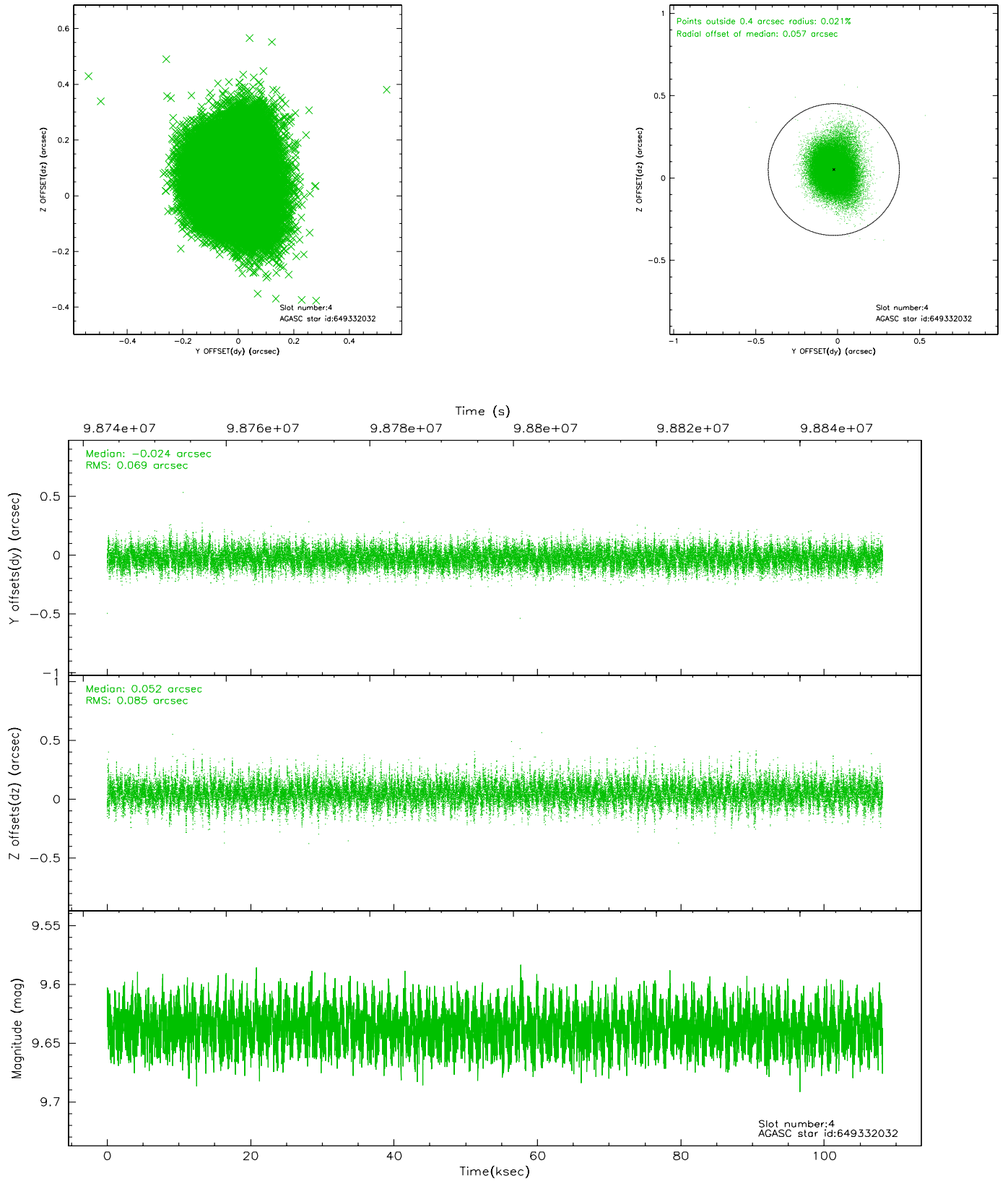
slot	status	id	mag	n_pts	med_dy	med_dz	dr1	dr2	ra	dec	mean_y	mean_z
0	FID	HRC-S-1	6.98	26381	0.158	-0.160	0.008	0.015	0.000000	0.000000	-1157.75	-453.18
1	FID	HRC-S-2	6.98	26382	0.079	-0.091	0.005	0.010	0.000000	0.000000	1241.81	-445.80
2	FID	HRC-S-3	7.01	26382	0.153	-0.051	0.008	0.014	0.000000	0.000000	-1160.41	576.44
3	GUIDE	649470672	7.97	52759	0.048	0.176	0.077	0.124	190.035984	-5.984080	-1853.31	-1284.15
4	GUIDE	649332032	9.64	52736	-0.024	0.052	0.113	0.195	189.579865	-5.358550	-469.08	1129.20
5	GUIDE	649334320	10.14	52700	0.109	-0.020	0.156	0.271	189.479890	-5.779295	-1997.19	834.33
6	GUIDE	648943136	10.60	52700	-0.154	-0.072	0.212	0.436	189.602823	-4.592519	2079.76	2185.16
7	GUIDE	649331320	9.92	52742	0.029	-0.139	0.167	0.272	189.163588	-5.422718	-1292.10	2394.68

2.4 Star Slots

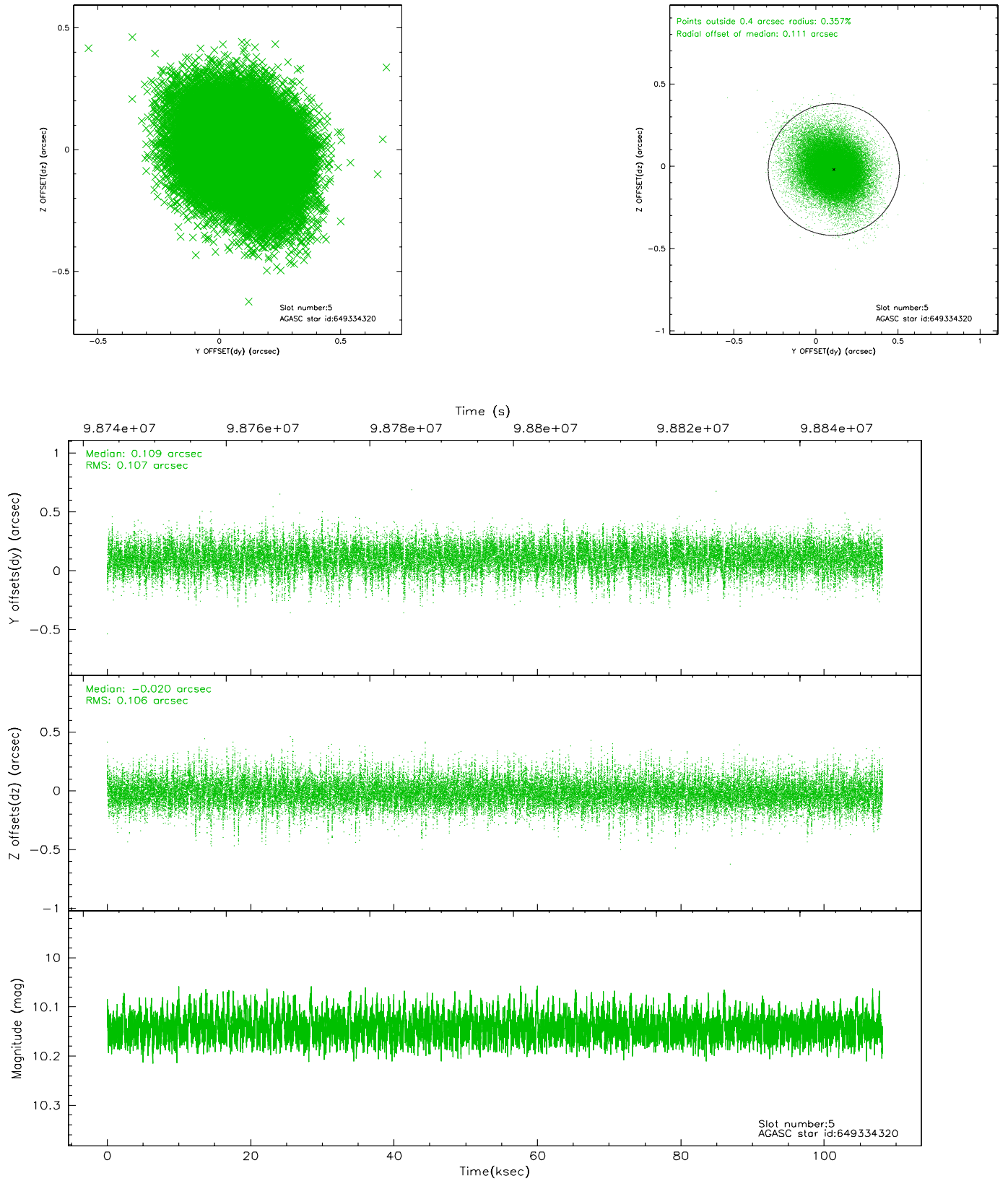
2.4.1 Slot 3



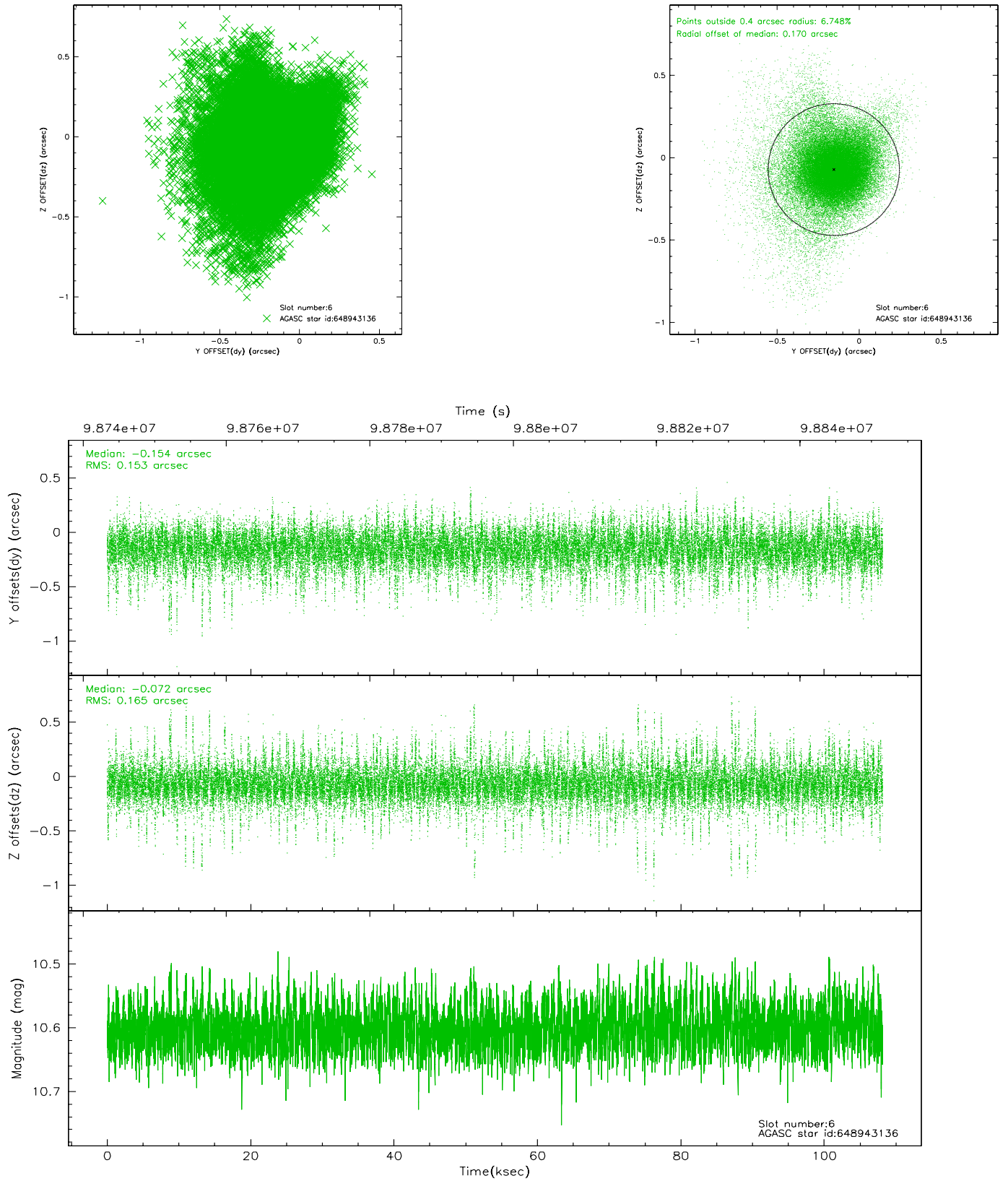
2.4.2 Slot 4



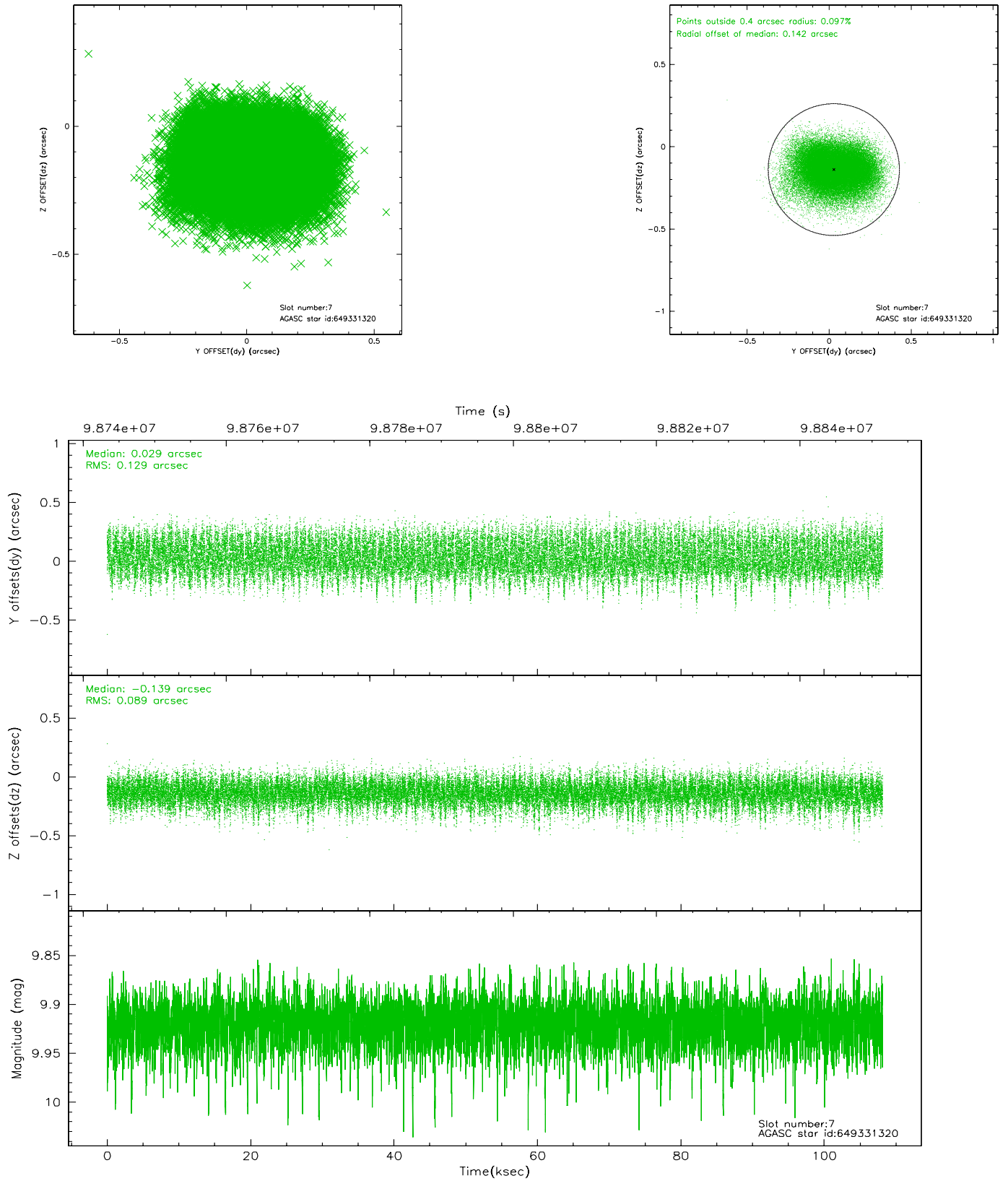
2.4.3 Slot 5



2.4.4 Slot 6

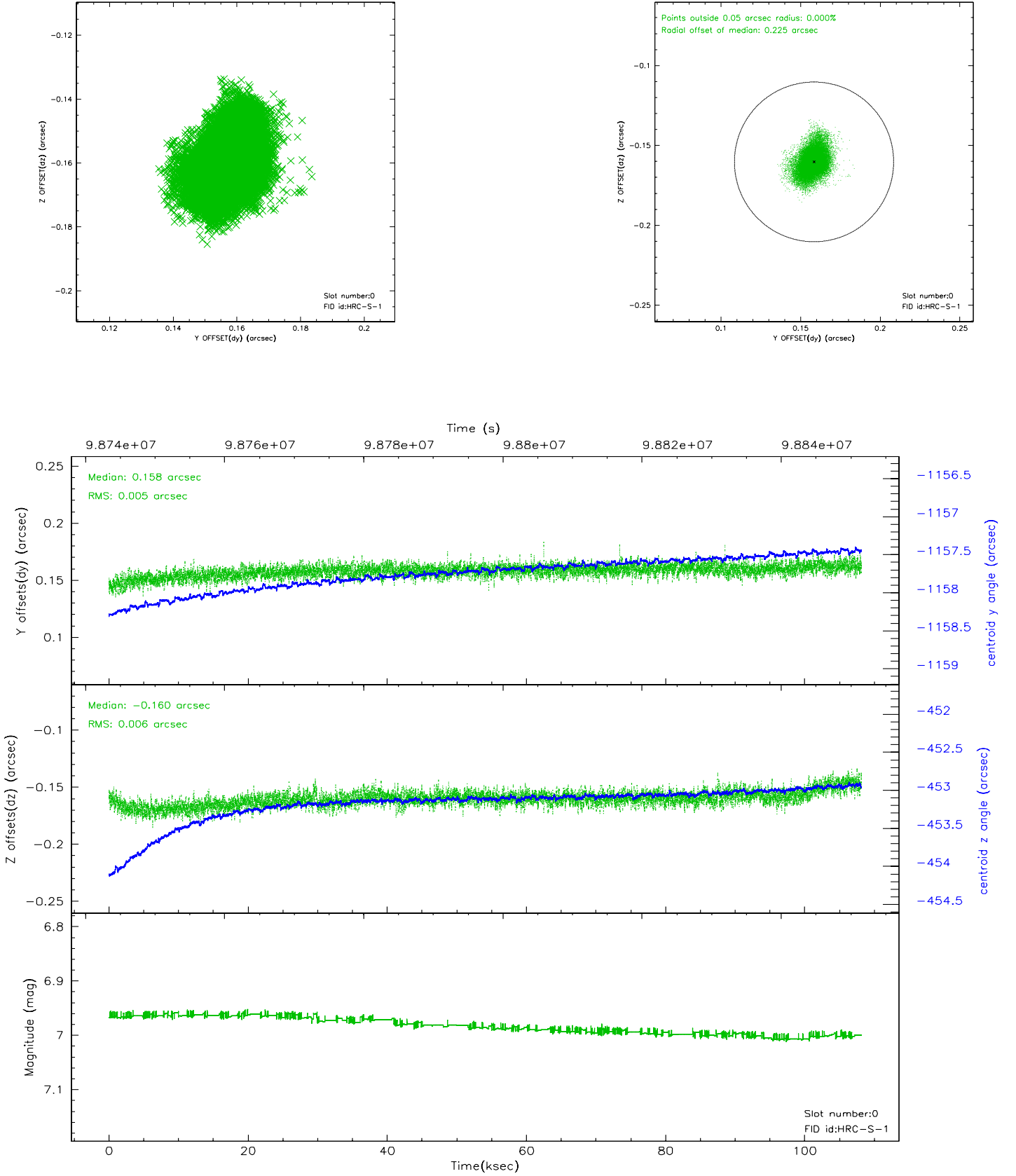


2.4.5 Slot 7

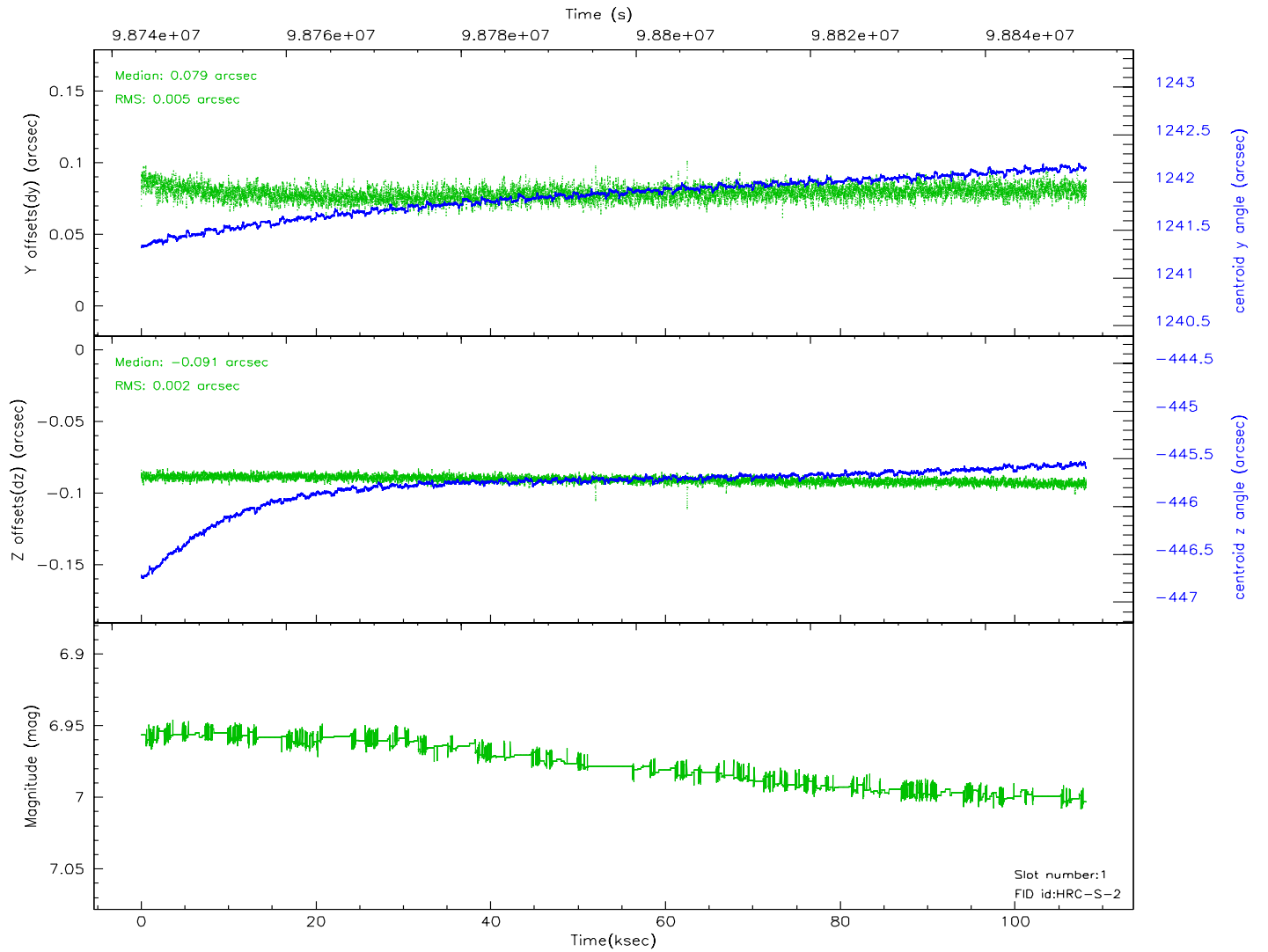
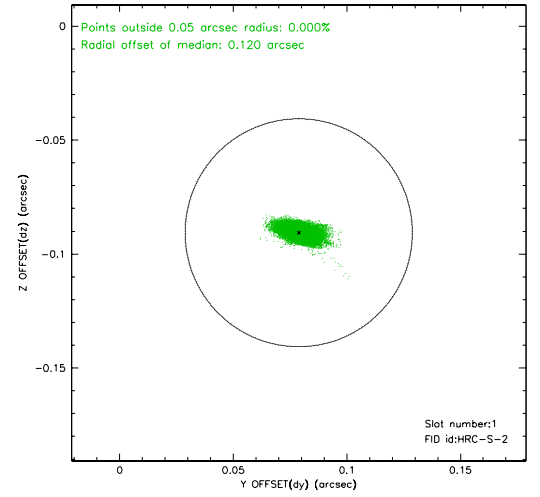
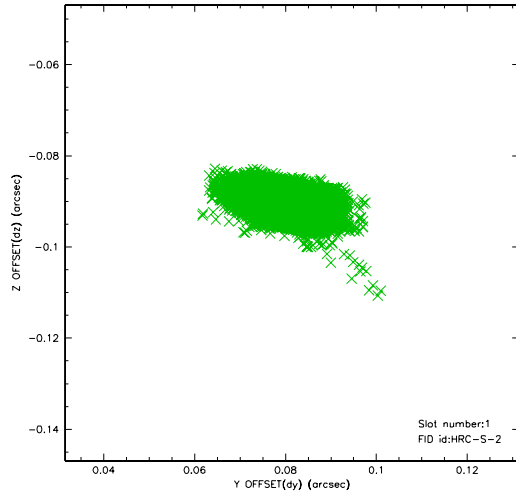


2.5 FID Slots

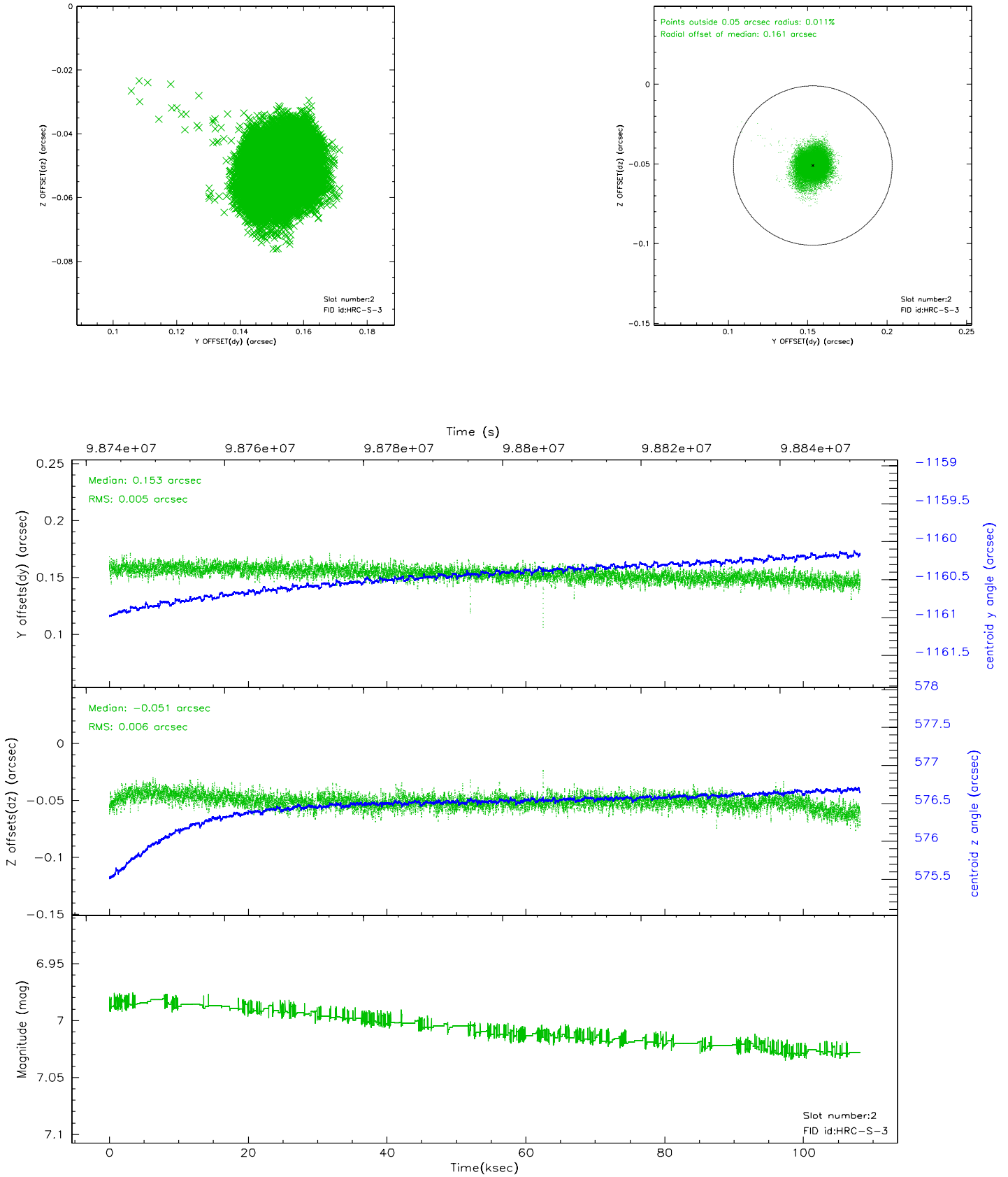
2.5.1 Slot 0



2.5.2 Slot 1

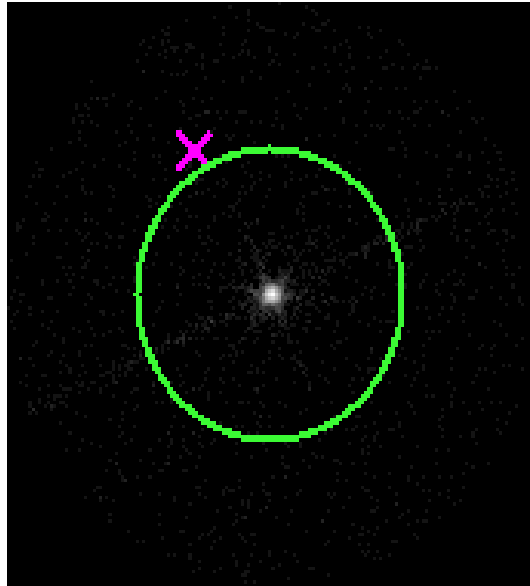


2.5.3 Slot 2



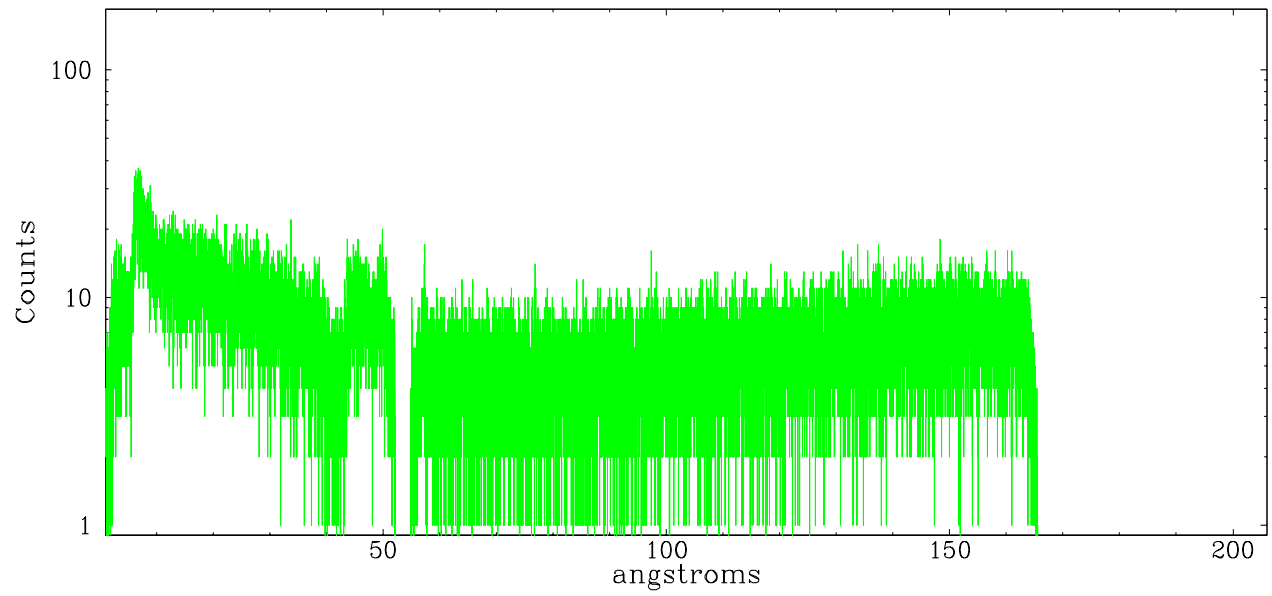
3 Gratings

3.1 LETG Arm

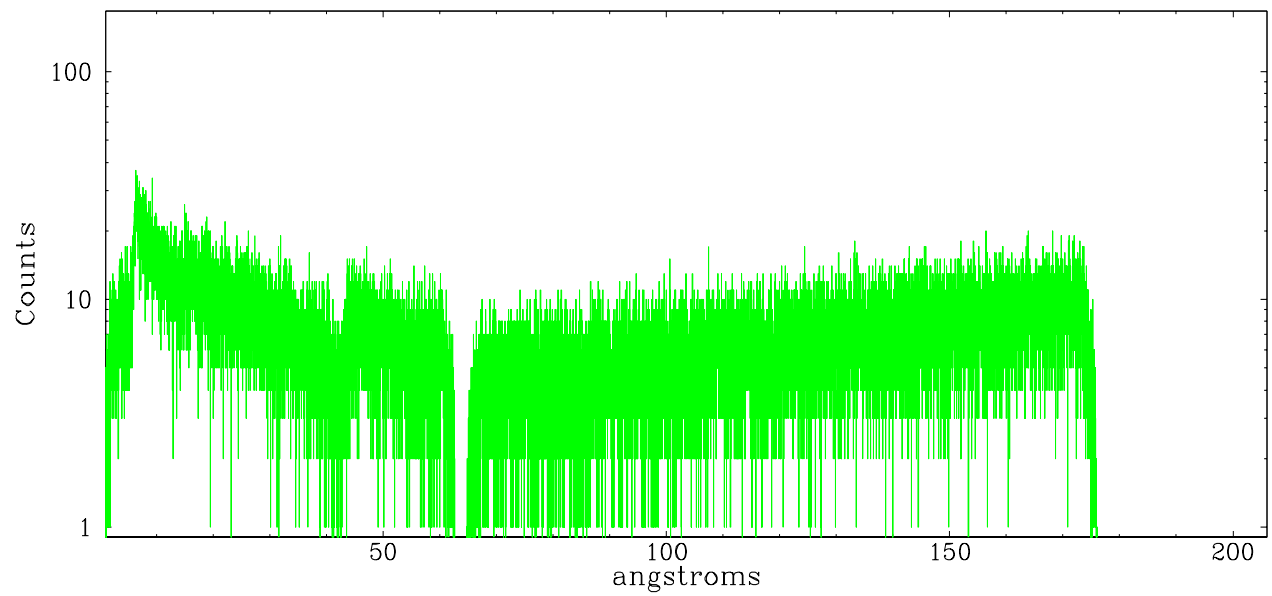


LETG Zero Order

leg order -1



leg order +1



A Summary

A.1 Status

V&V Scientist	Joy Nichols
V&V Date (YYYY-MM-DD)	2006.11.30
V&V Edition	1
V&V Disposition and Status	OK
V&V Charge Time	107.946

A.2 Comments