

V&V Reference Report

L2 ASCDS Version : 7.6.8.1

Observation 3432 - L2 Version 001
Chandra X-Ray Center

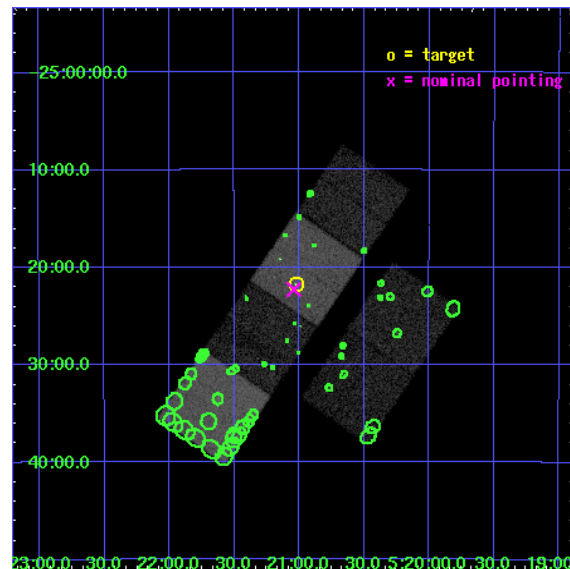
L2 Processing Date : Aug 29 2006

Contents

1	Front	2
2	OBI	3
2.1	OBI	3
2.1.1	Images	3
2.1.2	Bias	3
2.1.3	Parameters	4
2.1.4	Events	4
2.2	Compared Parameters	5
2.3	Aspect	6
2.4	Star Slots	9
2.4.1	Slot 3	9
2.4.2	Slot 4	10
2.4.3	Slot 5	11
2.4.4	Slot 6	12
2.4.5	Slot 7	13
2.5	FID Slots	14
2.5.1	Slot 0	14
2.5.2	Slot 1	15
2.5.3	Slot 2	16
3	Point Sources	17
A	Summary	18
A.1	Status	18
A.2	Comments	18

1 Front

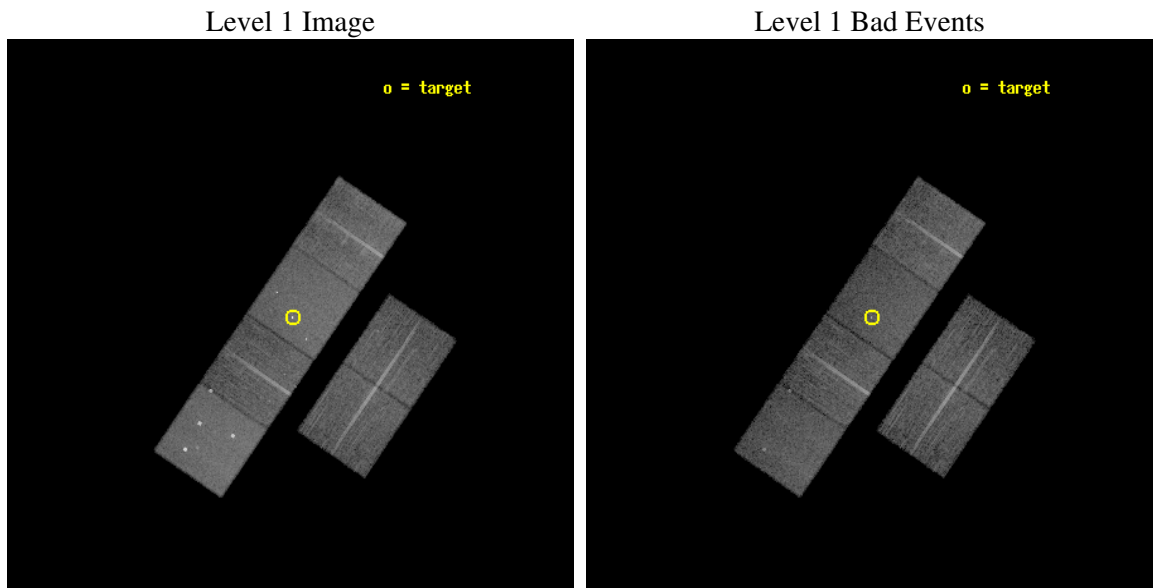
seq_num	600168
obs_id	3432
title	THE X-RAY PROPERTIES OF ULTRALUMINOUS GALAXIES: COSMOLOGICAL IMPLICATIONS
observer	Dr. Tim Heckman
object	IRAS 05189-2524
dtcycle	0
cycle	P
ra_targ	80.255833
dec_targ	-25.362472
ra_nom	80.260241919333
dec_nom	-25.371363626695
roll_nom	304.35817513821
revision	2
ontime	15052.800014019
livetime	14862.192396534
ontime2	15049.55904375
ontime3	15052.800014019
ontime5	15052.800014019
ontime6	15052.800014019
ontime7	15052.800014019
ontime8	15046.318203017
l2events	147282



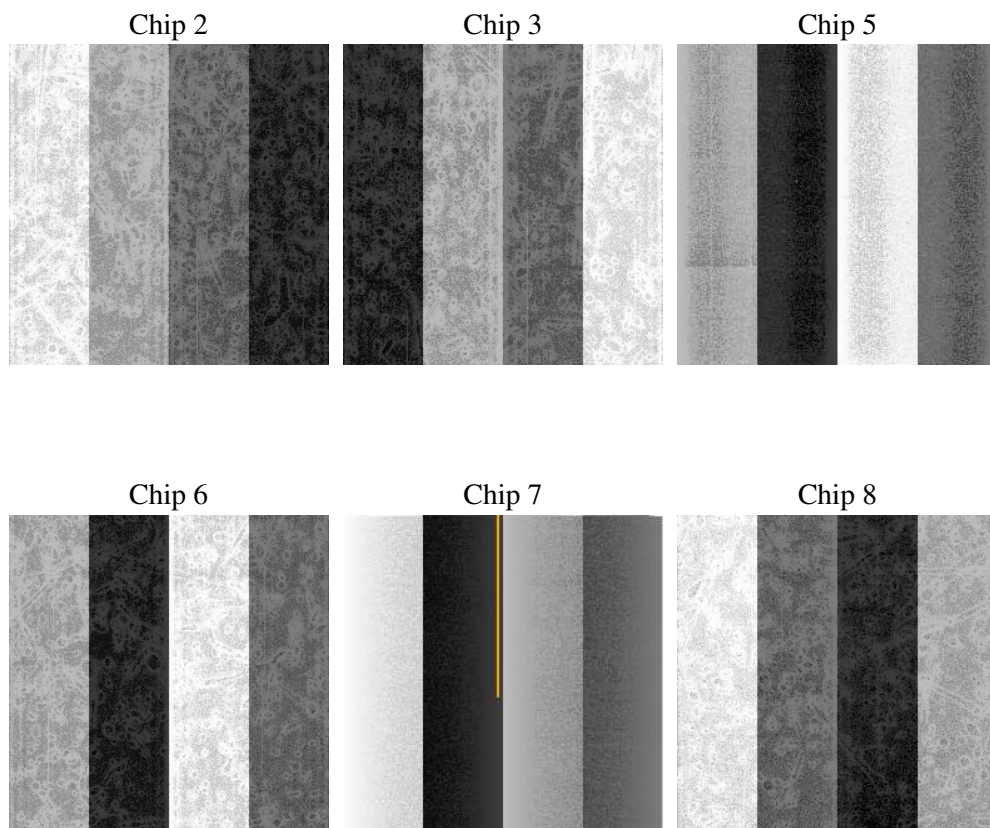
2 OBI

2.1 OBI

2.1.1 Images



2.1.2 Bias



2.1.3 Parameters

obi_num	0
ascdsver	7.6.8.1
caldsver	3.2.3
date	2006-08-29T21:04:12
revision	2

sched_exp_time	15300.000000
ontime	15057.699686572
ontime2	15054.458716303
ontime3	15060.940706655
ontime5	15057.699706495
ontime6	15057.699686572
ontime7	15057.699686572
ontime8	15054.45878607
l1events	677917

2.1.4 Events

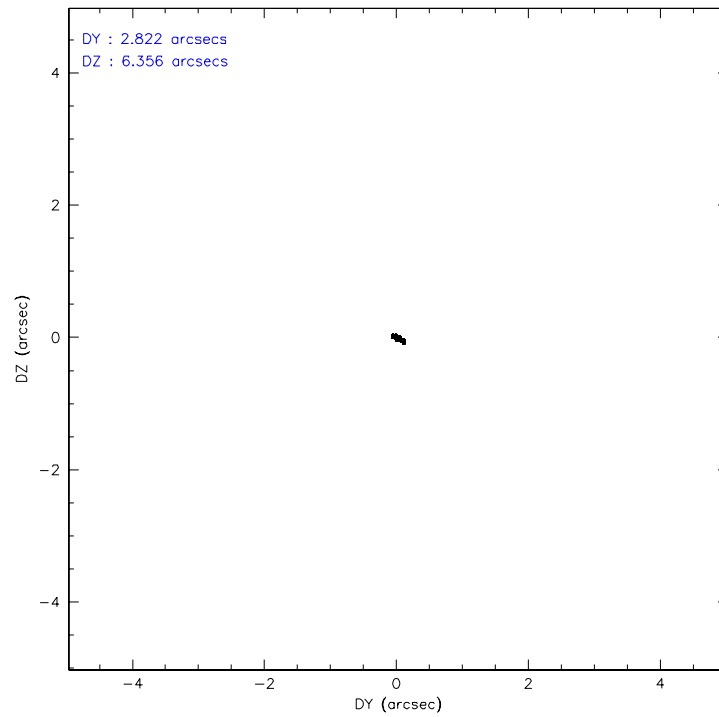
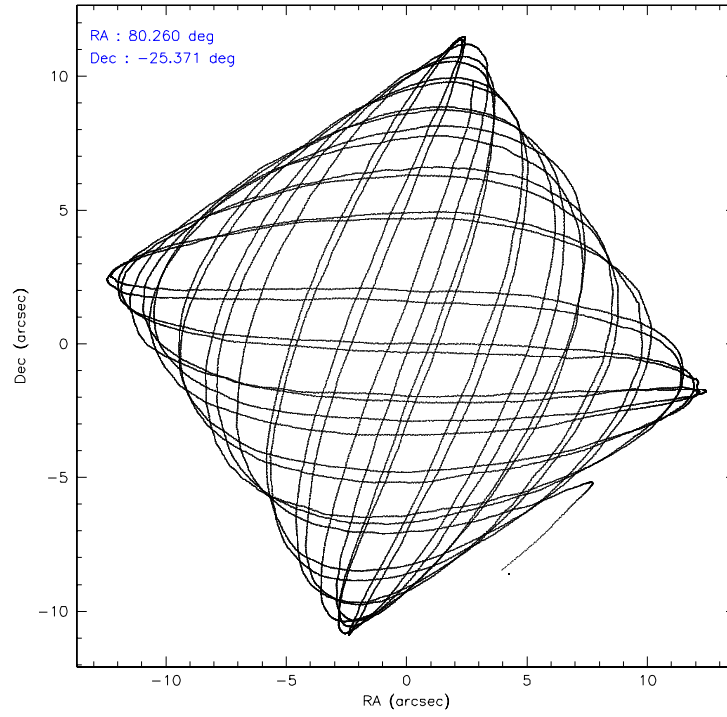
	ccd 2	ccd 3	ccd 5	ccd 6	ccd 7	ccd 8
level 1 events	96222	93284	142103	97173	126490	122645
rejected events	85147	81585	75875	84859	75714	96026
rejected %	88%	87%	53%	87%	59%	78%

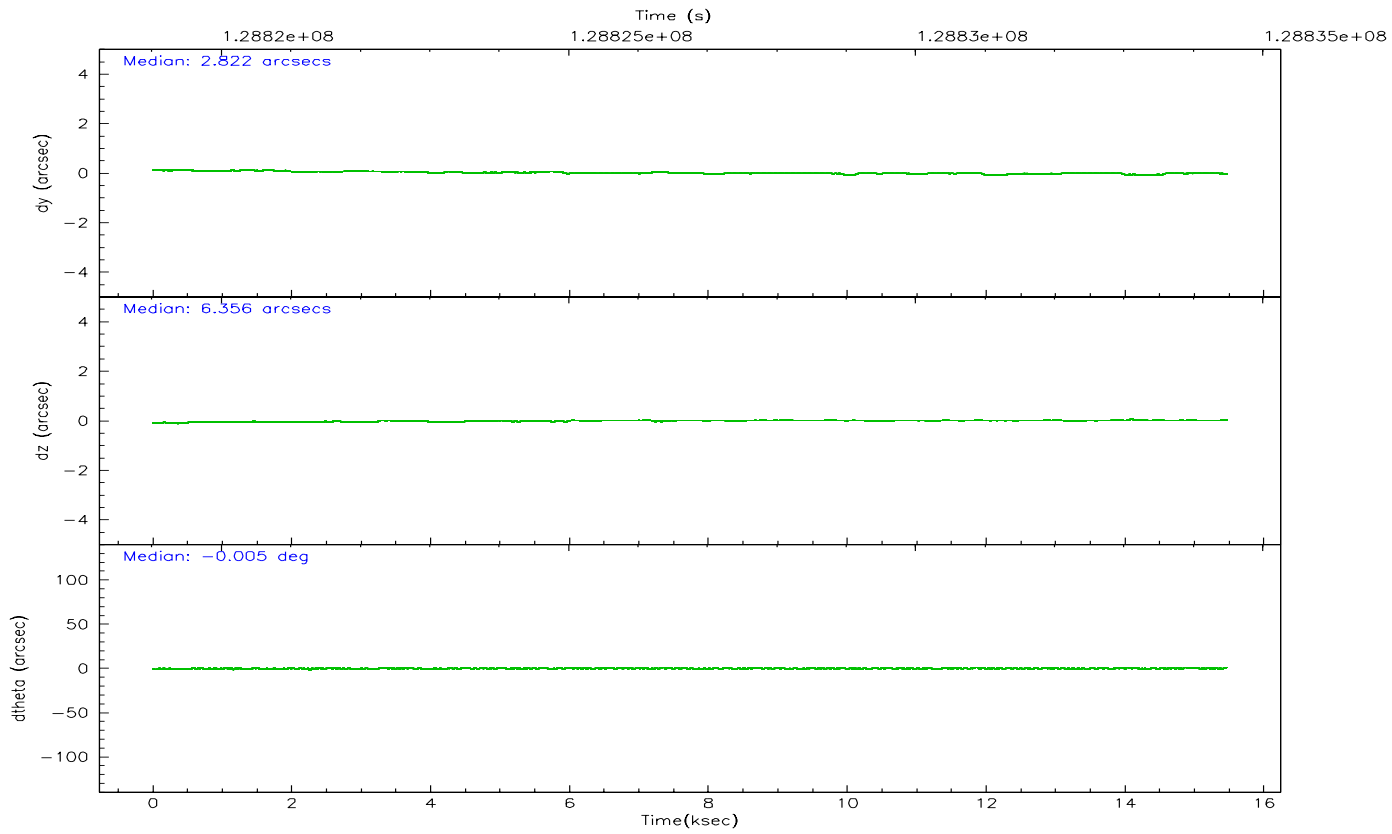
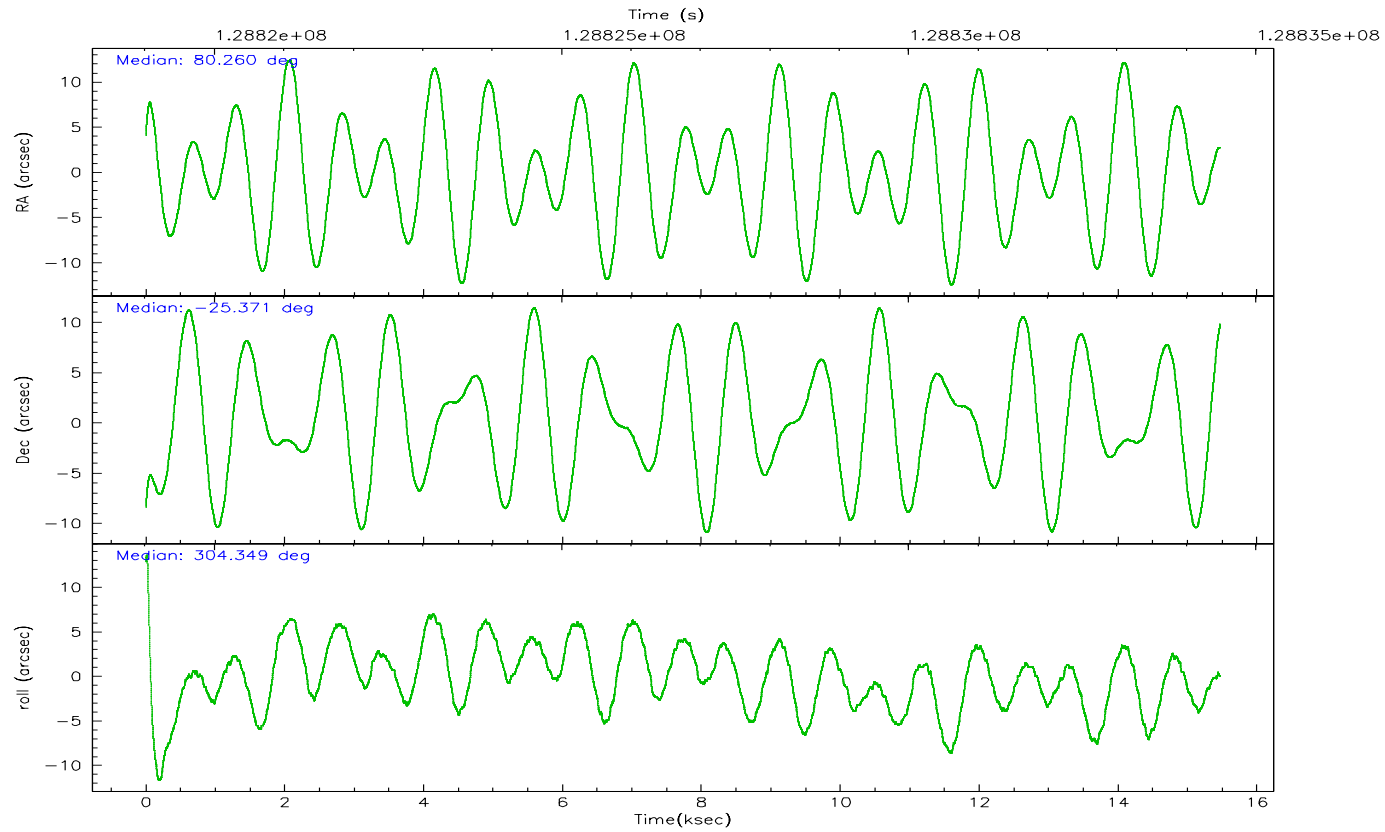
	ccd 2	ccd 3	ccd 5	ccd 6	ccd 7	ccd 8
grade 0 events	4632	5146	9923	5340	3952	8823
	4%	5%	6%	5%	3%	7%
grade 1 events	51	50	531	61	86	78
	0%	0%	0%	0%	0%	0%
grade 2 events	2552	2385	19777	2581	12523	5615
	2%	2%	13%	2%	9%	4%
grade 3 events	995	1030	1383	1121	2825	2957
	1%	1%	0%	1%	2%	2%
grade 4 events	958	1117	1328	1087	2775	2611
	0%	1%	0%	1%	2%	2%
grade 5 events	3271	3628	6357	4232	8049	5099
	3%	3%	4%	4%	6%	4%
grade 6 events	1950	2028	33840	2193	28729	6623
	2%	2%	23%	2%	22%	5%
grade 7 events	81813	77900	68964	80558	67551	90839
	85%	83%	48%	82%	53%	74%

2.2 Compared Parameters

Parameter	Planned	Actual	Parameter	Planned	Actual
Instrument	ACIS	ACIS	Obspar format version number	6	6
Detector	ACIS-235678	ACIS-235678	Obspar file type	PREDICTED	ACTUAL
Grating	NONE	NONE	Obspar update status	NONE	UPDATED
Data mode	FAINT	FAINT	On-chip summing requested	N	N
Observation mode	POINTING	POINTING	Subarray requested	NONE	NONE
Pointing RA	80.232899	80.26024191933318	Alternating exposures requested	N	N
Pointing Dec	-25.359833	-25.37136362669506	Primary exposure time	0.000000	3.2
Pointing Roll	304.189815	304.3581751382144			
SIM focus pos (mm)	-0.684267	-0.6828225247311905			
SIM defocus (mm)	0	0.001444936568705701			
SIM translation stage pos (mm)	-190.132523	-190.1425803651734			
SIM translation stage offset (mm)	0	0.01005778216563158			
Observation start time	128819190.184000	128817390.57843			
Observation start date	2002-01-30T23:05:26	2002-01-30T22:36:30			
Observation end time	128834490.184000	128835213.79165			
Observation end date	2002-01-31T03:20:26	2002-01-31T03:33:33			
Read mode	TIMED	TIMED			

2.3 Aspect



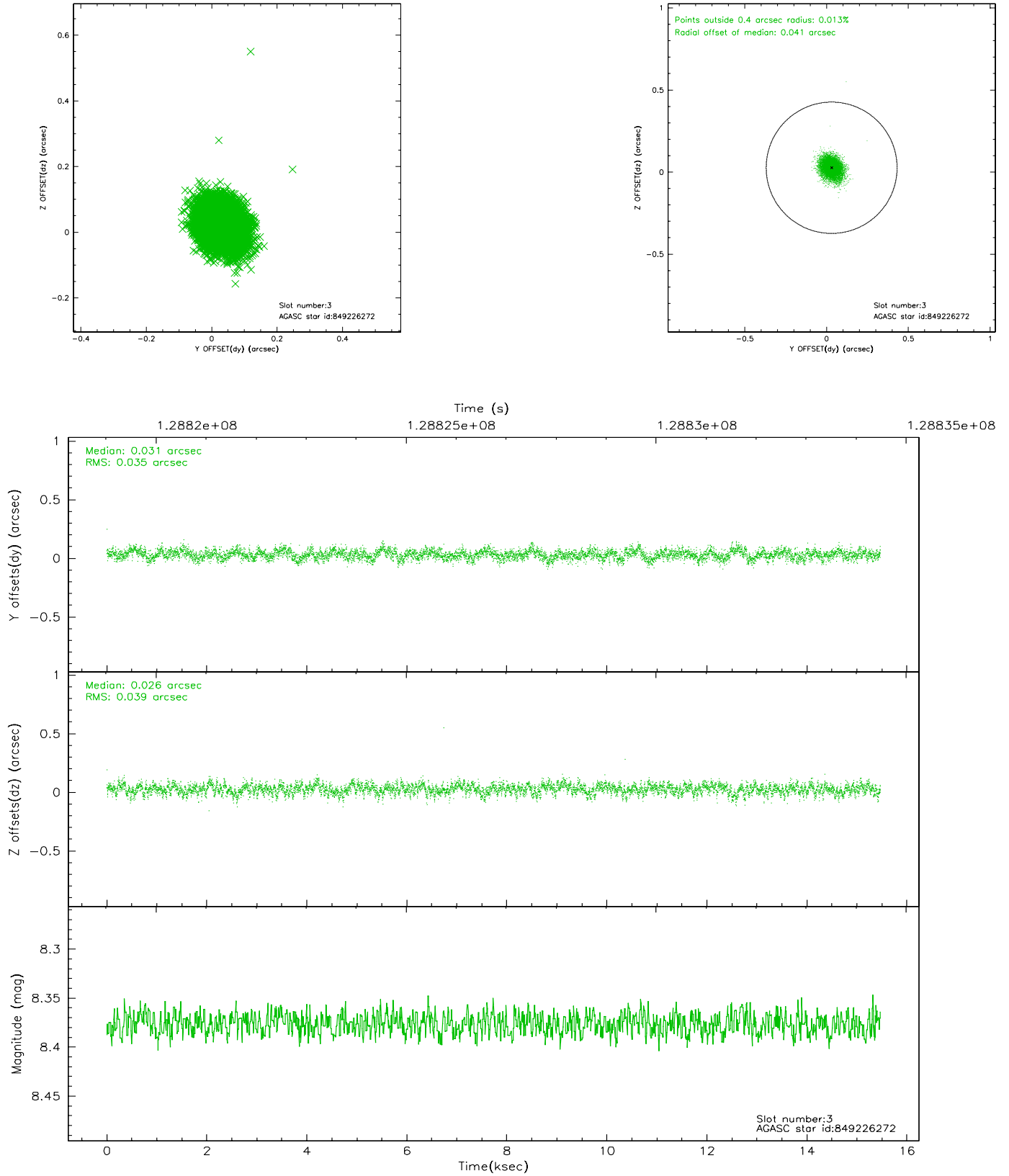


Slot Statistics

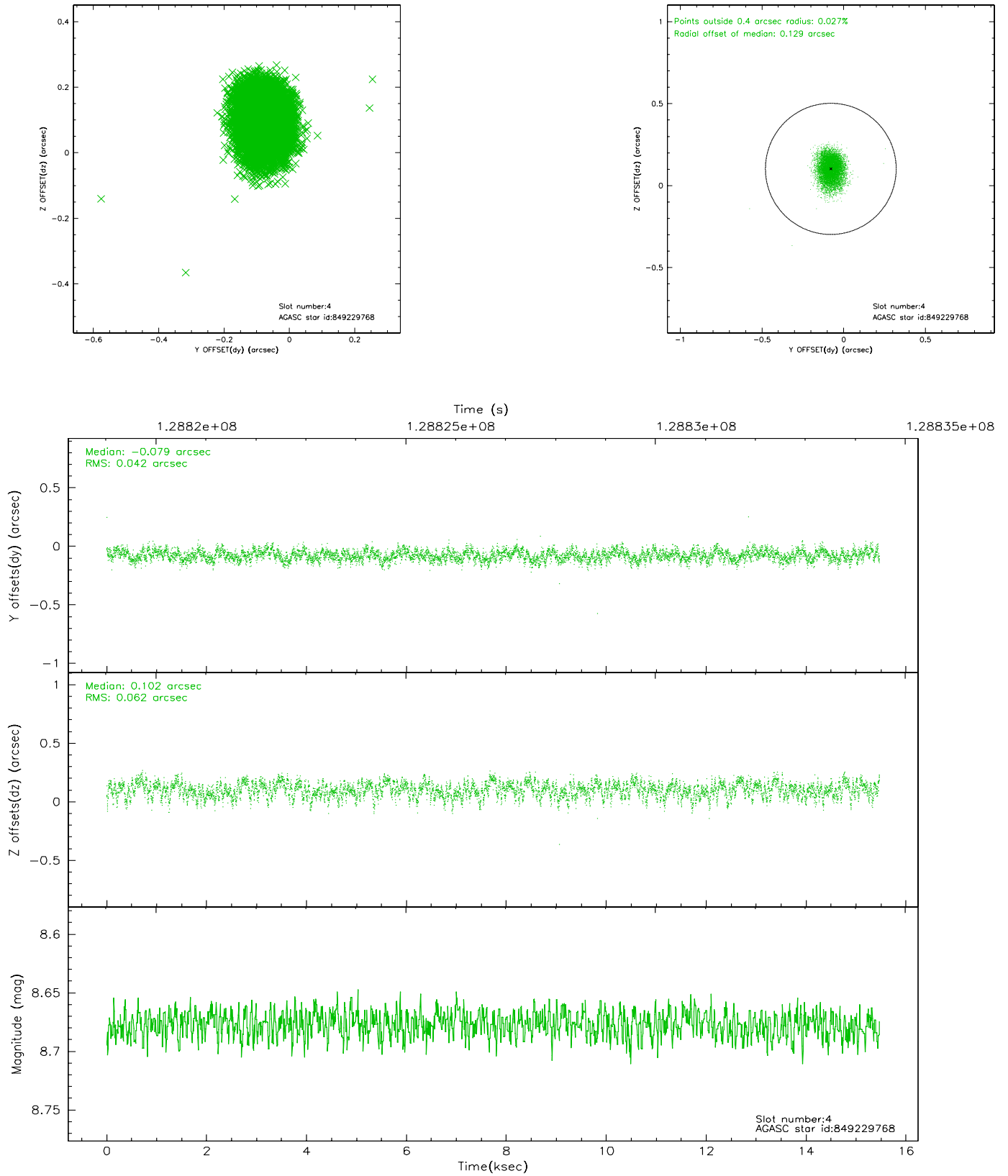
slot	status	id	mag	n_pts	med_dy	med_dz	dr1	dr2	ra	dec	mean_y	mean_z
0	FID	ACIS-S-2	7.12	3772	-0.019	0.033	0.006	0.011	0.000000	0.000000	-755.46	-1727.43
1	FID	ACIS-S-4	7.20	3772	-0.068	0.000	0.005	0.010	0.000000	0.000000	2157.60	180.78
2	FID	ACIS-S-5	7.24	3773	0.056	-0.025	0.007	0.011	0.000000	0.000000	-1807.89	174.68
3	GUIDE	849226272	8.38	7545	0.031	0.026	0.056	0.091	80.214822	-25.538553	499.78	-409.78
4	GUIDE	849229768	8.68	7545	-0.079	0.102	0.079	0.128	79.569100	-25.282300	-1439.96	-1633.54
5	GUIDE	849227312	9.11	7542	0.071	-0.114	0.076	0.123	79.976215	-25.624425	320.94	-1224.97
6	GUIDE	849221968	9.37	7547	-0.068	0.014	0.113	0.182	80.350202	-24.542512	-2217.79	1970.88
7	GUIDE	849219224	9.62	7532	0.052	-0.030	0.100	0.166	79.917999	-26.007007	1356.29	-2152.04

2.4 Star Slots

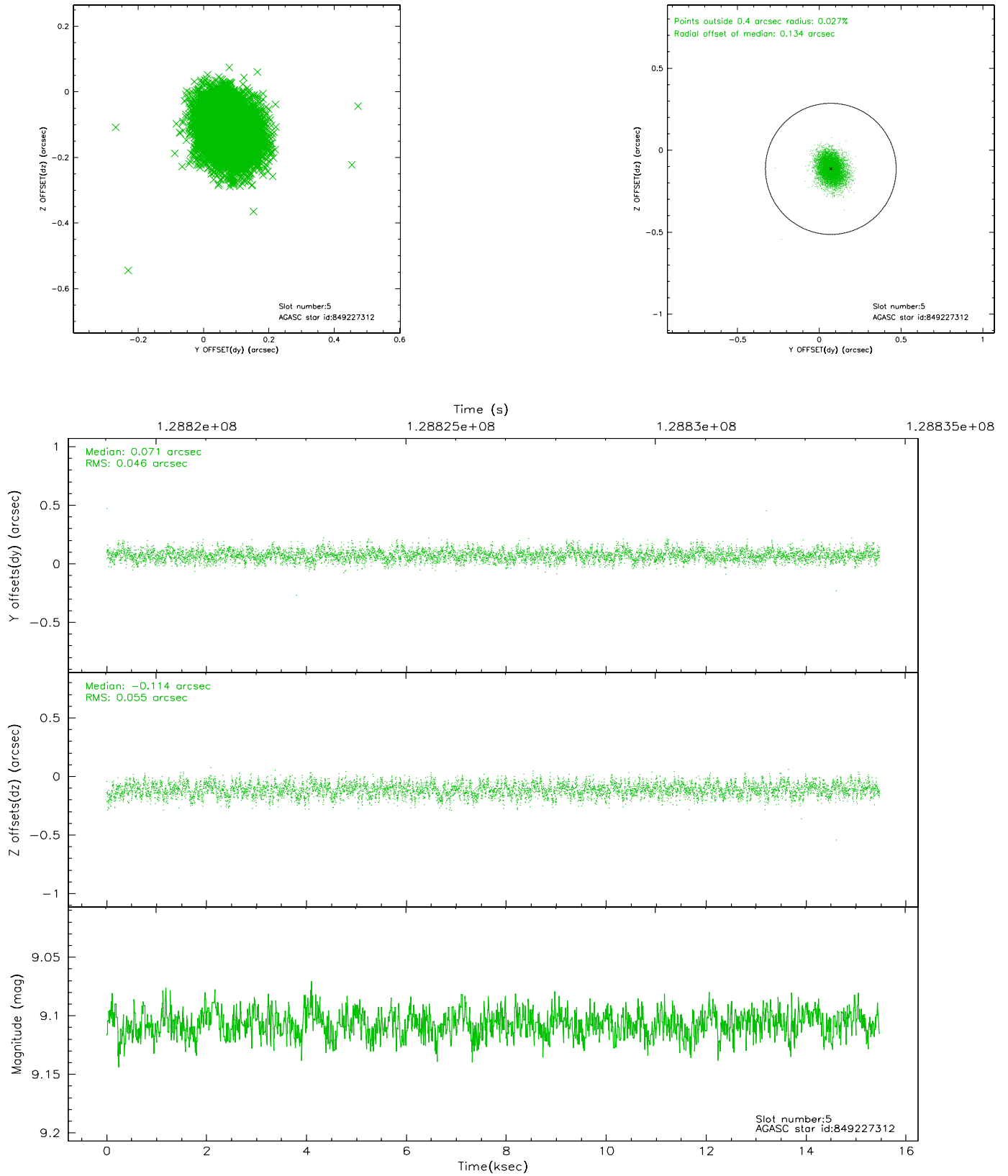
2.4.1 Slot 3



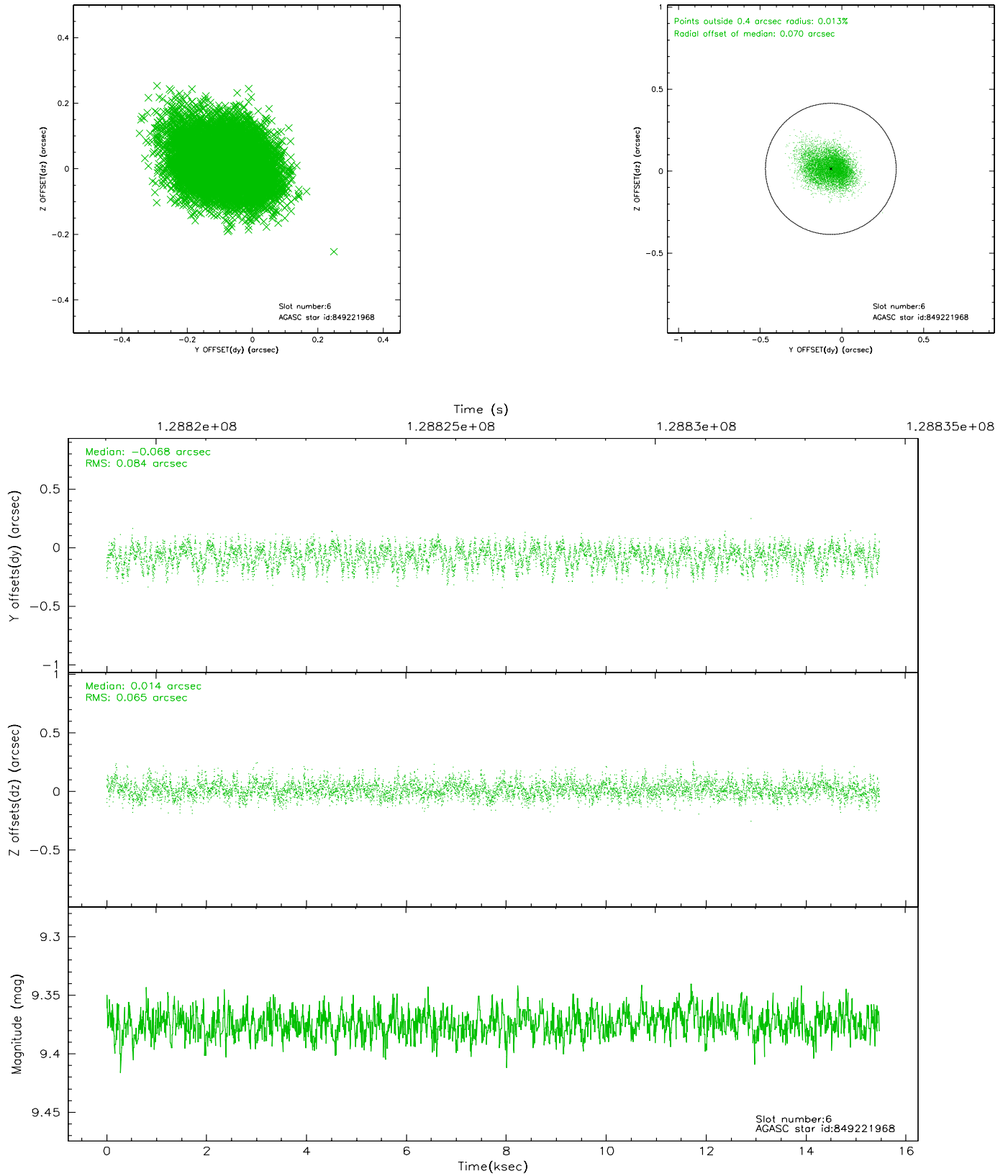
2.4.2 Slot 4



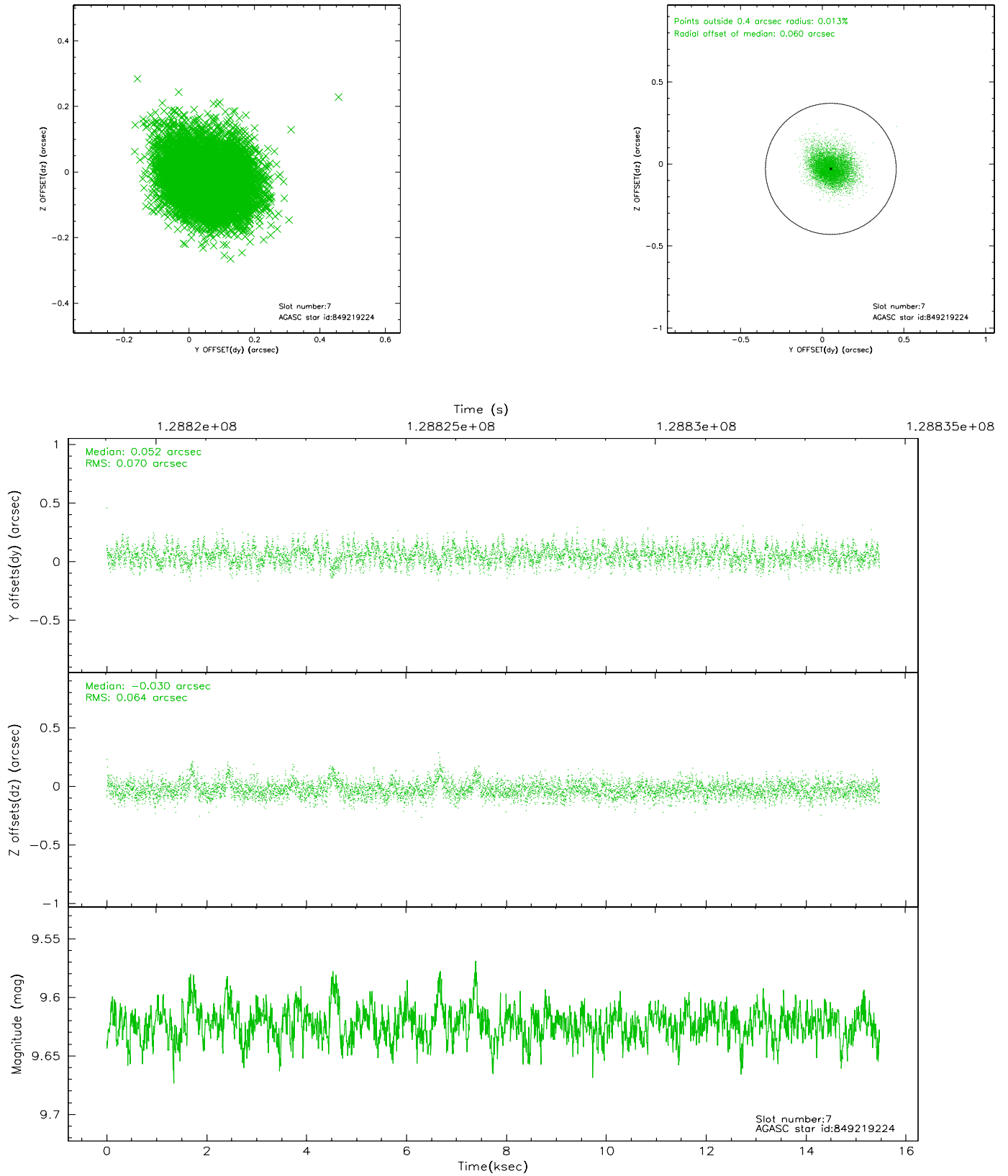
2.4.3 Slot 5



2.4.4 Slot 6

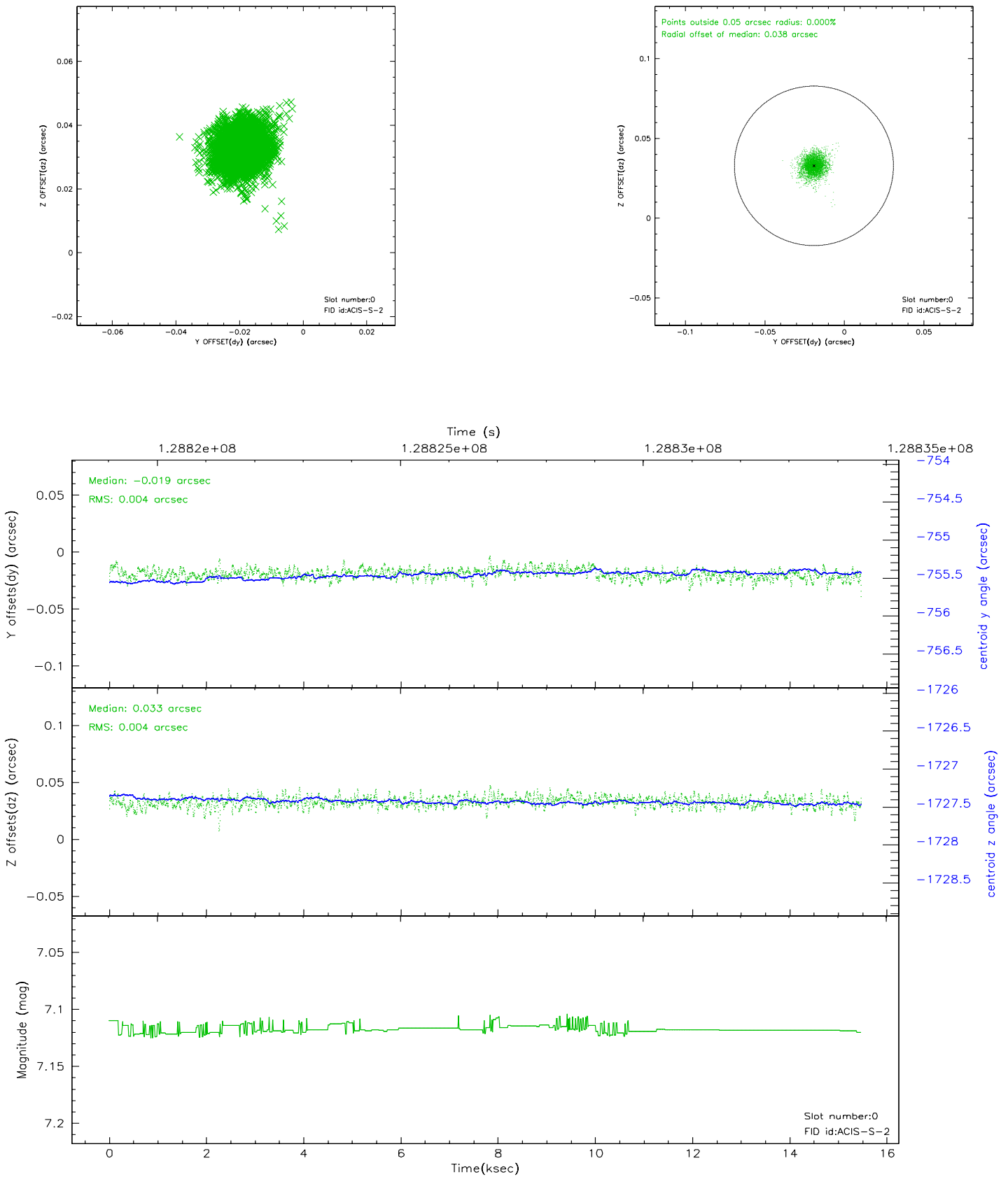


2.4.5 Slot 7

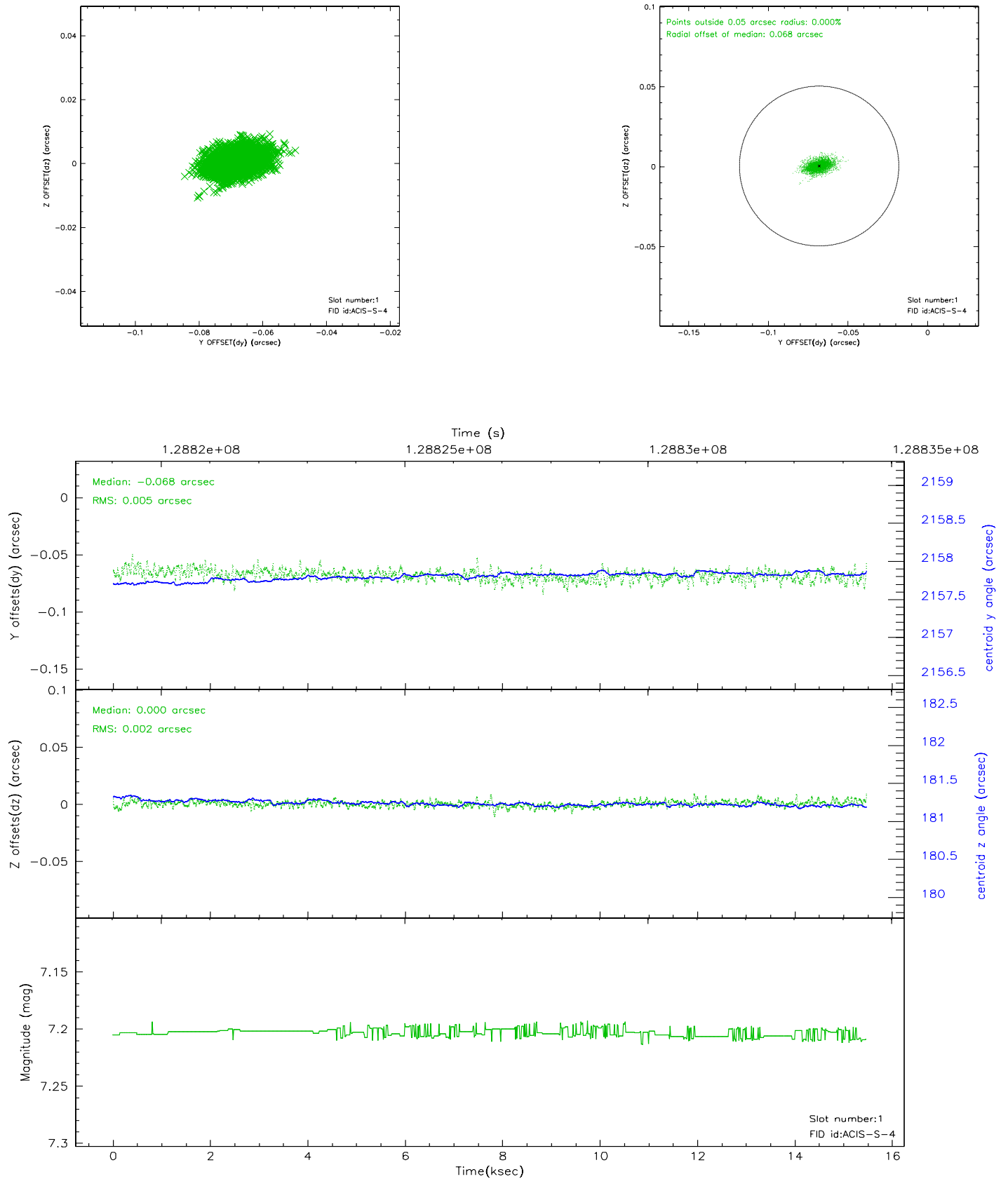


2.5 FID Slots

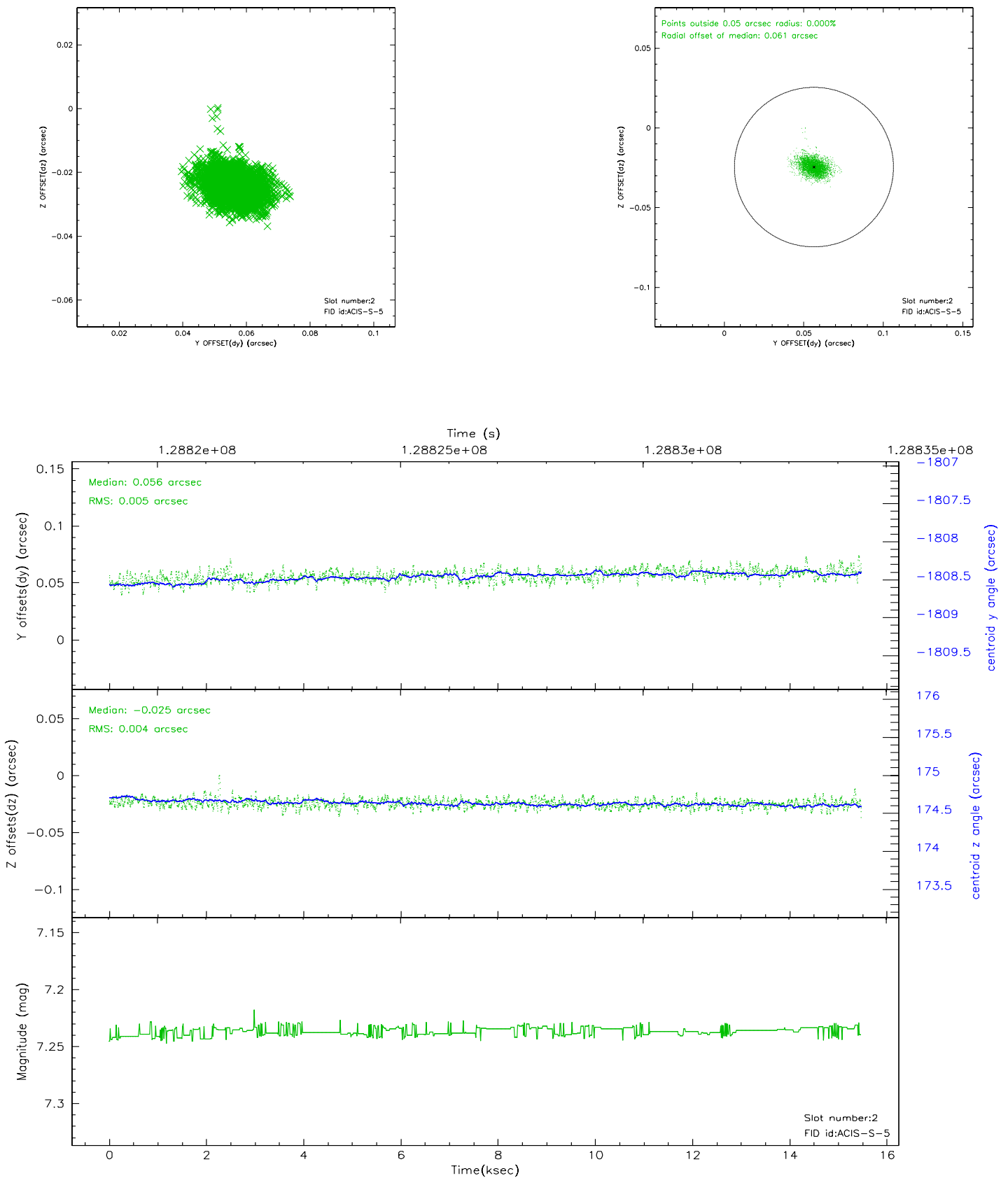
2.5.1 Slot 0



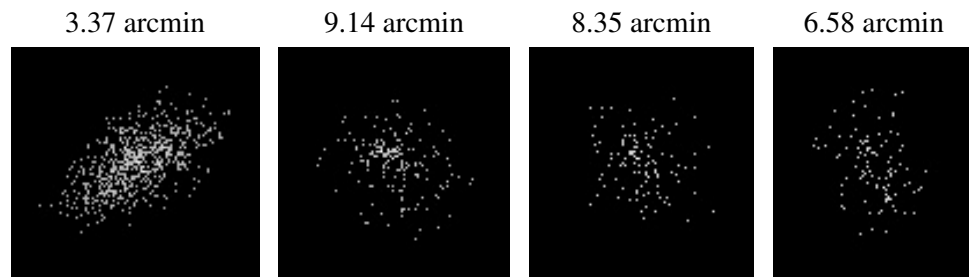
2.5.2 Slot 1



2.5.3 Slot 2



3 Point Sources



A Summary

A.1 Status

V&V Scientist	Jen Lauer
V&V Date (YYYY-MM-DD)	2006.08.30
V&V Edition	1
V&V Disposition and Status	OK
V&V Charge Time	15.056

A.2 Comments