

V&V Reference Report

L2 ASCDS Version : 8.4.5

Observation 2494 - L2 Version 3
Chandra X-Ray Center

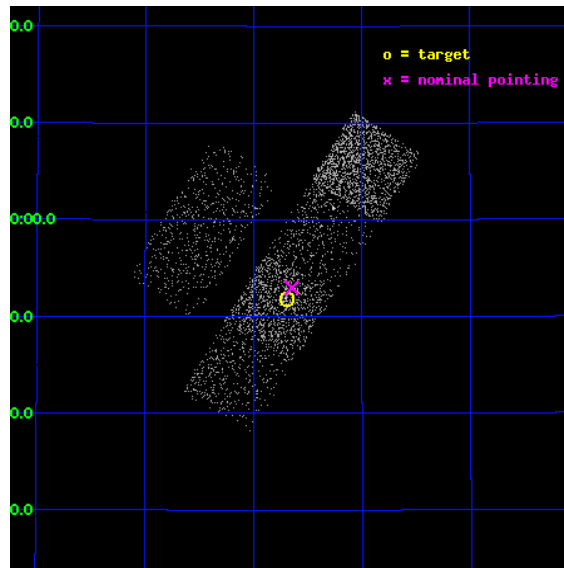
L2 Processing Date : Sep 21 2012

Contents

1	Front	2
2	OBI Primary	3
2.1	OBI	3
2.1.1	Images	3
2.1.2	Bias	3
2.1.3	Parameters	4
2.1.4	Events	4
2.2	Compared Parameters	5
2.3	Aspect	6
2.4	Star Slots	9
2.4.1	Slot 3	9
2.4.2	Slot 4	10
2.4.3	Slot 5	11
2.4.4	Slot 6	12
2.4.5	Slot 7	13
2.5	FID Slots	14
2.5.1	Slot 0	14
2.5.2	Slot 1	15
2.5.3	Slot 2	16
3	OBI Secondary	17
3.1	OBI	17
3.1.1	Images	17
3.1.2	Bias	17
3.1.3	Parameters	18
3.1.4	Events	18
A	Summary	19
A.1	Status	19
A.2	Comments	19

1 Front

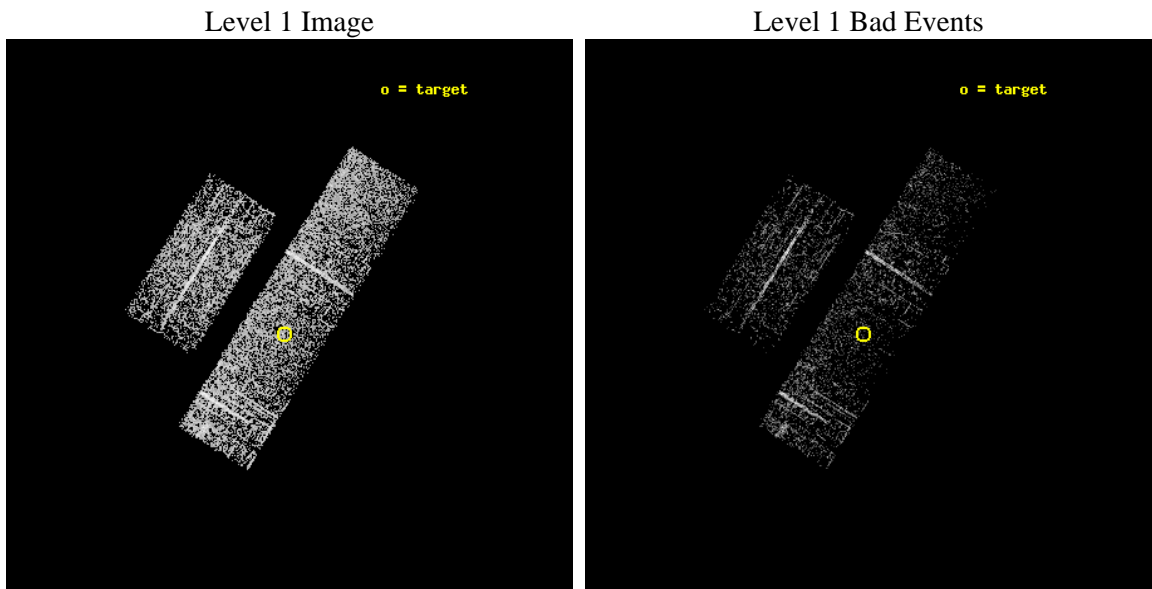
seq_num	600151	Sequence number
obs_id	2494	Observation id
title	A DEEP SURVEY OF X-RAY SOURCES IN M32, THE NEAREST ELLIPTICAL GALAXY	
observer	PROFESSOR ROBERT O'CONNELL	Principal investigator
object	M32	Source name
dtcycle	0	
cycle	P	events are from which exps? P[rimary] S[econdar]
ra_targ	10.674167	Observer's specified target RA [deg]
dec_targ	40.864444	Observer's specified target Dec [deg]
ra_nom	10.661595489978	Nominal RA [deg]
dec_nom	40.882975235429	Nominal Dec [deg]
roll_nom	122.00882875795	Nominal Roll [deg]
revision	3	Processing version of data
ontime	1745.2580555379	Sum of GTIs [s]
livetime	149.1095805219	Livetime [s]
ontime2	1745.2580555379	Sum of GTIs [s]
ontime3	1745.2580555379	Sum of GTIs [s]
ontime5	1745.25803563	Sum of GTIs [s]
ontime6	1745.25803563	Sum of GTIs [s]
ontime7	1745.2580555379	Sum of GTIs [s]
ontime8	1745.2580555379	Sum of GTIs [s]
l2events	4257	Number of level 2 events



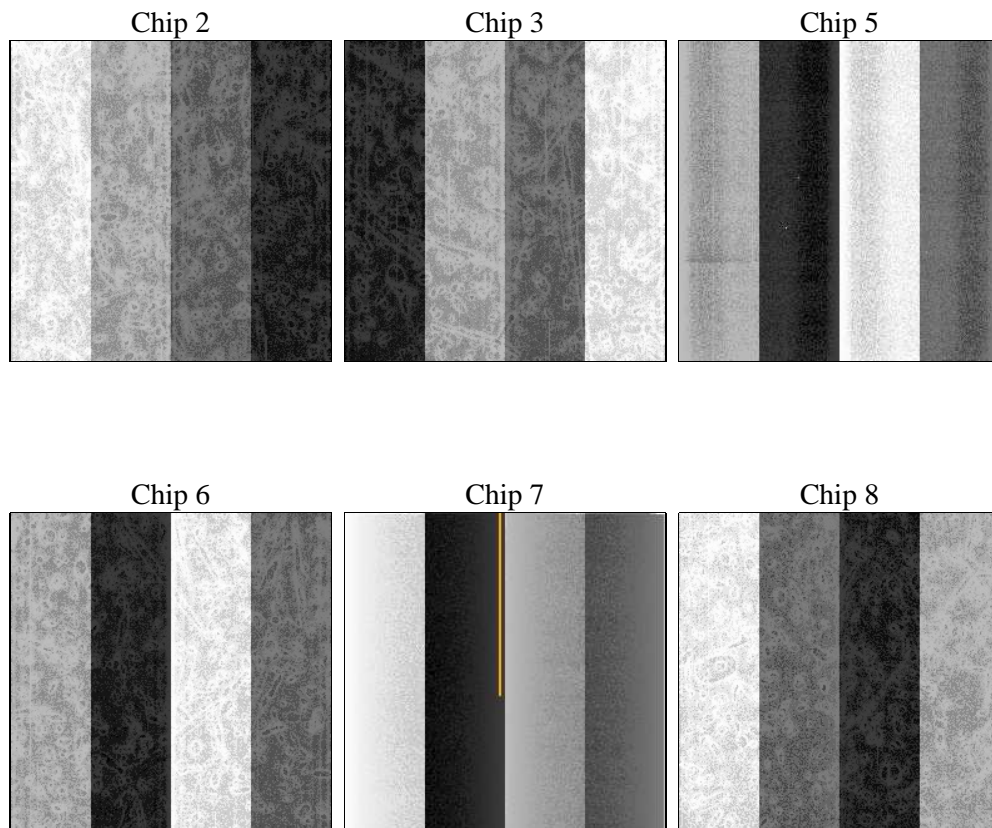
2 OBI Primary

2.1 OBI

2.1.1 Images



2.1.2 Bias



2.1.3 Parameters

obi_num	2	Obi number	sched_exp_time	18000.000000	[s] Scheduled observation exposure time
ascdsver	8.4.5	Processing system revision	ontime	1745.2580555379	Sum of GTIs [s]
caldsver	4.5.1.1	 	ontime2	1745.2580555379	Sum of GTIs [s]
date	2012-09-21T09:41:11	Date and time of file creation	ontime3	1745.2580555379	Sum of GTIs [s]
revision	3	Processing version of data	ontime5	1745.25803563	Sum of GTIs [s]
			ontime6	1745.25803563	Sum of GTIs [s]
			ontime7	1745.2580555379	Sum of GTIs [s]
			ontime8	1745.2580555379	Sum of GTIs [s]
			l1events	36886	Number of level 1 events

2.1.4 Events

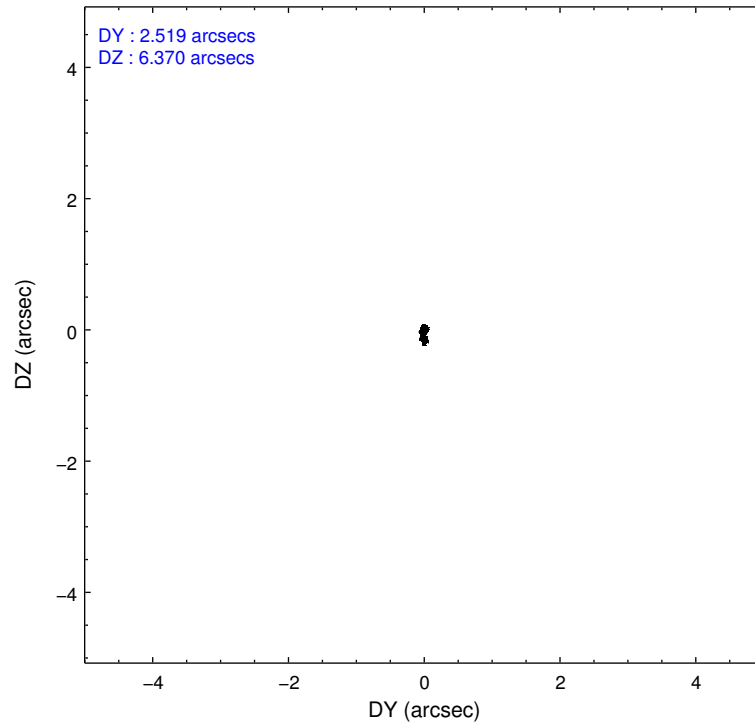
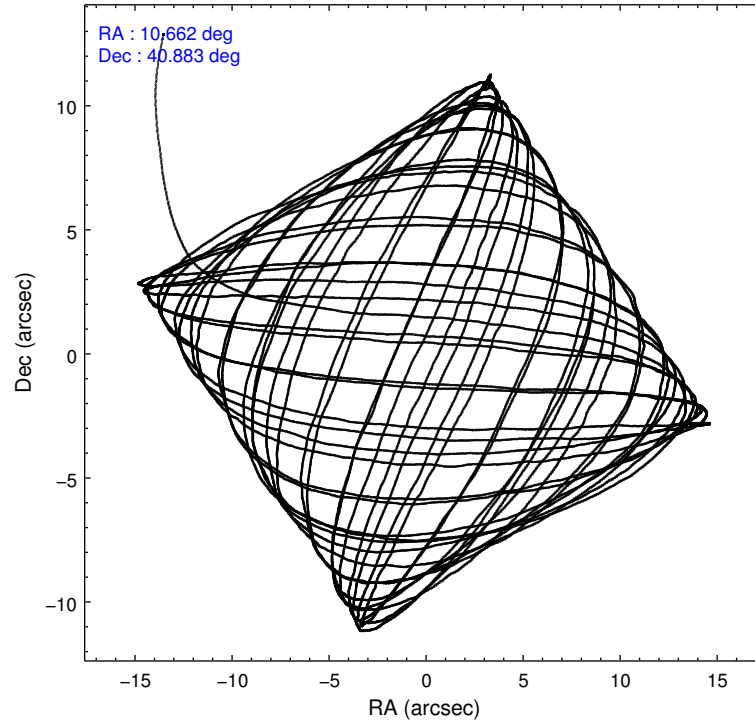
	ccd 2	ccd 3	ccd 5	ccd 6	ccd 7	ccd 8
level 1 events	6451	5238	5200	6668	5023	8306
rejected events	6065	4881	3509	6148	3740	7441
rejected %	94%	93%	67%	92%	74%	89%

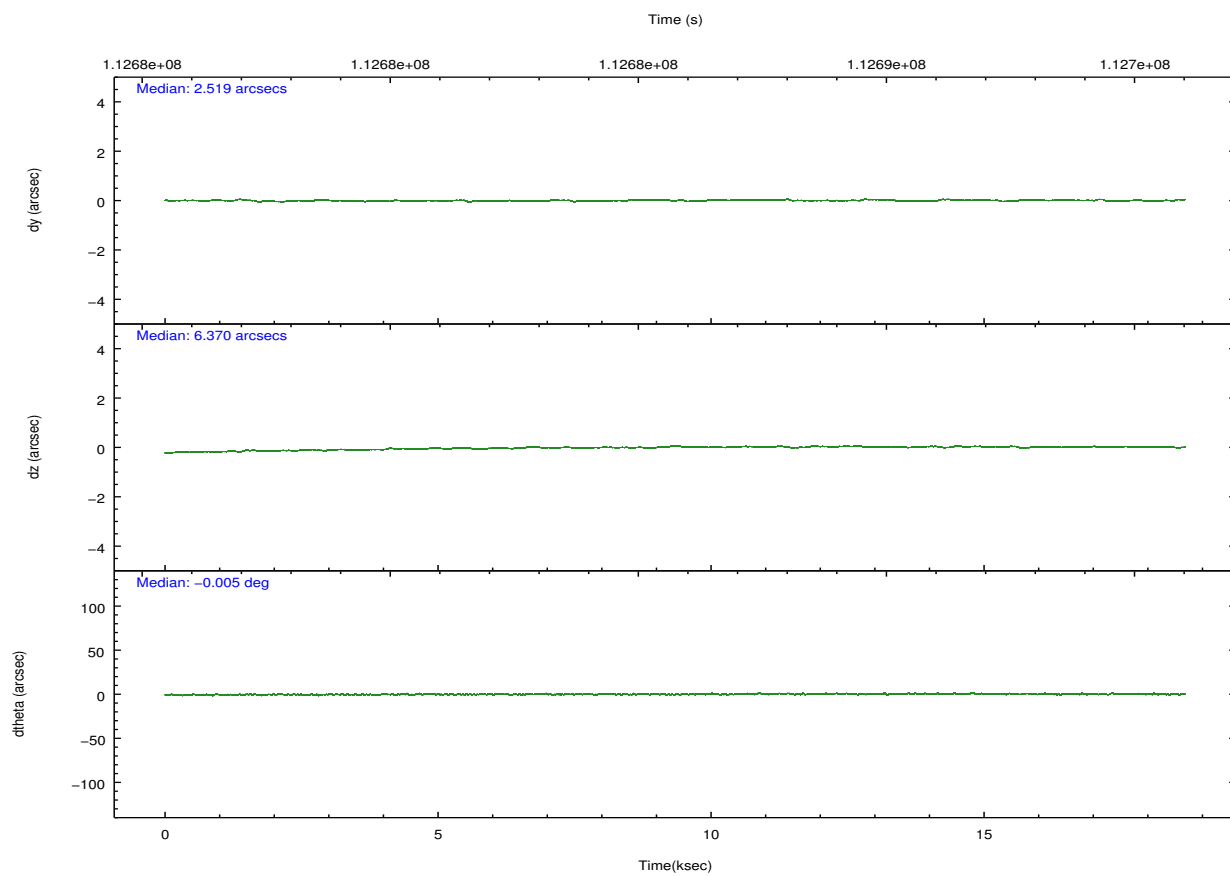
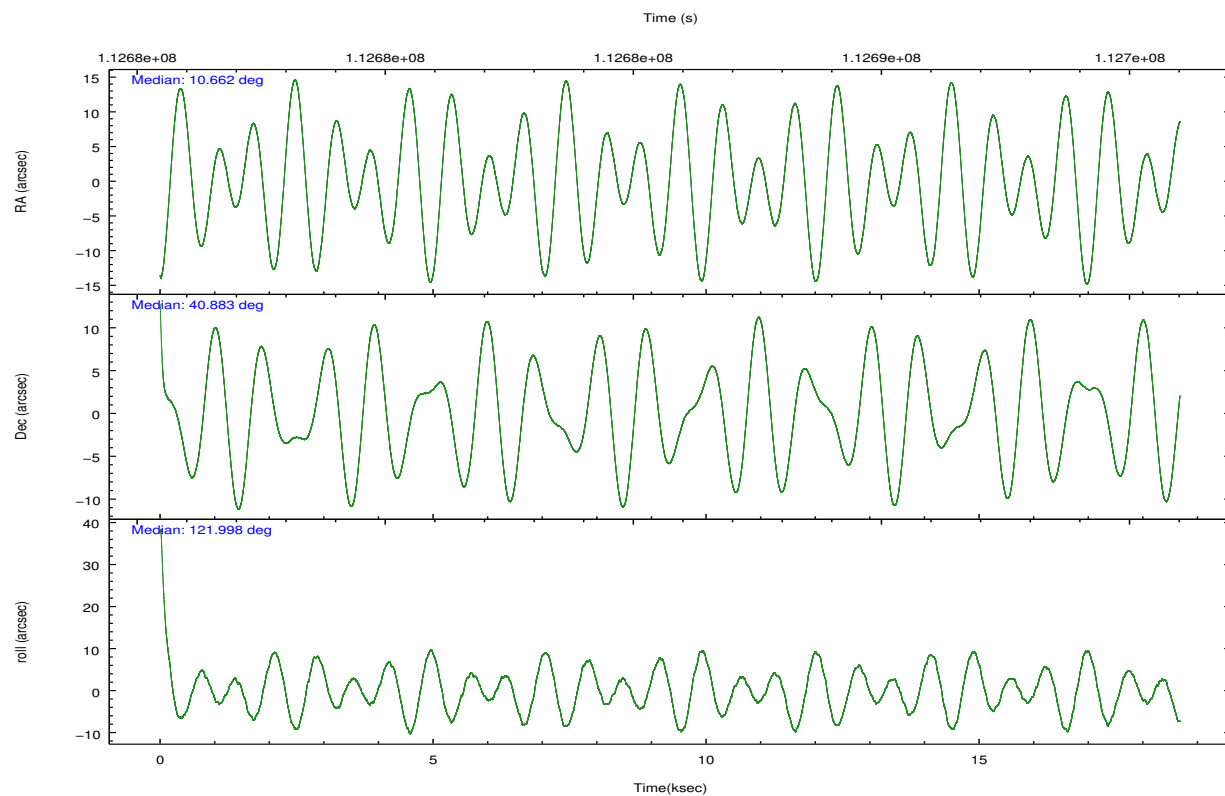
	ccd 2	ccd 3	ccd 5	ccd 6	ccd 7	ccd 8
grade 0 events	102	109	105	188	129	207
	1%	2%	2%	2%	2%	2%
grade 1 events	2	3	4	1	2	1
	0%	0%	0%	0%	0%	0%
grade 2 events	105	90	438	110	275	184
	1%	1%	8%	1%	5%	2%
grade 3 events	58	53	101	64	122	120
	0%	1%	1%	0%	2%	1%
grade 4 events	46	38	100	65	141	87
	0%	0%	1%	0%	2%	1%
grade 5 events	137	177	359	175	399	229
	2%	3%	6%	2%	7%	2%
grade 6 events	76	67	948	96	617	267
	1%	1%	18%	1%	12%	3%
grade 7 events	5925	4701	3145	5969	3338	7211
	91%	89%	60%	89%	66%	86%

2.2 Compared Parameters

Parameter	Planned	Actual	Parameter	Planned	Actual
Instrument	ACIS	ACIS	Obspar format version number	7	7
Detector	ACIS-235678	ACIS-235678	Obspar file type	PREDICTED	ACTUAL
Grating	NONE	NONE	Obspar update status	NONE	UPDATED
Data mode	FAINT	FAINT	Number of optional ACIS chips dropped	0	0
Observation mode	POINTING	POINTING	On-chip summing requested	N	N
[deg] Pointing RA	10.693627	10.66159548997803	Subarray requested	NONE	NONE
[deg] Pointing Dec	40.870441	40.88297523542857	Alternating exposures requested	Y	Y
[deg] Pointing Roll	121.831223	122.0088287579504	[s] Primary exposure time	0.200000	0.3
[mm] SIM focus pos	-0.684267	-0.6828225247311905	[s] Secondary exposure time	0.000000	3.2
[mm] SIM defocus	0	0.001444936568705701	Duty cycle	10	10
[mm] SIM translation stage pos	-190.132523	-190.1400660498719			
[mm] SIM translation stage offset	0	0.00754346686406393			
[s] Observation start time (MET)	112677078.184000	112675872.89838			
Observation start date	2001-07-28T03:10:14	2001-07-28T02:51:12			
[s] Observation end time (MET)	112695078.184000	112695738.93666			
Observation end date	2001-07-28T08:10:14	2001-07-28T08:22:18			
Read mode	TIMED	TIMED			

2.3 Aspect



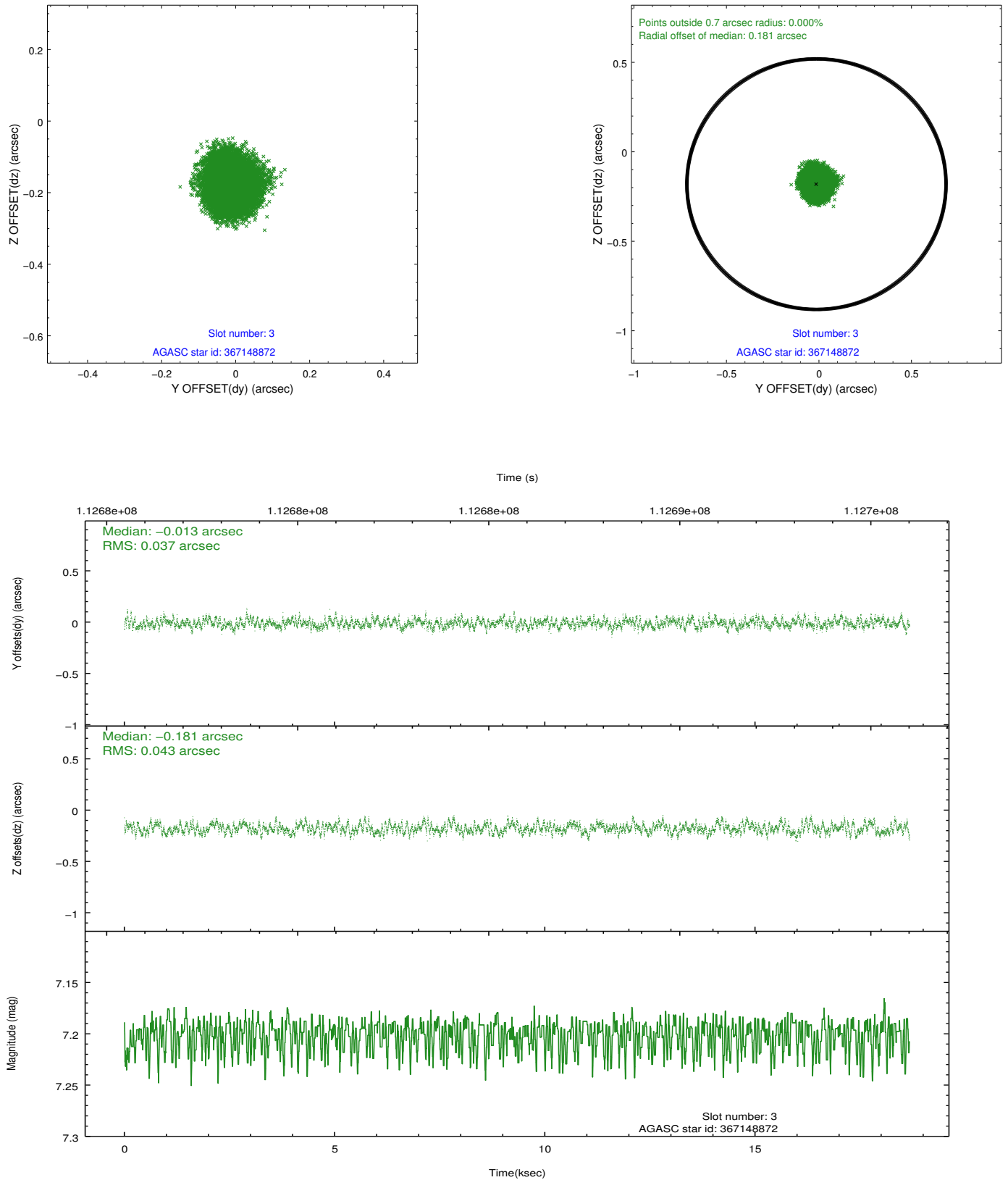


Slot Statistics

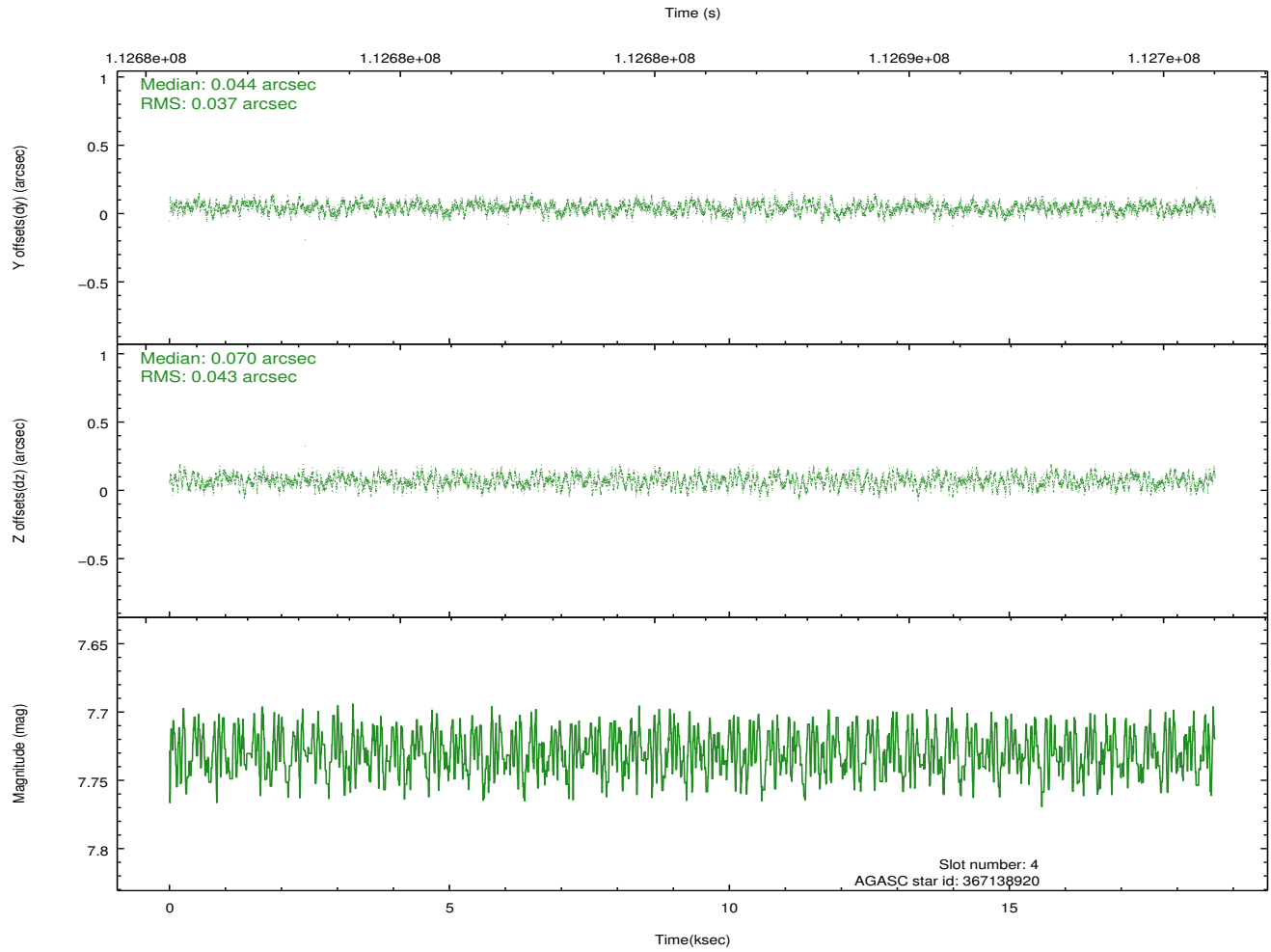
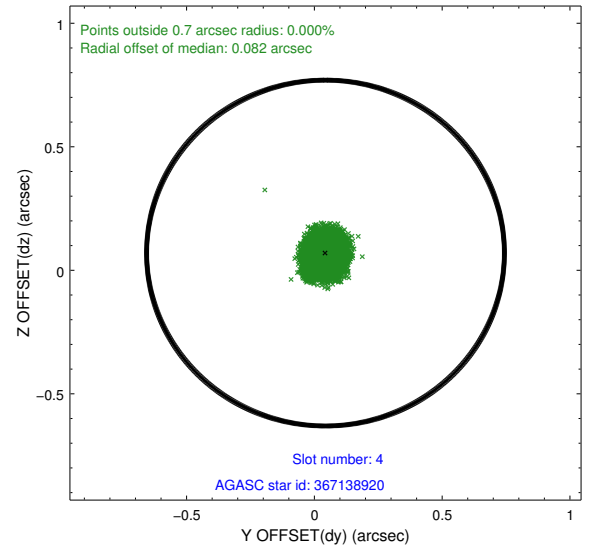
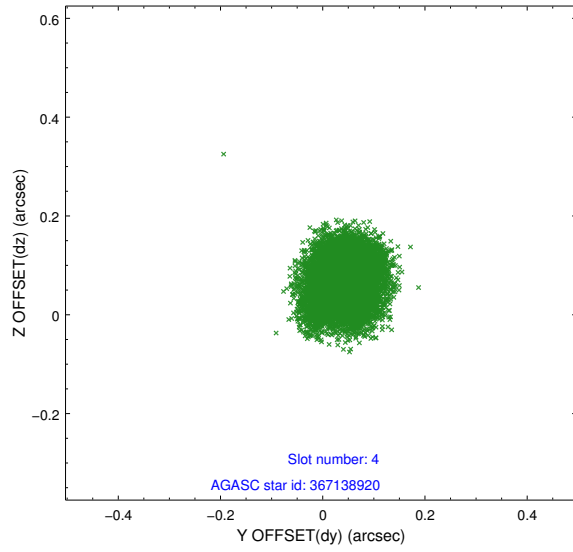
slot	status	id	mag	n_pts	med_dy	med_dz	dr1	dr2	ra	dec	mean_y	mean_z
0	FID	ACIS-S-2	7.11	4555	-0.017	-0.021	0.005	0.010	0.000000	0.000000	-755.14	-1727.52
1	FID	ACIS-S-4	7.20	4555	-0.012	0.003	0.006	0.010	0.000000	0.000000	2158.02	180.81
2	FID	ACIS-S-6	7.35	4556	0.002	0.025	0.007	0.012	0.000000	0.000000	407.10	818.44
3	GUIDE	367148872	7.20	9111	-0.013	-0.181	0.062	0.095	10.505940	40.688258	-285.28	781.83
4	GUIDE	367138920	7.73	9112	0.044	0.070	0.062	0.096	11.513485	40.808909	-1355.88	-1785.76
5	GUIDE	367139768	7.97	9110	0.063	0.065	0.052	0.082	11.069715	40.685175	-1104.80	-520.93
6	GUIDE	367144424	8.67	9107	0.138	-0.197	0.074	0.117	10.464515	40.309136	-1383.20	1600.29
7	GUIDE	367674552	8.86	9107	-0.232	0.243	0.074	0.121	11.016238	41.570845	1686.86	-2067.18

2.4 Star Slots

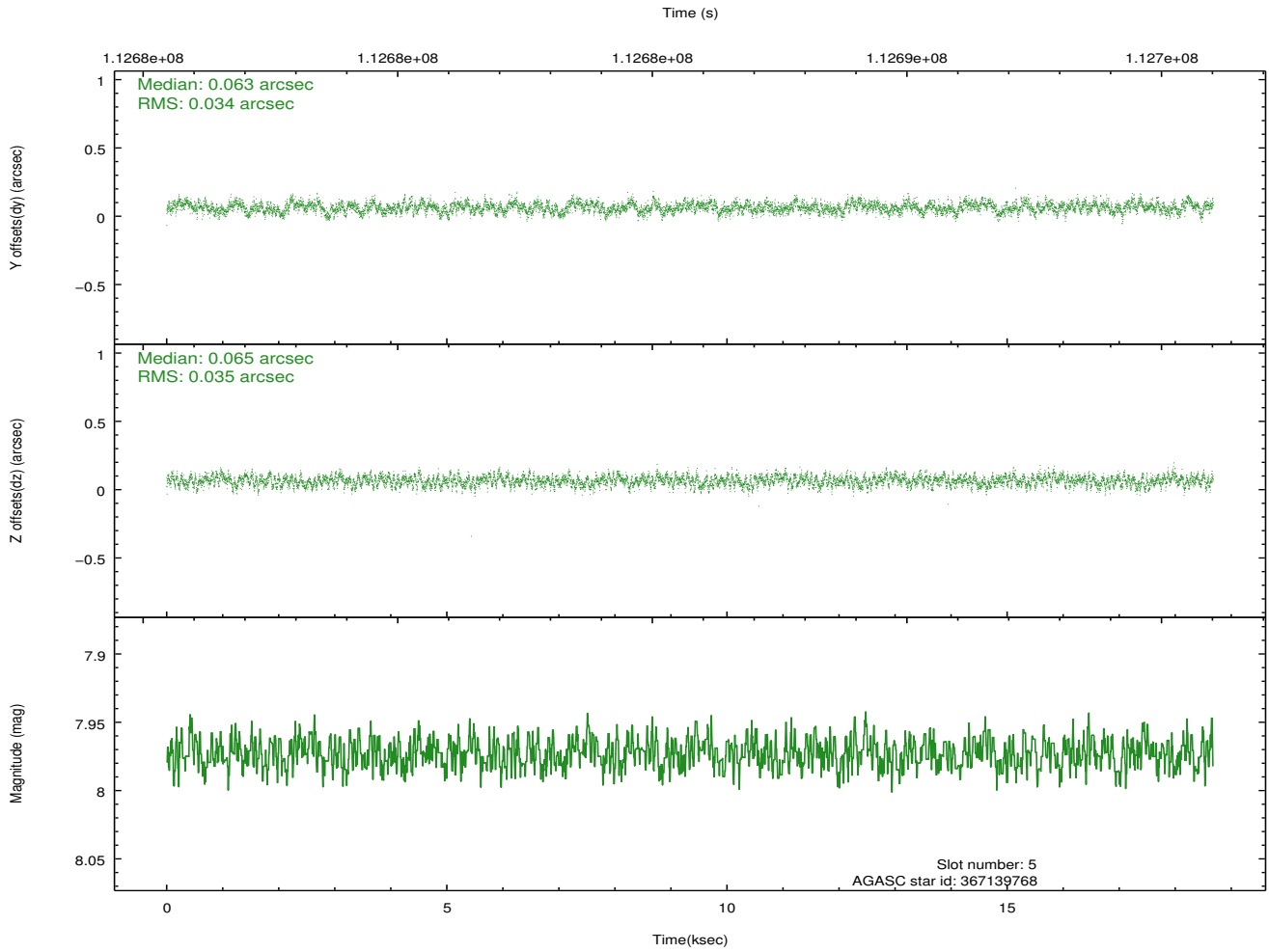
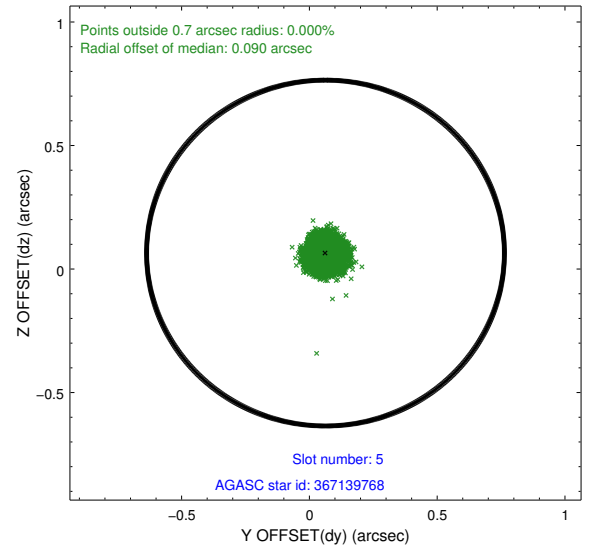
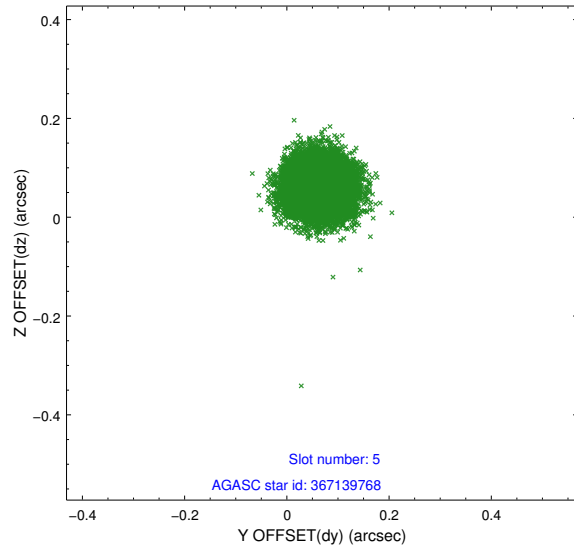
2.4.1 Slot 3



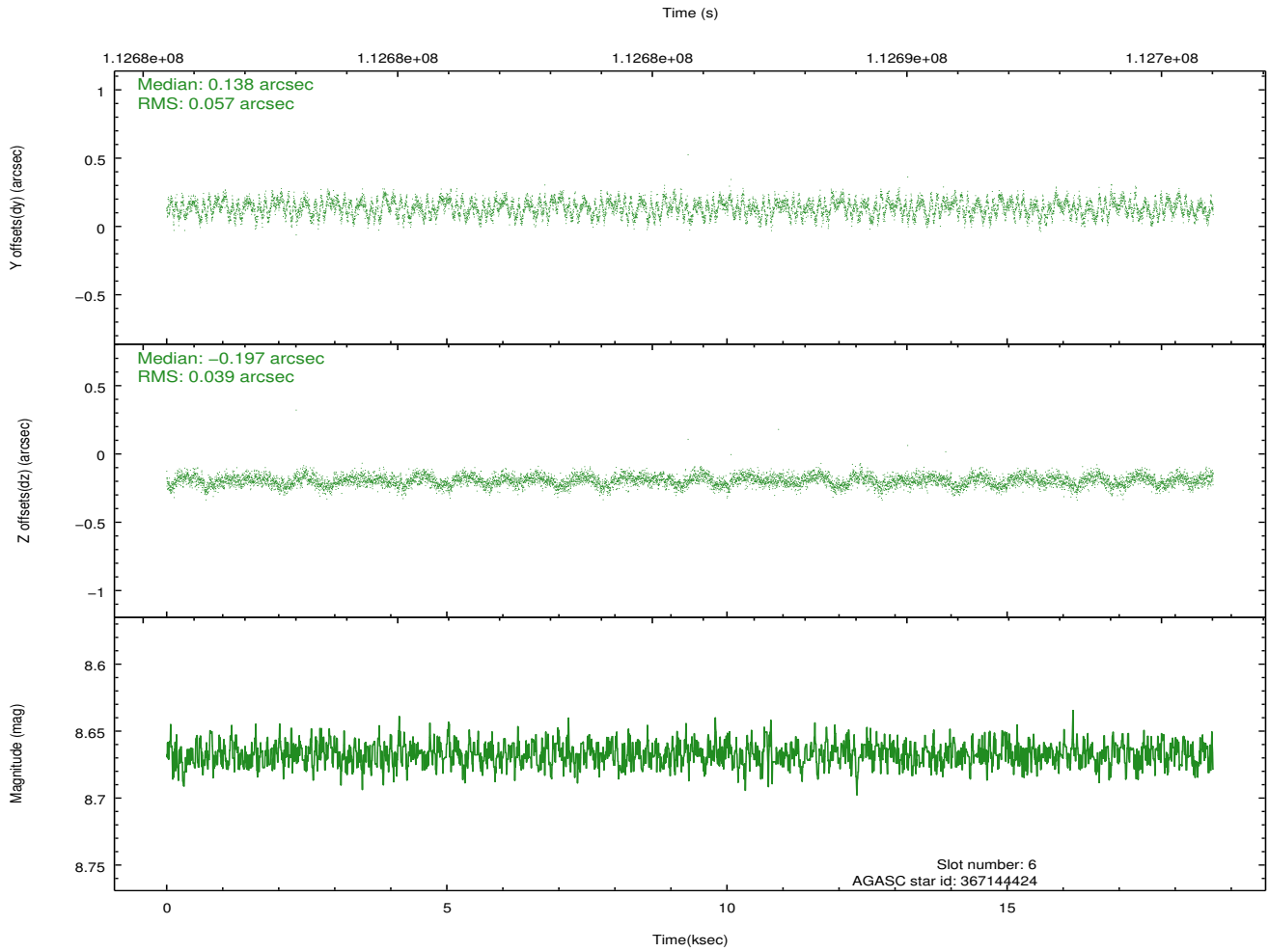
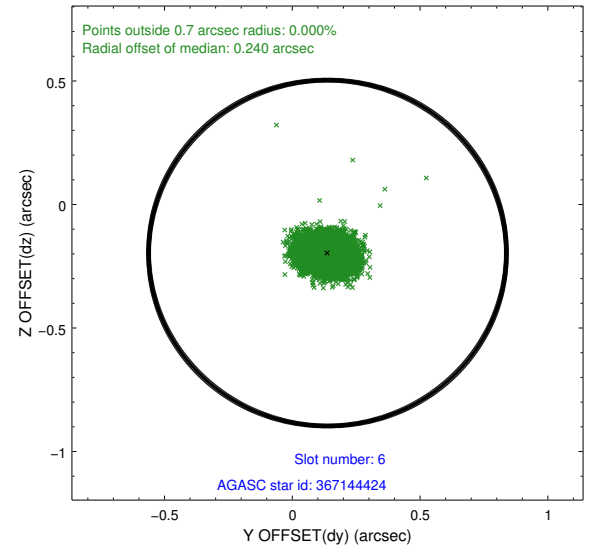
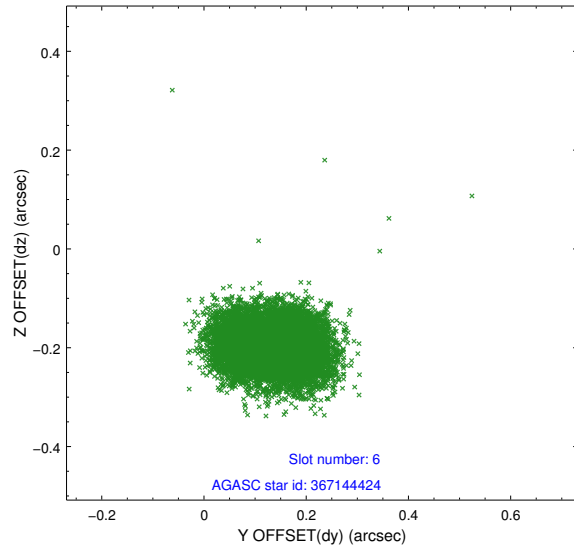
2.4.2 Slot 4



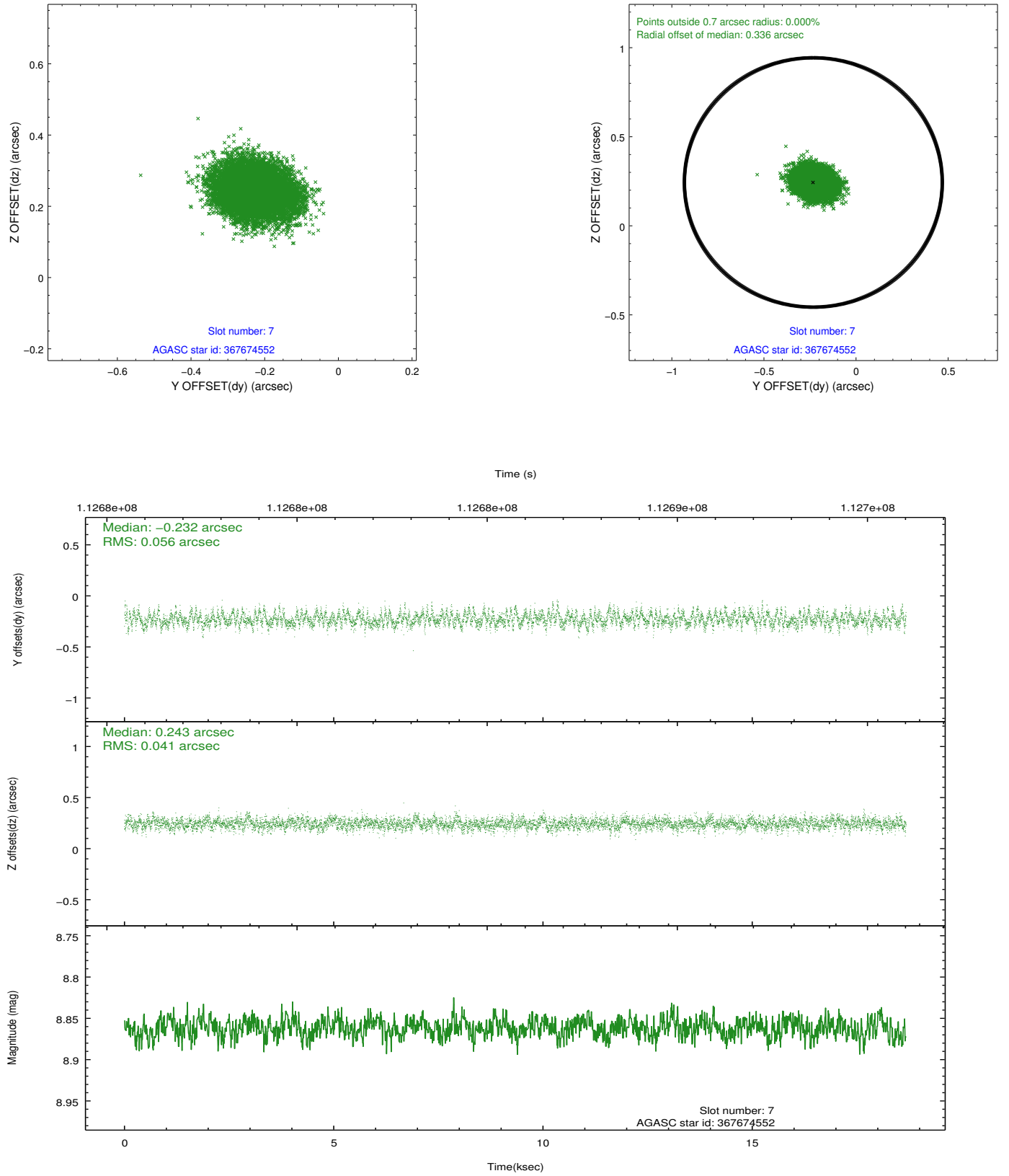
2.4.3 Slot 5



2.4.4 Slot 6

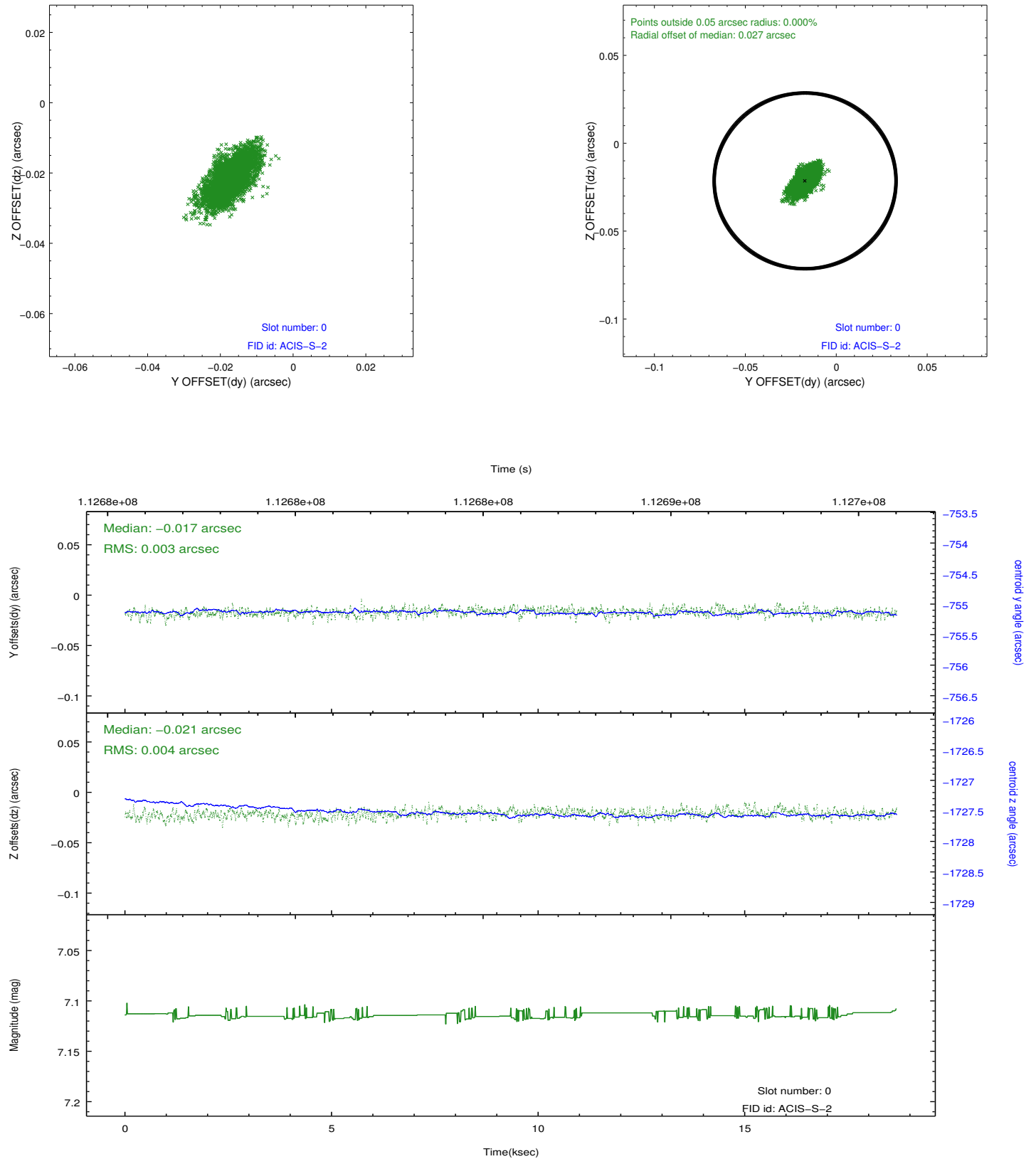


2.4.5 Slot 7

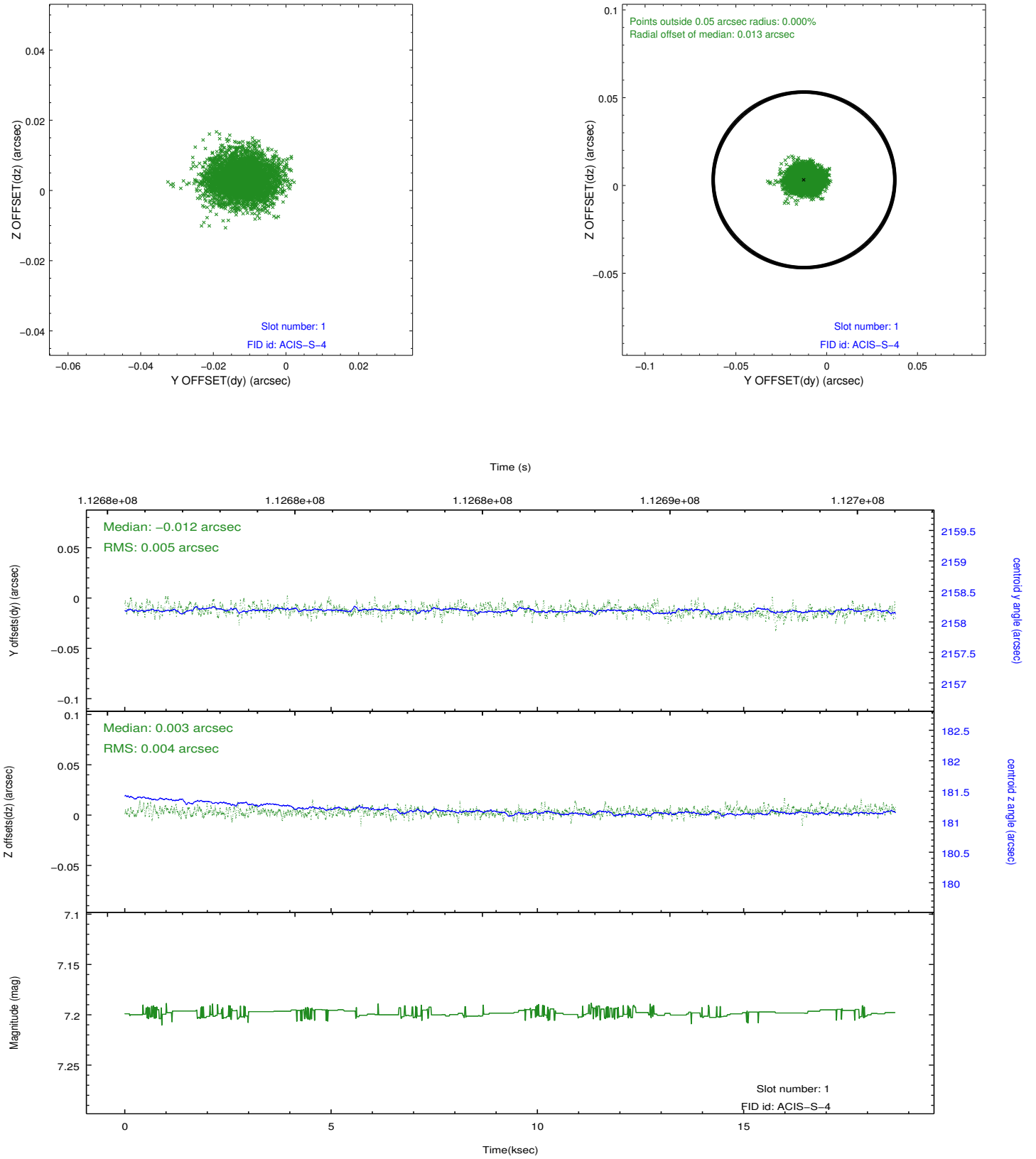


2.5 FID Slots

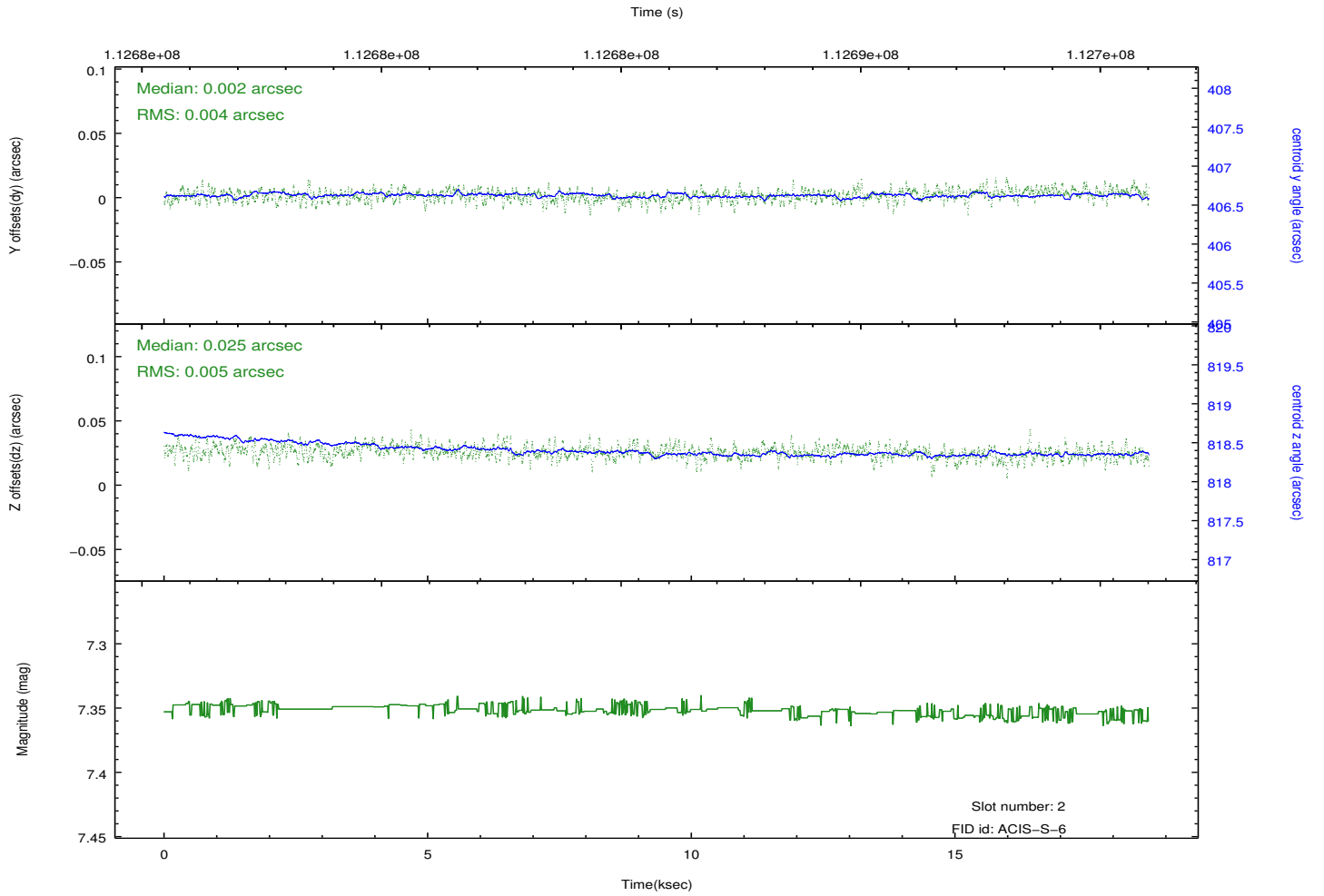
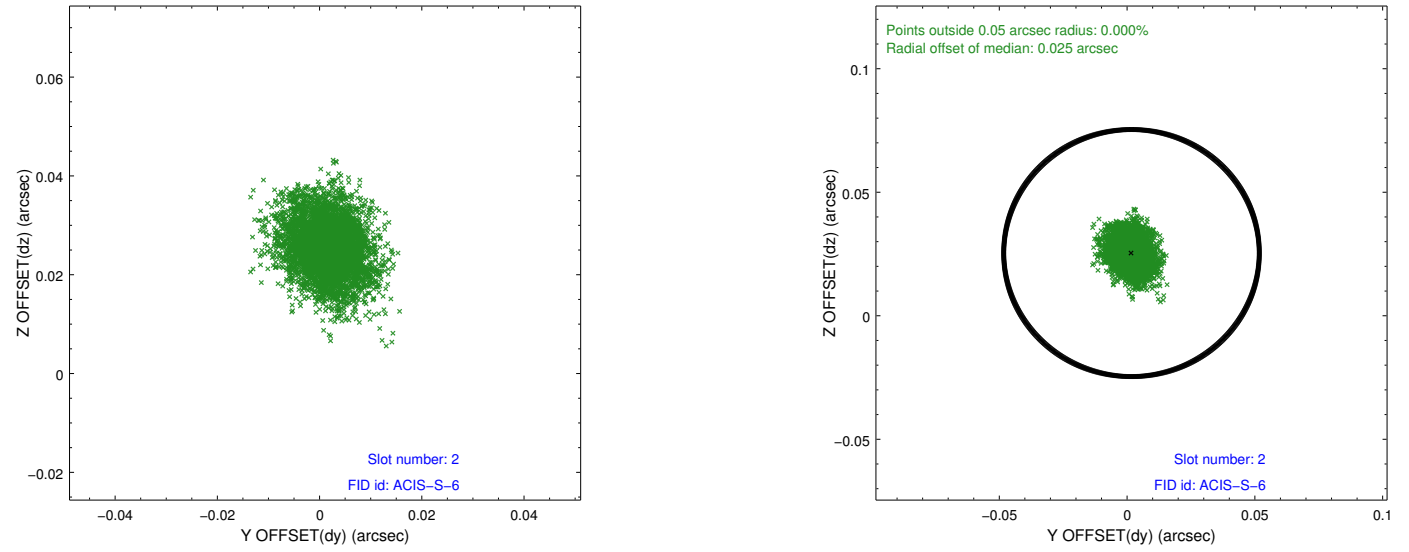
2.5.1 Slot 0



2.5.2 Slot 1



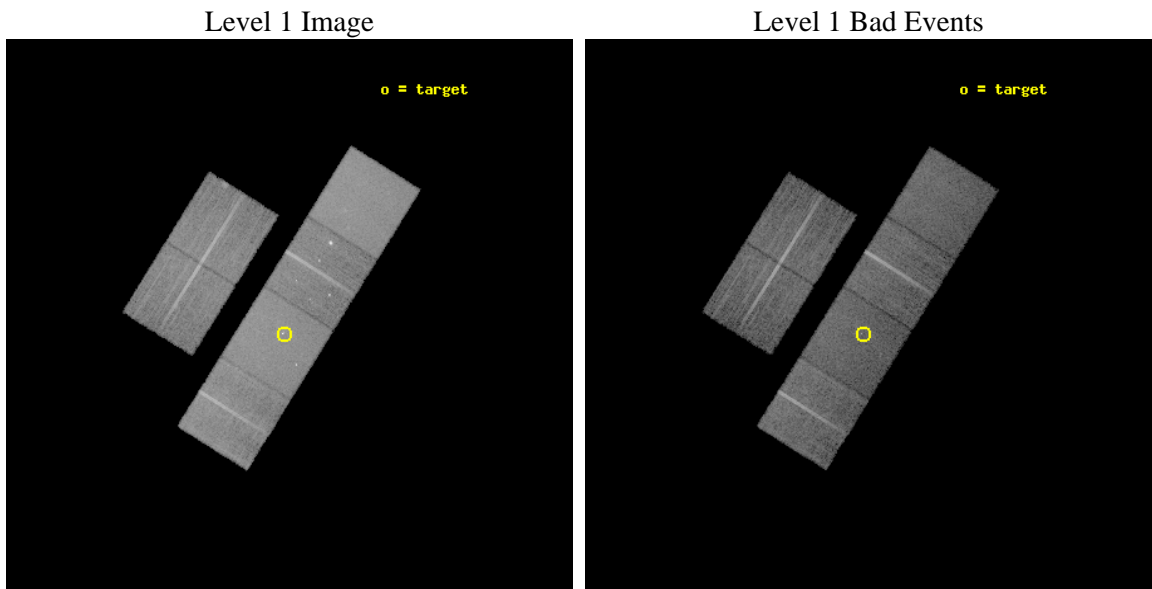
2.5.3 Slot 2



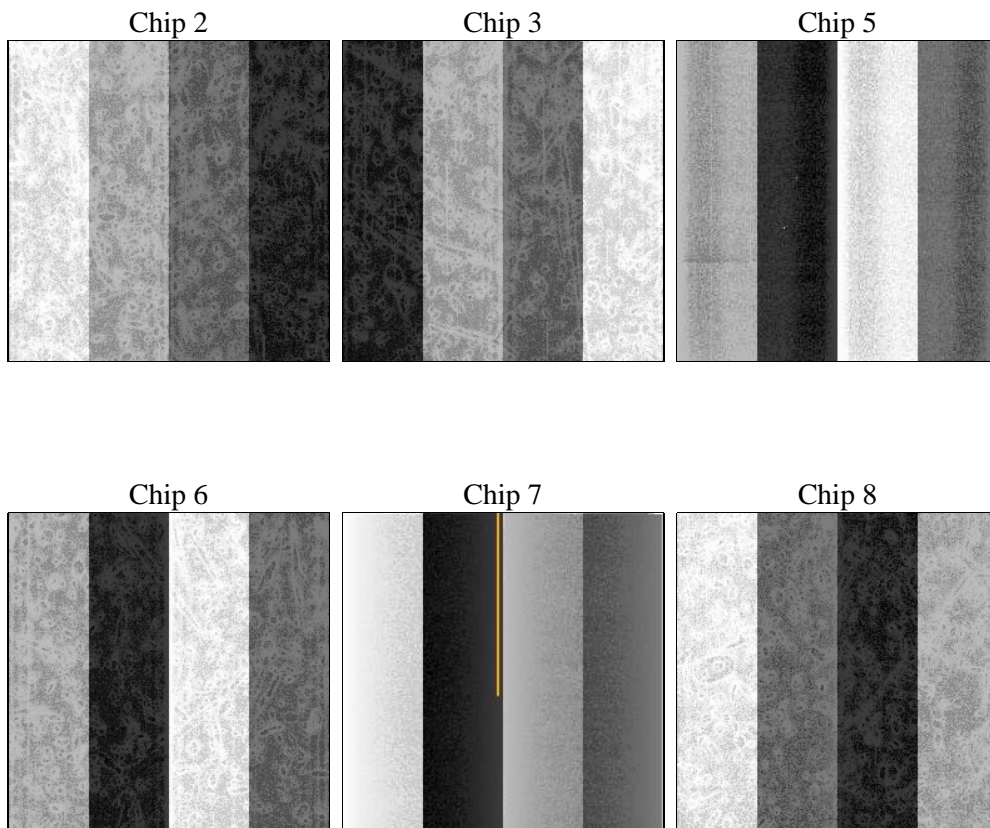
3 OBI Secondary

3.1 OBI

3.1.1 Images



3.1.2 Bias



3.1.3 Parameters

obi_num	2	Obi number	sched_exp_time	18000.000000	[s] Scheduled observation exposure time
ascdsver	8.4.5	Processing system revision	ontime	16159.5851762	Sum of GTIs [s]
caldsver	4.5.1.1	 	ontime2	16153.103863925	Sum of GTIs [s]
date	2012-09-21T09:47:16	Date and time of file creation	ontime3	16159.585674748	Sum of GTIs [s]
revision	3	Processing version of data	ontime5	16159.585295811	Sum of GTIs [s]
			ontime6	16159.585595027	Sum of GTIs [s]
			ontime7	16159.5851762	Sum of GTIs [s]
			ontime8	16159.585046723	Sum of GTIs [s]
			l1events	780209	Number of level 1 events

3.1.4 Events

	ccd 2	ccd 3	ccd 5	ccd 6	ccd 7	ccd 8		ccd 2	ccd 3	ccd 5	ccd 6	ccd 7	ccd 8
level 1 events	114350	108460	156676	116251	147813	136659	grade 0 events	6020	5562	6246	9452	7061	9269
rejected events	101054	95734	83076	98263	81345	107548		5%	5%	3%	8%	4%	6%
rejected %	88%	88%	53%	84%	55%	78%	grade 1 events	59	48	163	83	154	81
								0%	0%	0%	0%	0%	0%
							grade 2 events	2793	2487	21652	3073	13190	6761
								2%	2%	13%	2%	8%	4%
							grade 3 events	1201	1242	3379	1384	6034	2972
								1%	1%	2%	1%	4%	2%
							grade 4 events	1182	1250	3186	1386	5915	2790
								1%	1%	2%	1%	4%	2%
							grade 5 events	3782	4047	11362	4561	13290	5682
								3%	3%	7%	3%	8%	4%
							grade 6 events	2110	2198	39178	2703	34296	7328
								1%	2%	25%	2%	23%	5%
							grade 7 events	97203	91626	71510	93609	67873	101776
								85%	84%	45%	80%	45%	74%

A Summary

A.1 Status

V&V Scientist	Jen Lauer
V&V Date (YYYY-MM-DD)	2012.09.25
V&V Edition	1
V&V Disposition and Status	OK
V&V Charge Time	17.9048044

A.2 Comments