

# V&V Reference Report

## L2 ASCDS Version : 7.6.9

Observation 2078 - L2 Version 001  
Chandra X-Ray Center

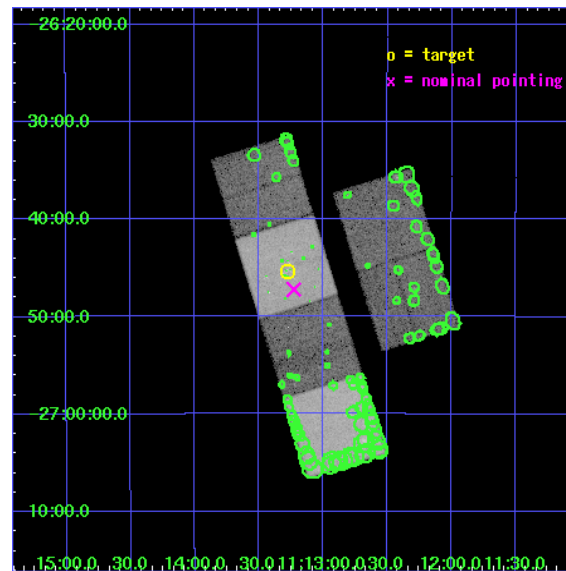
L2 Processing Date : Nov 25 2006

## Contents

<b>1</b>	<b>Front</b>	<b>2</b>
<b>2</b>	<b>OBI</b>	<b>3</b>
2.1	OBI . . . . .	3
2.1.1	Images . . . . .	3
2.1.2	Bias . . . . .	3
2.1.3	Parameters . . . . .	4
2.1.4	Events . . . . .	4
2.2	Compared Parameters . . . . .	5
2.3	Aspect . . . . .	6
2.4	Star Slots . . . . .	9
2.4.1	Slot 3 . . . . .	9
2.4.2	Slot 4 . . . . .	10
2.4.3	Slot 5 . . . . .	11
2.4.4	Slot 6 . . . . .	12
2.4.5	Slot 7 . . . . .	13
2.5	FID Slots . . . . .	14
2.5.1	Slot 0 . . . . .	14
2.5.2	Slot 1 . . . . .	15
2.5.3	Slot 2 . . . . .	16
<b>3</b>	<b>Point Sources</b>	<b>17</b>
<b>A</b>	<b>Summary</b>	<b>18</b>
A.1	Status . . . . .	18
A.2	Comments . . . . .	18

# 1 Front

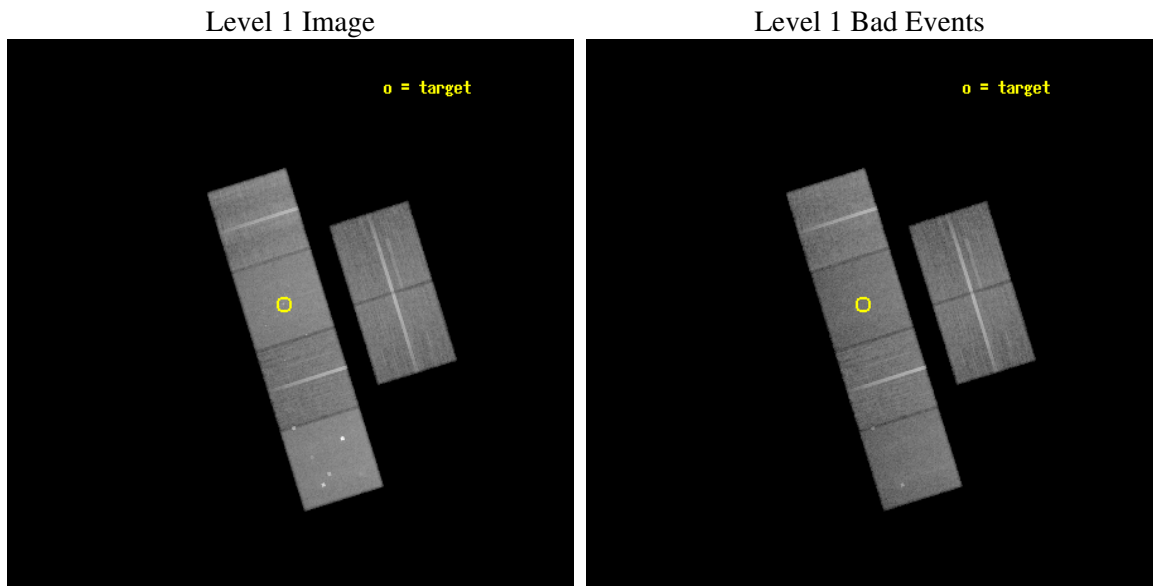
seq_num	600212
obs_id	2078
title	GALACTIC WINDS AND COOLING FLOWS IN ELLIPTICAL GALAXIES
observer	DR. Joel Bregman
object	NGC 3585
dtcycle	0
cycle	P
ra_targ	168.32
dec_targ	-26.755833
ra_nom	168.30698078778
dec_nom	-26.787056242322
roll_nom	252.67754840635
revision	2
ontime	35753.559073061
livetime	35300.825979869
ontime2	35753.559063047
ontime3	35756.800033301
ontime5	35753.559102982
ontime6	35756.800033301
ontime7	35753.559073061
ontime8	35753.559202582
l2events	335557



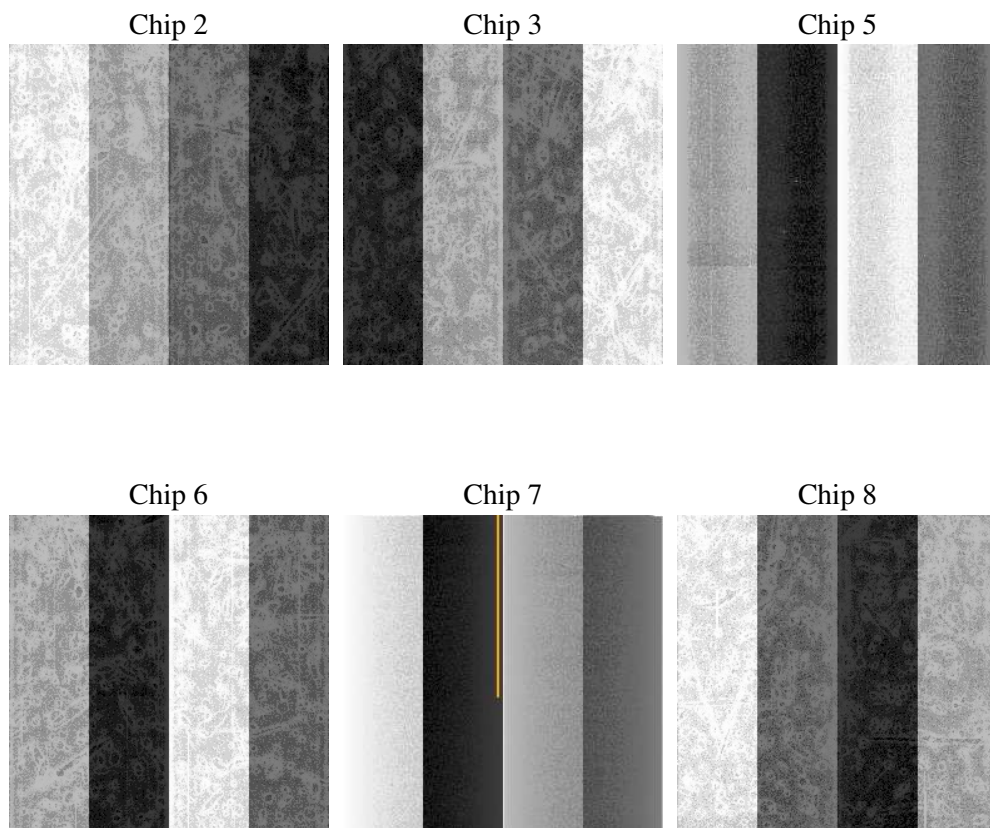
## 2 OBI

### 2.1 OBI

#### 2.1.1 Images



#### 2.1.2 Bias



### 2.1.3 Parameters

obi_num	0
ascdsver	7.6.9
caldsver	3.2.4
date	2006-11-25T05:30:43
revision	2

sched_exp_time	36000.000000
ontime	35757.945182368
ontime2	35754.70416227
ontime3	35761.186142609
ontime5	35757.94521229
ontime6	35761.186142609
ontime7	35757.945182368
ontime8	35757.945192292
l1events	1610154

### 2.1.4 Events

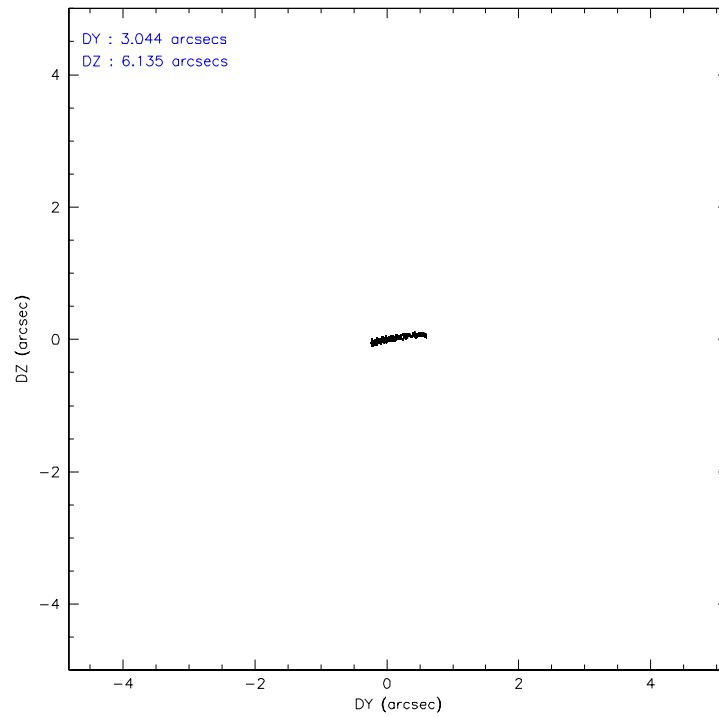
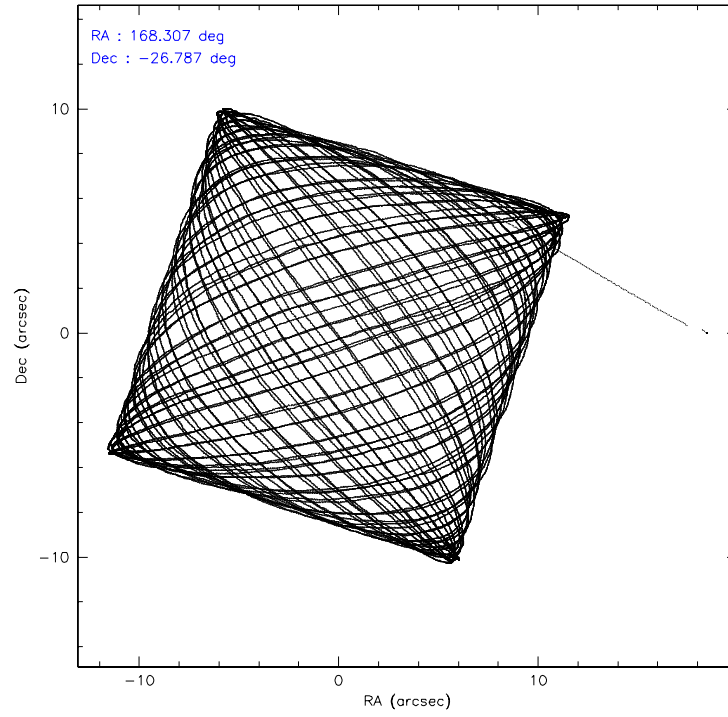
	ccd 2	ccd 3	ccd 5	ccd 6	ccd 7	ccd 8
level 1 events	235093	224916	328276	233591	293957	294321
rejected events	209408	199827	178822	207126	179223	233519
rejected %	89%	88%	54%	88%	60%	79%

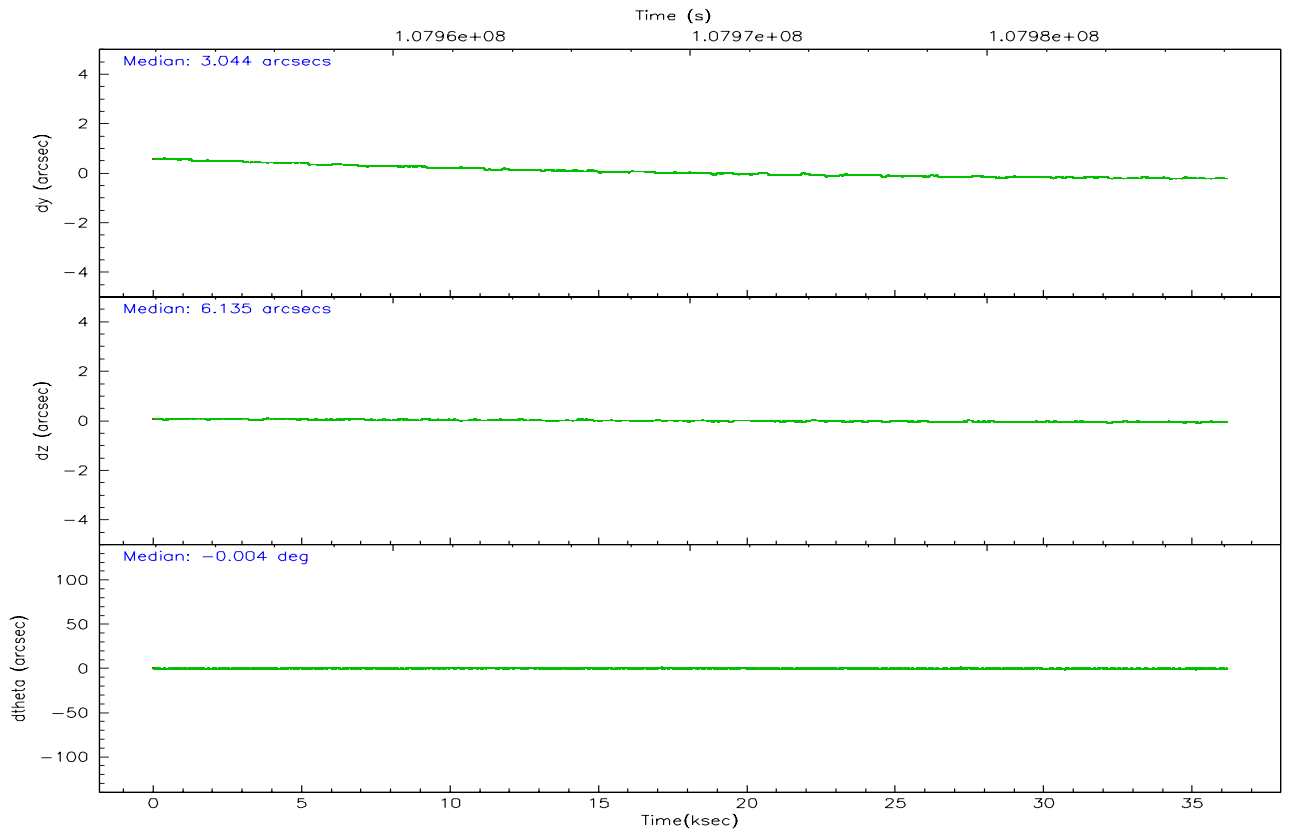
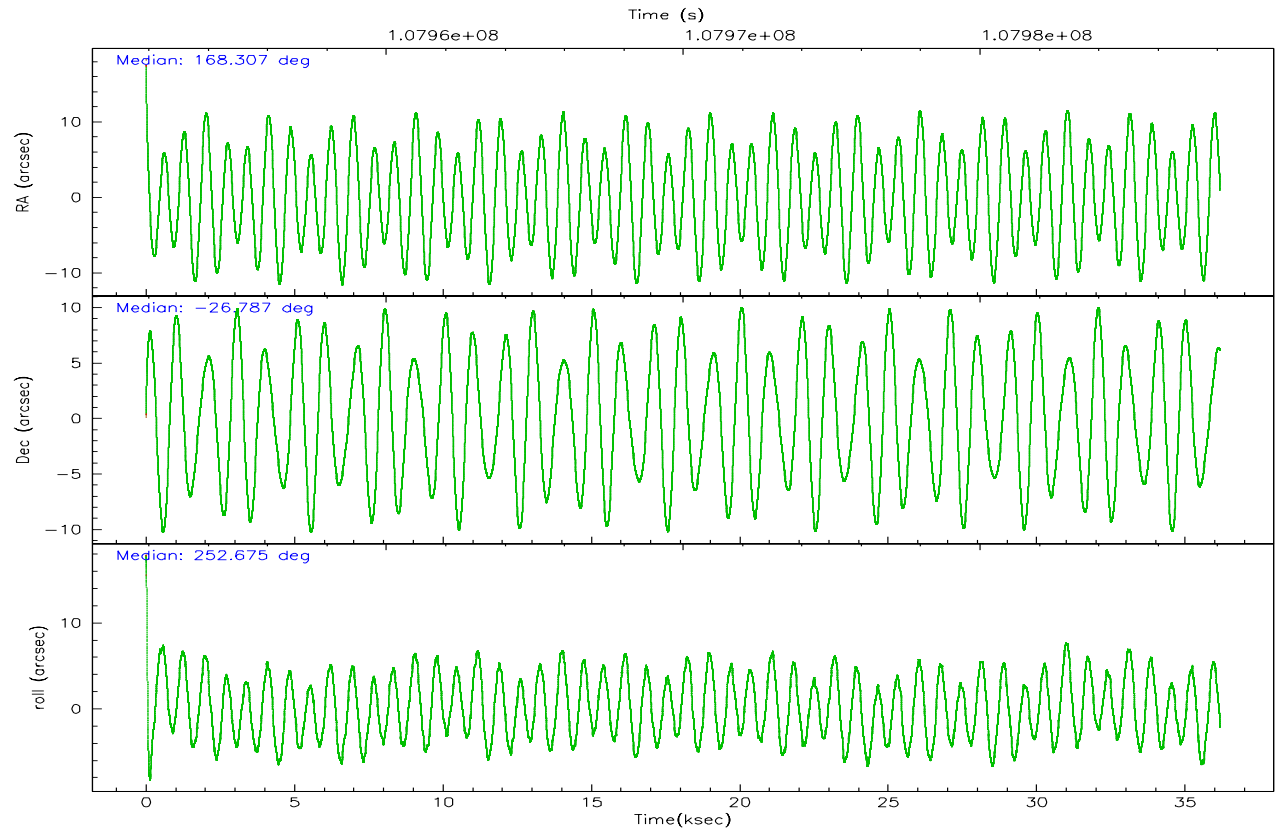
	ccd 2	ccd 3	ccd 5	ccd 6	ccd 7	ccd 8
grade 0 events	10779	10742	17728	10851	7977	18752
	4%	4%	5%	4%	2%	6%
grade 1 events	113	105	399	102	163	175
	0%	0%	0%	0%	0%	0%
grade 2 events	5605	4975	45376	5275	28139	13078
	2%	2%	13%	2%	9%	4%
grade 3 events	2460	2372	3636	2615	6338	6812
	1%	1%	1%	1%	2%	2%
grade 4 events	2407	2463	3253	2593	6299	6219
	1%	1%	0%	1%	2%	2%
grade 5 events	8018	8576	16371	9746	19794	12038
	3%	3%	4%	4%	6%	4%
grade 6 events	4434	4538	79478	5132	65992	15945
	1%	2%	24%	2%	22%	5%
grade 7 events	201277	191145	162035	197277	159255	221302
	85%	84%	49%	84%	54%	75%

## 2.2 Compared Parameters

Parameter	Planned	Actual	Parameter	Planned	Actual
Instrument	ACIS	ACIS	Obspar format version number	6	6
Detector	ACIS-235678	ACIS-235678	Obspar file type	PREDICTED	ACTUAL
Grating	NONE	NONE	Obspar update status	NONE	UPDATED
Data mode	FAINT	FAINT	Number of optional ACIS chips dropped	0	0
Observation mode	POINTING	POINTING	On-chip summing requested	N	N
Pointing RA	168.299956	168.3069807877843	Subarray requested	NONE	NONE
Pointing Dec	-26.760502	-26.78705624232202	Alternating exposures requested	N	N
Pointing Roll	252.517746	252.6775484063454	Primary exposure time	0.000000	3.2
SIM focus pos (mm)	-0.684267	-0.6828225247311905			
SIM defocus (mm)	0	0.001444936568705701			
SIM translation stage pos (mm)	-190.132523	-190.1400660498719			
SIM translation stage offset (mm)	0	0.00754346686406393			
Observation start time	107952086.184000	107951244.37631			
Observation start date	2001-06-03T10:40:22	2001-06-03T10:27:24			
Observation end time	107988086.184000	107988735.80277			
Observation end date	2001-06-03T20:40:22	2001-06-03T20:52:15			
Read mode	TIMED	TIMED			

## 2.3 Aspect





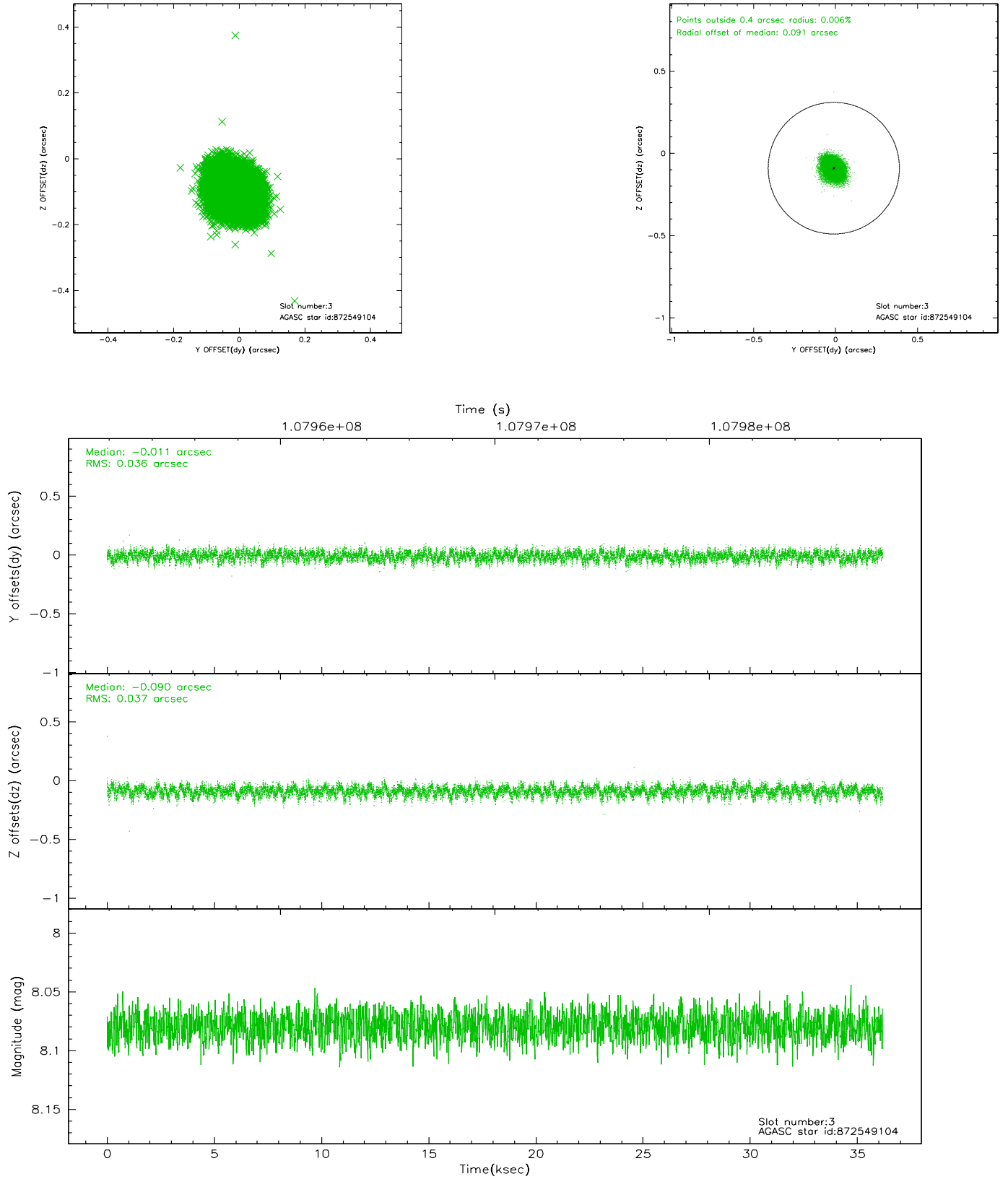
### Slot Statistics

slot	status	id	mag	n_pts	med_dy	med_dz	dr1	dr2	ra	dec	mean_y	mean_z
0	FID	ACIS-S-3	7.36	8824	-0.094	-0.043	0.007	0.012	0.000000	0.000000	57.36	-1856.39
1	FID	ACIS-S-4	7.20	8824	-0.039	0.070	0.010	0.017	0.000000	0.000000	2157.56	181.23
2	FID	ACIS-S-5	7.23	8824	0.106	-0.017	0.009	0.017	0.000000	0.000000	-1808.45	174.85
3	GUIDE	872549104	8.08	17644	-0.011	-0.090	0.055	0.090	168.431052	-26.854580	197.33	503.50
4	GUIDE	872547200	7.86	17649	0.003	0.002	0.050	0.081	168.685987	-27.308159	1511.92	1770.92
5	GUIDE	872548672	8.91	17647	0.129	-0.060	0.073	0.122	168.474975	-26.730685	-270.28	504.83
6	GUIDE	872547832	9.59	17636	-0.005	0.081	0.090	0.148	168.641725	-26.677801	-612.29	959.92
7	GUIDE	872549456	9.10	17637	-0.116	0.068	0.075	0.121	168.830096	-26.635430	-938.16	1493.26

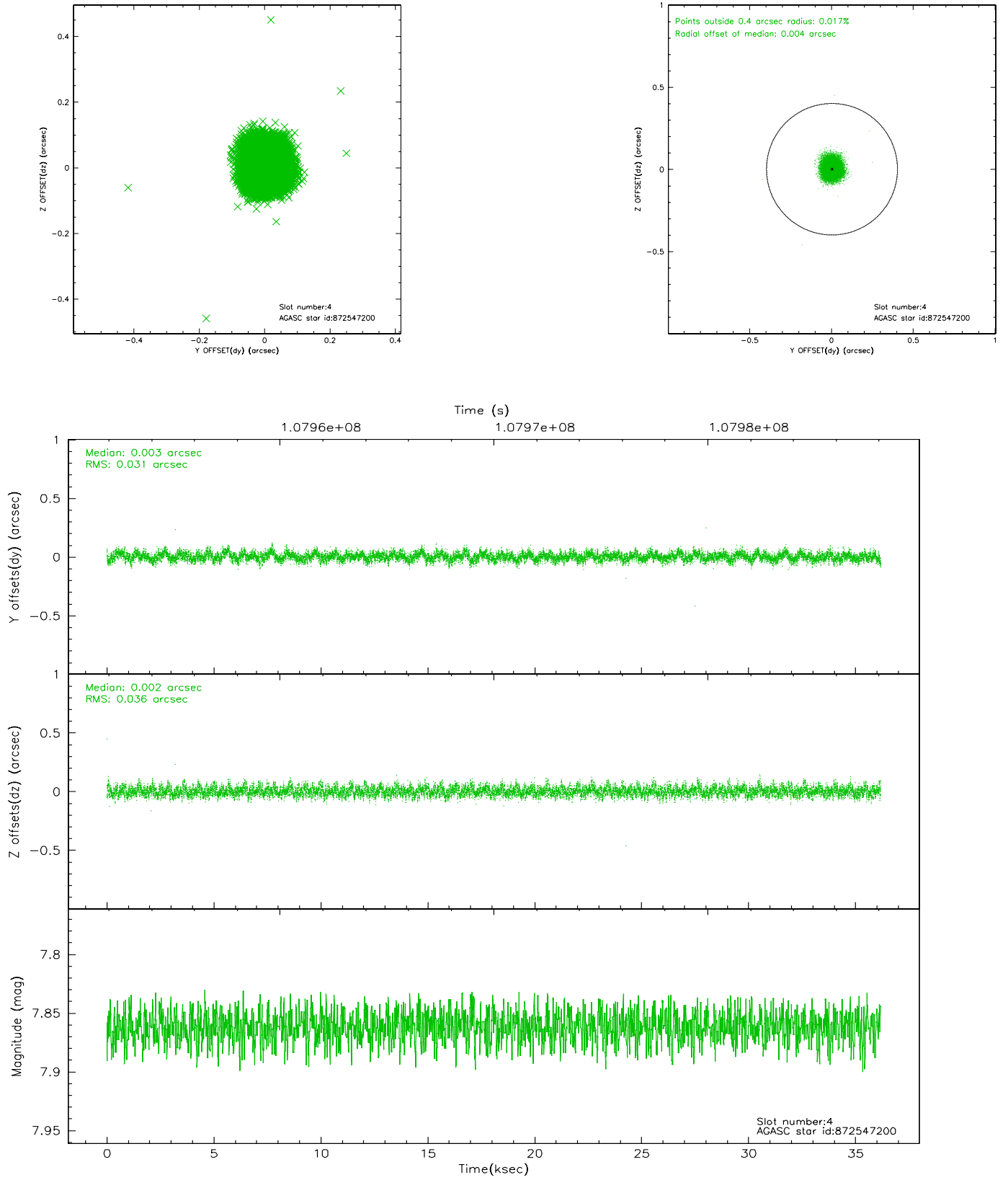


## 2.4 Star Slots

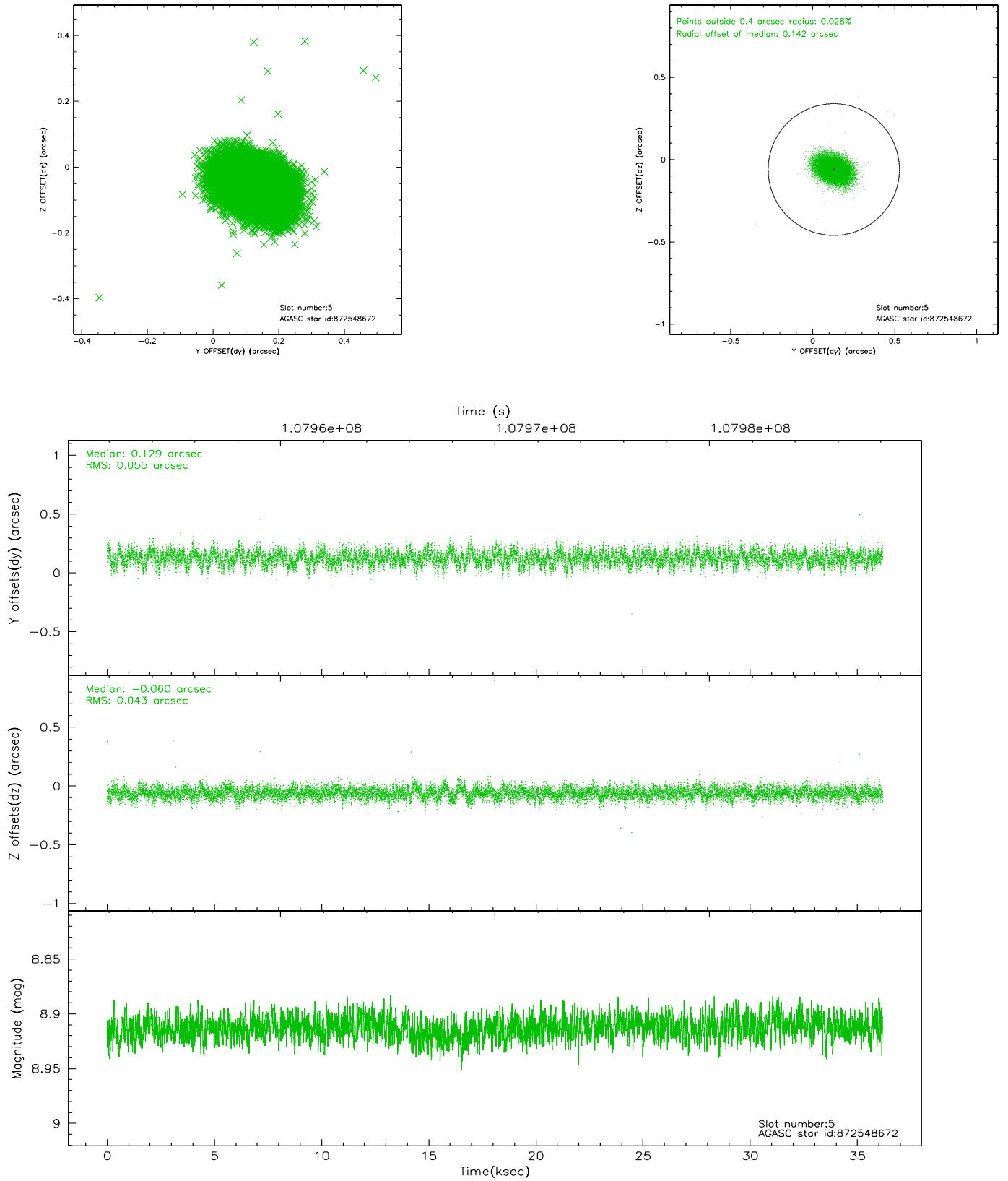
### 2.4.1 Slot 3



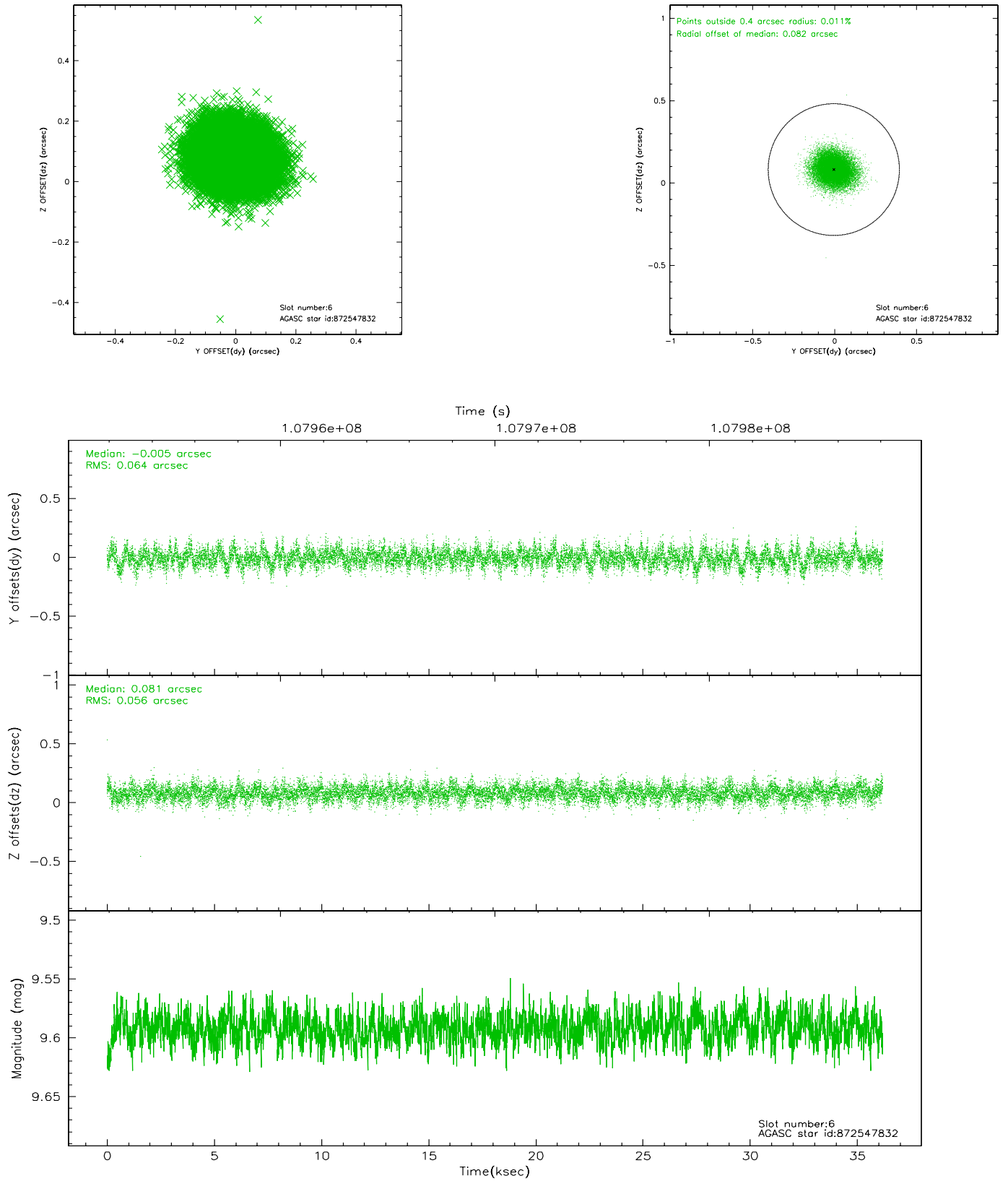
## 2.4.2 Slot 4



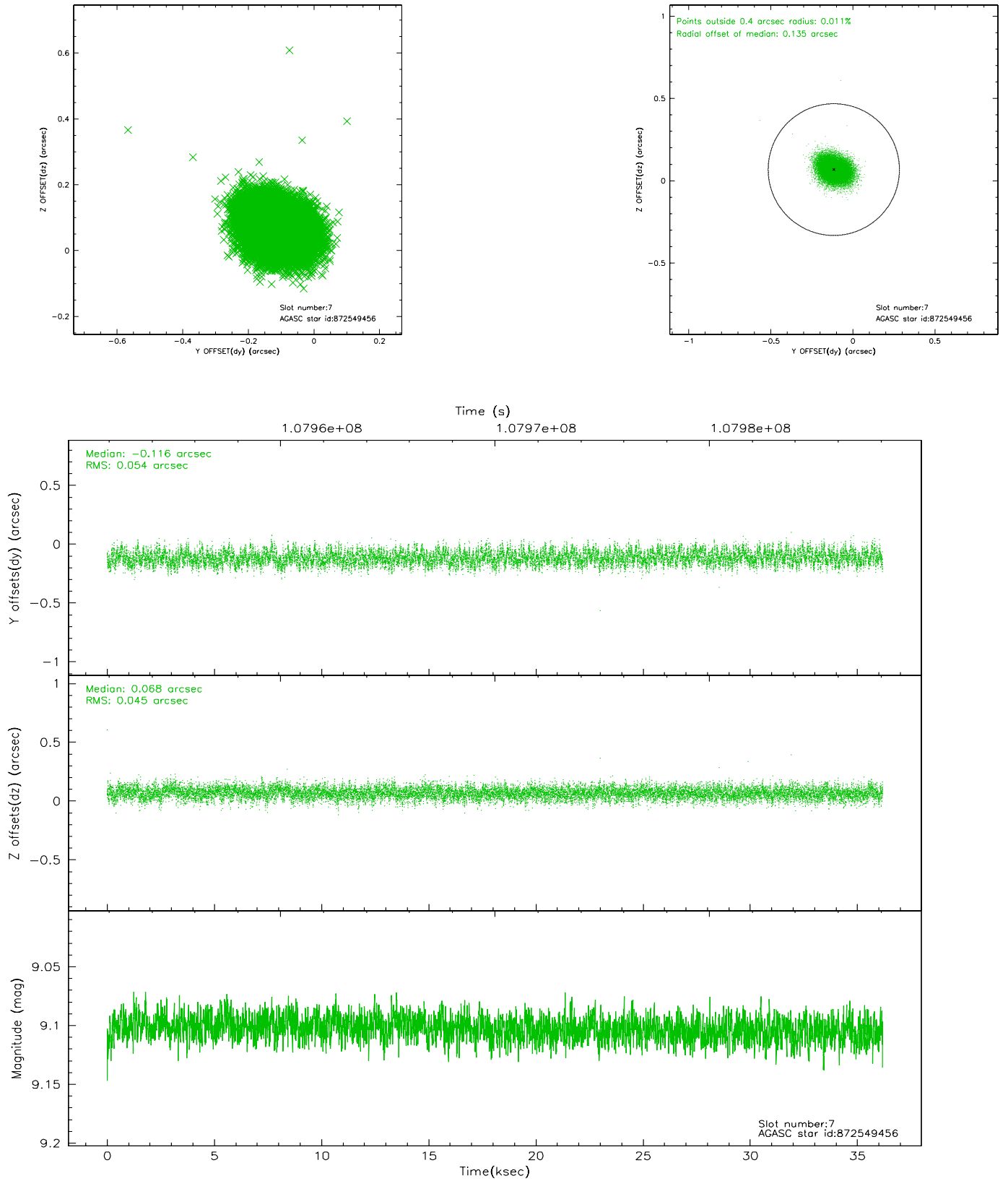
### 2.4.3 Slot 5



## 2.4.4 Slot 6

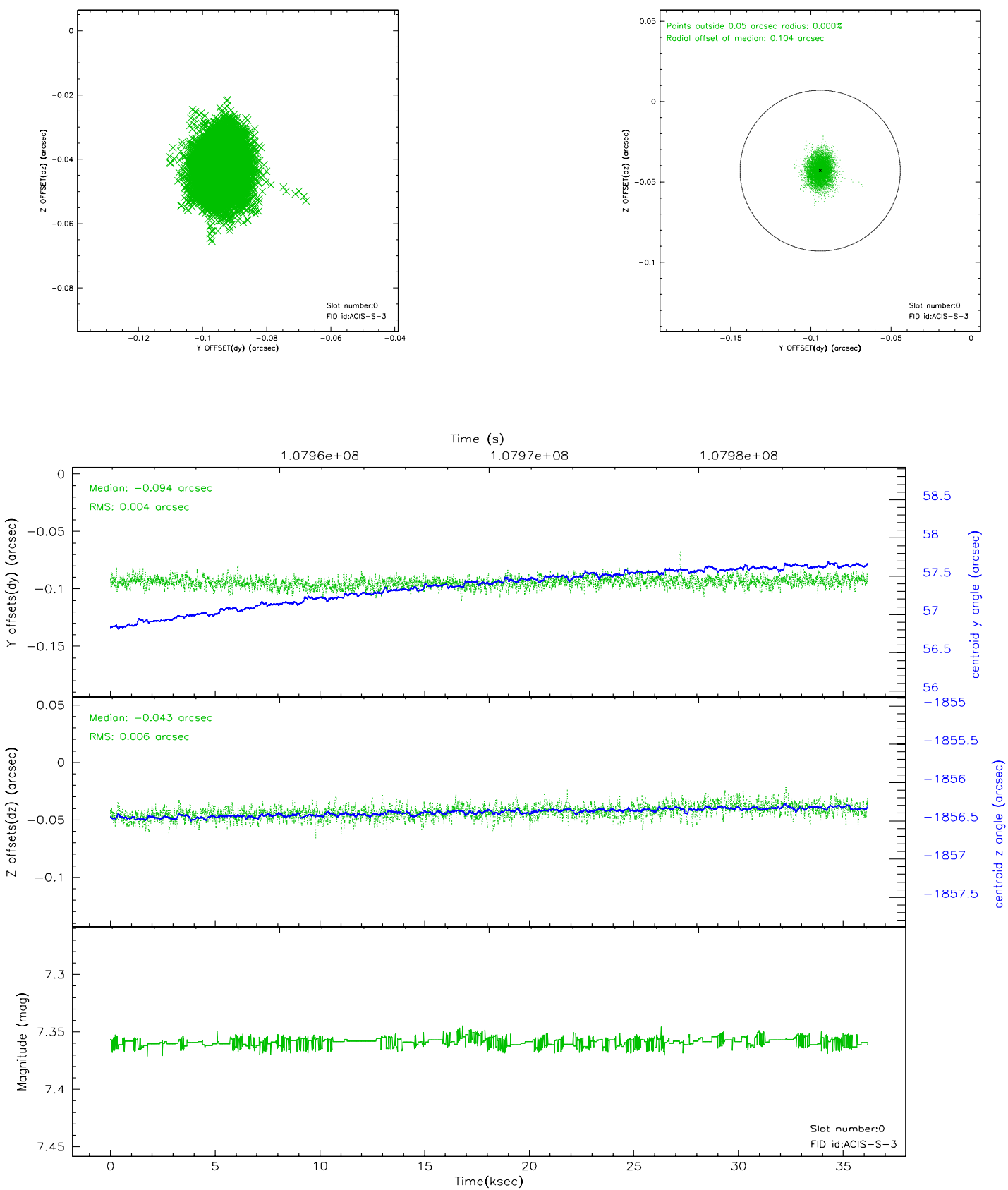


## 2.4.5 Slot 7

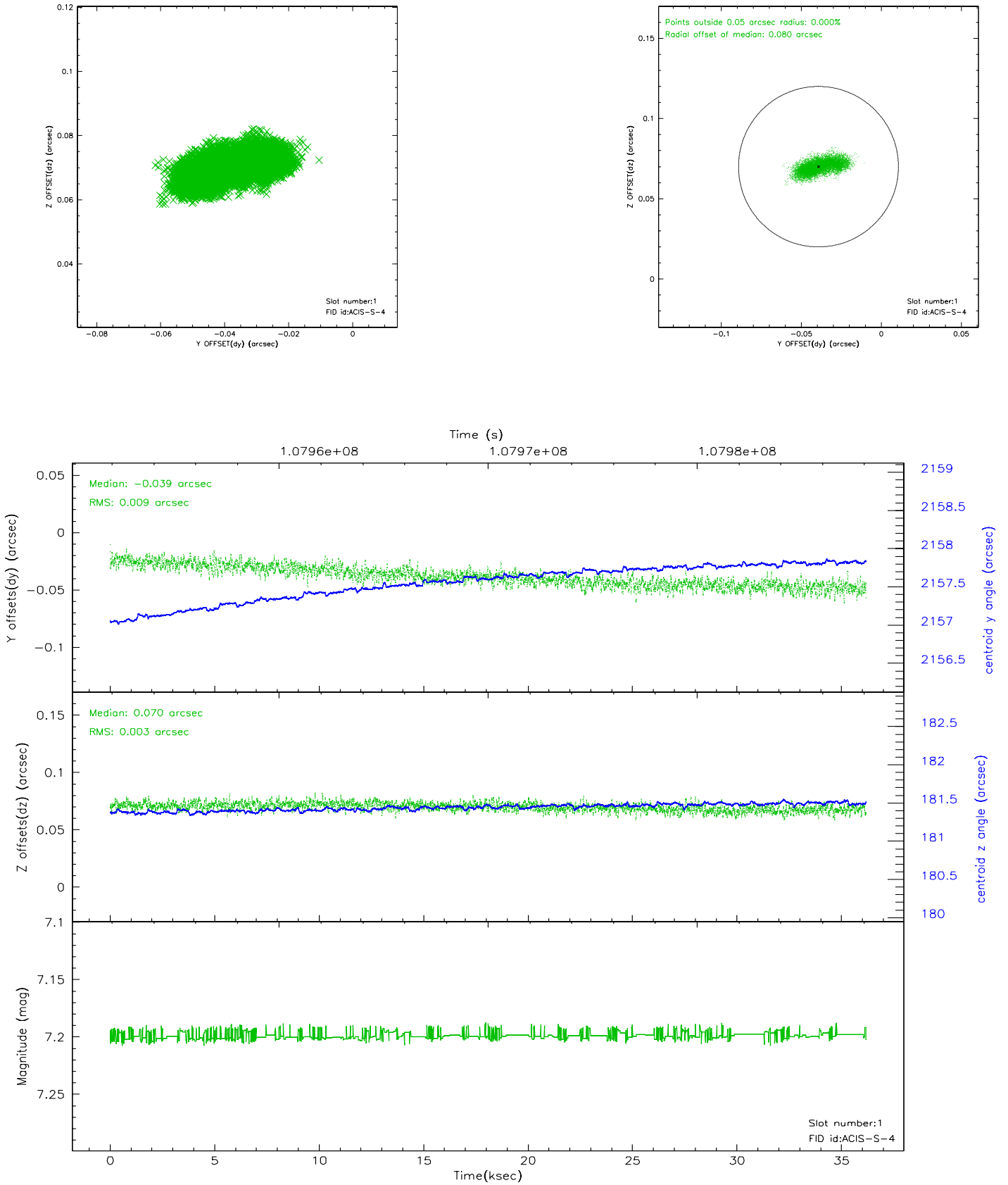


## 2.5 FID Slots

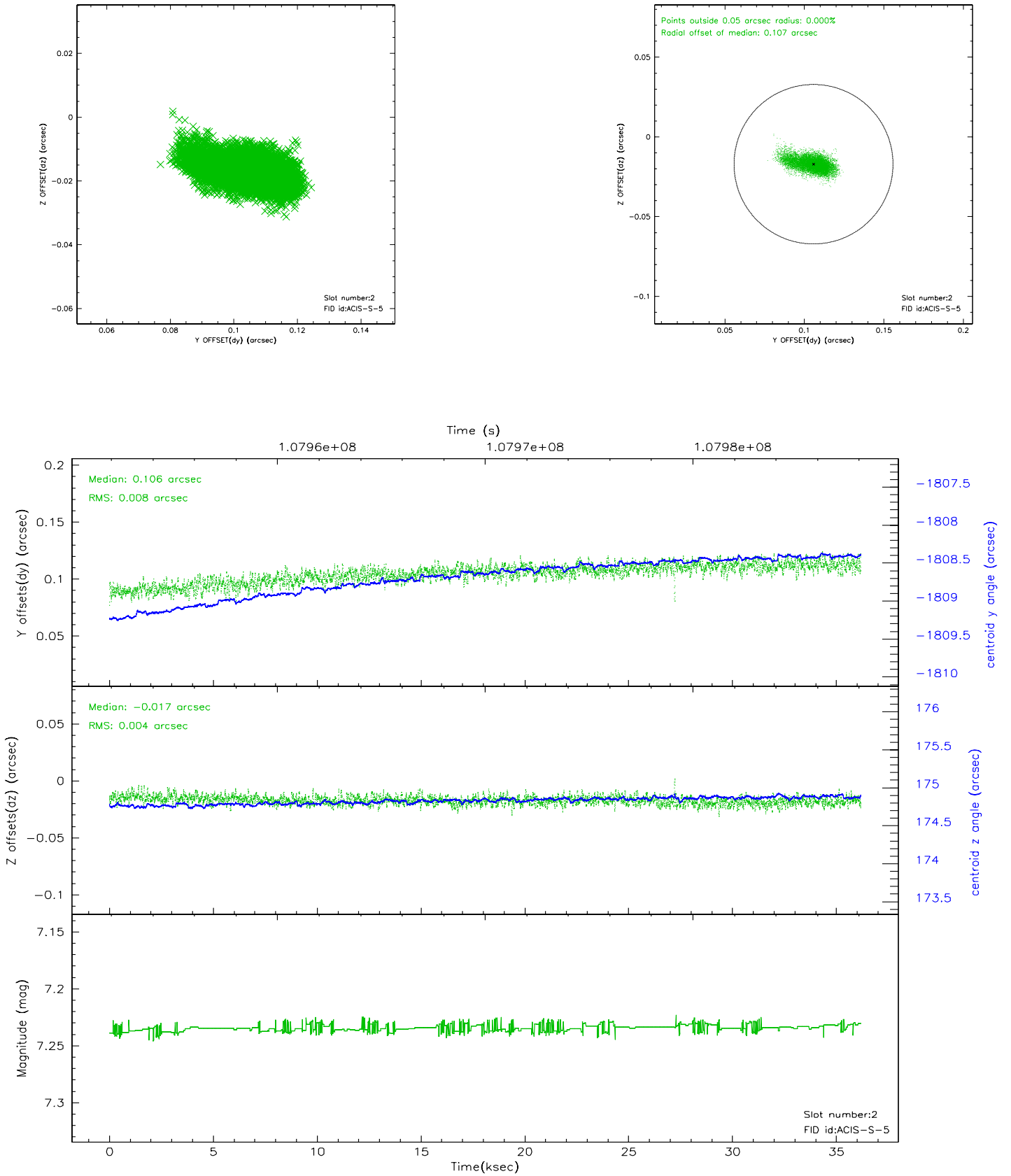
### 2.5.1 Slot 0



## 2.5.2 Slot 1

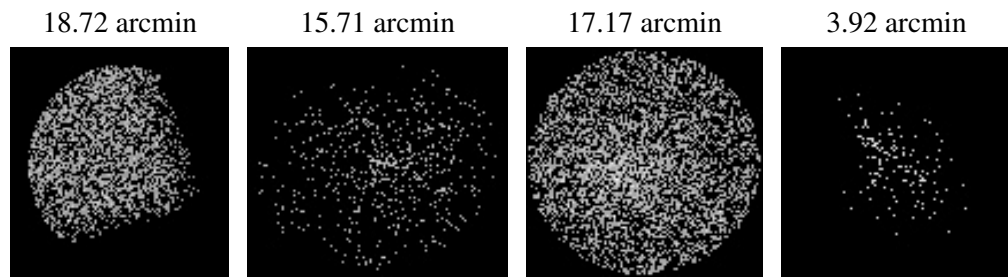


### 2.5.3 Slot 2





### 3 Point Sources



## A Summary

### A.1 Status

V&V Scientist	Jen Lauer
V&V Date (YYYY-MM-DD)	2006.11.27
V&V Edition	1
V&V Disposition and Status	OK
V&V Charge Time	35.747

### A.2 Comments