

V&V Reference Report

L2 ASCDS Version : 8.4.5

Observation 2063 - L2 Version 4
Chandra X-Ray Center

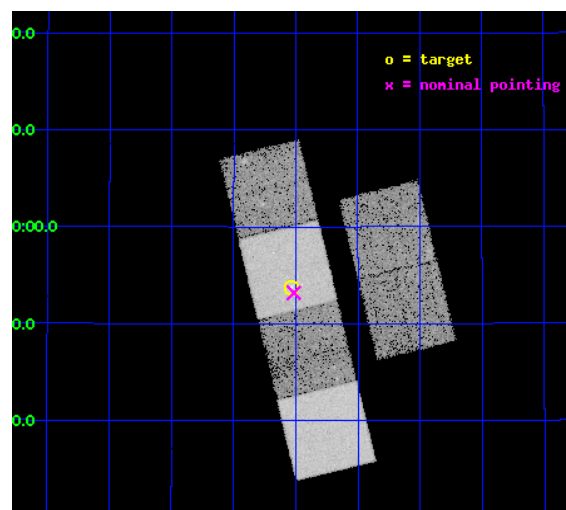
L2 Processing Date : Sep 20 2012

Contents

1	Front	2
2	OBI	3
2.1	OBI	3
2.1.1	Images	3
2.1.2	Bias	3
2.1.3	Parameters	4
2.1.4	Events	4
2.2	Compared Parameters	5
2.3	Aspect	6
2.4	Star Slots	9
2.4.1	Slot 3	9
2.4.2	Slot 4	10
2.4.3	Slot 5	11
2.4.4	Slot 6	12
2.4.5	Slot 7	13
2.5	FID Slots	14
2.5.1	Slot 0	14
2.5.2	Slot 1	15
2.5.3	Slot 2	16
A	Summary	17
A.1	Status	17
A.2	Comments	17

1 Front

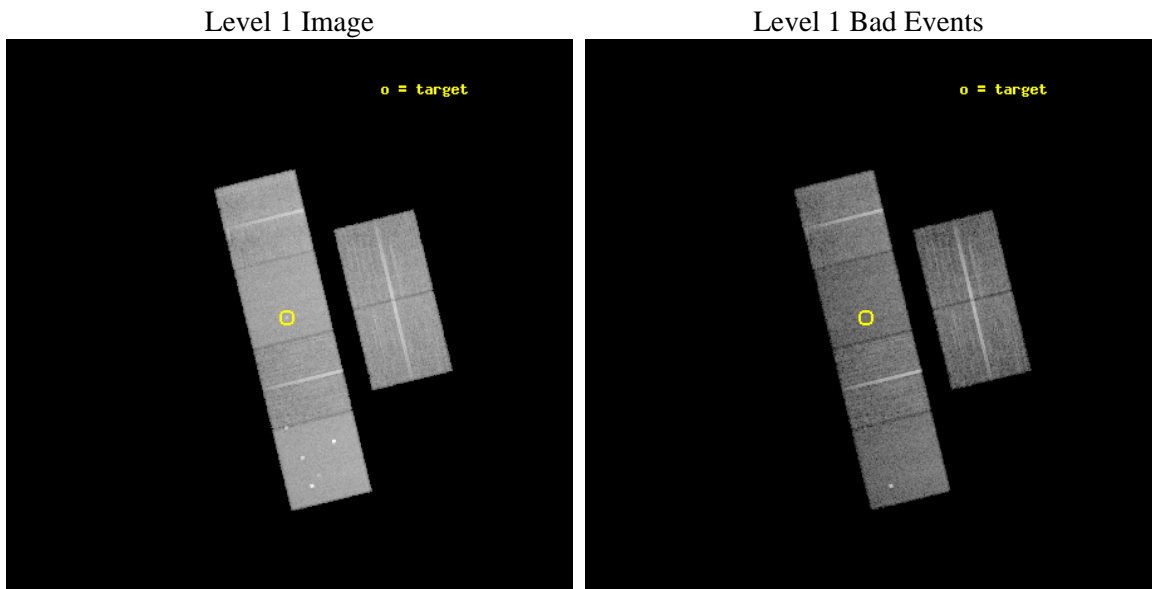
seq_num	600197	Sequence number
obs_id	2063	Observation id
title	THE X-RAY POINT SOURCE POPULATION IN SPIRAL GALAXIES	Proposal titl
observer	Dr Andrea Prestwich	Principal investigator
object	NGC 4314	Source name
dtcycle	0	
cycle	P	events from which exps? Prim/Second/Both
ra_targ	185.633333	Observer's specified target RA [deg]
dec_targ	29.895278	Observer's specified target Dec [deg]
ra_nom	185.62875033859	Nominal RA [deg]
dec_nom	29.886369826164	Nominal Dec [deg]
roll_nom	256.35383100877	Nominal Roll [deg]
revision	4	Processing version of data
ontime	16249.559054866	Sum of GTIs [s]
livetime	16043.797353804	Livetime [s]
ontime2	16249.559084773	Sum of GTIs [s]
ontime3	16246.318114534	Sum of GTIs [s]
ontime5	16249.559054866	Sum of GTIs [s]
ontime6	16249.559054866	Sum of GTIs [s]
ontime7	16249.559054866	Sum of GTIs [s]
ontime8	16246.318094626	Sum of GTIs [s]
l2events	169141	Number of level 2 events



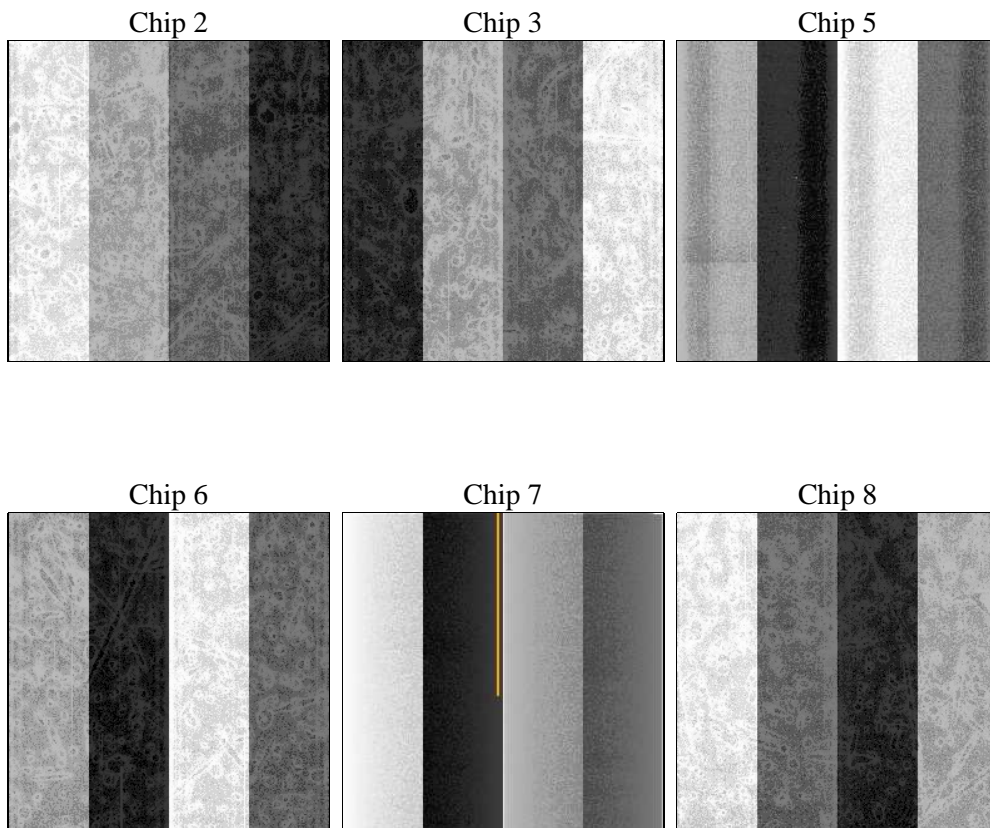
2 OBI

2.1 OBI

2.1.1 Images



2.1.2 Bias



2.1.3 Parameters

obi_num	0	Obi number	sched_exp_time	16500.000000	[s] Scheduled observation exposure time
ascdsver	8.4.5	Processing system revision	ontime	16249.559054866	Sum of GTIs [s]
caldsver	4.5.1.1	 	ontime2	16249.559084773	Sum of GTIs [s]
date	2012-09-20T05:17:57	Date and time of file creation	ontime3	16246.318114534	Sum of GTIs [s]
revision	4	Processing version of data	ontime5	16249.559054866	Sum of GTIs [s]
			ontime6	16249.559054866	Sum of GTIs [s]
			ontime7	16249.559054866	Sum of GTIs [s]
			ontime8	16246.318094626	Sum of GTIs [s]
			l1events	751928	Number of level 1 events

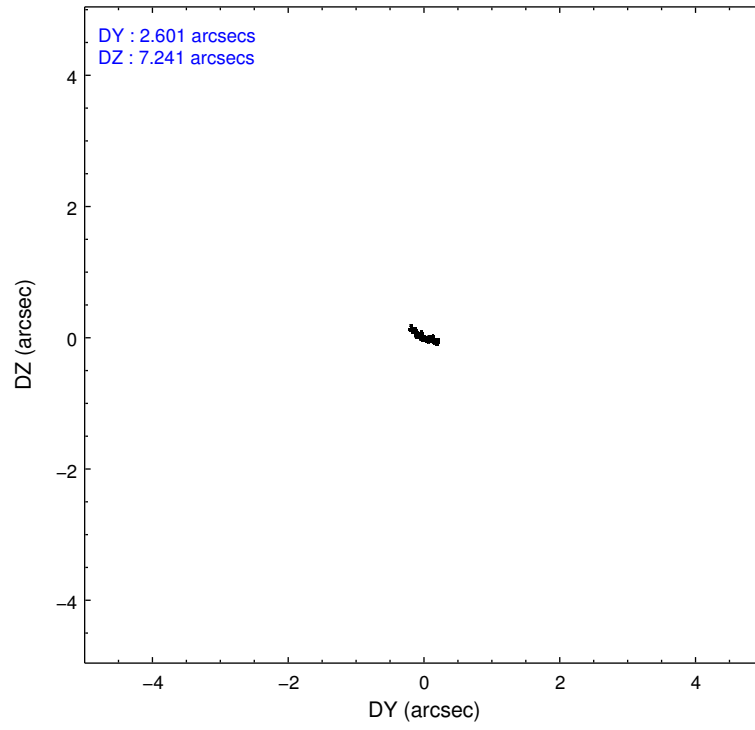
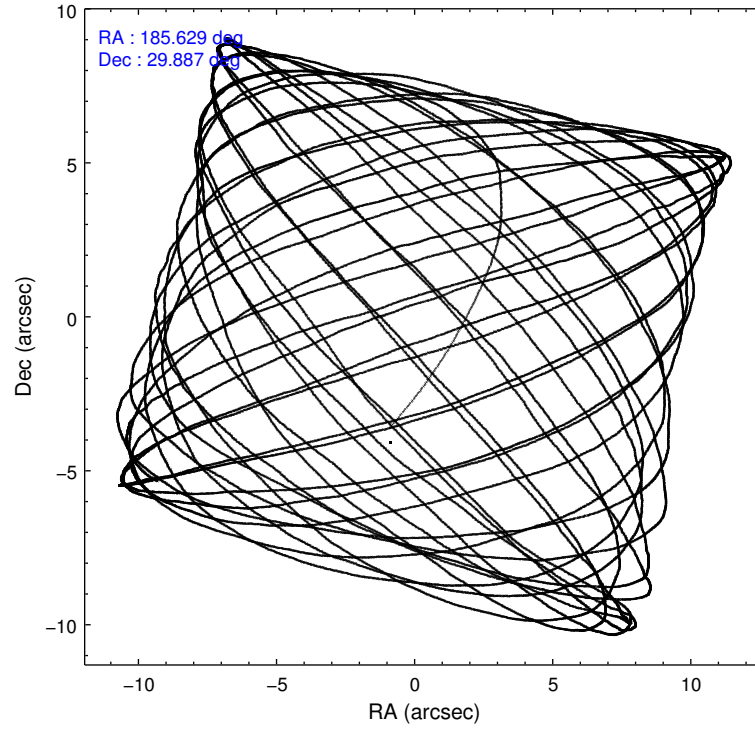
2.1.4 Events

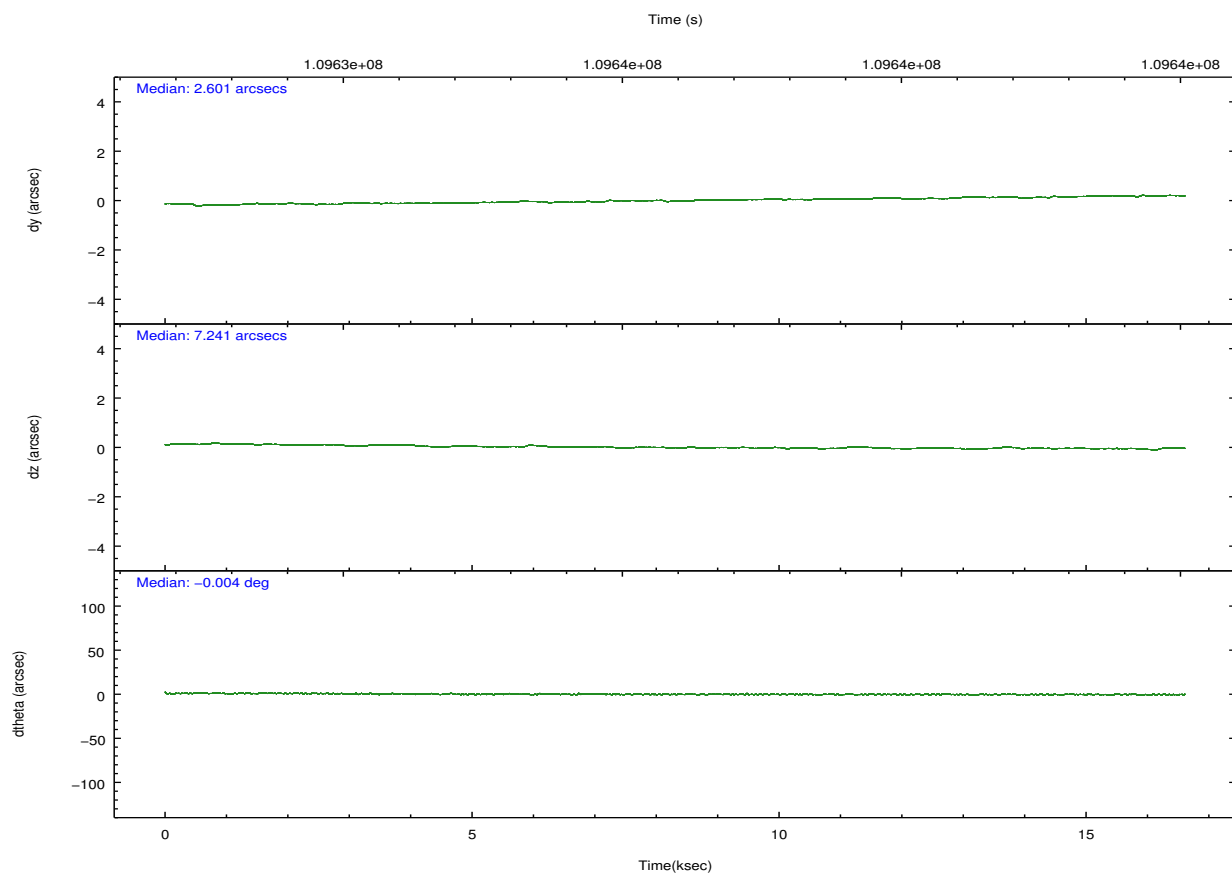
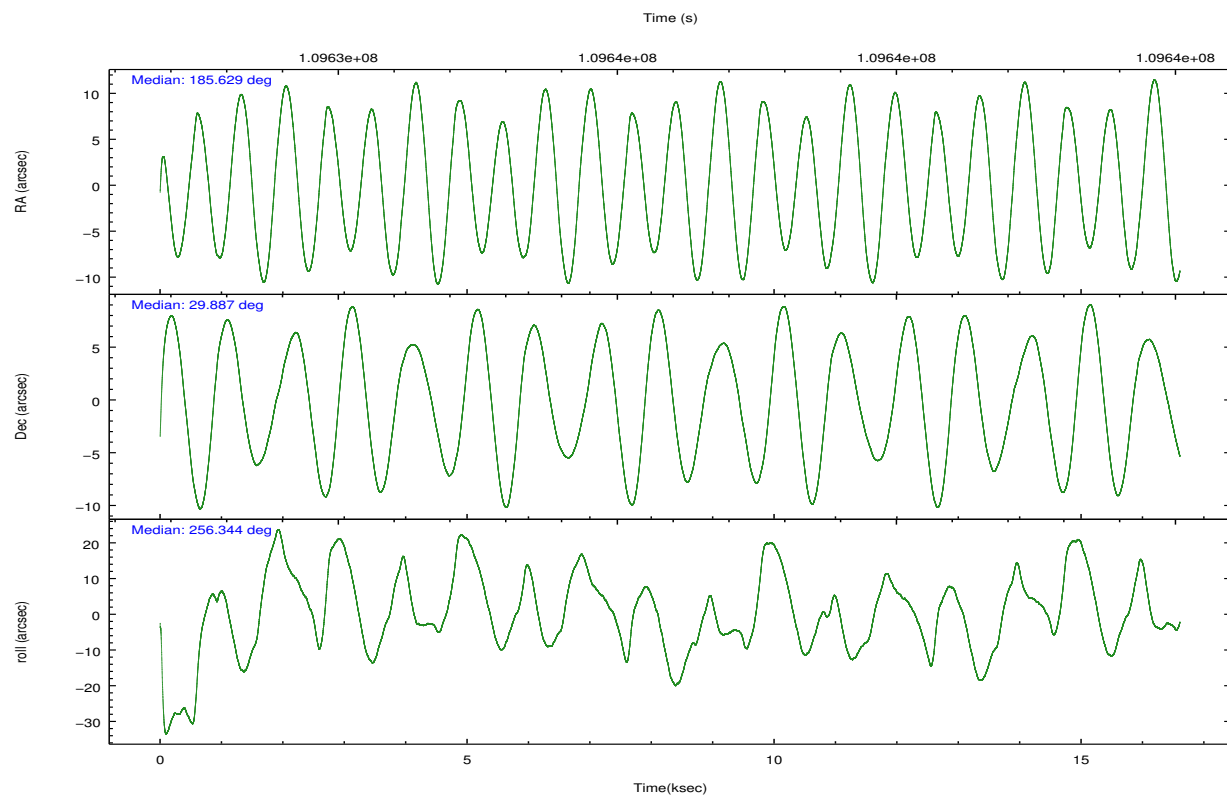
	ccd 2	ccd 3	ccd 5	ccd 6	ccd 7	ccd 8		ccd 2	ccd 3	ccd 5	ccd 6	ccd 7	ccd 8
level 1 events	107456	103538	157568	107233	138783	137350	grade 0 events	5390	5247	11455	5116	6166	8759
rejected events	94999	91336	81685	94559	78899	110457		5%	5%	7%	4%	4%	6%
rejected %	88%	88%	51%	88%	56%	80%	grade 1 events	47	48	208	51	122	89
								0%	0%	0%	0%	0%	0%
							grade 2 events	2501	2446	21789	2491	11956	5719
								2%	2%	13%	2%	8%	4%
							grade 3 events	1176	1140	3125	1288	5457	2898
								1%	1%	1%	1%	3%	2%
							grade 4 events	1163	1179	3001	1255	5368	2713
								1%	1%	1%	1%	3%	1%
							grade 5 events	3714	4064	11522	4312	13136	5595
								3%	3%	7%	4%	9%	4%
							grade 6 events	2229	2193	36539	2531	30958	6839
								2%	2%	23%	2%	22%	4%
							grade 7 events	91236	87221	69929	90189	65620	104738
								84%	84%	44%	84%	47%	76%

2.2 Compared Parameters

Parameter	Planned	Actual	Parameter	Planned	Actual
Instrument	ACIS	ACIS	Obspar format version number	7	7
Detector	ACIS-235678	ACIS-235678	Obspar file type	PREDICTED	ACTUAL
Grating	NONE	NONE	Obspar update status	NONE	UPDATED
Data mode	FAINT	FAINT	Number of optional ACIS chips dropped	0	0
Observation mode	POINTING	POINTING	On-chip summing requested	N	N
[deg] Pointing RA	185.619584	185.6287503385923	Subarray requested	NONE	NONE
[deg] Pointing Dec	29.912449	29.88636982616447	Alternating exposures requested	N	N
[deg] Pointing Roll	256.201740	256.3538310087655	[s] Primary exposure time	0.000000	3.2
[mm] SIM focus pos	-0.684267	-0.6828225247311905			
[mm] SIM defocus	0	0.001444936568705701			
[mm] SIM translation stage pos	-190.132523	-190.1400660498719			
[mm] SIM translation stage offset	0	0.00754346686406393			
[s] Observation start time (MET)	109627751.184000	109626457.8041			
Observation start date	2001-06-22T20:08:07	2001-06-22T19:47:37			
[s] Observation end time (MET)	109644251.184000	109645000.05483			
Observation end date	2001-06-23T00:43:07	2001-06-23T00:56:40			
Read mode	TIMED	TIMED			

2.3 Aspect



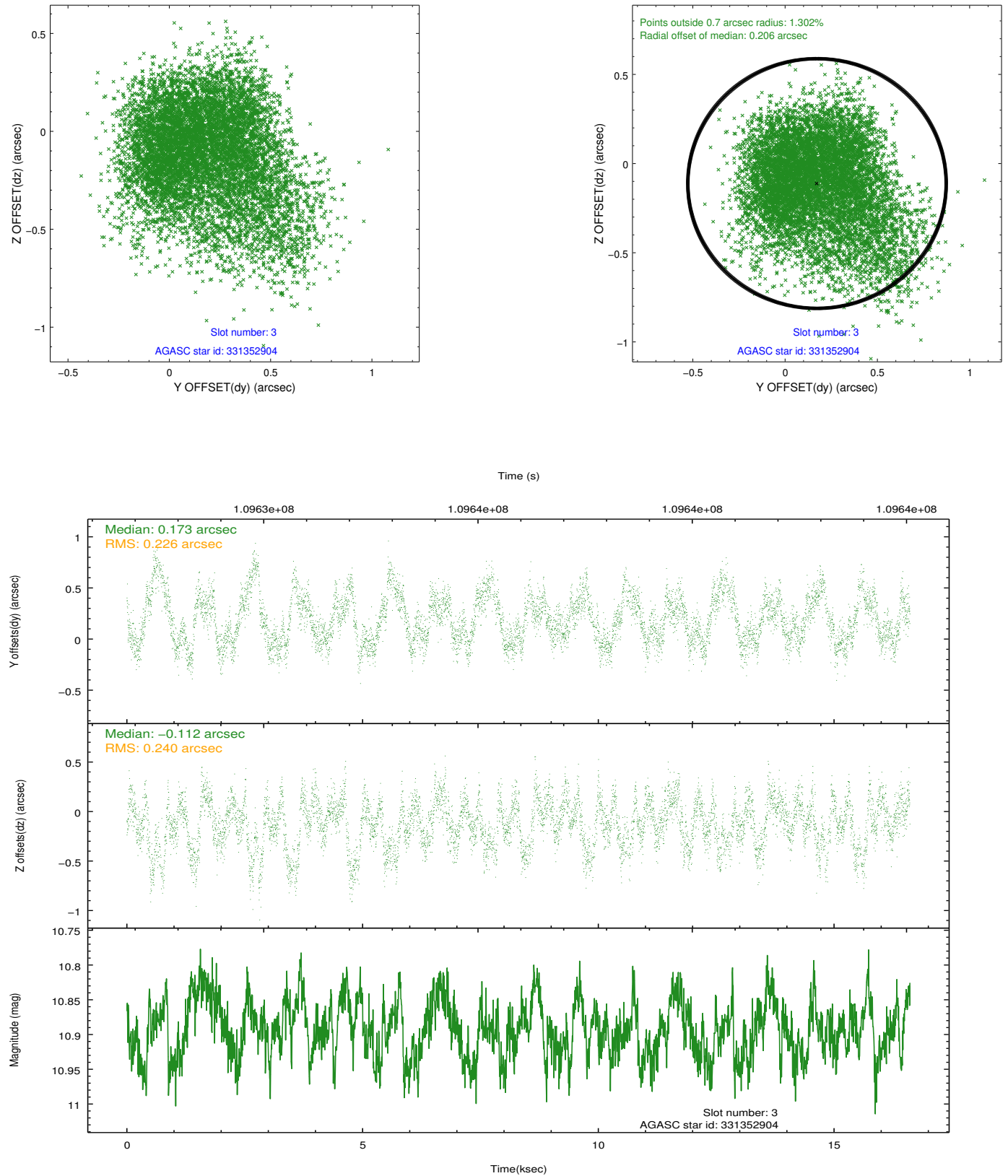


Slot Statistics

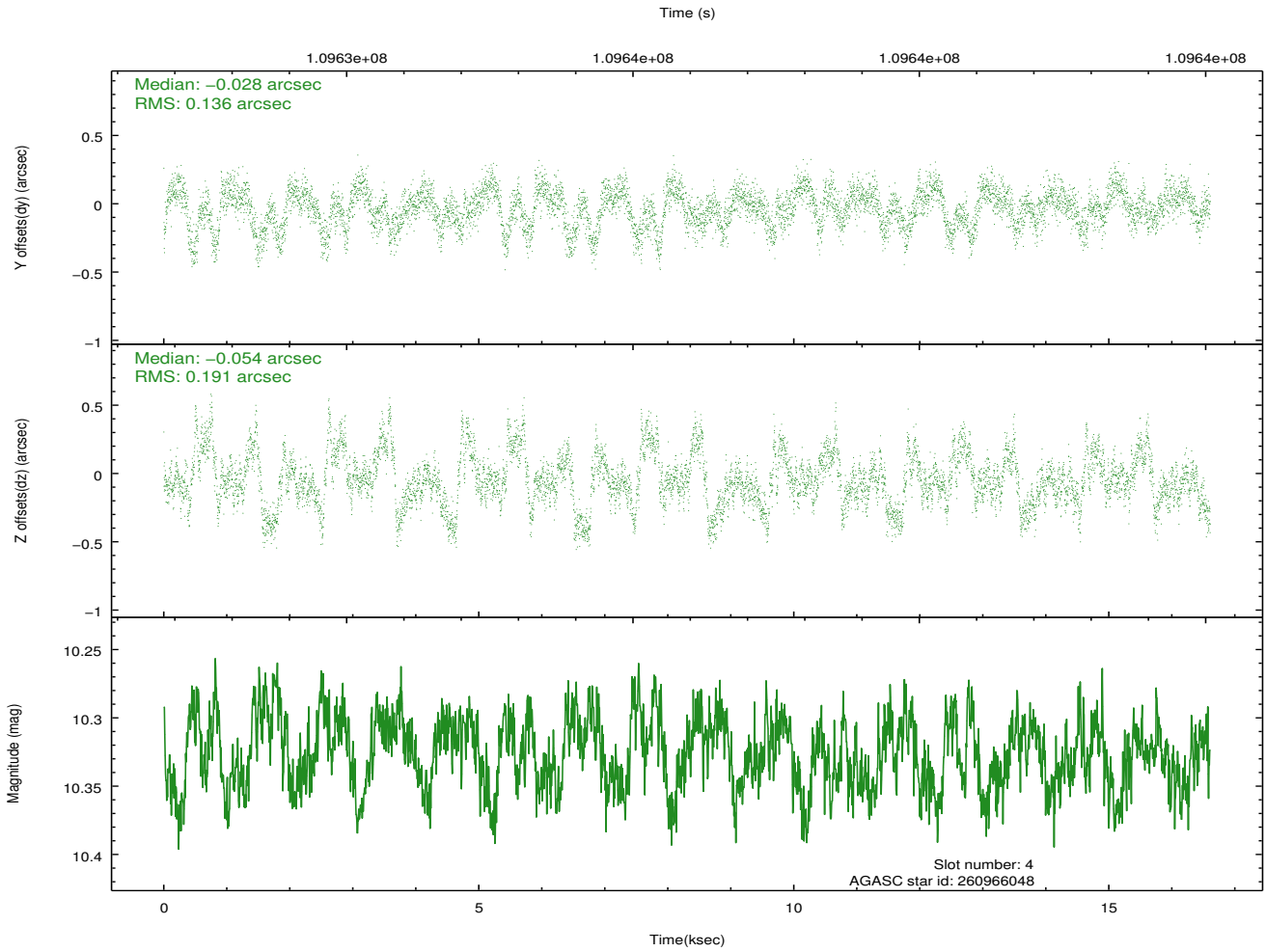
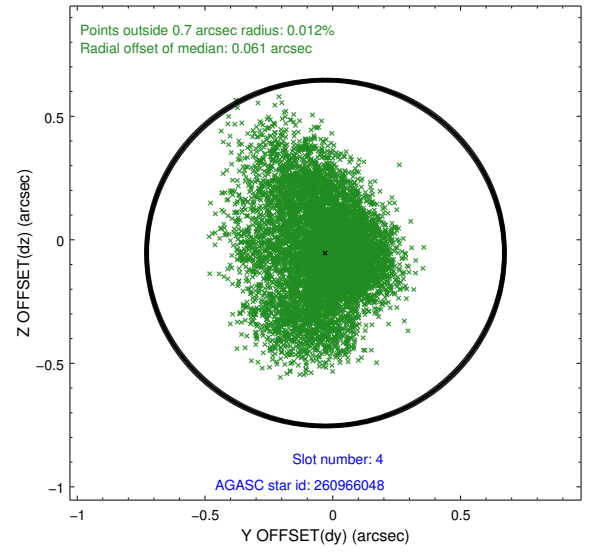
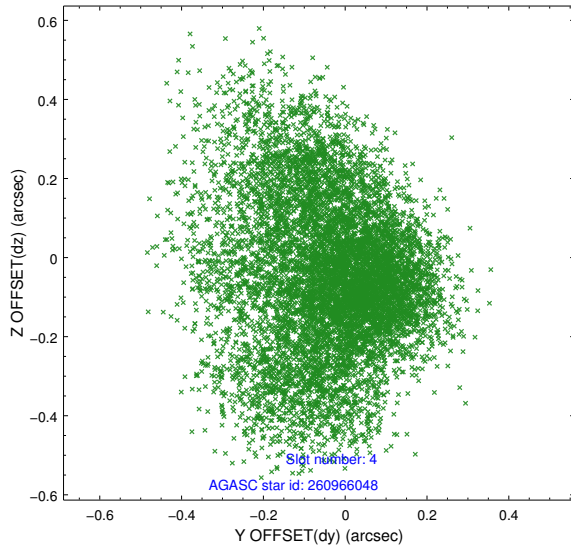
slot	status	id	mag	n_pts	med_dy	med_dz	dr1	dr2	ra	dec	mean_y	mean_z
0	FID	ACIS-S-2	7.12	4050	-0.010	-0.005	0.006	0.010	0.000000	0.000000	-755.24	-1728.44
1	FID	ACIS-S-4	7.20	4050	-0.052	0.006	0.006	0.011	0.000000	0.000000	2157.87	179.80
2	FID	ACIS-S-5	7.24	4050	0.031	0.007	0.007	0.011	0.000000	0.000000	-1807.71	173.76
3	GUIDE	331352904	10.89	7836	0.173	-0.112	0.346	0.576	184.922261	30.006180	186.72	-2193.63
4	GUIDE	260966048	10.33	8085	-0.028	-0.054	0.249	0.412	185.169624	29.533581	1659.80	-1044.73
5	GUIDE	331355312	7.77	8100	-0.327	-0.222	0.096	0.154	184.992302	30.486549	-1546.37	-2385.27
6	GUIDE	260964592	9.76	8095	-0.125	0.112	0.124	0.207	186.307418	29.951441	-653.30	2047.74
7	GUIDE	260965688	10.24	7966	0.321	0.278	0.155	0.276	186.109030	29.135383	2348.13	2161.47

2.4 Star Slots

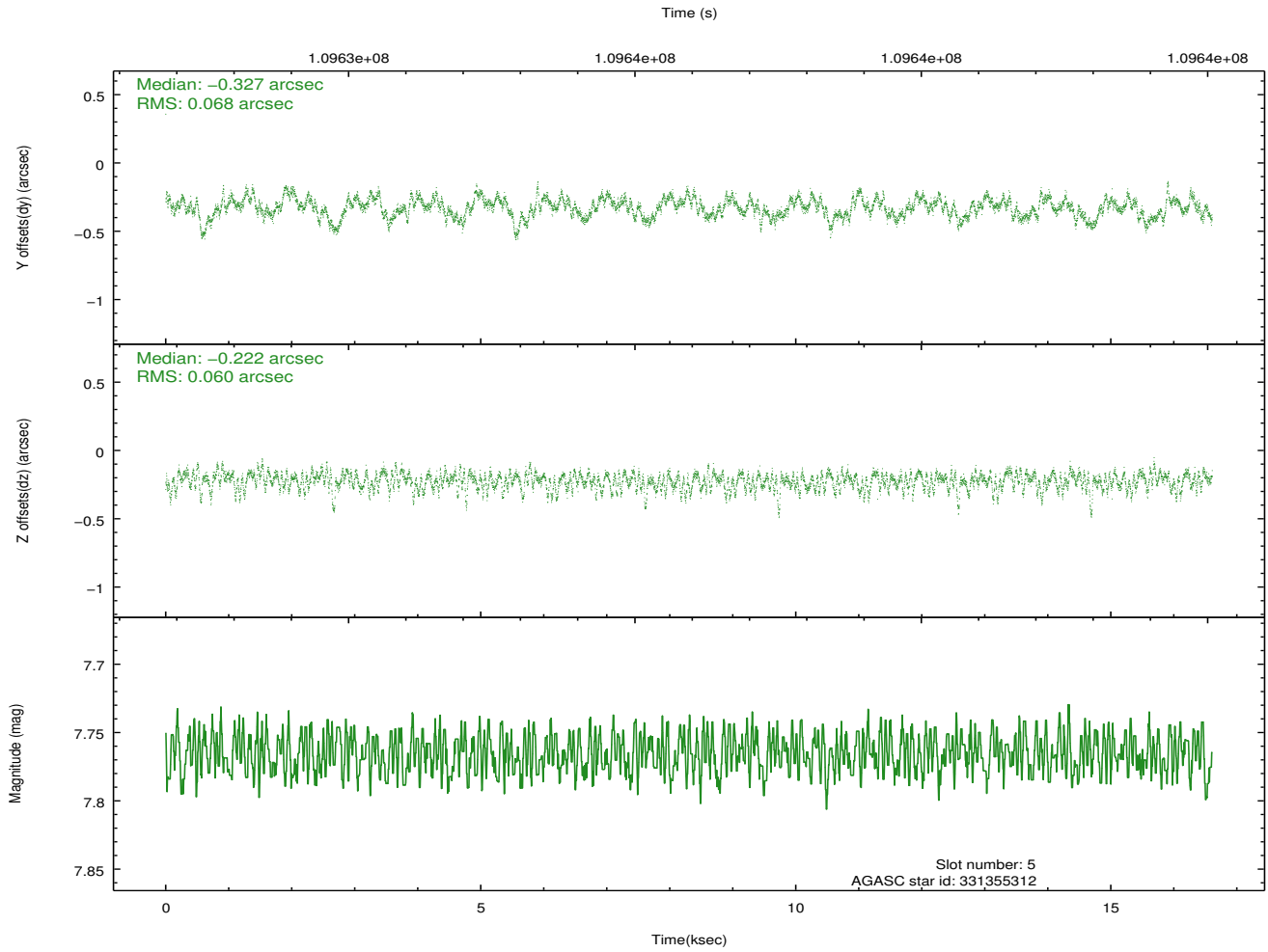
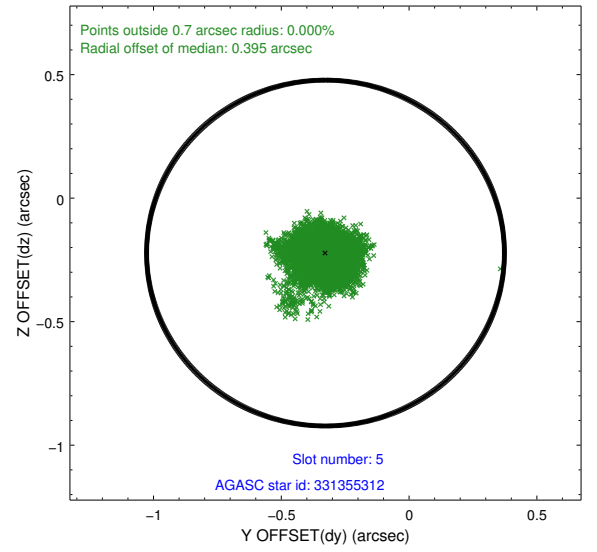
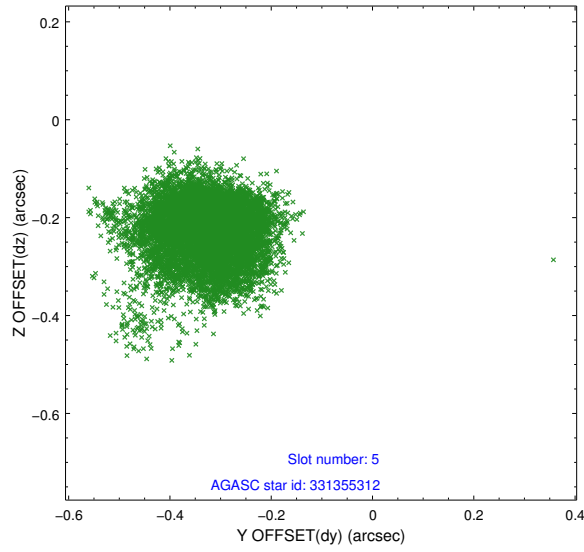
2.4.1 Slot 3



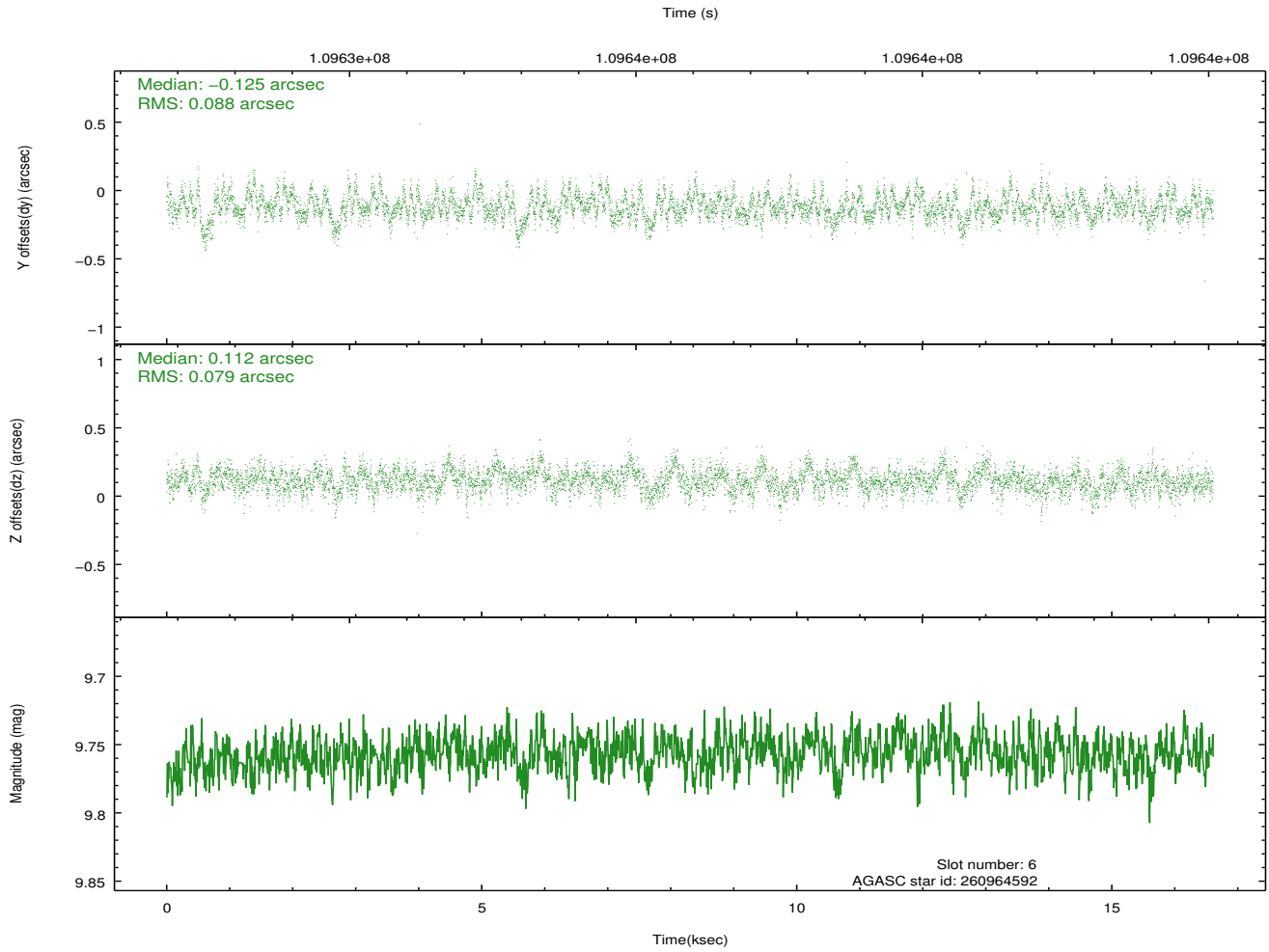
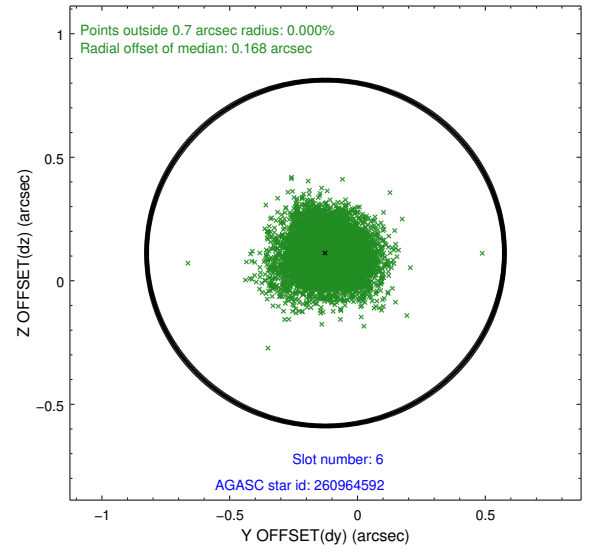
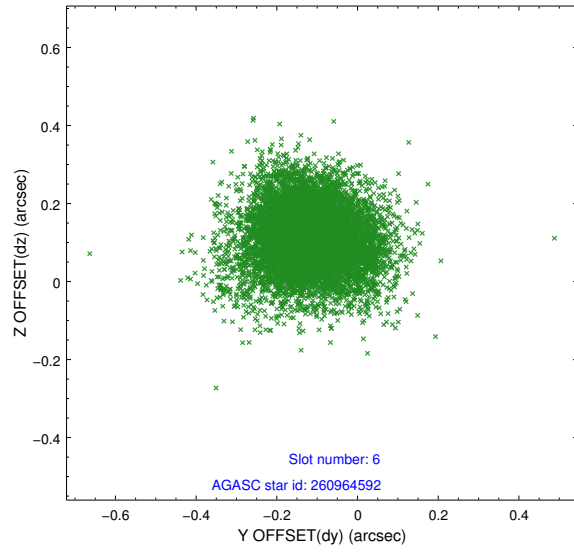
2.4.2 Slot 4



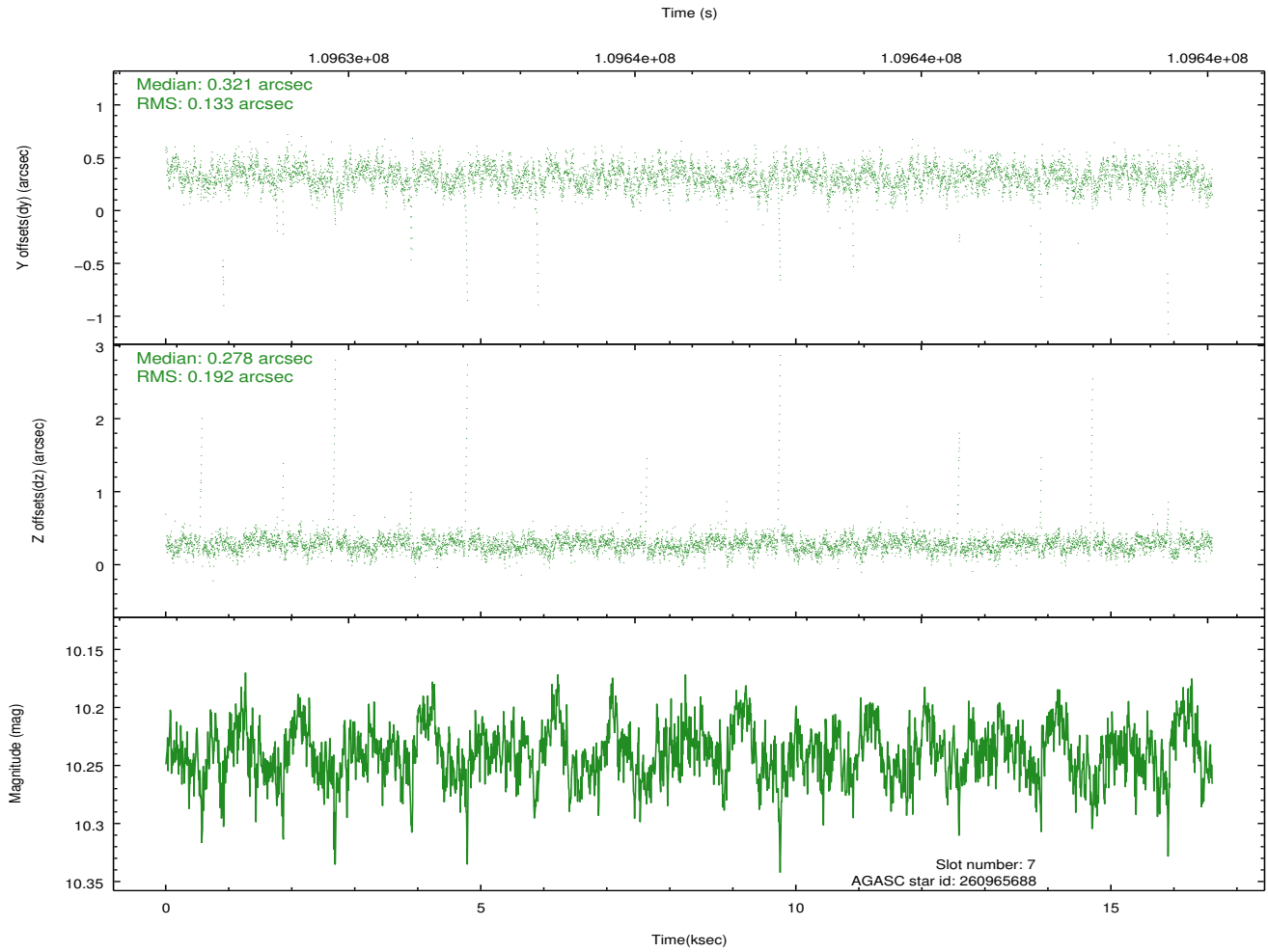
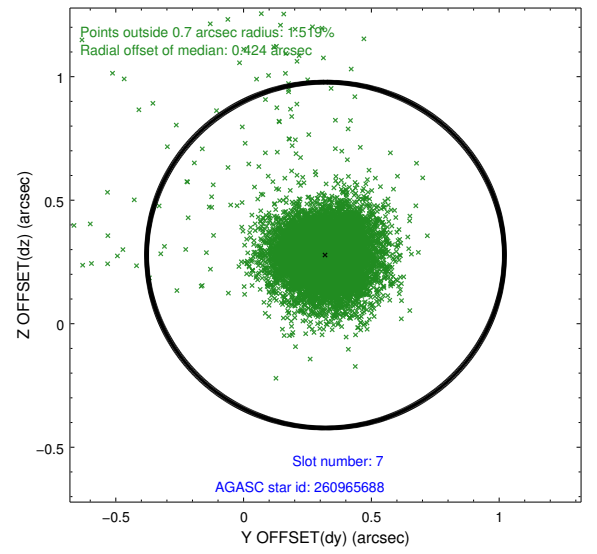
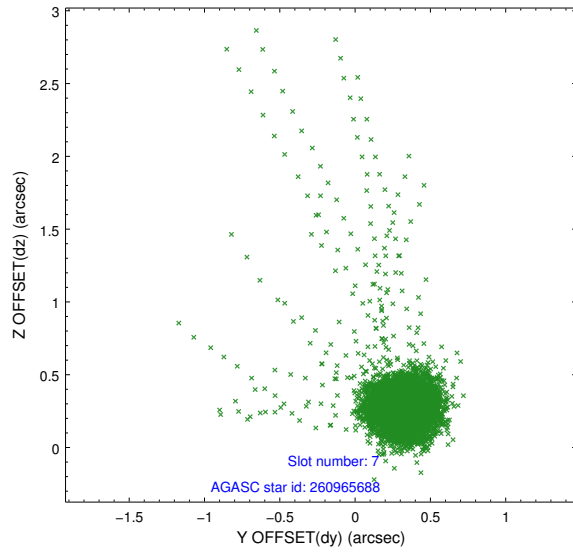
2.4.3 Slot 5



2.4.4 Slot 6

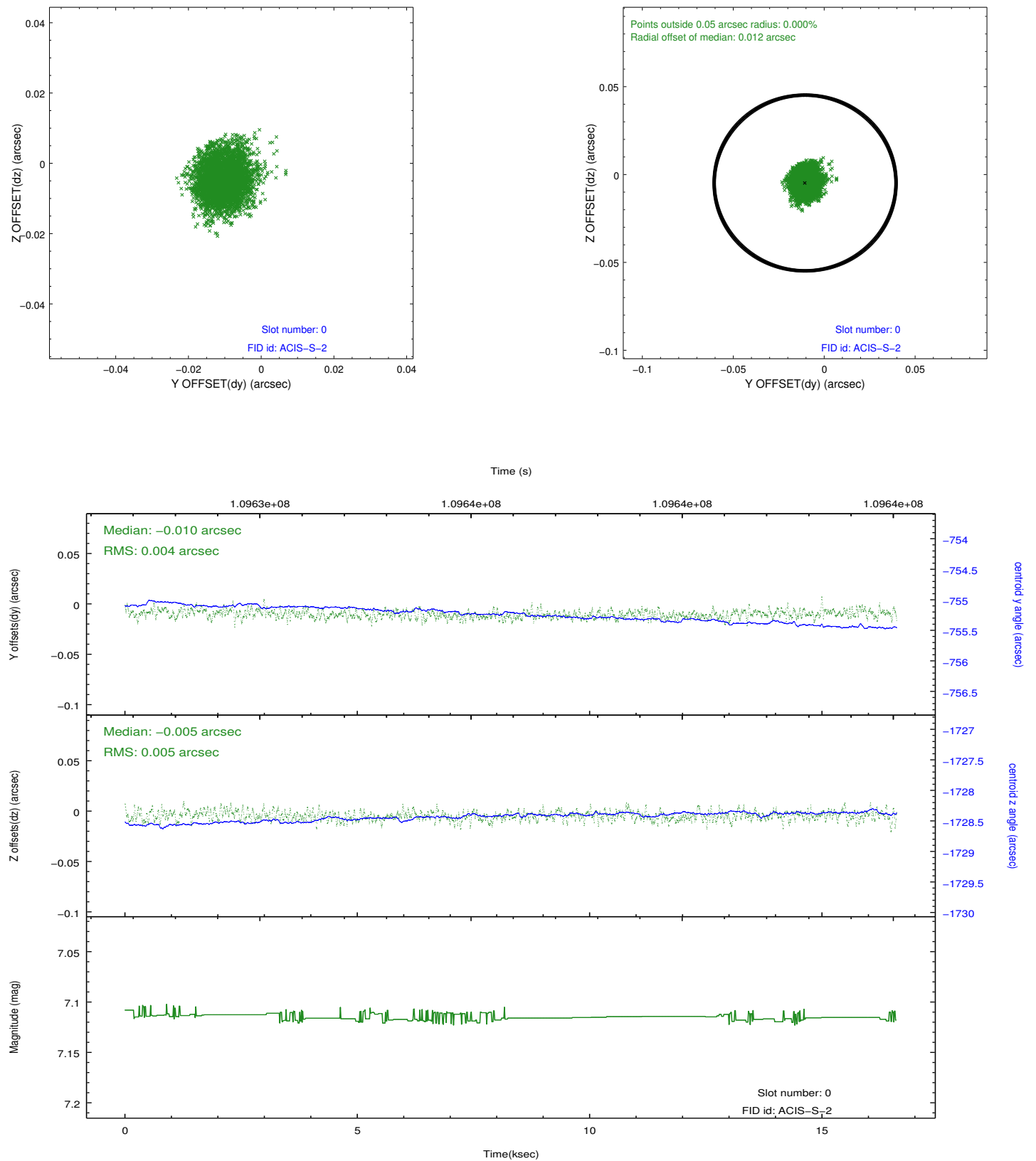


2.4.5 Slot 7

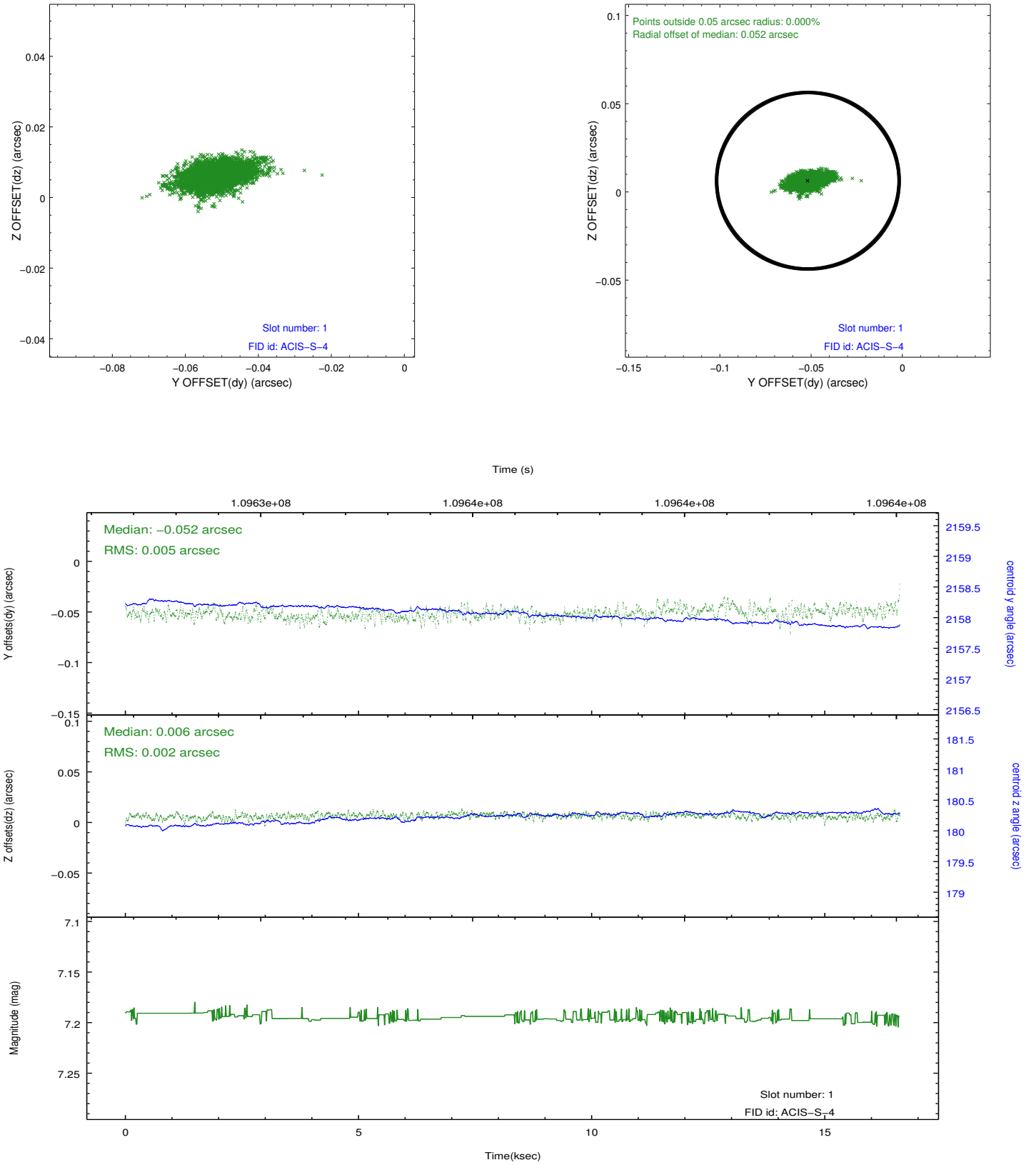


2.5 FID Slots

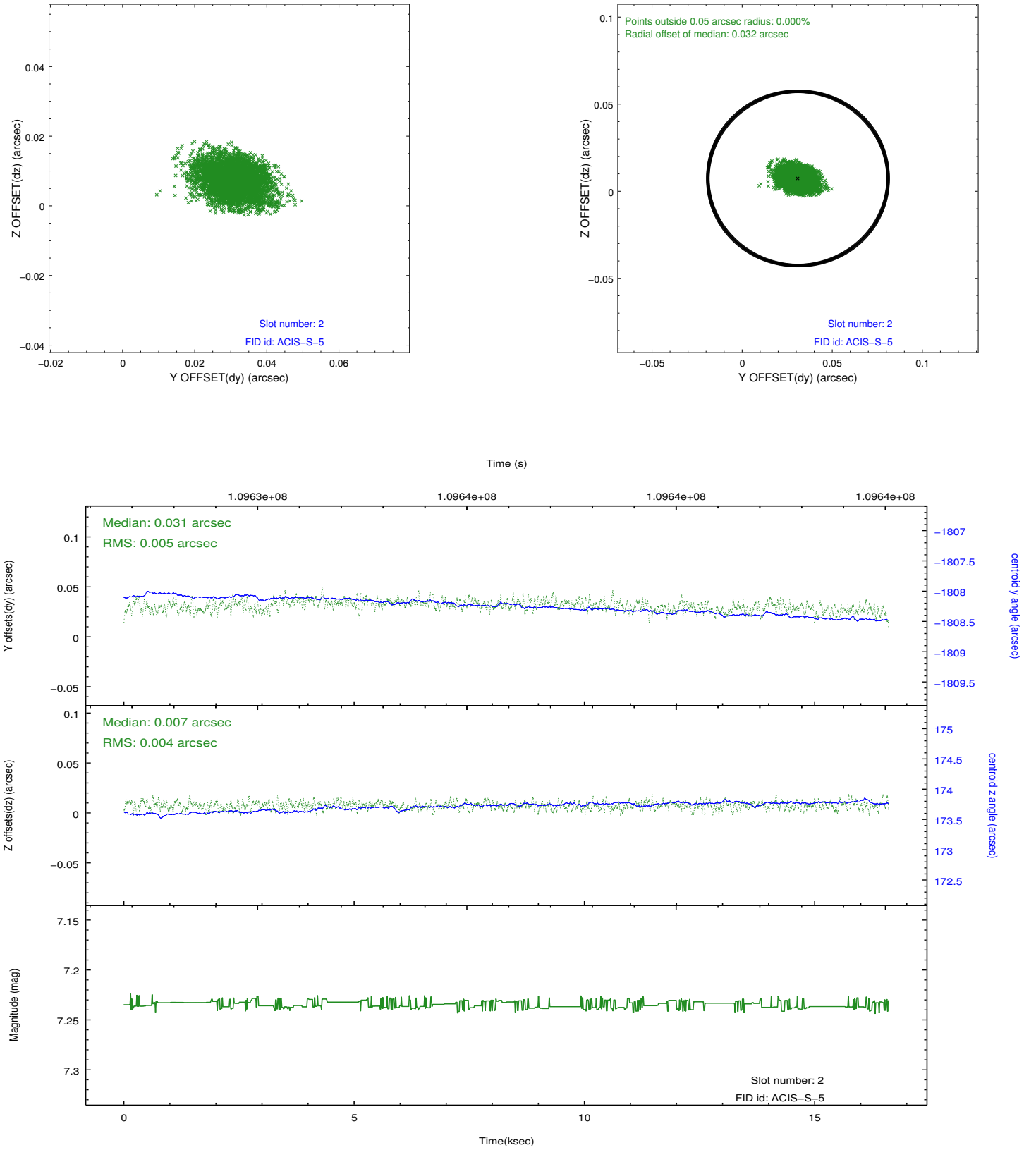
2.5.1 Slot 0



2.5.2 Slot 1



2.5.3 Slot 2



A Summary

A.1 Status

V&V Scientist	Jen Lauer
V&V Date (YYYY-MM-DD)	2012.09.21
V&V Edition	1
V&V Disposition and Status	OK
V&V Charge Time	16.249

A.2 Comments

Monitor constraint met.