

# V&V Reference Report

## L2 ASCDS Version : 8.4.5

Observation 2048 - L2 Version 3  
Chandra X-Ray Center

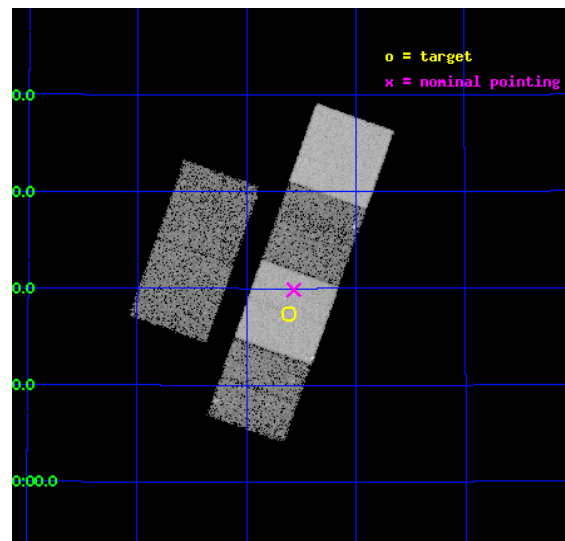
L2 Processing Date : Sep 20 2012

## Contents

<b>1</b>	<b>Front</b>	<b>2</b>
<b>2</b>	<b>OBI</b>	<b>3</b>
2.1	OBI . . . . .	3
2.1.1	Images . . . . .	3
2.1.2	Bias . . . . .	3
2.1.3	Parameters . . . . .	4
2.1.4	Events . . . . .	4
2.2	Compared Parameters . . . . .	5
2.3	Aspect . . . . .	6
2.4	Star Slots . . . . .	9
2.4.1	Slot 3 . . . . .	9
2.4.2	Slot 4 . . . . .	10
2.4.3	Slot 5 . . . . .	11
2.4.4	Slot 6 . . . . .	12
2.4.5	Slot 7 . . . . .	13
2.5	FID Slots . . . . .	14
2.5.1	Slot 0 . . . . .	14
2.5.2	Slot 1 . . . . .	15
2.5.3	Slot 2 . . . . .	16
<b>A</b>	<b>Summary</b>	<b>17</b>
A.1	Status . . . . .	17
A.2	Comments . . . . .	17

# 1 Front

seq_num	600182	Sequence number
obs_id	2048	Observation id
title	2001: A SPACE CENSUS -- SUPERSOFT X-RAY SOURCES AND OTHER X-RAY SOURCES IN M31	Proposal title
observer	Dr. R. Di Stefano	Principal investigator
object	M31_1	Source name
dtcycle	0	&#160
cycle	P	events from which exps? Prim/Second/Both
ra_targ	9.652083	Observer's specified target RA [deg]
dec_targ	40.288889	Observer's specified target Dec [deg]
ra_nom	9.6419045815343	Nominal RA [deg]
dec_nom	40.331152033841	Nominal Dec [deg]
roll_nom	109.58411798112	Nominal Roll [deg]
revision	3	Processing version of data
ontime	13948.800012976	Sum of GTIs [s]
livetime	13772.171908253	Livetime [s]
ontime2	13948.800012976	Sum of GTIs [s]
ontime3	13948.800012976	Sum of GTIs [s]
ontime5	13948.800012976	Sum of GTIs [s]
ontime6	13948.800012976	Sum of GTIs [s]
ontime7	13948.800012976	Sum of GTIs [s]
ontime8	13948.800012976	Sum of GTIs [s]
l2events	136457	Number of level 2 events

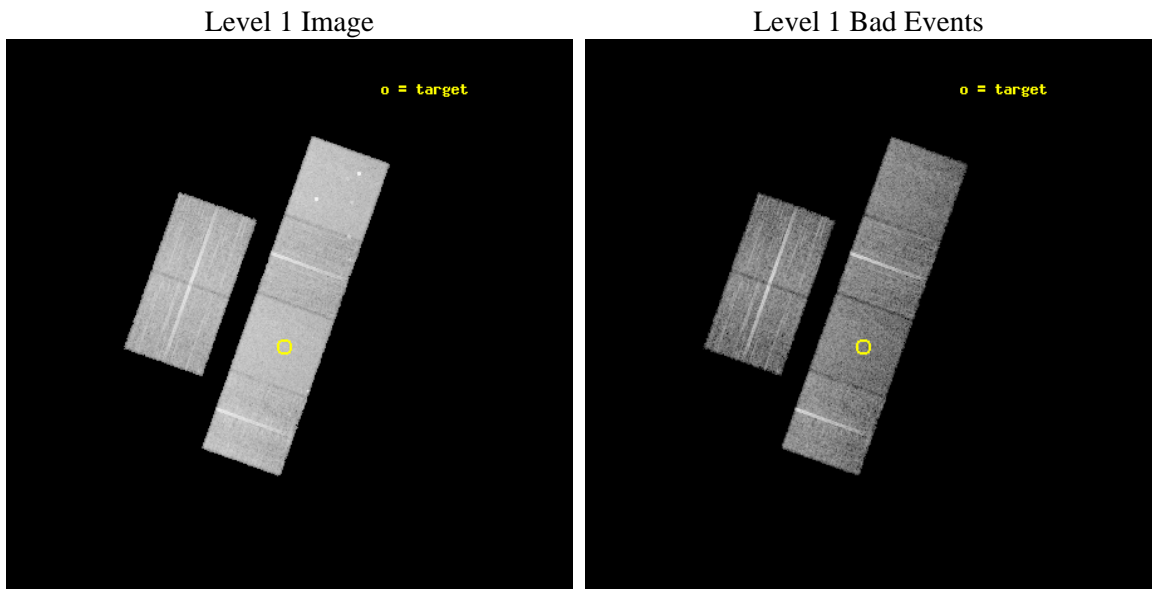




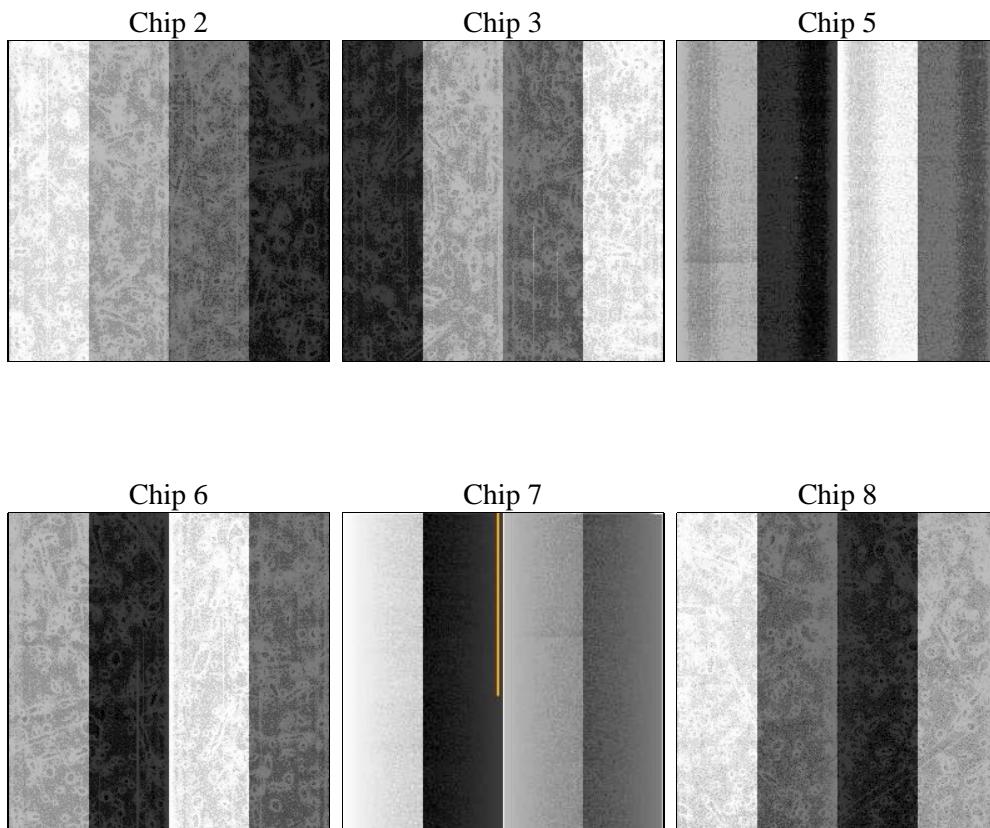
## 2 OBI

### 2.1 OBI

#### 2.1.1 Images



#### 2.1.2 Bias



### 2.1.3 Parameters

obi_num	0	Obi number	sched_exp_time	14000.000000	[s] Scheduled observation exposure time
ascdsver	8.4.5	Processing system revision	ontime	13948.800012976	Sum of GTIs [s]
caldsver	4.5.1.1	&#160	ontime2	13948.800012976	Sum of GTIs [s]
date	2012-09-20T13:15:48	Date and time of file creation	ontime3	13948.800012976	Sum of GTIs [s]
revision	3	Processing version of data	ontime5	13948.800012976	Sum of GTIs [s]
			ontime6	13948.800012976	Sum of GTIs [s]
			ontime7	13948.800012976	Sum of GTIs [s]
			ontime8	13948.800012976	Sum of GTIs [s]
			l1events	628921	Number of level 1 events

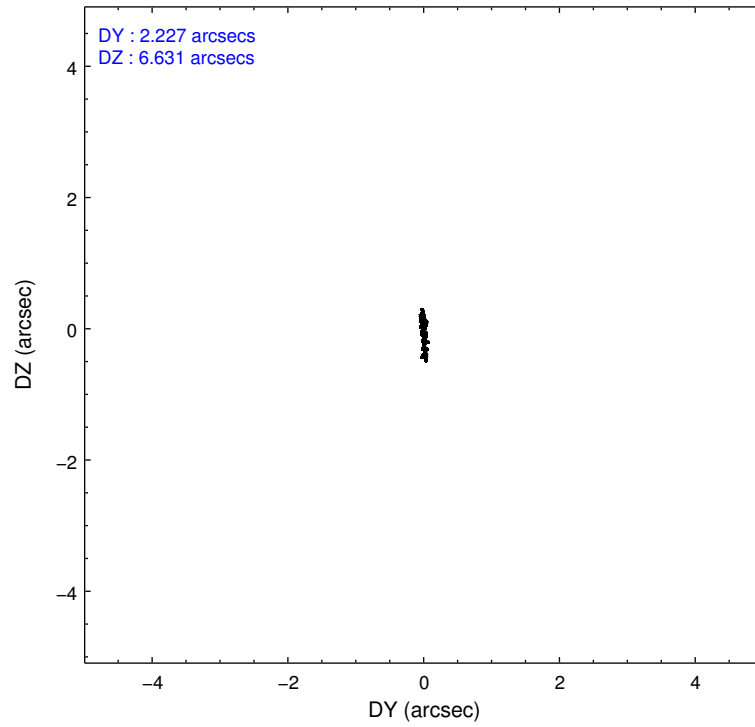
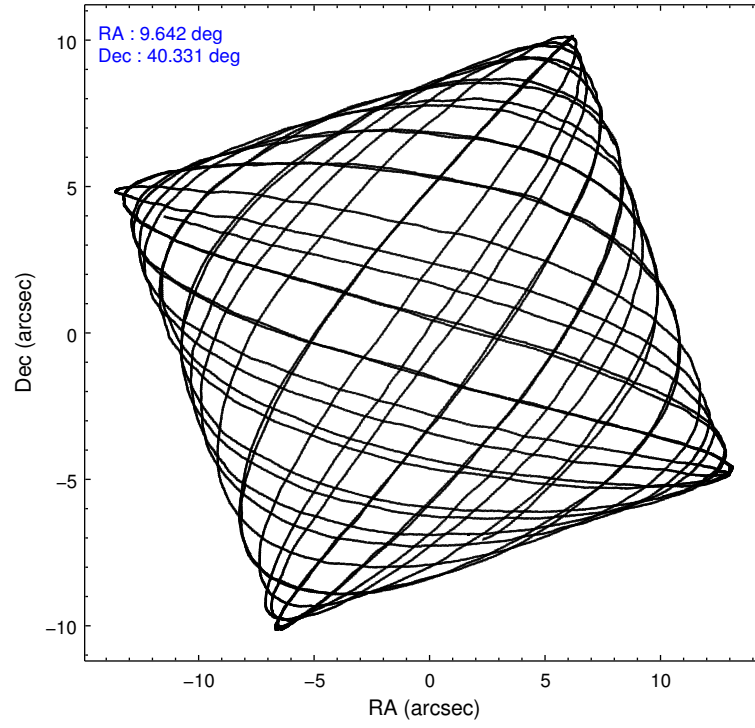
### 2.1.4 Events

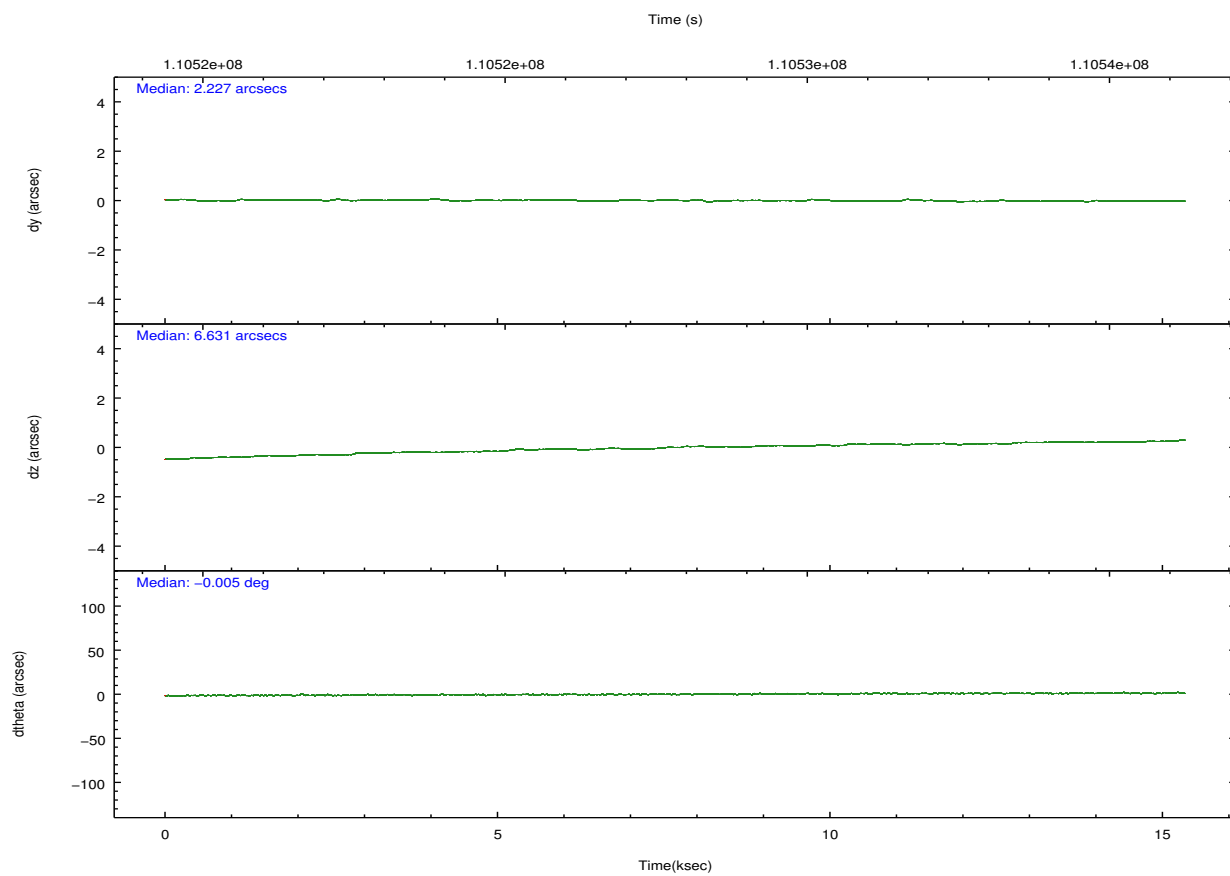
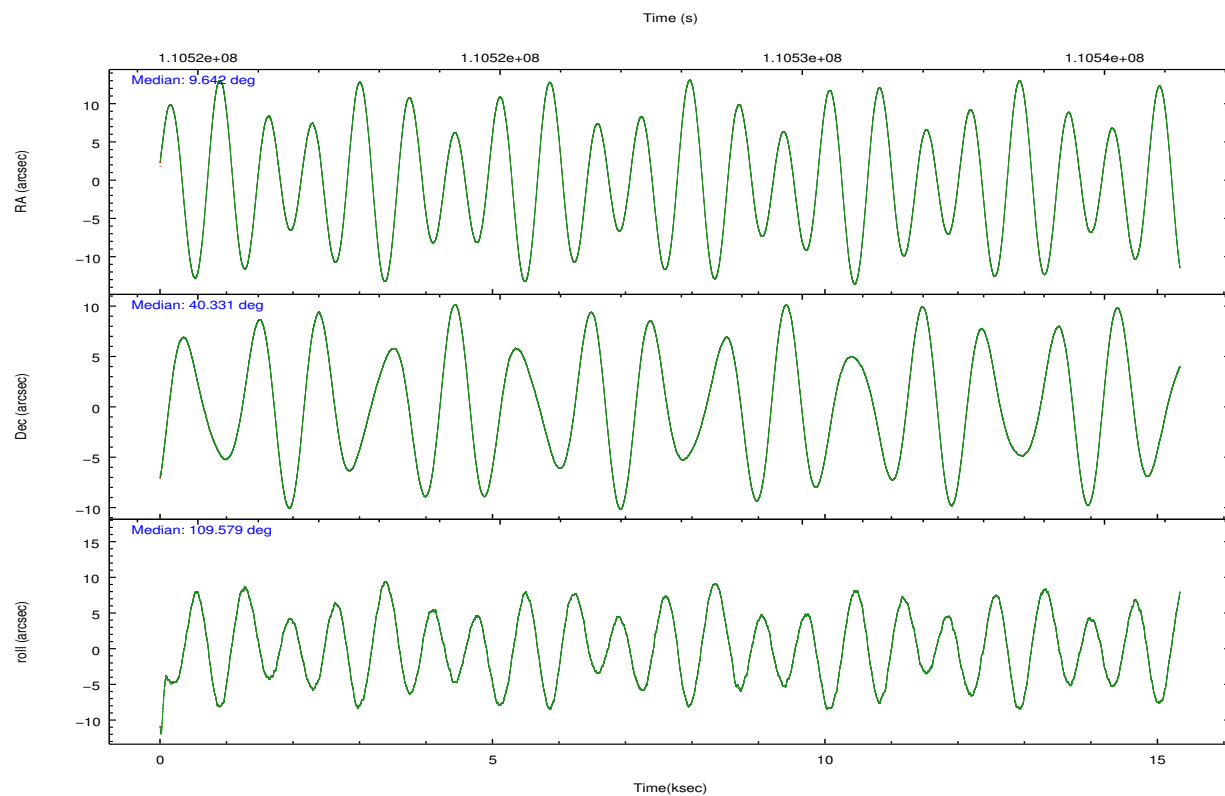
	ccd 2	ccd 3	ccd 5	ccd 6	ccd 7	ccd 8		ccd 2	ccd 3	ccd 5	ccd 6	ccd 7	ccd 8
level 1 events	94862	88721	127113	91142	114569	112514	grade 0 events	4131	4132	6648	4089	4481	7087
rejected events	84801	78825	68882	80958	67128	90285		4%	4%	5%	4%	3%	6%
rejected %	89%	88%	54%	88%	58%	80%	grade 1 events	46	63	255	39	110	56
								0%	0%	0%	0%	0%	0%
							grade 2 events	2210	2024	16560	2089	9259	4882
								2%	2%	13%	2%	8%	4%
							grade 3 events	953	936	2541	1015	4243	2476
								1%	1%	1%	1%	3%	2%
							grade 4 events	988	996	2518	987	4302	2167
								1%	1%	1%	1%	3%	1%
							grade 5 events	3290	3505	9678	3839	10910	4783
								3%	3%	7%	4%	9%	4%
							grade 6 events	1781	1813	29986	2009	25171	5621
								1%	2%	23%	2%	21%	4%
							grade 7 events	81463	75252	58927	77075	56093	85442
								85%	84%	46%	84%	48%	75%

## 2.2 Compared Parameters

Parameter	Planned	Actual	Parameter	Planned	Actual
Instrument	ACIS	ACIS	Obspar format version number	7	7
Detector	ACIS-235678	ACIS-235678	Obspar file type	PREDICTED	ACTUAL
Grating	NONE	NONE	Obspar update status	NONE	UPDATED
Data mode	FAINT	FAINT	Number of optional ACIS chips dropped	0	0
Observation mode	POINTING	POINTING	On-chip summing requested	N	N
[deg] Pointing RA	9.669353	9.641904581534272	Subarray requested	NONE	NONE
[deg] Pointing Dec	40.313673	40.3311520338405	Alternating exposures requested	N	N
[deg] Pointing Roll	109.409730	109.5841179811186	[s] Primary exposure time	0.000000	3.2
[mm] SIM focus pos	-0.684267	-0.6828225247311905			
[mm] SIM defocus	0	0.001444936568705701			
[mm] SIM translation stage pos	-190.132523	-190.145094680475			
[mm] SIM translation stage offset	0	0.01257209746719923			
[s] Observation start time (MET)	110521483.184000	110519952.90148			
Observation start date	2001-07-03T04:23:39	2001-07-03T03:59:12			
[s] Observation end time (MET)	110535483.184000	110535620.02709			
Observation end date	2001-07-03T08:16:59	2001-07-03T08:20:20			
Read mode	TIMED	TIMED			

## 2.3 Aspect



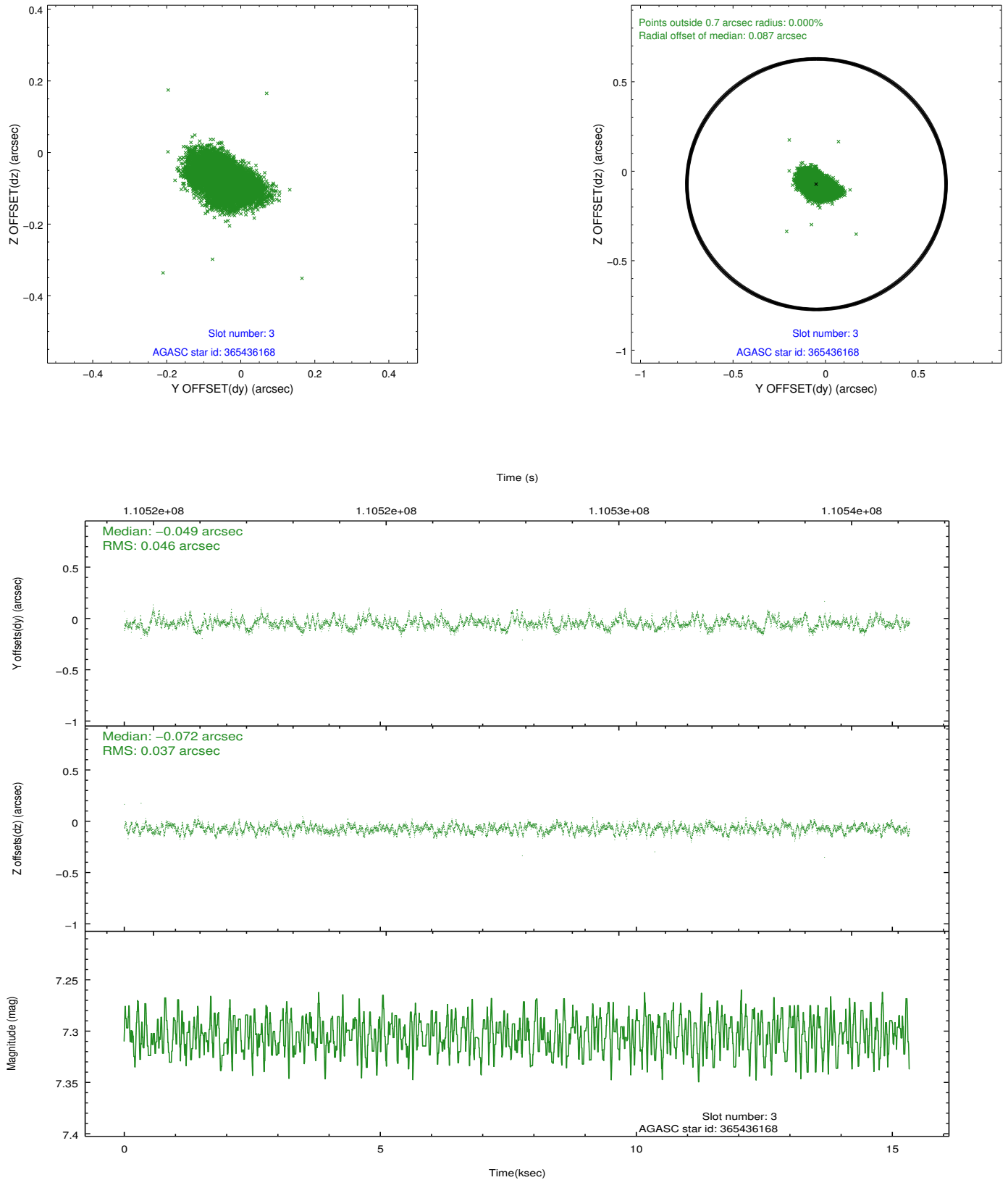


### Slot Statistics

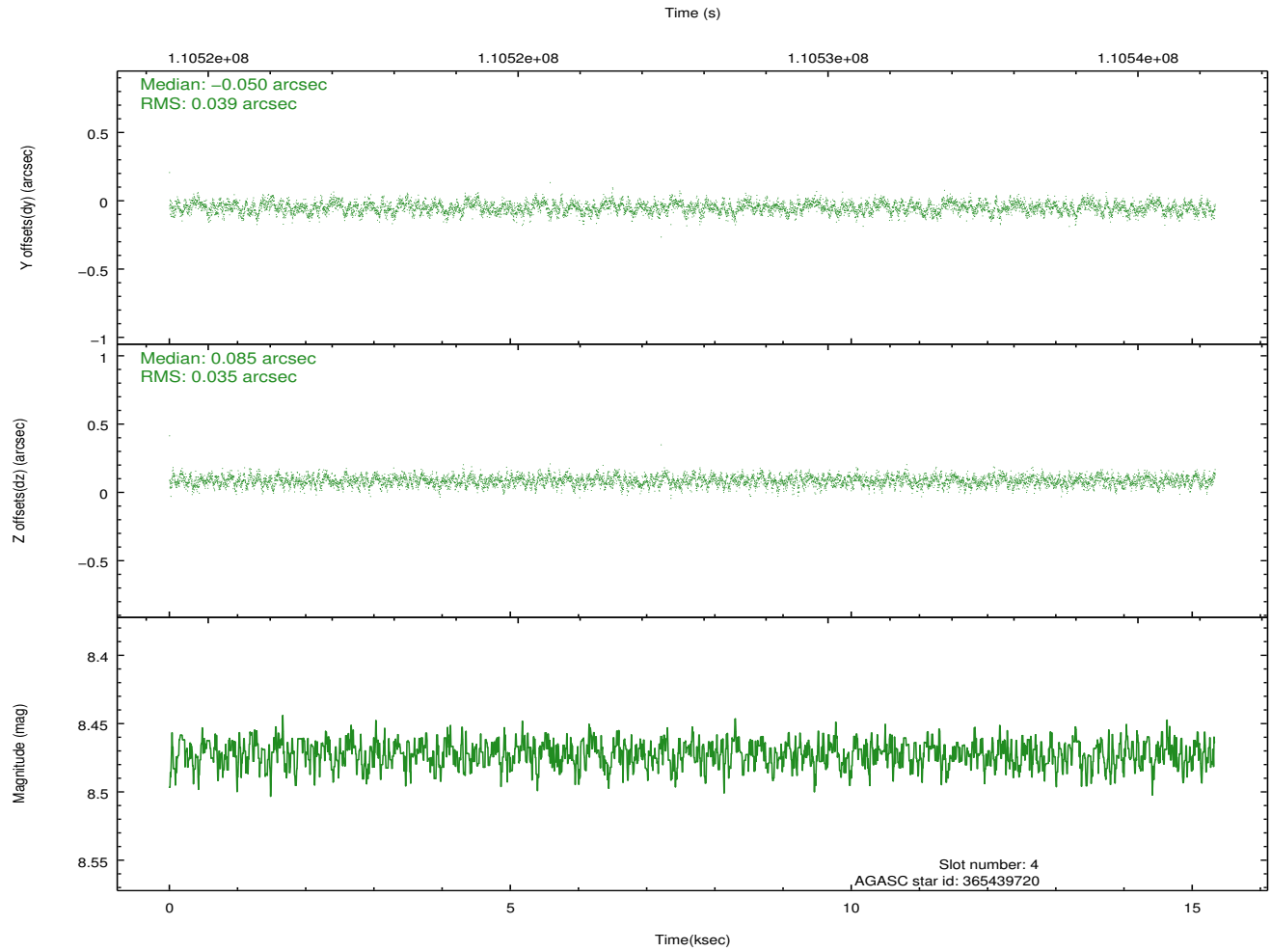
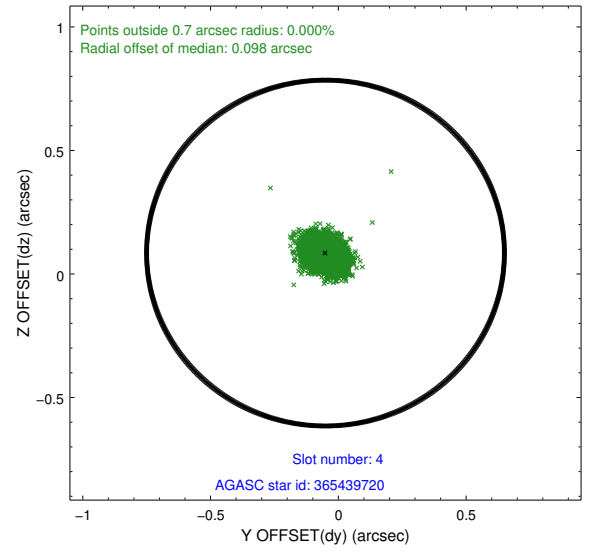
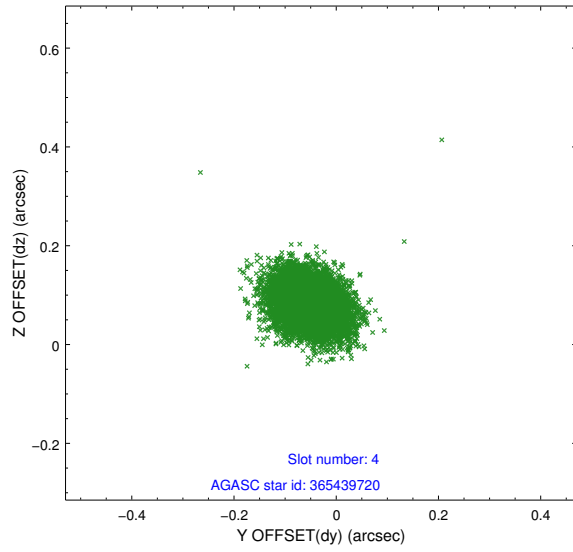
slot	status	id	mag	n_pts	med_dy	med_dz	dr1	dr2	ra	dec	mean_y	mean_z
0	FID	ACIS-S-2	7.11	3741	-0.026	0.005	0.007	0.012	0.000000	0.000000	-754.85	-1727.65
1	FID	ACIS-S-4	7.20	3741	-0.045	0.011	0.006	0.012	0.000000	0.000000	2158.25	180.58
2	FID	ACIS-S-5	7.24	3740	0.041	-0.007	0.007	0.011	0.000000	0.000000	-1807.28	174.51
3	GUIDE	365436168	7.30	7482	-0.049	-0.072	0.062	0.102	9.360006	40.332380	346.25	777.83
4	GUIDE	365439720	8.47	7480	-0.050	0.085	0.056	0.090	9.704623	40.431022	365.69	-231.27
5	GUIDE	367144424	8.66	7481	0.035	0.261	0.073	0.116	10.464515	40.309136	-732.01	-2056.43
6	GUIDE	365435256	8.89	7479	0.161	-0.130	0.074	0.119	9.519215	39.682445	-2005.43	1146.92
7	GUIDE	365438400	9.30	7477	-0.099	-0.141	0.095	0.149	8.893214	40.450373	1178.37	1838.92

## 2.4 Star Slots

### 2.4.1 Slot 3

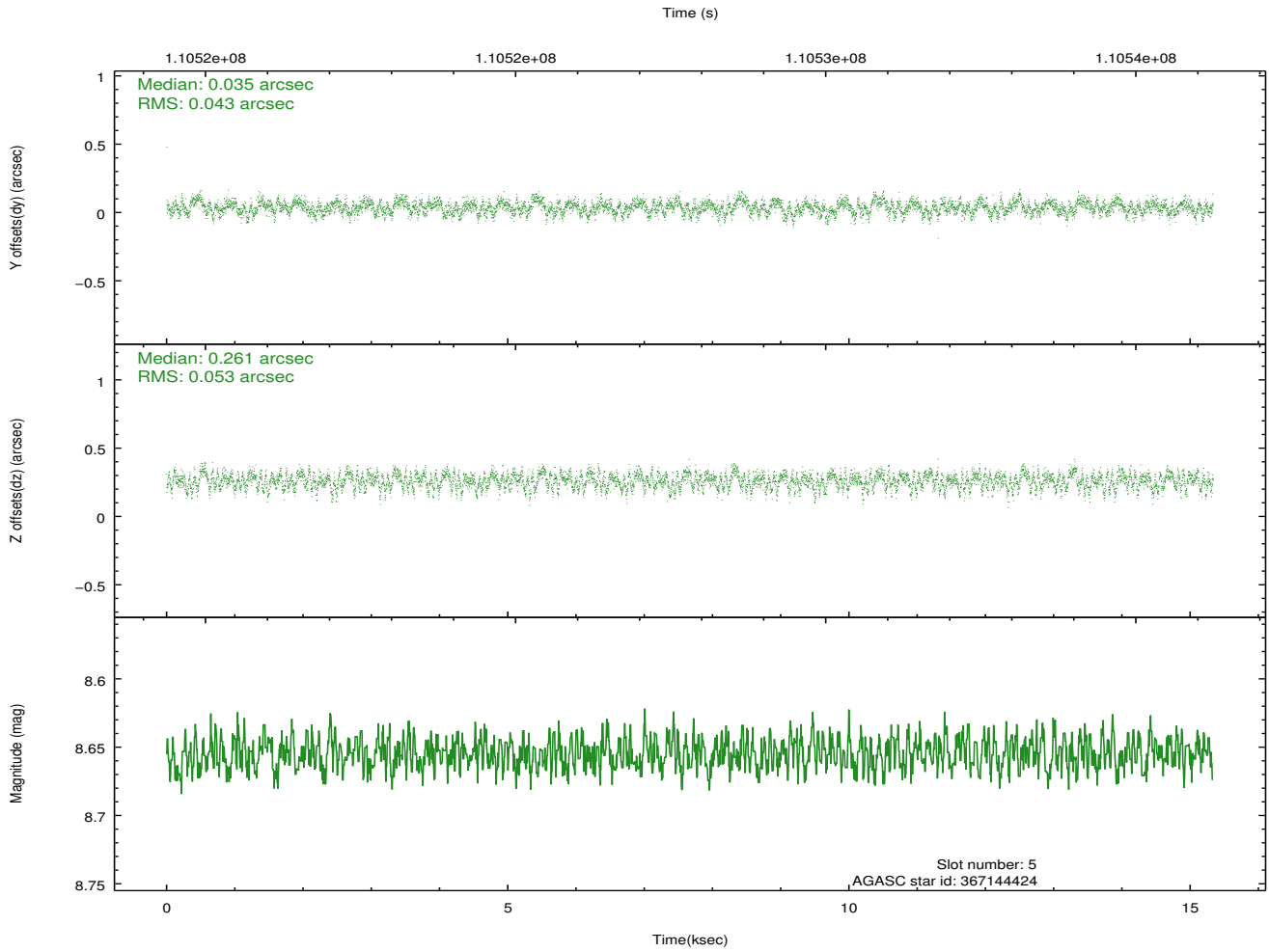
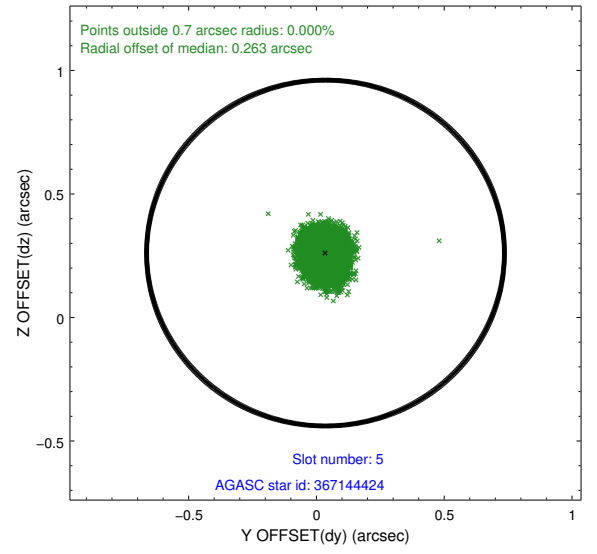
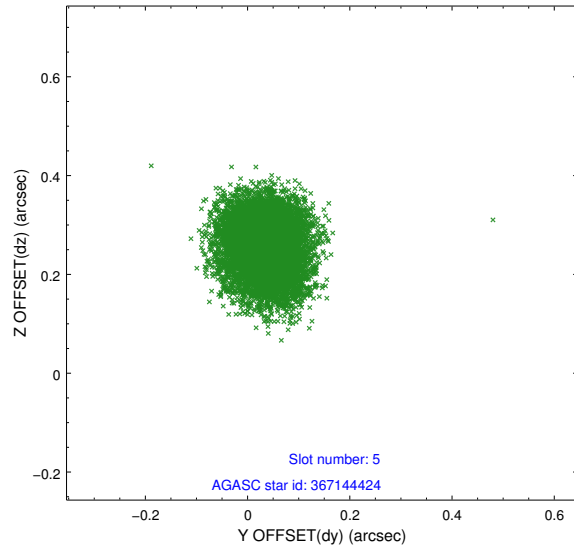


## 2.4.2 Slot 4

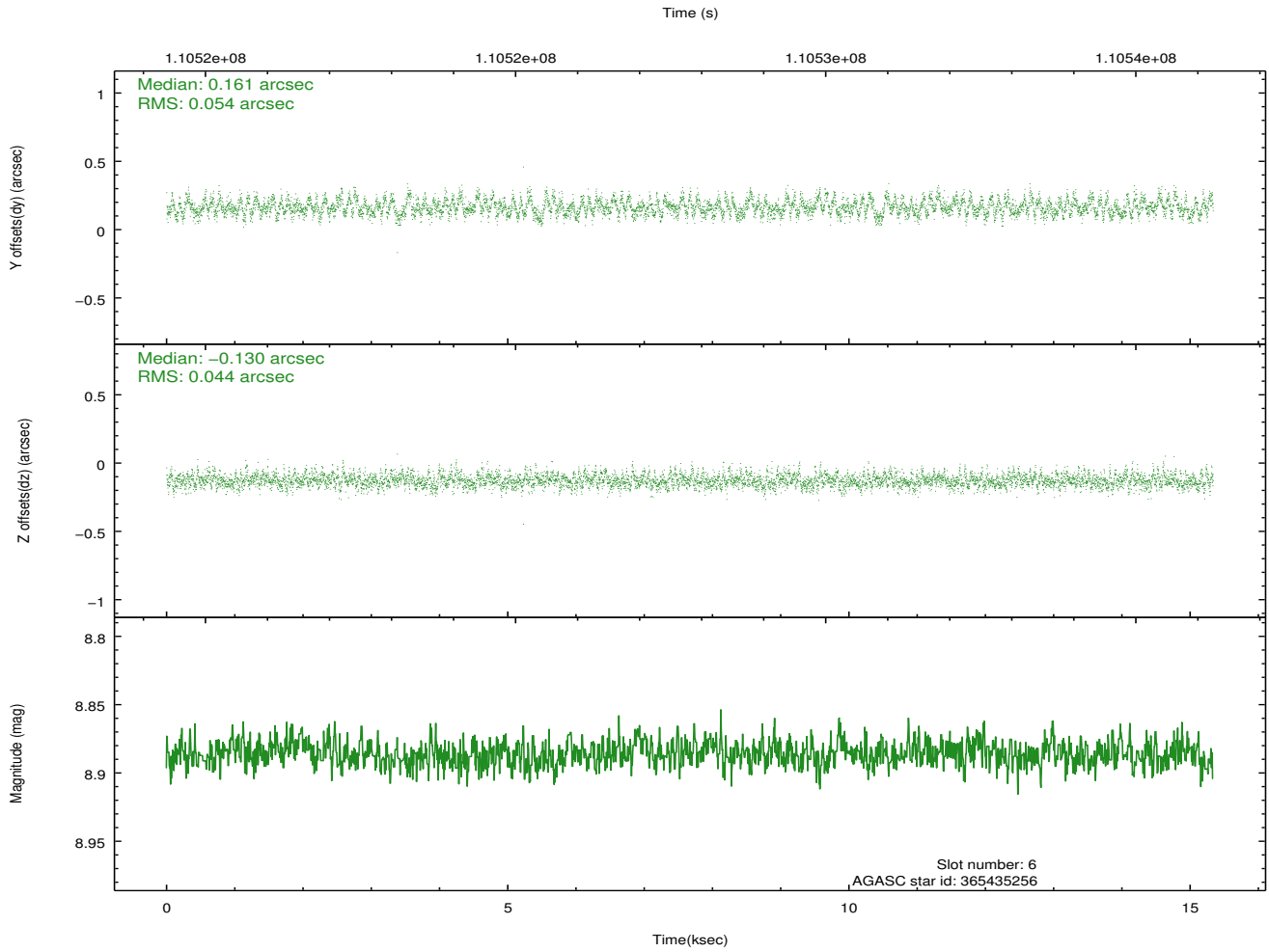
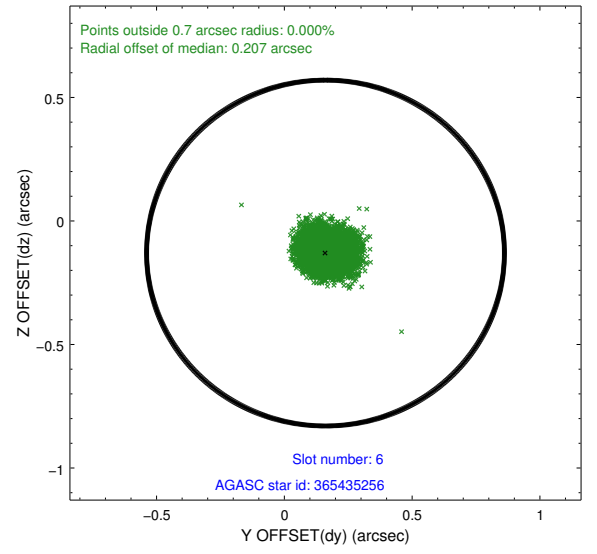
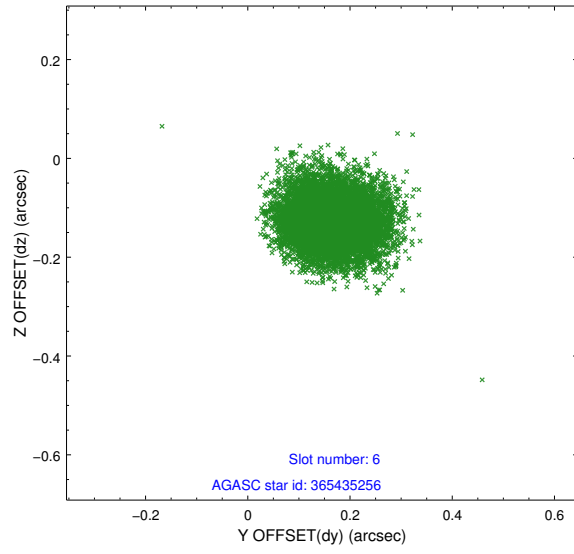




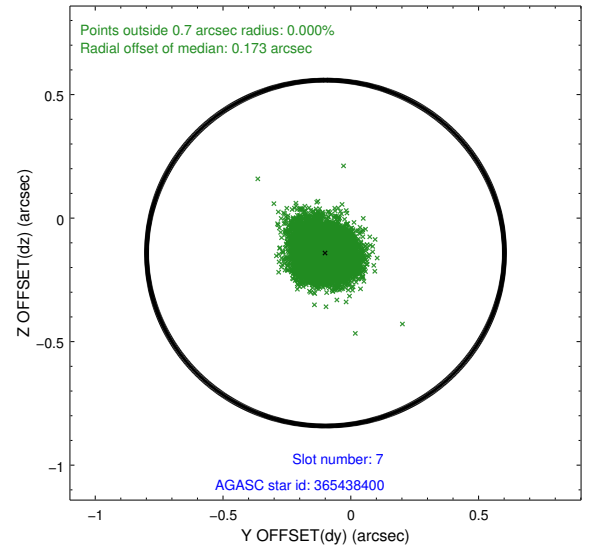
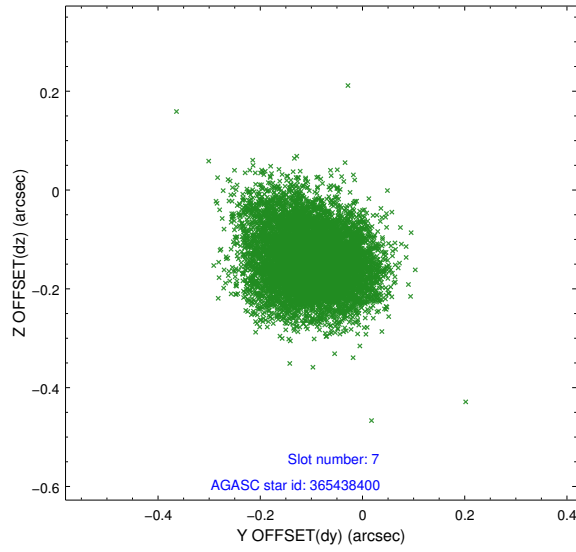
### 2.4.3 Slot 5



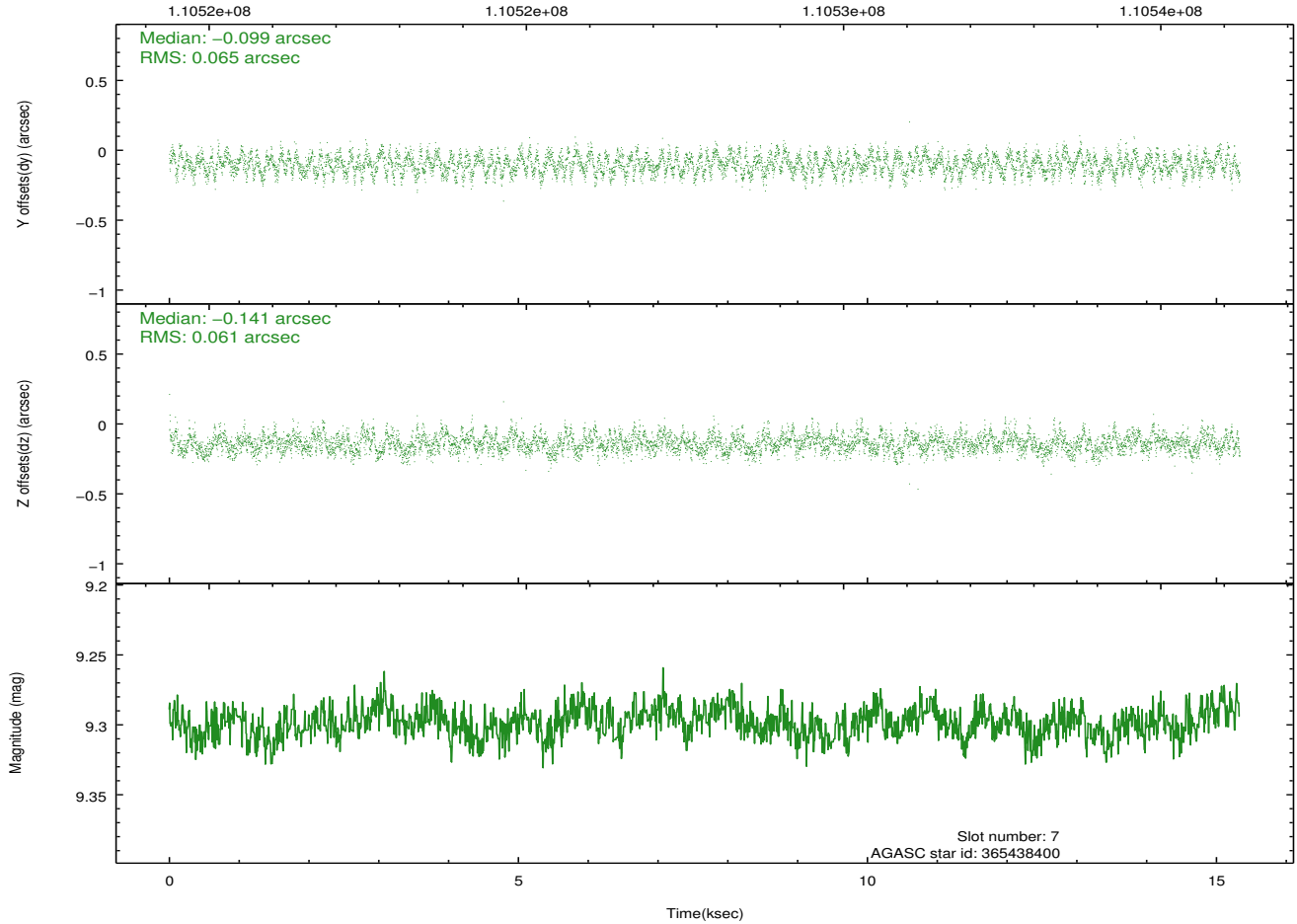
## 2.4.4 Slot 6



## 2.4.5 Slot 7

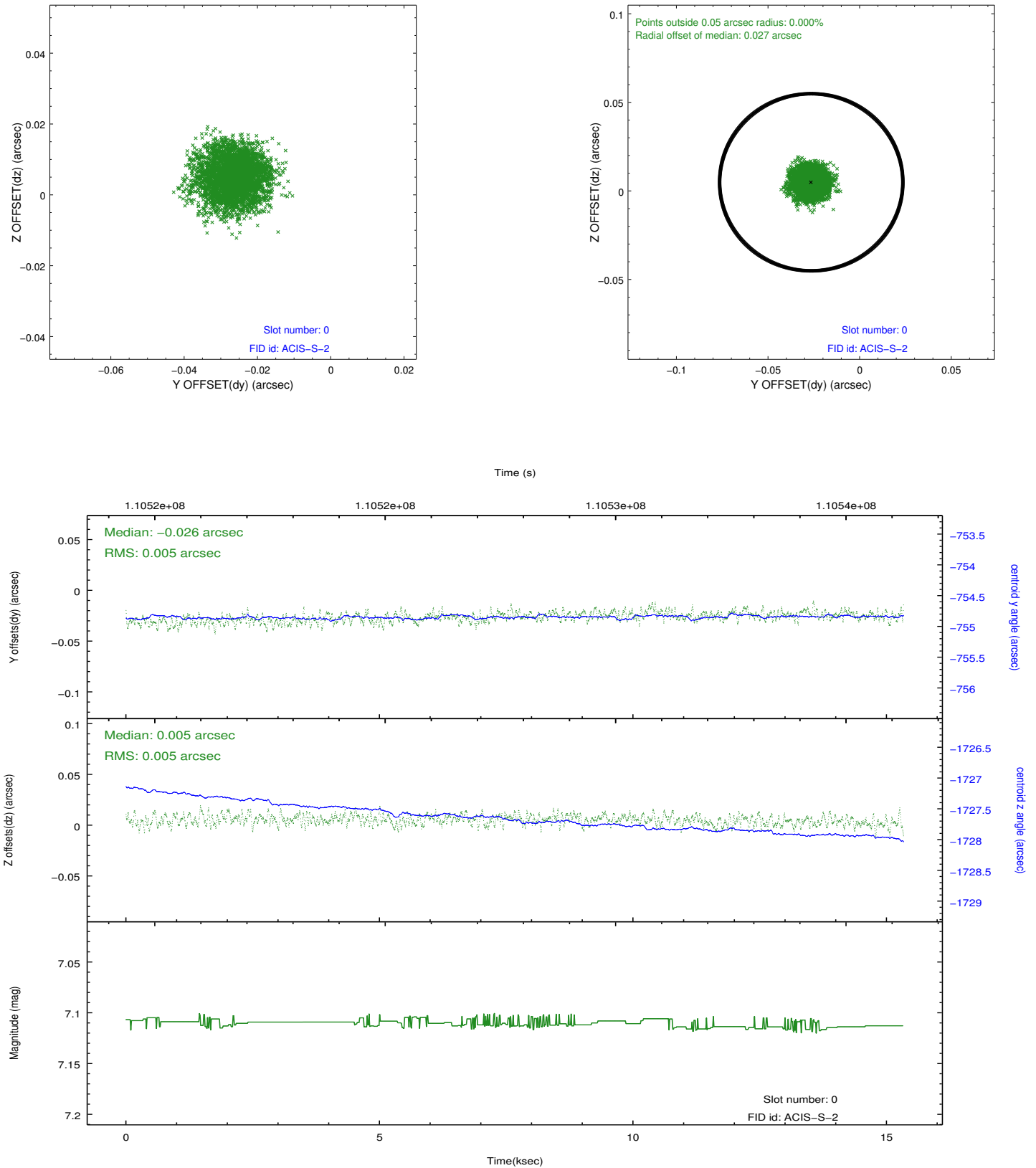


Time (s)

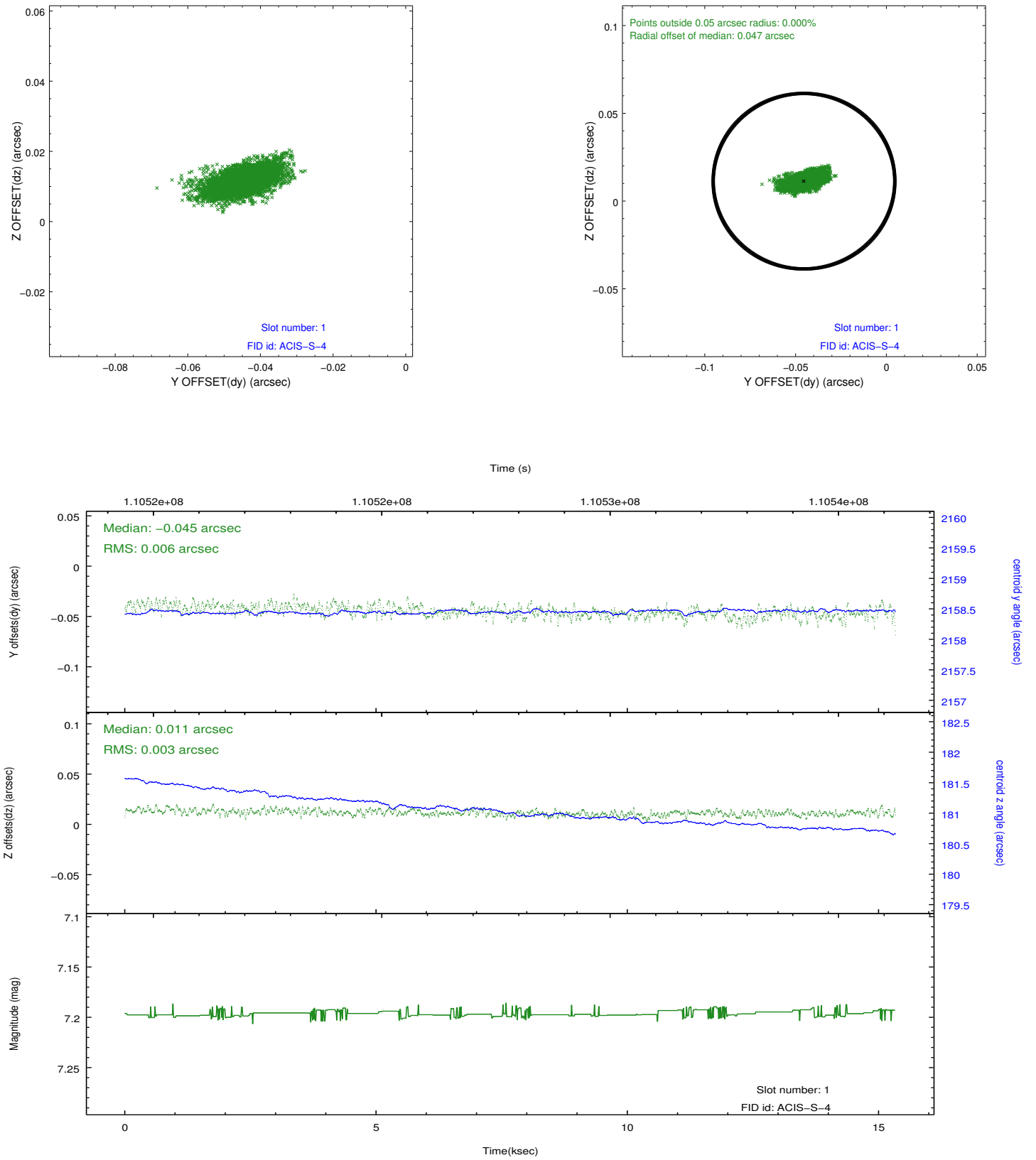


## 2.5 FID Slots

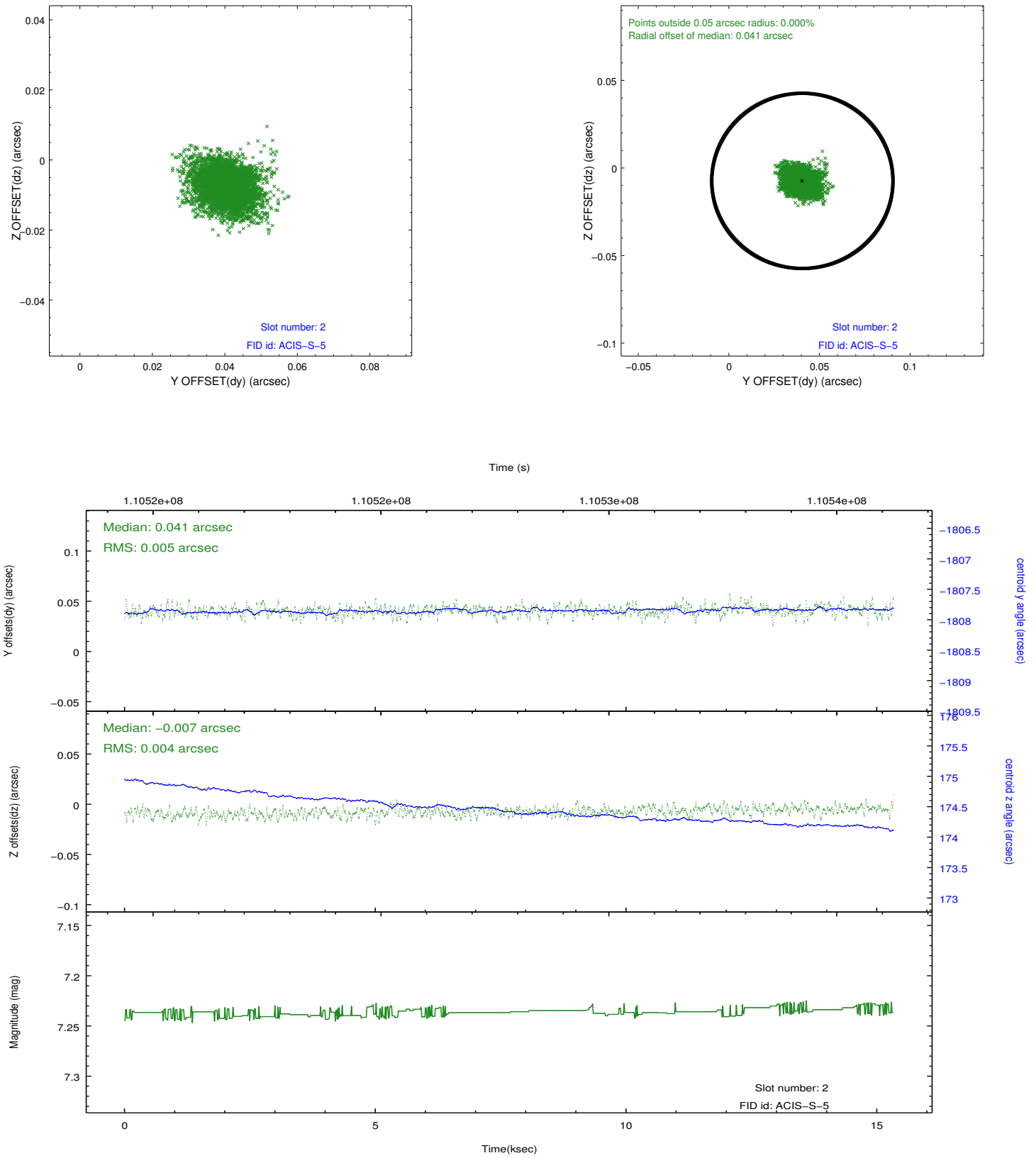
### 2.5.1 Slot 0



## 2.5.2 Slot 1



### 2.5.3 Slot 2



# A Summary

## A.1 Status

V&V Scientist	Jen Lauer
V&V Date (YYYY-MM-DD)	2012.09.24
V&V Edition	1
V&V Disposition and Status	OK
V&V Charge Time	14

## A.2 Comments

Charge time for this ObsId remains at previous value of 14 ks although with the current processing the charge time would have been 13.95 ksec. Follows obs2047 by 119 days