

V&V Reference Report

L2 ASCDS Version : 8.4.5

Observation 2045 - L2 Version 3
Chandra X-Ray Center

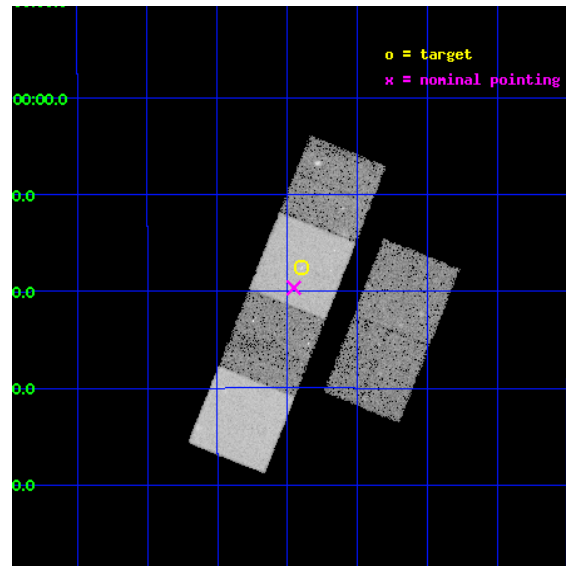
L2 Processing Date : Sep 29 2012

Contents

1	Front	2
2	OBI	3
2.1	OBI	3
2.1.1	Images	3
2.1.2	Bias	3
2.1.3	Parameters	4
2.1.4	Events	4
2.2	Compared Parameters	5
2.3	Aspect	6
2.4	Star Slots	9
2.4.1	Slot 3	9
2.4.2	Slot 4	10
2.4.3	Slot 5	11
2.4.4	Slot 6	12
2.4.5	Slot 7	13
2.5	FID Slots	14
2.5.1	Slot 0	14
2.5.2	Slot 1	15
2.5.3	Slot 2	16
A	Summary	17
A.1	Status	17
A.2	Comments	17

1 Front

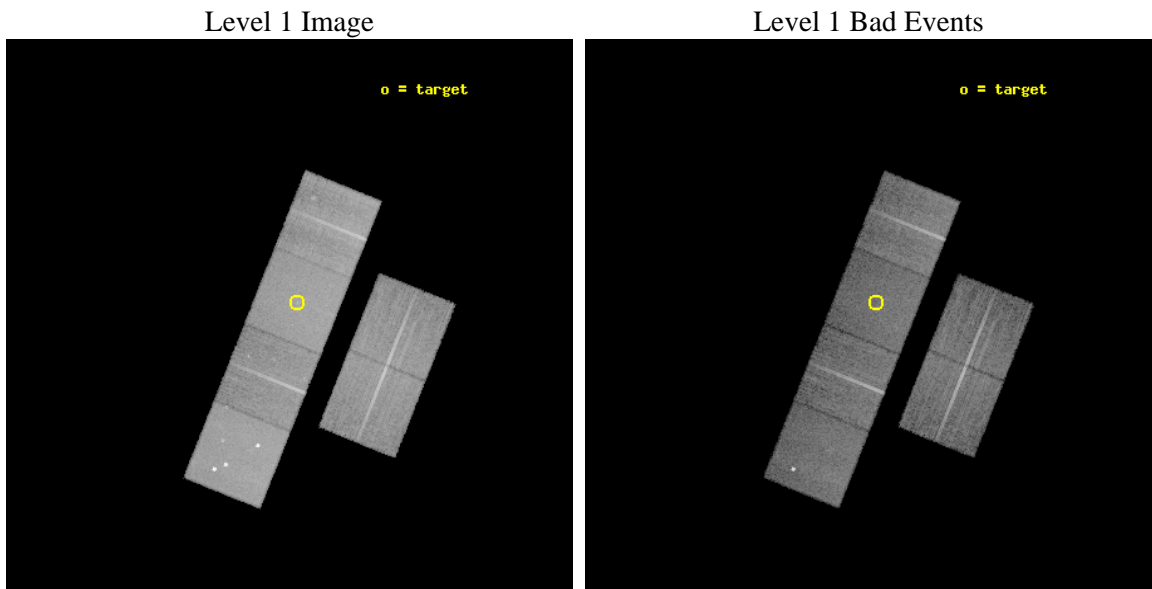
seq_num	600179	Sequence number
obs_id	2045	Observation id
title	THE EVOLUTION OF GAS EJECTION FROM MERGING GALAXIES	Proposal title
observer	Dr. Andrew Read	Principal investigator
object	ARP 222	Source name
dtcycle	0	
cycle	P	events from which exps? Prim/Second/Both
ra_targ	354.975833	Observer's specified target RA [deg]
dec_targ	-12.291944	Observer's specified target Dec [deg]
ra_nom	354.98835985753	Nominal RA [deg]
dec_nom	-12.327346513912	Nominal Dec [deg]
roll_nom	291.81994179947	Nominal Roll [deg]
revision	3	Processing version of data
ontime	19254.400017917	Sum of GTIs [s]
livetime	19010.589211282	Livetime [s]
ontime2	19254.400017917	Sum of GTIs [s]
ontime3	19254.400017917	Sum of GTIs [s]
ontime5	19254.400017917	Sum of GTIs [s]
ontime6	19251.159027755	Sum of GTIs [s]
ontime7	19254.400017917	Sum of GTIs [s]
ontime8	19251.159057662	Sum of GTIs [s]
l2events	196013	Number of level 2 events



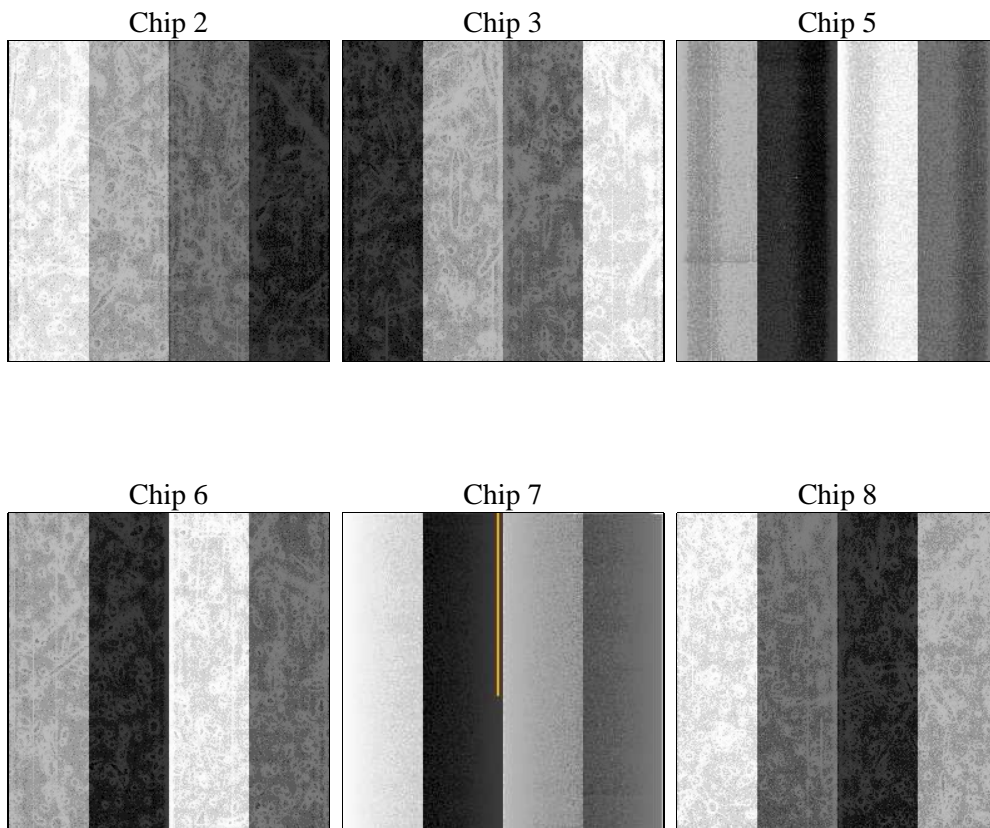
2 OBI

2.1 OBI

2.1.1 Images



2.1.2 Bias



2.1.3 Parameters

obi_num	1	Obi number	sched_exp_time	19500.000000	[s] Scheduled observation exposure time
ascdsver	8.4.5	Processing system revision	ontime	19254.400017917	Sum of GTIs [s]
caldsver	4.5.2	 	ontime2	19254.400017917	Sum of GTIs [s]
date	2012-09-29T02:48:24	Date and time of file creation	ontime3	19254.400017917	Sum of GTIs [s]
revision	3	Processing version of data	ontime5	19254.400017917	Sum of GTIs [s]
			ontime6	19251.159027755	Sum of GTIs [s]
			ontime7	19254.400017917	Sum of GTIs [s]
			ontime8	19251.159057662	Sum of GTIs [s]
			l1events	882954	Number of level 1 events

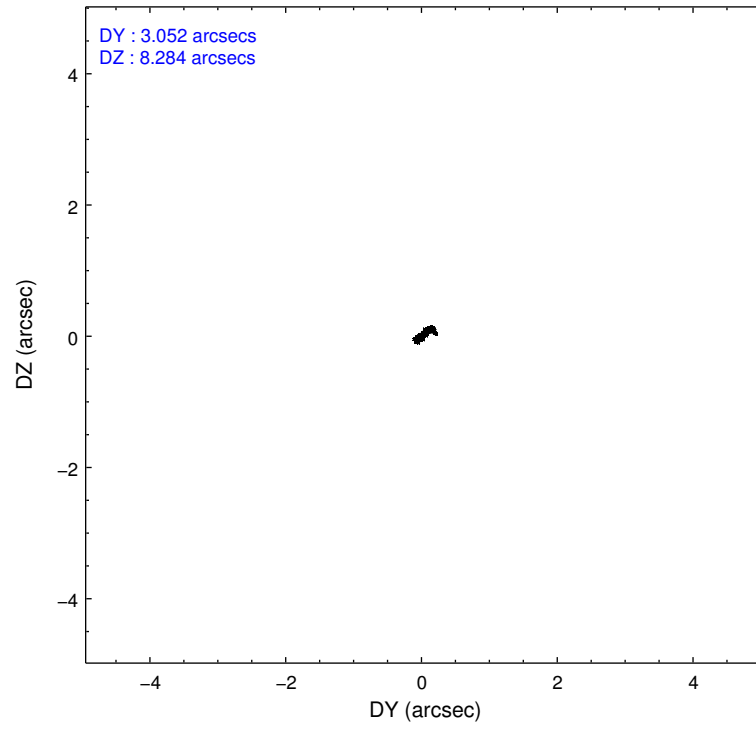
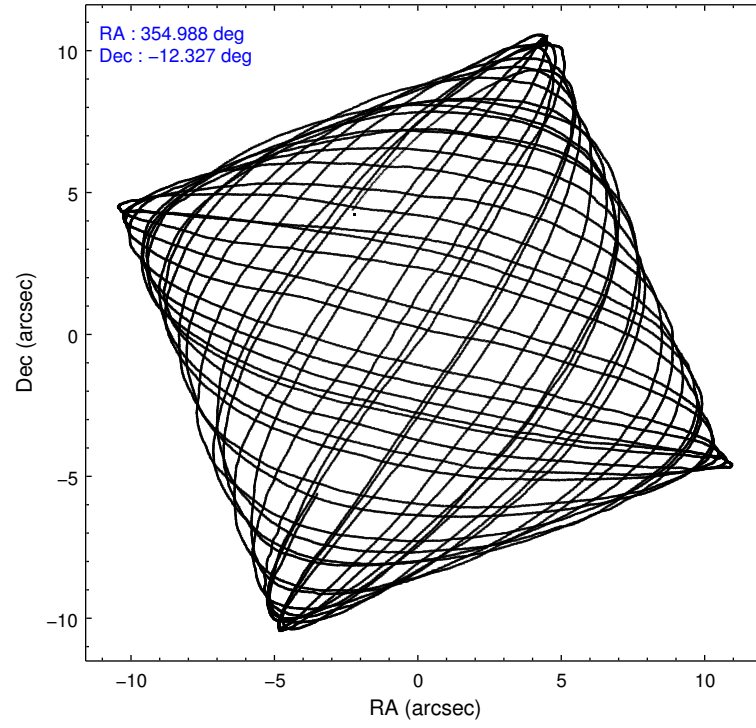
2.1.4 Events

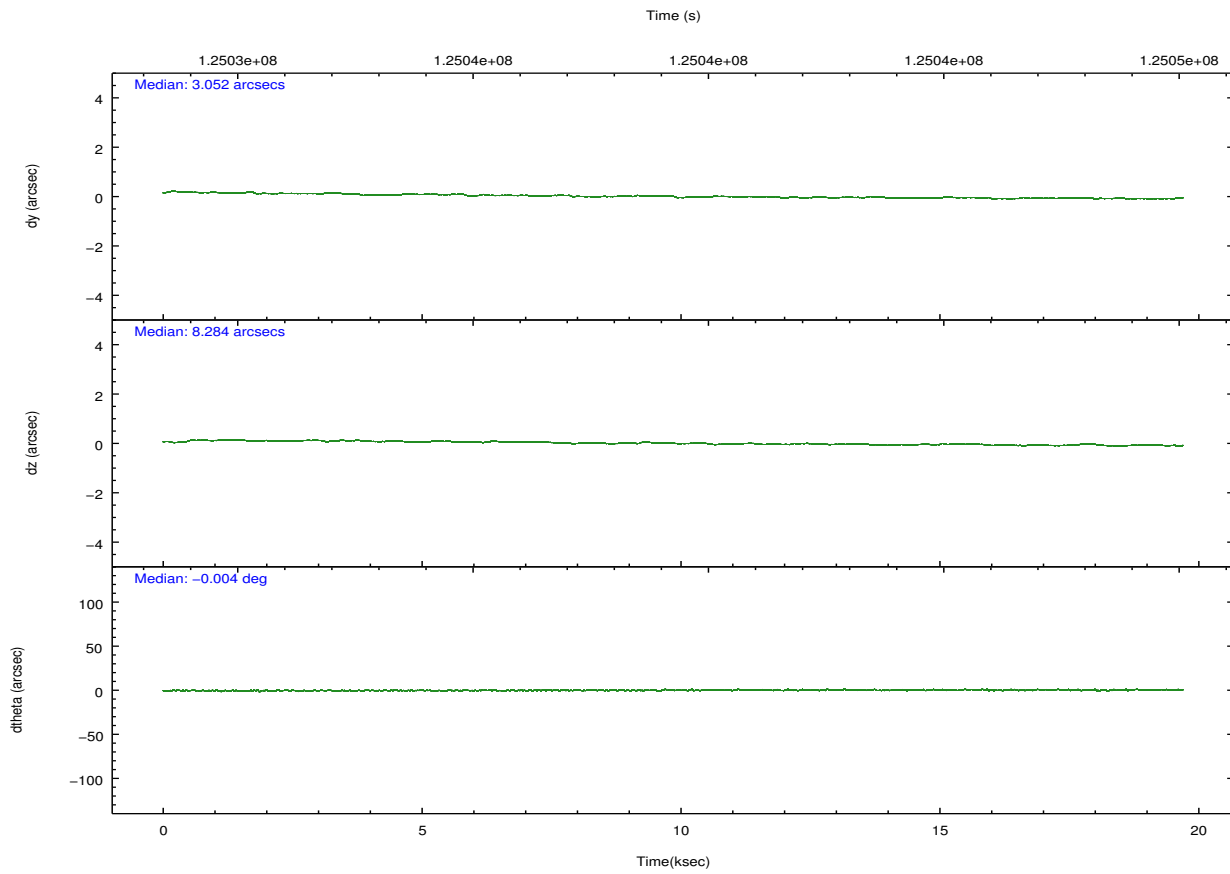
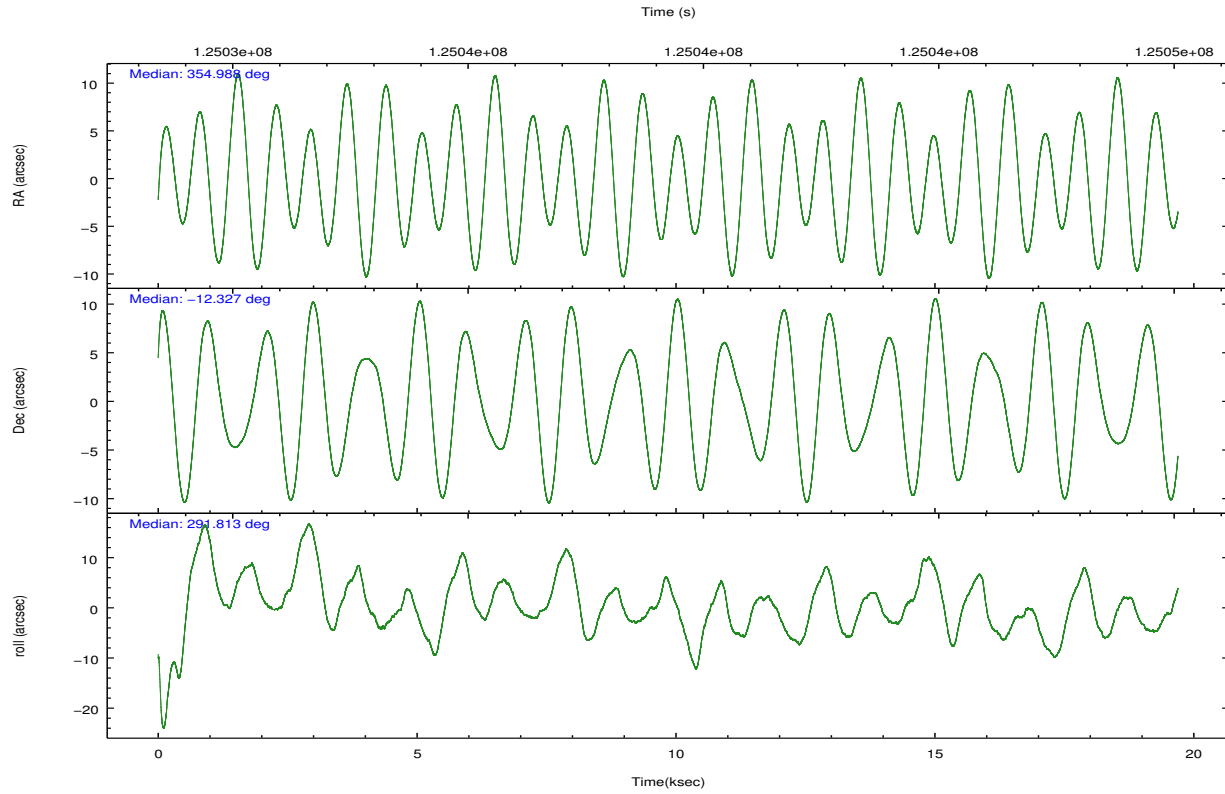
	ccd 2	ccd 3	ccd 5	ccd 6	ccd 7	ccd 8		ccd 2	ccd 3	ccd 5	ccd 6	ccd 7	ccd 8
level 1 events	125926	119532	189266	123379	162087	162764	grade 0 events	6007	6118	16651	6283	6807	12702
rejected events	111624	105170	98305	108243	93806	125249		4%	5%	8%	5%	4%	7%
rejected %	88%	87%	51%	87%	57%	76%	grade 1 events	59	54	2722	73	148	134
								0%	0%	1%	0%	0%	0%
							grade 2 events	3110	2912	24747	3106	13436	7131
								2%	2%	13%	2%	8%	4%
							grade 3 events	1270	1329	3638	1399	6112	4735
								1%	1%	1%	1%	3%	2%
							grade 4 events	1358	1367	3487	1413	6108	4401
								1%	1%	1%	1%	3%	2%
							grade 5 events	4259	4771	13581	5317	15460	6754
								3%	3%	7%	4%	9%	4%
							grade 6 events	2561	2642	42463	2944	35835	8553
								2%	2%	22%	2%	22%	5%
							grade 7 events	107302	100339	81977	102844	78181	118354
								85%	83%	43%	83%	48%	72%

2.2 Compared Parameters

Parameter	Planned	Actual	Parameter	Planned	Actual
Instrument	ACIS	ACIS	Obspar format version number	7	7
Detector	ACIS-235678	ACIS-235678	Obspar file type	PREDICTED	ACTUAL
Grating	NONE	NONE	Obspar update status	NONE	UPDATED
Data mode	FAINT	FAINT	Number of optional ACIS chips dropped	0	0
Observation mode	POINTING	POINTING	On-chip summing requested	N	N
[deg] Pointing RA	354.966215	354.9883598575342	Subarray requested	NONE	NONE
[deg] Pointing Dec	-12.310739	-12.3273465139119	Alternating exposures requested	N	N
[deg] Pointing Roll	291.658581	291.8199417994687	[s] Primary exposure time	0.000000	3.2
[mm] SIM focus pos	-0.684267	-0.6828225247311905			
[mm] SIM defocus	0	0.001444936568705701			
[mm] SIM translation stage pos	-190.132523	-190.1400660498719			
[mm] SIM translation stage offset	0	0.00754346686406393			
[s] Observation start time (MET)	125029592.184000	125028845.90115			
Observation start date	2001-12-18T02:25:28	2001-12-18T02:14:05			
[s] Observation end time (MET)	125049092.184000	125049933.22699			
Observation end date	2001-12-18T07:50:28	2001-12-18T08:05:33			
Read mode	TIMED	TIMED			

2.3 Aspect



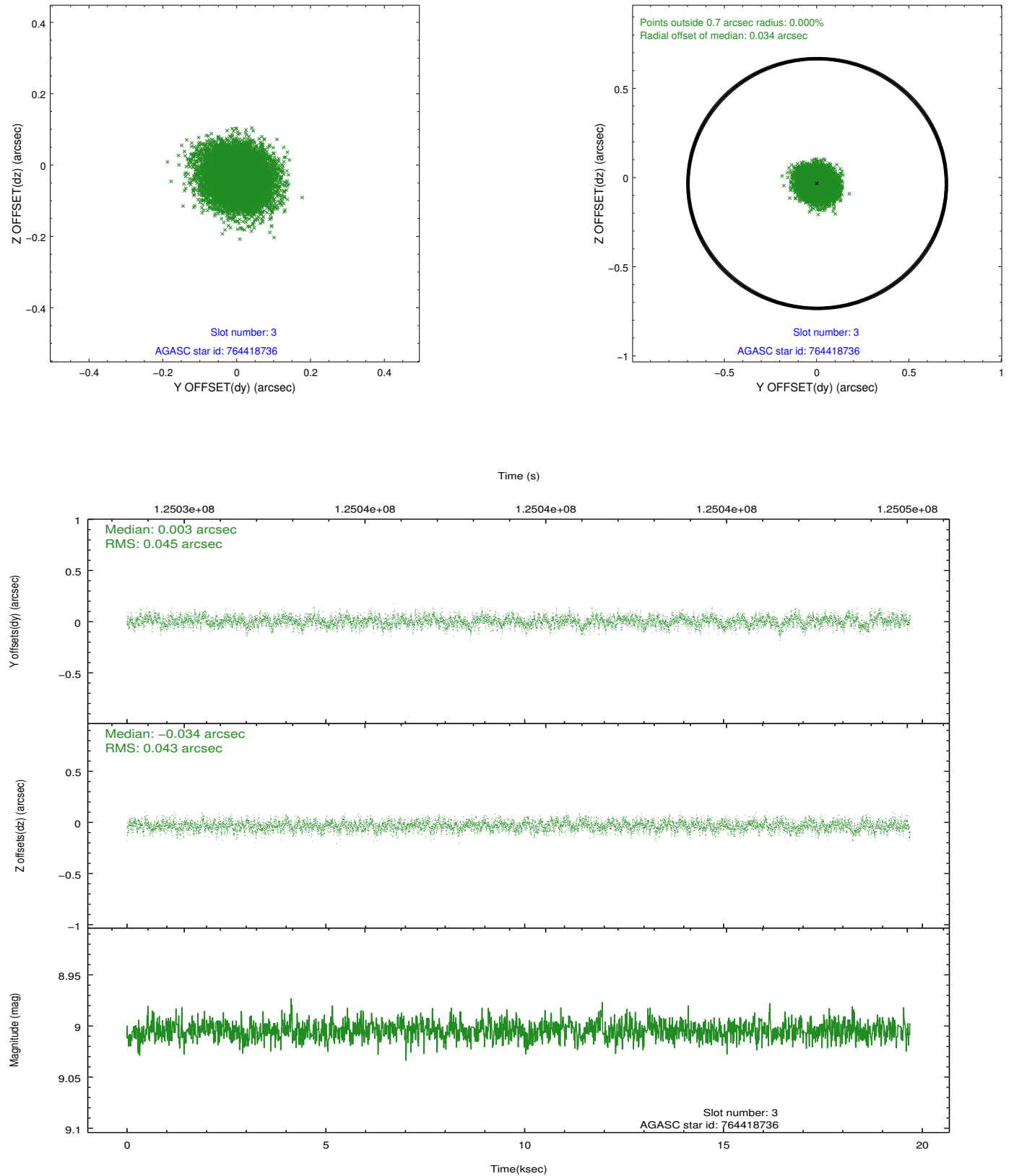


Slot Statistics

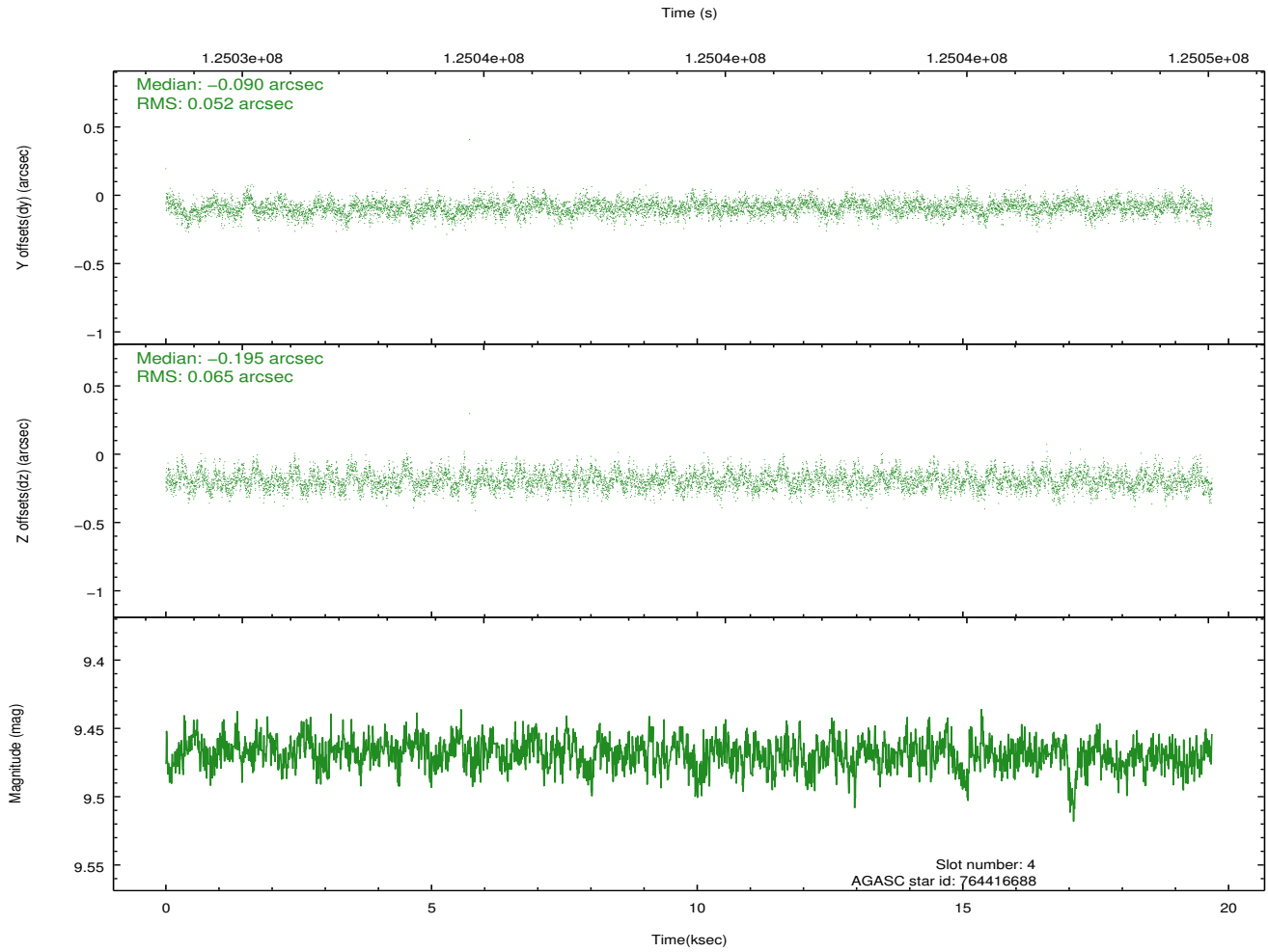
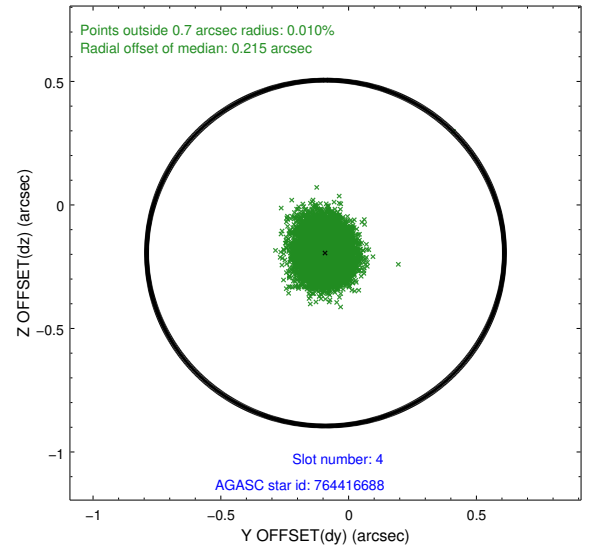
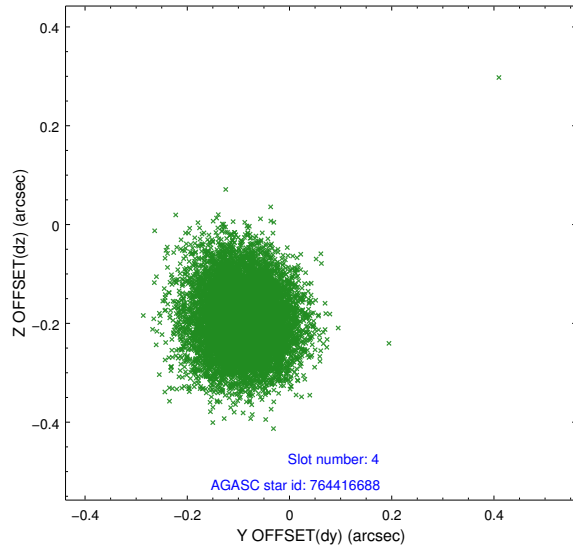
slot	status	id	mag	n_pts	med_dy	med_dz	dr1	dr2	ra	dec	mean_y	mean_z
0	FID	ACIS-S-2	7.11	4804	-0.006	-0.007	0.007	0.011	0.000000	0.000000	-755.73	-1729.50
1	FID	ACIS-S-4	7.20	4804	-0.033	0.005	0.006	0.012	0.000000	0.000000	2157.44	178.78
2	FID	ACIS-S-5	7.24	4803	0.007	0.011	0.007	0.013	0.000000	0.000000	-1808.30	172.70
3	GUIDE	764418736	9.00	9603	0.003	-0.034	0.067	0.108	354.892618	-11.952941	-1293.42	233.94
4	GUIDE	764416688	9.47	9603	-0.090	-0.195	0.088	0.142	354.421563	-12.201872	-1070.38	-1637.82
5	GUIDE	764939704	9.67	9585	0.230	-0.051	0.135	0.215	355.122802	-12.949378	2339.28	-338.46
6	GUIDE	764546592	9.80	9603	0.076	0.113	0.093	0.153	355.367033	-11.958616	-656.69	1779.04
7	GUIDE	764544264	10.12	9585	-0.214	0.159	0.170	0.281	355.363349	-11.465365	-2311.58	2425.14

2.4 Star Slots

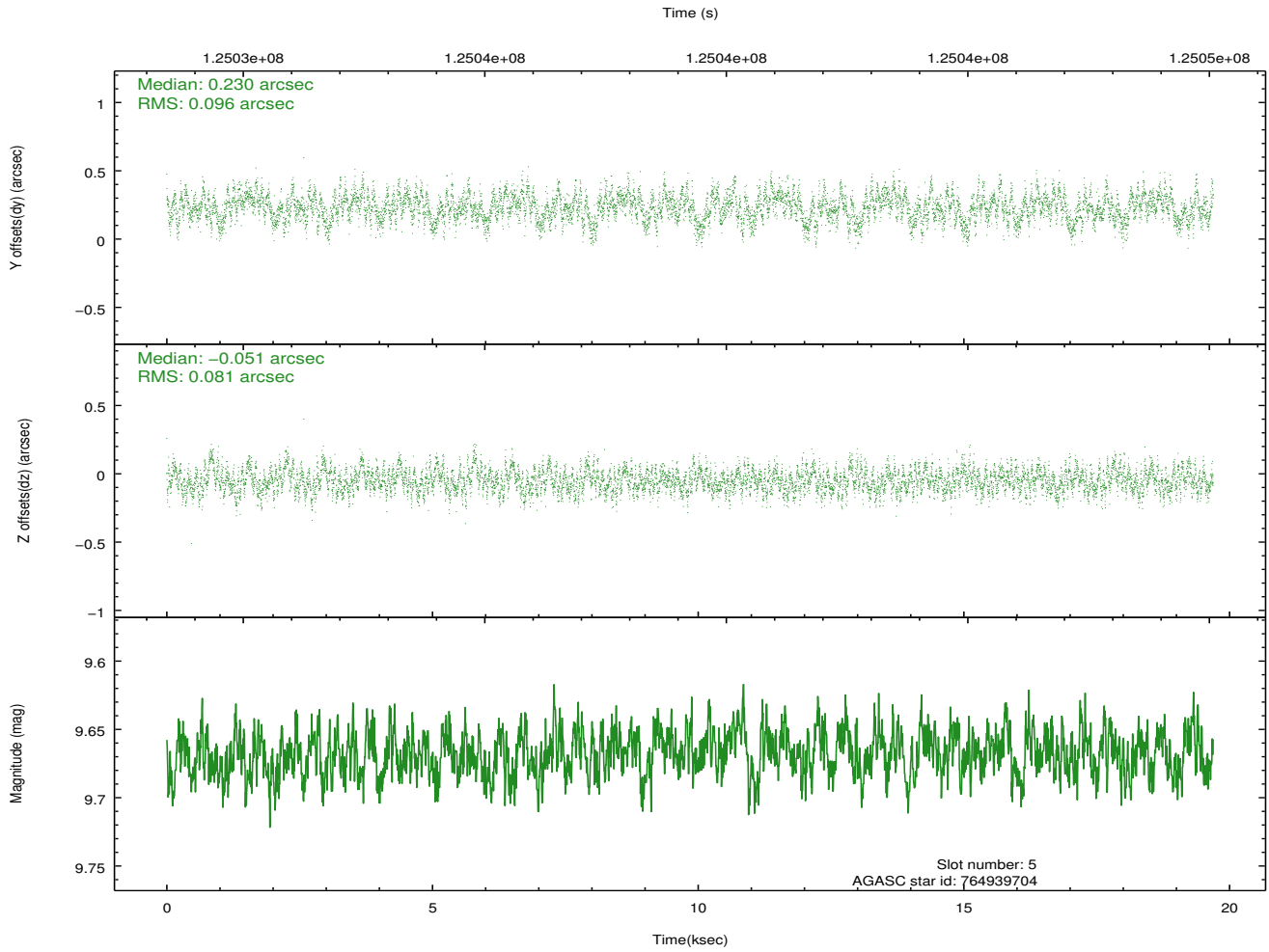
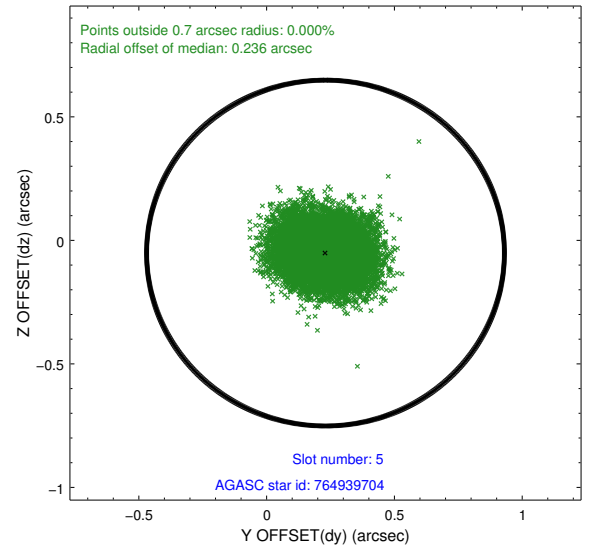
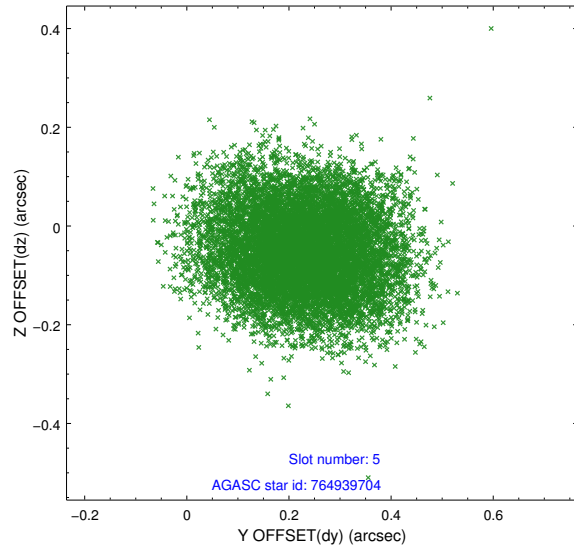
2.4.1 Slot 3



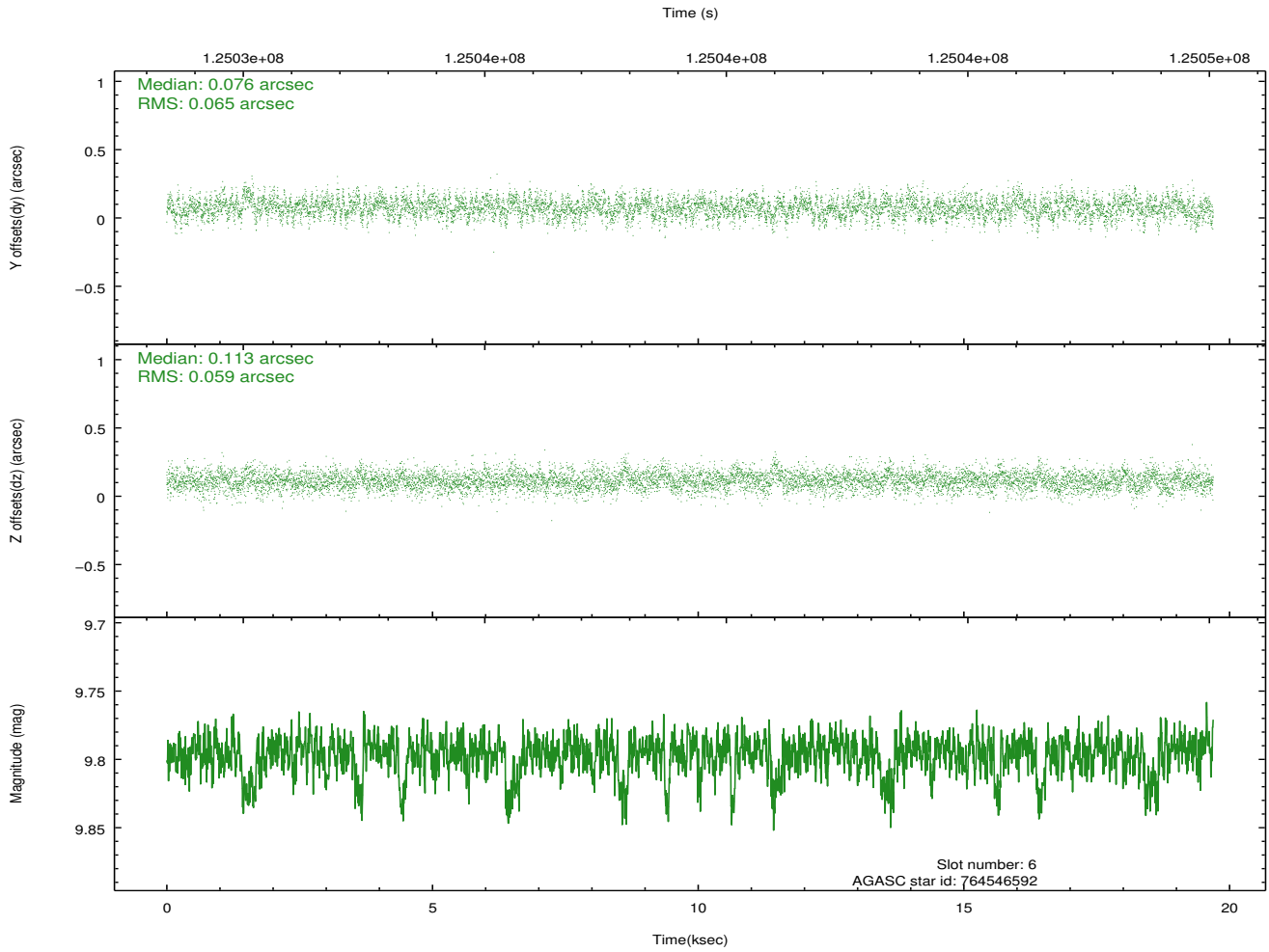
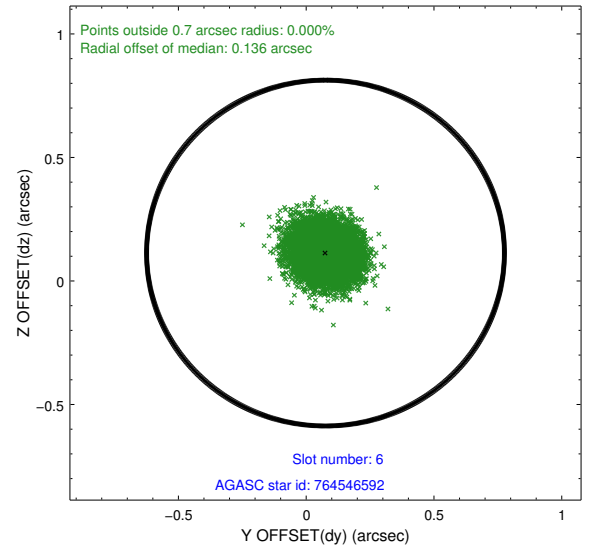
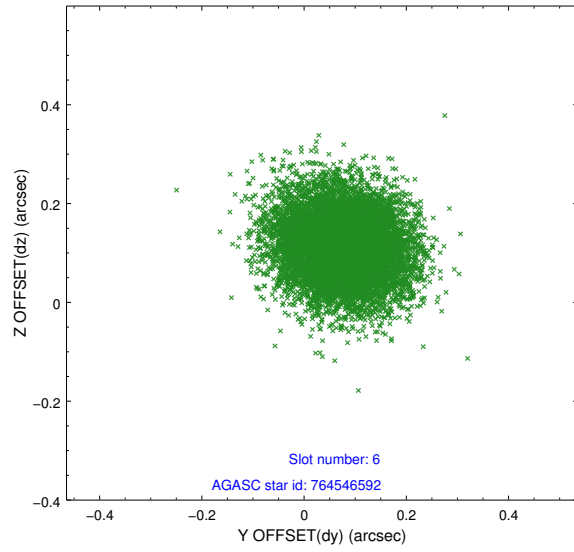
2.4.2 Slot 4



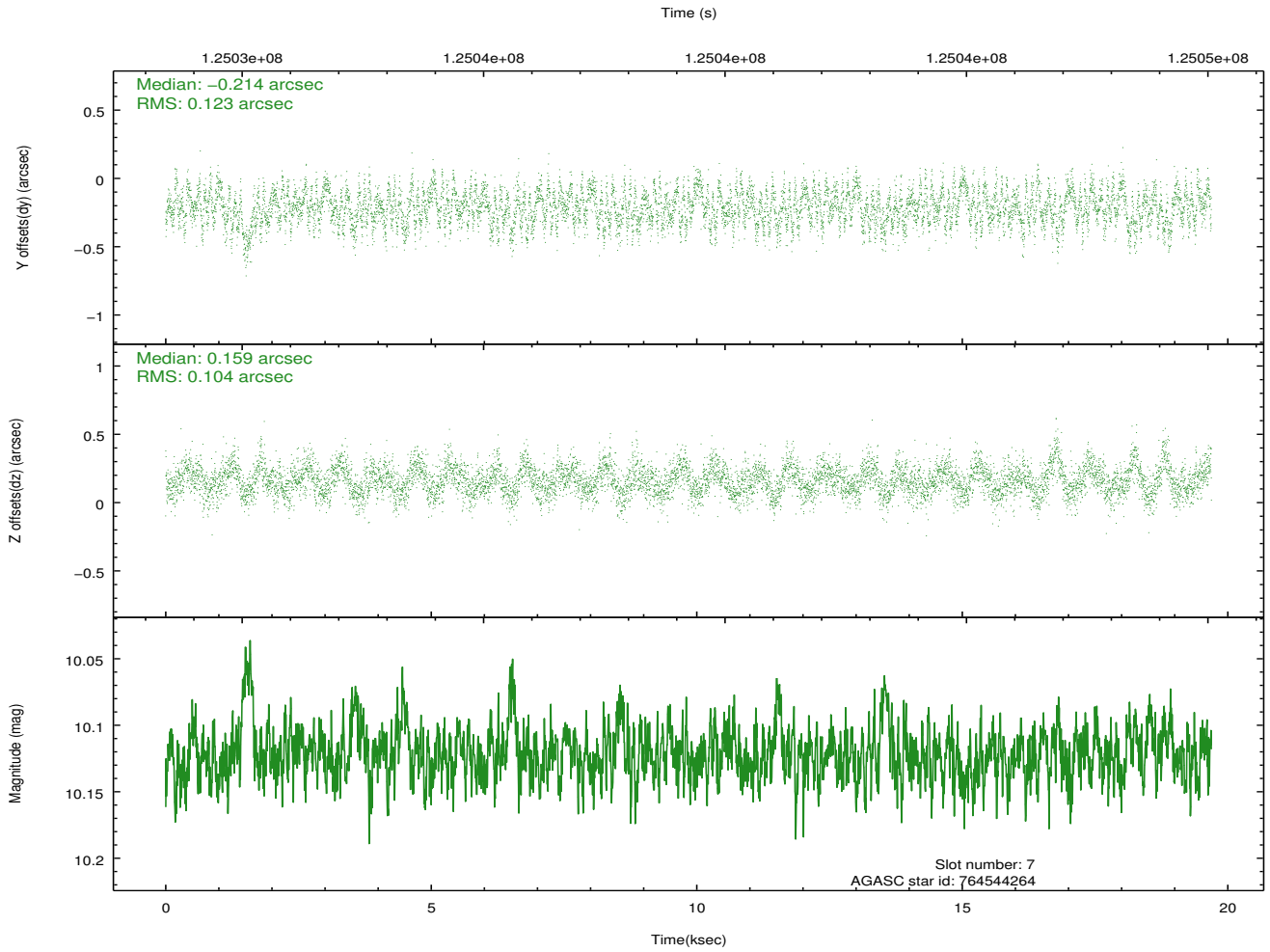
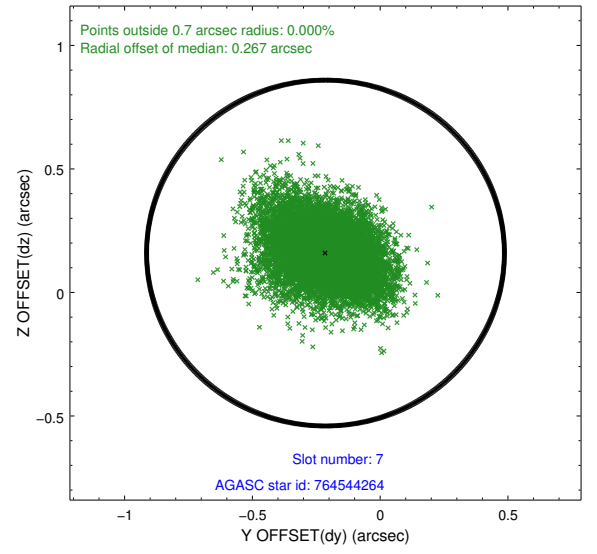
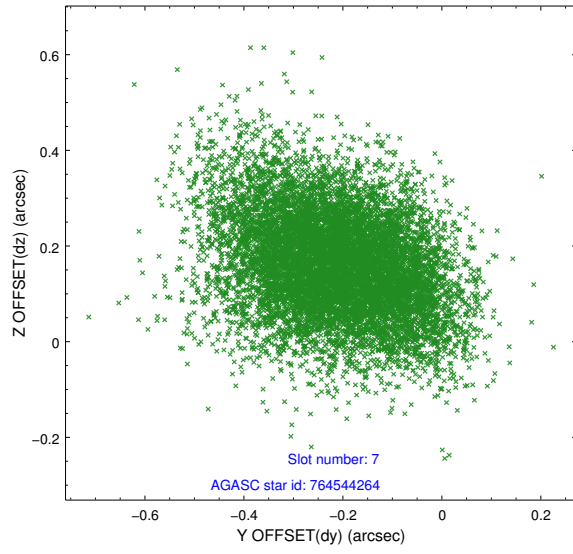
2.4.3 Slot 5



2.4.4 Slot 6

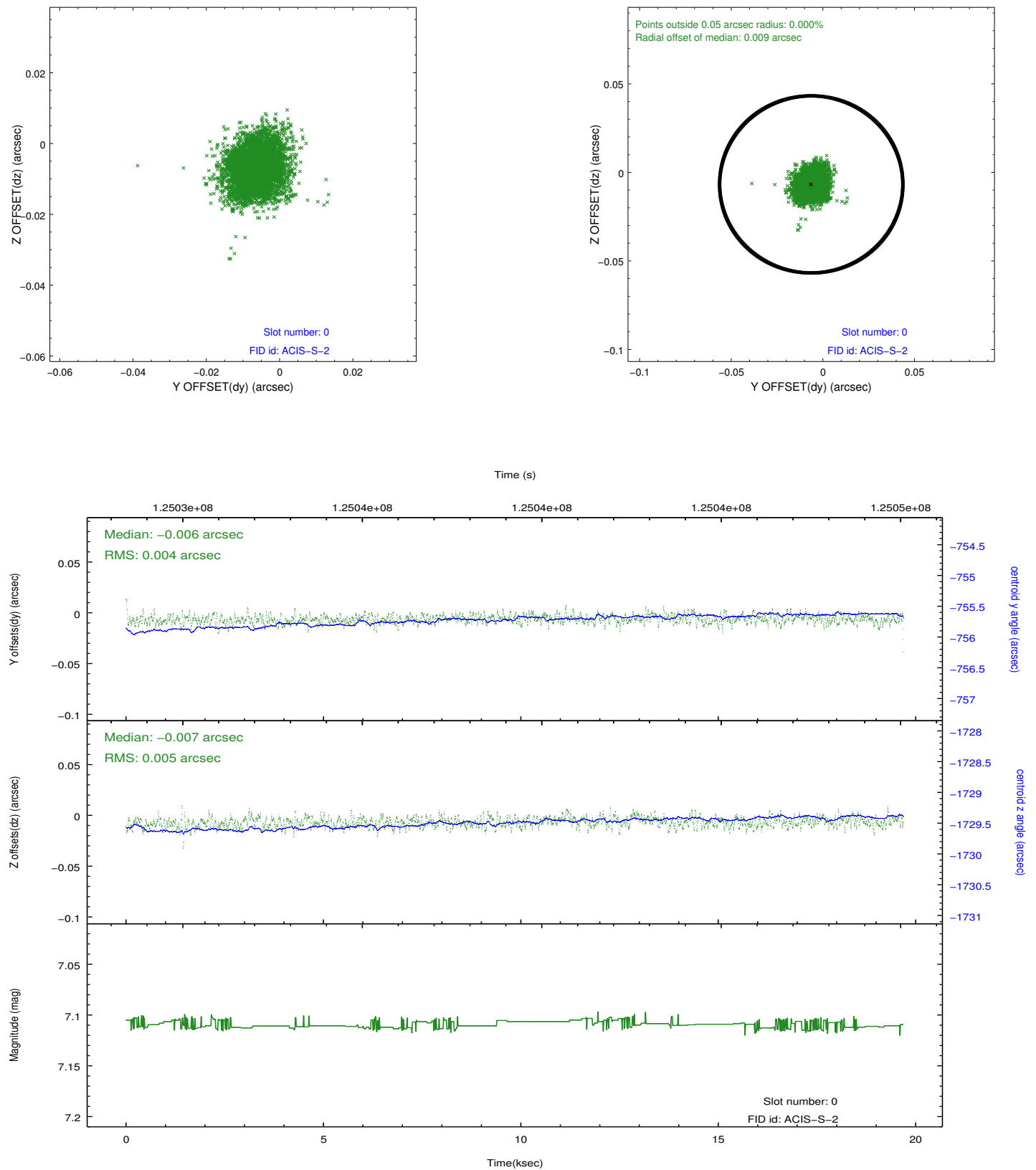


2.4.5 Slot 7

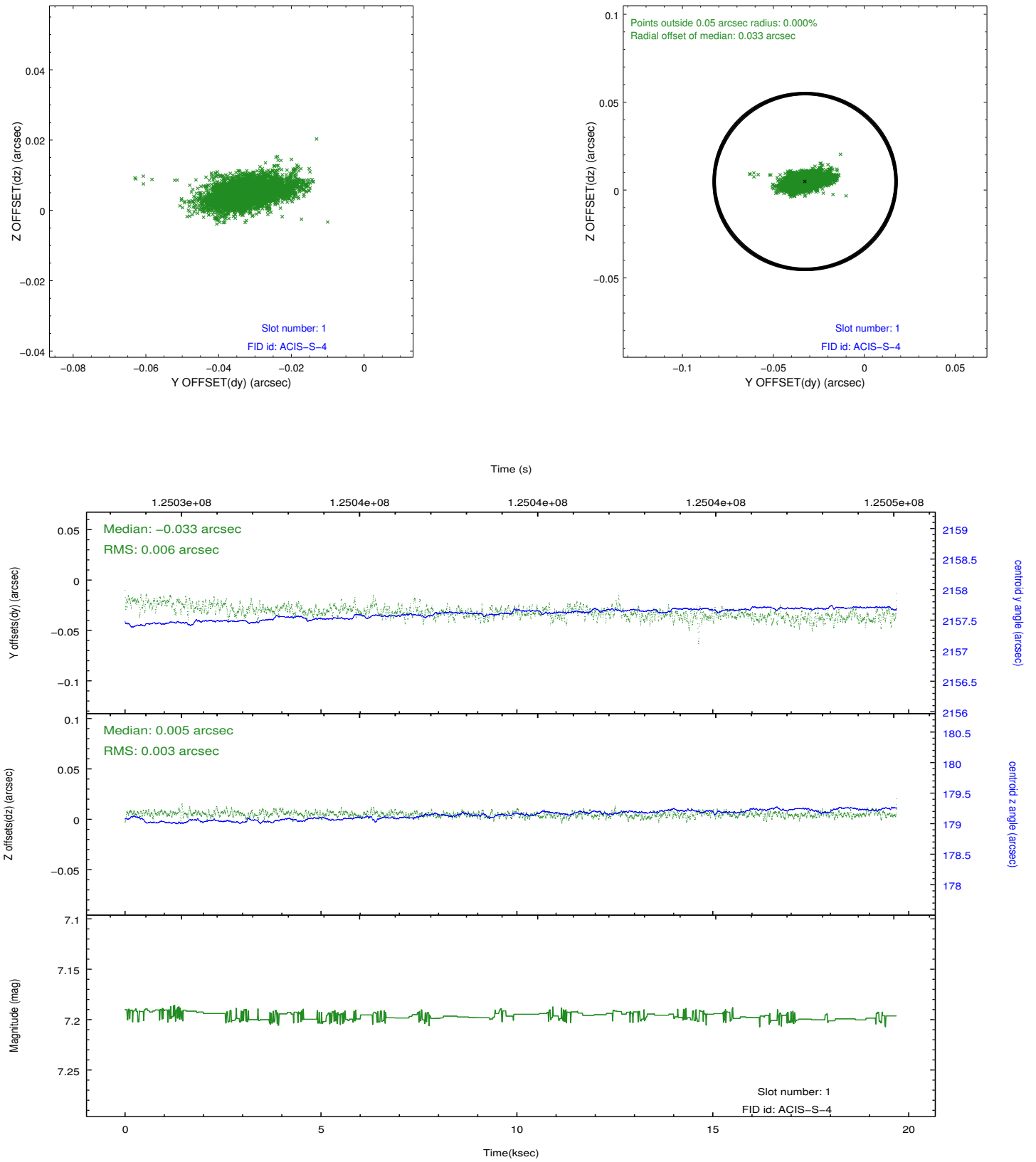


2.5 FID Slots

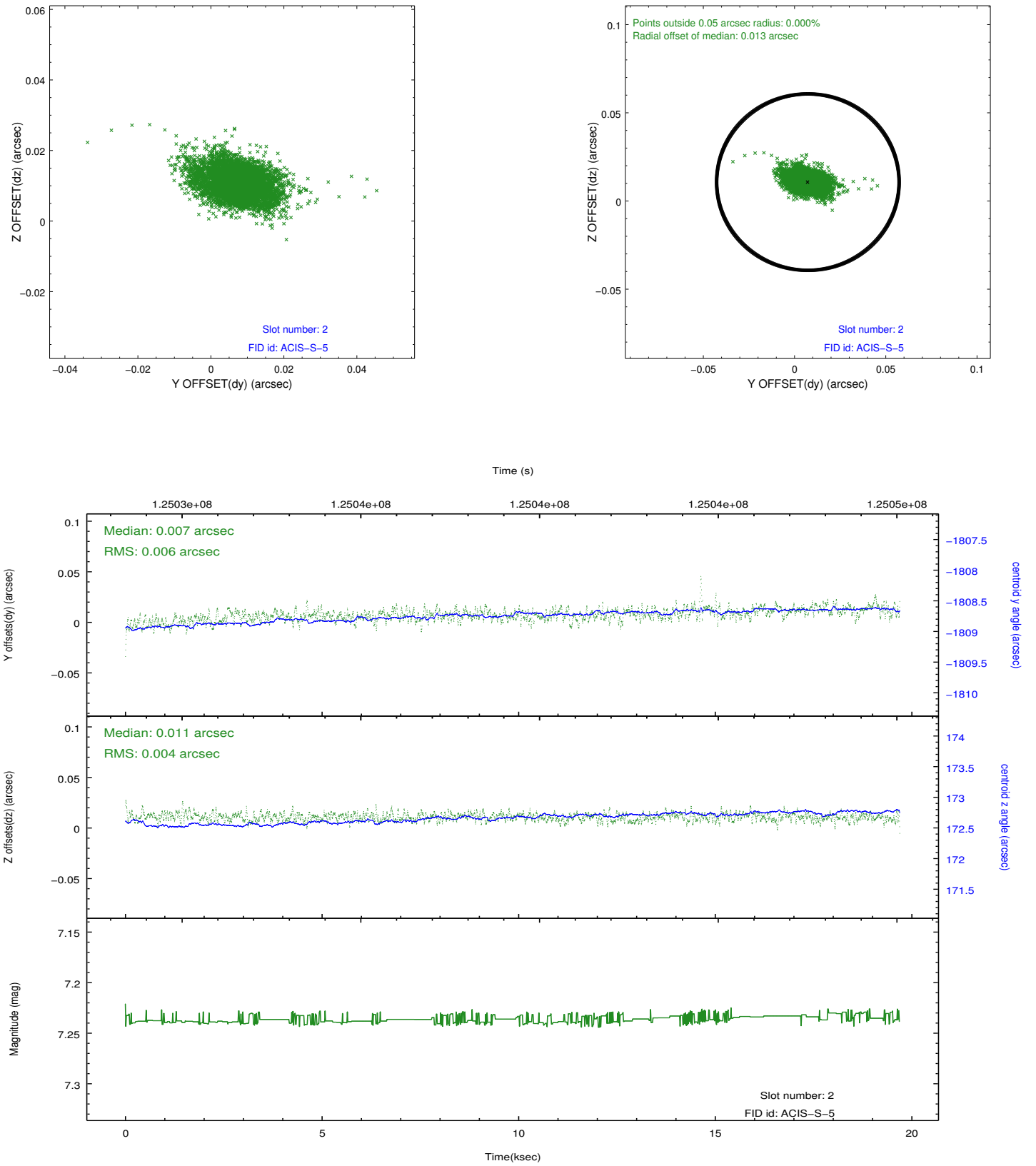
2.5.1 Slot 0



2.5.2 Slot 1



2.5.3 Slot 2



A Summary

A.1 Status

V&V Scientist	Beth Sundheim
V&V Date (YYYY-MM-DD)	2012.10.01
V&V Edition	1
V&V Disposition and Status	OK
V&V Charge Time	19.257

A.2 Comments