

V&V Reference Report

L2 ASCDS Version : 7.6.9

Observation 2043 - L2 Version 001
Chandra X-Ray Center

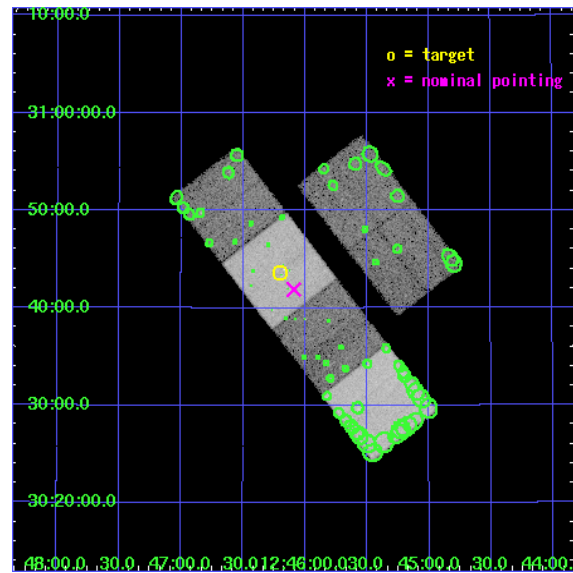
L2 Processing Date : Nov 23 2006

Contents

1	Front	2
2	OBI	3
2.1	OBI	3
2.1.1	Images	3
2.1.2	Bias	3
2.1.3	Parameters	4
2.1.4	Events	4
2.2	Compared Parameters	5
2.3	Aspect	6
2.4	Star Slots	9
2.4.1	Slot 3	9
2.4.2	Slot 4	10
2.4.3	Slot 5	11
2.4.4	Slot 6	12
2.4.5	Slot 7	13
2.5	FID Slots	14
2.5.1	Slot 0	14
2.5.2	Slot 1	15
2.5.3	Slot 2	16
3	Point Sources	17
A	Summary	18
A.1	Status	18
A.2	Comments	18

1 Front

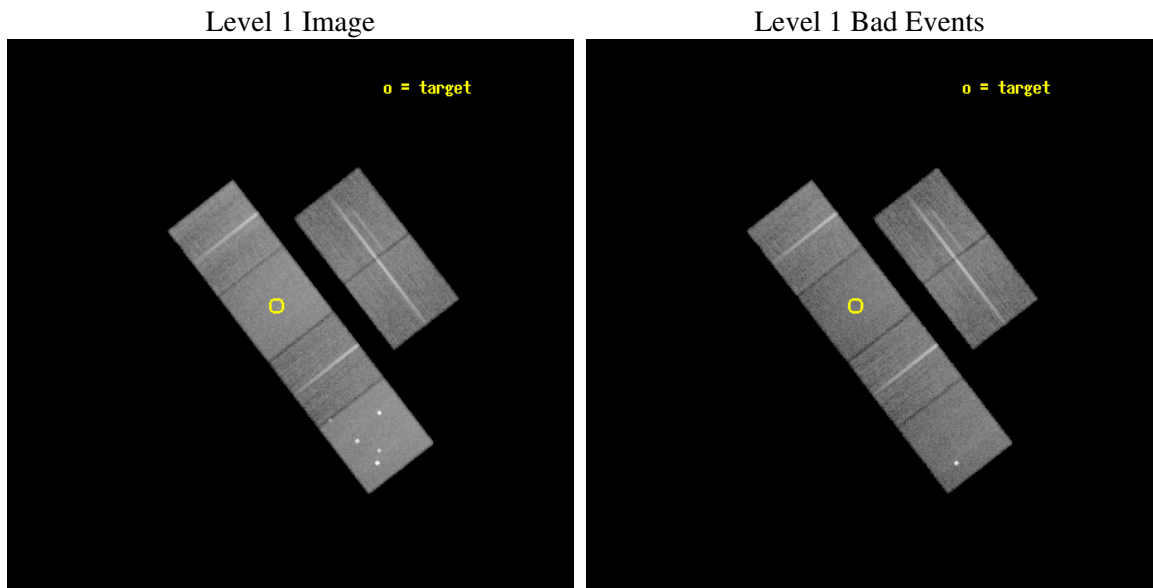
seq_num	600177
obs_id	2043
title	THE EVOLUTION OF GAS EJECTION FROM MERGING GALAXIES
observer	Dr. Andrew Read
object	ARP 242
dtcycle	0
cycle	P
ra_targ	191.550833
dec_targ	30.726944
ra_nom	191.52246251712
dec_nom	30.698448585004
roll_nom	232.22296491371
revision	2
ontime	28915.200026929
livetime	28549.058353545
ontime2	28905.477146119
ontime3	28911.959086612
ontime5	28905.477106303
ontime6	28908.718116373
ontime7	28915.200026929
ontime8	28915.200026929
l2events	258859



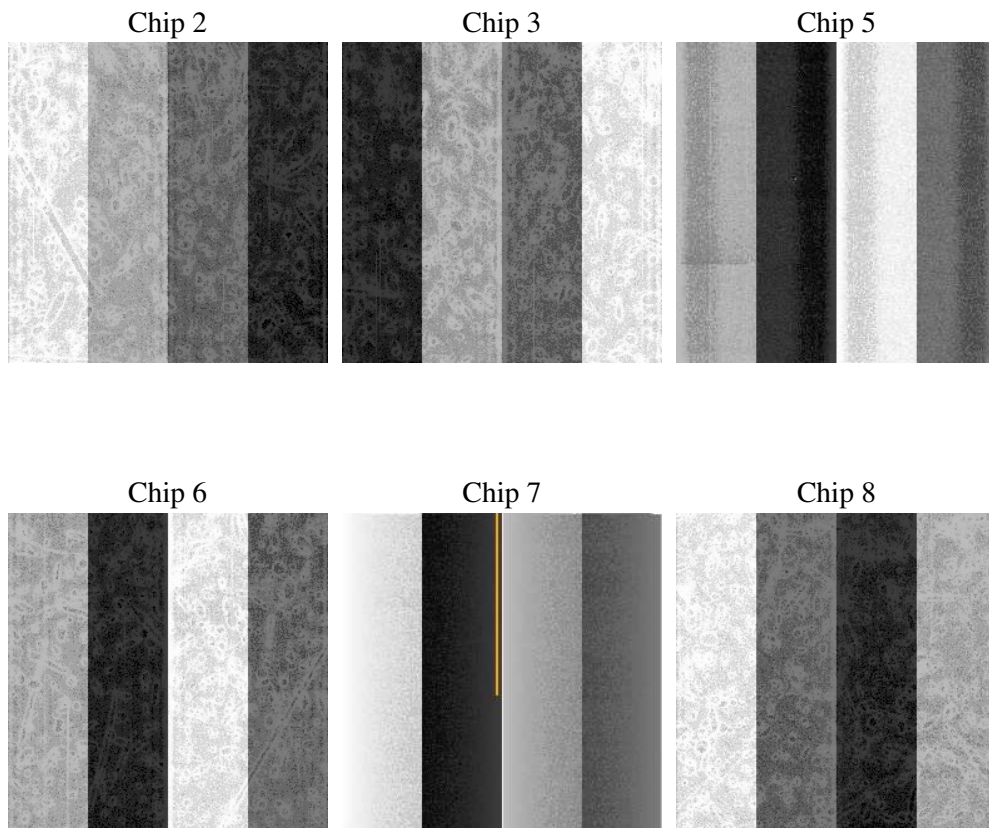
2 OBI

2.1 OBI

2.1.1 Images



2.1.2 Bias



2.1.3 Parameters

obi_num	0
ascdsver	7.6.9
caldsver	3.2.4
date	2006-11-23T05:34:41
revision	2

sched_exp_time	29000.000000
ontime	28958.324657932
ontime2	28948.601777121
ontime3	28955.083697706
ontime5	28948.601737306
ontime6	28951.842747375
ontime7	28958.324657932
ontime8	28958.324657932
l1events	1236550

2.1.4 Events

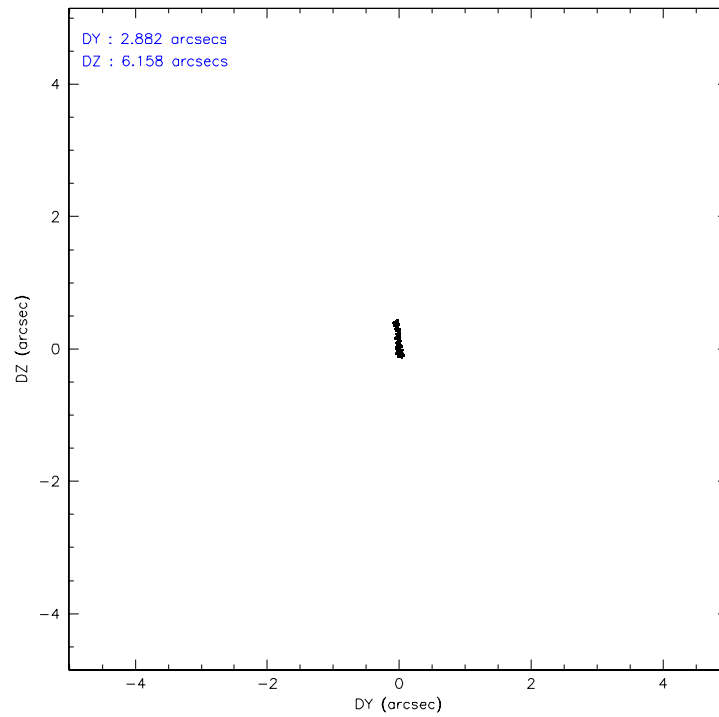
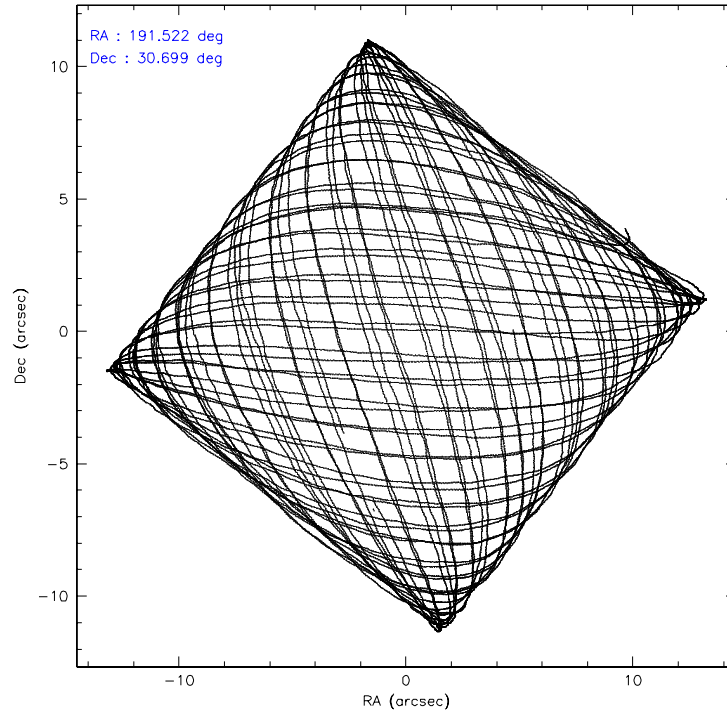
	ccd 2	ccd 3	ccd 5	ccd 6	ccd 7	ccd 8
level 1 events	177103	172380	264795	175553	225780	220939
rejected events	157430	152472	143759	154467	139095	177521
rejected %	88%	88%	54%	87%	61%	80%

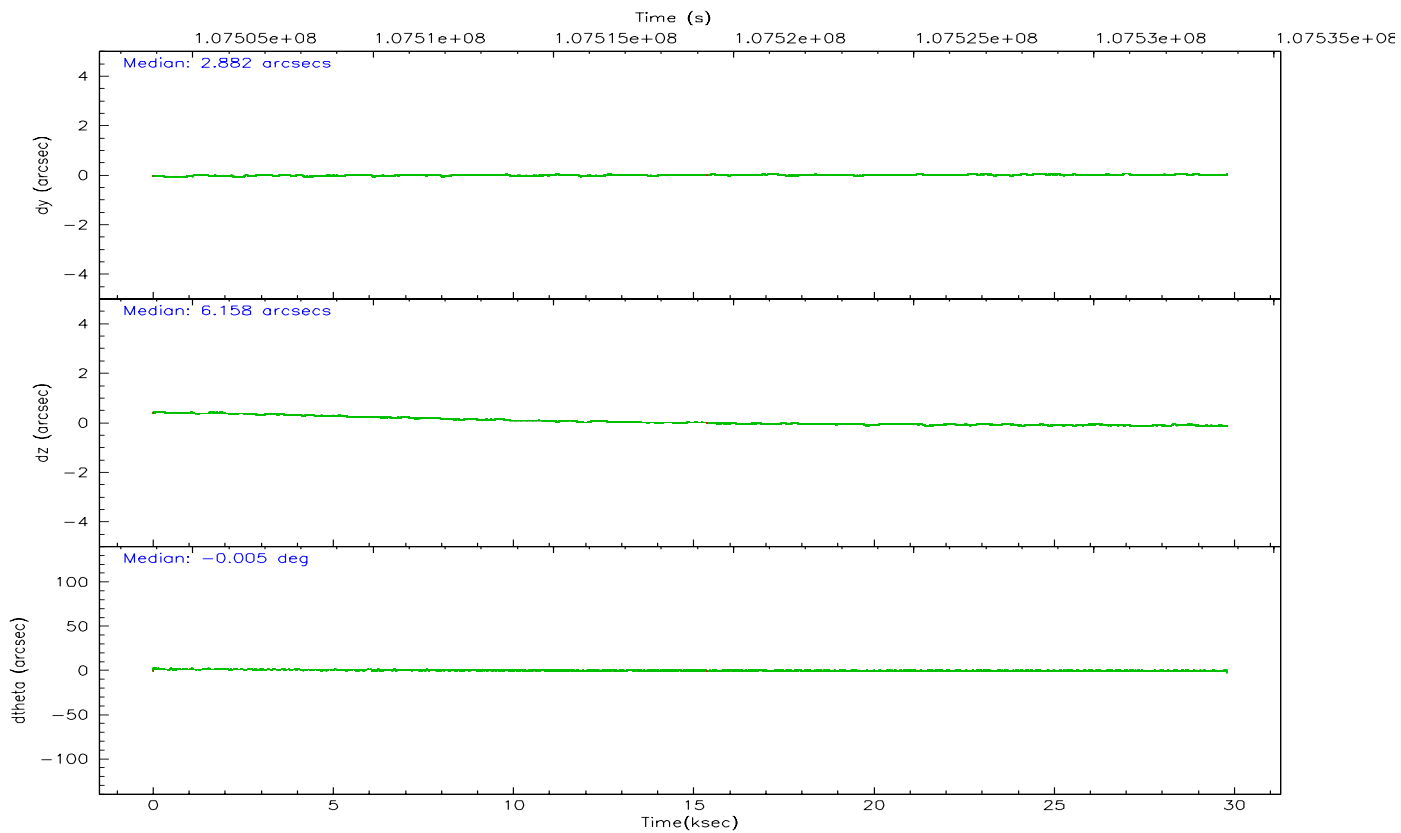
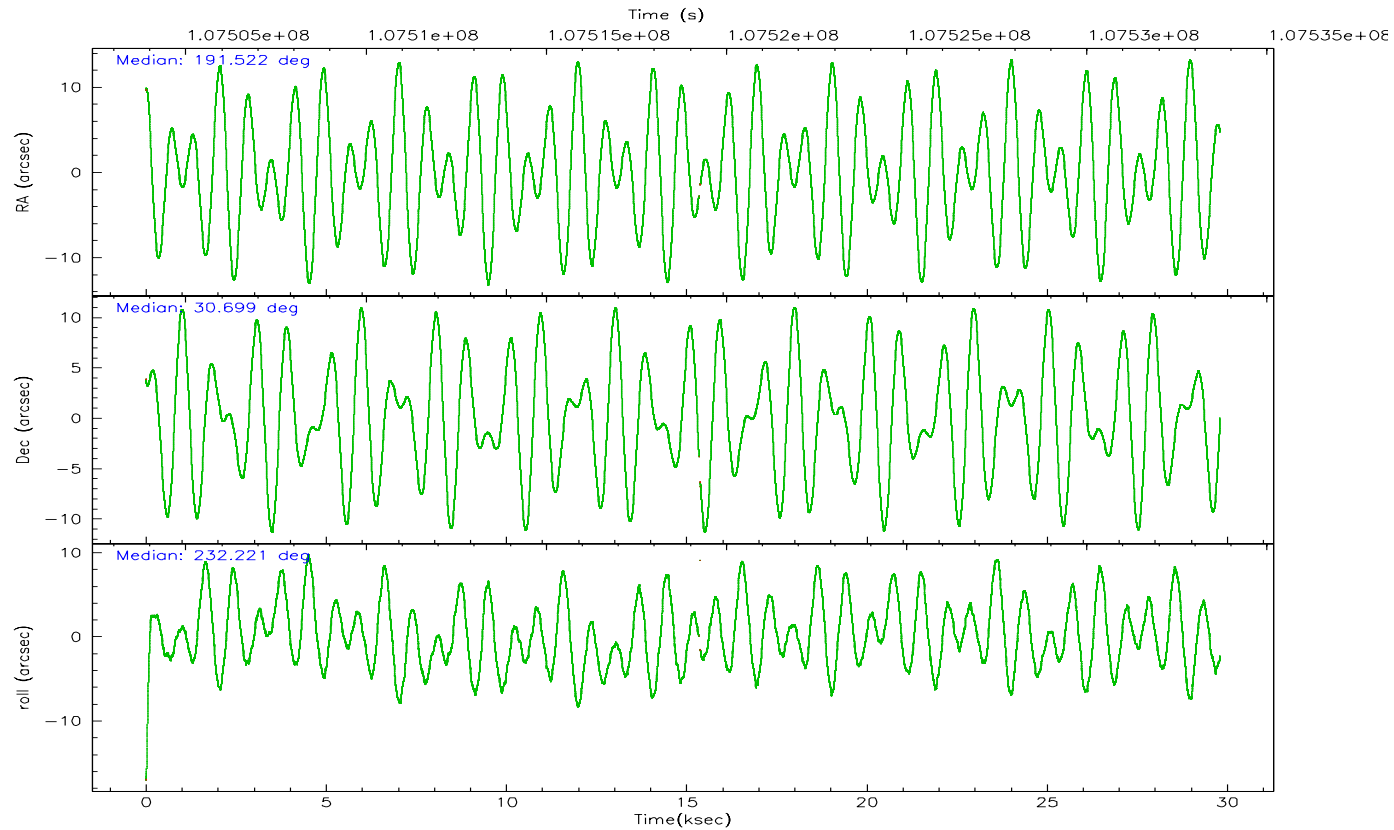
	ccd 2	ccd 3	ccd 5	ccd 6	ccd 7	ccd 8
grade 0 events	8244	8529	19362	8758	5788	13626
	4%	4%	7%	4%	2%	6%
grade 1 events	72	76	244	94	113	100
	0%	0%	0%	0%	0%	0%
grade 2 events	4329	4003	34789	4140	21002	9216
	2%	2%	13%	2%	9%	4%
grade 3 events	1814	1939	2927	2095	4709	4768
	1%	1%	1%	1%	2%	2%
grade 4 events	1858	1911	2538	2013	4666	4442
	1%	1%	0%	1%	2%	2%
grade 5 events	6158	6660	14096	7412	15376	9497
	3%	3%	5%	4%	6%	4%
grade 6 events	3454	3553	61614	4118	50653	11403
	1%	2%	23%	2%	22%	5%
grade 7 events	151174	145709	129225	146923	123473	167887
	85%	84%	48%	83%	54%	75%

2.2 Compared Parameters

Parameter	Planned	Actual	Parameter	Planned	Actual
Instrument	ACIS	ACIS	Obspar format version number	6	6
Detector	ACIS-235678	ACIS-235678	Obspar file type	PREDICTED	ACTUAL
Grating	NONE	NONE	Obspar update status	NONE	UPDATED
Data mode	FAINT	FAINT	Number of optional ACIS chips dropped	0	0
Observation mode	POINTING	POINTING	On-chip summing requested	N	N
Pointing RA	191.526453	191.5224625171172	Subarray requested	NONE	NONE
Pointing Dec	30.725535	30.69844858500407	Alternating exposures requested	N	N
Pointing Roll	232.064303	232.2229649137051	Primary exposure time	0.000000	3.2
SIM focus pos (mm)	-0.684267	-0.6828225247311905			
SIM defocus (mm)	0	0.001444936568705701			
SIM translation stage pos (mm)	-190.132523	-190.1400660498719			
SIM translation stage offset (mm)	0	0.00754346686406393			
Observation start time	107504694.184000	107503432.10887			
Observation start date	2001-05-29T06:23:50	2001-05-29T06:03:52			
Observation end time	107533694.184000	107534074.48506			
Observation end date	2001-05-29T14:27:10	2001-05-29T14:34:34			
Read mode	TIMED	TIMED			

2.3 Aspect



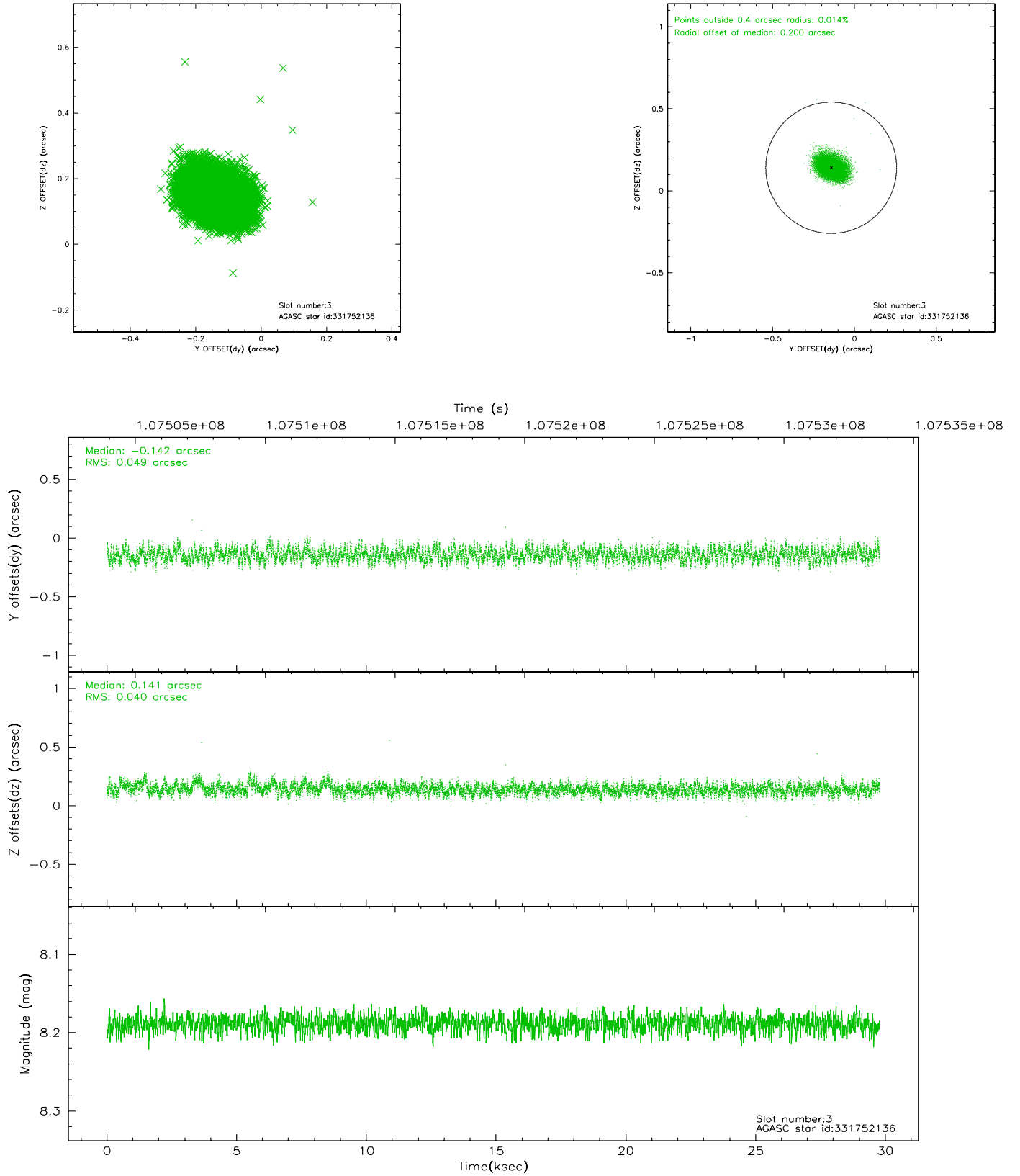


Slot Statistics

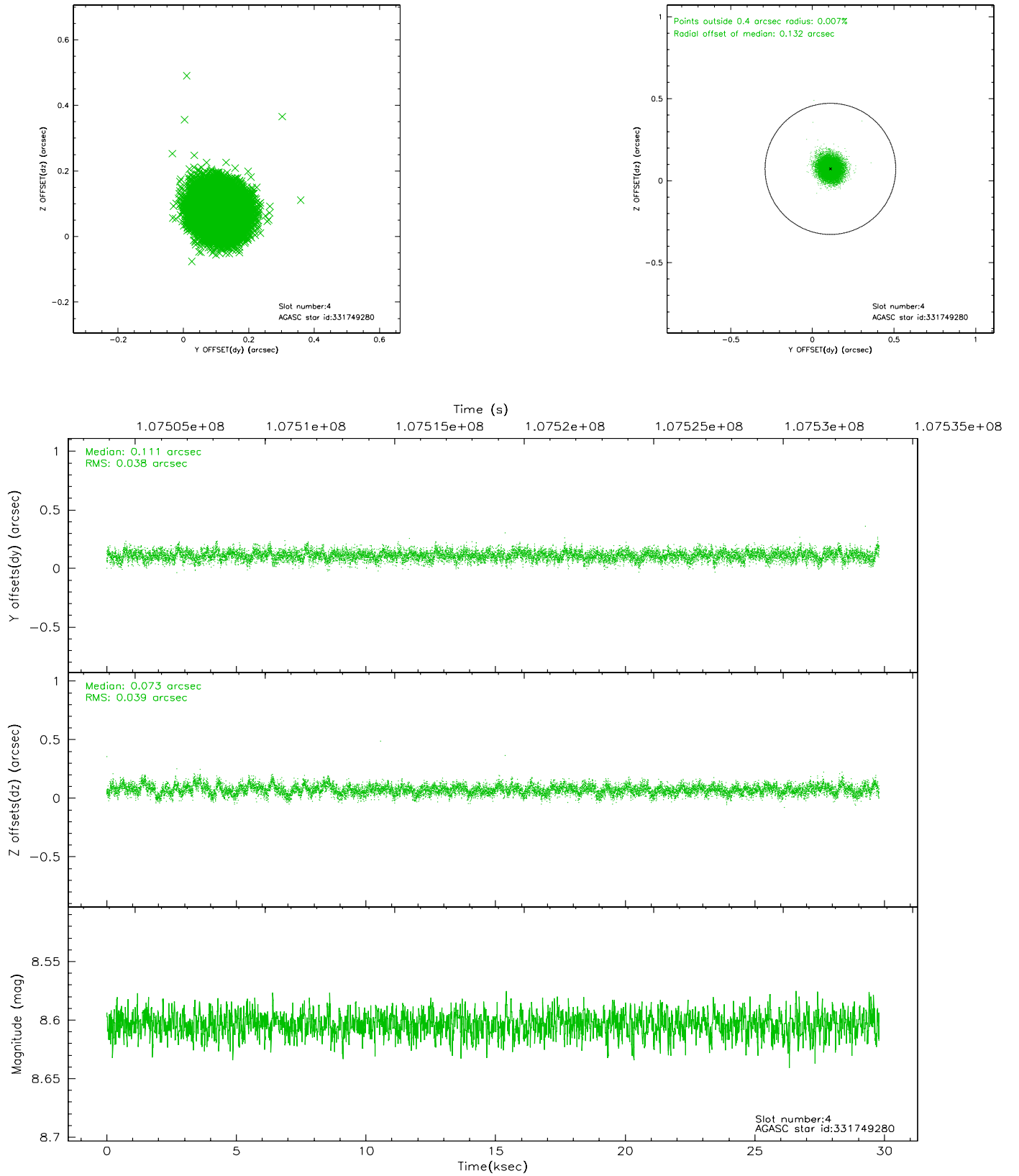
slot	status	id	mag	n_pts	med_dy	med_dz	dr1	dr2	ra	dec	mean_y	mean_z
0	FID	ACIS-S-2	7.11	7261	-0.010	0.038	0.007	0.012	0.000000	0.000000	-755.50	-1727.34
1	FID	ACIS-S-4	7.20	7259	-0.092	-0.005	0.007	0.013	0.000000	0.000000	2157.63	181.07
2	FID	ACIS-S-5	7.24	7259	0.071	-0.024	0.006	0.011	0.000000	0.000000	-1808.20	174.74
3	GUIDE	331752136	8.19	14514	-0.142	0.141	0.068	0.109	192.091746	30.767179	-1196.70	1284.59
4	GUIDE	331749280	8.60	14519	0.111	0.073	0.058	0.095	191.374125	30.197857	1789.57	794.38
5	GUIDE	331748496	9.37	14508	-0.102	0.005	0.077	0.127	191.833821	31.213608	-1968.14	-334.07
6	GUIDE	331748904	9.62	14514	0.054	-0.099	0.112	0.180	190.841572	30.797941	1091.75	-1834.13
7	GUIDE	331752784	10.04	14510	0.080	-0.107	0.127	0.260	191.648549	30.702093	-165.61	349.90

2.4 Star Slots

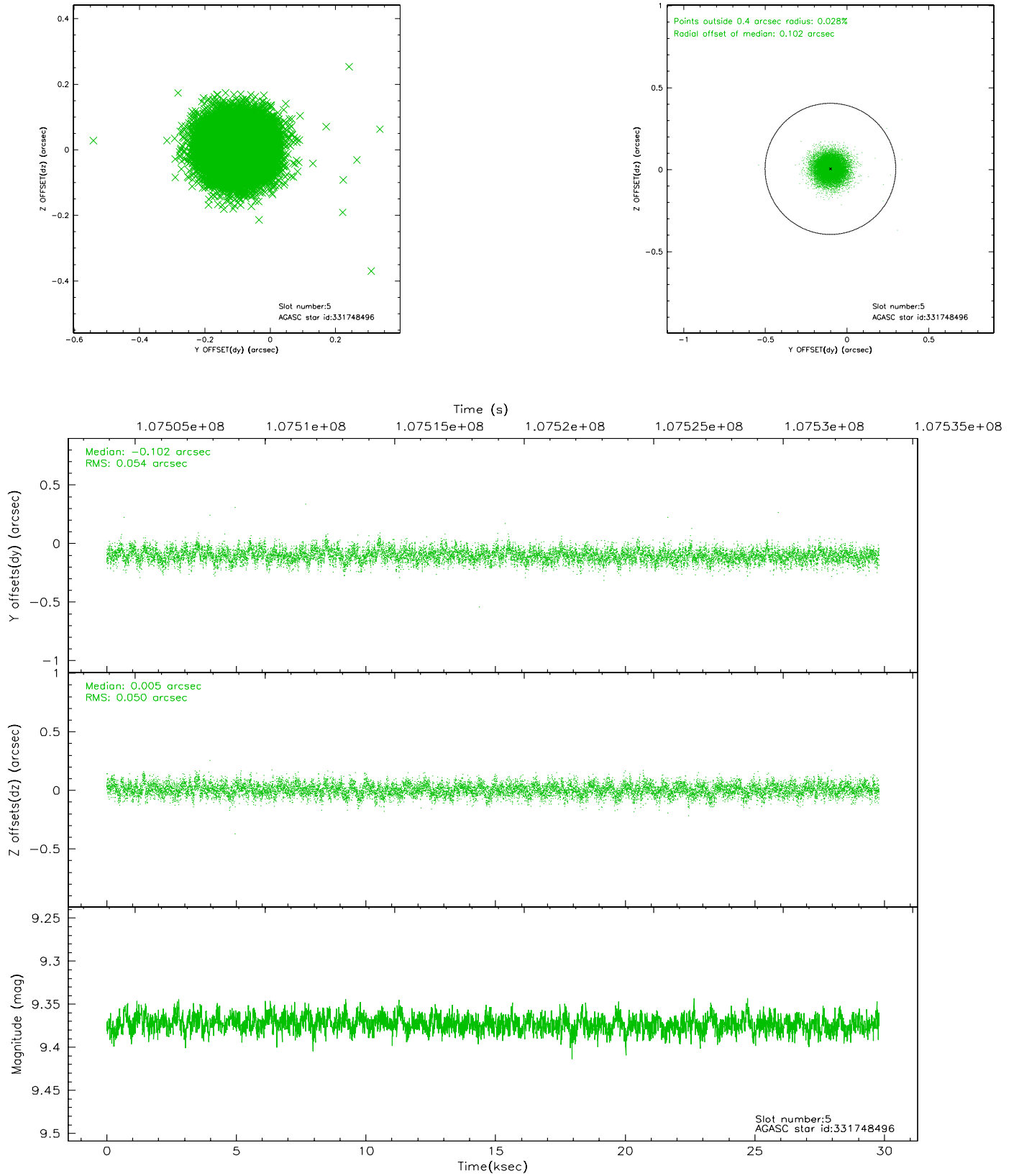
2.4.1 Slot 3



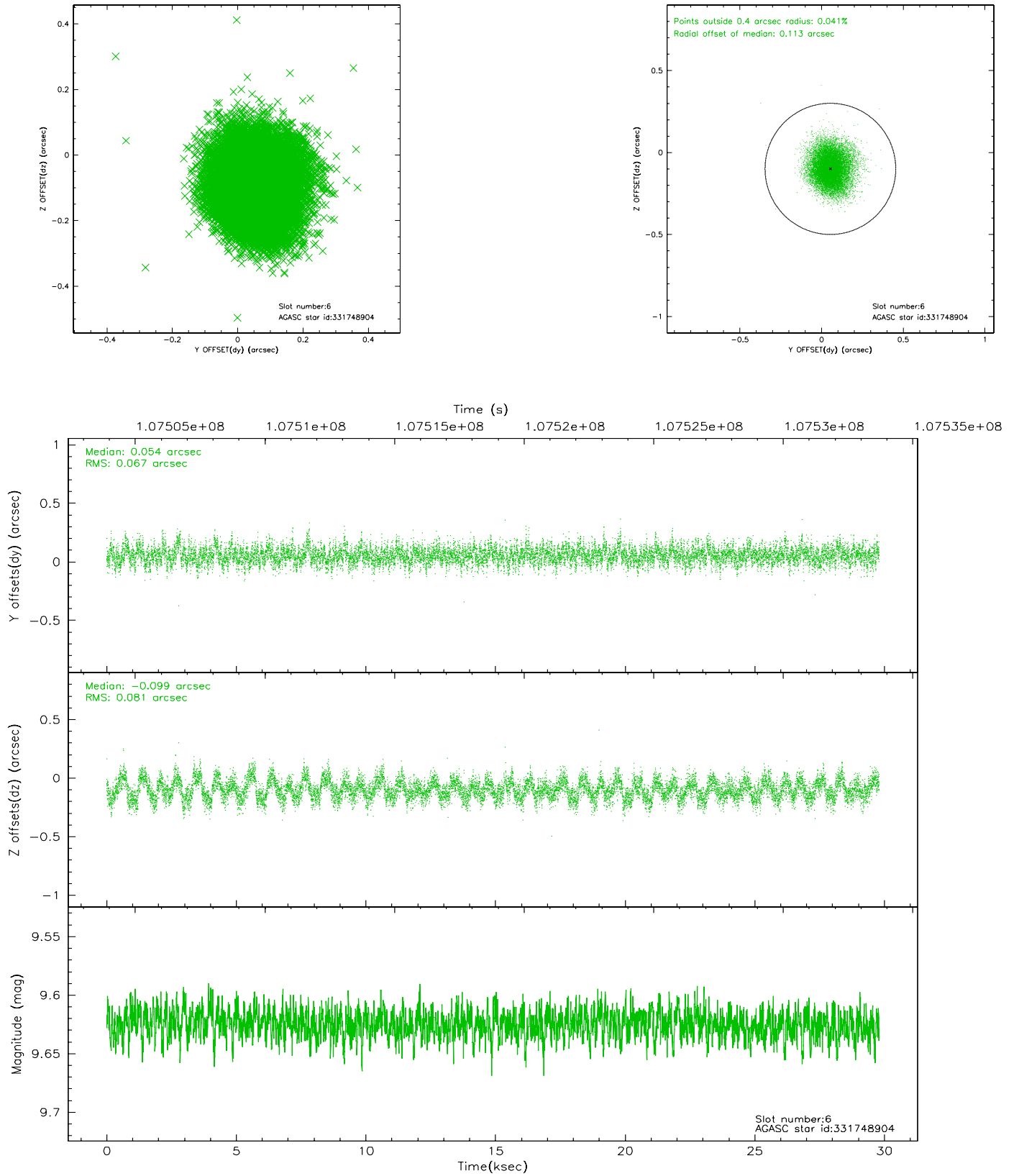
2.4.2 Slot 4



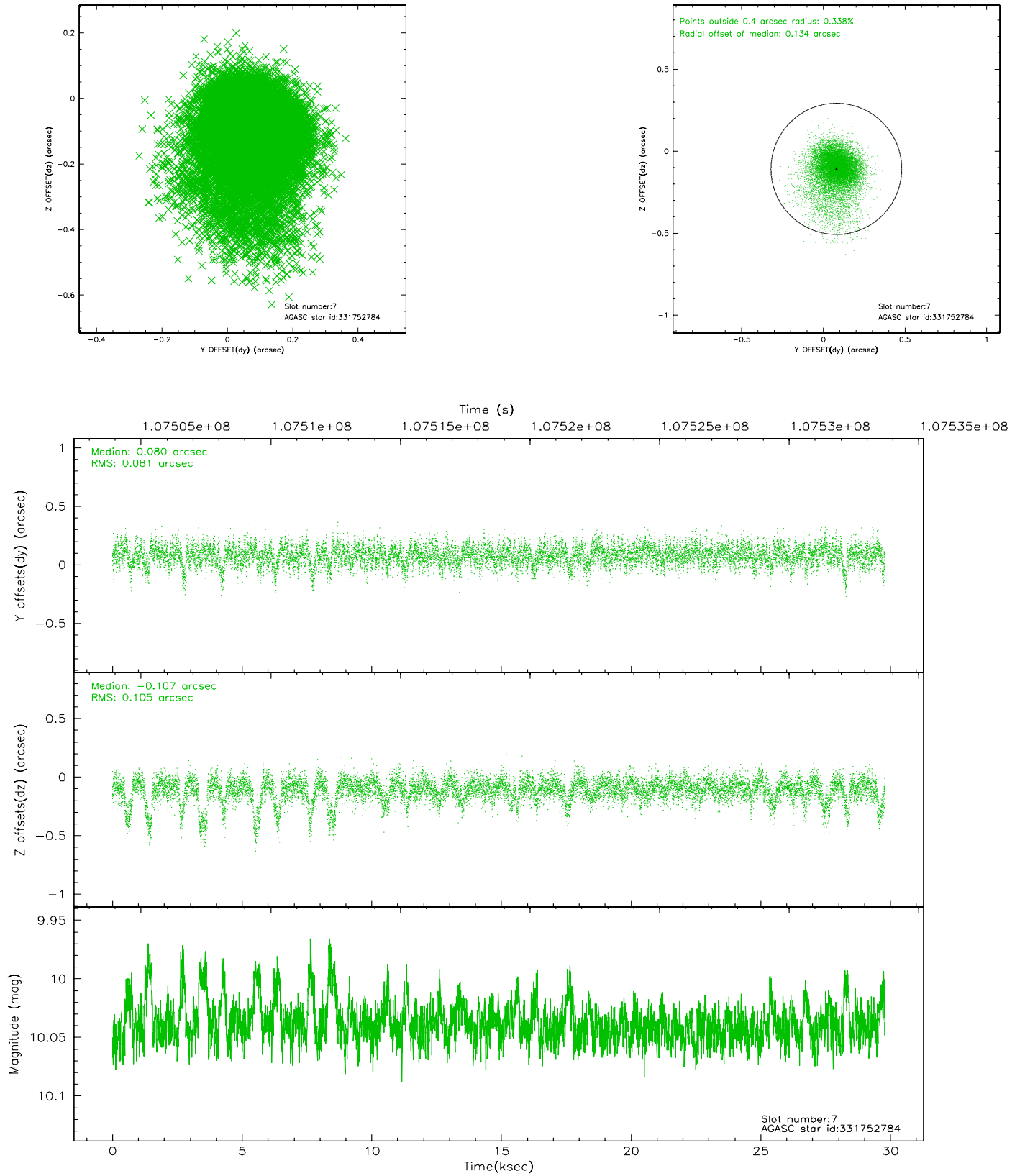
2.4.3 Slot 5



2.4.4 Slot 6

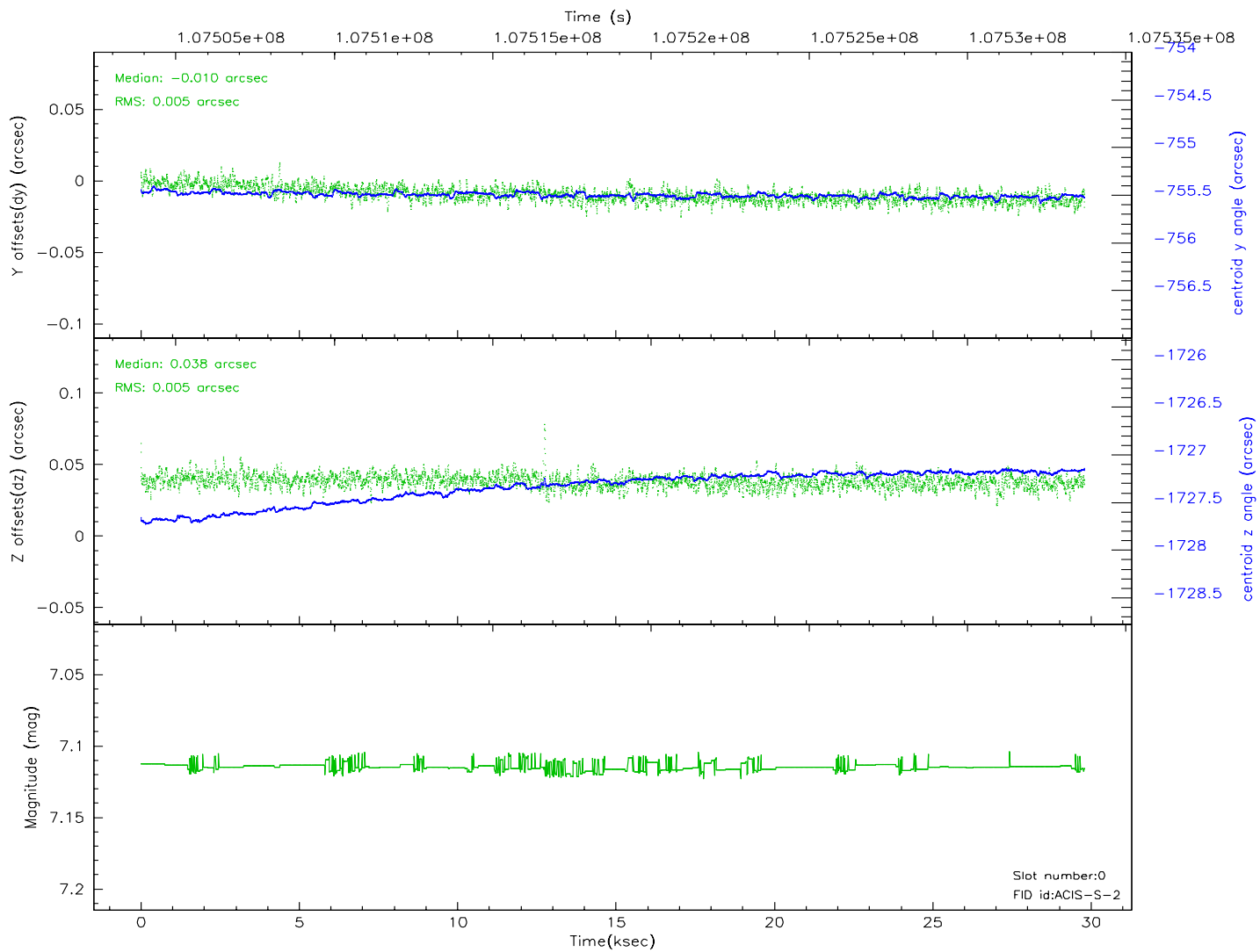
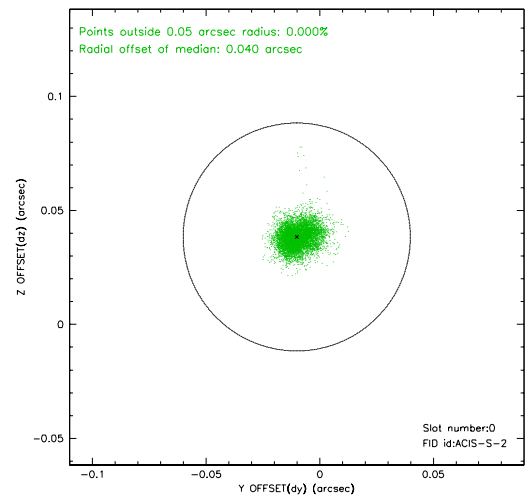
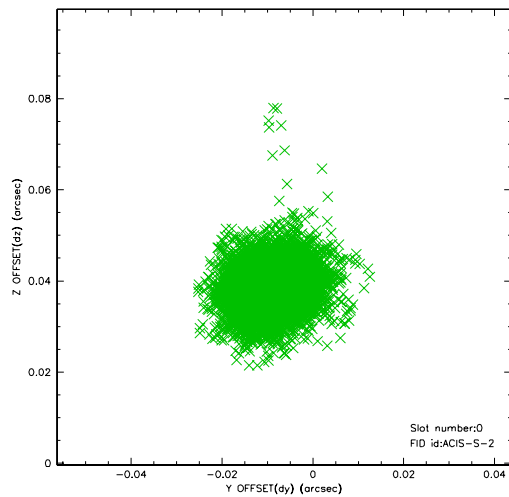


2.4.5 Slot 7

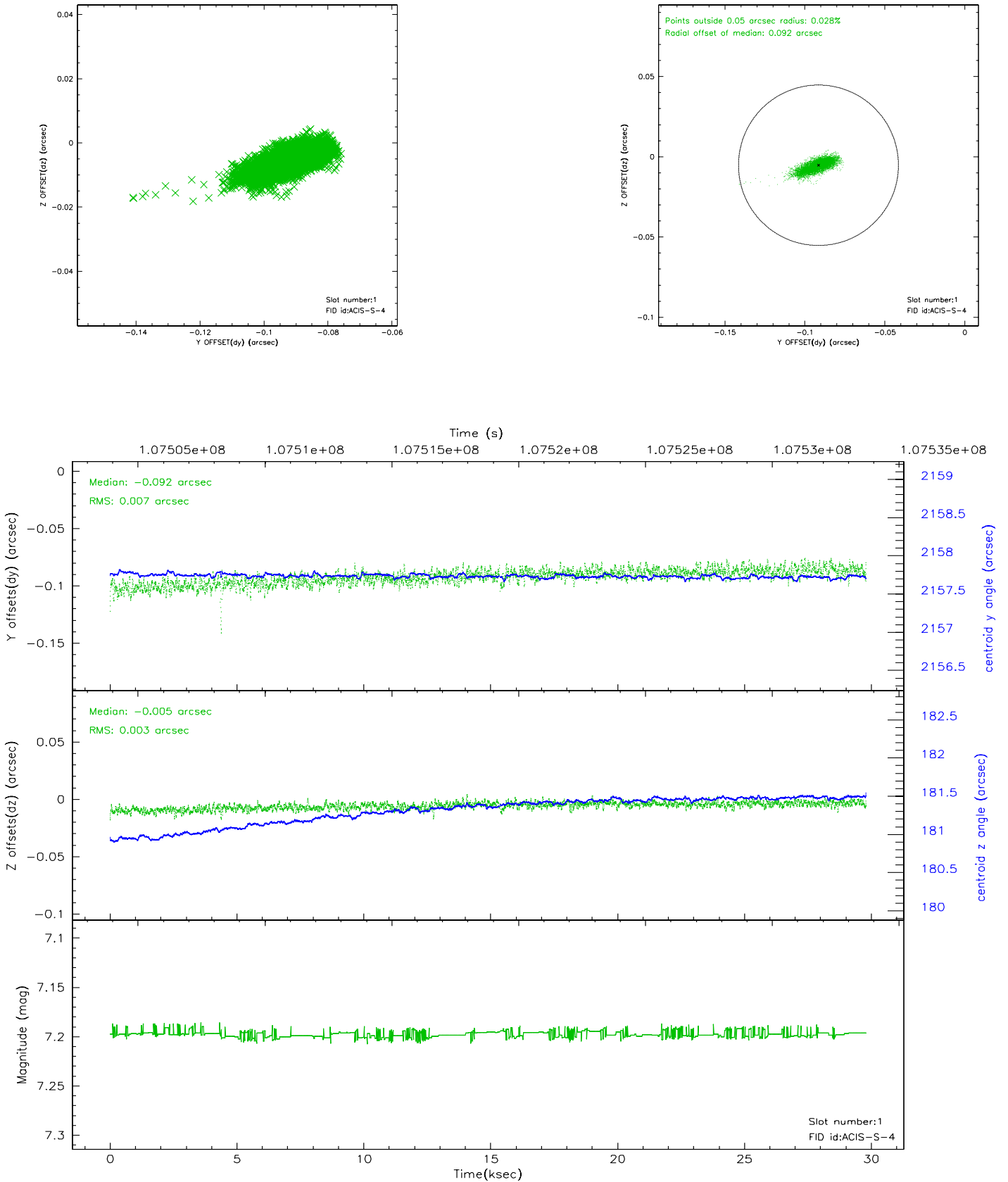


2.5 FID Slots

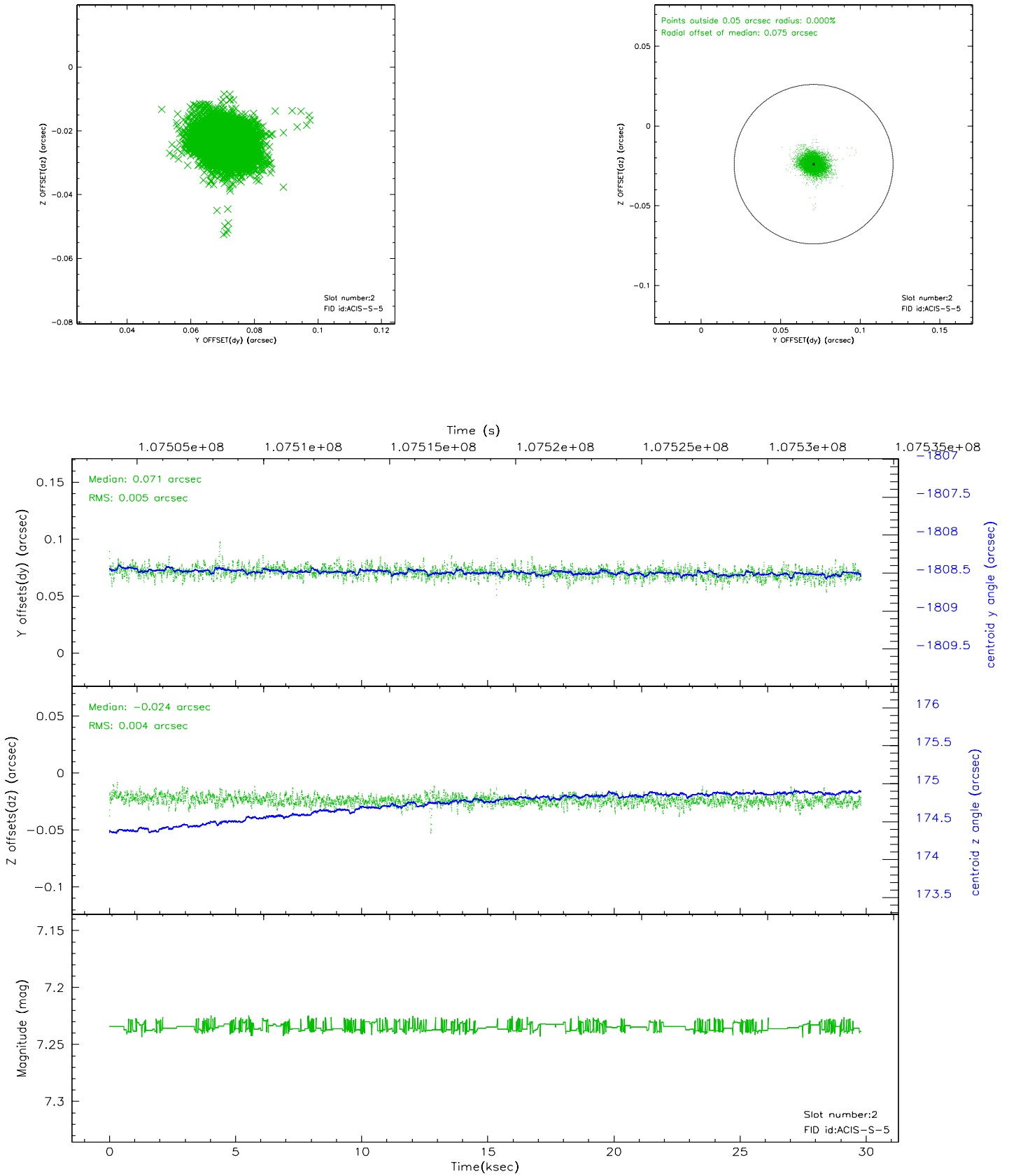
2.5.1 Slot 0



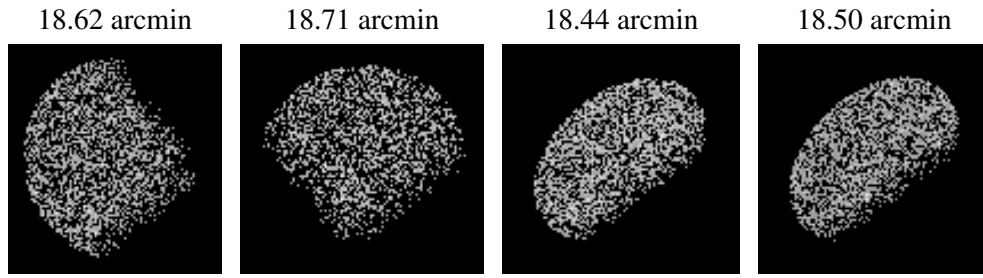
2.5.2 Slot 1



2.5.3 Slot 2



3 Point Sources



A Summary

A.1 Status

V&V Scientist	Jen Lauer
V&V Date (YYYY-MM-DD)	2006.11.24
V&V Edition	1
V&V Disposition and Status	OK
V&V Charge Time	28.912

A.2 Comments