

V&V Reference Report

L2 ASCDS Version : 7.6.9

Observation 2037 - L2 Version 001
Chandra X-Ray Center

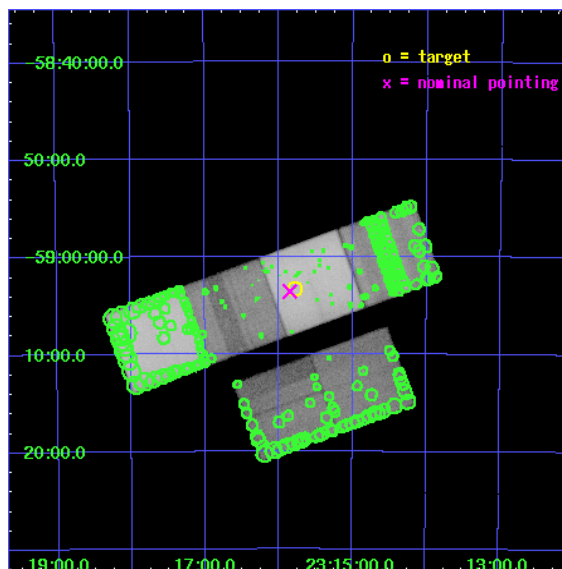
L2 Processing Date : Jan 5 2007

Contents

1	Front	2
2	OBI	3
2.1	OBI	3
2.1.1	Images	3
2.1.2	Bias	3
2.1.3	Parameters	4
2.1.4	Events	4
2.2	Compared Parameters	5
2.3	Aspect	6
2.4	Star Slots	9
2.4.1	Slot 3	9
2.4.2	Slot 4	10
2.4.3	Slot 5	11
2.4.4	Slot 6	12
2.4.5	Slot 7	13
2.5	FID Slots	14
2.5.1	Slot 0	14
2.5.2	Slot 1	15
2.5.3	Slot 2	16
3	Point Sources	17
A	Summary	18
A.1	Status	18
A.2	Comments	18

1 Front

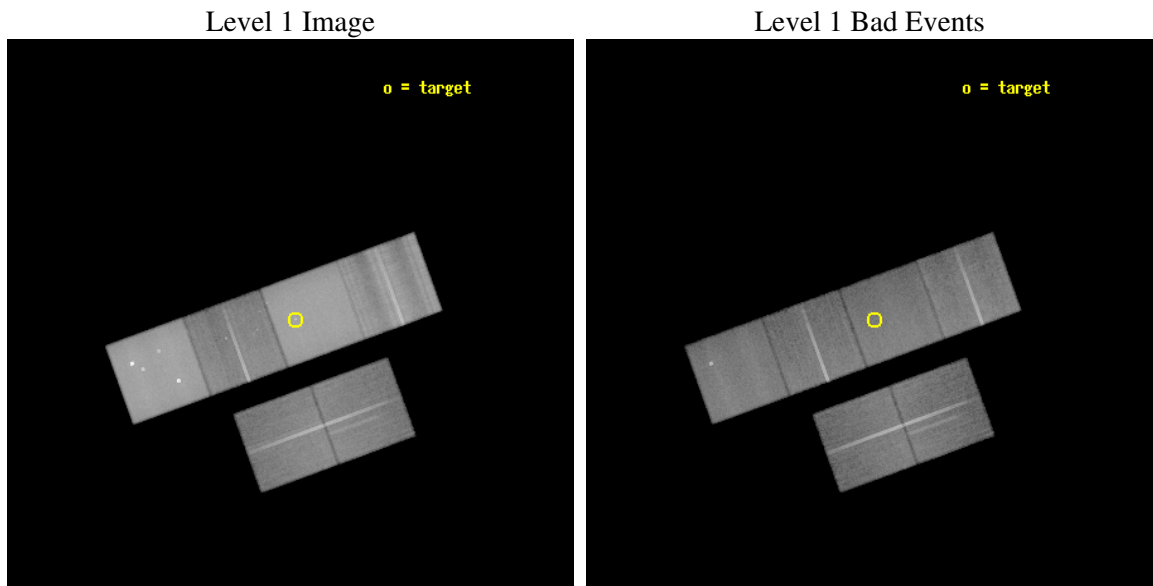
seq_num	600171
obs_id	2037
title	THE X-RAY PROPERTIES OF ULTRALUMINOUS GALAXIES: COSMOLOGICAL IMPLICATIONS
observer	Dr. Tim Heckman
object	IRAS 23128-5919
dtcycle	0
cycle	P
ra_targ	348.945833
dec_targ	-59.054694
ra_nom	348.9622124039
dec_nom	-59.059602833467
roll_nom	339.98382487236
revision	2
ontime	49942.318116009
livetime	49309.918412371
ontime2	49942.318096086
ontime3	49945.559086263
ontime5	49945.559106171
ontime6	49945.559086263
ontime7	49942.318116009
ontime8	49942.318096071
l2events	1505741



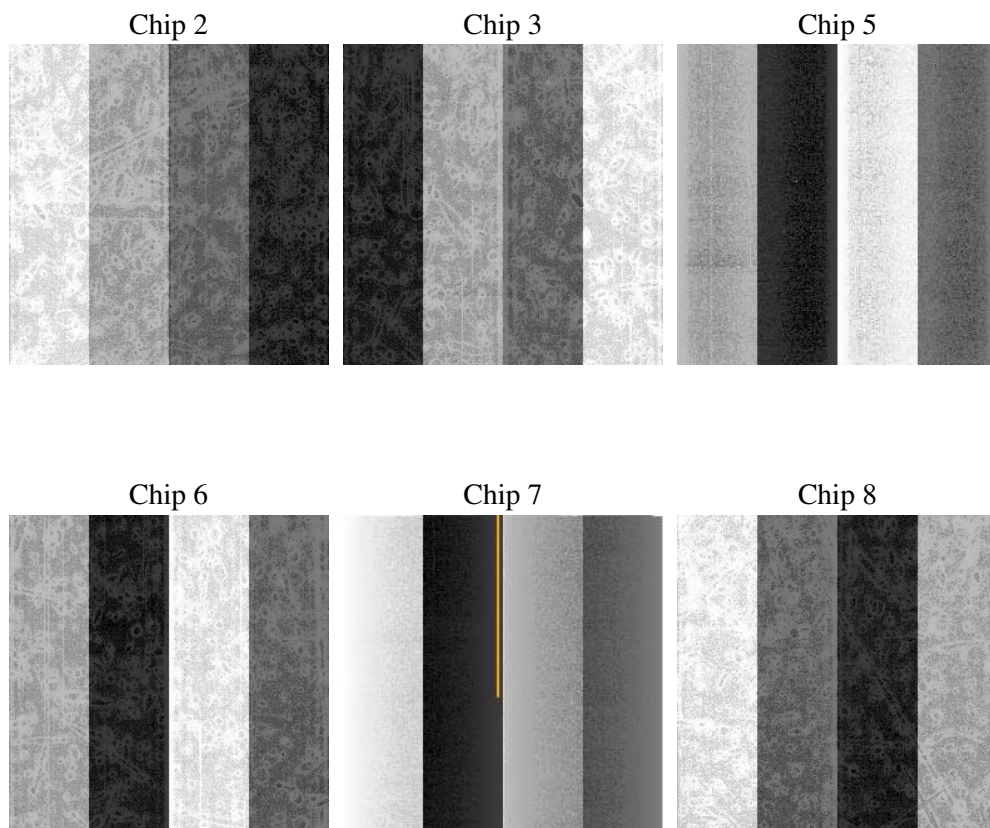
2 OBI

2.1 OBI

2.1.1 Images



2.1.2 Bias



2.1.3 Parameters

obi_num	0
ascdsver	7.6.9
caldsver	3.2.4
date	2007-01-05T10:57:18
revision	2

sched_exp_time	50000.000000
ontime	49947.054041743
ontime2	49947.05402182
ontime3	49950.295011997
ontime5	49950.295031905
ontime6	49950.295011997
ontime7	49947.054041743
ontime8	49947.054021806
l1events	3464818

2.1.4 Events

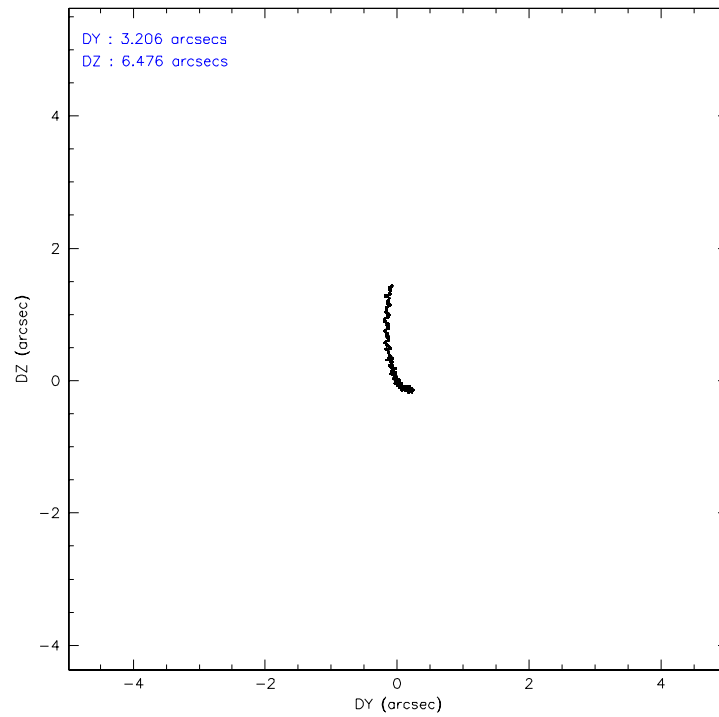
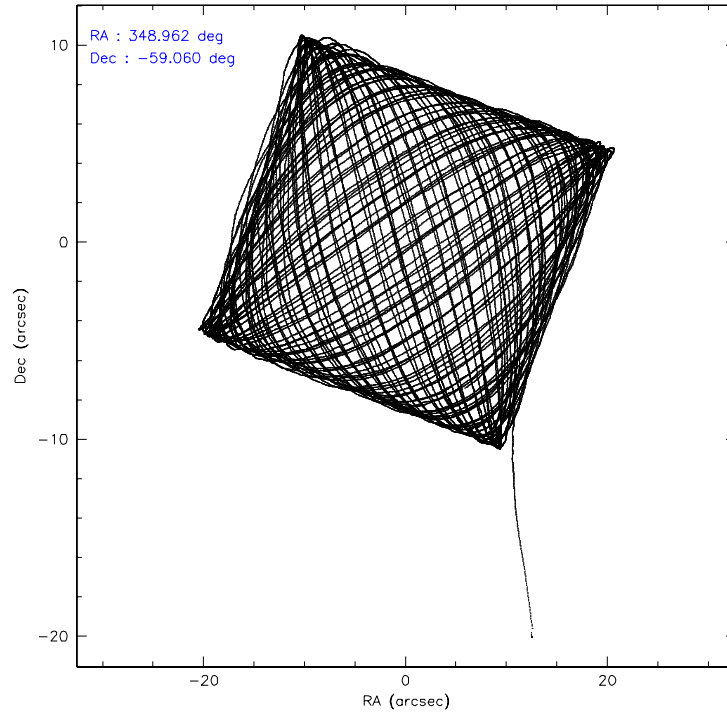
	ccd 2	ccd 3	ccd 5	ccd 6	ccd 7	ccd 8
level 1 events	390133	376594	849671	421474	793344	633602
rejected events	287717	272903	298504	286852	281686	323637
rejected %	73%	72%	35%	68%	35%	51%

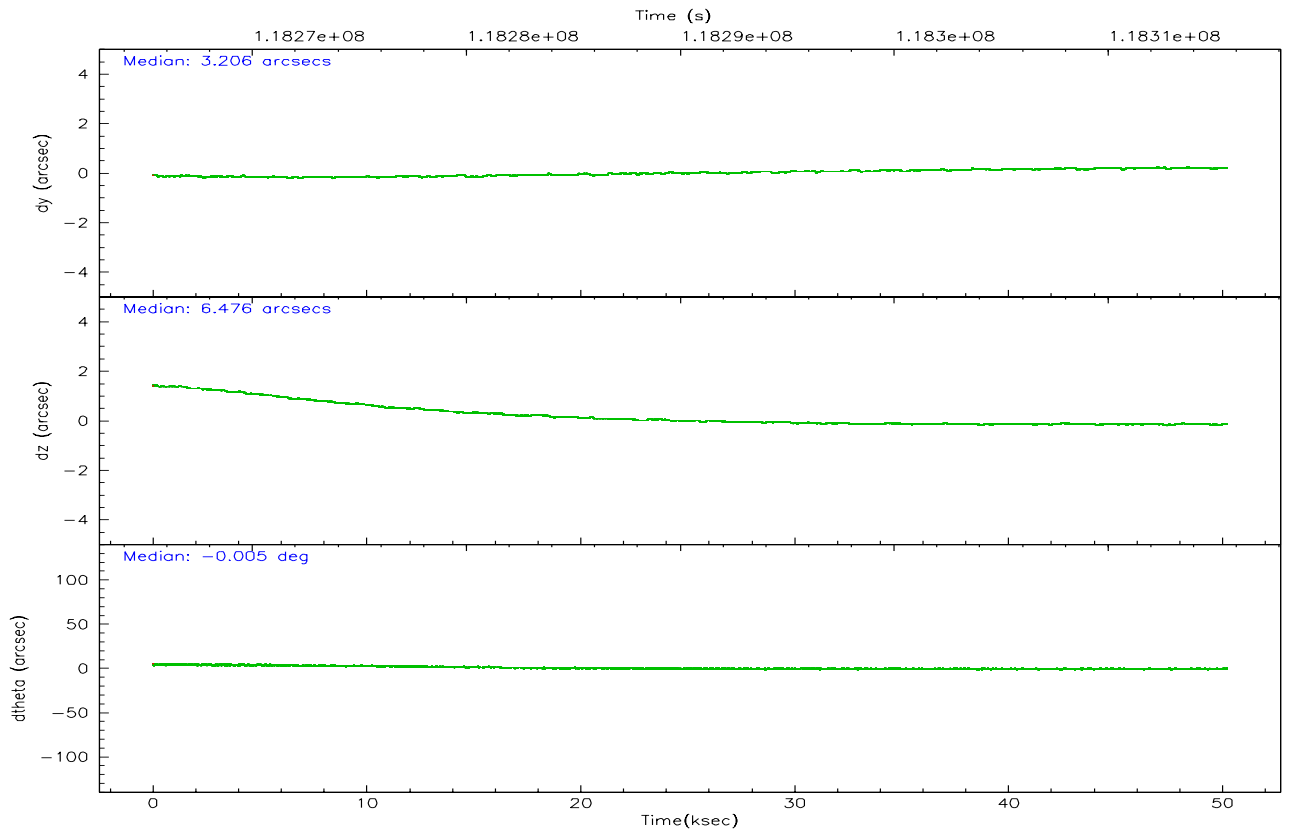
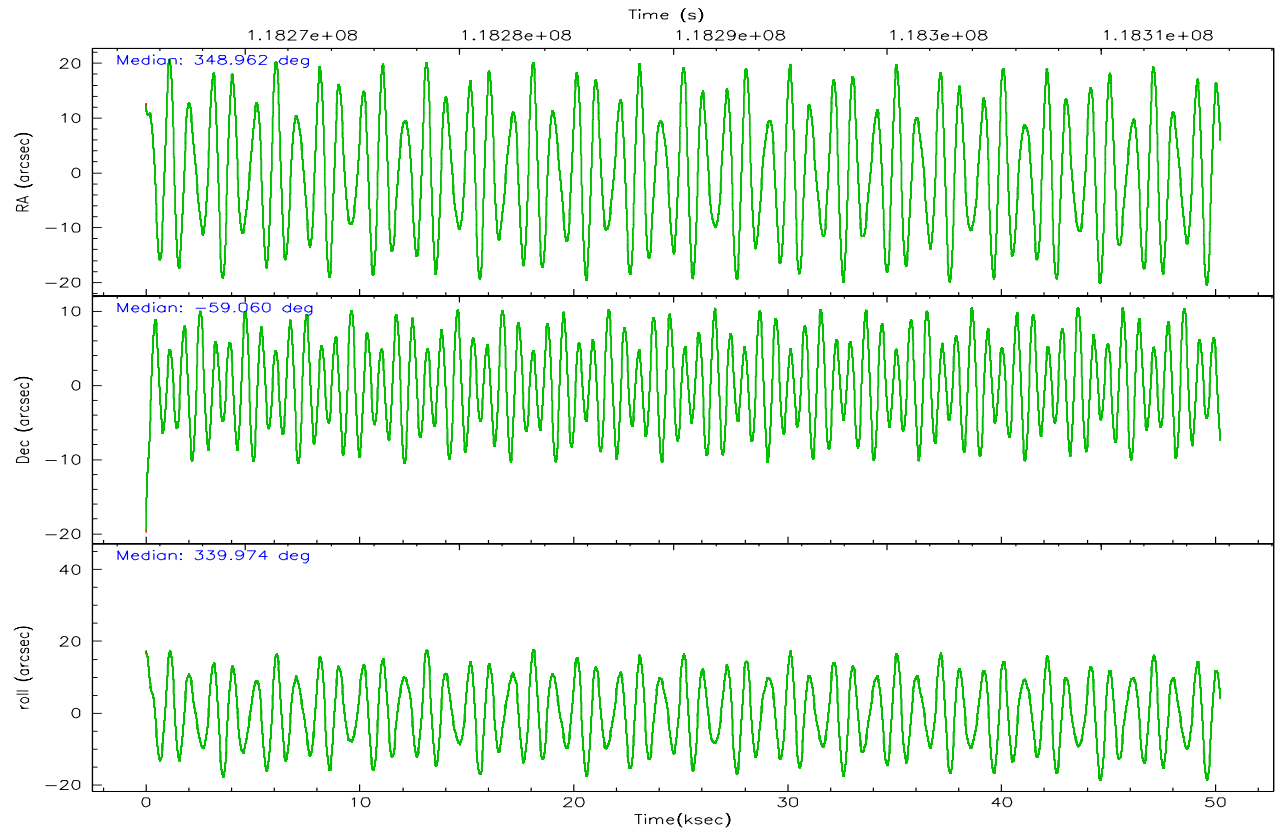
	ccd 2	ccd 3	ccd 5	ccd 6	ccd 7	ccd 8
grade 0 events	55239	53674	68851	79940	45930	139976
	14%	14%	8%	18%	5%	22%
grade 1 events	280	243	1366	346	289	919
	0%	0%	0%	0%	0%	0%
grade 2 events	23133	26054	179480	29386	109715	49876
	5%	6%	21%	6%	13%	7%
grade 3 events	4397	4745	18690	4975	28925	39163
	1%	1%	2%	1%	3%	6%
grade 4 events	5212	4776	18429	5115	28126	34825
	1%	1%	2%	1%	3%	5%
grade 5 events	10381	11099	25359	12511	27909	17176
	2%	2%	2%	2%	3%	2%
grade 6 events	14451	14453	265846	15225	299131	46171
	3%	3%	31%	3%	37%	7%
grade 7 events	277040	261550	271650	273976	253319	305496
	71%	69%	31%	65%	31%	48%

2.2 Compared Parameters

Parameter	Planned	Actual	Parameter	Planned	Actual
Instrument	ACIS	ACIS	Obspar format version number	6	6
Detector	ACIS-235678	ACIS-235678	Obspar file type	PREDICTED	ACTUAL
Grating	NONE	NONE	Obspar update status	NONE	UPDATED
Data mode	FAINT	FAINT	Number of optional ACIS chips dropped	0	0
Observation mode	POINTING	POINTING	On-chip summing requested	N	N
Pointing RA	348.910064	348.9622124039012	Subarray requested	NONE	NONE
Pointing Dec	-59.064619	-59.05960283346723	Alternating exposures requested	N	N
Pointing Roll	339.782473	339.9838248723559	Primary exposure time	0.000000	3.2
SIM focus pos (mm)	-0.684267	-0.6828225247311905			
SIM defocus (mm)	0	0.001444936568705701			
SIM translation stage pos (mm)	-190.132523	-190.1400660498719			
SIM translation stage offset (mm)	0	0.00754346686406393			
Observation start time	118265569.184000	118264600.54403			
Observation start date	2001-09-30T19:31:45	2001-09-30T19:16:40			
Observation end time	118315569.184000	118316394.82109			
Observation end date	2001-10-01T09:25:05	2001-10-01T09:39:54			
Read mode	TIMED	TIMED			

2.3 Aspect



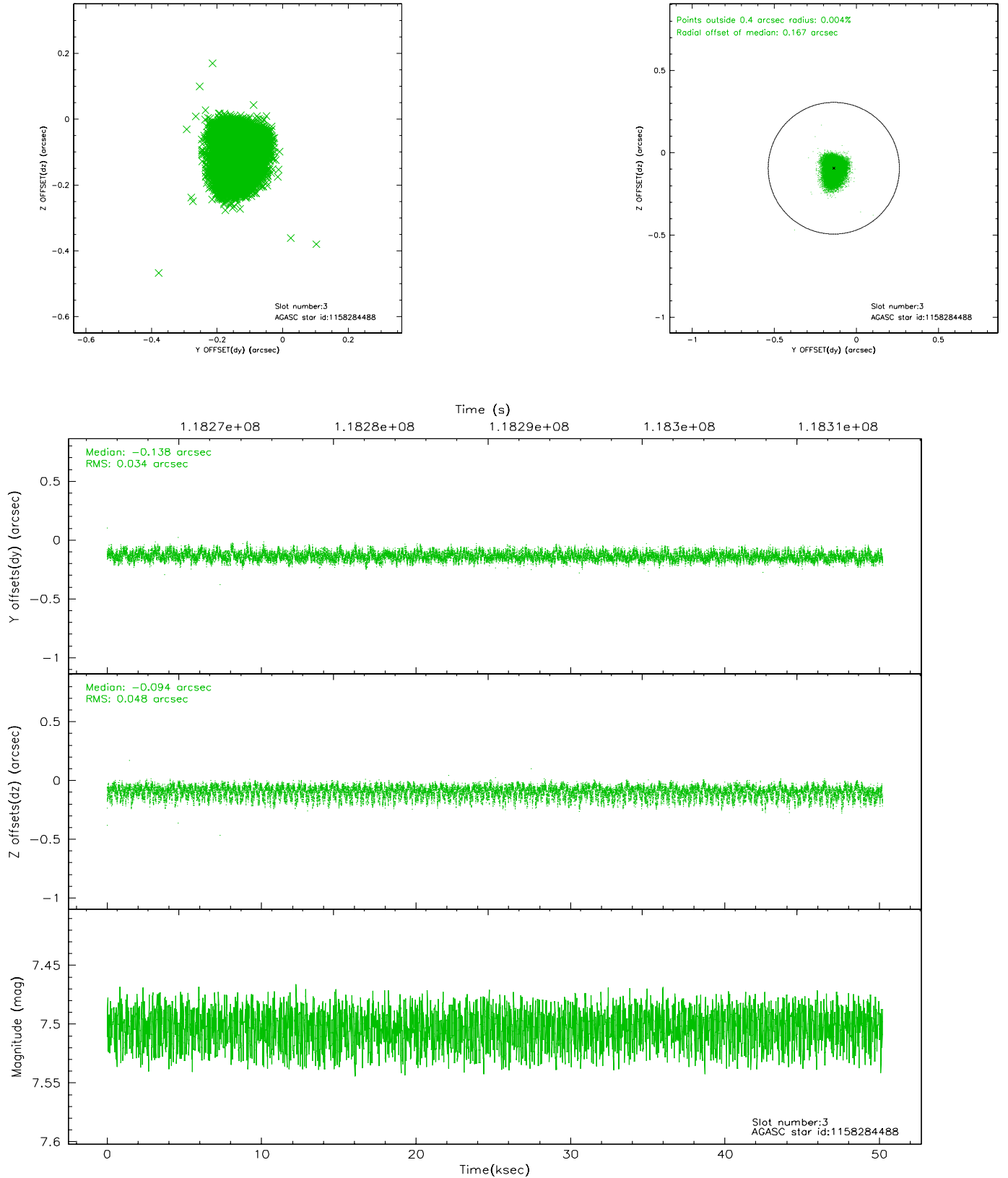


Slot Statistics

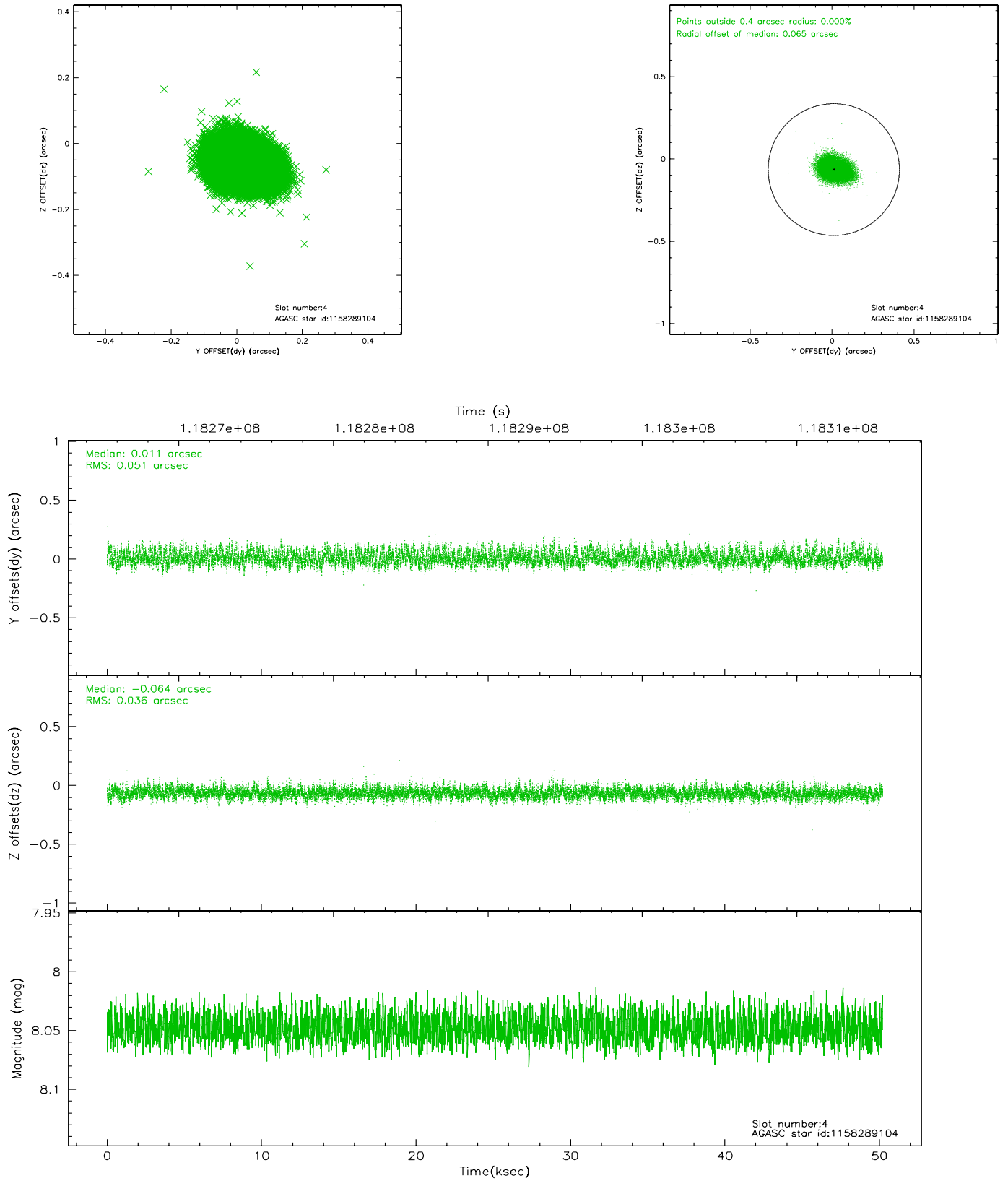
slot	status	id	mag	n_pts	med_dy	med_dz	dr1	dr2	ra	dec	mean_y	mean_z
0	FID	ACIS-S-2	7.11	12244	-0.002	0.031	0.013	0.025	0.000000	0.000000	-755.84	-1727.84
1	FID	ACIS-S-4	7.20	12243	-0.077	-0.008	0.018	0.028	0.000000	0.000000	2157.34	180.66
2	FID	ACIS-S-5	7.24	12244	0.048	-0.015	0.010	0.017	0.000000	0.000000	-1808.69	174.25
3	GUIDE	1158284488	7.50	24488	-0.138	-0.094	0.062	0.102	347.565532	-59.369633	-1925.22	-1906.14
4	GUIDE	1158289104	8.05	24488	0.011	-0.064	0.067	0.108	349.042349	-59.780717	1116.72	-2336.32
5	GUIDE	1158289080	8.54	24483	-0.095	-0.014	0.081	0.124	349.709964	-58.631481	871.06	1973.11
6	GUIDE	1158283552	8.83	24489	0.002	0.031	0.086	0.136	348.601588	-58.521149	-1219.54	1634.46
7	GUIDE	1158289992	10.34	24475	0.216	0.141	0.152	0.254	350.393328	-58.836217	2319.72	1698.60

2.4 Star Slots

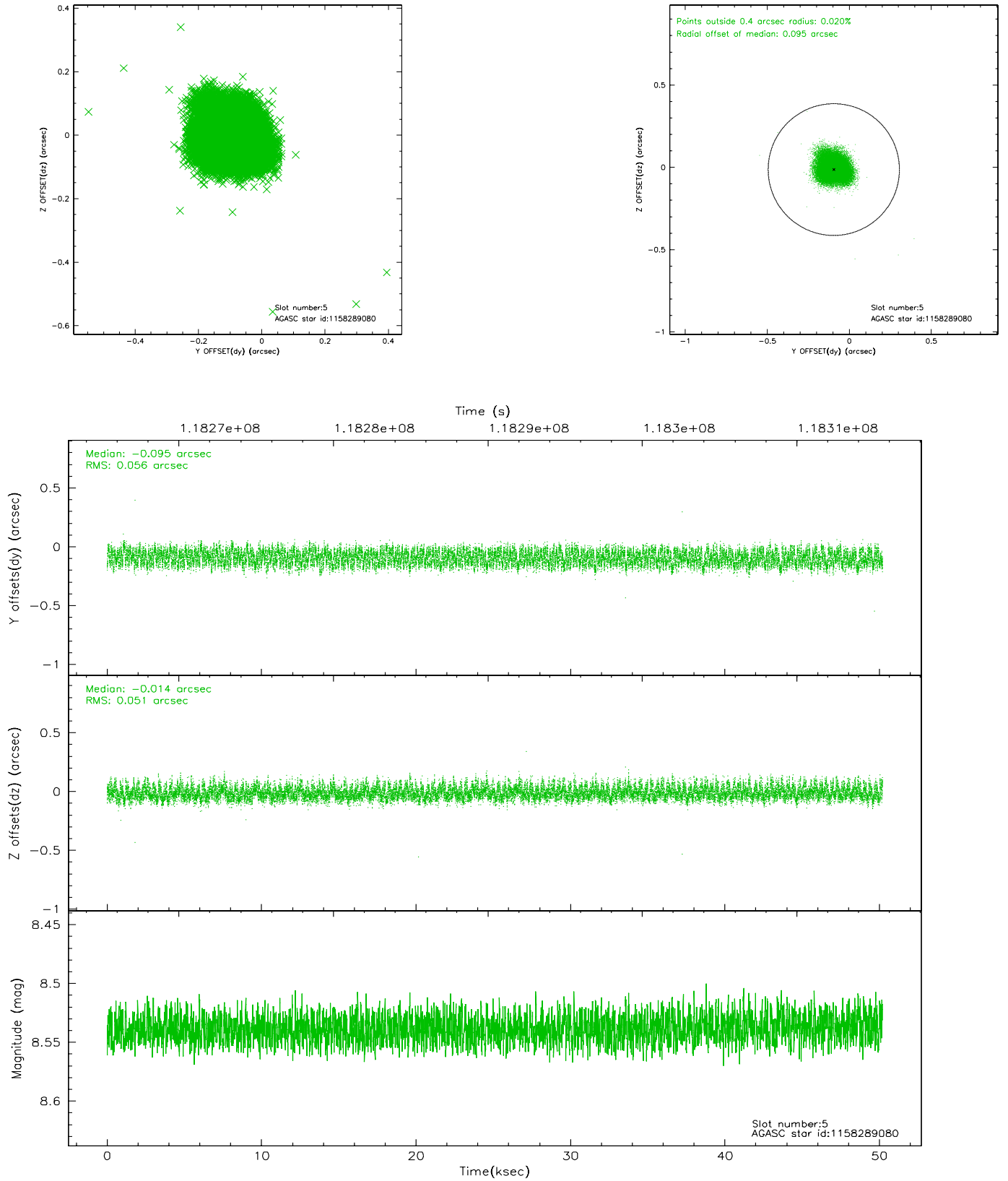
2.4.1 Slot 3



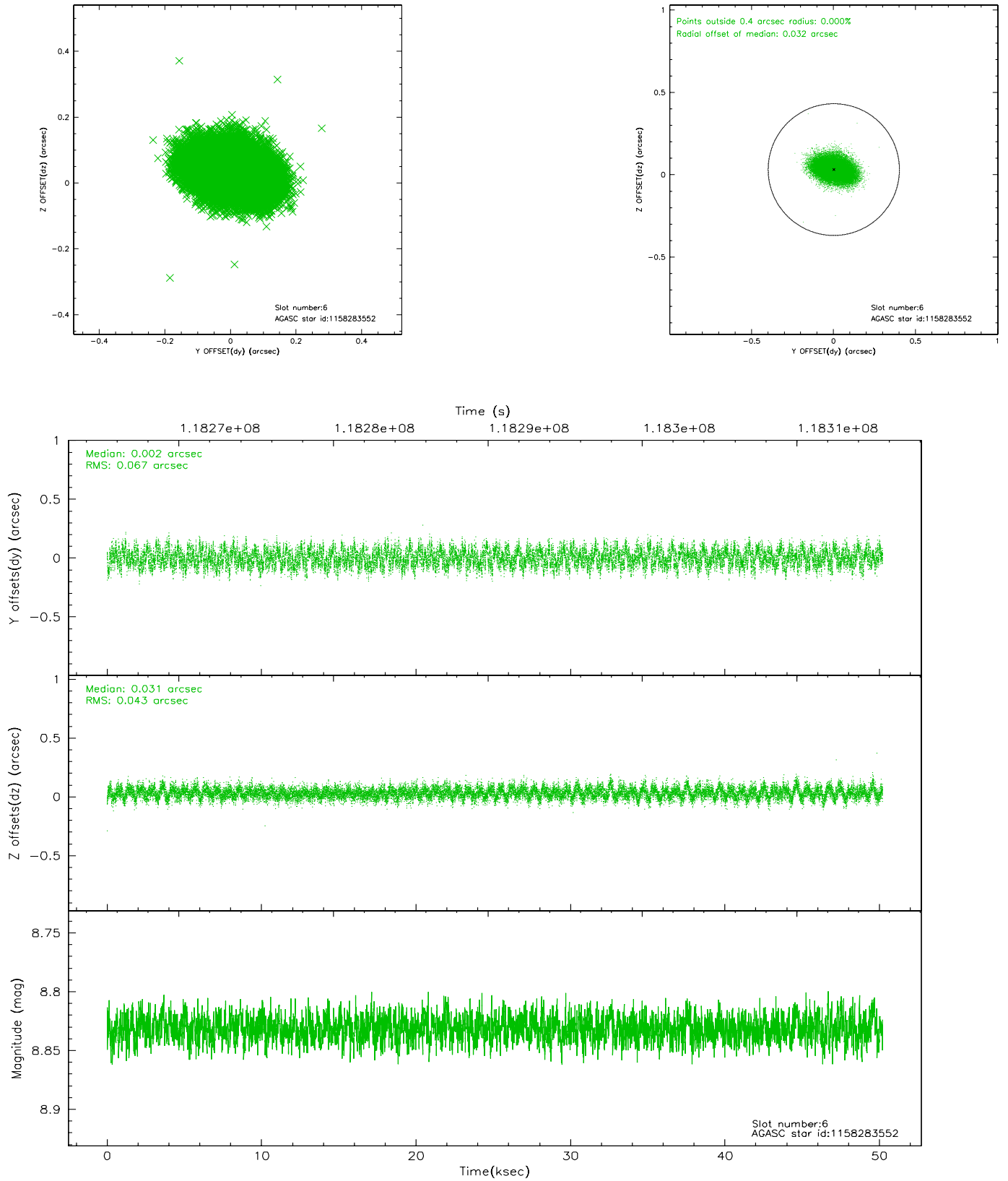
2.4.2 Slot 4



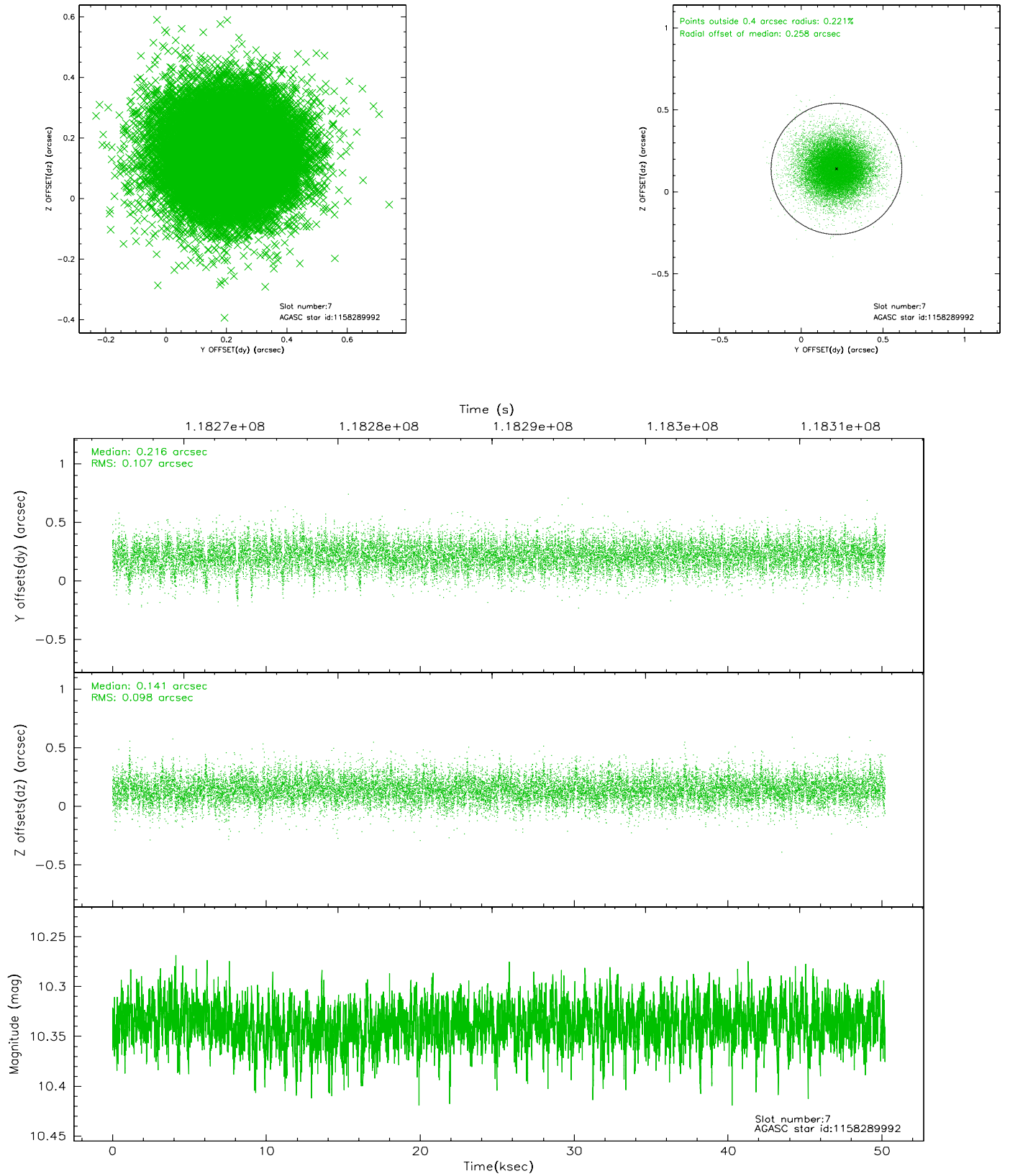
2.4.3 Slot 5



2.4.4 Slot 6

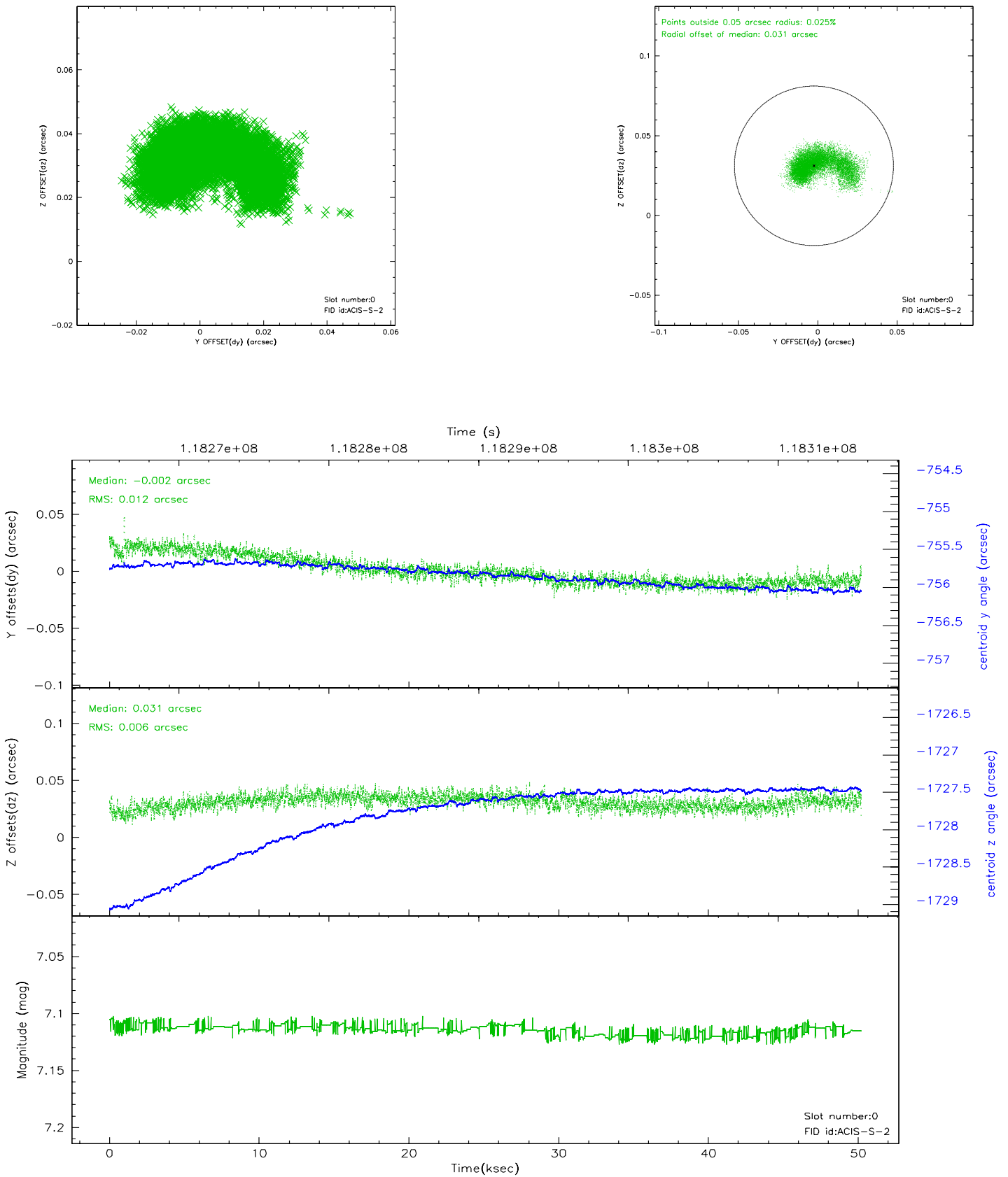


2.4.5 Slot 7

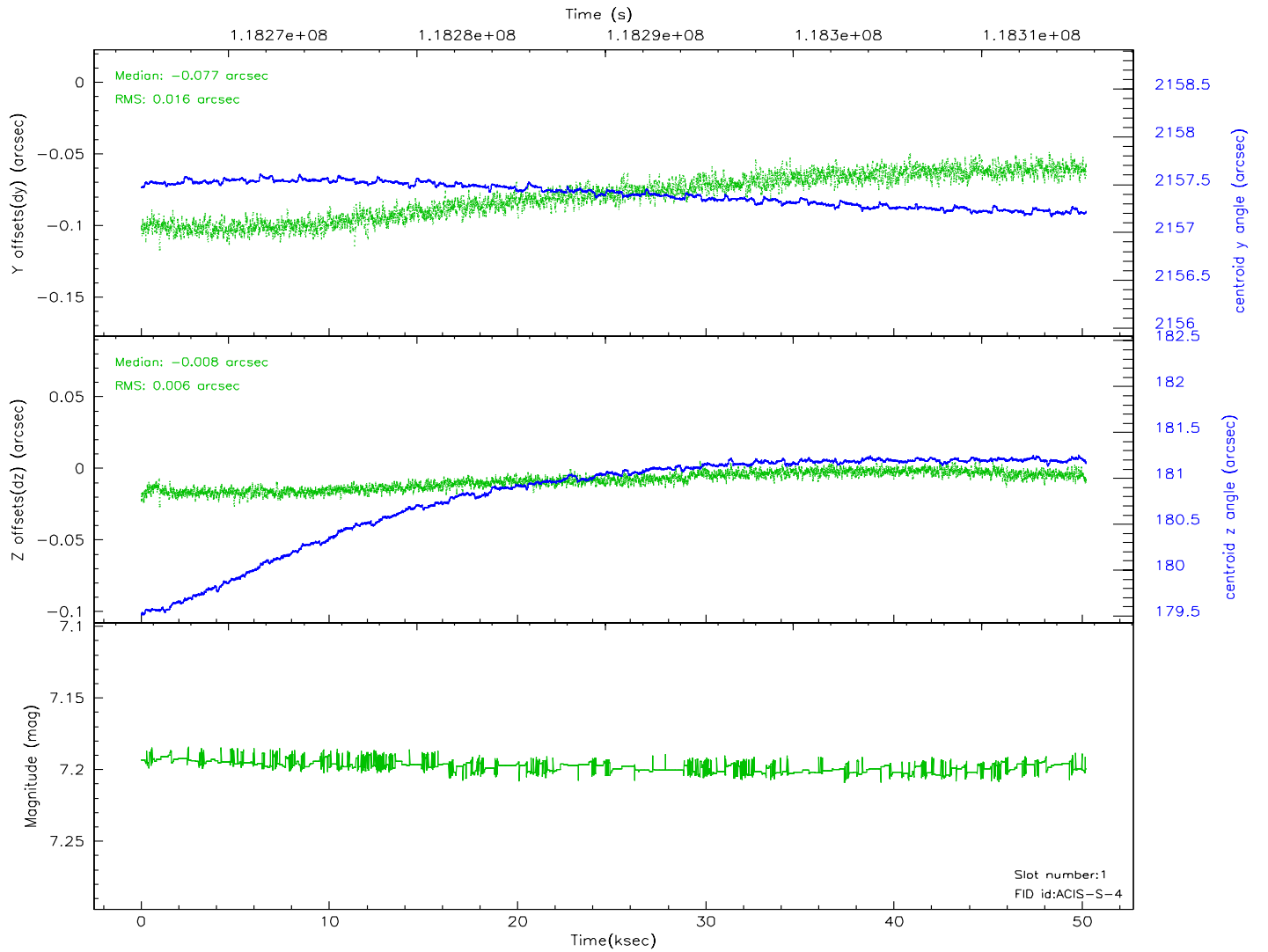
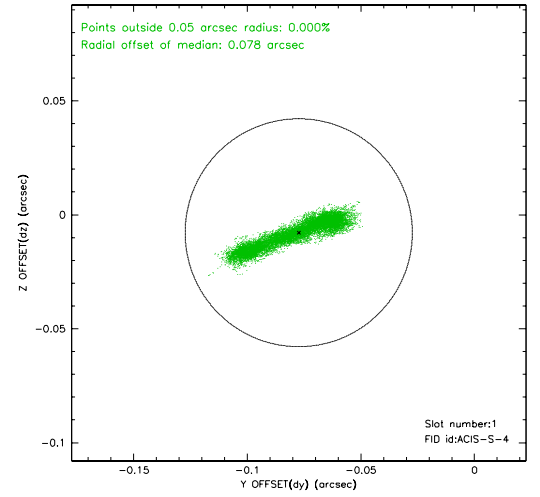
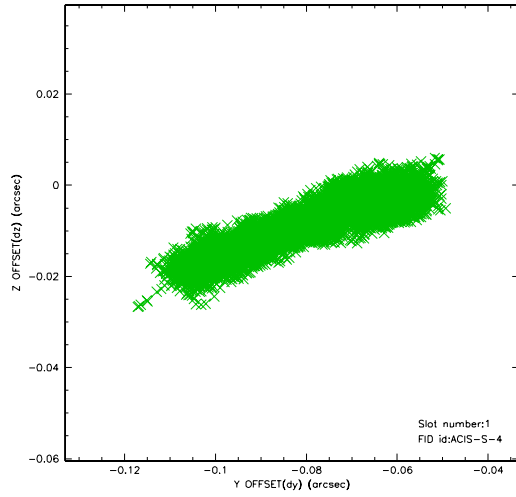


2.5 FID Slots

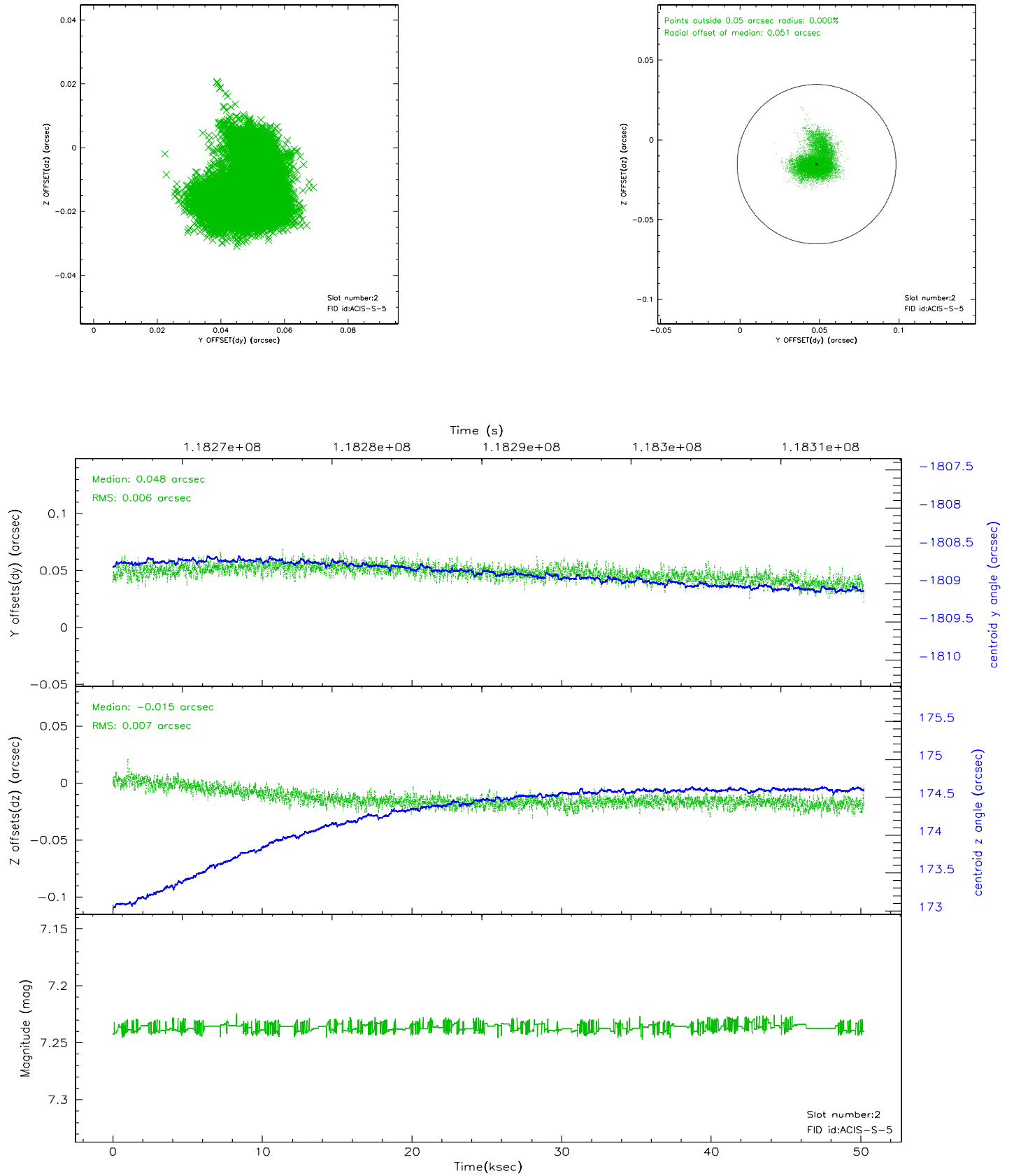
2.5.1 Slot 0



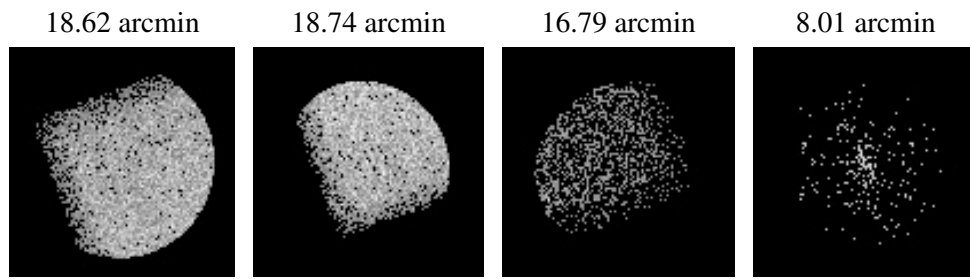
2.5.2 Slot 1



2.5.3 Slot 2



3 Point Sources



A Summary

A.1 Status

V&V Scientist	Beth Sundheim
V&V Date (YYYY-MM-DD)	2007.01.05
V&V Edition	1
V&V Disposition and Status	OK
V&V Charge Time	49.945

A.2 Comments