

V&V Reference Report

L2 ASCDS Version : 7.6.9

Observation 2033 - L2 Version 001
Chandra X-Ray Center

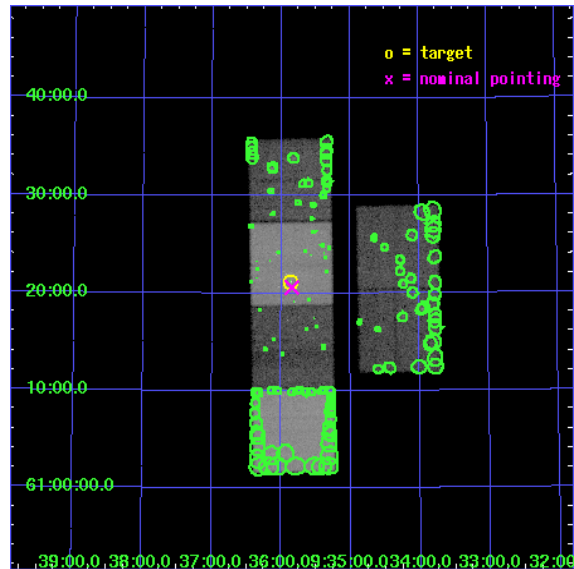
L2 Processing Date : Nov 23 2006

Contents

1	Front	2
2	OBI	3
2.1	OBI	3
2.1.1	Images	3
2.1.2	Bias	3
2.1.3	Parameters	4
2.1.4	Events	4
2.2	Compared Parameters	5
2.3	Aspect	6
2.4	Star Slots	9
2.4.1	Slot 3	9
2.4.2	Slot 4	10
2.4.3	Slot 5	11
2.4.4	Slot 6	12
2.4.5	Slot 7	13
2.5	FID Slots	14
2.5.1	Slot 0	14
2.5.2	Slot 1	15
2.5.3	Slot 2	16
3	Point Sources	17
A	Summary	18
A.1	Status	18
A.2	Comments	18

1 Front

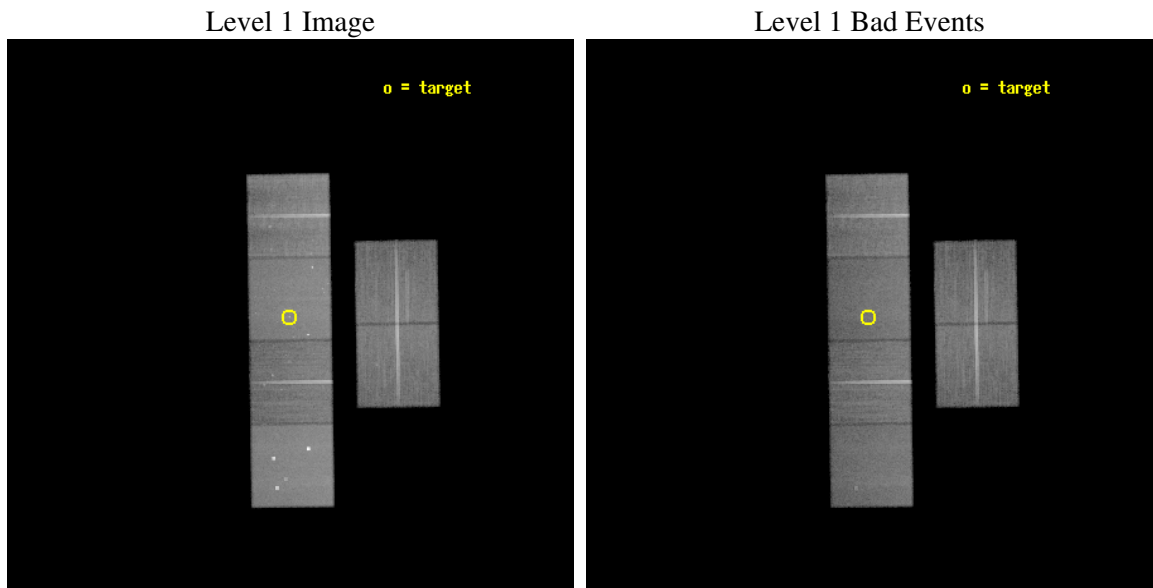
seq_num	600167
obs_id	2033
title	THE X-RAY PROPERTIES OF ULTRALUMINOUS GALAXIES: COSMOLOGICAL IMPLICATIONS
observer	Dr. Tim Heckman
object	UGC 05101
dtcycle	0
cycle	P
ra_targ	143.965417
dec_targ	61.353139
ra_nom	143.96146205796
dec_nom	61.343532529514
roll_nom	269.11574194932
revision	2
ontime	49952.000046521
livetime	49319.477744449
ontime2	49948.759066358
ontime3	49952.000046521
ontime5	49952.000046521
ontime6	49952.000046521
ontime7	49952.000046521
ontime8	49952.000046521
l2events	454662



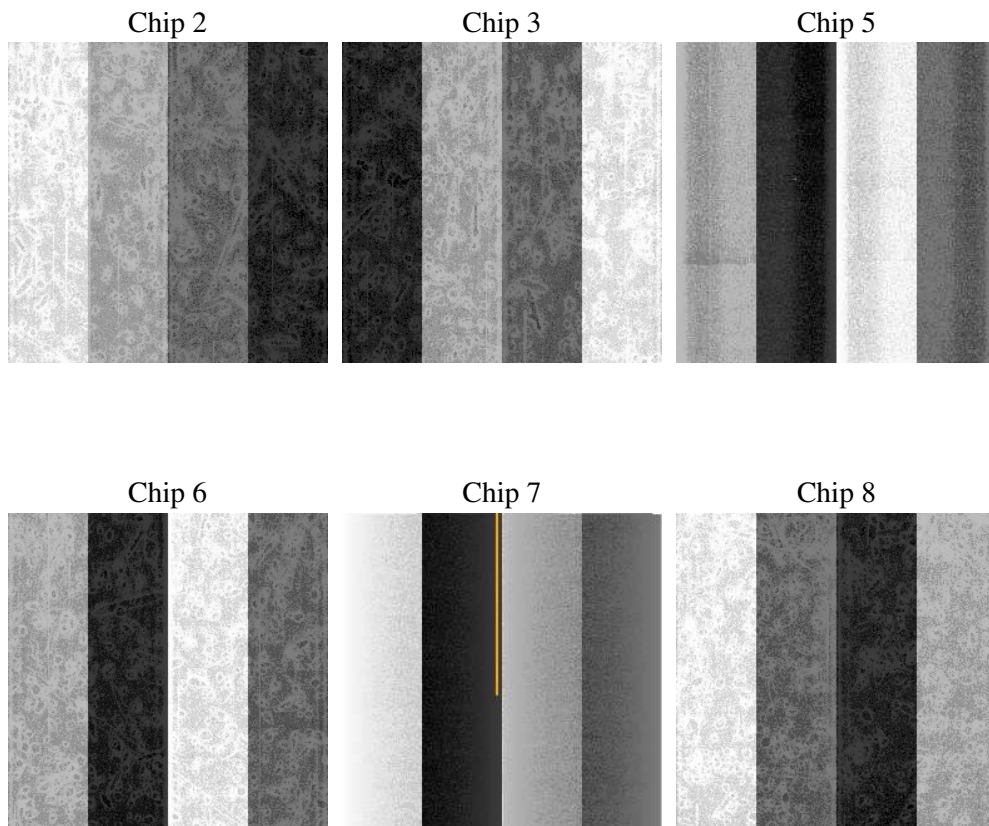
2 OBI

2.1 OBI

2.1.1 Images



2.1.2 Bias



2.1.3 Parameters

obi_num	0
ascdsver	7.6.9
caldsver	3.2.4
date	2006-11-23T06:15:36
revision	2

sched_exp_time	50000.000000
ontime	49956.731705517
ontime2	49953.490695417
ontime3	49956.73167558
ontime5	49956.73167558
ontime6	49956.73167558
ontime7	49956.731705517
ontime8	49956.73167558
l1events	2125519

2.1.4 Events

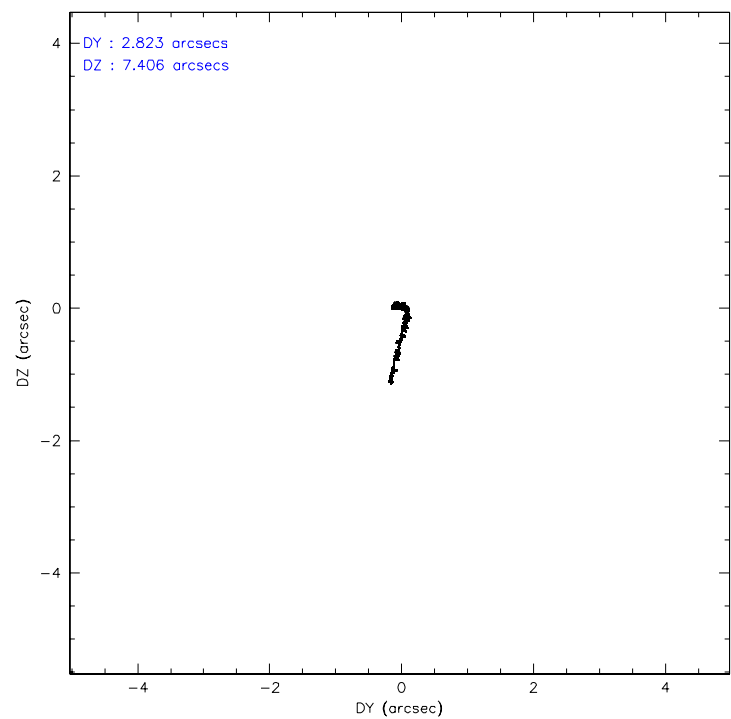
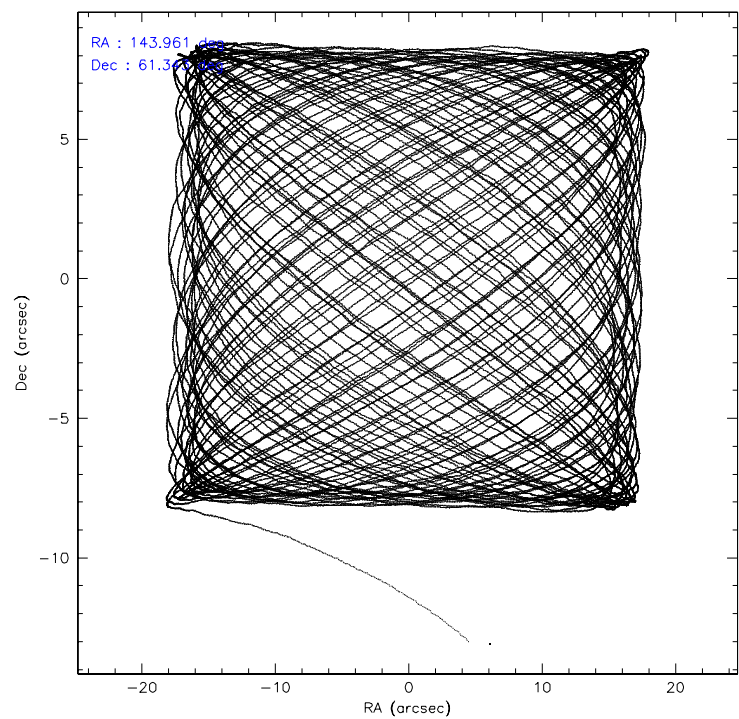
	ccd 2	ccd 3	ccd 5	ccd 6	ccd 7	ccd 8
level 1 events	309103	294691	437668	306932	393036	384089
rejected events	273766	260067	236665	270742	239059	305192
rejected %	88%	88%	54%	88%	60%	79%

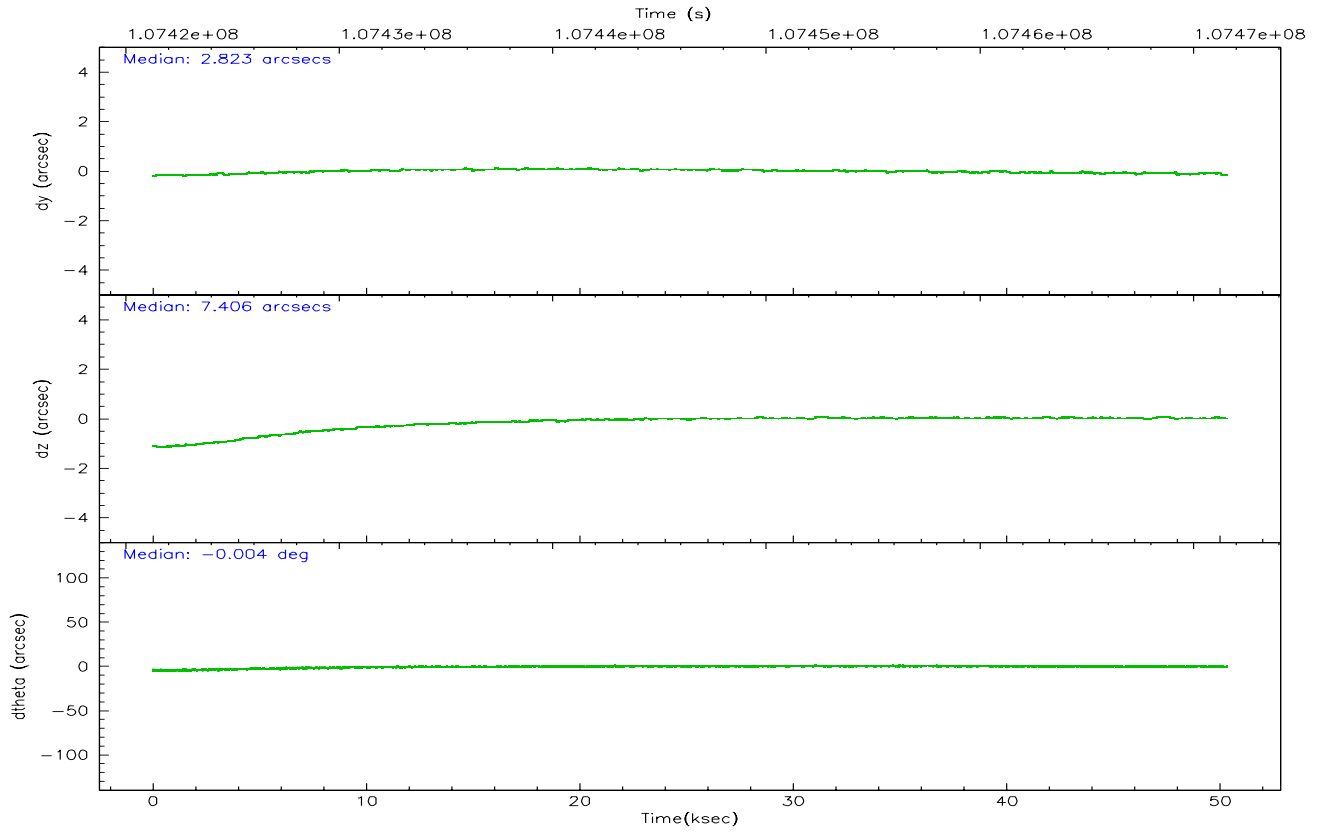
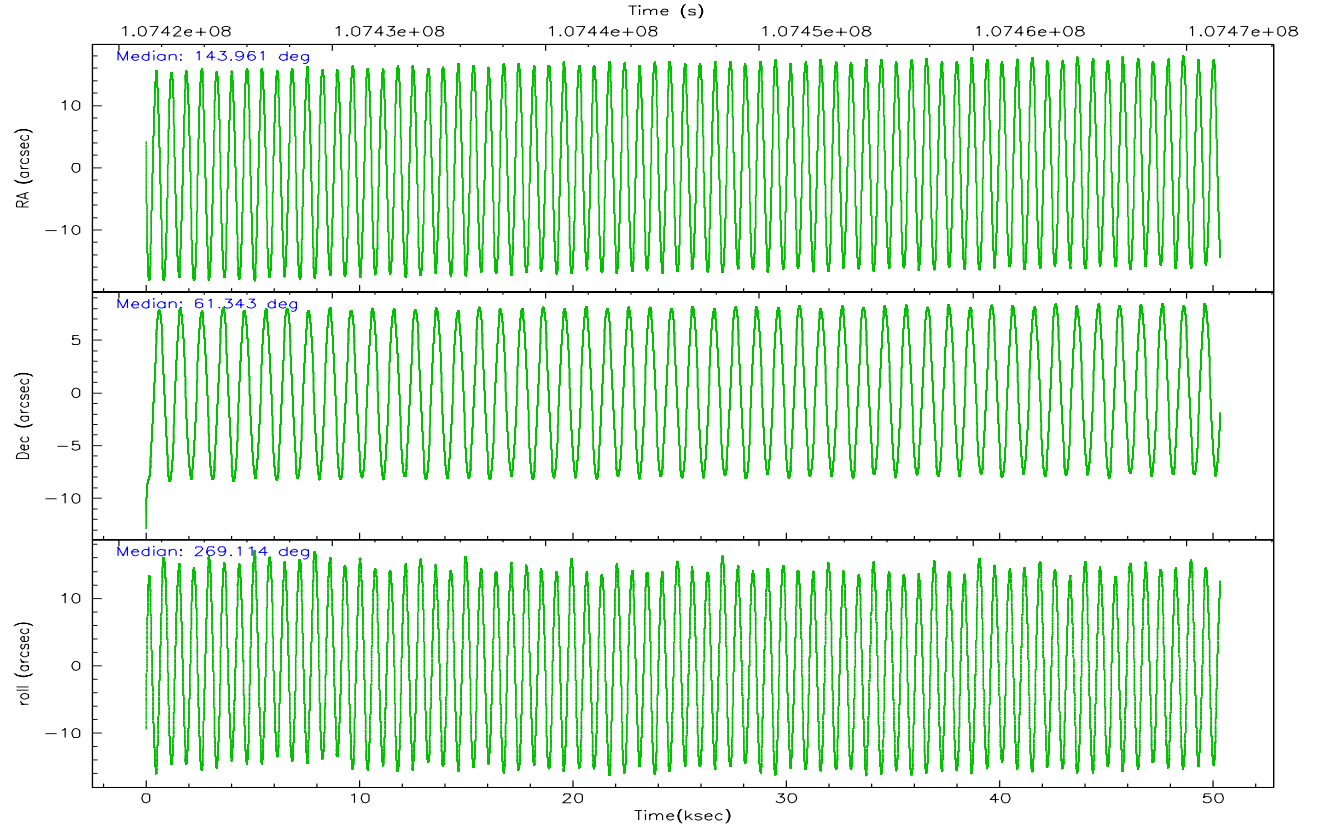
	ccd 2	ccd 3	ccd 5	ccd 6	ccd 7	ccd 8
grade 0 events	15184	14740	29614	15011	10598	25838
	4%	5%	6%	4%	2%	6%
grade 1 events	136	143	775	156	239	201
	0%	0%	0%	0%	0%	0%
grade 2 events	7582	7179	56929	7264	37705	17086
	2%	2%	13%	2%	9%	4%
grade 3 events	3219	3271	4517	3512	8431	8299
	1%	1%	1%	1%	2%	2%
grade 4 events	3229	3330	4169	3442	8243	7648
	1%	1%	0%	1%	2%	1%
grade 5 events	10544	11443	20633	12987	26072	16618
	3%	3%	4%	4%	6%	4%
grade 6 events	6124	6108	105796	6966	89023	20047
	1%	2%	24%	2%	22%	5%
grade 7 events	263085	248477	215235	257594	212725	288352
	85%	84%	49%	83%	54%	75%

2.2 Compared Parameters

Parameter	Planned	Actual	Parameter	Planned	Actual
Instrument	ACIS	ACIS	Obspar format version number	6	6
Detector	ACIS-235678	ACIS-235678	Obspar file type	PREDICTED	ACTUAL
Grating	NONE	NONE	Obspar update status	NONE	UPDATED
Data mode	FAINT	FAINT	Number of optional ACIS chips dropped	0	0
Observation mode	POINTING	POINTING	On-chip summing requested	N	N
Pointing RA	143.933247	143.9614620579639	Subarray requested	NONE	NONE
Pointing Dec	61.367260	61.34353252951428	Alternating exposures requested	N	N
Pointing Roll	268.983875	269.1157419493193	Primary exposure time	0.000000	3.2
SIM focus pos (mm)	-0.684267	-0.6828225247311905			
SIM defocus (mm)	0	0.001444936568705701			
SIM translation stage pos (mm)	-190.132523	-190.1400660498719			
SIM translation stage offset (mm)	0	0.00754346686406393			
Observation start time	107421590.184000	107420556.24314			
Observation start date	2001-05-28T07:18:46	2001-05-28T07:02:36			
Observation end time	107471590.184000	107472104.00765			
Observation end date	2001-05-28T21:12:06	2001-05-28T21:21:44			
Read mode	TIMED	TIMED			

2.3 Aspect



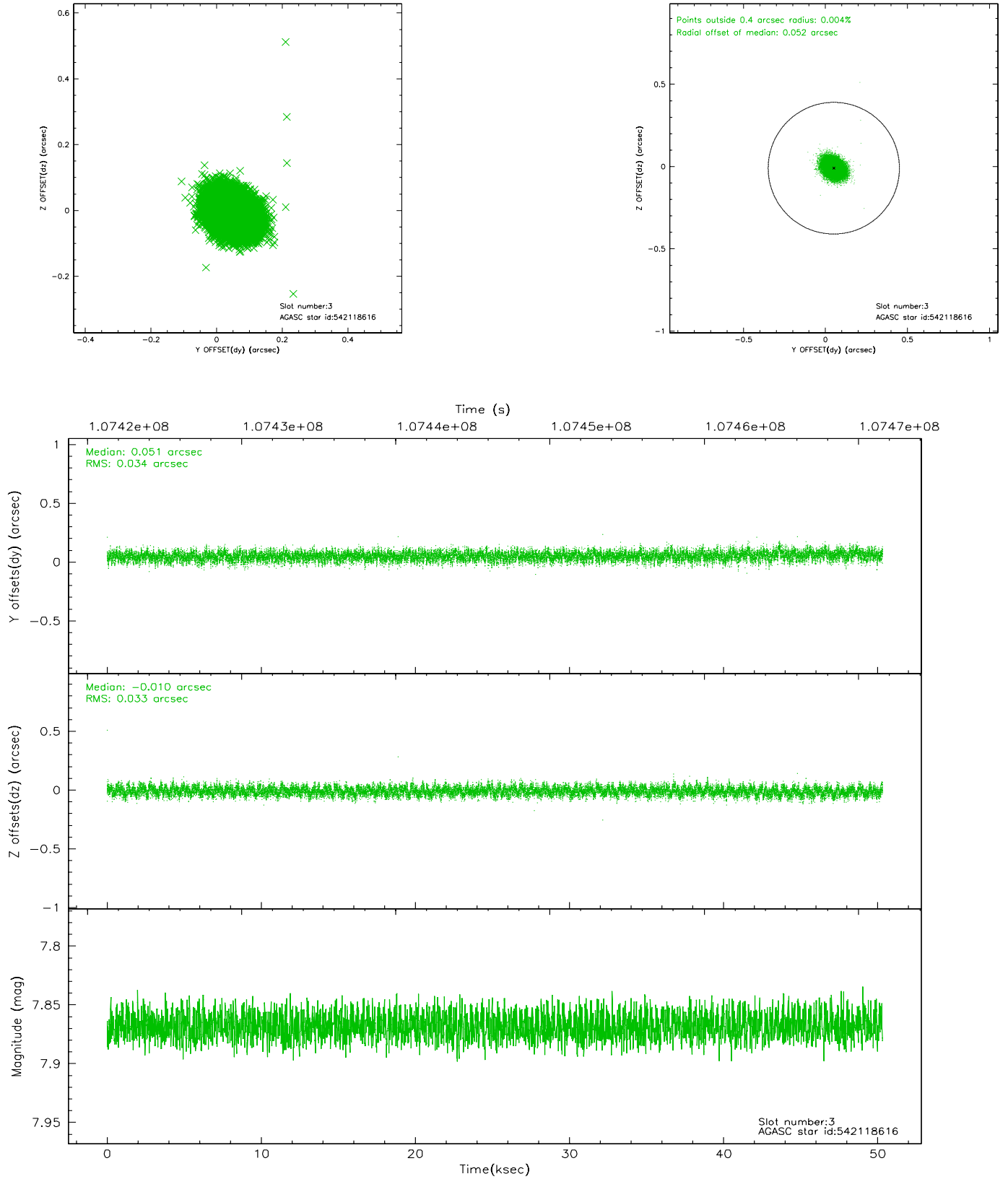


Slot Statistics

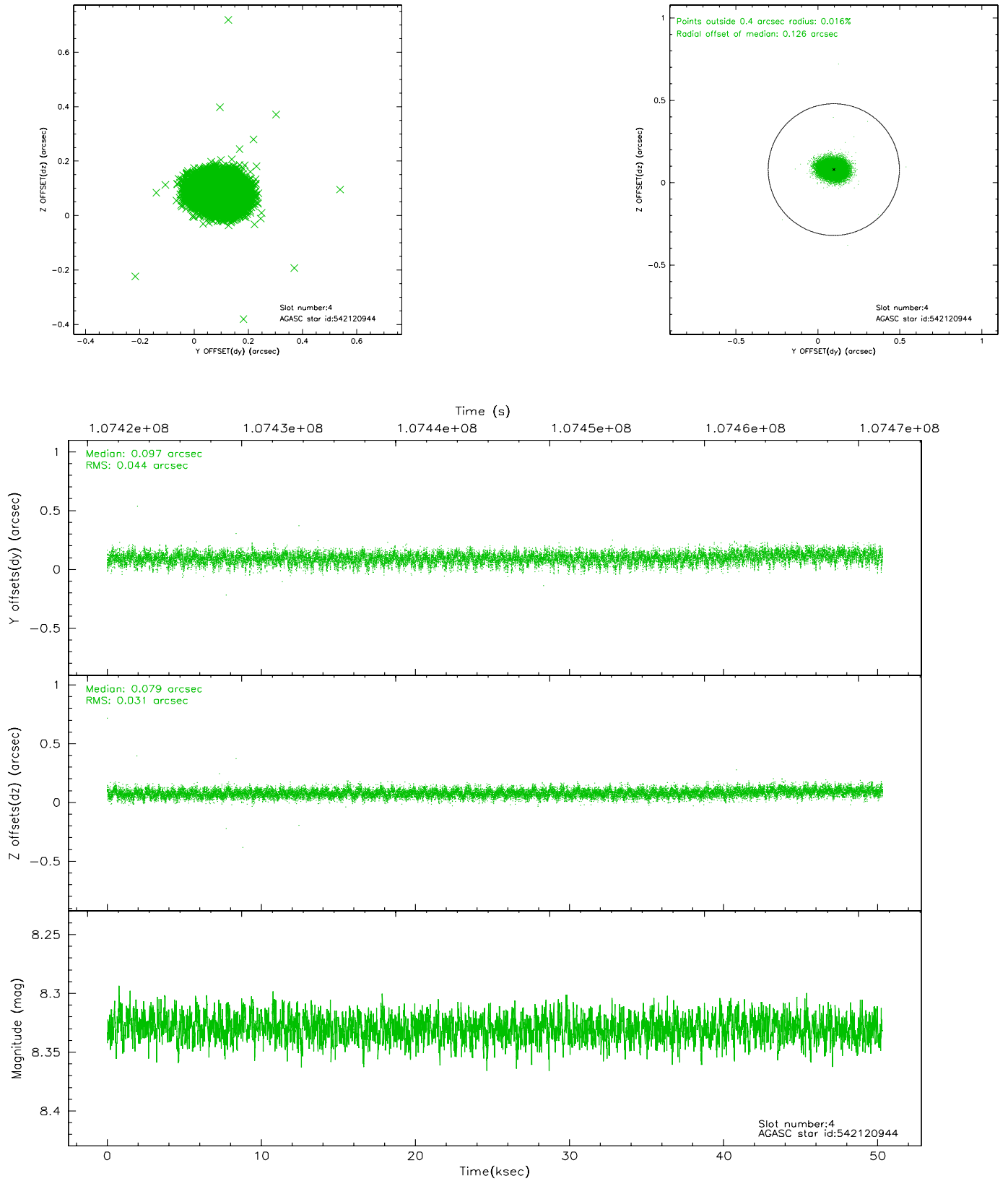
slot	status	id	mag	n_pts	med_dy	med_dz	dr1	dr2	ra	dec	mean_y	mean_z
0	FID	ACIS-S-2	7.11	12275	0.014	0.032	0.013	0.024	0.000000	0.000000	-755.44	-1728.38
1	FID	ACIS-S-4	7.19	12273	-0.110	-0.015	0.010	0.025	0.000000	0.000000	2157.73	180.08
2	FID	ACIS-S-5	7.24	12273	0.065	-0.007	0.012	0.023	0.000000	0.000000	-1808.25	173.74
3	GUIDE	542118616	7.87	24547	0.051	-0.010	0.051	0.082	143.587429	60.983118	1391.00	-578.48
4	GUIDE	542120944	8.33	24546	0.097	0.079	0.056	0.094	144.941247	60.717868	2291.54	1816.79
5	GUIDE	542126424	8.64	24542	-0.080	-0.023	0.059	0.097	143.278173	61.817059	-1605.71	-1141.69
6	GUIDE	542114904	8.51	24542	0.051	-0.110	0.066	0.106	144.025400	61.253580	405.39	167.46
7	GUIDE	542123560	9.02	24536	-0.121	0.064	0.092	0.154	145.077106	61.935745	-2098.70	1901.14

2.4 Star Slots

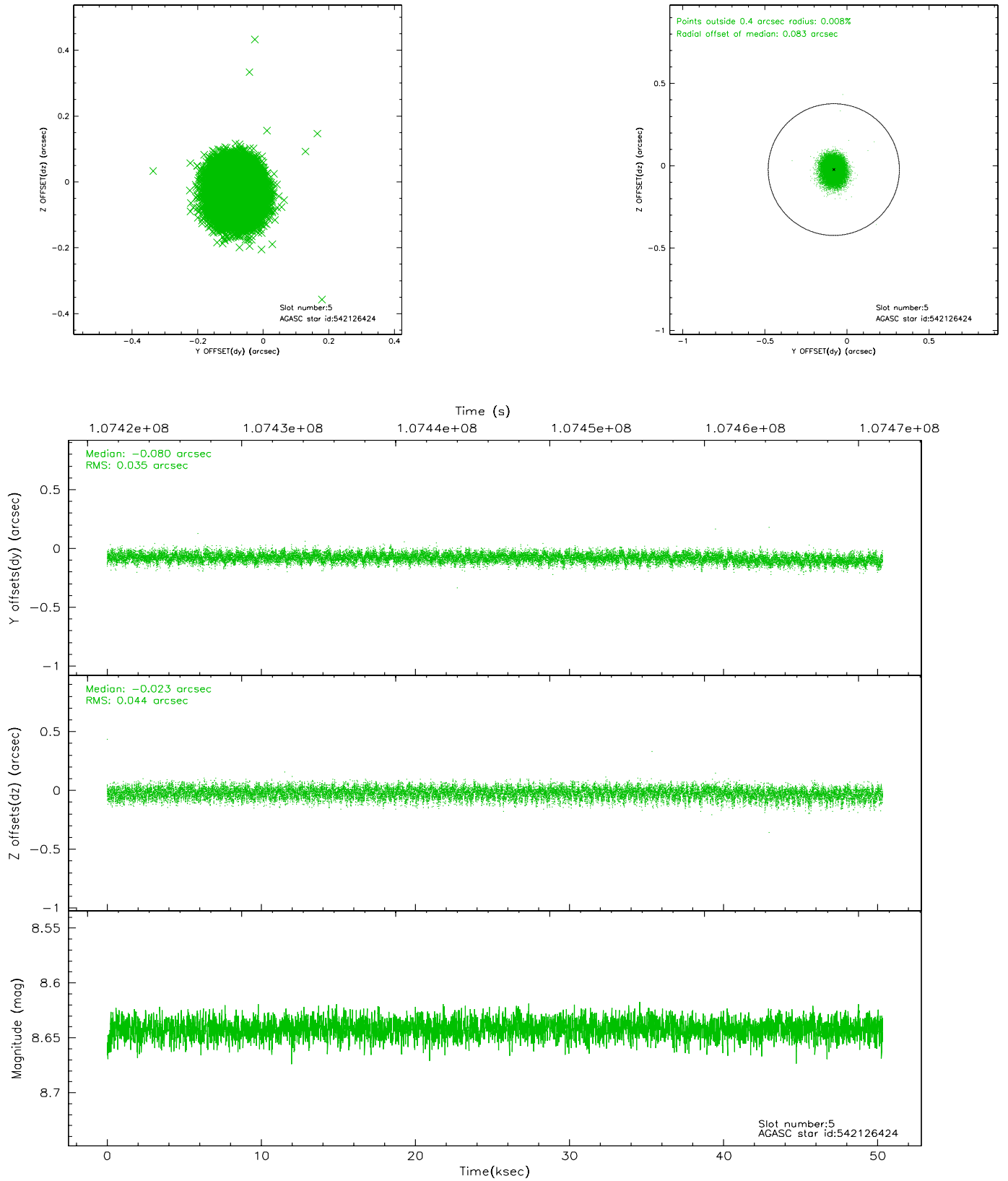
2.4.1 Slot 3



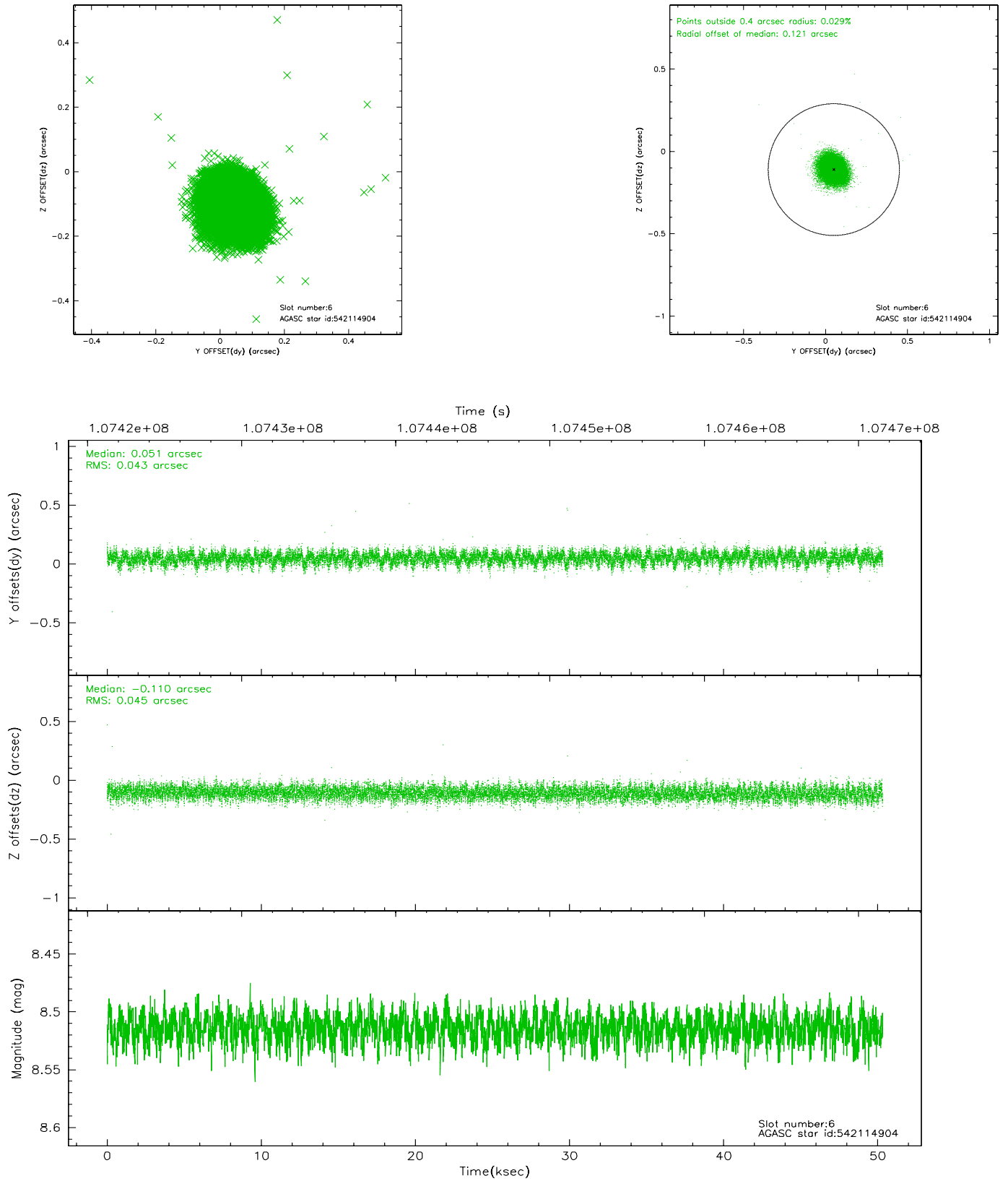
2.4.2 Slot 4



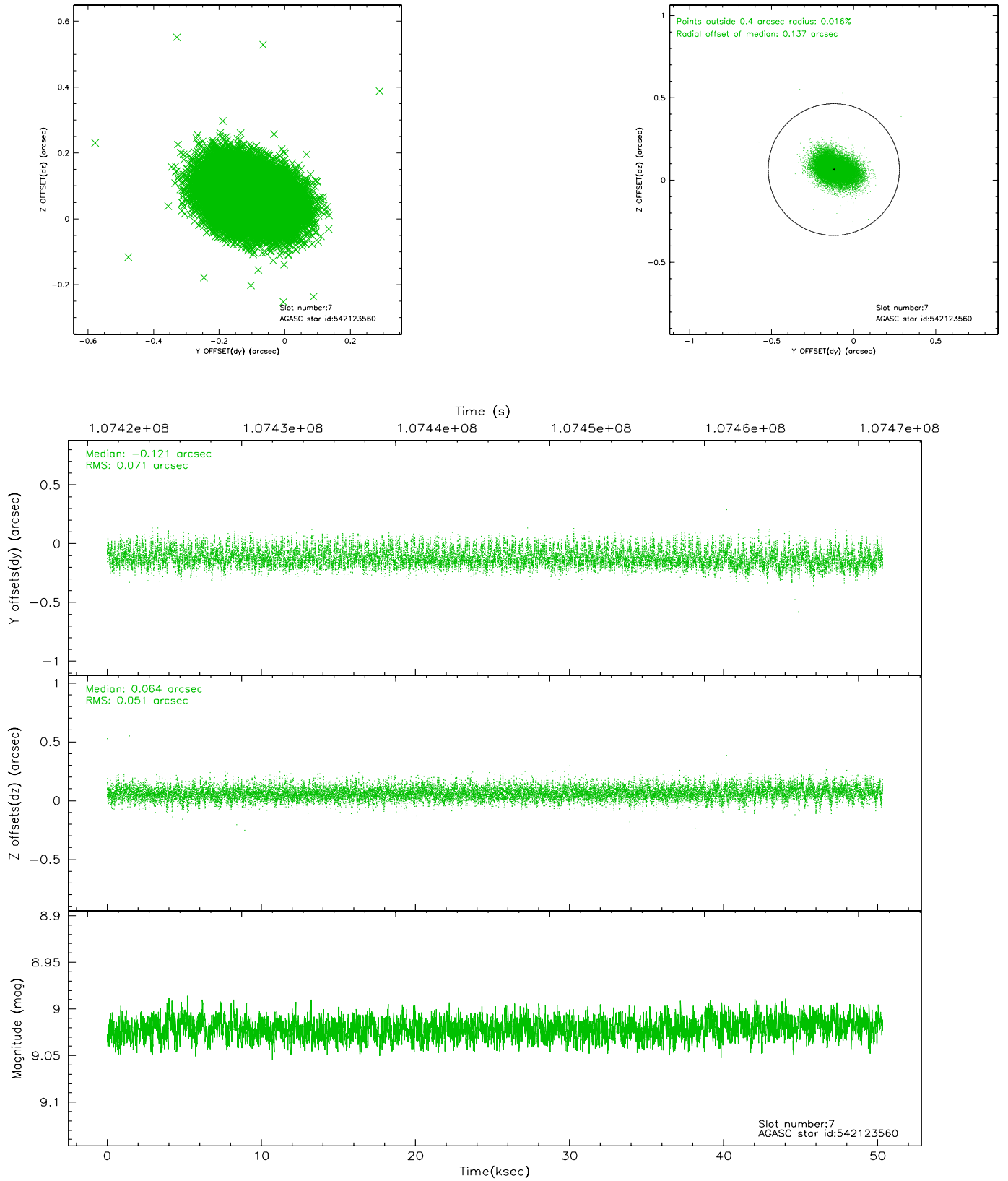
2.4.3 Slot 5



2.4.4 Slot 6

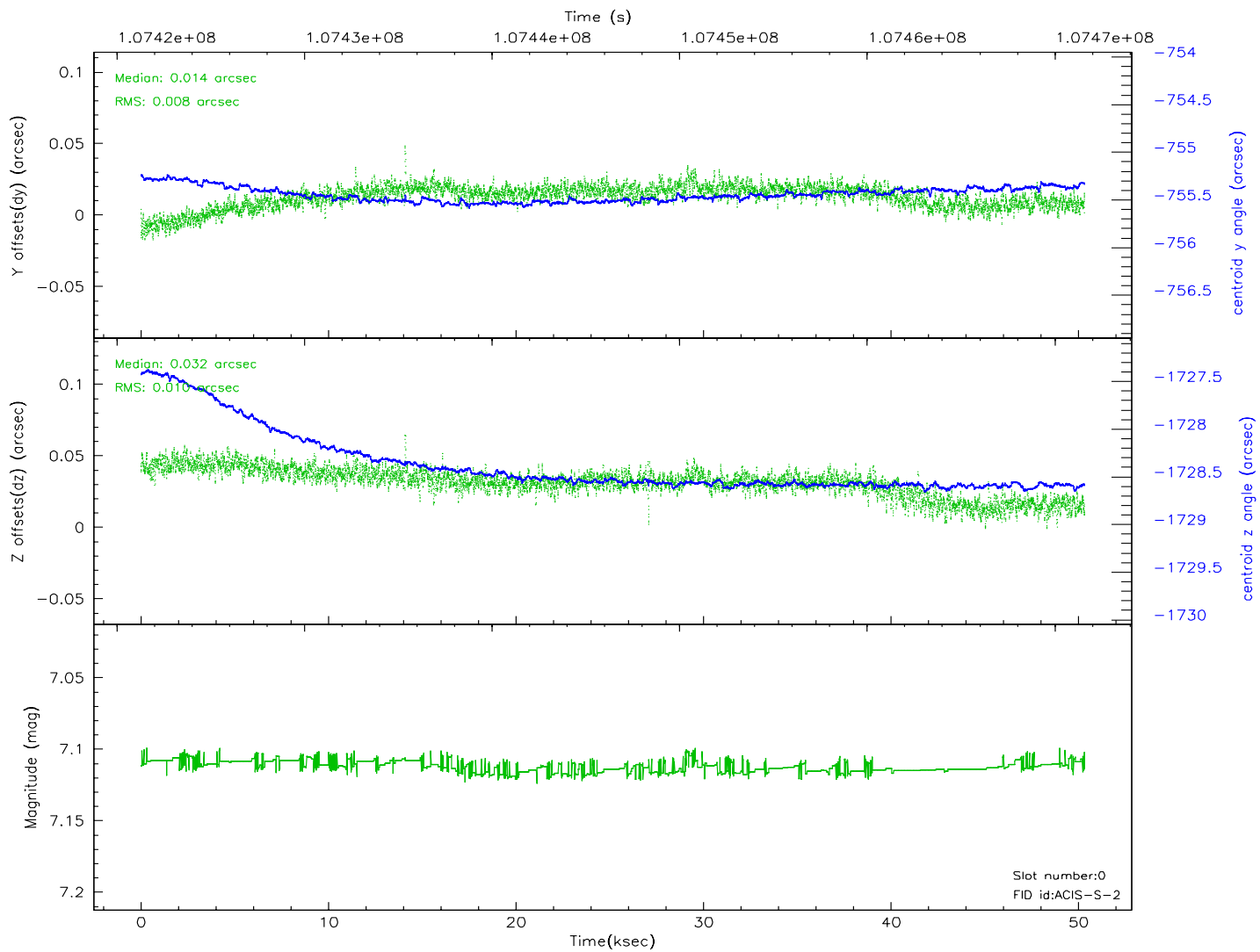
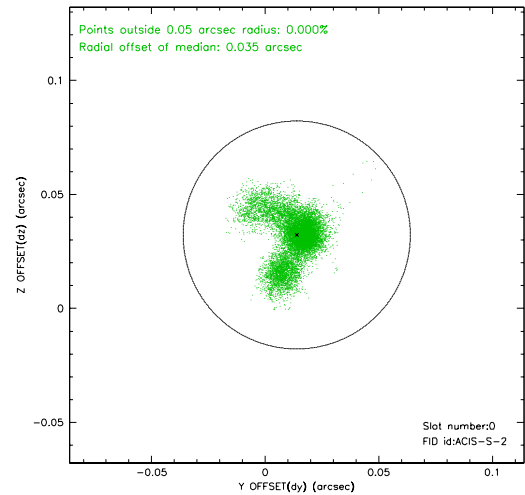
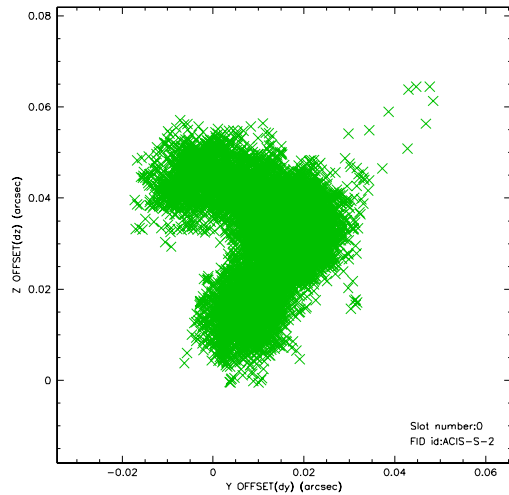


2.4.5 Slot 7

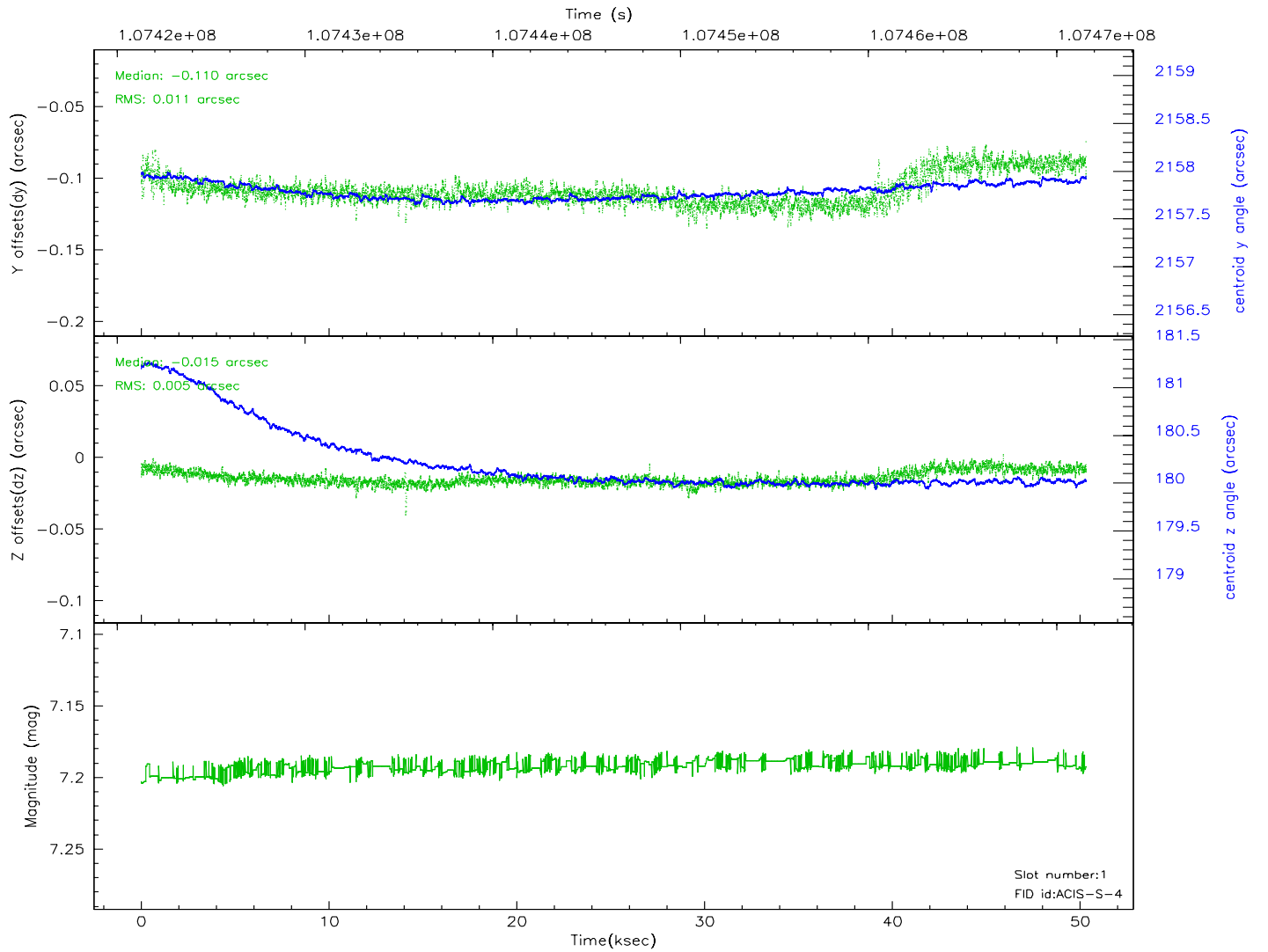
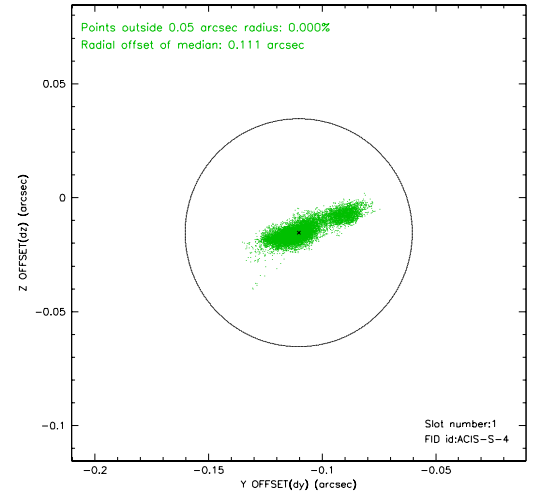
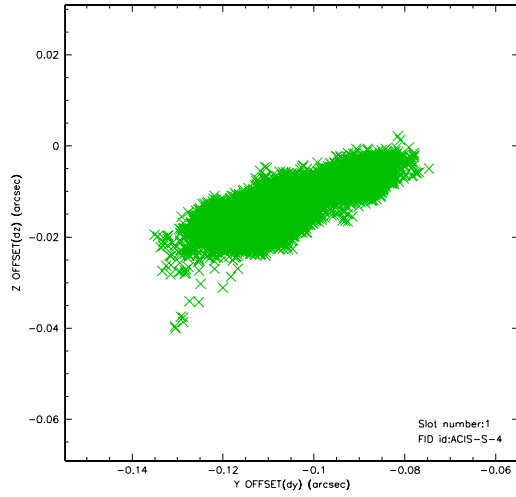


2.5 FID Slots

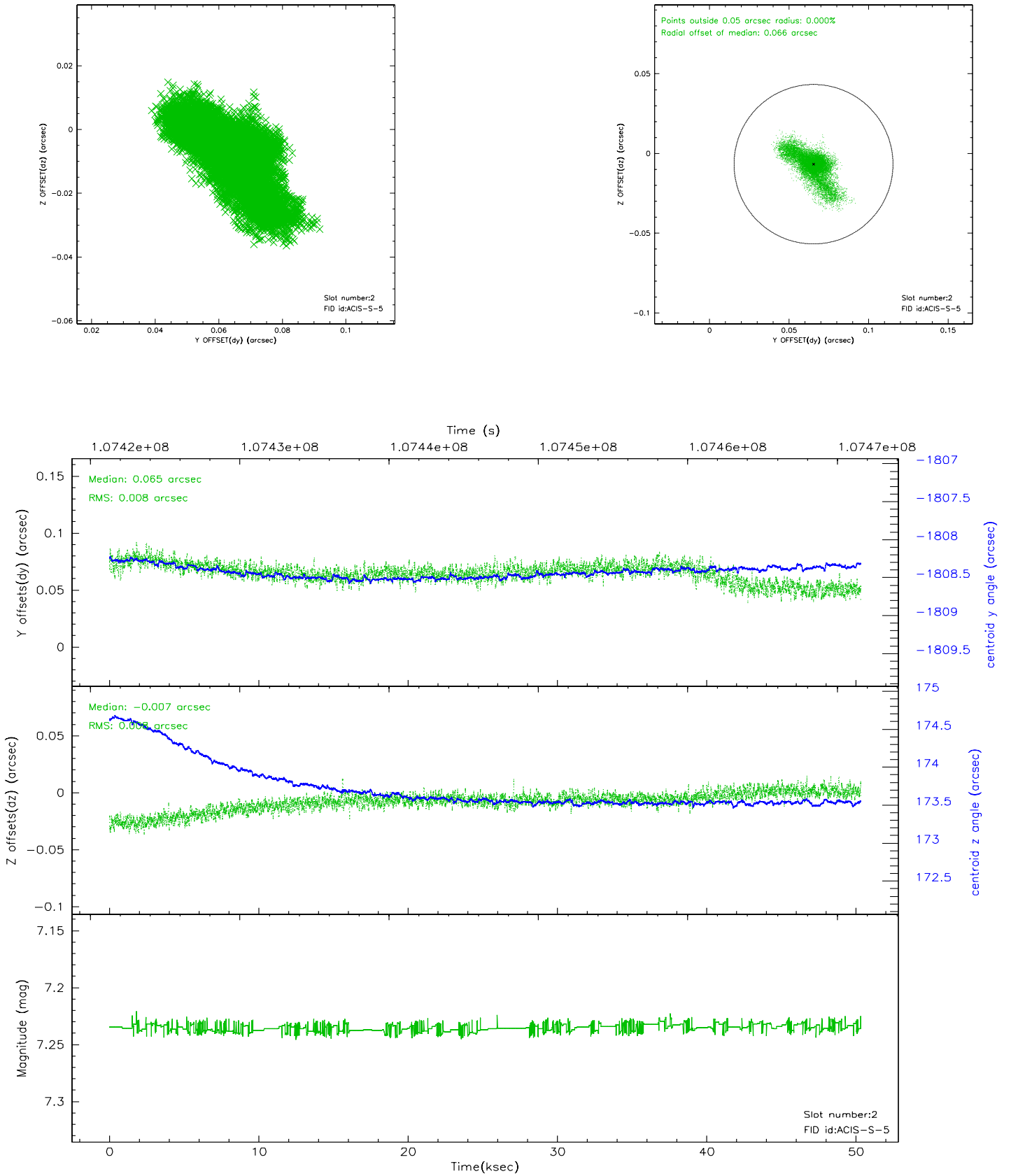
2.5.1 Slot 0



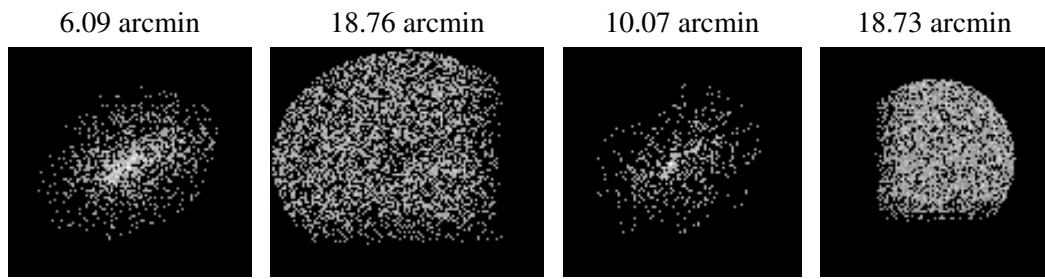
2.5.2 Slot 1



2.5.3 Slot 2



3 Point Sources



A Summary

A.1 Status

V&V Scientist	Jen Lauer
V&V Date (YYYY-MM-DD)	2006.11.24
V&V Edition	1
V&V Disposition and Status	OK
V&V Charge Time	49.932

A.2 Comments