

V&V Reference Report

L2 ASCDS Version : 7.6.9

Observation 2031 - L2 Version 001
Chandra X-Ray Center

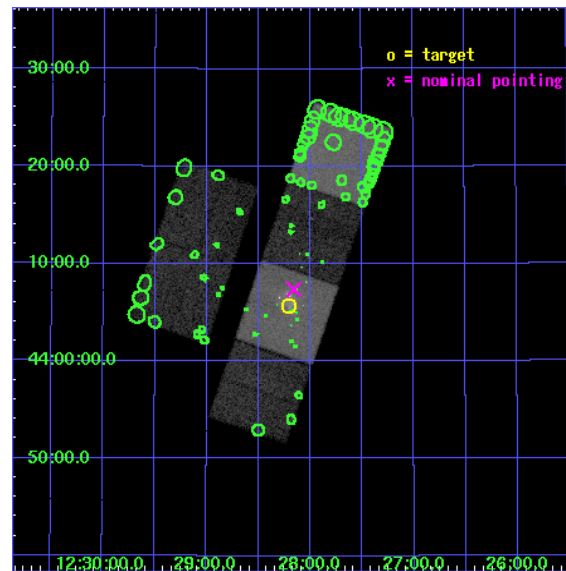
L2 Processing Date : Nov 6 2006

Contents

1	Front	2
2	OBI	3
2.1	OBI	3
2.1.1	Images	3
2.1.2	Bias	3
2.1.3	Parameters	4
2.1.4	Events	4
2.2	Compared Parameters	5
2.3	Aspect	6
2.4	Star Slots	9
2.4.1	Slot 3	9
2.4.2	Slot 4	10
2.4.3	Slot 5	11
2.4.4	Slot 6	12
2.4.5	Slot 7	13
2.5	FID Slots	14
2.5.1	Slot 0	14
2.5.2	Slot 1	15
2.5.3	Slot 2	16
3	Point Sources	17
A	Summary	18
A.1	Status	18
A.2	Comments	18

1 Front

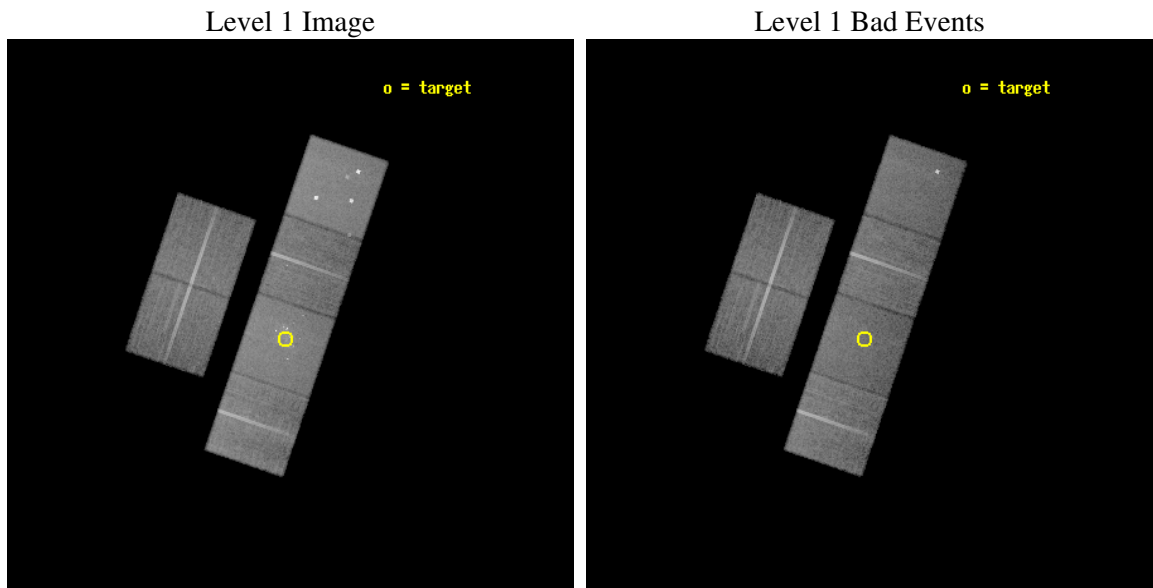
seq_num	600165
obs_id	2031
title	STARBURST-DRIVEN OUTFLOWS AND THE EVOLUTION OF DWARF GALAXIES
observer	Dr. Tim Heckman
object	NGC 4449
dtcycle	0
cycle	P
ra_targ	187.05
dec_targ	44.094722
ra_nom	187.03928361872
dec_nom	44.122888124503
roll_nom	108.82839224924
revision	2
ontime	26937.600025088
livetime	26596.499913695
ontime2	26934.359024927
ontime3	26937.600025088
ontime5	26937.600025088
ontime6	26934.359034926
ontime7	26937.600025088
ontime8	26937.600025088
l2events	246179



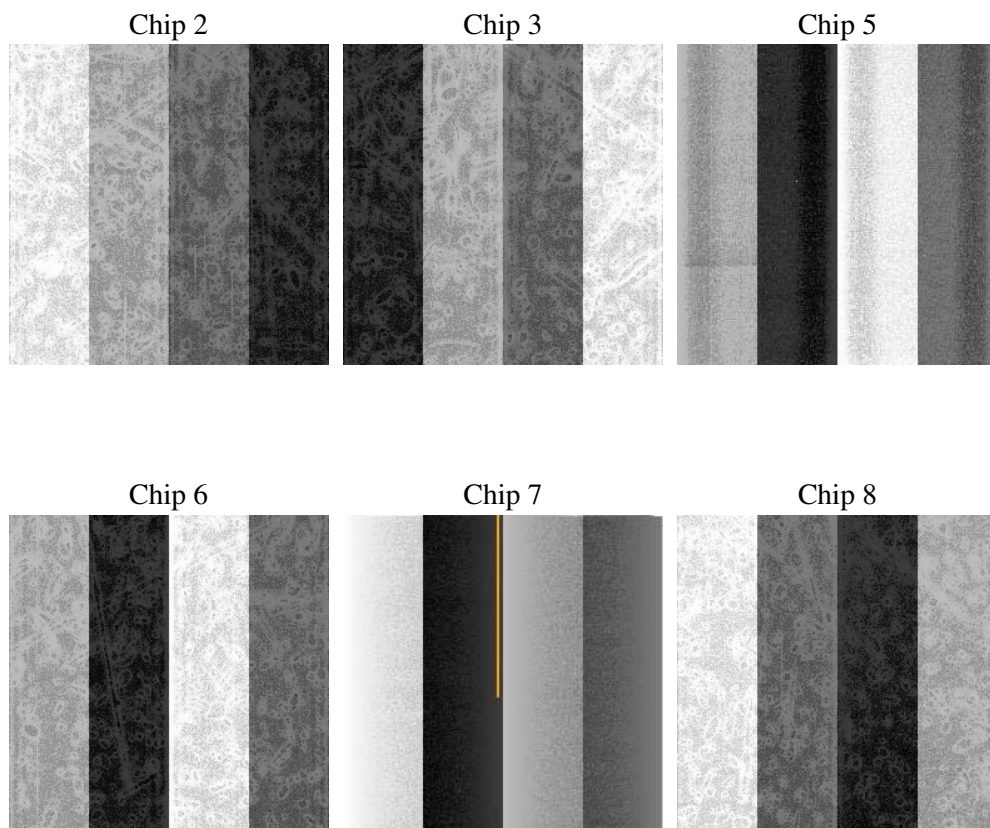
2 OBI

2.1 OBI

2.1.1 Images



2.1.2 Bias



2.1.3 Parameters

obi_num	0
ascdsver	7.6.9
caldsver	3.2.3
date	2006-11-06T14:05:33
revision	2

sched_exp_time	27000.000000
ontime	26942.457078159
ontime2	26939.216077998
ontime3	26942.457078159
ontime5	26942.457078159
ontime6	26939.216087997
ontime7	26942.457078159
ontime8	26942.457048222
l1events	1159800

2.1.4 Events

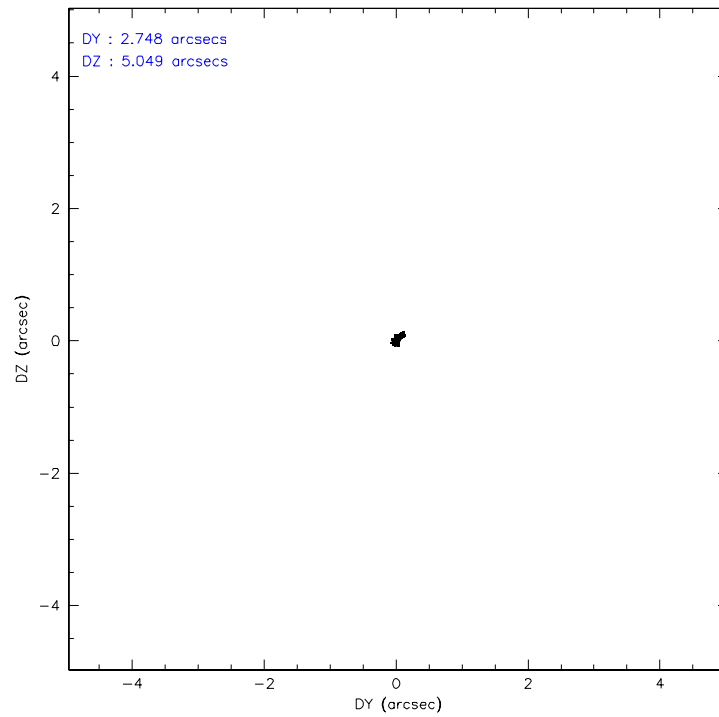
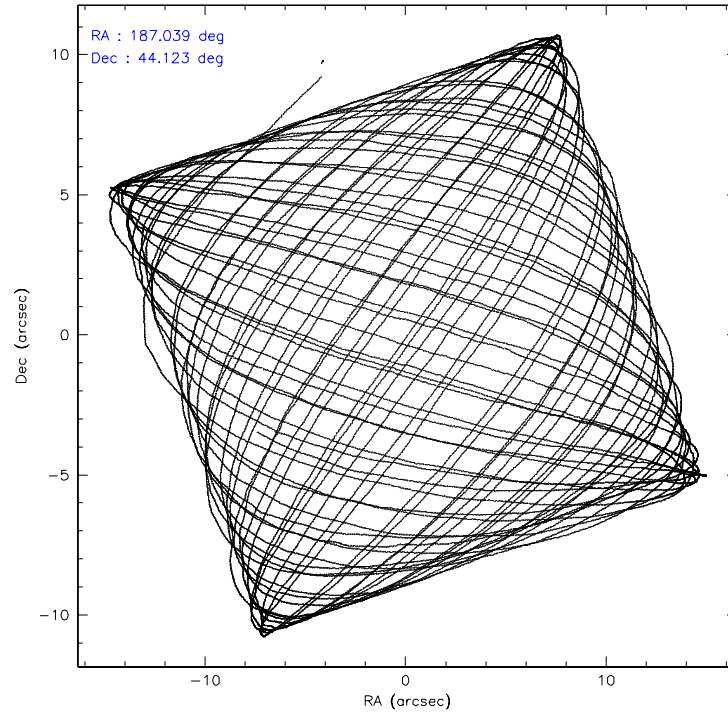
	ccd 2	ccd 3	ccd 5	ccd 6	ccd 7	ccd 8
level 1 events	167357	157408	240895	168189	220133	205818
rejected events	149613	139619	129871	149392	129534	166886
rejected %	89%	88%	53%	88%	58%	81%

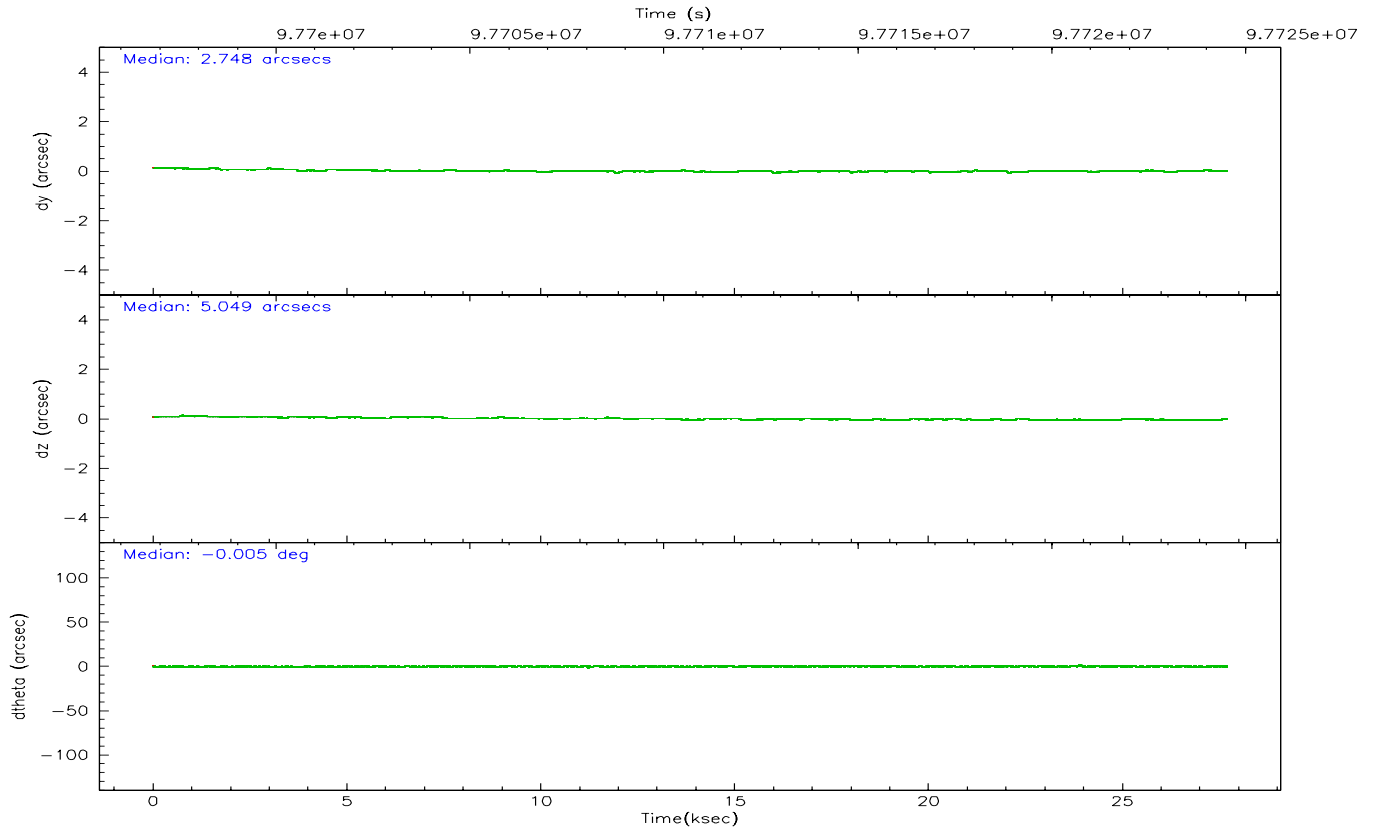
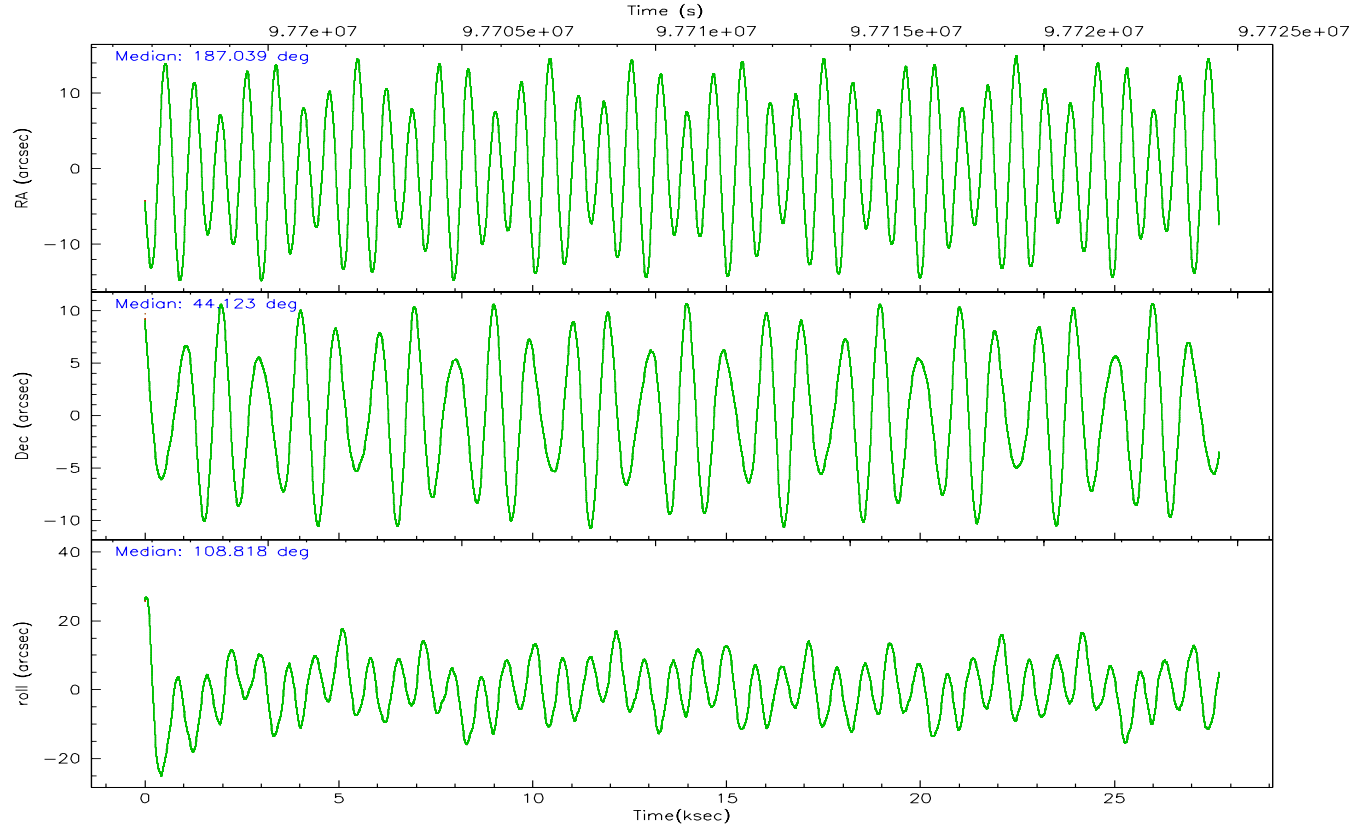
	ccd 2	ccd 3	ccd 5	ccd 6	ccd 7	ccd 8
grade 0 events	7251	7673	18041	7600	9259	12673
	4%	4%	7%	4%	4%	6%
grade 1 events	71	70	190	69	143	127
	0%	0%	0%	0%	0%	0%
grade 2 events	3895	3414	32376	3775	22158	8359
	2%	2%	13%	2%	10%	4%
grade 3 events	1703	1755	2557	1889	5566	4201
	1%	1%	1%	1%	2%	2%
grade 4 events	1732	1759	2217	1839	5360	3948
	1%	1%	0%	1%	2%	1%
grade 5 events	5761	6247	11693	6971	14332	8663
	3%	3%	4%	4%	6%	4%
grade 6 events	3171	3189	55868	3695	48278	9753
	1%	2%	23%	2%	21%	4%
grade 7 events	143773	133301	117953	142351	115037	158094
	85%	84%	48%	84%	52%	76%

2.2 Compared Parameters

Parameter	Planned	Actual	Parameter	Planned	Actual
Instrument	ACIS	ACIS	Obspar format version number	6	6
Detector	ACIS-235678	ACIS-235678	Obspar file type	PREDICTED	ACTUAL
Grating	NONE	NONE	Obspar update status	NONE	UPDATED
Data mode	FAINT	FAINT	Number of optional ACIS chips dropped	0	0
Observation mode	POINTING	POINTING	On-chip summing requested	N	N
Pointing RA	187.068137	187.0392836187242	Subarray requested	NONE	NONE
Pointing Dec	44.105103	44.12288812450301	Alternating exposures requested	N	N
Pointing Roll	108.651681	108.8283922492373	Primary exposure time	0.000000	3.2
SIM focus pos (mm)	-0.684267	-0.6828225247311905			
SIM defocus (mm)	0	0.001444936568705701			
SIM translation stage pos (mm)	-190.132523	-190.1400660498719			
SIM translation stage offset (mm)	0	0.00754346686406393			
Observation start time	97697528.184000	97696310.65411501			
Observation start date	2001-02-04T18:11:04	2001-02-04T17:51:50			
Observation end time	97724528.184000	97726245.780269			
Observation end date	2001-02-05T01:41:04	2001-02-05T02:10:45			
Read mode	TIMED	TIMED			

2.3 Aspect



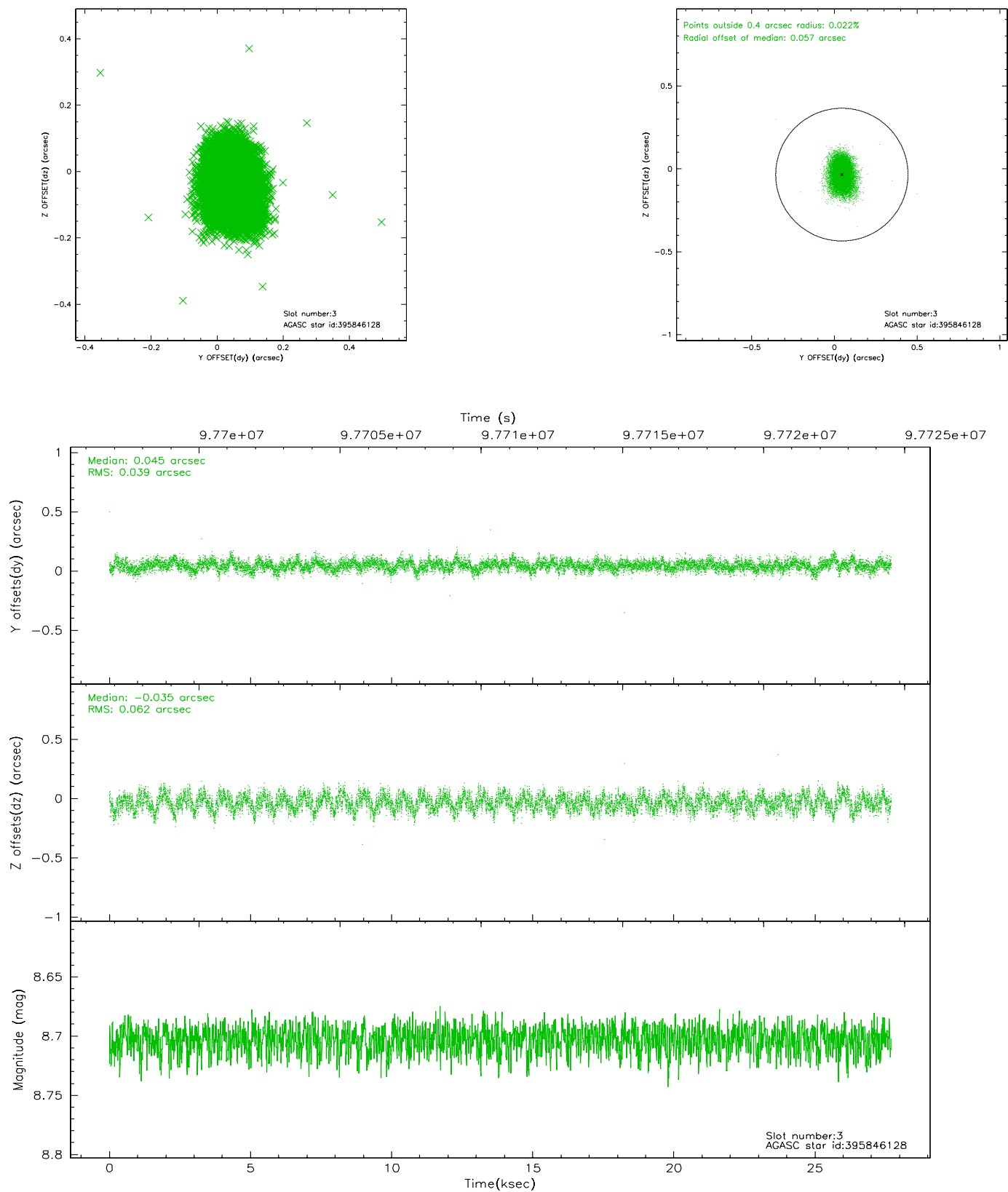


Slot Statistics

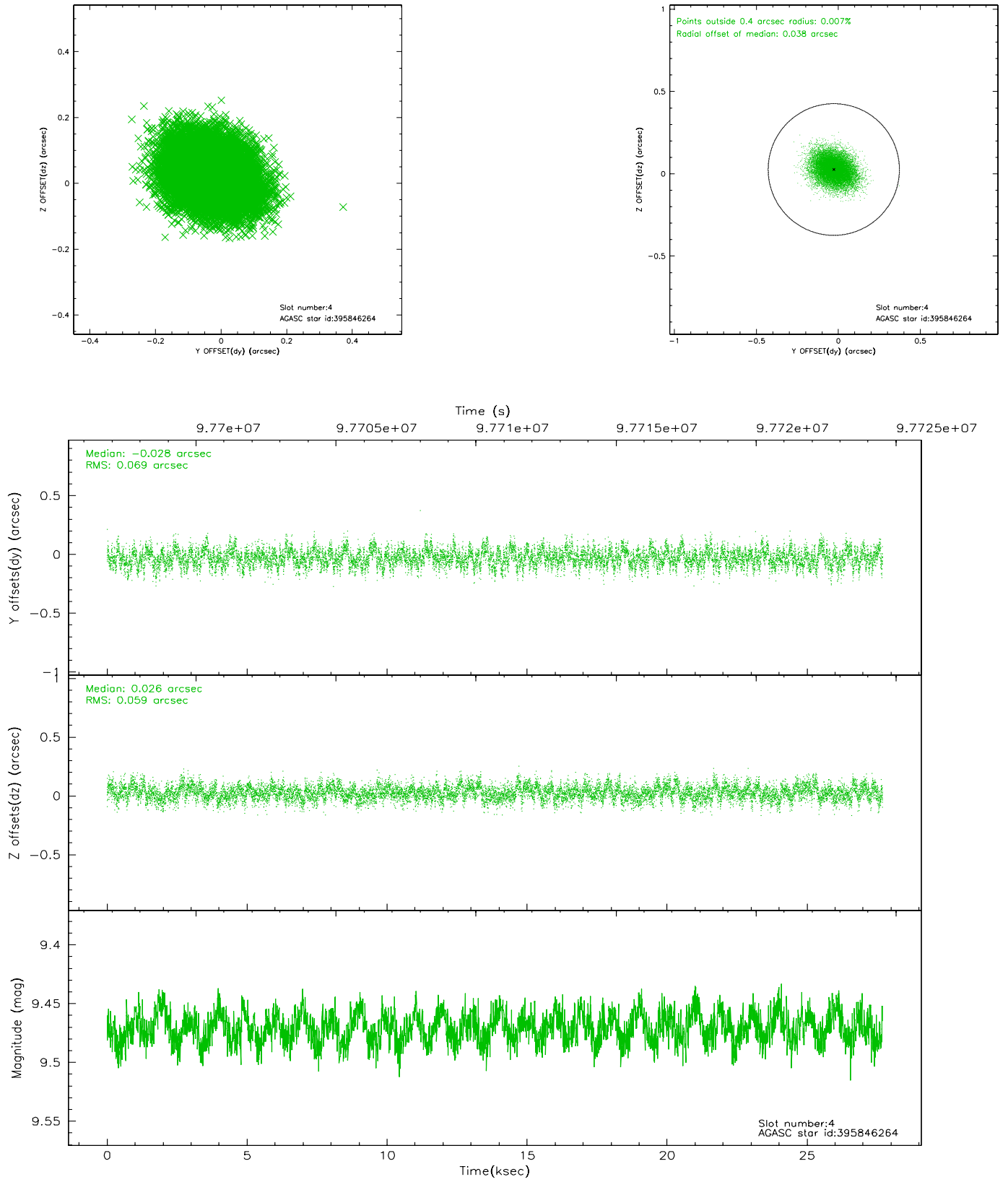
slot	status	id	mag	n_pts	med_dy	med_dz	dr1	dr2	ra	dec	mean_y	mean_z
0	FID	ACIS-S-2	7.12	6756	-0.013	0.027	0.007	0.011	0.000000	0.000000	-755.37	-1726.16
1	FID	ACIS-S-4	7.20	6756	-0.078	-0.001	0.005	0.009	0.000000	0.000000	2157.76	182.26
2	FID	ACIS-S-5	7.24	6757	0.060	-0.017	0.006	0.011	0.000000	0.000000	-1808.06	175.94
3	GUIDE	395846128	8.70	13509	0.045	-0.035	0.077	0.126	187.720764	44.188706	-246.43	-1694.24
4	GUIDE	395846264	9.47	13505	-0.028	0.026	0.097	0.158	187.191241	44.211279	261.32	-422.94
5	GUIDE	395850104	9.62	13456	0.006	0.032	0.111	0.180	187.948425	43.919929	-1349.26	-1953.33
6	GUIDE	395854648	9.96	13499	-0.038	0.063	0.111	0.179	187.682941	44.741066	1672.85	-2223.03
7	GUIDE	395845240	10.22	13494	0.016	-0.084	0.149	0.248	186.812482	44.256464	728.63	450.26

2.4 Star Slots

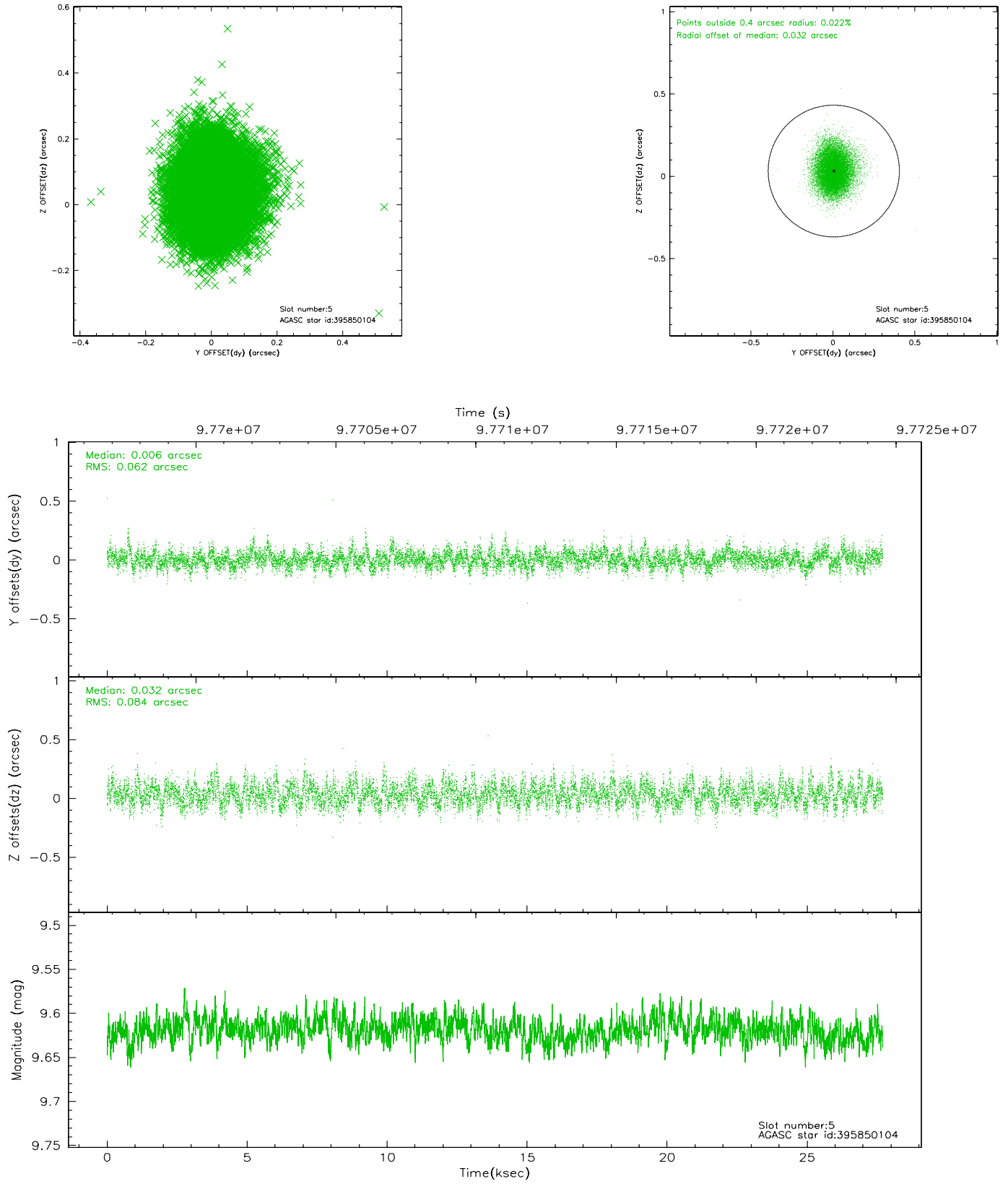
2.4.1 Slot 3



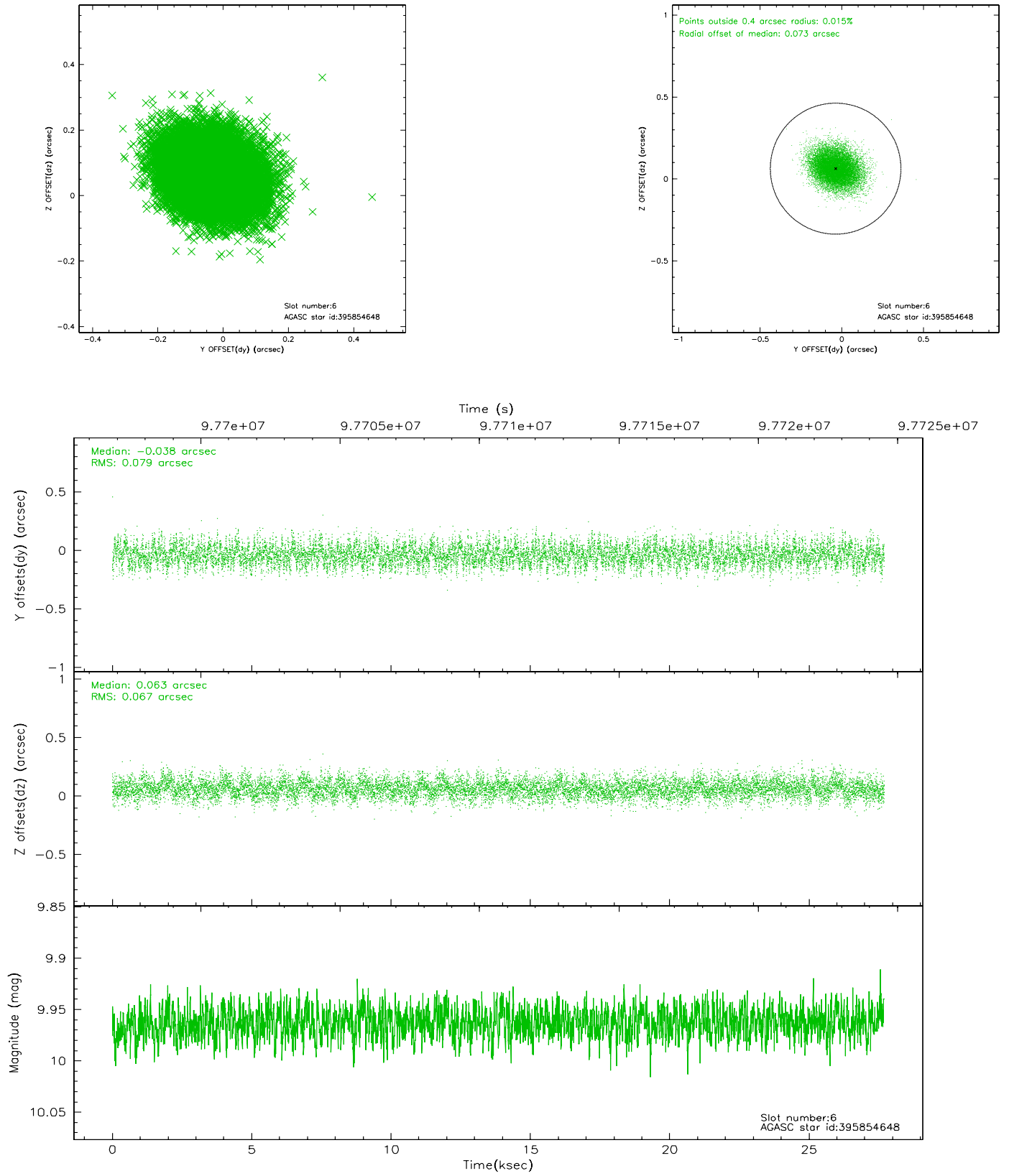
2.4.2 Slot 4



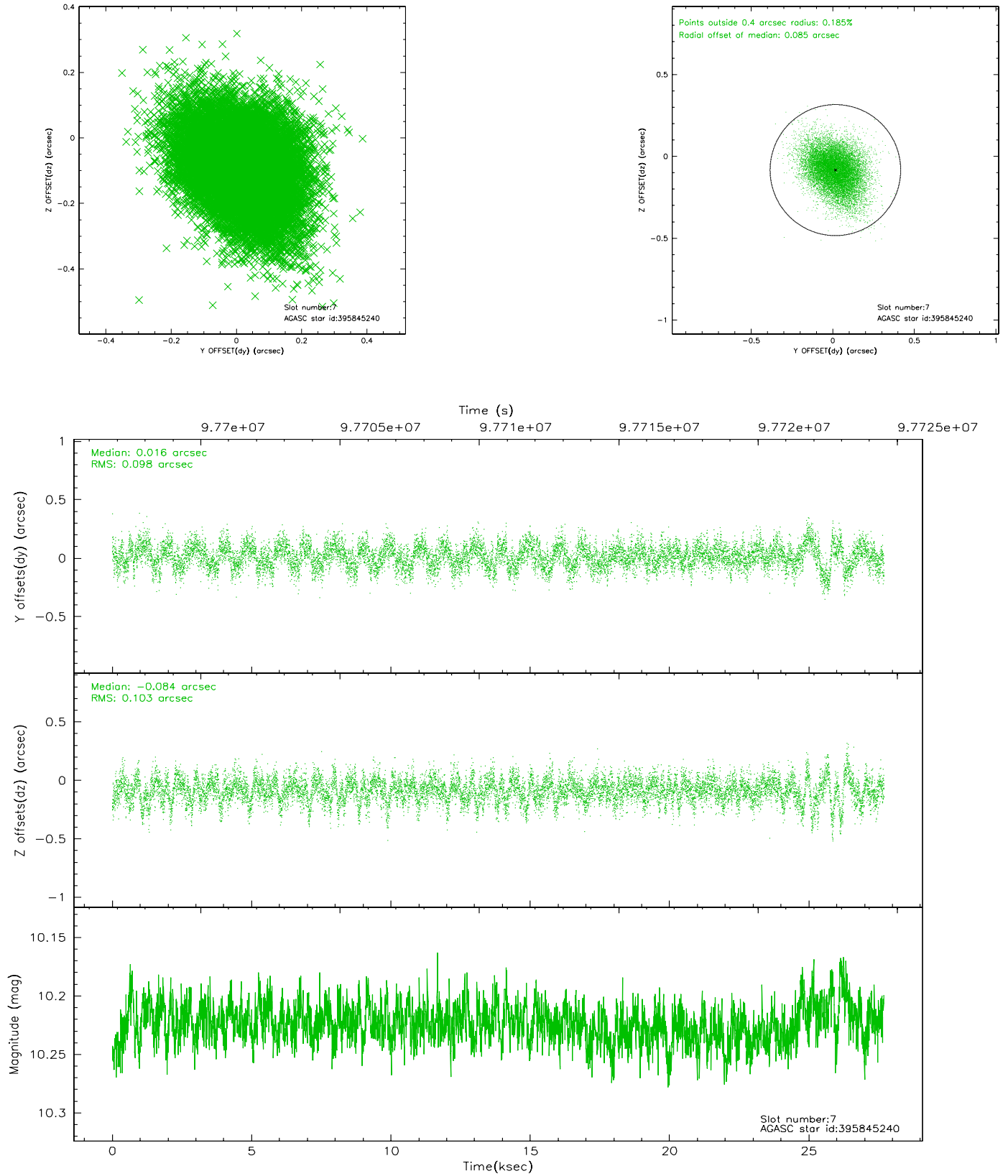
2.4.3 Slot 5



2.4.4 Slot 6

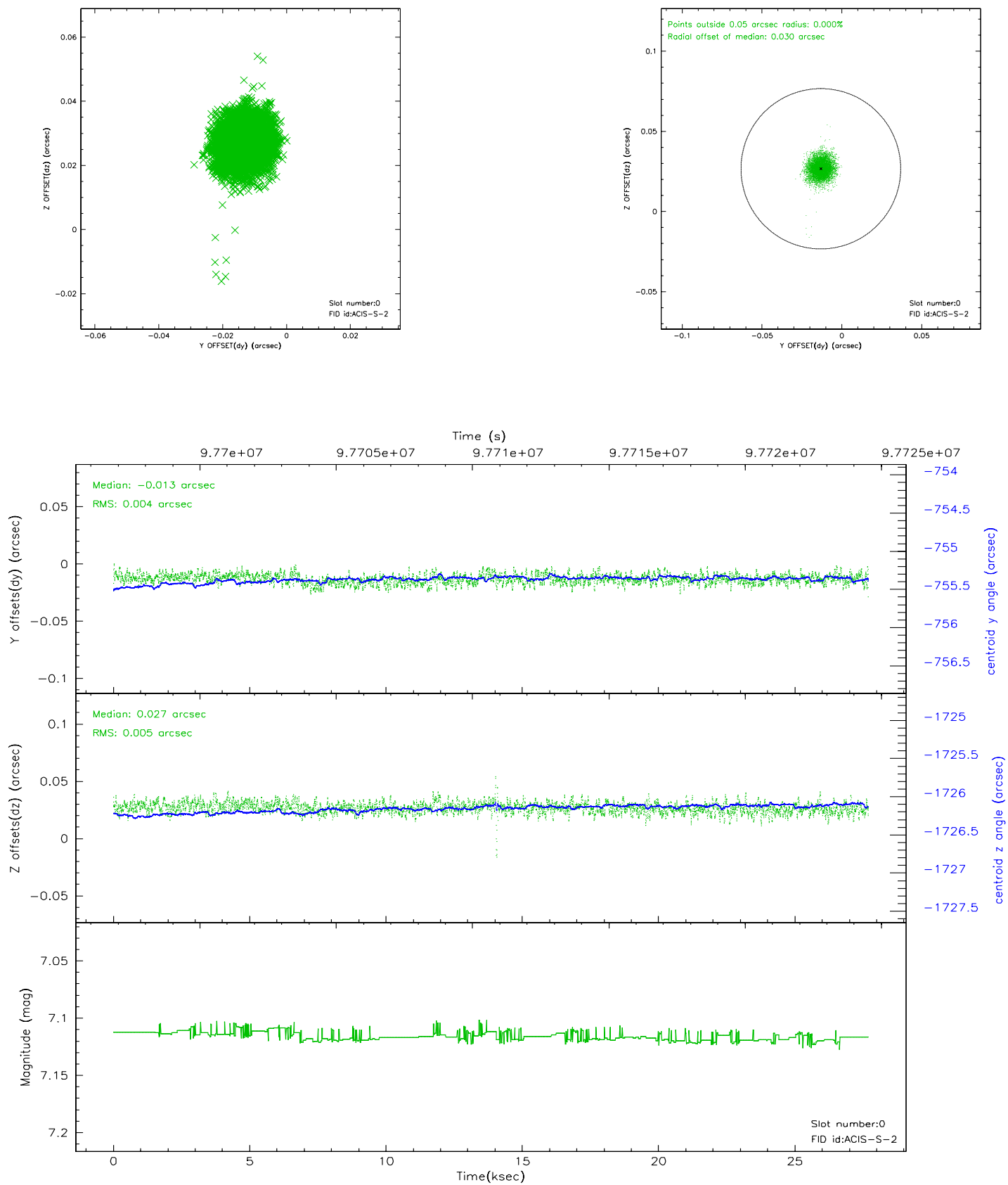


2.4.5 Slot 7

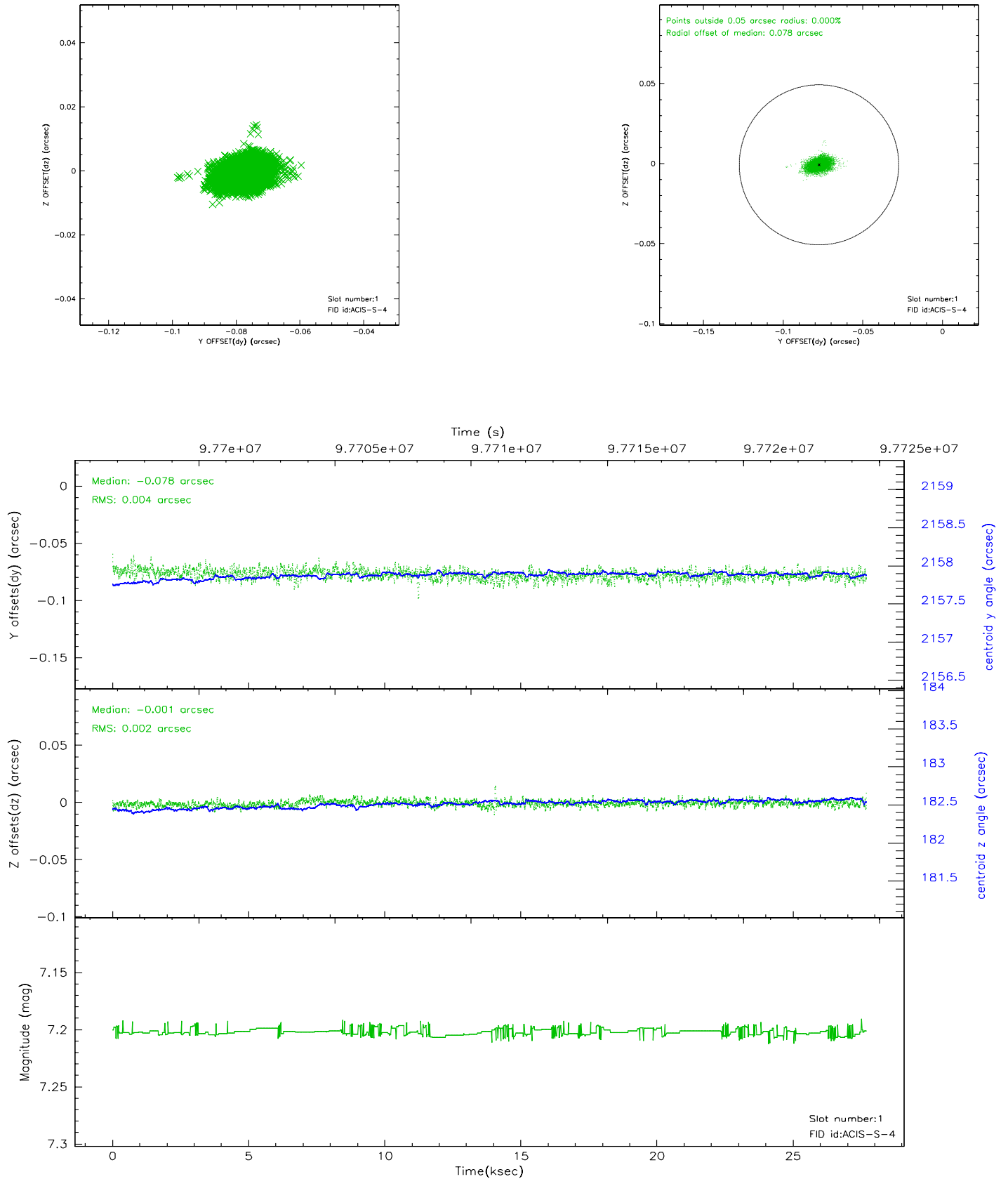


2.5 FID Slots

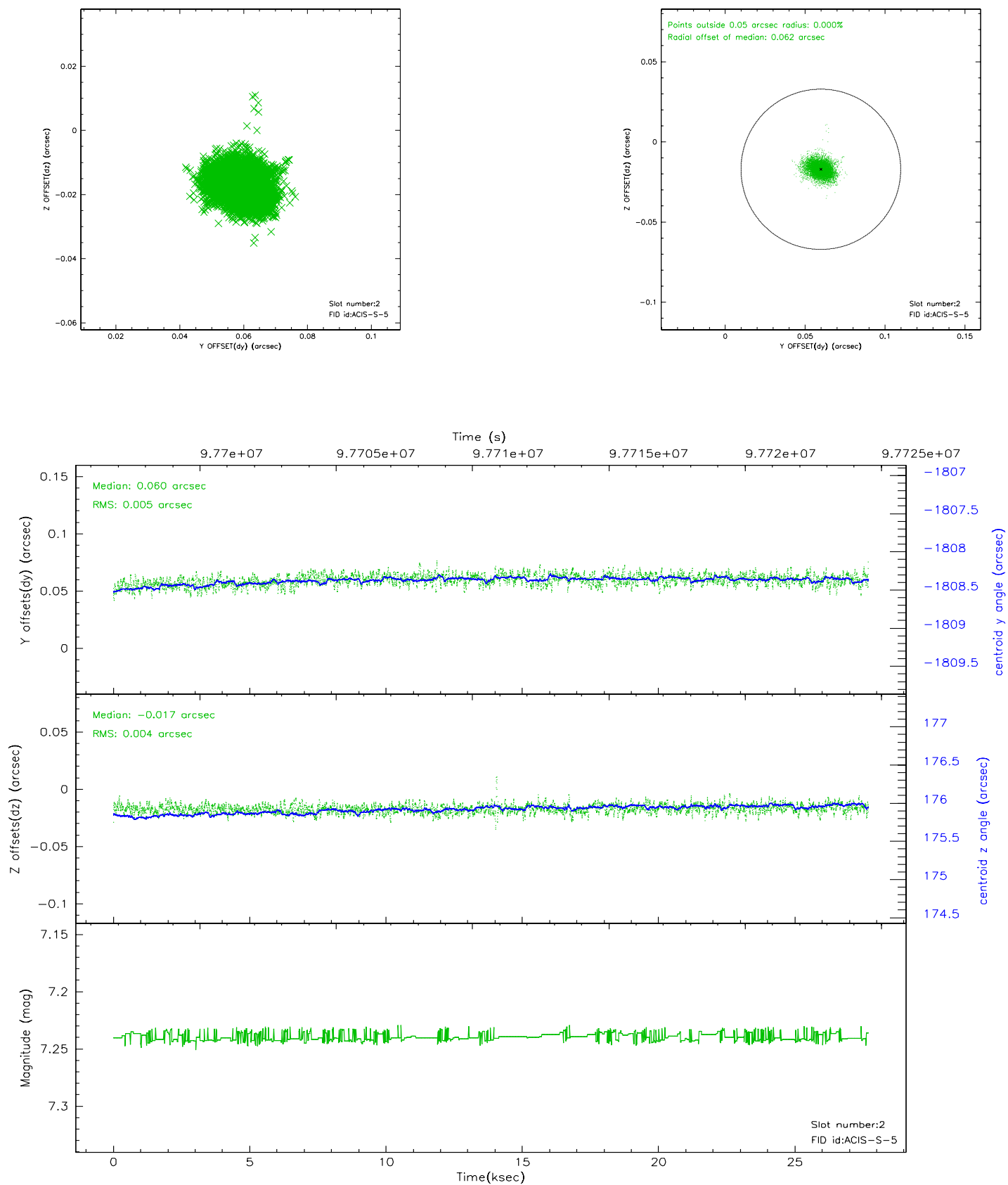
2.5.1 Slot 0



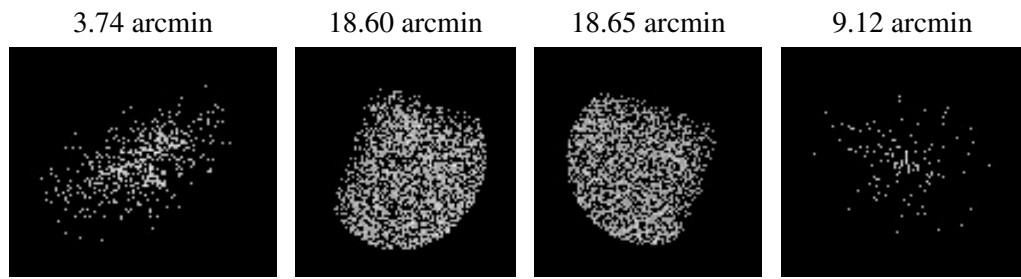
2.5.2 Slot 1



2.5.3 Slot 2



3 Point Sources



A Summary

A.1 Status

V&V Scientist	Beth Sundheim
V&V Date (YYYY-MM-DD)	2006.11.06
V&V Edition	1
V&V Disposition and Status	OK
V&V Charge Time	26.94

A.2 Comments