

V&V Reference Report

L2 ASCDS Version : 7.6.9

Observation 2028 - L2 Version 001
Chandra X-Ray Center

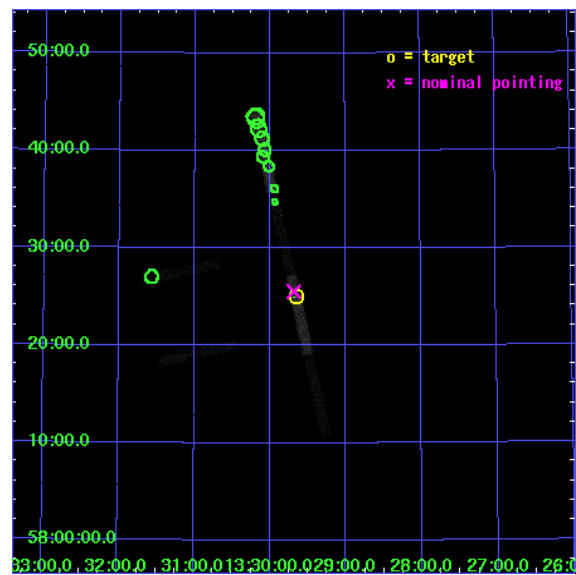
L2 Processing Date : Nov 2 2006

Contents

| | | |
|----------|-------------------------------|-----------|
| 1 | Front | 2 |
| 2 | OBI | 3 |
| 2.1 | OBI | 3 |
| 2.1.1 | Images | 3 |
| 2.1.2 | Bias | 3 |
| 2.1.3 | Parameters | 4 |
| 2.1.4 | Events | 4 |
| 2.2 | Compared Parameters | 5 |
| 2.3 | Aspect | 6 |
| 2.4 | Star Slots | 9 |
| 2.4.1 | Slot 3 | 9 |
| 2.4.2 | Slot 4 | 10 |
| 2.4.3 | Slot 5 | 11 |
| 2.4.4 | Slot 6 | 12 |
| 2.5 | FID Slots | 13 |
| 2.5.1 | Slot 0 | 13 |
| 2.5.2 | Slot 1 | 14 |
| 2.5.3 | Slot 2 | 15 |
| 3 | Point Sources | 16 |
| A | Summary | 17 |
| A.1 | Status | 17 |
| A.2 | Comments | 17 |

1 Front

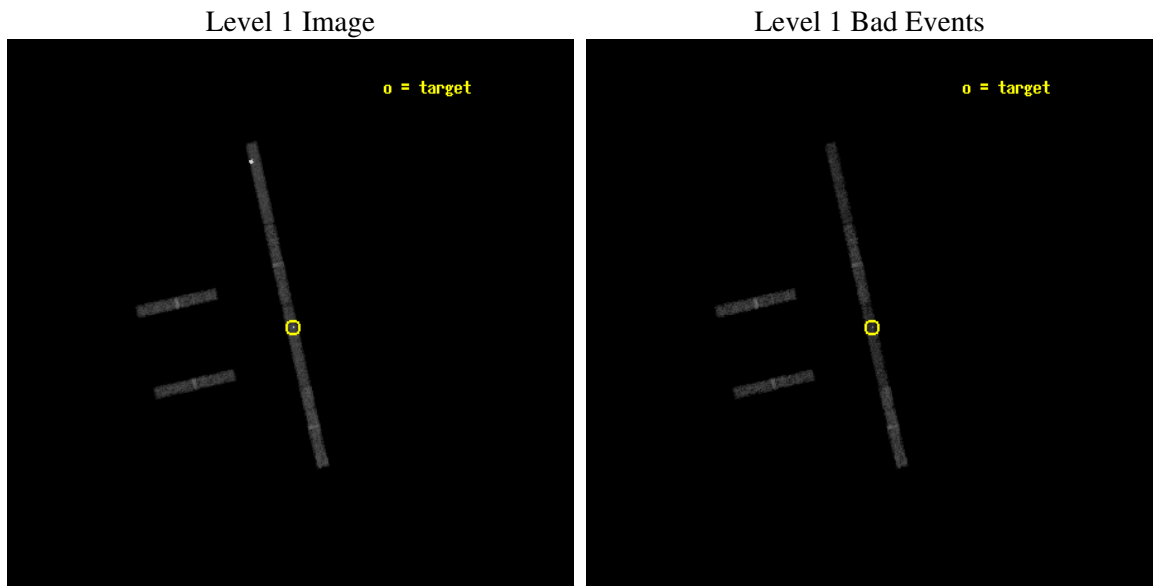
| | |
|----------|---|
| seq_num | 600162 |
| obs_id | 2028 |
| title | PROBING THE NATURE OF SUPER-LUMINOUS X-RAY SOURCES IN NEARBY GALAXIES |
| observer | Dr Timothy Roberts |
| object | NGC 5204 X-1 |
| dtcycle | 0 |
| cycle | P |
| ra_targ | 202.413333 |
| dec_targ | 58.416944 |
| ra_nom | 202.42070969497 |
| dec_nom | 58.425990790805 |
| roll_nom | 77.325686282214 |
| revision | 3 |
| ontime | 10145.800043195 |
| livetime | 9583.9091415265 |
| ontime2 | 10145.800043195 |
| ontime3 | 10145.800043195 |
| ontime5 | 10145.800043195 |
| ontime6 | 10145.800043195 |
| ontime7 | 10145.800043195 |
| ontime8 | 10145.800043195 |
| l2events | 17564 |



2 OBI

2.1 OBI

2.1.1 Images



2.1.2 Bias

Chip 2

Chip 3

Chip 5



Chip 6

Chip 7

Chip 8



2.1.3 Parameters

| | |
|----------|---------------------|
| obi_num | 0 |
| ascdsver | 7.6.9 |
| caldsver | 3.2.3 |
| date | 2006-11-02T19:08:52 |
| revision | 3 |

| | |
|----------------|-----------------|
| sched_exp_time | 10000.000000 |
| ontime | 11451.146669254 |
| ontime2 | 11451.146669254 |
| ontime3 | 11451.887679324 |
| ontime5 | 11451.146669254 |
| ontime6 | 11451.146669254 |
| ontime7 | 11451.146669254 |
| ontime8 | 11451.887679324 |
| l1events | 100619 |

2.1.4 Events

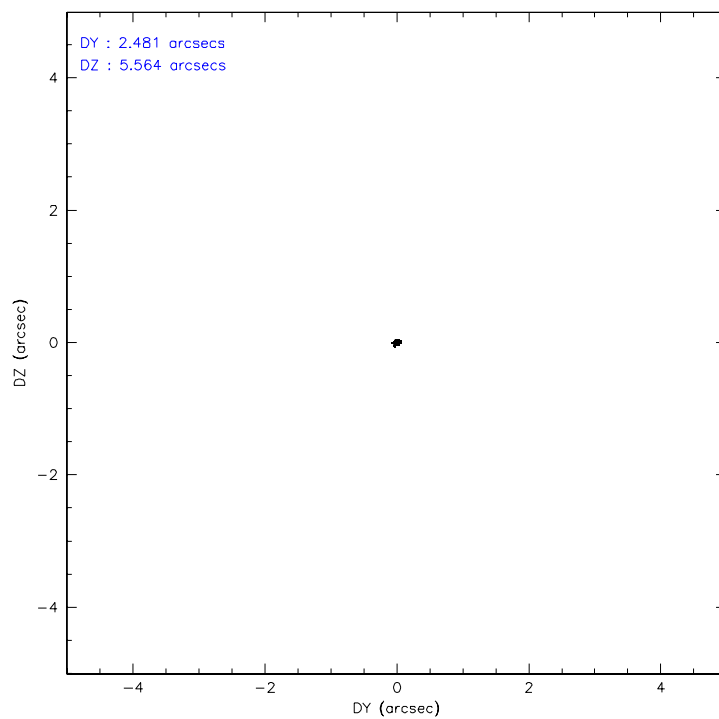
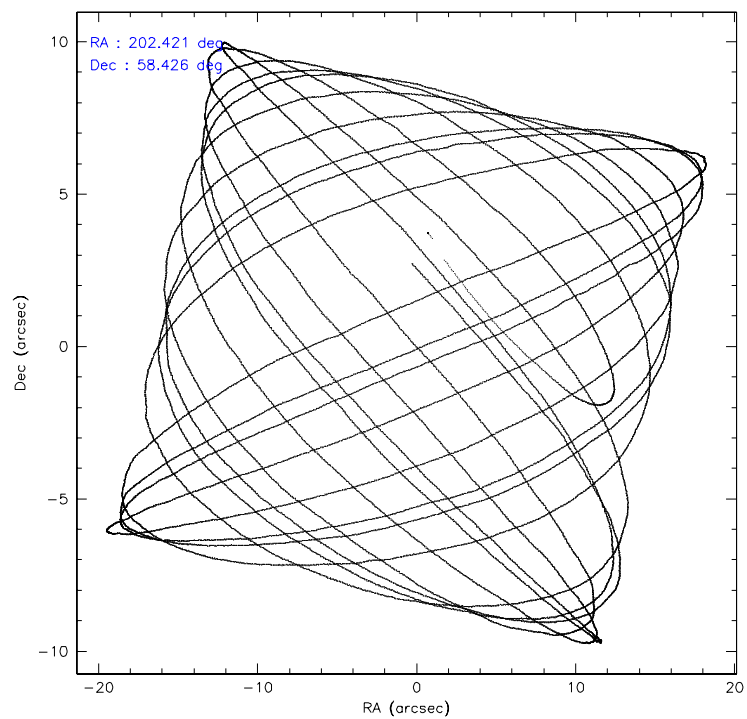
| | ccd 2 | ccd 3 | ccd 5 | ccd 6 | ccd 7 | ccd 8 |
|-----------------|-------|-------|-------|-------|-------|-------|
| level 1 events | 13643 | 11881 | 28173 | 12895 | 17473 | 16554 |
| rejected events | 12579 | 10796 | 9482 | 11723 | 8197 | 14279 |
| rejected % | 92% | 90% | 33% | 90% | 46% | 86% |

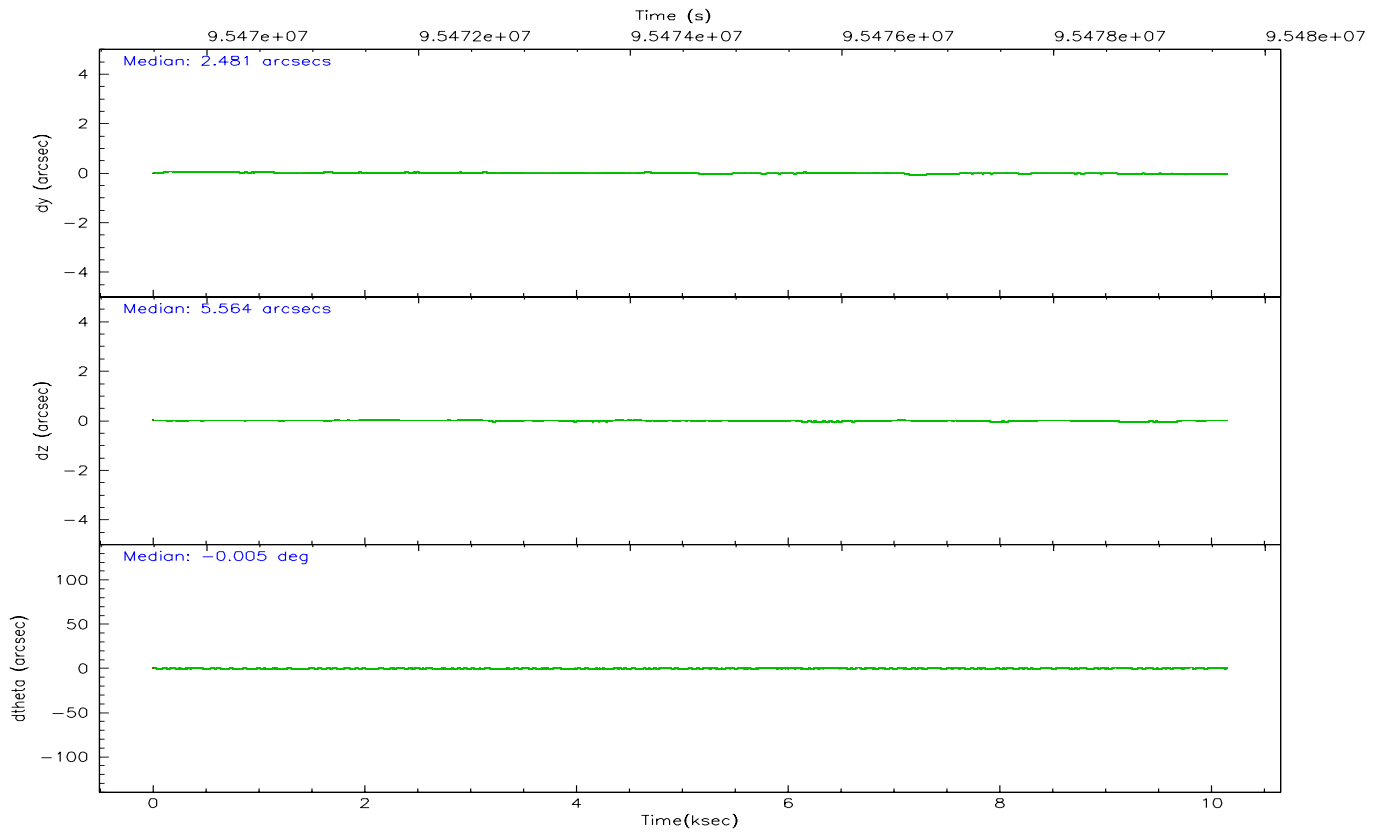
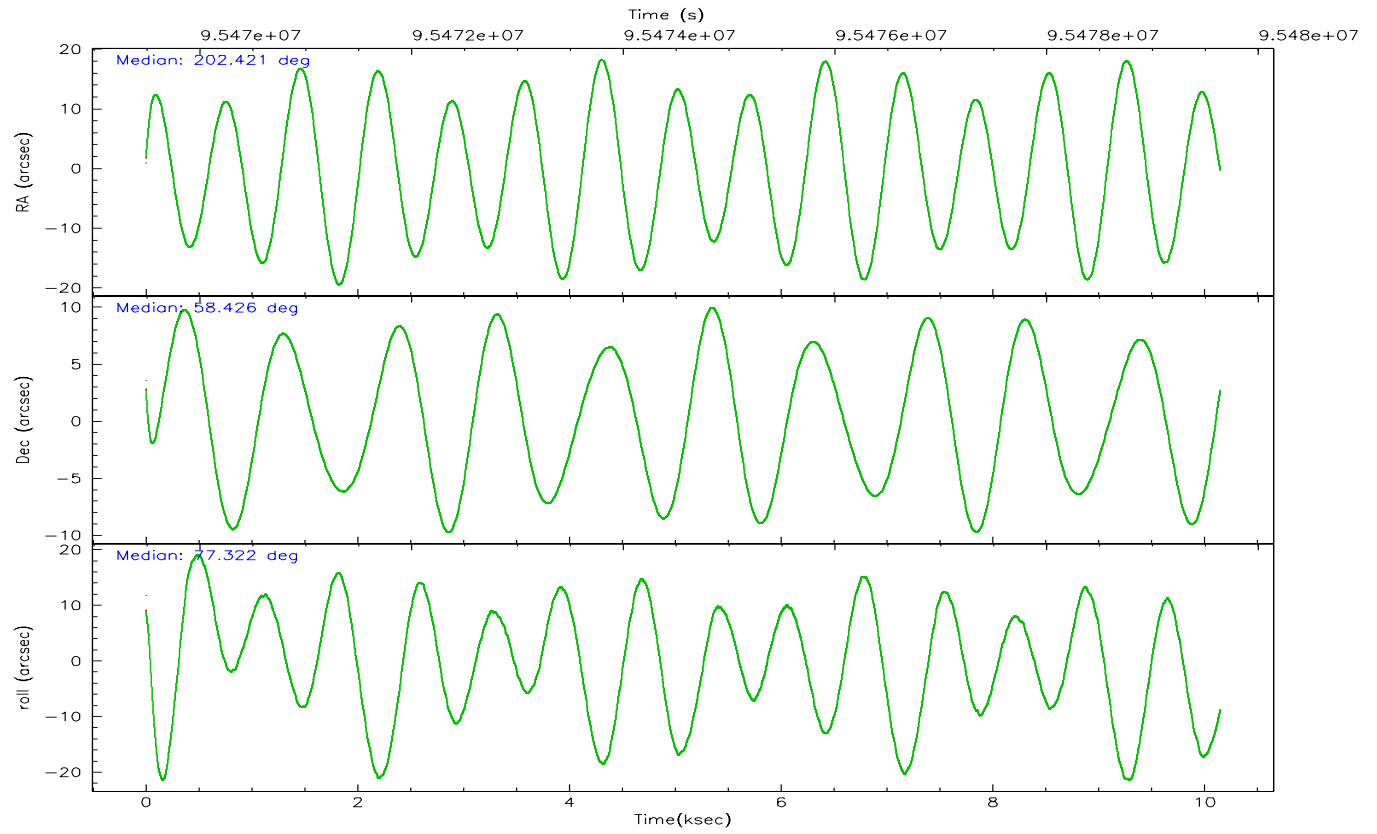
| | ccd 2 | ccd 3 | ccd 5 | ccd 6 | ccd 7 | ccd 8 |
|----------------|-------|-------|-------|-------|-------|-------|
| grade 0 events | 395 | 410 | 7788 | 478 | 1881 | 721 |
| | 2% | 3% | 27% | 3% | 10% | 4% |
| grade 1 events | 4 | 1 | 50 | 1 | 37 | 4 |
| | 0% | 0% | 0% | 0% | 0% | 0% |
| grade 2 events | 193 | 199 | 8147 | 187 | 2464 | 409 |
| | 1% | 1% | 28% | 1% | 14% | 2% |
| grade 3 events | 215 | 213 | 269 | 222 | 1010 | 393 |
| | 1% | 1% | 0% | 1% | 5% | 2% |
| grade 4 events | 211 | 197 | 996 | 217 | 991 | 357 |
| | 1% | 1% | 3% | 1% | 5% | 2% |
| grade 5 events | 320 | 326 | 678 | 396 | 1045 | 452 |
| | 2% | 2% | 2% | 3% | 5% | 2% |
| grade 6 events | 195 | 200 | 3773 | 210 | 3543 | 709 |
| | 1% | 1% | 13% | 1% | 20% | 4% |
| grade 7 events | 12110 | 10335 | 6472 | 11184 | 6502 | 13509 |
| | 88% | 86% | 22% | 86% | 37% | 81% |

2.2 Compared Parameters

| Parameter | Planned | Actual | Parameter | Planned | Actual |
|-----------------------------------|---------------------|----------------------|---------------------------------------|-----------|---------|
| Instrument | ACIS | ACIS | Obspar format version number | 6 | 6 |
| Detector | ACIS-235678 | ACIS-235678 | Obspar file type | PREDICTED | ACTUAL |
| Grating | NONE | NONE | Obspar update status | NONE | UPDATED |
| Data mode | FAINT | FAINT | Number of optional ACIS chips dropped | 0 | 0 |
| Observation mode | POINTING | POINTING | On-chip summing requested | N | N |
| Pointing RA | 202.436632 | 202.4207096949689 | Subarray requested | 1/8 | 1/8 |
| Pointing Dec | 58.399971 | 58.42599079080495 | Subarray start row | 0 | 449 |
| Pointing Roll | 77.155460 | 77.3256862822137 | Subarray row count | 1024 | 128 |
| SIM focus pos (mm) | -0.684267 | -0.6828225247311905 | Alternating exposures requested | N | N |
| SIM defocus (mm) | 0 | 0.001444936568705701 | Primary exposure time | 0.000000 | 0.7 |
| SIM translation stage pos (mm) | -190.132523 | -190.1400660498719 | | | |
| SIM translation stage offset (mm) | 0 | 0.00754346686406393 | | | |
| Observation start time | 95469637.184000 | 95468186.06843799 | | | |
| Observation start date | 2001-01-09T23:19:33 | 2001-01-09T22:56:26 | | | |
| Observation end time | 95479637.184000 | 95480435.33140799 | | | |
| Observation end date | 2001-01-10T02:06:13 | 2001-01-10T02:20:35 | | | |
| Read mode | TIMED | TIMED | | | |

2.3 Aspect



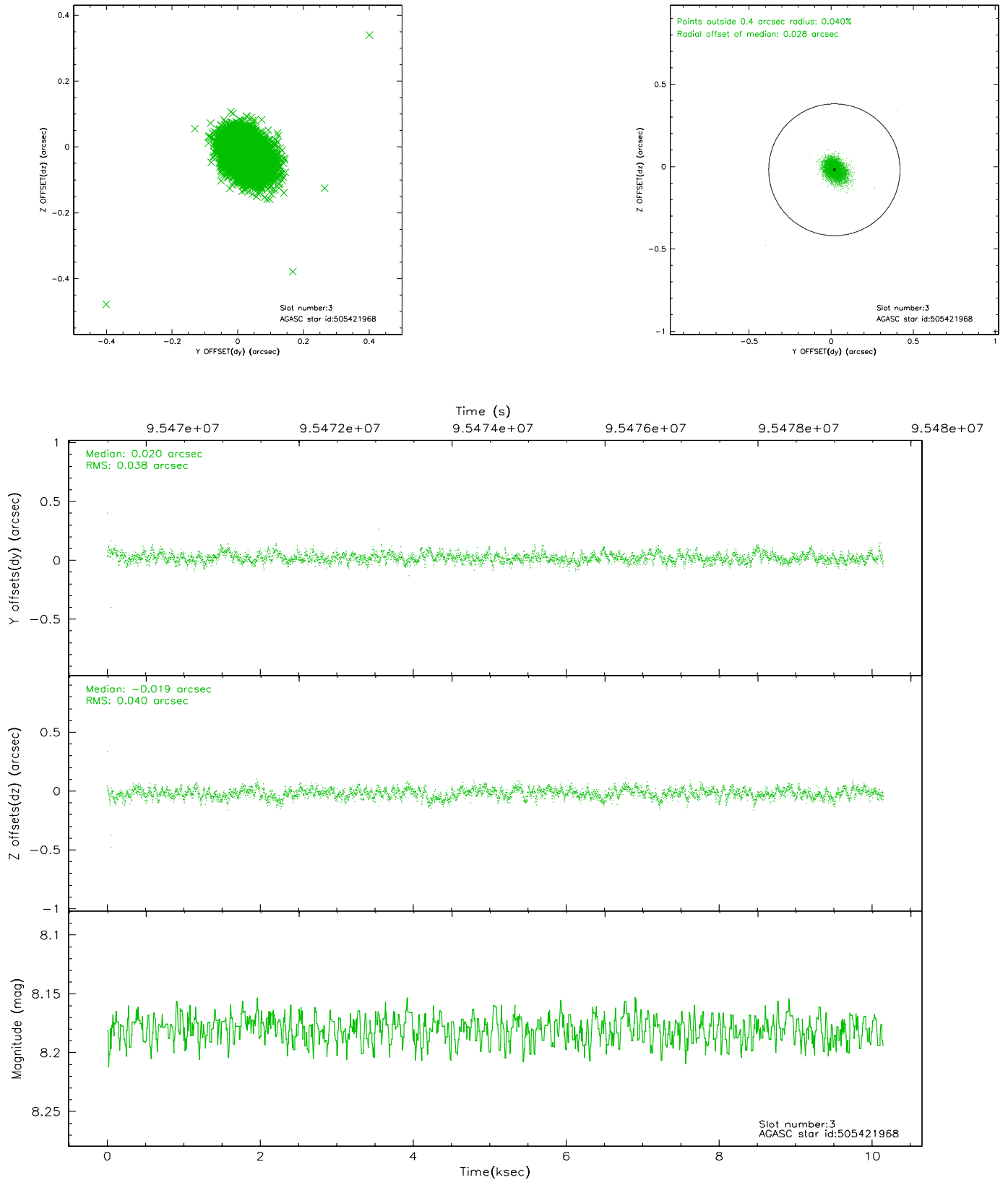


Slot Statistics

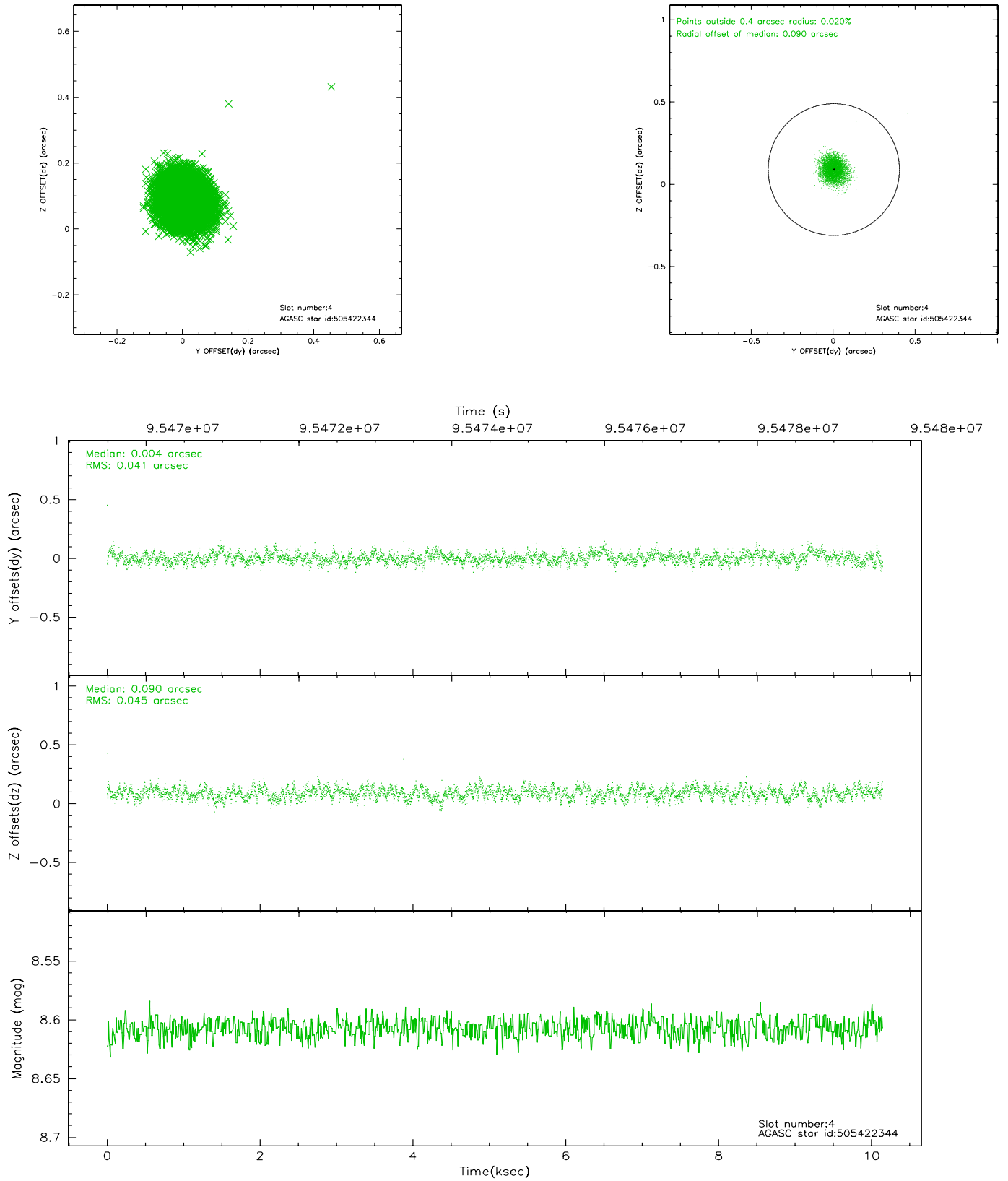
| slot | status | id | mag | n_pts | med_dy | med_dz | dr1 | dr2 | ra | dec | mean_y | mean_z |
|------|---------|-----------|------|-------|--------|--------|-------|-------|------------|-----------|----------|----------|
| 0 | FID | ACIS-S-2 | 7.11 | 2476 | -0.031 | 0.022 | 0.006 | 0.010 | 0.000000 | 0.000000 | -755.11 | -1726.68 |
| 1 | FID | ACIS-S-4 | 7.21 | 2476 | -0.042 | 0.009 | 0.005 | 0.009 | 0.000000 | 0.000000 | 2157.89 | 181.31 |
| 2 | FID | ACIS-S-5 | 7.24 | 2476 | 0.043 | -0.022 | 0.006 | 0.010 | 0.000000 | 0.000000 | -1807.24 | 175.46 |
| 3 | GUIDE | 505421968 | 8.18 | 4951 | 0.020 | -0.019 | 0.057 | 0.094 | 202.022601 | 58.209270 | -841.54 | 614.36 |
| 4 | GUIDE | 505422344 | 8.61 | 4951 | 0.004 | 0.090 | 0.065 | 0.102 | 202.767077 | 57.846963 | -1798.84 | -1058.51 |
| 5 | GUIDE | 505421936 | 8.85 | 4950 | 0.116 | -0.014 | 0.077 | 0.139 | 201.854843 | 57.887820 | -2040.69 | 677.28 |
| 6 | GUIDE | 505418080 | 9.06 | 4947 | -0.137 | -0.057 | 0.077 | 0.121 | 201.533017 | 58.898788 | 1387.69 | 2041.12 |
| 7 | OMITTED | | 0.00 | 0 | 0.000 | 0.000 | 0.000 | 0.000 | 0.000000 | 0.000000 | 0.00 | 0.00 |

2.4 Star Slots

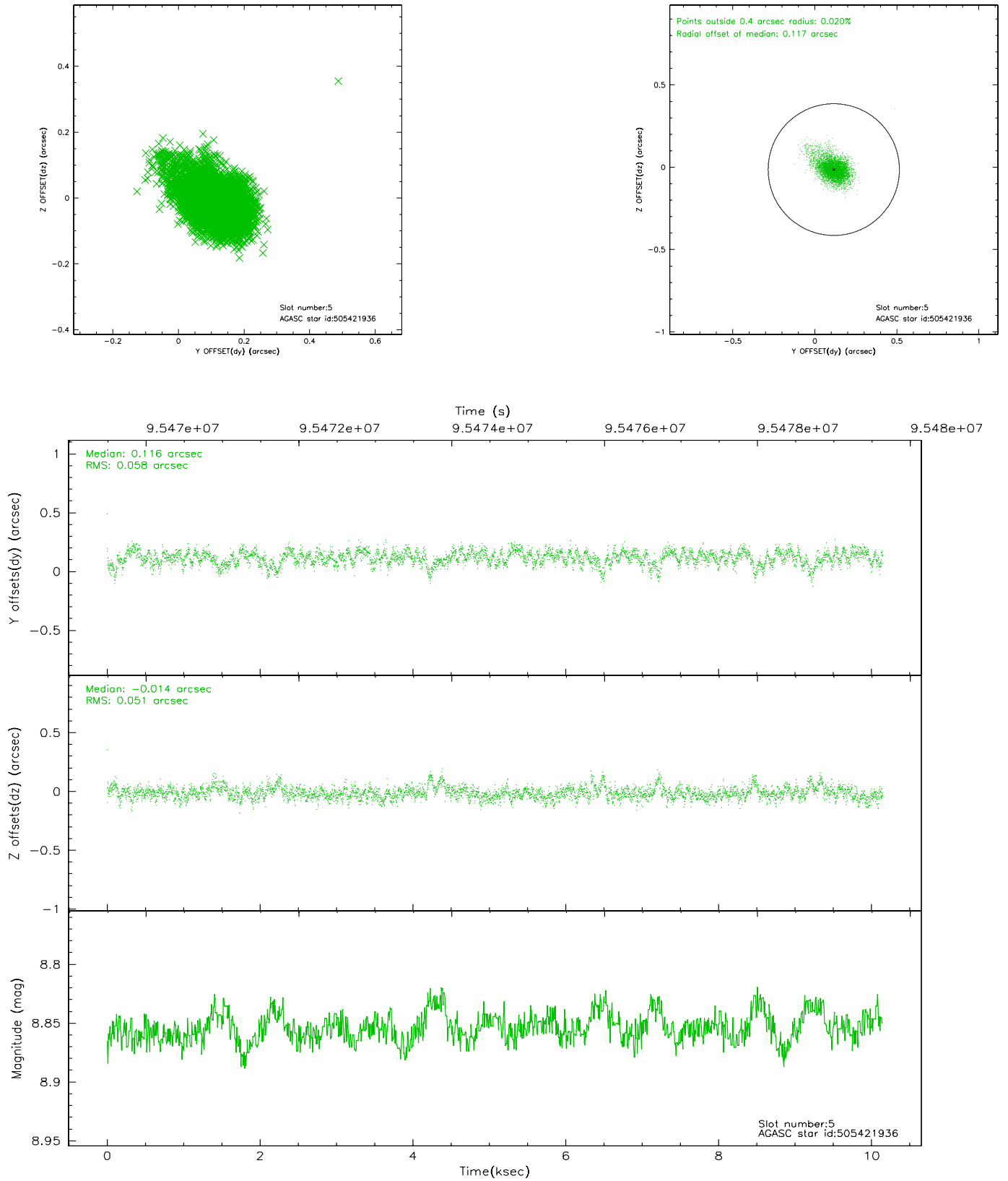
2.4.1 Slot 3



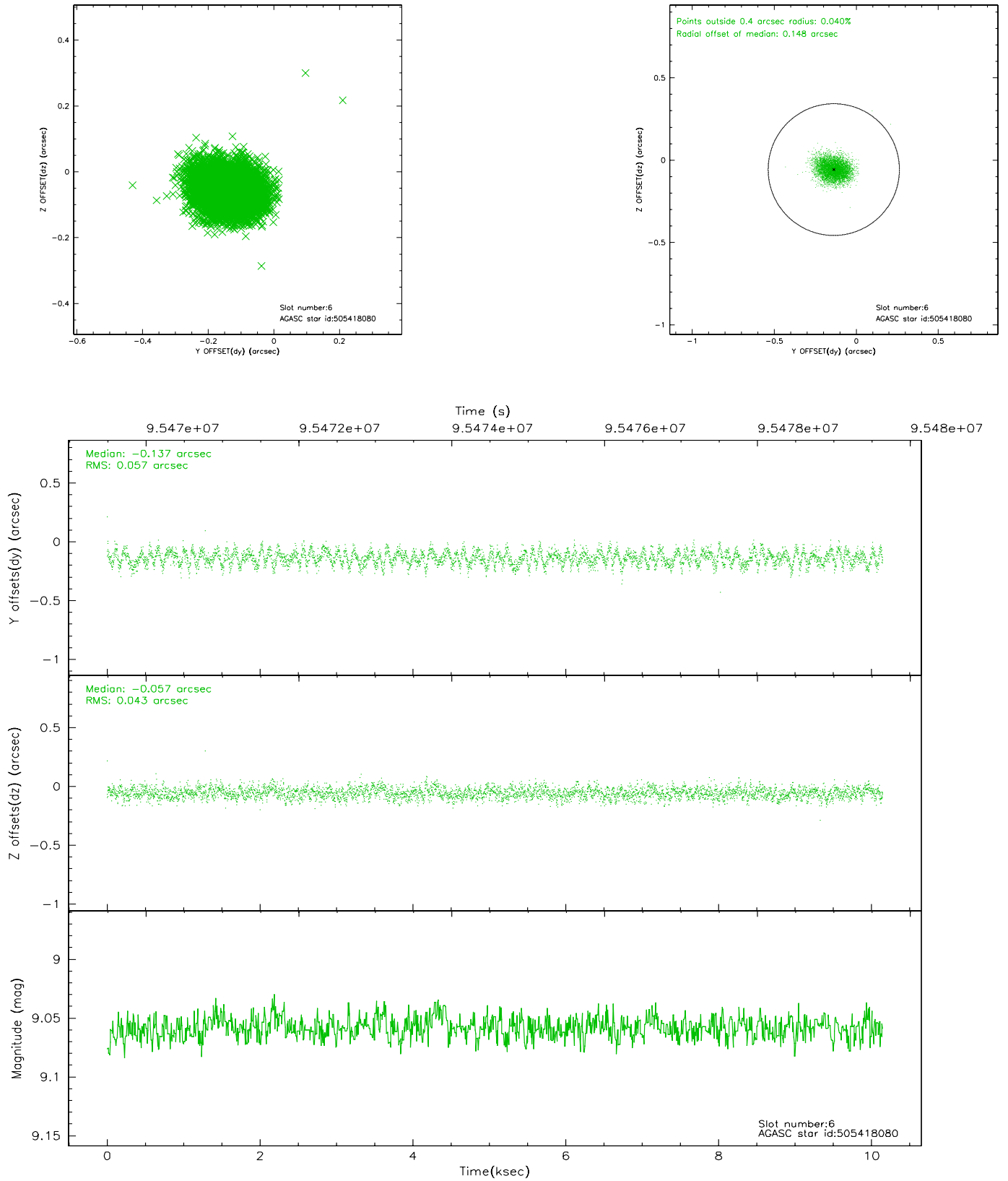
2.4.2 Slot 4



2.4.3 Slot 5

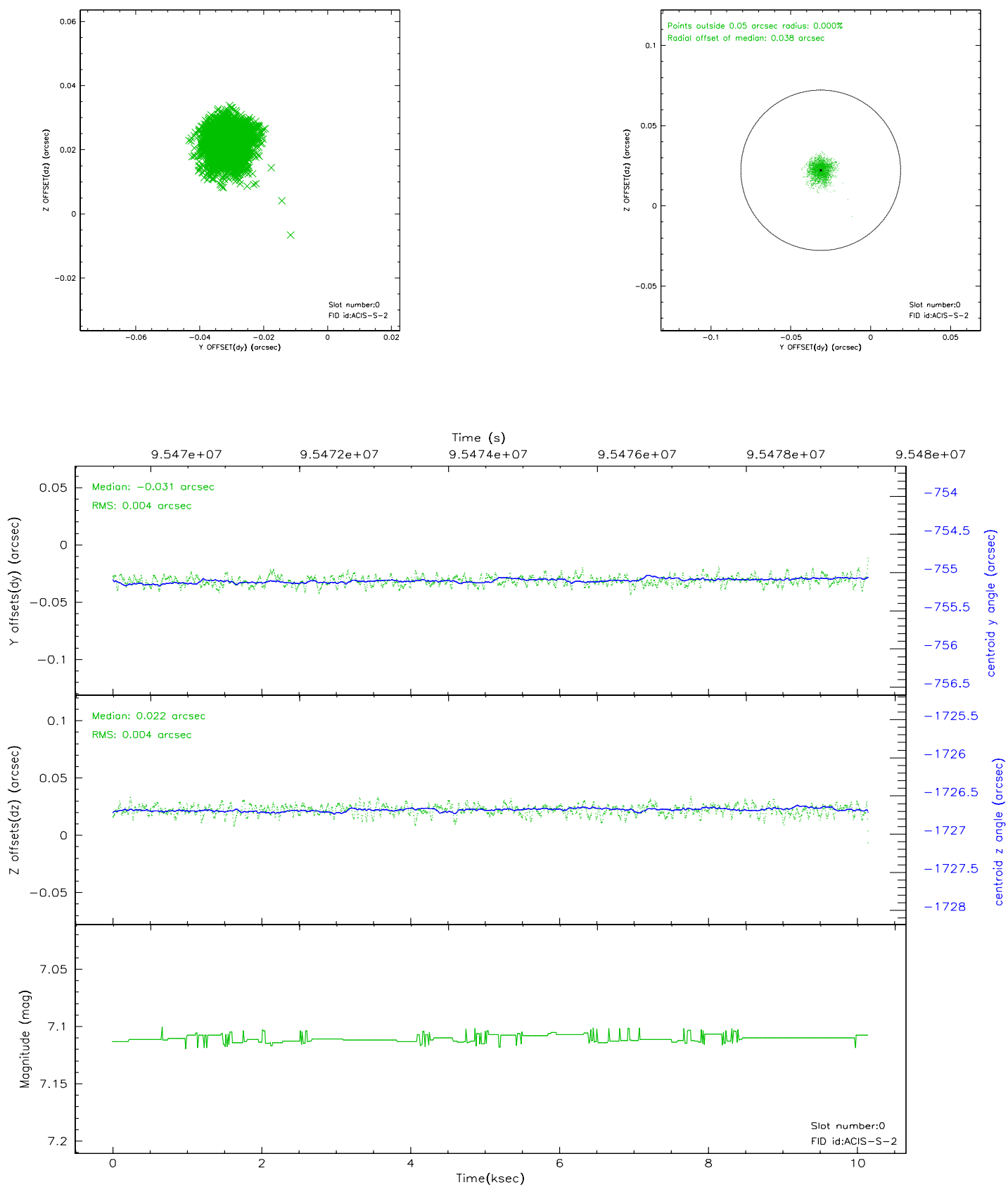


2.4.4 Slot 6

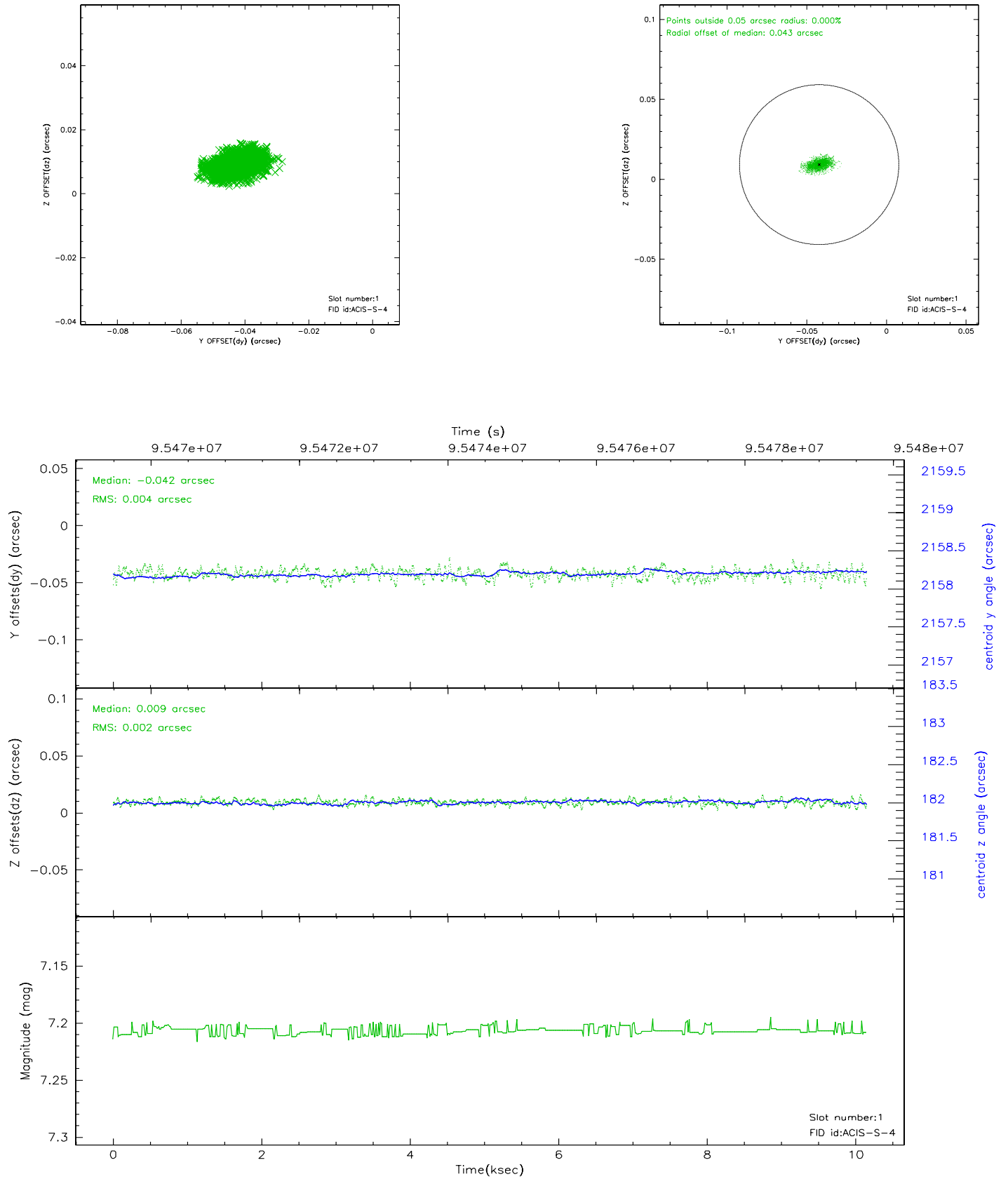


2.5 FID Slots

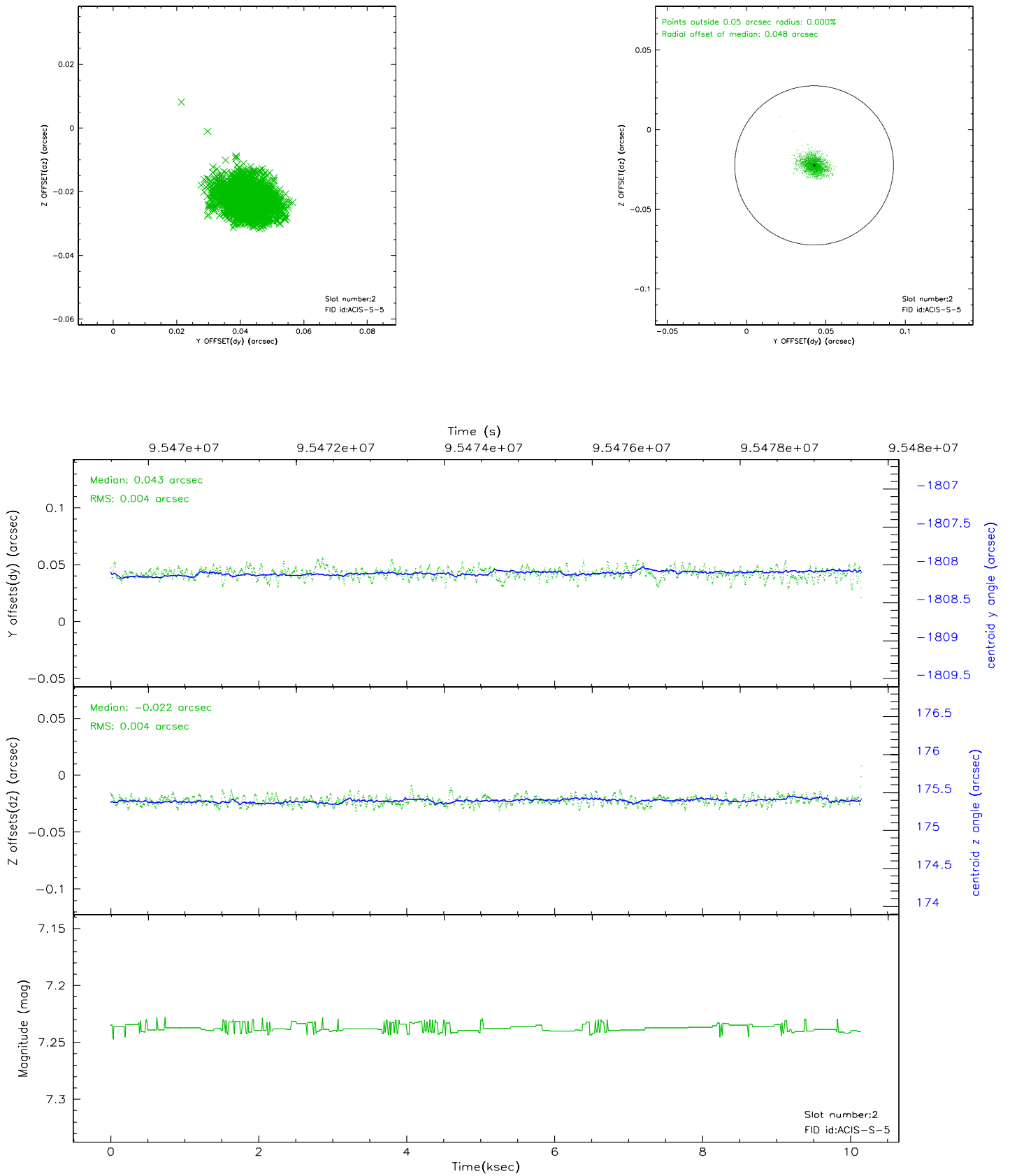
2.5.1 Slot 0



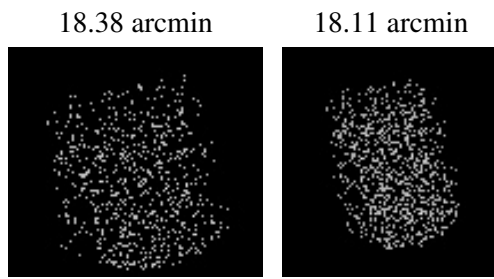
2.5.2 Slot 1



2.5.3 Slot 2



3 Point Sources



A Summary

A.1 Status

| | |
|----------------------------|------------|
| V&V Scientist | Jen Lauer |
| V&V Date (YYYY-MM-DD) | 2010.10.01 |
| V&V Edition | 2 |
| V&V Disposition and Status | OK |
| V&V Charge Time | 10.145 |

A.2 Comments

The guide star in slot 7 was manually excluded from the processing due to poor data quality.