

V&V Reference Report

L2 ASCDS Version : 7.6.9

Observation 2026 - L2 Version 001
Chandra X-Ray Center

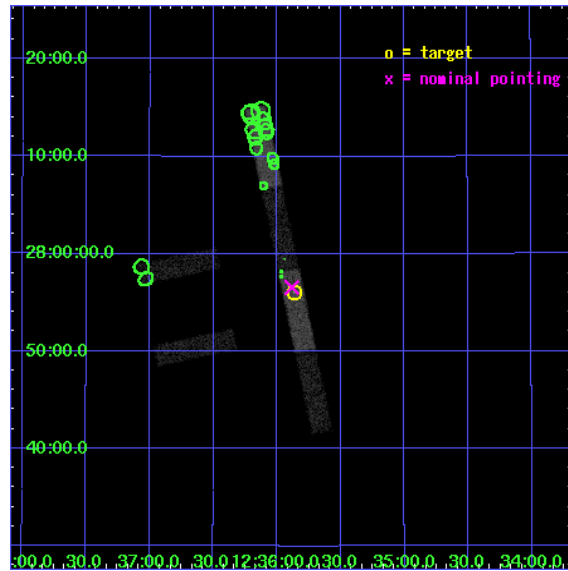
L2 Processing Date : Nov 2 2006

Contents

1	Front	2
2	OBI	3
2.1	OBI	3
2.1.1	Images	3
2.1.2	Bias	3
2.1.3	Parameters	4
2.1.4	Events	4
2.2	Compared Parameters	5
2.3	Aspect	6
2.4	Star Slots	9
2.4.1	Slot 3	9
2.4.2	Slot 4	10
2.4.3	Slot 5	11
2.4.4	Slot 6	12
2.4.5	Slot 7	13
2.5	FID Slots	14
2.5.1	Slot 0	14
2.5.2	Slot 1	15
2.5.3	Slot 2	16
3	Point Sources	17
A	Summary	18
A.1	Status	18
A.2	Comments	18

1 Front

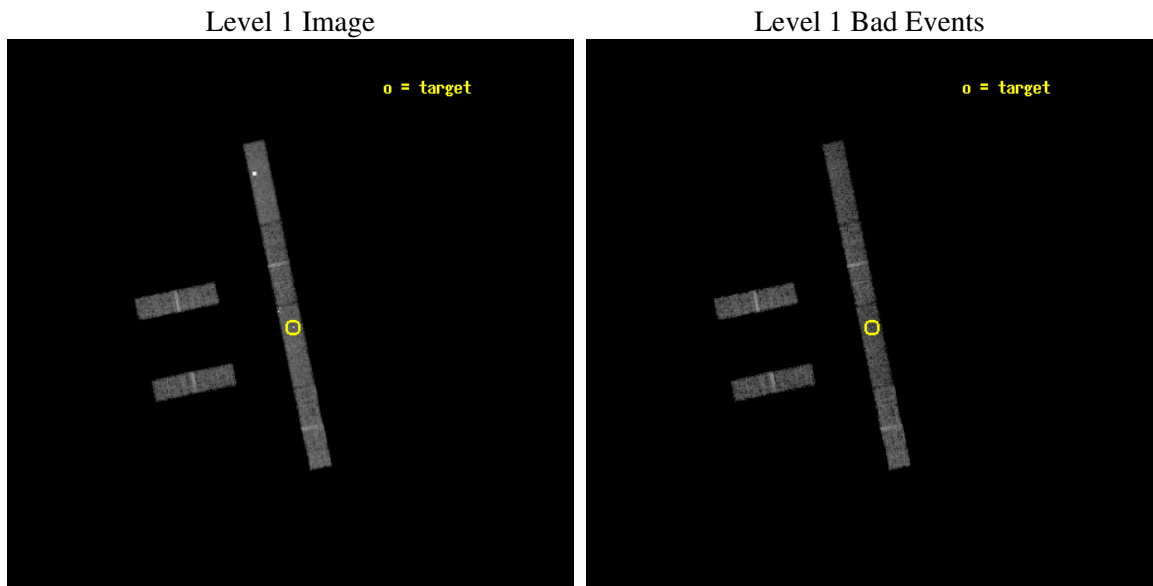
seq_num	600160
obs_id	2026
title	PROBING THE NATURE OF SUPER-LUMINOUS X-RAY SOURCES IN NEARBY GALAXIES
observer	Dr Timothy Roberts
object	NGC 4559 X-1
dtcycle	0
cycle	P
ra_targ	188.966667
dec_targ	27.933611
ra_nom	188.97088546298
dec_nom	27.94274482303
roll_nom	78.15852963667
revision	2
ontime	9725.0999473035
liveltime	9375.3154508465
ontime2	9725.0999473035
ontime3	9725.0999473035
ontime5	9725.0999473035
ontime6	9725.0999473035
ontime7	9725.0999473035
ontime8	9725.0999473035
l2events	27274



2 OBI

2.1 OBI

2.1.1 Images

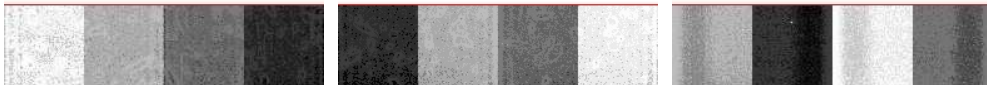


2.1.2 Bias

Chip 2

Chip 3

Chip 5



Chip 6

Chip 7

Chip 8



2.1.3 Parameters

obi_num	0
ascdsver	7.6.9
caldbver	3.2.3
date	2006-11-02T21:14:48
revision	2

sched_exp_time	9500.000000
ontime	10042.163555637
ontime2	10042.163555637
ontime3	10042.163555637
ontime5	10042.163555637
ontime6	10042.163555637
ontime7	10042.163555637
ontime8	10042.163555637
l1events	136440

2.1.4 Events

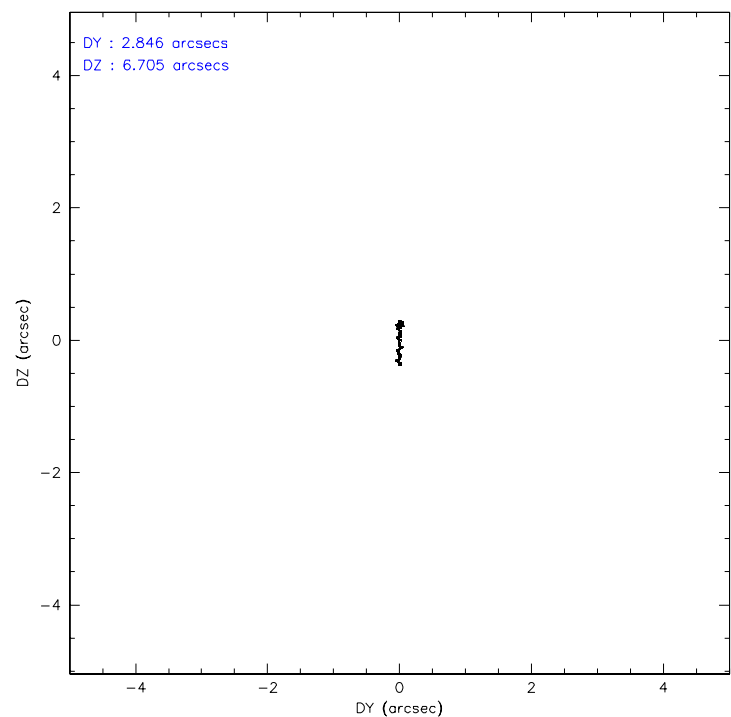
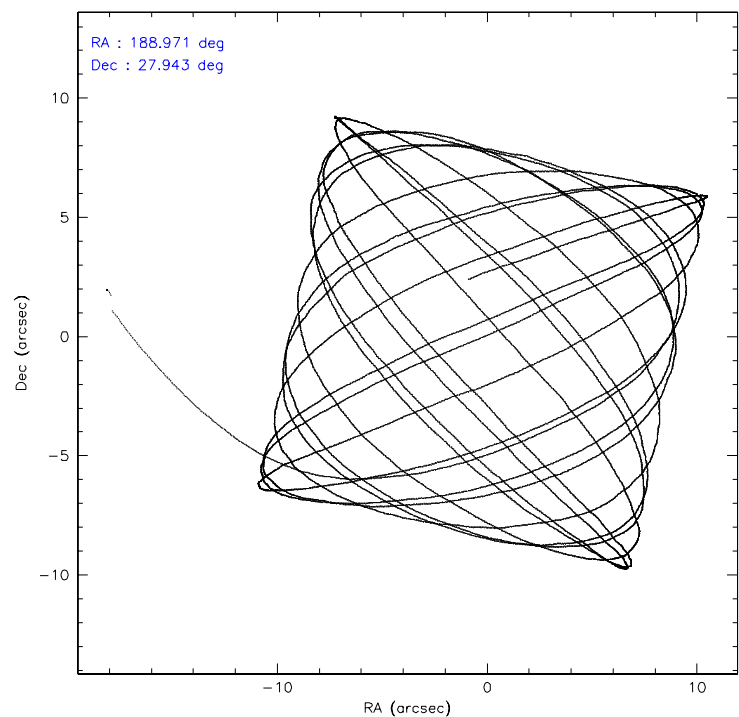
	ccd 2	ccd 3	ccd 5	ccd 6	ccd 7	ccd 8
level 1 events	20981	17992	30553	19211	23272	24431
rejected events	18769	15885	12752	16819	12605	20137
rejected %	89%	88%	41%	87%	54%	82%

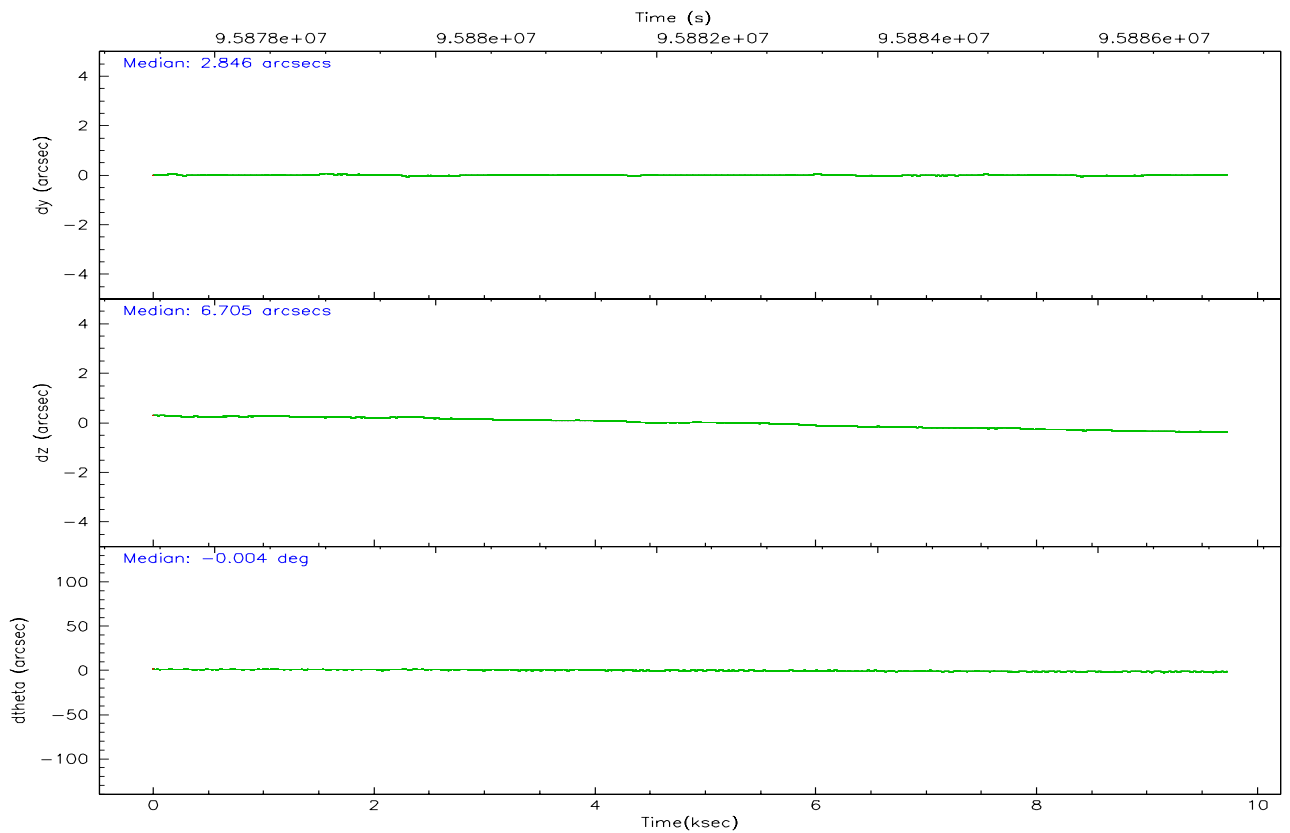
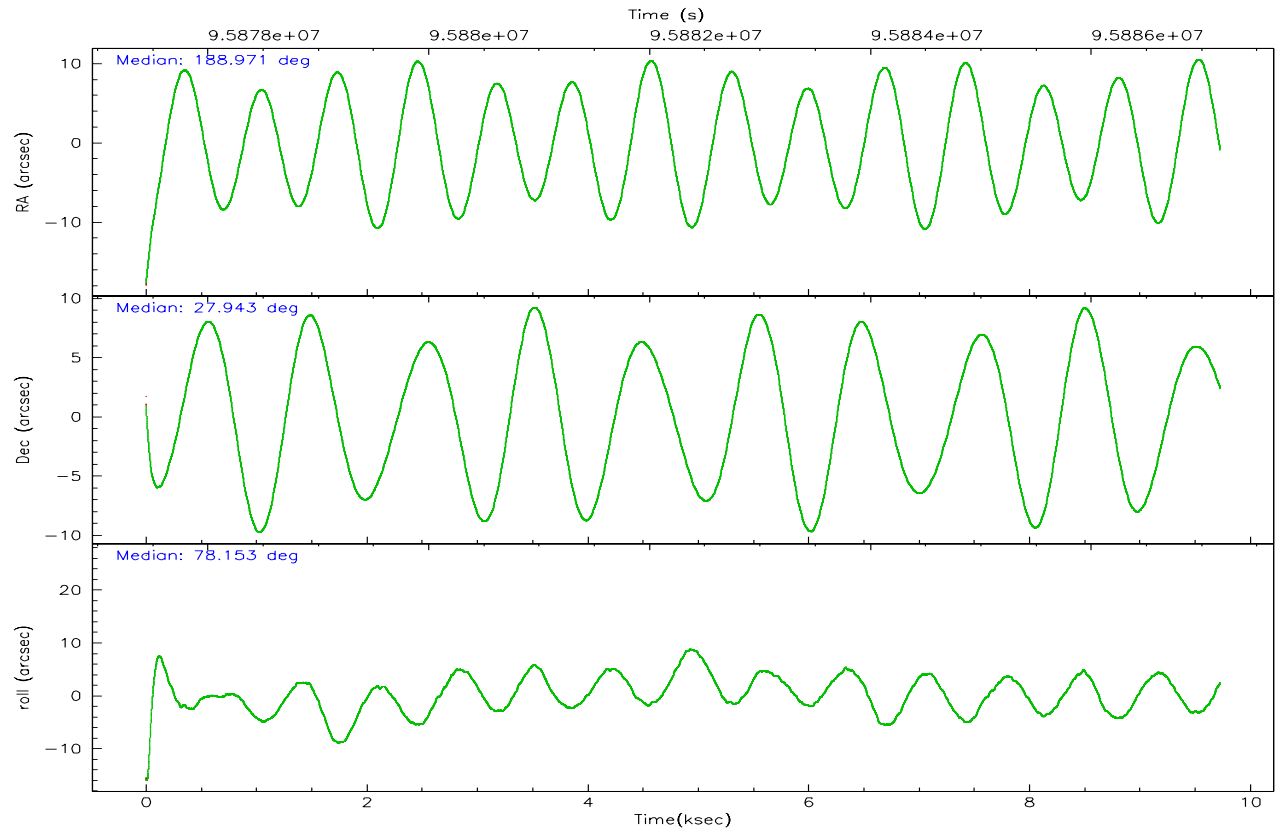
	ccd 2	ccd 3	ccd 5	ccd 6	ccd 7	ccd 8
grade 0 events	887	854	8682	983	1368	1350
	4%	4%	28%	5%	5%	5%
grade 1 events	6	5	35	9	16	9
	0%	0%	0%	0%	0%	0%
grade 2 events	474	396	3509	498	2727	923
	2%	2%	11%	2%	11%	3%
grade 3 events	296	296	396	337	852	508
	1%	1%	1%	1%	3%	2%
grade 4 events	269	298	351	273	850	503
	1%	1%	1%	1%	3%	2%
grade 5 events	538	543	1100	647	1487	791
	2%	3%	3%	3%	6%	3%
grade 6 events	347	344	5445	379	5151	1167
	1%	1%	17%	1%	22%	4%
grade 7 events	18164	15256	11035	16085	10821	19180
	86%	84%	36%	83%	46%	78%

2.2 Compared Parameters

Parameter	Planned	Actual	Parameter	Planned	Actual
Instrument	ACIS	ACIS	Obspar format version number	6	6
Detector	ACIS-235678	ACIS-235678	Obspar file type	PREDICTED	ACTUAL
Grating	NONE	NONE	Obspar update status	NONE	UPDATED
Data mode	FAINT	FAINT	Number of optional ACIS chips dropped	0	0
Observation mode	POINTING	POINTING	On-chip summing requested	N	N
Pointing RA	188.980757	188.9708854629809	Subarray requested	1/4	1/4
Pointing Dec	27.916824	27.94274482303027	Subarray start row	0	385
Pointing Roll	77.997312	78.1585296366698	Subarray row count	1024	256
SIM focus pos (mm)	-0.684267	-0.6828225247311905	Alternating exposures requested	N	N
SIM defocus (mm)	0	0.001444936568705701	Primary exposure time	0.000000	1.1
SIM translation stage pos (mm)	-190.132523	-190.1425803651734			
SIM translation stage offset (mm)	0	0.01005778216563158			
Observation start time	95877667.184000	95876679.334116			
Observation start date	2001-01-14T16:40:03	2001-01-14T16:24:39			
Observation end time	95887167.184000	95887655.034537			
Observation end date	2001-01-14T19:18:23	2001-01-14T19:27:35			
Read mode	TIMED	TIMED			

2.3 Aspect



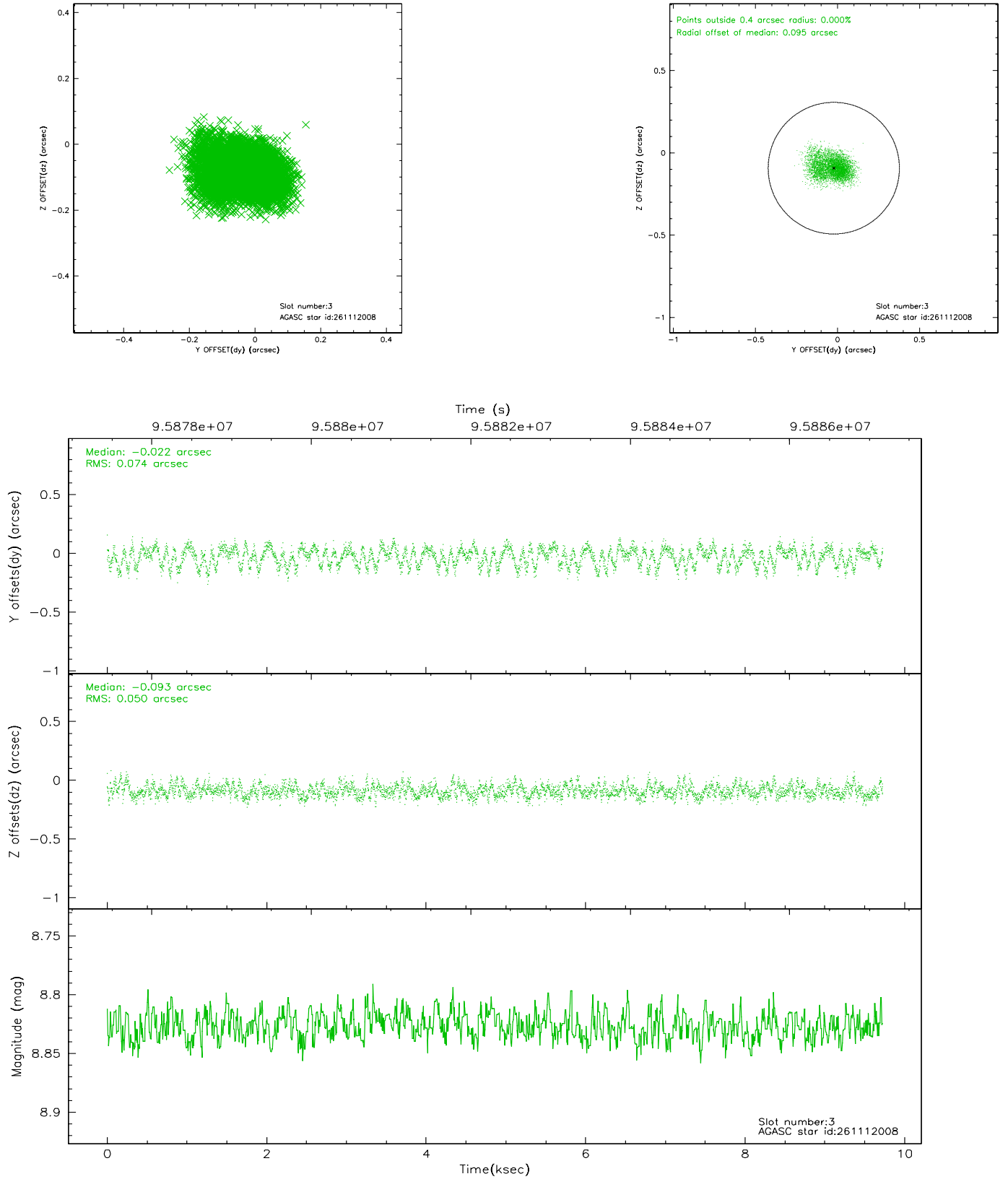


Slot Statistics

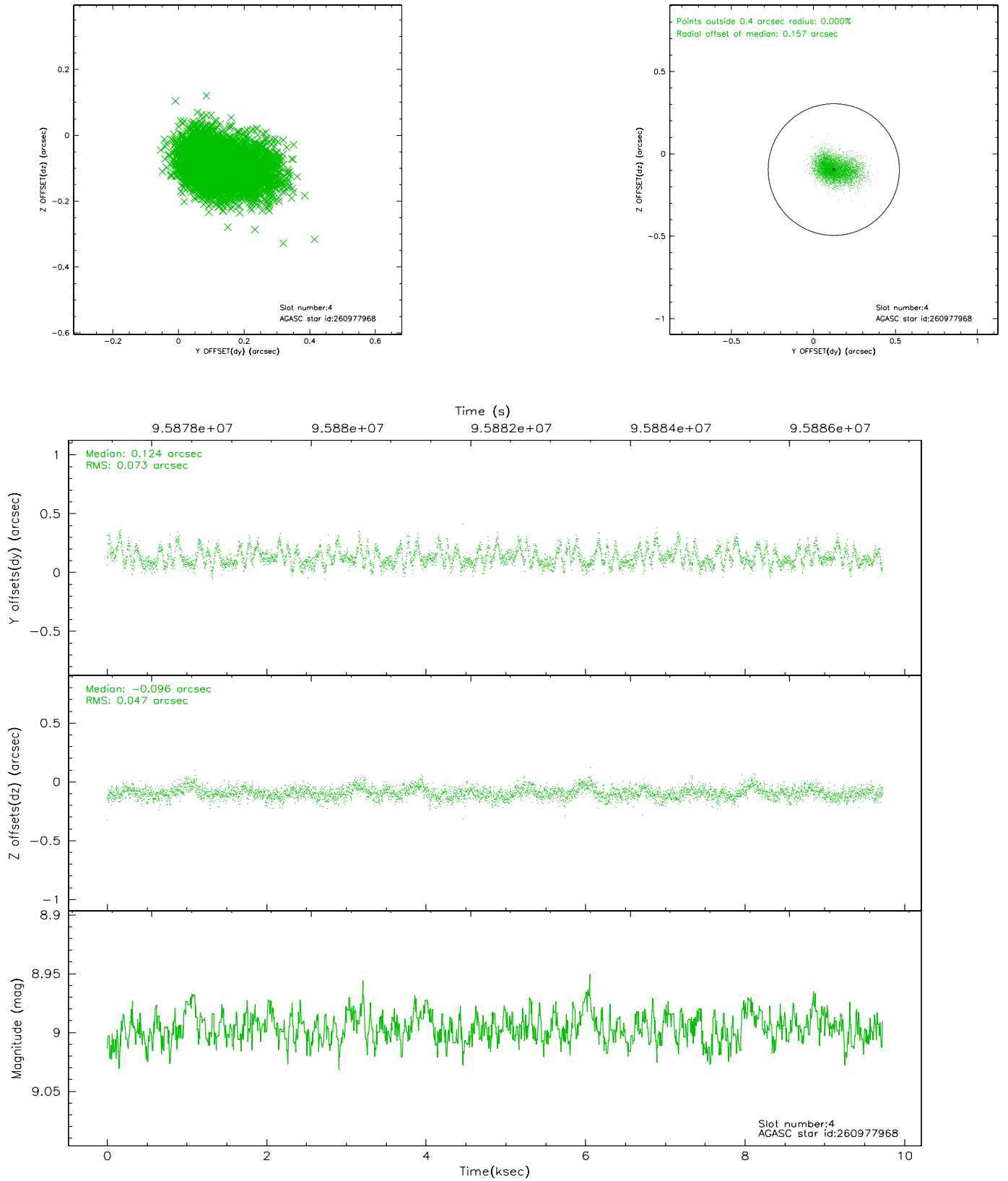
slot	status	id	mag	n_pts	med_dy	med_dz	dr1	dr2	ra	dec	mean_y	mean_z
0	FID	ACIS-S-2	7.11	2373	-0.003	0.039	0.010	0.018	0.000000	0.000000	-755.48	-1727.76
1	FID	ACIS-S-4	7.20	2373	-0.082	-0.008	0.008	0.014	0.000000	0.000000	2157.46	180.11
2	FID	ACIS-S-5	7.24	2373	0.053	-0.020	0.007	0.012	0.000000	0.000000	-1807.56	174.39
3	GUIDE	261112008	8.83	4746	-0.022	-0.093	0.095	0.154	188.403981	28.081490	202.83	1916.33
4	GUIDE	260977968	9.00	4745	0.124	-0.096	0.090	0.152	188.216909	27.552758	-1781.72	2114.20
5	GUIDE	261097656	9.10	4743	0.133	0.046	0.064	0.104	188.726234	27.455627	-1792.64	450.87
6	GUIDE	261101336	9.31	4746	-0.100	-0.034	0.080	0.129	188.594392	28.320780	1168.96	1500.91
7	GUIDE	261110376	9.69	4742	-0.135	0.172	0.114	0.181	189.377990	28.226023	1352.97	-999.61

2.4 Star Slots

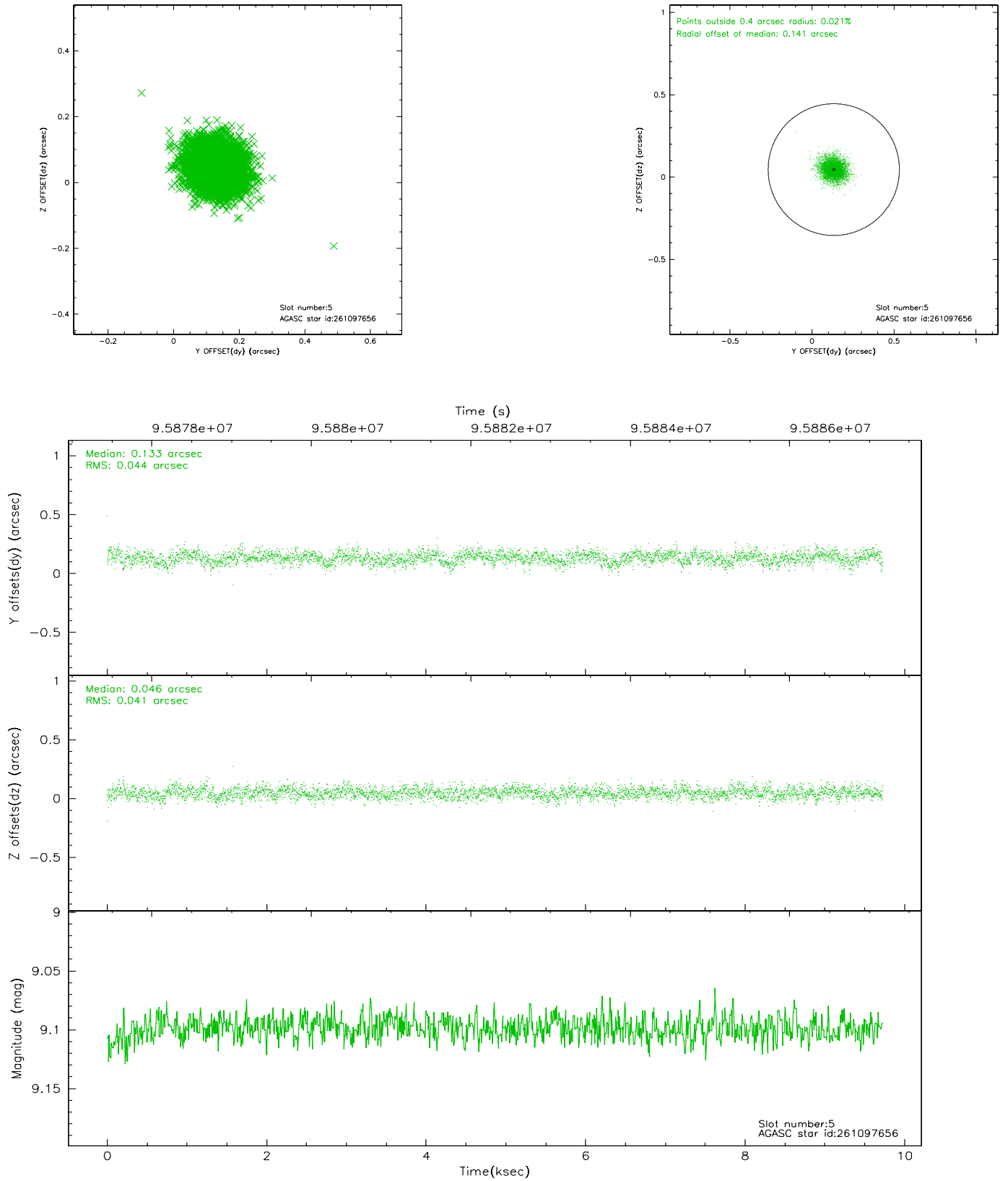
2.4.1 Slot 3



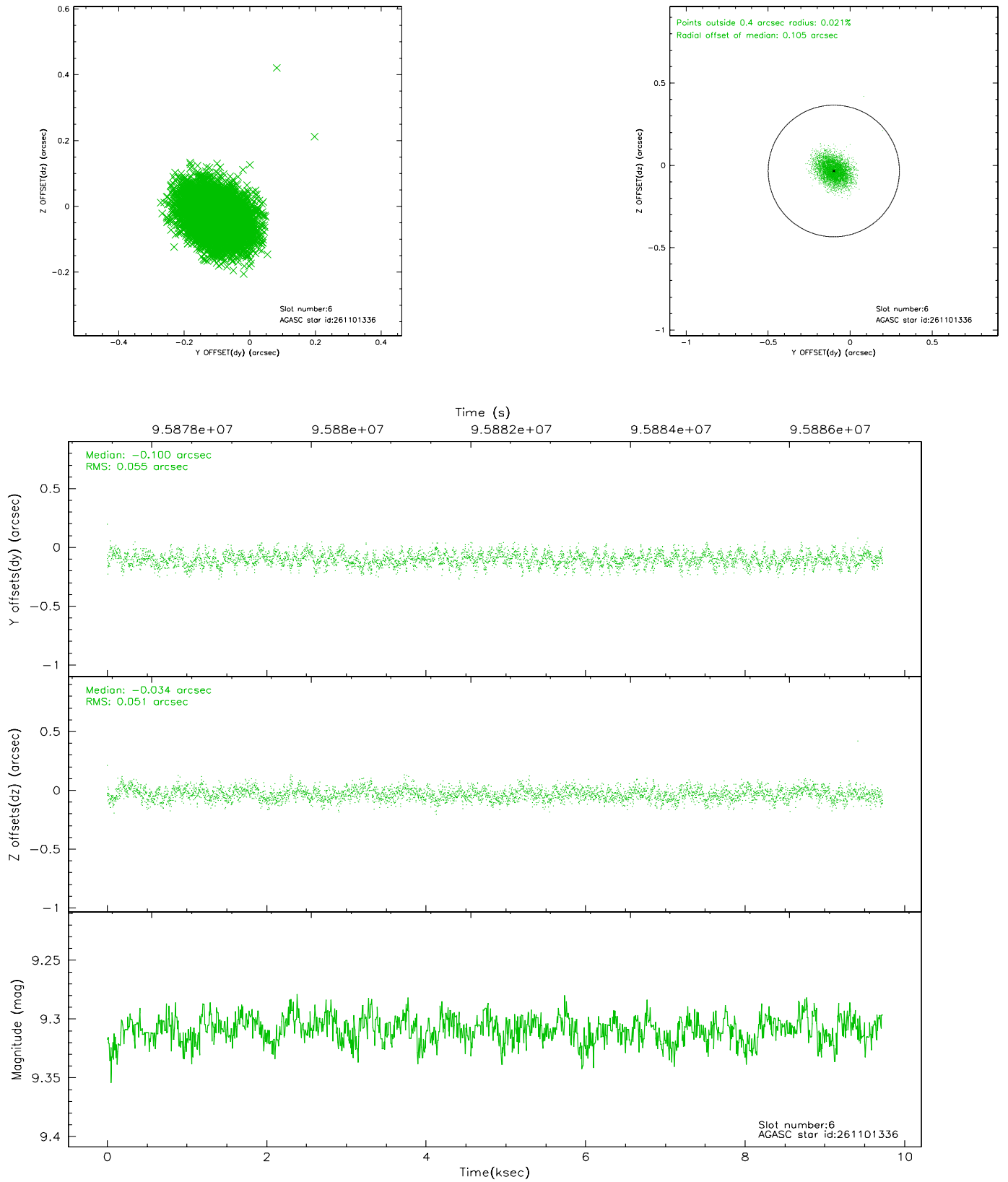
2.4.2 Slot 4



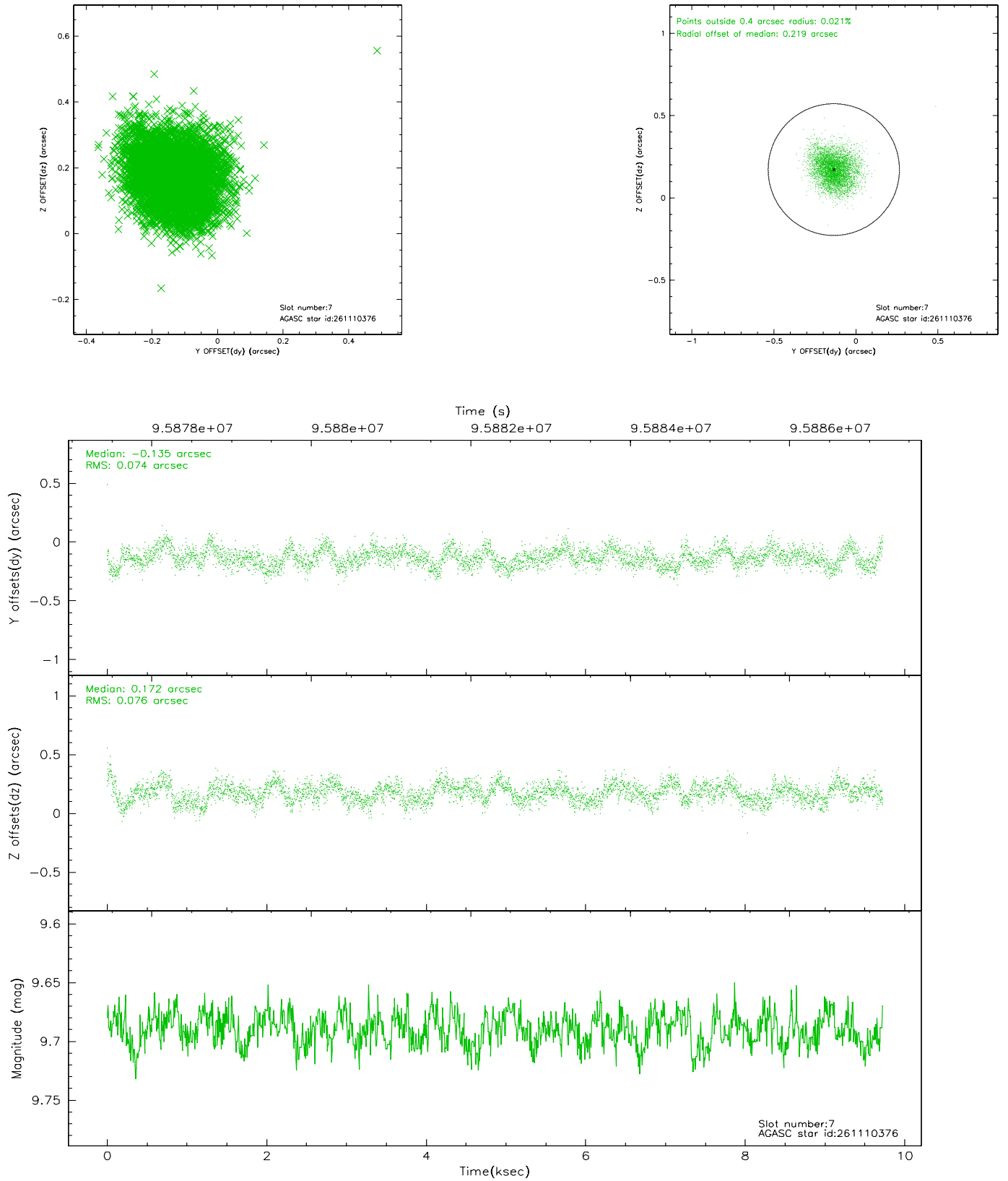
2.4.3 Slot 5



2.4.4 Slot 6

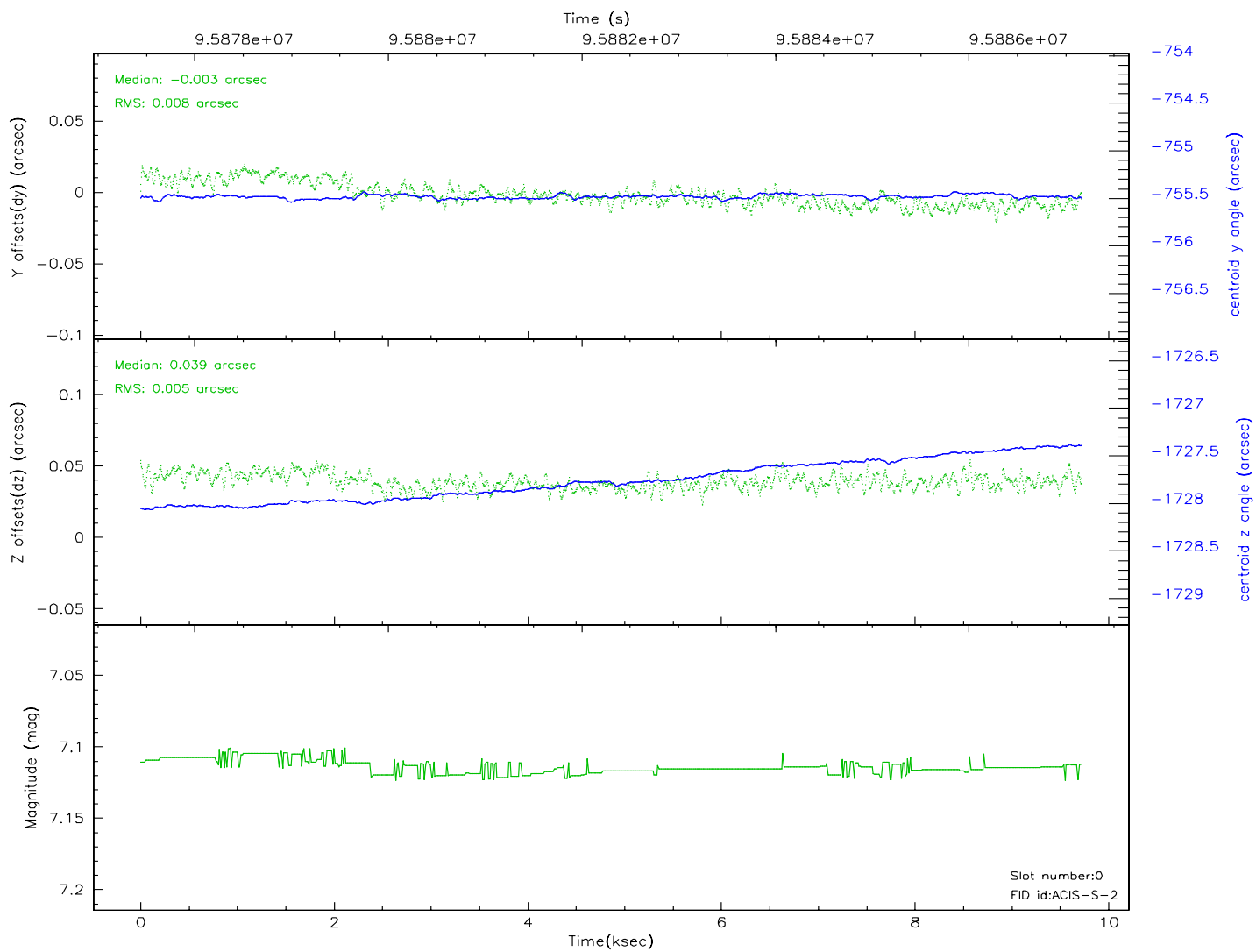
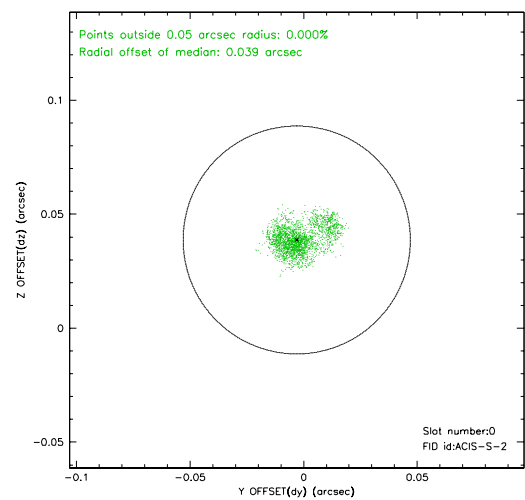
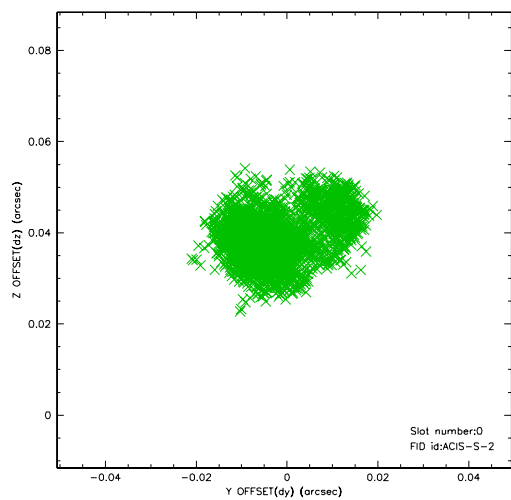


2.4.5 Slot 7

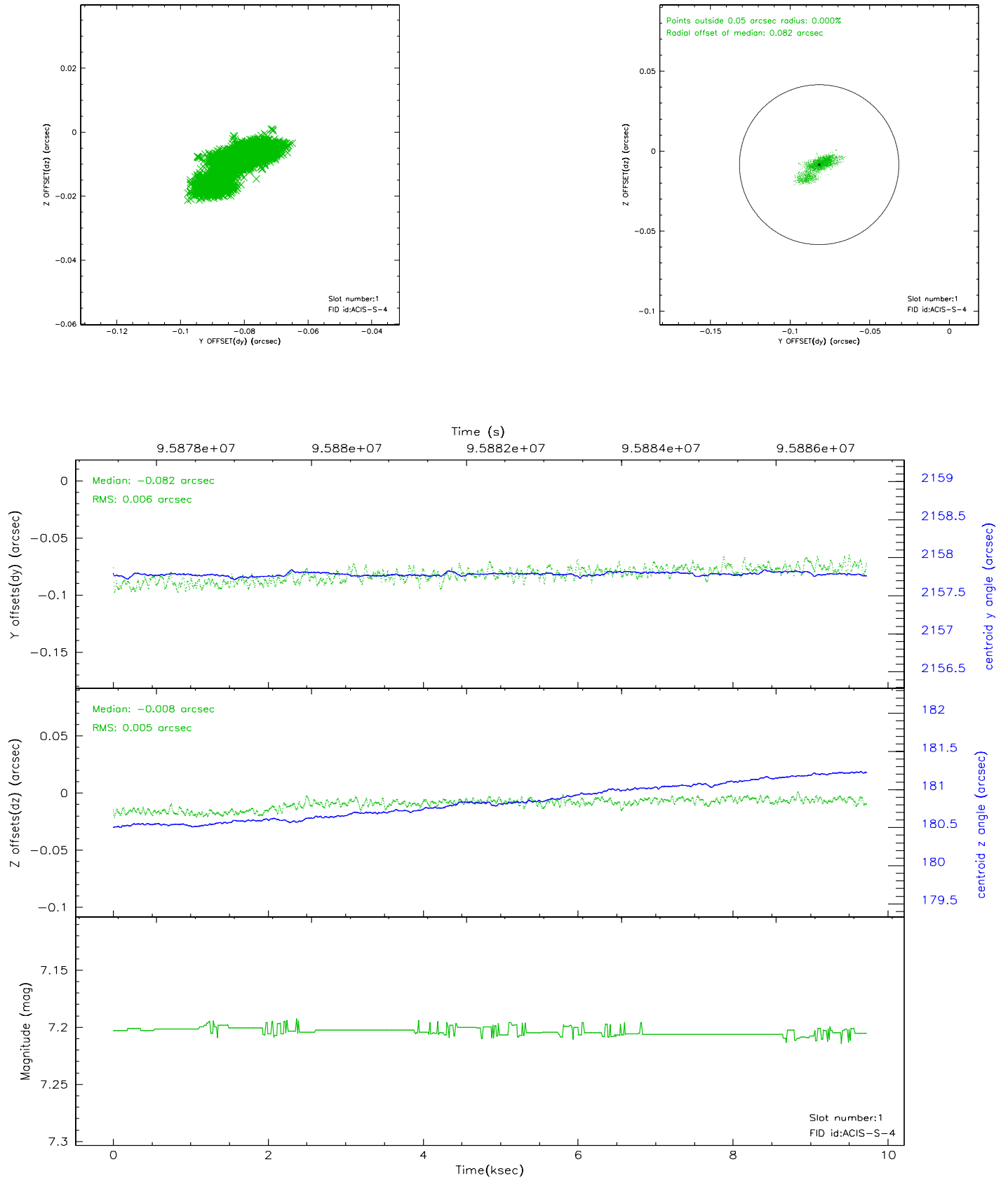


2.5 FID Slots

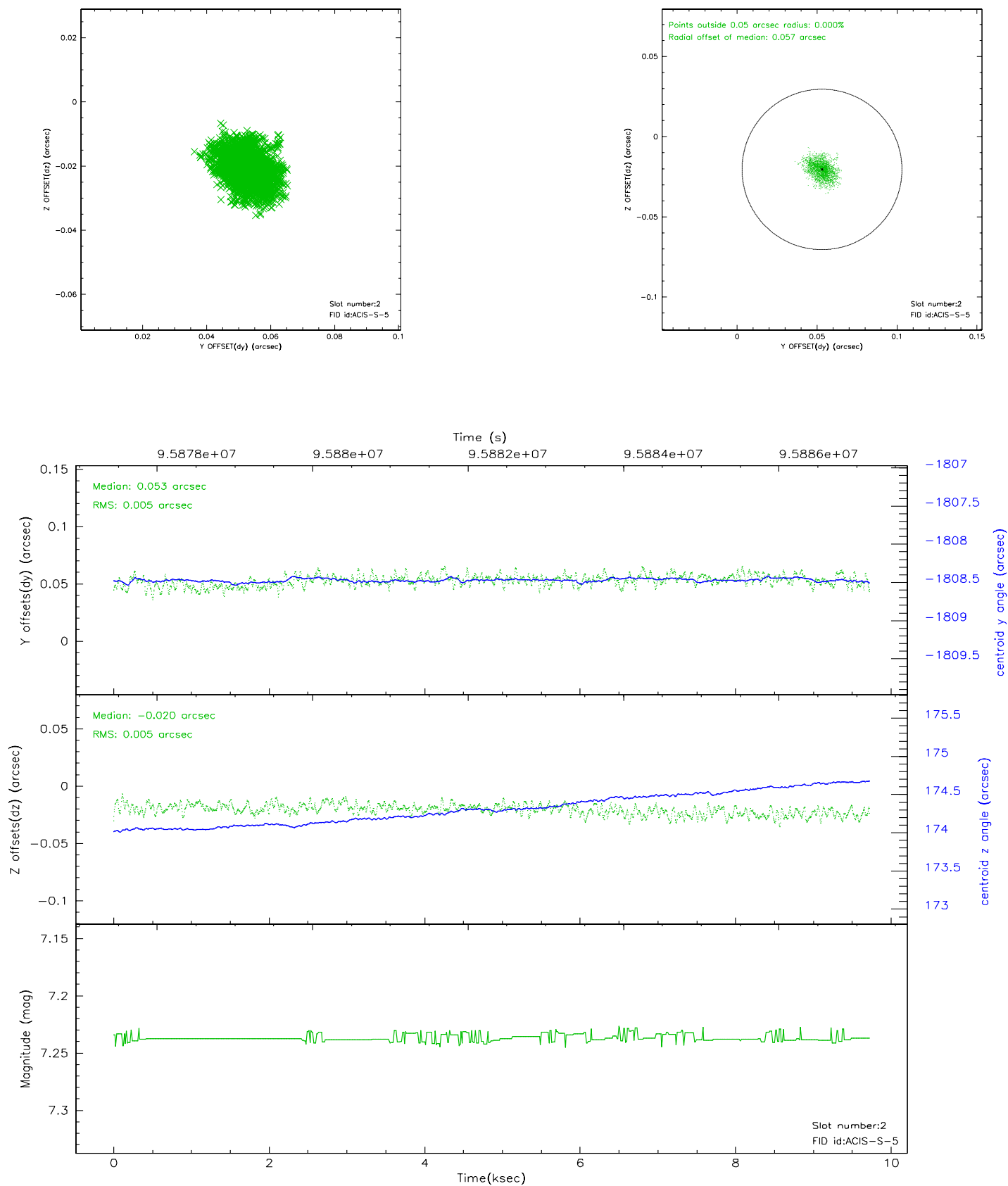
2.5.1 Slot 0



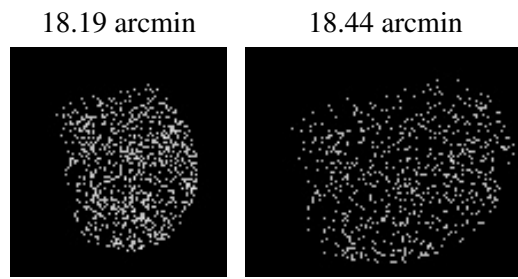
2.5.2 Slot 1



2.5.3 Slot 2



3 Point Sources



A Summary

A.1 Status

V&V Scientist	Jen Lauer
V&V Date (YYYY-MM-DD)	2006.11.06
V&V Edition	1
V&V Disposition and Status	OK
V&V Charge Time	9.725

A.2 Comments