

V&V Reference Report

L2 ASCDS Version : 7.6.9

Observation 1586 - L2 Version 001
Chandra X-Ray Center

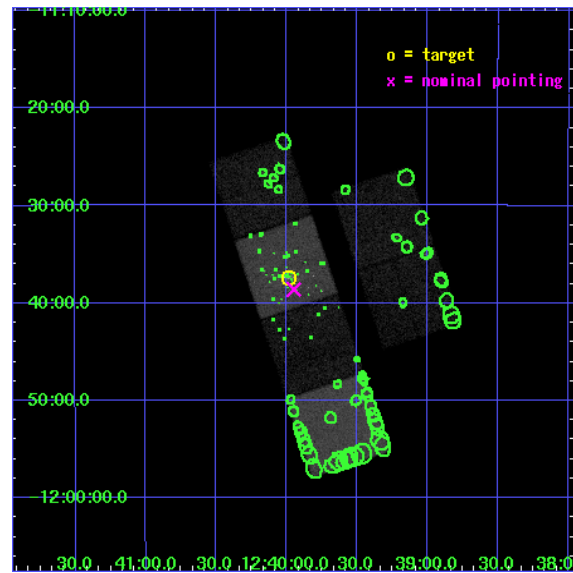
L2 Processing Date : Nov 25 2006

Contents

1	Front	2
2	OBI	3
2.1	OBI	3
2.1.1	Images	3
2.1.2	Bias	3
2.1.3	Parameters	4
2.1.4	Events	4
2.2	Compared Parameters	5
2.3	Aspect	6
2.4	Star Slots	9
2.4.1	Slot 3	9
2.4.2	Slot 4	10
2.4.3	Slot 5	11
2.4.4	Slot 6	12
2.4.5	Slot 7	13
2.5	FID Slots	14
2.5.1	Slot 0	14
2.5.2	Slot 1	15
2.5.3	Slot 2	16
3	Point Sources	17
A	Summary	18
A.1	Status	18
A.2	Comments	18

1 Front

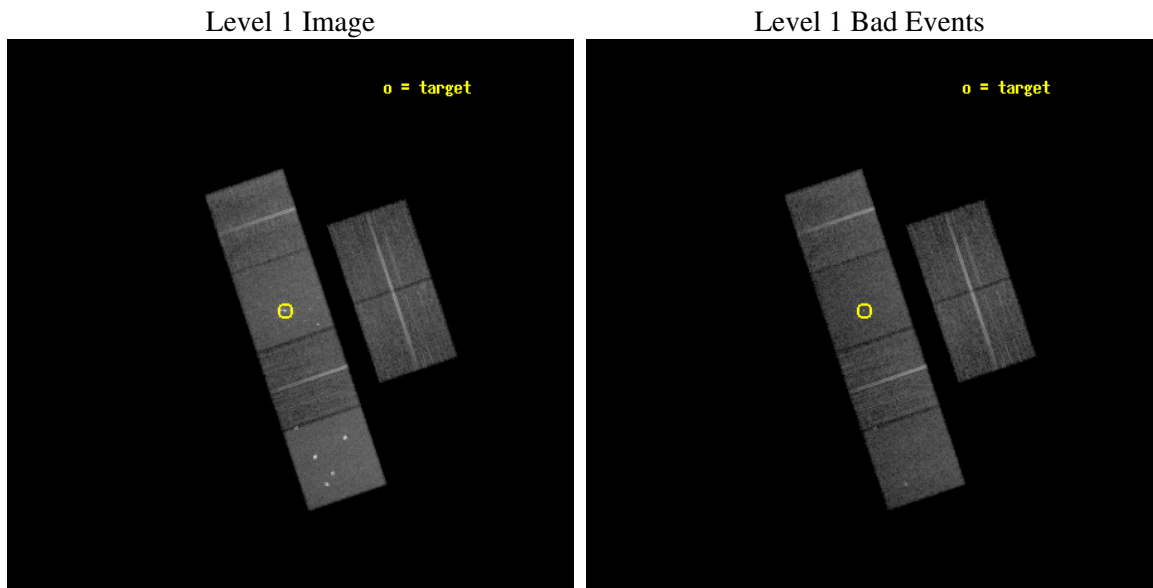
seq_num	600143
obs_id	1586
title	CHANDRA OBSERVATIONS OF THE ELLIPTICAL GALAXY NGC4594
observer	Dr. Stephen Murray
object	NGC4594
dtcycle	0
cycle	P
ra_targ	189.995833
dec_targ	-11.624444
ra_nom	189.98737261068
dec_nom	-11.643607046985
roll_nom	251.47992453361
revision	2
ontime	18752.000017464
livetime	18514.550902144
ontime2	18752.000017464
ontime3	18752.000017464
ontime5	18752.000017464
ontime6	18748.759057209
ontime7	18752.000017464
ontime8	18748.759176821
l2events	186031



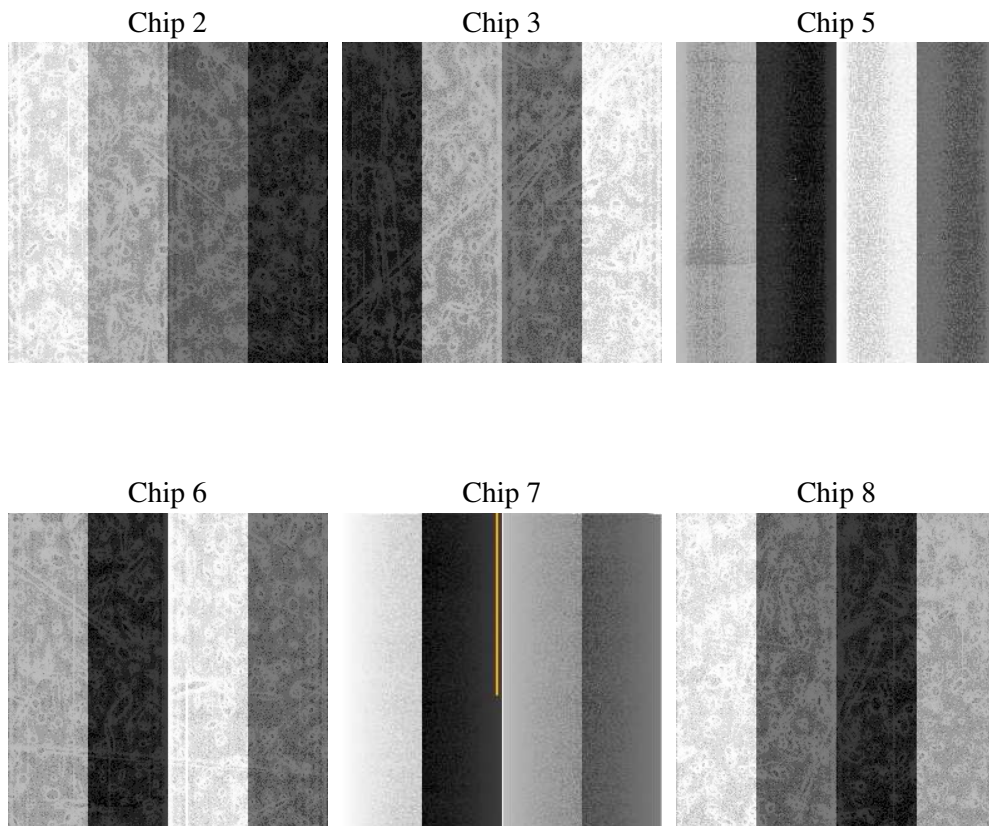
2 OBI

2.1 OBI

2.1.1 Images



2.1.2 Bias



2.1.3 Parameters

obi_num	0
ascdsver	7.6.9
caldsver	3.2.4
date	2006-11-25T04:00:12
revision	2

sched_exp_time	19000.000000
ontime	18758.911740407
ontime2	18758.911740407
ontime3	18758.911740407
ontime5	18758.911740407
ontime6	18755.670750231
ontime7	18758.911740407
ontime8	18755.670800009
l1events	847515

2.1.4 Events

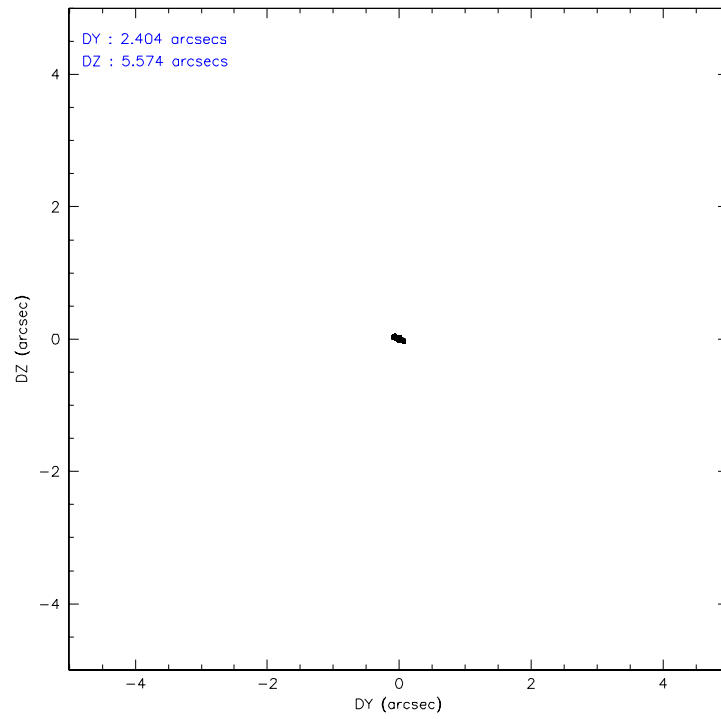
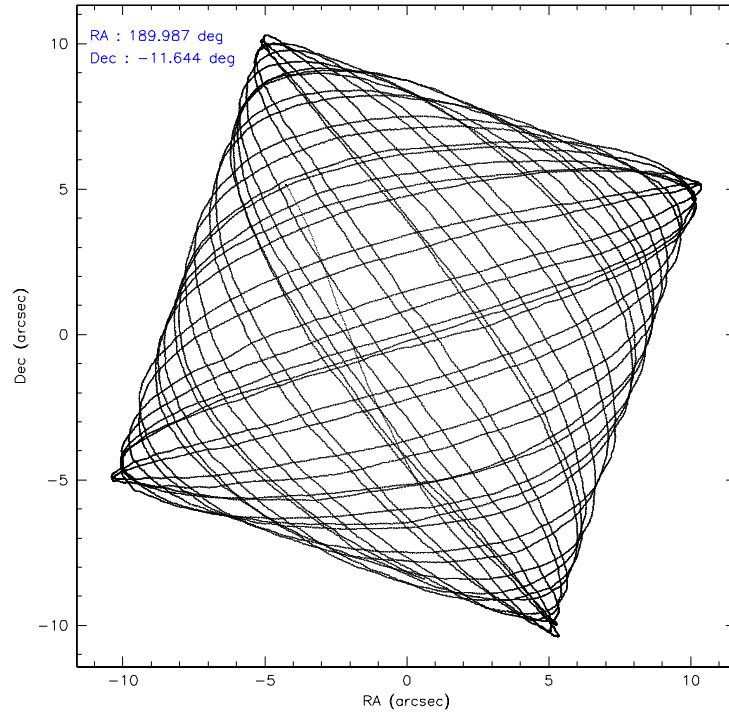
	ccd 2	ccd 3	ccd 5	ccd 6	ccd 7	ccd 8
level 1 events	121294	117132	175946	119373	164595	149175
rejected events	108046	103484	93469	105012	94838	119797
rejected %	89%	88%	53%	87%	57%	80%

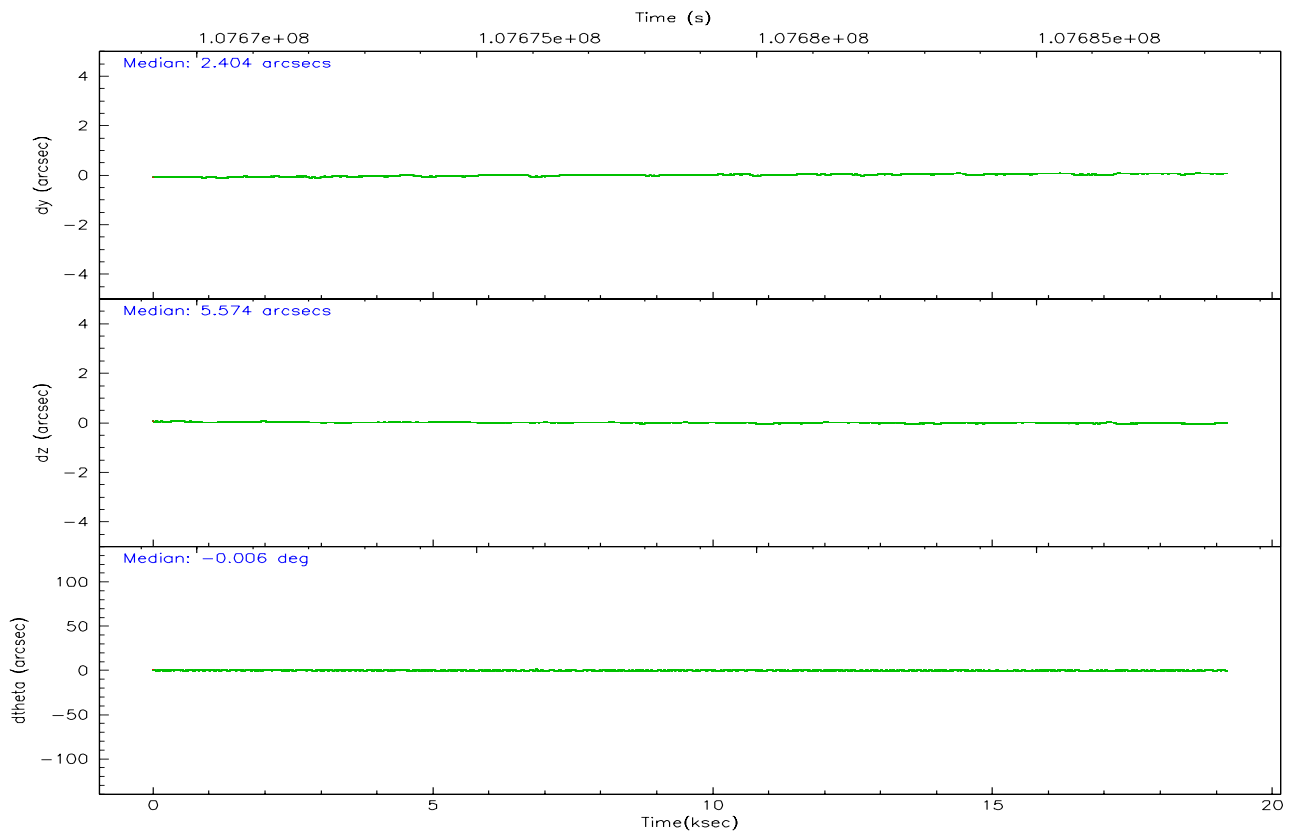
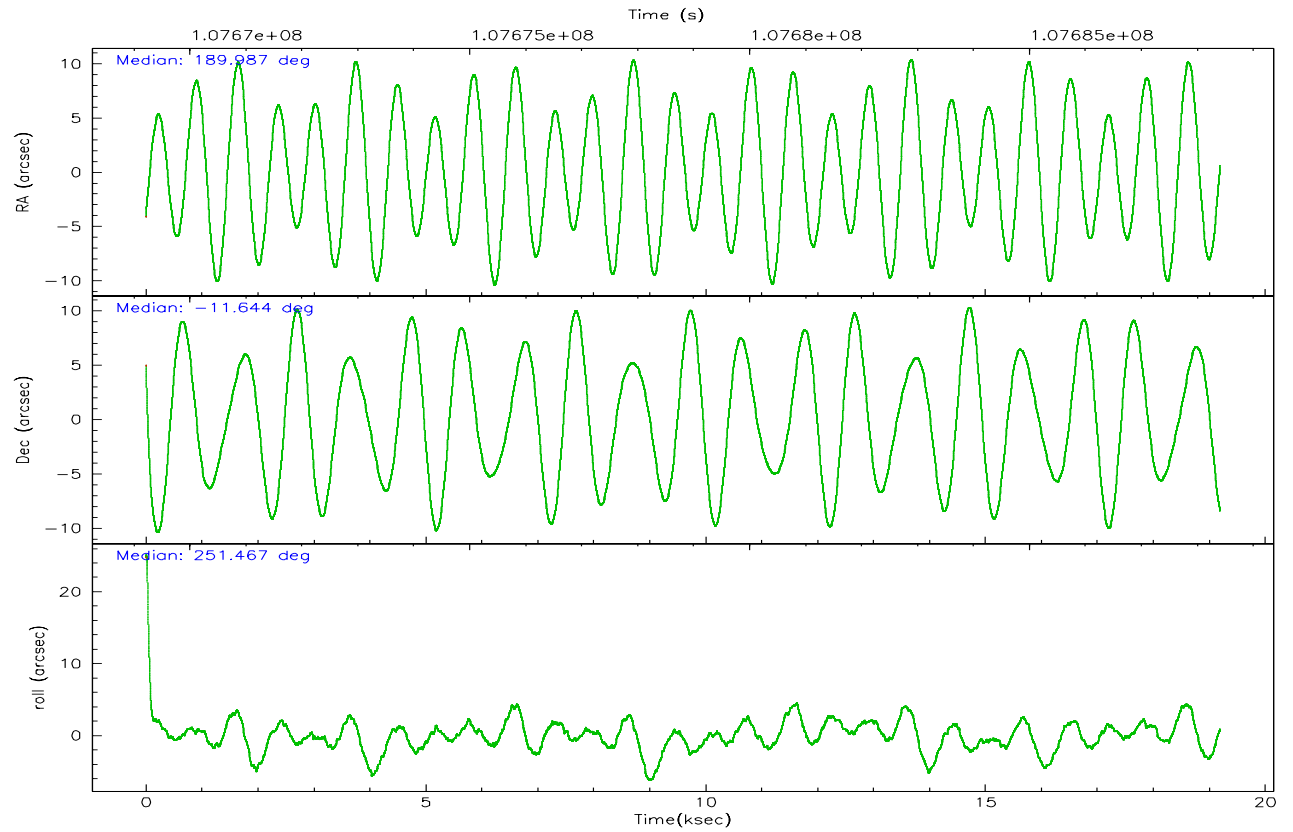
	ccd 2	ccd 3	ccd 5	ccd 6	ccd 7	ccd 8
grade 0 events	5627	5980	14440	6146	7171	9337
	4%	5%	8%	5%	4%	6%
grade 1 events	53	45	208	53	143	92
	0%	0%	0%	0%	0%	0%
grade 2 events	2894	2633	22889	2817	17534	6266
	2%	2%	13%	2%	10%	4%
grade 3 events	1191	1337	1816	1429	4349	3229
	0%	1%	1%	1%	2%	2%
grade 4 events	1208	1329	1581	1328	4106	3080
	0%	1%	0%	1%	2%	2%
grade 5 events	4125	4626	8071	4851	10426	6158
	3%	3%	4%	4%	6%	4%
grade 6 events	2335	2376	41782	2647	36630	7469
	1%	2%	23%	2%	22%	5%
grade 7 events	103861	98806	85159	100102	84236	113544
	85%	84%	48%	83%	51%	76%

2.2 Compared Parameters

Parameter	Planned	Actual	Parameter	Planned	Actual
Instrument	ACIS	ACIS	Obspar format version number	6	6
Detector	ACIS-235678	ACIS-235678	Obspar file type	PREDICTED	ACTUAL
Grating	NONE	NONE	Obspar update status	NONE	UPDATED
Data mode	FAINT	FAINT	Number of optional ACIS chips dropped	0	0
Observation mode	POINTING	POINTING	On-chip summing requested	N	N
Pointing RA	189.981553	189.9873726106789	Subarray requested	NONE	NONE
Pointing Dec	-11.616908	-11.64360704698547	Alternating exposures requested	N	N
Pointing Roll	251.322104	251.4799245336063	Primary exposure time	0.000000	3.2
SIM focus pos (mm)	-0.684267	-0.6828225247311905			
SIM defocus (mm)	0	0.001444936568705701			
SIM translation stage pos (mm)	-190.132523	-190.1400660498719			
SIM translation stage offset (mm)	0	0.00754346686406393			
Observation start time	107669411.184000	107668691.3278			
Observation start date	2001-05-31T04:09:07	2001-05-31T03:58:11			
Observation end time	107688411.184000	107688958.14109			
Observation end date	2001-05-31T09:25:47	2001-05-31T09:35:58			
Read mode	TIMED	TIMED			

2.3 Aspect



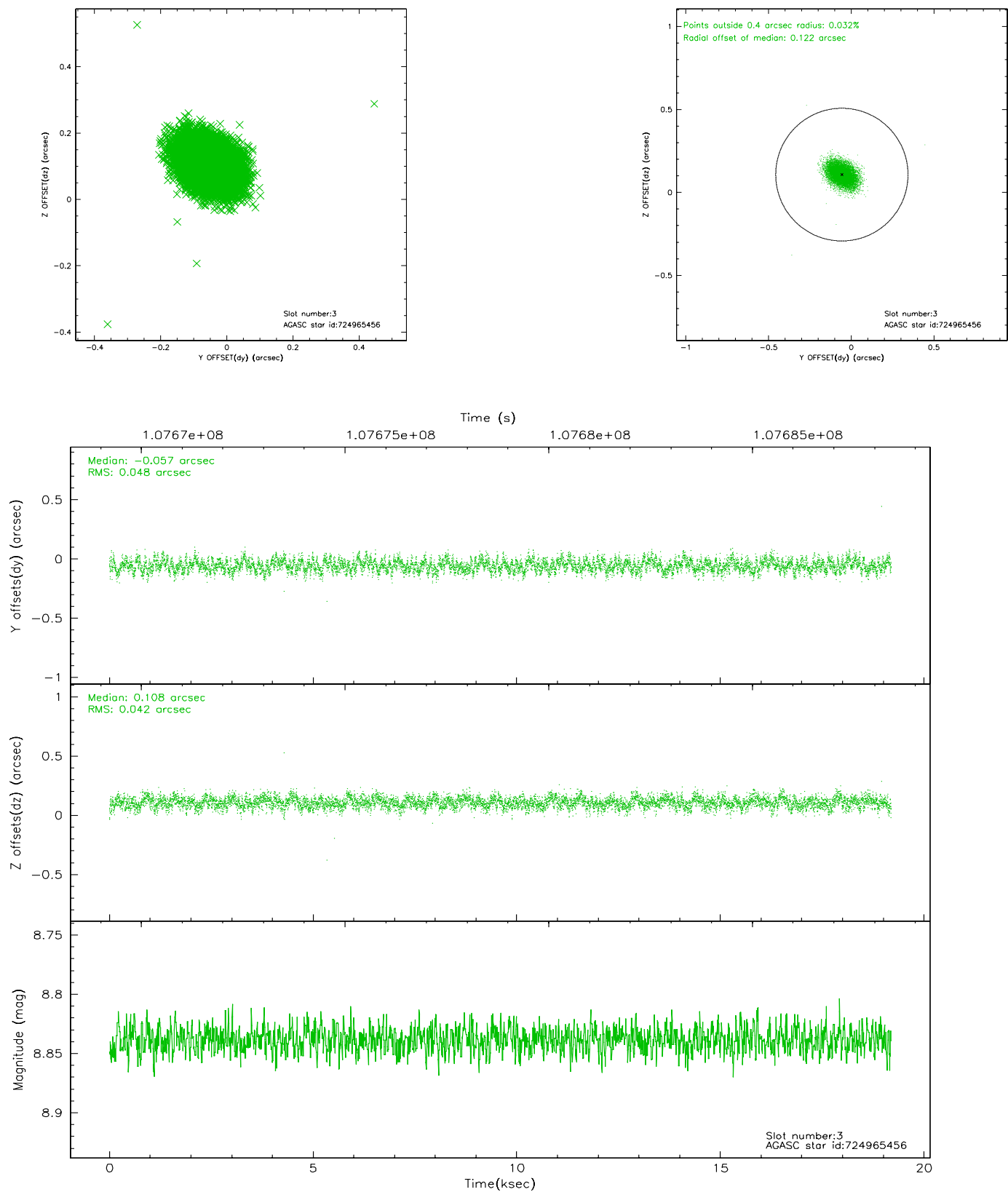


Slot Statistics

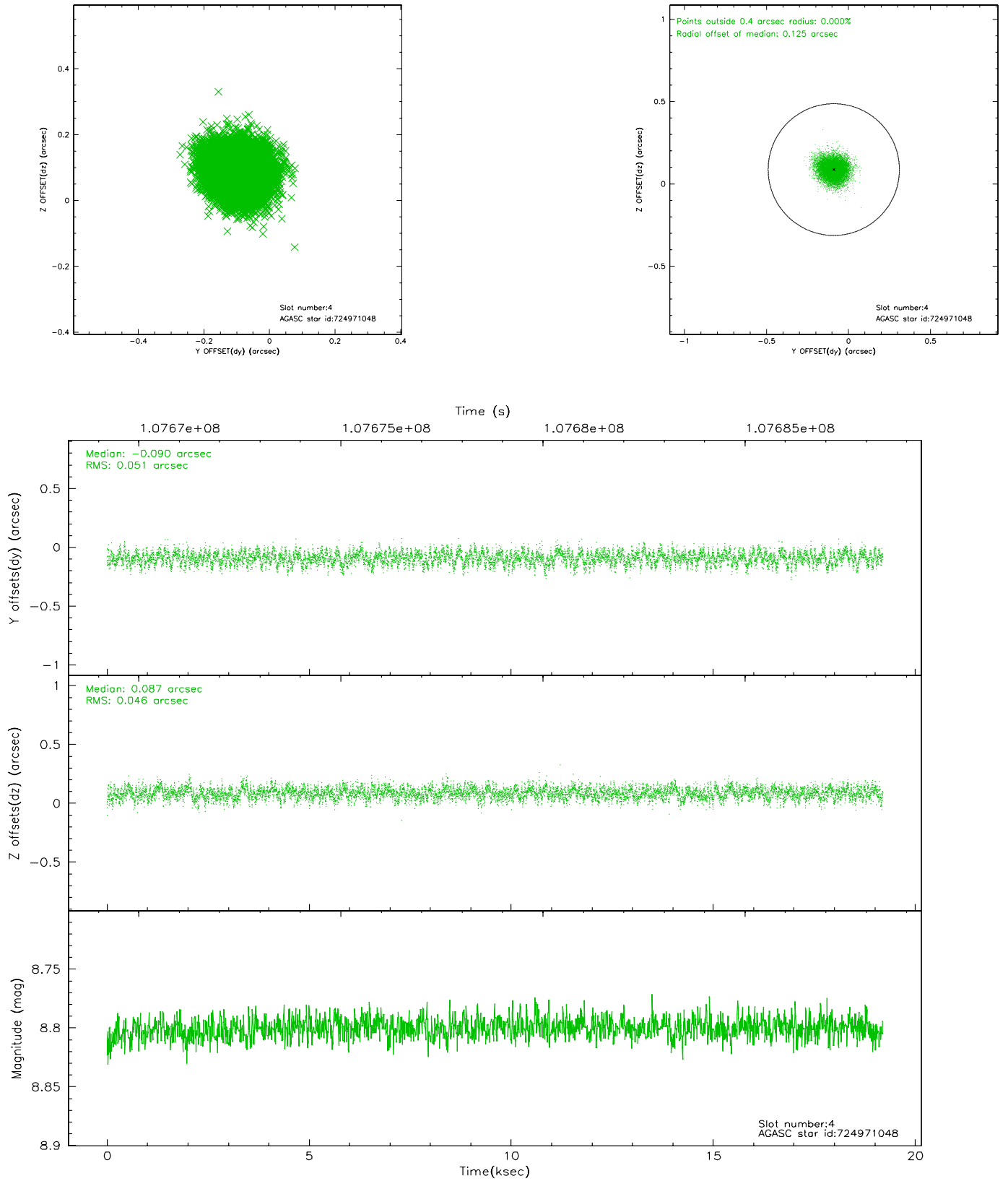
slot	status	id	mag	n_pts	med_dy	med_dz	dr1	dr2	ra	dec	mean_y	mean_z
0	FID	ACIS-S-2	7.11	4683	-0.028	0.022	0.007	0.010	0.000000	0.000000	-755.01	-1726.70
1	FID	ACIS-S-4	7.20	4683	-0.065	0.007	0.005	0.009	0.000000	0.000000	2158.09	181.63
2	FID	ACIS-S-5	7.24	4683	0.062	-0.020	0.006	0.010	0.000000	0.000000	-1807.55	175.40
3	GUIDE	724965456	8.84	9364	-0.057	0.108	0.067	0.110	190.440222	-11.591595	-603.90	1504.85
4	GUIDE	724971048	8.80	9360	-0.090	0.087	0.074	0.117	190.547082	-11.185183	-2110.95	1396.09
5	GUIDE	724969824	9.11	9350	0.043	-0.057	0.070	0.115	189.639630	-11.538037	117.64	-1231.86
6	GUIDE	724961848	9.32	9364	0.097	-0.034	0.084	0.137	190.046652	-11.830135	653.31	464.09
7	GUIDE	724959992	9.54	9358	0.005	-0.104	0.102	0.166	189.551265	-11.351404	-417.94	-1743.36

2.4 Star Slots

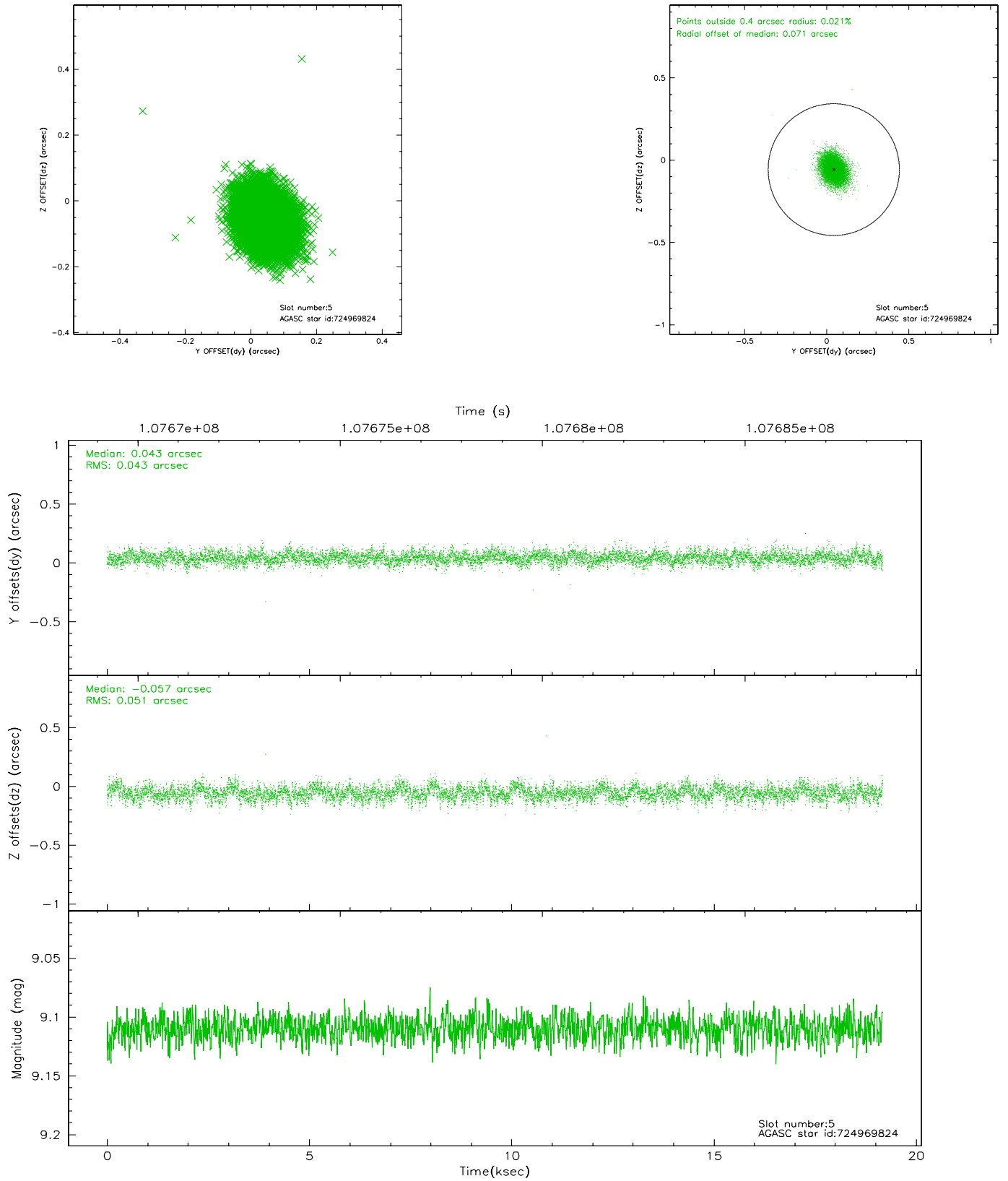
2.4.1 Slot 3



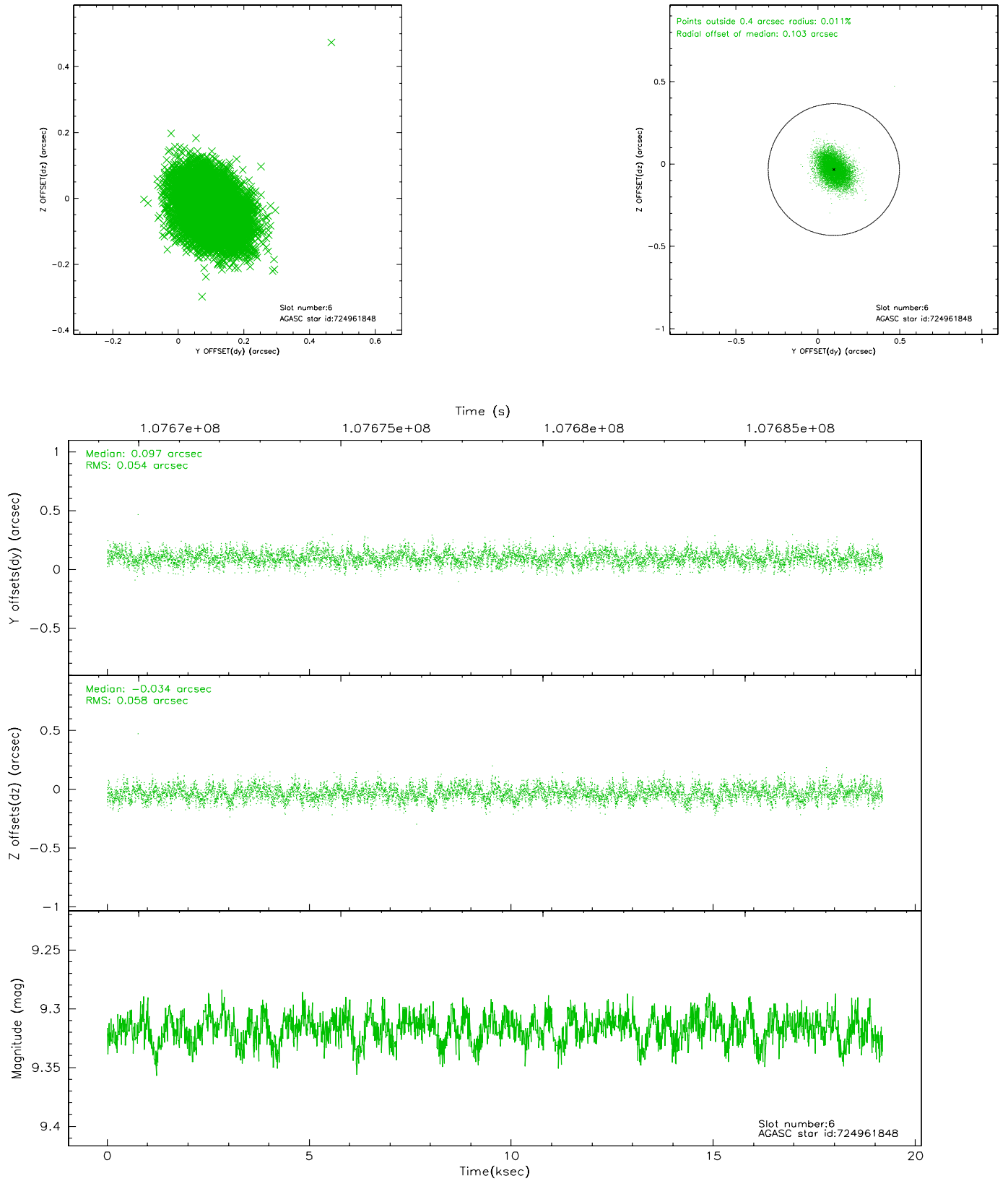
2.4.2 Slot 4



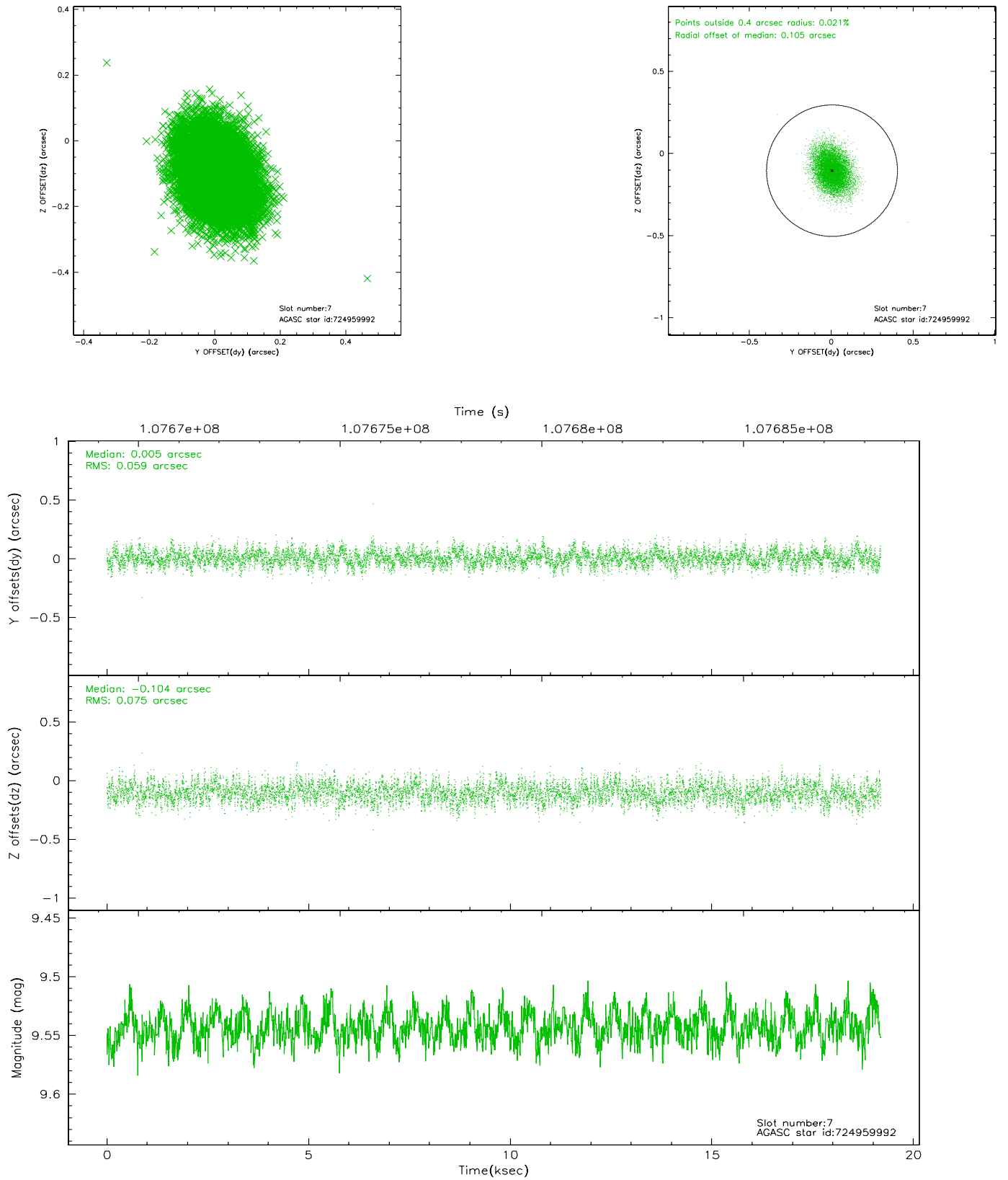
2.4.3 Slot 5



2.4.4 Slot 6

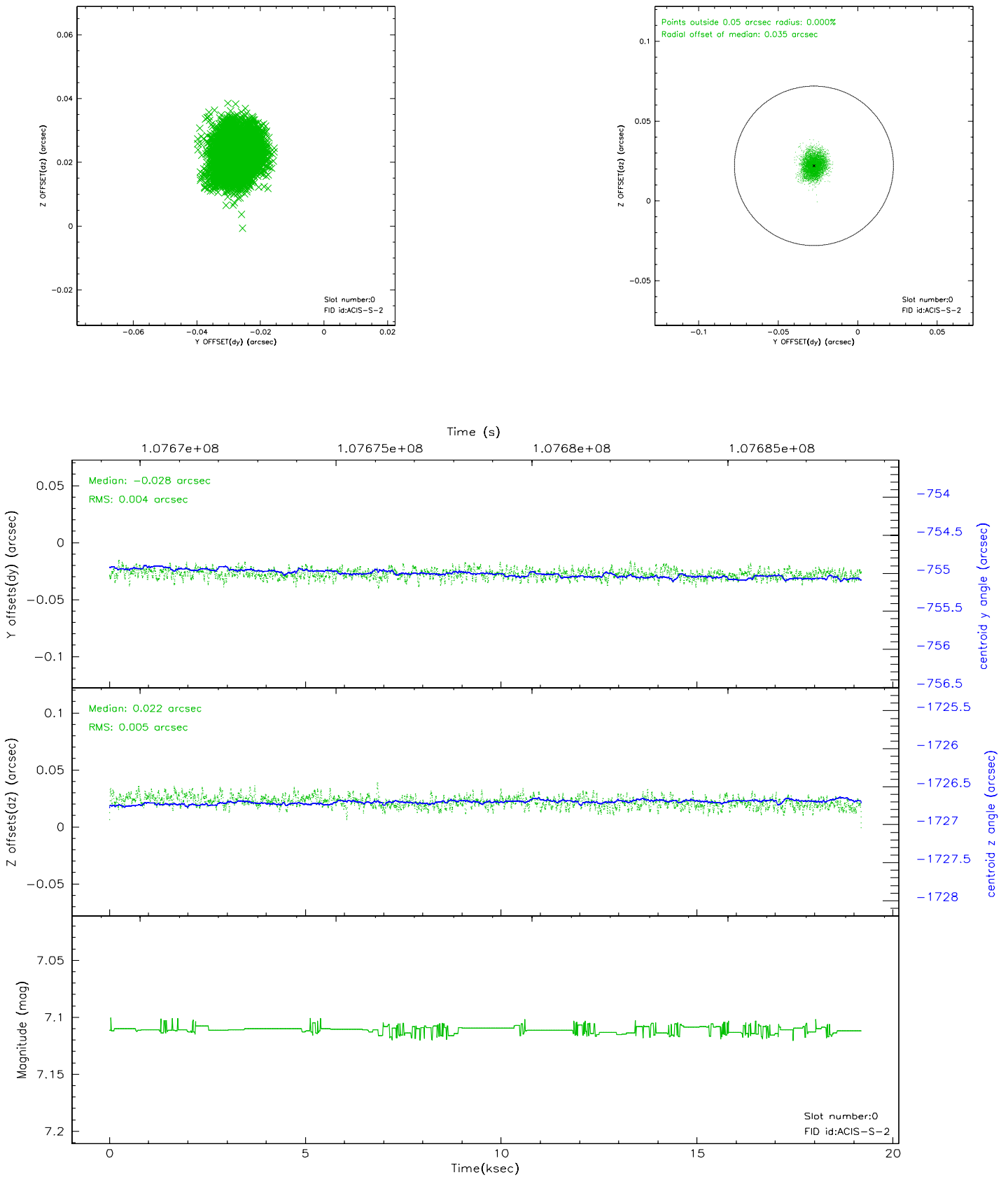


2.4.5 Slot 7

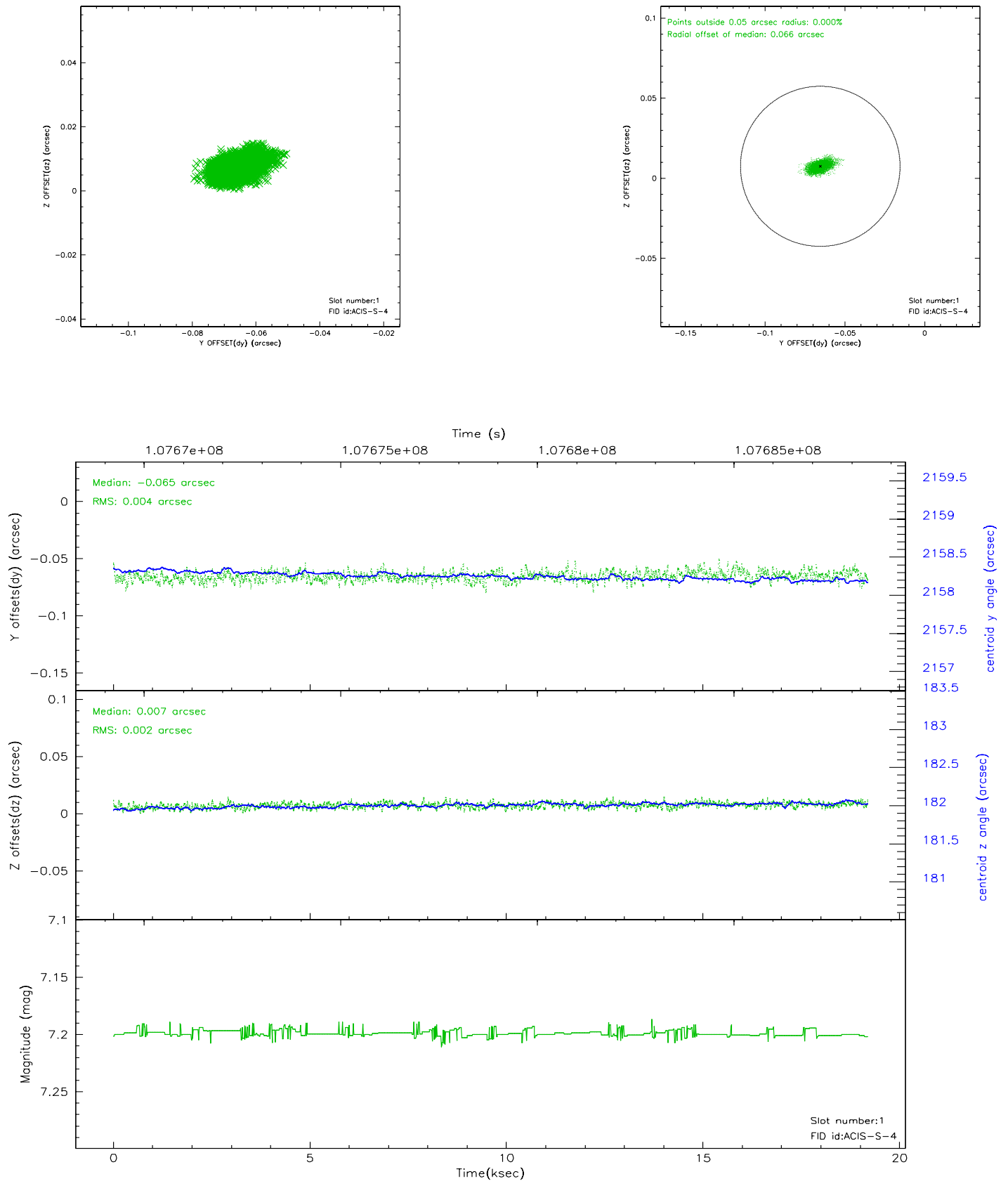


2.5 FID Slots

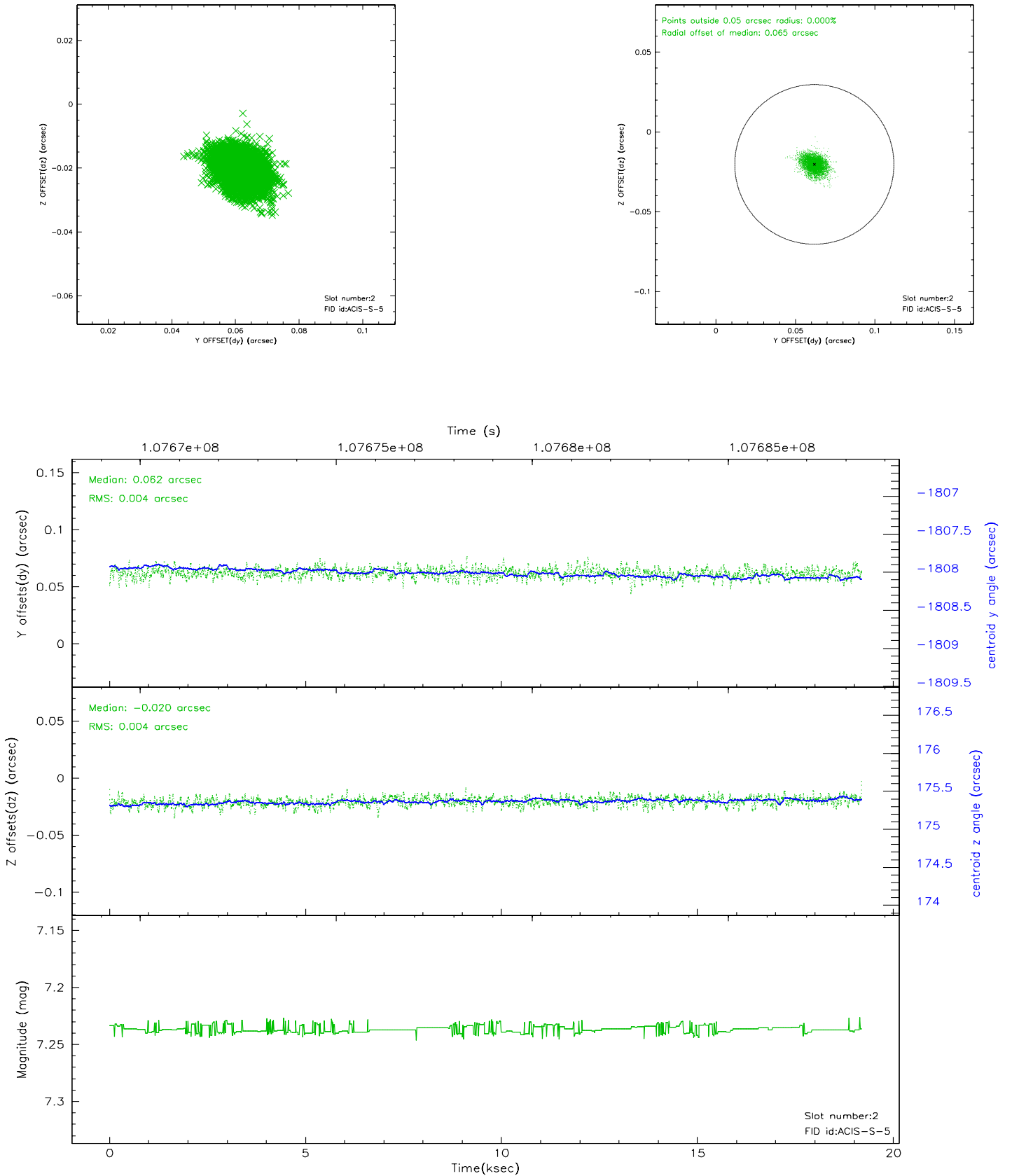
2.5.1 Slot 0



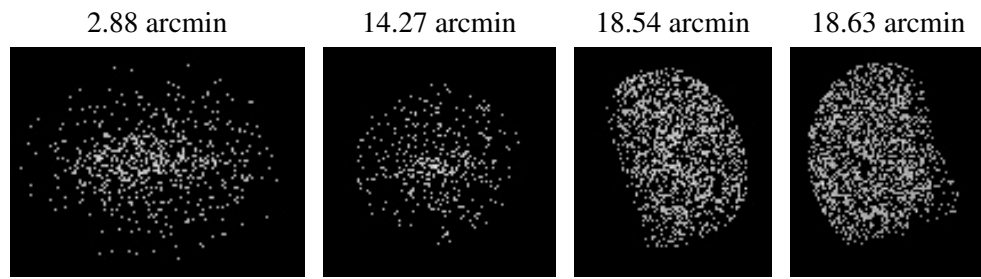
2.5.2 Slot 1



2.5.3 Slot 2



3 Point Sources



A Summary

A.1 Status

V&V Scientist	Jen Lauer
V&V Date (YYYY-MM-DD)	2006.11.27
V&V Edition	1
V&V Disposition and Status	OK
V&V Charge Time	18.755

A.2 Comments